

Data Path : P:\HPCHEM1\ECD O\Data\PO040318\  
 Data File : PO043535.D  
 Signal(s) : Signal #1: ECD1A.CH Signal #2: ECD2B.CH  
 Acq On : 03 Apr 2018 22:12  
 Operator : SM/UA  
 Sample : J2121-12  
 Misc :  
 ALS Vial : 11 Sample Multiplier: 1

Instrument :  
 ECD\_O  
 ClientSampleId :  
 PA-07-COMP

Integration File signal 1: autoint1.e  
 Integration File signal 2: autoint2.e  
 Quant Time: Apr 04 02:08:49 2018  
 Quant Method : P:\HPCHEM1\ECD\_O\methods\PO040218.M  
 Quant Title : GC EXTRACTABLES  
 QLast Update : Tue Apr 03 09:11:46 2018  
 Response via : Initial Calibration  
 Integrator: ChemStation 6890 Scale Mode: Small noise peaks clipped

Volume Inj. : 2 µl  
 Signal #1 Phase : ZB-MR1 Signal #2 Phase: ZB-MR2  
 Signal #1 Info : 30Mx0.32mmx 0.50µ Signal #2 Info : 30M x 0.32mm x 0.25µm

Compound	RT#1	RT#2	Resp#1	Resp#2	ng/ml	ng/ml
-----						
System Monitoring Compounds						
1) SA Tetrachlo...	4.064	3.320	8708599	12483420	15.673	16.178
2) SA Decachlor...	9.415	8.090	9663719	10815377	19.567	16.310

Target Compounds

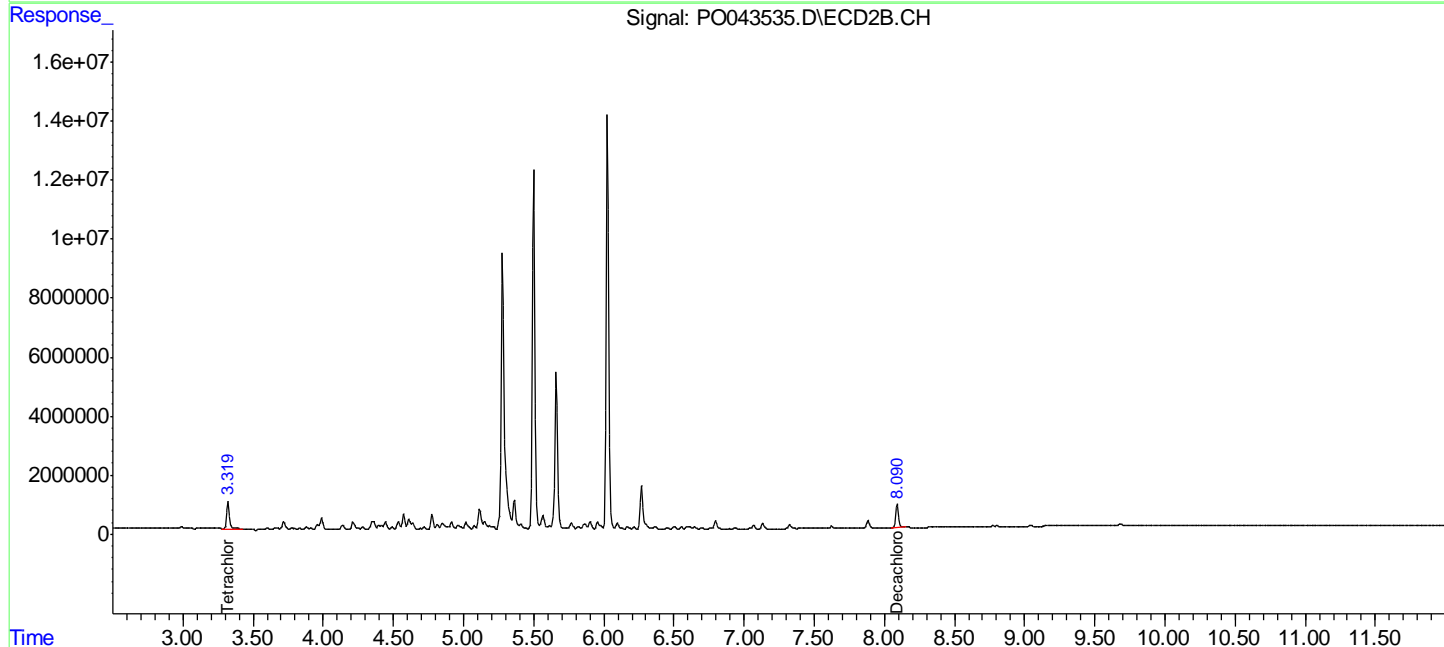
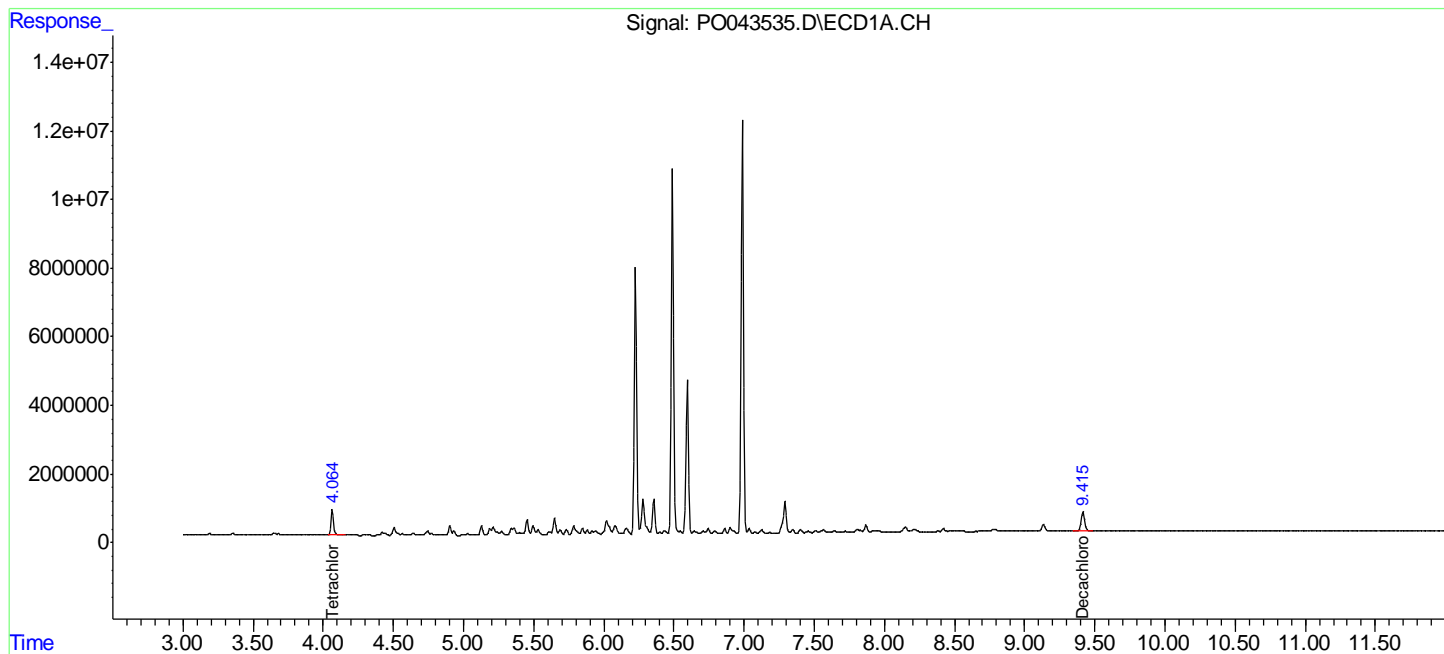
(f)=RT Delta > 1/2 Window (#)=Amounts differ by > 25% (m)=manual int.

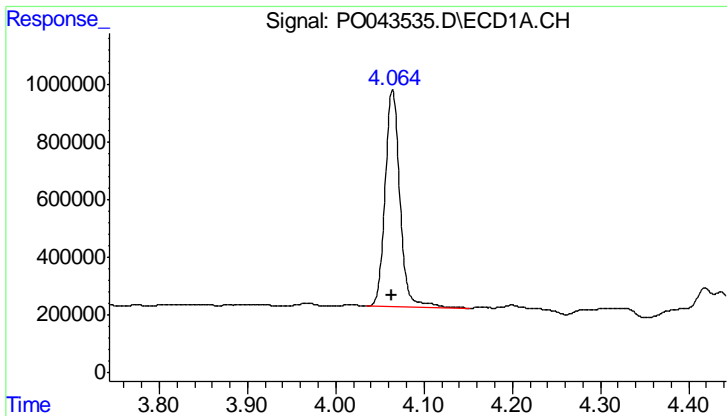
Data Path : P:\HPCHEM1\ECD O\Data\PO040318\  
 Data File : PO043535.D  
 Signal(s) : Signal #1: ECD1A.CH Signal #2: ECD2B.CH  
 Acq On : 03 Apr 2018 22:12  
 Operator : SM/UA  
 Sample : J2121-12  
 Misc :  
 ALS Vial : 11 Sample Multiplier: 1

Instrument :  
 ECD\_O  
 ClientSampled :  
 PA-07-COMP

Integration File signal 1: autoint1.e  
 Integration File signal 2: autoint2.e  
 Quant Time: Apr 04 02:08:49 2018  
 Quant Method : P:\HPCHEM1\ECD\_O\methods\PO040218.M  
 Quant Title : GC EXTRACTABLES  
 QLast Update : Tue Apr 03 09:11:46 2018  
 Response via : Initial Calibration  
 Integrator: ChemStation 6890 Scale Mode: Small noise peaks clipped

Volume Inj. : 2 ul  
 Signal #1 Phase : ZB-MR1 Signal #2 Phase: ZB-MR2  
 Signal #1 Info : 30Mx0.32mmx 0.50µ Signal #2 Info : 30M x 0.32mm x 0.25µm

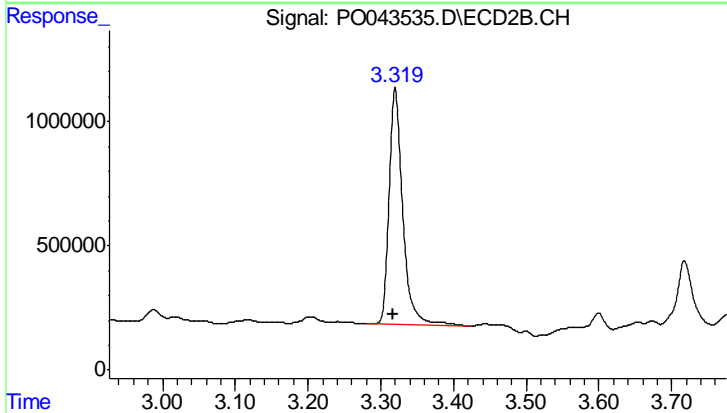




#1 Tetrachloro-m-xylene

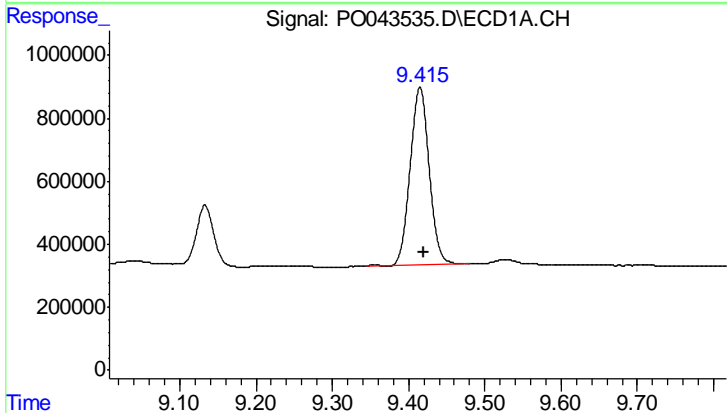
R.T.: 4.064 min  
 Delta R.T.: 0.000 min  
 Response: 8708599  
 Conc: 15.67 ng/ml

Instrument :  
 ECD\_O  
 ClientSampleId :  
 PA-07-COMP



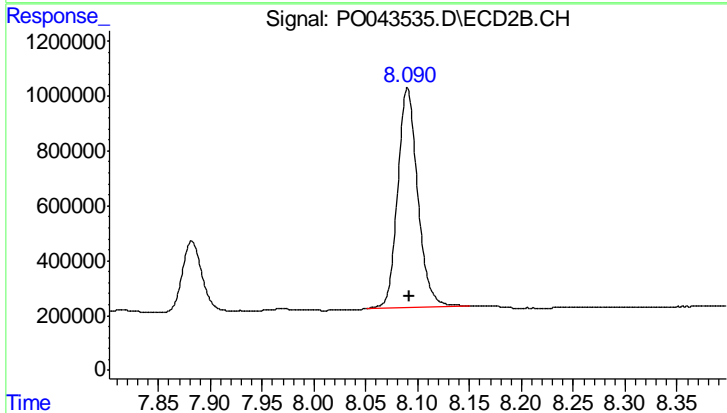
#1 Tetrachloro-m-xylene

R.T.: 3.320 min  
 Delta R.T.: 0.004 min  
 Response: 12483420  
 Conc: 16.18 ng/ml



#2 Decachlorobiphenyl

R.T.: 9.415 min  
 Delta R.T.: -0.005 min  
 Response: 9663719  
 Conc: 19.57 ng/ml



#2 Decachlorobiphenyl

R.T.: 8.090 min  
 Delta R.T.: -0.002 min  
 Response: 10815377  
 Conc: 16.31 ng/ml