

Data Path : Z:\pestpcbsrv\HPCHEM1\ECD_0\Data\P0040319\
 Data File : P0054890.D
 Signal(s) : Signal #1: ECD1A.CH Signal #2: ECD2B.CH
 Acq On : 03 Apr 2019 17:12
 Operator : SM/SJ
 Sample : K2186-17
 Misc :
 ALS Vial : 6 Sample Multiplier: 1

Instrument :
 ECD_0
 ClientSampleId :
 BELT-PARKWAY-STAGING-YARD-3

Integration File signal 1: autoint1.e
 Integration File signal 2: autoint2.e
 Quant Time: Apr 04 01:34:09 2019
 Quant Method : Z:\pestpcbsrv\HPCHEM1\ECD_0\methods\P0032519.M
 Quant Title : GC EXTRACTABLES
 QLast Update : Mon Mar 25 17:22:26 2019
 Response via : Initial Calibration
 Integrator: ChemStation 6890 Scale Mode: Small noise peaks clipped

Volume Inj. : 2 µl
 Signal #1 Phase : ZB-MR1 Signal #2 Phase: ZB-MR2
 Signal #1 Info : 30Mx0.32mmx 0.50µ Signal #2 Info : 30M x 0.32mm x 0.25µm

Compound	RT#1	RT#2	Resp#1	Resp#2	ng/ml	ng/ml
----------	------	------	--------	--------	-------	-------

 System Monitoring Compounds

1) SA Tetrachlo...	4.304	3.618	769070	749877	22.160	23.498
2) SA Decachlor...	9.926	8.594	656992	466320	13.327	14.642

Target Compounds

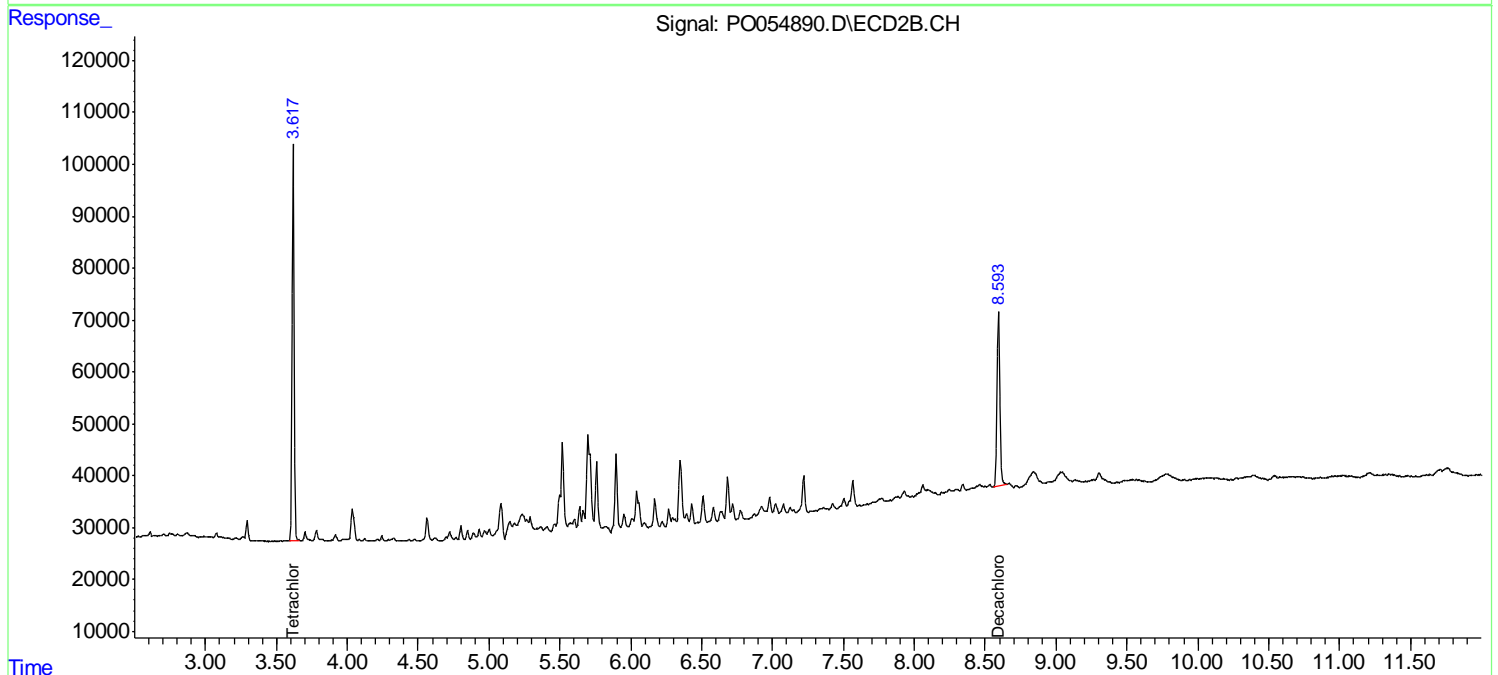
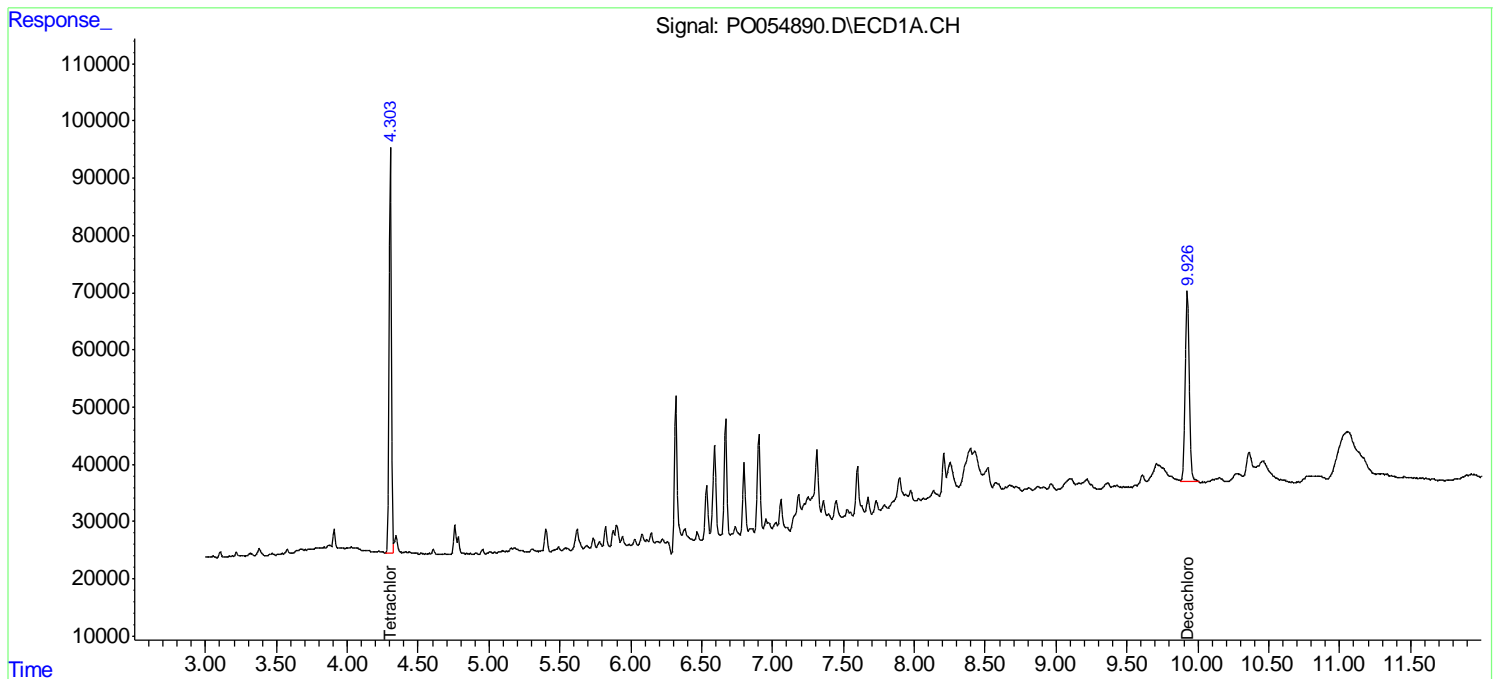
(f)=RT Delta > 1/2 Window (#)=Amounts differ by > 25% (m)=manual int.

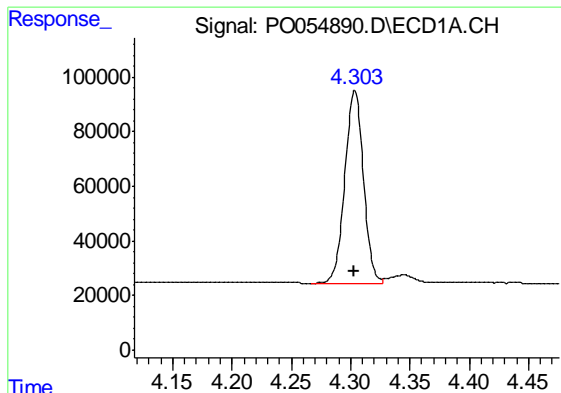
Data Path : Z:\pestpcbsrv\HPCHEM1\ECD_O\Data\P0040319\
 Data File : P0054890.D
 Signal(s) : Signal #1: ECD1A.CH Signal #2: ECD2B.CH
 Acq On : 03 Apr 2019 17:12
 Operator : SM/SJ
 Sample : K2186-17
 Misc :
 ALS Vial : 6 Sample Multiplier: 1

Instrument :
 ECD_O
ClientSampleId :
 BELT-PARKWAY-STAGING-YARD-3

Integration File signal 1: autoint1.e
 Integration File signal 2: autoint2.e
 Quant Time: Apr 04 01:34:09 2019
 Quant Method : Z:\pestpcbsrv\HPCHEM1\ECD_O\methods\P0032519.M
 Quant Title : GC EXTRACTABLES
 QLast Update : Mon Mar 25 17:22:26 2019
 Response via : Initial Calibration
 Integrator: ChemStation 6890 Scale Mode: Small noise peaks clipped

Volume Inj. : 2 µl
 Signal #1 Phase : ZB-MR1 Signal #2 Phase: ZB-MR2
 Signal #1 Info : 30Mx0.32mmx 0.50µ Signal #2 Info : 30M x 0.32mm x 0.25µm

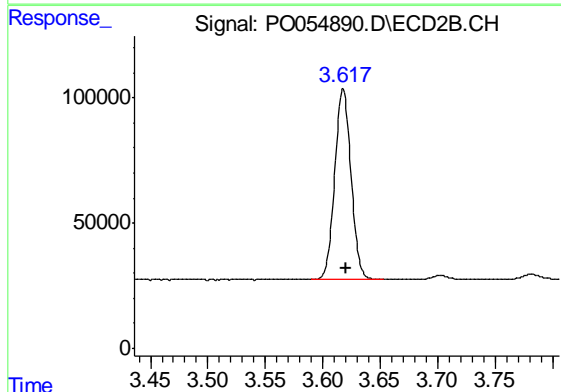




#1 Tetrachloro-m-xylene

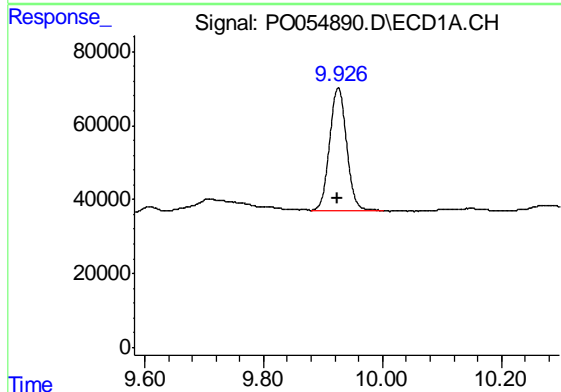
R.T.: 4.304 min
 Delta R.T.: 0.000 min
 Response: 769070
 Conc: 22.16 ng/ml

Instrument :
 ECD_O
 ClientSampleId :
 BELT-PARKWAY-STAGING-YARD-3



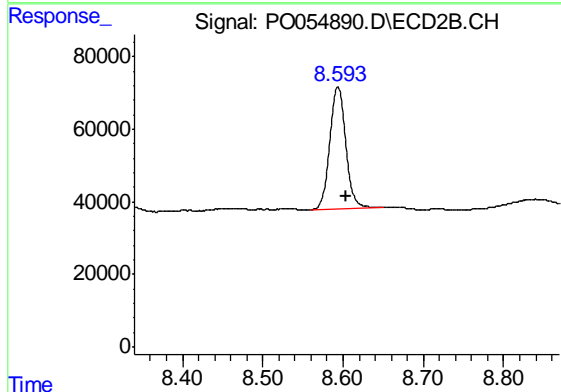
#1 Tetrachloro-m-xylene

R.T.: 3.618 min
 Delta R.T.: -0.003 min
 Response: 749877
 Conc: 23.50 ng/ml



#2 Decachlorobiphenyl

R.T.: 9.926 min
 Delta R.T.: 0.003 min
 Response: 656992
 Conc: 13.33 ng/ml



#2 Decachlorobiphenyl

R.T.: 8.594 min
 Delta R.T.: -0.010 min
 Response: 466320
 Conc: 14.64 ng/ml