

Data Path : Z:\pestpcbsrv\HPCHEM1\ECD_0\Data\P0040420\
 Data File : P0067667.D
 Signal(s) : Signal #1: ECD1A.CH Signal #2: ECD2B.CH
 Acq On : 03 Apr 2020 19:26
 Operator : DD\AJ
 Sample : L2101-04
 Misc :
 ALS Vial : 16 Sample Multiplier: 1

Instrument :
 ECD_0
 ClientSampled :
 239-WC-L-01

Integration File signal 1: autoint1.e
 Integration File signal 2: autoint2.e
 Quant Time: Apr 04 02:28:26 2020
 Quant Method : Z:\pestpcbsrv\HPCHEM1\ECD_0\methods\P0040120.M
 Quant Title : GC EXTRACTABLES
 QLast Update : Fri Apr 03 16:04:09 2020
 Response via : Initial Calibration
 Integrator: ChemStation 6890 Scale Mode: Small noise peaks clipped

Volume Inj. : 2 µl
 Signal #1 Phase : ZB-MR1 Signal #2 Phase: ZB-MR2
 Signal #1 Info : 30Mx0.32mmx 0.50µ Signal #2 Info : 30M x 0.32mm x 0.25µm

Compound	RT#1	RT#2	Resp#1	Resp#2	ng/ml	ng/ml
System Monitoring Compounds						
1) SA Tetrachlo...	4.934	3.944	595082	892973	24.989	26.642
2) SA Decachlor...	10.916	9.230	518599	607716	15.233	14.698
Target Compounds						
39) L8 AR-1262-4	9.518	0.000	100468	0	63.493	N.D. #
42) L9 AR-1268-2	9.518	0.000	100468	0	28.987	N.D. #

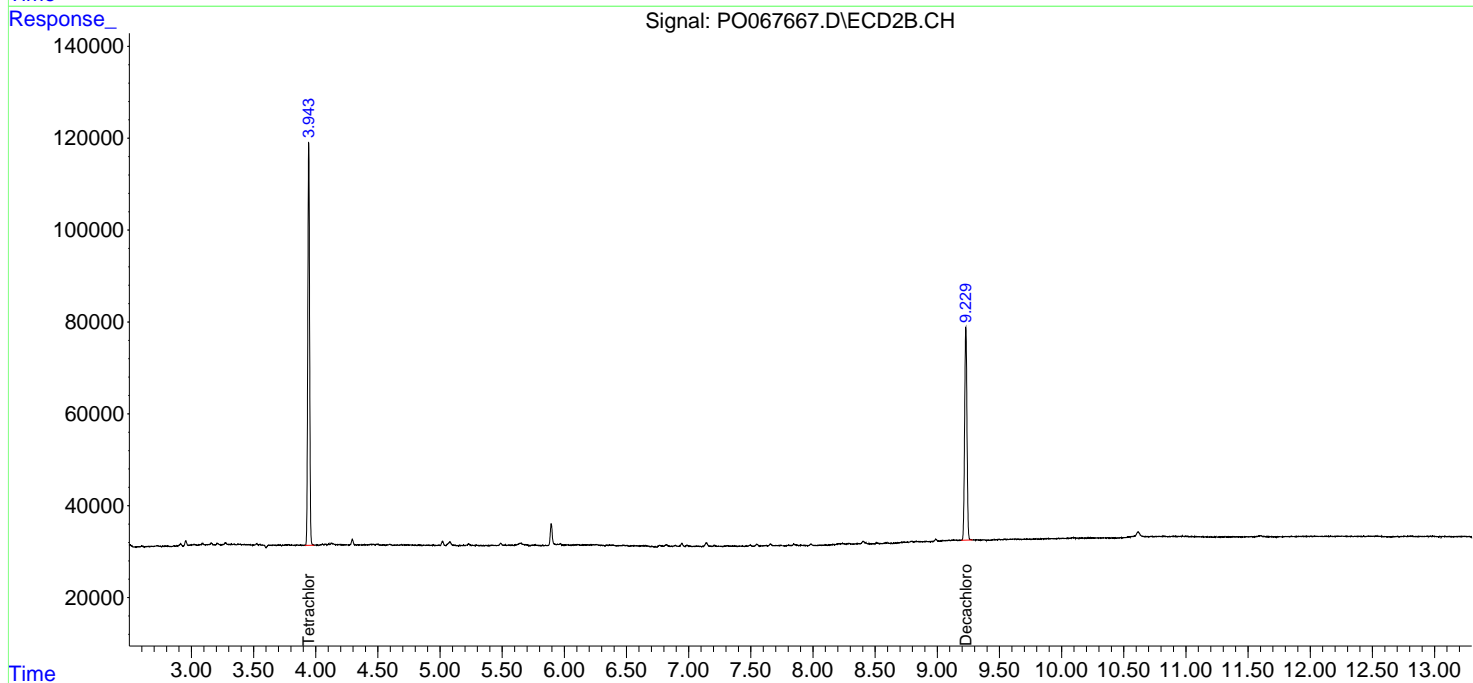
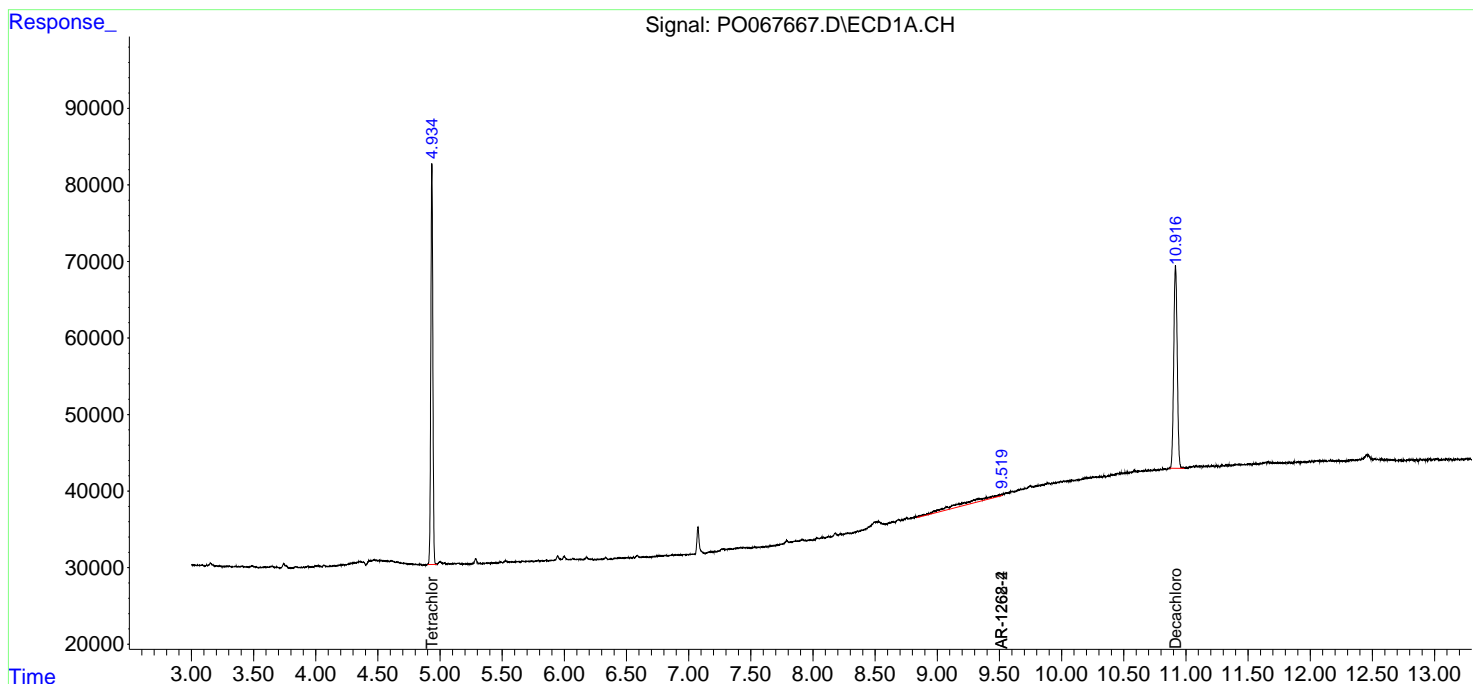
(f)=RT Delta > 1/2 Window (#)=Amounts differ by > 25% (m)=manual int.

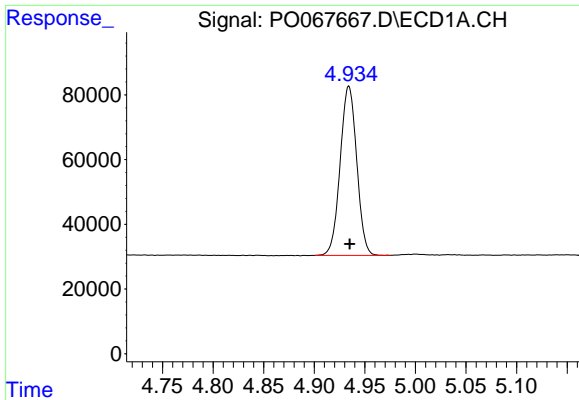
Data Path : Z:\pestpcbsrv\HPCHEM1\ECD_0\Data\P0040420\
 Data File : P0067667.D
 Signal(s) : Signal #1: ECD1A.CH Signal #2: ECD2B.CH
 Acq On : 03 Apr 2020 19:26
 Operator : DD\AJ
 Sample : L2101-04
 Misc :
 ALS Vial : 16 Sample Multiplier: 1

Instrument :
 ECD_O
 ClientSampleId :
 239-WC-L-01

Integration File signal 1: autoint1.e
 Integration File signal 2: autoint2.e
 Quant Time: Apr 04 02:28:26 2020
 Quant Method : Z:\pestpcbsrv\HPCHEM1\ECD_0\methods\P0040120.M
 Quant Title : GC EXTRACTABLES
 QLast Update : Fri Apr 03 16:04:09 2020
 Response via : Initial Calibration
 Integrator: ChemStation 6890 Scale Mode: Small noise peaks clipped

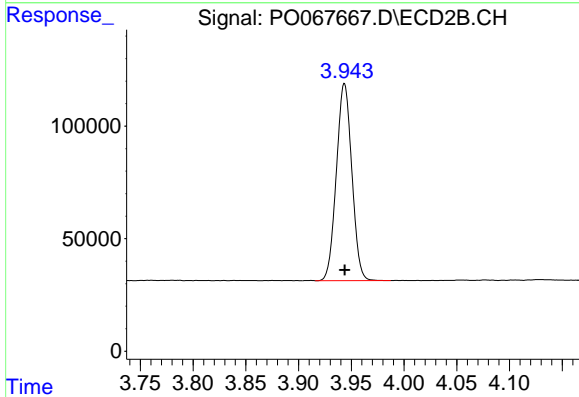
Volume Inj. : 2 µl
 Signal #1 Phase : ZB-MR1 Signal #2 Phase: ZB-MR2
 Signal #1 Info : 30Mx0.32mmx 0.50µ Signal #2 Info : 30M x 0.32mm x 0.25µm



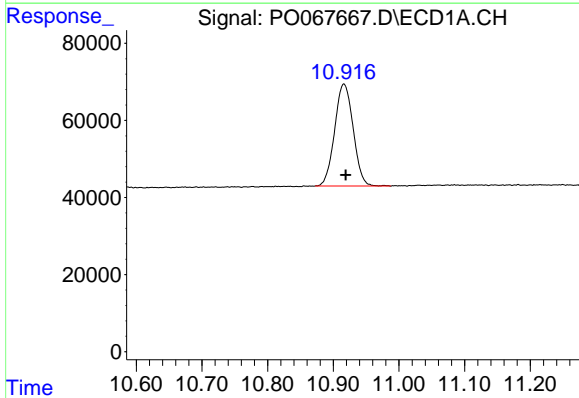


#1 Tetrachloro-m-xylene
 R.T.: 4.934 min
 Delta R.T.: 0.000 min
 Response: 595082
 Conc: 24.99 ng/ml

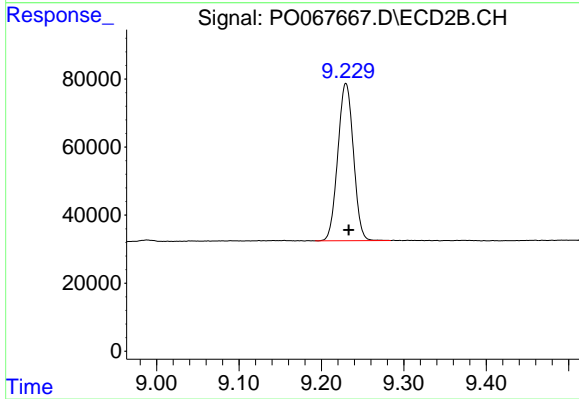
Instrument :
 ECD_O
 ClientSampled :
 239-WC-L-01



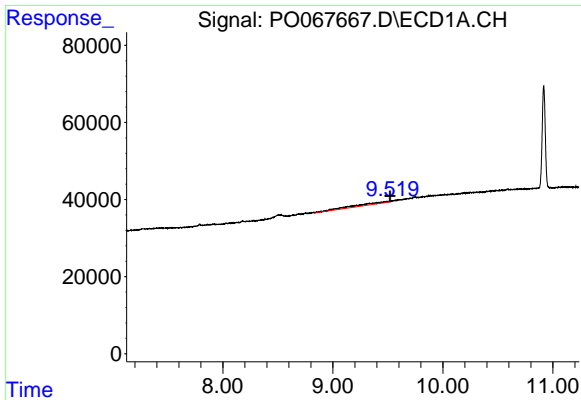
#1 Tetrachloro-m-xylene
 R.T.: 3.944 min
 Delta R.T.: 0.000 min
 Response: 892973
 Conc: 26.64 ng/ml



#2 Decachlorobiphenyl
 R.T.: 10.916 min
 Delta R.T.: -0.003 min
 Response: 518599
 Conc: 15.23 ng/ml



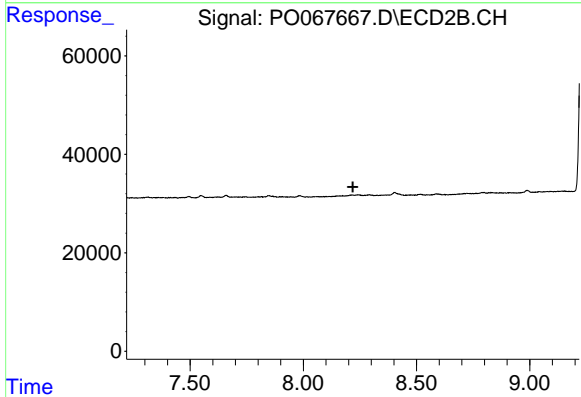
#2 Decachlorobiphenyl
 R.T.: 9.230 min
 Delta R.T.: -0.003 min
 Response: 607716
 Conc: 14.70 ng/ml



#39 AR-1262-4

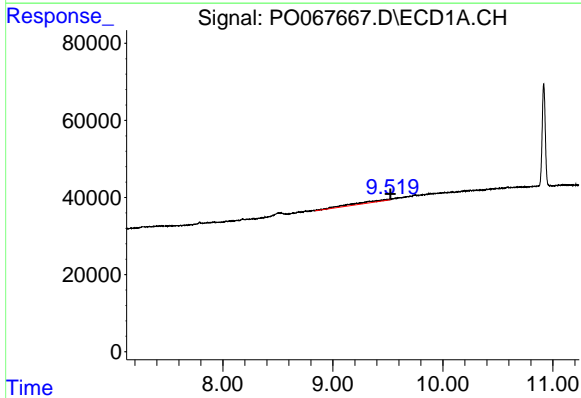
R.T.: 9.518 min
 Delta R.T.: -0.003 min
 Response: 100468
 Conc: 63.49 ng/ml

Instrument :
 ECD_O
 ClientSampleId :
 239-WC-L-01



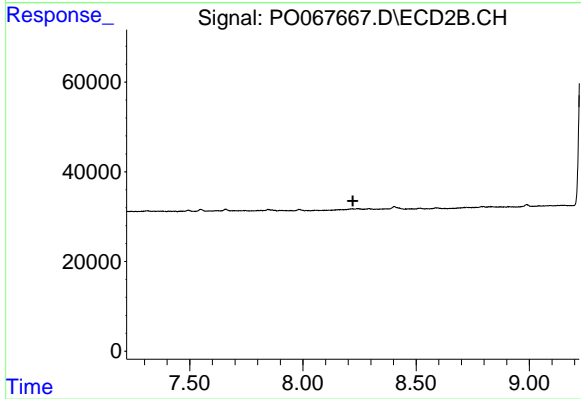
#39 AR-1262-4

R.T.: 0.000 min
 Exp R.T. : 8.219 min
 Response: 0
 Conc: N.D.



#42 AR-1268-2

R.T.: 9.518 min
 Delta R.T.: -0.005 min
 Response: 100468
 Conc: 28.99 ng/ml



#42 AR-1268-2

R.T.: 0.000 min
 Exp R.T. : 8.221 min
 Response: 0
 Conc: N.D.