

Data Path : Z:\pestpcbsrv\HPCHEM1\ECD\_0\Data\P0040720\  
 Data File : P0067710.D  
 Signal(s) : Signal #1: ECD1A.CH Signal #2: ECD2B.CH  
 Acq On : 07 Apr 2020 11:54  
 Operator : DD\AJ  
 Sample : L2166-19MS  
 Misc :  
 ALS Vial : 11 Sample Multiplier: 1

Instrument :  
 ECD\_0  
 ClientSampleId :  
 TP-45-COMPMS

Integration File signal 1: autoint1.e  
 Integration File signal 2: autoint2.e  
 Quant Time: Apr 07 14:48:31 2020  
 Quant Method : Z:\pestpcbsrv\HPCHEM1\ECD\_0\methods\P0040120.M  
 Quant Title : GC EXTRACTABLES  
 QLast Update : Fri Apr 03 16:04:09 2020  
 Response via : Initial Calibration  
 Integrator: ChemStation 6890 Scale Mode: Small noise peaks clipped

Volume Inj. : 2 µl  
 Signal #1 Phase : ZB-MR1 Signal #2 Phase: ZB-MR2  
 Signal #1 Info : 30Mx0.32mmx 0.50µ Signal #2 Info : 30M x 0.32mm x 0.25µm

Compound	RT#1	RT#2	Resp#1	Resp#2	ng/ml	ng/ml
-----						
System Monitoring Compounds						
1) SA Tetrachlo...	4.932	3.942	629277	927075	26.425	27.660
2) SA Decachlor...	10.911	9.228	745420	823089	21.896	19.907
Target Compounds						
3) L1 AR-1016-1	6.251	5.197	258624	383923	250.791	261.899
4) L1 AR-1016-2	6.275	5.217	356297	510597	252.525	260.645
5) L1 AR-1016-3	6.341	5.407	215680	279348	245.374	267.097
6) L1 AR-1016-4	6.448	5.460	172619	225263	244.789	252.515
7) L1 AR-1016-5	6.762	5.688	170919	275949	237.704	243.854
31) L7 AR-1260-1	7.935	6.783	340265	528111	251.781	251.909
32) L7 AR-1260-2	8.199	6.981	423683	640727	250.971	249.529
33) L7 AR-1260-3	8.562	7.135	261300	574587	200.463	238.946
34) L7 AR-1260-4	8.793	7.618	315628	431077	205.380	205.109
35) L7 AR-1260-5	9.115	7.864	619204	975330	196.285	192.657

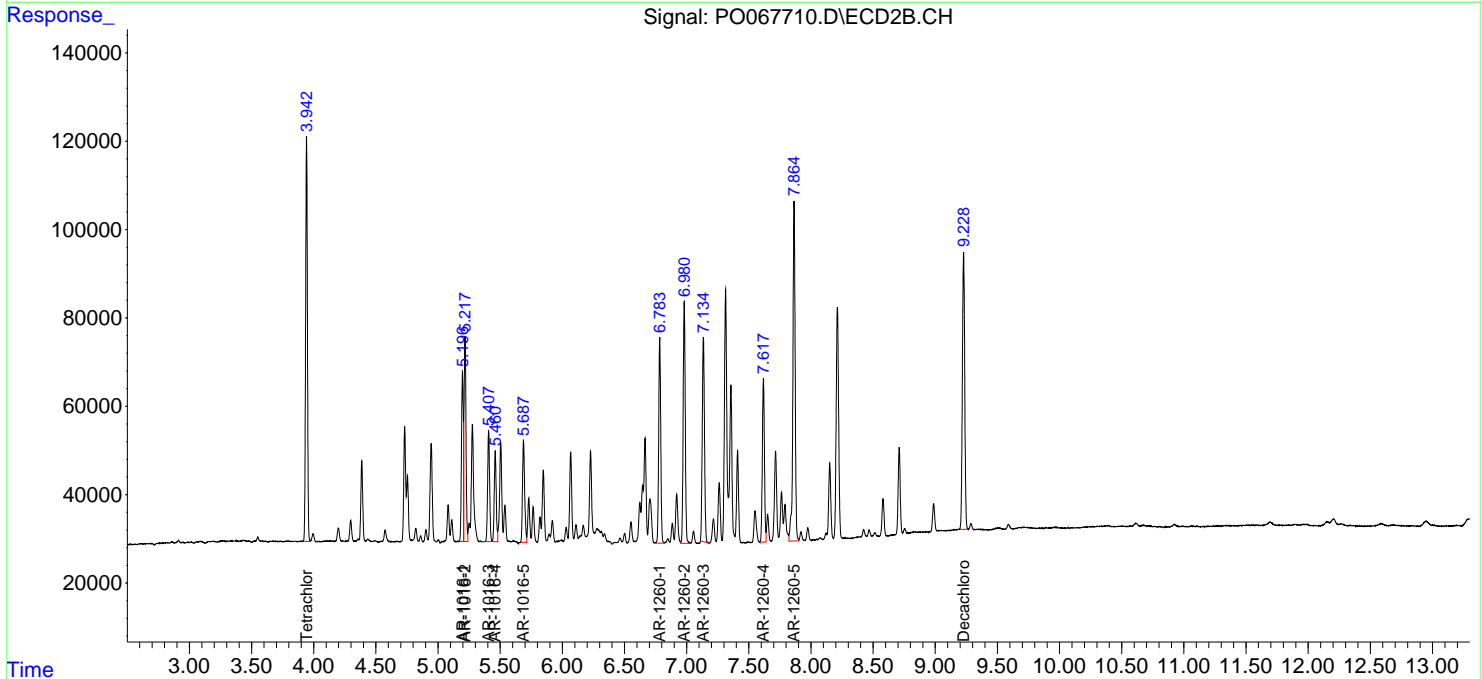
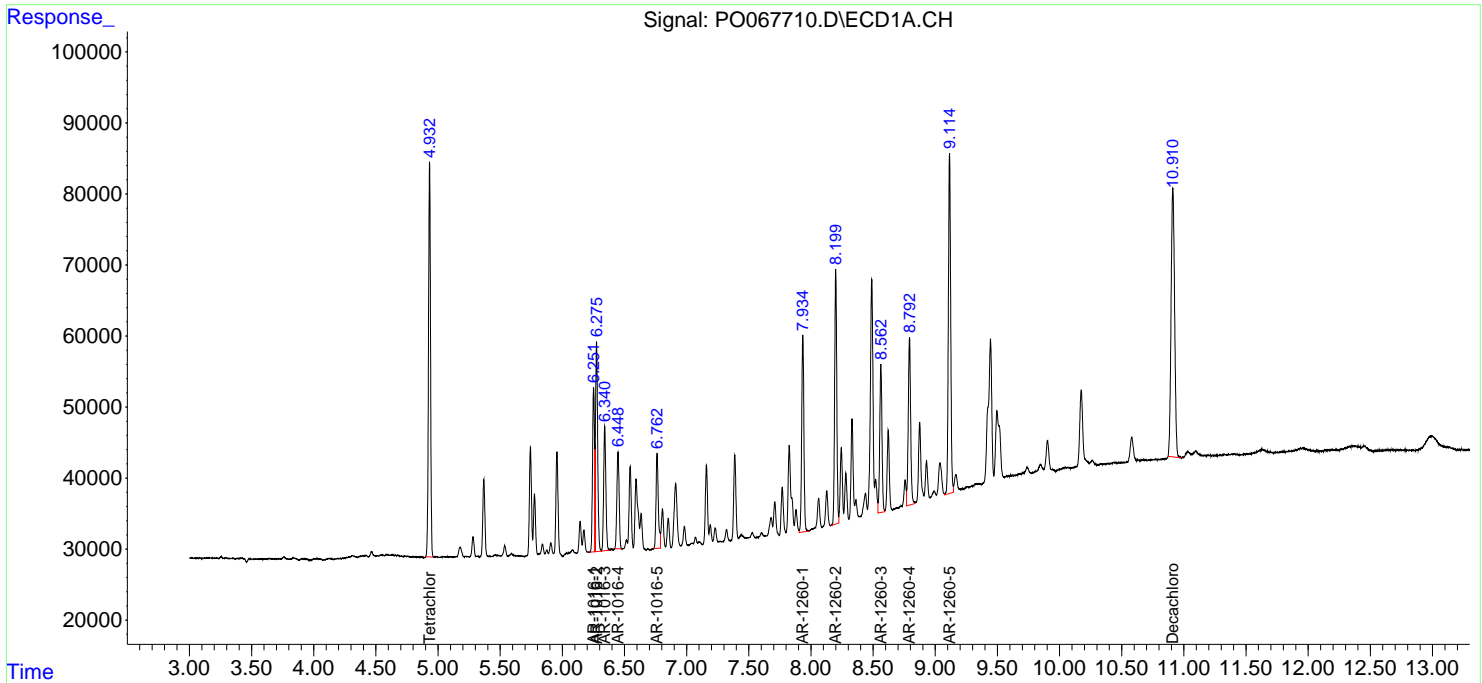
(f)=RT Delta > 1/2 Window (#)=Amounts differ by > 25% (m)=manual int.

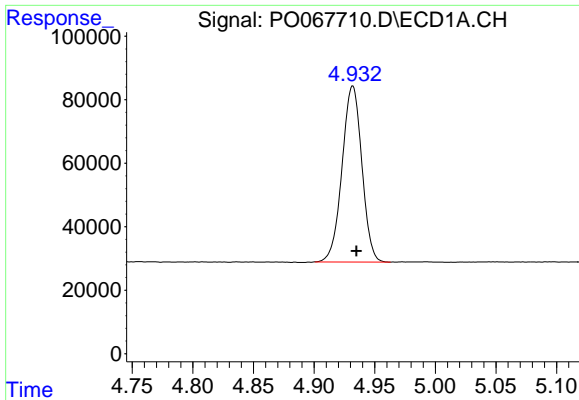
Data Path : Z:\pestpcbsrv\HPCHEM1\ECD\_0\Data\P0040720\  
 Data File : P0067710.D  
 Signal(s) : Signal #1: ECD1A.CH Signal #2: ECD2B.CH  
 Acq On : 07 Apr 2020 11:54  
 Operator : DD\AJ  
 Sample : L2166-19MS  
 Misc :  
 ALS Vial : 11 Sample Multiplier: 1

Instrument :  
 ECD\_O  
 ClientSampled :  
 TP-45-COMPMS

Integration File signal 1: autoint1.e  
 Integration File signal 2: autoint2.e  
 Quant Time: Apr 07 14:48:31 2020  
 Quant Method : Z:\pestpcbsrv\HPCHEM1\ECD\_0\methods\P0040120.M  
 Quant Title : GC EXTRACTABLES  
 QLast Update : Fri Apr 03 16:04:09 2020  
 Response via : Initial Calibration  
 Integrator: ChemStation 6890 Scale Mode: Small noise peaks clipped

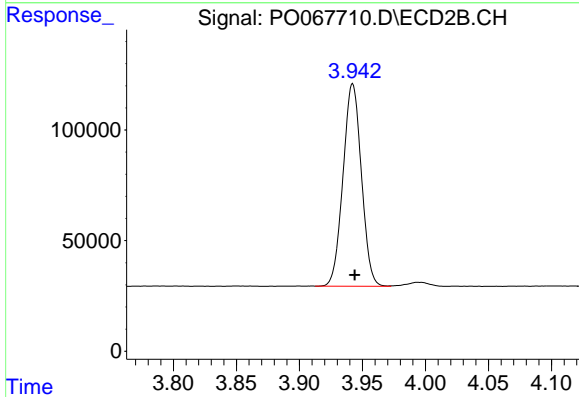
Volume Inj. : 2 µl  
 Signal #1 Phase : ZB-MR1 Signal #2 Phase: ZB-MR2  
 Signal #1 Info : 30Mx0.32mmx 0.50µ Signal #2 Info : 30M x 0.32mm x 0.25µm



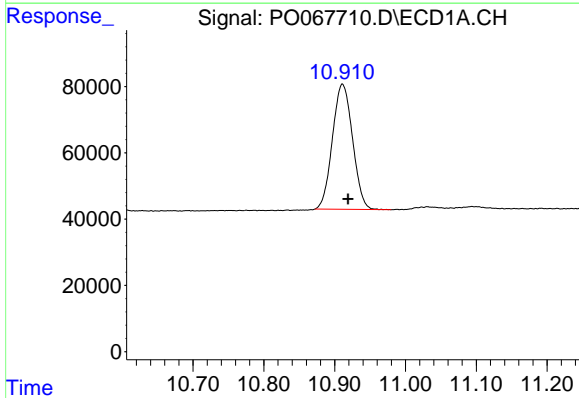


#1 Tetrachloro-m-xylene  
 R.T.: 4.932 min  
 Delta R.T.: -0.003 min  
 Response: 629277  
 Conc: 26.42 ng/ml

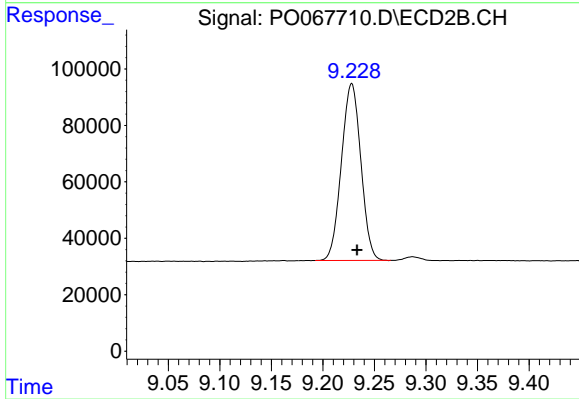
Instrument :  
 ECD\_O  
 ClientSampleId :  
 TP-45-COMPMS



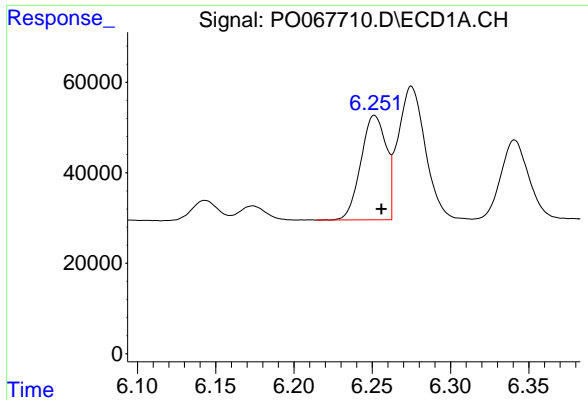
#1 Tetrachloro-m-xylene  
 R.T.: 3.942 min  
 Delta R.T.: -0.002 min  
 Response: 927075  
 Conc: 27.66 ng/ml



#2 Decachlorobiphenyl  
 R.T.: 10.911 min  
 Delta R.T.: -0.008 min  
 Response: 745420  
 Conc: 21.90 ng/ml



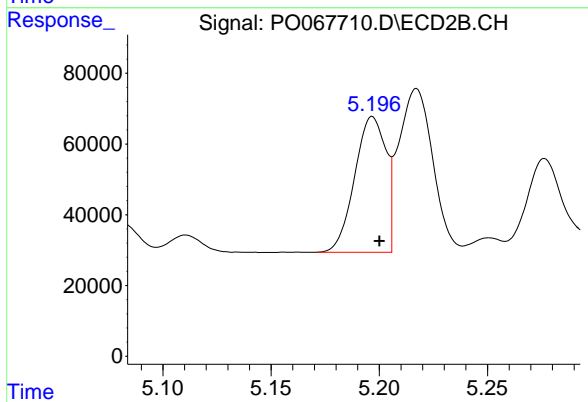
#2 Decachlorobiphenyl  
 R.T.: 9.228 min  
 Delta R.T.: -0.005 min  
 Response: 823089  
 Conc: 19.91 ng/ml



#3 AR-1016-1

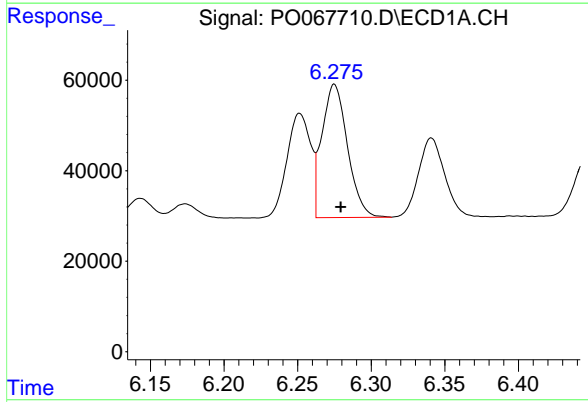
R.T.: 6.251 min  
 Delta R.T.: -0.004 min  
 Response: 258624  
 Conc: 250.79 ng/ml

Instrument :  
 ECD\_O  
 ClientSampled :  
 TP-45-COMPMS



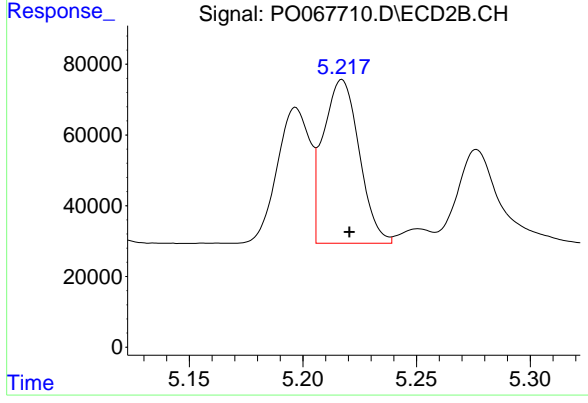
#3 AR-1016-1

R.T.: 5.197 min  
 Delta R.T.: -0.003 min  
 Response: 383923  
 Conc: 261.90 ng/ml



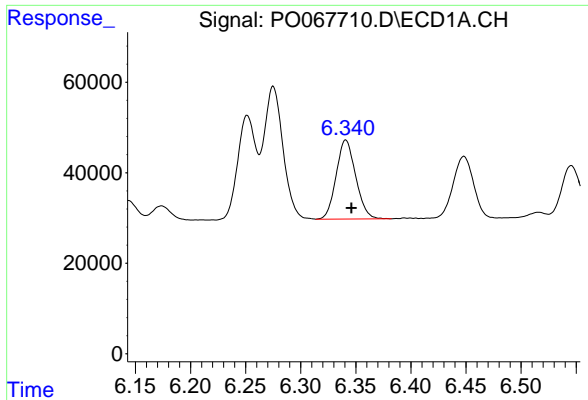
#4 AR-1016-2

R.T.: 6.275 min  
 Delta R.T.: -0.004 min  
 Response: 356297  
 Conc: 252.52 ng/ml



#4 AR-1016-2

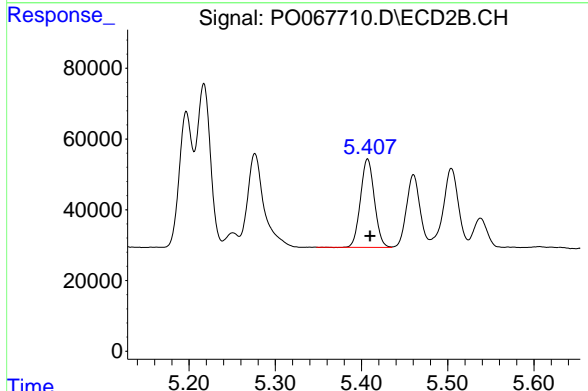
R.T.: 5.217 min  
 Delta R.T.: -0.003 min  
 Response: 510597  
 Conc: 260.64 ng/ml



#5 AR-1016-3

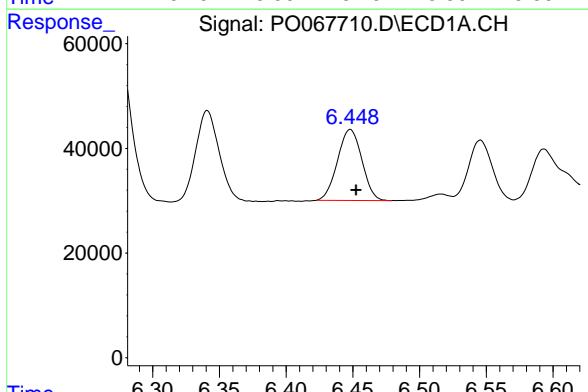
R.T.: 6.341 min  
 Delta R.T.: -0.005 min  
 Response: 215680  
 Conc: 245.37 ng/ml

Instrument :  
 ECD\_O  
 ClientSampled :  
 TP-45-COMPMS



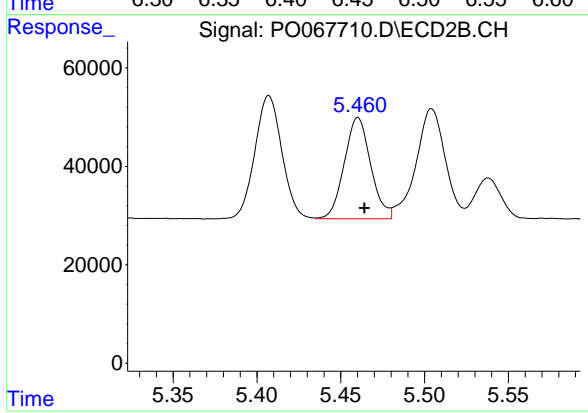
#5 AR-1016-3

R.T.: 5.407 min  
 Delta R.T.: -0.003 min  
 Response: 279348  
 Conc: 267.10 ng/ml



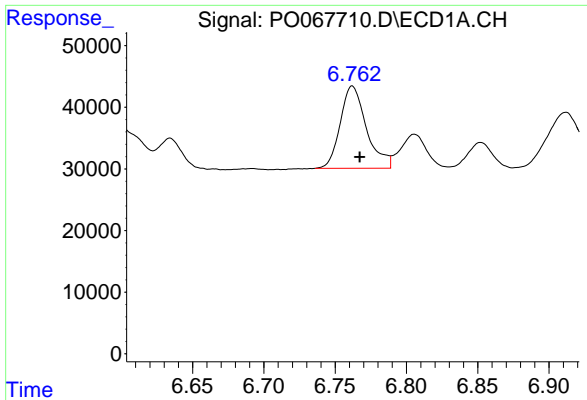
#6 AR-1016-4

R.T.: 6.448 min  
 Delta R.T.: -0.004 min  
 Response: 172619  
 Conc: 244.79 ng/ml



#6 AR-1016-4

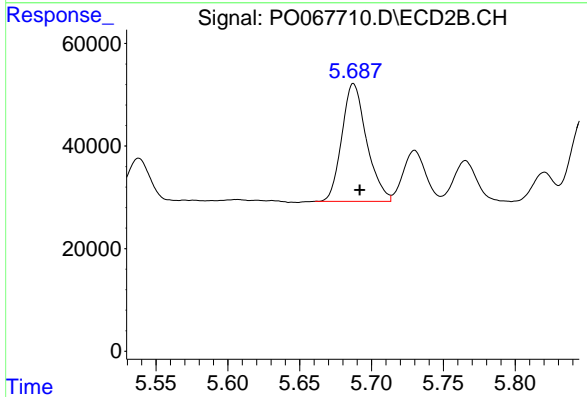
R.T.: 5.460 min  
 Delta R.T.: -0.004 min  
 Response: 225263  
 Conc: 252.51 ng/ml



#7 AR-1016-5

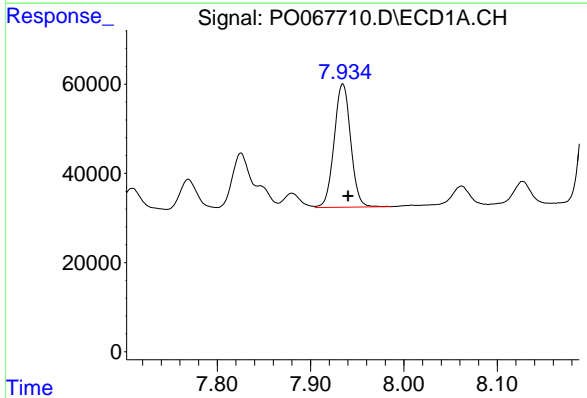
R.T.: 6.762 min  
 Delta R.T.: -0.005 min  
 Response: 170919  
 Conc: 237.70 ng/ml

Instrument :  
 ECD\_O  
 ClientSampleId :  
 TP-45-COMPMS



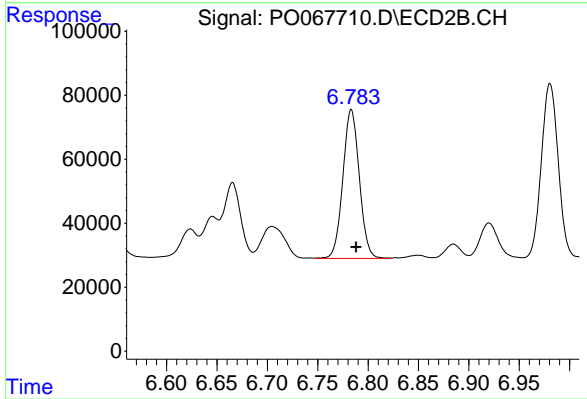
#7 AR-1016-5

R.T.: 5.688 min  
 Delta R.T.: -0.004 min  
 Response: 275949  
 Conc: 243.85 ng/ml



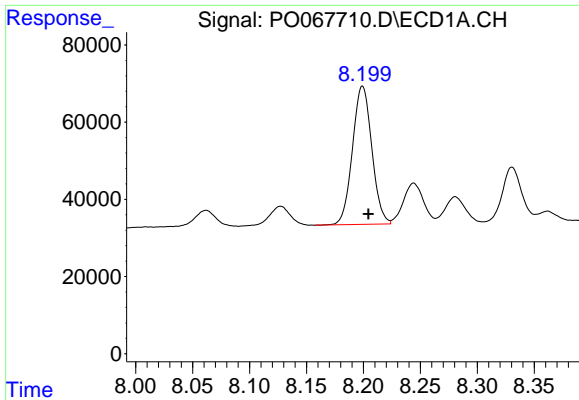
#31 AR-1260-1

R.T.: 7.935 min  
 Delta R.T.: -0.005 min  
 Response: 340265  
 Conc: 251.78 ng/ml



#31 AR-1260-1

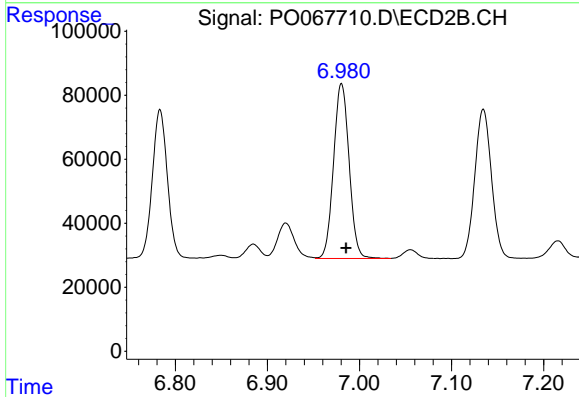
R.T.: 6.783 min  
 Delta R.T.: -0.005 min  
 Response: 528111  
 Conc: 251.91 ng/ml



#32 AR-1260-2

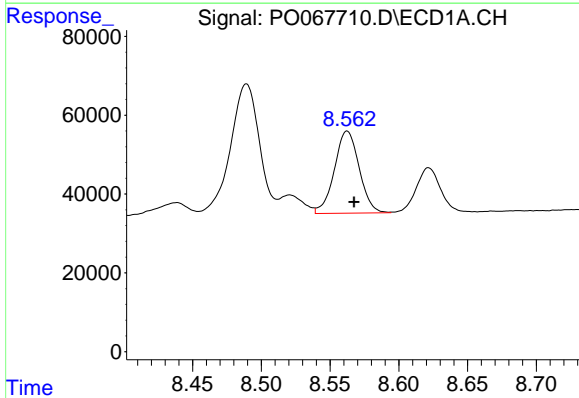
R.T.: 8.199 min  
 Delta R.T.: -0.005 min  
 Response: 423683  
 Conc: 250.97 ng/ml

Instrument :  
 ECD\_O  
 ClientSampleId :  
 TP-45-COMPMS



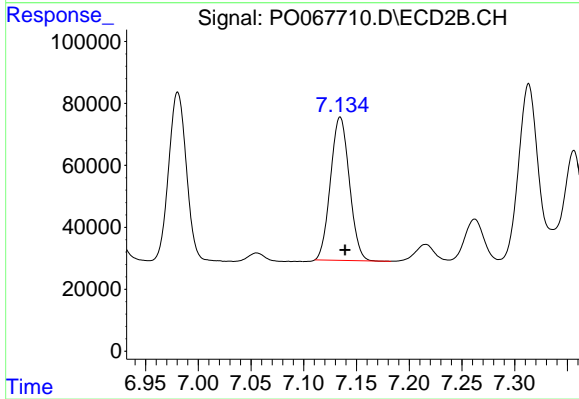
#32 AR-1260-2

R.T.: 6.981 min  
 Delta R.T.: -0.005 min  
 Response: 640727  
 Conc: 249.53 ng/ml



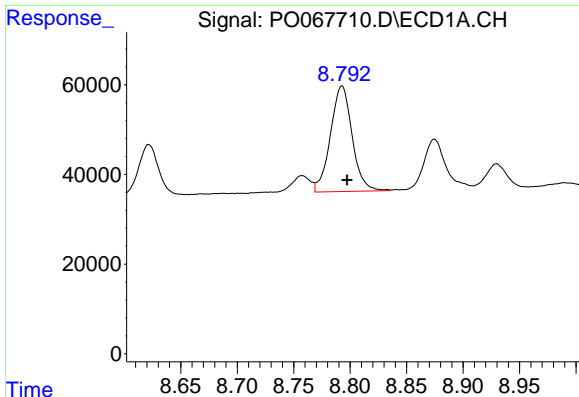
#33 AR-1260-3

R.T.: 8.562 min  
 Delta R.T.: -0.005 min  
 Response: 261300  
 Conc: 200.46 ng/ml



#33 AR-1260-3

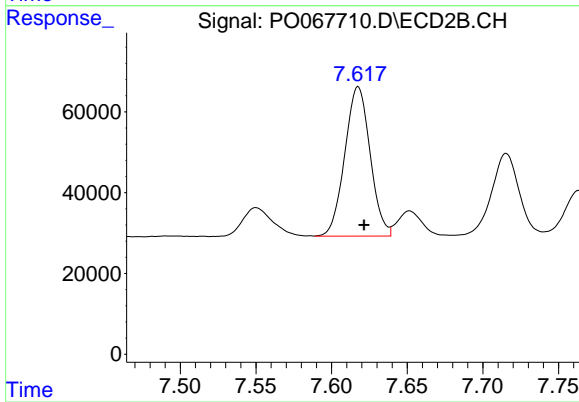
R.T.: 7.135 min  
 Delta R.T.: -0.005 min  
 Response: 574587  
 Conc: 238.95 ng/ml



#34 AR-1260-4

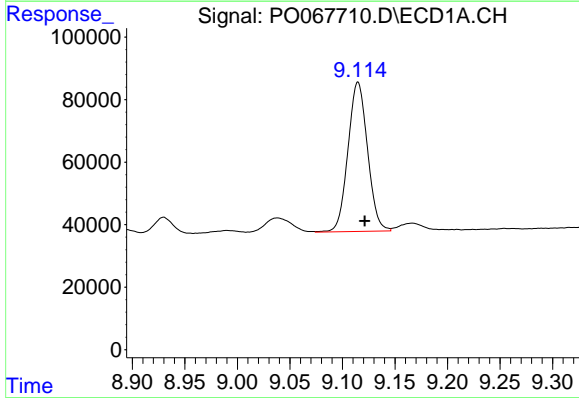
R.T.: 8.793 min  
 Delta R.T.: -0.005 min  
 Response: 315628  
 Conc: 205.38 ng/ml

Instrument :  
 ECD\_O  
 ClientSampleId :  
 TP-45-COMPMS



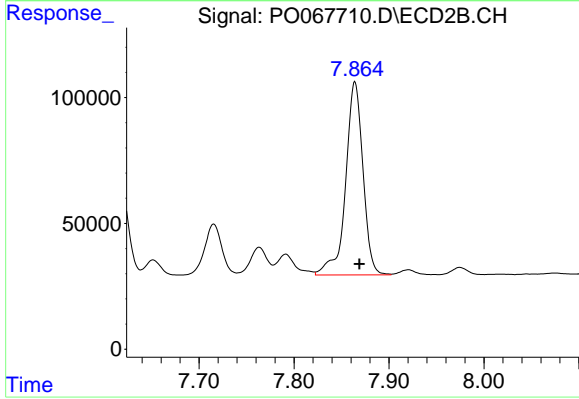
#34 AR-1260-4

R.T.: 7.618 min  
 Delta R.T.: -0.004 min  
 Response: 431077  
 Conc: 205.11 ng/ml



#35 AR-1260-5

R.T.: 9.115 min  
 Delta R.T.: -0.007 min  
 Response: 619204  
 Conc: 196.29 ng/ml



#35 AR-1260-5

R.T.: 7.864 min  
 Delta R.T.: -0.004 min  
 Response: 975330  
 Conc: 192.66 ng/ml