

Data Path : P:\HPCHEM1\ECD O\Data\PO041018\
 Data File : PO043766.D
 Signal(s) : Signal #1: ECD1A.CH Signal #2: ECD2B.CH
 Acq On : 10 Apr 2018 23:11
 Operator : SM/UA
 Sample : J2282-01MSD
 Misc :
 ALS Vial : 24 Sample Multiplier: 1

Instrument :
 ECD_O
ClientSampleId :
 EPE-L-6(20-22)MSD

Manual Integrations
APPROVED
 ugo
 4/16/2018 10:12:08 AM

Integration File signal 1: autoint1.e
 Integration File signal 2: autoint2.e
 Quant Time: Apr 11 04:20:11 2018
 Quant Method : P:\HPCHEM1\ECD_O\methods\PO040418.M
 Quant Title : GC EXTRACTABLES
 QLast Update : Wed Apr 04 15:17:57 2018
 Response via : Initial Calibration
 Integrator: ChemStation 6890 Scale Mode: Small noise peaks clipped

Volume Inj. : 2 µl
 Signal #1 Phase : ZB-MR1 Signal #2 Phase: ZB-MR2
 Signal #1 Info : 30Mx0.32mmx 0.50µ Signal #2 Info : 30M x 0.32mm x 0.25µm

Compound	RT#1	RT#2	Resp#1	Resp#2	ng/ml	ng/ml

System Monitoring Compounds						
1) SA Tetrachlo...	4.063	3.324	6556194	8262176	36.879	30.750
2) SA Decachlor...	9.394	8.079	3681259	4127833	20.428m	17.607m
Target Compounds						
3) L1 AR-1016-1	4.923	4.137	1748119	2312836	396.466	339.209
4) L1 AR-1016-2	5.263	4.570	2289595	1921589	386.697	329.757
5) L1 AR-1016-3	5.357	4.609	1498633	2275603	310.480	322.551
6) L1 AR-1016-4	5.776	4.772	1357908	2226760	242.013	288.444
7) L1 AR-1016-5	6.006	5.106	1183580	1907098	249.440	256.095
31) L7 AR-1260-1	6.733	5.760	2618674	4204709	259.928	251.572
32) L7 AR-1260-2	6.984	5.946	3190298	5225143	248.653m	246.934
33) L7 AR-1260-3	7.336	6.261	2116583	5259450	209.341	238.844
34) L7 AR-1260-4	7.855	6.789	4350491	7447894	210.270m	201.623
35) L7 AR-1260-5	8.139	7.123	2552356	4786487	203.874	186.130

(f)=RT Delta > 1/2 Window (#)=Amounts differ by > 25% (m)=manual int.

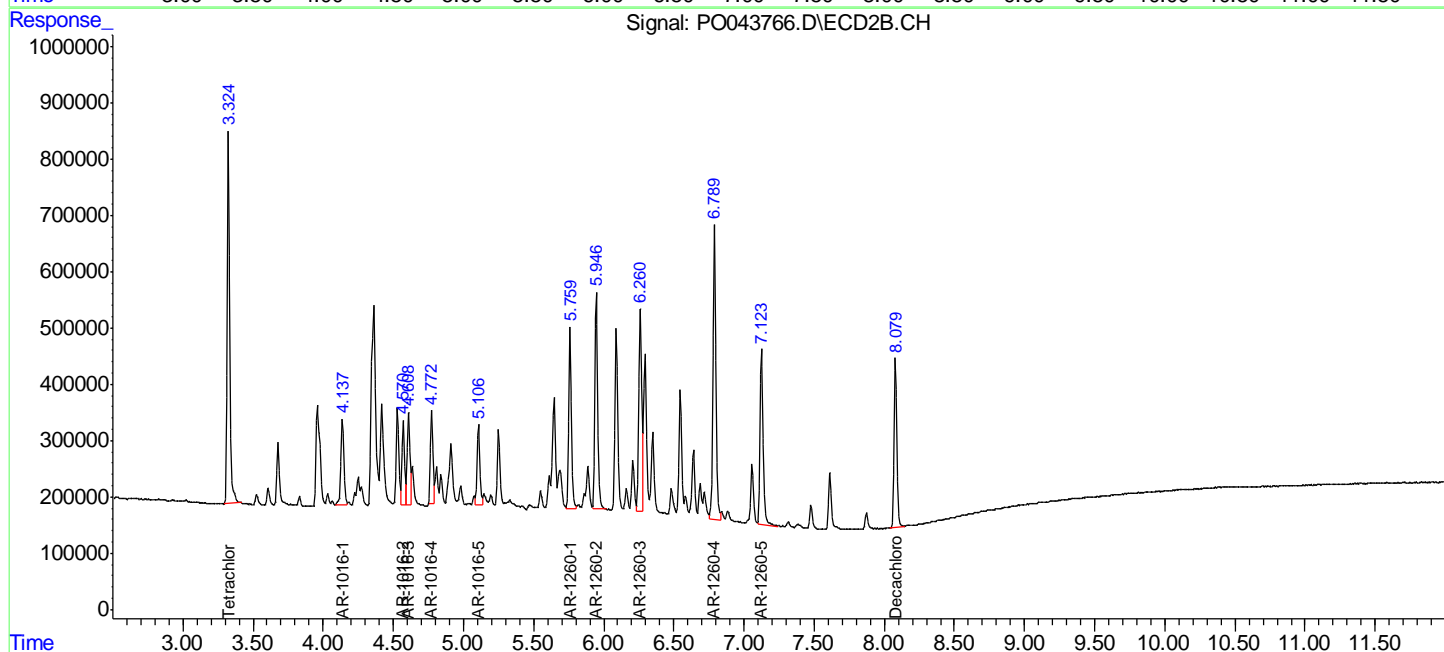
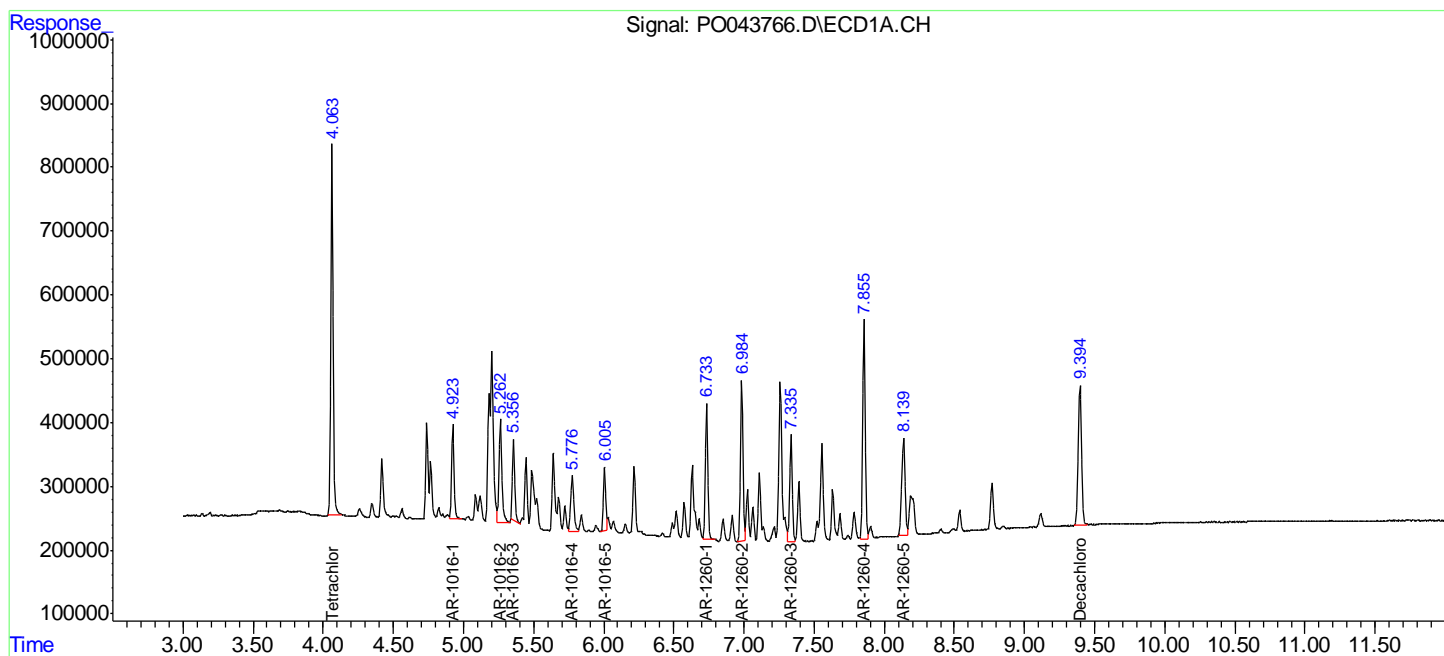
Data Path : P:\HPCHEM1\ECD O\Data\PO041018\
 Data File : PO043766.D
 Signal(s) : Signal #1: ECD1A.CH Signal #2: ECD2B.CH
 Acq On : 10 Apr 2018 23:11
 Operator : SM/UA
 Sample : J2282-01MSD
 Misc :
 ALS Vial : 24 Sample Multiplier: 1

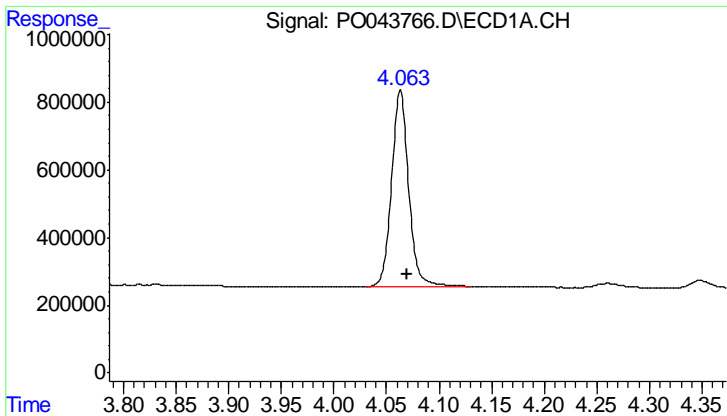
Instrument :
 ECD_O
 Client Sampled :
 EPE-L-6(20-22)MSD

Manual Integrations
APPROVED
 ugo
 4/16/2018 10:12:08 AM

Integration File signal 1: autoint1.e
 Integration File signal 2: autoint2.e
 Quant Time: Apr 11 04:20:11 2018
 Quant Method : P:\HPCHEM1\ECD_O\methods\PO040418.M
 Quant Title : GC EXTRACTABLES
 QLast Update : Wed Apr 04 15:17:57 2018
 Response via : Initial Calibration
 Integrator: ChemStation 6890 Scale Mode: Small noise peaks clipped

Volume Inj. : 2 µl
 Signal #1 Phase : ZB-MR1 Signal #2 Phase: ZB-MR2
 Signal #1 Info : 30Mx0.32mmx 0.50µ Signal #2 Info : 30M x 0.32mm x 0.25µm



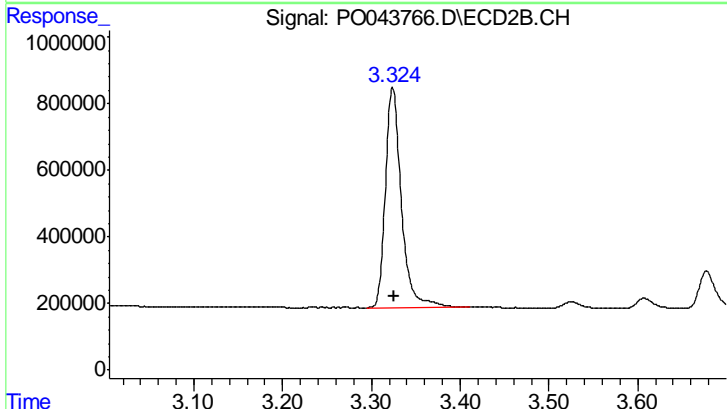


#1 Tetrachloro-m-xylene

R.T.: 4.063 min
 Delta R.T.: -0.006 min
 Response: 6556194
 Conc: 36.88 ng/ml

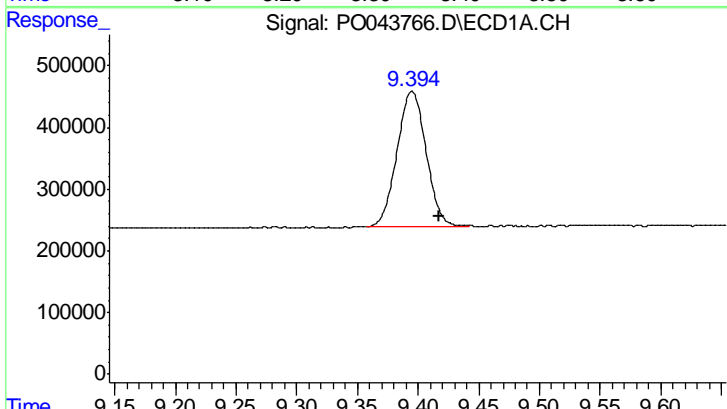
Instrument :
 ECD_O
 ClientSampleId :
 EPE-L-6(20-22)MSD

Manual Integrations
 APPROVED
 ugo
 4/16/2018 10:12:08 AM



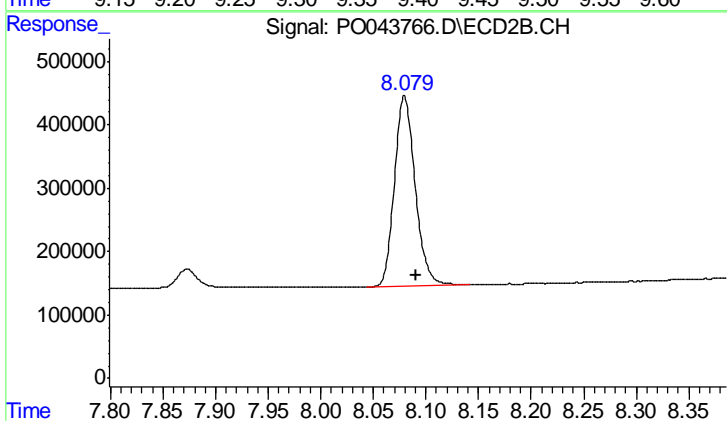
#1 Tetrachloro-m-xylene

R.T.: 3.324 min
 Delta R.T.: -0.002 min
 Response: 8262176
 Conc: 30.75 ng/ml



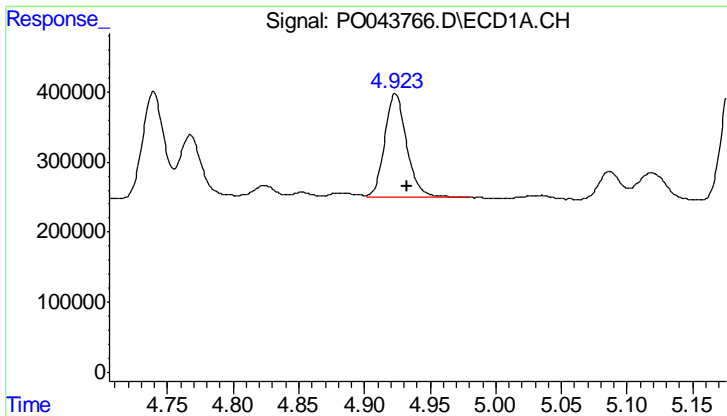
#2 Decachlorobiphenyl

R.T.: 9.394 min
 Delta R.T.: -0.023 min
 Response: 3681259
 Conc: 20.43 ng/ml m



#2 Decachlorobiphenyl

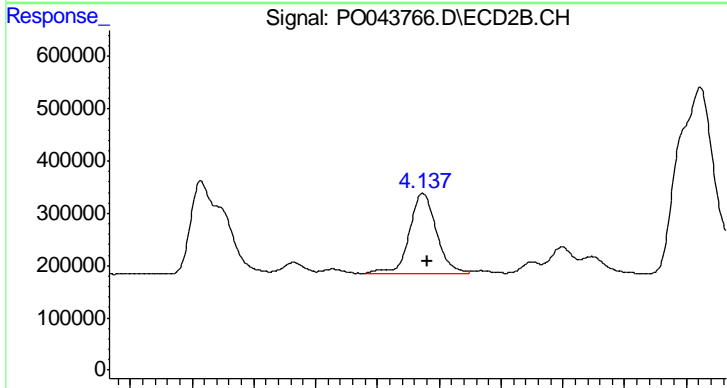
R.T.: 8.079 min
 Delta R.T.: -0.011 min
 Response: 4127833
 Conc: 17.61 ng/ml m



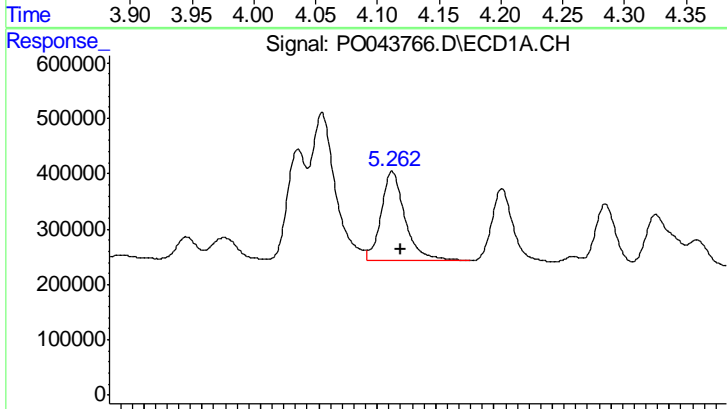
#3 AR-1016-1
 R.T.: 4.923 min
 Delta R.T.: -0.009 min
 Response: 1748119
 Conc: 396.47 ng/ml

Instrument :
 ECD_O
ClientSampled :
 EPE-L-6(20-22)MSD

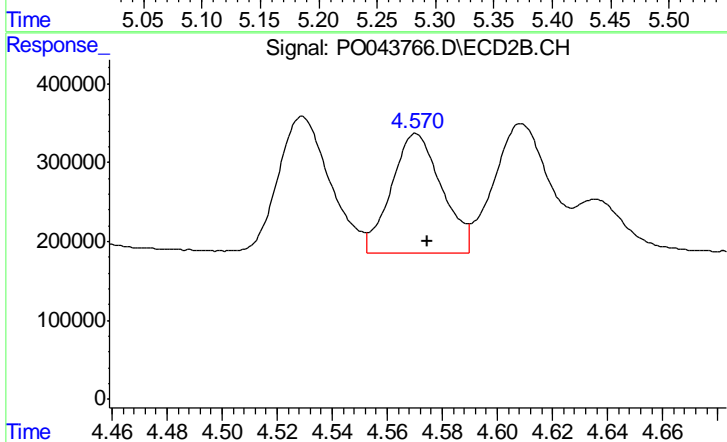
Manual Integrations
APPROVED
 ugo
 4/16/2018 10:12:08 AM



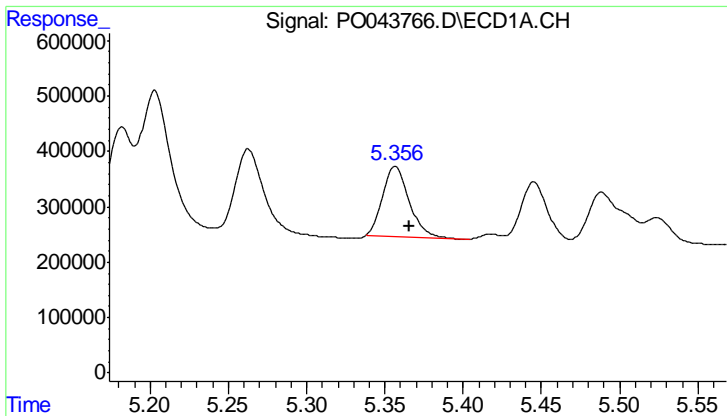
#3 AR-1016-1
 R.T.: 4.137 min
 Delta R.T.: -0.004 min
 Response: 2312836
 Conc: 339.21 ng/ml



#4 AR-1016-2
 R.T.: 5.263 min
 Delta R.T.: -0.008 min
 Response: 2289595
 Conc: 386.70 ng/ml



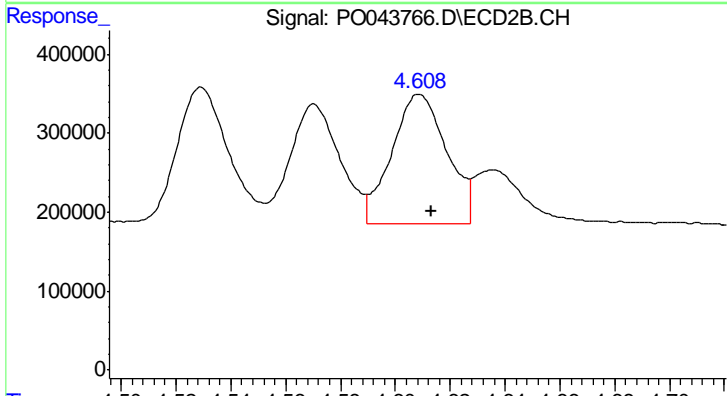
#4 AR-1016-2
 R.T.: 4.570 min
 Delta R.T.: -0.004 min
 Response: 1921589
 Conc: 329.76 ng/ml



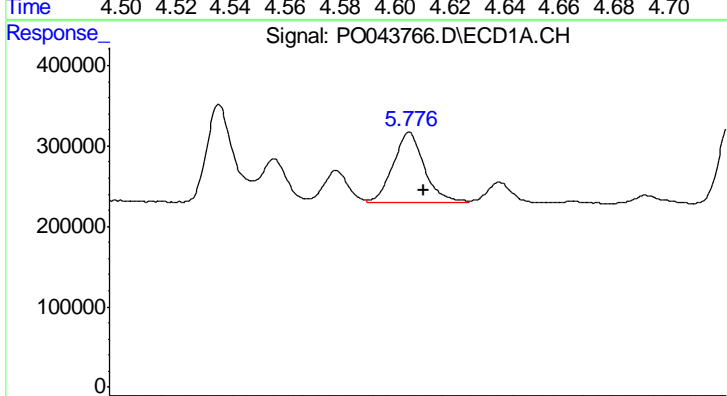
#5 AR-1016-3
 R.T.: 5.357 min
 Delta R.T.: -0.009 min
 Response: 1498633
 Conc: 310.48 ng/ml

Instrument :
 ECD_O
ClientSampled :
 EPE-L-6(20-22)MSD

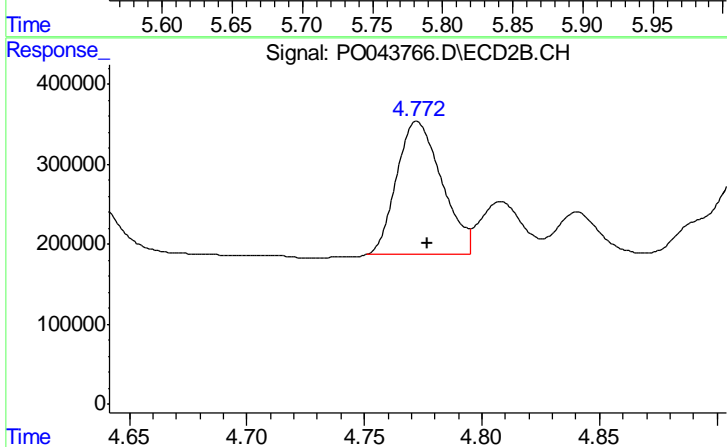
Manual Integrations
APPROVED
 ugo
 4/16/2018 10:12:08 AM



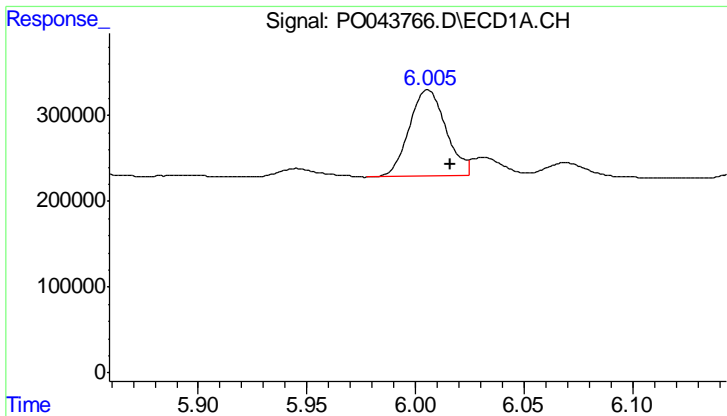
#5 AR-1016-3
 R.T.: 4.609 min
 Delta R.T.: -0.004 min
 Response: 2275603
 Conc: 322.55 ng/ml



#6 AR-1016-4
 R.T.: 5.776 min
 Delta R.T.: -0.010 min
 Response: 1357908
 Conc: 242.01 ng/ml



#6 AR-1016-4
 R.T.: 4.772 min
 Delta R.T.: -0.005 min
 Response: 2226760
 Conc: 288.44 ng/ml

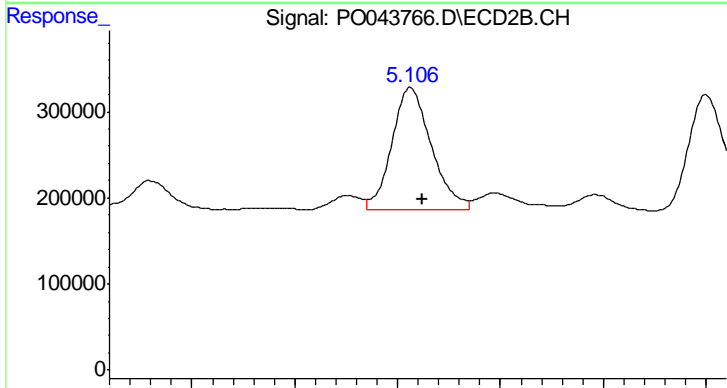


#7 AR-1016-5

R.T.: 6.006 min
 Delta R.T.: -0.011 min
 Response: 1183580
 Conc: 249.44 ng/ml

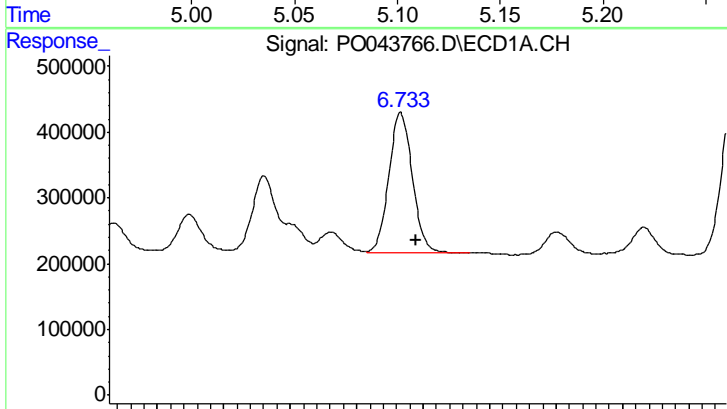
Instrument :
 ECD_O
ClientSampled :
 EPE-L-6(20-22)MSD

Manual Integrations
APPROVED
 ugo
 4/16/2018 10:12:08 AM



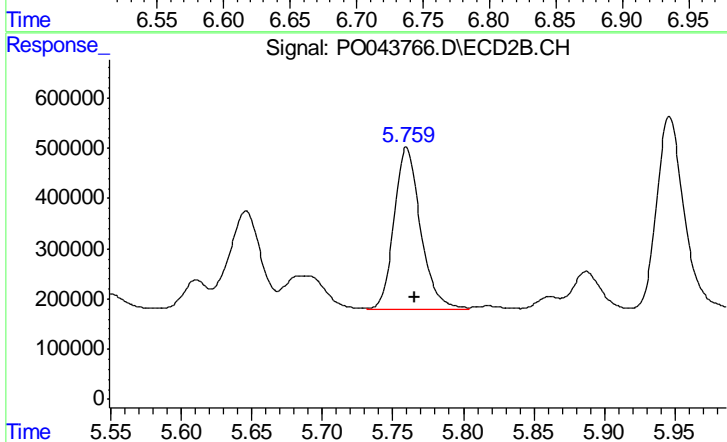
#7 AR-1016-5

R.T.: 5.106 min
 Delta R.T.: -0.006 min
 Response: 1907098
 Conc: 256.09 ng/ml



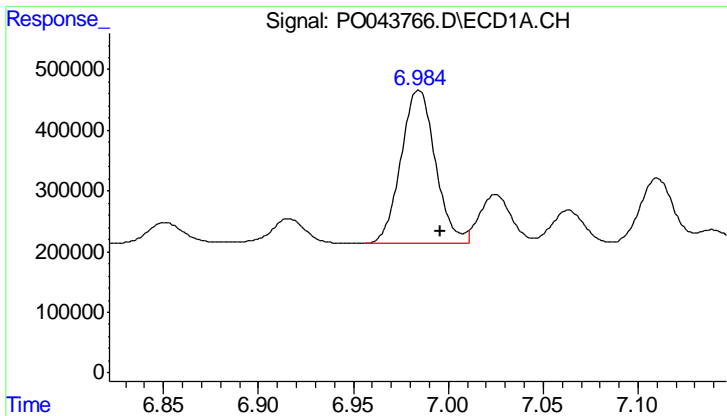
#31 AR-1260-1

R.T.: 6.733 min
 Delta R.T.: -0.012 min
 Response: 2618674
 Conc: 259.93 ng/ml



#31 AR-1260-1

R.T.: 5.760 min
 Delta R.T.: -0.006 min
 Response: 4204709
 Conc: 251.57 ng/ml

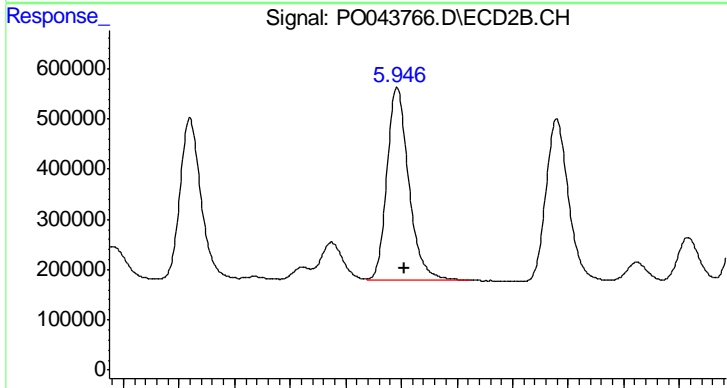


#32 AR-1260-2

R.T.: 6.984 min
 Delta R.T.: -0.012 min
 Response: 3190298
 Conc: 248.65 ng/ml

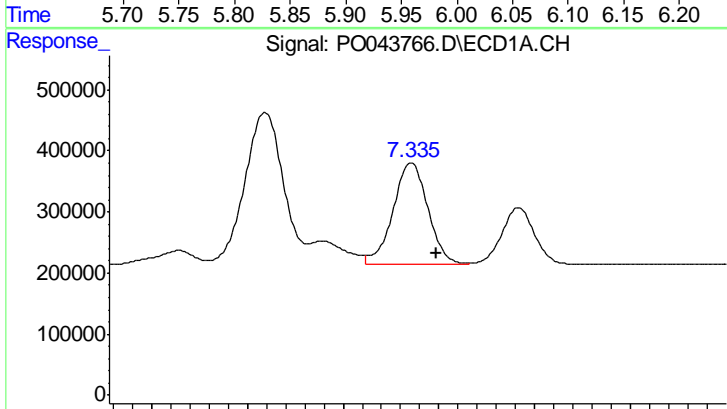
Instrument :
 ECD_O
ClientSampled :
 EPE-L-6(20-22)MSD

Manual Integrations
APPROVED
 ugo
 4/16/2018 10:12:08 AM



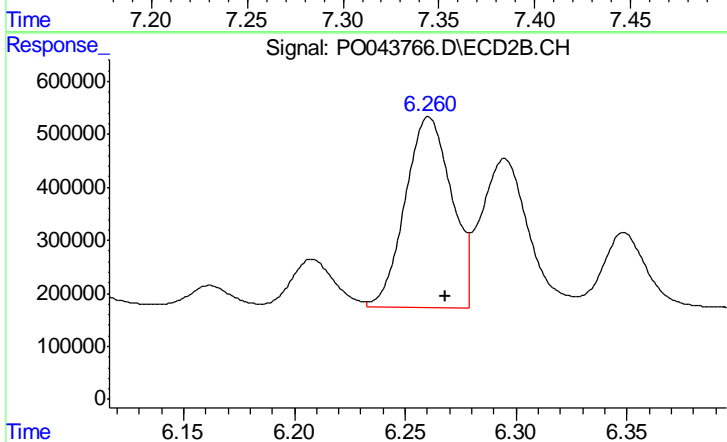
#32 AR-1260-2

R.T.: 5.946 min
 Delta R.T.: -0.006 min
 Response: 5225143
 Conc: 246.93 ng/ml



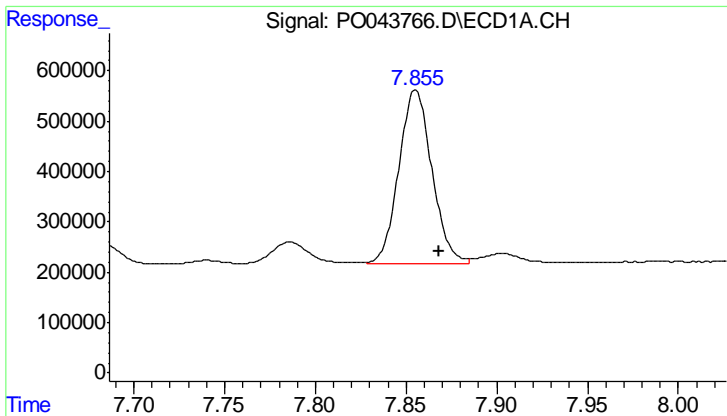
#33 AR-1260-3

R.T.: 7.336 min
 Delta R.T.: -0.013 min
 Response: 2116583
 Conc: 209.34 ng/ml



#33 AR-1260-3

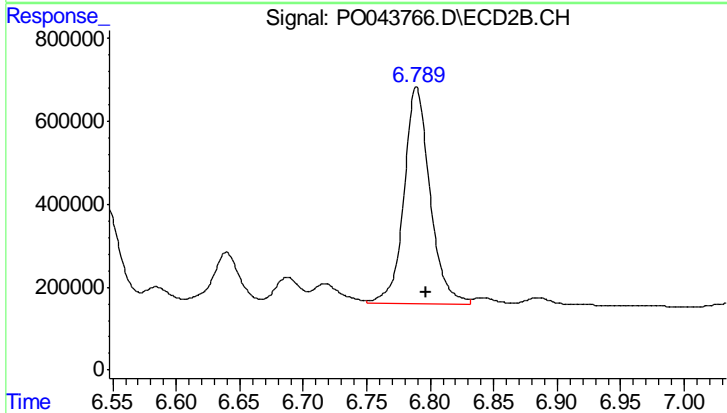
R.T.: 6.261 min
 Delta R.T.: -0.007 min
 Response: 5259450
 Conc: 238.84 ng/ml



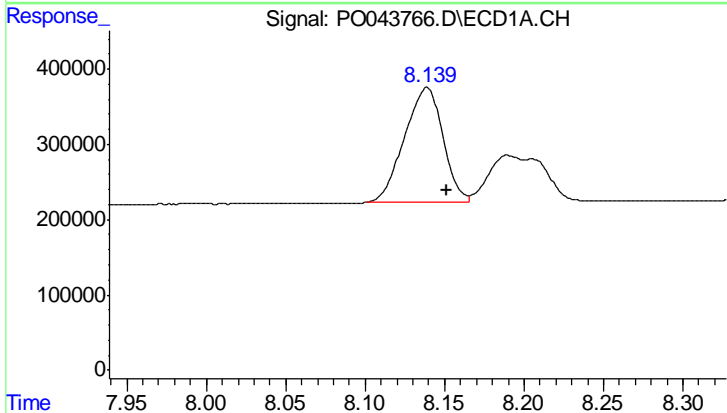
#34 AR-1260-4
 R.T.: 7.855 min
 Delta R.T.: -0.014 min
 Response: 4350491
 Conc: 210.27 ng/ml

Instrument :
 ECD_O
ClientSampleId :
 EPE-L-6(20-22)MSD

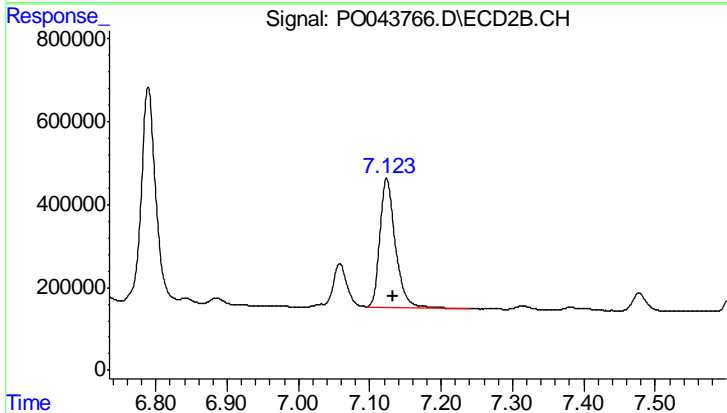
Manual Integrations
APPROVED
 ugo
 4/16/2018 10:12:08 AM



#34 AR-1260-4
 R.T.: 6.789 min
 Delta R.T.: -0.008 min
 Response: 7447894
 Conc: 201.62 ng/ml



#35 AR-1260-5
 R.T.: 8.139 min
 Delta R.T.: -0.012 min
 Response: 2552356
 Conc: 203.87 ng/ml



#35 AR-1260-5
 R.T.: 7.123 min
 Delta R.T.: -0.008 min
 Response: 4786487
 Conc: 186.13 ng/ml