

Data Path : P:\HPCHEM1\ECD_O\Data\PO041318\
 Data File : PO043856.D
 Signal(s) : Signal #1: ECD1A.CH Signal #2: ECD2B.CH
 Acq On : 13 Apr 2018 12:57
 Operator : SM/UA
 Sample : PB108107BL
 Misc :
 ALS Vial : 6 Sample Multiplier: 1

Instrument :
 ECD_O
 ClientSampleId :
 PB108107BL

Integration File signal 1: autoint1.e
 Integration File signal 2: autoint2.e
 Quant Time: Apr 13 13:20:24 2018
 Quant Method : P:\HPCHEM1\ECD_O\methods\PO040418.M
 Quant Title : GC EXTRACTABLES
 QLast Update : Wed Apr 04 15:17:57 2018
 Response via : Initial Calibration
 Integrator: ChemStation 6890 Scale Mode: Small noise peaks clipped

Volume Inj. : 2 µl
 Signal #1 Phase : ZB-MR1 Signal #2 Phase: ZB-MR2
 Signal #1 Info : 30Mx0.32mmx 0.50µ Signal #2 Info : 30M x 0.32mm x 0.25µm

Compound	RT#1	RT#2	Resp#1	Resp#2	ng/ml	ng/ml

System Monitoring Compounds						
1) SA Tetrachlo...	4.057	3.317	3901572	5064868	21.946	18.851
2) SA Decachlor...	9.388	8.075	982336	4639869	5.451	19.791 #
Target Compounds						
28) L6 AR-1254-3	6.575	5.630	350529	-9957	21.240	N.D. #
32) L7 AR-1260-2	0.000	5.943	0	469271	N.D.	22.177 #
36) L8 AR-1262-1	0.000	5.943	0	469271	N.D.	21.570 #

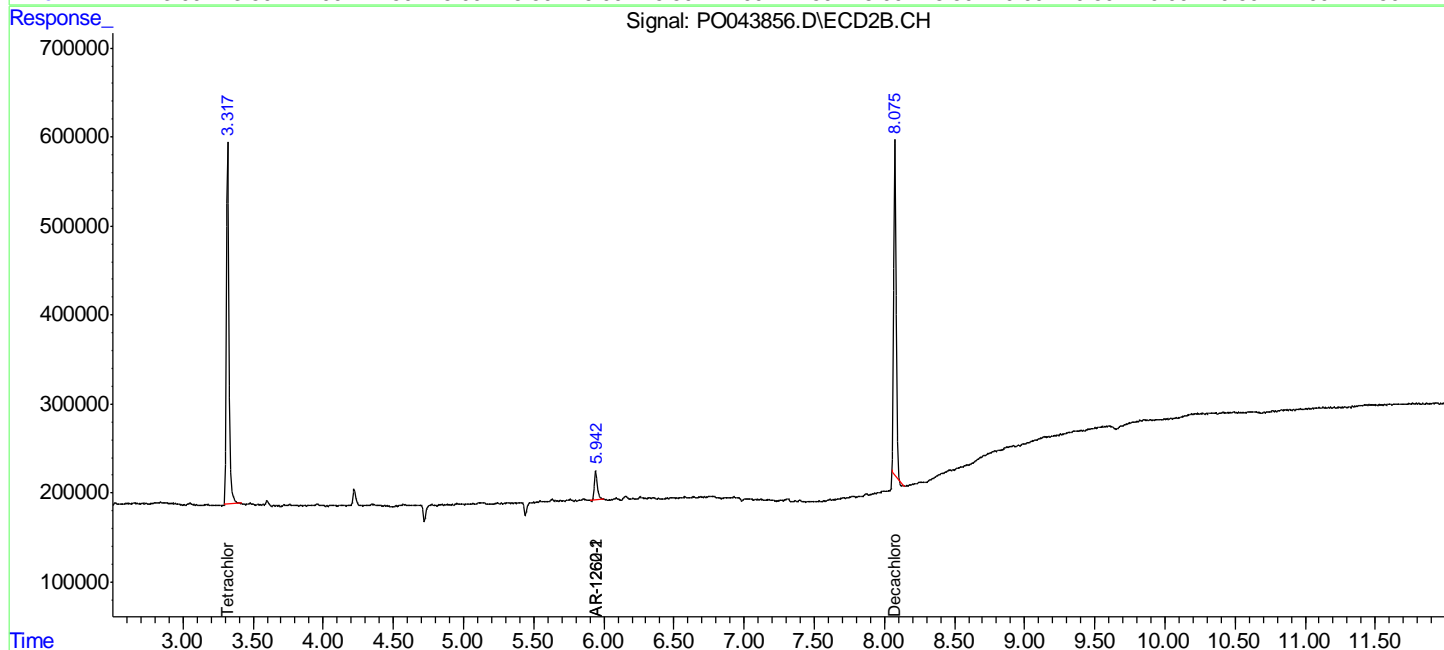
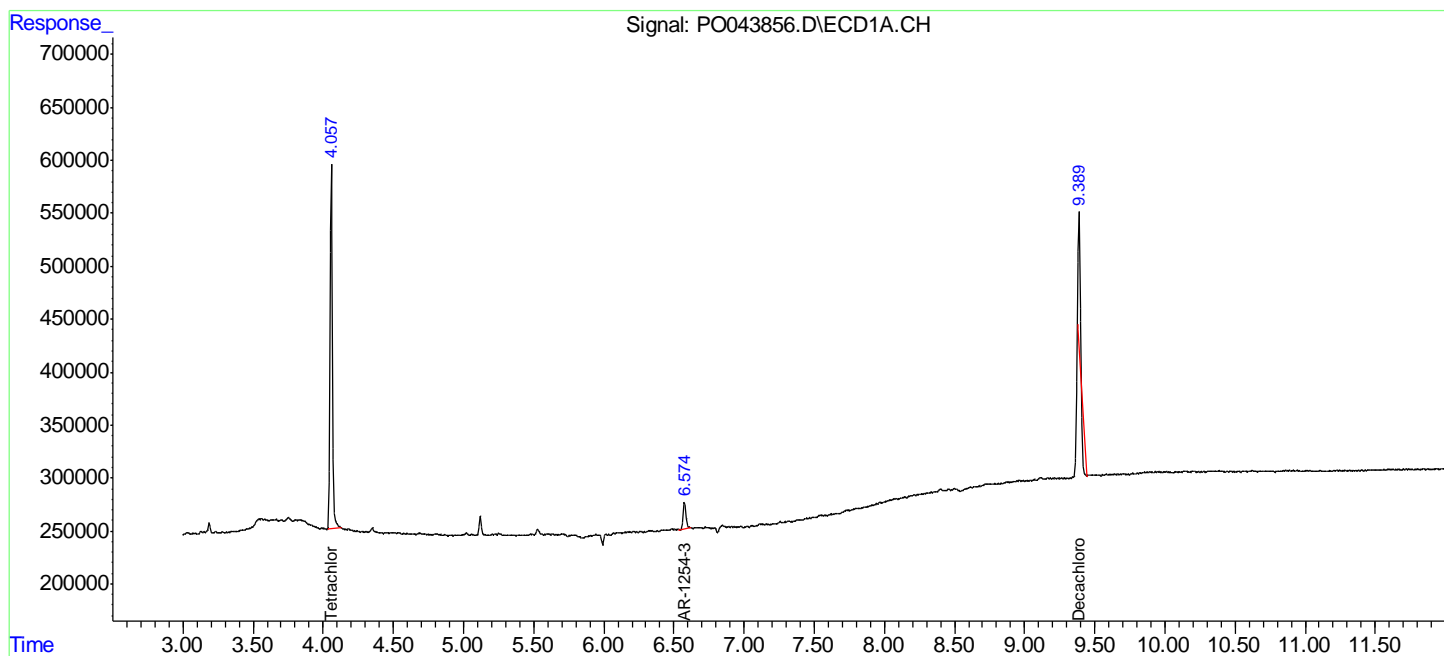
(f)=RT Delta > 1/2 Window (#)=Amounts differ by > 25% (m)=manual int.

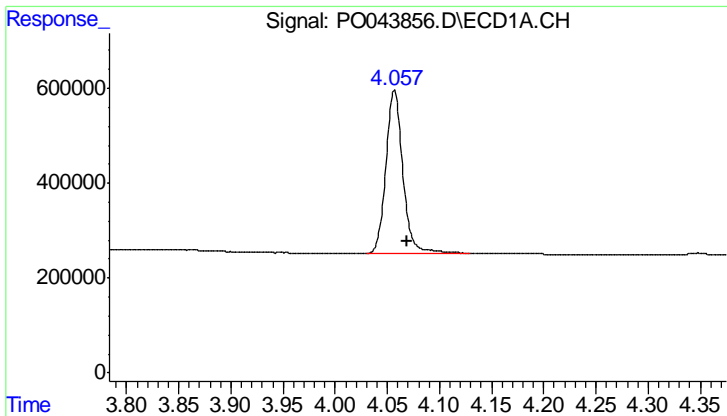
Data Path : P:\HPCHEM1\ECD_O\Data\PO041318\
 Data File : PO043856.D
 Signal(s) : Signal #1: ECD1A.CH Signal #2: ECD2B.CH
 Acq On : 13 Apr 2018 12:57
 Operator : SM/UA
 Sample : PB108107BL
 Misc :
 ALS Vial : 6 Sample Multiplier: 1

Instrument :
 ECD_O
 ClientSampleId :
 PB108107BL

Integration File signal 1: autoint1.e
 Integration File signal 2: autoint2.e
 Quant Time: Apr 13 13:20:24 2018
 Quant Method : P:\HPCHEM1\ECD_O\methods\PO040418.M
 Quant Title : GC EXTRACTABLES
 QLast Update : Wed Apr 04 15:17:57 2018
 Response via : Initial Calibration
 Integrator: ChemStation 6890 Scale Mode: Small noise peaks clipped

Volume Inj. : 2 µl
 Signal #1 Phase : ZB-MR1 Signal #2 Phase: ZB-MR2
 Signal #1 Info : 30Mx0.32mmx 0.50µ Signal #2 Info : 30M x 0.32mm x 0.25µm

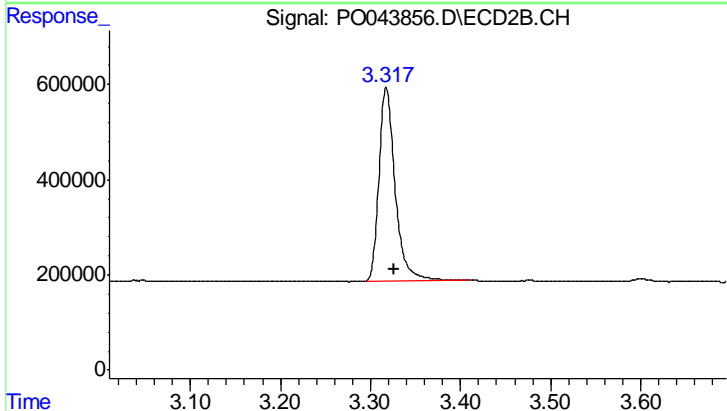




#1 Tetrachloro-m-xylene

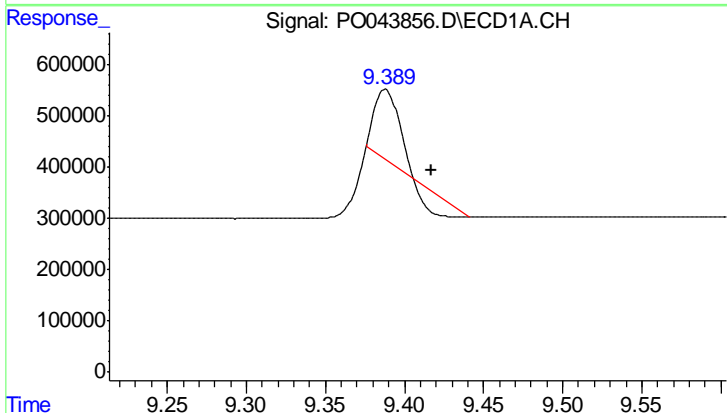
R.T.: 4.057 min
 Delta R.T.: -0.013 min
 Response: 3901572
 Conc: 21.95 ng/ml

Instrument :
 ECD_O
 ClientSampleId :
 PB108107BL



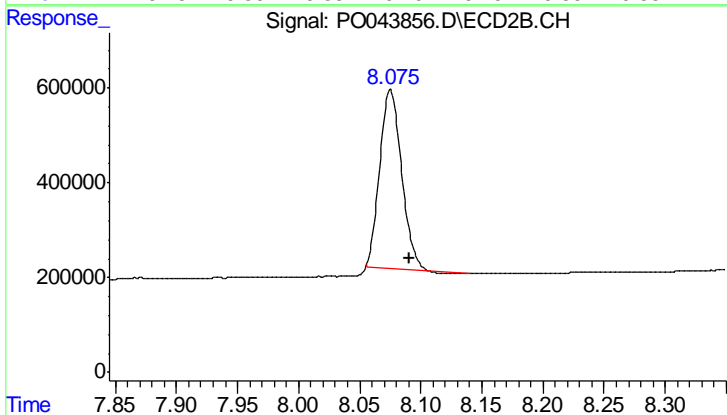
#1 Tetrachloro-m-xylene

R.T.: 3.317 min
 Delta R.T.: -0.009 min
 Response: 5064868
 Conc: 18.85 ng/ml



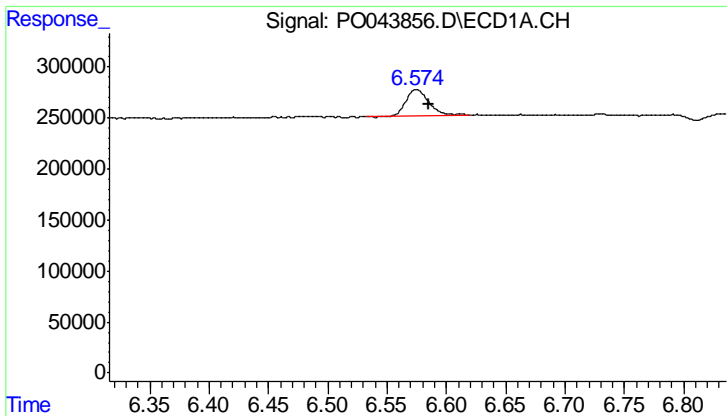
#2 Decachlorobiphenyl

R.T.: 9.388 min
 Delta R.T.: -0.029 min
 Response: 982336
 Conc: 5.45 ng/ml



#2 Decachlorobiphenyl

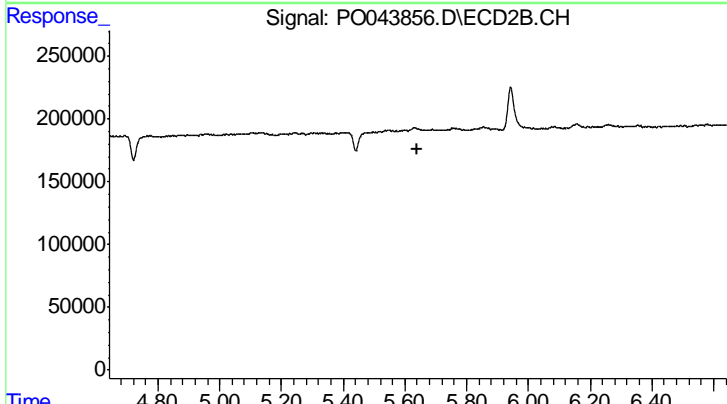
R.T.: 8.075 min
 Delta R.T.: -0.015 min
 Response: 4639869
 Conc: 19.79 ng/ml



#28 AR-1254-3

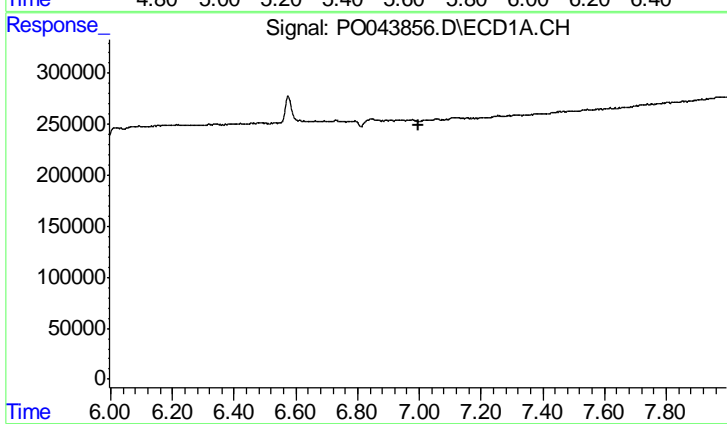
R.T.: 6.575 min
 Delta R.T.: -0.011 min
 Response: 350529
 Conc: 21.24 ng/ml

Instrument :
 ECD_O
 ClientSampled :
 PB108107BL



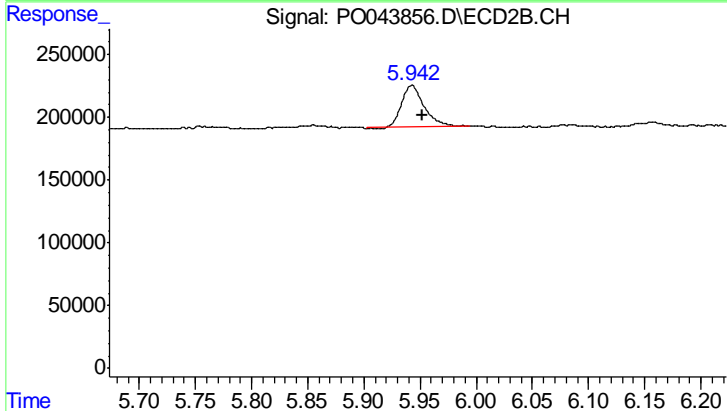
#28 AR-1254-3

R.T.: 5.630 min
 Delta R.T.: -0.012 min
 Response: -9957
 Conc: N.D.



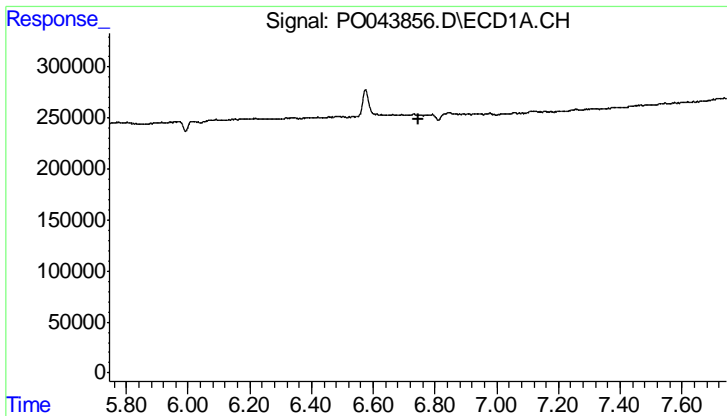
#32 AR-1260-2

R.T.: 0.000 min
 Exp R.T. : 6.996 min
 Response: 0
 Conc: N.D.



#32 AR-1260-2

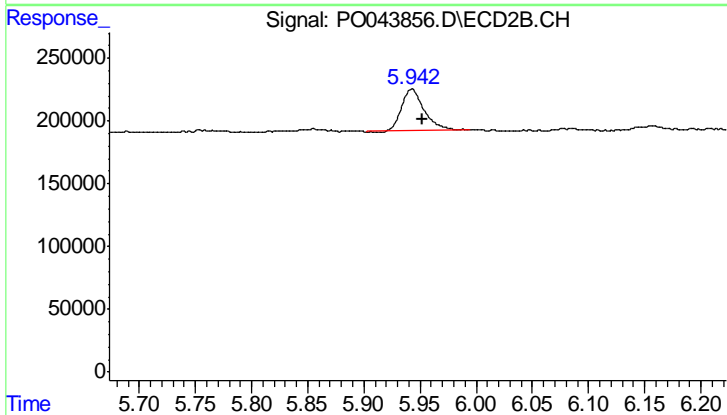
R.T.: 5.943 min
 Delta R.T.: -0.009 min
 Response: 469271
 Conc: 22.18 ng/ml



#36 AR-1262-1

R.T.: 0.000 min
 Exp R.T.: 6.745 min
 Response: 0
 Conc: N.D.

Instrument :
 ECD_O
 ClientSampleId :
 PB108107BL



#36 AR-1262-1

R.T.: 5.943 min
 Delta R.T.: -0.010 min
 Response: 469271
 Conc: 21.57 ng/ml