

Data Path : P:\HPCHEM1\ECD O\Data\PO041318\
 Data File : PO043853.D
 Signal(s) : Signal #1: ECD1A.CH Signal #2: ECD2B.CH
 Acq On : 13 Apr 2018 12:12
 Operator : SM/UA
 Sample : PB108086BS
 Misc :
 ALS Vial : 5 Sample Multiplier: 1

Instrument :
 ECD_O
ClientSampled :
 PB108086BS

Manual Integrations
APPROVED
 ugo
 4/17/2018 12:11:57 PM

Integration File signal 1: autoint1.e
 Integration File signal 2: autoint2.e
 Quant Time: Apr 13 13:33:40 2018
 Quant Method : P:\HPCHEM1\ECD_O\methods\PO040418.M
 Quant Title : GC EXTRACTABLES
 QLast Update : Wed Apr 04 15:17:57 2018
 Response via : Initial Calibration
 Integrator: ChemStation 6890 Scale Mode: Small noise peaks clipped

Volume Inj. : 2 µl
 Signal #1 Phase : ZB-MR1 Signal #2 Phase: ZB-MR2
 Signal #1 Info : 30Mx0.32mmx 0.50µ Signal #2 Info : 30M x 0.32mm x 0.25µm

Compound	RT#1	RT#2	Resp#1	Resp#2	ng/ml	ng/ml

System Monitoring Compounds						
1) SA Tetrachlo...	4.058	3.318	3813453	4923088	21.451	18.323
2) SA Decachlor...	9.390	8.074	4244908	5006844	23.556m	21.356m
Target Compounds						
3) L1 AR-1016-1	4.919	4.131	1151823	1474183	261.228	216.209m
4) L1 AR-1016-2	5.258	4.565	1672493	1427985	282.473	245.051
5) L1 AR-1016-3	5.352	4.603	1263326	1702903	261.730m	241.375
6) L1 AR-1016-4	5.771	4.766	1121713	1759131	199.917	227.870m
7) L1 AR-1016-5	6.001	5.101	993198	1525380	209.317m	204.836
31) L7 AR-1260-1	6.729	5.754	2572295	3912154	255.324	234.068
32) L7 AR-1260-2	6.979	5.941	3299568	5390052	257.169m	254.727
33) L7 AR-1260-3	7.331	6.256	2318137	5390603	229.276	244.800
34) L7 AR-1260-4	7.851	6.784	5008604	8431712	242.078m	228.256
35) L7 AR-1260-5	8.136	7.118	2879815	5319456	230.030	206.855

(f)=RT Delta > 1/2 Window (#)=Amounts differ by > 25% (m)=manual int.

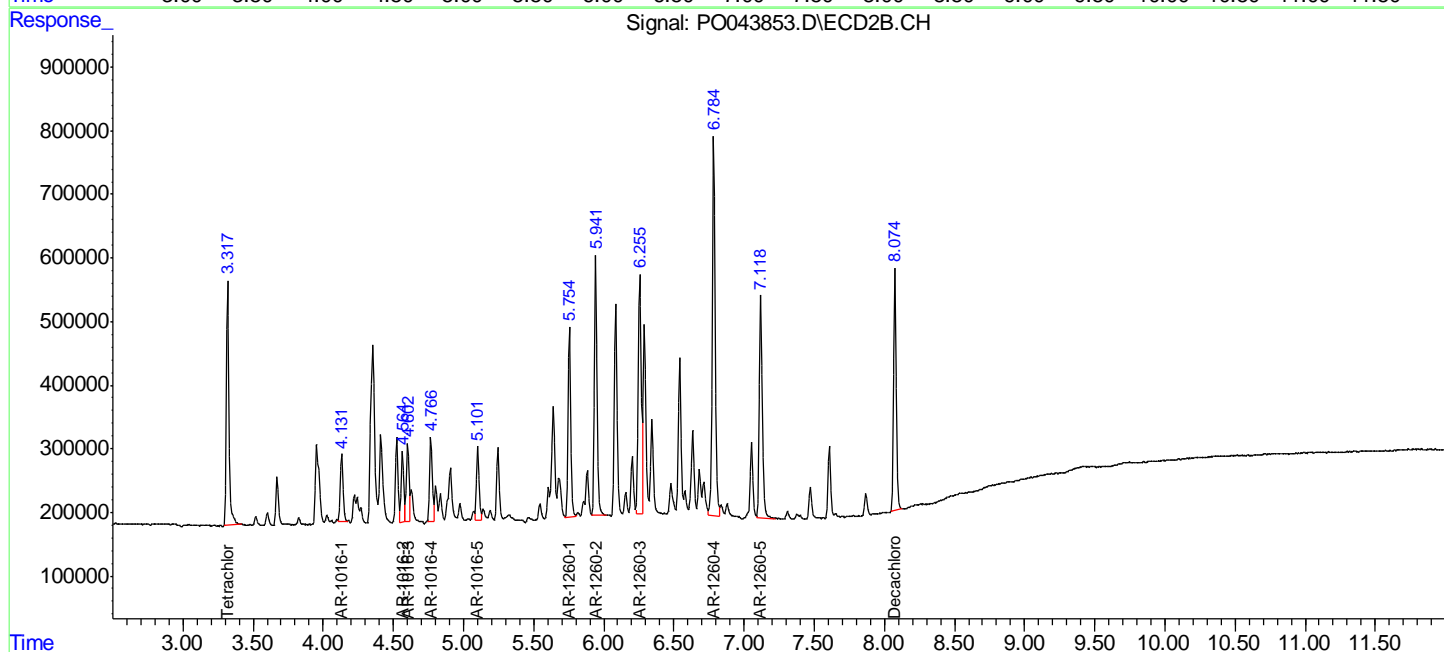
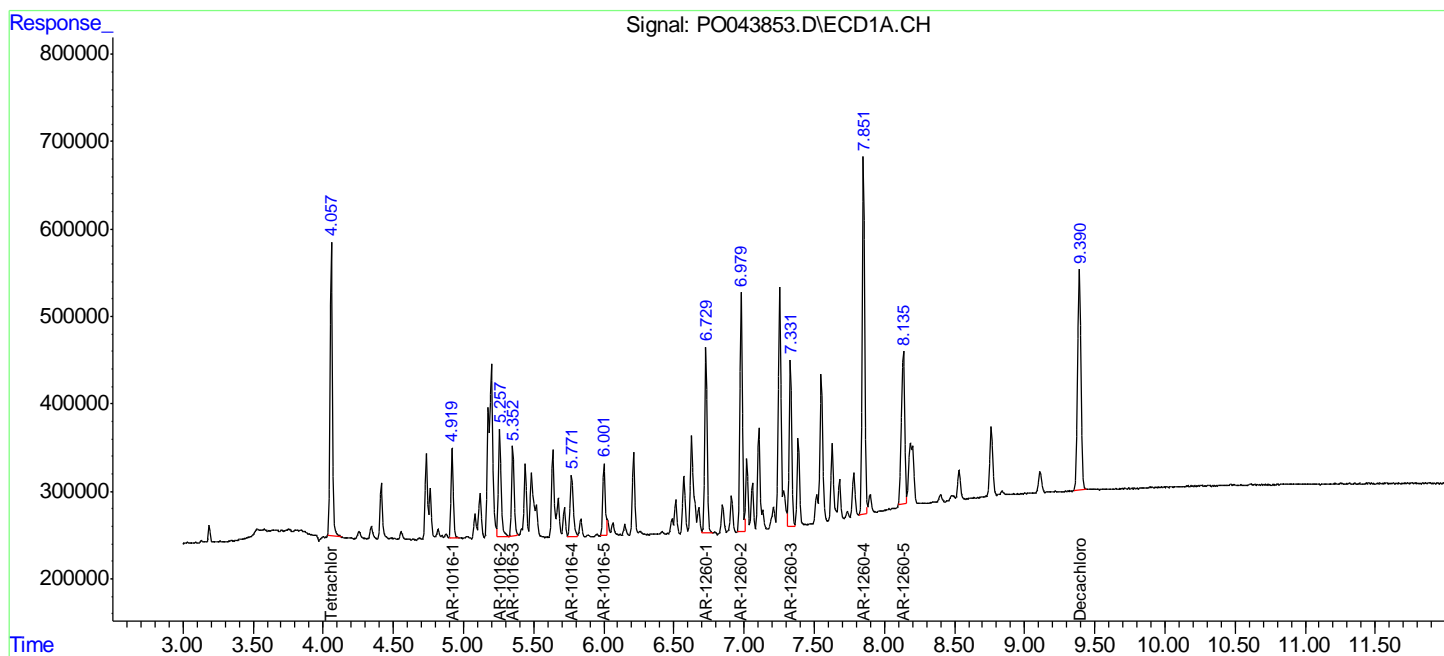
Data Path : P:\HPCHEM1\ECD O\Data\PO041318\
 Data File : PO043853.D
 Signal(s) : Signal #1: ECD1A.CH Signal #2: ECD2B.CH
 Acq On : 13 Apr 2018 12:12
 Operator : SM/UA
 Sample : PB108086BS
 Misc :
 ALS Vial : 5 Sample Multiplier: 1

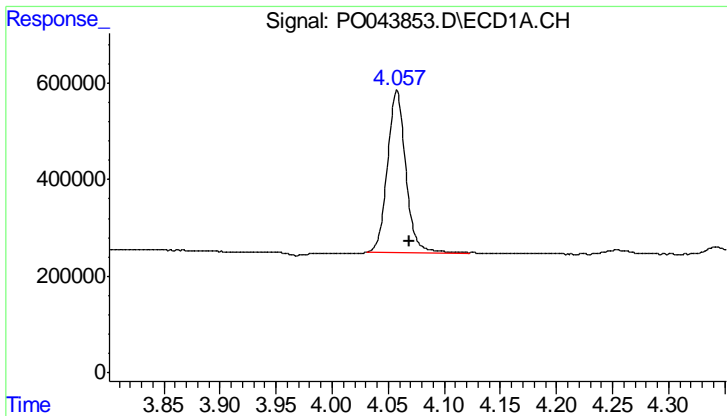
Instrument :
 ECD_O
 ClientSampled :
 PB108086BS

Manual Integrations
APPROVED
 ugo
 4/17/2018 12:11:57 PM

Integration File signal 1: autoint1.e
 Integration File signal 2: autoint2.e
 Quant Time: Apr 13 13:33:40 2018
 Quant Method : P:\HPCHEM1\ECD_O\methods\PO040418.M
 Quant Title : GC EXTRACTABLES
 QLast Update : Wed Apr 04 15:17:57 2018
 Response via : Initial Calibration
 Integrator: ChemStation 6890 Scale Mode: Small noise peaks clipped

Volume Inj. : 2 µl
 Signal #1 Phase : ZB-MR1 Signal #2 Phase: ZB-MR2
 Signal #1 Info : 30Mx0.32mmx 0.50µ Signal #2 Info : 30M x 0.32mm x 0.25µm



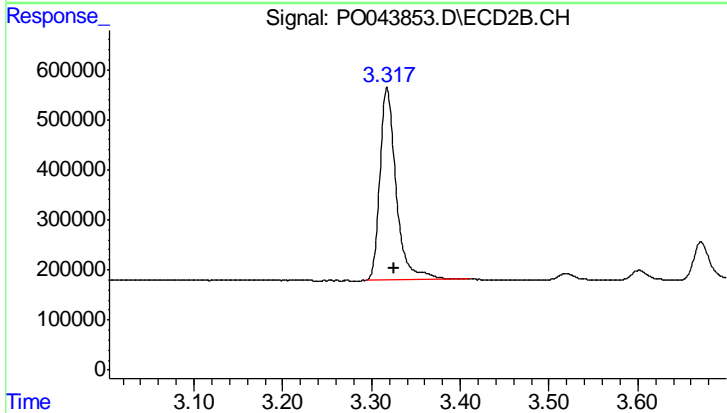


#1 Tetrachloro-m-xylene

R.T.: 4.058 min
 Delta R.T.: -0.012 min
 Response: 3813453
 Conc: 21.45 ng/ml

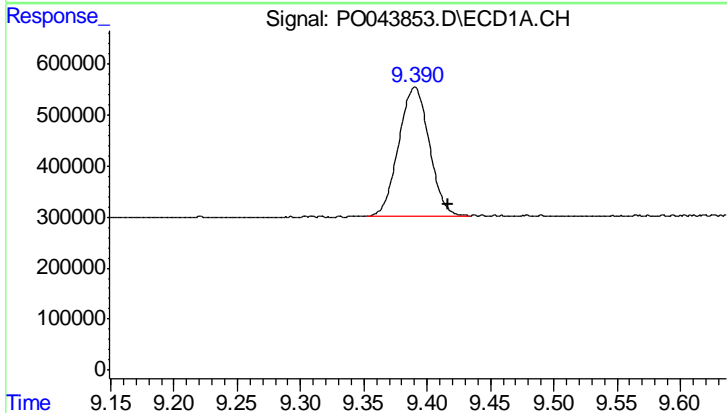
Instrument :
 ECD_O
 ClientSampled :
 PB108086BS

Manual Integrations
 APPROVED
 ugo
 4/17/2018 12:11:57 PM



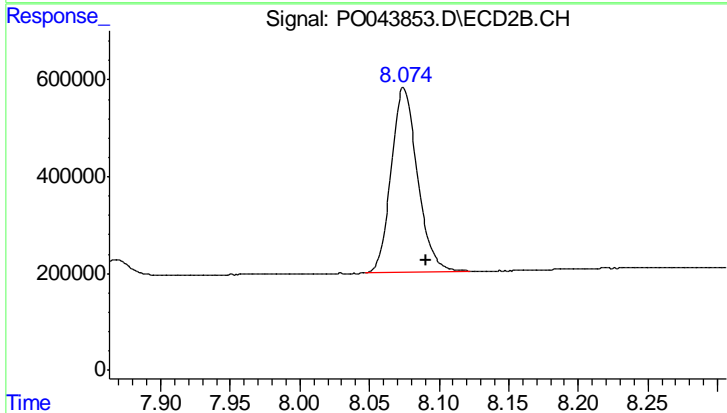
#1 Tetrachloro-m-xylene

R.T.: 3.318 min
 Delta R.T.: -0.009 min
 Response: 4923088
 Conc: 18.32 ng/ml



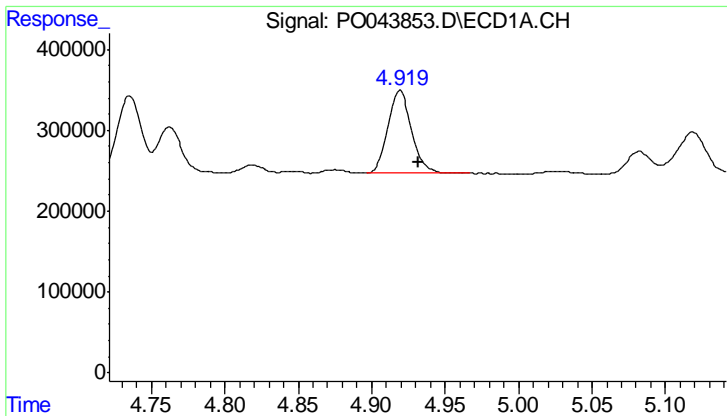
#2 Decachlorobiphenyl

R.T.: 9.390 min
 Delta R.T.: -0.027 min
 Response: 4244908
 Conc: 23.56 ng/ml m



#2 Decachlorobiphenyl

R.T.: 8.074 min
 Delta R.T.: -0.016 min
 Response: 5006844
 Conc: 21.36 ng/ml m



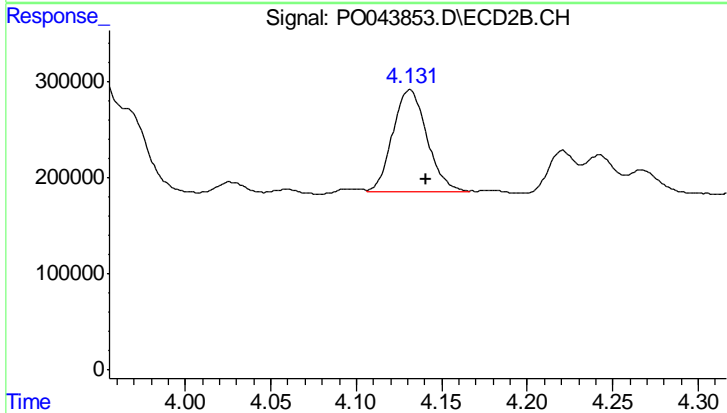
#3 AR-1016-1

R.T.: 4.919 min
 Delta R.T.: -0.013 min
 Response: 1151823
 Conc: 261.23 ng/ml

Instrument :
 ECD_O
 ClientSampled :
 PB108086BS

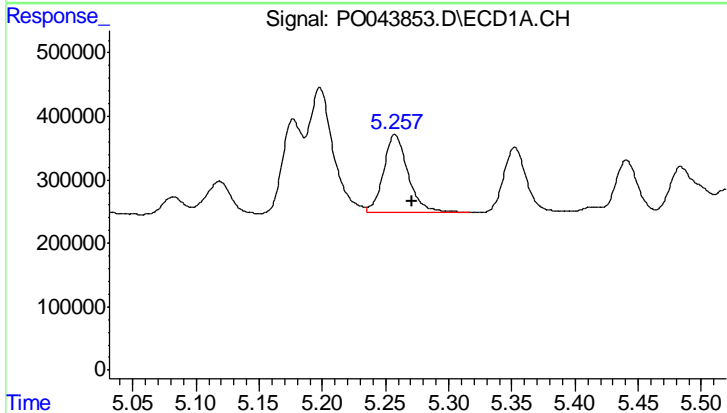
Manual Integrations
 APPROVED

ugo
 4/17/2018 12:11:57 PM



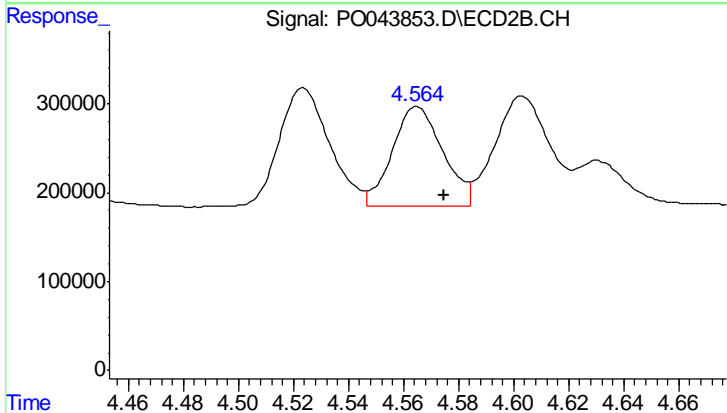
#3 AR-1016-1

R.T.: 4.131 min
 Delta R.T.: -0.010 min
 Response: 1474183
 Conc: 216.21 ng/ml m



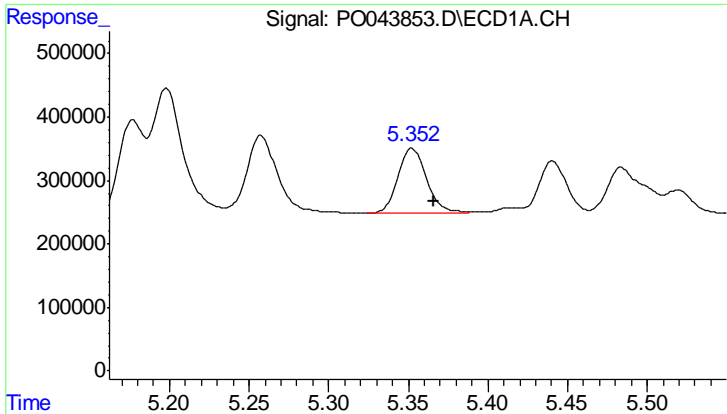
#4 AR-1016-2

R.T.: 5.258 min
 Delta R.T.: -0.013 min
 Response: 1672493
 Conc: 282.47 ng/ml



#4 AR-1016-2

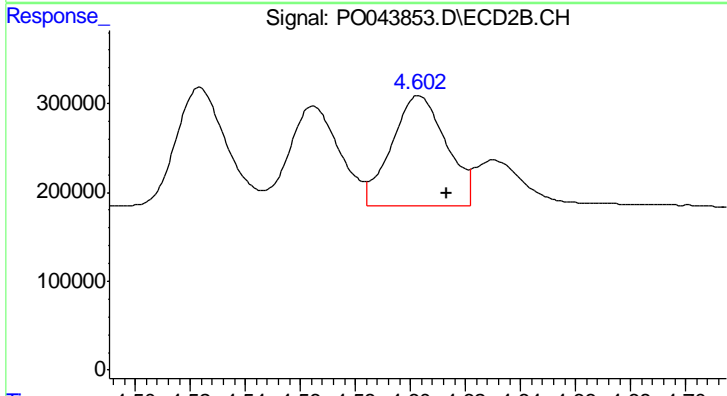
R.T.: 4.565 min
 Delta R.T.: -0.010 min
 Response: 1427985
 Conc: 245.05 ng/ml



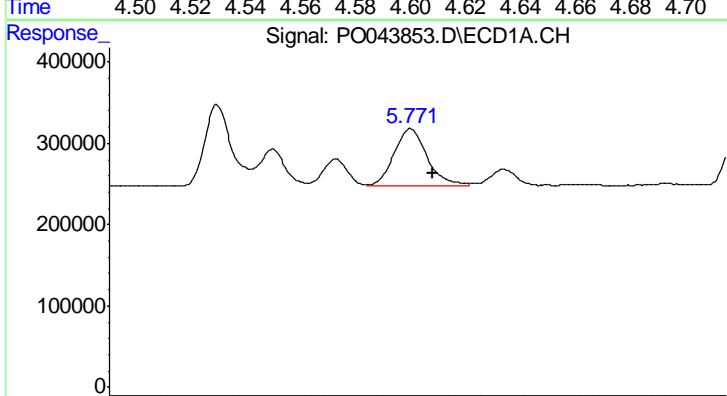
#5 AR-1016-3
 R.T.: 5.352 min
 Delta R.T.: -0.014 min
 Response: 1263326
 Conc: 261.73 ng/ml

Instrument :
 ECD_O
ClientSampled :
 PB108086BS

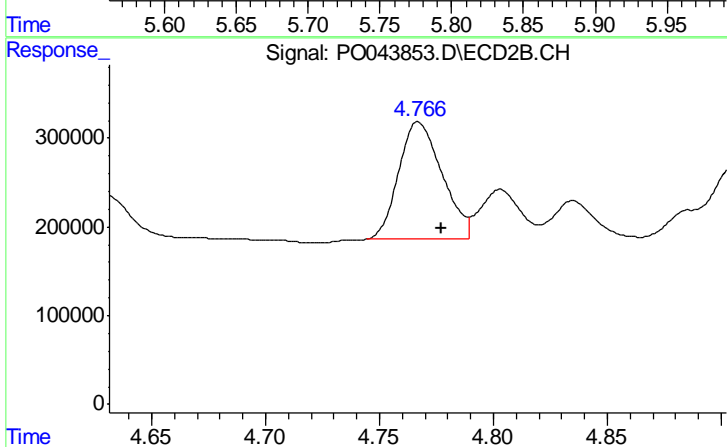
Manual Integrations
APPROVED
 ugo
 4/17/2018 12:11:57 PM



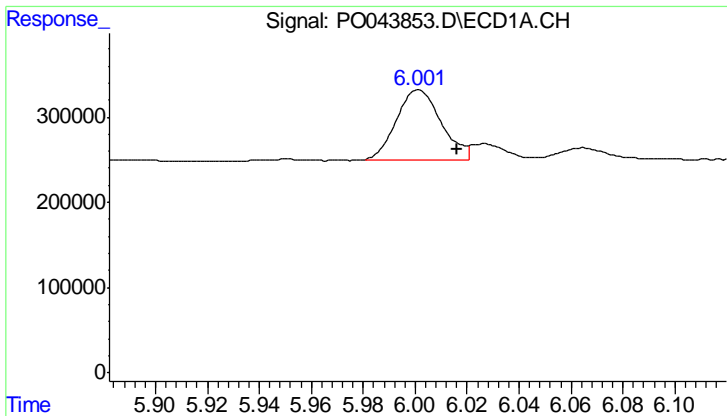
#5 AR-1016-3
 R.T.: 4.603 min
 Delta R.T.: -0.010 min
 Response: 1702903
 Conc: 241.38 ng/ml



#6 AR-1016-4
 R.T.: 5.771 min
 Delta R.T.: -0.015 min
 Response: 1121713
 Conc: 199.92 ng/ml



#6 AR-1016-4
 R.T.: 4.766 min
 Delta R.T.: -0.011 min
 Response: 1759131
 Conc: 227.87 ng/ml m



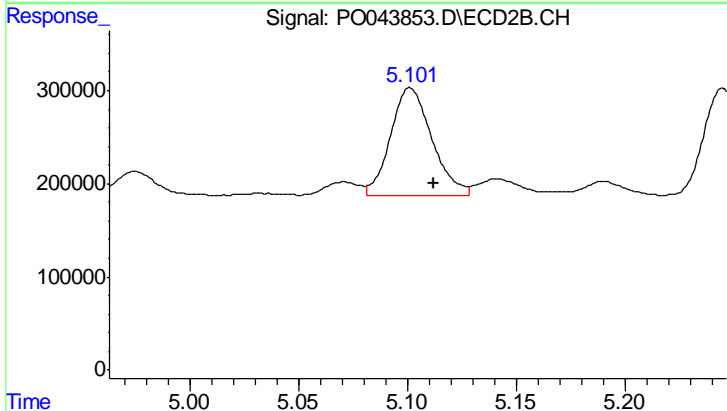
#7 AR-1016-5

R.T.: 6.001 min
 Delta R.T.: -0.015 min
 Response: 993198
 Conc: 209.32 ng/ml

Instrument :
 ECD_O
 ClientSampled :
 PB108086BS

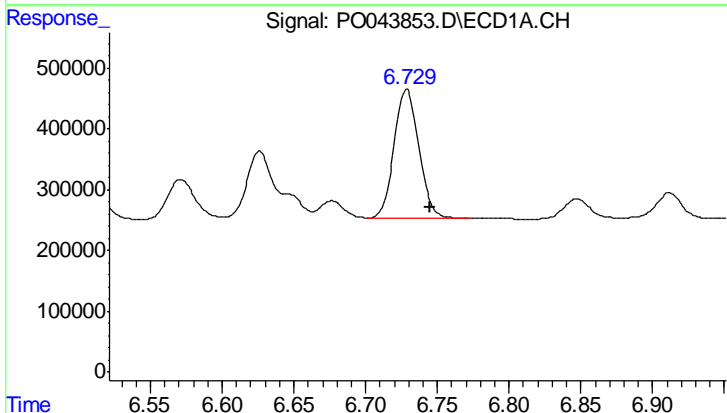
Manual Integrations
 APPROVED

ugo
 4/17/2018 12:11:57 PM



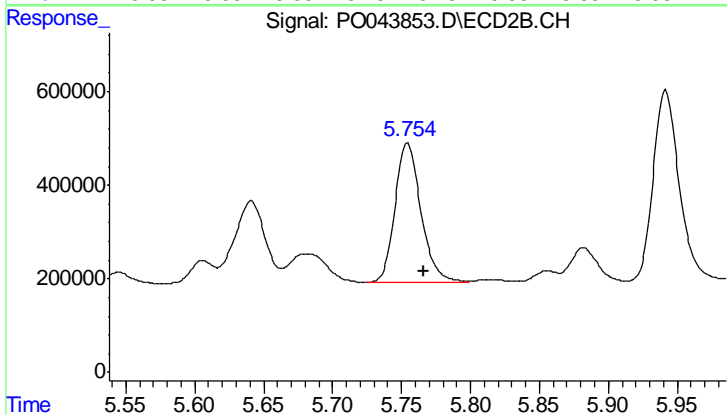
#7 AR-1016-5

R.T.: 5.101 min
 Delta R.T.: -0.011 min
 Response: 1525380
 Conc: 204.84 ng/ml



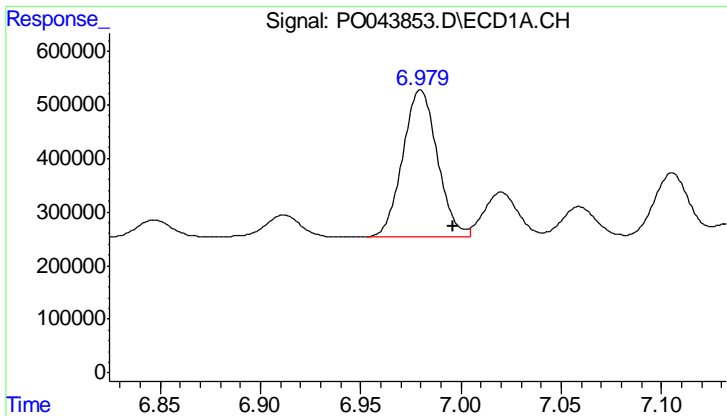
#31 AR-1260-1

R.T.: 6.729 min
 Delta R.T.: -0.016 min
 Response: 2572295
 Conc: 255.32 ng/ml



#31 AR-1260-1

R.T.: 5.754 min
 Delta R.T.: -0.012 min
 Response: 3912154
 Conc: 234.07 ng/ml



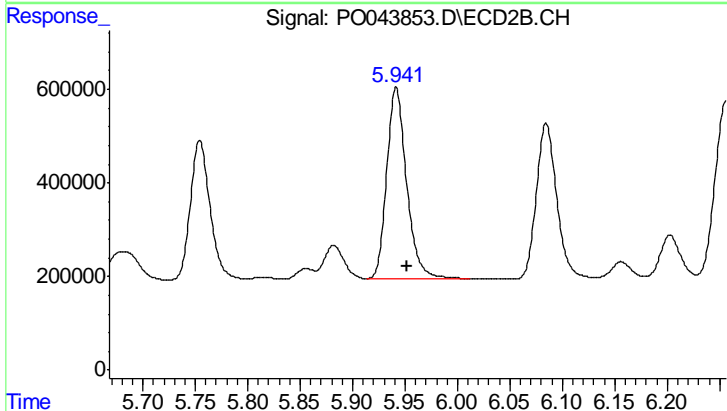
#32 AR-1260-2

R.T.: 6.979 min
 Delta R.T.: -0.016 min
 Response: 3299568
 Conc: 257.17 ng/ml

Instrument :
 ECD_O
 ClientSampled :
 PB108086BS

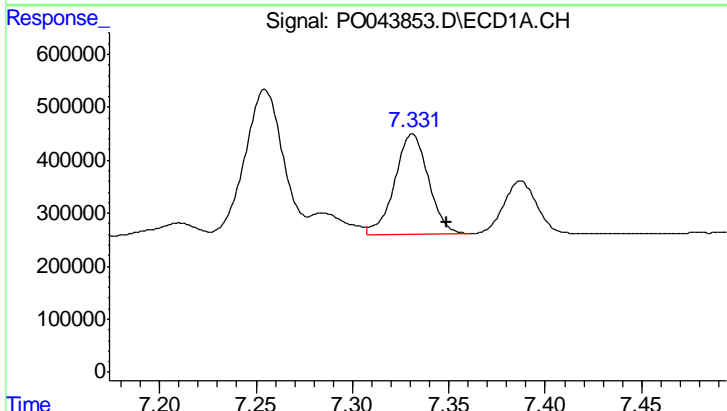
Manual Integrations
 APPROVED

ugo
 4/17/2018 12:11:57 PM



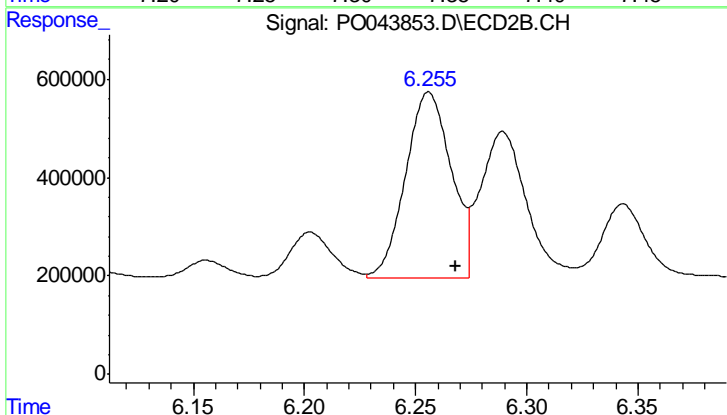
#32 AR-1260-2

R.T.: 5.941 min
 Delta R.T.: -0.011 min
 Response: 5390052
 Conc: 254.73 ng/ml



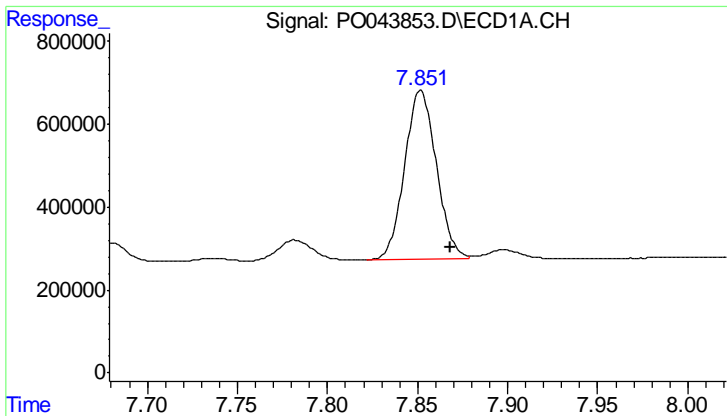
#33 AR-1260-3

R.T.: 7.331 min
 Delta R.T.: -0.018 min
 Response: 2318137
 Conc: 229.28 ng/ml



#33 AR-1260-3

R.T.: 6.256 min
 Delta R.T.: -0.012 min
 Response: 5390603
 Conc: 244.80 ng/ml



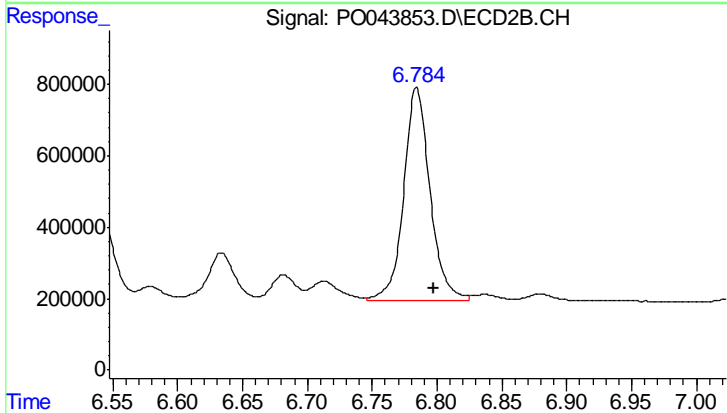
#34 AR-1260-4

R.T.: 7.851 min
 Delta R.T.: -0.017 min
 Response: 5008604
 Conc: 242.08 ng/ml

Instrument :
 ECD_O
 ClientSampled :
 PB108086BS

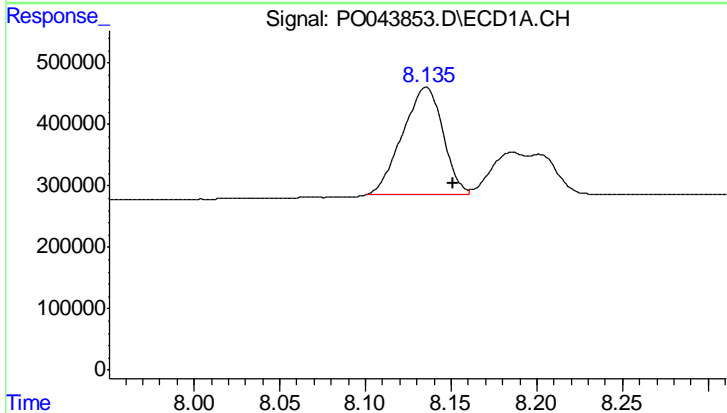
Manual Integrations
 APPROVED

ugo
 4/17/2018 12:11:57 PM



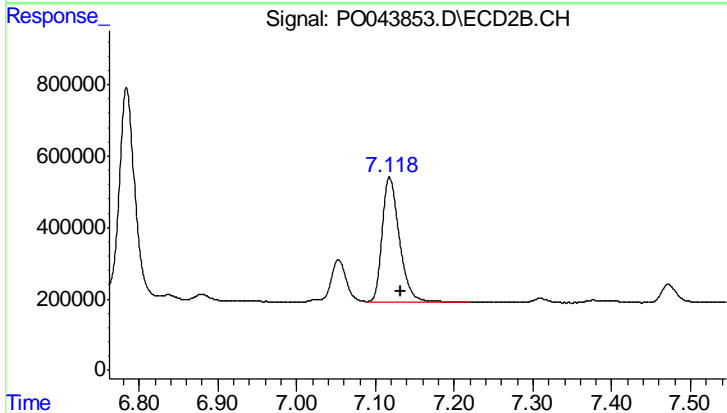
#34 AR-1260-4

R.T.: 6.784 min
 Delta R.T.: -0.013 min
 Response: 8431712
 Conc: 228.26 ng/ml



#35 AR-1260-5

R.T.: 8.136 min
 Delta R.T.: -0.016 min
 Response: 2879815
 Conc: 230.03 ng/ml



#35 AR-1260-5

R.T.: 7.118 min
 Delta R.T.: -0.014 min
 Response: 5319456
 Conc: 206.86 ng/ml