

Data Path : Z:\pestpcbsrv\HPCHEM1\ECD_0\Data\P0041320\
 Data File : P0067806.D
 Signal(s) : Signal #1: ECD1A.CH Signal #2: ECD2B.CH
 Acq On : 13 Apr 2020 8:32
 Operator : DD\AJ
 Sample : I.BLK
 Misc :
 ALS Vial : 2 Sample Multiplier: 1

Instrument :
 ECD_0
ClientSampled :
 I.BLK

Manual Integrations
APPROVED
 Sohil
 4/14/2020 2:59:44 PM

Integration File signal 1: autoint1.e
 Integration File signal 2: autoint2.e
 Quant Time: Apr 13 11:25:14 2020
 Quant Method : Z:\pestpcbsrv\HPCHEM1\ECD_0\methods\P0040120.M
 Quant Title : GC EXTRACTABLES
 QLast Update : Fri Apr 03 16:04:09 2020
 Response via : Initial Calibration
 Integrator: ChemStation 6890 Scale Mode: Small noise peaks clipped

Volume Inj. : 2 µl
 Signal #1 Phase : ZB-MR1 Signal #2 Phase: ZB-MR2
 Signal #1 Info : 30Mx0.32mmx 0.50µ Signal #2 Info : 30M x 0.32mm x 0.25µm

Compound	RT#1	RT#2	Resp#1	Resp#2	ng/ml	ng/ml

System Monitoring Compounds						
1) SA Tetrachlo...	4.926	3.940	618728	799221	25.982m	23.845
2) SA Decachlor...	10.904	9.224	749304	874928	22.010m	21.161

Target Compounds

 (f)=RT Delta > 1/2 Window (#)=Amounts differ by > 25% (m)=manual int.

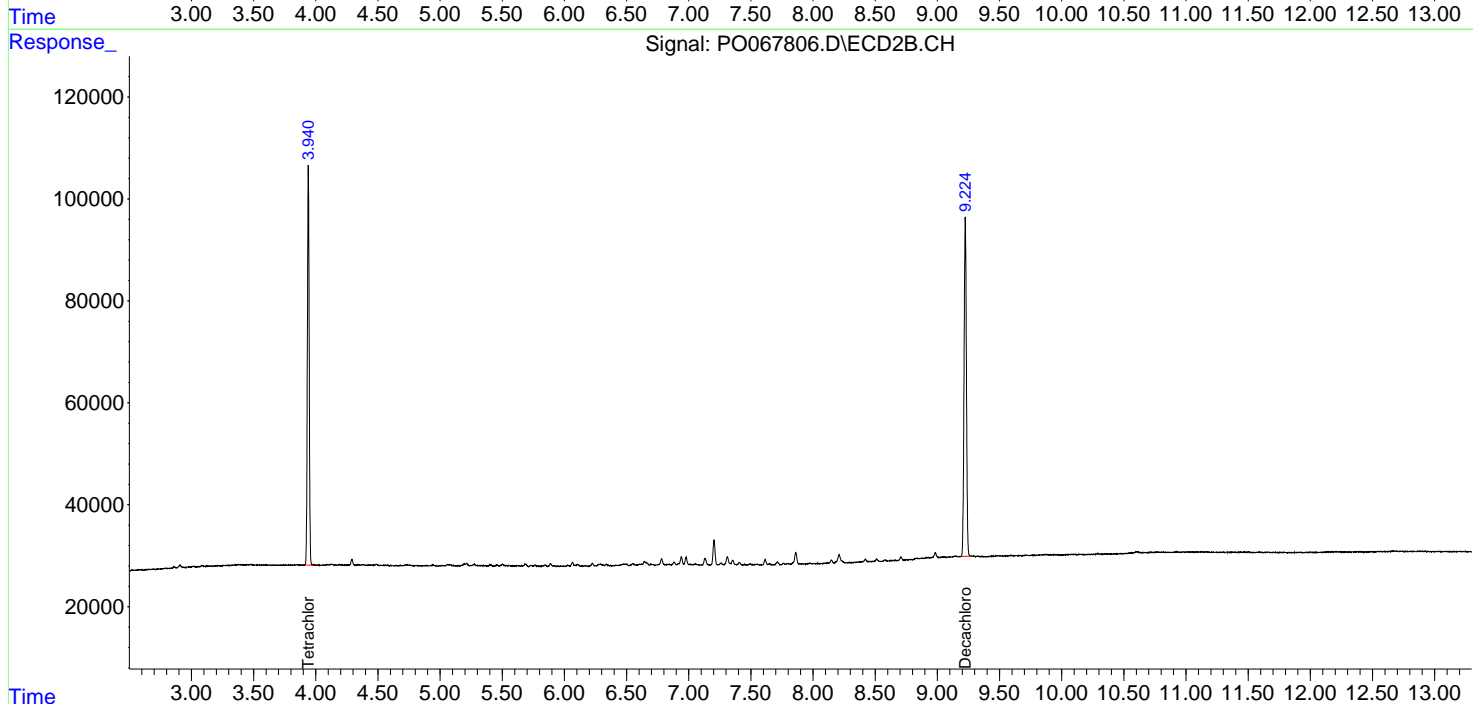
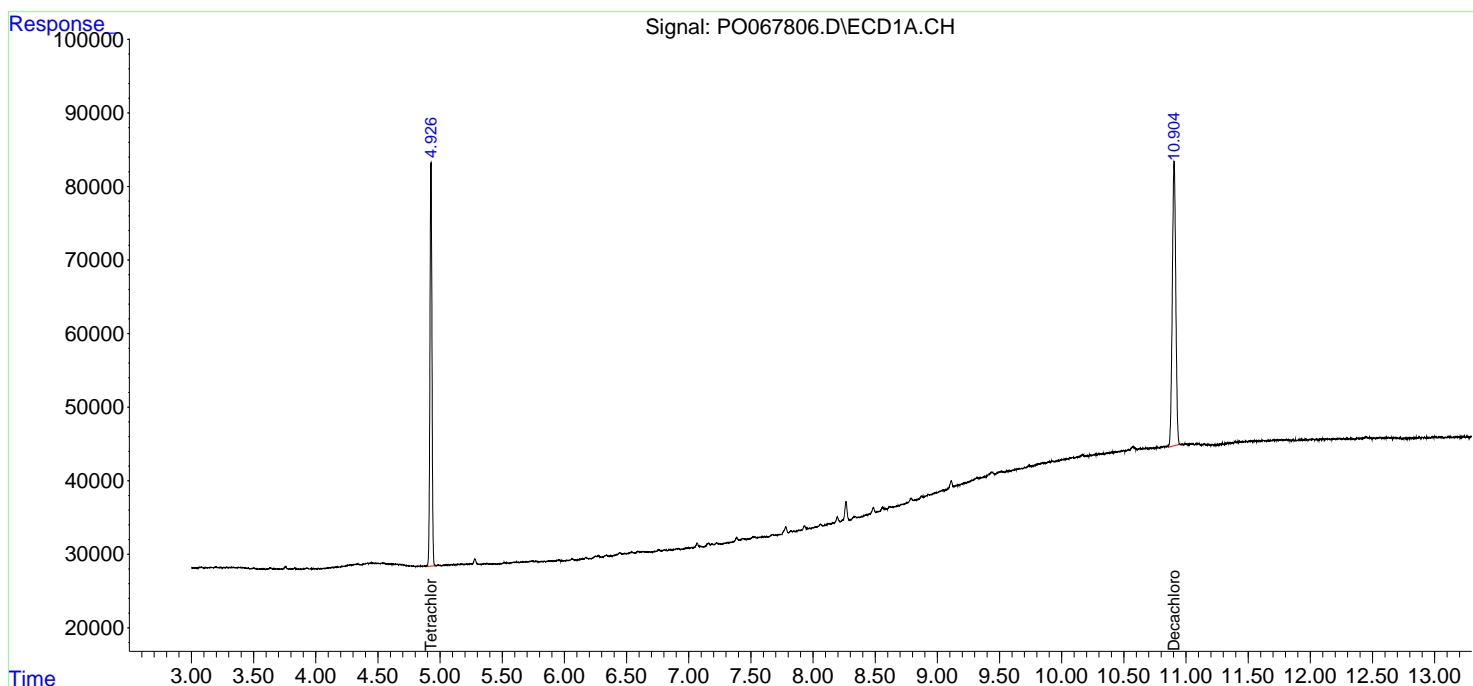
Data Path : Z:\pestpcbsrv\HPCHEM1\ECD_0\Data\P0041320\
 Data File : P0067806.D
 Signal(s) : Signal #1: ECD1A.CH Signal #2: ECD2B.CH
 Acq On : 13 Apr 2020 8:32
 Operator : DD\AJ
 Sample : I.BLK
 Misc :
 ALS Vial : 2 Sample Multiplier: 1

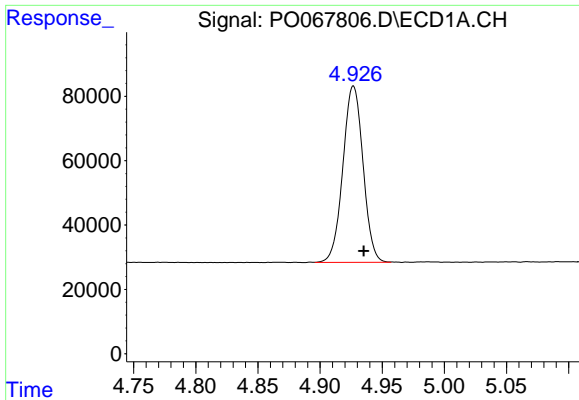
Instrument :
 ECD_O
ClientSampled :
 I.BLK

Manual Integrations
APPROVED
 Sohil
 4/14/2020 2:59:44 PM

Integration File signal 1: autoint1.e
 Integration File signal 2: autoint2.e
 Quant Time: Apr 13 11:25:14 2020
 Quant Method : Z:\pestpcbsrv\HPCHEM1\ECD_0\methods\P0040120.M
 Quant Title : GC EXTRACTABLES
 QLast Update : Fri Apr 03 16:04:09 2020
 Response via : Initial Calibration
 Integrator: ChemStation 6890 Scale Mode: Small noise peaks clipped

Volume Inj. : 2 µl
 Signal #1 Phase : ZB-MR1 Signal #2 Phase: ZB-MR2
 Signal #1 Info : 30Mx0.32mmx 0.50µ Signal #2 Info : 30M x 0.32mm x 0.25µm

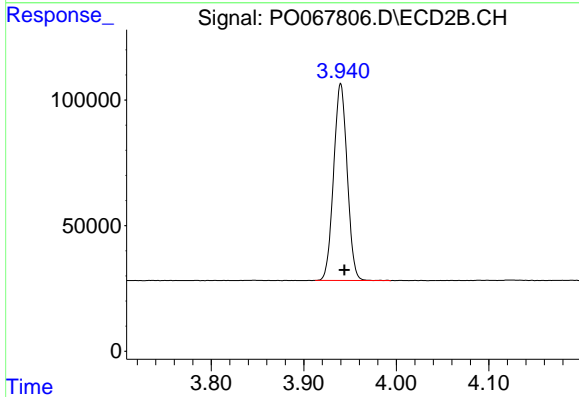




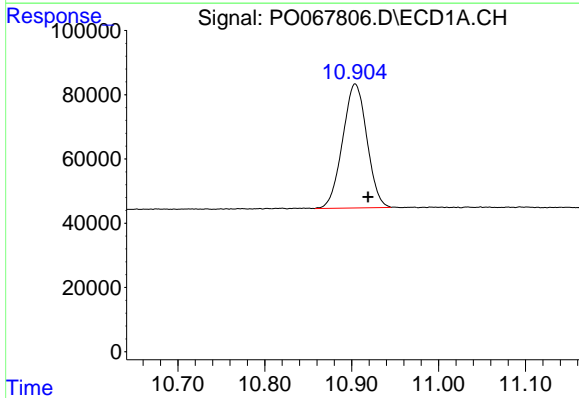
#1 Tetrachloro-m-xylene
 R.T.: 4.926 min
 Delta R.T.: -0.009 min
 Response: 618728
 Conc: 25.98 ng/ml m

Instrument :
 ECD_O
 ClientSampled :
 I.BLK

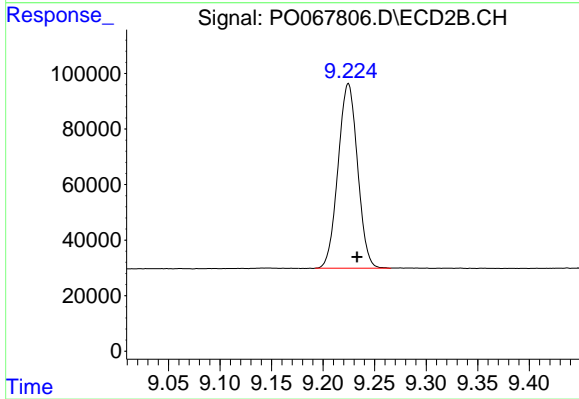
Manual Integrations
 APPROVED
 Sohil
 4/14/2020 2:59:44 PM



#1 Tetrachloro-m-xylene
 R.T.: 3.940 min
 Delta R.T.: -0.004 min
 Response: 799221
 Conc: 23.85 ng/ml



#2 Decachlorobiphenyl
 R.T.: 10.904 min
 Delta R.T.: -0.015 min
 Response: 749304
 Conc: 22.01 ng/ml m



#2 Decachlorobiphenyl
 R.T.: 9.224 min
 Delta R.T.: -0.009 min
 Response: 874928
 Conc: 21.16 ng/ml