

Data Path : Z:\pestpcbsrv\HPCHEM1\ECD_0\Data\P0041320\
 Data File : P0067816.D
 Signal(s) : Signal #1: ECD1A.CH Signal #2: ECD2B.CH
 Acq On : 13 Apr 2020 15:00
 Operator : DD\AJ
 Sample : PB128140BS
 Misc :
 ALS Vial : 12 Sample Multiplier: 1

Instrument :
 ECD_0
ClientSampled :
 PB128140BS

Manual Integrations
APPROVED
 Sohil
 4/14/2020 5:01:08 PM

Integration File signal 1: autoint1.e
 Integration File signal 2: autoint2.e
 Quant Time: Apr 13 15:36:18 2020
 Quant Method : Z:\pestpcbsrv\HPCHEM1\ECD_0\methods\P0040120.M
 Quant Title : GC EXTRACTABLES
 QLast Update : Fri Apr 03 16:04:09 2020
 Response via : Initial Calibration
 Integrator: ChemStation 6890 Scale Mode: Small noise peaks clipped

Volume Inj. : 2 µl
 Signal #1 Phase : ZB-MR2 Signal #2 Phase: ZB-MR2
 Signal #1 Info : 30Mx0.32mmx 0.50µ Signal #2 Info : 30M x 0.32mm x 0.25µm

Compound	RT#1	RT#2	Resp#1	Resp#2	ng/ml	ng/ml

System Monitoring Compounds						
1) SA Tetrachlo...	4.929	3.941	562375	710793	23.615	21.207
2) SA Decachlor...	10.911	9.228	714502	828002	20.988	20.026
Target Compounds						
3) L1 AR-1016-1	6.250	5.196	246797	309980	239.322	211.457
4) L1 AR-1016-2	6.274	5.216	337821	414642	239.430	211.663
5) L1 AR-1016-3	6.340	5.406	204601	227360	232.770	217.389
6) L1 AR-1016-4	6.447	5.459	160663	182782	227.834	204.894
7) L1 AR-1016-5	6.761	5.687	163423	230944	227.280	204.084
31) L7 AR-1260-1	7.934	6.784	325318	466432	240.721	222.488
32) L7 AR-1260-2	8.199	6.981	396264	571222	234.729	222.461
33) L7 AR-1260-3	8.563	7.134	255588	528882	196.081	219.939m
34) L7 AR-1260-4	8.792	7.618	304107	403312	197.883	191.898
35) L7 AR-1260-5	9.115	7.865	594388	943513	188.418	186.372

(f)=RT Delta > 1/2 Window (#)=Amounts differ by > 25% (m)=manual int.

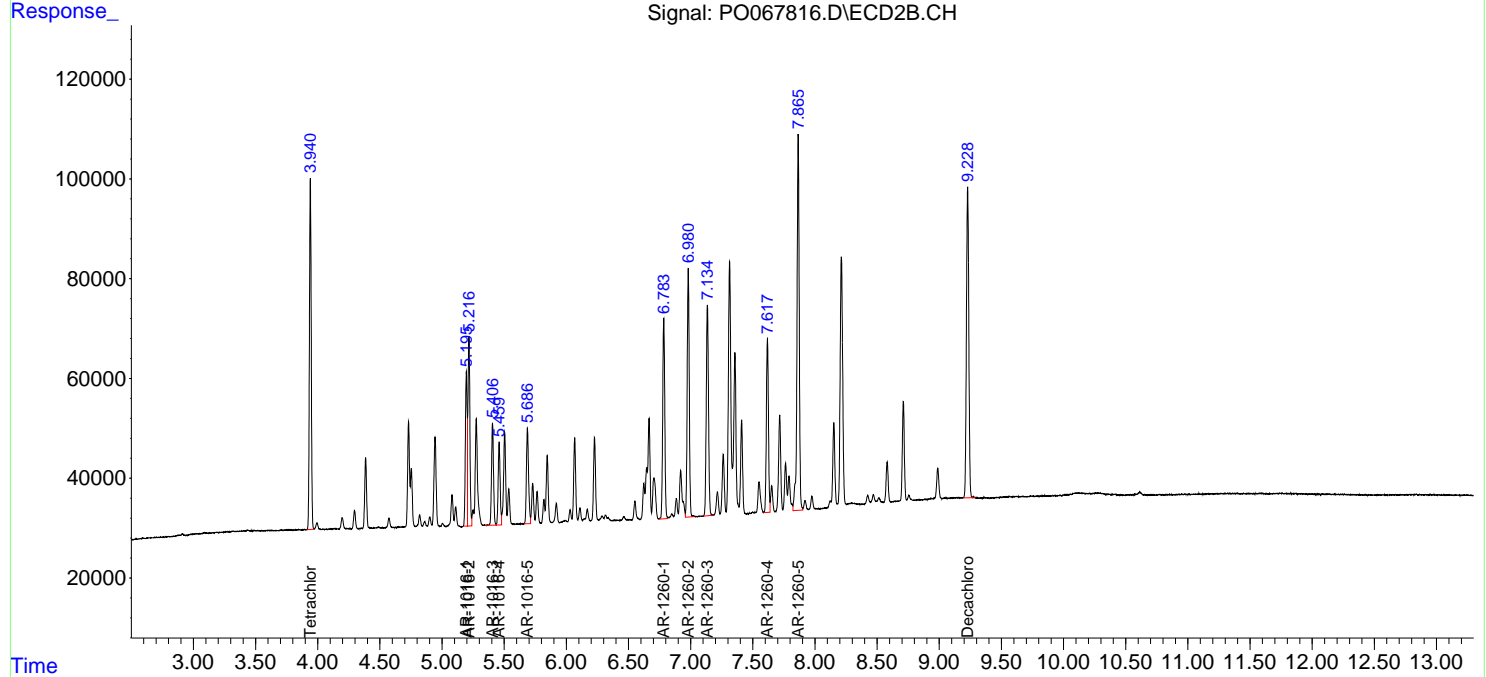
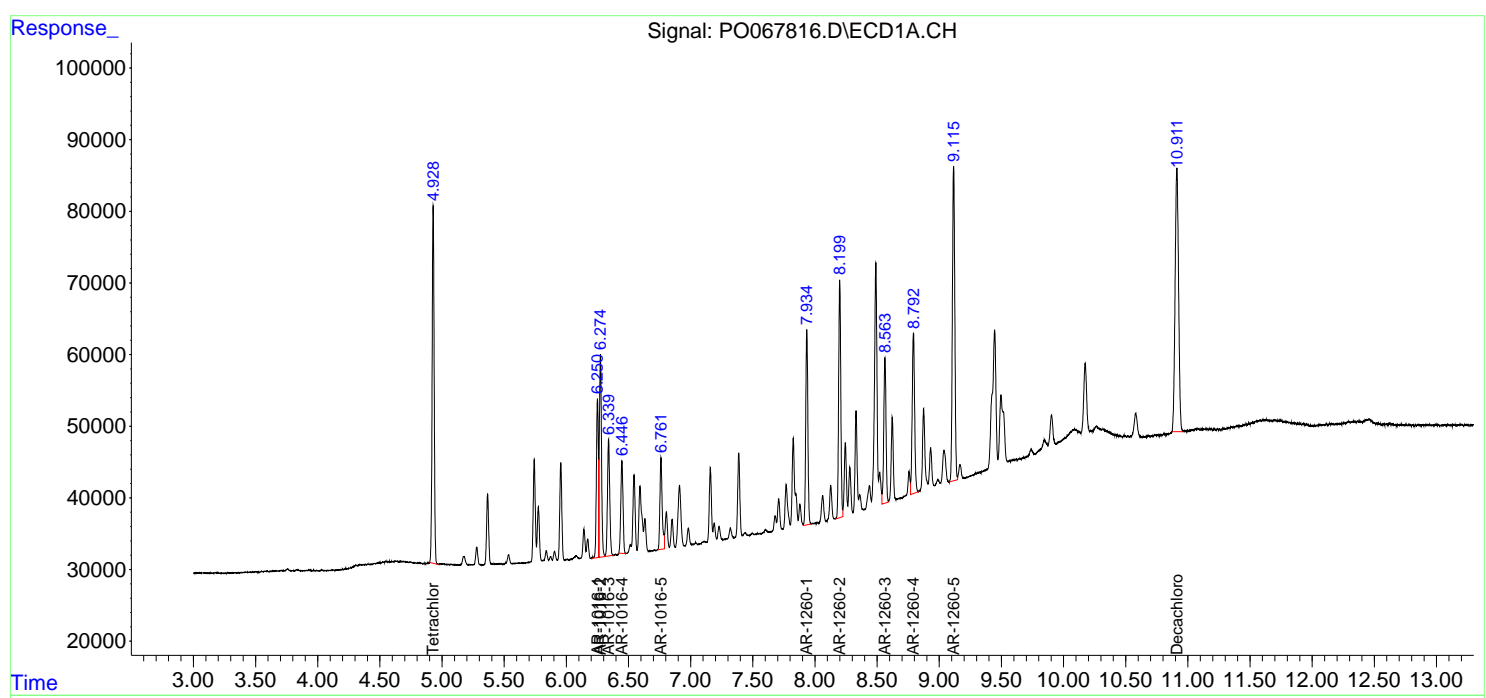
Data Path : Z:\pestpcbsrv\HPCHEM1\ECD_O\Data\PO041320\
 Data File : PO067816.D
 Signal(s) : Signal #1: ECD1A.CH Signal #2: ECD2B.CH
 Acq On : 13 Apr 2020 15:00
 Operator : DD\AJ
 Sample : PB128140BS
 Misc :
 ALS Vial : 12 Sample Multiplier: 1

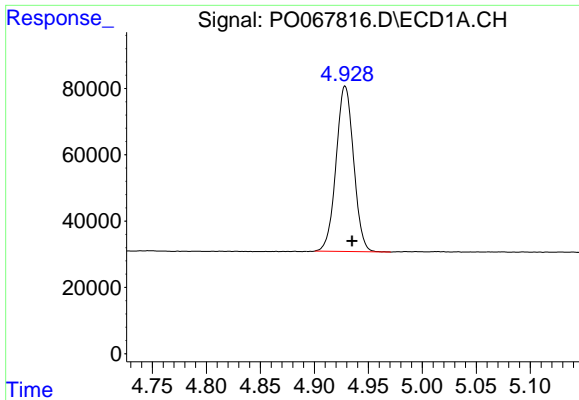
Instrument :
 ECD_O
Client Sampled :
 PB128140BS

Manual Integrations
APPROVED
 Sohil
 4/14/2020 5:01:08 PM

Integration File signal 1: autoint1.e
 Integration File signal 2: autoint2.e
 Quant Time: Apr 13 15:36:18 2020
 Quant Method : Z:\pestpcbsrv\HPCHEM1\ECD_O\methods\PO040120.M
 Quant Title : GC EXTRACTABLES
 QLast Update : Fri Apr 03 16:04:09 2020
 Response via : Initial Calibration
 Integrator: ChemStation 6890 Scale Mode: Small noise peaks clipped

Volume Inj. : 2 µl
 Signal #1 Phase : ZB-MR1 Signal #2 Phase: ZB-MR2
 Signal #1 Info : 30Mx0.32mmx 0.50µ Signal #2 Info : 30M x 0.32mm x 0.25µm

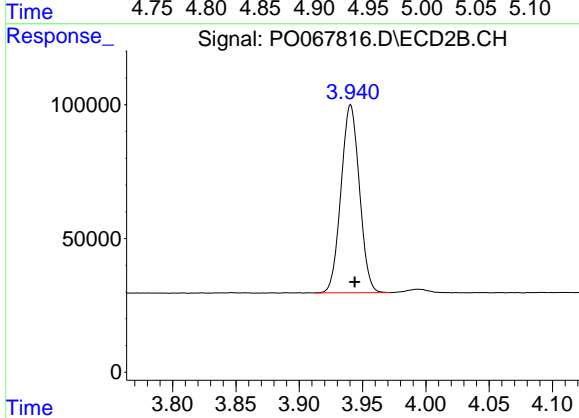




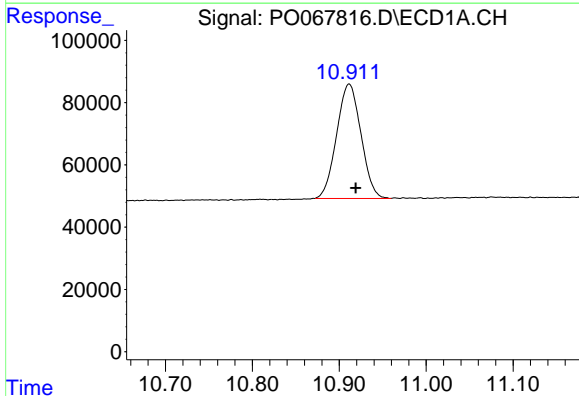
#1 Tetrachloro-m-xylene
 R.T.: 4.929 min
 Delta R.T.: -0.006 min
 Response: 562375
 Conc: 23.62 ng/ml

Instrument :
 ECD_O
ClientSampled :
 PB128140BS

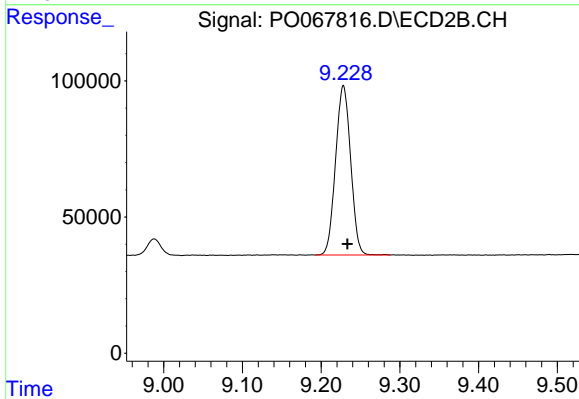
Manual Integrations
APPROVED
 Sohil
 4/14/2020 5:01:08 PM



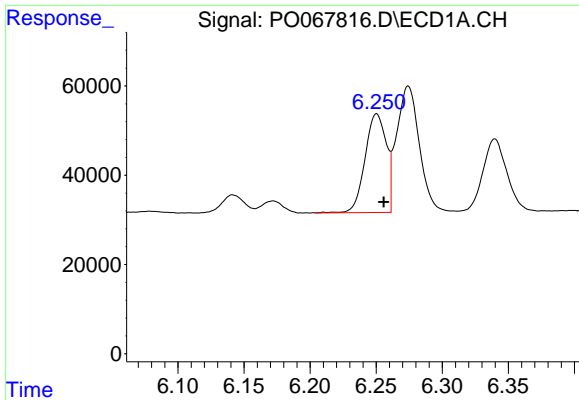
#1 Tetrachloro-m-xylene
 R.T.: 3.941 min
 Delta R.T.: -0.003 min
 Response: 710793
 Conc: 21.21 ng/ml



#2 Decachlorobiphenyl
 R.T.: 10.911 min
 Delta R.T.: -0.007 min
 Response: 714502
 Conc: 20.99 ng/ml



#2 Decachlorobiphenyl
 R.T.: 9.228 min
 Delta R.T.: -0.005 min
 Response: 828002
 Conc: 20.03 ng/ml

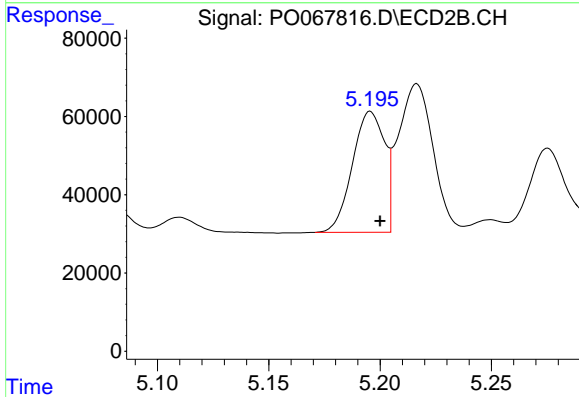


#3 AR-1016-1

R.T.: 6.250 min
 Delta R.T.: -0.005 min
 Response: 246797
 Conc: 239.32 ng/ml

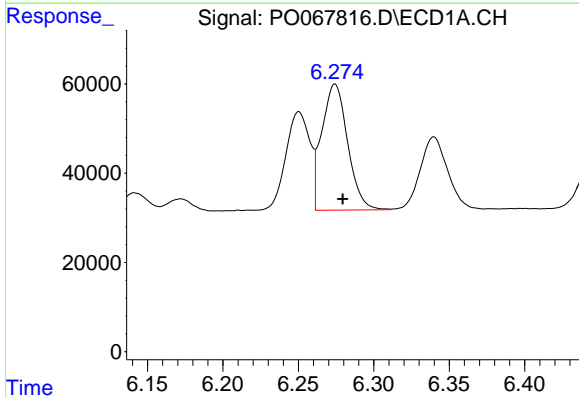
Instrument :
 ECD_O
 ClientSampled :
 PB128140BS

Manual Integrations
 APPROVED
 Sohil
 4/14/2020 5:01:08 PM



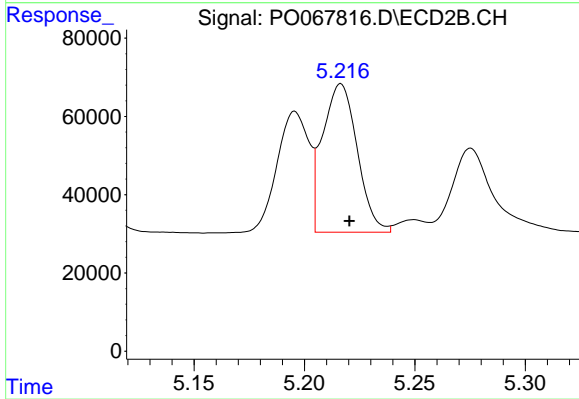
#3 AR-1016-1

R.T.: 5.196 min
 Delta R.T.: -0.004 min
 Response: 309980
 Conc: 211.46 ng/ml



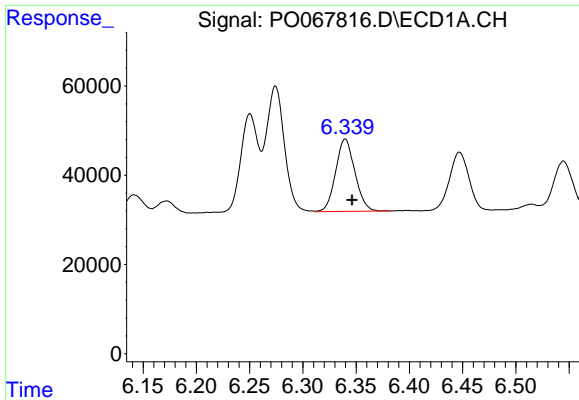
#4 AR-1016-2

R.T.: 6.274 min
 Delta R.T.: -0.005 min
 Response: 337821
 Conc: 239.43 ng/ml



#4 AR-1016-2

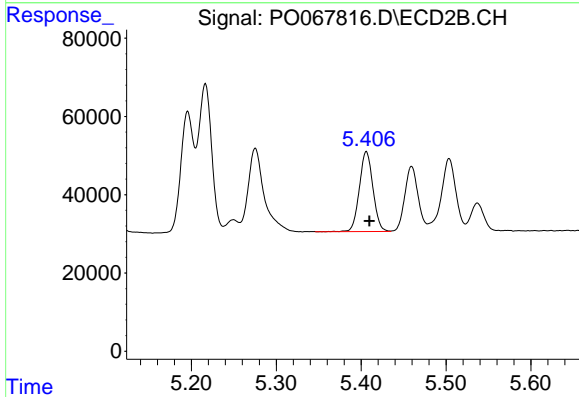
R.T.: 5.216 min
 Delta R.T.: -0.004 min
 Response: 414642
 Conc: 211.66 ng/ml



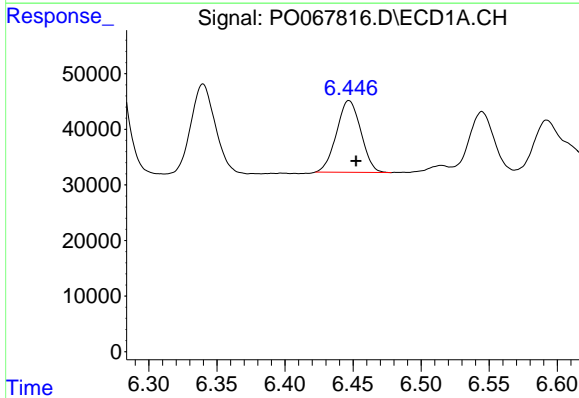
#5 AR-1016-3
 R.T.: 6.340 min
 Delta R.T.: -0.006 min
 Response: 204601
 Conc: 232.77 ng/ml

Instrument :
 ECD_O
ClientSampled :
 PB128140BS

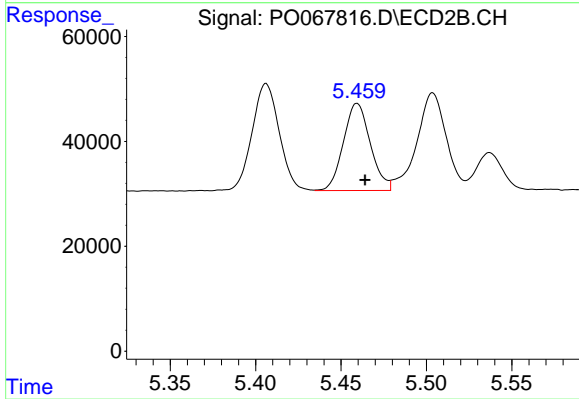
Manual Integrations
APPROVED
 Sohil
 4/14/2020 5:01:08 PM



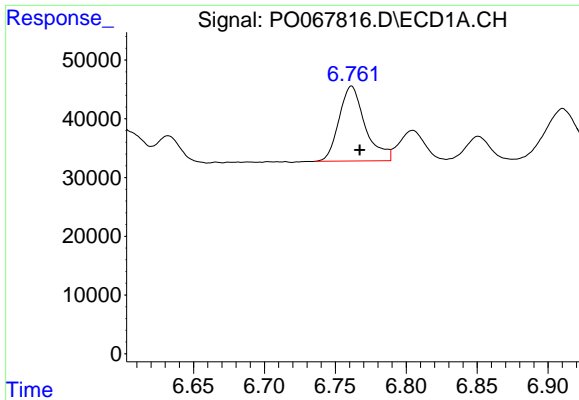
#5 AR-1016-3
 R.T.: 5.406 min
 Delta R.T.: -0.004 min
 Response: 227360
 Conc: 217.39 ng/ml



#6 AR-1016-4
 R.T.: 6.447 min
 Delta R.T.: -0.005 min
 Response: 160663
 Conc: 227.83 ng/ml



#6 AR-1016-4
 R.T.: 5.459 min
 Delta R.T.: -0.005 min
 Response: 182782
 Conc: 204.89 ng/ml

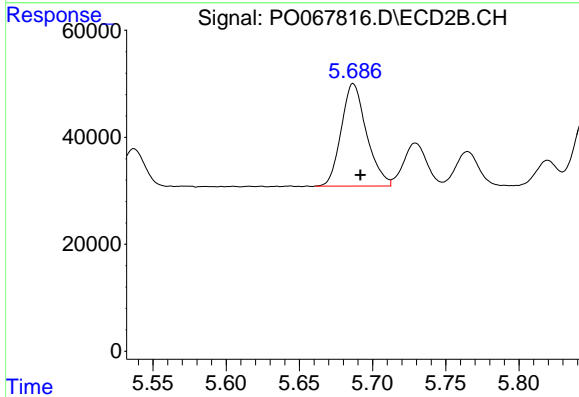


#7 AR-1016-5

R.T.: 6.761 min
 Delta R.T.: -0.006 min
 Response: 163423
 Conc: 227.28 ng/ml

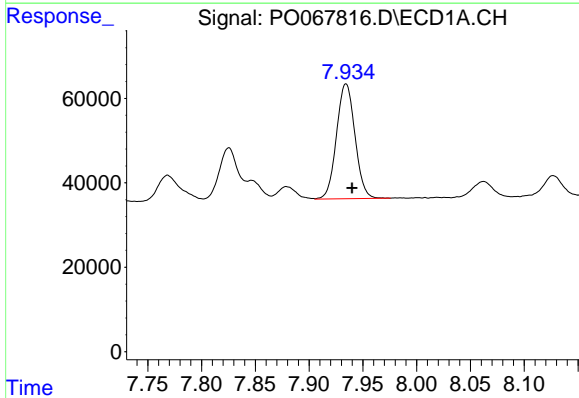
Instrument :
 ECD_O
ClientSampled :
 PB128140BS

Manual Integrations
APPROVED
 Sohil
 4/14/2020 5:01:08 PM



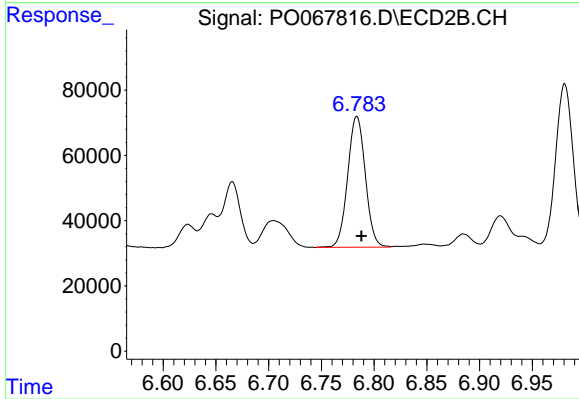
#7 AR-1016-5

R.T.: 5.687 min
 Delta R.T.: -0.005 min
 Response: 230944
 Conc: 204.08 ng/ml



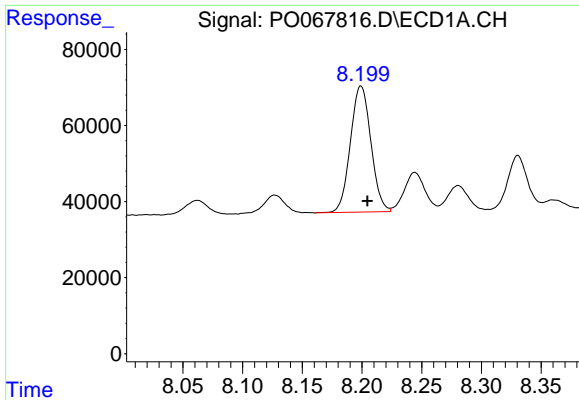
#31 AR-1260-1

R.T.: 7.934 min
 Delta R.T.: -0.006 min
 Response: 325318
 Conc: 240.72 ng/ml



#31 AR-1260-1

R.T.: 6.784 min
 Delta R.T.: -0.004 min
 Response: 466432
 Conc: 222.49 ng/ml

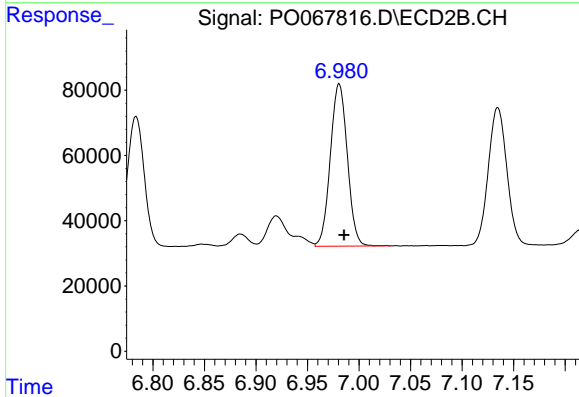


#32 AR-1260-2

R.T.: 8.199 min
 Delta R.T.: -0.005 min
 Response: 396264
 Conc: 234.73 ng/ml

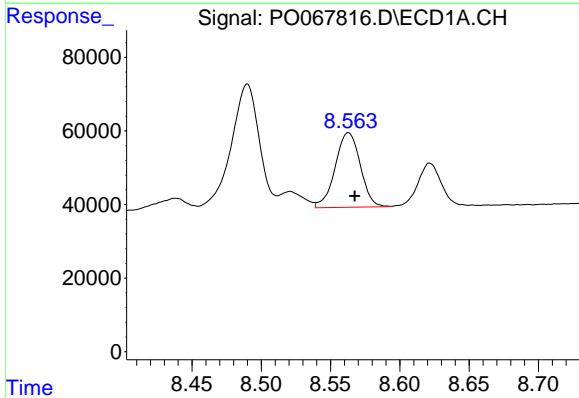
Instrument :
 ECD_O
 ClientSampled :
 PB128140BS

Manual Integrations
 APPROVED
 Sohil
 4/14/2020 5:01:08 PM



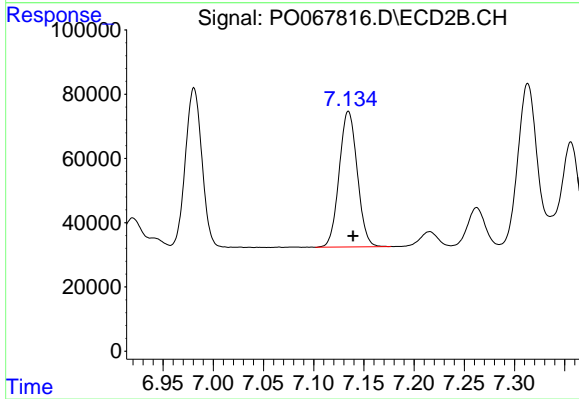
#32 AR-1260-2

R.T.: 6.981 min
 Delta R.T.: -0.005 min
 Response: 571222
 Conc: 222.46 ng/ml



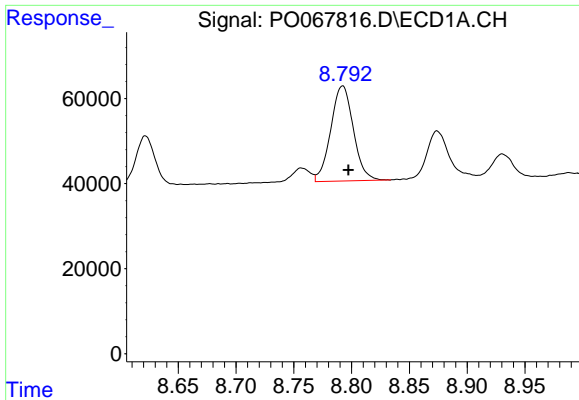
#33 AR-1260-3

R.T.: 8.563 min
 Delta R.T.: -0.005 min
 Response: 255588
 Conc: 196.08 ng/ml



#33 AR-1260-3

R.T.: 7.134 min
 Delta R.T.: -0.005 min
 Response: 528882
 Conc: 219.94 ng/ml m

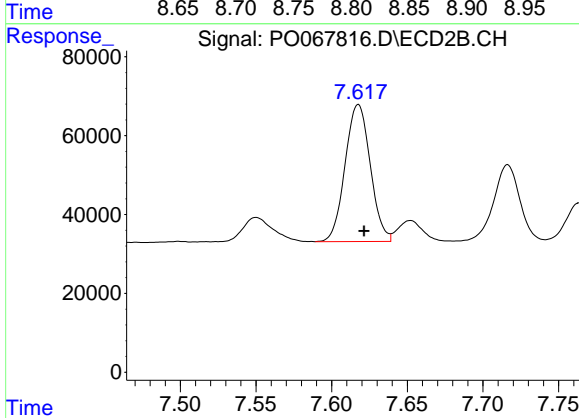


#34 AR-1260-4

R.T.: 8.792 min
 Delta R.T.: -0.005 min
 Response: 304107
 Conc: 197.88 ng/ml

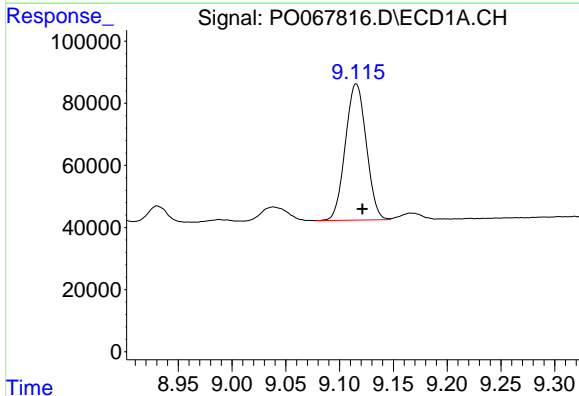
Instrument :
 ECD_O
 ClientSampled :
 PB128140BS

Manual Integrations
 APPROVED
 Sohil
 4/14/2020 5:01:08 PM



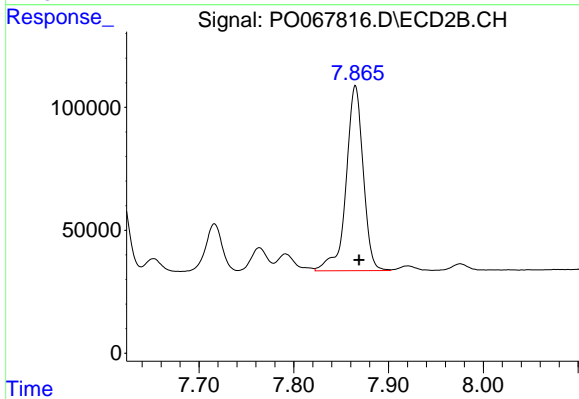
#34 AR-1260-4

R.T.: 7.618 min
 Delta R.T.: -0.004 min
 Response: 403312
 Conc: 191.90 ng/ml



#35 AR-1260-5

R.T.: 9.115 min
 Delta R.T.: -0.006 min
 Response: 594388
 Conc: 188.42 ng/ml



#35 AR-1260-5

R.T.: 7.865 min
 Delta R.T.: -0.004 min
 Response: 943513
 Conc: 186.37 ng/ml