

Data Path : Z:\pestpcbsrv\HPCHEM1\ECD\_0\Data\P0041520\  
 Data File : P0067825.D  
 Signal(s) : Signal #1: ECD1A.CH Signal #2: ECD2B.CH  
 Acq On : 15 Apr 2020 8:24  
 Operator : DD\AJ  
 Sample : AR1660CCC500  
 Misc :  
 ALS Vial : 3 Sample Multiplier: 1

**Instrument :**  
 ECD\_0  
**ClientSampleId :**  
 AR1660CCC500

**Manual Integrations**  
**APPROVED**  
 Sohil  
 4/16/2020 9:02:23 AM

Integration File signal 1: autoint1.e  
 Integration File signal 2: autoint2.e  
 Quant Time: Apr 15 12:22:48 2020  
 Quant Method : Z:\pestpcbsrv\HPCHEM1\ECD\_0\methods\P0040120.M  
 Quant Title : GC EXTRACTABLES  
 QLast Update : Fri Apr 03 16:04:09 2020  
 Response via : Initial Calibration  
 Integrator: ChemStation 6890 Scale Mode: Small noise peaks clipped

Volume Inj. : 2 µl  
 Signal #1 Phase : ZB-MR1 Signal #2 Phase: ZB-MR2  
 Signal #1 Info : 30Mx0.32mmx 0.50µ Signal #2 Info : 30M x 0.32mm x 0.25µm

Compound	RT#1	RT#2	Resp#1	Resp#2	ng/ml	ng/ml
-----						
System Monitoring Compounds						
1) SA Tetrachlo...	4.928	3.940	1376436	1718838	57.799	51.282
2) SA Decachlor...	10.905	9.223	1762620	1978271	51.775m	47.847
Target Compounds						
3) L1 AR-1016-1	6.249	5.195	561552	692755	544.544	472.573
4) L1 AR-1016-2	6.273	5.215	770673	939602	546.213	479.639
5) L1 AR-1016-3	6.339	5.405	475346	522159	540.791	499.260
6) L1 AR-1016-4	6.446	5.458	375205	433985	532.075	486.486
7) L1 AR-1016-5	6.759	5.685	389809	523741	542.125	462.826
31) L7 AR-1260-1	7.932	6.781	724157	1004574	535.844	479.182
32) L7 AR-1260-2	8.196	6.978	886461	1215208	525.100	473.259
33) L7 AR-1260-3	8.559	7.132	665380	1113566	510.463	463.083
34) L7 AR-1260-4	8.789	7.614	754299	978643	490.824	465.643
35) L7 AR-1260-5	9.111	7.862	1565370	2335149	496.216	461.262

(f)=RT Delta > 1/2 Window (#)=Amounts differ by > 25% (m)=manual int.

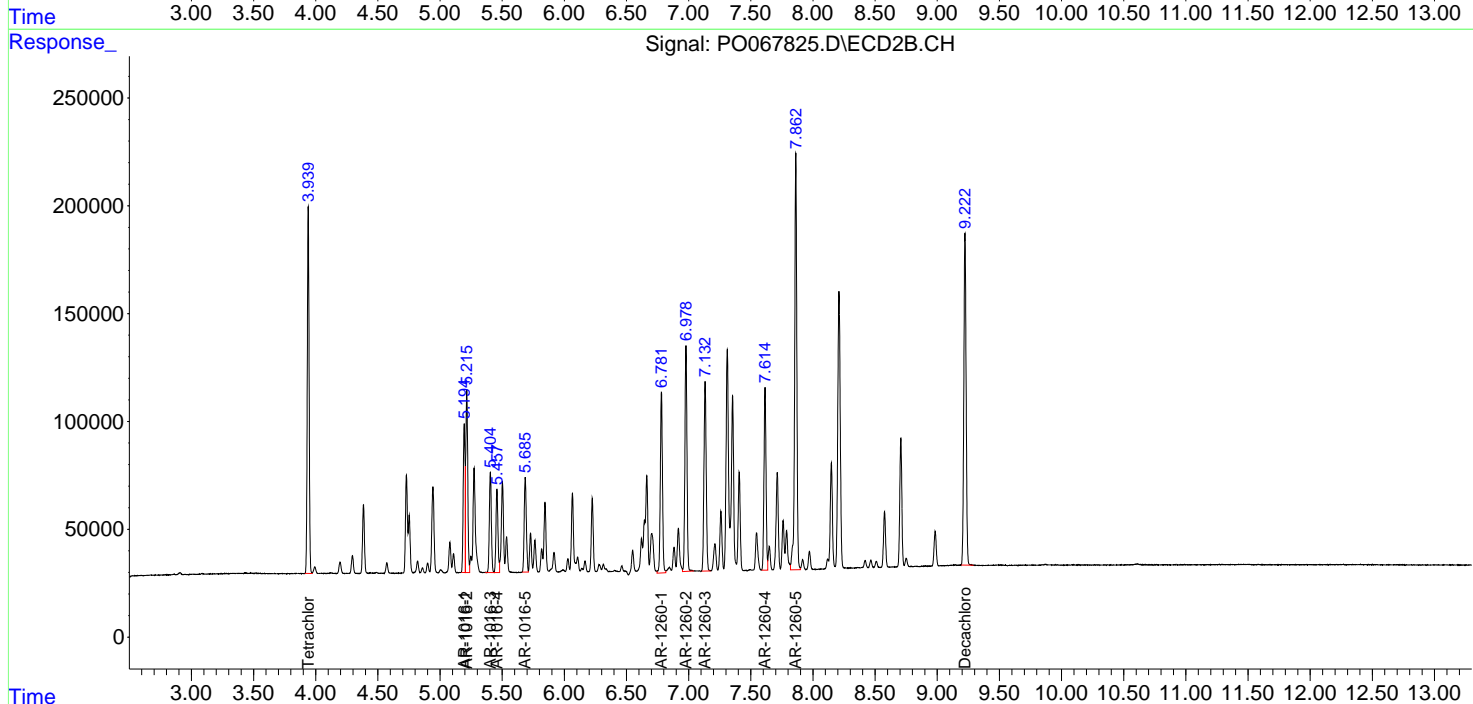
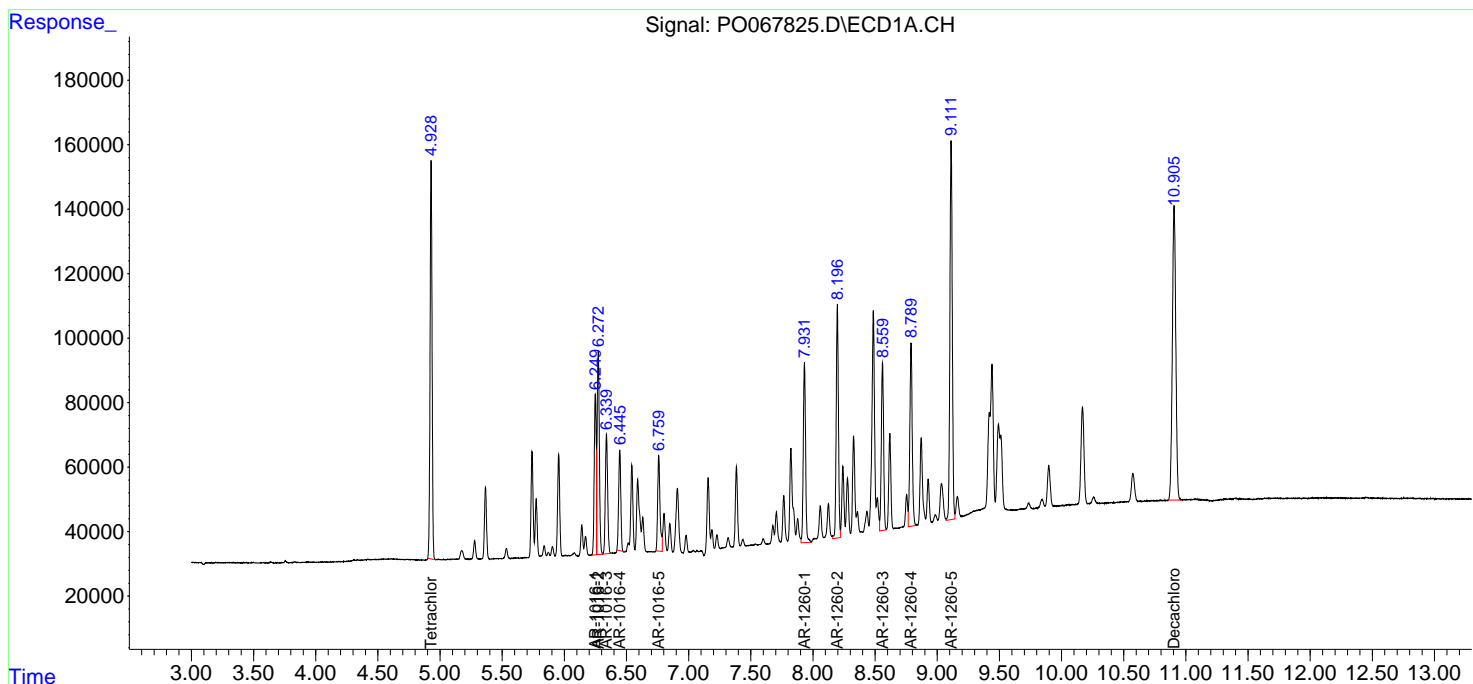
Data Path : Z:\pestpcbsrv\HPCHEM1\ECD\_0\Data\P0041520\  
 Data File : P0067825.D  
 Signal(s) : Signal #1: ECD1A.CH Signal #2: ECD2B.CH  
 Acq On : 15 Apr 2020 8:24  
 Operator : DD\AJ  
 Sample : AR1660CCC500  
 Misc :  
 ALS Vial : 3 Sample Multiplier: 1

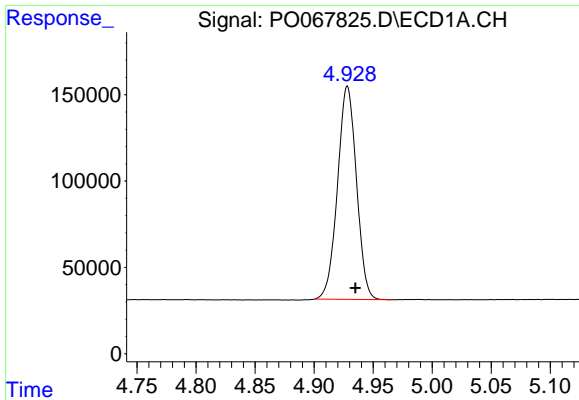
**Instrument :**  
 ECD\_O  
**Client Sampled :**  
 AR1660CCC500

**Manual Integrations**  
**APPROVED**  
 Sohil  
 4/16/2020 9:02:23 AM

Integration File signal 1: autoint1.e  
 Integration File signal 2: autoint2.e  
 Quant Time: Apr 15 12:22:48 2020  
 Quant Method : Z:\pestpcbsrv\HPCHEM1\ECD\_0\methods\P0040120.M  
 Quant Title : GC EXTRACTABLES  
 QLast Update : Fri Apr 03 16:04:09 2020  
 Response via : Initial Calibration  
 Integrator: ChemStation 6890 Scale Mode: Small noise peaks clipped

Volume Inj. : 2 µl  
 Signal #1 Phase : ZB-MR1 Signal #2 Phase: ZB-MR2  
 Signal #1 Info : 30Mx0.32mmx 0.50µ Signal #2 Info : 30M x 0.32mm x 0.25µm

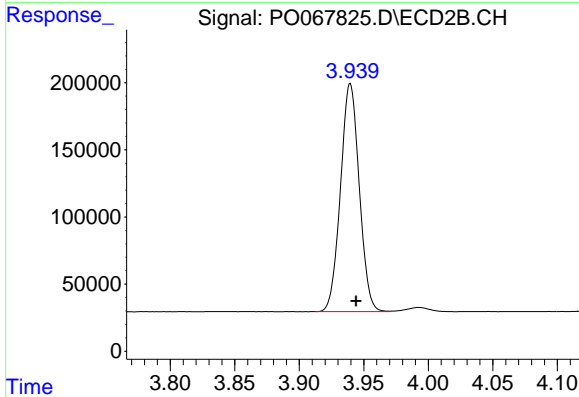




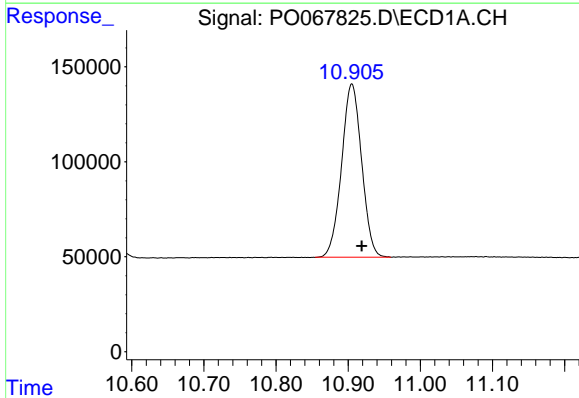
#1 Tetrachloro-m-xylene  
 R.T.: 4.928 min  
 Delta R.T.: -0.007 min  
 Response: 1376436  
 Conc: 57.80 ng/ml

**Instrument :**  
 ECD\_O  
**ClientSampled :**  
 AR1660CCC500

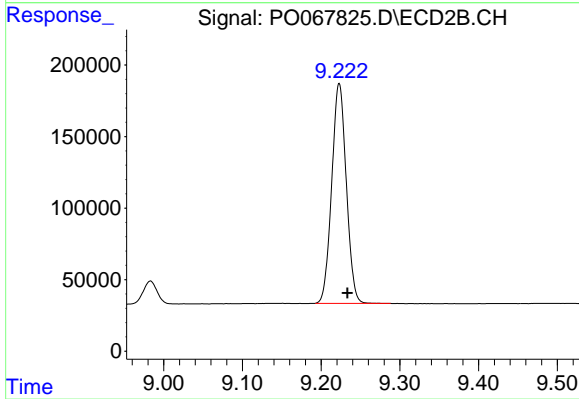
**Manual Integrations**  
**APPROVED**  
 Sohil  
 4/16/2020 9:02:23 AM



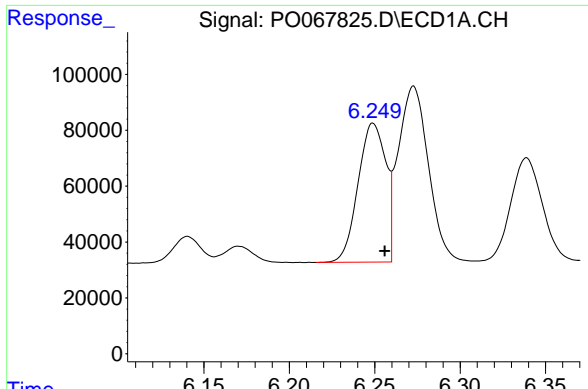
#1 Tetrachloro-m-xylene  
 R.T.: 3.940 min  
 Delta R.T.: -0.004 min  
 Response: 1718838  
 Conc: 51.28 ng/ml



#2 Decachlorobiphenyl  
 R.T.: 10.905 min  
 Delta R.T.: -0.014 min  
 Response: 1762620  
 Conc: 51.78 ng/ml m



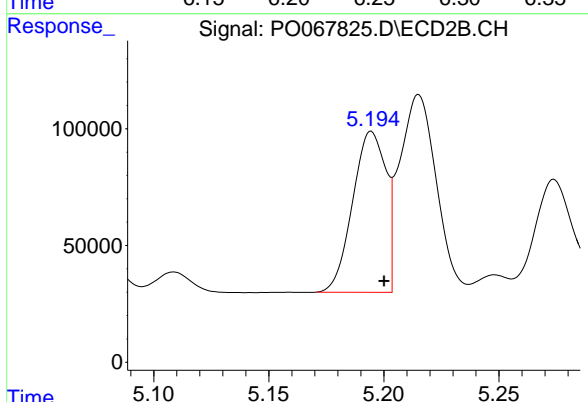
#2 Decachlorobiphenyl  
 R.T.: 9.223 min  
 Delta R.T.: -0.010 min  
 Response: 1978271  
 Conc: 47.85 ng/ml



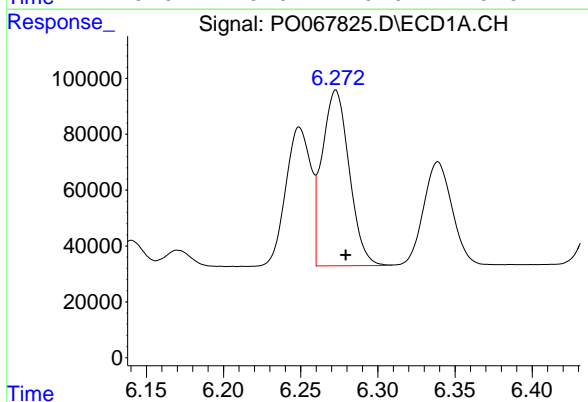
#3 AR-1016-1  
 R.T.: 6.249 min  
 Delta R.T.: -0.007 min  
 Response: 561552  
 Conc: 544.54 ng/ml

**Instrument :**  
 ECD\_O  
**ClientSampled :**  
 AR1660CCC500

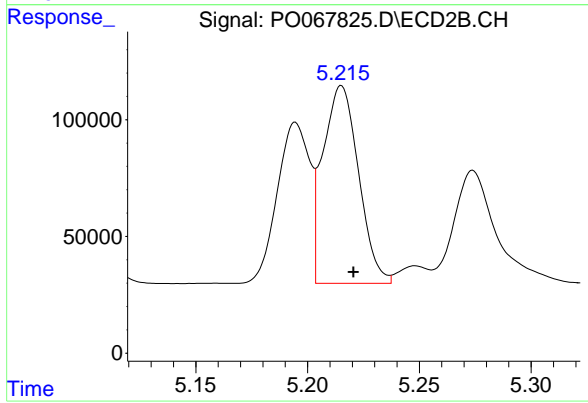
**Manual Integrations**  
**APPROVED**  
 Sohil  
 4/16/2020 9:02:23 AM



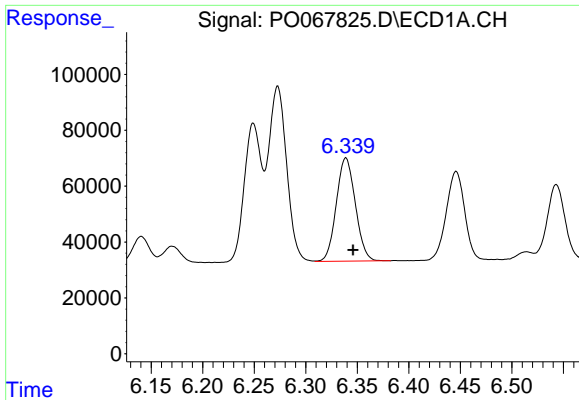
#3 AR-1016-1  
 R.T.: 5.195 min  
 Delta R.T.: -0.005 min  
 Response: 692755  
 Conc: 472.57 ng/ml



#4 AR-1016-2  
 R.T.: 6.273 min  
 Delta R.T.: -0.007 min  
 Response: 770673  
 Conc: 546.21 ng/ml



#4 AR-1016-2  
 R.T.: 5.215 min  
 Delta R.T.: -0.005 min  
 Response: 939602  
 Conc: 479.64 ng/ml



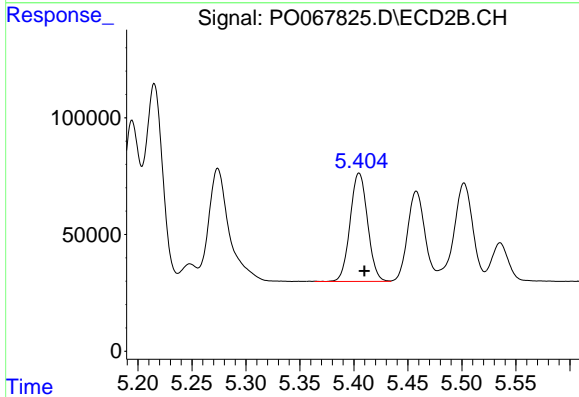
#5 AR-1016-3

R.T.: 6.339 min  
 Delta R.T.: -0.007 min  
 Response: 475346  
 Conc: 540.79 ng/ml

Instrument :  
 ECD\_O  
 ClientSampled :  
 AR1660CCC500

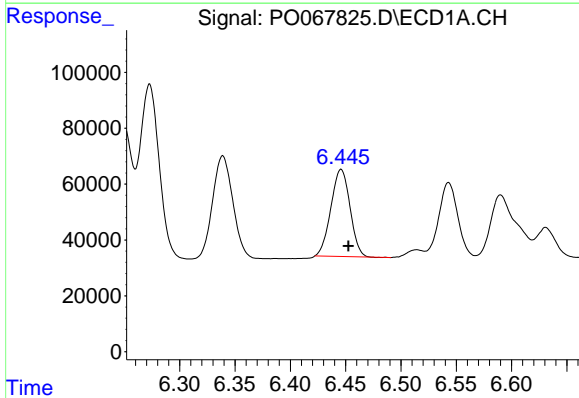
Manual Integrations  
 APPROVED

Sohil  
 4/16/2020 9:02:23 AM



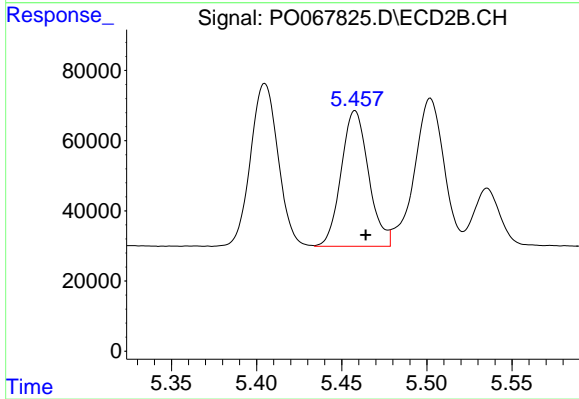
#5 AR-1016-3

R.T.: 5.405 min  
 Delta R.T.: -0.005 min  
 Response: 522159  
 Conc: 499.26 ng/ml



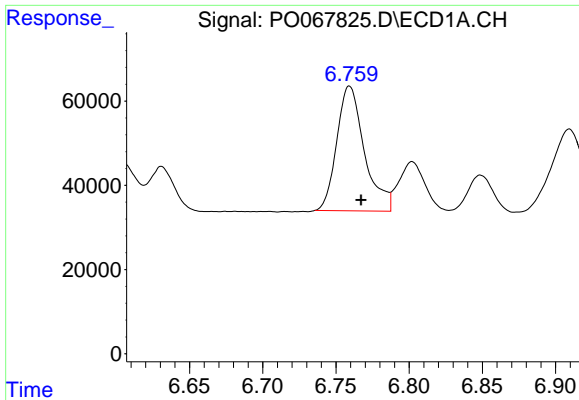
#6 AR-1016-4

R.T.: 6.446 min  
 Delta R.T.: -0.006 min  
 Response: 375205  
 Conc: 532.08 ng/ml



#6 AR-1016-4

R.T.: 5.458 min  
 Delta R.T.: -0.006 min  
 Response: 433985  
 Conc: 486.49 ng/ml

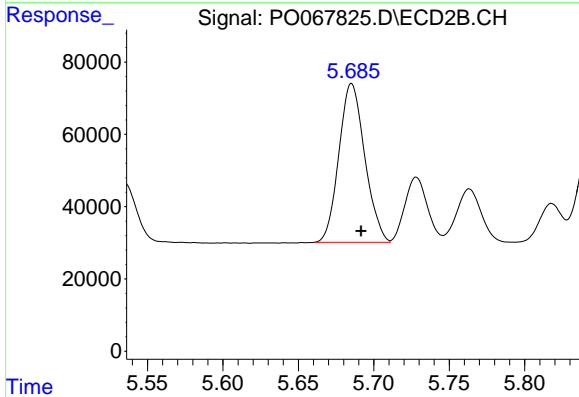


#7 AR-1016-5

R.T.: 6.759 min  
 Delta R.T.: -0.008 min  
 Response: 389809  
 Conc: 542.13 ng/ml

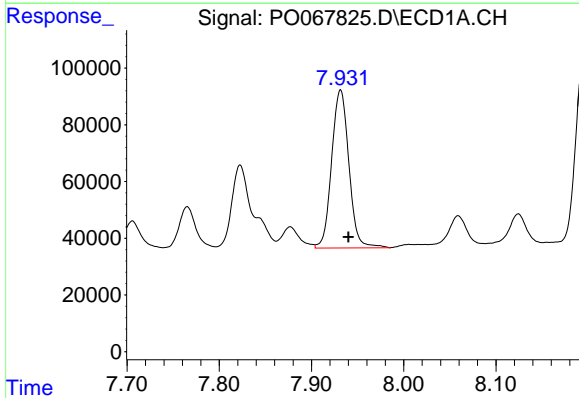
Instrument :  
 ECD\_O  
 ClientSampled :  
 AR1660CCC500

Manual Integrations  
 APPROVED  
 Sohil  
 4/16/2020 9:02:23 AM



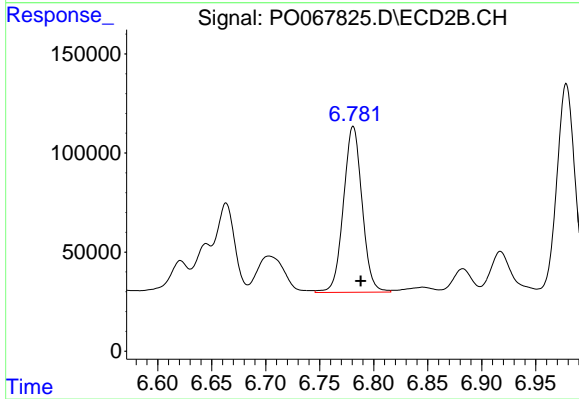
#7 AR-1016-5

R.T.: 5.685 min  
 Delta R.T.: -0.006 min  
 Response: 523741  
 Conc: 462.83 ng/ml



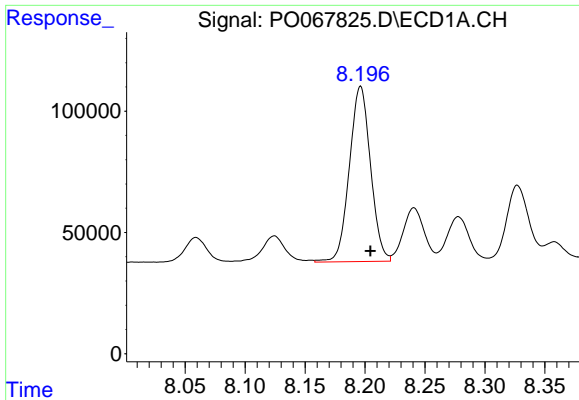
#31 AR-1260-1

R.T.: 7.932 min  
 Delta R.T.: -0.008 min  
 Response: 724157  
 Conc: 535.84 ng/ml



#31 AR-1260-1

R.T.: 6.781 min  
 Delta R.T.: -0.007 min  
 Response: 1004574  
 Conc: 479.18 ng/ml

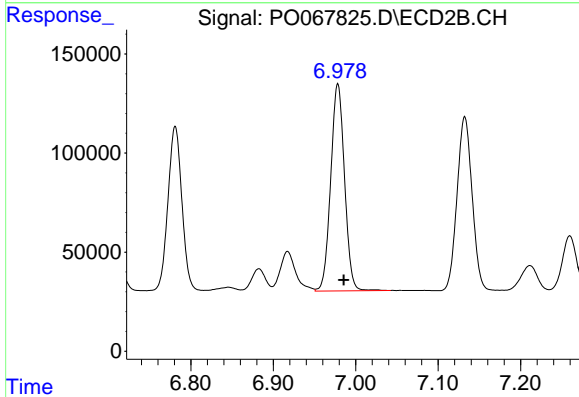


#32 AR-1260-2

R.T.: 8.196 min  
 Delta R.T.: -0.008 min  
 Response: 886461  
 Conc: 525.10 ng/ml

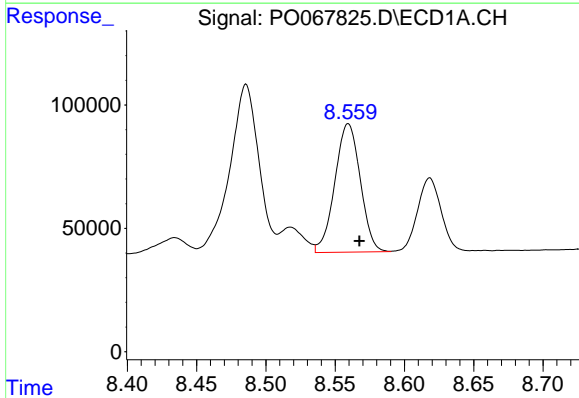
Instrument :  
 ECD\_O  
 ClientSampled :  
 AR1660CCC500

Manual Integrations  
 APPROVED  
 Sohil  
 4/16/2020 9:02:23 AM



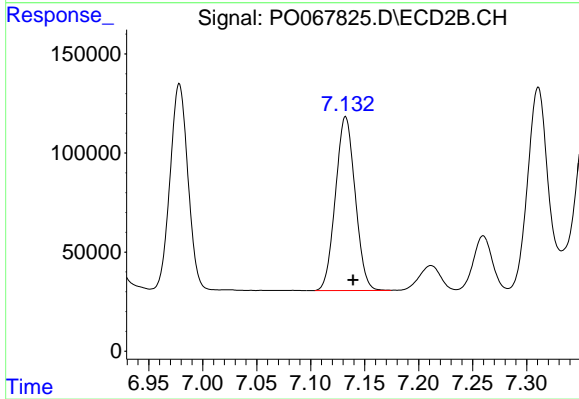
#32 AR-1260-2

R.T.: 6.978 min  
 Delta R.T.: -0.007 min  
 Response: 1215208  
 Conc: 473.26 ng/ml



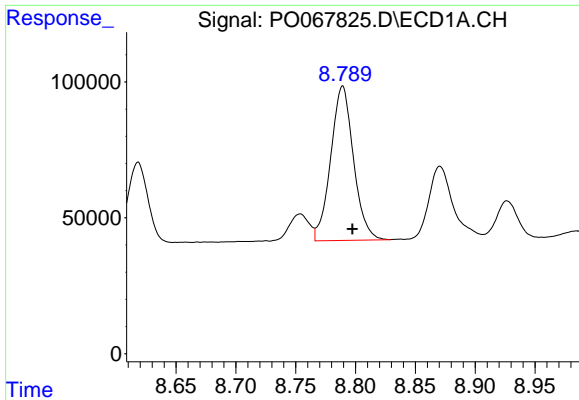
#33 AR-1260-3

R.T.: 8.559 min  
 Delta R.T.: -0.008 min  
 Response: 665380  
 Conc: 510.46 ng/ml



#33 AR-1260-3

R.T.: 7.132 min  
 Delta R.T.: -0.007 min  
 Response: 1113566  
 Conc: 463.08 ng/ml

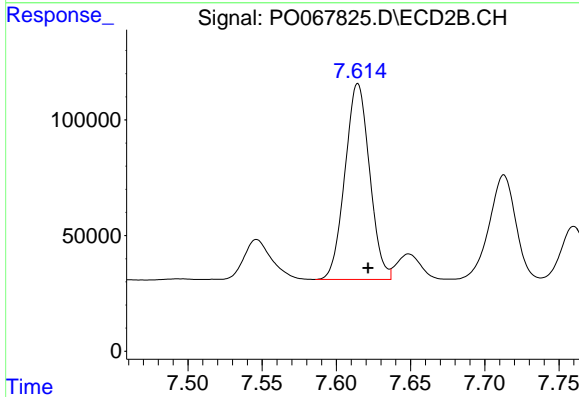


#34 AR-1260-4

R.T.: 8.789 min  
 Delta R.T.: -0.008 min  
 Response: 754299  
 Conc: 490.82 ng/ml

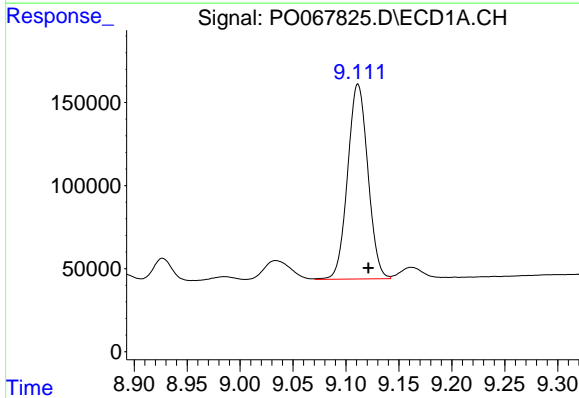
Instrument :  
 ECD\_O  
 ClientSampled :  
 AR1660CCC500

Manual Integrations  
 APPROVED  
 Sohil  
 4/16/2020 9:02:23 AM



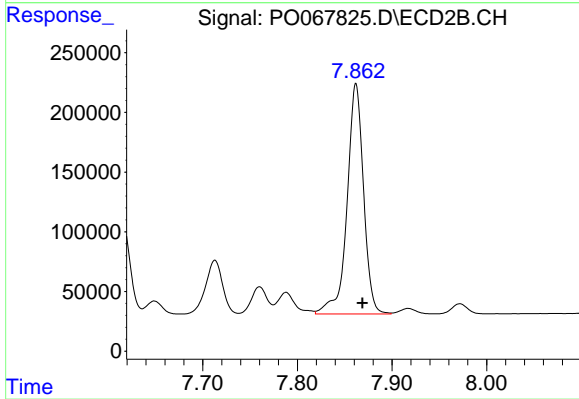
#34 AR-1260-4

R.T.: 7.614 min  
 Delta R.T.: -0.007 min  
 Response: 978643  
 Conc: 465.64 ng/ml



#35 AR-1260-5

R.T.: 9.111 min  
 Delta R.T.: -0.010 min  
 Response: 1565370  
 Conc: 496.22 ng/ml



#35 AR-1260-5

R.T.: 7.862 min  
 Delta R.T.: -0.007 min  
 Response: 2335149  
 Conc: 461.26 ng/ml