

Data Path : Z:\pestpcbsrv\HPCHEM1\ECD_0\Data\P0041520\
 Data File : P0067830.D
 Signal(s) : Signal #1: ECD1A.CH Signal #2: ECD2B.CH
 Acq On : 15 Apr 2020 9:58
 Operator : DD\AJ
 Sample : L2198-05
 Misc :
 ALS Vial : 8 Sample Multiplier: 1

Instrument :
 ECD_0
ClientSampleId :
 TP-43-COMP

Manual Integrations
APPROVED
 Sohil
 4/16/2020 9:02:27 AM

Integration File signal 1: autoint1.e
 Integration File signal 2: autoint2.e
 Quant Time: Apr 15 12:24:42 2020
 Quant Method : Z:\pestpcbsrv\HPCHEM1\ECD_0\methods\P0040120.M
 Quant Title : GC EXTRACTABLES
 QLast Update : Fri Apr 03 16:04:09 2020
 Response via : Initial Calibration
 Integrator: ChemStation 6890 Scale Mode: Small noise peaks clipped

Volume Inj. : 2 µl
 Signal #1 Phase : ZB-MR1 Signal #2 Phase: ZB-MR2
 Signal #1 Info : 30Mx0.32mmx 0.50µ Signal #2 Info : 30M x 0.32mm x 0.25µm

Compound	RT#1	RT#2	Resp#1	Resp#2	ng/ml	ng/ml

System Monitoring Compounds						
1) SA Tetrachlo...	4.926	3.939	676874	875948	28.423m	26.134
2) SA Decachlor...	10.904	9.223	875980	953535	25.731m	23.062

Target Compounds

(f)=RT Delta > 1/2 Window (#)=Amounts differ by > 25% (m)=manual int.

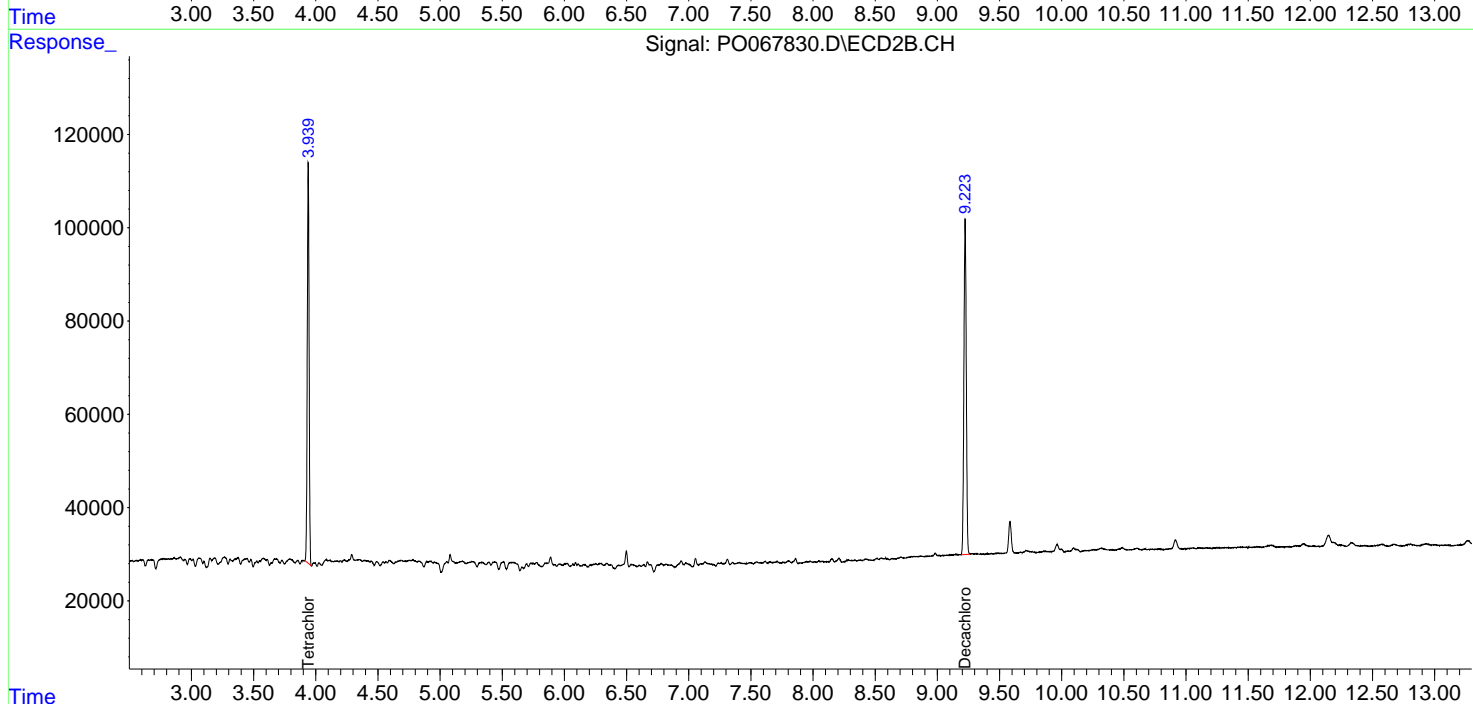
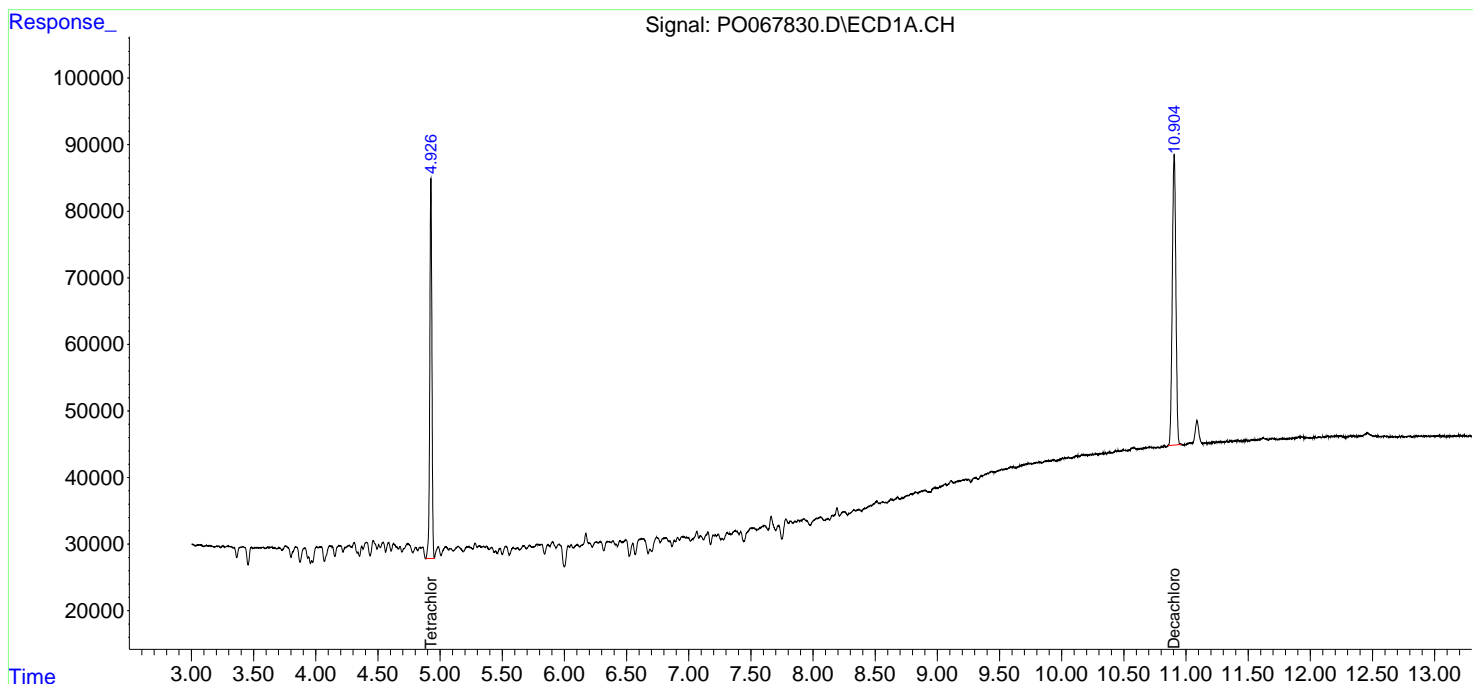
Data Path : Z:\pestpcbsrv\HPCHEM1\ECD_0\Data\P0041520\
 Data File : P0067830.D
 Signal(s) : Signal #1: ECD1A.CH Signal #2: ECD2B.CH
 Acq On : 15 Apr 2020 9:58
 Operator : DD\AJ
 Sample : L2198-05
 Misc :
 ALS Vial : 8 Sample Multiplier: 1

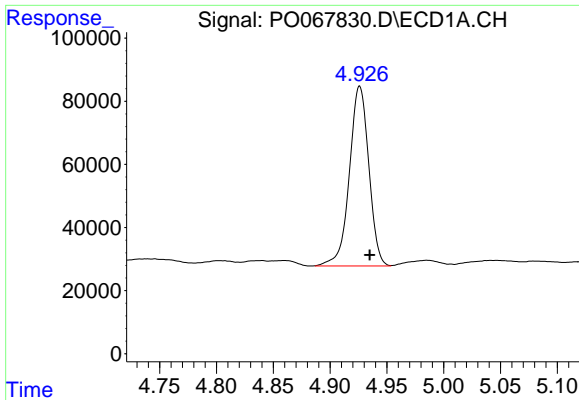
Instrument :
 ECD_O
ClientSampled :
 TP-43-COMP

Manual Integrations
APPROVED
 Sohil
 4/16/2020 9:02:27 AM

Integration File signal 1: autoint1.e
 Integration File signal 2: autoint2.e
 Quant Time: Apr 15 12:24:42 2020
 Quant Method : Z:\pestpcbsrv\HPCHEM1\ECD_0\methods\P0040120.M
 Quant Title : GC EXTRACTABLES
 QLast Update : Fri Apr 03 16:04:09 2020
 Response via : Initial Calibration
 Integrator: ChemStation 6890 Scale Mode: Small noise peaks clipped

Volume Inj. : 2 µl
 Signal #1 Phase : ZB-MR1 Signal #2 Phase: ZB-MR2
 Signal #1 Info : 30Mx0.32mmx 0.50µ Signal #2 Info : 30M x 0.32mm x 0.25µm

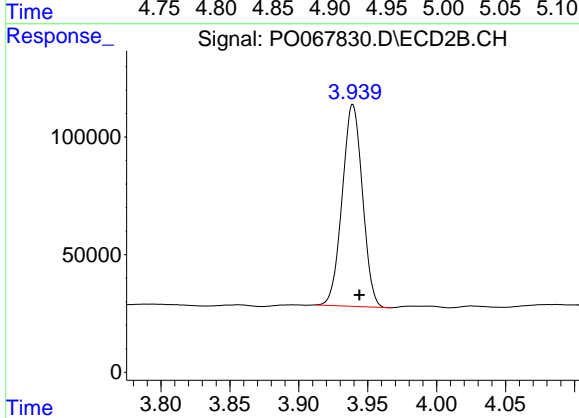




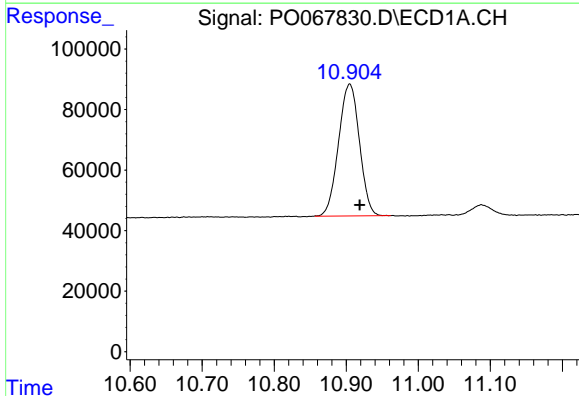
#1 Tetrachloro-m-xylene
 R.T.: 4.926 min
 Delta R.T.: -0.009 min
 Response: 676874
 Conc: 28.42 ng/ml m

Instrument :
 ECD_O
 ClientSampled :
 TP-43-COMP

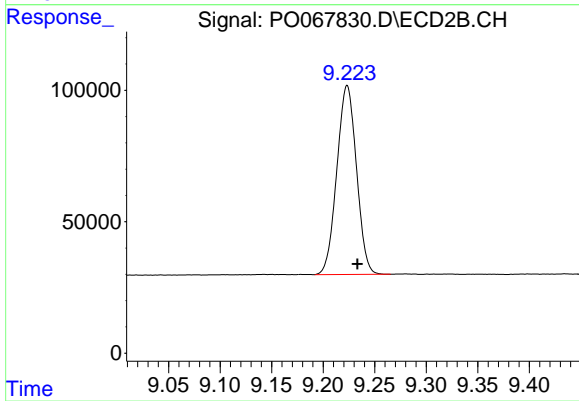
Manual Integrations
 APPROVED
 Sohil
 4/16/2020 9:02:27 AM



#1 Tetrachloro-m-xylene
 R.T.: 3.939 min
 Delta R.T.: -0.005 min
 Response: 875948
 Conc: 26.13 ng/ml



#2 Decachlorobiphenyl
 R.T.: 10.904 min
 Delta R.T.: -0.014 min
 Response: 875980
 Conc: 25.73 ng/ml m



#2 Decachlorobiphenyl
 R.T.: 9.223 min
 Delta R.T.: -0.010 min
 Response: 953535
 Conc: 23.06 ng/ml