

Data Path : P:\HPCHEM1\ECD O\Data\PO041718\
 Data File : PO043968.D
 Signal(s) : Signal #1: ECD1A.CH Signal #2: ECD2B.CH
 Acq On : 17 Apr 2018 18:35
 Operator : SM/UA
 Sample : J2386-07
 Misc :
 ALS Vial : 14 Sample Multiplier: 1

Instrument :
 ECD_O
ClientSampled :
 CO-7

Manual Integrations
APPROVED
 UGO
 4/18/2018 11:03:13 AM

Integration File signal 1: autoint1.e
 Integration File signal 2: autoint2.e
 Quant Time: Apr 18 04:07:17 2018
 Quant Method : P:\HPCHEM1\ECD_O\methods\PO040418.M
 Quant Title : GC EXTRACTABLES
 QLast Update : Wed Apr 04 15:17:57 2018
 Response via : Initial Calibration
 Integrator: ChemStation 6890 Scale Mode: Small noise peaks clipped

Volume Inj. : 2 µl
 Signal #1 Phase : ZB-MR1 Signal #2 Phase: ZB-MR2
 Signal #1 Info : 30Mx0.32mmx 0.50µ Signal #2 Info : 30M x 0.32mm x 0.25µm

Compound	RT#1	RT#2	Resp#1	Resp#2	ng/ml	ng/ml

System Monitoring Compounds						
1) SA Tetrachlo...	4.055	3.316	6144642	7093713	34.564	26.402m
2) SA Decachlor...	9.385	8.072	4407348	5591042	24.457m	23.848m

Target Compounds

 (f)=RT Delta > 1/2 Window (#)=Amounts differ by > 25% (m)=manual int.

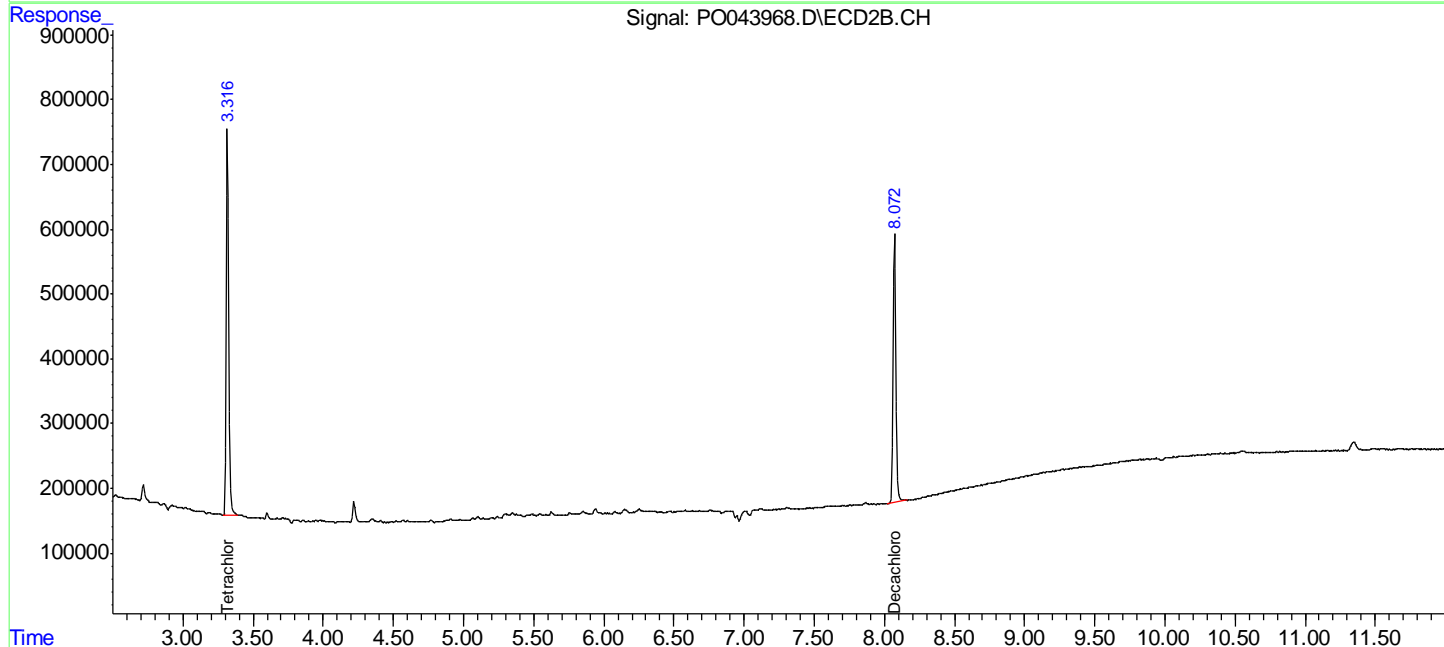
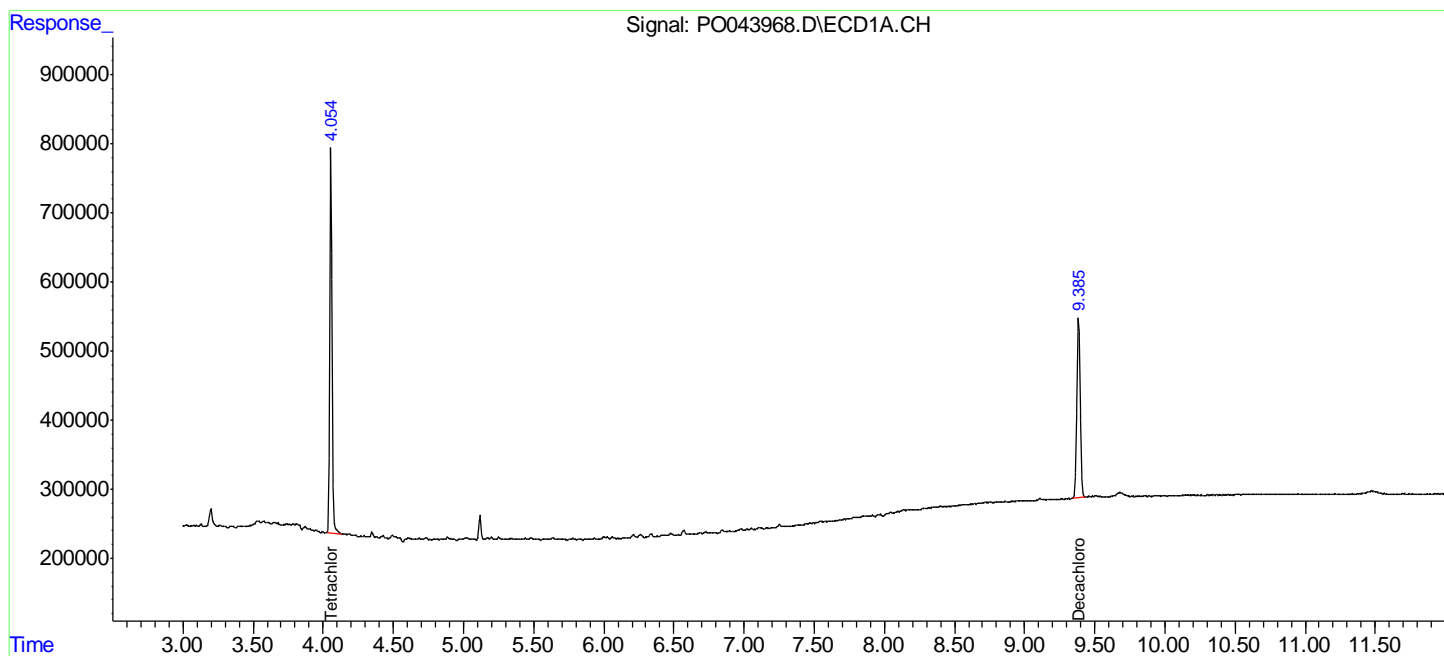
Data Path : P:\HPCHEM1\ECD O\Data\PO041718\
 Data File : PO043968.D
 Signal(s) : Signal #1: ECD1A.CH Signal #2: ECD2B.CH
 Acq On : 17 Apr 2018 18:35
 Operator : SM/UA
 Sample : J2386-07
 Misc :
 ALS Vial : 14 Sample Multiplier: 1

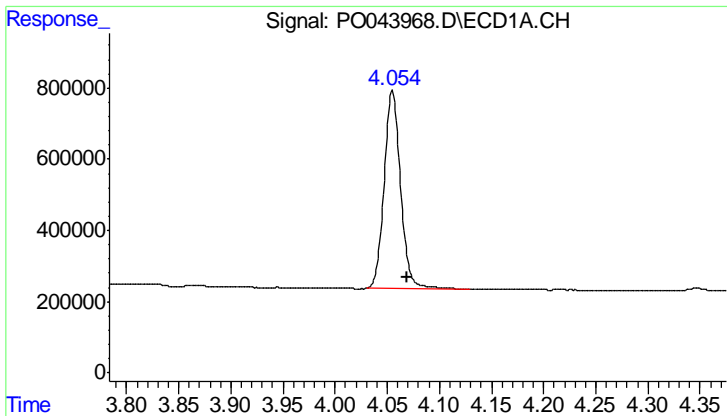
Instrument :
 ECD_O
 ClientSampled :
 CO-7

Manual Integrations
APPROVED
 UGO
 4/18/2018 11:03:13 AM

Integration File signal 1: autoint1.e
 Integration File signal 2: autoint2.e
 Quant Time: Apr 18 04:07:17 2018
 Quant Method : P:\HPCHEM1\ECD_O\methods\PO040418.M
 Quant Title : GC EXTRACTABLES
 QLast Update : Wed Apr 04 15:17:57 2018
 Response via : Initial Calibration
 Integrator: ChemStation 6890 Scale Mode: Small noise peaks clipped

Volume Inj. : 2 ul
 Signal #1 Phase : ZB-MR1 Signal #2 Phase: ZB-MR2
 Signal #1 Info : 30Mx0.32mmx 0.50µ Signal #2 Info : 30M x 0.32mm x 0.25µm





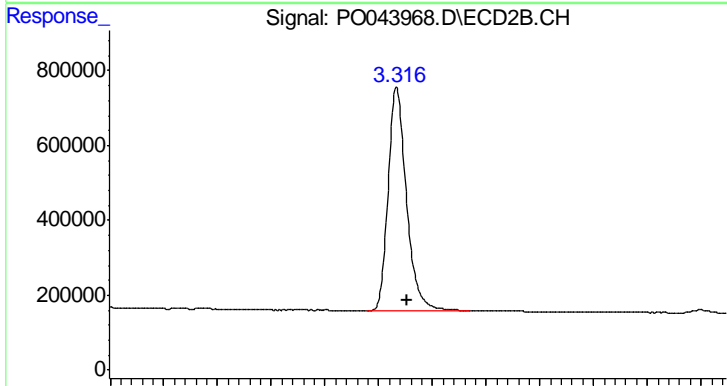
#1 Tetrachloro-m-xylene

R.T.: 4.055 min
 Delta R.T.: -0.015 min
 Response: 6144642
 Conc: 34.56 ng/ml

Instrument :
 ECD_O
 ClientSampled :
 CO-7

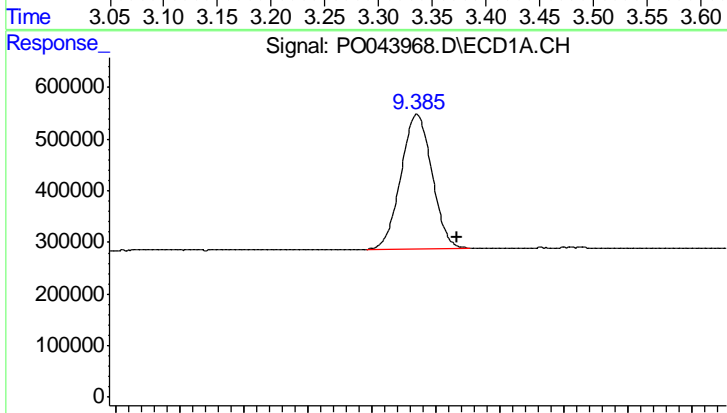
Manual Integrations
 APPROVED

UGO
 4/18/2018 11:03:13 AM



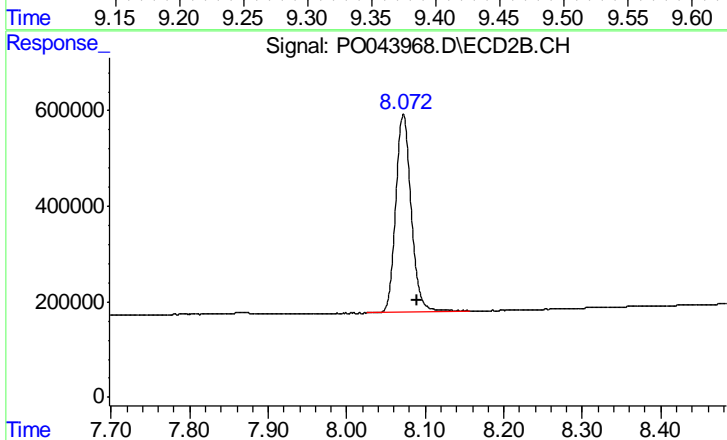
#1 Tetrachloro-m-xylene

R.T.: 3.316 min
 Delta R.T.: -0.010 min
 Response: 7093713
 Conc: 26.40 ng/ml m



#2 Decachlorobiphenyl

R.T.: 9.385 min
 Delta R.T.: -0.032 min
 Response: 4407348
 Conc: 24.46 ng/ml m



#2 Decachlorobiphenyl

R.T.: 8.072 min
 Delta R.T.: -0.019 min
 Response: 5591042
 Conc: 23.85 ng/ml m