

Data Path : Z:\pestpcbsrv\HPCHEM1\ECD_0\Data\P0041719\
 Data File : P0055411.D
 Signal(s) : Signal #1: ECD1A.CH Signal #2: ECD2B.CH
 Acq On : 17 Apr 2019 20:54
 Operator : SM/SJ
 Sample : K2436-01MS
 Misc :
 ALS Vial : 17 Sample Multiplier: 1

Instrument :
 ECD_0
 ClientSampleId :
 FK-GF-02-038-AMS

Manual Integrations
 APPROVED

mohammad
 4/19/2019 1:23:41 PM

Integration File signal 1: autoint1.e
 Integration File signal 2: autoint2.e
 Quant Time: Apr 18 00:59:16 2019
 Quant Method : Z:\pestpcbsrv\HPCHEM1\ECD_0\methods\P0032519.M
 Quant Title : GC EXTRACTABLES
 QLast Update : Mon Mar 25 17:22:26 2019
 Response via : Initial Calibration
 Integrator: ChemStation 6890 Scale Mode: Small noise peaks clipped

Volume Inj. : 2 µl
 Signal #1 Phase : ZB-MR1 Signal #2 Phase: ZB-MR2
 Signal #1 Info : 30Mx0.32mmx 0.50µ Signal #2 Info : 30M x 0.32mm x 0.25µm

Compound	RT#1	RT#2	Resp#1	Resp#2	ng/ml	ng/ml

System Monitoring Compounds						
1) SA Tetrachlo...	4.292	3.604	860931	880488	24.807	27.591
2) SA Decachlor...	9.904	8.567	788263	562416	15.990	17.659
Target Compounds						
3) L1 AR-1016-1	5.453	4.679	414874	395307	230.559m	249.974m
4) L1 AR-1016-2	5.476	4.699	574838	669025	231.446m	312.230m#
5) L1 AR-1016-3	5.538	4.872	449562	320141	285.754	264.968m
6) L1 AR-1016-4	5.635	4.913	308163	256120	236.488	253.450m
7) L1 AR-1016-5	5.927	5.125	331543	291338	248.485	223.522m
31) L7 AR-1260-1	7.047	6.151	1082088	1007698	430.657	438.497
32) L7 AR-1260-2	7.303	6.336	1426633	1208122	459.681	438.877m
33) L7 AR-1260-3	7.660	6.490	849418	1074308	346.085	416.737
34) L7 AR-1260-4	7.885	6.959	1252584	772575	452.849	363.024m
35) L7 AR-1260-5	8.194	7.199	1862124	1936530	335.602	404.346m

(f)=RT Delta > 1/2 Window (#)=Amounts differ by > 25% (m)=manual int.

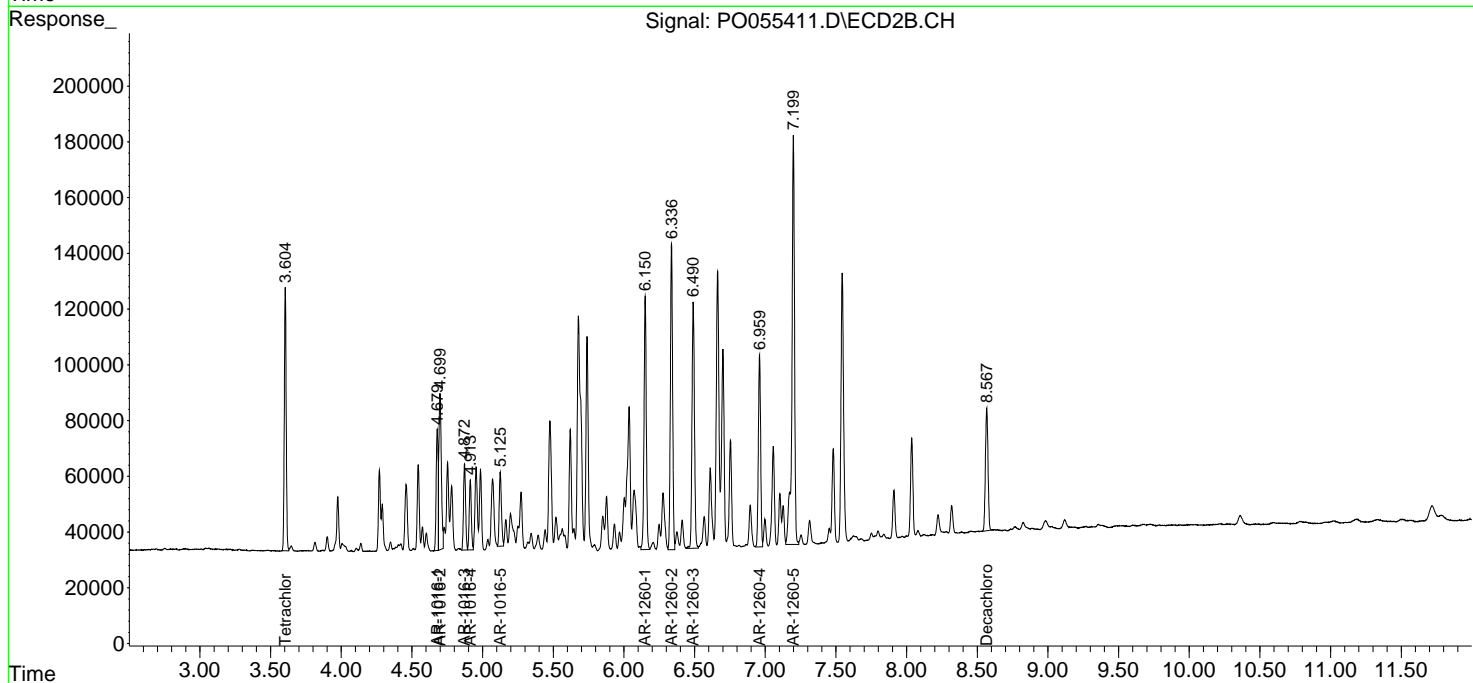
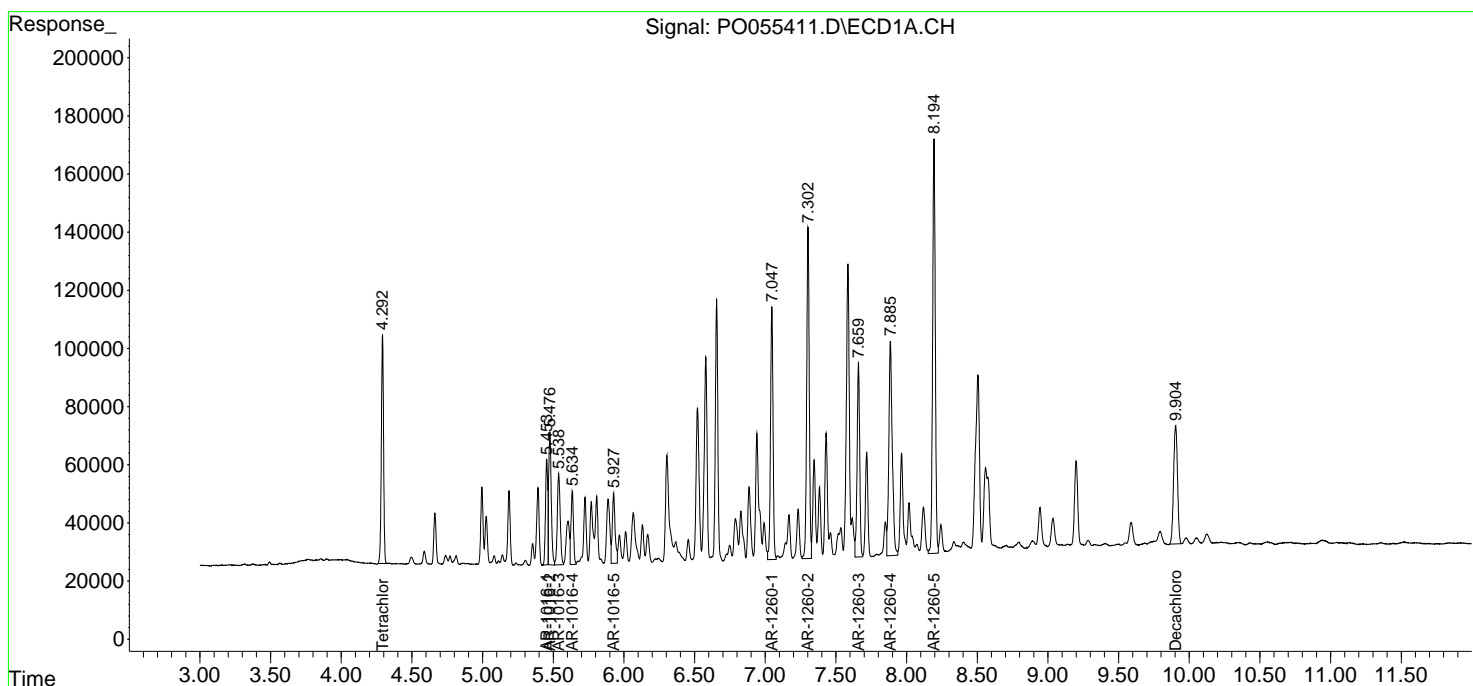
Data Path : Z:\pestpcbsrv\HPCHEM1\ECD_0\Data\P0041719\
 Data File : P0055411.D
 Signal(s) : Signal #1: ECD1A.CH Signal #2: ECD2B.CH
 Acq On : 17 Apr 2019 20:54
 Operator : SM/SJ
 Sample : K2436-01MS
 Misc :
 ALS Vial : 17 Sample Multiplier: 1

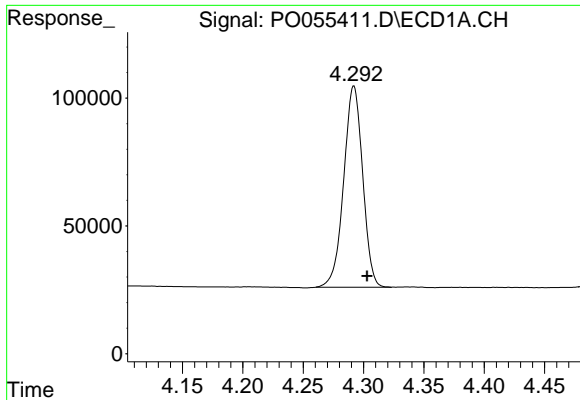
Instrument :
 ECD_O
 ClientSampleID :
 FK-GF-02-038-AMS

Manual Integrations
APPROVED
 mohammad
 4/19/2019 1:23:41 PM

Integration File signal 1: autoint1.e
 Integration File signal 2: autoint2.e
 Quant Time: Apr 18 00:59:16 2019
 Quant Method : Z:\pestpcbsrv\HPCHEM1\ECD_0\methods\P0032519.M
 Quant Title : GC EXTRACTABLES
 QLast Update : Mon Mar 25 17:22:26 2019
 Response via : Initial Calibration
 Integrator: ChemStation 6890 Scale Mode: Small noise peaks clipped

Volume Inj. : 2 µl
 Signal #1 Phase : ZB-MR1 Signal #2 Phase: ZB-MR2
 Signal #1 Info : 30Mx0.32mmx 0.50µ Signal #2 Info : 30M x 0.32mm x 0.25µm

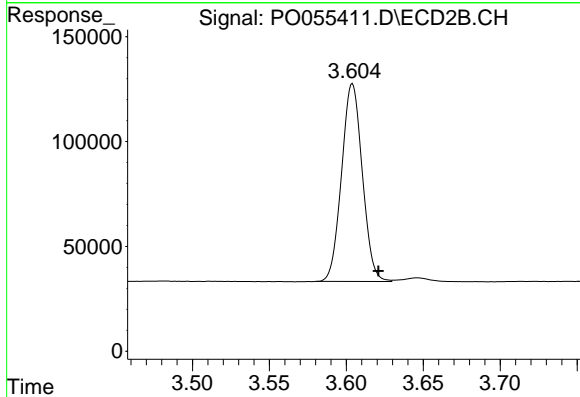




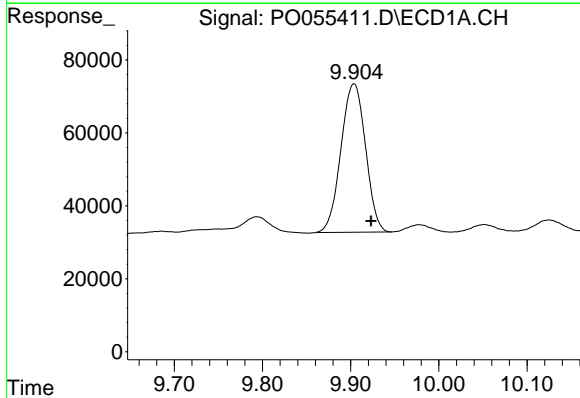
#1 Tetrachloro-m-xylene
 R.T.: 4.292 min
 Delta R.T.: -0.011 min
 Response: 860931
 Conc: 24.81 ng/ml

Instrument :
 ECD_O
 ClientSampleId :
 FK-GF-02-038-AMS

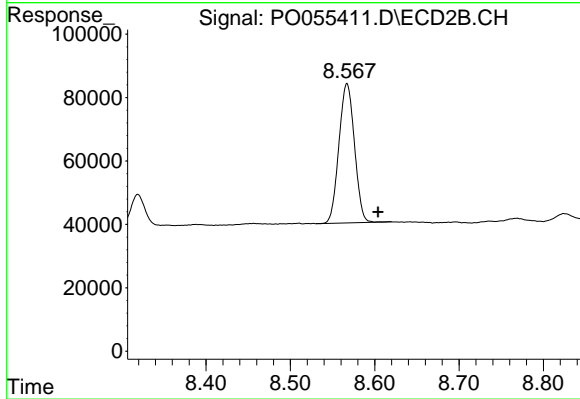
Manual Integrations
 APPROVED
 mohammad
 4/19/2019 1:23:41 PM



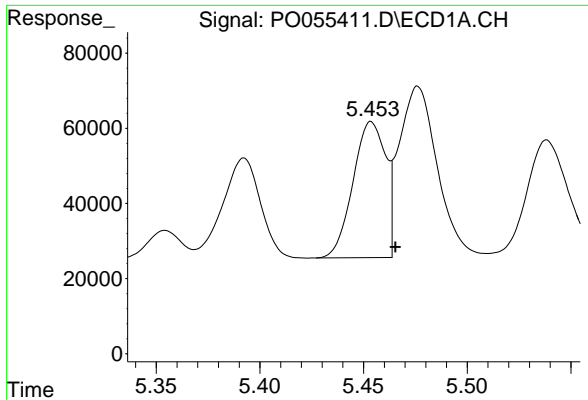
#1 Tetrachloro-m-xylene
 R.T.: 3.604 min
 Delta R.T.: -0.017 min
 Response: 880488
 Conc: 27.59 ng/ml



#2 Decachlorobiphenyl
 R.T.: 9.904 min
 Delta R.T.: -0.019 min
 Response: 788263
 Conc: 15.99 ng/ml



#2 Decachlorobiphenyl
 R.T.: 8.567 min
 Delta R.T.: -0.037 min
 Response: 562416
 Conc: 17.66 ng/ml

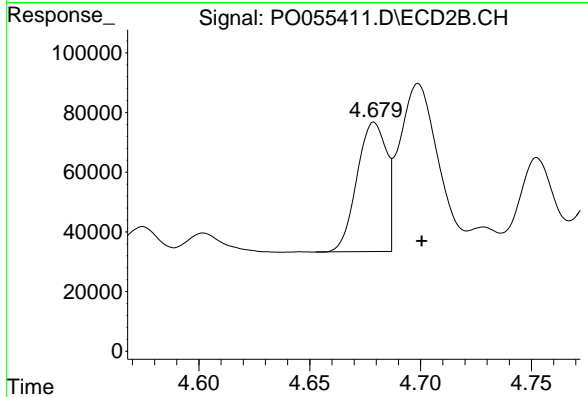


#3 AR-1016-1

R.T.: 5.453 min
 Delta R.T.: -0.012 min
 Response: 414874
 Conc: 230.56 ng/ml m

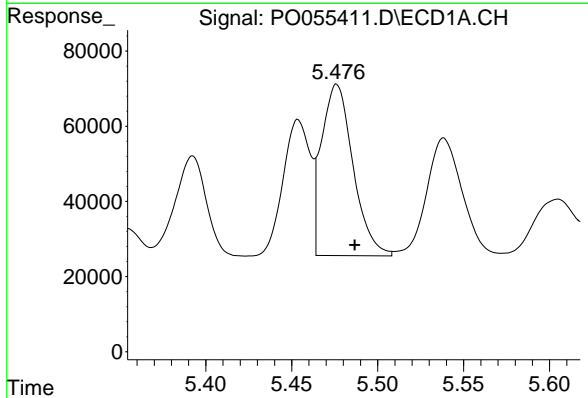
Instrument :
 ECD_O
ClientSampled :
 FK-GF-02-038-AMS

Manual Integrations
APPROVED
 mohammad
 4/19/2019 1:23:41 PM



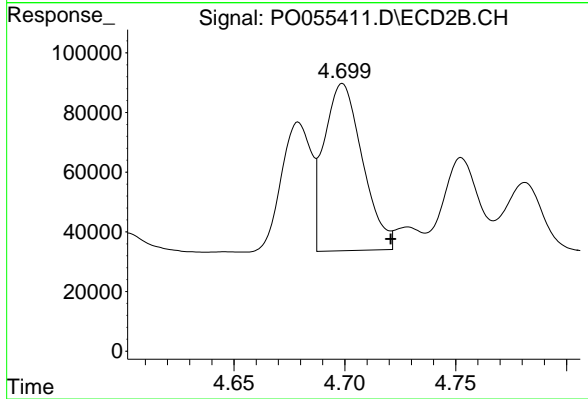
#3 AR-1016-1

R.T.: 4.679 min
 Delta R.T.: -0.022 min
 Response: 395307
 Conc: 249.97 ng/ml m



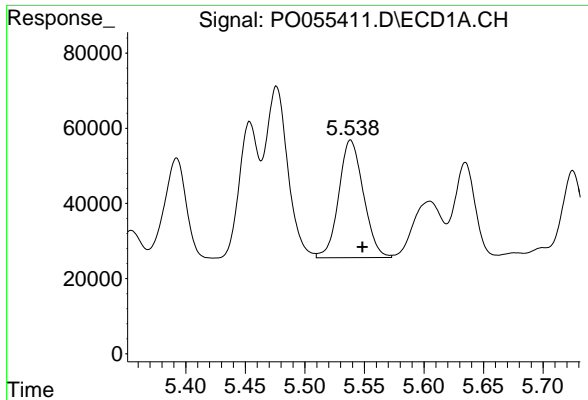
#4 AR-1016-2

R.T.: 5.476 min
 Delta R.T.: -0.011 min
 Response: 574838
 Conc: 231.45 ng/ml m



#4 AR-1016-2

R.T.: 4.699 min
 Delta R.T.: -0.022 min
 Response: 669025
 Conc: 312.23 ng/ml m

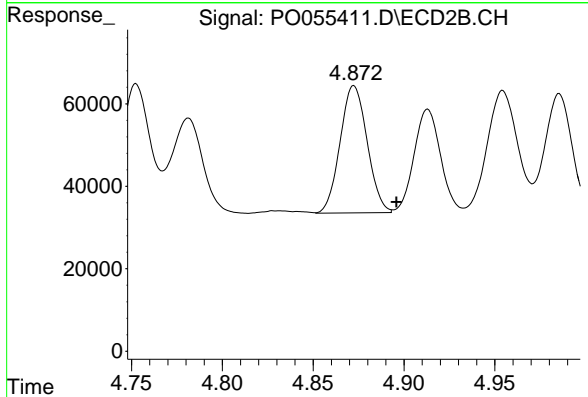


#5 AR-1016-3

R.T.: 5.538 min
 Delta R.T.: -0.010 min
 Response: 449562
 Conc: 285.75 ng/ml

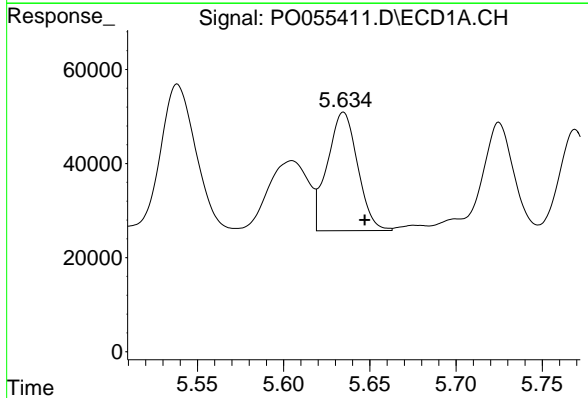
Instrument :
 ECD_O
ClientSampleId :
 FK-GF-02-038-AMS

Manual Integrations
APPROVED
 mohammad
 4/19/2019 1:23:41 PM



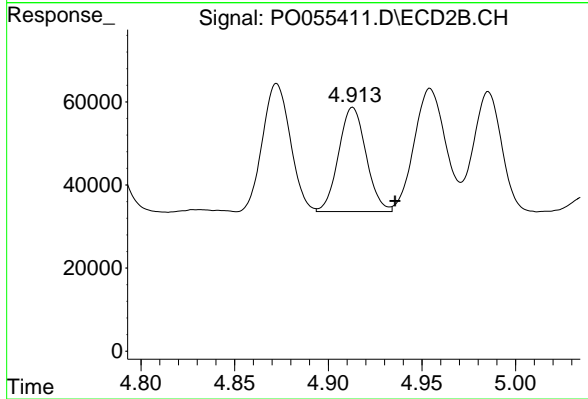
#5 AR-1016-3

R.T.: 4.872 min
 Delta R.T.: -0.024 min
 Response: 320141
 Conc: 264.97 ng/ml m



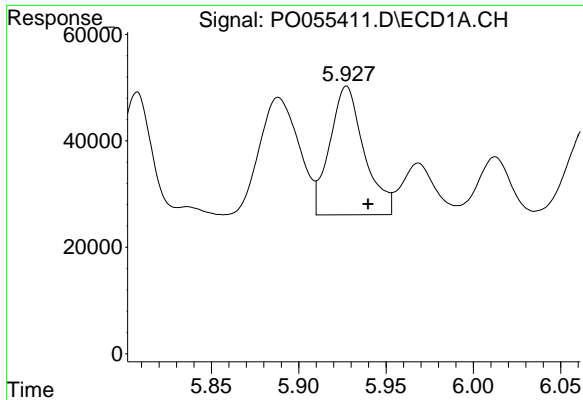
#6 AR-1016-4

R.T.: 5.635 min
 Delta R.T.: -0.012 min
 Response: 308163
 Conc: 236.49 ng/ml



#6 AR-1016-4

R.T.: 4.913 min
 Delta R.T.: -0.023 min
 Response: 256120
 Conc: 253.45 ng/ml m

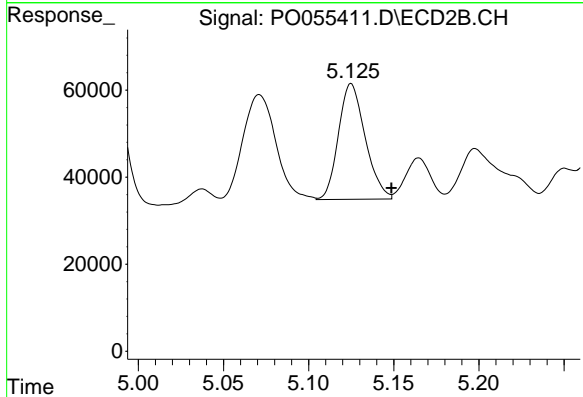


#7 AR-1016-5

R.T.: 5.927 min
 Delta R.T.: -0.012 min
 Response: 331543
 Conc: 248.48 ng/ml

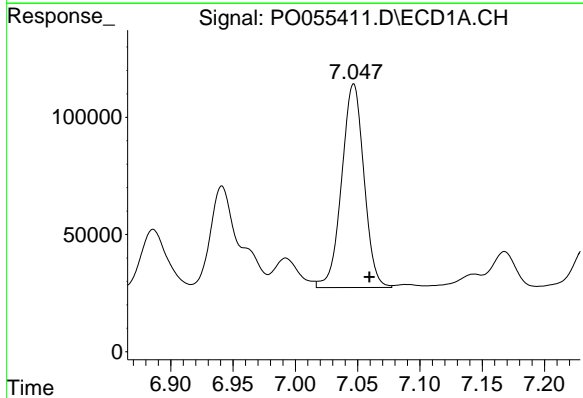
Instrument :
 ECD_O
ClientSampleId :
 FK-GF-02-038-AMS

Manual Integrations
APPROVED
 mohammad
 4/19/2019 1:23:41 PM



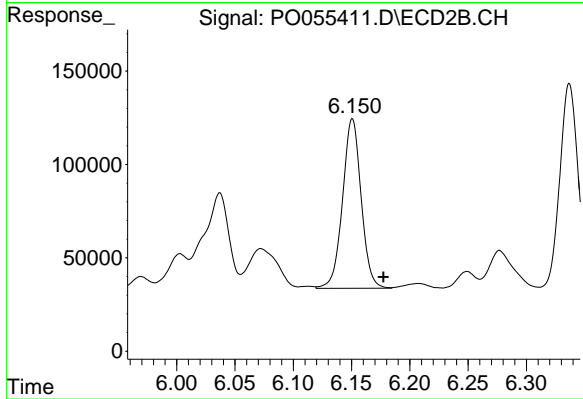
#7 AR-1016-5

R.T.: 5.125 min
 Delta R.T.: -0.024 min
 Response: 291338
 Conc: 223.52 ng/ml m



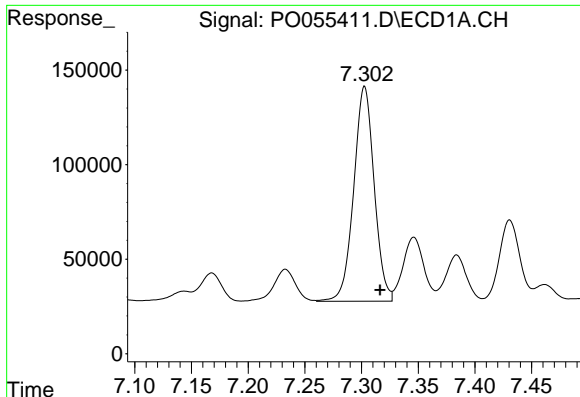
#31 AR-1260-1

R.T.: 7.047 min
 Delta R.T.: -0.013 min
 Response: 1082088
 Conc: 430.66 ng/ml



#31 AR-1260-1

R.T.: 6.151 min
 Delta R.T.: -0.027 min
 Response: 1007698
 Conc: 438.50 ng/ml

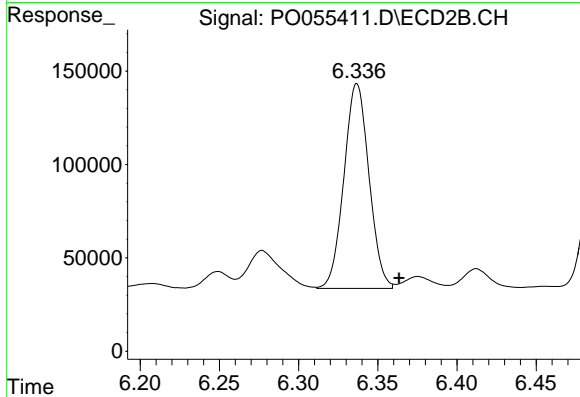


#32 AR-1260-2

R.T.: 7.303 min
 Delta R.T.: -0.014 min
 Response: 1426633
 Conc: 459.68 ng/ml

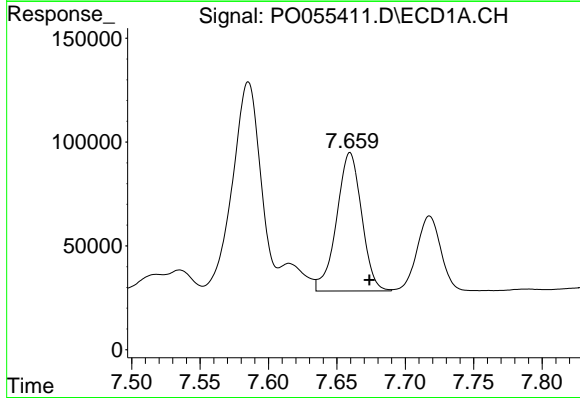
Instrument :
 ECD_O
 ClientSampleId :
 FK-GF-02-038-AMS

Manual Integrations
 APPROVED
 mohammad
 4/19/2019 1:23:41 PM



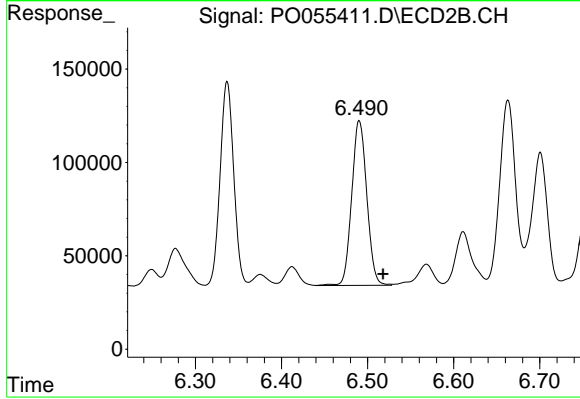
#32 AR-1260-2

R.T.: 6.336 min
 Delta R.T.: -0.027 min
 Response: 1208122
 Conc: 438.88 ng/ml m



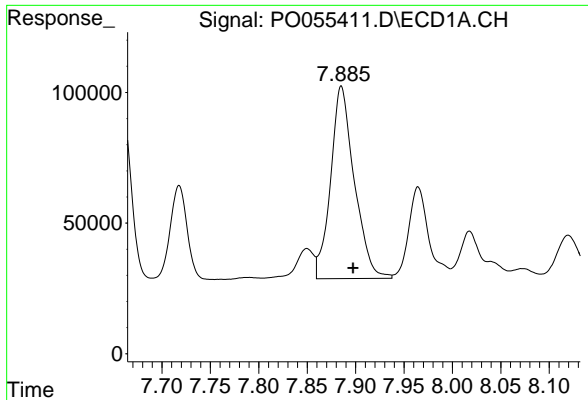
#33 AR-1260-3

R.T.: 7.660 min
 Delta R.T.: -0.014 min
 Response: 849418
 Conc: 346.09 ng/ml



#33 AR-1260-3

R.T.: 6.490 min
 Delta R.T.: -0.028 min
 Response: 1074308
 Conc: 416.74 ng/ml

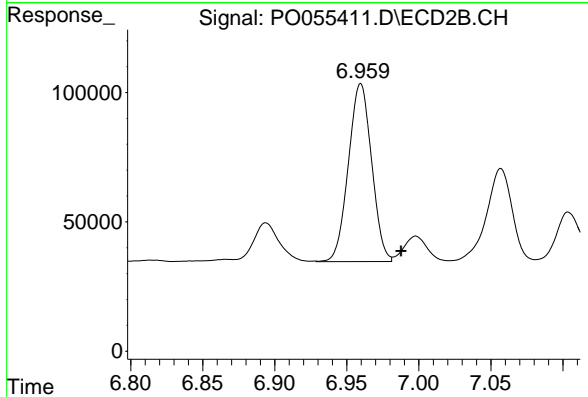


#34 AR-1260-4

R.T.: 7.885 min
 Delta R.T.: -0.012 min
 Response: 1252584
 Conc: 452.85 ng/ml

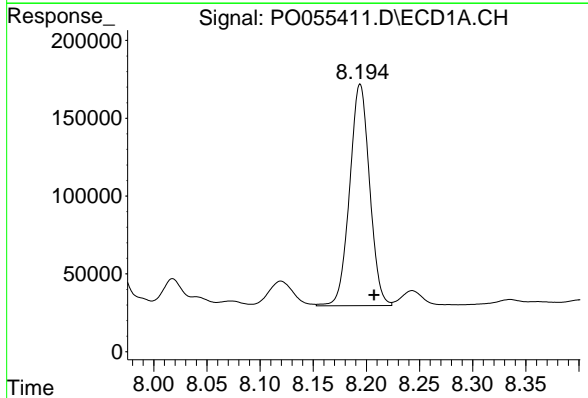
Instrument :
 ECD_O
ClientSampled :
 FK-GF-02-038-AMS

Manual Integrations
APPROVED
 mohammad
 4/19/2019 1:23:41 PM



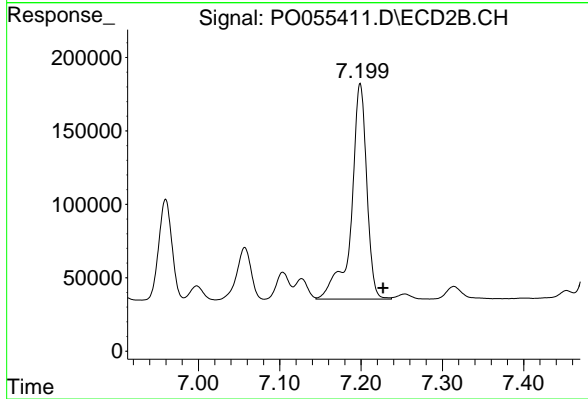
#34 AR-1260-4

R.T.: 6.959 min
 Delta R.T.: -0.028 min
 Response: 772575
 Conc: 363.02 ng/ml m



#35 AR-1260-5

R.T.: 8.194 min
 Delta R.T.: -0.013 min
 Response: 1862124
 Conc: 335.60 ng/ml



#35 AR-1260-5

R.T.: 7.199 min
 Delta R.T.: -0.028 min
 Response: 1936530
 Conc: 404.35 ng/ml m