

Data Path : Z:\pestpcbsrv\HPCHEM1\ECD\_0\Data\P0041720\  
 Data File : P0067911.D  
 Signal(s) : Signal #1: ECD1A.CH Signal #2: ECD2B.CH  
 Acq On : 17 Apr 2020 16:58  
 Operator : DD\AJ  
 Sample : L2323-05  
 Misc :  
 ALS Vial : 17 Sample Multiplier: 1

**Instrument :**  
 ECD\_0  
**ClientSampleId :**  
 TP-20-COMP

**Manual Integrations**  
**APPROVED**  
 Sohil  
 4/20/2020 1:58:03 PM

Integration File signal 1: autoint1.e  
 Integration File signal 2: autoint2.e  
 Quant Time: Apr 17 17:59:45 2020  
 Quant Method : Z:\pestpcbsrv\HPCHEM1\ECD\_0\methods\P0040120.M  
 Quant Title : GC EXTRACTABLES  
 QLast Update : Fri Apr 03 16:04:09 2020  
 Response via : Initial Calibration  
 Integrator: ChemStation 6890 Scale Mode: Small noise peaks clipped

Volume Inj. : 2 µl  
 Signal #1 Phase : ZB-MR1 Signal #2 Phase: ZB-MR2  
 Signal #1 Info : 30Mx0.32mmx 0.50µ Signal #2 Info : 30M x 0.32mm x 0.25µm

| Compound                    | RT#1   | RT#2  | Resp#1 | Resp#2 | ng/ml   | ng/ml  |
|-----------------------------|--------|-------|--------|--------|---------|--------|
| -----                       |        |       |        |        |         |        |
| System Monitoring Compounds |        |       |        |        |         |        |
| 1) SA Tetrachlo...          | 4.923  | 3.939 | 476815 | 701886 | 20.022m | 20.941 |
| 2) SA Decachlor...          | 10.894 | 9.220 | 676691 | 722325 | 19.877m | 17.470 |

Target Compounds

(f)=RT Delta > 1/2 Window (#)=Amounts differ by > 25% (m)=manual int.

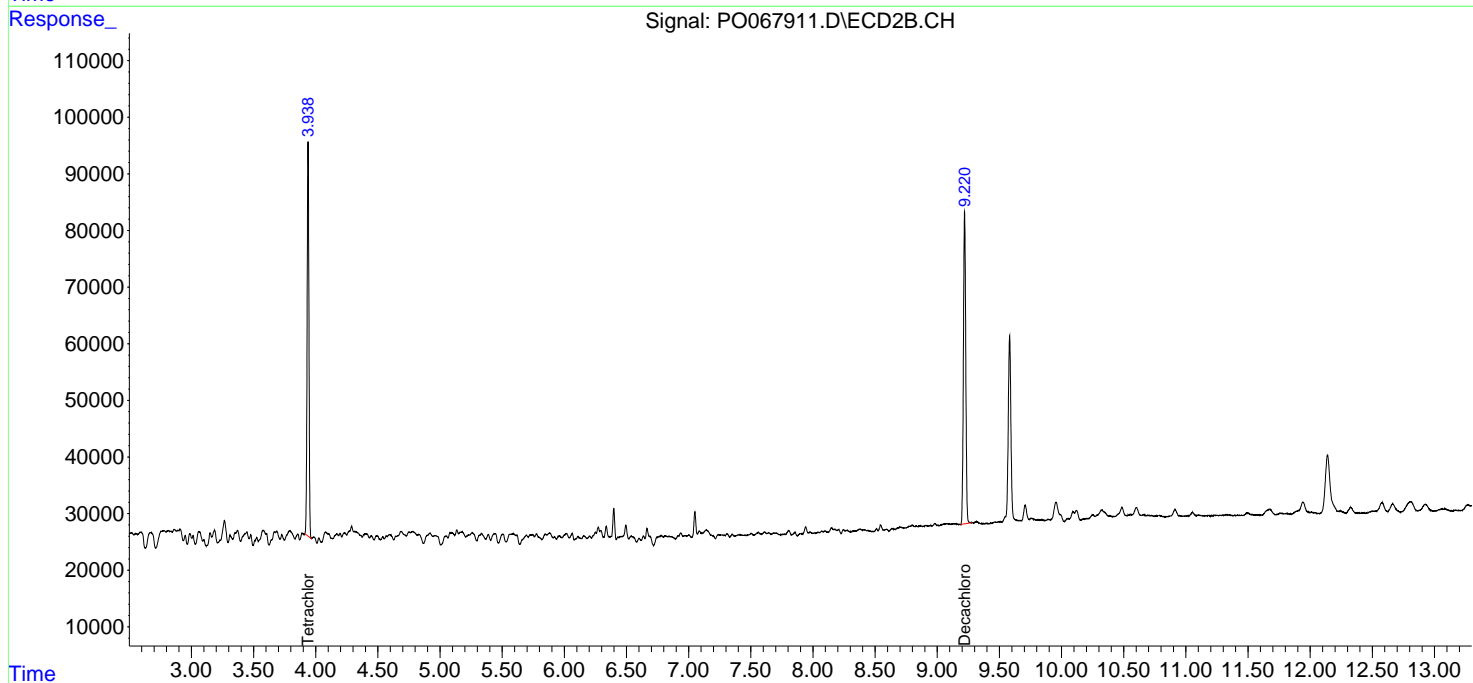
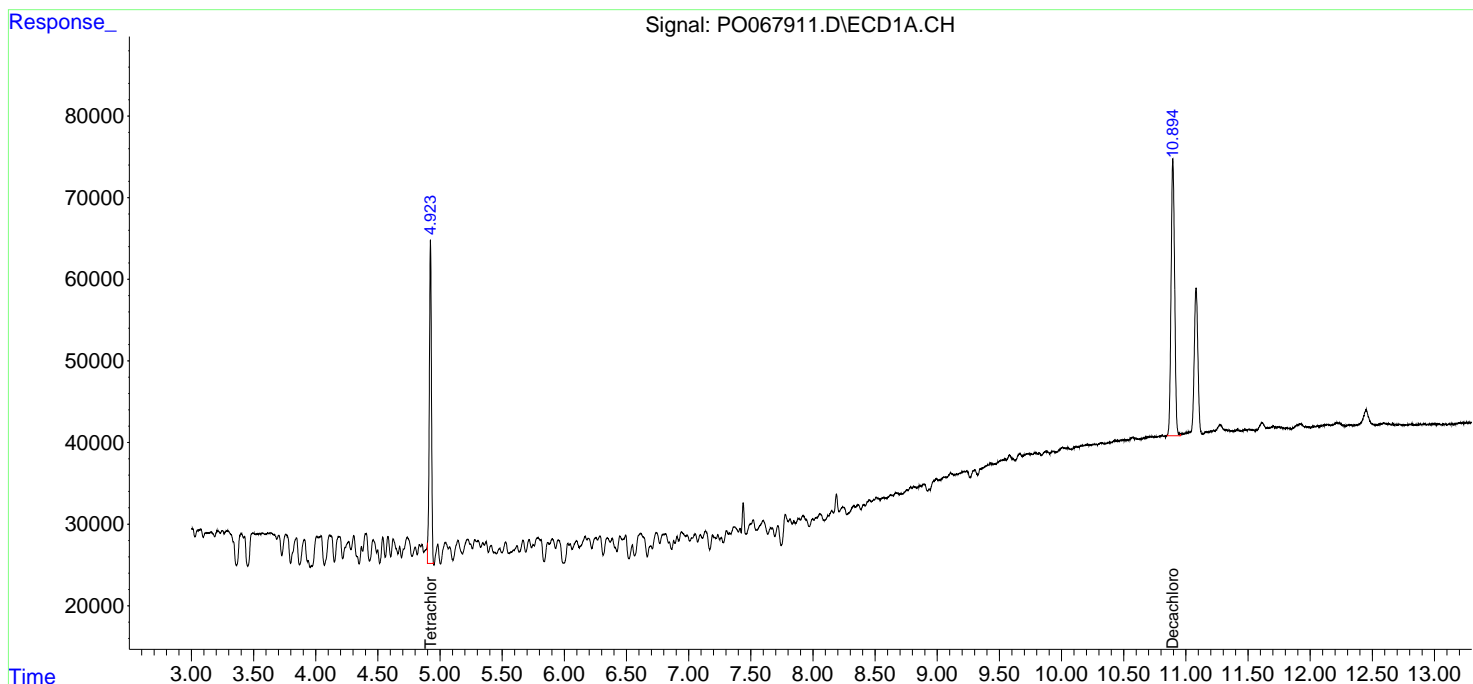
Data Path : Z:\pestpcbsrv\HPCHEM1\ECD\_O\Data\P0041720\  
 Data File : P0067911.D  
 Signal(s) : Signal #1: ECD1A.CH Signal #2: ECD2B.CH  
 Acq On : 17 Apr 2020 16:58  
 Operator : DD\AJ  
 Sample : L2323-05  
 Misc :  
 ALS Vial : 17 Sample Multiplier: 1

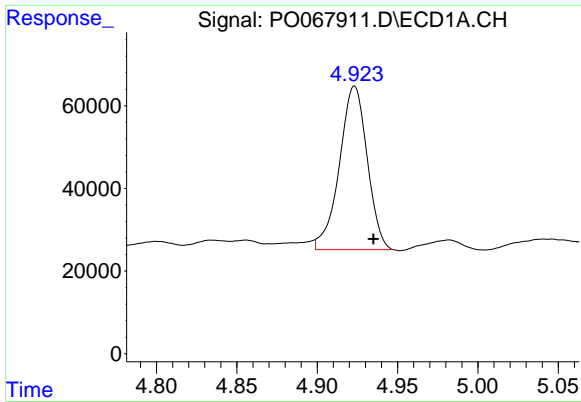
**Instrument :**  
 ECD\_O  
**ClientSampled :**  
 TP-20-COMP

**Manual Integrations**  
**APPROVED**  
 Sohil  
 4/20/2020 1:58:03 PM

Integration File signal 1: autoint1.e  
 Integration File signal 2: autoint2.e  
 Quant Time: Apr 17 17:59:45 2020  
 Quant Method : Z:\pestpcbsrv\HPCHEM1\ECD\_O\methods\P0040120.M  
 Quant Title : GC EXTRACTABLES  
 QLast Update : Fri Apr 03 16:04:09 2020  
 Response via : Initial Calibration  
 Integrator: ChemStation 6890 Scale Mode: Small noise peaks clipped

Volume Inj. : 2 µl  
 Signal #1 Phase : ZB-MR1 Signal #2 Phase: ZB-MR2  
 Signal #1 Info : 30Mx0.32mmx 0.50µ Signal #2 Info : 30M x 0.32mm x 0.25µm





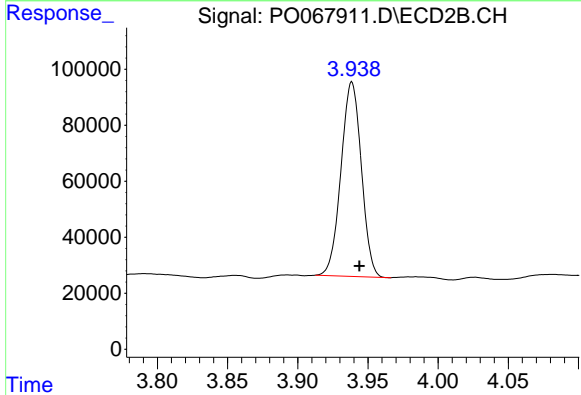
#1 Tetrachloro-m-xylene

R.T.: 4.923 min  
 Delta R.T.: -0.012 min  
 Response: 476815  
 Conc: 20.02 ng/ml m

Instrument :  
 ECD\_O  
 ClientSampled :  
 TP-20-COMP

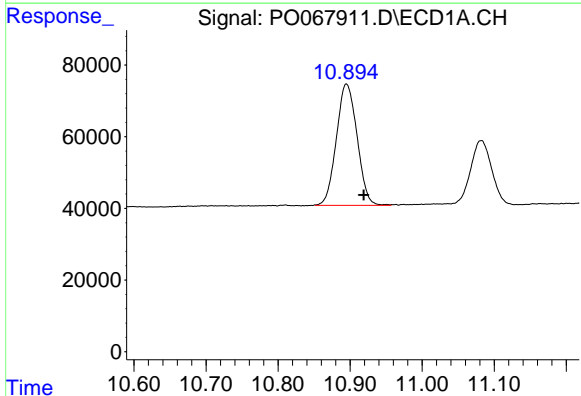
Manual Integrations  
 APPROVED

Sohil  
 4/20/2020 1:58:03 PM



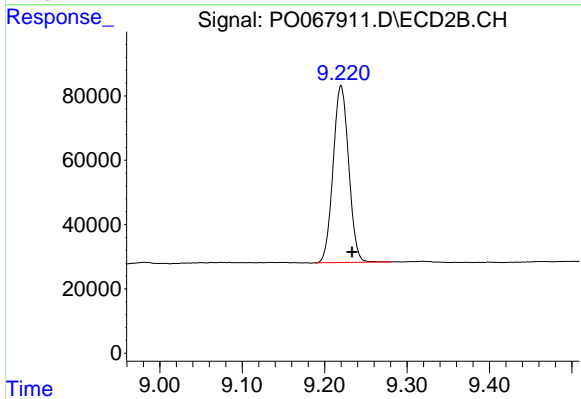
#1 Tetrachloro-m-xylene

R.T.: 3.939 min  
 Delta R.T.: -0.005 min  
 Response: 701886  
 Conc: 20.94 ng/ml



#2 Decachlorobiphenyl

R.T.: 10.894 min  
 Delta R.T.: -0.024 min  
 Response: 676691  
 Conc: 19.88 ng/ml m



#2 Decachlorobiphenyl

R.T.: 9.220 min  
 Delta R.T.: -0.013 min  
 Response: 722325  
 Conc: 17.47 ng/ml