

Data Path : Z:\pestpcbsrv\HPCHEM1\ECD\_0\Data\P0041919\  
 Data File : P0055476.D  
 Signal(s) : Signal #1: ECD1A.CH Signal #2: ECD2B.CH  
 Acq On : 19 Apr 2019 18:59  
 Operator : SM/SJ  
 Sample : K2483-01  
 Misc :  
 ALS Vial : 9 Sample Multiplier: 1

Instrument :  
 ECD\_0  
 ClientSampled :  
 30134-39

Integration File signal 1: autoint1.e  
 Integration File signal 2: autoint2.e  
 Quant Time: Apr 19 22:55:19 2019  
 Quant Method : Z:\pestpcbsrv\HPCHEM1\ECD\_0\methods\P0032519.M  
 Quant Title : GC EXTRACTABLES  
 QLast Update : Mon Mar 25 17:22:26 2019  
 Response via : Initial Calibration  
 Integrator: ChemStation 6890 Scale Mode: Small noise peaks clipped

Volume Inj. : 2 µl  
 Signal #1 Phase : ZB-MR1 Signal #2 Phase: ZB-MR2  
 Signal #1 Info : 30Mx0.32mmx 0.50µ Signal #2 Info : 30M x 0.32mm x 0.25µm

Compound	RT#1	RT#2	Resp#1	Resp#2	ng/ml	ng/ml
-----						
System Monitoring Compounds						
1) SA Tetrachlo...	4.291	3.631	698781	78603	20.135	2.463 #
2) SA Decachlor...	9.906	8.566	748549	542799	15.184	17.043
Target Compounds						
7) L1 AR-1016-5	5.935	5.142	26732	65500	20.035	50.254 #
8) L2 AR-1221-1	4.537	3.902	11941	13521	27.353	34.776 #
9) L2 AR-1221-2	4.596	3.902	18343	13521	54.089	45.100
10) L2 AR-1221-3	0.000	4.018	0	12661	N.D.	13.735 #
11) L3 AR-1232-1	0.000	4.018	0	12661	N.D.	16.883 #
15) L3 AR-1232-5	0.000	5.142	0	65500	N.D.	134.675 #
20) L4 AR-1242-5	6.361	5.435	30889	47724	25.588	38.804 #
23) L5 AR-1248-3	5.935	0.000	26732	0	16.737	N.D. #
24) L5 AR-1248-4	6.332	5.142	36956	65500	19.673	43.008 #
25) L5 AR-1248-5	6.361	0.000	30889	0	17.230	N.D. #
26) L6 AR-1254-1	6.303	5.435	11751	47724	6.481	21.837 #
27) L6 AR-1254-2	6.528	5.681	71272	38367	24.966	19.787
28) L6 AR-1254-3	6.895	6.045	33079	34724	10.519	10.832
29) L6 AR-1254-4	7.176	6.271	12603	15270	5.152	7.799 #
31) L7 AR-1260-1	0.000	6.180	0	10968	N.D.	4.773 #
32) L7 AR-1260-2	7.291	6.334	37416	9227	12.056	3.352 #
33) L7 AR-1260-3	7.726	6.526	9902	99892	4.034	38.749 #
34) L7 AR-1260-4	7.876	6.972	25152	7000	9.093	3.289 #
35) L7 AR-1260-5	8.191	7.201	63044	14396	11.362	3.006 #
36) L8 AR-1262-1	7.726	0.000	9902	0	2.972	N.D. #
37) L8 AR-1262-2	8.191	7.201	63044	14396	10.641	2.937 #
38) L8 AR-1262-3	8.511	7.542	15042	9169	3.631	4.465
39) L8 AR-1262-4	0.000	7.542	0	9169	N.D.	2.531 #
40) L8 AR-1262-5	0.000	8.025	0	91332	N.D.	56.592 #
41) L9 AR-1268-1	8.511	7.542	15042	9169	2.113	1.622
42) L9 AR-1268-2	0.000	7.542	0	9169	N.D.	1.773 #
43) L9 AR-1268-3	0.000	7.778	0	61744	N.D.	14.348 #
44) L9 AR-1268-4	0.000	8.025	0	91332	N.D.	49.266 #
45) L9 AR-1268-5	0.000	8.318	0	5341	N.D.	0.469 #

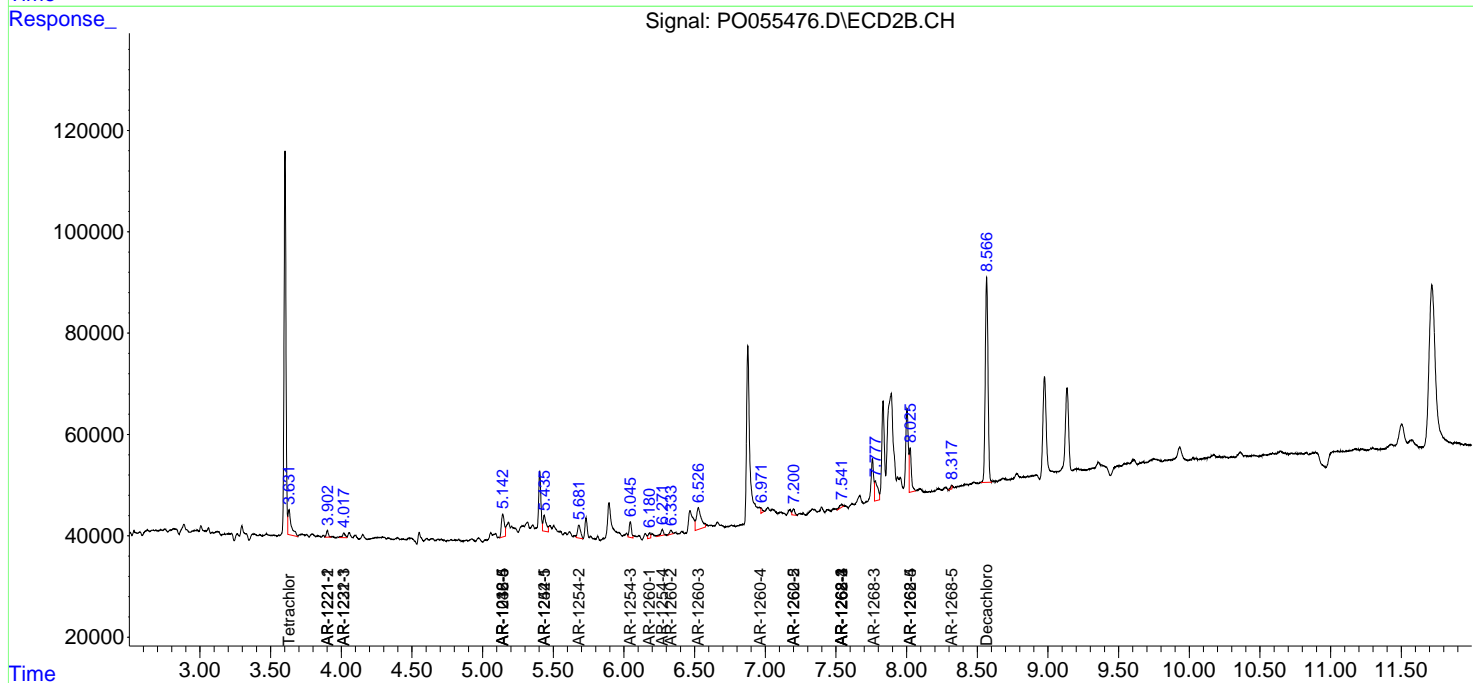
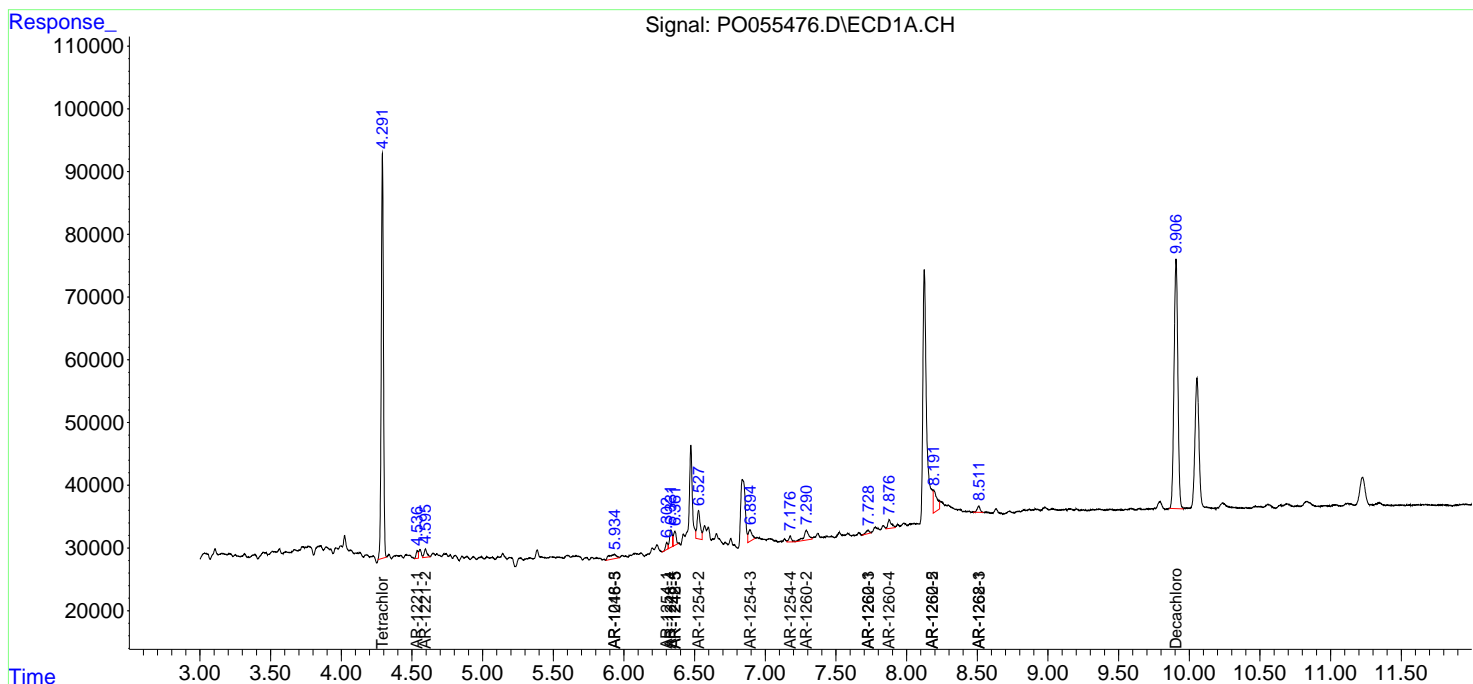
(f)=RT Delta > 1/2 Window (#)=Amounts differ by > 25% (m)=manual int.

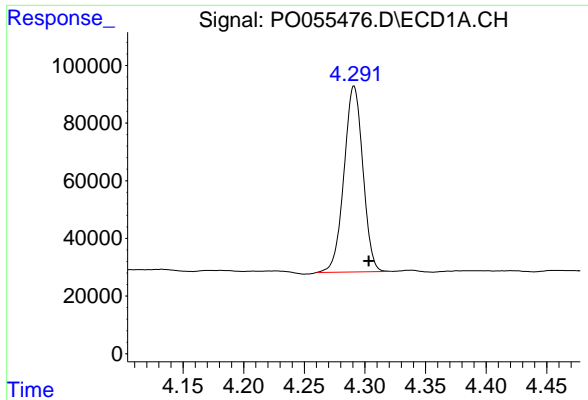
Data Path : Z:\pestpcbsrv\HPCHEM1\ECD\_0\Data\P0041919\  
 Data File : P0055476.D  
 Signal(s) : Signal #1: ECD1A.CH Signal #2: ECD2B.CH  
 Acq On : 19 Apr 2019 18:59  
 Operator : SM/SJ  
 Sample : K2483-01  
 Misc :  
 ALS Vial : 9 Sample Multiplier: 1

Instrument :  
 ECD\_O  
 ClientSampled :  
 30134-39

Integration File signal 1: autoint1.e  
 Integration File signal 2: autoint2.e  
 Quant Time: Apr 19 22:55:19 2019  
 Quant Method : Z:\pestpcbsrv\HPCHEM1\ECD\_0\methods\P0032519.M  
 Quant Title : GC EXTRACTABLES  
 QLast Update : Mon Mar 25 17:22:26 2019  
 Response via : Initial Calibration  
 Integrator: ChemStation 6890 Scale Mode: Small noise peaks clipped

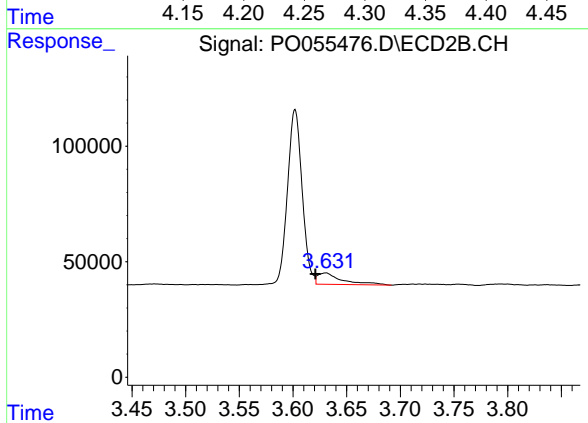
Volume Inj. : 2 µl  
 Signal #1 Phase : ZB-MR1 Signal #2 Phase: ZB-MR2  
 Signal #1 Info : 30Mx0.32mmx 0.50µ Signal #2 Info : 30M x 0.32mm x 0.25µm



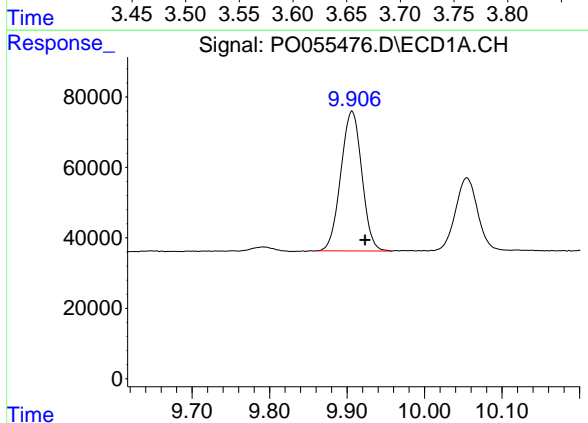


#1 Tetrachloro-m-xylene  
 R.T.: 4.291 min  
 Delta R.T.: -0.012 min  
 Response: 698781  
 Conc: 20.13 ng/ml

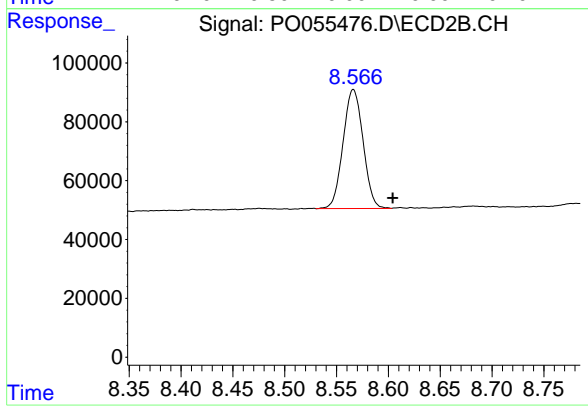
Instrument :  
 ECD\_O  
 ClientSampleId :  
 30134-39



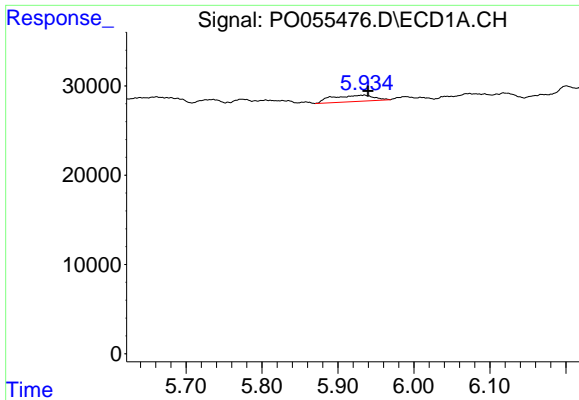
#1 Tetrachloro-m-xylene  
 R.T.: 3.631 min  
 Delta R.T.: 0.010 min  
 Response: 78603  
 Conc: 2.46 ng/ml



#2 Decachlorobiphenyl  
 R.T.: 9.906 min  
 Delta R.T.: -0.017 min  
 Response: 748549  
 Conc: 15.18 ng/ml



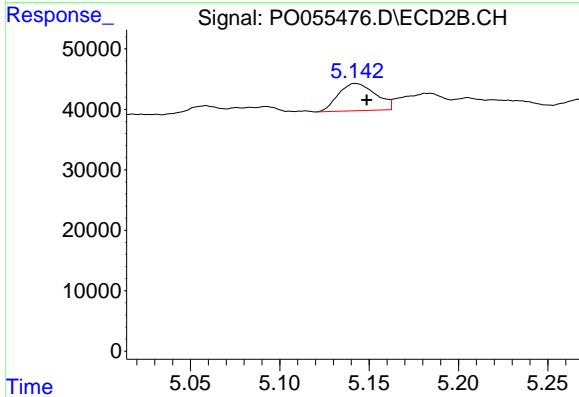
#2 Decachlorobiphenyl  
 R.T.: 8.566 min  
 Delta R.T.: -0.038 min  
 Response: 542799  
 Conc: 17.04 ng/ml



#7 AR-1016-5

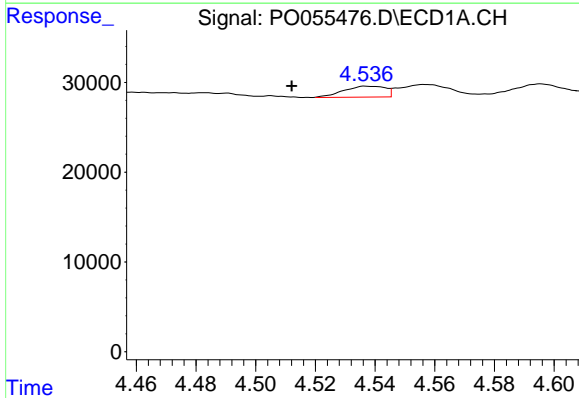
R.T.: 5.935 min  
 Delta R.T.: -0.005 min  
 Response: 26732  
 Conc: 20.04 ng/ml

Instrument :  
 ECD\_O  
 ClientSampleId :  
 30134-39



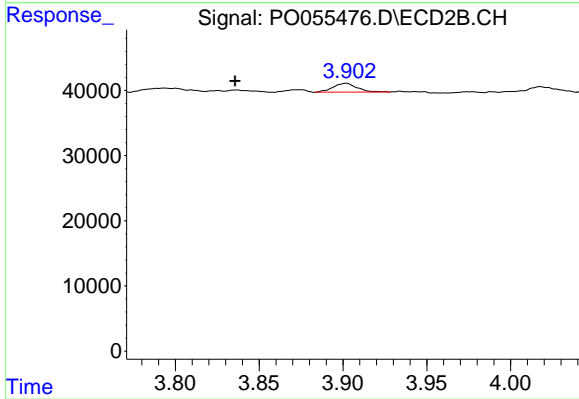
#7 AR-1016-5

R.T.: 5.142 min  
 Delta R.T.: -0.007 min  
 Response: 65500  
 Conc: 50.25 ng/ml



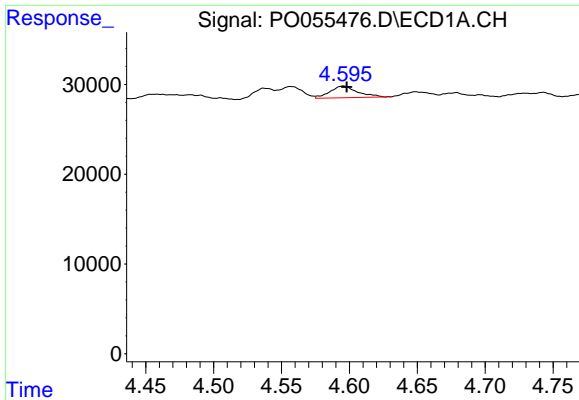
#8 AR-1221-1

R.T.: 4.537 min  
 Delta R.T.: 0.025 min  
 Response: 11941  
 Conc: 27.35 ng/ml



#8 AR-1221-1

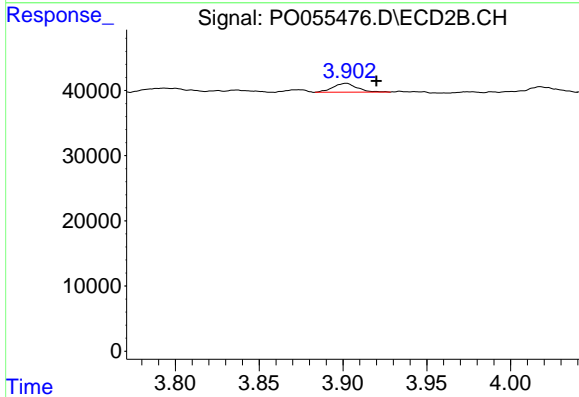
R.T.: 3.902 min  
 Delta R.T.: 0.067 min  
 Response: 13521  
 Conc: 34.78 ng/ml



#9 AR-1221-2

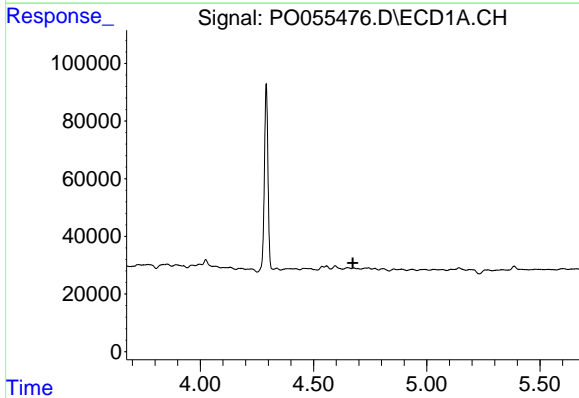
R.T.: 4.596 min  
 Delta R.T.: -0.002 min  
 Response: 18343  
 Conc: 54.09 ng/ml

Instrument :  
 ECD\_O  
 ClientSampled :  
 30134-39



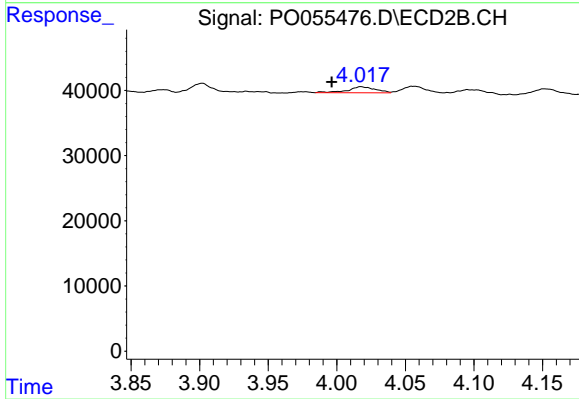
#9 AR-1221-2

R.T.: 3.902 min  
 Delta R.T.: -0.018 min  
 Response: 13521  
 Conc: 45.10 ng/ml



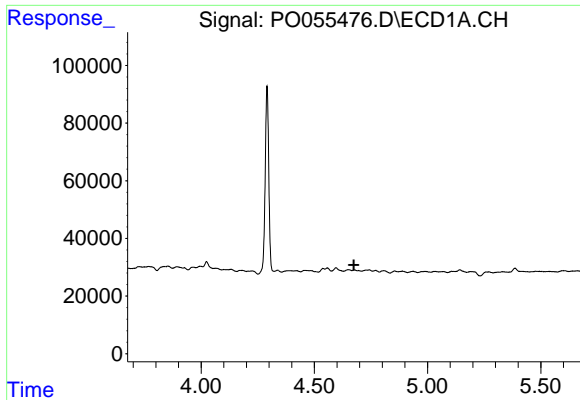
#10 AR-1221-3

R.T.: 0.000 min  
 Exp R.T. : 4.673 min  
 Response: 0  
 Conc: N.D.



#10 AR-1221-3

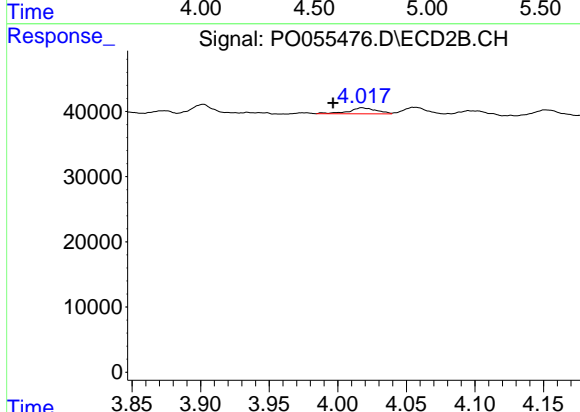
R.T.: 4.018 min  
 Delta R.T.: 0.021 min  
 Response: 12661  
 Conc: 13.73 ng/ml



#11 AR-1232-1

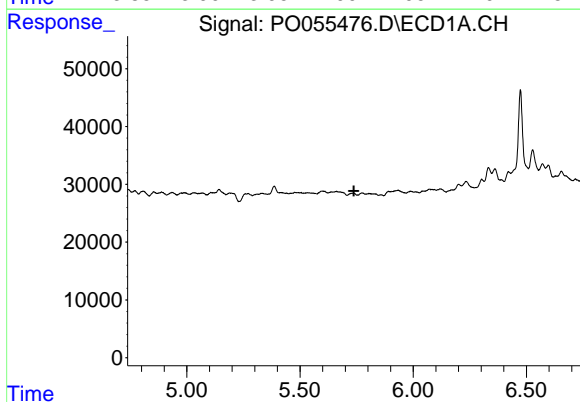
R.T.: 0.000 min  
 Exp R.T. : 4.675 min  
 Response: 0  
 Conc: N.D.

Instrument :  
 ECD\_O  
 ClientSampled :  
 30134-39



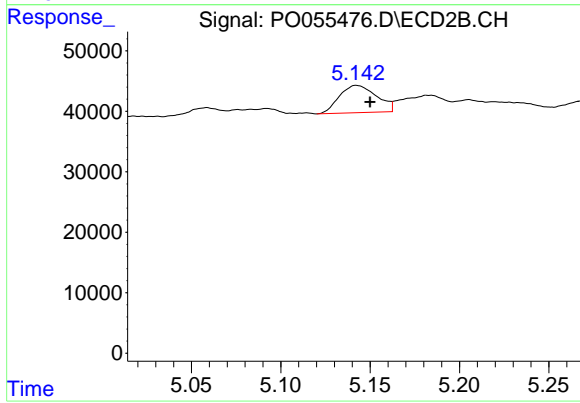
#11 AR-1232-1

R.T.: 4.018 min  
 Delta R.T.: 0.021 min  
 Response: 12661  
 Conc: 16.88 ng/ml



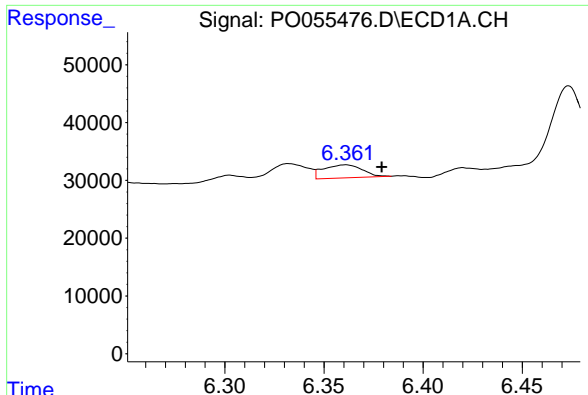
#15 AR-1232-5

R.T.: 0.000 min  
 Exp R.T. : 5.738 min  
 Response: 0  
 Conc: N.D.



#15 AR-1232-5

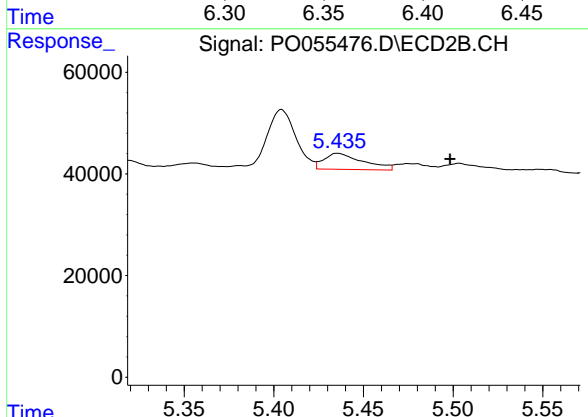
R.T.: 5.142 min  
 Delta R.T.: -0.008 min  
 Response: 65500  
 Conc: 134.67 ng/ml



#20 AR-1242-5

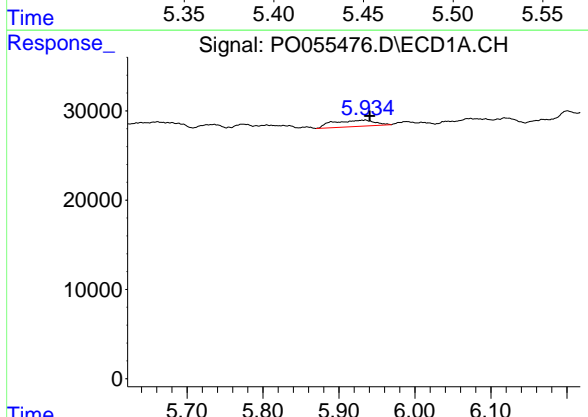
R.T.: 6.361 min  
 Delta R.T.: -0.018 min  
 Response: 30889  
 Conc: 25.59 ng/ml

Instrument :  
 ECD\_O  
 ClientSampleId :  
 30134-39



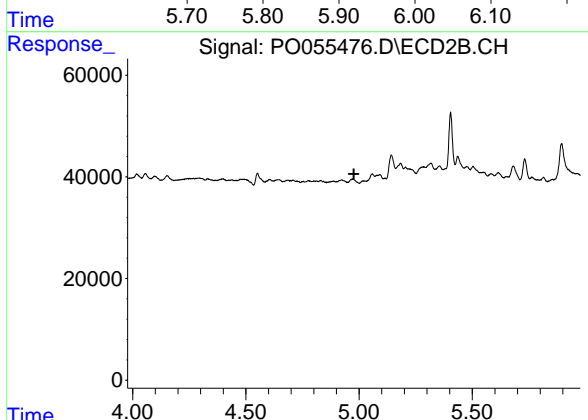
#20 AR-1242-5

R.T.: 5.435 min  
 Delta R.T.: -0.063 min  
 Response: 47724  
 Conc: 38.80 ng/ml



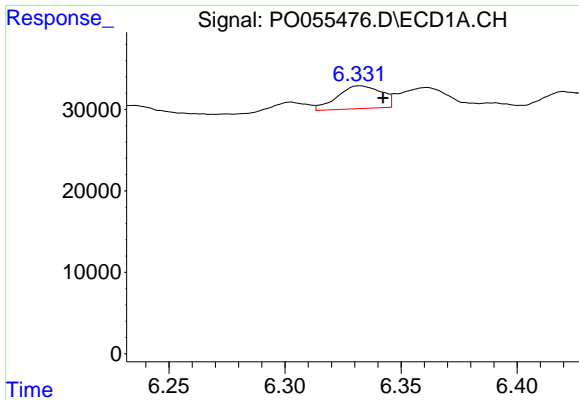
#23 AR-1248-3

R.T.: 5.935 min  
 Delta R.T.: -0.006 min  
 Response: 26732  
 Conc: 16.74 ng/ml



#23 AR-1248-3

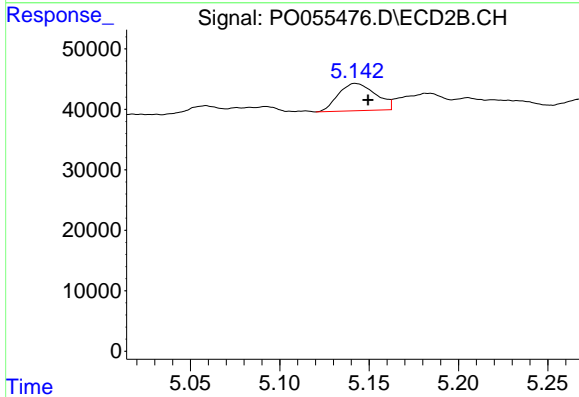
R.T.: 0.000 min  
 Exp R.T. : 4.977 min  
 Response: 0  
 Conc: N.D.



#24 AR-1248-4

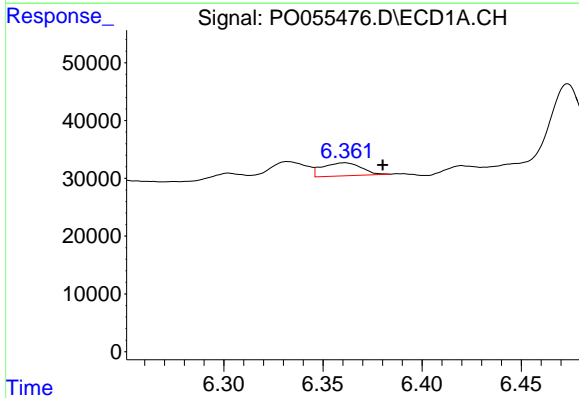
R.T.: 6.332 min  
 Delta R.T.: -0.010 min  
 Response: 36956  
 Conc: 19.67 ng/ml

Instrument :  
 ECD\_O  
 ClientSampleId :  
 30134-39



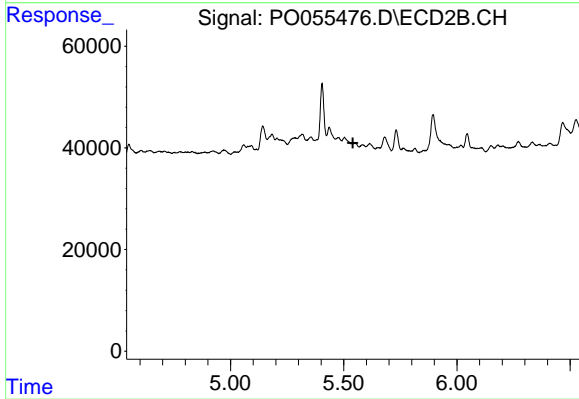
#24 AR-1248-4

R.T.: 5.142 min  
 Delta R.T.: -0.007 min  
 Response: 65500  
 Conc: 43.01 ng/ml



#25 AR-1248-5

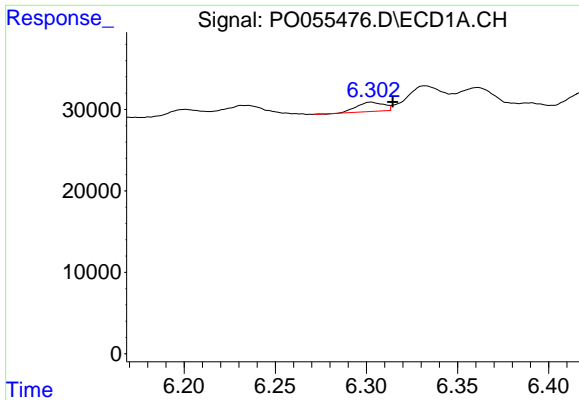
R.T.: 6.361 min  
 Delta R.T.: -0.019 min  
 Response: 30889  
 Conc: 17.23 ng/ml



#25 AR-1248-5

R.T.: 0.000 min  
 Exp R.T. : 5.540 min  
 Response: 0  
 Conc: N.D.

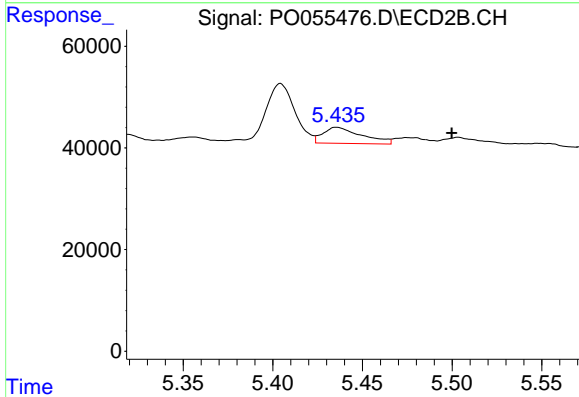




#26 AR-1254-1

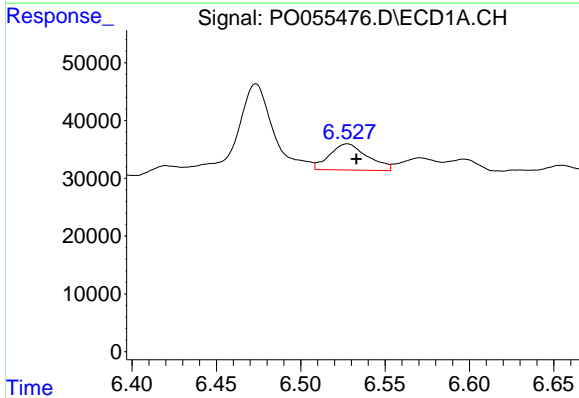
R.T.: 6.303 min  
 Delta R.T.: -0.012 min  
 Response: 11751  
 Conc: 6.48 ng/ml

**Instrument :**  
 ECD\_O  
**ClientSampled :**  
 30134-39



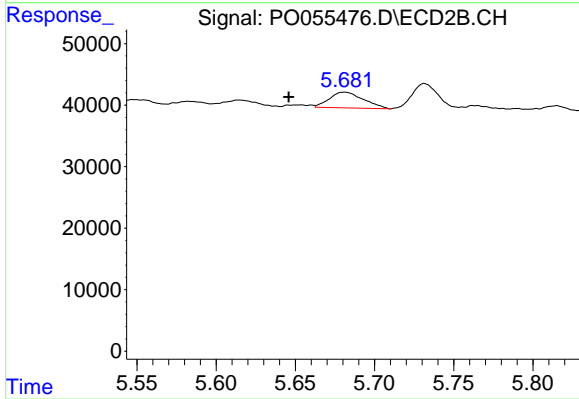
#26 AR-1254-1

R.T.: 5.435 min  
 Delta R.T.: -0.064 min  
 Response: 47724  
 Conc: 21.84 ng/ml



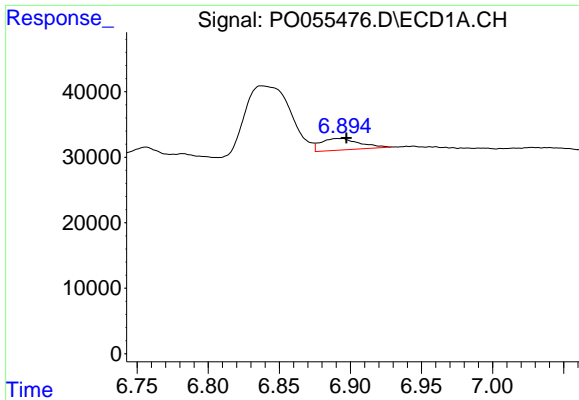
#27 AR-1254-2

R.T.: 6.528 min  
 Delta R.T.: -0.005 min  
 Response: 71272  
 Conc: 24.97 ng/ml



#27 AR-1254-2

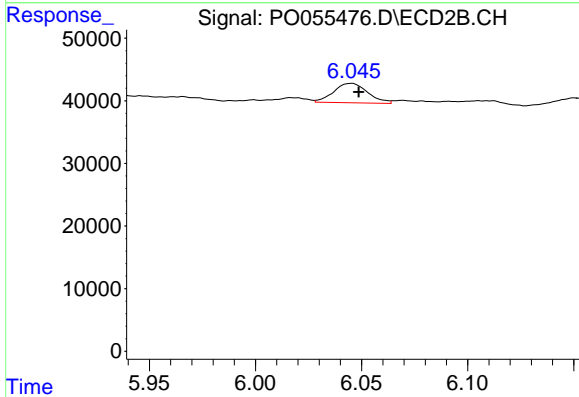
R.T.: 5.681 min  
 Delta R.T.: 0.036 min  
 Response: 38367  
 Conc: 19.79 ng/ml



#28 AR-1254-3

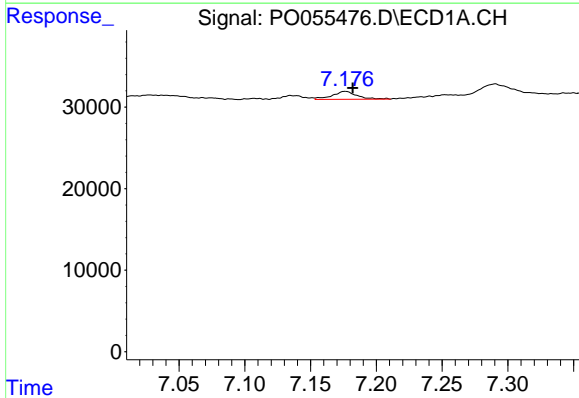
R.T.: 6.895 min  
 Delta R.T.: -0.002 min  
 Response: 33079  
 Conc: 10.52 ng/ml

Instrument :  
 ECD\_O  
 ClientSampleId :  
 30134-39



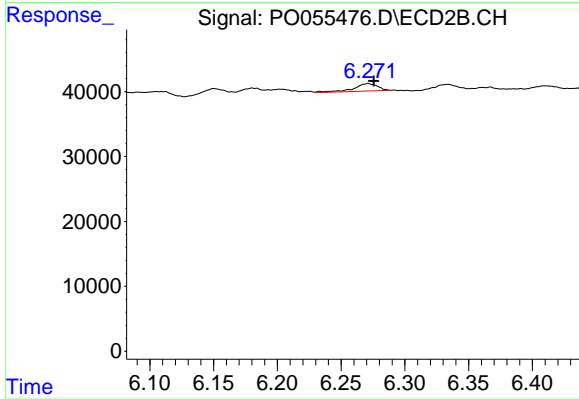
#28 AR-1254-3

R.T.: 6.045 min  
 Delta R.T.: -0.003 min  
 Response: 34724  
 Conc: 10.83 ng/ml



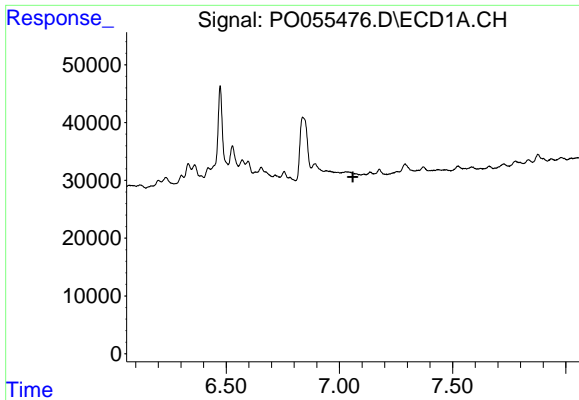
#29 AR-1254-4

R.T.: 7.176 min  
 Delta R.T.: -0.006 min  
 Response: 12603  
 Conc: 5.15 ng/ml



#29 AR-1254-4

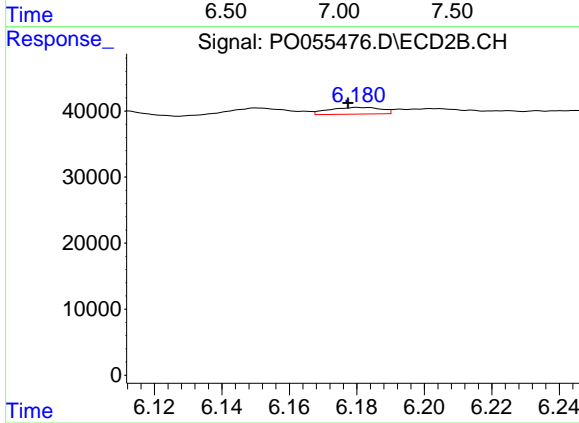
R.T.: 6.271 min  
 Delta R.T.: -0.004 min  
 Response: 15270  
 Conc: 7.80 ng/ml



#31 AR-1260-1

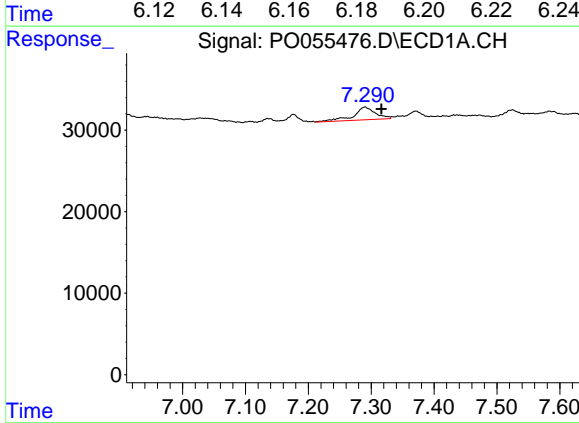
R.T.: 0.000 min  
 Exp R.T.: 7.060 min  
 Response: 0  
 Conc: N.D.

Instrument :  
 ECD\_O  
 ClientSampled :  
 30134-39



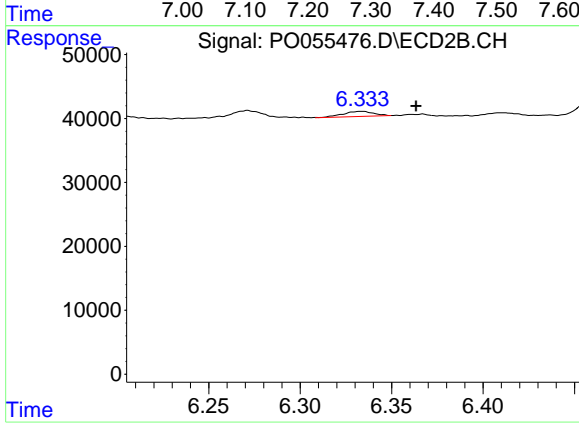
#31 AR-1260-1

R.T.: 6.180 min  
 Delta R.T.: 0.003 min  
 Response: 10968  
 Conc: 4.77 ng/ml



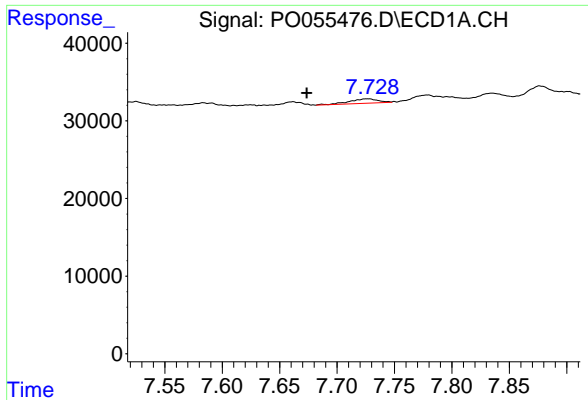
#32 AR-1260-2

R.T.: 7.291 min  
 Delta R.T.: -0.026 min  
 Response: 37416  
 Conc: 12.06 ng/ml



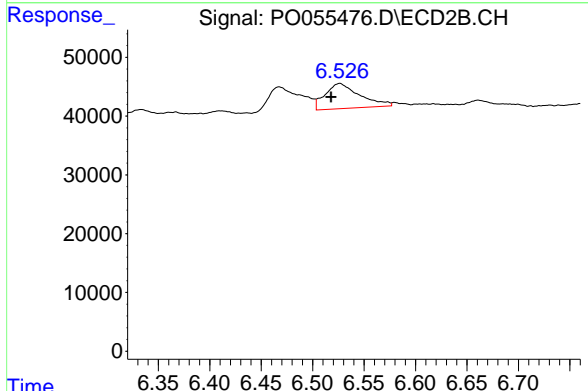
#32 AR-1260-2

R.T.: 6.334 min  
 Delta R.T.: -0.030 min  
 Response: 9227  
 Conc: 3.35 ng/ml

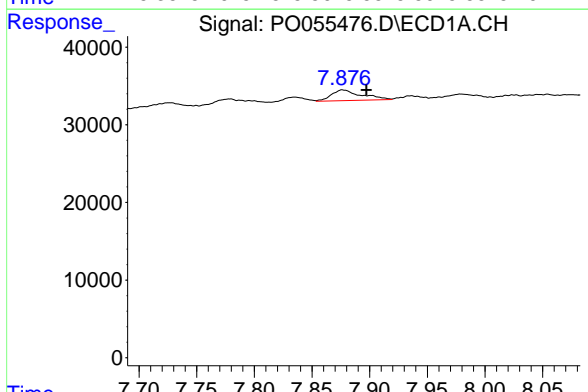


#33 AR-1260-3  
 R.T.: 7.726 min  
 Delta R.T.: 0.052 min  
 Response: 9902  
 Conc: 4.03 ng/ml

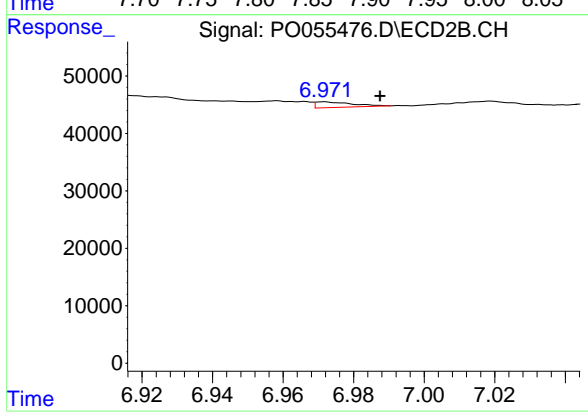
Instrument :  
 ECD\_O  
 ClientSampleId :  
 30134-39



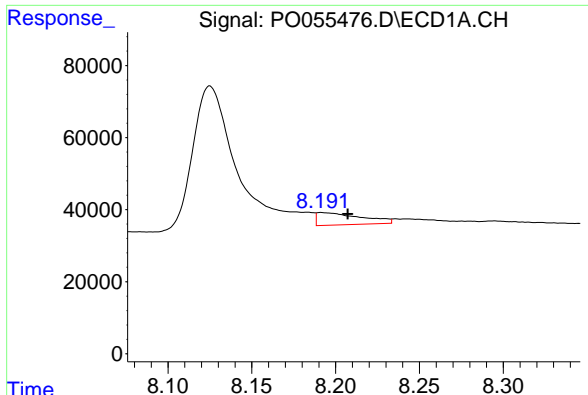
#33 AR-1260-3  
 R.T.: 6.526 min  
 Delta R.T.: 0.009 min  
 Response: 99892  
 Conc: 38.75 ng/ml



#34 AR-1260-4  
 R.T.: 7.876 min  
 Delta R.T.: -0.021 min  
 Response: 25152  
 Conc: 9.09 ng/ml



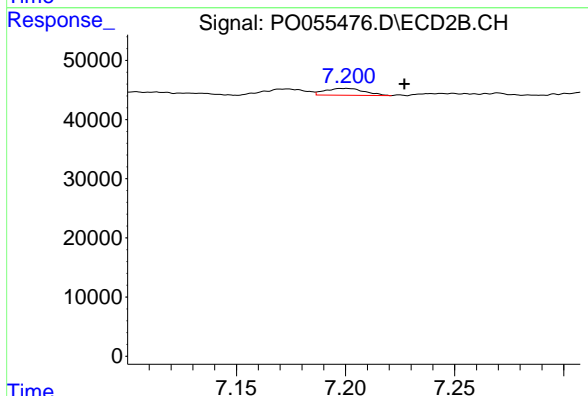
#34 AR-1260-4  
 R.T.: 6.972 min  
 Delta R.T.: -0.016 min  
 Response: 7000  
 Conc: 3.29 ng/ml



#35 AR-1260-5

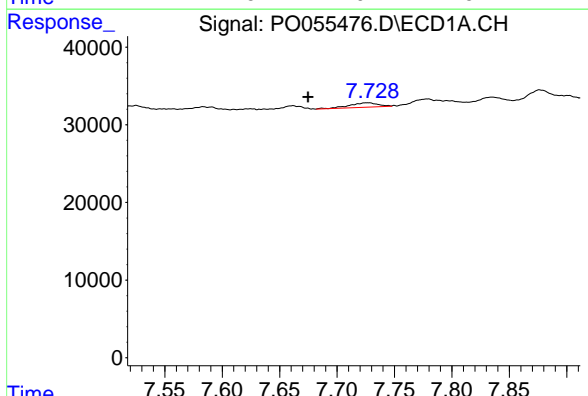
R.T.: 8.191 min  
 Delta R.T.: -0.016 min  
 Response: 63044  
 Conc: 11.36 ng/ml

Instrument :  
 ECD\_O  
 ClientSampleId :  
 30134-39



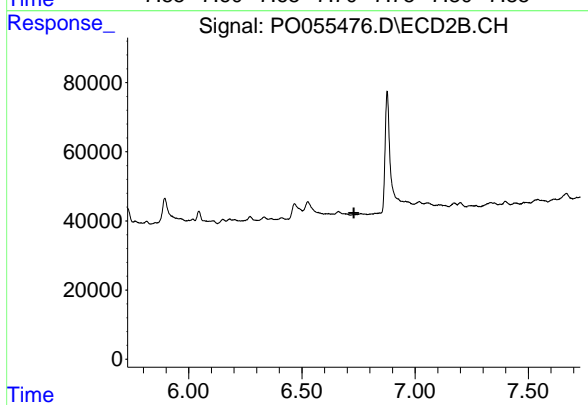
#35 AR-1260-5

R.T.: 7.201 min  
 Delta R.T.: -0.026 min  
 Response: 14396  
 Conc: 3.01 ng/ml



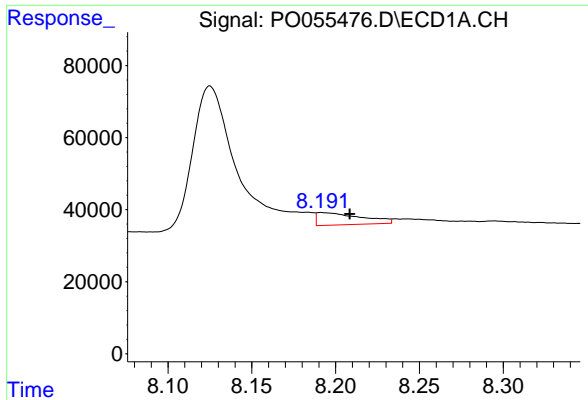
#36 AR-1262-1

R.T.: 7.726 min  
 Delta R.T.: 0.051 min  
 Response: 9902  
 Conc: 2.97 ng/ml



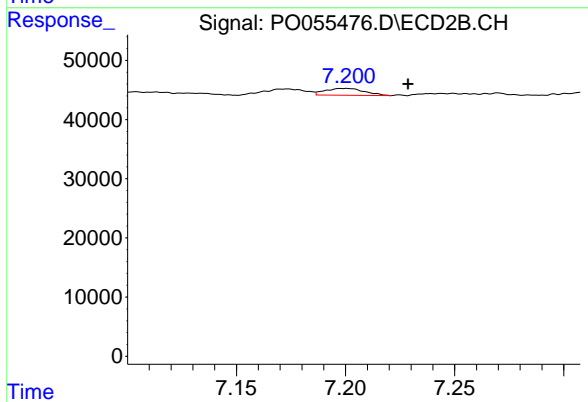
#36 AR-1262-1

R.T.: 0.000 min  
 Exp R.T. : 6.730 min  
 Response: 0  
 Conc: N.D.

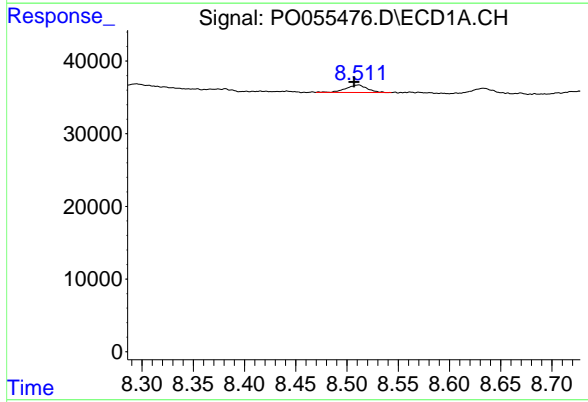


#37 AR-1262-2  
 R.T.: 8.191 min  
 Delta R.T.: -0.017 min  
 Response: 63044  
 Conc: 10.64 ng/ml

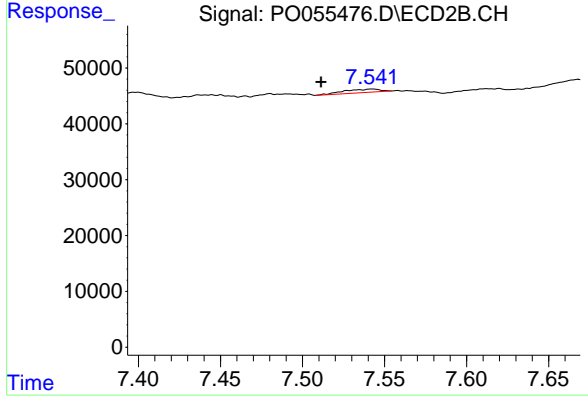
Instrument :  
 ECD\_O  
 ClientSampleId :  
 30134-39



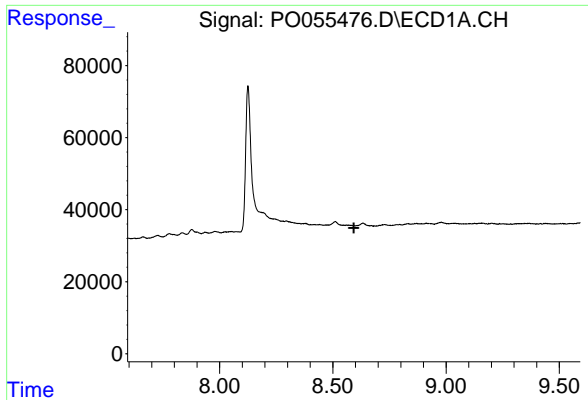
#37 AR-1262-2  
 R.T.: 7.201 min  
 Delta R.T.: -0.028 min  
 Response: 14396  
 Conc: 2.94 ng/ml



#38 AR-1262-3  
 R.T.: 8.511 min  
 Delta R.T.: 0.005 min  
 Response: 15042  
 Conc: 3.63 ng/ml



#38 AR-1262-3  
 R.T.: 7.542 min  
 Delta R.T.: 0.031 min  
 Response: 9169  
 Conc: 4.47 ng/ml

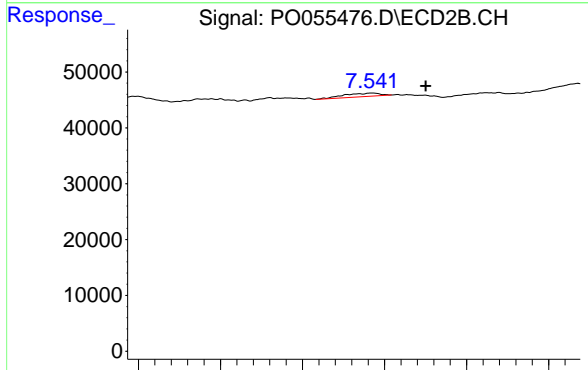


#39 AR-1262-4

R.T.: 0.000 min  
 Exp R.T.: 8.593 min  
 Response: 0  
 Conc: N.D.

Instrument :  
 ECD\_O  
 ClientSampleId :  
 30134-39

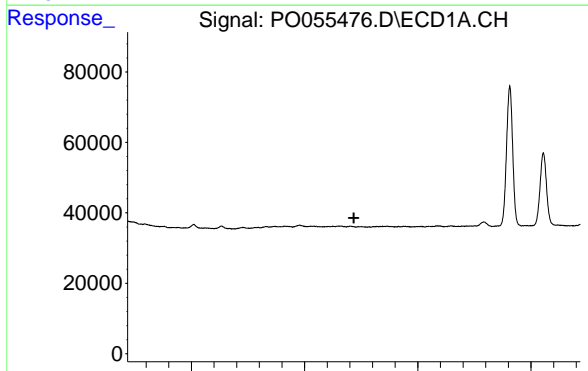
Time



#39 AR-1262-4

R.T.: 7.542 min  
 Delta R.T.: -0.033 min  
 Response: 9169  
 Conc: 2.53 ng/ml

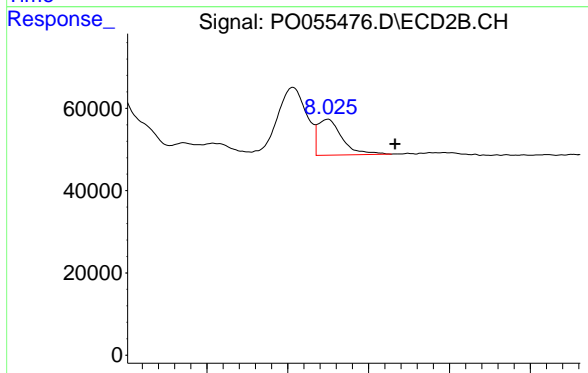
Time



#40 AR-1262-5

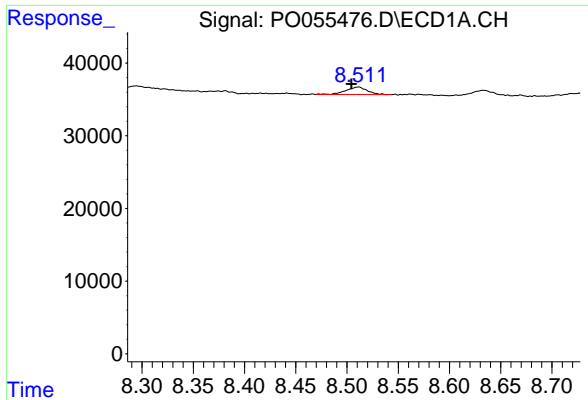
R.T.: 0.000 min  
 Exp R.T.: 9.218 min  
 Response: 0  
 Conc: N.D.

Time



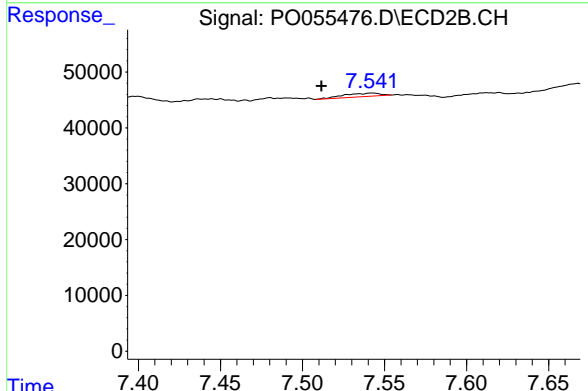
#40 AR-1262-5

R.T.: 8.025 min  
 Delta R.T.: -0.041 min  
 Response: 91332  
 Conc: 56.59 ng/ml

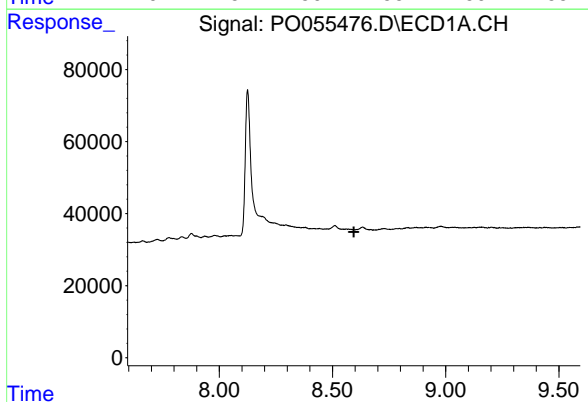


#41 AR-1268-1  
 R.T.: 8.511 min  
 Delta R.T.: 0.007 min  
 Response: 15042  
 Conc: 2.11 ng/ml

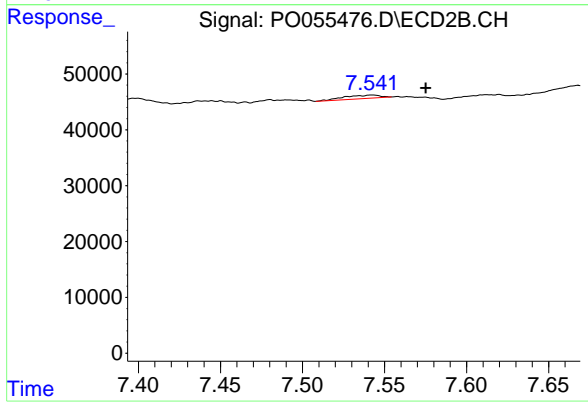
Instrument :  
 ECD\_O  
 ClientSampled :  
 30134-39



#41 AR-1268-1  
 R.T.: 7.542 min  
 Delta R.T.: 0.031 min  
 Response: 9169  
 Conc: 1.62 ng/ml

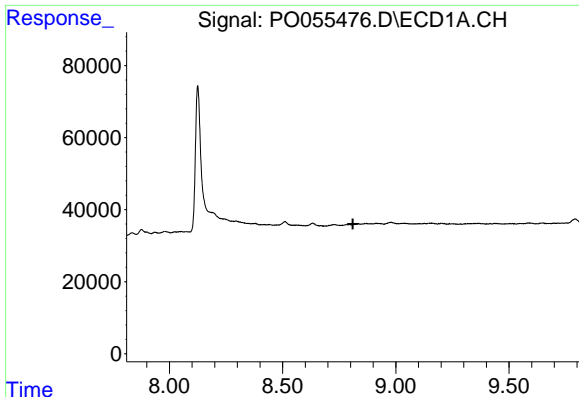


#42 AR-1268-2  
 R.T.: 0.000 min  
 Exp R.T. : 8.594 min  
 Response: 0  
 Conc: N.D.



#42 AR-1268-2  
 R.T.: 7.542 min  
 Delta R.T.: -0.033 min  
 Response: 9169  
 Conc: 1.77 ng/ml

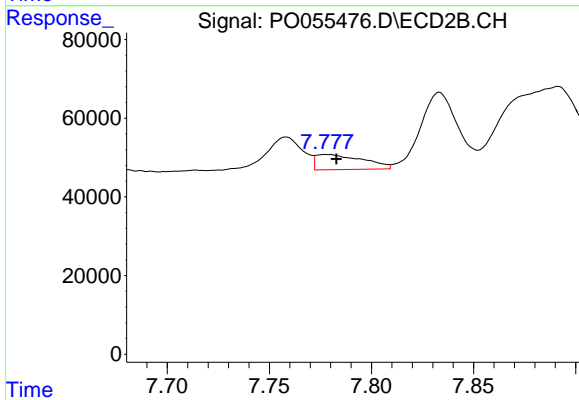




#43 AR-1268-3

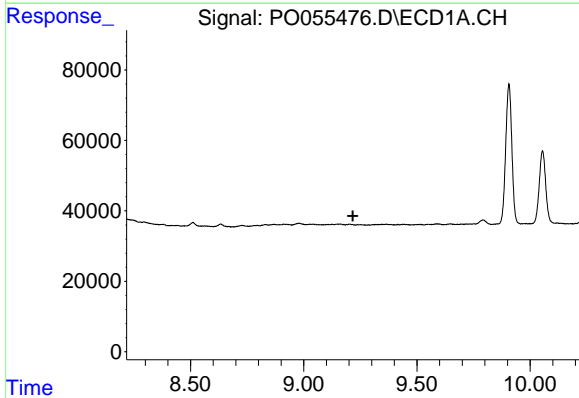
R.T.: 0.000 min  
 Exp R.T. : 8.810 min  
 Response: 0  
 Conc: N.D.

Instrument :  
 ECD\_O  
 ClientSampleId :  
 30134-39



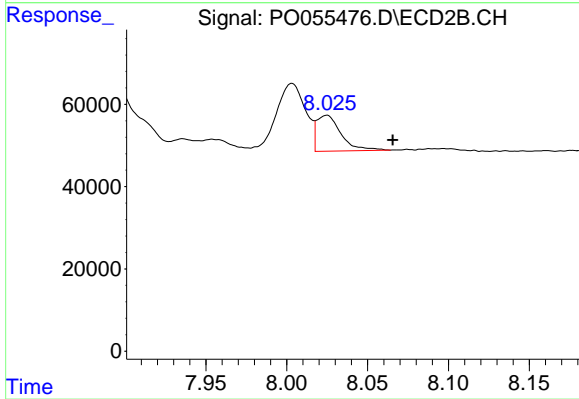
#43 AR-1268-3

R.T.: 7.778 min  
 Delta R.T.: -0.005 min  
 Response: 61744  
 Conc: 14.35 ng/ml



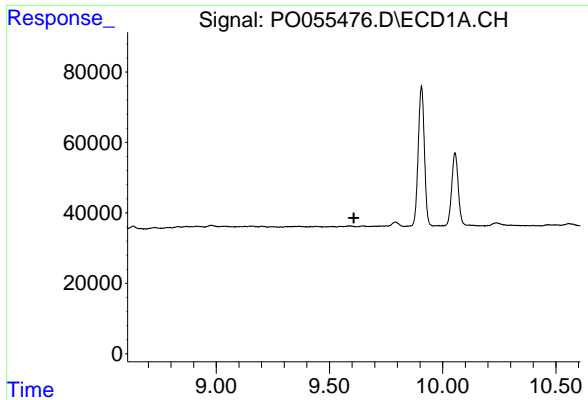
#44 AR-1268-4

R.T.: 0.000 min  
 Exp R.T. : 9.217 min  
 Response: 0  
 Conc: N.D.



#44 AR-1268-4

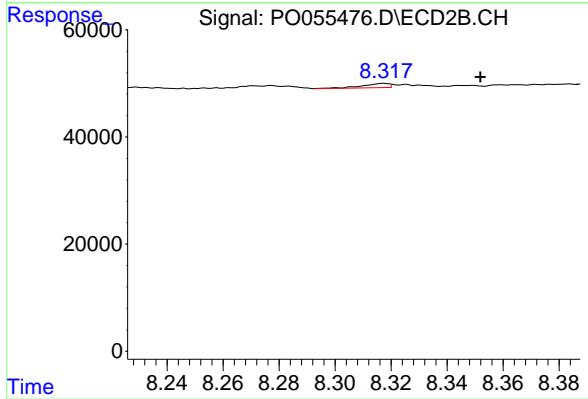
R.T.: 8.025 min  
 Delta R.T.: -0.040 min  
 Response: 91332  
 Conc: 49.27 ng/ml



#45 AR-1268-5

R.T.: 0.000 min  
Exp R.T.: 9.608 min  
Response: 0  
Conc: N.D.

Instrument :  
ECD\_O  
ClientSampleId :  
30134-39



#45 AR-1268-5

R.T.: 8.318 min  
Delta R.T.: -0.034 min  
Response: 5341  
Conc: 0.47 ng/ml