

Data Path : Z:\pestpcbsrv\HPCHEM1\ECD_0\Data\P0042020\
 Data File : P0067935.D
 Signal(s) : Signal #1: ECD1A.CH Signal #2: ECD2B.CH
 Acq On : 20 Apr 2020 13:40
 Operator : DD\AJ
 Sample : L2339-01
 Misc :
 ALS Vial : 7 Sample Multiplier: 1

Integration File signal 1: autoint1.e
 Integration File signal 2: autoint2.e
 Quant Time: Apr 20 16:51:53 2020
 Quant Method : Z:\pestpcbsrv\HPCHEM1\ECD_0\methods\P0040120.M
 Quant Title : GC EXTRACTABLES
 QLast Update : Fri Apr 03 16:04:09 2020
 Response via : Initial Calibration
 Integrator: ChemStation 6890 Scale Mode: Small noise peaks clipped

Volume Inj. : 2 µl
 Signal #1 Phase : ZB-MR1 Signal #2 Phase: ZB-MR2
 Signal #1 Info : 30Mx0.32mmx 0.50µ Signal #2 Info : 30M x 0.32mm x 0.25µm

Compound	RT#1	RT#2	Resp#1	Resp#2	ng/ml	ng/ml

System Monitoring Compounds						
1) SA Tetrachlo...	4.939	3.943	664000	924695	27.883	27.589
2) SA Decachlor...	10.917	9.229	752427	780308	22.102	18.873

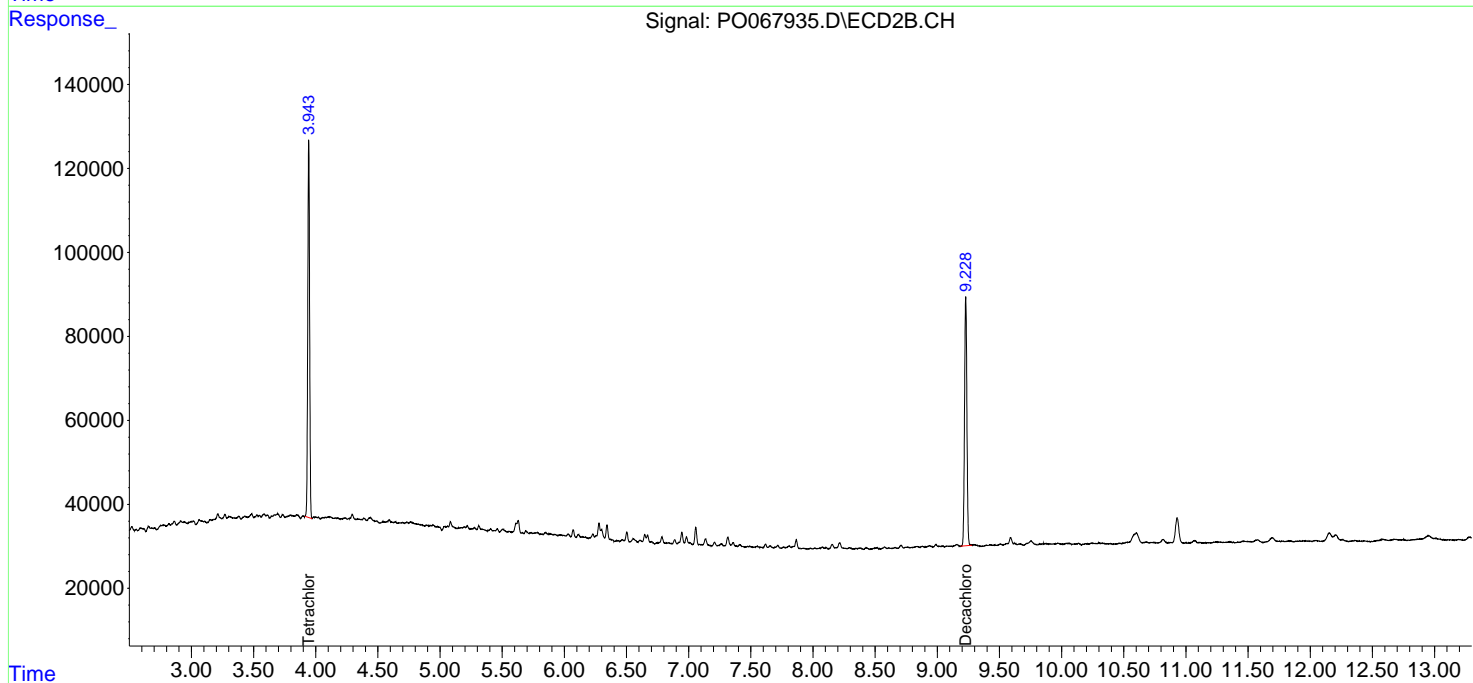
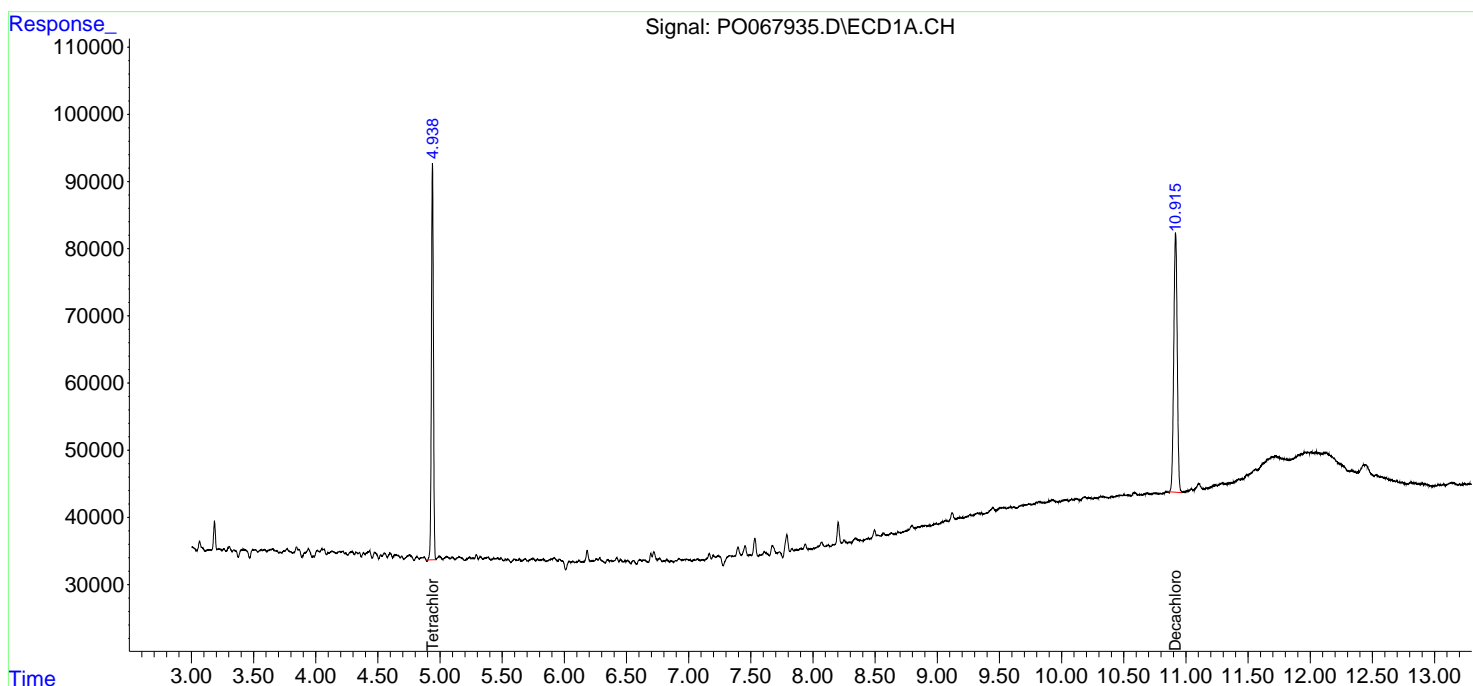
Target Compounds

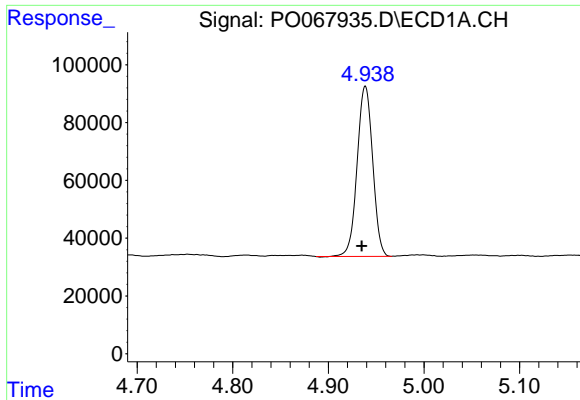
(f)=RT Delta > 1/2 Window (#)=Amounts differ by > 25% (m)=manual int.

Data Path : Z:\pestpcbsrv\HPCHEM1\ECD_0\Data\P0042020\
 Data File : P0067935.D
 Signal(s) : Signal #1: ECD1A.CH Signal #2: ECD2B.CH
 Acq On : 20 Apr 2020 13:40
 Operator : DD\AJ
 Sample : L2339-01
 Misc :
 ALS Vial : 7 Sample Multiplier: 1

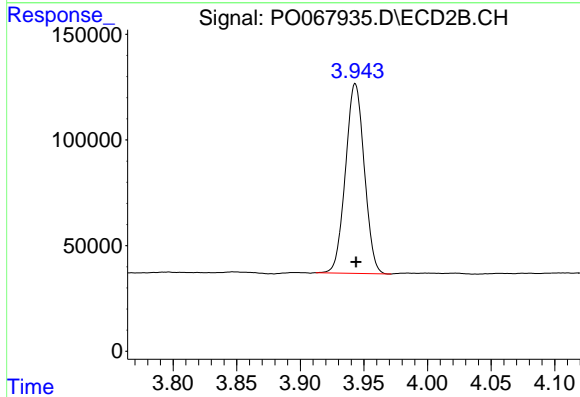
Integration File signal 1: autoint1.e
 Integration File signal 2: autoint2.e
 Quant Time: Apr 20 16:51:53 2020
 Quant Method : Z:\pestpcbsrv\HPCHEM1\ECD_0\methods\P0040120.M
 Quant Title : GC EXTRACTABLES
 QLast Update : Fri Apr 03 16:04:09 2020
 Response via : Initial Calibration
 Integrator: ChemStation 6890 Scale Mode: Small noise peaks clipped

Volume Inj. : 2 µl
 Signal #1 Phase : ZB-MR1 Signal #2 Phase: ZB-MR2
 Signal #1 Info : 30Mx0.32mmx 0.50µ Signal #2 Info : 30M x 0.32mm x 0.25µm

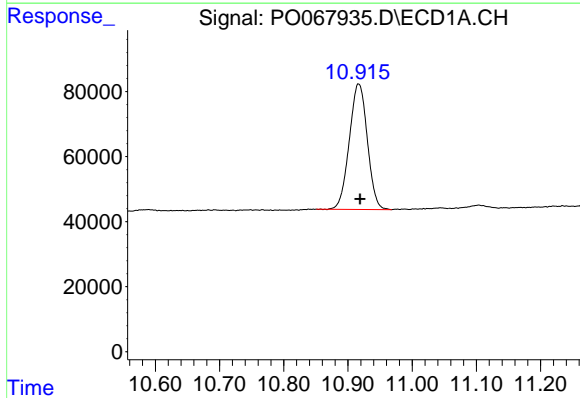




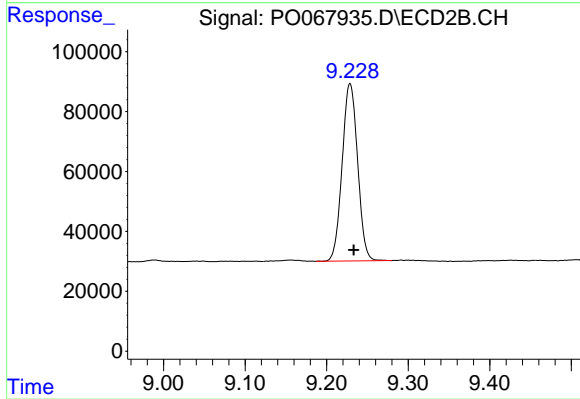
#1 Tetrachloro-m-xylene
 R.T.: 4.939 min
 Delta R.T.: 0.004 min
 Response: 664000
 Conc: 27.88 ng/ml



#1 Tetrachloro-m-xylene
 R.T.: 3.943 min
 Delta R.T.: 0.000 min
 Response: 924695
 Conc: 27.59 ng/ml



#2 Decachlorobiphenyl
 R.T.: 10.917 min
 Delta R.T.: -0.002 min
 Response: 752427
 Conc: 22.10 ng/ml



#2 Decachlorobiphenyl
 R.T.: 9.229 min
 Delta R.T.: -0.004 min
 Response: 780308
 Conc: 18.87 ng/ml