

Data Path : Z:\pestpcbsrv\HPCHEM1\ECD_0\Data\P0042219\
 Data File : P0055510.D
 Signal(s) : Signal #1: ECD1A.CH Signal #2: ECD2B.CH
 Acq On : 22 Apr 2019 14:17
 Operator : SM/SJ
 Sample : K2442-15
 Misc :
 ALS Vial : 7 Sample Multiplier: 1

Instrument :
 ECD_0
 ClientSampleID :
 TP-21-D

Integration File signal 1: autoint1.e
 Integration File signal 2: autoint2.e
 Quant Time: Apr 22 15:09:21 2019
 Quant Method : Z:\pestpcbsrv\HPCHEM1\ECD_0\methods\P0032519.M
 Quant Title : GC EXTRACTABLES
 QLast Update : Mon Mar 25 17:22:26 2019
 Response via : Initial Calibration
 Integrator: ChemStation 6890 Scale Mode: Small noise peaks clipped

Volume Inj. : 2 µl
 Signal #1 Phase : ZB-MR1 Signal #2 Phase: ZB-MR2
 Signal #1 Info : 30Mx0.32mmx 0.50µ Signal #2 Info : 30M x 0.32mm x 0.25µm

Compound	RT#1	RT#2	Resp#1	Resp#2	ng/ml	ng/ml
----------	------	------	--------	--------	-------	-------

 System Monitoring Compounds

1) SA Tetrachlo...	4.288	3.600	598396	588447	17.242	18.439
2) SA Decachlor...	9.897	8.560	708376	535169	14.369	16.804

Target Compounds

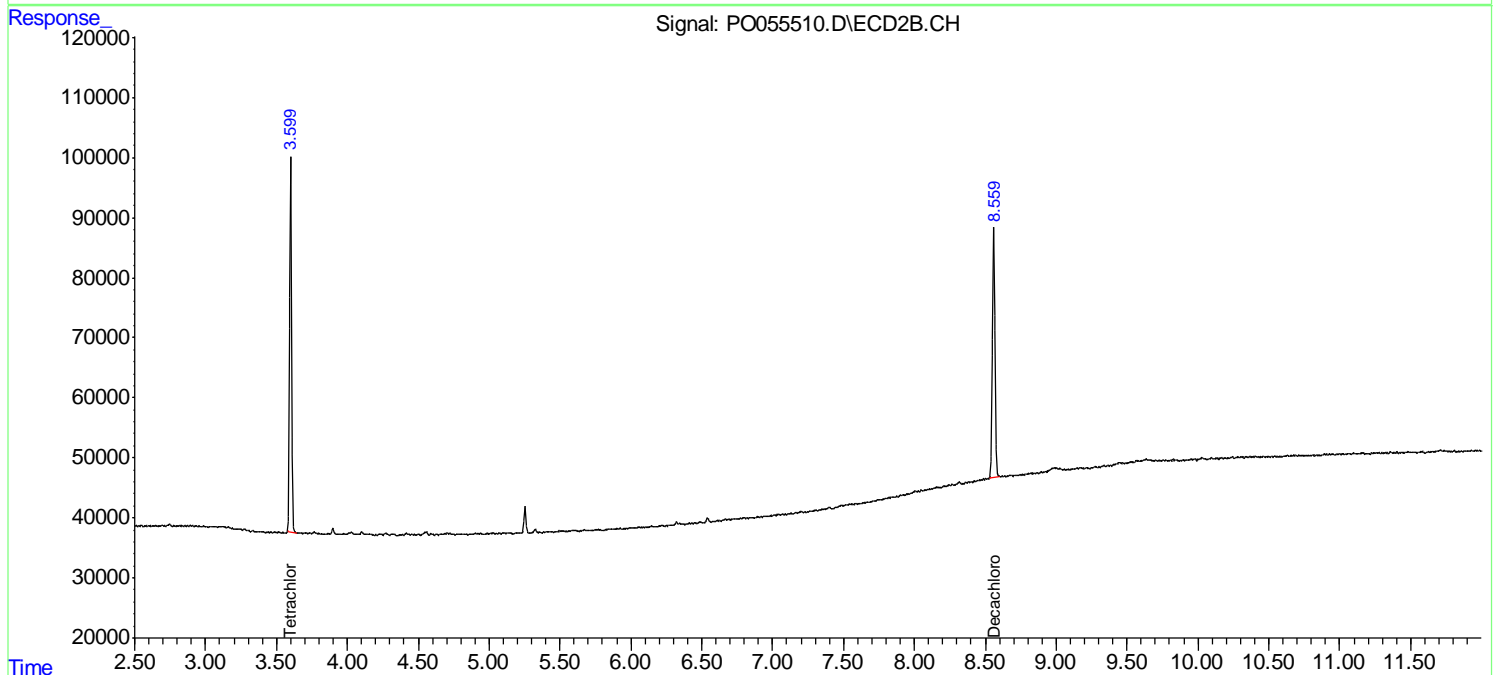
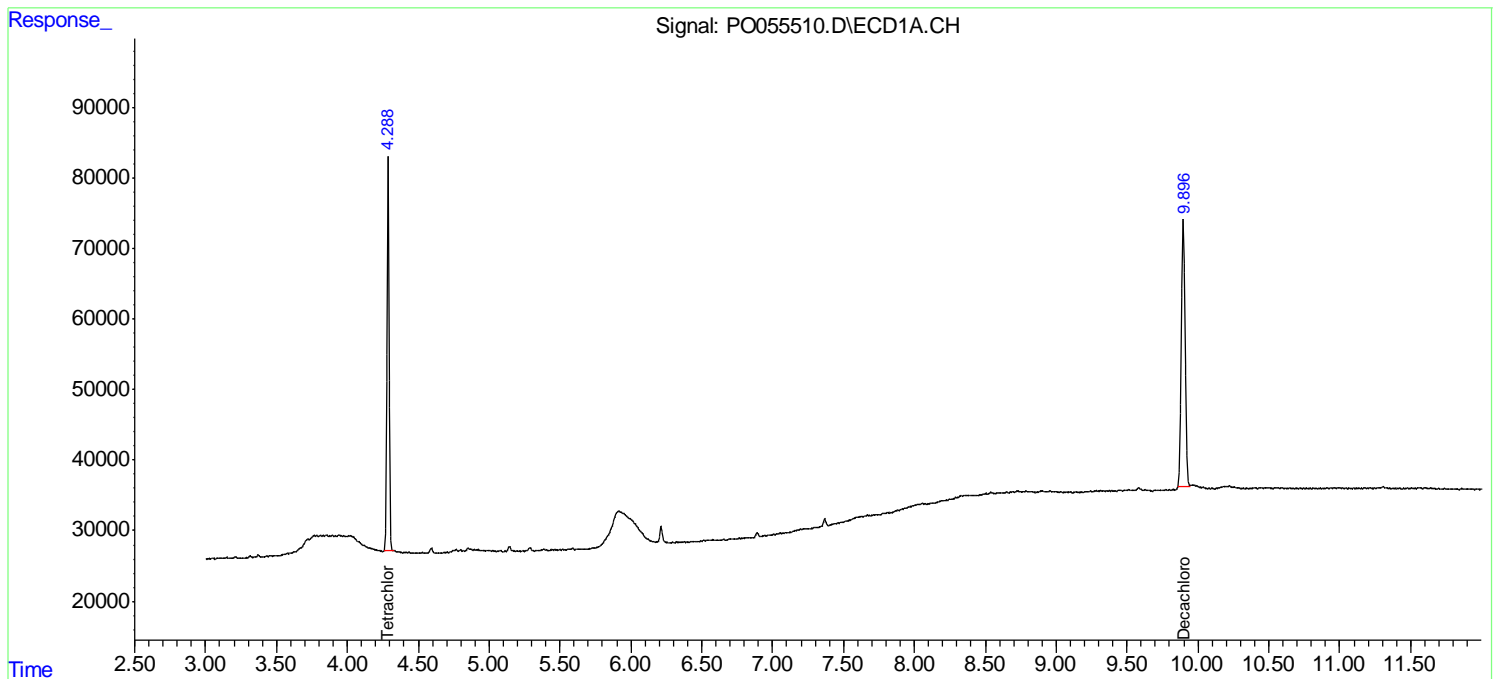
(f)=RT Delta > 1/2 Window (#)=Amounts differ by > 25% (m)=manual int.

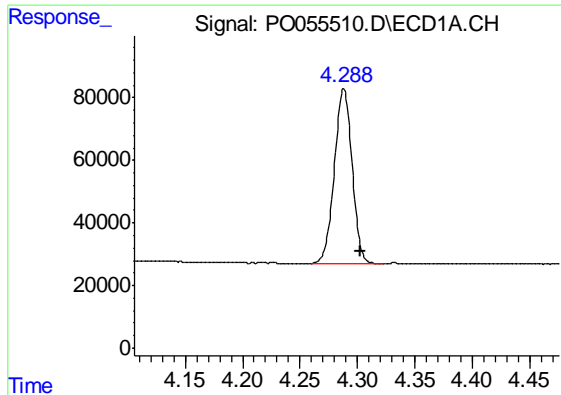
Data Path : Z:\pestpcbsrv\HPCHEM1\ECD_O\Data\P0042219\
 Data File : P0055510.D
 Signal(s) : Signal #1: ECD1A.CH Signal #2: ECD2B.CH
 Acq On : 22 Apr 2019 14:17
 Operator : SM/SJ
 Sample : K2442-15
 Misc :
 ALS Vial : 7 Sample Multiplier: 1

Instrument :
 ECD_O
 ClientSampleID :
 TP-21-D

Integration File signal 1: autoint1.e
 Integration File signal 2: autoint2.e
 Quant Time: Apr 22 15:09:21 2019
 Quant Method : Z:\pestpcbsrv\HPCHEM1\ECD_O\methods\P0032519.M
 Quant Title : GC EXTRACTABLES
 QLast Update : Mon Mar 25 17:22:26 2019
 Response via : Initial Calibration
 Integrator: ChemStation 6890 Scale Mode: Small noise peaks clipped

Volume Inj. : 2 µl
 Signal #1 Phase : ZB-MR1 Signal #2 Phase: ZB-MR2
 Signal #1 Info : 30Mx0.32mmx 0.50µ Signal #2 Info : 30M x 0.32mm x 0.25µm

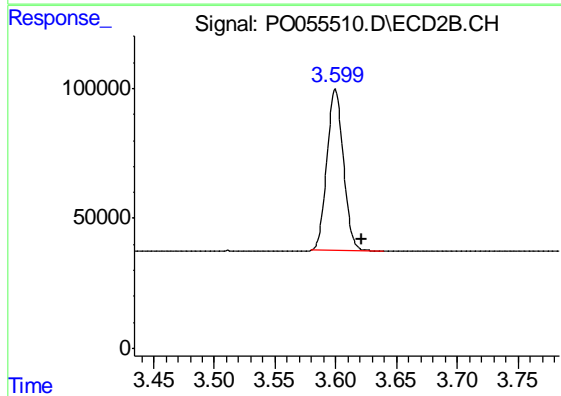




#1 Tetrachloro-m-xylene

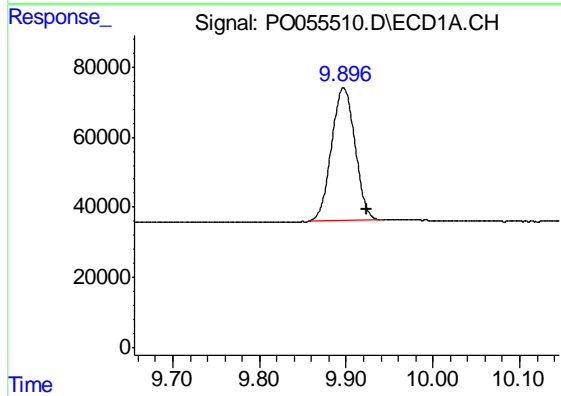
R.T.: 4.288 min
 Delta R.T.: -0.015 min
 Response: 598396
 Conc: 17.24 ng/ml

Instrument :
 ECD_O
 ClientSampleId :
 TP-21-D



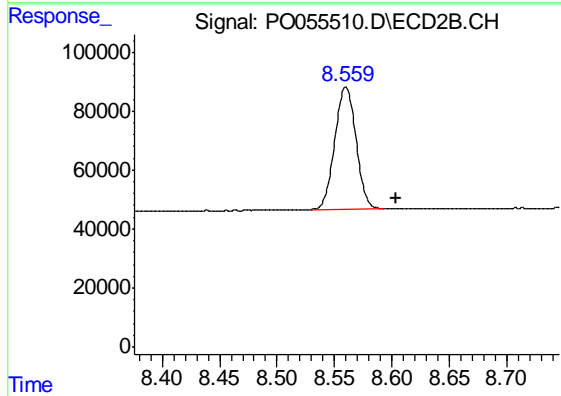
#1 Tetrachloro-m-xylene

R.T.: 3.600 min
 Delta R.T.: -0.021 min
 Response: 588447
 Conc: 18.44 ng/ml



#2 Decachlorobiphenyl

R.T.: 9.897 min
 Delta R.T.: -0.026 min
 Response: 708376
 Conc: 14.37 ng/ml



#2 Decachlorobiphenyl

R.T.: 8.560 min
 Delta R.T.: -0.044 min
 Response: 535169
 Conc: 16.80 ng/ml