

Data Path : Z:\pestpcbsrv\HPCHEM1\ECD\_0\Data\P0042219\  
 Data File : P0055515.D  
 Signal(s) : Signal #1: ECD1A.CH Signal #2: ECD2B.CH  
 Acq On : 22 Apr 2019 16:57  
 Operator : SM/SJ  
 Sample : PB119091BL  
 Misc :  
 ALS Vial : 4 Sample Multiplier: 1

Instrument :  
 ECD\_0  
 ClientSampleId :  
 PB119091BL

Integration File signal 1: autoint1.e  
 Integration File signal 2: autoint2.e  
 Quant Time: Apr 23 10:00:56 2019  
 Quant Method : Z:\pestpcbsrv\HPCHEM1\ECD\_0\methods\P0032519.M  
 Quant Title : GC EXTRACTABLES  
 QLast Update : Mon Mar 25 17:22:26 2019  
 Response via : Initial Calibration  
 Integrator: ChemStation 6890 Scale Mode: Small noise peaks clipped

Volume Inj. : 2 µl  
 Signal #1 Phase : ZB-MR1 Signal #2 Phase: ZB-MR2  
 Signal #1 Info : 30Mx0.32mmx 0.50µ Signal #2 Info : 30M x 0.32mm x 0.25µm

Compound	RT#1	RT#2	Resp#1	Resp#2	ng/ml	ng/ml
----------	------	------	--------	--------	-------	-------

-----  
 System Monitoring Compounds

1) SA Tetrachlo...	4.300	3.601	752321	777954	21.678	24.378
2) SA Decachlor...	9.914	8.566	752822	547579	15.271	17.193

Target Compounds  
 -----

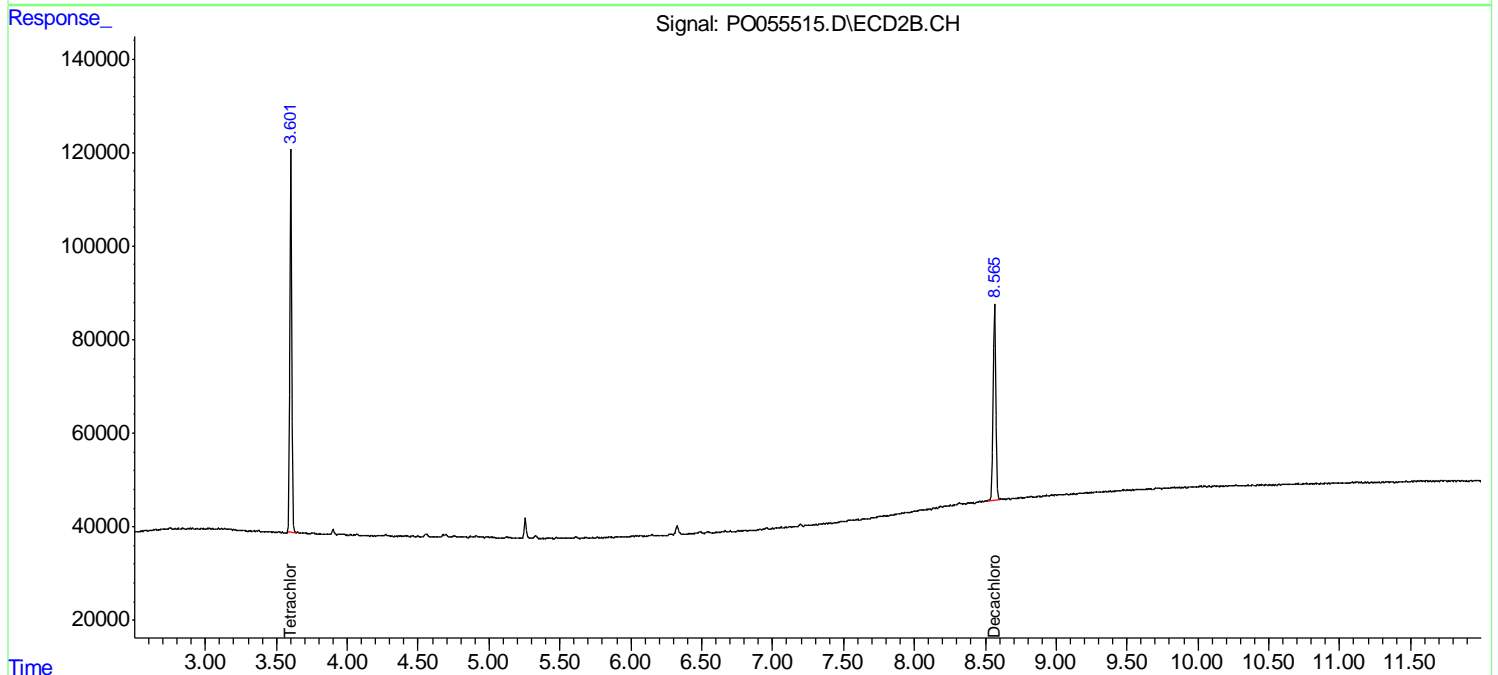
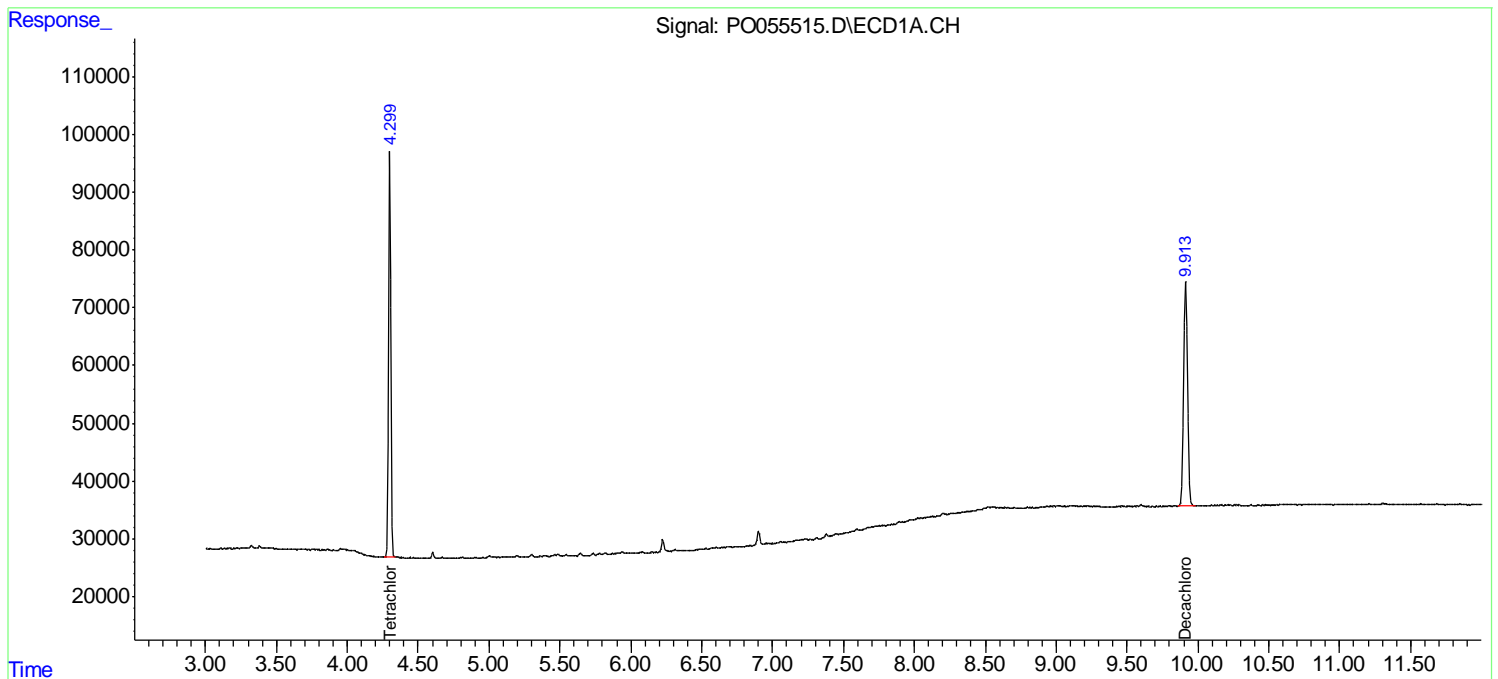
(f)=RT Delta > 1/2 Window (#)=Amounts differ by > 25% (m)=manual int.

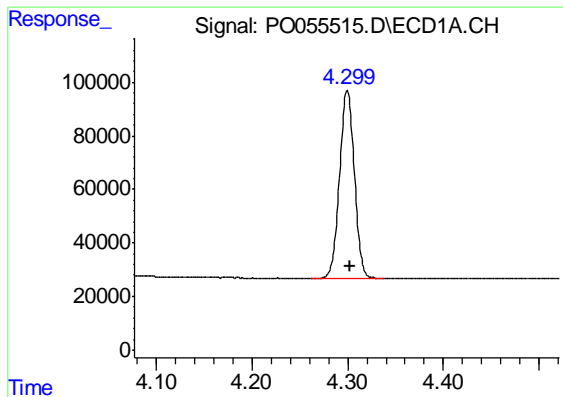
Data Path : Z:\pestpcbsrv\HPCHEM1\ECD\_O\Data\P0042219\  
 Data File : P0055515.D  
 Signal(s) : Signal #1: ECD1A.CH Signal #2: ECD2B.CH  
 Acq On : 22 Apr 2019 16:57  
 Operator : SM/SJ  
 Sample : PB119091BL  
 Misc :  
 ALS Vial : 4 Sample Multiplier: 1

Instrument :  
 ECD\_O  
 ClientSampleId :  
 PB119091BL

Integration File signal 1: autoint1.e  
 Integration File signal 2: autoint2.e  
 Quant Time: Apr 23 10:00:56 2019  
 Quant Method : Z:\pestpcbsrv\HPCHEM1\ECD\_O\methods\P0032519.M  
 Quant Title : GC EXTRACTABLES  
 QLast Update : Mon Mar 25 17:22:26 2019  
 Response via : Initial Calibration  
 Integrator: ChemStation 6890 Scale Mode: Small noise peaks clipped

Volume Inj. : 2 µl  
 Signal #1 Phase : ZB-MR1 Signal #2 Phase: ZB-MR2  
 Signal #1 Info : 30Mx0.32mmx 0.50µ Signal #2 Info : 30M x 0.32mm x 0.25µm

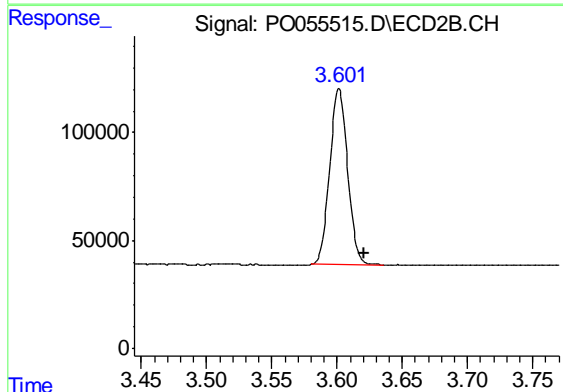




#1 Tetrachloro-m-xylene

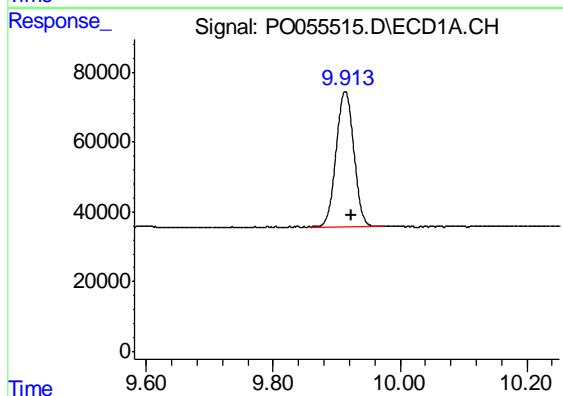
R.T.: 4.300 min  
Delta R.T.: -0.003 min  
Response: 752321  
Conc: 21.68 ng/ml

Instrument :  
ECD\_O  
ClientSampleId :  
PB119091BL



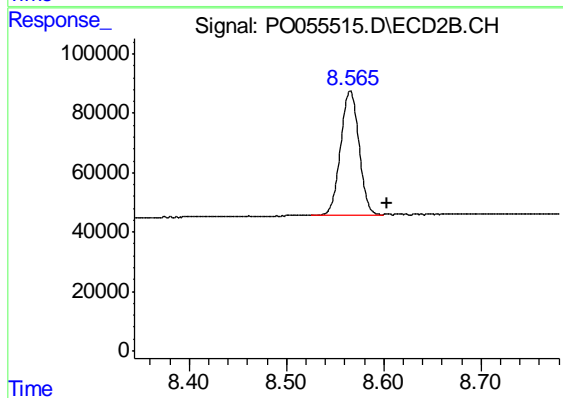
#1 Tetrachloro-m-xylene

R.T.: 3.601 min  
Delta R.T.: -0.019 min  
Response: 777954  
Conc: 24.38 ng/ml



#2 Decachlorobiphenyl

R.T.: 9.914 min  
Delta R.T.: -0.010 min  
Response: 752822  
Conc: 15.27 ng/ml



#2 Decachlorobiphenyl

R.T.: 8.566 min  
Delta R.T.: -0.038 min  
Response: 547579  
Conc: 17.19 ng/ml