

Data Path : Z:\pestpcbsrv\HPCHEM1\ECD_0\Data\P0042320\
 Data File : P0067995.D
 Signal(s) : Signal #1: ECD1A.CH Signal #2: ECD2B.CH
 Acq On : 23 Apr 2020 10:12
 Operator : DD\AJ
 Sample : L2353-01MSD
 Misc :
 ALS Vial : 8 Sample Multiplier: 1

Integration File signal 1: autoint1.e
 Integration File signal 2: autoint2.e
 Quant Time: Apr 24 07:08:03 2020
 Quant Method : Z:\pestpcbsrv\HPCHEM1\ECD_0\methods\P0040120.M
 Quant Title : GC EXTRACTABLES
 QLast Update : Fri Apr 03 16:04:09 2020
 Response via : Initial Calibration
 Integrator: ChemStation 6890 Scale Mode: Small noise peaks clipped

Volume Inj. : 2 µl
 Signal #1 Phase : ZB-MR2 Signal #2 Phase: ZB-MR2
 Signal #1 Info : 30Mx0.32mmx 0.50µ Signal #2 Info : 30M x 0.32mm x 0.25µm

Compound	RT#1	RT#2	Resp#1	Resp#2	ng/ml	ng/ml

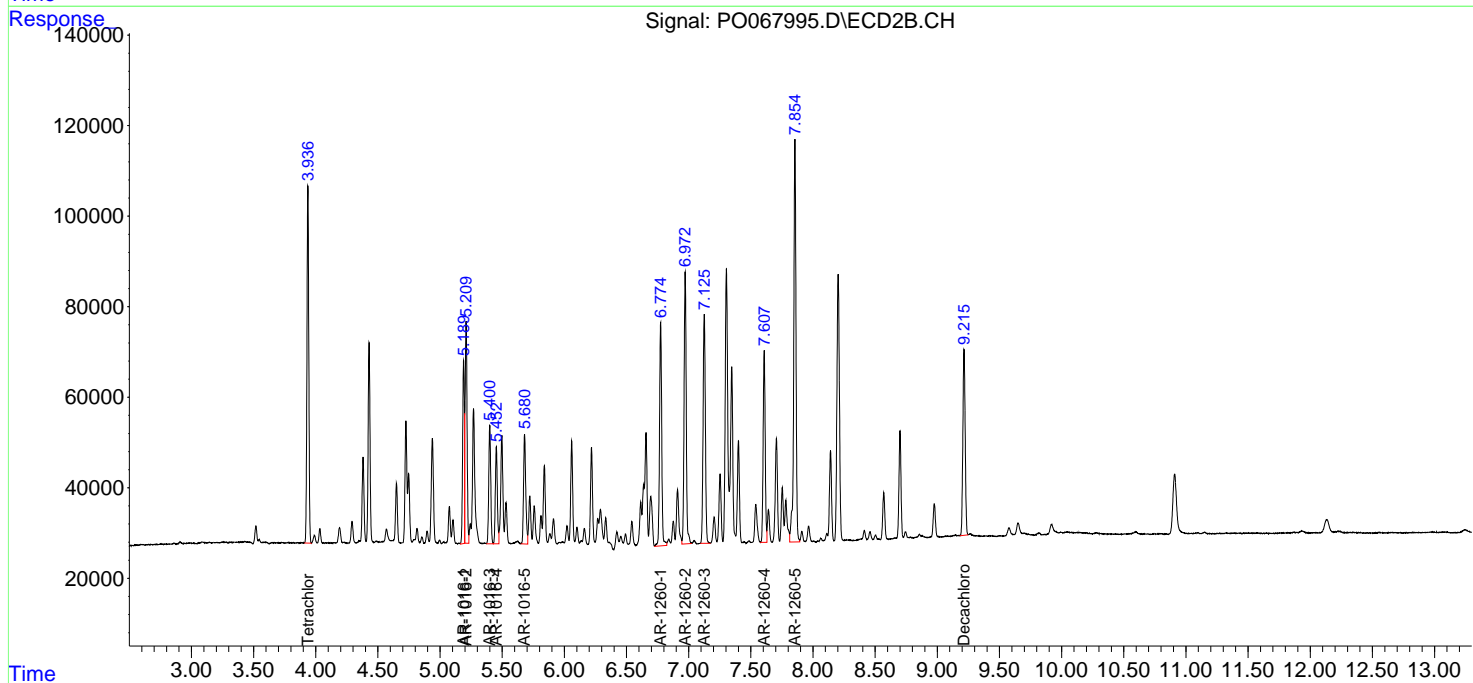
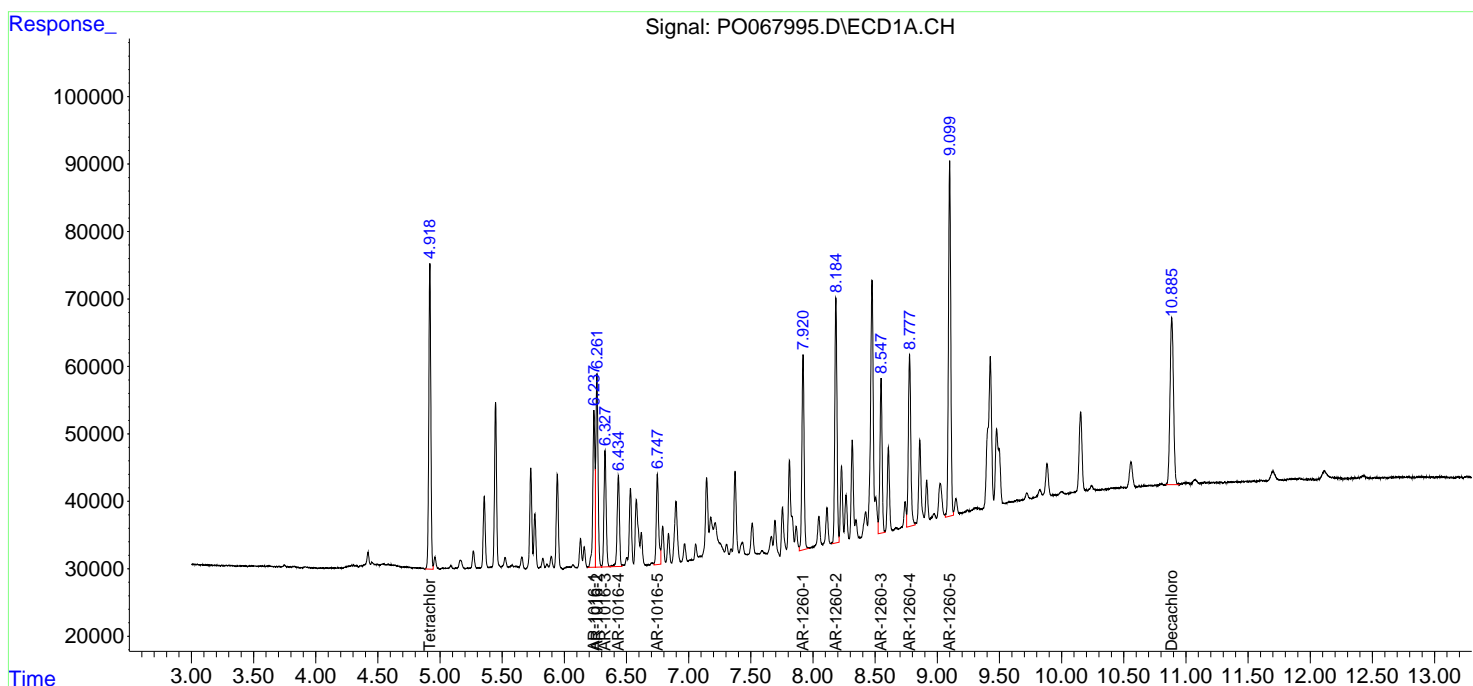
System Monitoring Compounds						
1) SA Tetrachlo...	4.918	3.937	515616	812543	21.652	24.243
2) SA Decachlor...	10.886	9.215	479769	537683	14.093	13.005
Target Compounds						
3) L1 AR-1016-1	6.238	5.189	273678	394733	265.389	269.273m
4) L1 AR-1016-2	6.262	5.210	348538	530367	247.025	270.737
5) L1 AR-1016-3	6.327	5.400	213775	290775	243.208	278.023
6) L1 AR-1016-4	6.435	5.453	177648	239531	251.922	268.508
7) L1 AR-1016-5	6.748	5.680	176106	294202	244.918	259.984
31) L7 AR-1260-1	7.920	6.774	359355	602232	265.907	287.265
32) L7 AR-1260-2	8.184	6.972	443124	720317	262.487	280.525
33) L7 AR-1260-3	8.548	7.125	282043	640541	216.376	266.373
34) L7 AR-1260-4	8.777	7.608	350086	483157	227.802	229.889
35) L7 AR-1260-5	9.100	7.855	676293	1118002	214.382	220.839

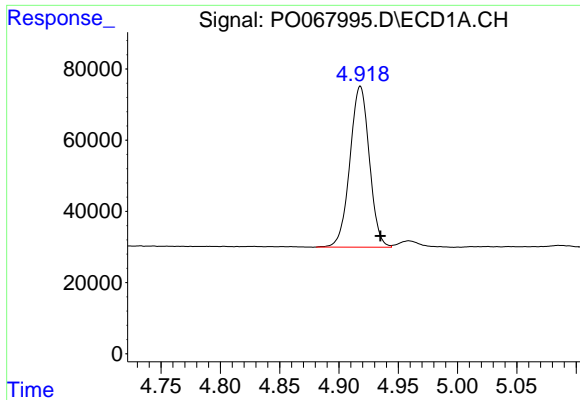
(f)=RT Delta > 1/2 Window (#)=Amounts differ by > 25% (m)=manual int.

Data Path : Z:\pestpcbsrv\HPCHEM1\ECD_0\Data\P0042320\
 Data File : P0067995.D
 Signal(s) : Signal #1: ECD1A.CH Signal #2: ECD2B.CH
 Acq On : 23 Apr 2020 10:12
 Operator : DD\AJ
 Sample : L2353-01MSD
 Misc :
 ALS Vial : 8 Sample Multiplier: 1

Integration File signal 1: autoint1.e
 Integration File signal 2: autoint2.e
 Quant Time: Apr 24 07:08:03 2020
 Quant Method : Z:\pestpcbsrv\HPCHEM1\ECD_0\methods\P0040120.M
 Quant Title : GC EXTRACTABLES
 QLast Update : Fri Apr 03 16:04:09 2020
 Response via : Initial Calibration
 Integrator: ChemStation 6890 Scale Mode: Small noise peaks clipped

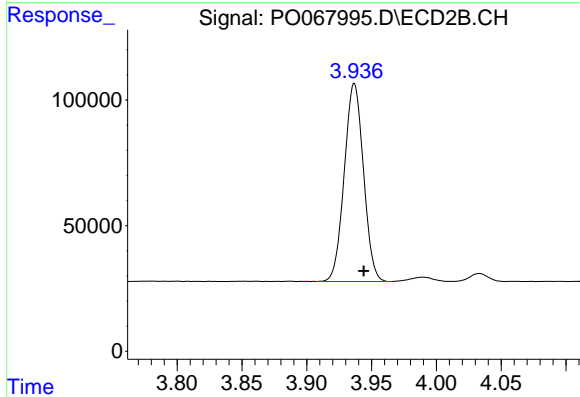
Volume Inj. : 2 µl
 Signal #1 Phase : ZB-MR1 Signal #2 Phase: ZB-MR2
 Signal #1 Info : 30Mx0.32mmx 0.50µ Signal #2 Info : 30M x 0.32mm x 0.25µm





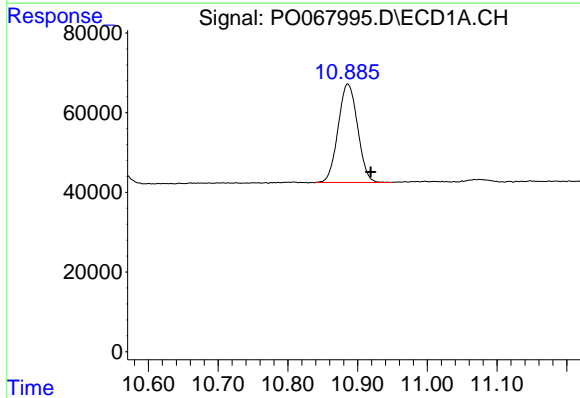
#1 Tetrachloro-m-xylene

R.T.: 4.918 min
Delta R.T.: -0.017 min
Response: 515616
Conc: 21.65 ng/ml



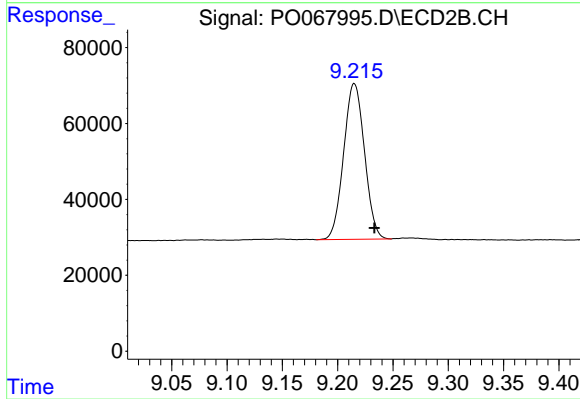
#1 Tetrachloro-m-xylene

R.T.: 3.937 min
Delta R.T.: -0.007 min
Response: 812543
Conc: 24.24 ng/ml



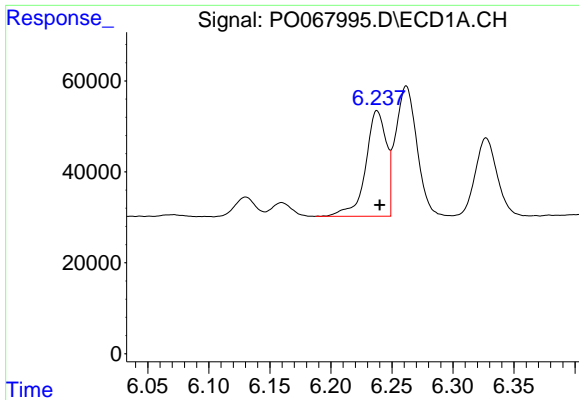
#2 Decachlorobiphenyl

R.T.: 10.886 min
Delta R.T.: -0.033 min
Response: 479769
Conc: 14.09 ng/ml



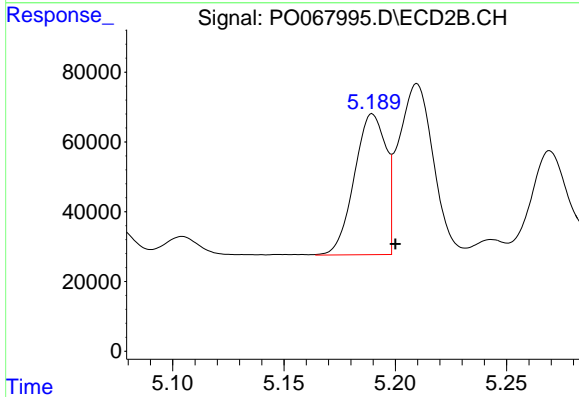
#2 Decachlorobiphenyl

R.T.: 9.215 min
Delta R.T.: -0.018 min
Response: 537683
Conc: 13.00 ng/ml



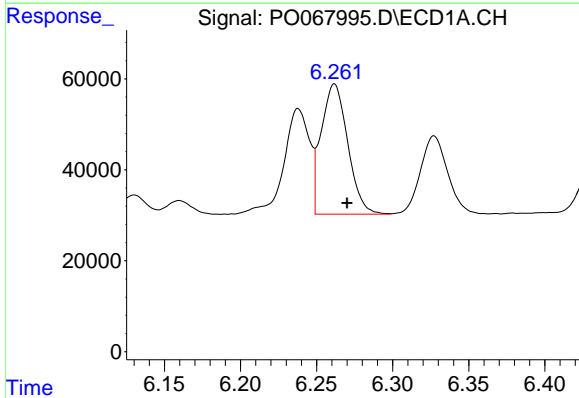
#3 AR-1016-1

R.T.: 6.238 min
 Delta R.T.: -0.002 min
 Response: 273678
 Conc: 265.39 ng/ml



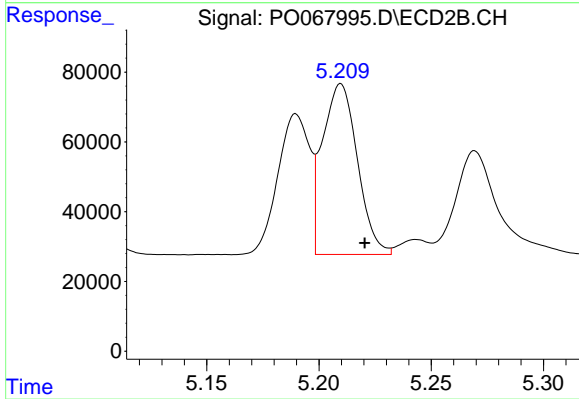
#3 AR-1016-1

R.T.: 5.189 min
 Delta R.T.: -0.011 min
 Response: 394733
 Conc: 269.27 ng/ml m



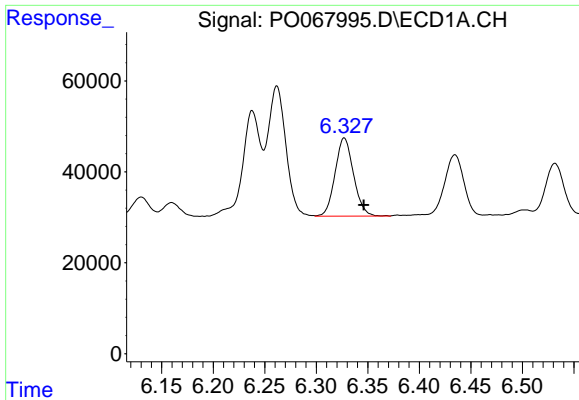
#4 AR-1016-2

R.T.: 6.262 min
 Delta R.T.: -0.008 min
 Response: 348538
 Conc: 247.03 ng/ml



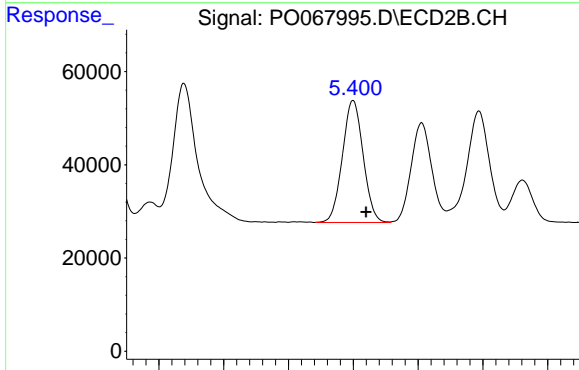
#4 AR-1016-2

R.T.: 5.210 min
 Delta R.T.: -0.011 min
 Response: 530367
 Conc: 270.74 ng/ml



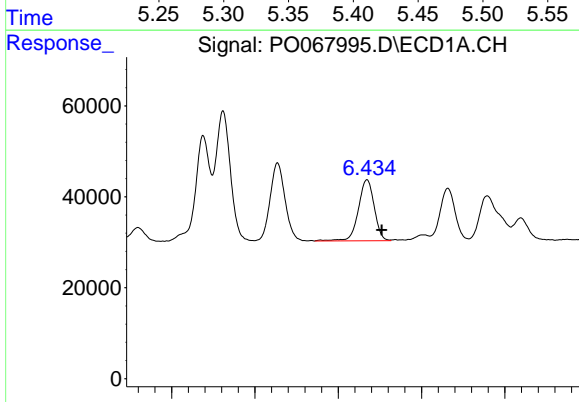
#5 AR-1016-3

R.T.: 6.327 min
Delta R.T.: -0.019 min
Response: 213775
Conc: 243.21 ng/ml



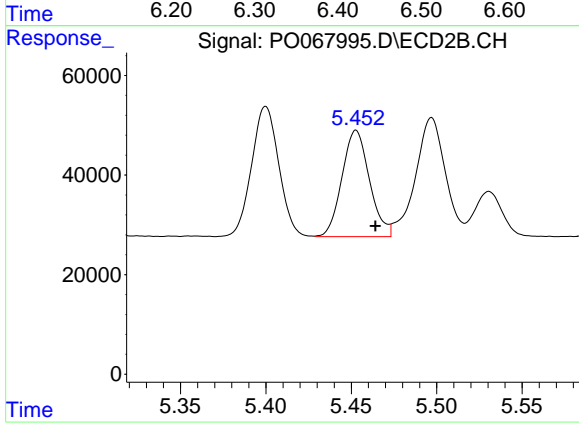
#5 AR-1016-3

R.T.: 5.400 min
Delta R.T.: -0.010 min
Response: 290775
Conc: 278.02 ng/ml



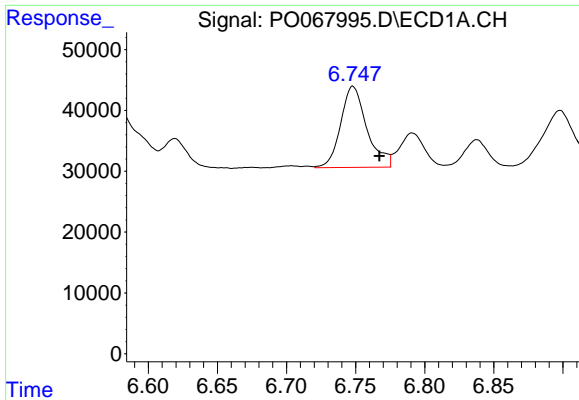
#6 AR-1016-4

R.T.: 6.435 min
Delta R.T.: -0.018 min
Response: 177648
Conc: 251.92 ng/ml



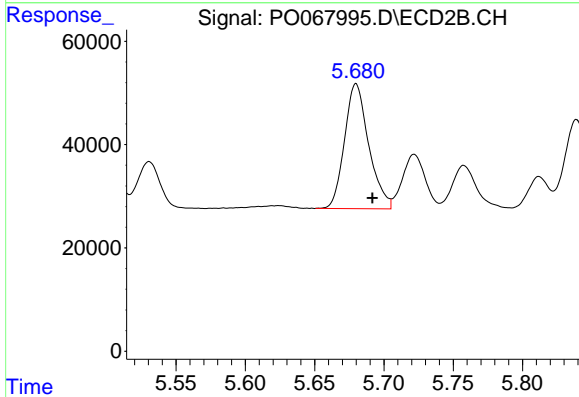
#6 AR-1016-4

R.T.: 5.453 min
Delta R.T.: -0.011 min
Response: 239531
Conc: 268.51 ng/ml



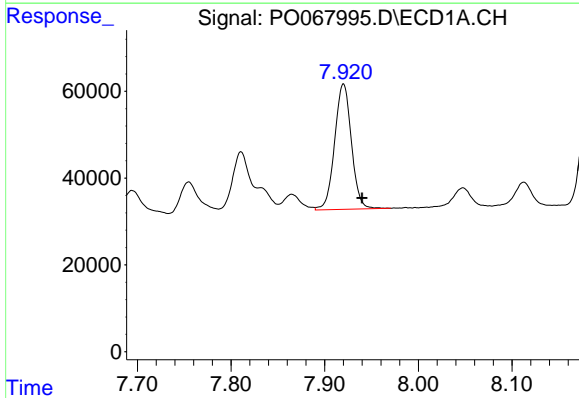
#7 AR-1016-5

R.T.: 6.748 min
 Delta R.T.: -0.019 min
 Response: 176106
 Conc: 244.92 ng/ml



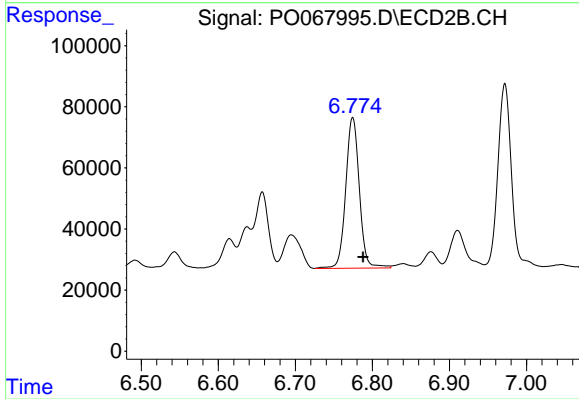
#7 AR-1016-5

R.T.: 5.680 min
 Delta R.T.: -0.012 min
 Response: 294202
 Conc: 259.98 ng/ml



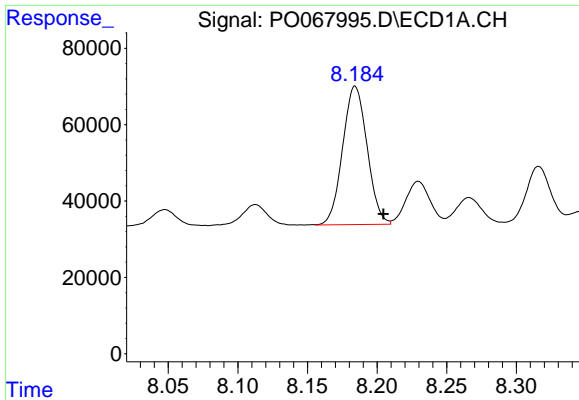
#31 AR-1260-1

R.T.: 7.920 min
 Delta R.T.: -0.020 min
 Response: 359355
 Conc: 265.91 ng/ml



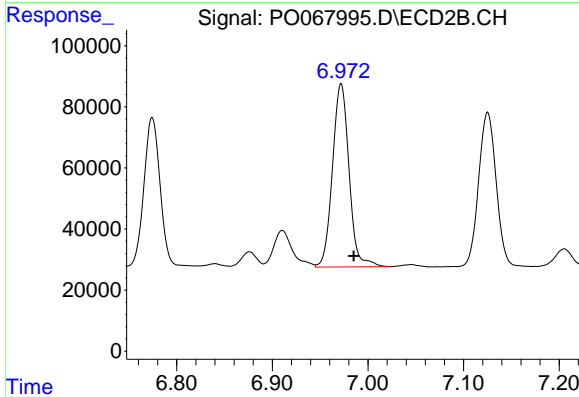
#31 AR-1260-1

R.T.: 6.774 min
 Delta R.T.: -0.014 min
 Response: 602232
 Conc: 287.26 ng/ml



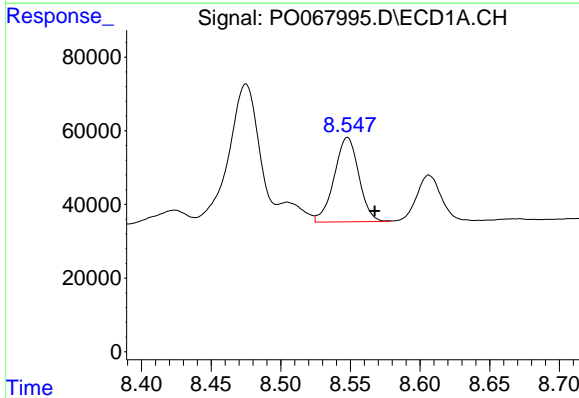
#32 AR-1260-2

R.T.: 8.184 min
 Delta R.T.: -0.020 min
 Response: 443124
 Conc: 262.49 ng/ml



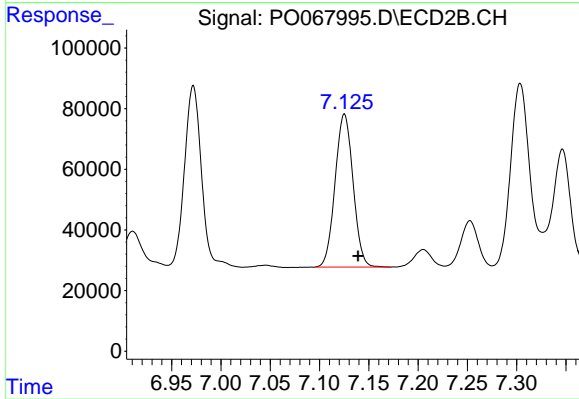
#32 AR-1260-2

R.T.: 6.972 min
 Delta R.T.: -0.013 min
 Response: 720317
 Conc: 280.53 ng/ml



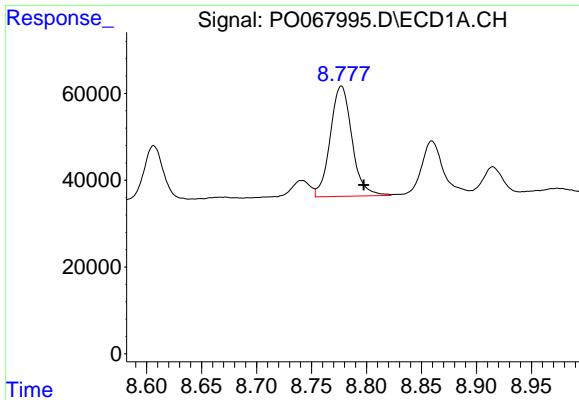
#33 AR-1260-3

R.T.: 8.548 min
 Delta R.T.: -0.020 min
 Response: 282043
 Conc: 216.38 ng/ml



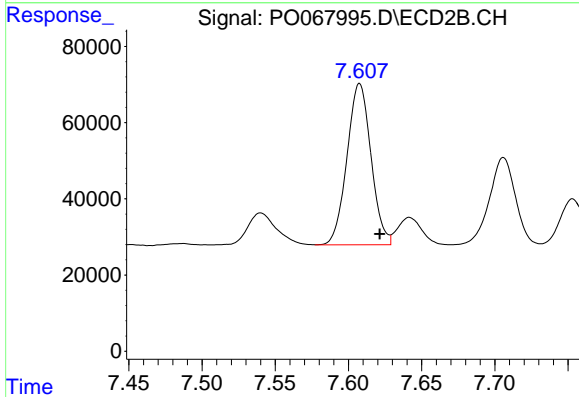
#33 AR-1260-3

R.T.: 7.125 min
 Delta R.T.: -0.014 min
 Response: 640541
 Conc: 266.37 ng/ml



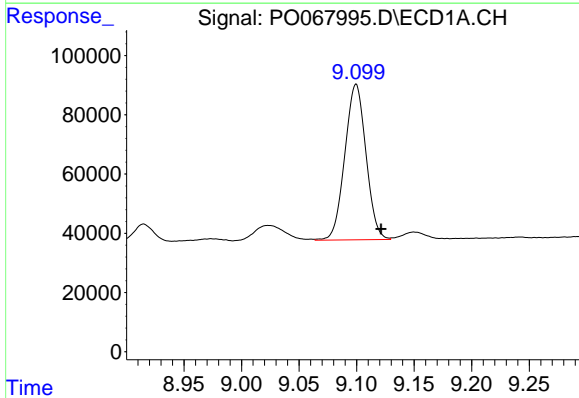
#34 AR-1260-4

R.T.: 8.777 min
Delta R.T.: -0.020 min
Response: 350086
Conc: 227.80 ng/ml



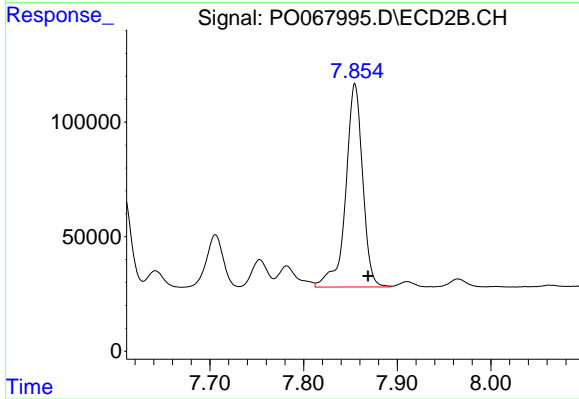
#34 AR-1260-4

R.T.: 7.608 min
Delta R.T.: -0.014 min
Response: 483157
Conc: 229.89 ng/ml



#35 AR-1260-5

R.T.: 9.100 min
Delta R.T.: -0.022 min
Response: 676293
Conc: 214.38 ng/ml



#35 AR-1260-5

R.T.: 7.855 min
Delta R.T.: -0.014 min
Response: 1118002
Conc: 220.84 ng/ml