

Data Path : Z:\pestpcbsrv\HPCHEM1\ECD_0\Data\P0050120\
 Data File : P0068123.D
 Signal(s) : Signal #1: ECD1A.CH Signal #2: ECD2B.CH
 Acq On : 01 May 2020 15:04
 Operator : DD\AJ
 Sample : L2463-01
 Misc :
 ALS Vial : 21 Sample Multiplier: 1

Instrument :
 ECD_O
 ClientSampled :

Integration File signal 1: autoint1.e
 Integration File signal 2: autoint2.e
 Quant Time: May 01 16:17:51 2020
 Quant Method : Z:\pestpcbsrv\HPCHEM1\ECD_0\methods\P0042720.M
 Quant Title : GC EXTRACTABLES
 QLast Update : Tue Apr 28 07:12:58 2020
 Response via : Initial Calibration
 Integrator: ChemStation 6890 Scale Mode: Small noise peaks clipped

Volume Inj. : 2 µl
 Signal #1 Phase : ZB-MR1 Signal #2 Phase: ZB-MR2
 Signal #1 Info : 30Mx0.32mmx 0.50µ Signal #2 Info : 30M x 0.32mm x 0.25µm

Compound	RT#1	RT#2	Resp#1	Resp#2	ng/ml	ng/ml
System Monitoring Compounds						
1) SA Tetrachlo...	4.914	3.936	584549	809768	24.428	25.341
2) SA Decachlor...	10.882	9.214	714250	601954	18.926	15.597
Target Compounds						
3) L1 AR-1016-1	6.255	5.171	26510	25771	26.460	18.669 #
4) L1 AR-1016-2	6.255	5.210	26510	52251	19.203	28.813 #
5) L1 AR-1016-3	6.328	5.397	8949	52025	10.353	51.653 #
6) L1 AR-1016-4	6.438	5.451	23175	44543	32.806	52.533 #
7) L1 AR-1016-5	6.742	5.682	55971	71352	78.560	66.074
8) L2 AR-1221-1	5.184	4.193	22977	37614	67.349	76.655
9) L2 AR-1221-2	5.267	4.286	24125	102929	92.042	277.652 #
10) L2 AR-1221-3	5.364	4.382	5870	45734	6.875	40.676 #
11) L3 AR-1232-1	5.364	4.382	5870	45734	10.311	59.723 #
12) L3 AR-1232-2	5.966	5.210	78284	52251	269.658	65.551 #
13) L3 AR-1232-3	6.255	5.397	26510	52025	43.441	121.085 #
14) L3 AR-1232-4	6.438	5.497	23175	51952	76.700	132.667 #
15) L3 AR-1232-5	6.530	5.682	31364	71352	149.174	163.239
16) L4 AR-1242-1	6.255	5.171	26510	25771	32.900	24.359 #
17) L4 AR-1242-2	6.255	5.210	26510	52251	24.042	37.229 #
18) L4 AR-1242-3	6.328	5.397	8949	52025	12.998	66.099 #
19) L4 AR-1242-4	6.438	5.497	23175	51952	41.076	66.234 #
20) L4 AR-1242-5	7.214	6.059	70442	186534	105.868	180.851 #
21) L5 AR-1248-1	6.255	5.171	26510	25771	43.063	30.667 #
22) L5 AR-1248-2	6.530	5.451	31364	44543	39.454	40.986
23) L5 AR-1248-3	6.742	5.497	55971	51952	60.109	47.424
24) L5 AR-1248-4	7.175	5.682	66878	71352	59.845	53.442
25) L5 AR-1248-5	7.214	6.102	70442	35485	66.023	26.208 #
26) L6 AR-1254-1	7.142	6.059	132533	186534	119.816	90.923
27) L6 AR-1254-2	7.373	6.219	493036	236562	284.599	128.958 #
28) L6 AR-1254-3	7.756	6.637	575320	572575	312.139	192.157 #
29) L6 AR-1254-4	8.046	6.877	394412	469984	273.350	234.900
30) L6 AR-1254-5	8.472	7.305	618102	1281597	412.802	457.924
31) L7 AR-1260-1	7.916	6.775	237866	422268	188.467	210.054
32) L7 AR-1260-2	8.182	6.972	963302	512680	615.338	207.262 #
33) L7 AR-1260-3	8.541	7.123	105051	408725	83.470	177.690 #
34) L7 AR-1260-4	8.769	7.607	266214	114209	191.423	57.008 #
35) L7 AR-1260-5	9.096	7.854	173319	269279	59.439	57.643
36) L8 AR-1262-1	8.541	7.305	105051	1281597	57.517	853.416 #
37) L8 AR-1262-2	9.096	7.854	173319	269279	52.406	54.448
38) L8 AR-1262-3	9.424	8.140	166203	90399	69.345	44.793 #
39) L8 AR-1262-4	9.494	8.201	103467	222347	54.554	60.453
40) L8 AR-1262-5	10.149	8.700	39260	82706	27.981	46.717 #
41) L9 AR-1268-1	9.424	8.140	166203	90399	39.768	15.425 #

Data Path : Z:\pestpcbsrv\HPCHEM1\ECD_0\Data\P0050120\
 Data File : P0068123.D
 Signal(s) : Signal #1: ECD1A.CH Signal #2: ECD2B.CH
 Acq On : 01 May 2020 15:04
 Operator : DD\AJ
 Sample : L2463-01
 Misc :
 ALS Vial : 21 Sample Multiplier: 1

Instrument :
 ECD_0
 ClientSampleId :

Integration File signal 1: autoint1.e
 Integration File signal 2: autoint2.e
 Quant Time: May 01 16:17:51 2020
 Quant Method : Z:\pestpcbsrv\HPCHEM1\ECD_0\methods\P0042720.M
 Quant Title : GC EXTRACTABLES
 QLast Update : Tue Apr 28 07:12:58 2020
 Response via : Initial Calibration
 Integrator: ChemStation 6890 Scale Mode: Small noise peaks clipped

Volume Inj. : 2 µl
 Signal #1 Phase : ZB-MR1 Signal #2 Phase: ZB-MR2
 Signal #1 Info : 30Mx0.32mmx 0.50µ Signal #2 Info : 30M x 0.32mm x 0.25µm

	Compound	RT#1	RT#2	Resp#1	Resp#2	ng/ml	ng/ml
42)	L9 AR-1268-2	9.494	8.201	103467	222347	25.589	41.778 #
43)	L9 AR-1268-3	9.717	8.412	99200	72175	28.817	16.635 #
44)	L9 AR-1268-4	10.149	8.700	39260	82706	24.491	40.287 #
45)	L9 AR-1268-5	10.552	8.975	163444	166130	13.825	12.430

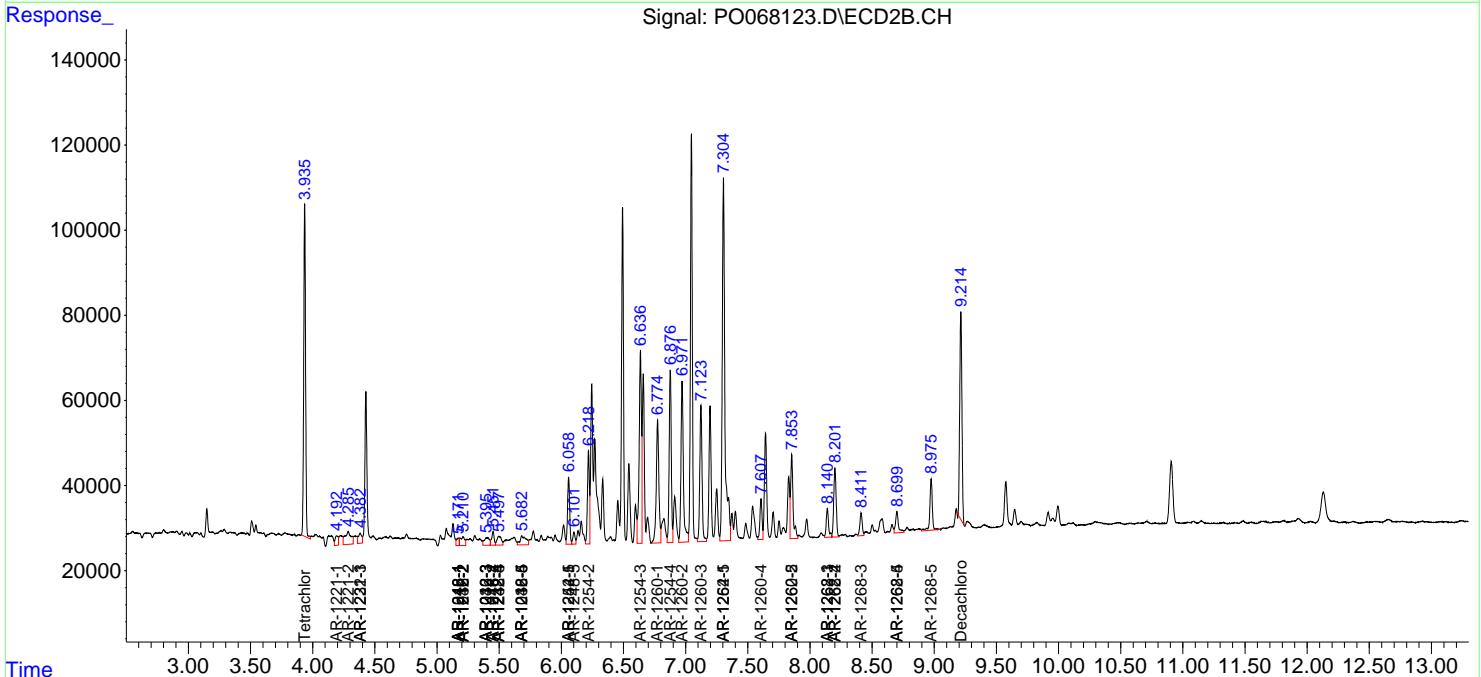
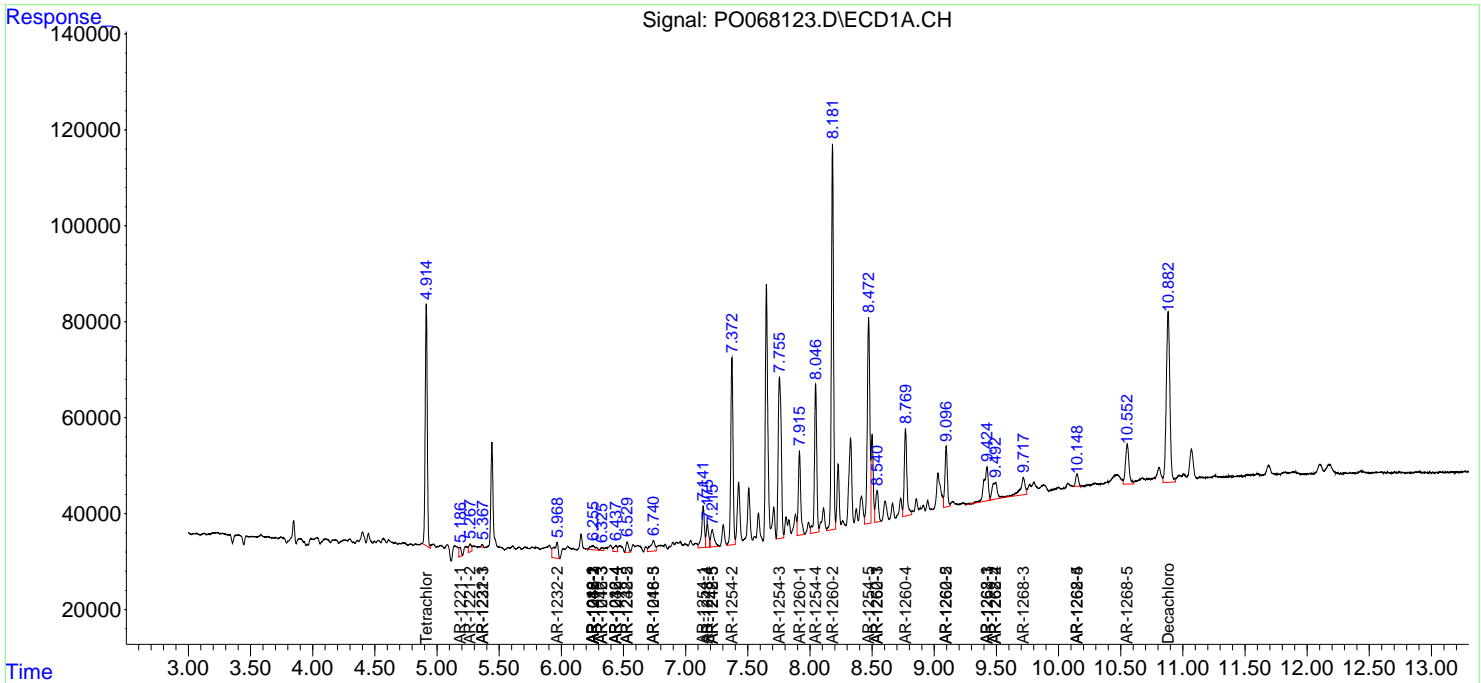
(f)=RT Delta > 1/2 Window (#)=Amounts differ by > 25% (m)=manual int.

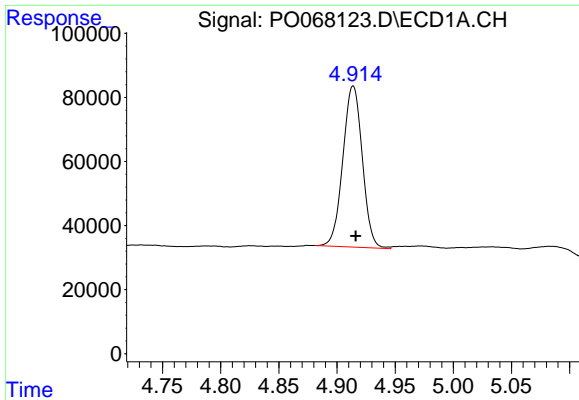
Data Path : Z:\pestpcbsrv\HPCHEM1\ECD_O\Data\PO050120\
 Data File : PO068123.D
 Signal(s) : Signal #1: ECD1A.CH Signal #2: ECD2B.CH
 Acq On : 01 May 2020 15:04
 Operator : DD\AJ
 Sample : L2463-01
 Misc :
 ALS Vial : 21 Sample Multiplier: 1

Instrument :
 ECD_O
 ClientSampled :

Integration File signal 1: autoint1.e
 Integration File signal 2: autoint2.e
 Quant Time: May 01 16:17:51 2020
 Quant Method : Z:\pestpcbsrv\HPCHEM1\ECD_O\methods\PO042720.M
 Quant Title : GC EXTRACTABLES
 QLast Update : Tue Apr 28 07:12:58 2020
 Response via : Initial Calibration
 Integrator: ChemStation 6890 Scale Mode: Small noise peaks clipped

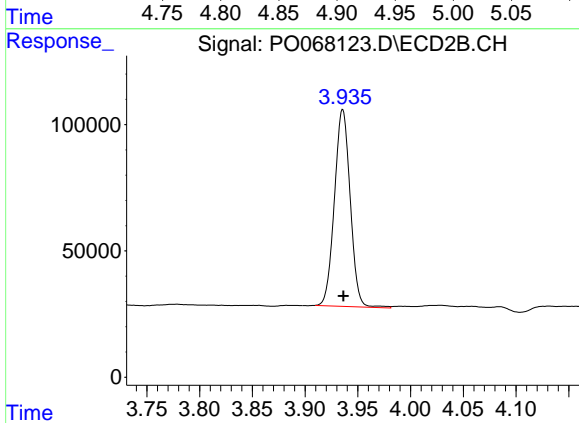
Volume Inj. : 2 µl
 Signal #1 Phase : ZB-MR1 Signal #2 Phase: ZB-MR2
 Signal #1 Info : 30Mx0.32mmx 0.50µ Signal #2 Info : 30M x 0.32mm x 0.25µm



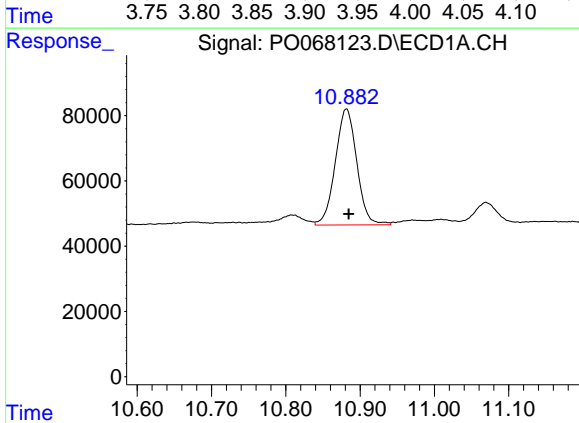


#1 Tetrachloro-m-xylene
 R.T.: 4.914 min
 Delta R.T.: -0.002 min
 Response: 584549
 Conc: 24.43 ng/ml

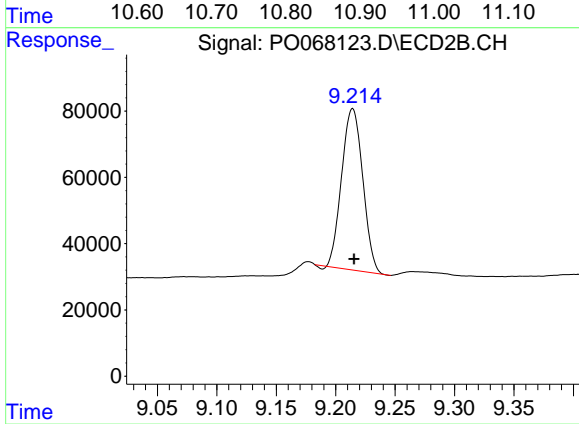
Instrument :
 ECD_O
 ClientSampled :



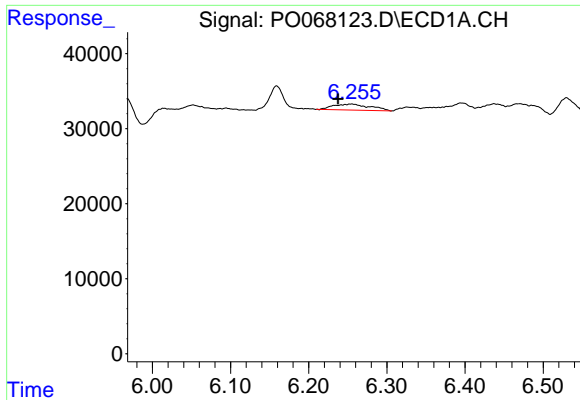
#1 Tetrachloro-m-xylene
 R.T.: 3.936 min
 Delta R.T.: 0.000 min
 Response: 809768
 Conc: 25.34 ng/ml



#2 Decachlorobiphenyl
 R.T.: 10.882 min
 Delta R.T.: -0.003 min
 Response: 714250
 Conc: 18.93 ng/ml

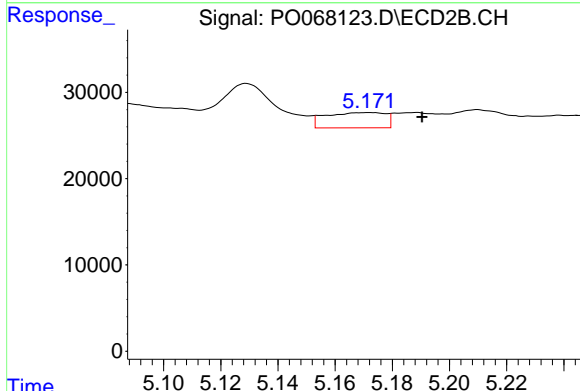


#2 Decachlorobiphenyl
 R.T.: 9.214 min
 Delta R.T.: -0.001 min
 Response: 601954
 Conc: 15.60 ng/ml

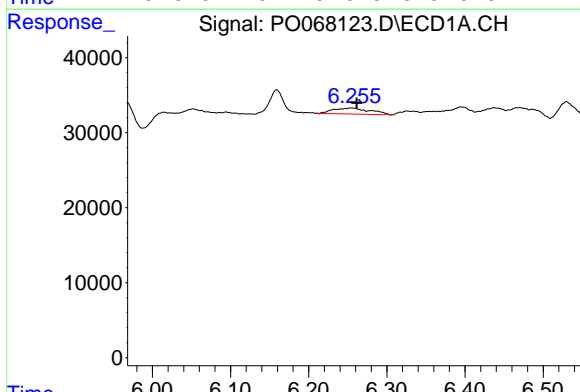


#3 AR-1016-1
 R.T.: 6.255 min
 Delta R.T.: 0.018 min
 Response: 26510
 Conc: 26.46 ng/ml

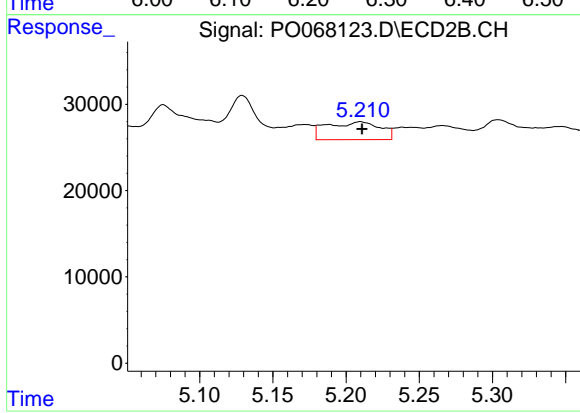
Instrument :
 ECD_O
 ClientSampled :



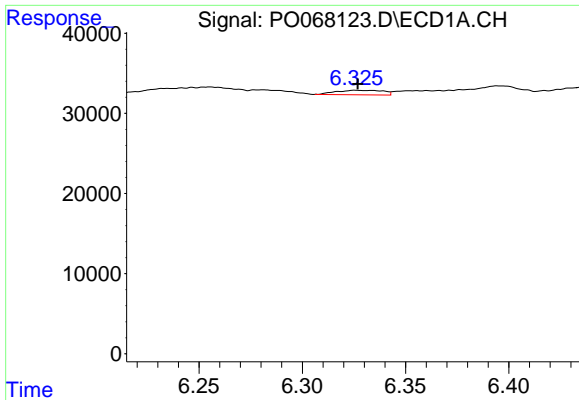
#3 AR-1016-1
 R.T.: 5.171 min
 Delta R.T.: -0.019 min
 Response: 25771
 Conc: 18.67 ng/ml



#4 AR-1016-2
 R.T.: 6.255 min
 Delta R.T.: -0.006 min
 Response: 26510
 Conc: 19.20 ng/ml

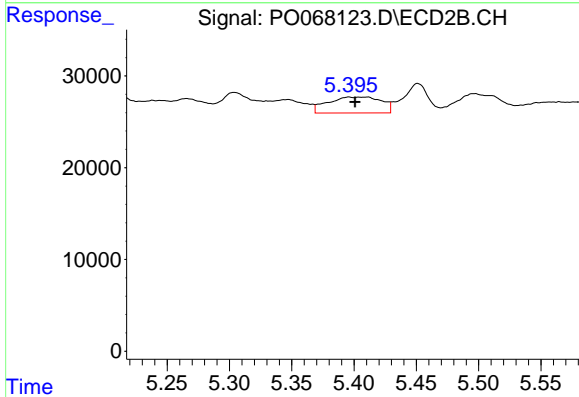


#4 AR-1016-2
 R.T.: 5.210 min
 Delta R.T.: 0.000 min
 Response: 52251
 Conc: 28.81 ng/ml

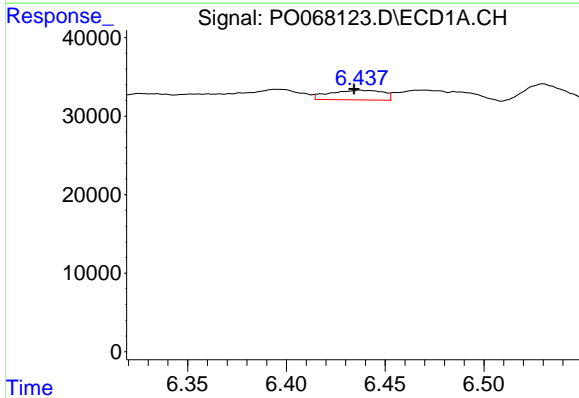


#5 AR-1016-3
 R.T.: 6.328 min
 Delta R.T.: 0.000 min
 Response: 8949
 Conc: 10.35 ng/ml

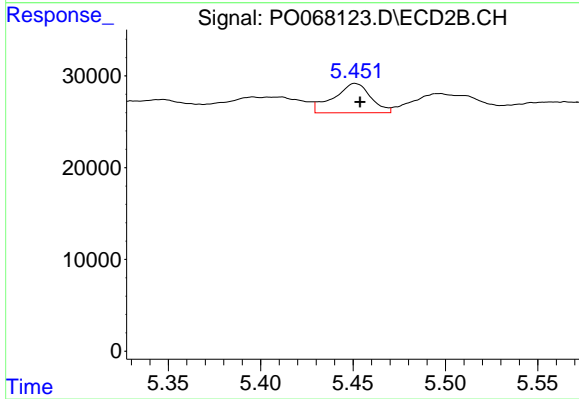
Instrument :
 ECD_O
 ClientSampled :



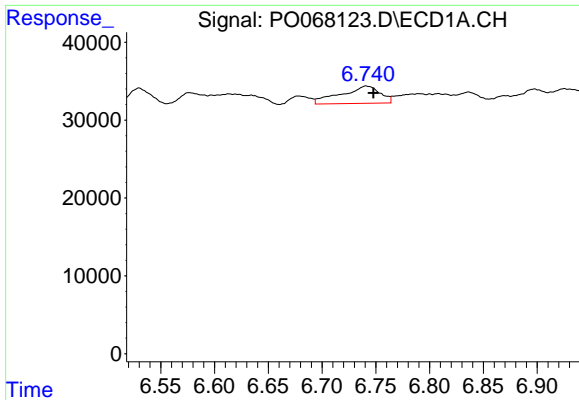
#5 AR-1016-3
 R.T.: 5.397 min
 Delta R.T.: -0.004 min
 Response: 52025
 Conc: 51.65 ng/ml



#6 AR-1016-4
 R.T.: 6.438 min
 Delta R.T.: 0.004 min
 Response: 23175
 Conc: 32.81 ng/ml



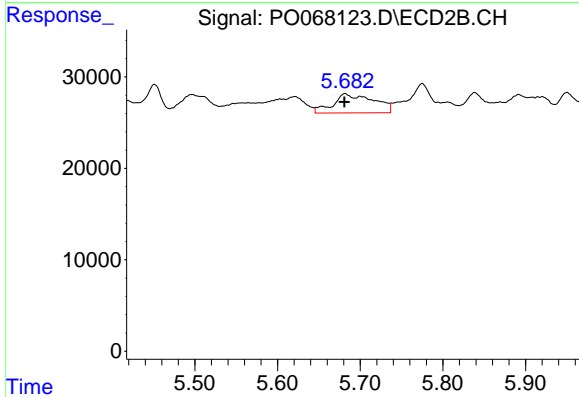
#6 AR-1016-4
 R.T.: 5.451 min
 Delta R.T.: -0.003 min
 Response: 44543
 Conc: 52.53 ng/ml



#7 AR-1016-5

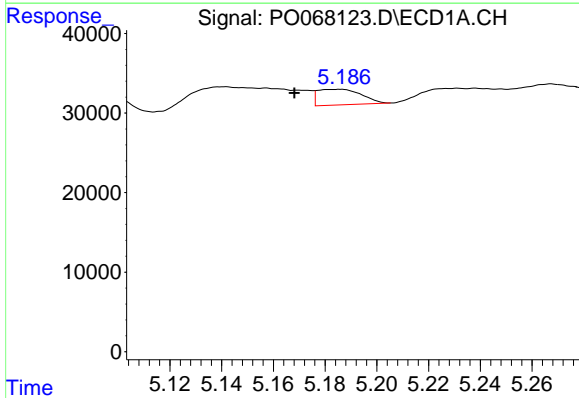
R.T.: 6.742 min
 Delta R.T.: -0.006 min
 Response: 55971
 Conc: 78.56 ng/ml

Instrument :
 ECD_O
 ClientSampleId :



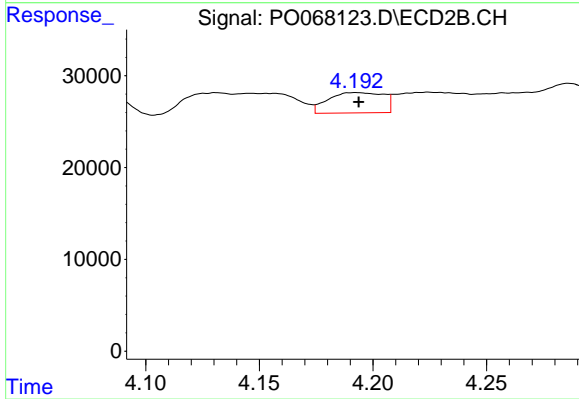
#7 AR-1016-5

R.T.: 5.682 min
 Delta R.T.: 0.000 min
 Response: 71352
 Conc: 66.07 ng/ml



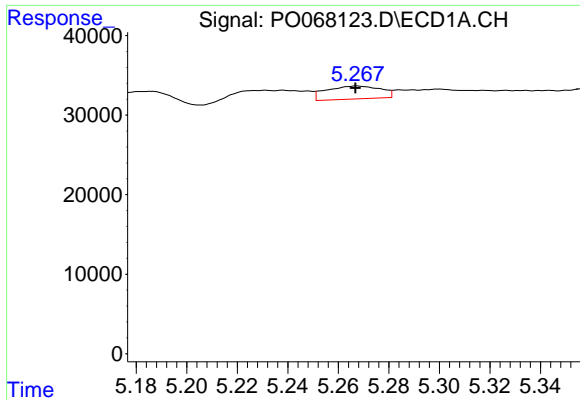
#8 AR-1221-1

R.T.: 5.184 min
 Delta R.T.: 0.016 min
 Response: 22977
 Conc: 67.35 ng/ml



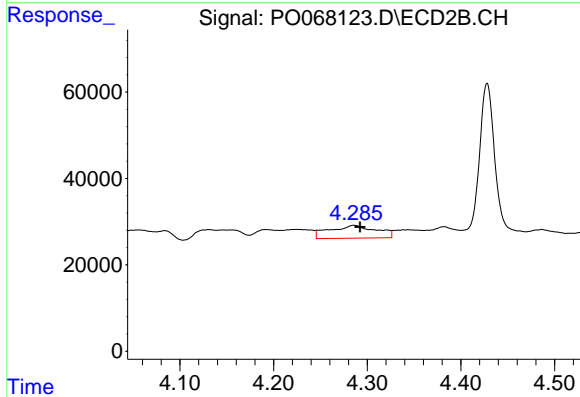
#8 AR-1221-1

R.T.: 4.193 min
 Delta R.T.: 0.000 min
 Response: 37614
 Conc: 76.65 ng/ml

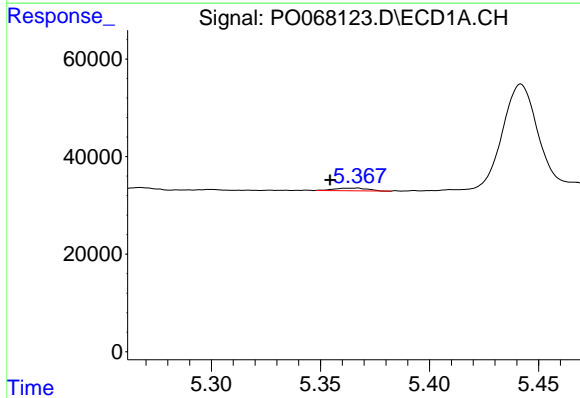


#9 AR-1221-2
 R.T.: 5.267 min
 Delta R.T.: 0.000 min
 Response: 24125
 Conc: 92.04 ng/ml

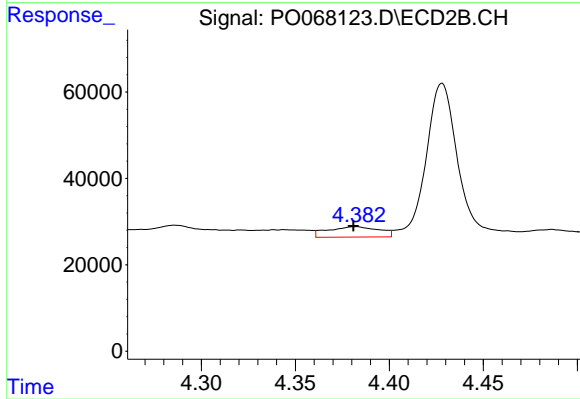
Instrument :
 ECD_O
 ClientSampled :



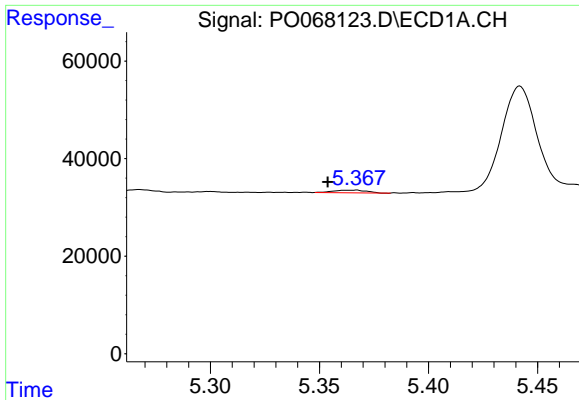
#9 AR-1221-2
 R.T.: 4.286 min
 Delta R.T.: -0.006 min
 Response: 102929
 Conc: 277.65 ng/ml



#10 AR-1221-3
 R.T.: 5.364 min
 Delta R.T.: 0.010 min
 Response: 5870
 Conc: 6.88 ng/ml

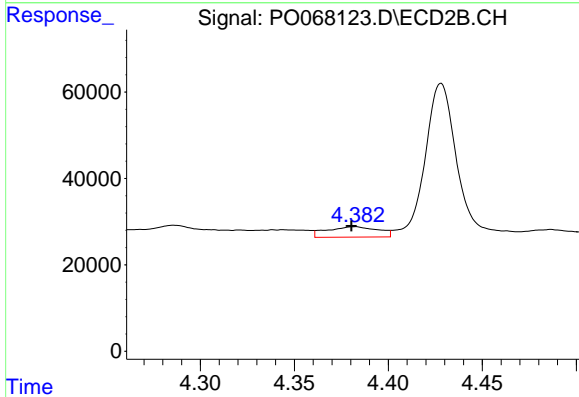


#10 AR-1221-3
 R.T.: 4.382 min
 Delta R.T.: 0.001 min
 Response: 45734
 Conc: 40.68 ng/ml

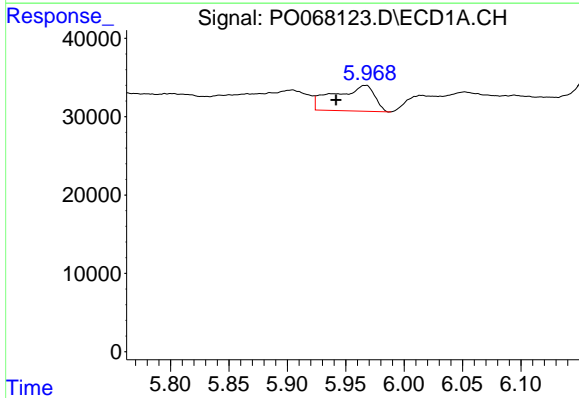


#11 AR-1232-1
 R.T.: 5.364 min
 Delta R.T.: 0.011 min
 Response: 5870
 Conc: 10.31 ng/ml

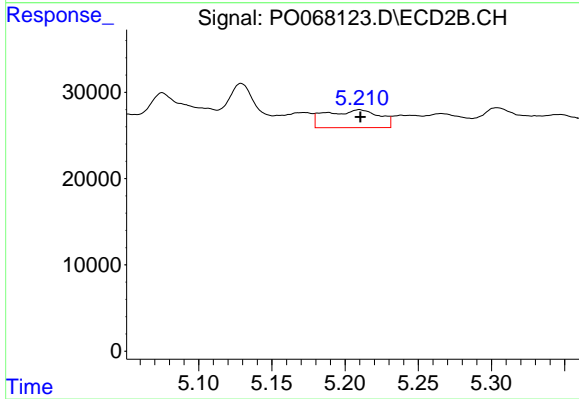
Instrument :
 ECD_O
 ClientSampleId :



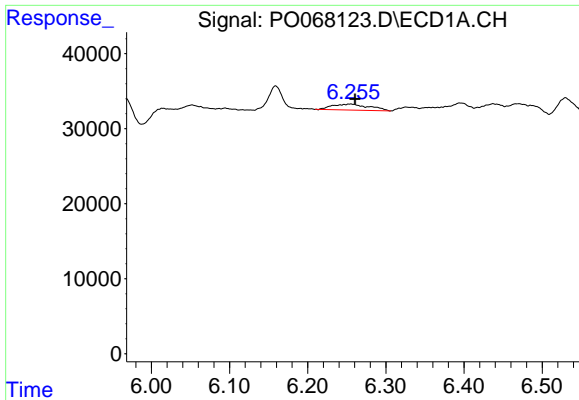
#11 AR-1232-1
 R.T.: 4.382 min
 Delta R.T.: 0.001 min
 Response: 45734
 Conc: 59.72 ng/ml



#12 AR-1232-2
 R.T.: 5.966 min
 Delta R.T.: 0.024 min
 Response: 78284
 Conc: 269.66 ng/ml



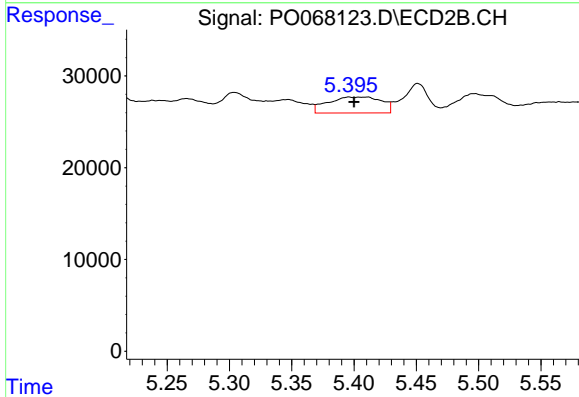
#12 AR-1232-2
 R.T.: 5.210 min
 Delta R.T.: 0.000 min
 Response: 52251
 Conc: 65.55 ng/ml



#13 AR-1232-3

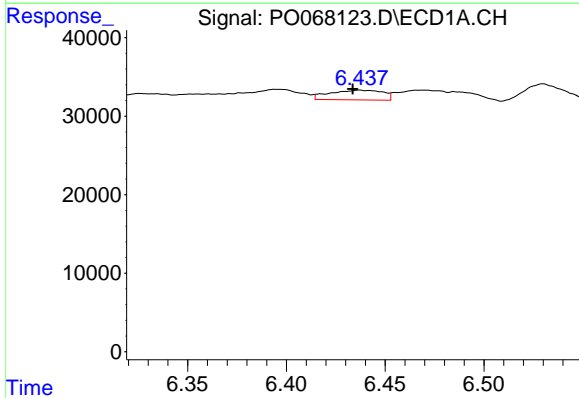
R.T.: 6.255 min
 Delta R.T.: -0.005 min
 Response: 26510
 Conc: 43.44 ng/ml

Instrument :
 ECD_O
 ClientSampleId :



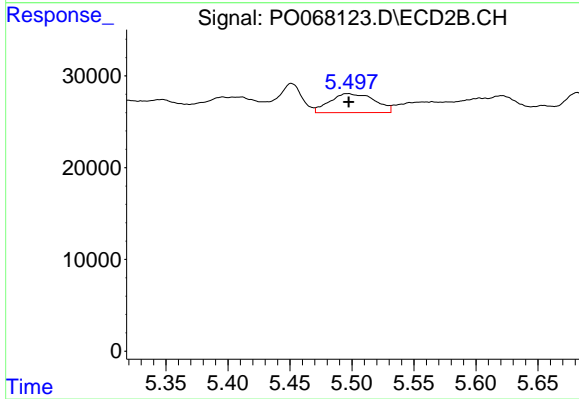
#13 AR-1232-3

R.T.: 5.397 min
 Delta R.T.: -0.003 min
 Response: 52025
 Conc: 121.08 ng/ml



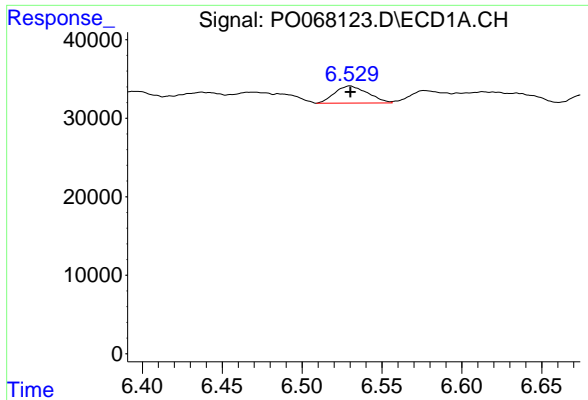
#14 AR-1232-4

R.T.: 6.438 min
 Delta R.T.: 0.005 min
 Response: 23175
 Conc: 76.70 ng/ml



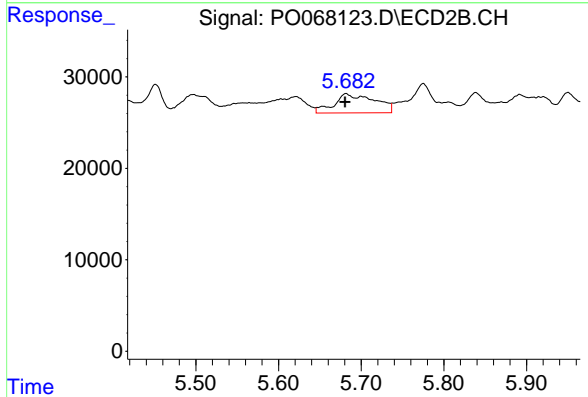
#14 AR-1232-4

R.T.: 5.497 min
 Delta R.T.: 0.000 min
 Response: 51952
 Conc: 132.67 ng/ml

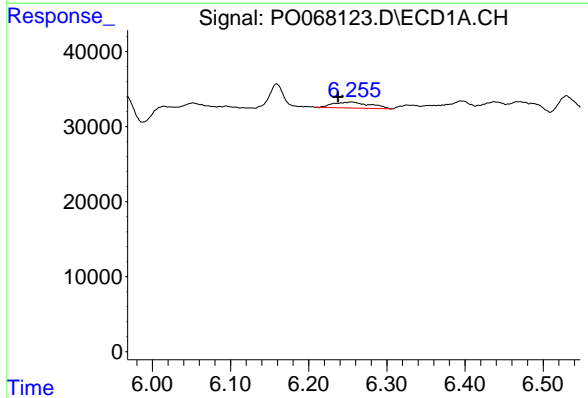


#15 AR-1232-5
 R.T.: 6.530 min
 Delta R.T.: 0.000 min
 Response: 31364
 Conc: 149.17 ng/ml

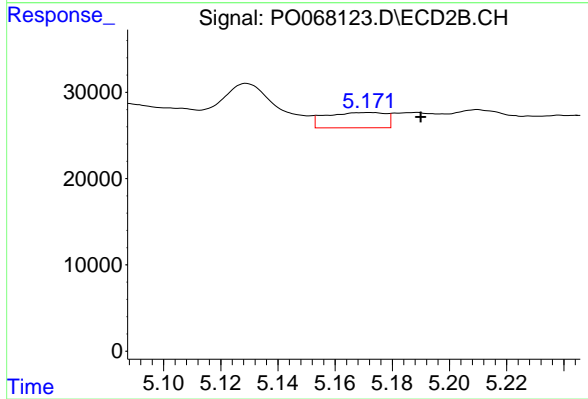
Instrument :
 ECD_O
 ClientSampleId :



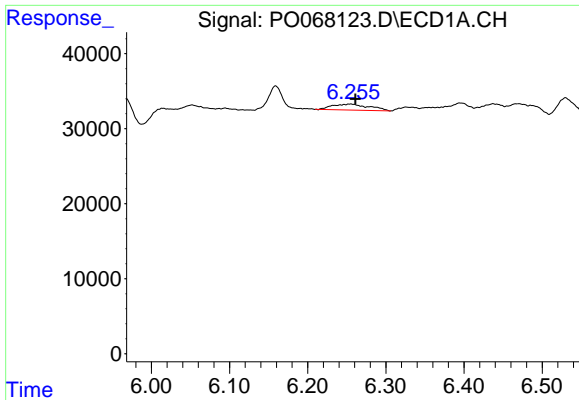
#15 AR-1232-5
 R.T.: 5.682 min
 Delta R.T.: 0.001 min
 Response: 71352
 Conc: 163.24 ng/ml



#16 AR-1242-1
 R.T.: 6.255 min
 Delta R.T.: 0.018 min
 Response: 26510
 Conc: 32.90 ng/ml



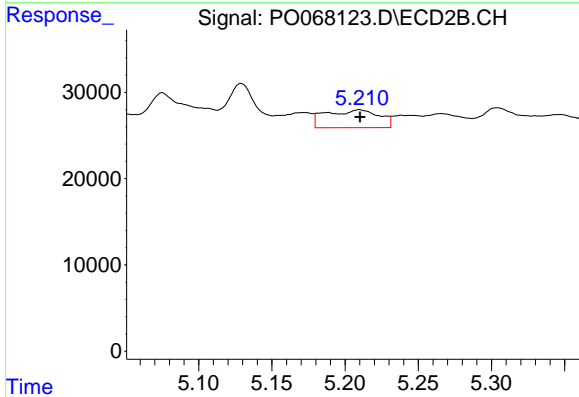
#16 AR-1242-1
 R.T.: 5.171 min
 Delta R.T.: -0.019 min
 Response: 25771
 Conc: 24.36 ng/ml



#17 AR-1242-2

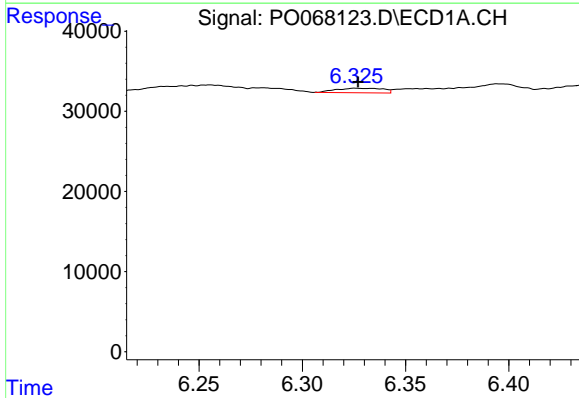
R.T.: 6.255 min
 Delta R.T.: -0.006 min
 Response: 26510
 Conc: 24.04 ng/ml

Instrument :
 ECD_O
 ClientSampled :



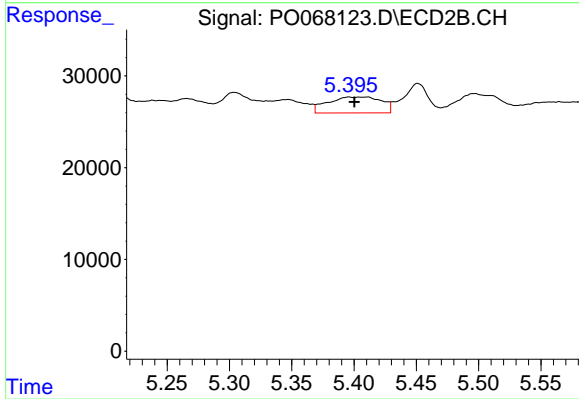
#17 AR-1242-2

R.T.: 5.210 min
 Delta R.T.: 0.000 min
 Response: 52251
 Conc: 37.23 ng/ml



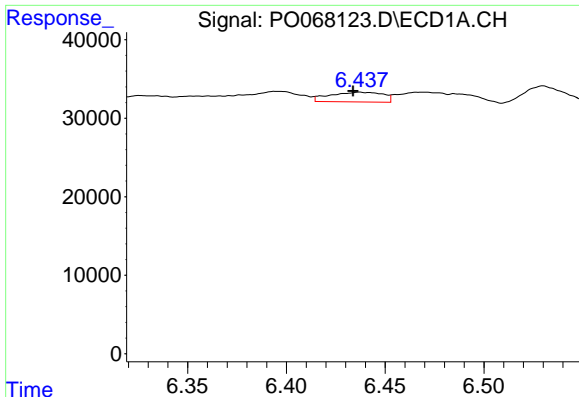
#18 AR-1242-3

R.T.: 6.328 min
 Delta R.T.: 0.000 min
 Response: 8949
 Conc: 13.00 ng/ml



#18 AR-1242-3

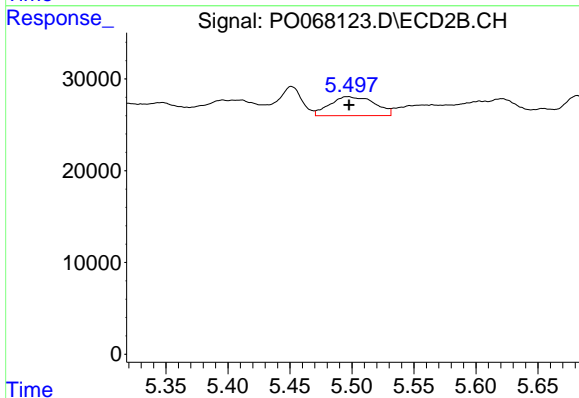
R.T.: 5.397 min
 Delta R.T.: -0.004 min
 Response: 52025
 Conc: 66.10 ng/ml



#19 AR-1242-4

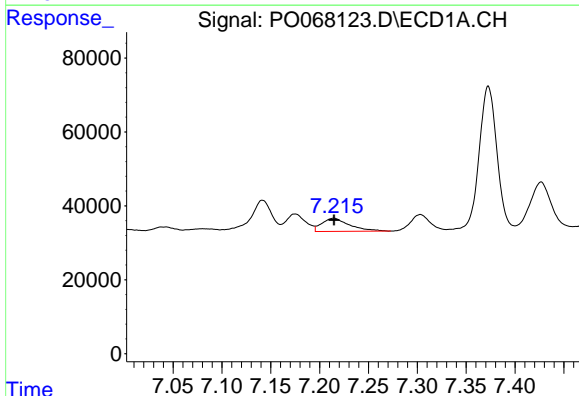
R.T.: 6.438 min
 Delta R.T.: 0.004 min
 Response: 23175
 Conc: 41.08 ng/ml

Instrument :
 ECD_O
 ClientSampled :



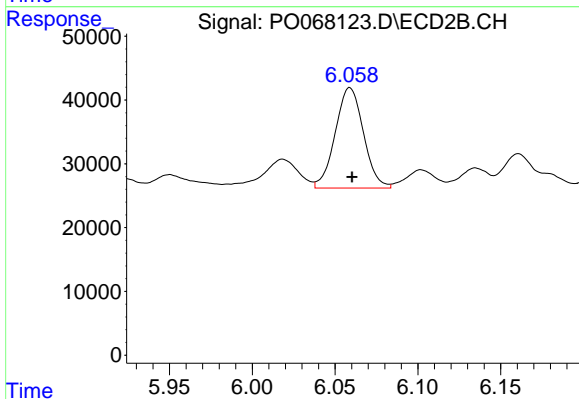
#19 AR-1242-4

R.T.: 5.497 min
 Delta R.T.: 0.000 min
 Response: 51952
 Conc: 66.23 ng/ml



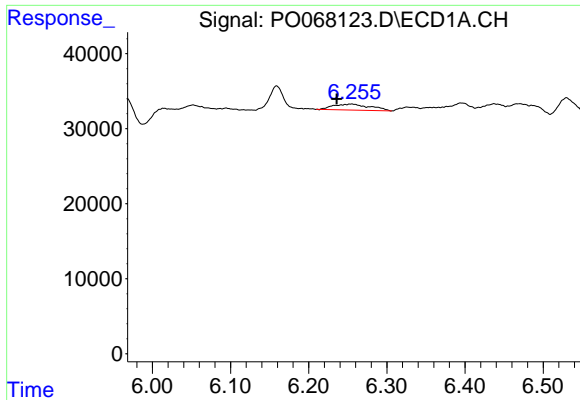
#20 AR-1242-5

R.T.: 7.214 min
 Delta R.T.: 0.000 min
 Response: 70442
 Conc: 105.87 ng/ml



#20 AR-1242-5

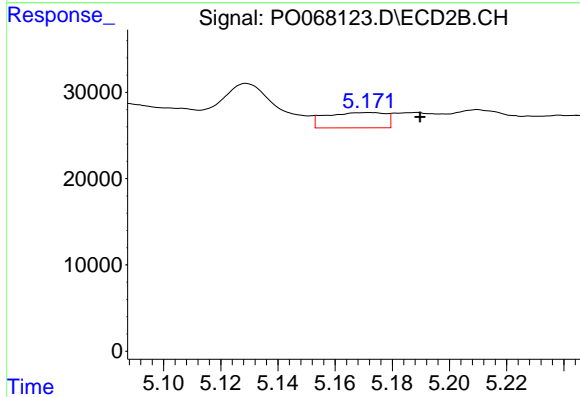
R.T.: 6.059 min
 Delta R.T.: -0.001 min
 Response: 186534
 Conc: 180.85 ng/ml



#21 AR-1248-1

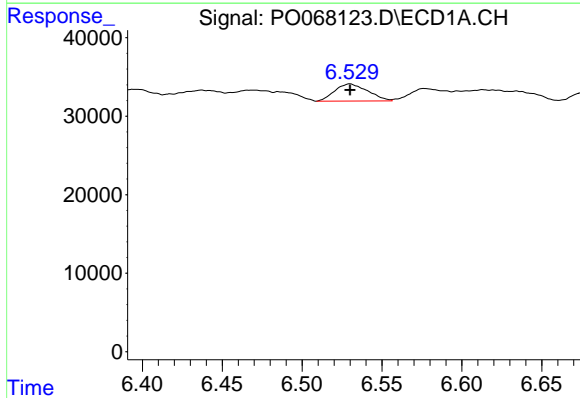
R.T.: 6.255 min
 Delta R.T.: 0.019 min
 Response: 26510
 Conc: 43.06 ng/ml

Instrument :
 ECD_O
 ClientSampled :



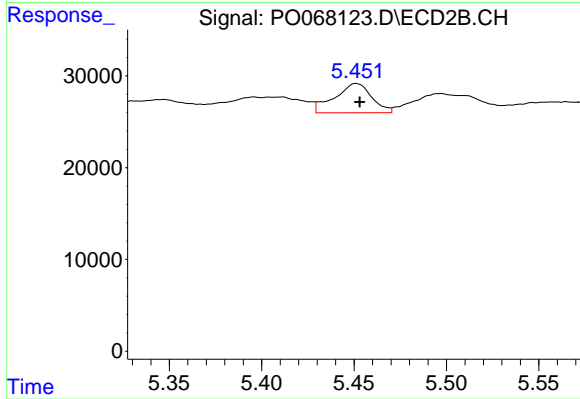
#21 AR-1248-1

R.T.: 5.171 min
 Delta R.T.: -0.019 min
 Response: 25771
 Conc: 30.67 ng/ml



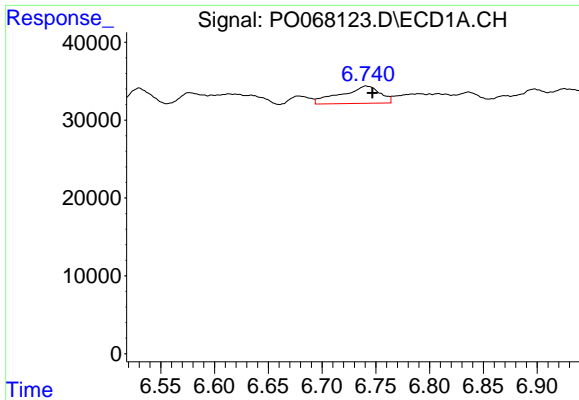
#22 AR-1248-2

R.T.: 6.530 min
 Delta R.T.: 0.000 min
 Response: 31364
 Conc: 39.45 ng/ml



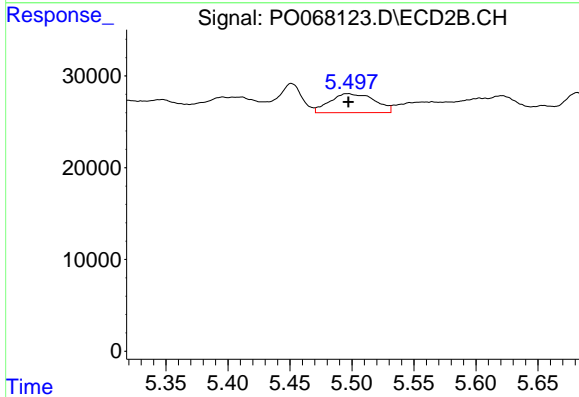
#22 AR-1248-2

R.T.: 5.451 min
 Delta R.T.: -0.002 min
 Response: 44543
 Conc: 40.99 ng/ml

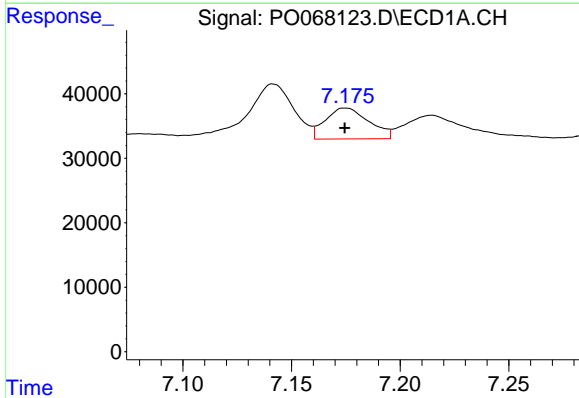


#23 AR-1248-3
 R.T.: 6.742 min
 Delta R.T.: -0.005 min
 Response: 55971
 Conc: 60.11 ng/ml

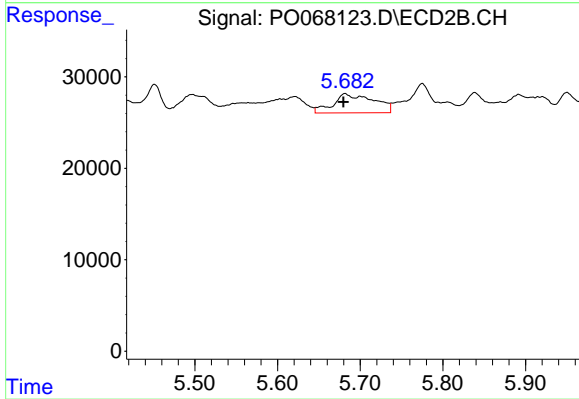
Instrument :
 ECD_O
 ClientSampleId :



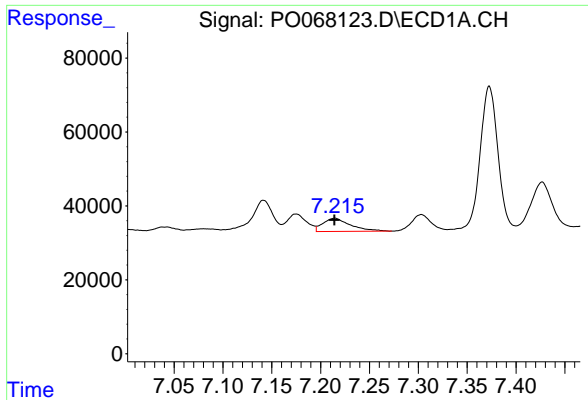
#23 AR-1248-3
 R.T.: 5.497 min
 Delta R.T.: 0.000 min
 Response: 51952
 Conc: 47.42 ng/ml



#24 AR-1248-4
 R.T.: 7.175 min
 Delta R.T.: 0.000 min
 Response: 66878
 Conc: 59.85 ng/ml

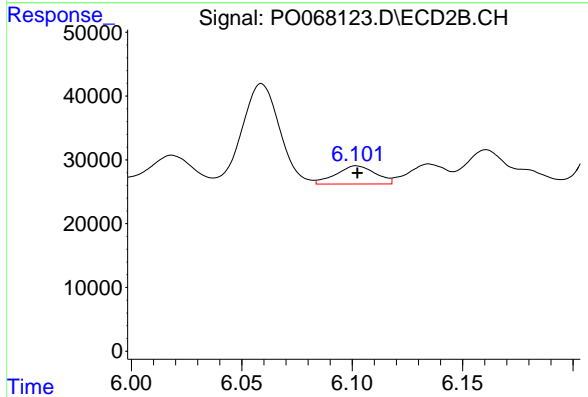


#24 AR-1248-4
 R.T.: 5.682 min
 Delta R.T.: 0.002 min
 Response: 71352
 Conc: 53.44 ng/ml

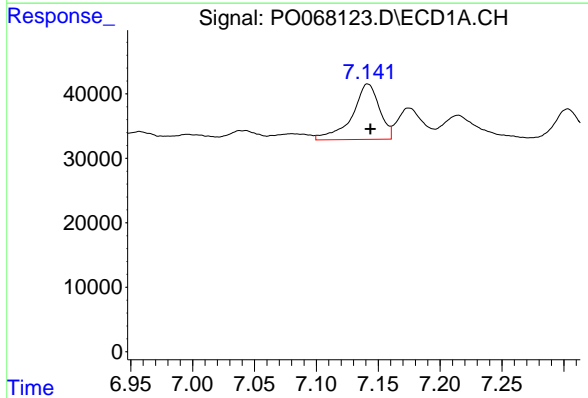


#25 AR-1248-5
 R.T.: 7.214 min
 Delta R.T.: 0.000 min
 Response: 70442
 Conc: 66.02 ng/ml

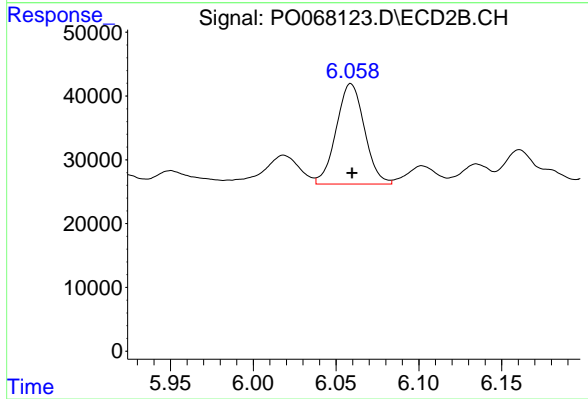
Instrument :
 ECD_O
 ClientSampleId :



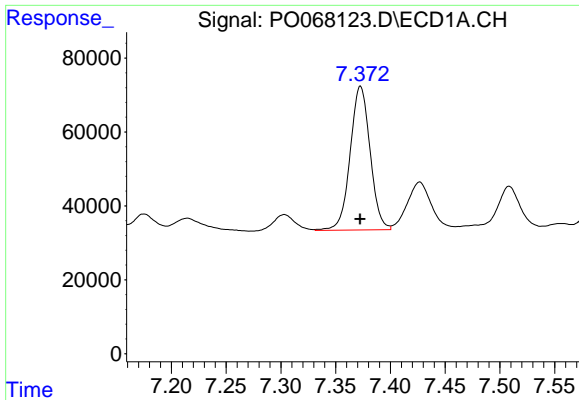
#25 AR-1248-5
 R.T.: 6.102 min
 Delta R.T.: 0.000 min
 Response: 35485
 Conc: 26.21 ng/ml



#26 AR-1254-1
 R.T.: 7.142 min
 Delta R.T.: -0.002 min
 Response: 132533
 Conc: 119.82 ng/ml

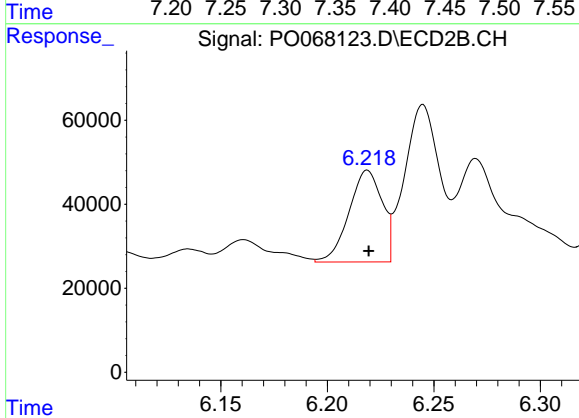


#26 AR-1254-1
 R.T.: 6.059 min
 Delta R.T.: 0.000 min
 Response: 186534
 Conc: 90.92 ng/ml

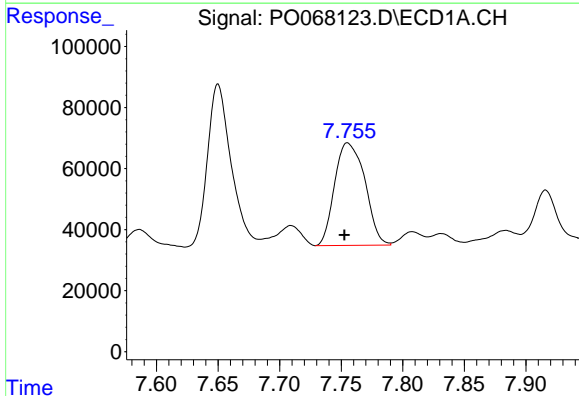


#27 AR-1254-2
 R.T.: 7.373 min
 Delta R.T.: 0.000 min
 Response: 493036
 Conc: 284.60 ng/ml

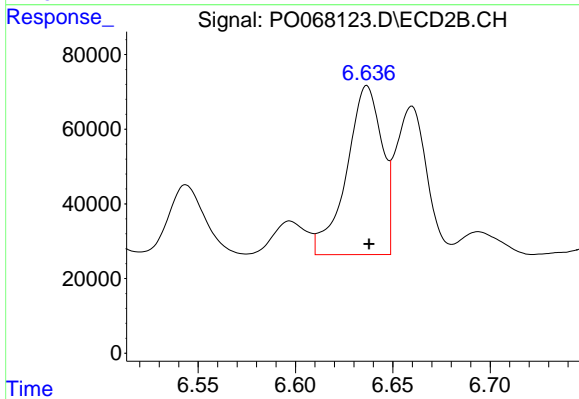
Instrument :
 ECD_O
 ClientSampleId :



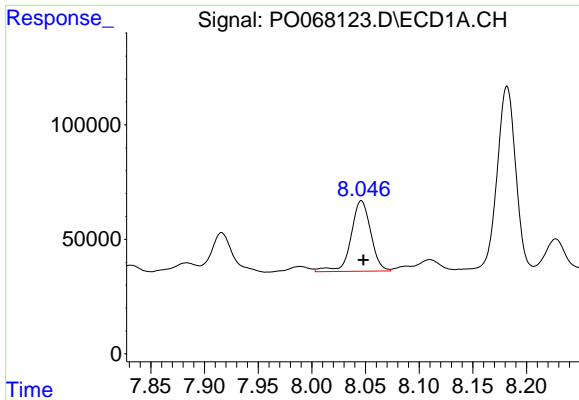
#27 AR-1254-2
 R.T.: 6.219 min
 Delta R.T.: 0.000 min
 Response: 236562
 Conc: 128.96 ng/ml



#28 AR-1254-3
 R.T.: 7.756 min
 Delta R.T.: 0.003 min
 Response: 575320
 Conc: 312.14 ng/ml



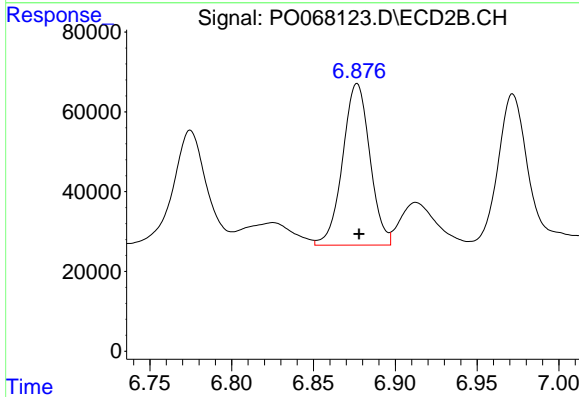
#28 AR-1254-3
 R.T.: 6.637 min
 Delta R.T.: -0.001 min
 Response: 572575
 Conc: 192.16 ng/ml



#29 AR-1254-4

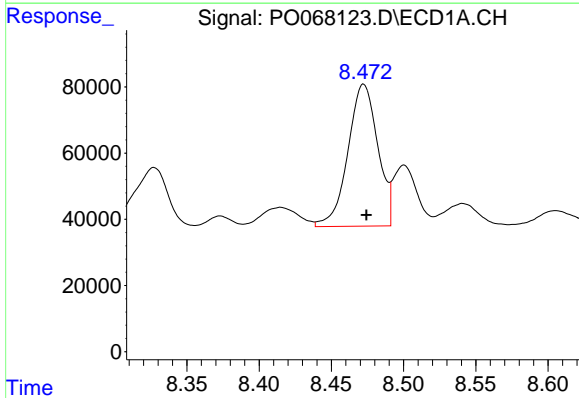
R.T.: 8.046 min
 Delta R.T.: -0.002 min
 Response: 394412
 Conc: 273.35 ng/ml

Instrument :
 ECD_O
 ClientSampled :



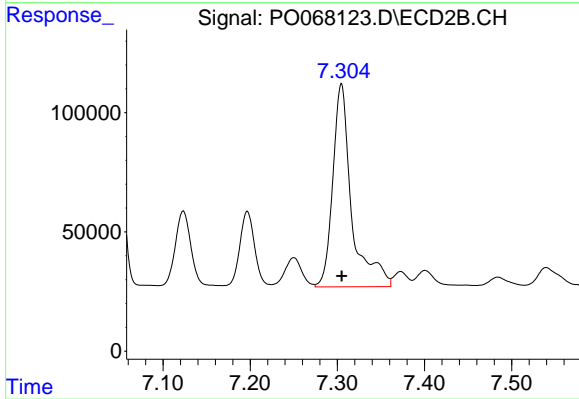
#29 AR-1254-4

R.T.: 6.877 min
 Delta R.T.: -0.001 min
 Response: 469984
 Conc: 234.90 ng/ml



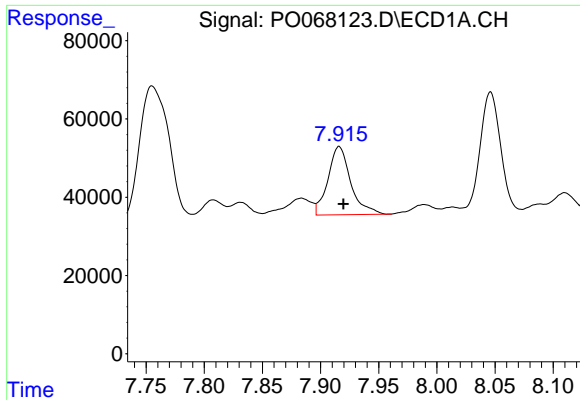
#30 AR-1254-5

R.T.: 8.472 min
 Delta R.T.: -0.002 min
 Response: 618102
 Conc: 412.80 ng/ml



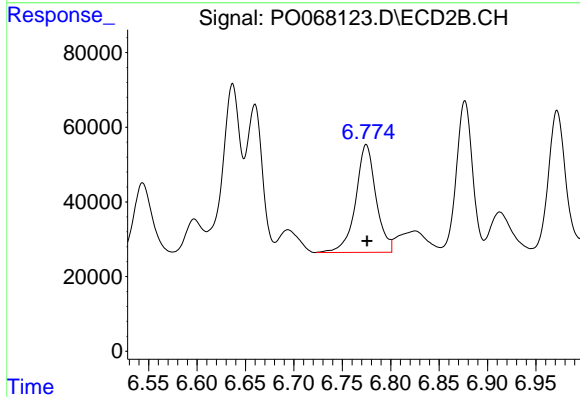
#30 AR-1254-5

R.T.: 7.305 min
 Delta R.T.: 0.000 min
 Response: 1281597
 Conc: 457.92 ng/ml

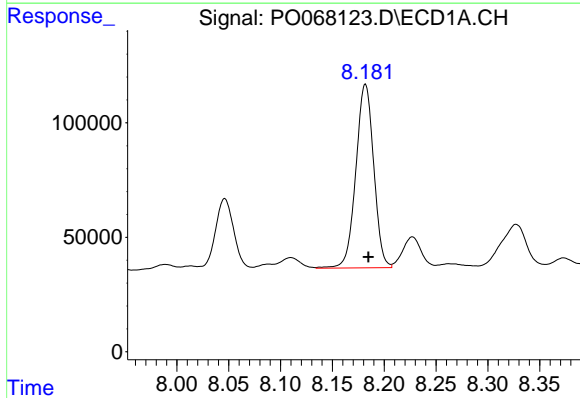


#31 AR-1260-1
 R.T.: 7.916 min
 Delta R.T.: -0.004 min
 Response: 237866
 Conc: 188.47 ng/ml

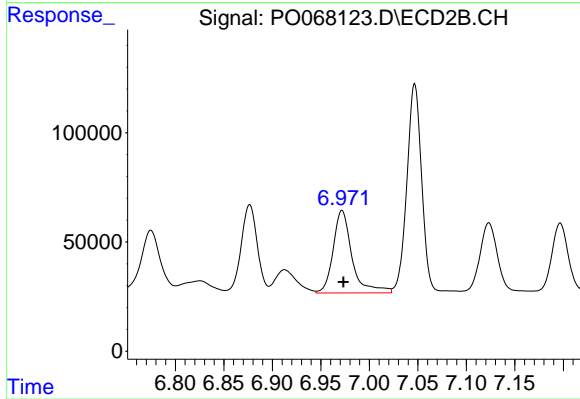
Instrument :
 ECD_O
 ClientSampled :



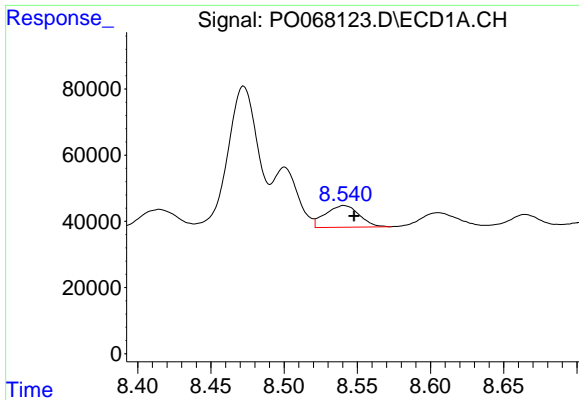
#31 AR-1260-1
 R.T.: 6.775 min
 Delta R.T.: 0.000 min
 Response: 422268
 Conc: 210.05 ng/ml



#32 AR-1260-2
 R.T.: 8.182 min
 Delta R.T.: -0.003 min
 Response: 963302
 Conc: 615.34 ng/ml



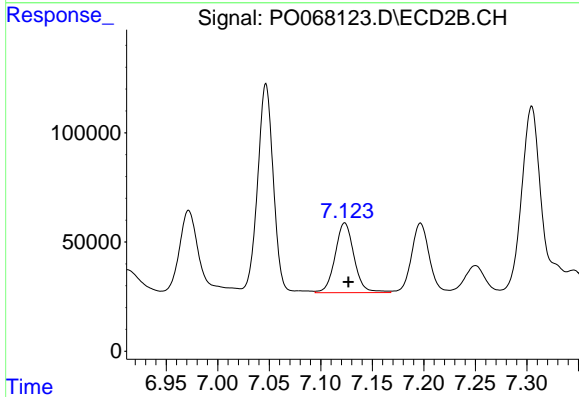
#32 AR-1260-2
 R.T.: 6.972 min
 Delta R.T.: -0.001 min
 Response: 512680
 Conc: 207.26 ng/ml



#33 AR-1260-3

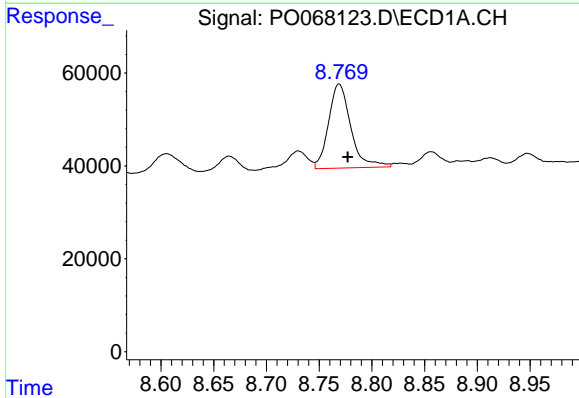
R.T.: 8.541 min
 Delta R.T.: -0.007 min
 Response: 105051
 Conc: 83.47 ng/ml

Instrument :
 ECD_O
 ClientSampleId :



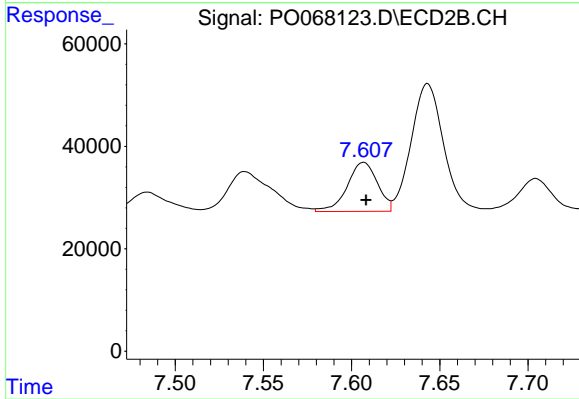
#33 AR-1260-3

R.T.: 7.123 min
 Delta R.T.: -0.004 min
 Response: 408725
 Conc: 177.69 ng/ml



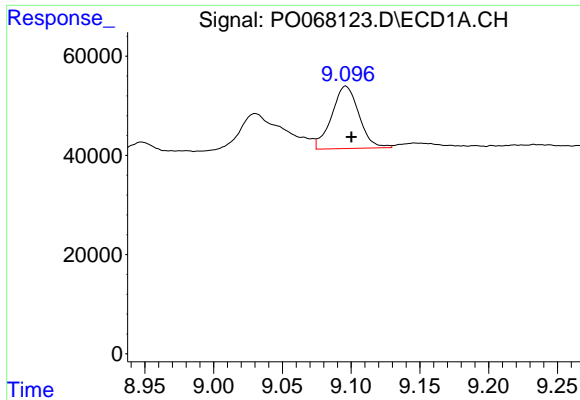
#34 AR-1260-4

R.T.: 8.769 min
 Delta R.T.: -0.008 min
 Response: 266214
 Conc: 191.42 ng/ml



#34 AR-1260-4

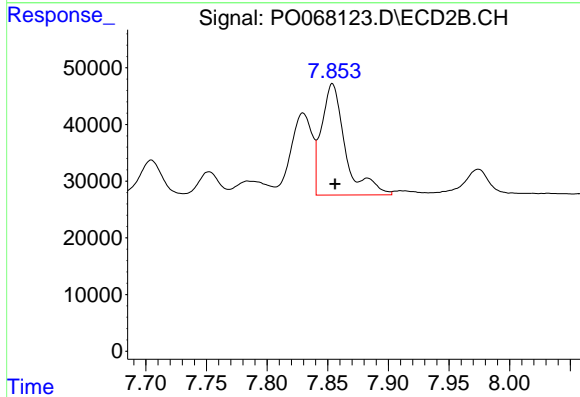
R.T.: 7.607 min
 Delta R.T.: -0.001 min
 Response: 114209
 Conc: 57.01 ng/ml



#35 AR-1260-5

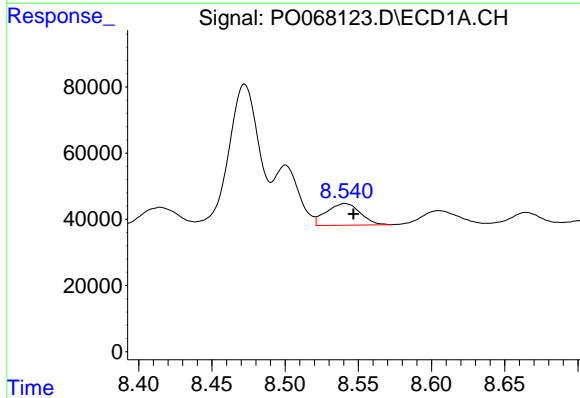
R.T.: 9.096 min
 Delta R.T.: -0.004 min
 Response: 173319
 Conc: 59.44 ng/ml

Instrument :
 ECD_O
 ClientSampleId :



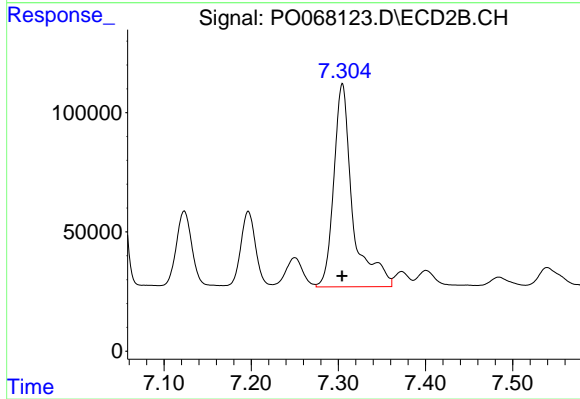
#35 AR-1260-5

R.T.: 7.854 min
 Delta R.T.: -0.002 min
 Response: 269279
 Conc: 57.64 ng/ml



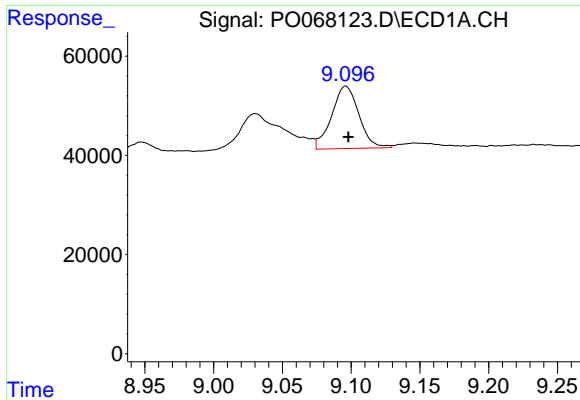
#36 AR-1262-1

R.T.: 8.541 min
 Delta R.T.: -0.006 min
 Response: 105051
 Conc: 57.52 ng/ml



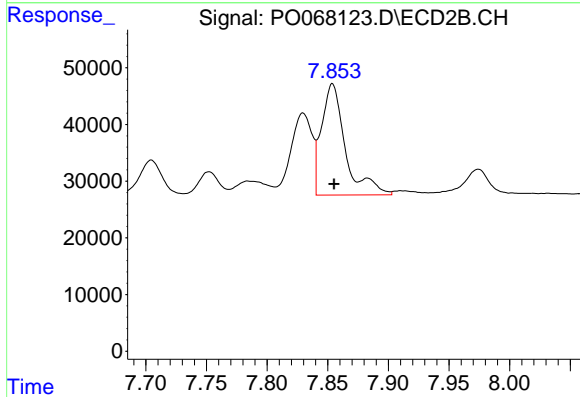
#36 AR-1262-1

R.T.: 7.305 min
 Delta R.T.: 0.000 min
 Response: 1281597
 Conc: 853.42 ng/ml

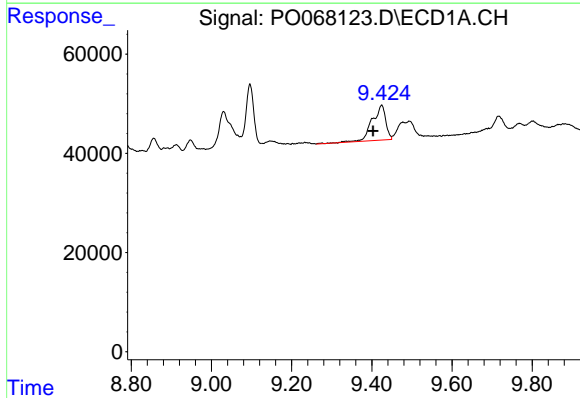


#37 AR-1262-2
 R.T.: 9.096 min
 Delta R.T.: -0.002 min
 Response: 173319
 Conc: 52.41 ng/ml

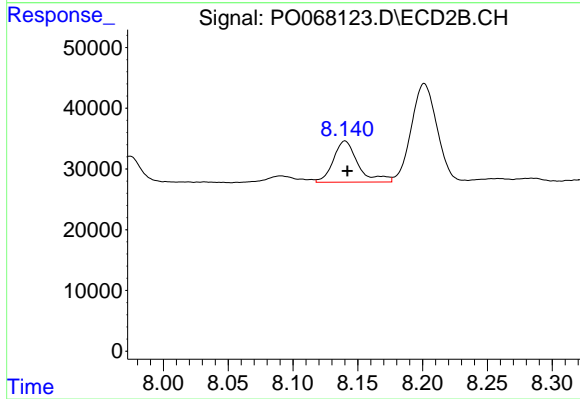
Instrument :
 ECD_O
 ClientSampleId :



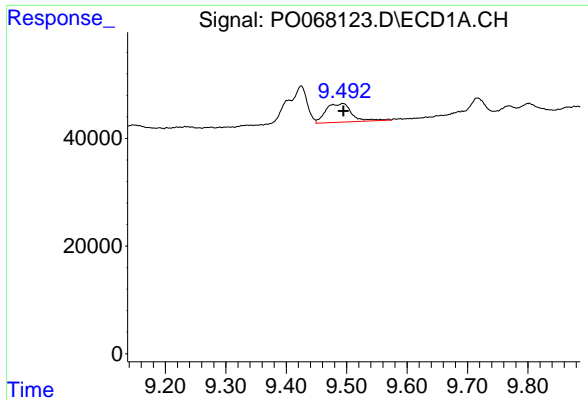
#37 AR-1262-2
 R.T.: 7.854 min
 Delta R.T.: -0.001 min
 Response: 269279
 Conc: 54.45 ng/ml



#38 AR-1262-3
 R.T.: 9.424 min
 Delta R.T.: 0.022 min
 Response: 166203
 Conc: 69.34 ng/ml

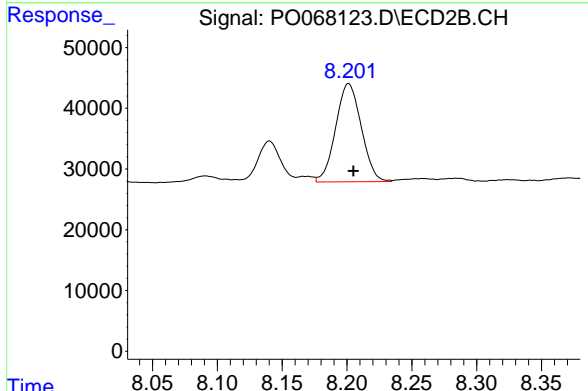


#38 AR-1262-3
 R.T.: 8.140 min
 Delta R.T.: -0.002 min
 Response: 90399
 Conc: 44.79 ng/ml

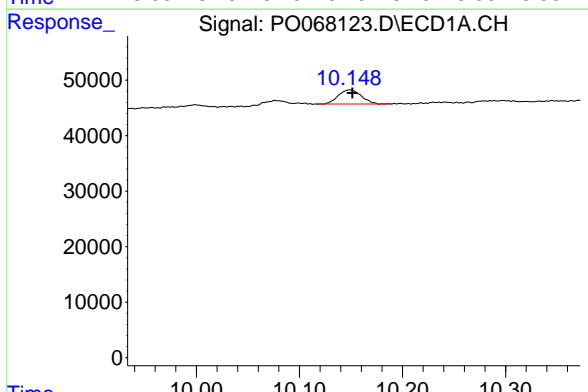


#39 AR-1262-4
 R.T.: 9.494 min
 Delta R.T.: -0.001 min
 Response: 103467
 Conc: 54.55 ng/ml

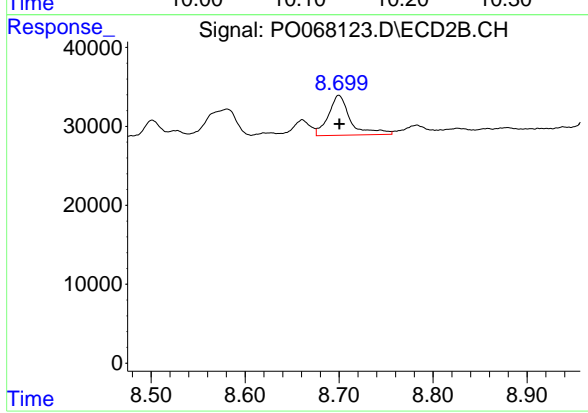
Instrument :
 ECD_O
 ClientSampleId :



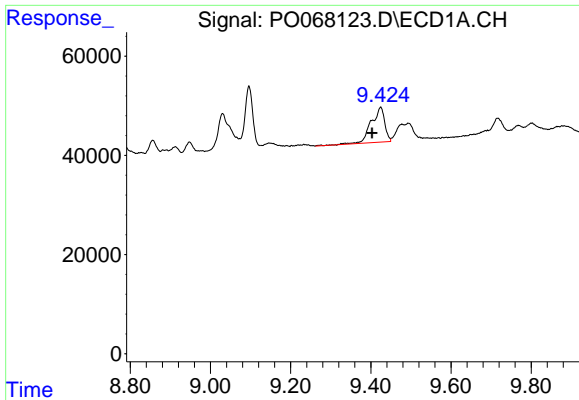
#39 AR-1262-4
 R.T.: 8.201 min
 Delta R.T.: -0.004 min
 Response: 222347
 Conc: 60.45 ng/ml



#40 AR-1262-5
 R.T.: 10.149 min
 Delta R.T.: -0.002 min
 Response: 39260
 Conc: 27.98 ng/ml



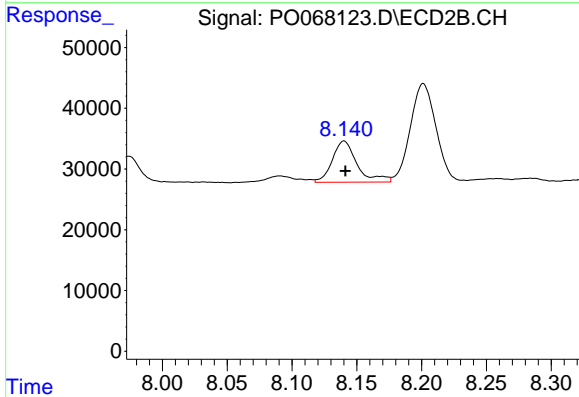
#40 AR-1262-5
 R.T.: 8.700 min
 Delta R.T.: 0.000 min
 Response: 82706
 Conc: 46.72 ng/ml



#41 AR-1268-1

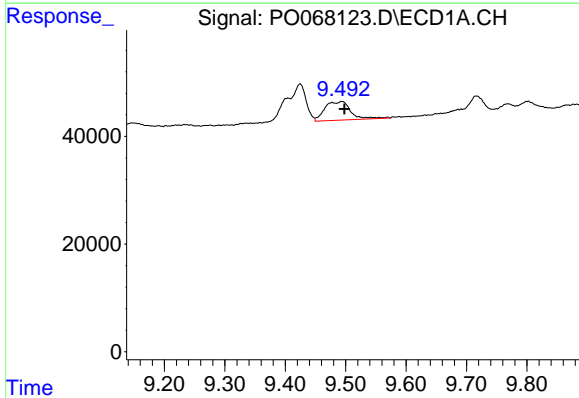
R.T.: 9.424 min
 Delta R.T.: 0.022 min
 Response: 166203
 Conc: 39.77 ng/ml

Instrument :
 ECD_O
 ClientSampled :



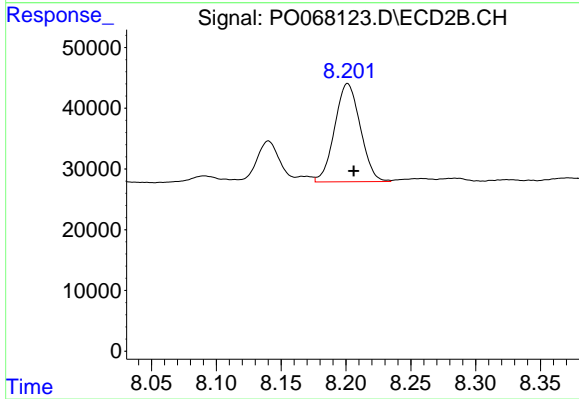
#41 AR-1268-1

R.T.: 8.140 min
 Delta R.T.: -0.001 min
 Response: 90399
 Conc: 15.42 ng/ml



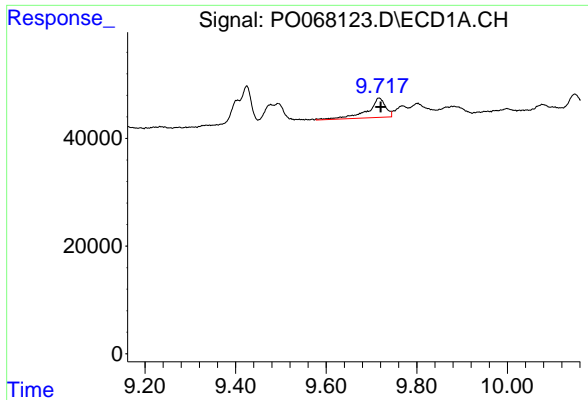
#42 AR-1268-2

R.T.: 9.494 min
 Delta R.T.: -0.004 min
 Response: 103467
 Conc: 25.59 ng/ml



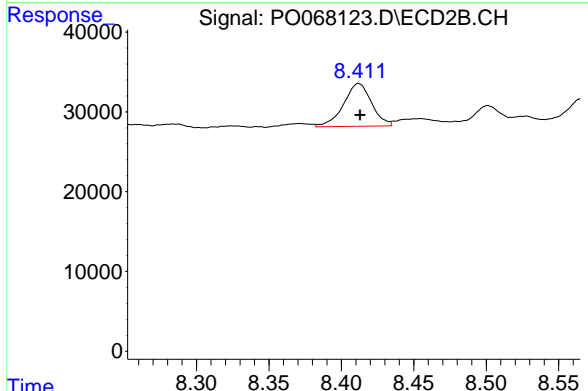
#42 AR-1268-2

R.T.: 8.201 min
 Delta R.T.: -0.005 min
 Response: 222347
 Conc: 41.78 ng/ml

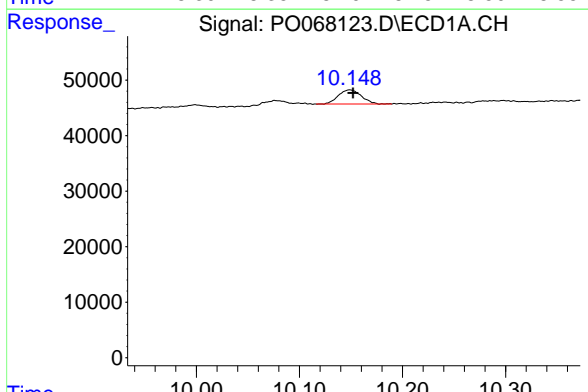


#43 AR-1268-3
 R.T.: 9.717 min
 Delta R.T.: -0.003 min
 Response: 99200
 Conc: 28.82 ng/ml

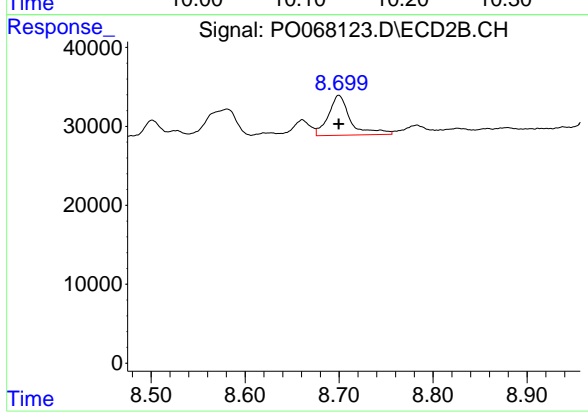
Instrument :
 ECD_O
 ClientSampled :



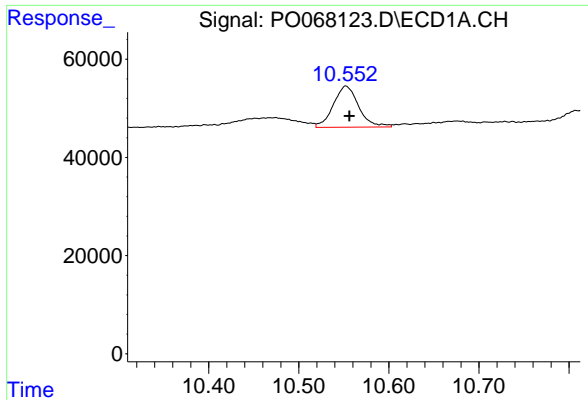
#43 AR-1268-3
 R.T.: 8.412 min
 Delta R.T.: -0.001 min
 Response: 72175
 Conc: 16.63 ng/ml



#44 AR-1268-4
 R.T.: 10.149 min
 Delta R.T.: -0.003 min
 Response: 39260
 Conc: 24.49 ng/ml



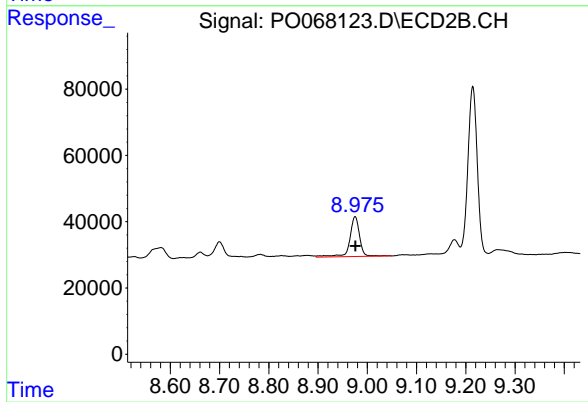
#44 AR-1268-4
 R.T.: 8.700 min
 Delta R.T.: 0.000 min
 Response: 82706
 Conc: 40.29 ng/ml



#45 AR-1268-5

R.T.: 10.552 min
Delta R.T.: -0.004 min
Response: 163444
Conc: 13.83 ng/ml

Instrument :
ECD_O
ClientSampleId :



#45 AR-1268-5

R.T.: 8.975 min
Delta R.T.: 0.000 min
Response: 166130
Conc: 12.43 ng/ml