

Data Path : Z:\pestpcbsrv\HPCHEM1\ECD_0\Data\P0050120\
 Data File : P0068123.D
 Signal(s) : Signal #1: ECD1A.CH Signal #2: ECD2B.CH
 Acq On : 01 May 2020 15:04
 Operator : DD\AJ
 Sample : L2463-01
 Misc :
 ALS Vial : 21 Sample Multiplier: 1

Instrument :
 ECD_0
ClientSampleId :
 AOC14-CARWASH

Manual Integrations
APPROVED
 Sohil
 5/4/2020 8:12:13 AM

Integration File signal 1: autoint1.e
 Integration File signal 2: autoint2.e
 Quant Time: May 02 04:44:11 2020
 Quant Method : Z:\pestpcbsrv\HPCHEM1\ECD_0\methods\P0042720.M
 Quant Title : GC EXTRACTABLES
 QLast Update : Tue Apr 28 07:12:58 2020
 Response via : Initial Calibration
 Integrator: ChemStation 6890 Scale Mode: Small noise peaks clipped

Volume Inj. : 2 µl
 Signal #1 Phase : ZB-MR1 Signal #2 Phase: ZB-MR2
 Signal #1 Info : 30Mx0.32mmx 0.50µ Signal #2 Info : 30M x 0.32mm x 0.25µm

Compound	RT#1	RT#2	Resp#1	Resp#2	ng/ml	ng/ml

System Monitoring Compounds						
1) SA Tetrachlo...	4.914	3.935	584549	799984	24.428	25.035m
2) SA Decachlor...	10.882	9.214	714250	662776	18.926	17.173m
Target Compounds						
26) L6 AR-1254-1	7.142	6.059	132533	186534	119.816	90.923
27) L6 AR-1254-2	7.373	6.219	493036	236562	284.599	128.958 #
28) L6 AR-1254-3	7.756	6.637	575320	572575	312.139	192.157 #
29) L6 AR-1254-4	8.046	6.877	394412	469984	273.350	234.900
30) L6 AR-1254-5	8.472	7.304	618102	1095566	412.802	391.453m

(f)=RT Delta > 1/2 Window (#)=Amounts differ by > 25% (m)=manual int.

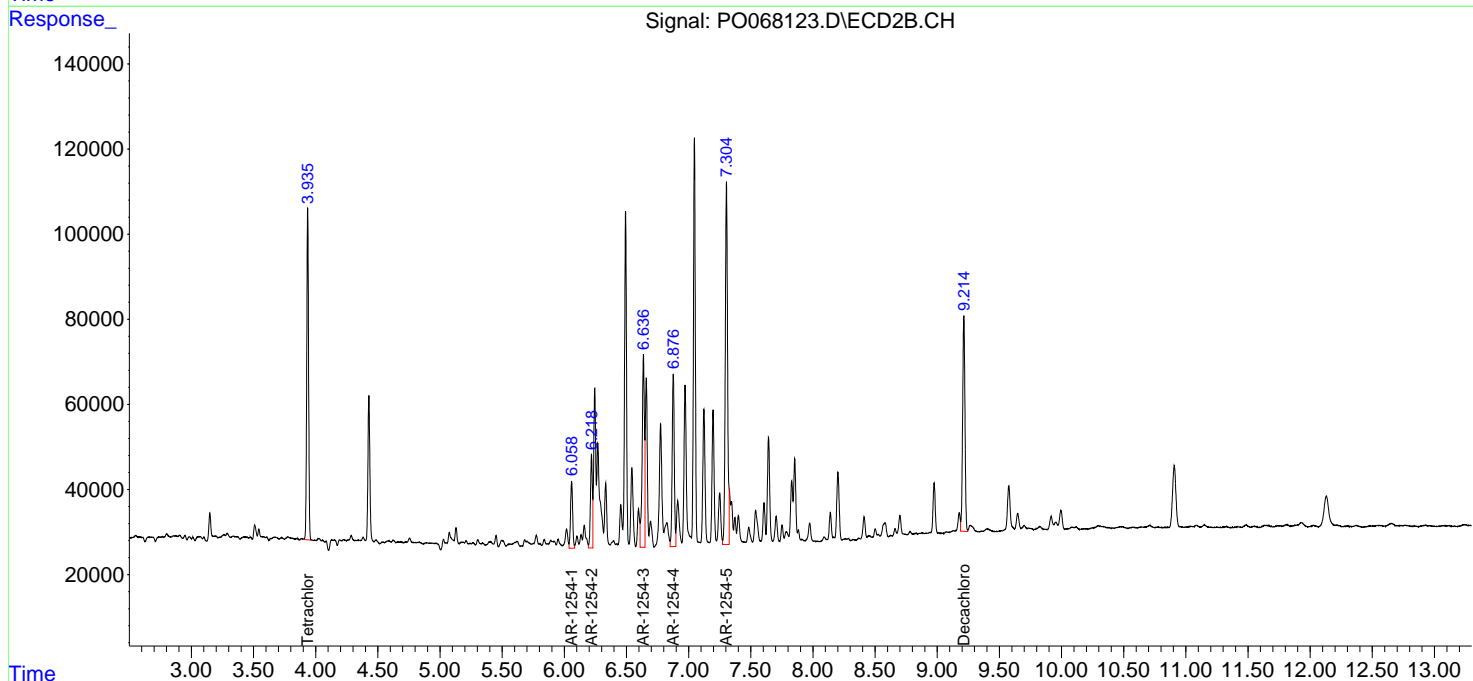
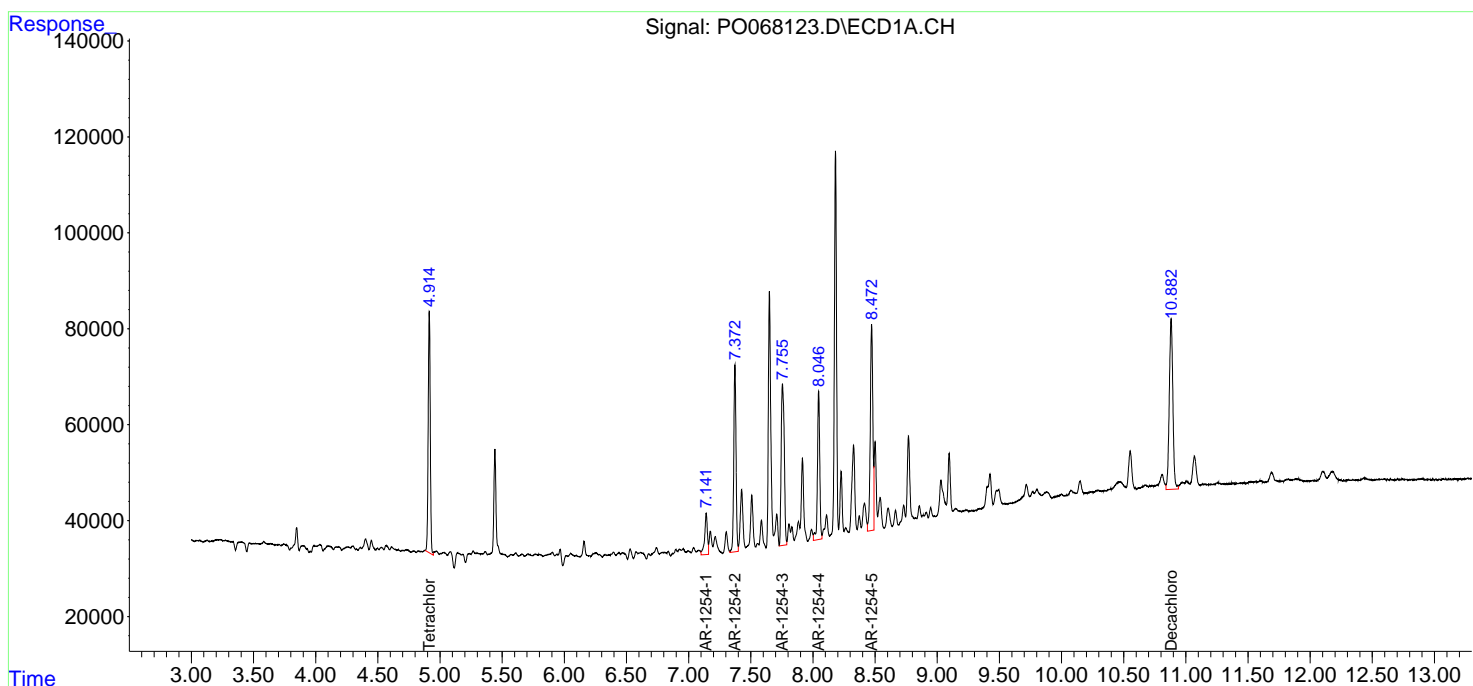
Data Path : Z:\pestpcbsrv\HPCHEM1\ECD_O\Data\P0050120\
 Data File : P0068123.D
 Signal(s) : Signal #1: ECD1A.CH Signal #2: ECD2B.CH
 Acq On : 01 May 2020 15:04
 Operator : DD\AJ
 Sample : L2463-01
 Misc :
 ALS Vial : 21 Sample Multiplier: 1

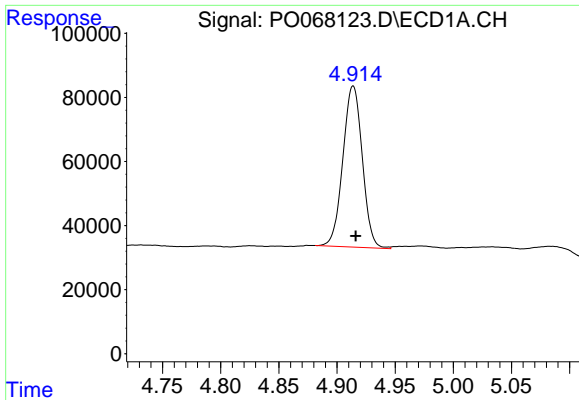
Instrument :
 ECD_O
 ClientSampled :
 AOC14-CARWASH

Manual Integrations
APPROVED
 Sohil
 5/4/2020 8:12:13 AM

Integration File signal 1: autoint1.e
 Integration File signal 2: autoint2.e
 Quant Time: May 02 04:44:11 2020
 Quant Method : Z:\pestpcbsrv\HPCHEM1\ECD_O\methods\P0042720.M
 Quant Title : GC EXTRACTABLES
 QLast Update : Tue Apr 28 07:12:58 2020
 Response via : Initial Calibration
 Integrator: ChemStation 6890 Scale Mode: Small noise peaks clipped

Volume Inj. : 2 µl
 Signal #1 Phase : ZB-MR1 Signal #2 Phase: ZB-MR2
 Signal #1 Info : 30Mx0.32mmx 0.50µ Signal #2 Info : 30M x 0.32mm x 0.25µm

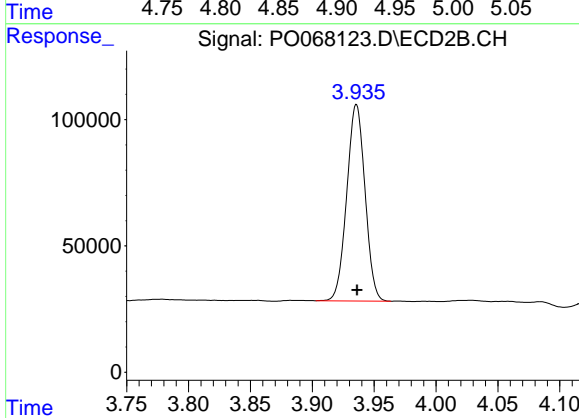




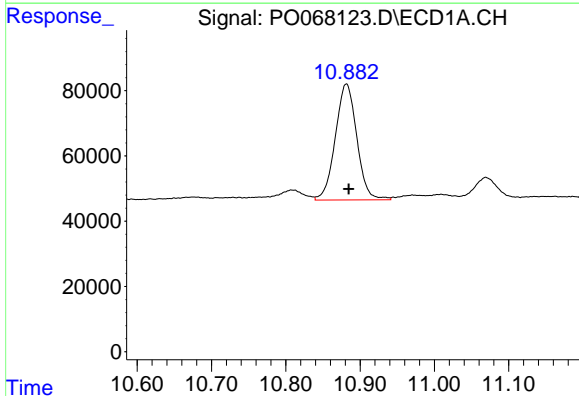
#1 Tetrachloro-m-xylene
 R.T.: 4.914 min
 Delta R.T.: -0.002 min
 Response: 584549
 Conc: 24.43 ng/ml

Instrument :
 ECD_O
ClientSampled :
 AOC14-CARWASH

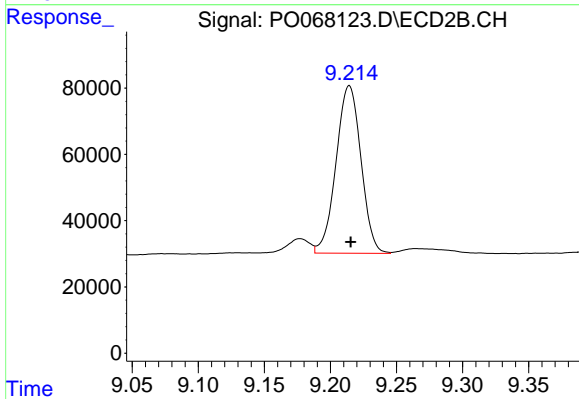
Manual Integrations
APPROVED
 Sohil
 5/4/2020 8:12:13 AM



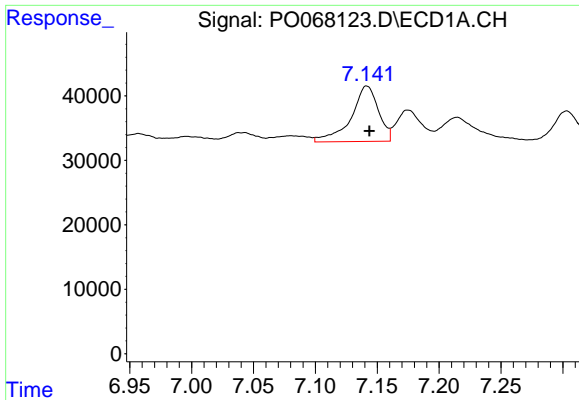
#1 Tetrachloro-m-xylene
 R.T.: 3.935 min
 Delta R.T.: -0.001 min
 Response: 799984
 Conc: 25.03 ng/ml m



#2 Decachlorobiphenyl
 R.T.: 10.882 min
 Delta R.T.: -0.003 min
 Response: 714250
 Conc: 18.93 ng/ml



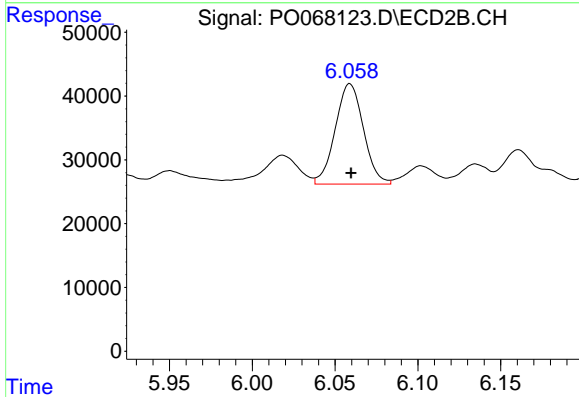
#2 Decachlorobiphenyl
 R.T.: 9.214 min
 Delta R.T.: -0.001 min
 Response: 662776
 Conc: 17.17 ng/ml m



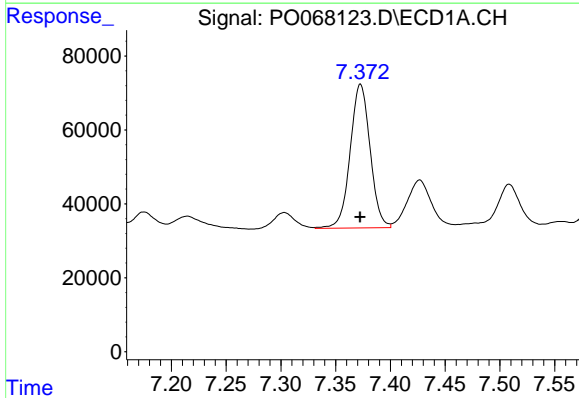
#26 AR-1254-1
 R.T.: 7.142 min
 Delta R.T.: -0.002 min
 Response: 132533
 Conc: 119.82 ng/ml

Instrument :
 ECD_O
ClientSampled :
 AOC14-CARWASH

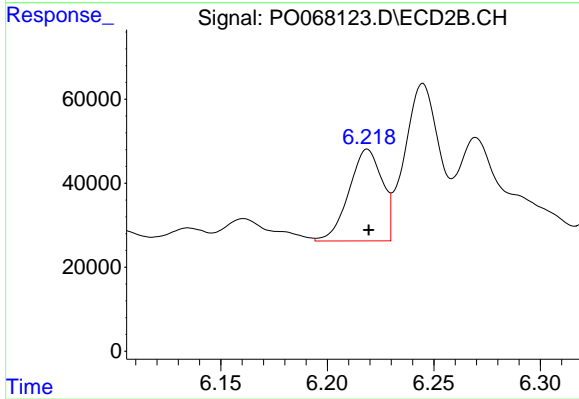
Manual Integrations
APPROVED
 Sohil
 5/4/2020 8:12:13 AM



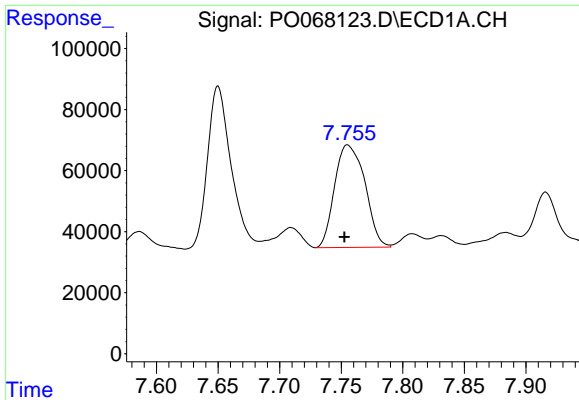
#26 AR-1254-1
 R.T.: 6.059 min
 Delta R.T.: 0.000 min
 Response: 186534
 Conc: 90.92 ng/ml



#27 AR-1254-2
 R.T.: 7.373 min
 Delta R.T.: 0.000 min
 Response: 493036
 Conc: 284.60 ng/ml



#27 AR-1254-2
 R.T.: 6.219 min
 Delta R.T.: 0.000 min
 Response: 236562
 Conc: 128.96 ng/ml

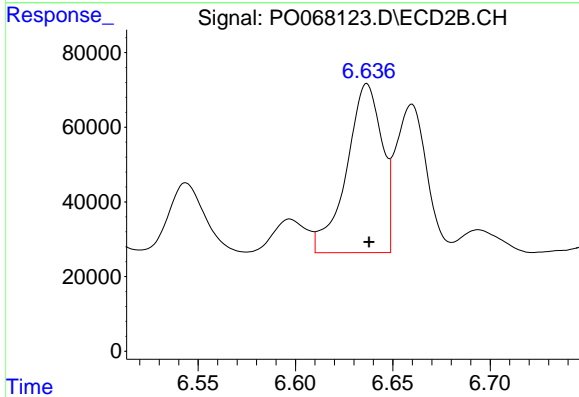


#28 AR-1254-3

R.T.: 7.756 min
 Delta R.T.: 0.003 min
 Response: 575320
 Conc: 312.14 ng/ml

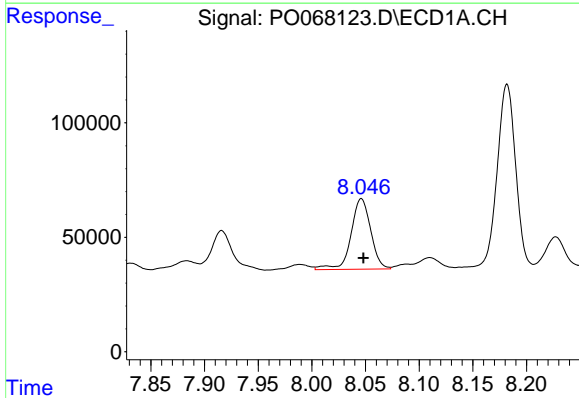
Instrument :
 ECD_O
ClientSampled :
 AOC14-CARWASH

Manual Integrations
APPROVED
 Sohil
 5/4/2020 8:12:13 AM



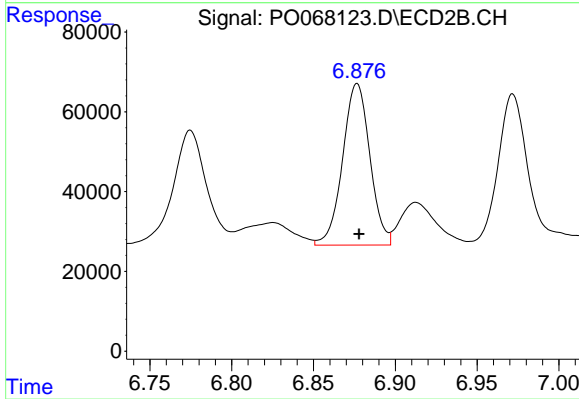
#28 AR-1254-3

R.T.: 6.637 min
 Delta R.T.: -0.001 min
 Response: 572575
 Conc: 192.16 ng/ml



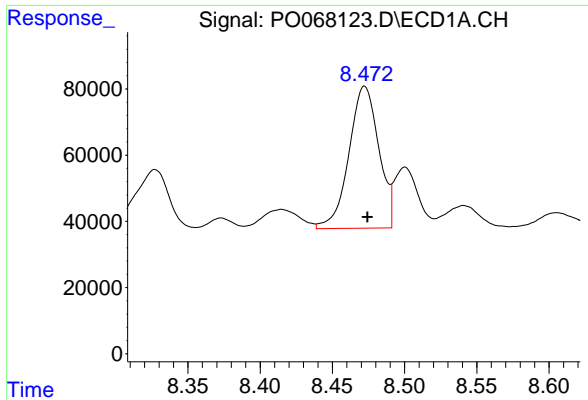
#29 AR-1254-4

R.T.: 8.046 min
 Delta R.T.: -0.002 min
 Response: 394412
 Conc: 273.35 ng/ml



#29 AR-1254-4

R.T.: 6.877 min
 Delta R.T.: -0.001 min
 Response: 469984
 Conc: 234.90 ng/ml



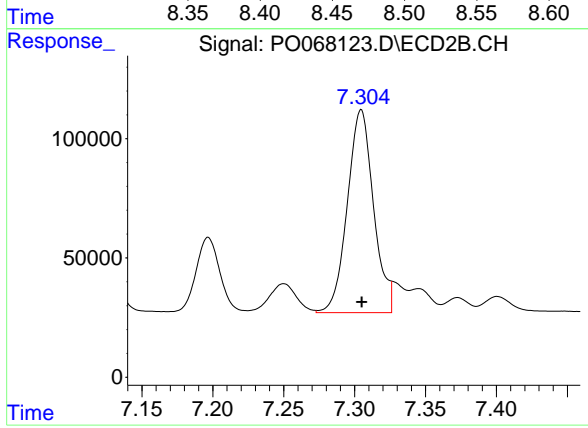
#30 AR-1254-5

R.T.: 8.472 min
Delta R.T.: -0.002 min
Response: 618102
Conc: 412.80 ng/ml

Instrument :
ECD_O
ClientSampleId :
AOC14-CARWASH

Manual Integrations
APPROVED

Sohil
5/4/2020 8:12:13 AM



#30 AR-1254-5

R.T.: 7.304 min
Delta R.T.: 0.000 min
Response: 1095566
Conc: 391.45 ng/ml m