

Data Path : P:\HPCHEM1\ECD_O\Data\PO050318\
 Data File : PO044332.D
 Signal(s) : Signal #1: ECD1A.CH Signal #2: ECD2B.CH
 Acq On : 03 May 2018 18:13
 Operator : SM/UA
 Sample : J2626-03
 Misc :
 ALS Vial : 11 Sample Multiplier: 1

Instrument :
 ECD_O
 ClientSampleId :
 EPE-MX-4(80-82)

Integration File signal 1: autoint1.e
 Integration File signal 2: autoint2.e
 Quant Time: May 04 01:18:24 2018
 Quant Method : P:\HPCHEM1\ECD_O\methods\PO042518.M
 Quant Title : GC EXTRACTABLES
 QLast Update : Thu Apr 26 04:36:05 2018
 Response via : Initial Calibration
 Integrator: ChemStation 6890 Scale Mode: Small noise peaks clipped

Volume Inj. : 2 µl
 Signal #1 Phase : ZB-MR1 Signal #2 Phase: ZB-MR2
 Signal #1 Info : 30Mx0.32mmx 0.50µ Signal #2 Info : 30M x 0.32mm x 0.25µm

Compound	RT#1	RT#2	Resp#1	Resp#2	ng/ml	ng/ml

System Monitoring Compounds						
1) SA Tetrachlo...	4.036	3.294	8562743	10240002	11.962	10.585
2) SA Decachlor...	9.373	8.052	5437496	7301688	8.828	8.798
Target Compounds						
3) L1 AR-1016-1	4.869	0.000	183946	0	12.727	N.D. #
9) L2 AR-1221-2	0.000	3.580	0	185048	N.D.	19.372 #
12) L3 AR-1232-2	5.104	0.000	478203	0	63.159	N.D. #
28) L6 AR-1254-3	6.565	0.000	252886	0	6.704	N.D. #
32) L7 AR-1260-2	0.000	5.925	0	436627	N.D.	8.118 #
36) L8 AR-1262-1	0.000	5.925	0	436627	N.D.	10.293 #

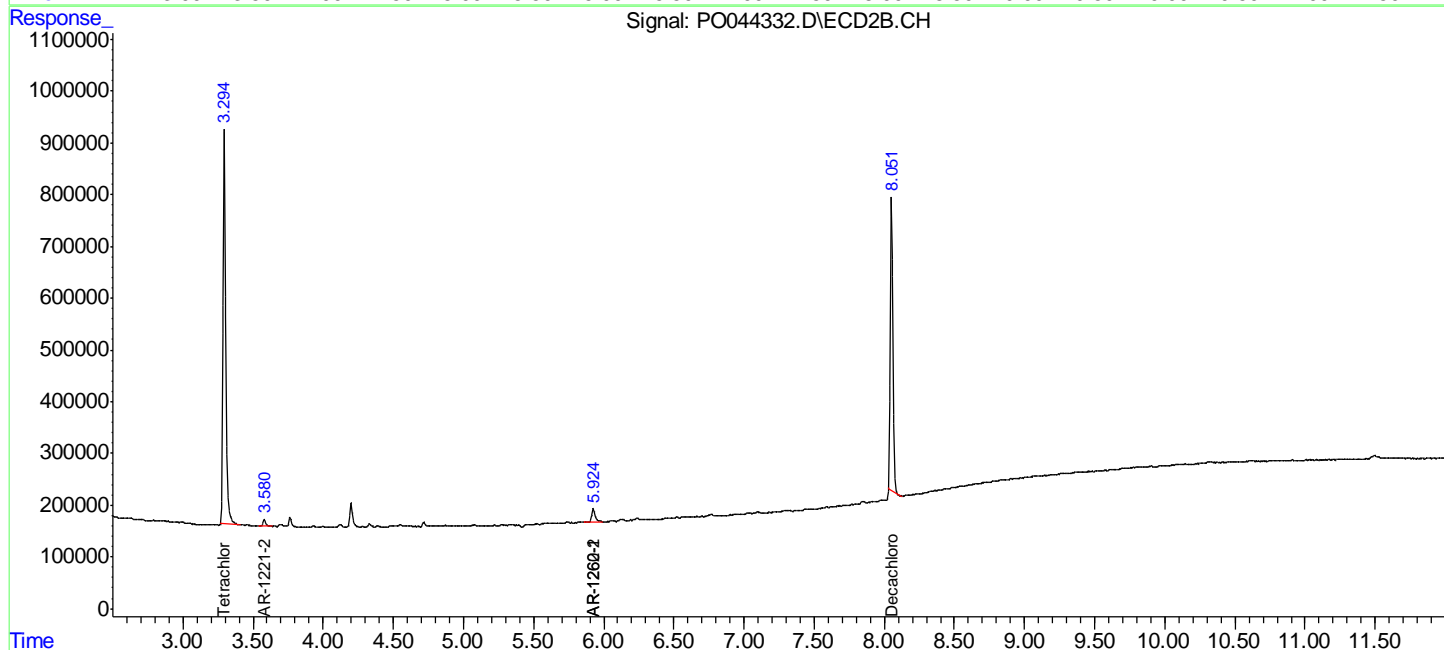
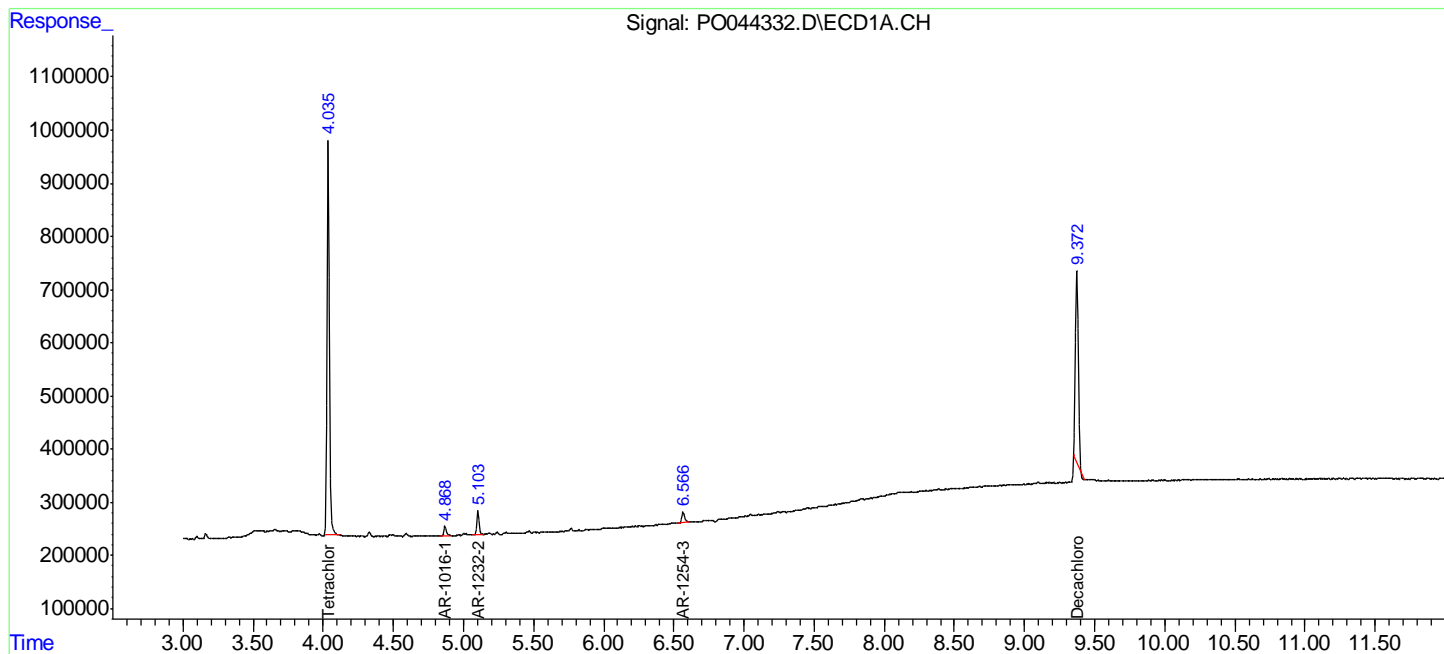
(f)=RT Delta > 1/2 Window (#)=Amounts differ by > 25% (m)=manual int.

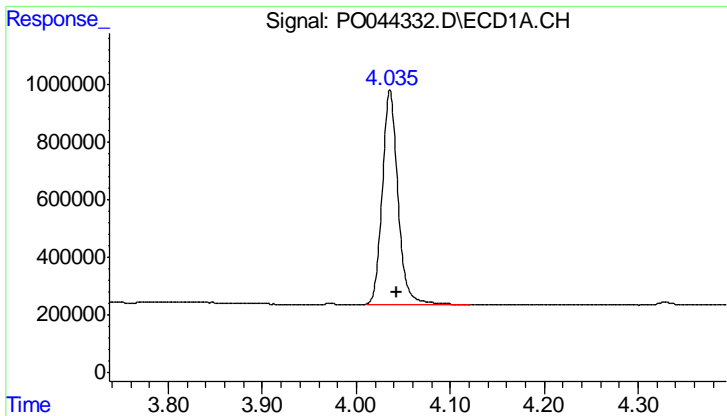
Data Path : P:\HPCHEM1\ECD_O\Data\PO050318\
 Data File : PO044332.D
 Signal(s) : Signal #1: ECD1A.CH Signal #2: ECD2B.CH
 Acq On : 03 May 2018 18:13
 Operator : SM/UA
 Sample : J2626-03
 Misc :
 ALS Vial : 11 Sample Multiplier: 1

Instrument :
 ECD_O
 ClientSampled :
 EPE-MX-4(80-82)

Integration File signal 1: autoint1.e
 Integration File signal 2: autoint2.e
 Quant Time: May 04 01:18:24 2018
 Quant Method : P:\HPCHEM1\ECD_O\methods\PO042518.M
 Quant Title : GC EXTRACTABLES
 QLast Update : Thu Apr 26 04:36:05 2018
 Response via : Initial Calibration
 Integrator: ChemStation 6890 Scale Mode: Small noise peaks clipped

Volume Inj. : 2 µl
 Signal #1 Phase : ZB-MR1 Signal #2 Phase: ZB-MR2
 Signal #1 Info : 30Mx0.32mmx 0.50µ Signal #2 Info : 30M x 0.32mm x 0.25µm

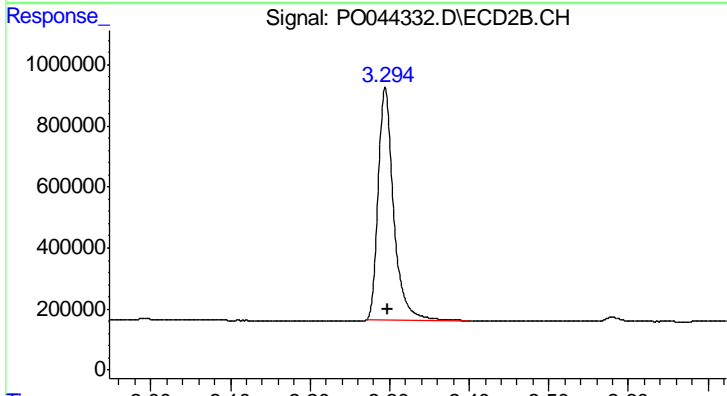




#1 Tetrachloro-m-xylene

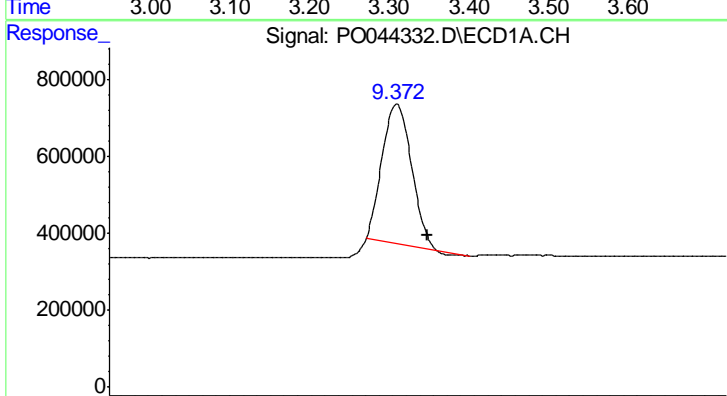
R.T.: 4.036 min
 Delta R.T.: -0.008 min
 Response: 8562743
 Conc: 11.96 ng/ml

Instrument :
 ECD_O
 ClientSampled :
 EPE-MX-4(80-82)



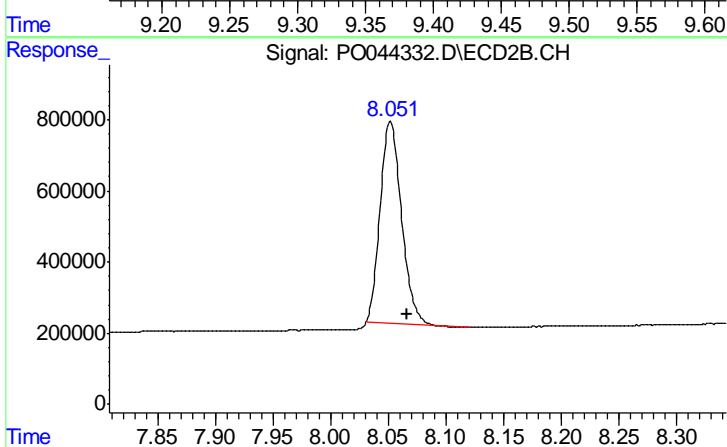
#1 Tetrachloro-m-xylene

R.T.: 3.294 min
 Delta R.T.: -0.004 min
 Response: 10240002
 Conc: 10.59 ng/ml



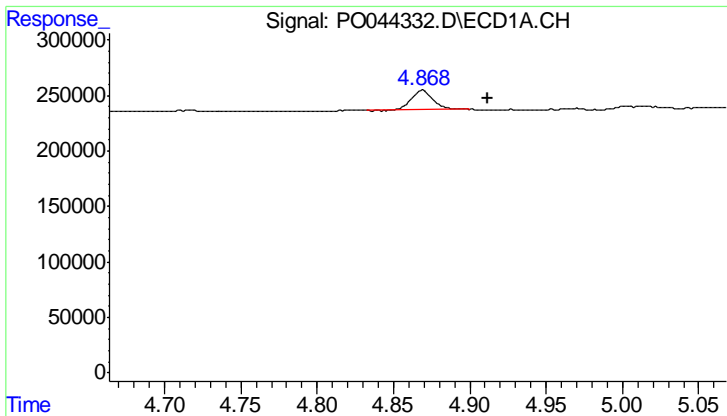
#2 Decachlorobiphenyl

R.T.: 9.373 min
 Delta R.T.: -0.023 min
 Response: 5437496
 Conc: 8.83 ng/ml



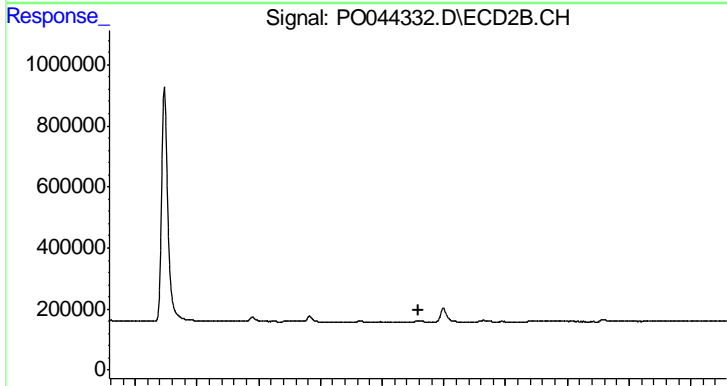
#2 Decachlorobiphenyl

R.T.: 8.052 min
 Delta R.T.: -0.015 min
 Response: 7301688
 Conc: 8.80 ng/ml

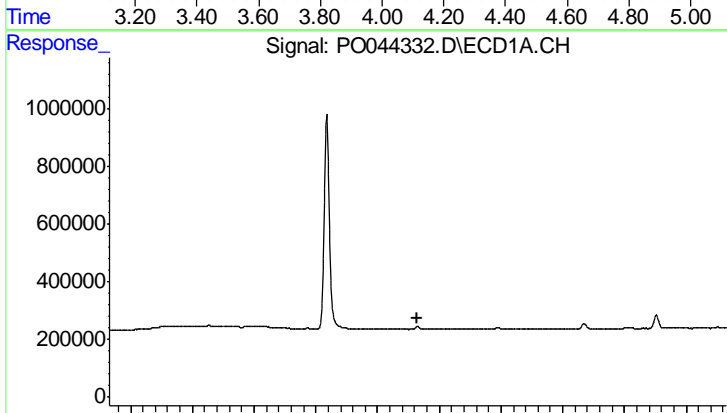


#3 AR-1016-1
 R.T.: 4.869 min
 Delta R.T.: -0.043 min
 Response: 183946
 Conc: 12.73 ng/ml

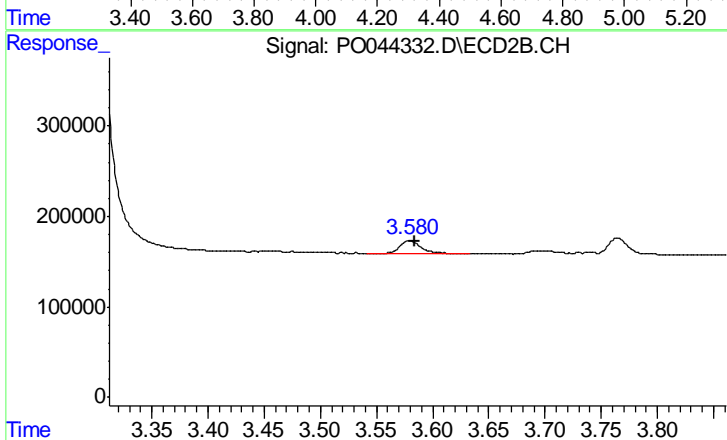
Instrument :
 ECD_O
 ClientSampleId :
 EPE-MX-4(80-82)



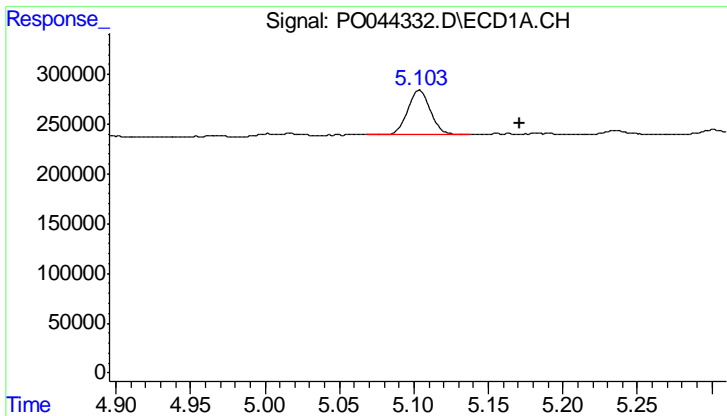
#3 AR-1016-1
 R.T.: 0.000 min
 Exp R.T. : 4.116 min
 Response: 0
 Conc: N.D.



#9 AR-1221-2
 R.T.: 0.000 min
 Exp R.T. : 4.331 min
 Response: 0
 Conc: N.D.



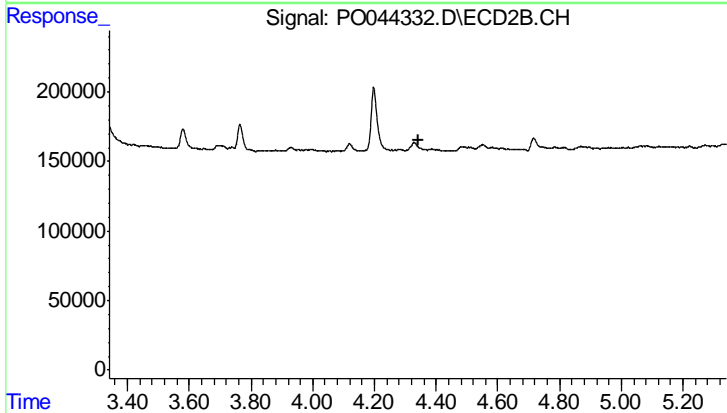
#9 AR-1221-2
 R.T.: 3.580 min
 Delta R.T.: -0.005 min
 Response: 185048
 Conc: 19.37 ng/ml



#12 AR-1232-2

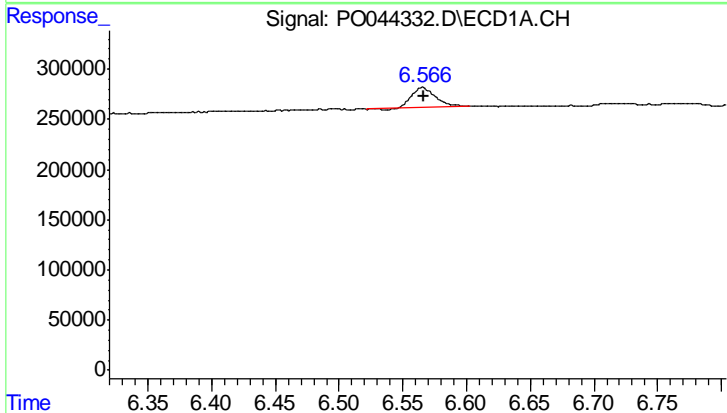
R.T.: 5.104 min
 Delta R.T.: -0.067 min
 Response: 478203
 Conc: 63.16 ng/ml

Instrument :
 ECD_O
 ClientSampleId :
 EPE-MX-4(80-82)



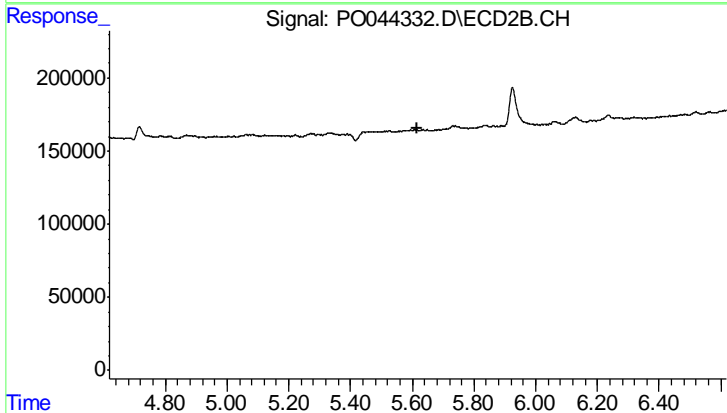
#12 AR-1232-2

R.T.: 0.000 min
 Exp R.T. : 4.341 min
 Response: 0
 Conc: N.D.



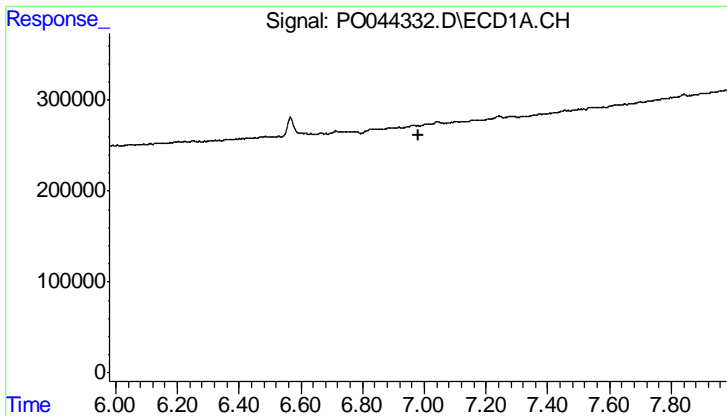
#28 AR-1254-3

R.T.: 6.565 min
 Delta R.T.: 0.000 min
 Response: 252886
 Conc: 6.70 ng/ml



#28 AR-1254-3

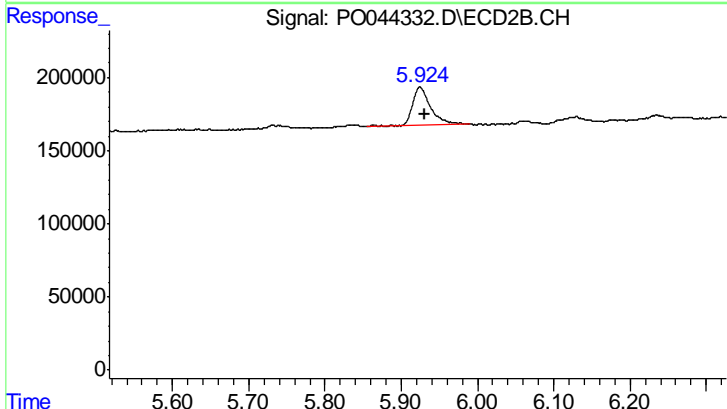
R.T.: 0.000 min
 Exp R.T. : 5.618 min
 Response: 0
 Conc: N.D.



#32 AR-1260-2

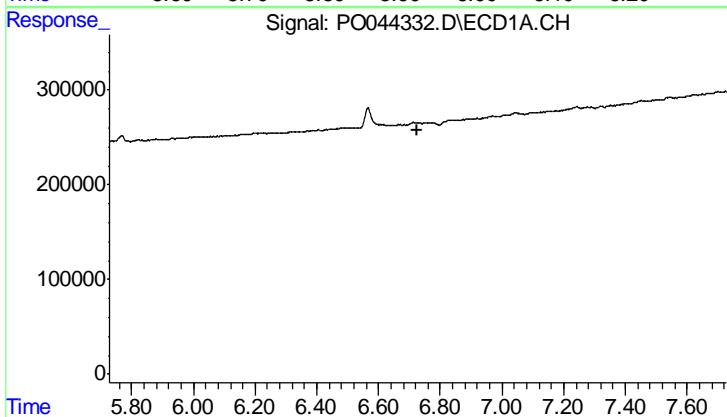
R.T.: 0.000 min
 Exp R.T.: 6.980 min
 Response: 0
 Conc: N.D.

Instrument :
 ECD_O
 ClientSampled :
 EPE-MX-4(80-82)



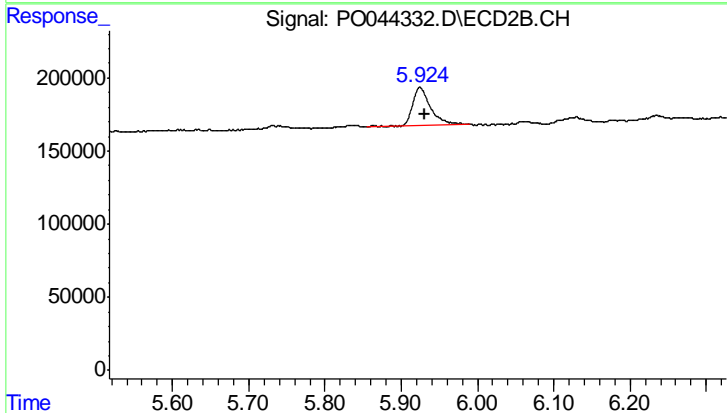
#32 AR-1260-2

R.T.: 5.925 min
 Delta R.T.: -0.006 min
 Response: 436627
 Conc: 8.12 ng/ml



#36 AR-1262-1

R.T.: 0.000 min
 Exp R.T.: 6.727 min
 Response: 0
 Conc: N.D.



#36 AR-1262-1

R.T.: 5.925 min
 Delta R.T.: -0.006 min
 Response: 436627
 Conc: 10.29 ng/ml