

Data Path : P:\HPCHEM1\ECD\_O\Data\PO050718\  
 Data File : PO044404.D  
 Signal(s) : Signal #1: ECD1A.CH Signal #2: ECD2B.CH  
 Acq On : 07 May 2018 17:18  
 Operator : SM/UA  
 Sample : AR1660CCC500  
 Misc :  
 ALS Vial : 3 Sample Multiplier: 1

Instrument :  
 ECD\_O  
 ClientSampled :  
 AR1660CCC500

Integration File signal 1: autoint1.e  
 Integration File signal 2: autoint2.e  
 Quant Time: May 08 03:24:59 2018  
 Quant Method : P:\HPCHEM1\ECD\_O\methods\PO042518.M  
 Quant Title : GC EXTRACTABLES  
 QLast Update : Thu Apr 26 04:36:05 2018  
 Response via : Initial Calibration  
 Integrator: ChemStation 6890 Scale Mode: Small noise peaks clipped

Volume Inj. : 2 µl  
 Signal #1 Phase : ZB-MR1 Signal #2 Phase: ZB-MR2  
 Signal #1 Info : 30Mx0.32mmx 0.50µ Signal #2 Info : 30M x 0.32mm x 0.25µm

Compound	RT#1	RT#2	Resp#1	Resp#2	ng/ml	ng/ml
-----						
System Monitoring Compounds						
1) SA Tetrachlo...	4.036	3.296	33443988	44398817	46.719	45.896
2) SA Decachlor...	9.367	8.048	6531170	37671251	10.603	45.394 #
Target Compounds						
3) L1 AR-1016-1	4.900	4.109	7406189	9671881	512.417	461.325
4) L1 AR-1016-2	5.239	4.542	9622802	7555322	519.525	469.741
5) L1 AR-1016-3	5.333	4.580	7880685	9181444	530.085	475.316
6) L1 AR-1016-4	5.753	4.744	7874888	10722789	537.657	524.186
7) L1 AR-1016-5	6.008	5.078	2510169	11010158	207.455	527.585 #
8) L2 AR-1221-1	4.234	3.497	974963	1149111	93.965	85.892
9) L2 AR-1221-2	4.322	3.579	1415024	1813872	188.455	189.886
10) L2 AR-1221-3	4.394	3.649	5434944	6746854	228.406	220.299
11) L3 AR-1232-1	4.394	3.649	5434944	6746854	488.986	474.242
12) L3 AR-1232-2	5.178	4.331	15720944	33545480	2076.344	1192.562 #
13) L3 AR-1232-3	5.178	4.388	15720944	12861130	1242.758	1115.556
14) L3 AR-1232-4	5.239	4.500	9622802	9809633	1220.002	1151.240
15) L3 AR-1232-5	5.333	4.580	7880685	9181444	1264.943	1250.850
16) L4 AR-1242-1	4.715	4.109	6866493	9671881	741.640	702.248
17) L4 AR-1242-2	5.178	4.331	15720944	33545480	776.064	744.309
18) L4 AR-1242-3	5.333	4.500	7880685	9809633	794.555	715.603
19) L4 AR-1242-4	5.618	4.580	7199702	9181444	798.914	717.468
20) L4 AR-1242-5	5.753	4.744	7874888	10722789	768.772	793.328
21) L5 AR-1248-1	5.618	4.744	7199702	10722789	447.709	447.868
22) L5 AR-1248-2	5.753	4.883	7874888	11816574	550.102	551.804
23) L5 AR-1248-3	6.008	5.078	2510169	11010158	134.418	319.944 #
24) L5 AR-1248-4	6.045	5.118	2106027	3664470	111.585	129.750
25) L5 AR-1248-5	6.238	5.618	466702	14676199	37.934	895.030 #
26) L6 AR-1254-1	6.195	5.078	5902090	11010158	169.824	236.985 #
27) L6 AR-1254-2	6.495	5.222	2518403	8088560	110.919	205.824 #
28) L6 AR-1254-3	6.552	5.618	3197987	14676199	84.773	229.369 #
29) L6 AR-1254-4	6.830	5.832	2287313	1205699	74.004	23.328 #
30) L6 AR-1254-5	7.117	6.131	1753802	2282352	77.279	76.375
31) L7 AR-1260-1	6.712	5.730	14419988	21522921	558.227	538.983
32) L7 AR-1260-2	6.962	5.917	19278384	28461657	556.170	529.190
33) L7 AR-1260-3	7.316	6.232	15666863	27945846	554.703	511.417
34) L7 AR-1260-4	7.836	6.759	35319741	53565851	536.040	488.278
35) L7 AR-1260-5	8.119	7.094	17420758	35713818	430.315	462.806
36) L8 AR-1262-1	6.712	5.917	14419988	28461657	691.659	670.974
37) L8 AR-1262-2	6.962	6.060	19278384	21641781	696.026	549.078
38) L8 AR-1262-3	7.269	6.266	3000961	25350280	116.646	370.792 #

Data Path : P:\HPCHEM1\ECD\_O\Data\PO050718\  
 Data File : PO044404.D  
 Signal(s) : Signal #1: ECD1A.CH Signal #2: ECD2B.CH  
 Acq On : 07 May 2018 17:18  
 Operator : SM/UA  
 Sample : AR1660CCC500  
 Misc :  
 ALS Vial : 3 Sample Multiplier: 1

Instrument :  
 ECD\_O  
 ClientSampleId :  
 AR1660CCC500

Integration File signal 1: autoint1.e  
 Integration File signal 2: autoint2.e  
 Quant Time: May 08 03:24:59 2018  
 Quant Method : P:\HPCHEM1\ECD\_O\methods\PO042518.M  
 Quant Title : GC EXTRACTABLES  
 QLast Update : Thu Apr 26 04:36:05 2018  
 Response via : Initial Calibration  
 Integrator: ChemStation 6890 Scale Mode: Small noise peaks clipped

Volume Inj. : 2 µl  
 Signal #1 Phase : ZB-MR1 Signal #2 Phase: ZB-MR2  
 Signal #1 Info : 30Mx0.32mmx 0.50µ Signal #2 Info : 30M x 0.32mm x 0.25µm

	Compound	RT#1	RT#2	Resp#1	Resp#2	ng/ml	ng/ml
39)	L8 AR-1262-4	7.536	6.516	15445642	19931958	434.617	358.354
40)	L8 AR-1262-5	7.836	6.759	35319741	53565851	444.914	414.571
41)	L9 AR-1268-1	8.119	7.028	17420758	11286220	218.832	88.304 #
42)	L9 AR-1268-2	8.170	7.094	10802904	35713818	151.318	302.699 #
43)	L9 AR-1268-3	8.381	7.282	562309	512569	8.934	4.975 #
44)	L9 AR-1268-4	8.744	7.583	9215793	12046948	335.060	292.862
45)	L9 AR-1268-5	9.089	7.843	2211562	2352400	11.101	7.831 #

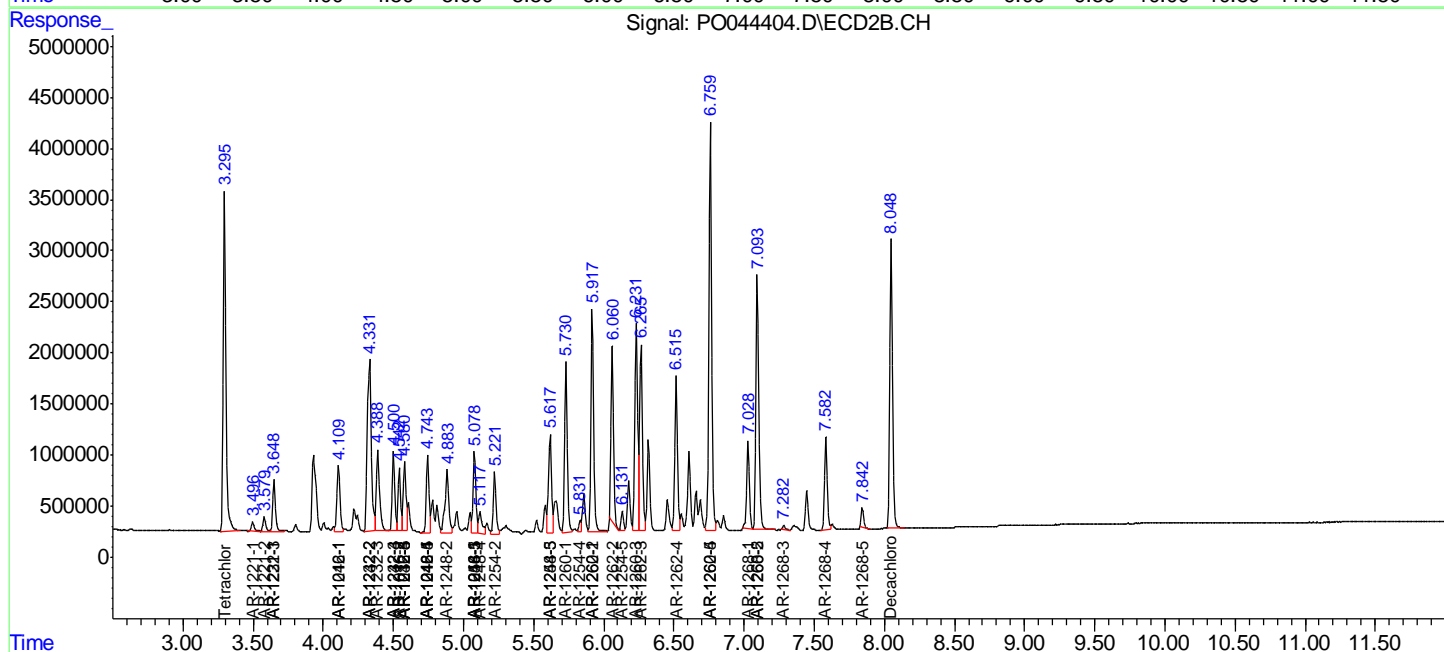
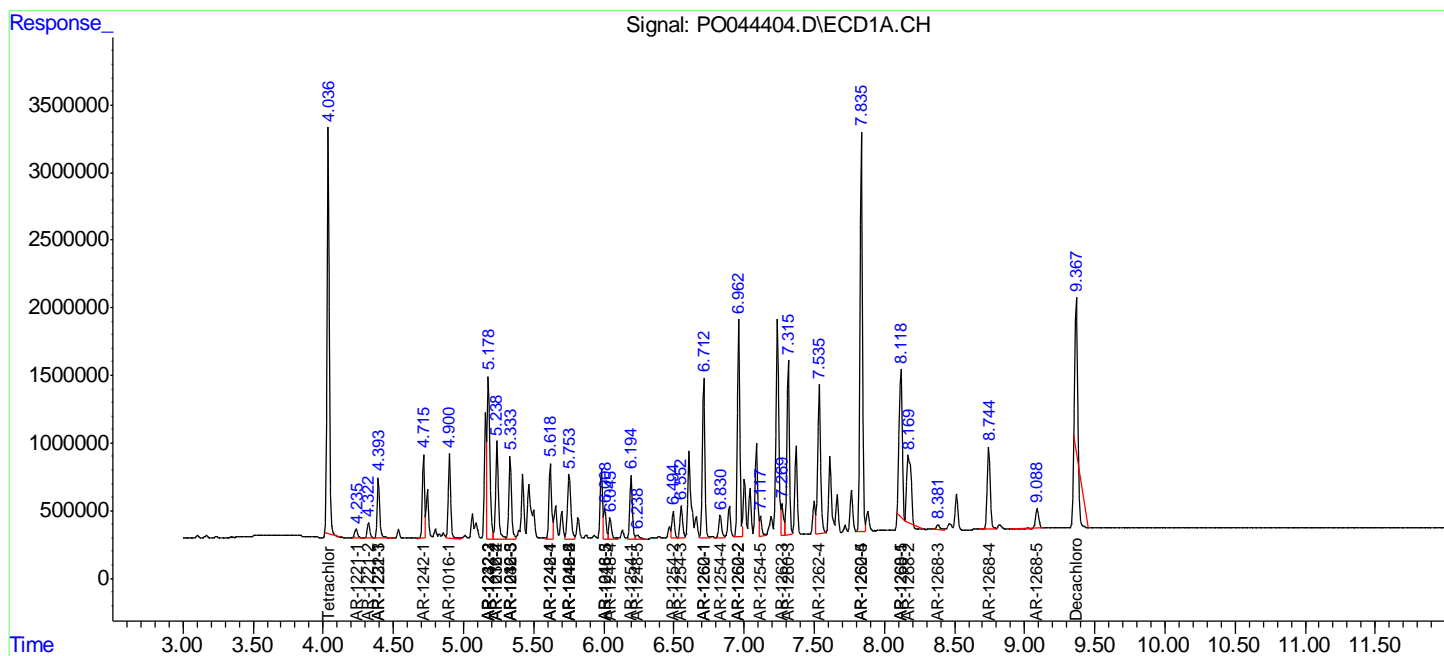
(f)=RT Delta > 1/2 Window (#)=Amounts differ by > 25% (m)=manual int.

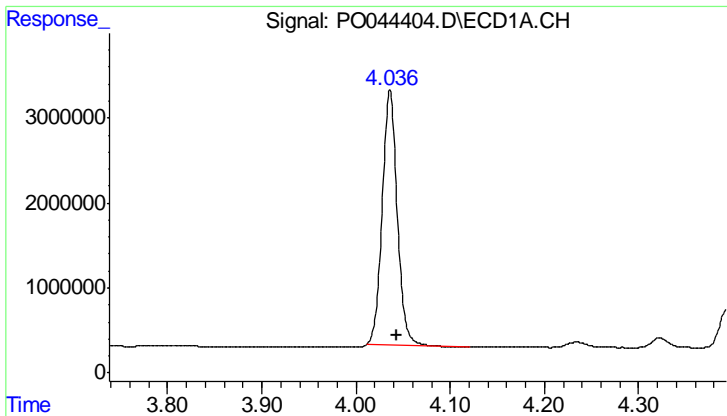
Data Path : P:\HPCHEM1\ECD\_O\Data\PO050718\  
 Data File : PO044404.D  
 Signal(s) : Signal #1: ECD1A.CH Signal #2: ECD2B.CH  
 Acq On : 07 May 2018 17:18  
 Operator : SM/UA  
 Sample : AR1660CCC500  
 Misc :  
 ALS Vial : 3 Sample Multiplier: 1

Instrument :  
 ECD\_O  
 ClientSampled :  
 AR1660CCC500

Integration File signal 1: autoint1.e  
 Integration File signal 2: autoint2.e  
 Quant Time: May 08 03:24:59 2018  
 Quant Method : P:\HPCHEM1\ECD\_O\methods\PO042518.M  
 Quant Title : GC EXTRACTABLES  
 QLast Update : Thu Apr 26 04:36:05 2018  
 Response via : Initial Calibration  
 Integrator: ChemStation 6890 Scale Mode: Small noise peaks clipped

Volume Inj. : 2 µl  
 Signal #1 Phase : ZB-MR1 Signal #2 Phase: ZB-MR2  
 Signal #1 Info : 30Mx0.32mmx 0.50µ Signal #2 Info : 30M x 0.32mm x 0.25µm

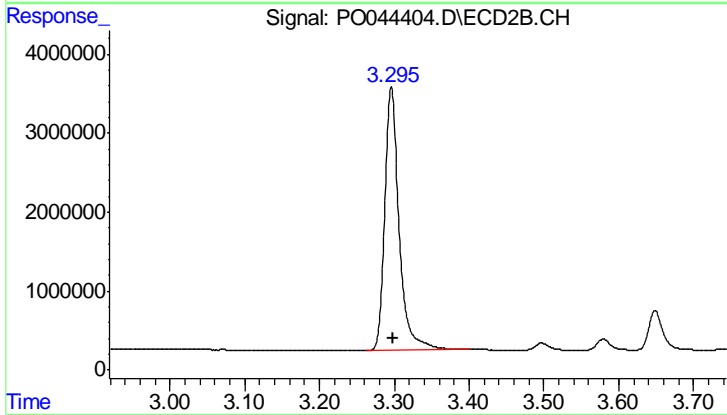




#1 Tetrachloro-m-xylene

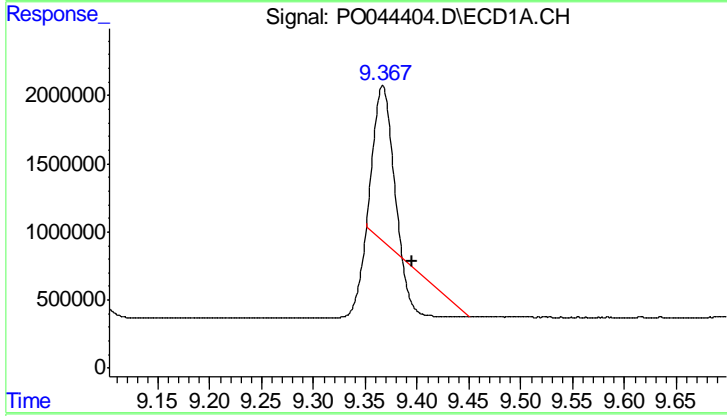
R.T.: 4.036 min  
 Delta R.T.: -0.008 min  
 Response: 33443988  
 Conc: 46.72 ng/ml

Instrument :  
 ECD\_O  
 ClientSampleId :  
 AR1660CCC500



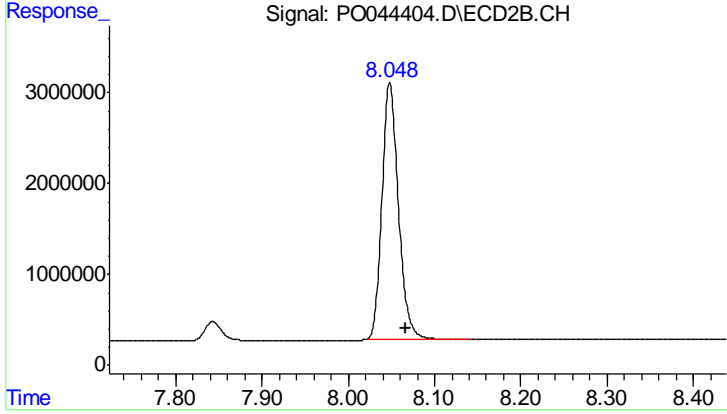
#1 Tetrachloro-m-xylene

R.T.: 3.296 min  
 Delta R.T.: -0.002 min  
 Response: 44398817  
 Conc: 45.90 ng/ml



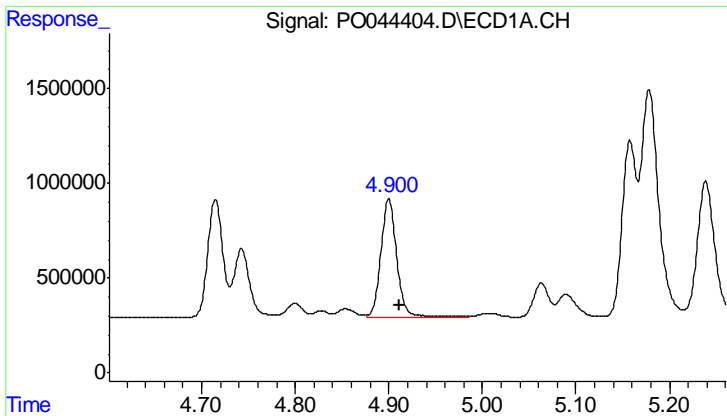
#2 Decachlorobiphenyl

R.T.: 9.367 min  
 Delta R.T.: -0.029 min  
 Response: 6531170  
 Conc: 10.60 ng/ml



#2 Decachlorobiphenyl

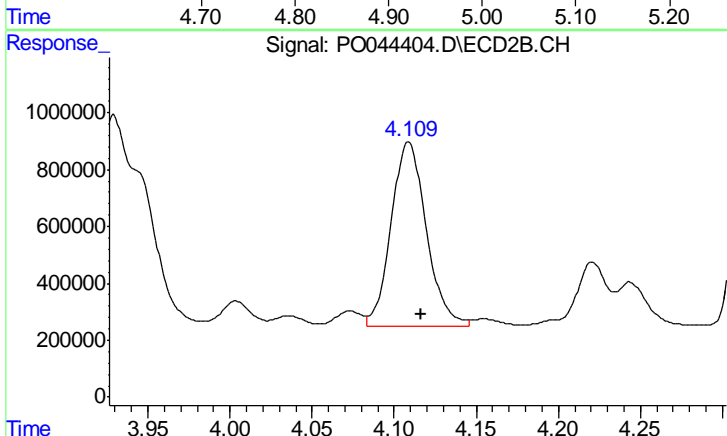
R.T.: 8.048 min  
 Delta R.T.: -0.018 min  
 Response: 37671251  
 Conc: 45.39 ng/ml



#3 AR-1016-1

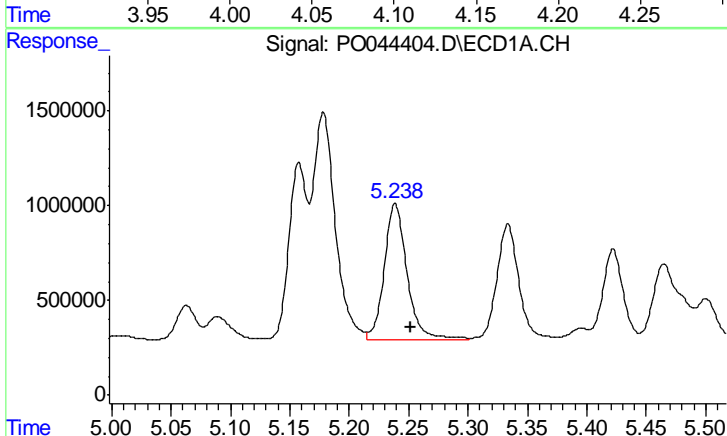
R.T.: 4.900 min  
 Delta R.T.: -0.012 min  
 Response: 7406189  
 Conc: 512.42 ng/ml

Instrument :  
 ECD\_O  
 ClientSampled :  
 AR1660CCC500



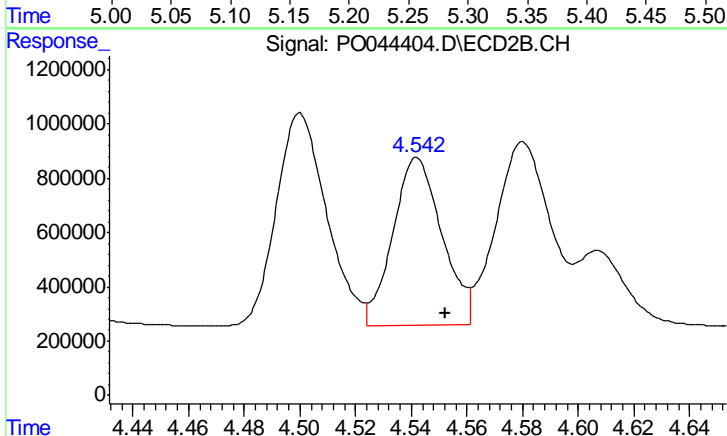
#3 AR-1016-1

R.T.: 4.109 min  
 Delta R.T.: -0.008 min  
 Response: 9671881  
 Conc: 461.33 ng/ml



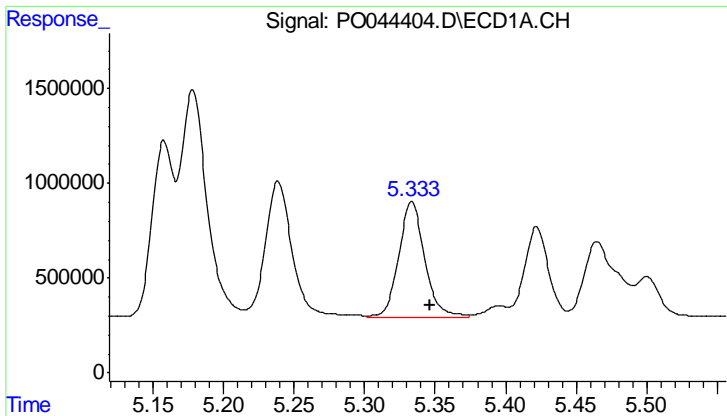
#4 AR-1016-2

R.T.: 5.239 min  
 Delta R.T.: -0.013 min  
 Response: 9622802  
 Conc: 519.53 ng/ml



#4 AR-1016-2

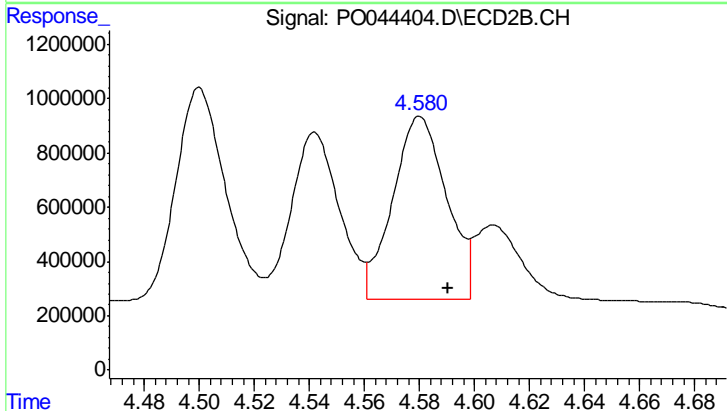
R.T.: 4.542 min  
 Delta R.T.: -0.010 min  
 Response: 7555322  
 Conc: 469.74 ng/ml



#5 AR-1016-3

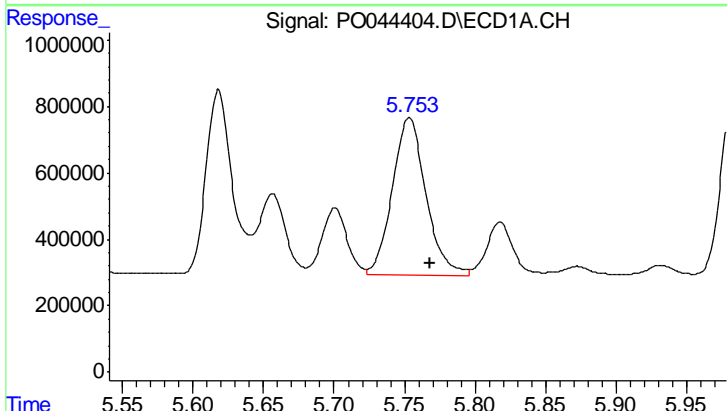
R.T.: 5.333 min  
 Delta R.T.: -0.013 min  
 Response: 7880685  
 Conc: 530.08 ng/ml

Instrument :  
 ECD\_O  
 ClientSampleId :  
 AR1660CCC500



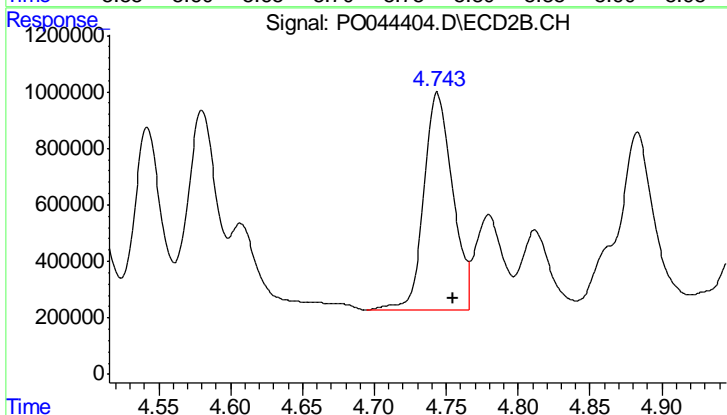
#5 AR-1016-3

R.T.: 4.580 min  
 Delta R.T.: -0.010 min  
 Response: 9181444  
 Conc: 475.32 ng/ml



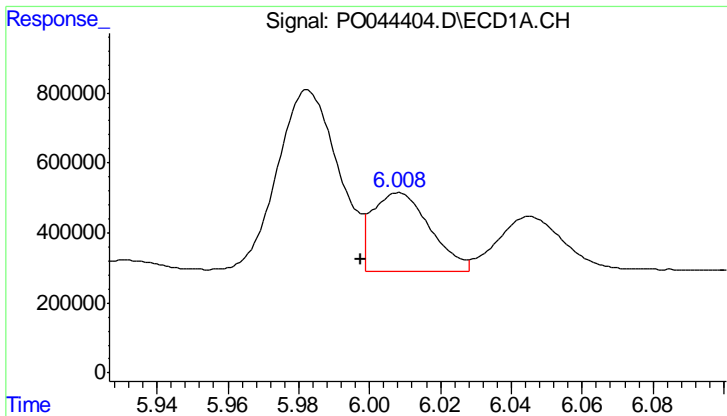
#6 AR-1016-4

R.T.: 5.753 min  
 Delta R.T.: -0.015 min  
 Response: 7874888  
 Conc: 537.66 ng/ml



#6 AR-1016-4

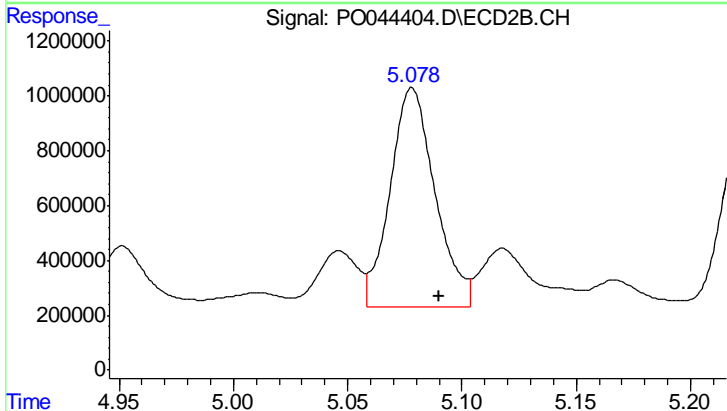
R.T.: 4.744 min  
 Delta R.T.: -0.011 min  
 Response: 10722789  
 Conc: 524.19 ng/ml



#7 AR-1016-5

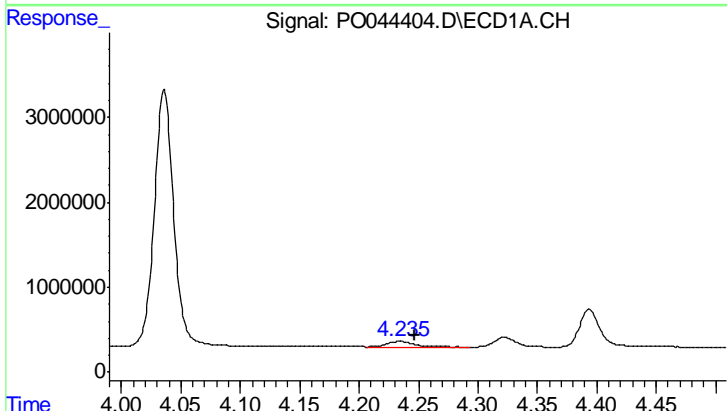
R.T.: 6.008 min  
 Delta R.T.: 0.011 min  
 Response: 2510169  
 Conc: 207.46 ng/ml

Instrument :  
 ECD\_O  
 ClientSampled :  
 AR1660CCC500



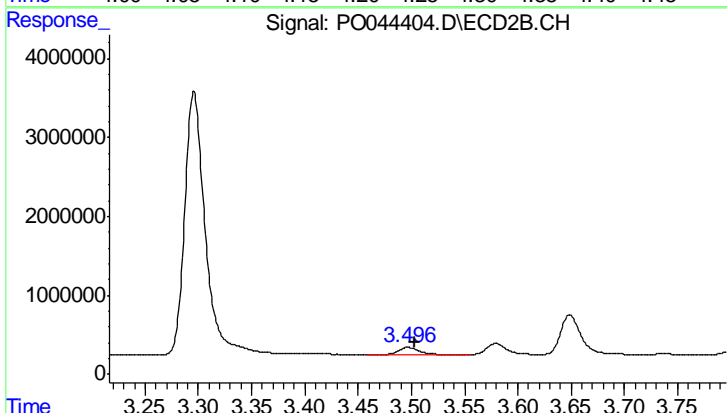
#7 AR-1016-5

R.T.: 5.078 min  
 Delta R.T.: -0.012 min  
 Response: 11010158  
 Conc: 527.59 ng/ml



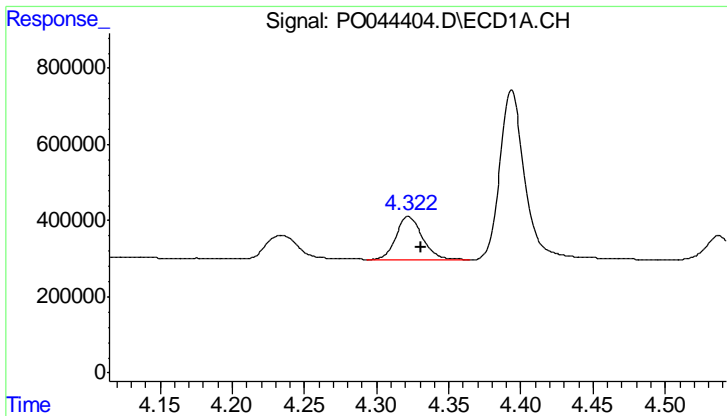
#8 AR-1221-1

R.T.: 4.234 min  
 Delta R.T.: -0.013 min  
 Response: 974963  
 Conc: 93.96 ng/ml



#8 AR-1221-1

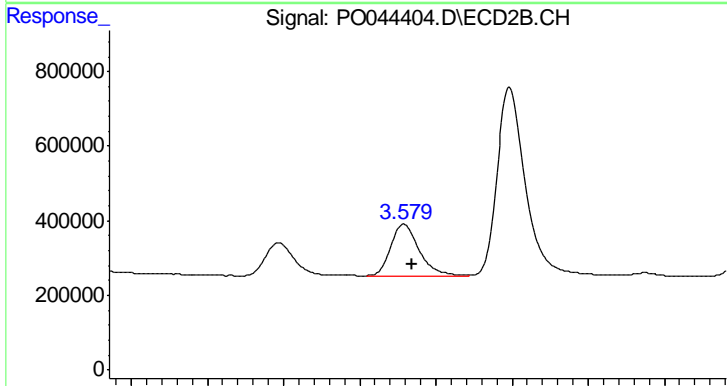
R.T.: 3.497 min  
 Delta R.T.: -0.006 min  
 Response: 1149111  
 Conc: 85.89 ng/ml



#9 AR-1221-2

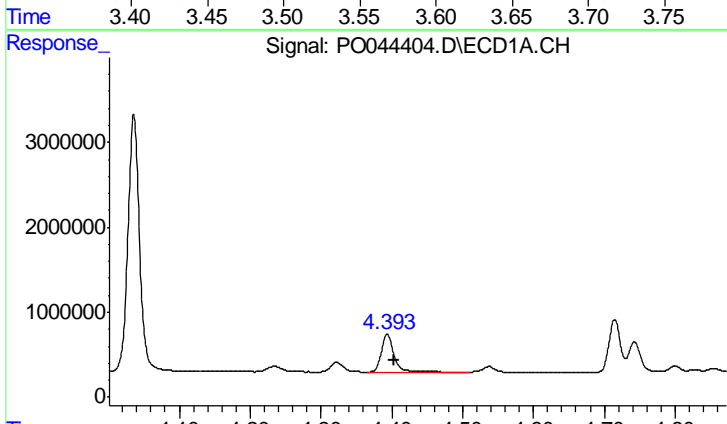
R.T.: 4.322 min  
 Delta R.T.: -0.009 min  
 Response: 1415024  
 Conc: 188.46 ng/ml

Instrument :  
 ECD\_O  
 ClientSampled :  
 AR1660CCC500



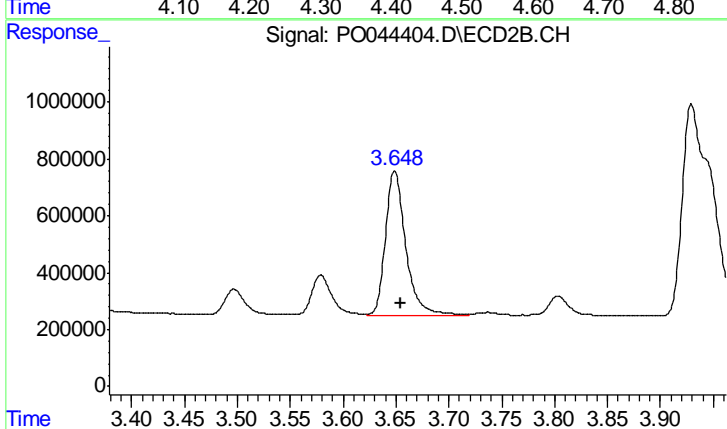
#9 AR-1221-2

R.T.: 3.579 min  
 Delta R.T.: -0.005 min  
 Response: 1813872  
 Conc: 189.89 ng/ml



#10 AR-1221-3

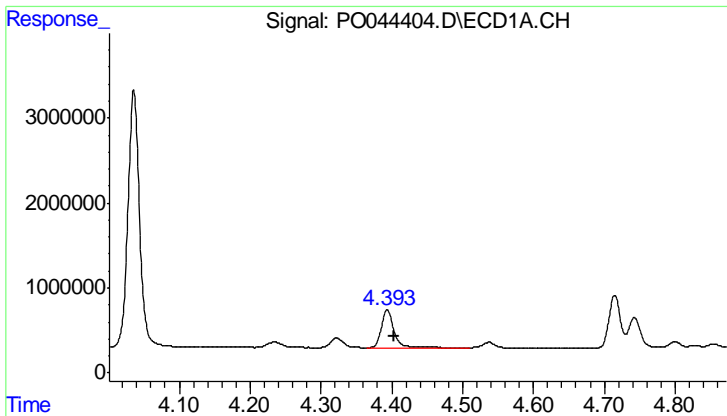
R.T.: 4.394 min  
 Delta R.T.: -0.010 min  
 Response: 5434944  
 Conc: 228.41 ng/ml



#10 AR-1221-3

R.T.: 3.649 min  
 Delta R.T.: -0.006 min  
 Response: 6746854  
 Conc: 220.30 ng/ml





#11 AR-1232-1

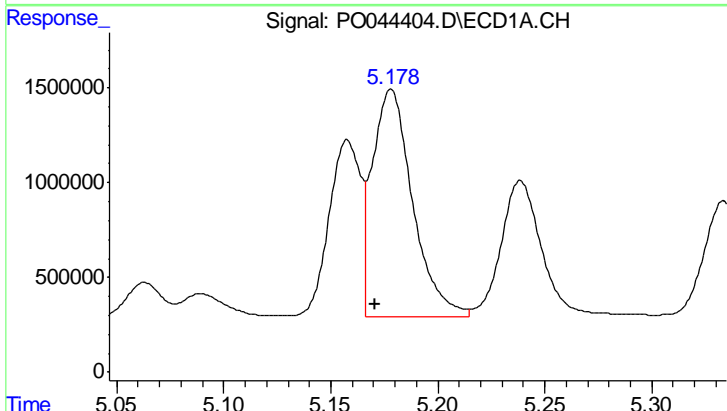
R.T.: 4.394 min  
 Delta R.T.: -0.010 min  
 Response: 5434944  
 Conc: 488.99 ng/ml

Instrument :  
 ECD\_O  
 ClientSampled :  
 AR1660CCC500



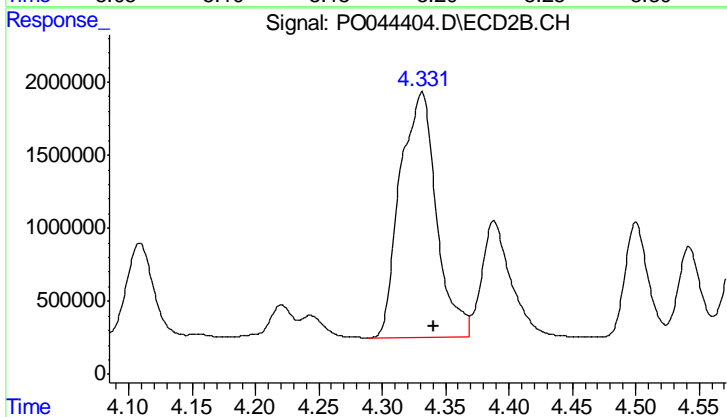
#11 AR-1232-1

R.T.: 3.649 min  
 Delta R.T.: -0.006 min  
 Response: 6746854  
 Conc: 474.24 ng/ml



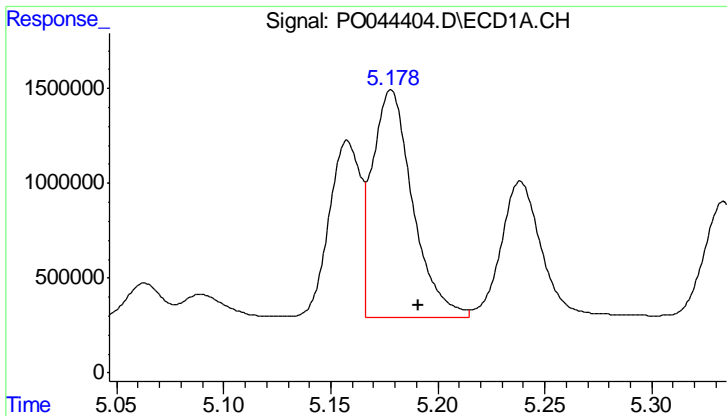
#12 AR-1232-2

R.T.: 5.178 min  
 Delta R.T.: 0.008 min  
 Response: 15720944  
 Conc: 2076.34 ng/ml



#12 AR-1232-2

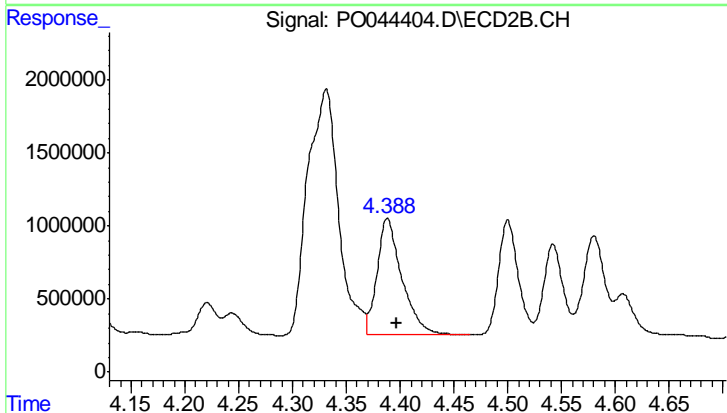
R.T.: 4.331 min  
 Delta R.T.: -0.010 min  
 Response: 33545480  
 Conc: 1192.56 ng/ml



#13 AR-1232-3

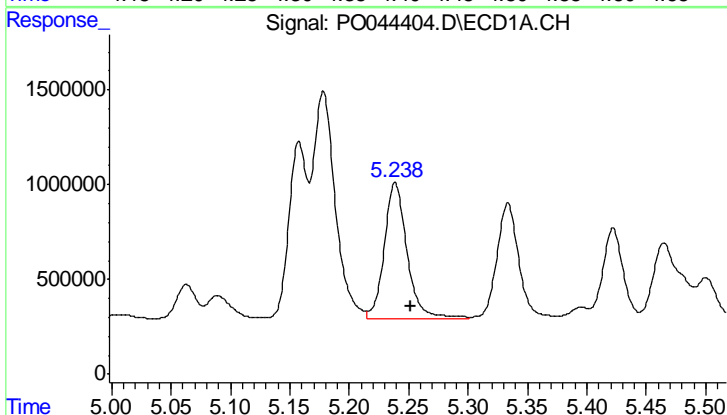
R.T.: 5.178 min  
 Delta R.T.: -0.013 min  
 Response: 15720944  
 Conc: 1242.76 ng/ml

Instrument :  
 ECD\_O  
 ClientSampled :  
 AR1660CCC500



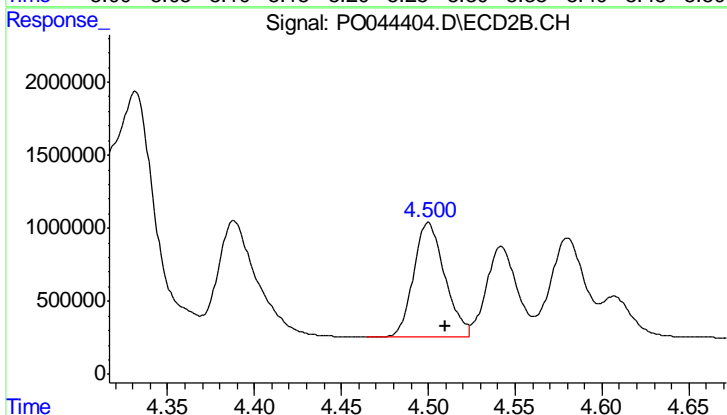
#13 AR-1232-3

R.T.: 4.388 min  
 Delta R.T.: -0.009 min  
 Response: 12861130  
 Conc: 1115.56 ng/ml



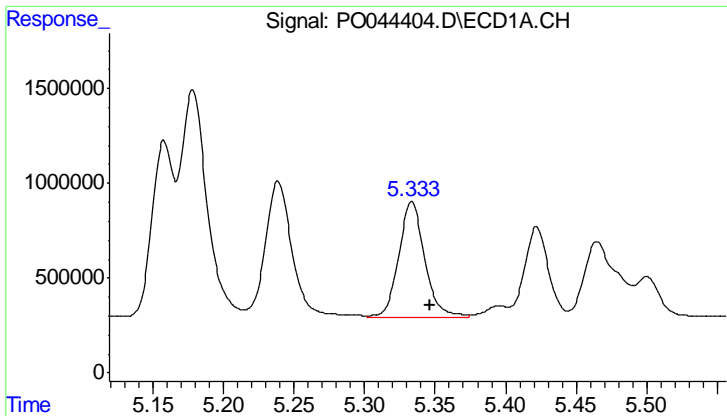
#14 AR-1232-4

R.T.: 5.239 min  
 Delta R.T.: -0.013 min  
 Response: 9622802  
 Conc: 1220.00 ng/ml



#14 AR-1232-4

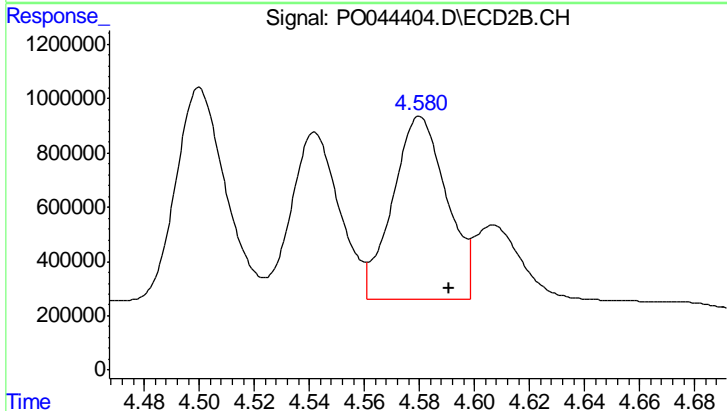
R.T.: 4.500 min  
 Delta R.T.: -0.010 min  
 Response: 9809633  
 Conc: 1151.24 ng/ml



#15 AR-1232-5

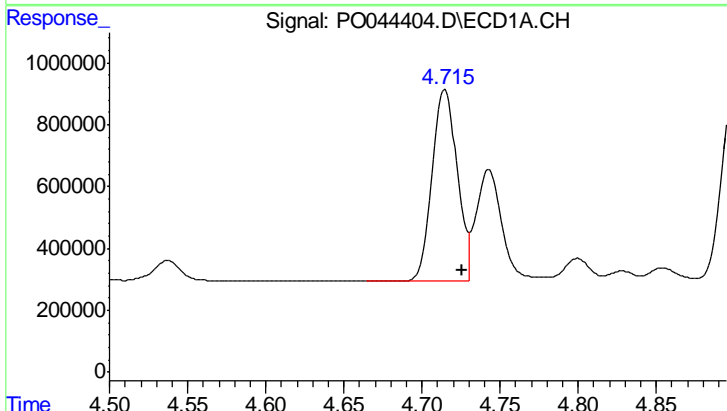
R.T.: 5.333 min  
 Delta R.T.: -0.013 min  
 Response: 7880685  
 Conc: 1264.94 ng/ml

Instrument :  
 ECD\_O  
 ClientSampled :  
 AR1660CCC500



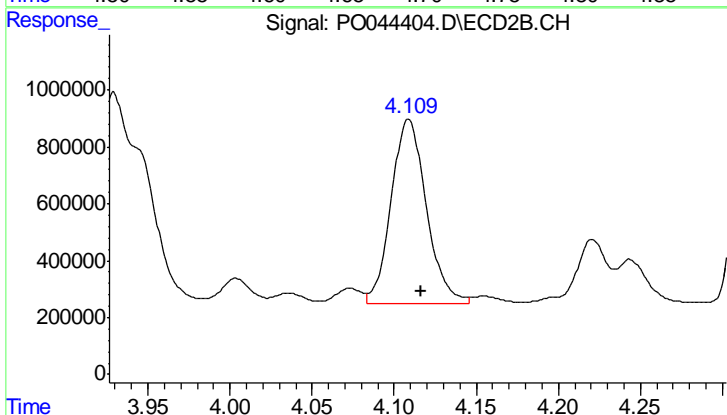
#15 AR-1232-5

R.T.: 4.580 min  
 Delta R.T.: -0.011 min  
 Response: 9181444  
 Conc: 1250.85 ng/ml



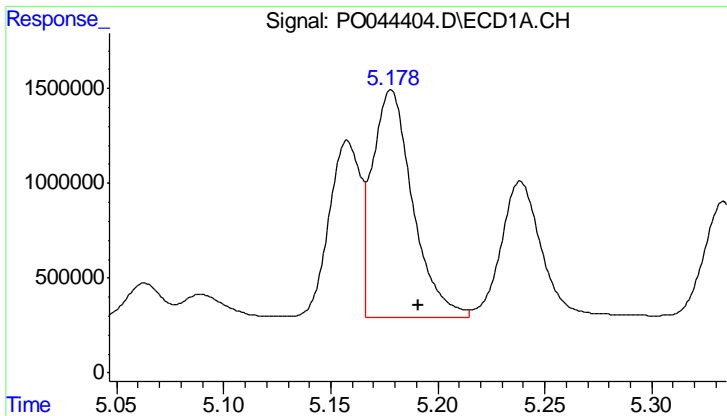
#16 AR-1242-1

R.T.: 4.715 min  
 Delta R.T.: -0.011 min  
 Response: 6866493  
 Conc: 741.64 ng/ml



#16 AR-1242-1

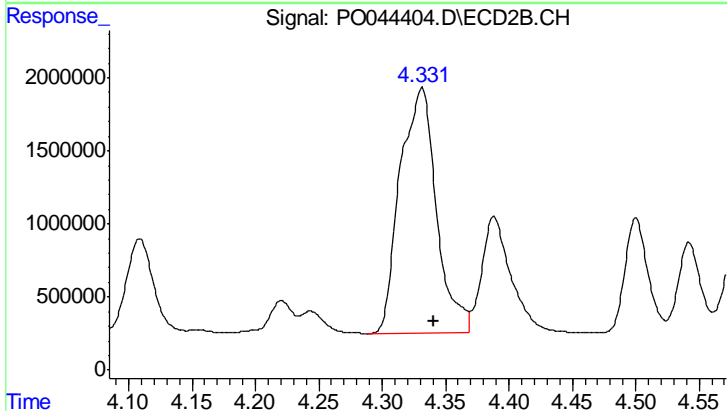
R.T.: 4.109 min  
 Delta R.T.: -0.008 min  
 Response: 9671881  
 Conc: 702.25 ng/ml



#17 AR-1242-2

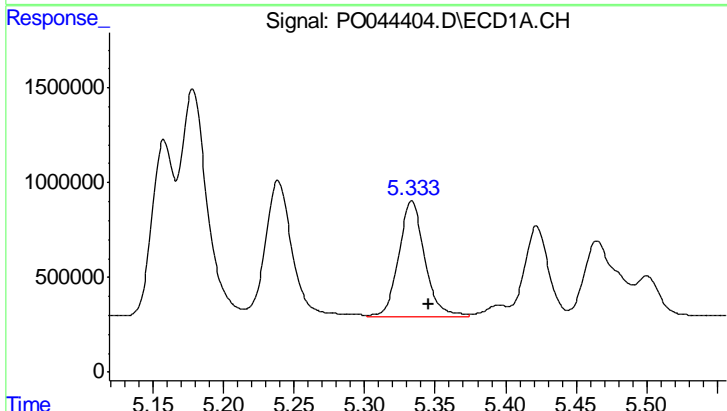
R.T.: 5.178 min  
 Delta R.T.: -0.013 min  
 Response: 15720944  
 Conc: 776.06 ng/ml

Instrument :  
 ECD\_O  
 ClientSampleId :  
 AR1660CCC500



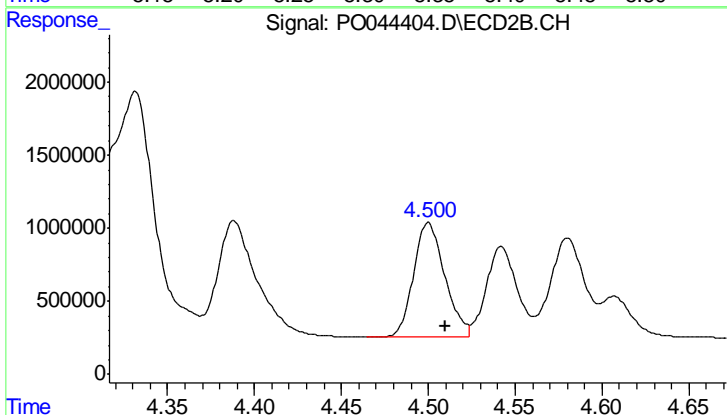
#17 AR-1242-2

R.T.: 4.331 min  
 Delta R.T.: -0.009 min  
 Response: 33545480  
 Conc: 744.31 ng/ml



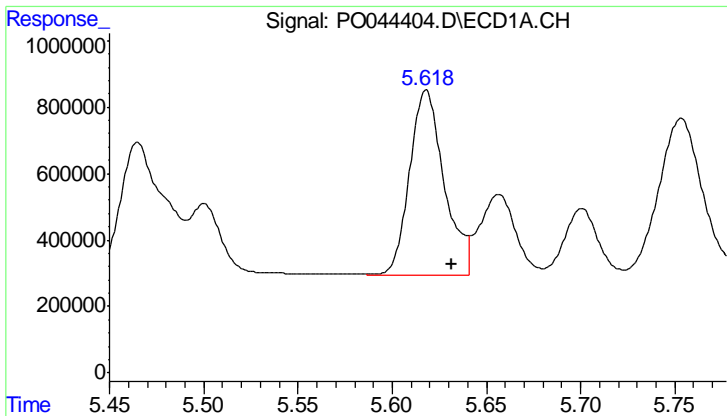
#18 AR-1242-3

R.T.: 5.333 min  
 Delta R.T.: -0.012 min  
 Response: 7880685  
 Conc: 794.55 ng/ml



#18 AR-1242-3

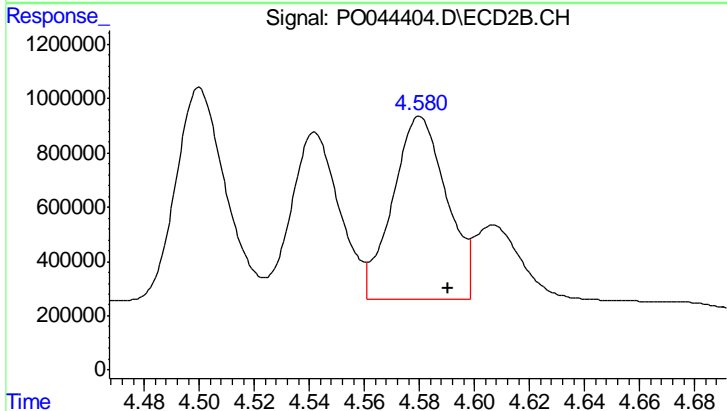
R.T.: 4.500 min  
 Delta R.T.: -0.009 min  
 Response: 9809633  
 Conc: 715.60 ng/ml



#19 AR-1242-4

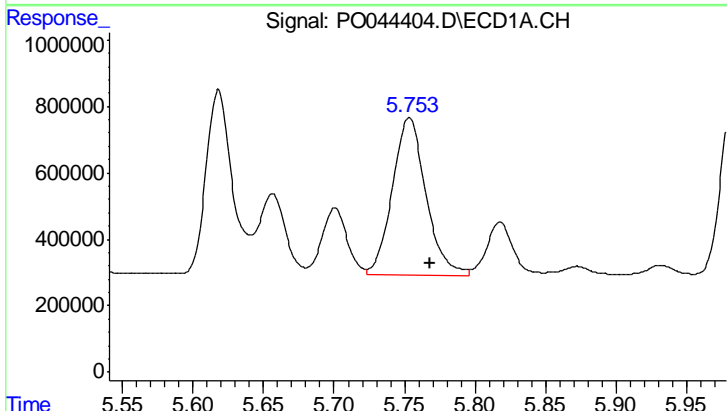
R.T.: 5.618 min  
 Delta R.T.: -0.013 min  
 Response: 7199702  
 Conc: 798.91 ng/ml

Instrument :  
 ECD\_O  
 ClientSampleId :  
 AR1660CCC500



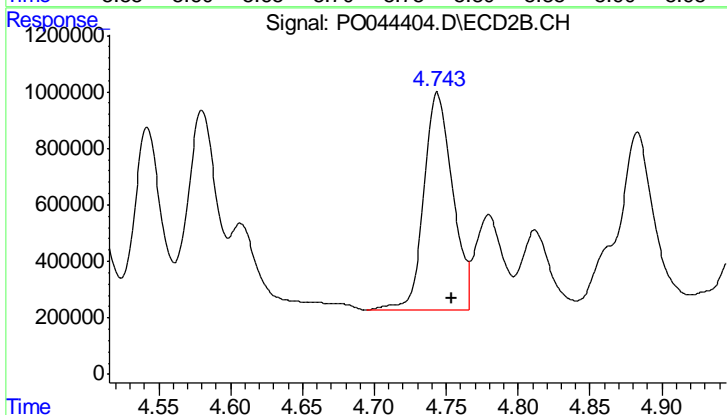
#19 AR-1242-4

R.T.: 4.580 min  
 Delta R.T.: -0.010 min  
 Response: 9181444  
 Conc: 717.47 ng/ml



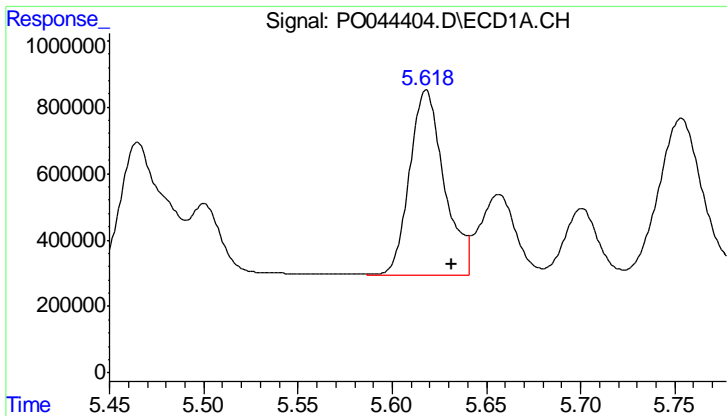
#20 AR-1242-5

R.T.: 5.753 min  
 Delta R.T.: -0.015 min  
 Response: 7874888  
 Conc: 768.77 ng/ml



#20 AR-1242-5

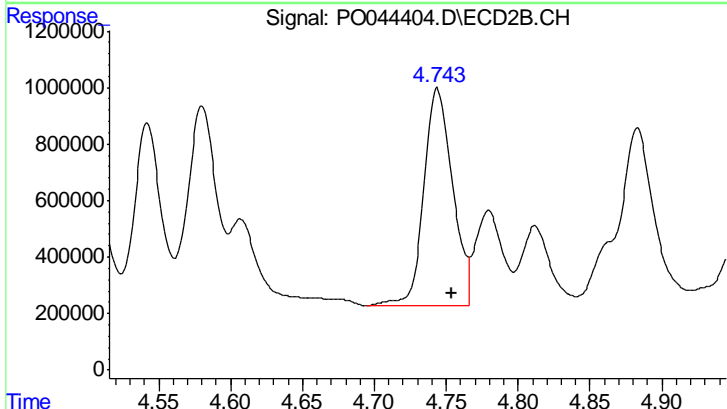
R.T.: 4.744 min  
 Delta R.T.: -0.010 min  
 Response: 10722789  
 Conc: 793.33 ng/ml



#21 AR-1248-1

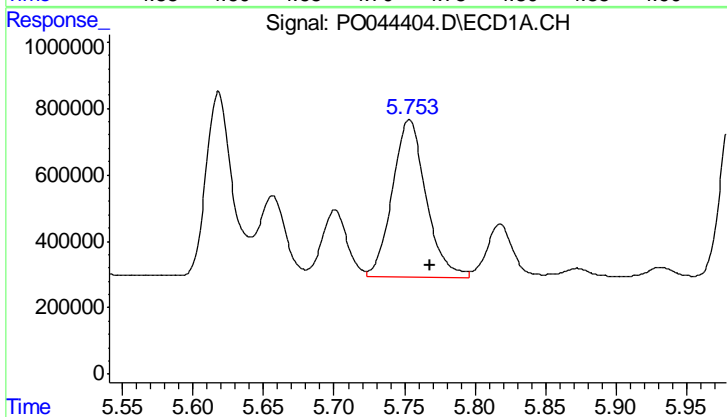
R.T.: 5.618 min  
 Delta R.T.: -0.014 min  
 Response: 7199702  
 Conc: 447.71 ng/ml

Instrument :  
 ECD\_O  
 ClientSampleId :  
 AR1660CCC500



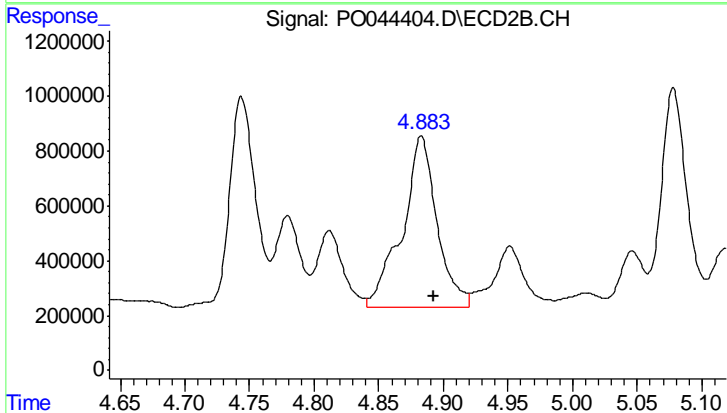
#21 AR-1248-1

R.T.: 4.744 min  
 Delta R.T.: -0.010 min  
 Response: 10722789  
 Conc: 447.87 ng/ml



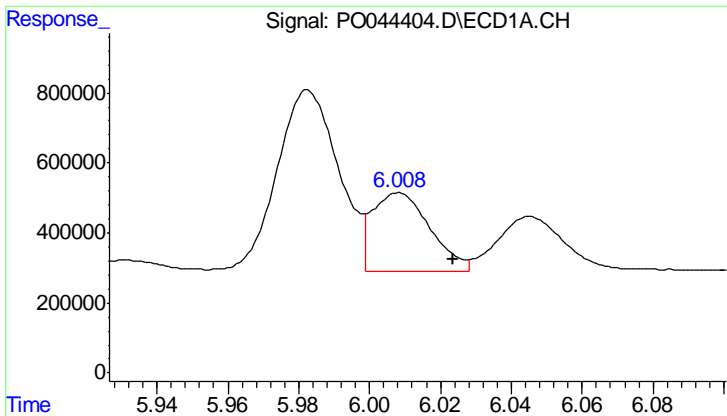
#22 AR-1248-2

R.T.: 5.753 min  
 Delta R.T.: -0.014 min  
 Response: 7874888  
 Conc: 550.10 ng/ml



#22 AR-1248-2

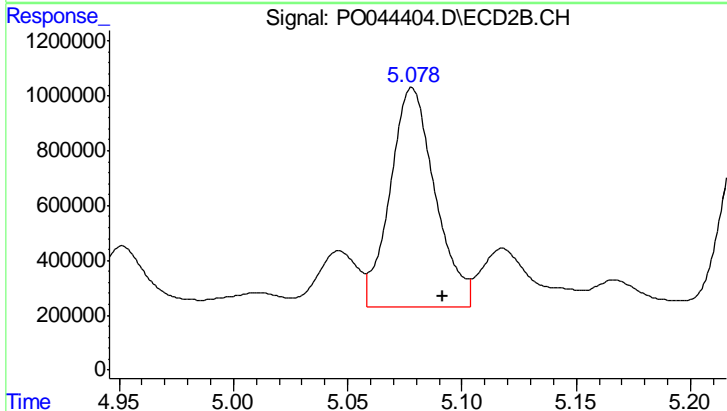
R.T.: 4.883 min  
 Delta R.T.: -0.010 min  
 Response: 11816574  
 Conc: 551.80 ng/ml



#23 AR-1248-3

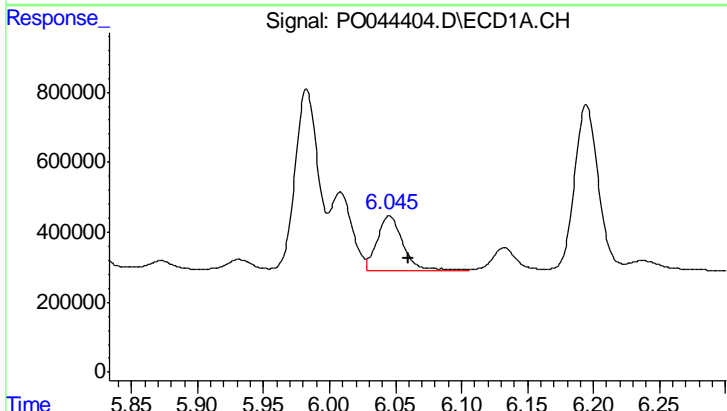
R.T.: 6.008 min  
 Delta R.T.: -0.015 min  
 Response: 2510169  
 Conc: 134.42 ng/ml

Instrument :  
 ECD\_O  
 ClientSampleId :  
 AR1660CCC500



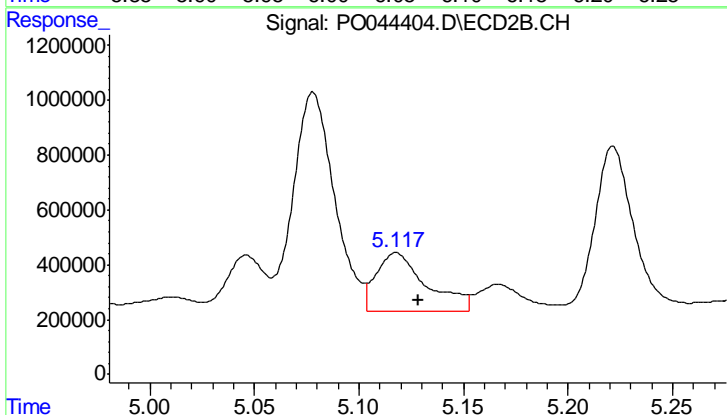
#23 AR-1248-3

R.T.: 5.078 min  
 Delta R.T.: -0.013 min  
 Response: 11010158  
 Conc: 319.94 ng/ml



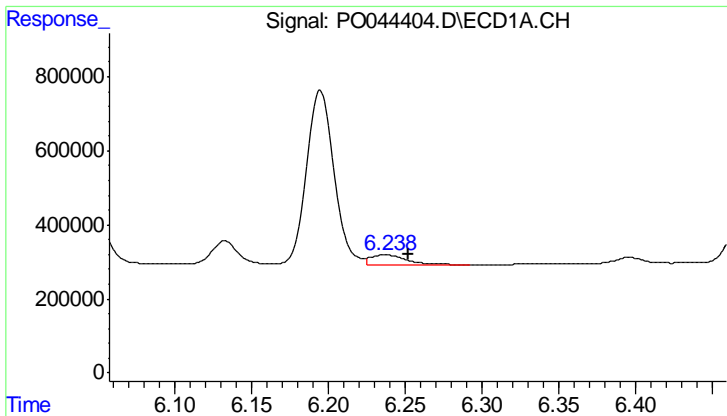
#24 AR-1248-4

R.T.: 6.045 min  
 Delta R.T.: -0.015 min  
 Response: 2106027  
 Conc: 111.59 ng/ml



#24 AR-1248-4

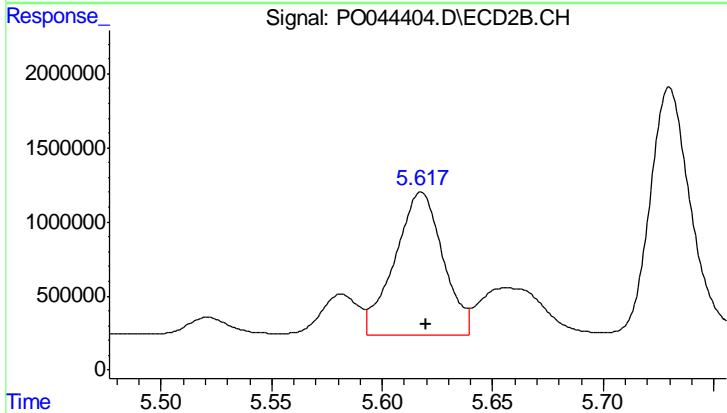
R.T.: 5.117 min  
 Delta R.T.: -0.011 min  
 Response: 3664470  
 Conc: 129.75 ng/ml



#25 AR-1248-5

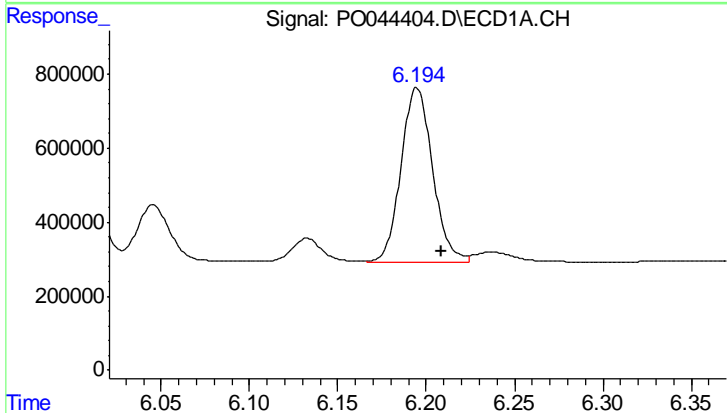
R.T.: 6.238 min  
 Delta R.T.: -0.014 min  
 Response: 466702  
 Conc: 37.93 ng/ml

Instrument :  
 ECD\_O  
 ClientSampleId :  
 AR1660CCC500



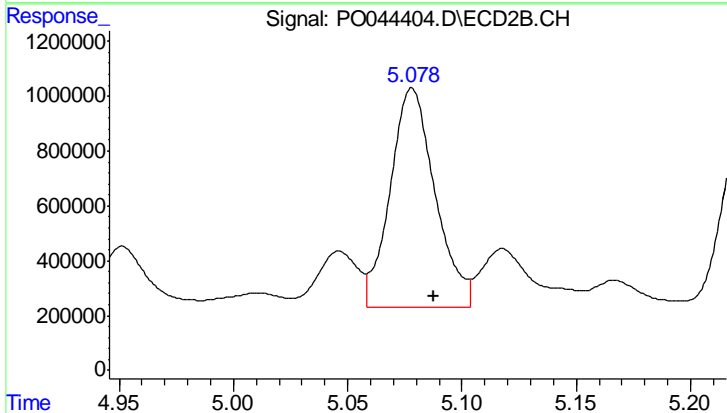
#25 AR-1248-5

R.T.: 5.618 min  
 Delta R.T.: -0.002 min  
 Response: 14676199  
 Conc: 895.03 ng/ml



#26 AR-1254-1

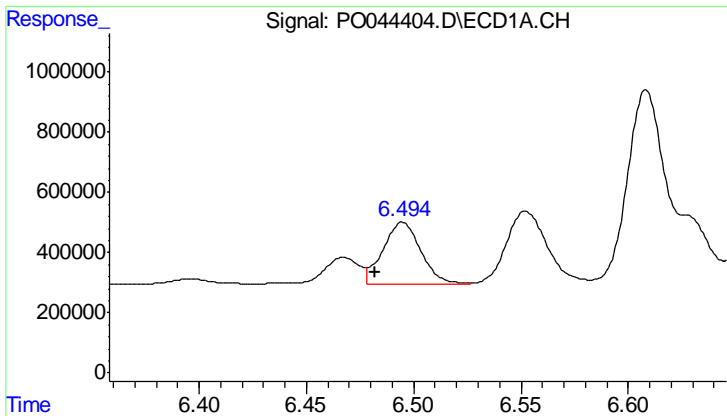
R.T.: 6.195 min  
 Delta R.T.: -0.014 min  
 Response: 5902090  
 Conc: 169.82 ng/ml



#26 AR-1254-1

R.T.: 5.078 min  
 Delta R.T.: -0.010 min  
 Response: 11010158  
 Conc: 236.99 ng/ml

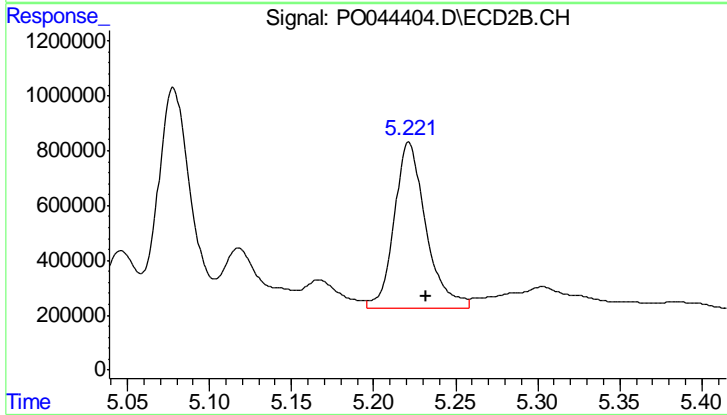




#27 AR-1254-2

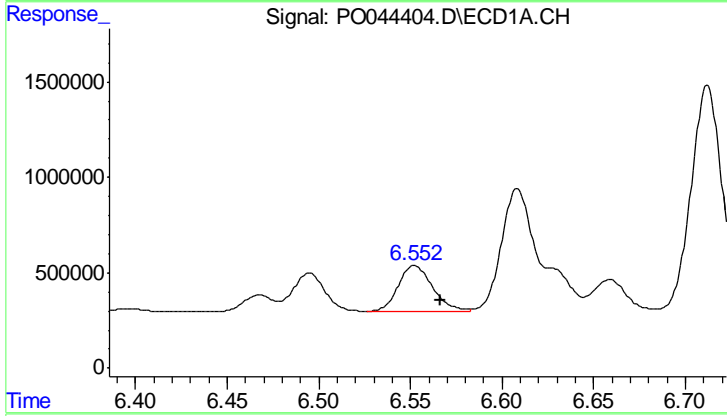
R.T.: 6.495 min  
 Delta R.T.: 0.013 min  
 Response: 2518403  
 Conc: 110.92 ng/ml

Instrument :  
 ECD\_O  
 ClientSampled :  
 AR1660CCC500



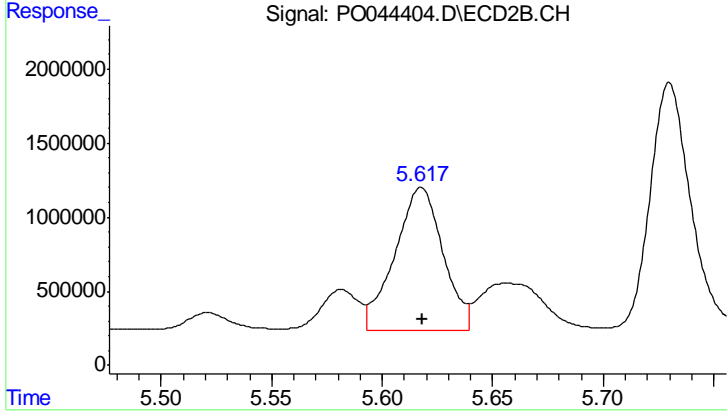
#27 AR-1254-2

R.T.: 5.222 min  
 Delta R.T.: -0.010 min  
 Response: 8088560  
 Conc: 205.82 ng/ml



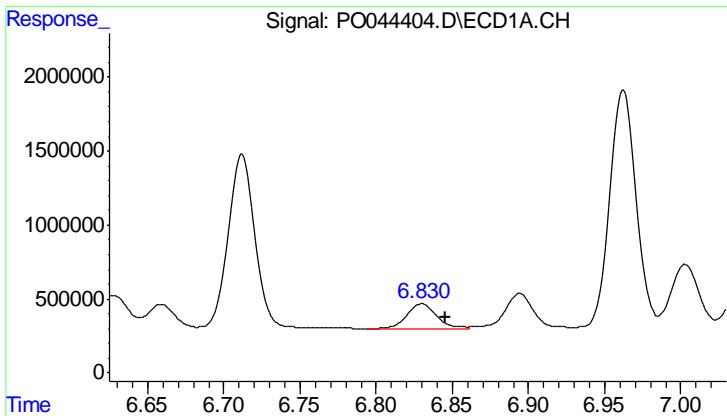
#28 AR-1254-3

R.T.: 6.552 min  
 Delta R.T.: -0.014 min  
 Response: 3197987  
 Conc: 84.77 ng/ml



#28 AR-1254-3

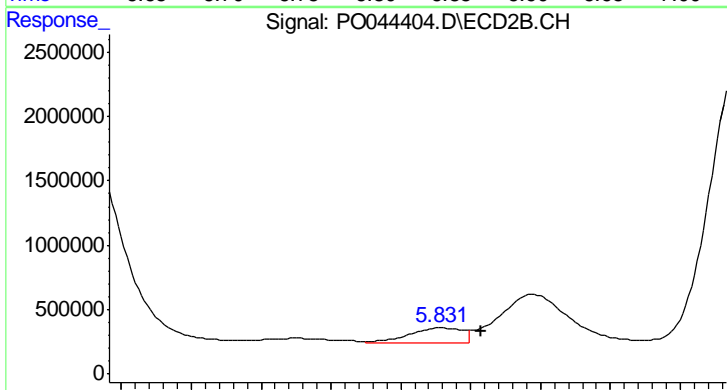
R.T.: 5.618 min  
 Delta R.T.: 0.000 min  
 Response: 14676199  
 Conc: 229.37 ng/ml



#29 AR-1254-4

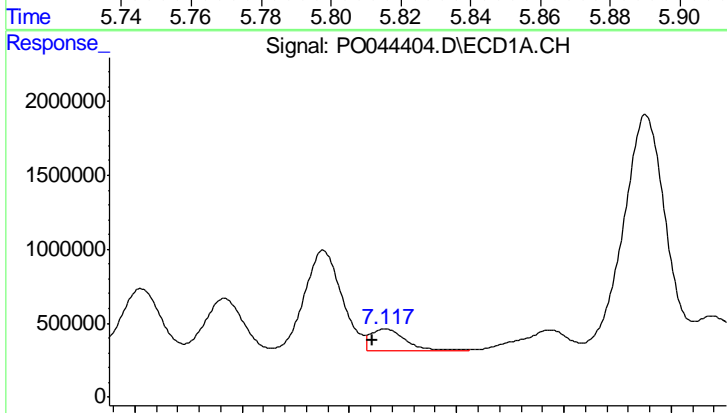
R.T.: 6.830 min  
 Delta R.T.: -0.015 min  
 Response: 2287313  
 Conc: 74.00 ng/ml

Instrument :  
 ECD\_O  
 ClientSampleId :  
 AR1660CCC500



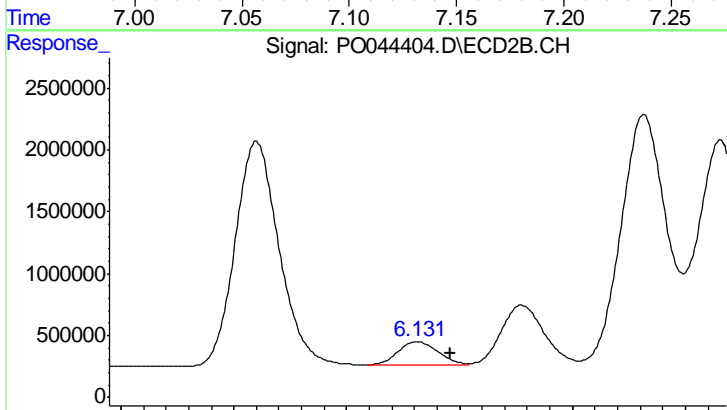
#29 AR-1254-4

R.T.: 5.832 min  
 Delta R.T.: -0.011 min  
 Response: 1205699  
 Conc: 23.33 ng/ml



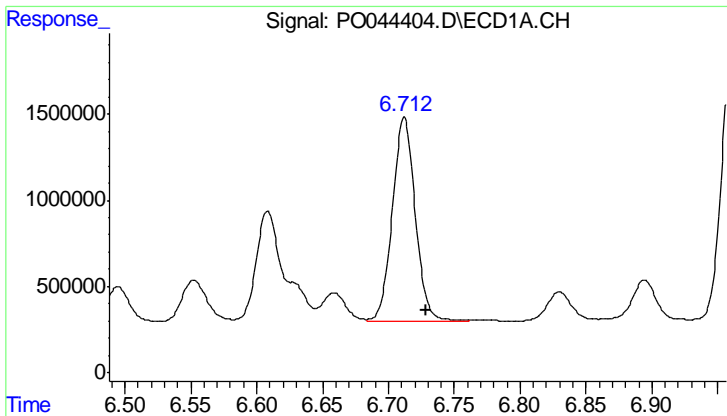
#30 AR-1254-5

R.T.: 7.117 min  
 Delta R.T.: 0.006 min  
 Response: 1753802  
 Conc: 77.28 ng/ml



#30 AR-1254-5

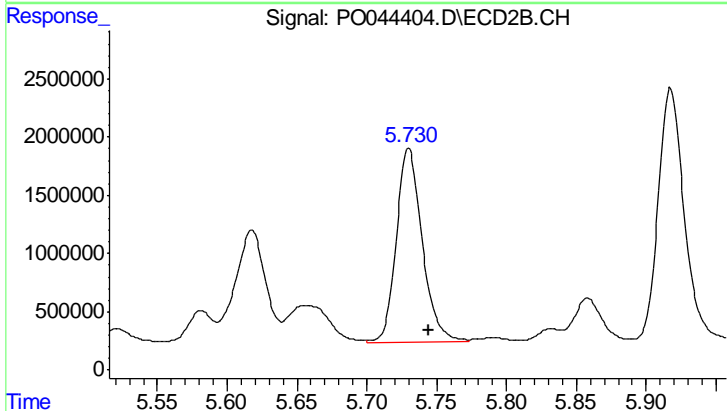
R.T.: 6.131 min  
 Delta R.T.: -0.014 min  
 Response: 2282352  
 Conc: 76.37 ng/ml



#31 AR-1260-1

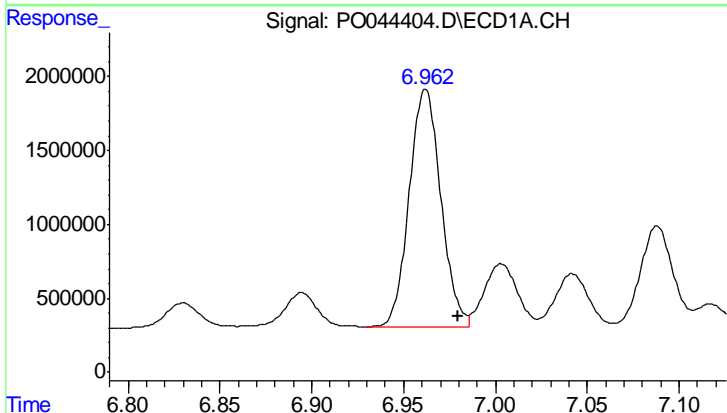
R.T.: 6.712 min  
 Delta R.T.: -0.016 min  
 Response: 14419988  
 Conc: 558.23 ng/ml

Instrument :  
 ECD\_O  
 ClientSampled :  
 AR1660CCC500



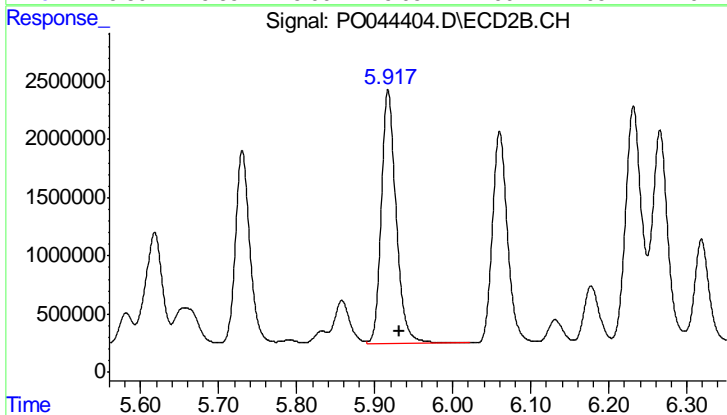
#31 AR-1260-1

R.T.: 5.730 min  
 Delta R.T.: -0.014 min  
 Response: 21522921  
 Conc: 538.98 ng/ml



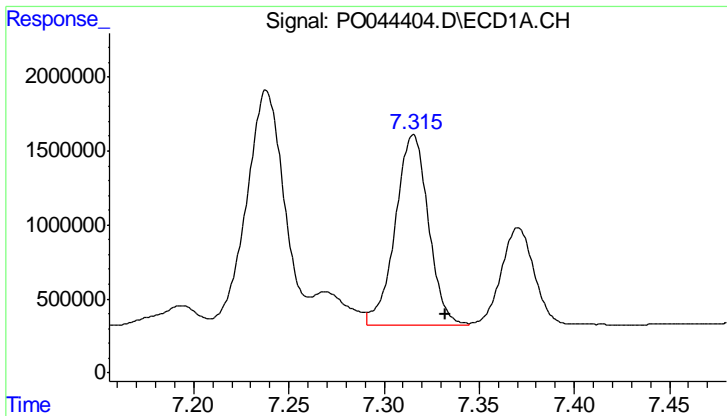
#32 AR-1260-2

R.T.: 6.962 min  
 Delta R.T.: -0.018 min  
 Response: 19278384  
 Conc: 556.17 ng/ml



#32 AR-1260-2

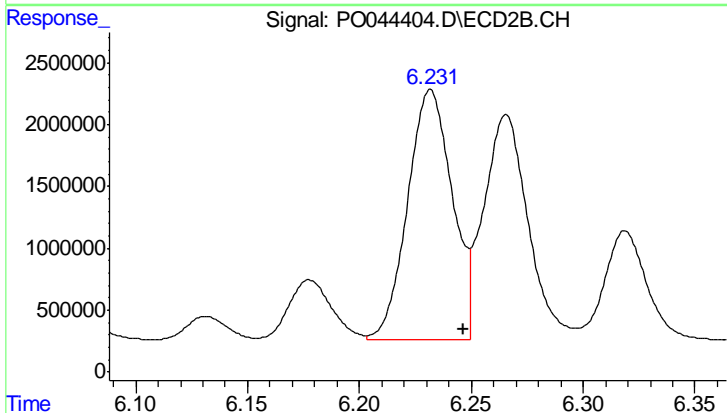
R.T.: 5.917 min  
 Delta R.T.: -0.013 min  
 Response: 28461657  
 Conc: 529.19 ng/ml



#33 AR-1260-3

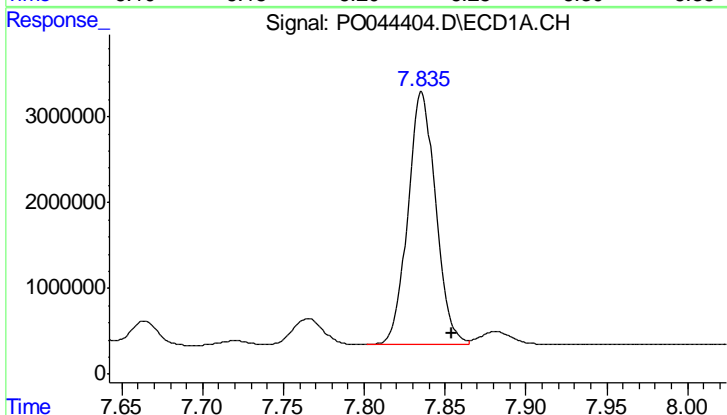
R.T.: 7.316 min  
 Delta R.T.: -0.017 min  
 Response: 15666863  
 Conc: 554.70 ng/ml

Instrument :  
 ECD\_O  
 ClientSampled :  
 AR1660CCC500



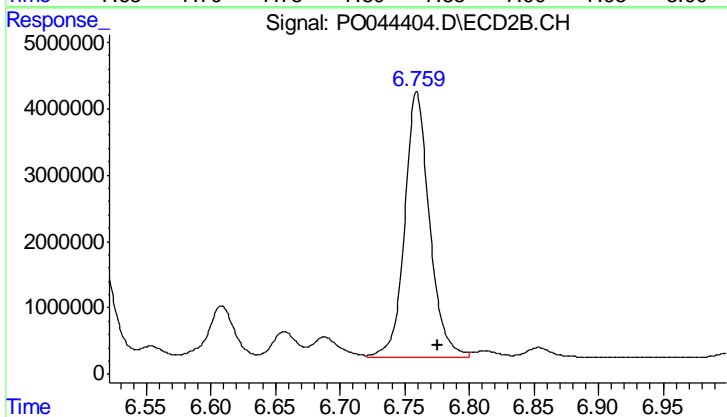
#33 AR-1260-3

R.T.: 6.232 min  
 Delta R.T.: -0.014 min  
 Response: 27945846  
 Conc: 511.42 ng/ml



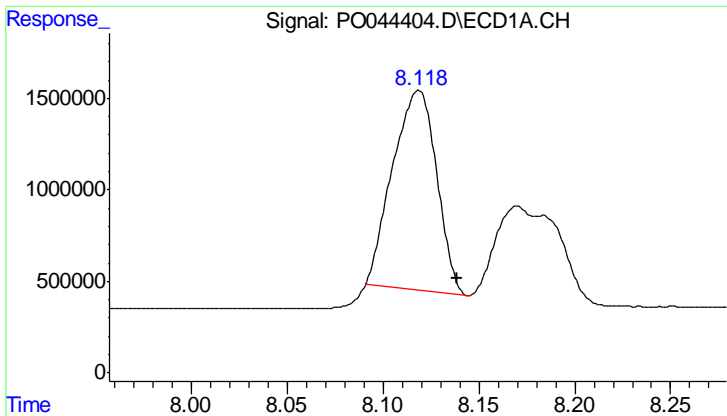
#34 AR-1260-4

R.T.: 7.836 min  
 Delta R.T.: -0.019 min  
 Response: 35319741  
 Conc: 536.04 ng/ml



#34 AR-1260-4

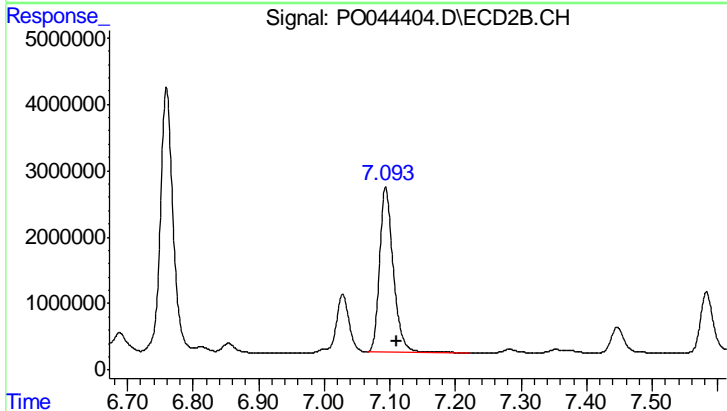
R.T.: 6.759 min  
 Delta R.T.: -0.016 min  
 Response: 53565851  
 Conc: 488.28 ng/ml



#35 AR-1260-5

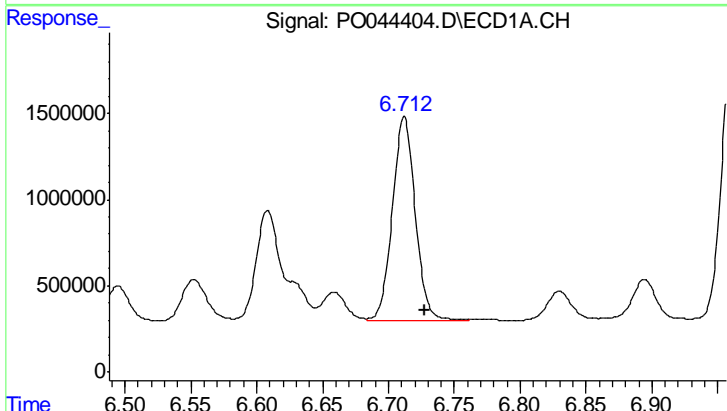
R.T.: 8.119 min  
 Delta R.T.: -0.020 min  
 Response: 17420758  
 Conc: 430.32 ng/ml

Instrument :  
 ECD\_O  
 ClientSampleId :  
 AR1660CCC500



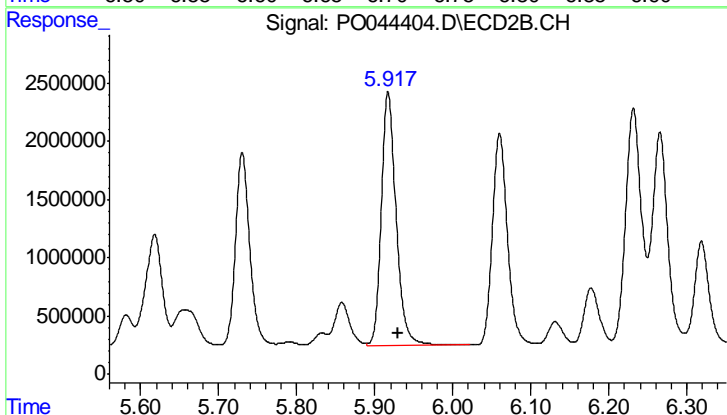
#35 AR-1260-5

R.T.: 7.094 min  
 Delta R.T.: -0.016 min  
 Response: 35713818  
 Conc: 462.81 ng/ml



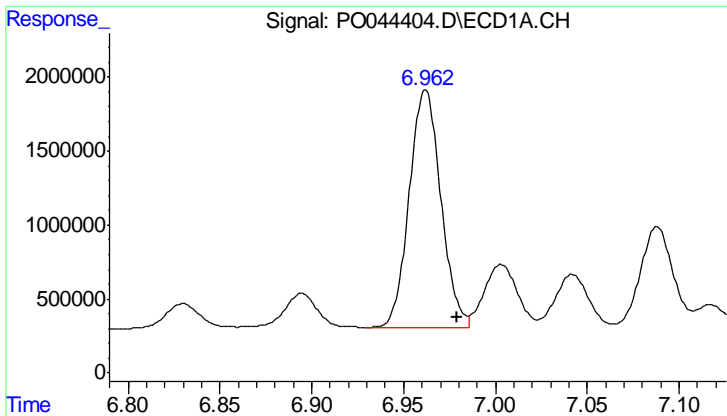
#36 AR-1262-1

R.T.: 6.712 min  
 Delta R.T.: -0.015 min  
 Response: 14419988  
 Conc: 691.66 ng/ml



#36 AR-1262-1

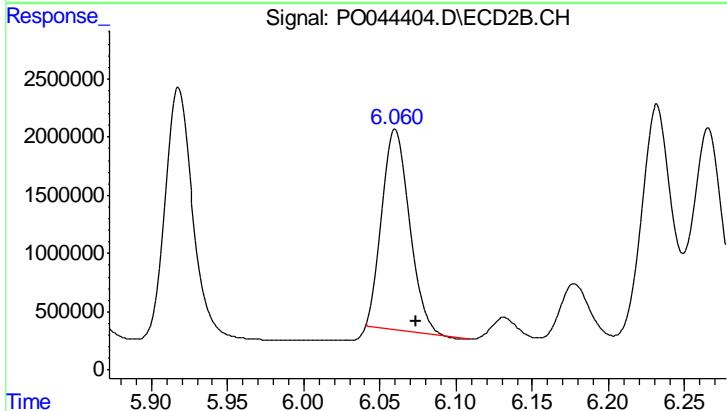
R.T.: 5.917 min  
 Delta R.T.: -0.013 min  
 Response: 28461657  
 Conc: 670.97 ng/ml



#37 AR-1262-2

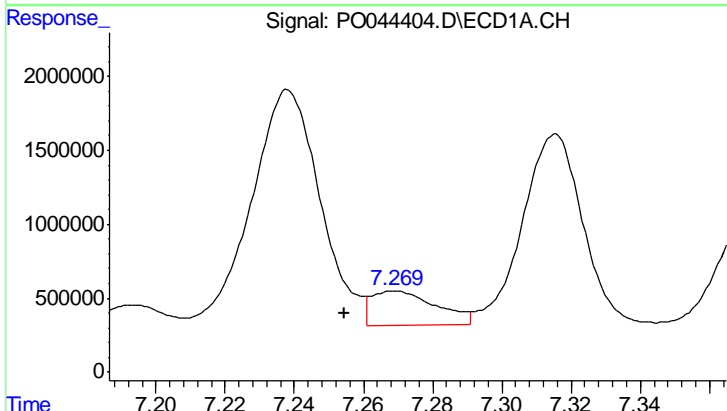
R.T.: 6.962 min  
 Delta R.T.: -0.017 min  
 Response: 19278384  
 Conc: 696.03 ng/ml

Instrument :  
 ECD\_O  
 ClientSampleId :  
 AR1660CCC500



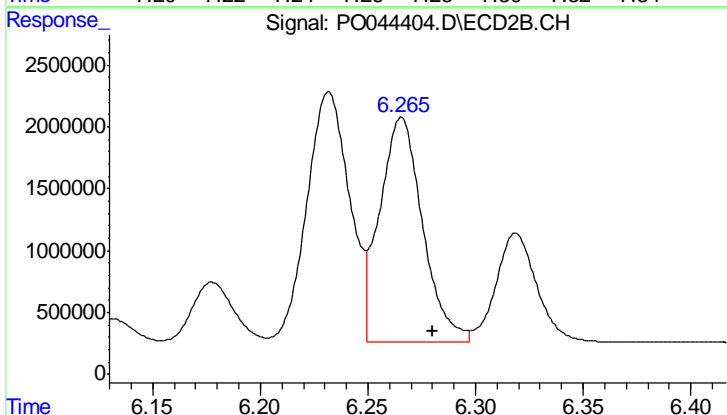
#37 AR-1262-2

R.T.: 6.060 min  
 Delta R.T.: -0.013 min  
 Response: 21641781  
 Conc: 549.08 ng/ml



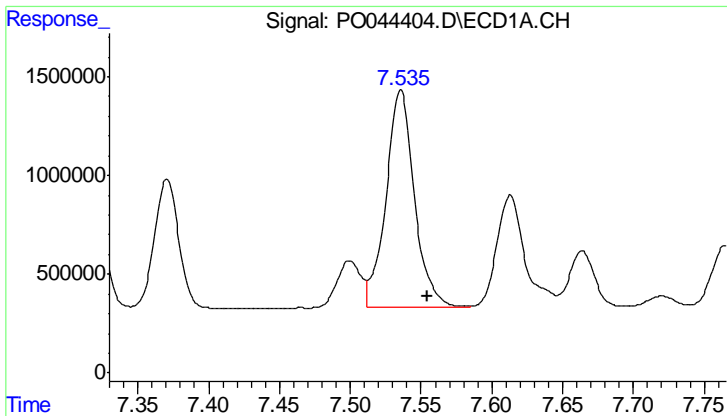
#38 AR-1262-3

R.T.: 7.269 min  
 Delta R.T.: 0.015 min  
 Response: 3000961  
 Conc: 116.65 ng/ml



#38 AR-1262-3

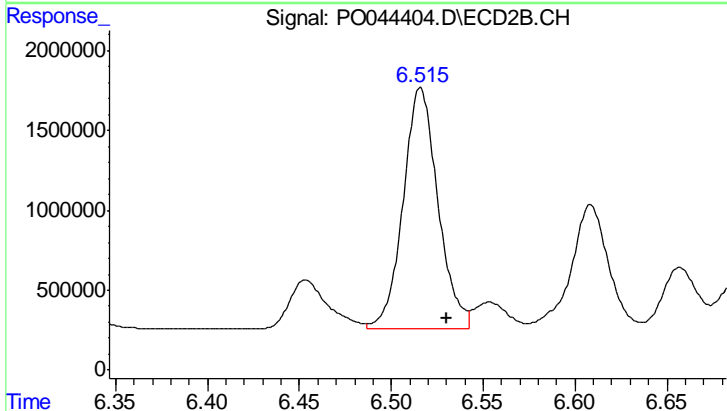
R.T.: 6.266 min  
 Delta R.T.: -0.015 min  
 Response: 25350280  
 Conc: 370.79 ng/ml



#39 AR-1262-4

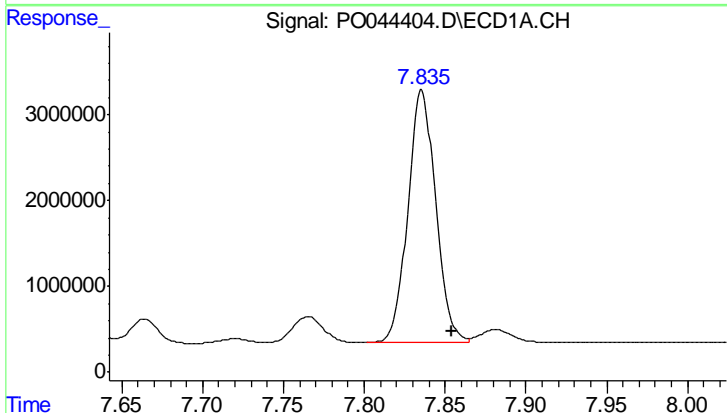
R.T.: 7.536 min  
 Delta R.T.: -0.019 min  
 Response: 15445642  
 Conc: 434.62 ng/ml

Instrument :  
 ECD\_O  
 ClientSampleId :  
 AR1660CCC500



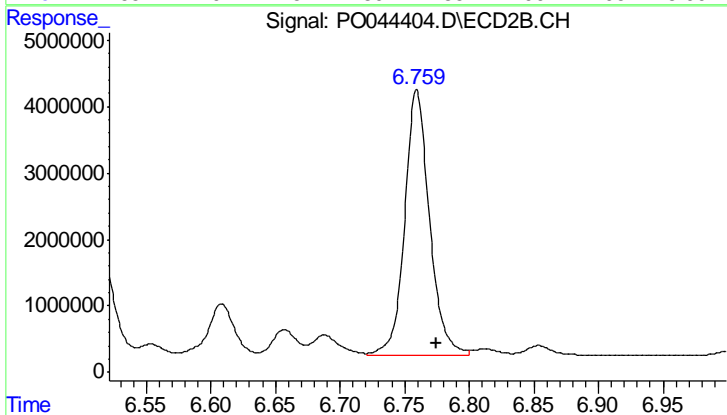
#39 AR-1262-4

R.T.: 6.516 min  
 Delta R.T.: -0.014 min  
 Response: 19931958  
 Conc: 358.35 ng/ml



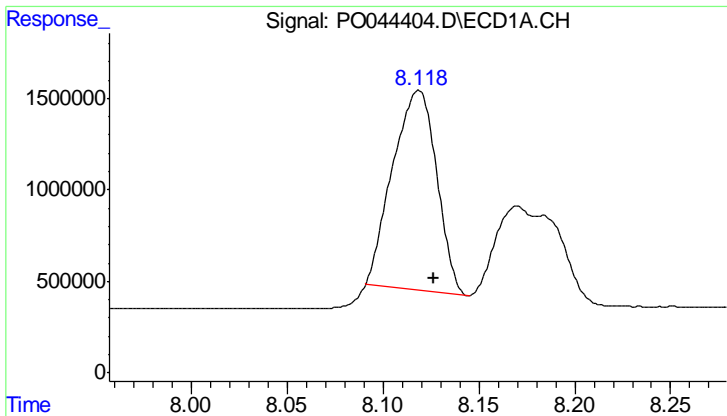
#40 AR-1262-5

R.T.: 7.836 min  
 Delta R.T.: -0.019 min  
 Response: 35319741  
 Conc: 444.91 ng/ml



#40 AR-1262-5

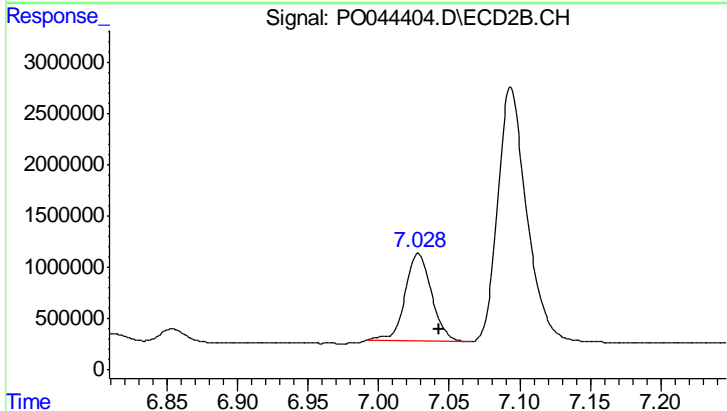
R.T.: 6.759 min  
 Delta R.T.: -0.015 min  
 Response: 53565851  
 Conc: 414.57 ng/ml



#41 AR-1268-1

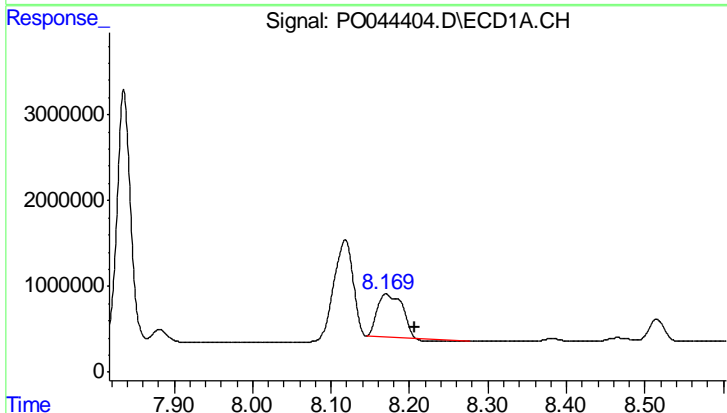
R.T.: 8.119 min  
 Delta R.T.: -0.008 min  
 Response: 17420758  
 Conc: 218.83 ng/ml

Instrument :  
 ECD\_O  
 ClientSampled :  
 AR1660CCC500



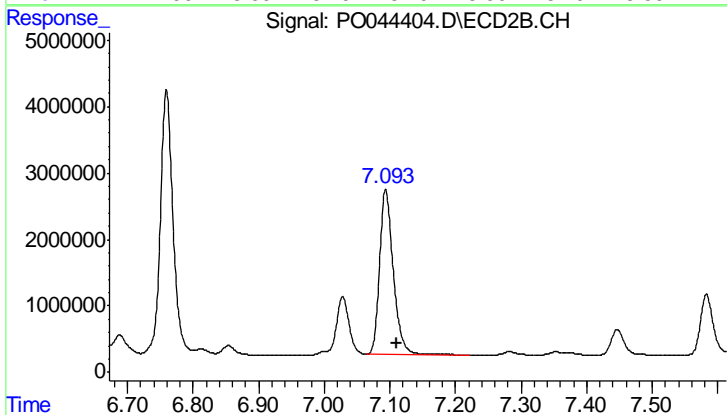
#41 AR-1268-1

R.T.: 7.028 min  
 Delta R.T.: -0.015 min  
 Response: 11286220  
 Conc: 88.30 ng/ml



#42 AR-1268-2

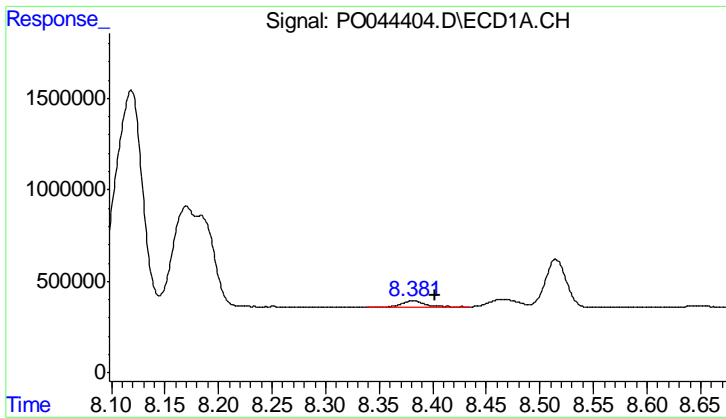
R.T.: 8.170 min  
 Delta R.T.: -0.037 min  
 Response: 10802904  
 Conc: 151.32 ng/ml



#42 AR-1268-2

R.T.: 7.094 min  
 Delta R.T.: -0.016 min  
 Response: 35713818  
 Conc: 302.70 ng/ml

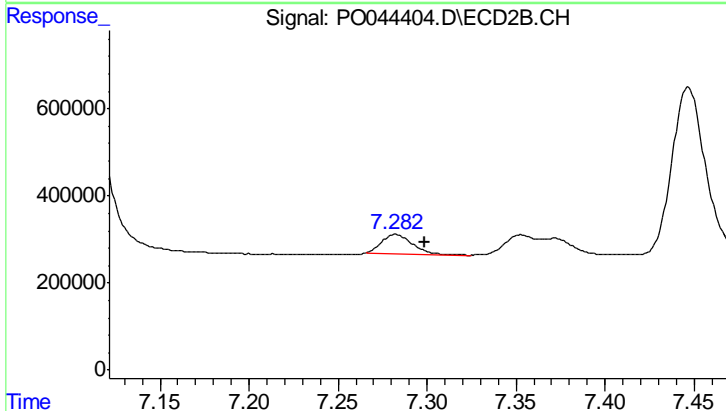




#43 AR-1268-3

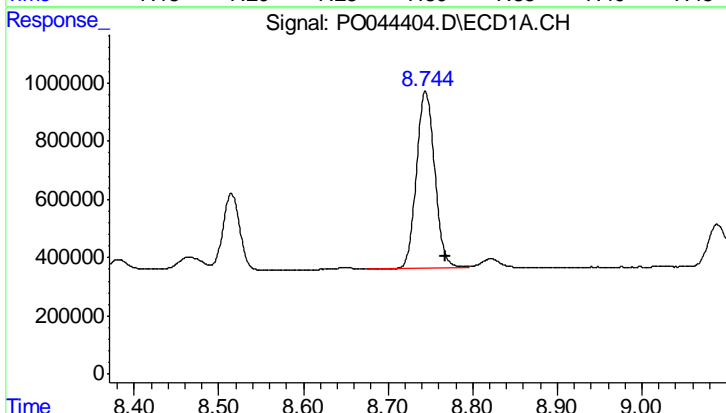
R.T.: 8.381 min  
 Delta R.T.: -0.022 min  
 Response: 562309  
 Conc: 8.93 ng/ml

Instrument :  
 ECD\_O  
 ClientSampleId :  
 AR1660CCC500



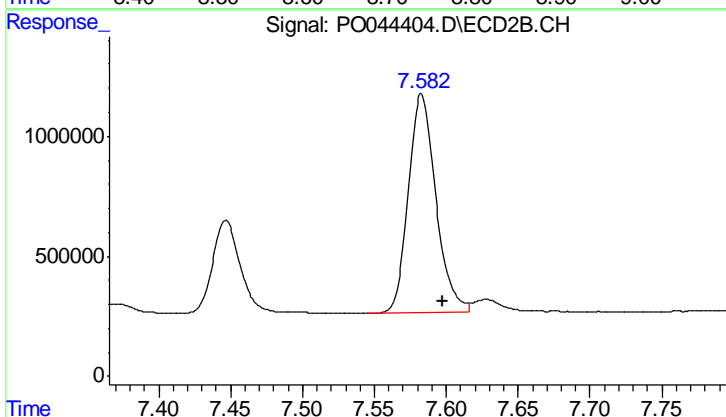
#43 AR-1268-3

R.T.: 7.282 min  
 Delta R.T.: -0.016 min  
 Response: 512569  
 Conc: 4.98 ng/ml



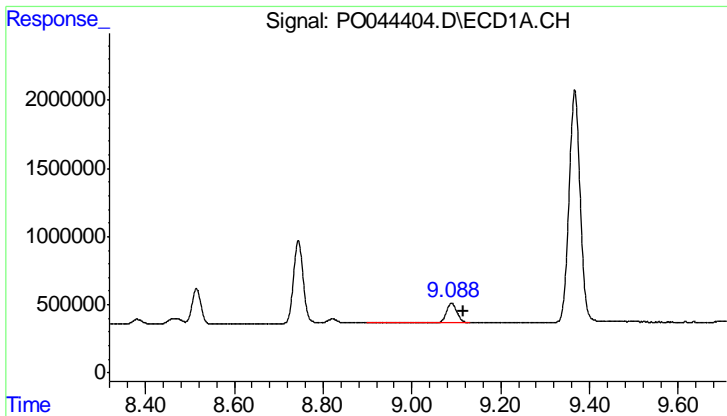
#44 AR-1268-4

R.T.: 8.744 min  
 Delta R.T.: -0.024 min  
 Response: 9215793  
 Conc: 335.06 ng/ml



#44 AR-1268-4

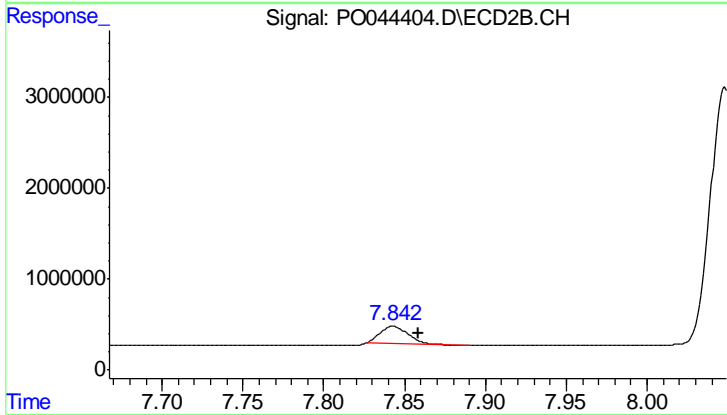
R.T.: 7.583 min  
 Delta R.T.: -0.015 min  
 Response: 12046948  
 Conc: 292.86 ng/ml



#45 AR-1268-5

R.T.: 9.089 min  
Delta R.T.: -0.028 min  
Response: 2211562  
Conc: 11.10 ng/ml

Instrument :  
ECD\_O  
ClientSampleId :  
AR1660CCC500



#45 AR-1268-5

R.T.: 7.843 min  
Delta R.T.: -0.016 min  
Response: 2352400  
Conc: 7.83 ng/ml