

Data Path : Z:\pestpcbsrv\HPCHEM1\ECD_0\Data\P0050919\
 Data File : P0056005.D
 Signal(s) : Signal #1: ECD1A.CH Signal #2: ECD2B.CH
 Acq On : 09 May 2019 12:31
 Operator : SM/SJ
 Sample : K2626-03DL 10X
 Misc :
 ALS Vial : 11 Sample Multiplier: 1

Instrument :
 ECD_0
 ClientSampled :
 RI2-2(18-24)DL

Integration File signal 1: autoint1.e
 Integration File signal 2: autoint2.e
 Quant Time: May 10 05:00:27 2019
 Quant Method : Z:\pestpcbsrv\HPCHEM1\ECD_0\methods\P0050319.M
 Quant Title : GC EXTRACTABLES
 QLast Update : Fri May 03 15:20:04 2019
 Response via : Initial Calibration
 Integrator: ChemStation 6890 Scale Mode: Small noise peaks clipped

Volume Inj. : 2 µl
 Signal #1 Phase : ZB-MR1 Signal #2 Phase: ZB-MR2
 Signal #1 Info : 30Mx0.32mmx 0.50µ Signal #2 Info : 30M x 0.32mm x 0.25µm

Compound	RT#1	RT#2	Resp#1	Resp#2	ng/ml	ng/ml
System Monitoring Compounds						
1) SA Tetrachlo...	4.270	3.587	107000	99850	3.576	3.535
2) SA Decachlor...	9.860	8.531	73507	45002	1.965	1.664
Target Compounds						
3) L1 AR-1016-1	5.431	4.657	379983	348016	267.383	258.958
4) L1 AR-1016-2	5.453	4.676	567880	492586	286.971	269.770
5) L1 AR-1016-3	5.515	4.850	214063	246031	167.010	245.509 #
6) L1 AR-1016-4	5.613	4.890	279954	934382	267.840	1148.405 #
7) L1 AR-1016-5	5.904	5.101	853071	670469	757.262	609.042
9) L2 AR-1221-2	4.643	3.956	57321	49527	170.935	178.572
10) L2 AR-1221-3	4.643	3.956	57321	49527	57.002	55.742
11) L3 AR-1232-1	4.643	3.956	57321	49527	66.737	66.921
12) L3 AR-1232-2	5.166	4.676	173322	492586	357.279	562.025 #
13) L3 AR-1232-3	5.453	4.850	567880	246031	586.965	512.918
14) L3 AR-1232-4	5.613	4.930	279954	412584	550.506	971.326 #
15) L3 AR-1232-5	5.702	5.101	1091401	670469	2513.740	1383.534 #
16) L4 AR-1242-1	5.431	4.657	379983	348016	313.830	310.556
17) L4 AR-1242-2	5.453	4.676	567880	492586	336.343	323.761
18) L4 AR-1242-3	5.515	4.850	214063	246031	195.395	284.096 #
19) L4 AR-1242-4	5.613	4.930	279954	412584	311.122	492.518 #
20) L4 AR-1242-5	6.345	5.450	744329	2172914	680.394	1810.165 #
21) L5 AR-1248-1	5.431	4.657	379983	348016	419.816	415.032
22) L5 AR-1248-2	5.702	4.890	1091401	934382	818.376	850.394
23) L5 AR-1248-3	5.904	4.930	853071	412584	577.676	363.463 #
24) L5 AR-1248-4	6.306	5.101	1018506	670469	584.095	477.483
25) L5 AR-1248-5	6.345	5.491	744329	478648	445.619	319.586 #
26) L6 AR-1254-1	6.278	5.450	1754280	2172914	835.438	811.903
27) L6 AR-1254-2	6.496	5.596	2571499	1674960	774.822	685.701
28) L6 AR-1254-3	6.860	5.996	2580285	2556472	709.742	644.335
29) L6 AR-1254-4	7.145	6.223	1737549	1573496	638.641	586.869
30) L6 AR-1254-5	7.561	6.637	1748616	1990612	610.099	550.093
31) L7 AR-1260-1	7.021	6.123	982919	1185158	455.162	537.929
32) L7 AR-1260-2	7.278	6.310	1063016	881899	405.904	288.809 #
33) L7 AR-1260-3	7.622	6.462	282427	673575	141.214	270.292 #
34) L7 AR-1260-4	7.850	6.931	664550	122356	287.360	59.296 #
35) L7 AR-1260-5	8.167	7.170	263654	306391	62.149	61.006
36) L8 AR-1262-1	7.622	6.705	282427	138013	88.097	33.655 #
37) L8 AR-1262-2	8.167	7.170	263654	306391	49.109	49.000
38) L8 AR-1262-3	8.479	7.451	251968	32490	69.434	13.192 #
39) L8 AR-1262-4	8.528	7.514	94803	244265	34.917	59.650 #
40) L8 AR-1262-5	9.165	8.009	42252	35236	23.389	20.677
41) L9 AR-1268-1	8.479	7.451	251968	32490	41.724	4.689 #
42) L9 AR-1268-2	8.528	7.514	94803	244265	17.320	42.935 #

Data Path : Z:\pestpcbsrv\HPCHEM1\ECD_0\Data\P0050919\
 Data File : P0056005.D
 Signal(s) : Signal #1: ECD1A.CH Signal #2: ECD2B.CH
 Acq On : 09 May 2019 12:31
 Operator : SM/SJ
 Sample : K2626-03DL 10X
 Misc :
 ALS Vial : 11 Sample Multiplier: 1

Instrument :
 ECD_0
 ClientSampleId :
 RI2-2(18-24)DL

Integration File signal 1: autoint1.e
 Integration File signal 2: autoint2.e
 Quant Time: May 10 05:00:27 2019
 Quant Method : Z:\pestpcbsrv\HPCHEM1\ECD_0\methods\P0050319.M
 Quant Title : GC EXTRACTABLES
 QLast Update : Fri May 03 15:20:04 2019
 Response via : Initial Calibration
 Integrator: ChemStation 6890 Scale Mode: Small noise peaks clipped

Volume Inj. : 2 µl
 Signal #1 Phase : ZB-MR1 Signal #2 Phase: ZB-MR2
 Signal #1 Info : 30Mx0.32mmx 0.50µ Signal #2 Info : 30M x 0.32mm x 0.25µm

	Compound	RT#1	RT#2	Resp#1	Resp#2	ng/ml	ng/ml
43)	L9 AR-1268-3	0.000	7.773	0	30192	N.D.	6.392 #
44)	L9 AR-1268-4	9.165	8.009	42252	35236	21.533	18.626
45)	L9 AR-1268-5	0.000	8.286	0	28627	N.D.	2.351 #

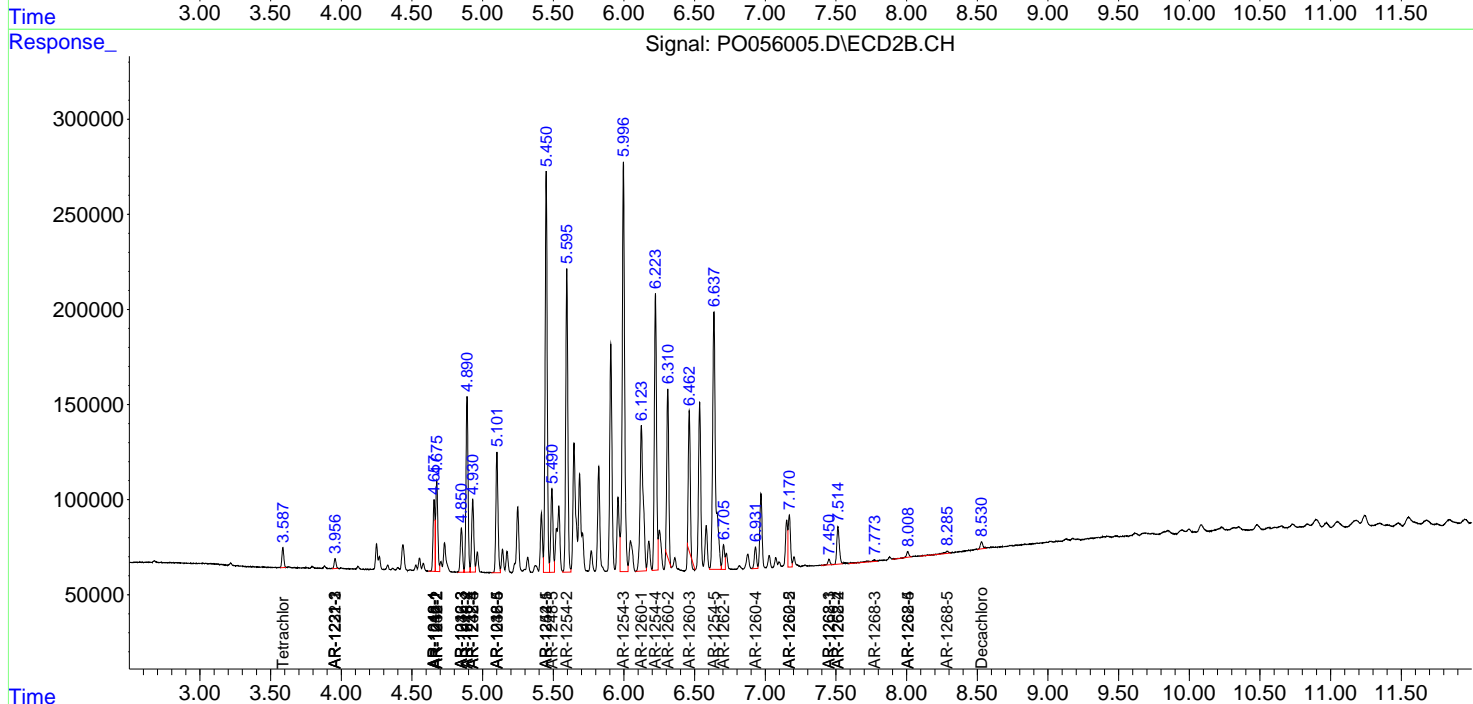
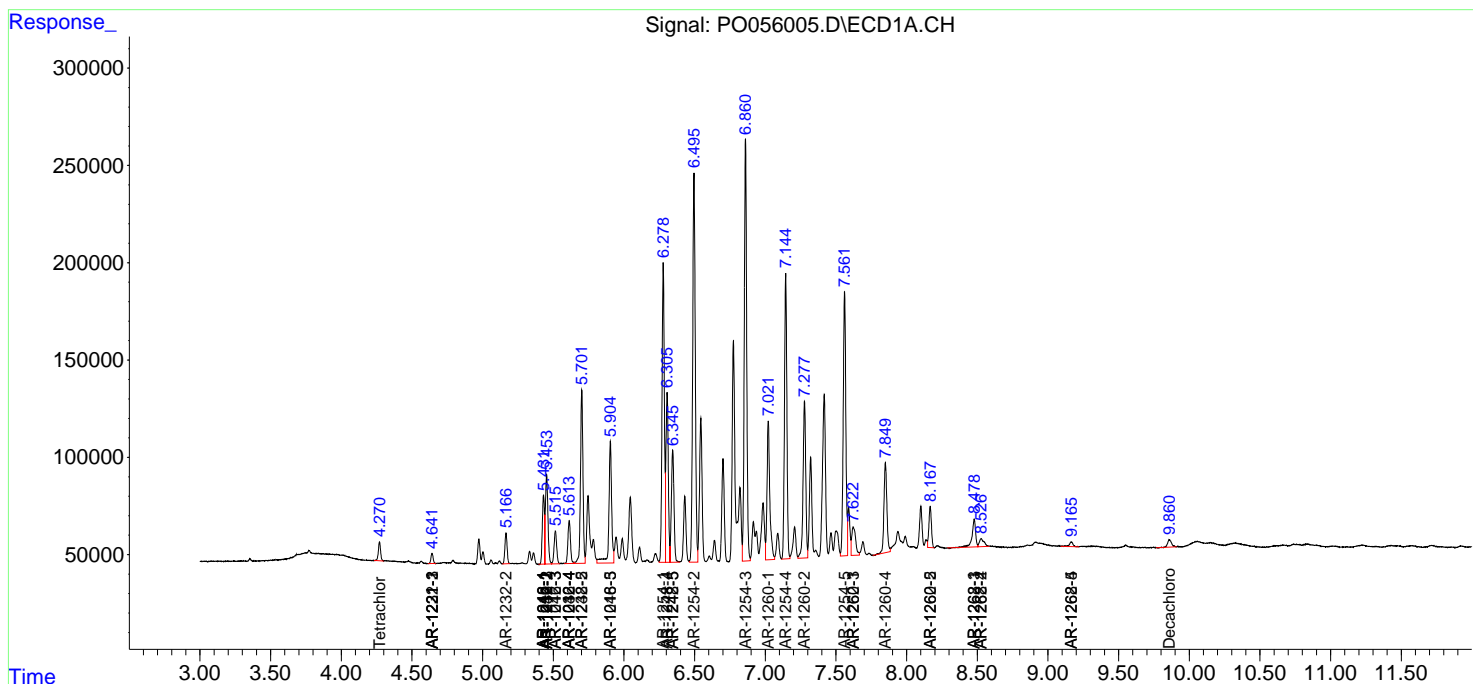
(f)=RT Delta > 1/2 Window (#)=Amounts differ by > 25% (m)=manual int.

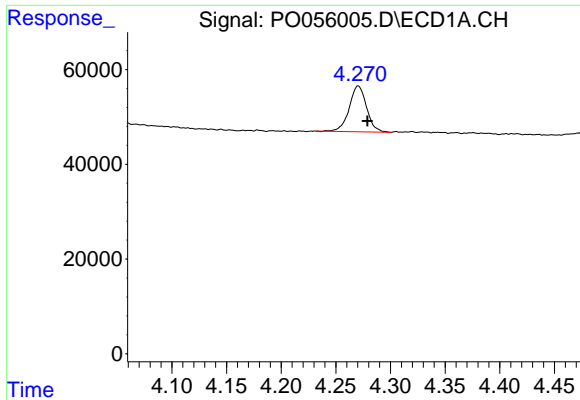
Data Path : Z:\pestpcbsrv\HPCHEM1\ECD_0\Data\P0050919\
 Data File : P0056005.D
 Signal(s) : Signal #1: ECD1A.CH Signal #2: ECD2B.CH
 Acq On : 09 May 2019 12:31
 Operator : SM/SJ
 Sample : K2626-03DL 10X
 Misc :
 ALS Vial : 11 Sample Multiplier: 1

Instrument :
 ECD_O
 ClientSampled :
 RI2-2(18-24)DL

Integration File signal 1: autoint1.e
 Integration File signal 2: autoint2.e
 Quant Time: May 10 05:00:27 2019
 Quant Method : Z:\pestpcbsrv\HPCHEM1\ECD_0\methods\P0050319.M
 Quant Title : GC EXTRACTABLES
 QLast Update : Fri May 03 15:20:04 2019
 Response via : Initial Calibration
 Integrator: ChemStation 6890 Scale Mode: Small noise peaks clipped

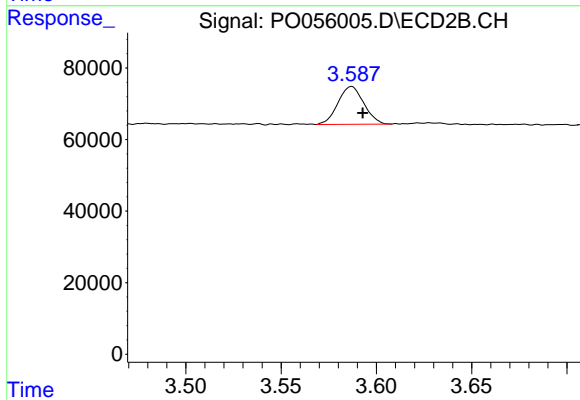
Volume Inj. : 2 µl
 Signal #1 Phase : ZB-MR1 Signal #2 Phase: ZB-MR2
 Signal #1 Info : 30Mx0.32mmx 0.50µ Signal #2 Info : 30M x 0.32mm x 0.25µm



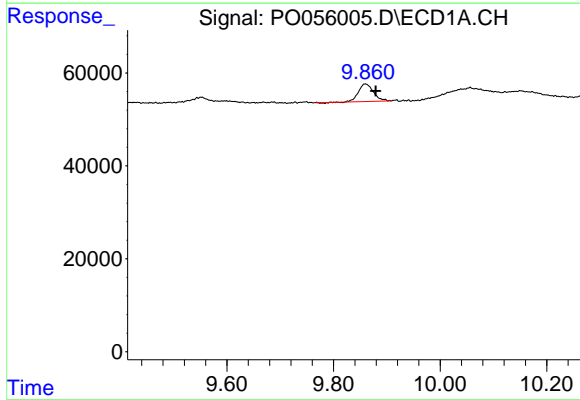


#1 Tetrachloro-m-xylene
 R.T.: 4.270 min
 Delta R.T.: -0.009 min
 Response: 107000
 Conc: 3.58 ng/ml

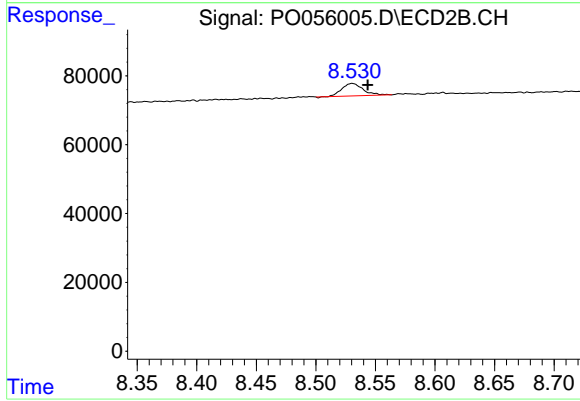
Instrument :
 ECD_O
 ClientSampleId :
 RI2-2(18-24)DL



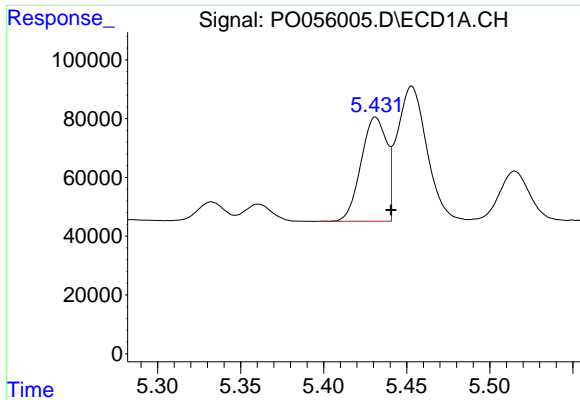
#1 Tetrachloro-m-xylene
 R.T.: 3.587 min
 Delta R.T.: -0.006 min
 Response: 99850
 Conc: 3.54 ng/ml



#2 Decachlorobiphenyl
 R.T.: 9.860 min
 Delta R.T.: -0.019 min
 Response: 73507
 Conc: 1.96 ng/ml

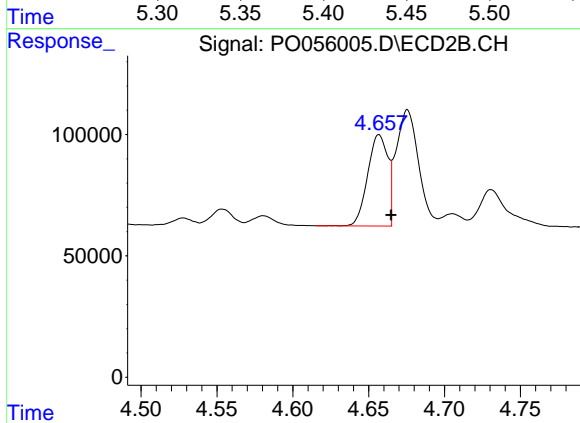


#2 Decachlorobiphenyl
 R.T.: 8.531 min
 Delta R.T.: -0.013 min
 Response: 45002
 Conc: 1.66 ng/ml

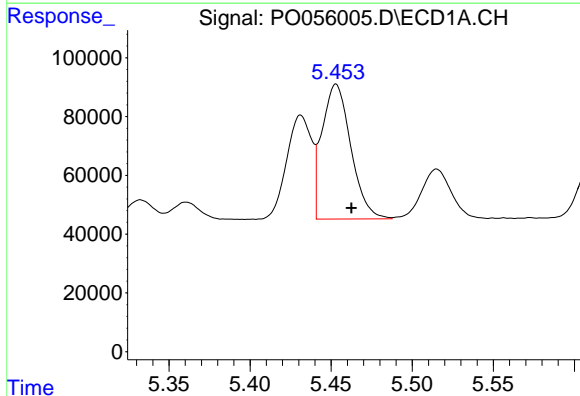


#3 AR-1016-1
 R.T.: 5.431 min
 Delta R.T.: -0.009 min
 Response: 379983
 Conc: 267.38 ng/ml

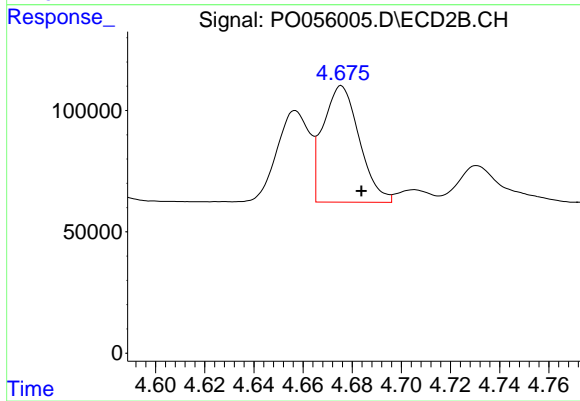
Instrument :
 ECD_O
ClientSampled :
 RI2-2(18-24)DL



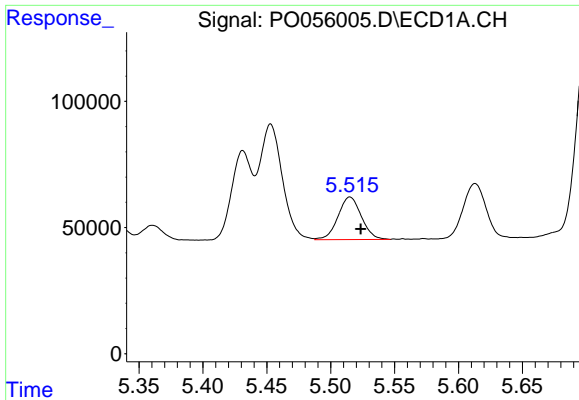
#3 AR-1016-1
 R.T.: 4.657 min
 Delta R.T.: -0.008 min
 Response: 348016
 Conc: 258.96 ng/ml



#4 AR-1016-2
 R.T.: 5.453 min
 Delta R.T.: -0.010 min
 Response: 567880
 Conc: 286.97 ng/ml



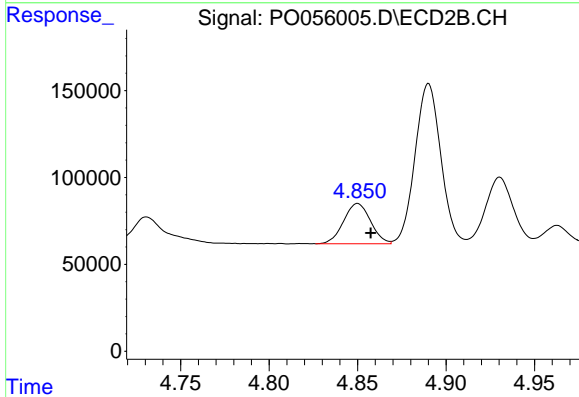
#4 AR-1016-2
 R.T.: 4.676 min
 Delta R.T.: -0.008 min
 Response: 492586
 Conc: 269.77 ng/ml



#5 AR-1016-3

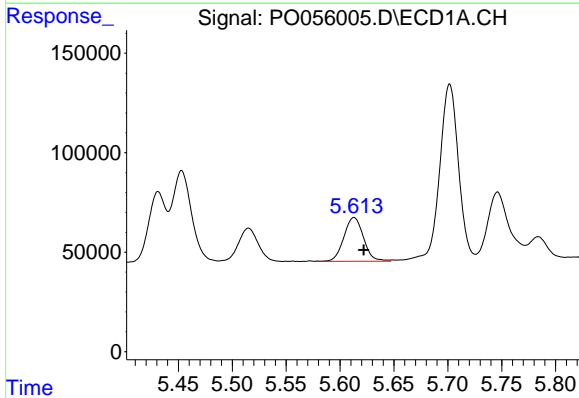
R.T.: 5.515 min
 Delta R.T.: -0.008 min
 Response: 214063
 Conc: 167.01 ng/ml

Instrument :
 ECD_O
ClientSampled :
 RI2-2(18-24)DL



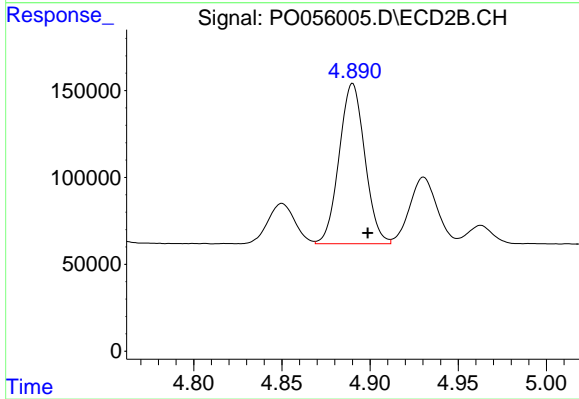
#5 AR-1016-3

R.T.: 4.850 min
 Delta R.T.: -0.007 min
 Response: 246031
 Conc: 245.51 ng/ml



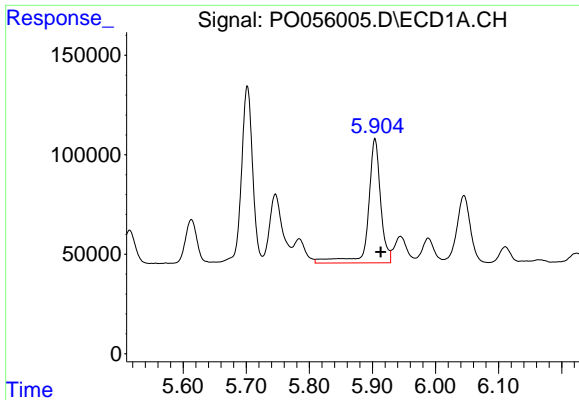
#6 AR-1016-4

R.T.: 5.613 min
 Delta R.T.: -0.009 min
 Response: 279954
 Conc: 267.84 ng/ml



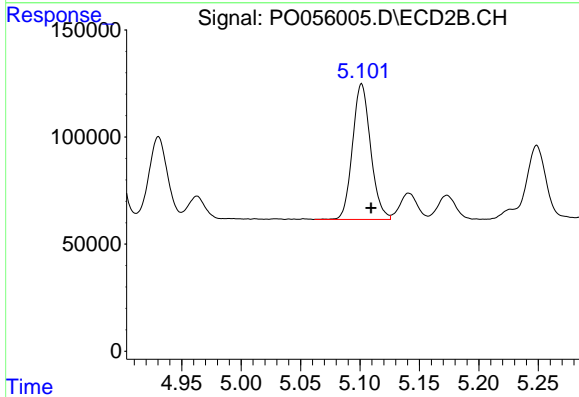
#6 AR-1016-4

R.T.: 4.890 min
 Delta R.T.: -0.009 min
 Response: 934382
 Conc: 1148.41 ng/ml

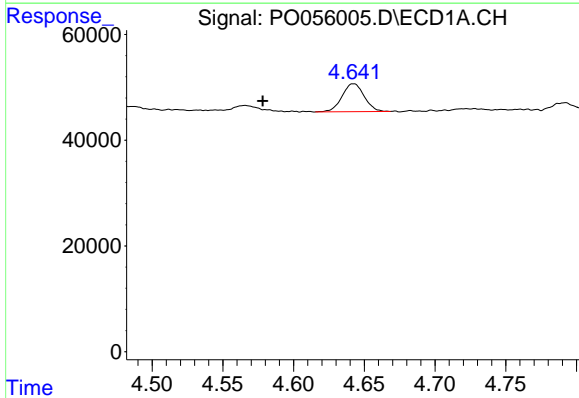


#7 AR-1016-5
 R.T.: 5.904 min
 Delta R.T.: -0.009 min
 Response: 853071
 Conc: 757.26 ng/ml

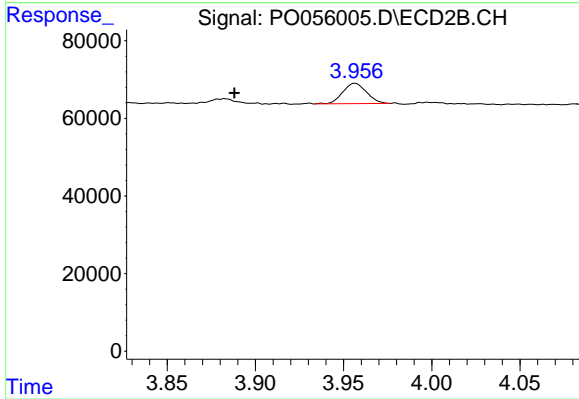
Instrument :
 ECD_O
 ClientSampled :
 RI2-2(18-24)DL



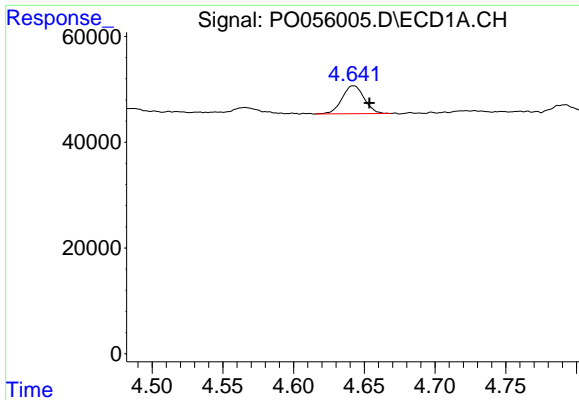
#7 AR-1016-5
 R.T.: 5.101 min
 Delta R.T.: -0.008 min
 Response: 670469
 Conc: 609.04 ng/ml



#9 AR-1221-2
 R.T.: 4.643 min
 Delta R.T.: 0.065 min
 Response: 57321
 Conc: 170.93 ng/ml

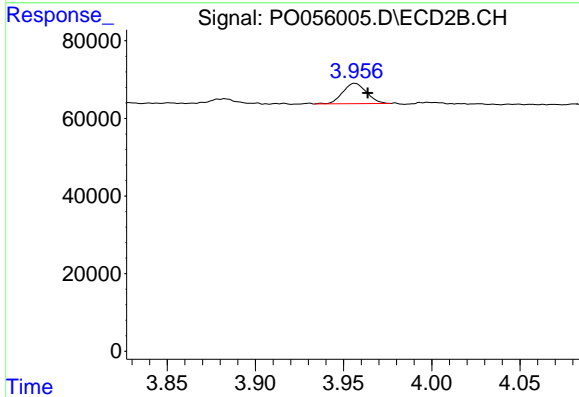


#9 AR-1221-2
 R.T.: 3.956 min
 Delta R.T.: 0.068 min
 Response: 49527
 Conc: 178.57 ng/ml

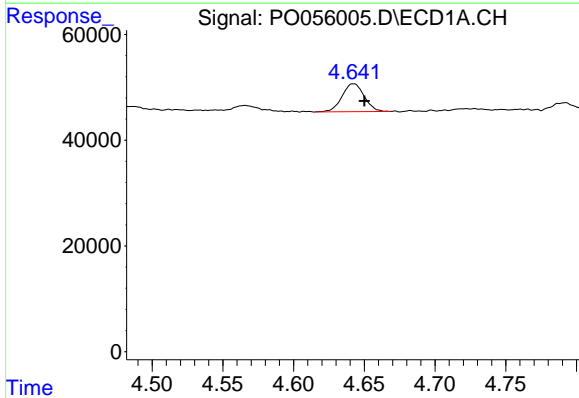


#10 AR-1221-3
 R.T.: 4.643 min
 Delta R.T.: -0.010 min
 Response: 57321
 Conc: 57.00 ng/ml

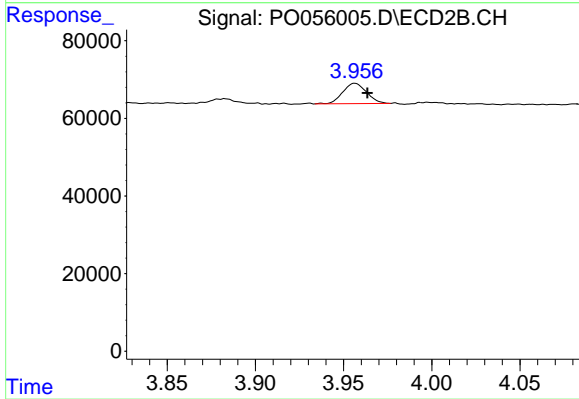
Instrument :
 ECD_O
 ClientSampleId :
 RI2-2(18-24)DL



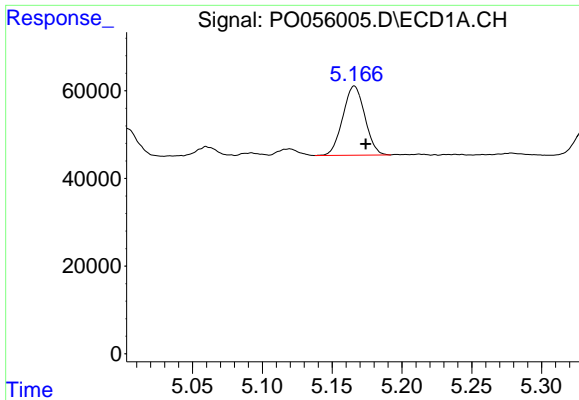
#10 AR-1221-3
 R.T.: 3.956 min
 Delta R.T.: -0.007 min
 Response: 49527
 Conc: 55.74 ng/ml



#11 AR-1232-1
 R.T.: 4.643 min
 Delta R.T.: -0.007 min
 Response: 57321
 Conc: 66.74 ng/ml



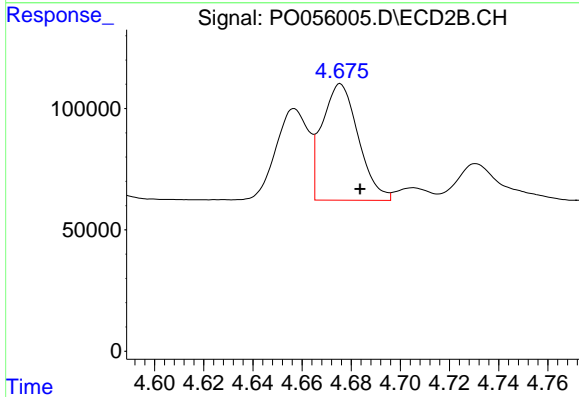
#11 AR-1232-1
 R.T.: 3.956 min
 Delta R.T.: -0.007 min
 Response: 49527
 Conc: 66.92 ng/ml



#12 AR-1232-2

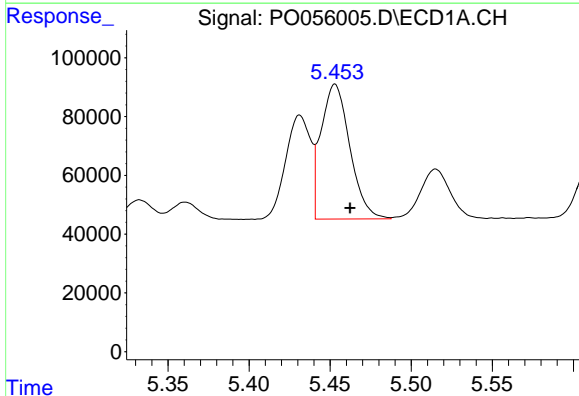
R.T.: 5.166 min
 Delta R.T.: -0.008 min
 Response: 173322
 Conc: 357.28 ng/ml

Instrument :
 ECD_O
 ClientSampleId :
 RI2-2(18-24)DL



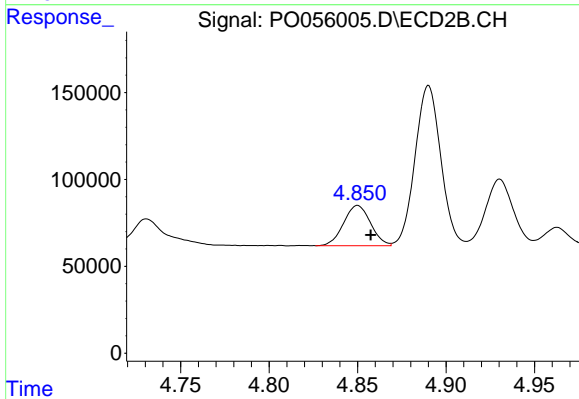
#12 AR-1232-2

R.T.: 4.676 min
 Delta R.T.: -0.008 min
 Response: 492586
 Conc: 562.02 ng/ml



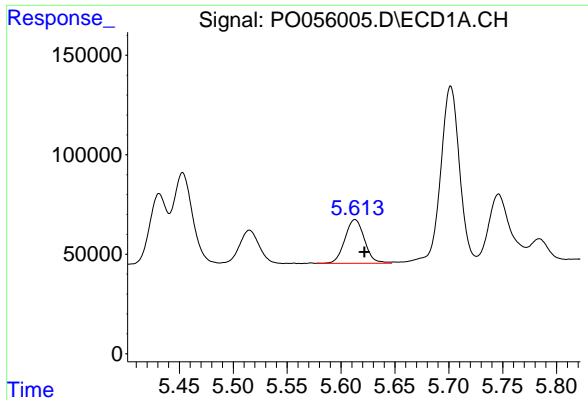
#13 AR-1232-3

R.T.: 5.453 min
 Delta R.T.: -0.009 min
 Response: 567880
 Conc: 586.96 ng/ml



#13 AR-1232-3

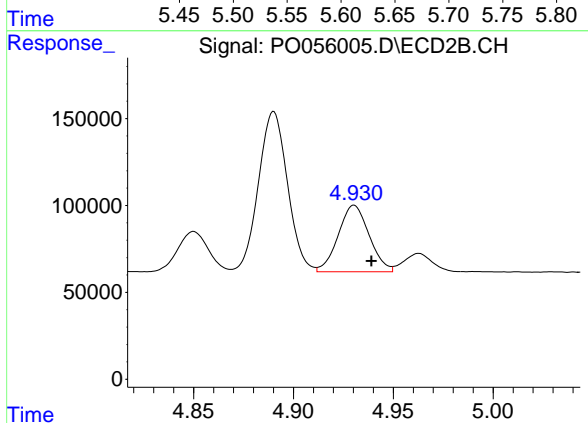
R.T.: 4.850 min
 Delta R.T.: -0.007 min
 Response: 246031
 Conc: 512.92 ng/ml



#14 AR-1232-4

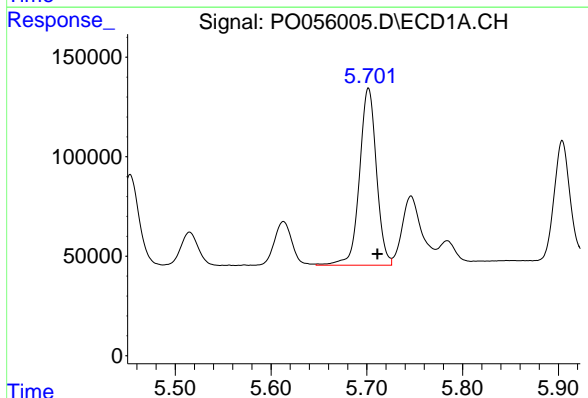
R.T.: 5.613 min
 Delta R.T.: -0.009 min
 Response: 279954
 Conc: 550.51 ng/ml

Instrument :
 ECD_O
 ClientSampleId :
 RI2-2(18-24)DL



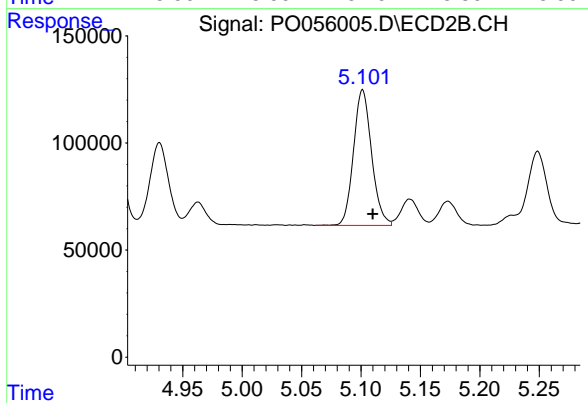
#14 AR-1232-4

R.T.: 4.930 min
 Delta R.T.: -0.009 min
 Response: 412584
 Conc: 971.33 ng/ml



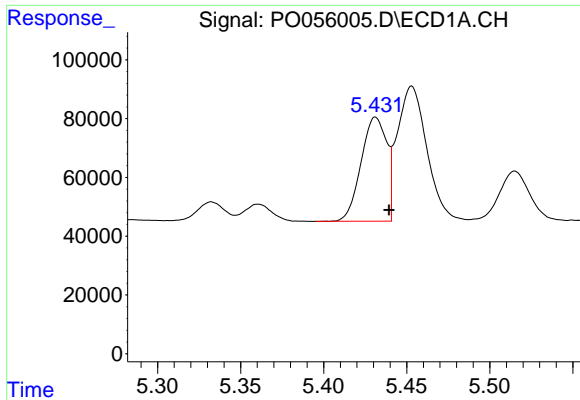
#15 AR-1232-5

R.T.: 5.702 min
 Delta R.T.: -0.009 min
 Response: 1091401
 Conc: 2513.74 ng/ml



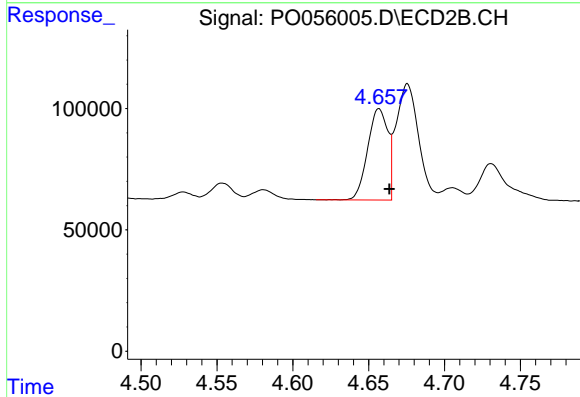
#15 AR-1232-5

R.T.: 5.101 min
 Delta R.T.: -0.008 min
 Response: 670469
 Conc: 1383.53 ng/ml

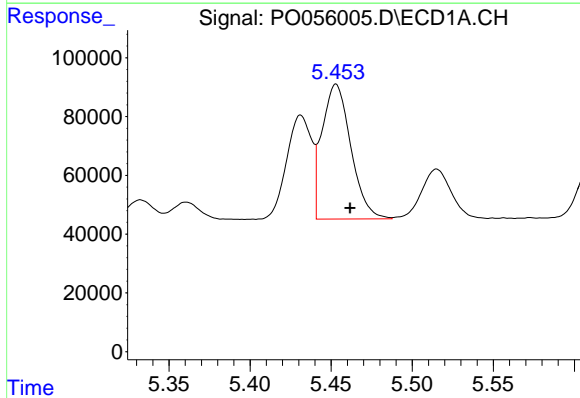


#16 AR-1242-1
 R.T.: 5.431 min
 Delta R.T.: -0.008 min
 Response: 379983
 Conc: 313.83 ng/ml

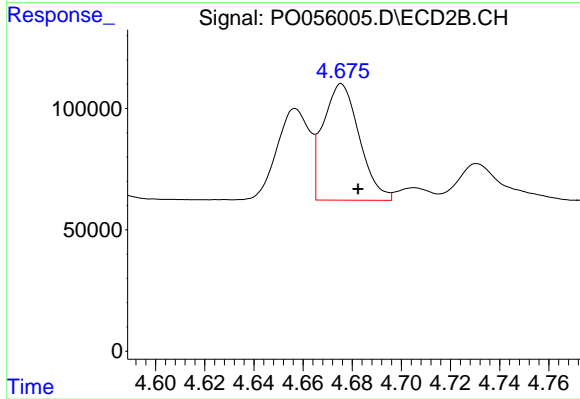
Instrument :
 ECD_O
 ClientSampled :
 RI2-2(18-24)DL



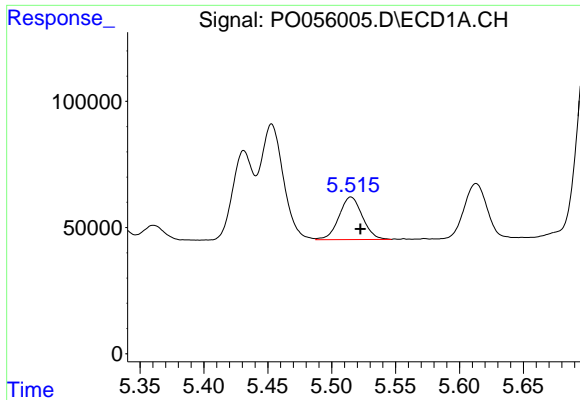
#16 AR-1242-1
 R.T.: 4.657 min
 Delta R.T.: -0.007 min
 Response: 348016
 Conc: 310.56 ng/ml



#17 AR-1242-2
 R.T.: 5.453 min
 Delta R.T.: -0.009 min
 Response: 567880
 Conc: 336.34 ng/ml



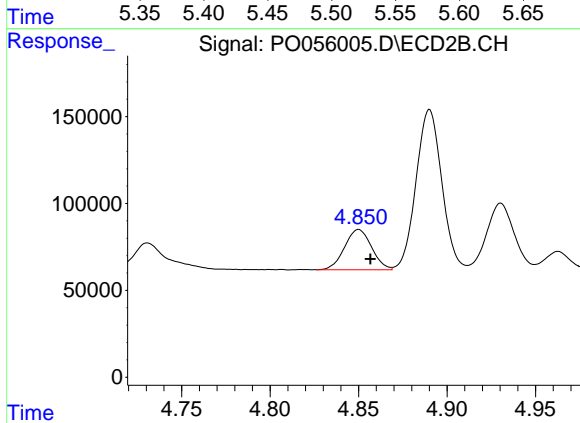
#17 AR-1242-2
 R.T.: 4.676 min
 Delta R.T.: -0.007 min
 Response: 492586
 Conc: 323.76 ng/ml



#18 AR-1242-3

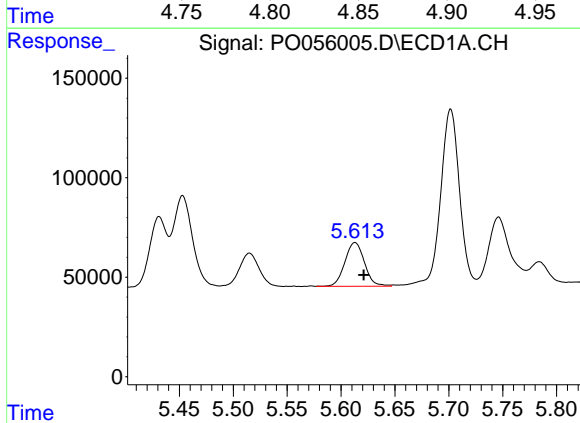
R.T.: 5.515 min
 Delta R.T.: -0.007 min
 Response: 214063
 Conc: 195.40 ng/ml

Instrument :
 ECD_O
 ClientSampled :
 RI2-2(18-24)DL



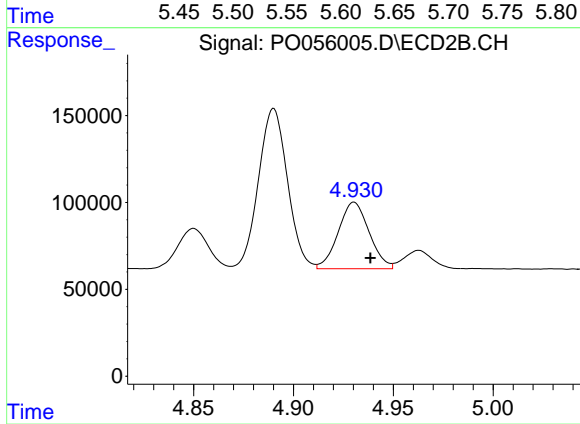
#18 AR-1242-3

R.T.: 4.850 min
 Delta R.T.: -0.007 min
 Response: 246031
 Conc: 284.10 ng/ml



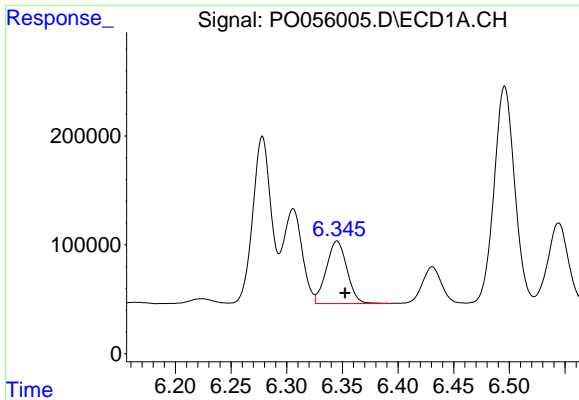
#19 AR-1242-4

R.T.: 5.613 min
 Delta R.T.: -0.008 min
 Response: 279954
 Conc: 311.12 ng/ml



#19 AR-1242-4

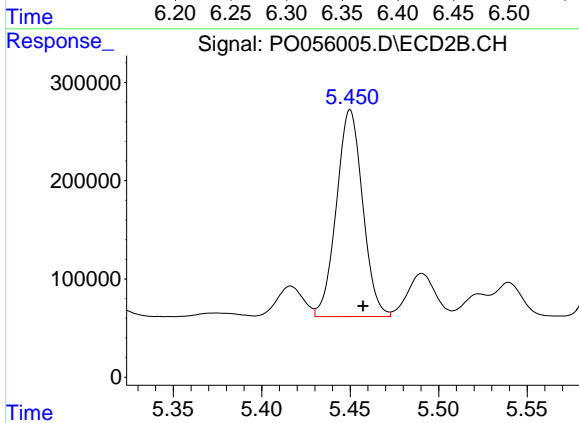
R.T.: 4.930 min
 Delta R.T.: -0.008 min
 Response: 412584
 Conc: 492.52 ng/ml



#20 AR-1242-5

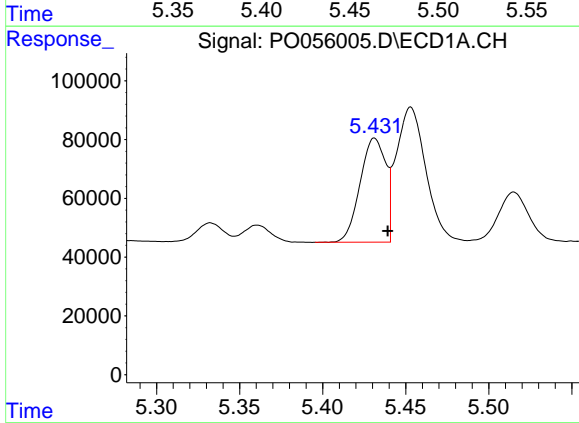
R.T.: 6.345 min
 Delta R.T.: -0.007 min
 Response: 744329
 Conc: 680.39 ng/ml

Instrument :
 ECD_O
 ClientSampled :
 RI2-2(18-24)DL



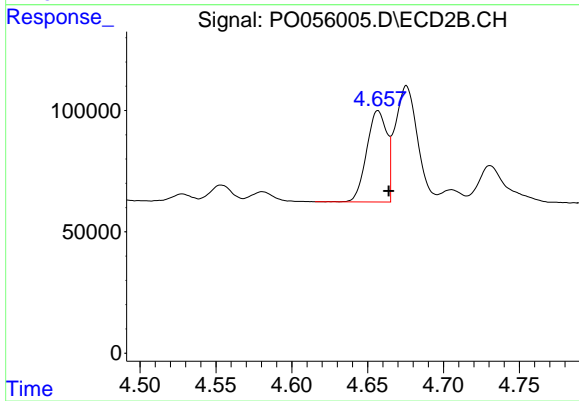
#20 AR-1242-5

R.T.: 5.450 min
 Delta R.T.: -0.007 min
 Response: 2172914
 Conc: 1810.16 ng/ml



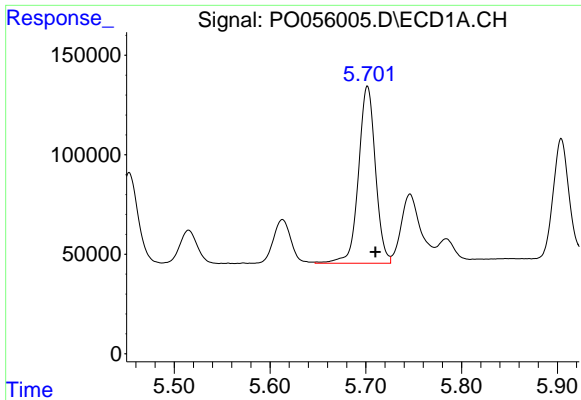
#21 AR-1248-1

R.T.: 5.431 min
 Delta R.T.: -0.008 min
 Response: 379983
 Conc: 419.82 ng/ml



#21 AR-1248-1

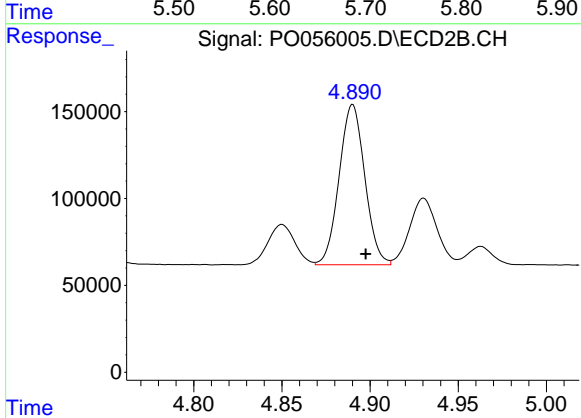
R.T.: 4.657 min
 Delta R.T.: -0.007 min
 Response: 348016
 Conc: 415.03 ng/ml



#22 AR-1248-2

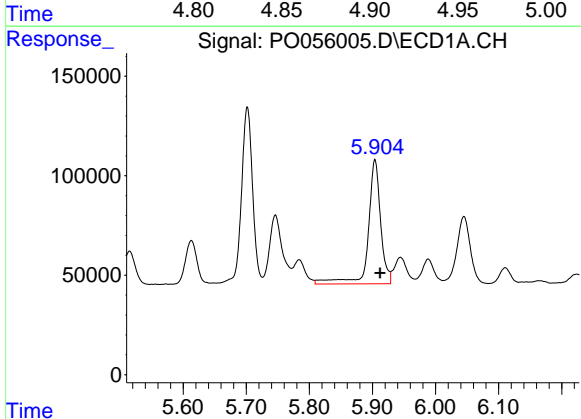
R.T.: 5.702 min
Delta R.T.: -0.008 min
Response: 1091401
Conc: 818.38 ng/ml

Instrument :
ECD_O
ClientSampled :
RI2-2(18-24)DL



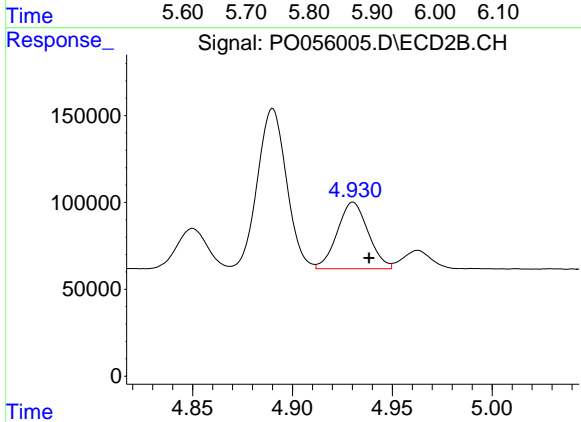
#22 AR-1248-2

R.T.: 4.890 min
Delta R.T.: -0.007 min
Response: 934382
Conc: 850.39 ng/ml



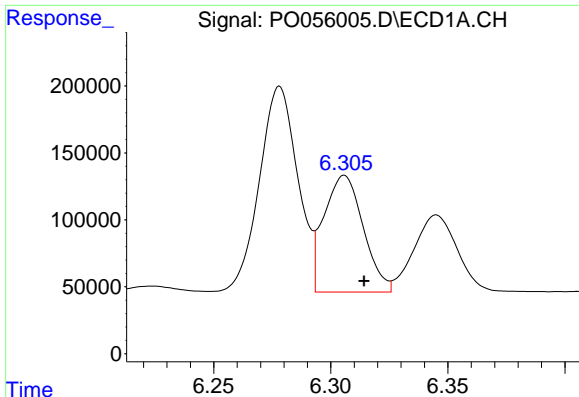
#23 AR-1248-3

R.T.: 5.904 min
Delta R.T.: -0.008 min
Response: 853071
Conc: 577.68 ng/ml



#23 AR-1248-3

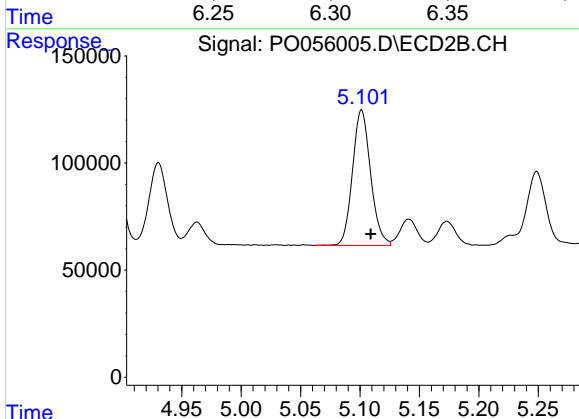
R.T.: 4.930 min
Delta R.T.: -0.008 min
Response: 412584
Conc: 363.46 ng/ml



#24 AR-1248-4

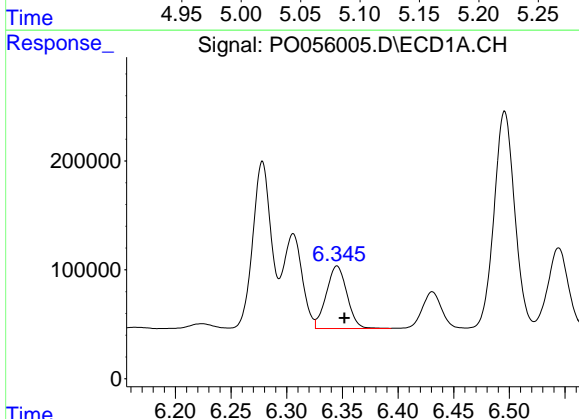
R.T.: 6.306 min
 Delta R.T.: -0.008 min
 Response: 1018506
 Conc: 584.09 ng/ml

Instrument :
 ECD_O
 ClientSampleId :
 RI2-2(18-24)DL



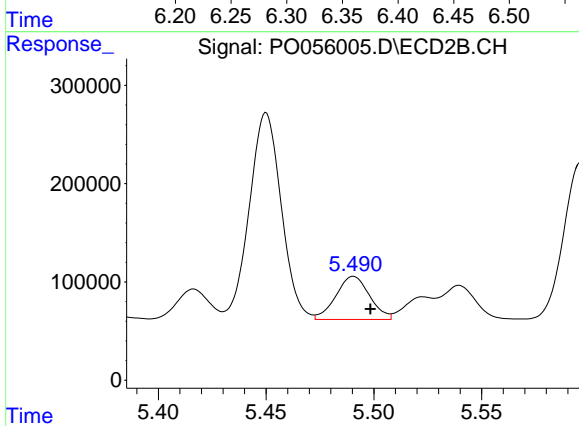
#24 AR-1248-4

R.T.: 5.101 min
 Delta R.T.: -0.008 min
 Response: 670469
 Conc: 477.48 ng/ml



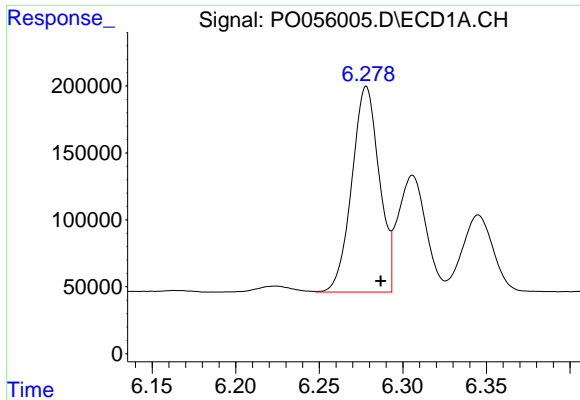
#25 AR-1248-5

R.T.: 6.345 min
 Delta R.T.: -0.007 min
 Response: 744329
 Conc: 445.62 ng/ml



#25 AR-1248-5

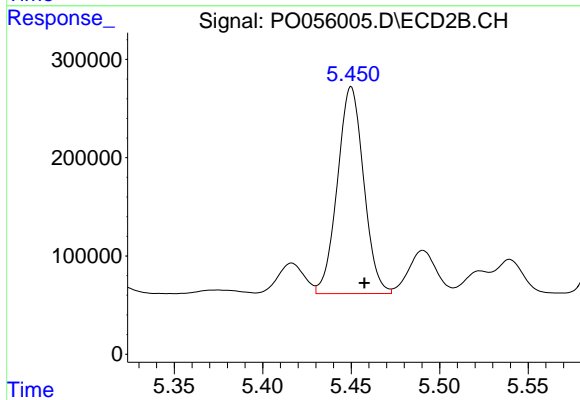
R.T.: 5.491 min
 Delta R.T.: -0.008 min
 Response: 478648
 Conc: 319.59 ng/ml



#26 AR-1254-1

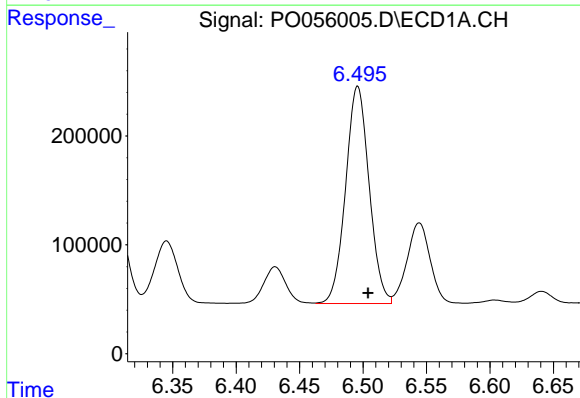
R.T.: 6.278 min
 Delta R.T.: -0.009 min
 Response: 1754280
 Conc: 835.44 ng/ml

Instrument :
 ECD_O
 ClientSampleId :
 RI2-2(18-24)DL



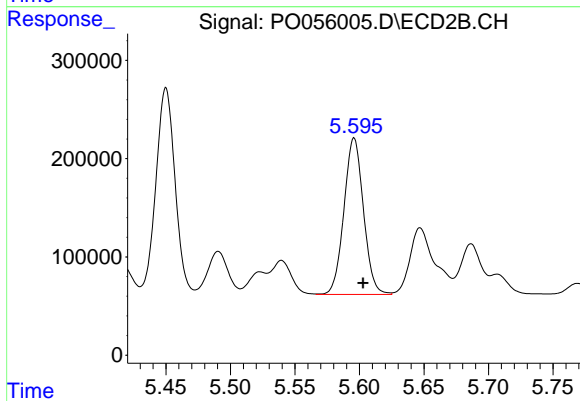
#26 AR-1254-1

R.T.: 5.450 min
 Delta R.T.: -0.007 min
 Response: 2172914
 Conc: 811.90 ng/ml



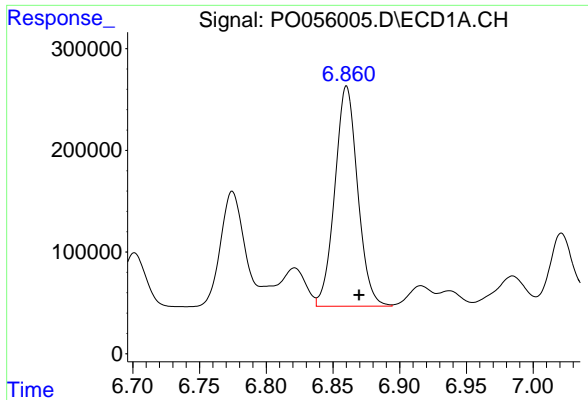
#27 AR-1254-2

R.T.: 6.496 min
 Delta R.T.: -0.008 min
 Response: 2571499
 Conc: 774.82 ng/ml



#27 AR-1254-2

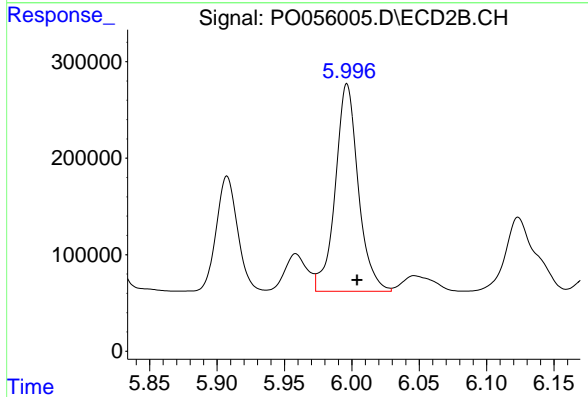
R.T.: 5.596 min
 Delta R.T.: -0.007 min
 Response: 1674960
 Conc: 685.70 ng/ml



#28 AR-1254-3

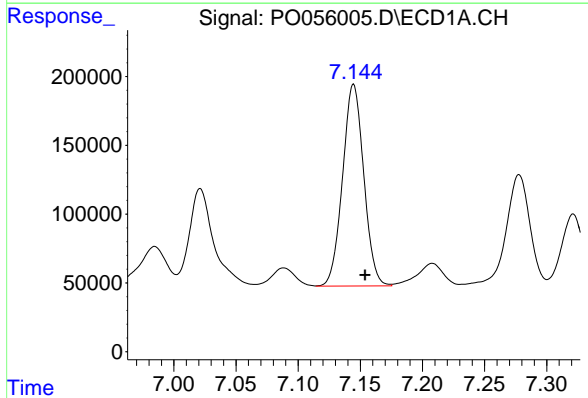
R.T.: 6.860 min
 Delta R.T.: -0.009 min
 Response: 2580285
 Conc: 709.74 ng/ml

Instrument :
 ECD_O
 ClientSampled :
 RI2-2(18-24)DL



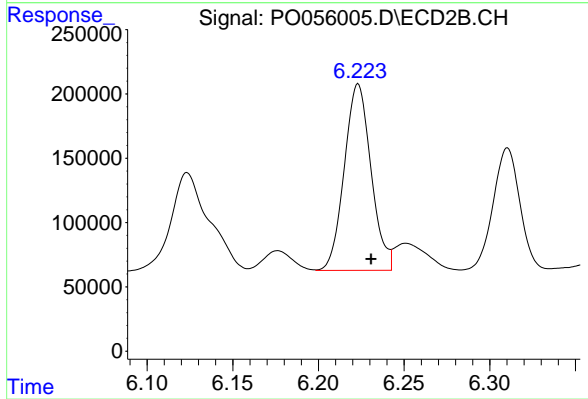
#28 AR-1254-3

R.T.: 5.996 min
 Delta R.T.: -0.007 min
 Response: 2556472
 Conc: 644.34 ng/ml



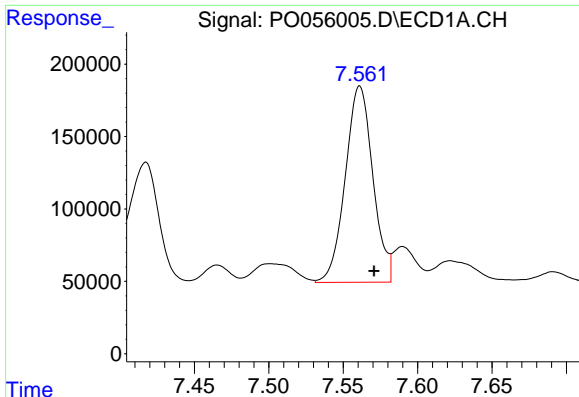
#29 AR-1254-4

R.T.: 7.145 min
 Delta R.T.: -0.009 min
 Response: 1737549
 Conc: 638.64 ng/ml



#29 AR-1254-4

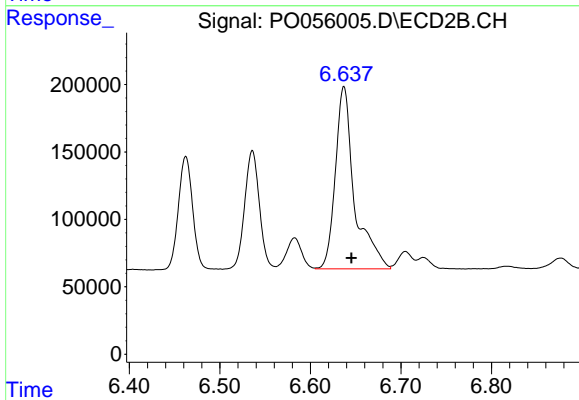
R.T.: 6.223 min
 Delta R.T.: -0.007 min
 Response: 1573496
 Conc: 586.87 ng/ml



#30 AR-1254-5

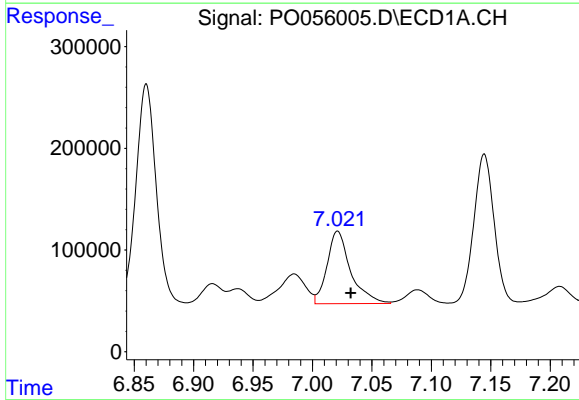
R.T.: 7.561 min
 Delta R.T.: -0.010 min
 Response: 1748616
 Conc: 610.10 ng/ml

Instrument :
 ECD_O
 ClientSampleId :
 RI2-2(18-24)DL



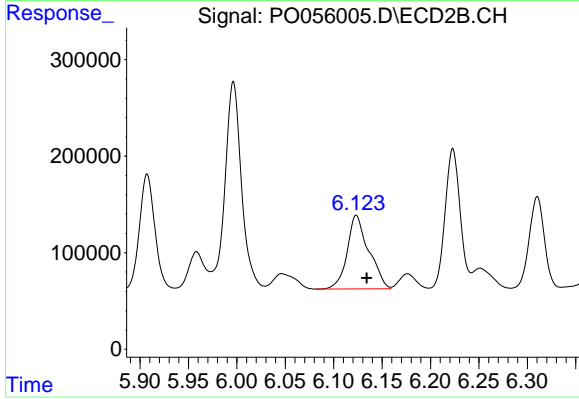
#30 AR-1254-5

R.T.: 6.637 min
 Delta R.T.: -0.008 min
 Response: 1990612
 Conc: 550.09 ng/ml



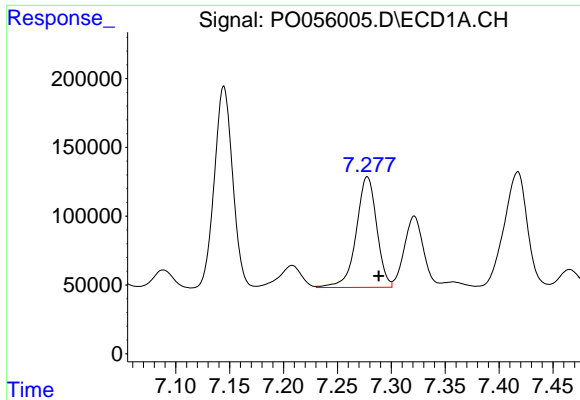
#31 AR-1260-1

R.T.: 7.021 min
 Delta R.T.: -0.011 min
 Response: 982919
 Conc: 455.16 ng/ml



#31 AR-1260-1

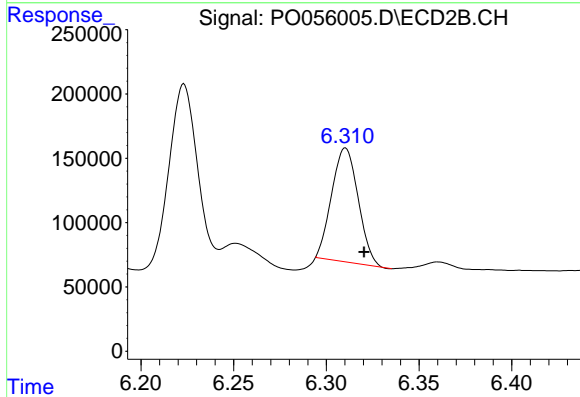
R.T.: 6.123 min
 Delta R.T.: -0.011 min
 Response: 1185158
 Conc: 537.93 ng/ml



#32 AR-1260-2

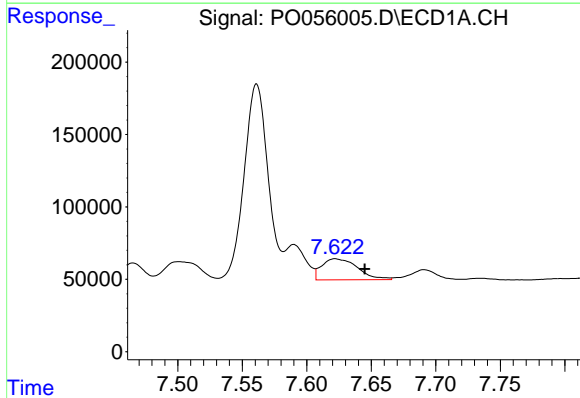
R.T.: 7.278 min
 Delta R.T.: -0.011 min
 Response: 1063016
 Conc: 405.90 ng/ml

Instrument :
 ECD_O
 ClientSampled :
 RI2-2(18-24)DL



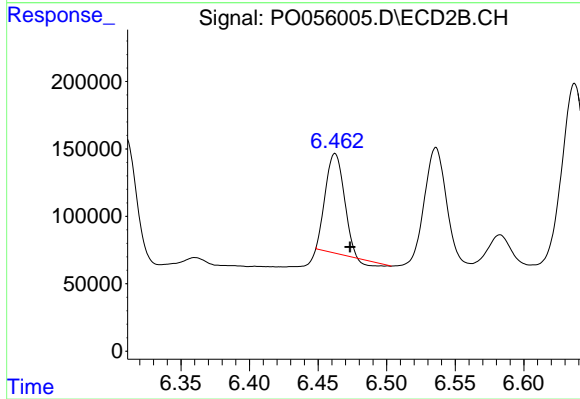
#32 AR-1260-2

R.T.: 6.310 min
 Delta R.T.: -0.010 min
 Response: 881899
 Conc: 288.81 ng/ml



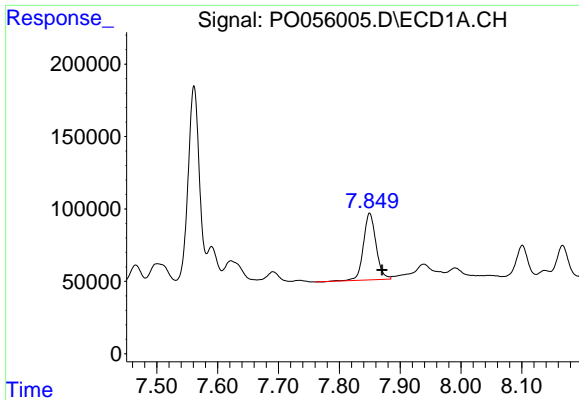
#33 AR-1260-3

R.T.: 7.622 min
 Delta R.T.: -0.023 min
 Response: 282427
 Conc: 141.21 ng/ml



#33 AR-1260-3

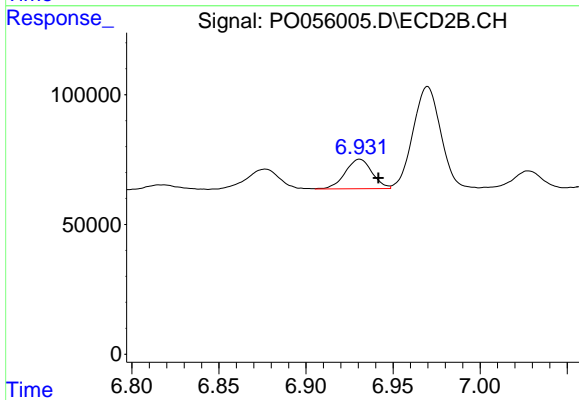
R.T.: 6.462 min
 Delta R.T.: -0.011 min
 Response: 673575
 Conc: 270.29 ng/ml



#34 AR-1260-4

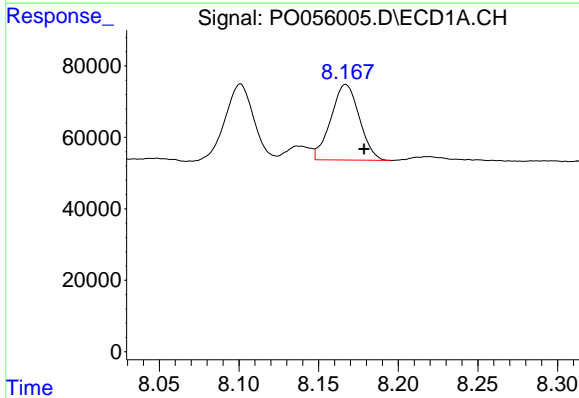
R.T.: 7.850 min
 Delta R.T.: -0.020 min
 Response: 664550
 Conc: 287.36 ng/ml

Instrument :
 ECD_O
 ClientSampleId :
 RI2-2(18-24)DL



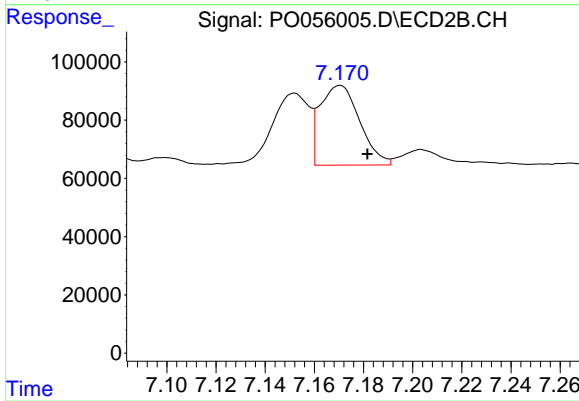
#34 AR-1260-4

R.T.: 6.931 min
 Delta R.T.: -0.011 min
 Response: 122356
 Conc: 59.30 ng/ml



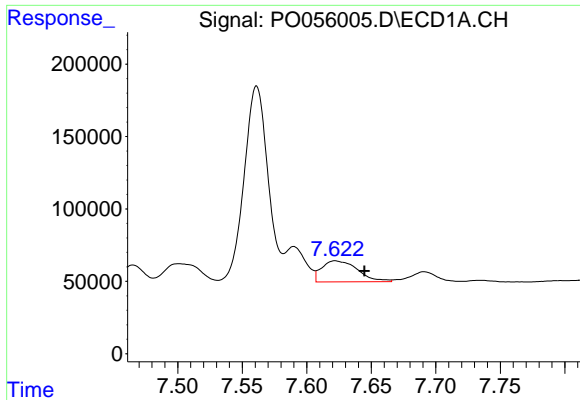
#35 AR-1260-5

R.T.: 8.167 min
 Delta R.T.: -0.011 min
 Response: 263654
 Conc: 62.15 ng/ml



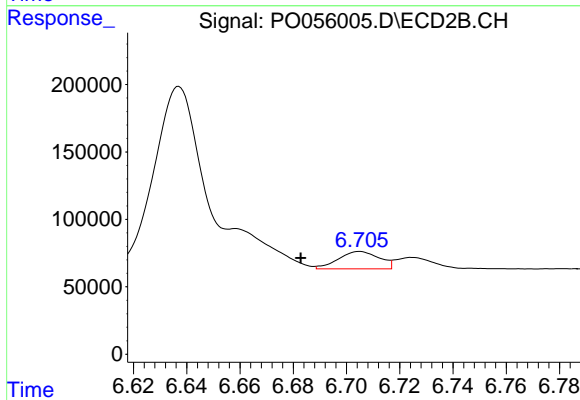
#35 AR-1260-5

R.T.: 7.170 min
 Delta R.T.: -0.011 min
 Response: 306391
 Conc: 61.01 ng/ml

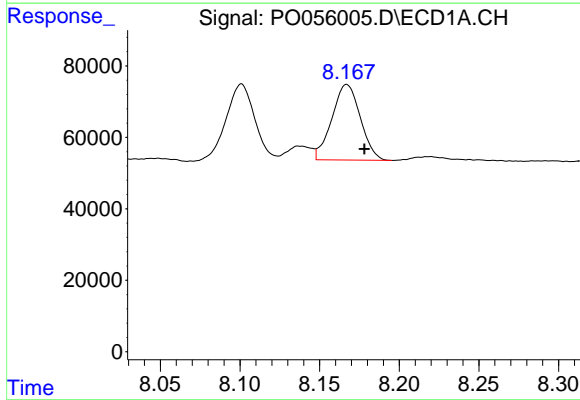


#36 AR-1262-1
 R.T.: 7.622 min
 Delta R.T.: -0.023 min
 Response: 282427
 Conc: 88.10 ng/ml

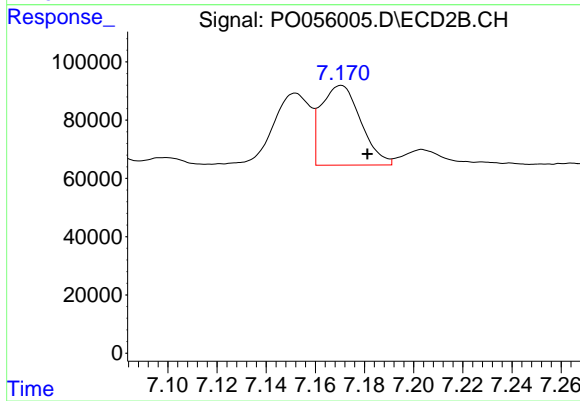
Instrument :
 ECD_O
 ClientSampled :
 RI2-2(18-24)DL



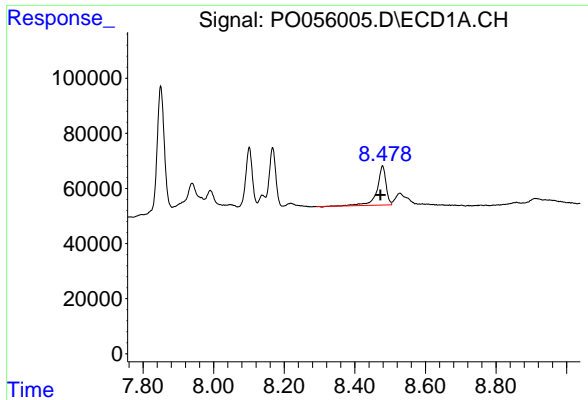
#36 AR-1262-1
 R.T.: 6.705 min
 Delta R.T.: 0.022 min
 Response: 138013
 Conc: 33.66 ng/ml



#37 AR-1262-2
 R.T.: 8.167 min
 Delta R.T.: -0.011 min
 Response: 263654
 Conc: 49.11 ng/ml

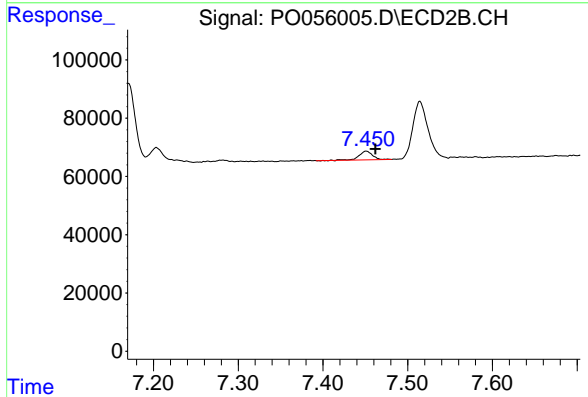


#37 AR-1262-2
 R.T.: 7.170 min
 Delta R.T.: -0.011 min
 Response: 306391
 Conc: 49.00 ng/ml

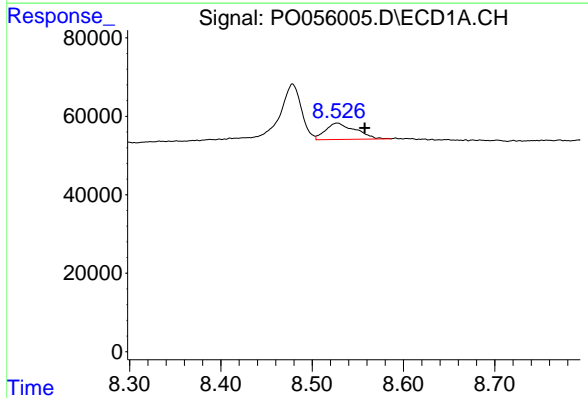


#38 AR-1262-3
 R.T.: 8.479 min
 Delta R.T.: 0.006 min
 Response: 251968
 Conc: 69.43 ng/ml

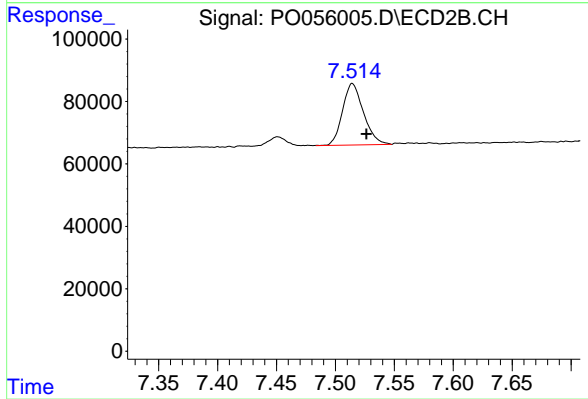
Instrument :
 ECD_O
 ClientSampleId :
 RI2-2(18-24)DL



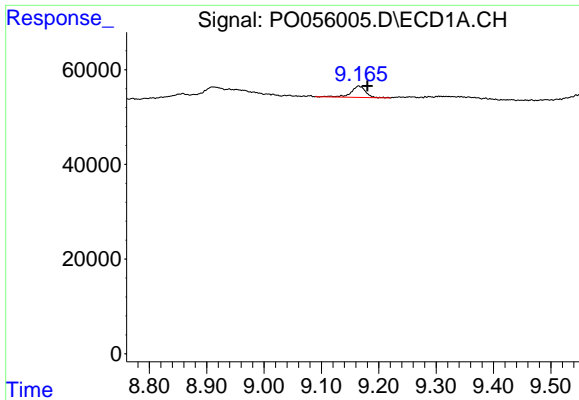
#38 AR-1262-3
 R.T.: 7.451 min
 Delta R.T.: -0.011 min
 Response: 32490
 Conc: 13.19 ng/ml



#39 AR-1262-4
 R.T.: 8.528 min
 Delta R.T.: -0.030 min
 Response: 94803
 Conc: 34.92 ng/ml

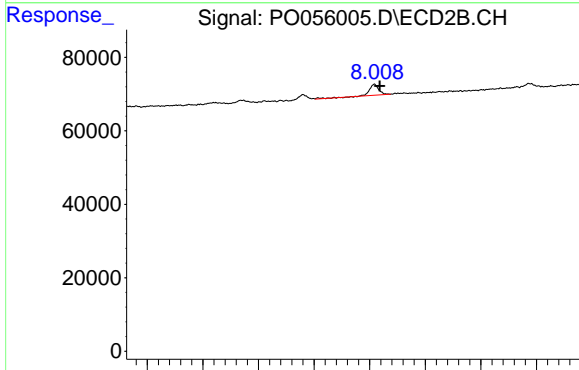


#39 AR-1262-4
 R.T.: 7.514 min
 Delta R.T.: -0.012 min
 Response: 244265
 Conc: 59.65 ng/ml

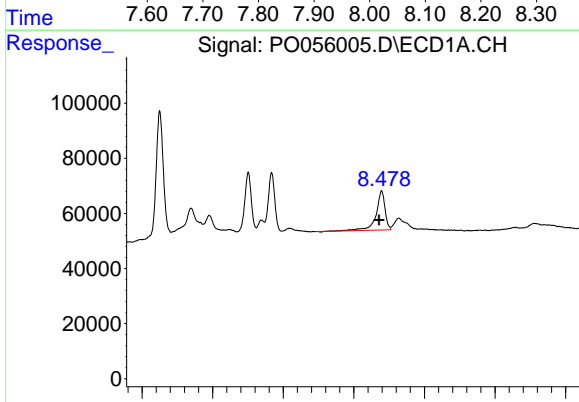


#40 AR-1262-5
 R.T.: 9.165 min
 Delta R.T.: -0.015 min
 Response: 42252
 Conc: 23.39 ng/ml

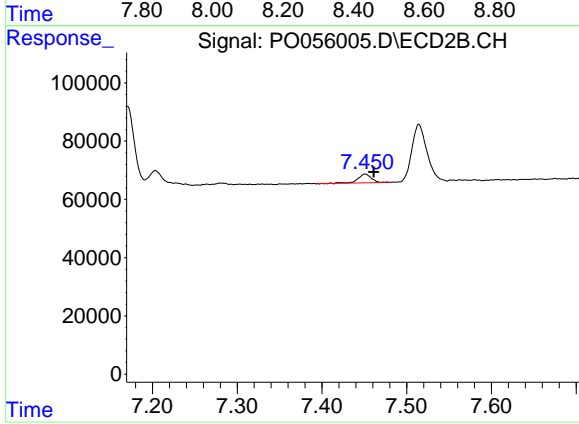
Instrument :
 ECD_O
 ClientSampleId :
 RI2-2(18-24)DL



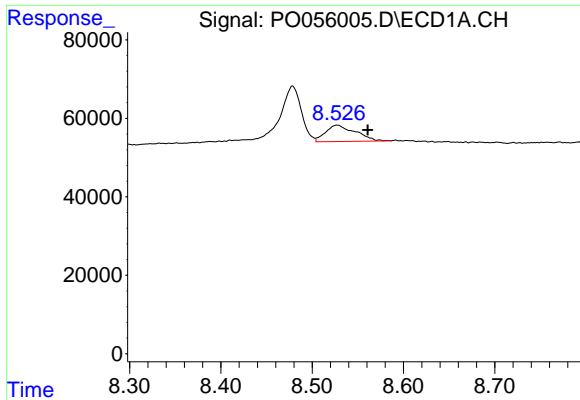
#40 AR-1262-5
 R.T.: 8.009 min
 Delta R.T.: -0.009 min
 Response: 35236
 Conc: 20.68 ng/ml



#41 AR-1268-1
 R.T.: 8.479 min
 Delta R.T.: 0.007 min
 Response: 251968
 Conc: 41.72 ng/ml



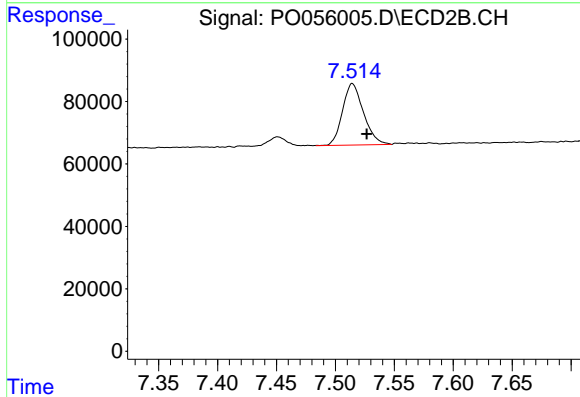
#41 AR-1268-1
 R.T.: 7.451 min
 Delta R.T.: -0.010 min
 Response: 32490
 Conc: 4.69 ng/ml



#42 AR-1268-2

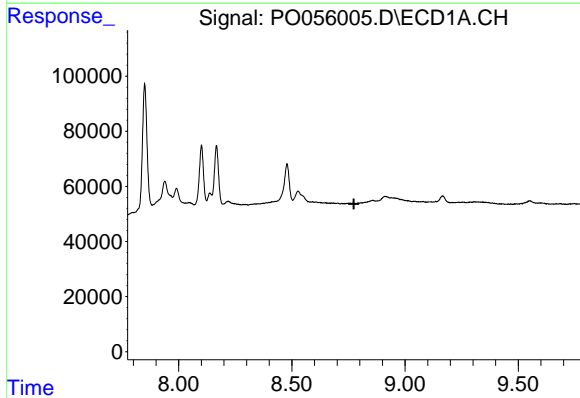
R.T.: 8.528 min
 Delta R.T.: -0.033 min
 Response: 94803
 Conc: 17.32 ng/ml

Instrument :
 ECD_O
 ClientSampleId :
 RI2-2(18-24)DL



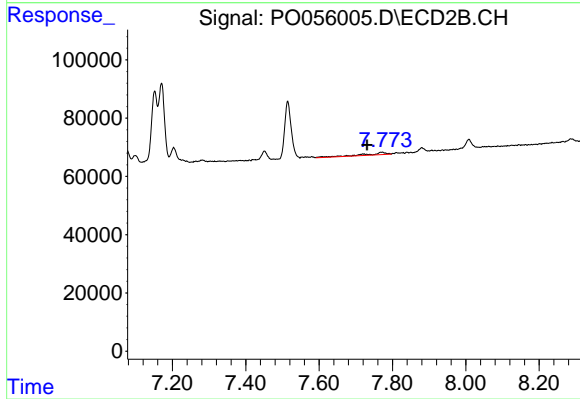
#42 AR-1268-2

R.T.: 7.514 min
 Delta R.T.: -0.012 min
 Response: 244265
 Conc: 42.94 ng/ml



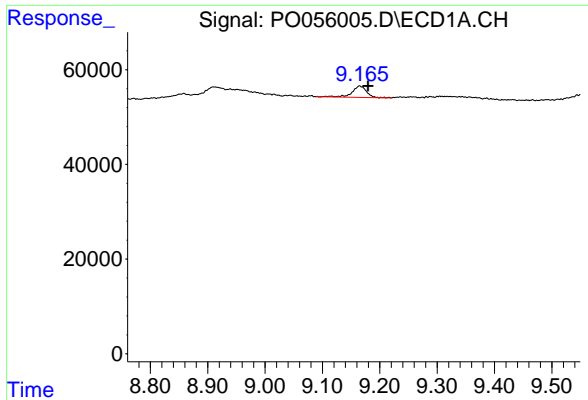
#43 AR-1268-3

R.T.: 0.000 min
 Exp R.T. : 8.774 min
 Response: 0
 Conc: N.D.



#43 AR-1268-3

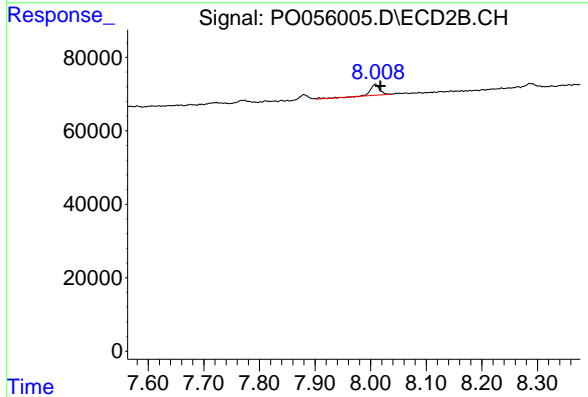
R.T.: 7.773 min
 Delta R.T.: 0.042 min
 Response: 30192
 Conc: 6.39 ng/ml



#44 AR-1268-4

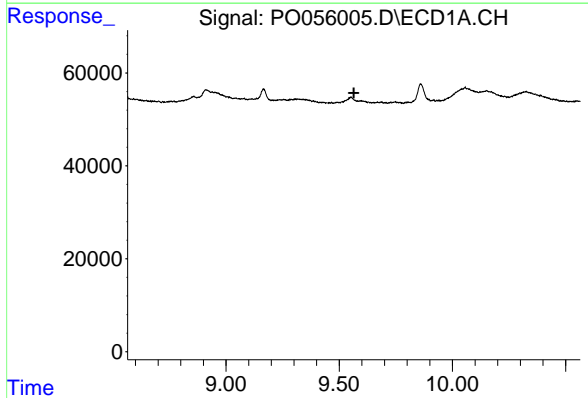
R.T.: 9.165 min
 Delta R.T.: -0.015 min
 Response: 42252
 Conc: 21.53 ng/ml

Instrument :
 ECD_O
 ClientSampleId :
 RI2-2(18-24)DL



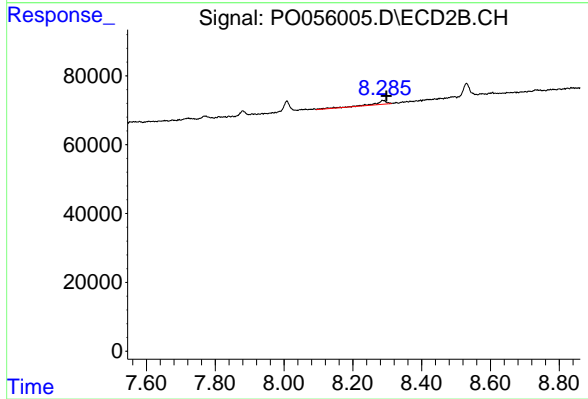
#44 AR-1268-4

R.T.: 8.009 min
 Delta R.T.: -0.009 min
 Response: 35236
 Conc: 18.63 ng/ml



#45 AR-1268-5

R.T.: 0.000 min
 Exp R.T. : 9.565 min
 Response: 0
 Conc: N.D.



#45 AR-1268-5

R.T.: 8.286 min
 Delta R.T.: -0.012 min
 Response: 28627
 Conc: 2.35 ng/ml