

Data Path : Z:\pestpcbsrv\HPCHEM1\ECD_0\Data\P0050919\
 Data File : P0056014.D
 Signal(s) : Signal #1: ECD1A.CH Signal #2: ECD2B.CH
 Acq On : 09 May 2019 18:36
 Operator : SM/SJ
 Sample : K2626-12
 Misc :
 ALS Vial : 10 Sample Multiplier: 1

Instrument :
 ECD_0
 ClientSampleId :
 A0C2-04-F1(18-24)

Integration File signal 1: autoint1.e
 Integration File signal 2: autoint2.e
 Quant Time: May 10 05:05:53 2019
 Quant Method : Z:\pestpcbsrv\HPCHEM1\ECD_0\methods\P0050319.M
 Quant Title : GC EXTRACTABLES
 QLast Update : Fri May 03 15:20:04 2019
 Response via : Initial Calibration
 Integrator: ChemStation 6890 Scale Mode: Small noise peaks clipped

Volume Inj. : 2 µl
 Signal #1 Phase : ZB-MR1 Signal #2 Phase: ZB-MR2
 Signal #1 Info : 30Mx0.32mmx 0.50µ Signal #2 Info : 30M x 0.32mm x 0.25µm

Compound	RT#1	RT#2	Resp#1	Resp#2	ng/ml	ng/ml
System Monitoring Compounds						
1) SA Tetrachlo...	4.270	3.585	839590	831159	28.056	29.428
2) SA Decachlor...	9.858	8.529	1333200	406053	35.631	15.015 #
Target Compounds						
3) L1 AR-1016-1	5.430	4.655	153038	159068	107.688	118.362
4) L1 AR-1016-2	5.452	4.674	225177	209958	113.791	114.985
5) L1 AR-1016-3	5.513	4.848	128380	101531	100.161	101.315
6) L1 AR-1016-4	5.612	4.888	262272	602279	250.923	740.233 #
7) L1 AR-1016-5	5.903	5.100	593557	433909	526.894	394.155 #
9) L2 AR-1221-2	4.642	3.883	30944	17017	92.278	61.356 #
10) L2 AR-1221-3	4.642	3.954	30944	32597	30.772	36.688
11) L3 AR-1232-1	4.642	3.954	30944	32597	36.028	44.046
12) L3 AR-1232-2	5.165	4.674	148265	209958	305.629	239.555
13) L3 AR-1232-3	5.452	4.848	225177	101531	232.745	211.669
14) L3 AR-1232-4	5.612	4.929	262272	245111	515.735	577.052
15) L3 AR-1232-5	5.700	5.100	1064201	433909	2451.092	895.384 #
16) L4 AR-1242-1	5.430	4.655	153038	159068	126.394	141.946
17) L4 AR-1242-2	5.452	4.674	225177	209958	133.367	137.999
18) L4 AR-1242-3	5.513	4.848	128380	101531	117.184	117.239
19) L4 AR-1242-4	5.612	4.929	262272	245111	291.471	292.599
20) L4 AR-1242-5	6.344	5.448	580680	1668314	530.802	1389.804 #
21) L5 AR-1248-1	5.430	4.655	153038	159068	169.080	189.699
22) L5 AR-1248-2	5.700	4.888	1064201	602279	797.980	548.143 #
23) L5 AR-1248-3	5.903	4.929	593557	245111	401.940	215.929 #
24) L5 AR-1248-4	6.304	5.100	694999	433909	398.569	309.013
25) L5 AR-1248-5	6.344	5.489	580680	311319	347.644	207.863 #
26) L6 AR-1254-1	6.277	5.448	1445293	1668314	688.290	623.361
27) L6 AR-1254-2	6.495	5.594	2108613	1481330	635.349	606.432
28) L6 AR-1254-3	6.860	5.995	2545784	2426869	700.252	611.670
29) L6 AR-1254-4	7.144	6.222	1915161	1333032	703.924	497.183 #
30) L6 AR-1254-5	7.560	6.636	2263828	1714013	789.858	473.656 #
31) L7 AR-1260-1	7.021	6.122	1174586	1115935	543.917	506.509
32) L7 AR-1260-2	7.277	6.309	1194320	834778	456.041	273.377 #
33) L7 AR-1260-3	7.624	6.461	1989284	645125	994.648	258.875 #
34) L7 AR-1260-4	7.849	6.929	2865900	260128	1239.251	126.063 #
35) L7 AR-1260-5	8.166	7.170	982365	549759	231.563	109.464 #
36) L8 AR-1262-1	7.624	6.704	1989284	163194	620.518	39.796 #
37) L8 AR-1262-2	8.166	7.170	982365	549759	182.980	87.922 #
38) L8 AR-1262-3	8.477	7.451	711858	103324	196.166	41.951 #
39) L8 AR-1262-4	8.547	7.515	2092983	601860	770.870	146.976 #
40) L8 AR-1262-5	9.229	8.007	3905276	113069	2161.773	66.350 #
41) L9 AR-1268-1	8.477	7.451	711858	103324	117.880	14.912 #
42) L9 AR-1268-2	8.547	7.515	2092983	601860	382.370	105.791 #

Data Path : Z:\pestpcbsrv\HPCHEM1\ECD_0\Data\P0050919\
 Data File : P0056014.D
 Signal(s) : Signal #1: ECD1A.CH Signal #2: ECD2B.CH
 Acq On : 09 May 2019 18:36
 Operator : SM/SJ
 Sample : K2626-12
 Misc :
 ALS Vial : 10 Sample Multiplier: 1

Instrument :
 ECD_0
 ClientSampleId :
 A0C2-04-F1(18-24)

Integration File signal 1: autoint1.e
 Integration File signal 2: autoint2.e
 Quant Time: May 10 05:05:53 2019
 Quant Method : Z:\pestpcbsrv\HPCHEM1\ECD_0\methods\P0050319.M
 Quant Title : GC EXTRACTABLES
 QLast Update : Fri May 03 15:20:04 2019
 Response via : Initial Calibration
 Integrator: ChemStation 6890 Scale Mode: Small noise peaks clipped

Volume Inj. : 2 µl
 Signal #1 Phase : ZB-MR1 Signal #2 Phase: ZB-MR2
 Signal #1 Info : 30Mx0.32mmx 0.50µ Signal #2 Info : 30M x 0.32mm x 0.25µm

	Compound	RT#1	RT#2	Resp#1	Resp#2	ng/ml	ng/ml
43)	L9 AR-1268-3	8.769	7.718	1135502	64873	251.750	13.735 #
44)	L9 AR-1268-4	9.229	8.007	3905276	113069	1990.254	59.771 #
45)	L9 AR-1268-5	0.000	8.267	0	988063	N.D.	81.135 #

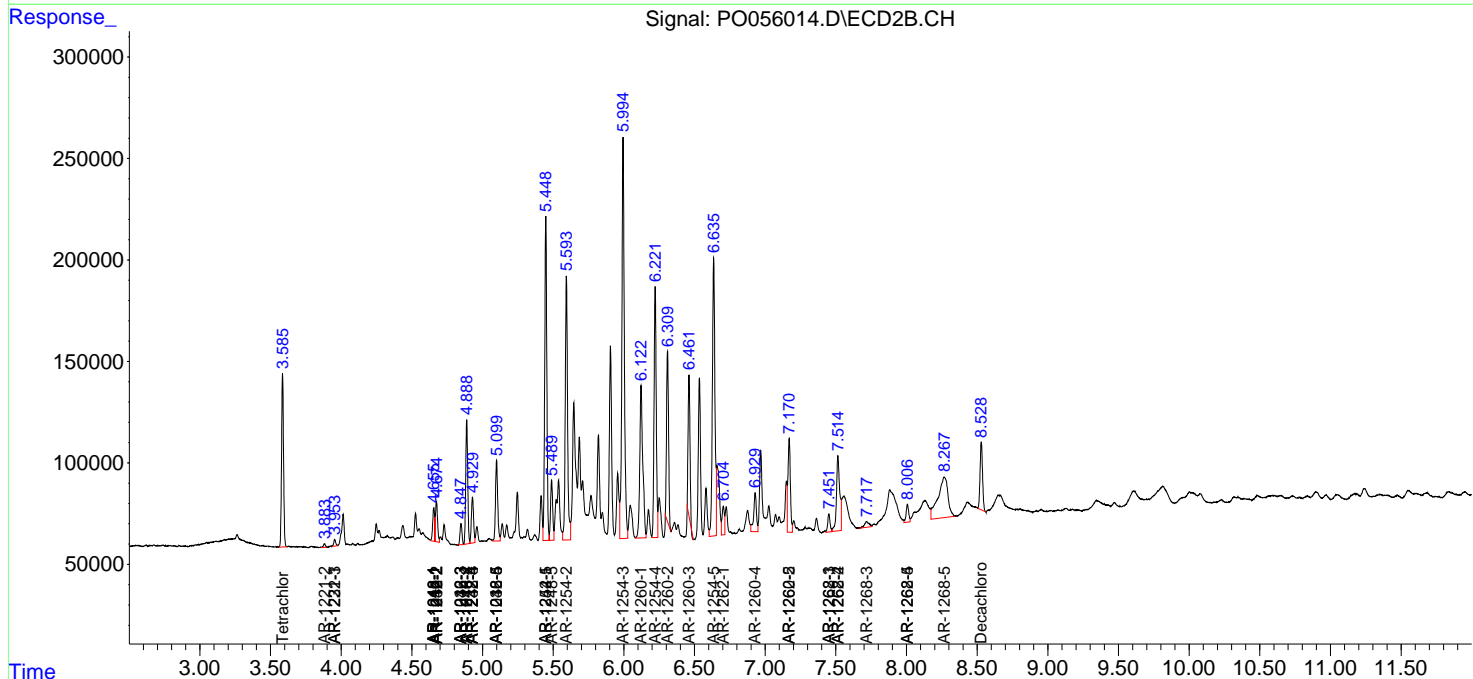
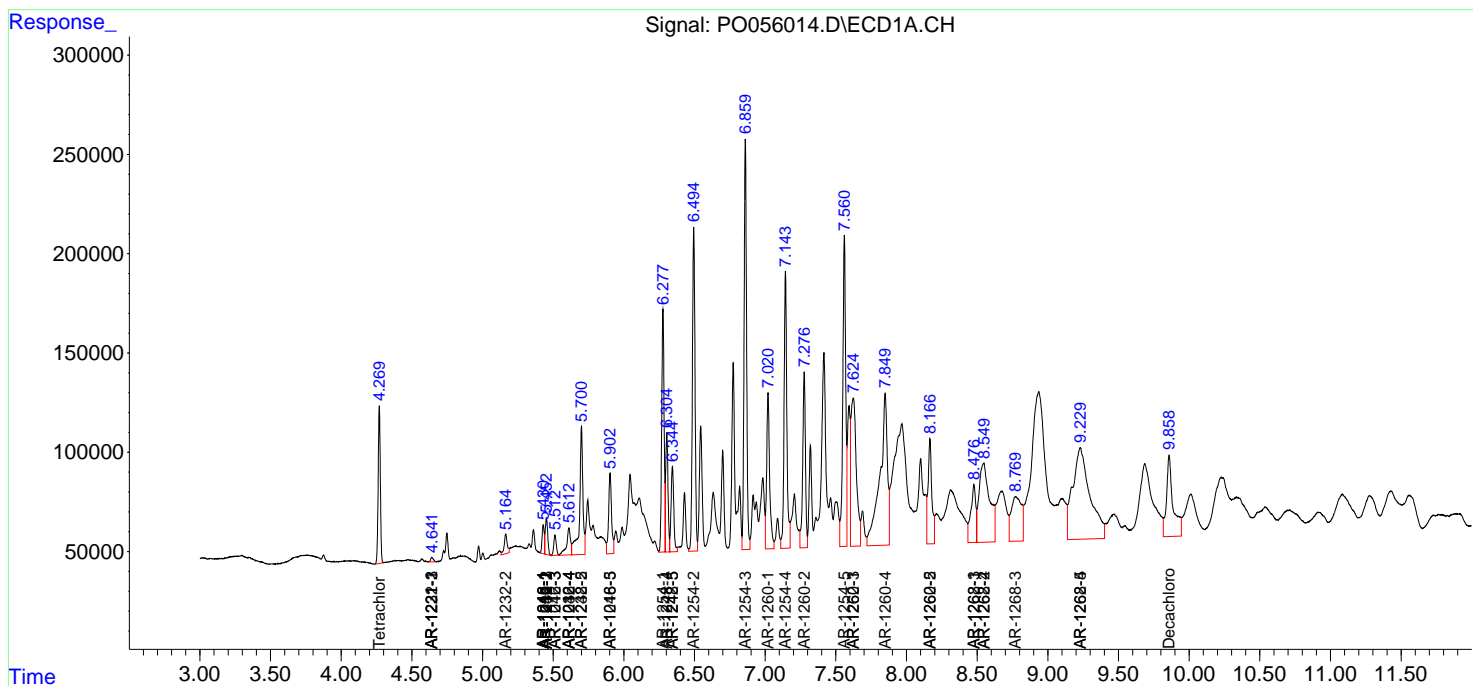
(f)=RT Delta > 1/2 Window (#)=Amounts differ by > 25% (m)=manual int.

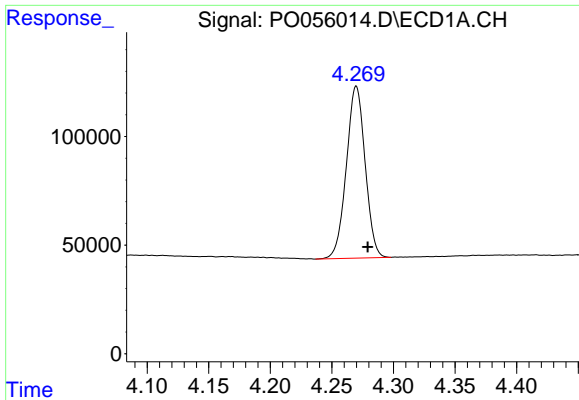
Data Path : Z:\pestpcbsrv\HPCHEM1\ECD_0\Data\P0050919\
 Data File : P0056014.D
 Signal(s) : Signal #1: ECD1A.CH Signal #2: ECD2B.CH
 Acq On : 09 May 2019 18:36
 Operator : SM/SJ
 Sample : K2626-12
 Misc :
 ALS Vial : 10 Sample Multiplier: 1

Instrument :
 ECD_O
 ClientSampled :
 A0C2-04-F1(18-24)

Integration File signal 1: autoint1.e
 Integration File signal 2: autoint2.e
 Quant Time: May 10 05:05:53 2019
 Quant Method : Z:\pestpcbsrv\HPCHEM1\ECD_0\methods\P0050319.M
 Quant Title : GC EXTRACTABLES
 QLast Update : Fri May 03 15:20:04 2019
 Response via : Initial Calibration
 Integrator: ChemStation 6890 Scale Mode: Small noise peaks clipped

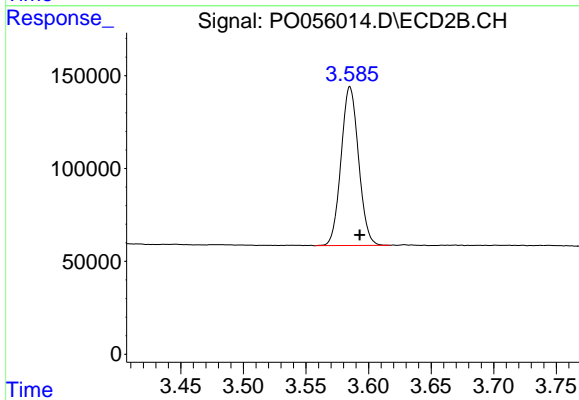
Volume Inj. : 2 µl
 Signal #1 Phase : ZB-MR1 Signal #2 Phase: ZB-MR2
 Signal #1 Info : 30Mx0.32mmx 0.50µ Signal #2 Info : 30M x 0.32mm x 0.25µm



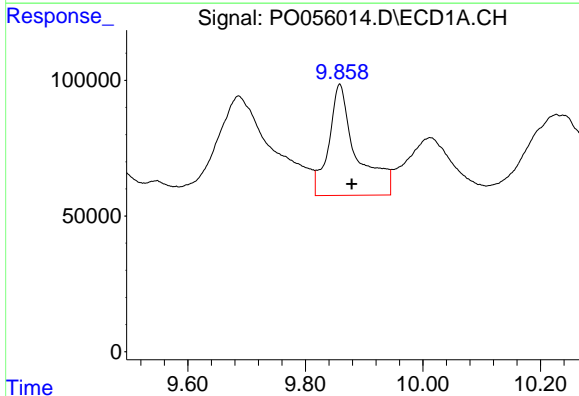


#1 Tetrachloro-m-xylene
 R.T.: 4.270 min
 Delta R.T.: -0.009 min
 Response: 839590
 Conc: 28.06 ng/ml

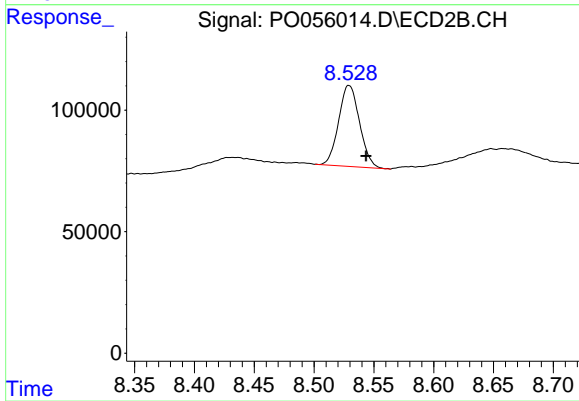
Instrument :
 ECD_O
 ClientSampleId :
 A0C2-04-F1(18-24)



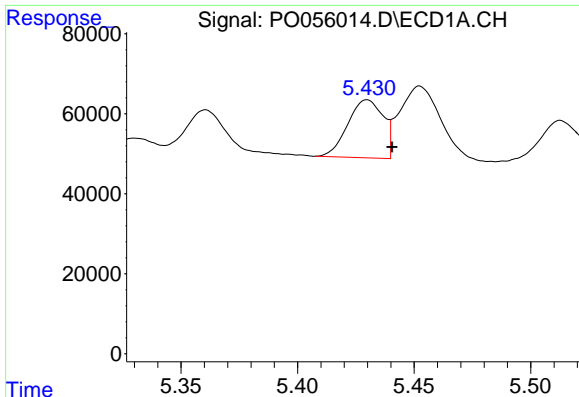
#1 Tetrachloro-m-xylene
 R.T.: 3.585 min
 Delta R.T.: -0.008 min
 Response: 831159
 Conc: 29.43 ng/ml



#2 Decachlorobiphenyl
 R.T.: 9.858 min
 Delta R.T.: -0.021 min
 Response: 1333200
 Conc: 35.63 ng/ml



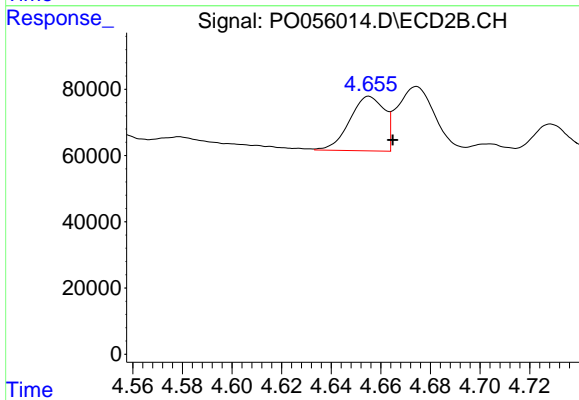
#2 Decachlorobiphenyl
 R.T.: 8.529 min
 Delta R.T.: -0.014 min
 Response: 406053
 Conc: 15.02 ng/ml



#3 AR-1016-1

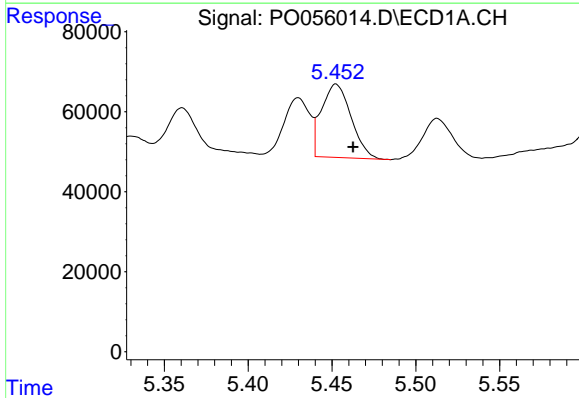
R.T.: 5.430 min
 Delta R.T.: -0.011 min
 Response: 153038
 Conc: 107.69 ng/ml

Instrument :
 ECD_O
 ClientSampleId :
 A0C2-04-F1(18-24)



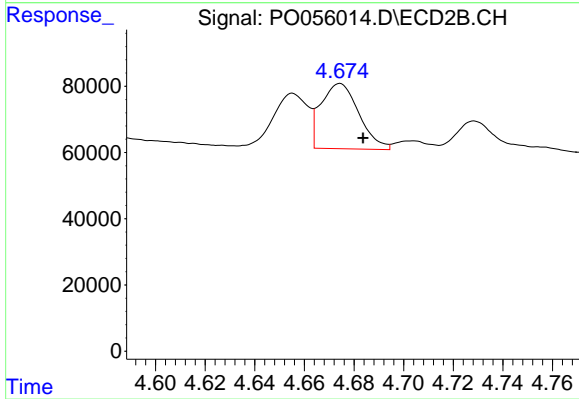
#3 AR-1016-1

R.T.: 4.655 min
 Delta R.T.: -0.010 min
 Response: 159068
 Conc: 118.36 ng/ml



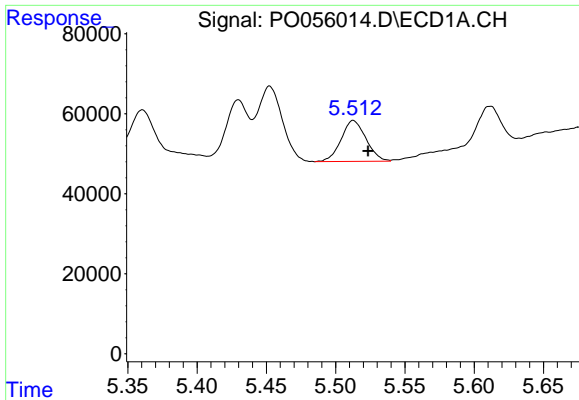
#4 AR-1016-2

R.T.: 5.452 min
 Delta R.T.: -0.010 min
 Response: 225177
 Conc: 113.79 ng/ml



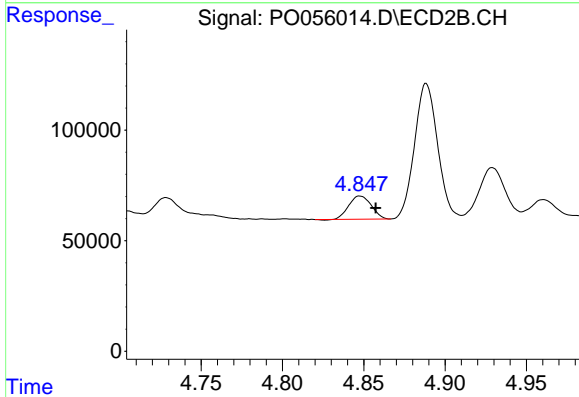
#4 AR-1016-2

R.T.: 4.674 min
 Delta R.T.: -0.009 min
 Response: 209958
 Conc: 114.99 ng/ml

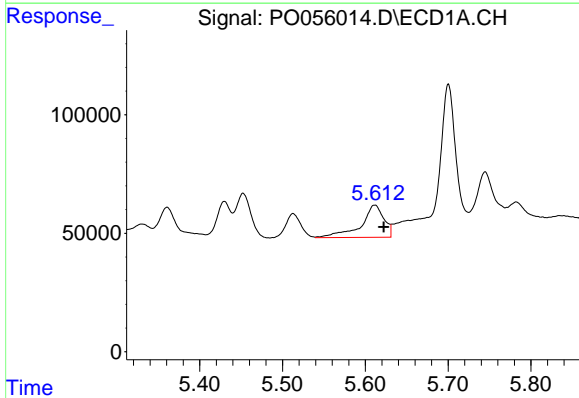


#5 AR-1016-3
 R.T.: 5.513 min
 Delta R.T.: -0.011 min
 Response: 128380
 Conc: 100.16 ng/ml

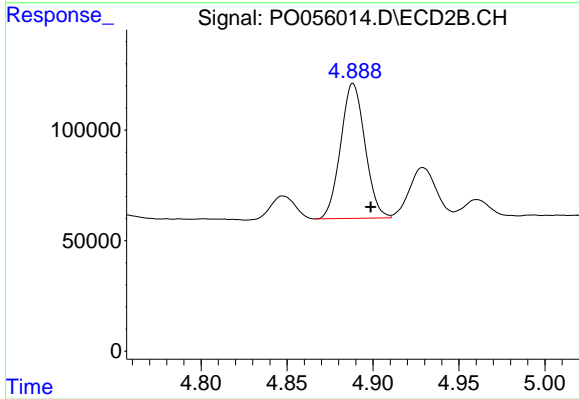
Instrument :
 ECD_O
ClientSampleId :
 A0C2-04-F1(18-24)



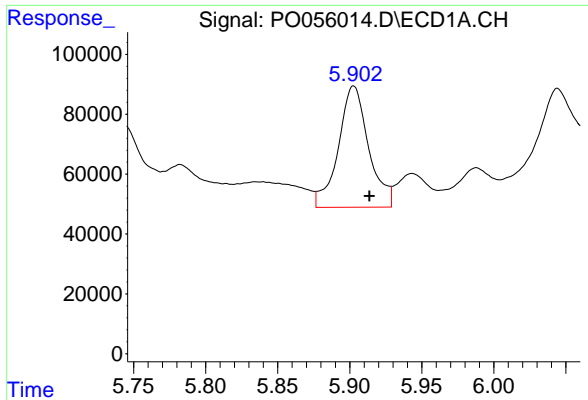
#5 AR-1016-3
 R.T.: 4.848 min
 Delta R.T.: -0.010 min
 Response: 101531
 Conc: 101.32 ng/ml



#6 AR-1016-4
 R.T.: 5.612 min
 Delta R.T.: -0.010 min
 Response: 262272
 Conc: 250.92 ng/ml



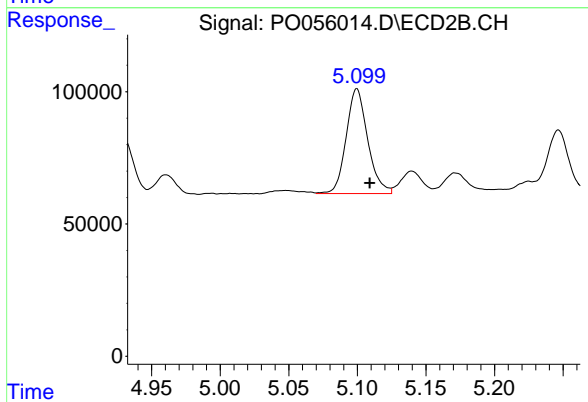
#6 AR-1016-4
 R.T.: 4.888 min
 Delta R.T.: -0.010 min
 Response: 602279
 Conc: 740.23 ng/ml



#7 AR-1016-5

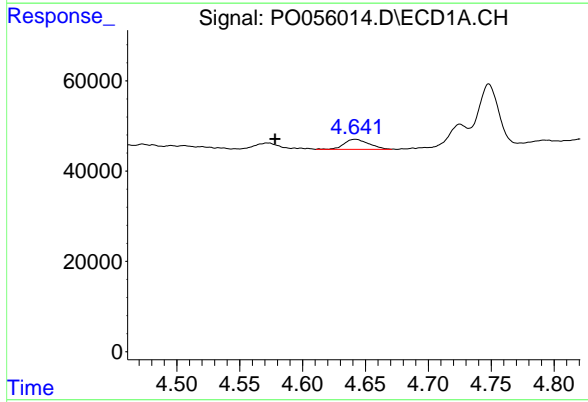
R.T.: 5.903 min
 Delta R.T.: -0.011 min
 Response: 593557
 Conc: 526.89 ng/ml

Instrument :
 ECD_O
 ClientSampleId :
 A0C2-04-F1(18-24)



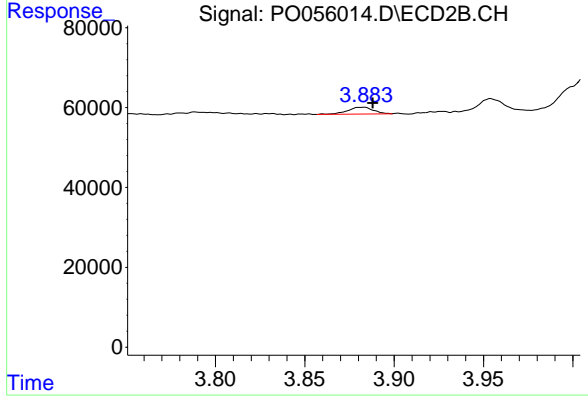
#7 AR-1016-5

R.T.: 5.100 min
 Delta R.T.: -0.009 min
 Response: 433909
 Conc: 394.15 ng/ml



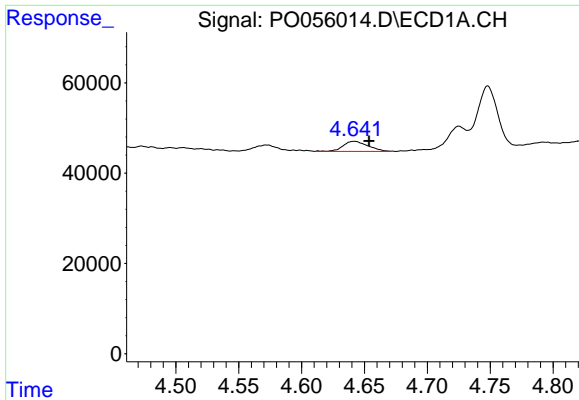
#9 AR-1221-2

R.T.: 4.642 min
 Delta R.T.: 0.064 min
 Response: 30944
 Conc: 92.28 ng/ml



#9 AR-1221-2

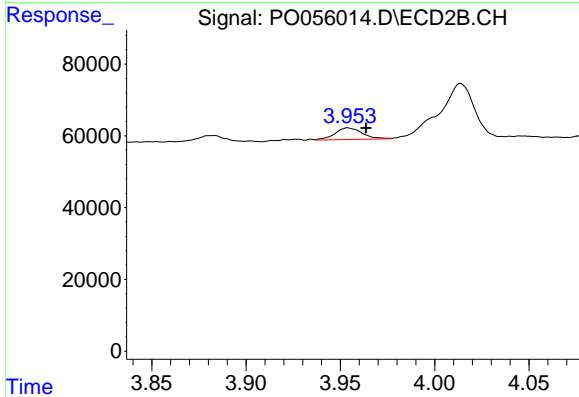
R.T.: 3.883 min
 Delta R.T.: -0.005 min
 Response: 17017
 Conc: 61.36 ng/ml



#10 AR-1221-3

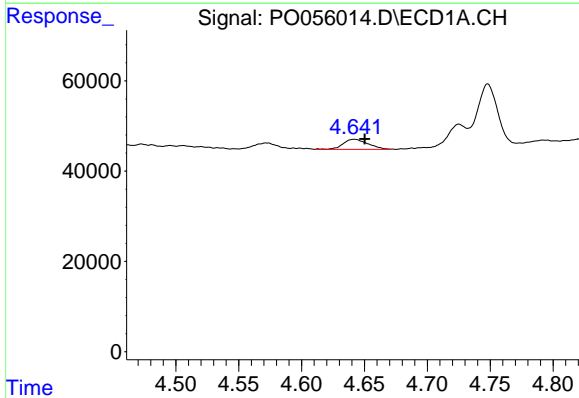
R.T.: 4.642 min
 Delta R.T.: -0.012 min
 Response: 30944
 Conc: 30.77 ng/ml

Instrument :
 ECD_O
 ClientSampleId :
 A0C2-04-F1(18-24)



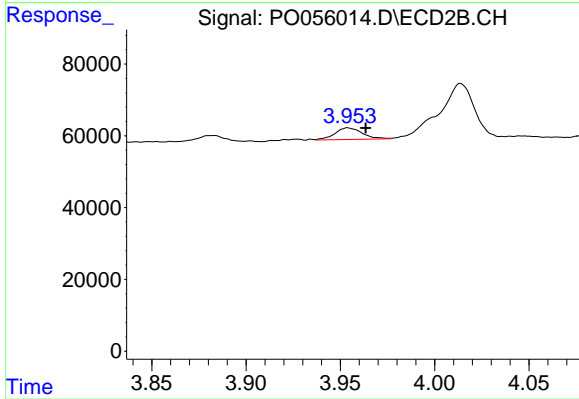
#10 AR-1221-3

R.T.: 3.954 min
 Delta R.T.: -0.010 min
 Response: 32597
 Conc: 36.69 ng/ml



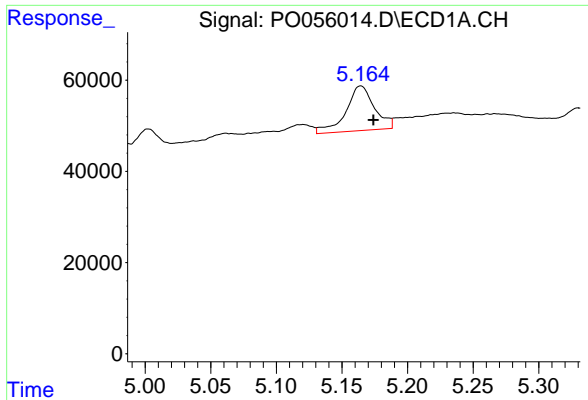
#11 AR-1232-1

R.T.: 4.642 min
 Delta R.T.: -0.008 min
 Response: 30944
 Conc: 36.03 ng/ml



#11 AR-1232-1

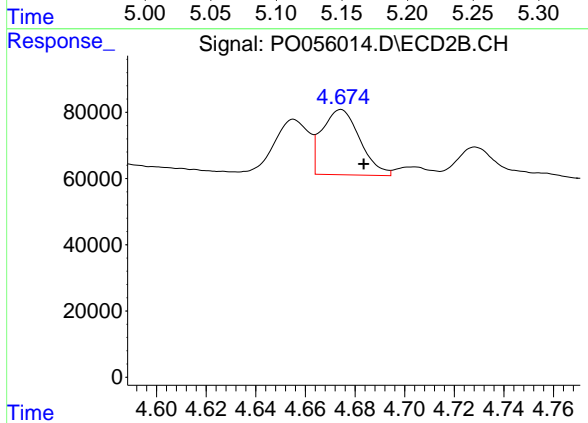
R.T.: 3.954 min
 Delta R.T.: -0.009 min
 Response: 32597
 Conc: 44.05 ng/ml



#12 AR-1232-2

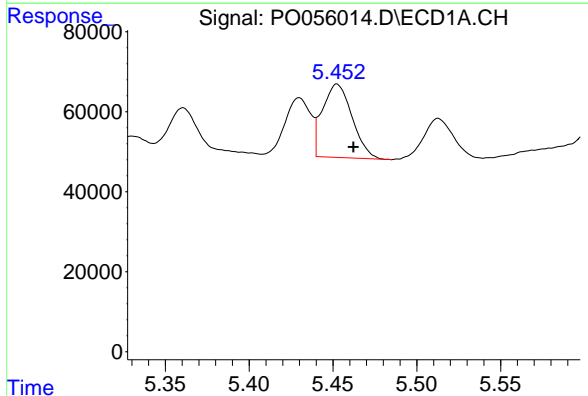
R.T.: 5.165 min
 Delta R.T.: -0.009 min
 Response: 148265
 Conc: 305.63 ng/ml

Instrument :
 ECD_O
 ClientSampleId :
 A0C2-04-F1(18-24)



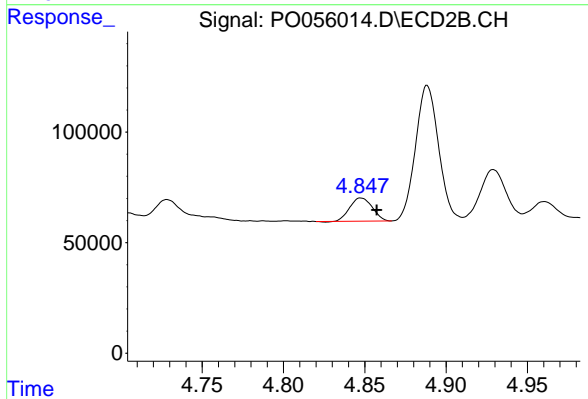
#12 AR-1232-2

R.T.: 4.674 min
 Delta R.T.: -0.009 min
 Response: 209958
 Conc: 239.55 ng/ml



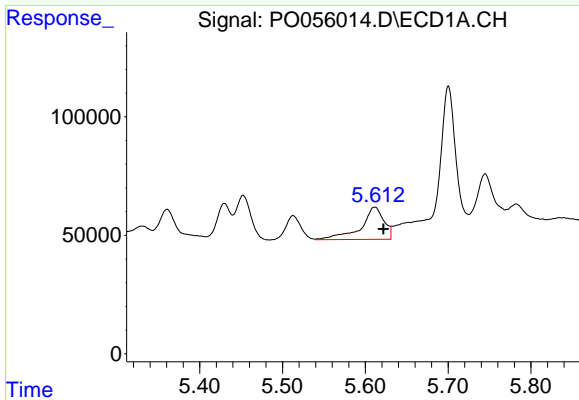
#13 AR-1232-3

R.T.: 5.452 min
 Delta R.T.: -0.010 min
 Response: 225177
 Conc: 232.74 ng/ml



#13 AR-1232-3

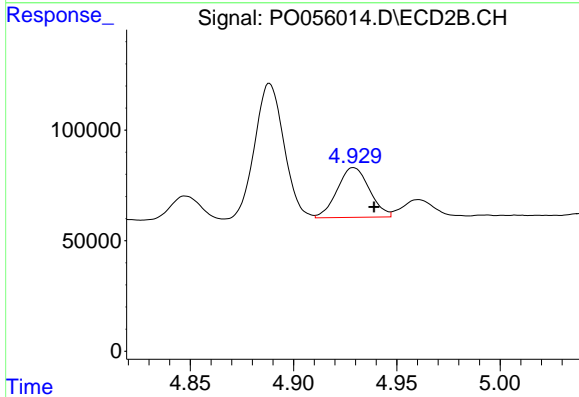
R.T.: 4.848 min
 Delta R.T.: -0.010 min
 Response: 101531
 Conc: 211.67 ng/ml



#14 AR-1232-4

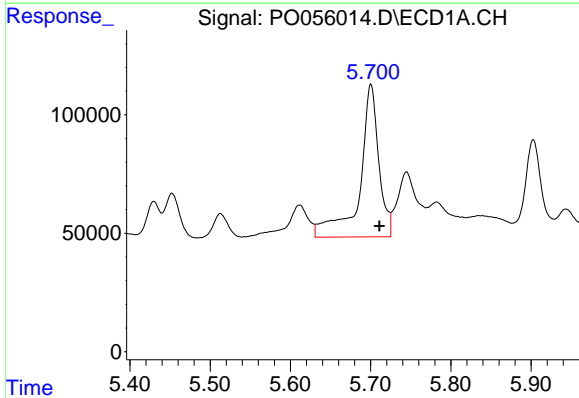
R.T.: 5.612 min
 Delta R.T.: -0.010 min
 Response: 262272
 Conc: 515.73 ng/ml

Instrument :
 ECD_O
 ClientSampleId :
 A0C2-04-F1(18-24)



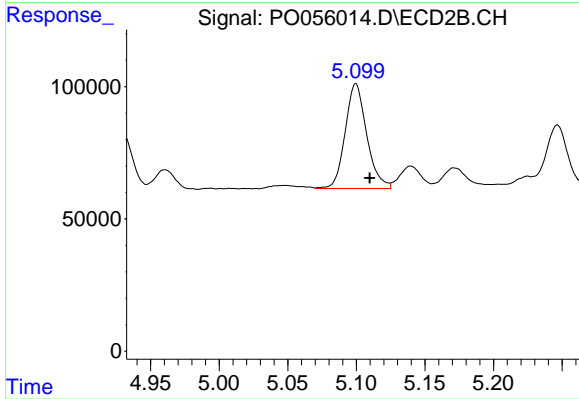
#14 AR-1232-4

R.T.: 4.929 min
 Delta R.T.: -0.010 min
 Response: 245111
 Conc: 577.05 ng/ml



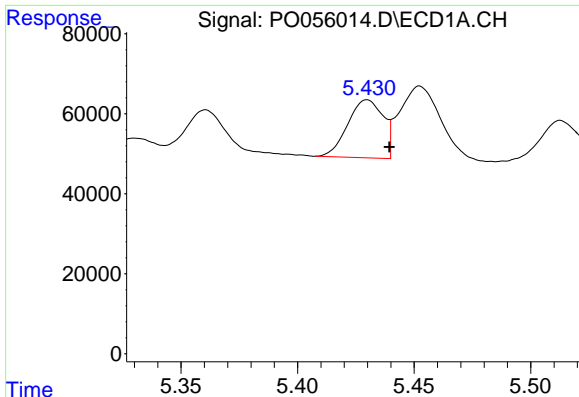
#15 AR-1232-5

R.T.: 5.700 min
 Delta R.T.: -0.011 min
 Response: 1064201
 Conc: 2451.09 ng/ml



#15 AR-1232-5

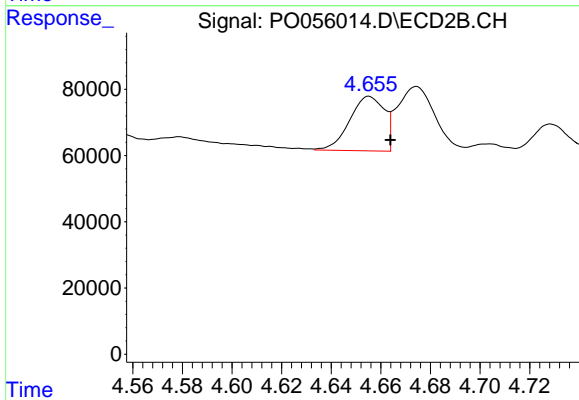
R.T.: 5.100 min
 Delta R.T.: -0.010 min
 Response: 433909
 Conc: 895.38 ng/ml



#16 AR-1242-1

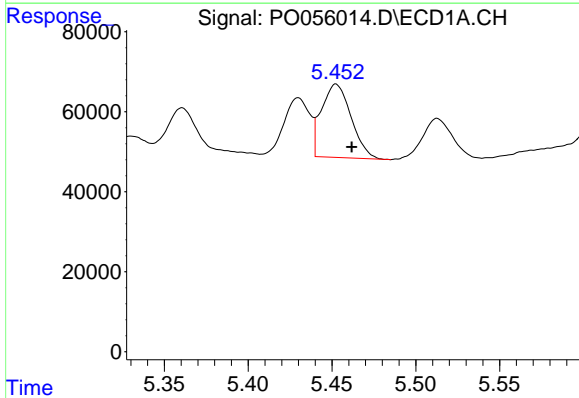
R.T.: 5.430 min
 Delta R.T.: -0.010 min
 Response: 153038
 Conc: 126.39 ng/ml

Instrument :
 ECD_O
 ClientSampleId :
 A0C2-04-F1(18-24)



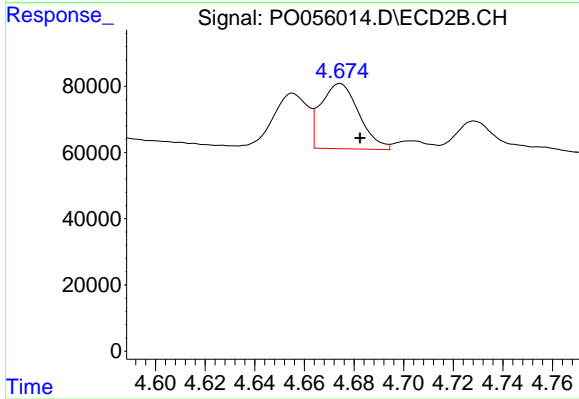
#16 AR-1242-1

R.T.: 4.655 min
 Delta R.T.: -0.009 min
 Response: 159068
 Conc: 141.95 ng/ml



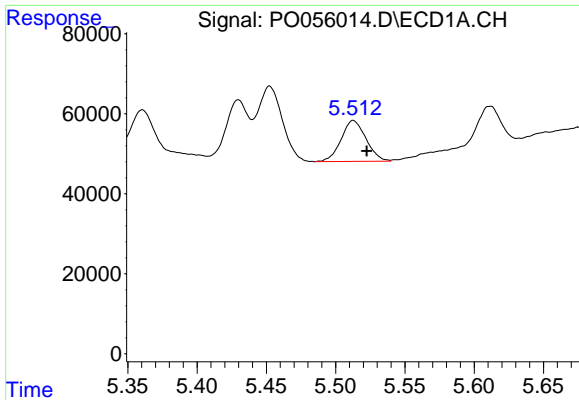
#17 AR-1242-2

R.T.: 5.452 min
 Delta R.T.: -0.009 min
 Response: 225177
 Conc: 133.37 ng/ml



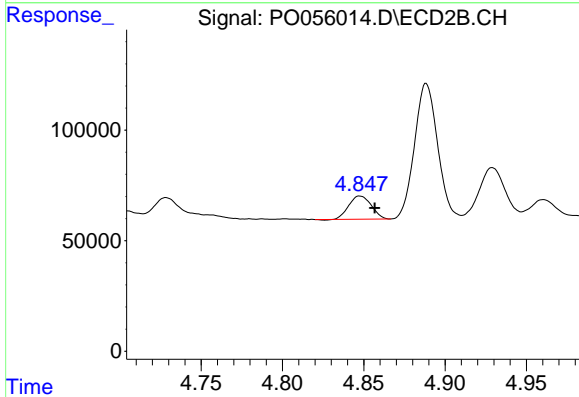
#17 AR-1242-2

R.T.: 4.674 min
 Delta R.T.: -0.008 min
 Response: 209958
 Conc: 138.00 ng/ml

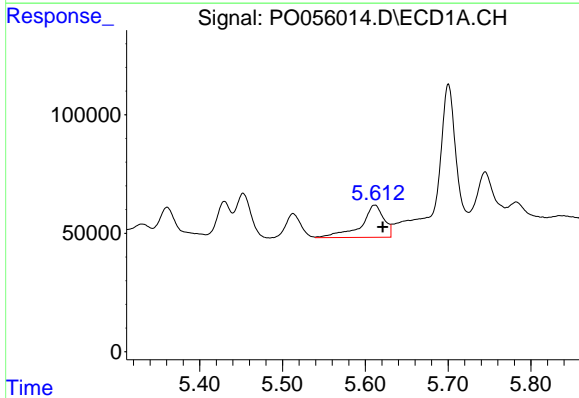


#18 AR-1242-3
 R.T.: 5.513 min
 Delta R.T.: -0.010 min
 Response: 128380
 Conc: 117.18 ng/ml

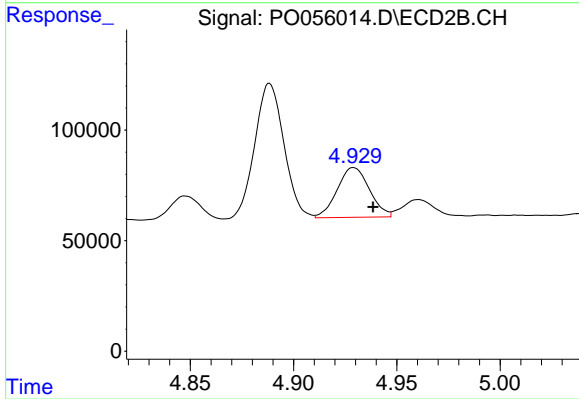
Instrument :
 ECD_O
ClientSampled :
 A0C2-04-F1(18-24)



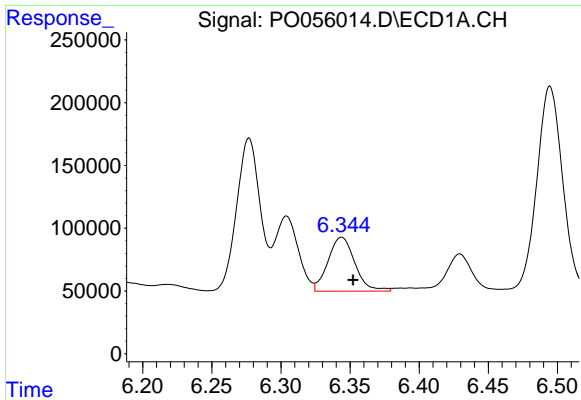
#18 AR-1242-3
 R.T.: 4.848 min
 Delta R.T.: -0.009 min
 Response: 101531
 Conc: 117.24 ng/ml



#19 AR-1242-4
 R.T.: 5.612 min
 Delta R.T.: -0.009 min
 Response: 262272
 Conc: 291.47 ng/ml



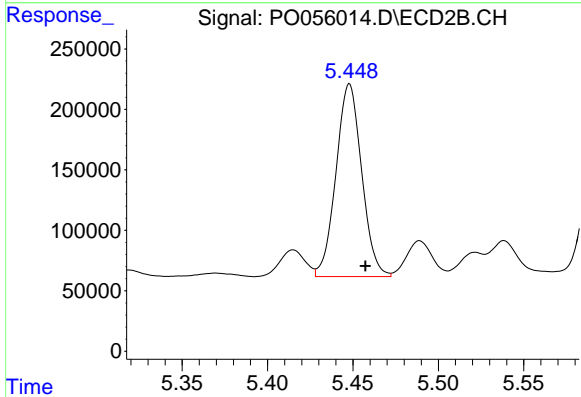
#19 AR-1242-4
 R.T.: 4.929 min
 Delta R.T.: -0.010 min
 Response: 245111
 Conc: 292.60 ng/ml



#20 AR-1242-5

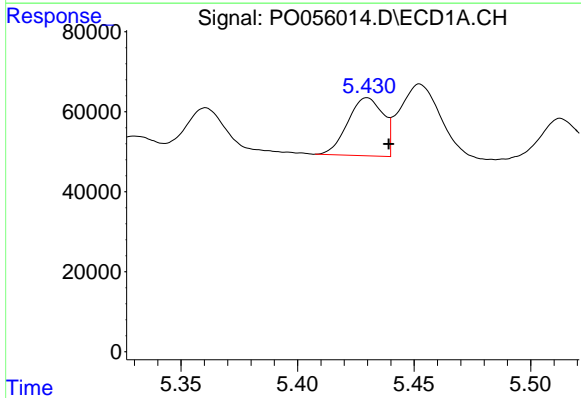
R.T.: 6.344 min
 Delta R.T.: -0.008 min
 Response: 580680
 Conc: 530.80 ng/ml

Instrument :
 ECD_O
 ClientSampleId :
 A0C2-04-F1(18-24)



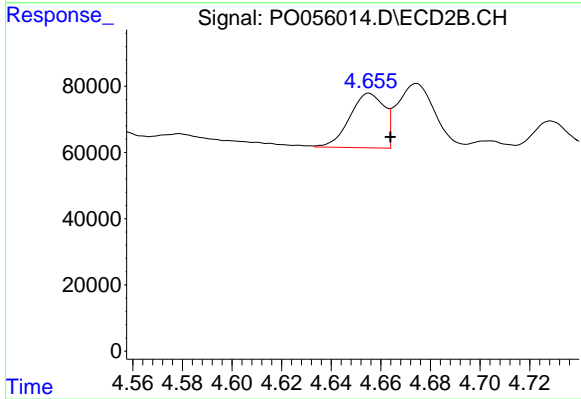
#20 AR-1242-5

R.T.: 5.448 min
 Delta R.T.: -0.009 min
 Response: 1668314
 Conc: 1389.80 ng/ml



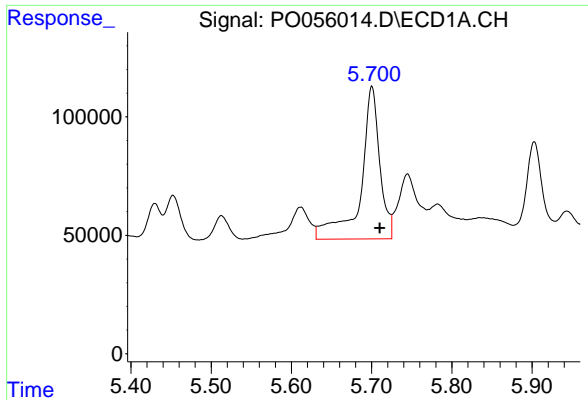
#21 AR-1248-1

R.T.: 5.430 min
 Delta R.T.: -0.009 min
 Response: 153038
 Conc: 169.08 ng/ml



#21 AR-1248-1

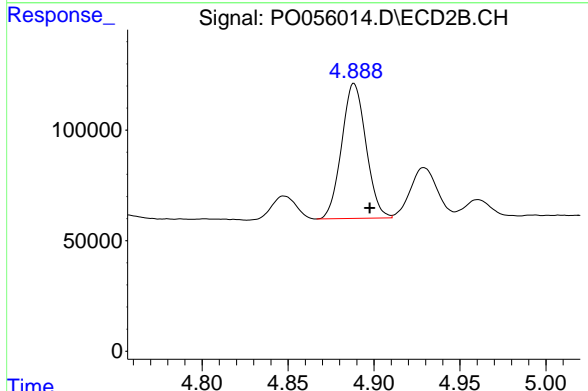
R.T.: 4.655 min
 Delta R.T.: -0.009 min
 Response: 159068
 Conc: 189.70 ng/ml



#22 AR-1248-2

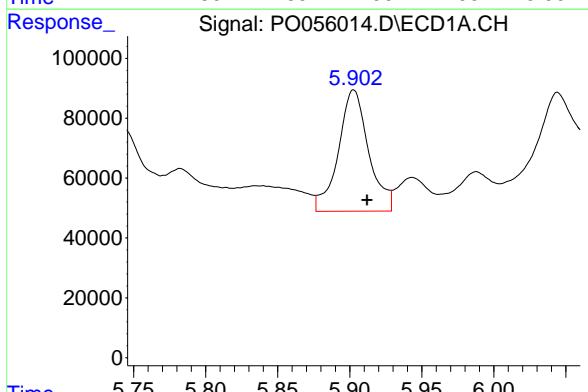
R.T.: 5.700 min
 Delta R.T.: -0.010 min
 Response: 1064201
 Conc: 797.98 ng/ml

Instrument :
 ECD_O
 ClientSampleId :
 A0C2-04-F1(18-24)



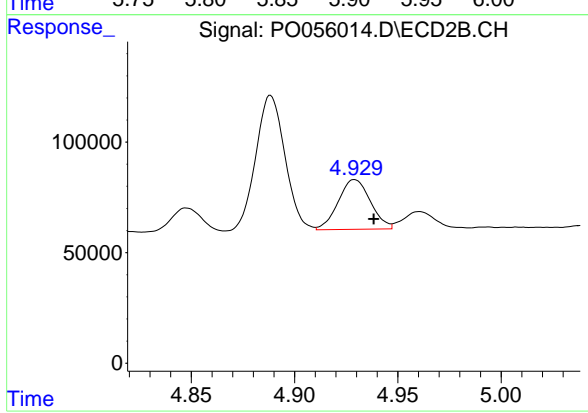
#22 AR-1248-2

R.T.: 4.888 min
 Delta R.T.: -0.009 min
 Response: 602279
 Conc: 548.14 ng/ml



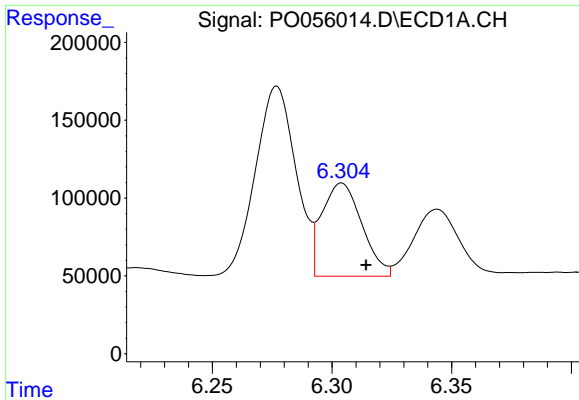
#23 AR-1248-3

R.T.: 5.903 min
 Delta R.T.: -0.009 min
 Response: 593557
 Conc: 401.94 ng/ml



#23 AR-1248-3

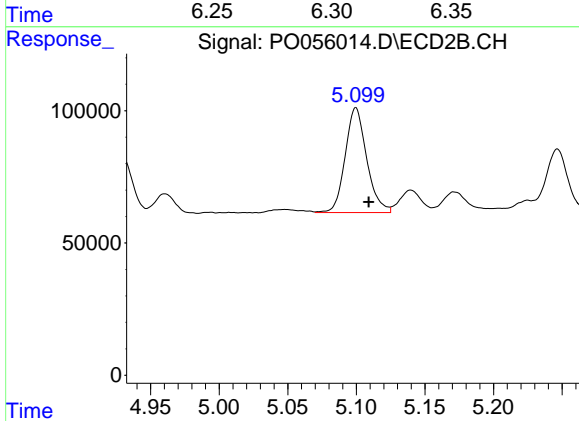
R.T.: 4.929 min
 Delta R.T.: -0.009 min
 Response: 245111
 Conc: 215.93 ng/ml



#24 AR-1248-4

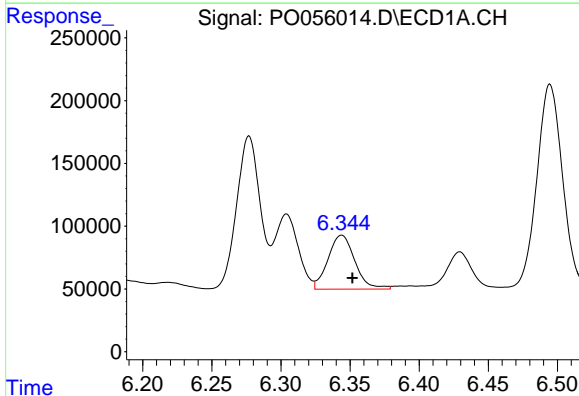
R.T.: 6.304 min
 Delta R.T.: -0.010 min
 Response: 694999
 Conc: 398.57 ng/ml

Instrument :
 ECD_O
ClientSampleId :
 A0C2-04-F1(18-24)



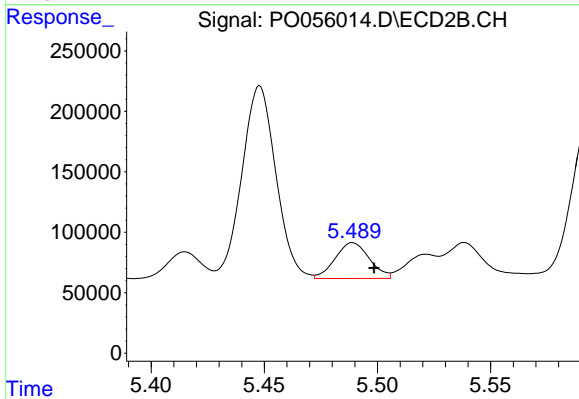
#24 AR-1248-4

R.T.: 5.100 min
 Delta R.T.: -0.009 min
 Response: 433909
 Conc: 309.01 ng/ml



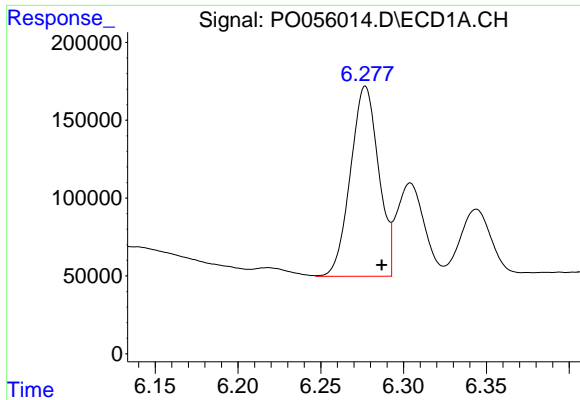
#25 AR-1248-5

R.T.: 6.344 min
 Delta R.T.: -0.008 min
 Response: 580680
 Conc: 347.64 ng/ml



#25 AR-1248-5

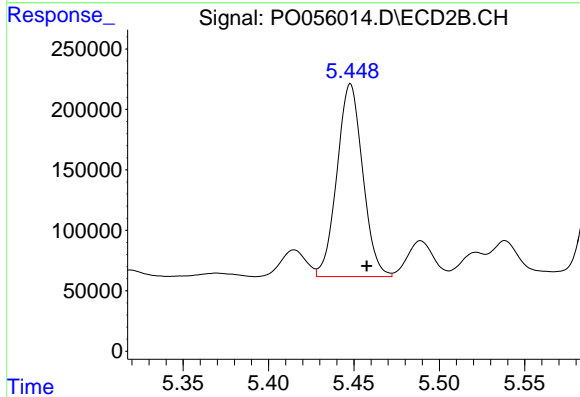
R.T.: 5.489 min
 Delta R.T.: -0.009 min
 Response: 311319
 Conc: 207.86 ng/ml



#26 AR-1254-1

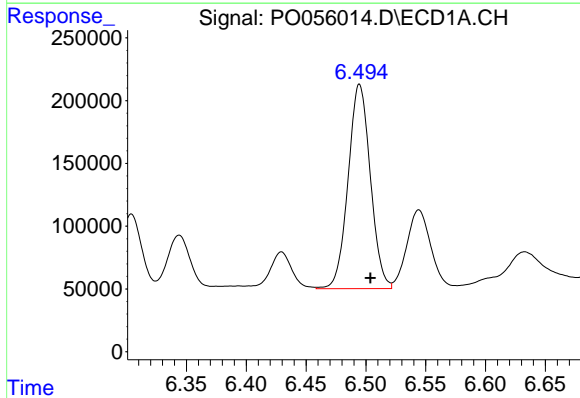
R.T.: 6.277 min
 Delta R.T.: -0.010 min
 Response: 1445293
 Conc: 688.29 ng/ml

Instrument :
 ECD_O
 ClientSampleId :
 A0C2-04-F1(18-24)



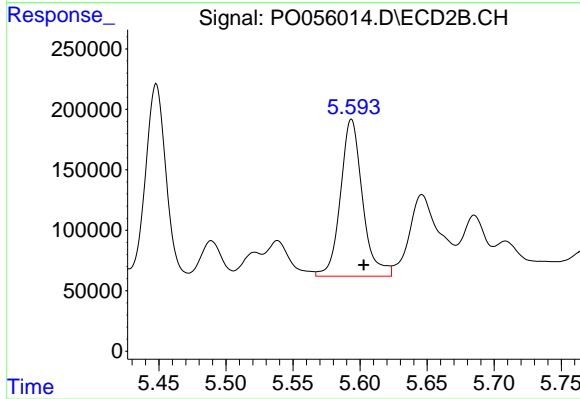
#26 AR-1254-1

R.T.: 5.448 min
 Delta R.T.: -0.009 min
 Response: 1668314
 Conc: 623.36 ng/ml



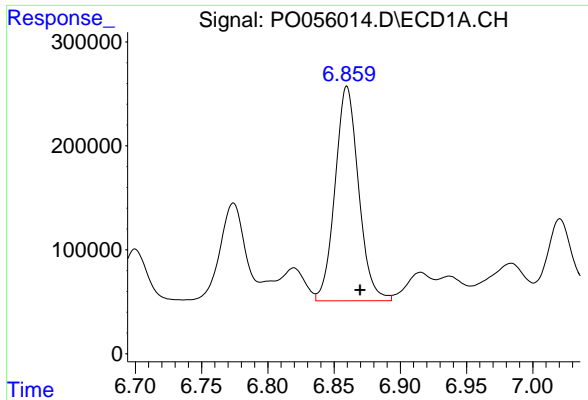
#27 AR-1254-2

R.T.: 6.495 min
 Delta R.T.: -0.009 min
 Response: 2108613
 Conc: 635.35 ng/ml



#27 AR-1254-2

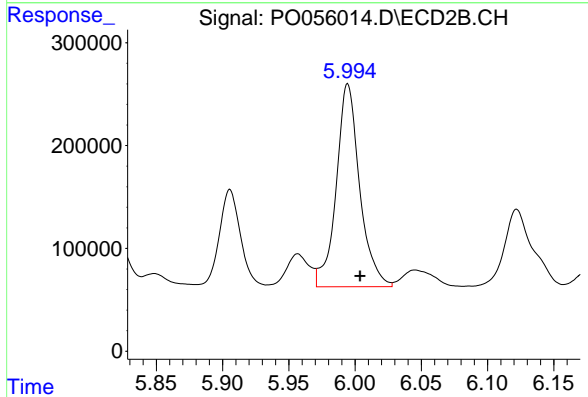
R.T.: 5.594 min
 Delta R.T.: -0.009 min
 Response: 1481330
 Conc: 606.43 ng/ml



#28 AR-1254-3

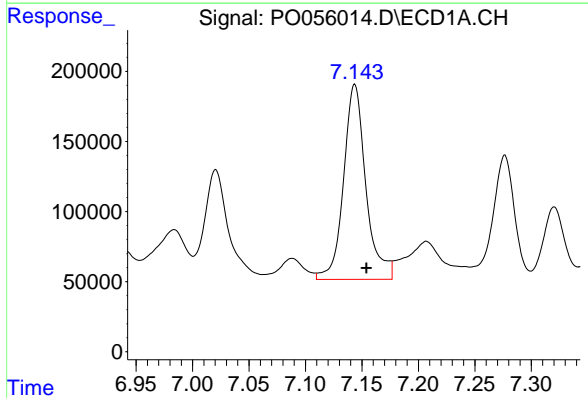
R.T.: 6.860 min
 Delta R.T.: -0.010 min
 Response: 2545784
 Conc: 700.25 ng/ml

Instrument :
 ECD_O
 ClientSampleId :
 A0C2-04-F1(18-24)



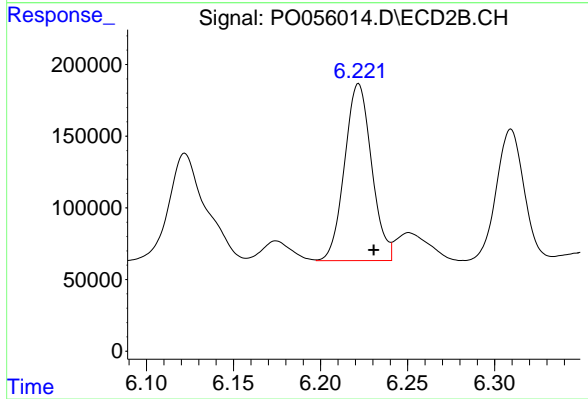
#28 AR-1254-3

R.T.: 5.995 min
 Delta R.T.: -0.009 min
 Response: 2426869
 Conc: 611.67 ng/ml



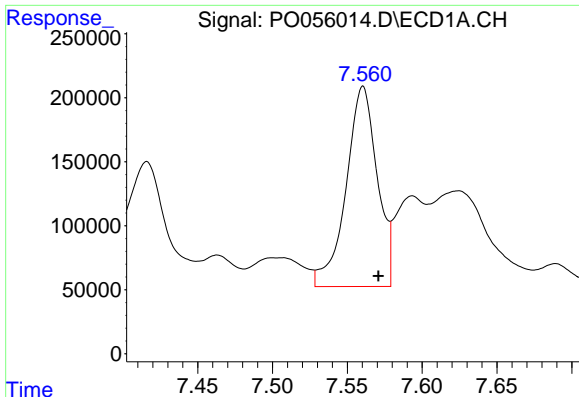
#29 AR-1254-4

R.T.: 7.144 min
 Delta R.T.: -0.010 min
 Response: 1915161
 Conc: 703.92 ng/ml



#29 AR-1254-4

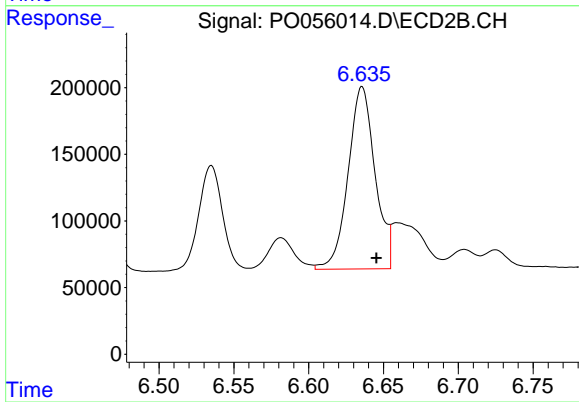
R.T.: 6.222 min
 Delta R.T.: -0.009 min
 Response: 1333032
 Conc: 497.18 ng/ml



#30 AR-1254-5

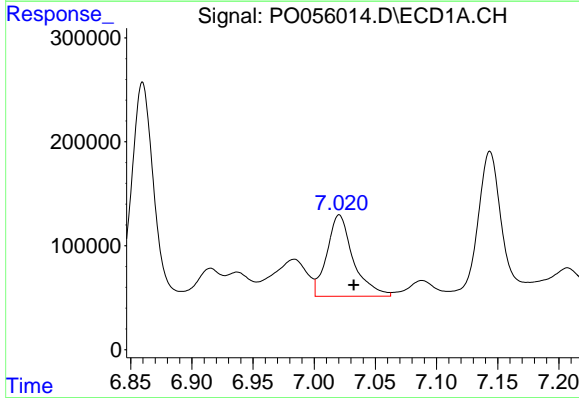
R.T.: 7.560 min
 Delta R.T.: -0.010 min
 Response: 2263828
 Conc: 789.86 ng/ml

Instrument :
 ECD_O
 ClientSampleId :
 A0C2-04-F1(18-24)



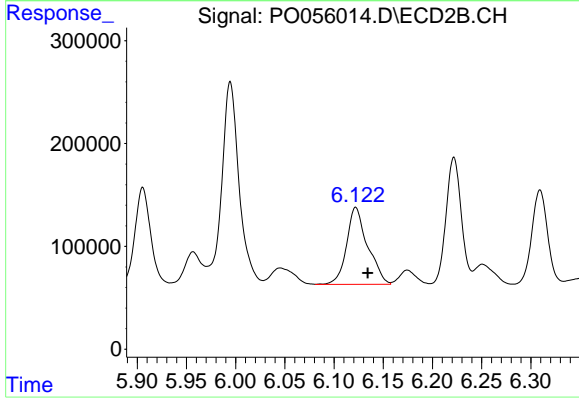
#30 AR-1254-5

R.T.: 6.636 min
 Delta R.T.: -0.010 min
 Response: 1714013
 Conc: 473.66 ng/ml



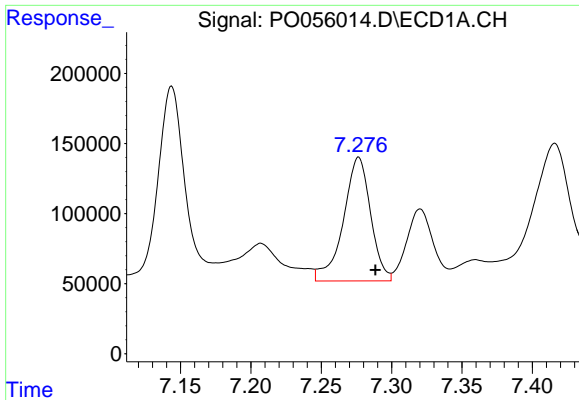
#31 AR-1260-1

R.T.: 7.021 min
 Delta R.T.: -0.012 min
 Response: 1174586
 Conc: 543.92 ng/ml



#31 AR-1260-1

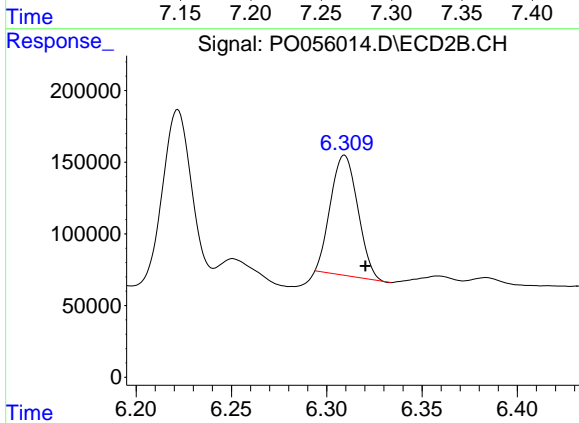
R.T.: 6.122 min
 Delta R.T.: -0.012 min
 Response: 1115935
 Conc: 506.51 ng/ml



#32 AR-1260-2

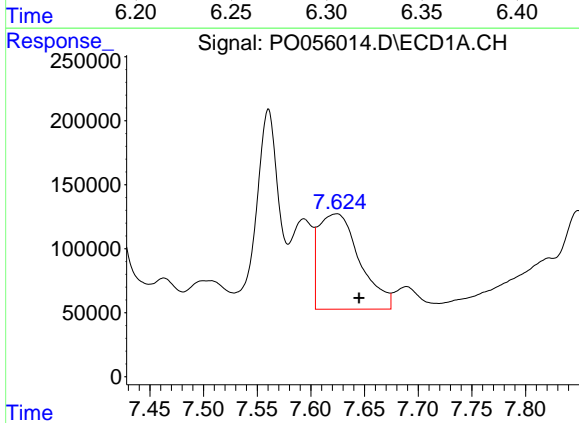
R.T.: 7.277 min
 Delta R.T.: -0.012 min
 Response: 1194320
 Conc: 456.04 ng/ml

Instrument :
 ECD_O
 ClientSampleId :
 A0C2-04-F1(18-24)



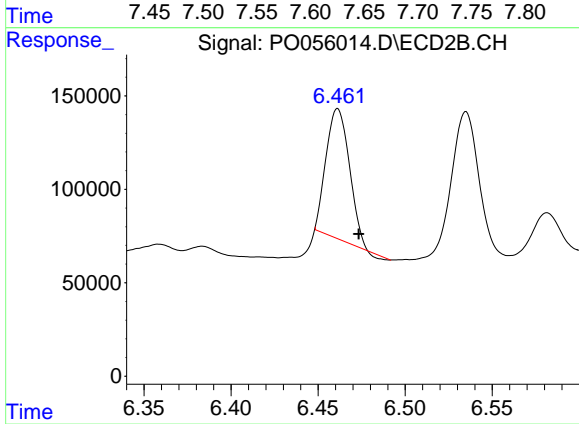
#32 AR-1260-2

R.T.: 6.309 min
 Delta R.T.: -0.011 min
 Response: 834778
 Conc: 273.38 ng/ml



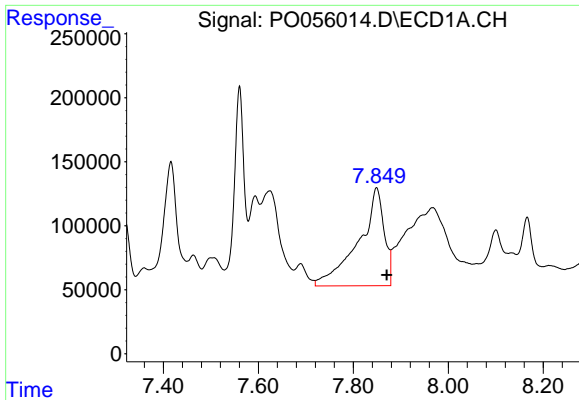
#33 AR-1260-3

R.T.: 7.624 min
 Delta R.T.: -0.021 min
 Response: 1989284
 Conc: 994.65 ng/ml



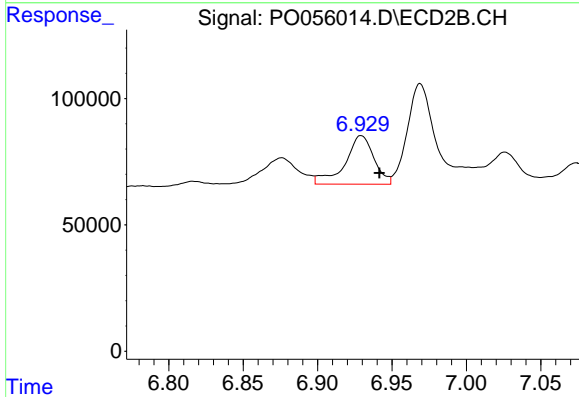
#33 AR-1260-3

R.T.: 6.461 min
 Delta R.T.: -0.012 min
 Response: 645125
 Conc: 258.88 ng/ml

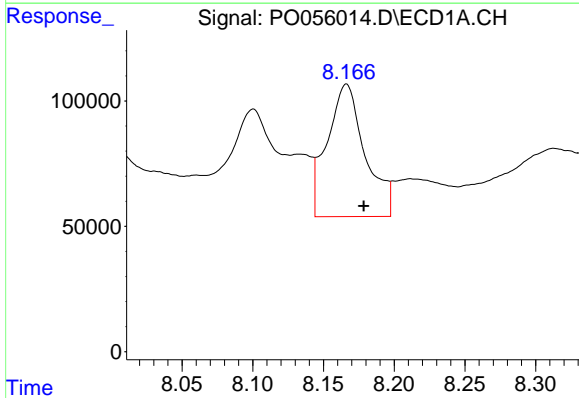


#34 AR-1260-4
 R.T.: 7.849 min
 Delta R.T.: -0.021 min
 Response: 2865900
 Conc: 1239.25 ng/ml

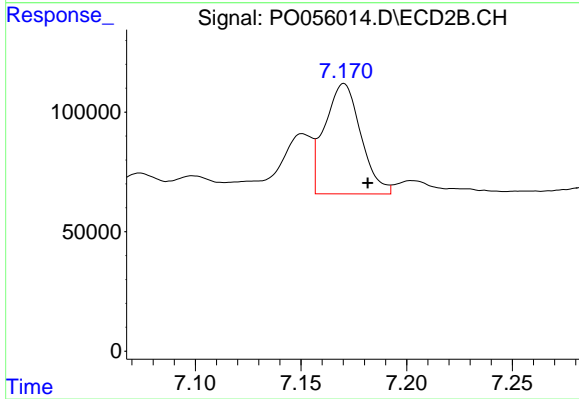
Instrument :
 ECD_O
 ClientSampleId :
 A0C2-04-F1(18-24)



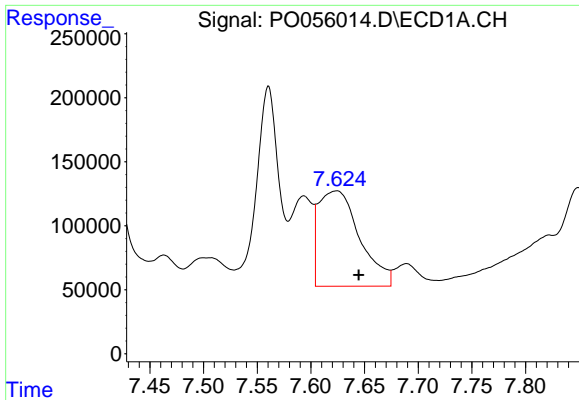
#34 AR-1260-4
 R.T.: 6.929 min
 Delta R.T.: -0.012 min
 Response: 260128
 Conc: 126.06 ng/ml



#35 AR-1260-5
 R.T.: 8.166 min
 Delta R.T.: -0.012 min
 Response: 982365
 Conc: 231.56 ng/ml

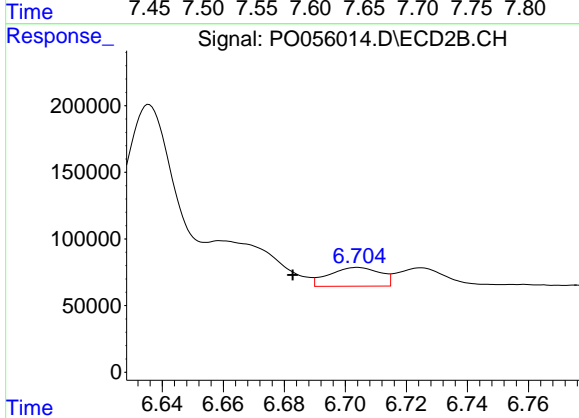


#35 AR-1260-5
 R.T.: 7.170 min
 Delta R.T.: -0.011 min
 Response: 549759
 Conc: 109.46 ng/ml

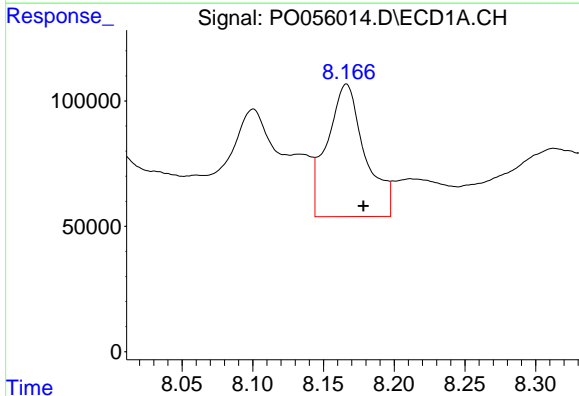


#36 AR-1262-1
 R.T.: 7.624 min
 Delta R.T.: -0.021 min
 Response: 1989284
 Conc: 620.52 ng/ml

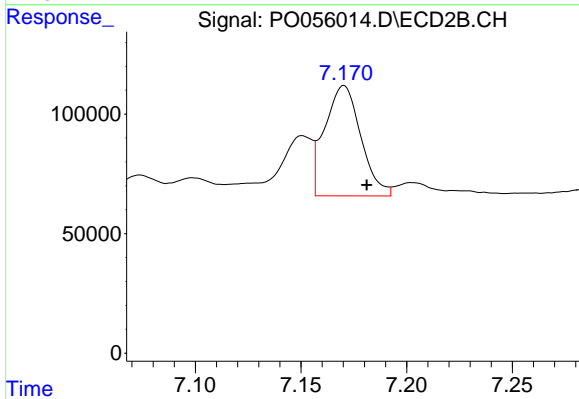
Instrument :
 ECD_O
ClientSampleId :
 A0C2-04-F1(18-24)



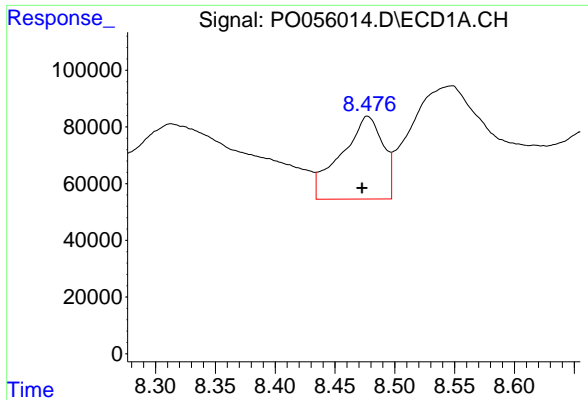
#36 AR-1262-1
 R.T.: 6.704 min
 Delta R.T.: 0.021 min
 Response: 163194
 Conc: 39.80 ng/ml



#37 AR-1262-2
 R.T.: 8.166 min
 Delta R.T.: -0.012 min
 Response: 982365
 Conc: 182.98 ng/ml



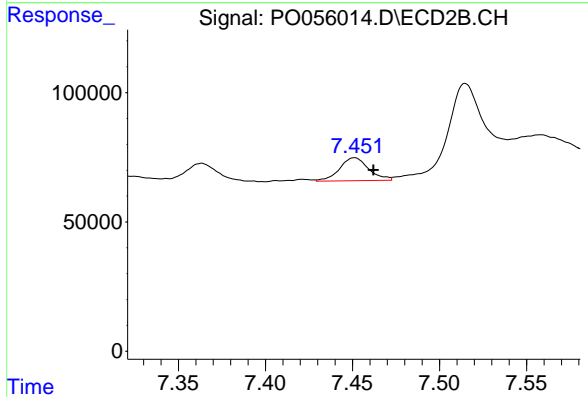
#37 AR-1262-2
 R.T.: 7.170 min
 Delta R.T.: -0.011 min
 Response: 549759
 Conc: 87.92 ng/ml



#38 AR-1262-3

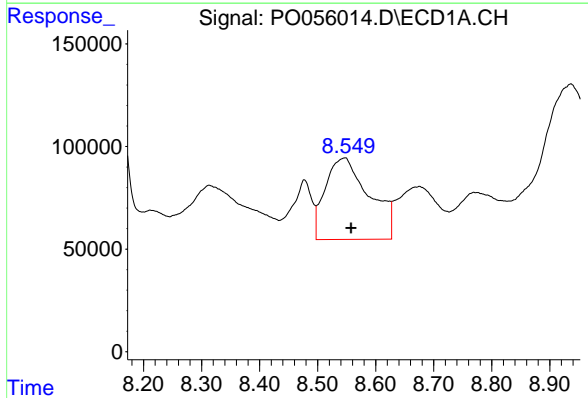
R.T.: 8.477 min
 Delta R.T.: 0.004 min
 Response: 711858
 Conc: 196.17 ng/ml

Instrument :
 ECD_O
 ClientSampleId :
 A0C2-04-F1(18-24)



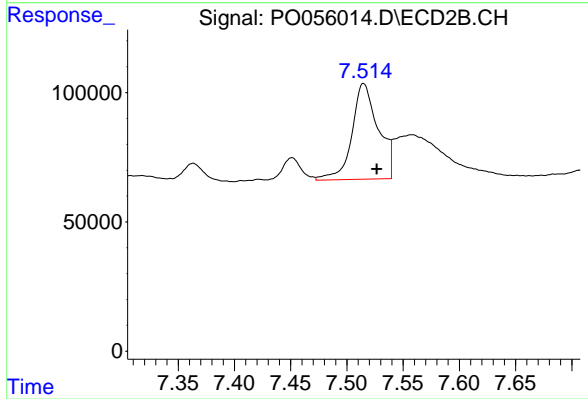
#38 AR-1262-3

R.T.: 7.451 min
 Delta R.T.: -0.011 min
 Response: 103324
 Conc: 41.95 ng/ml



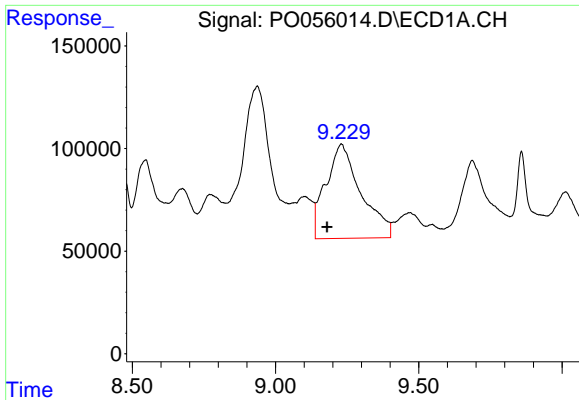
#39 AR-1262-4

R.T.: 8.547 min
 Delta R.T.: -0.010 min
 Response: 2092983
 Conc: 770.87 ng/ml



#39 AR-1262-4

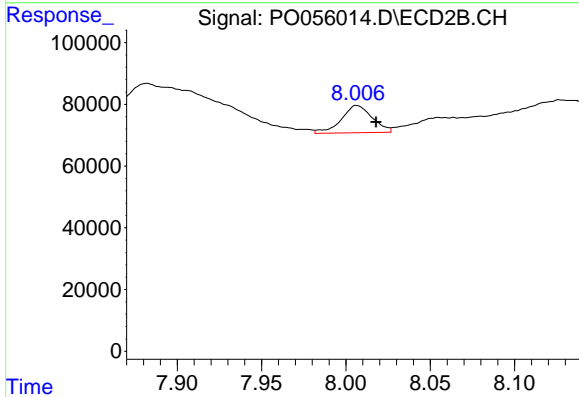
R.T.: 7.515 min
 Delta R.T.: -0.012 min
 Response: 601860
 Conc: 146.98 ng/ml



#40 AR-1262-5

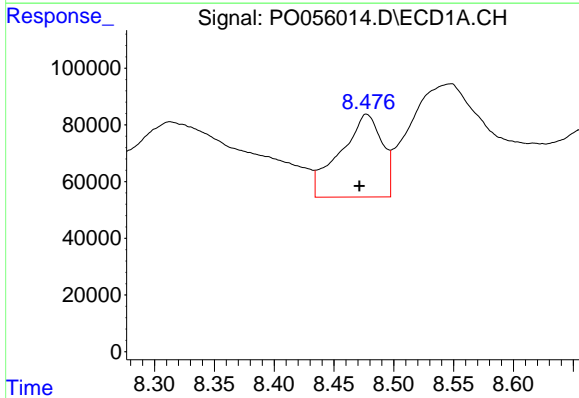
R.T.: 9.229 min
 Delta R.T.: 0.049 min
 Response: 3905276
 Conc: 2161.77 ng/ml

Instrument :
 ECD_O
 ClientSampleId :
 A0C2-04-F1(18-24)



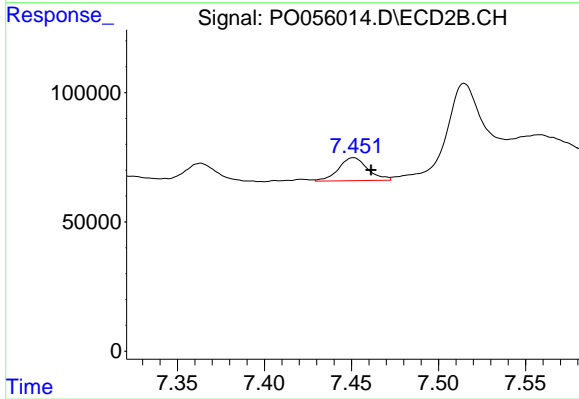
#40 AR-1262-5

R.T.: 8.007 min
 Delta R.T.: -0.011 min
 Response: 113069
 Conc: 66.35 ng/ml



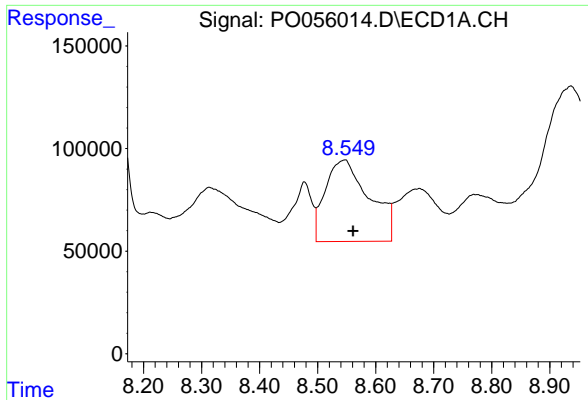
#41 AR-1268-1

R.T.: 8.477 min
 Delta R.T.: 0.006 min
 Response: 711858
 Conc: 117.88 ng/ml



#41 AR-1268-1

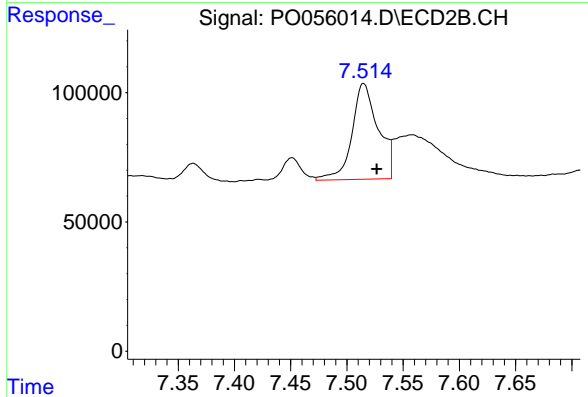
R.T.: 7.451 min
 Delta R.T.: -0.010 min
 Response: 103324
 Conc: 14.91 ng/ml



#42 AR-1268-2

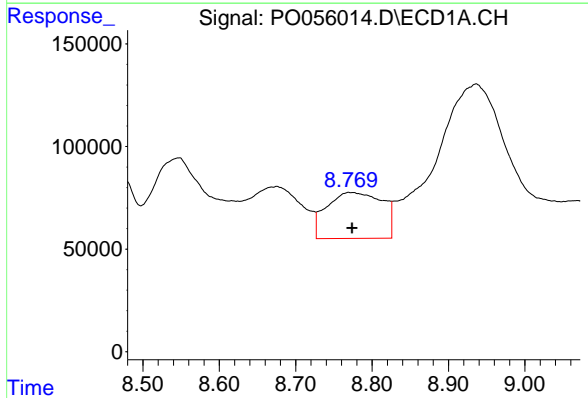
R.T.: 8.547 min
 Delta R.T.: -0.013 min
 Response: 2092983
 Conc: 382.37 ng/ml

Instrument :
 ECD_O
 ClientSampleId :
 A0C2-04-F1(18-24)



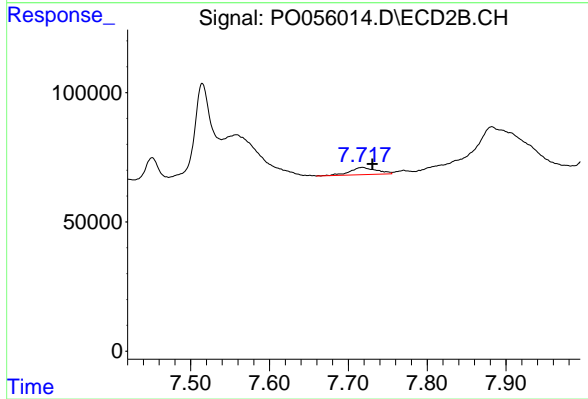
#42 AR-1268-2

R.T.: 7.515 min
 Delta R.T.: -0.012 min
 Response: 601860
 Conc: 105.79 ng/ml



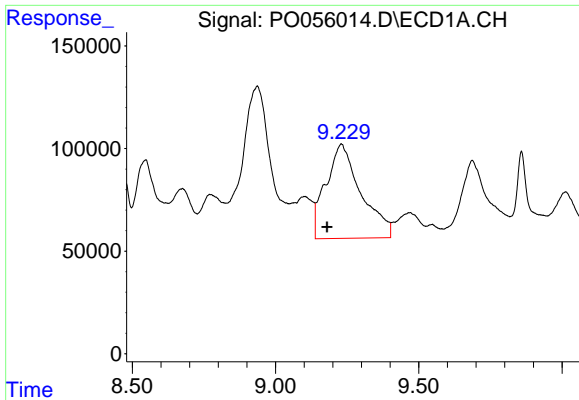
#43 AR-1268-3

R.T.: 8.769 min
 Delta R.T.: -0.005 min
 Response: 1135502
 Conc: 251.75 ng/ml



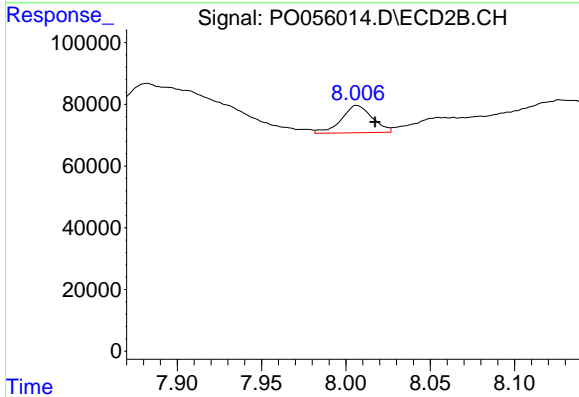
#43 AR-1268-3

R.T.: 7.718 min
 Delta R.T.: -0.013 min
 Response: 64873
 Conc: 13.74 ng/ml

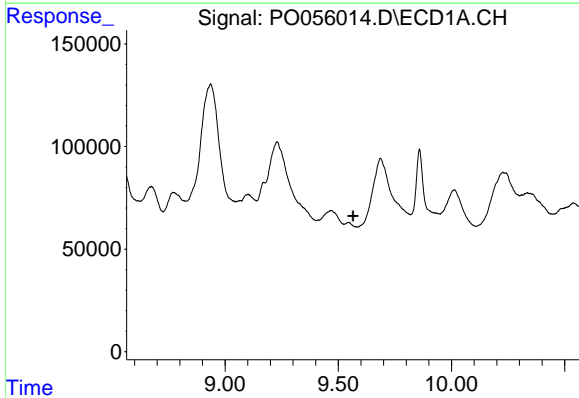


#44 AR-1268-4
 R.T.: 9.229 min
 Delta R.T.: 0.050 min
 Response: 3905276
 Conc: 1990.25 ng/ml

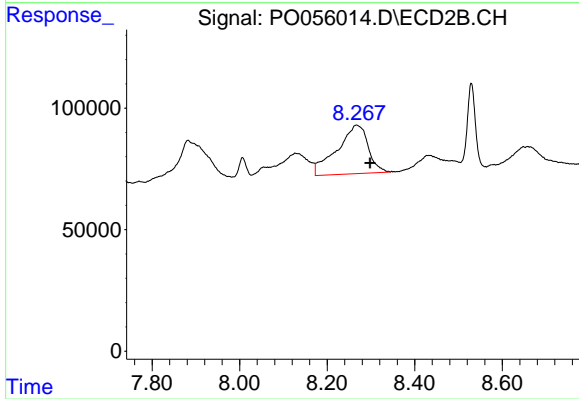
Instrument :
 ECD_O
ClientSampleId :
 A0C2-04-F1(18-24)



#44 AR-1268-4
 R.T.: 8.007 min
 Delta R.T.: -0.011 min
 Response: 113069
 Conc: 59.77 ng/ml



#45 AR-1268-5
 R.T.: 0.000 min
 Exp R.T. : 9.565 min
 Response: 0
 Conc: N.D.



#45 AR-1268-5
 R.T.: 8.267 min
 Delta R.T.: -0.031 min
 Response: 988063
 Conc: 81.13 ng/ml