

Data Path : P:\HPCHEM1\ECD\_O\Data\PO051018\  
 Data File : PO044582.D  
 Signal(s) : Signal #1: ECD1A.CH Signal #2: ECD2B.CH  
 Acq On : 10 May 2018 19:08  
 Operator : SM/UA  
 Sample : J2783-04  
 Misc :  
 ALS Vial : 29 Sample Multiplier: 1

Instrument :  
 ECD\_O  
 ClientSampleId :  
 BS-OILY-STONE-RO-208

Integration File signal 1: autoint1.e  
 Integration File signal 2: autoint2.e  
 Quant Time: May 10 19:29:36 2018  
 Quant Method : P:\HPCHEM1\ECD\_O\methods\PO050918.M  
 Quant Title : GC EXTRACTABLES  
 QLast Update : Thu May 10 02:14:16 2018  
 Response via : Initial Calibration  
 Integrator: ChemStation 6890 Scale Mode: Small noise peaks clipped

Volume Inj. : 2 µl  
 Signal #1 Phase : ZB-MR1 Signal #2 Phase: ZB-MR2  
 Signal #1 Info : 30Mx0.32mmx 0.50µ Signal #2 Info : 30M x 0.32mm x 0.25µm

Compound	RT#1	RT#2	Resp#1	Resp#2	ng/ml	ng/ml
-----						
System Monitoring Compounds						
1) SA Tetrachlo...	4.037	3.304	3022127	3127186	15.023	11.548
2) SA Decachlor...	9.358	8.043	2578203	2678378	17.756	15.330
Target Compounds						
12) L3 AR-1232-2	5.097	0.000	856994	0	291.169	N.D. #
28) L6 AR-1254-3	6.553	0.000	161915	0	13.393	N.D. #
32) L7 AR-1260-2	6.955	5.914	143380	208990	13.689	11.405
33) L7 AR-1260-3	0.000	6.228	0	60859	N.D.	3.721 #
34) L7 AR-1260-4	7.828	6.755	167213	243753	9.703	8.941
35) L7 AR-1260-5	0.000	7.088	0	237449	N.D.	13.300 #
36) L8 AR-1262-1	0.000	5.914	0	208990	N.D.	12.198 #
37) L8 AR-1262-2	6.955	0.000	143380	0	14.316	N.D. #
38) L8 AR-1262-3	7.232	6.228	111911	60859	12.564	2.222 #
40) L8 AR-1262-5	7.828	6.755	167213	243753	6.778	5.367
41) L9 AR-1268-1	0.000	7.088	0	237449	N.D.	5.223 #
42) L9 AR-1268-2	0.000	7.088	0	237449	N.D.	5.829 #

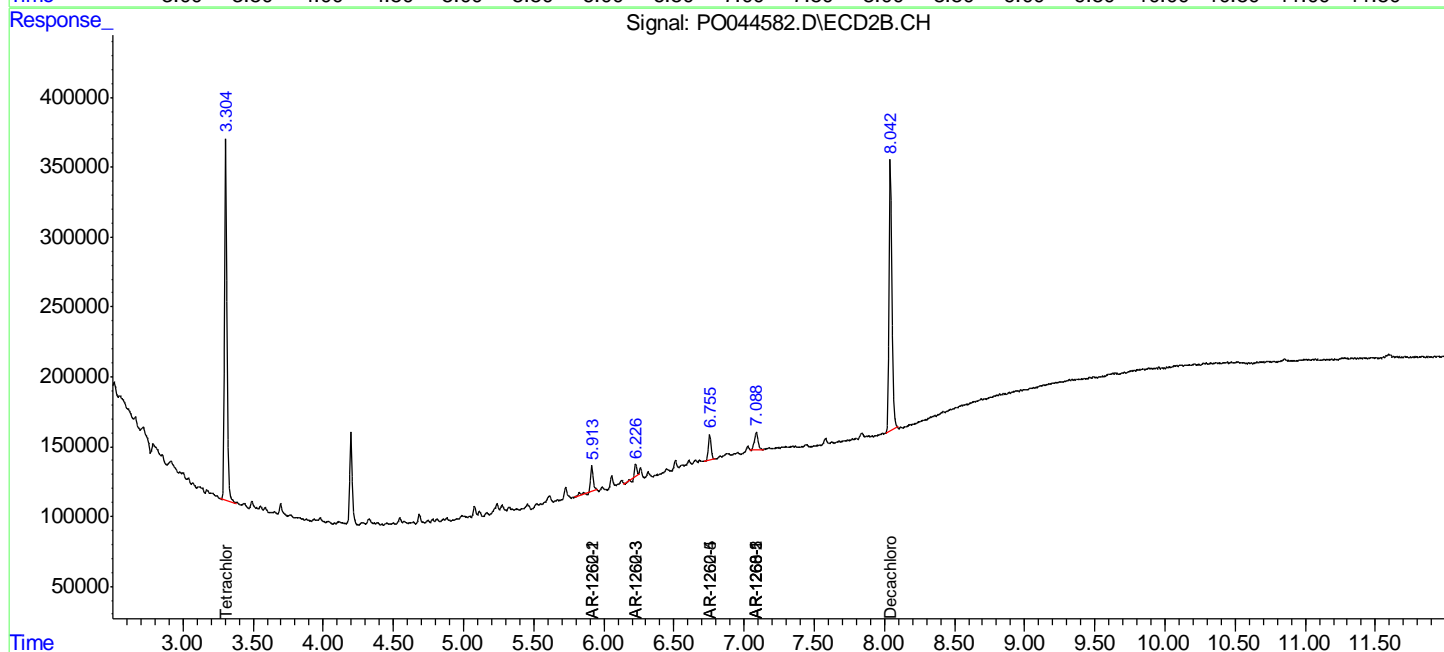
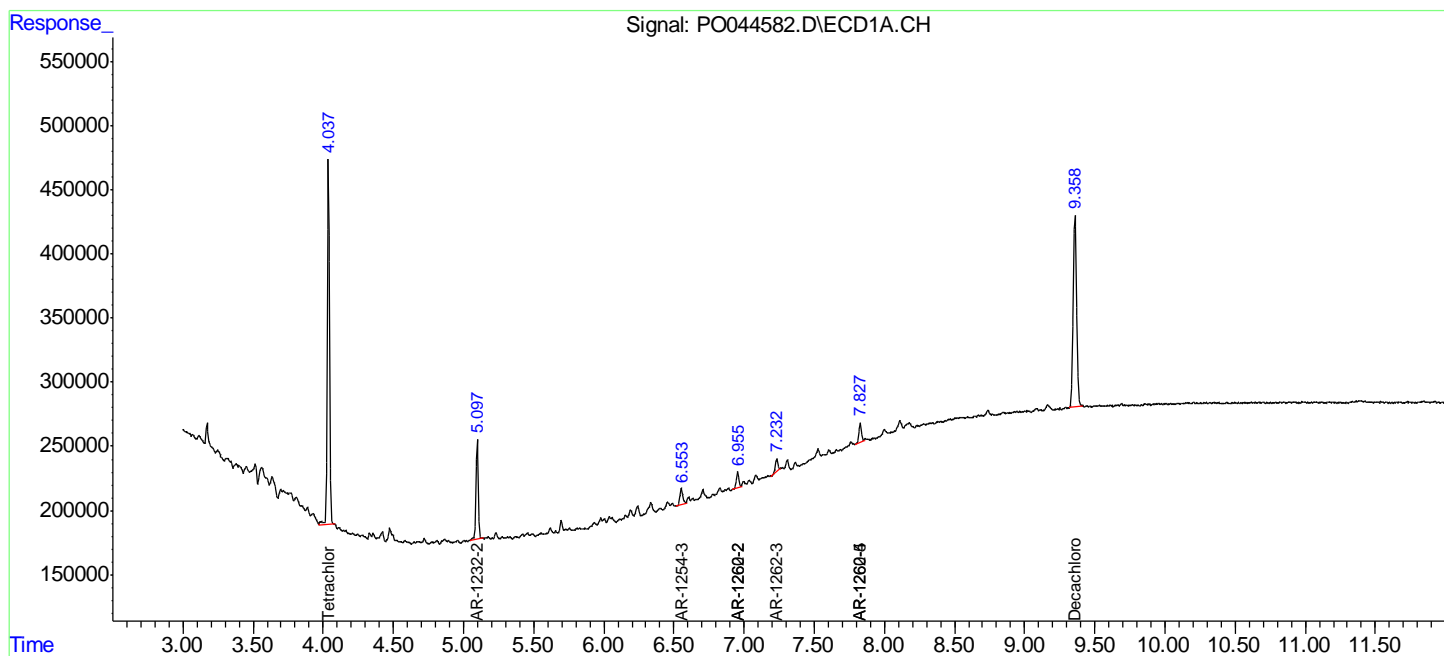
(f)=RT Delta > 1/2 Window (#)=Amounts differ by > 25% (m)=manual int.

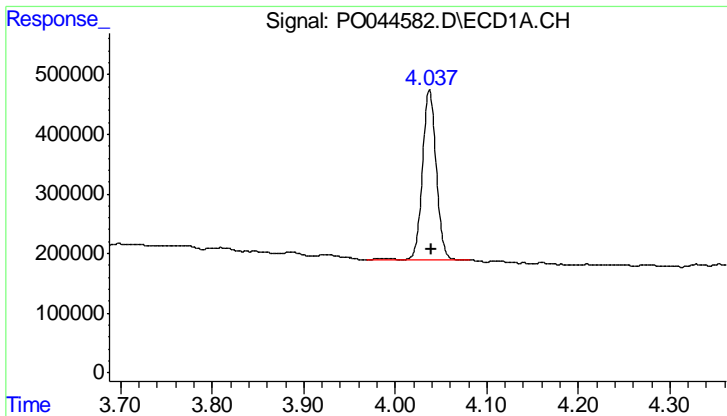
Data Path : P:\HPCHEM1\ECD\_O\Data\PO051018\  
 Data File : PO044582.D  
 Signal(s) : Signal #1: ECD1A.CH Signal #2: ECD2B.CH  
 Acq On : 10 May 2018 19:08  
 Operator : SM/UA  
 Sample : J2783-04  
 Misc :  
 ALS Vial : 29 Sample Multiplier: 1

**Instrument :**  
 ECD\_O  
**ClientSampled :**  
 BS-OILY-STONE-RO-208

Integration File signal 1: autoint1.e  
 Integration File signal 2: autoint2.e  
 Quant Time: May 10 19:29:36 2018  
 Quant Method : P:\HPCHEM1\ECD\_O\methods\PO050918.M  
 Quant Title : GC EXTRACTABLES  
 QLast Update : Thu May 10 02:14:16 2018  
 Response via : Initial Calibration  
 Integrator: ChemStation 6890 Scale Mode: Small noise peaks clipped

Volume Inj. : 2 µl  
 Signal #1 Phase : ZB-MR1 Signal #2 Phase: ZB-MR2  
 Signal #1 Info : 30Mx0.32mmx 0.50µ Signal #2 Info : 30M x 0.32mm x 0.25µm

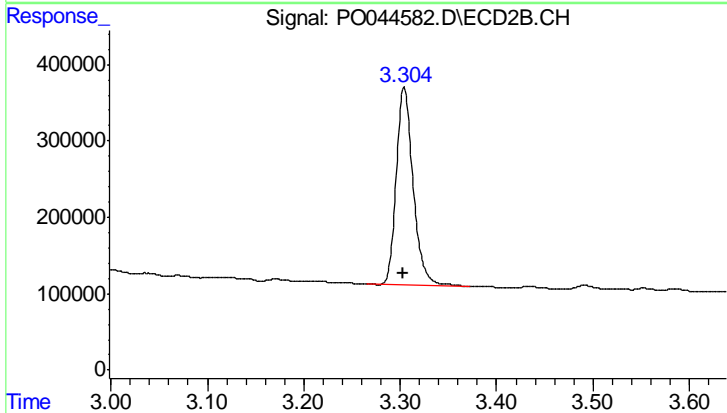




#1 Tetrachloro-m-xylene

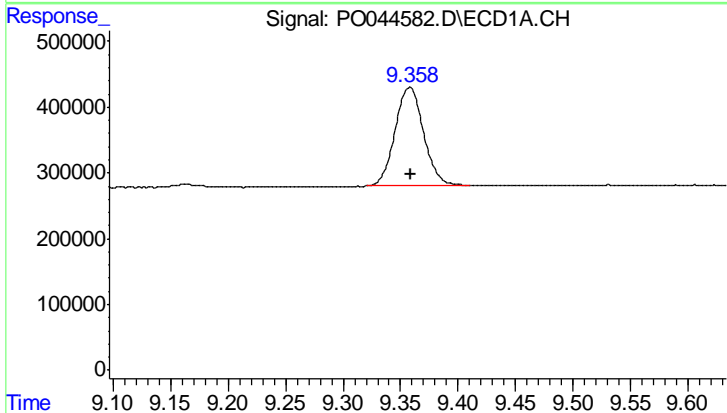
R.T.: 4.037 min  
 Delta R.T.: -0.002 min  
 Response: 3022127  
 Conc: 15.02 ng/ml

Instrument :  
 ECD\_O  
 ClientSampleId :  
 BS-OILY-STONE-RO-208



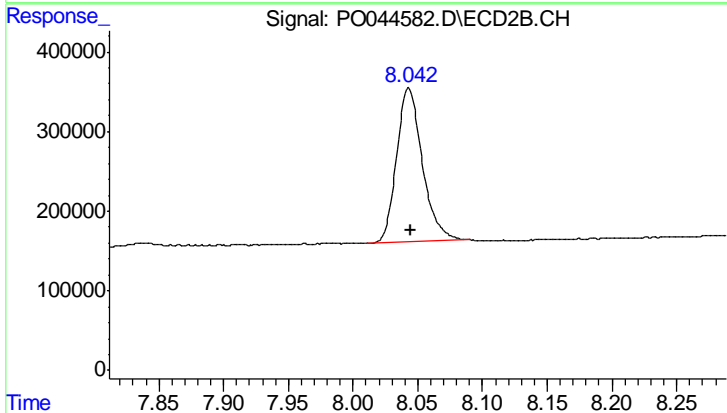
#1 Tetrachloro-m-xylene

R.T.: 3.304 min  
 Delta R.T.: 0.001 min  
 Response: 3127186  
 Conc: 11.55 ng/ml



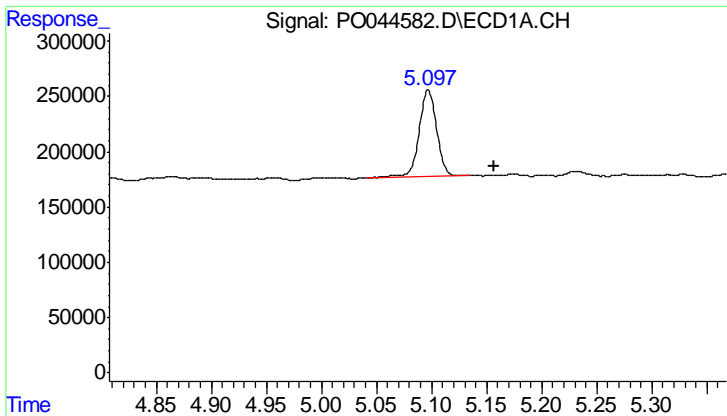
#2 Decachlorobiphenyl

R.T.: 9.358 min  
 Delta R.T.: -0.001 min  
 Response: 2578203  
 Conc: 17.76 ng/ml



#2 Decachlorobiphenyl

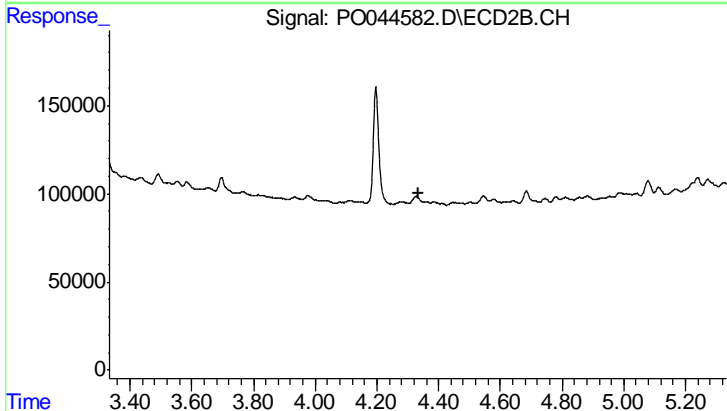
R.T.: 8.043 min  
 Delta R.T.: -0.001 min  
 Response: 2678378  
 Conc: 15.33 ng/ml



#12 AR-1232-2

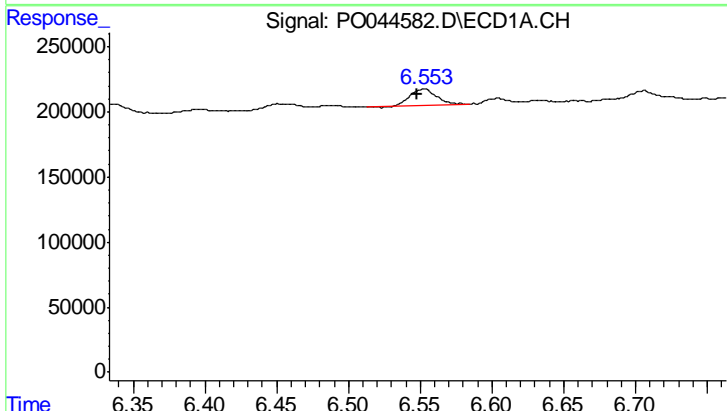
R.T.: 5.097 min  
 Delta R.T.: -0.060 min  
 Response: 856994  
 Conc: 291.17 ng/ml

Instrument :  
 ECD\_O  
 ClientSampleId :  
 BS-OILY-STONE-RO-208



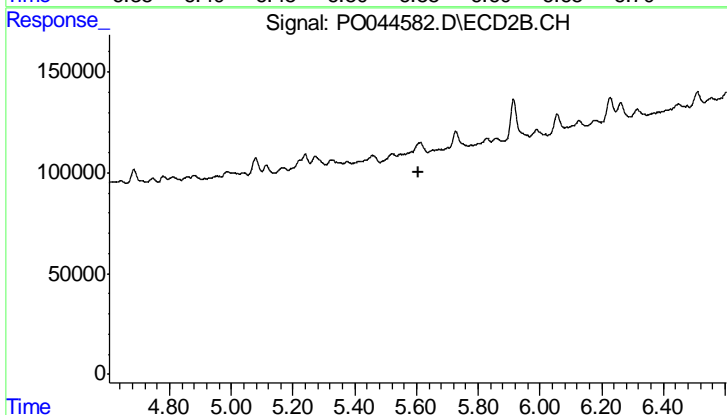
#12 AR-1232-2

R.T.: 0.000 min  
 Exp R.T. : 4.333 min  
 Response: 0  
 Conc: N.D.



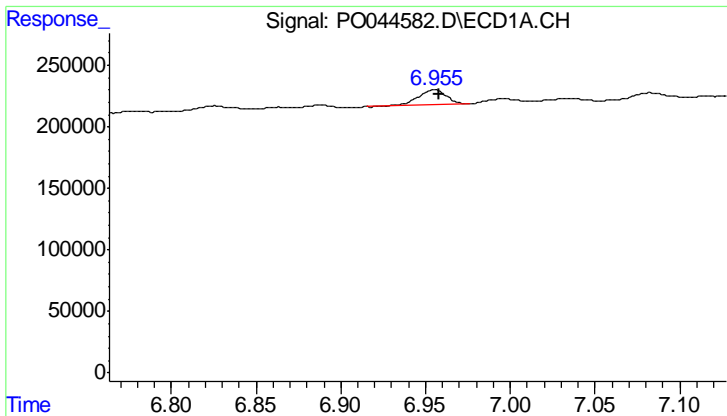
#28 AR-1254-3

R.T.: 6.553 min  
 Delta R.T.: 0.004 min  
 Response: 161915  
 Conc: 13.39 ng/ml



#28 AR-1254-3

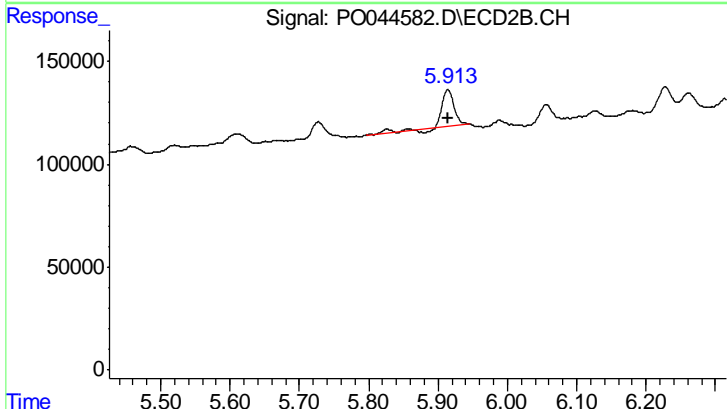
R.T.: 0.000 min  
 Exp R.T. : 5.605 min  
 Response: 0  
 Conc: N.D.



#32 AR-1260-2

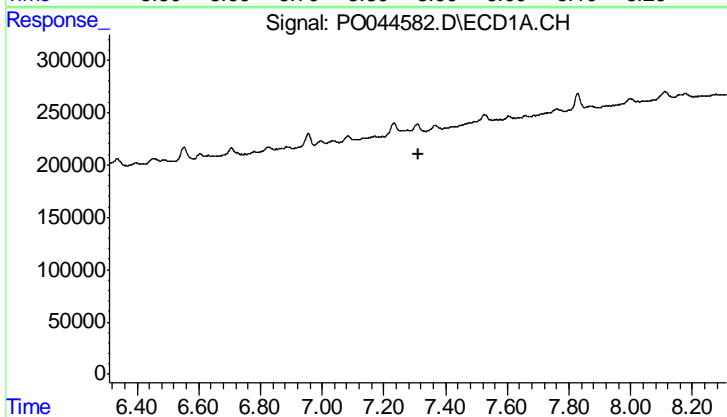
R.T.: 6.955 min  
 Delta R.T.: -0.003 min  
 Response: 143380  
 Conc: 13.69 ng/ml

Instrument :  
 ECD\_O  
 ClientSampleId :  
 BS-OILY-STONE-RO-208



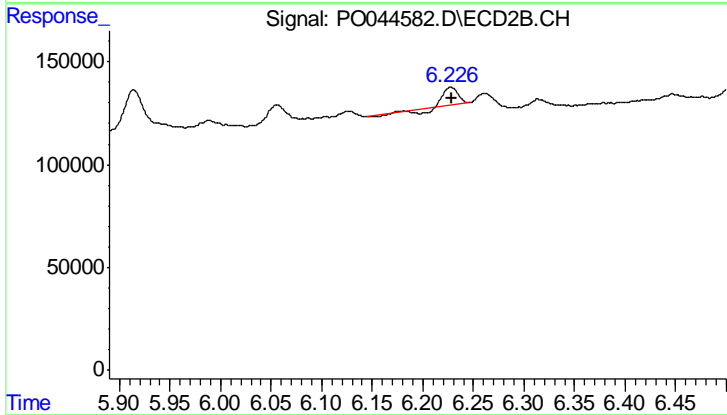
#32 AR-1260-2

R.T.: 5.914 min  
 Delta R.T.: 0.000 min  
 Response: 208990  
 Conc: 11.40 ng/ml



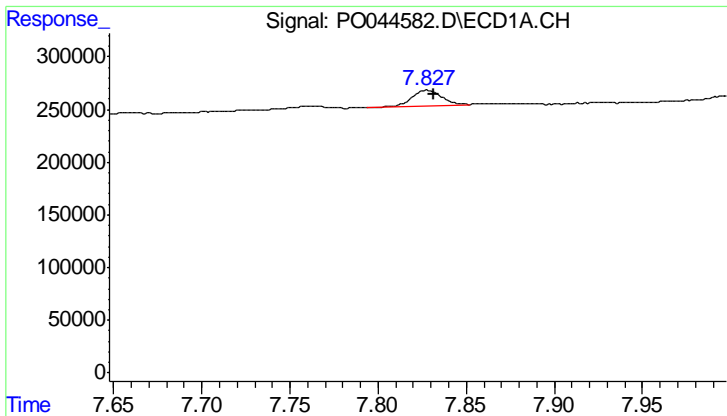
#33 AR-1260-3

R.T.: 0.000 min  
 Exp R.T. : 7.311 min  
 Response: 0  
 Conc: N.D.



#33 AR-1260-3

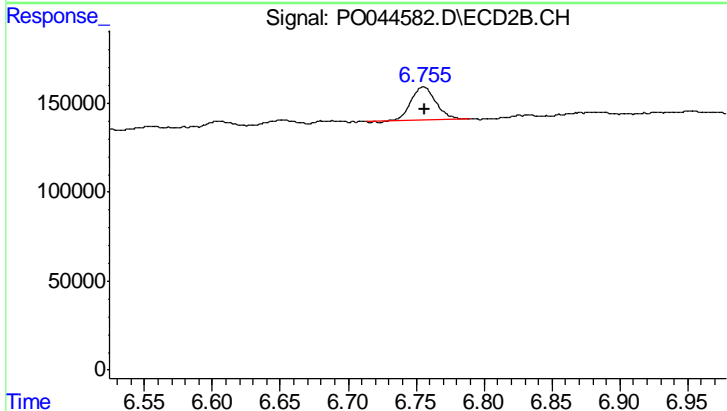
R.T.: 6.228 min  
 Delta R.T.: -0.001 min  
 Response: 60859  
 Conc: 3.72 ng/ml



#34 AR-1260-4

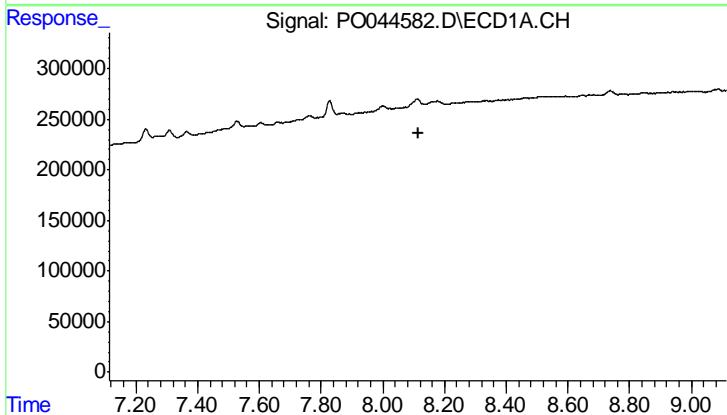
R.T.: 7.828 min  
 Delta R.T.: -0.004 min  
 Response: 167213  
 Conc: 9.70 ng/ml

**Instrument :**  
 ECD\_O  
**ClientSampleId :**  
 BS-OILY-STONE-RO-208



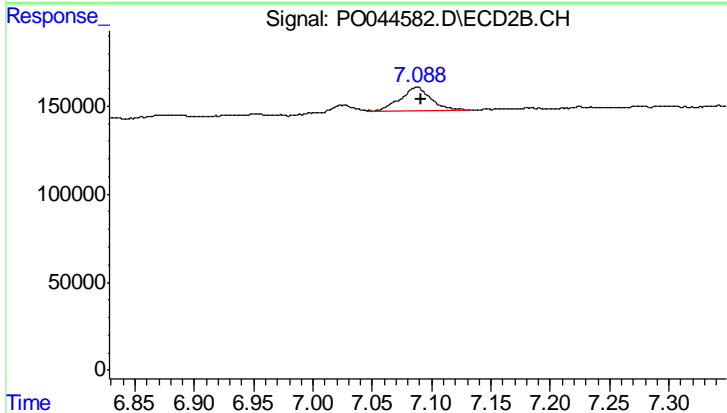
#34 AR-1260-4

R.T.: 6.755 min  
 Delta R.T.: -0.001 min  
 Response: 243753  
 Conc: 8.94 ng/ml



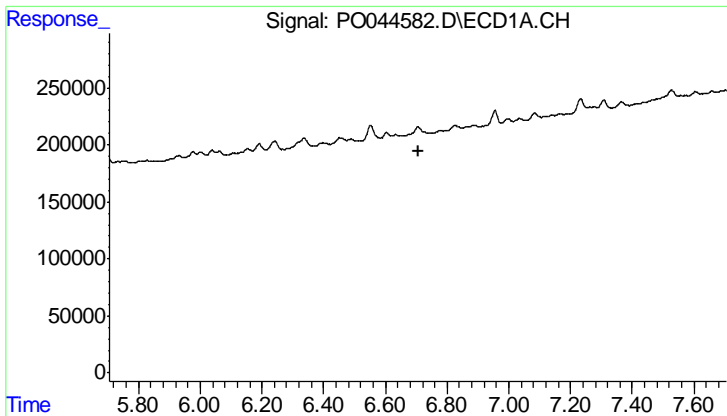
#35 AR-1260-5

R.T.: 0.000 min  
 Exp R.T. : 8.114 min  
 Response: 0  
 Conc: N.D.



#35 AR-1260-5

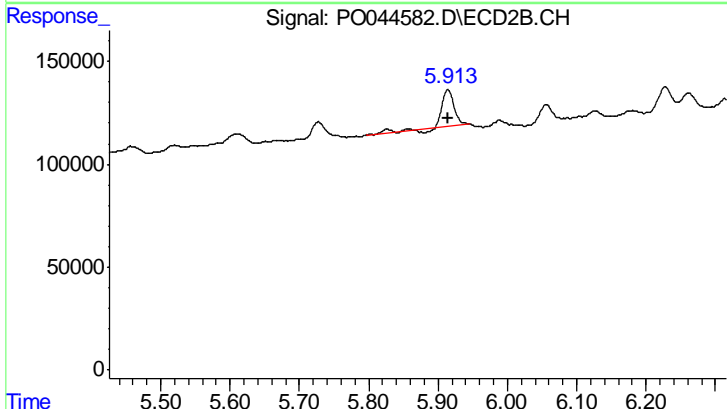
R.T.: 7.088 min  
 Delta R.T.: -0.003 min  
 Response: 237449  
 Conc: 13.30 ng/ml



#36 AR-1262-1

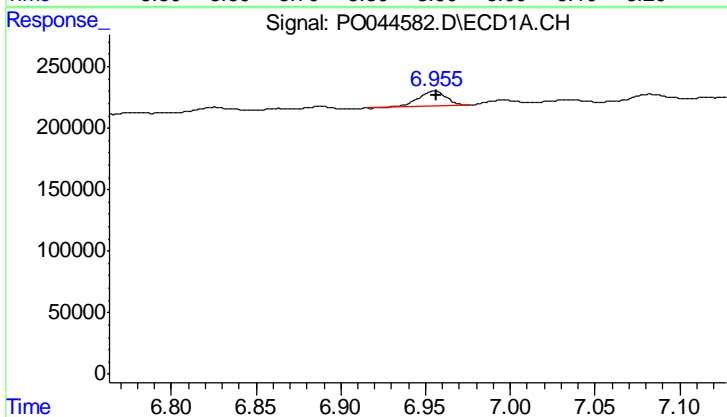
R.T.: 0.000 min  
 Exp R.T.: 6.706 min  
 Response: 0  
 Conc: N.D.

Instrument :  
 ECD\_O  
 ClientSampleId :  
 BS-OILY-STONE-RO-208



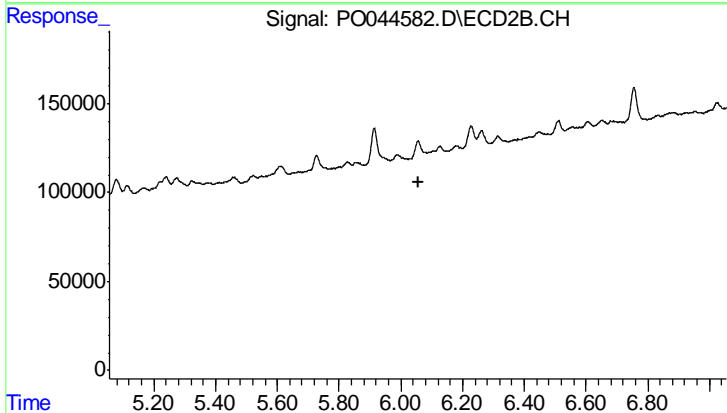
#36 AR-1262-1

R.T.: 5.914 min  
 Delta R.T.: 0.000 min  
 Response: 208990  
 Conc: 12.20 ng/ml



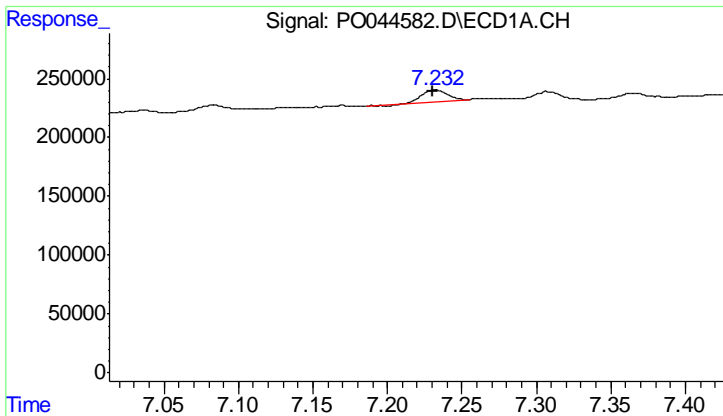
#37 AR-1262-2

R.T.: 6.955 min  
 Delta R.T.: 0.000 min  
 Response: 143380  
 Conc: 14.32 ng/ml



#37 AR-1262-2

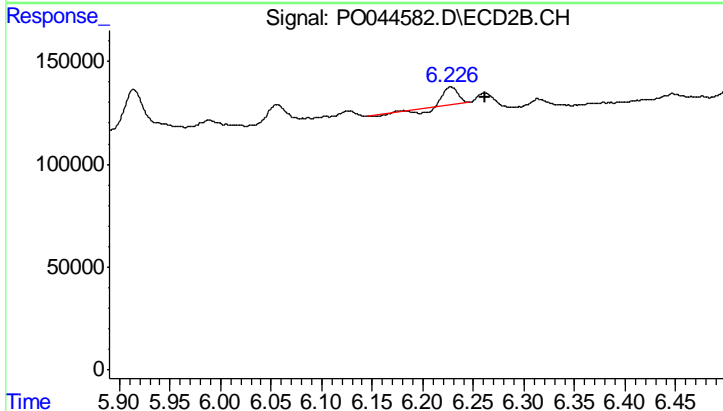
R.T.: 0.000 min  
 Exp R.T.: 6.056 min  
 Response: 0  
 Conc: N.D.



#38 AR-1262-3

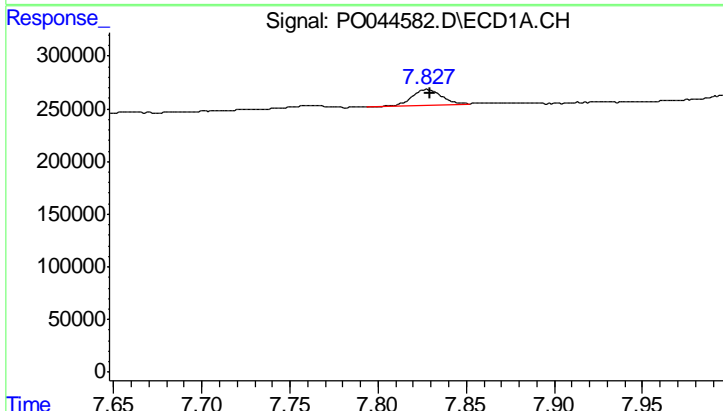
R.T.: 7.232 min  
 Delta R.T.: 0.002 min  
 Response: 111911  
 Conc: 12.56 ng/ml

Instrument :  
 ECD\_O  
 ClientSampleId :  
 BS-OILY-STONE-RO-208



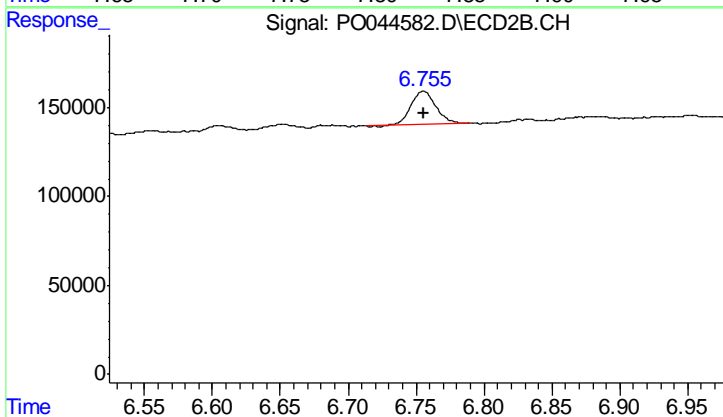
#38 AR-1262-3

R.T.: 6.228 min  
 Delta R.T.: -0.034 min  
 Response: 60859  
 Conc: 2.22 ng/ml



#40 AR-1262-5

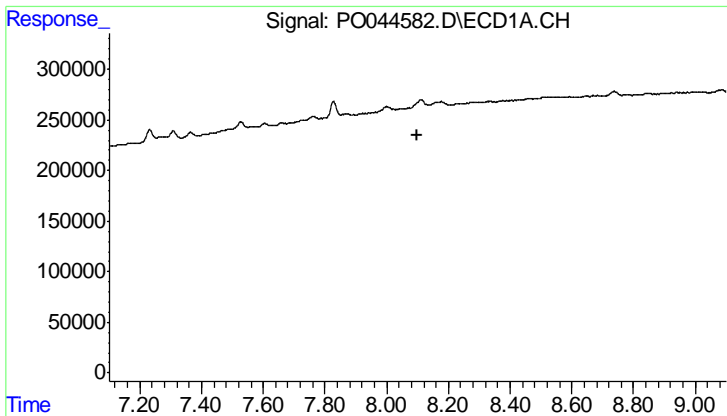
R.T.: 7.828 min  
 Delta R.T.: -0.002 min  
 Response: 167213  
 Conc: 6.78 ng/ml



#40 AR-1262-5

R.T.: 6.755 min  
 Delta R.T.: 0.000 min  
 Response: 243753  
 Conc: 5.37 ng/ml

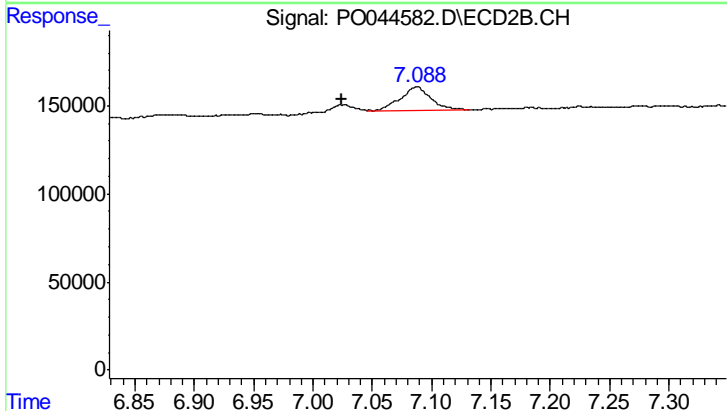




#41 AR-1268-1

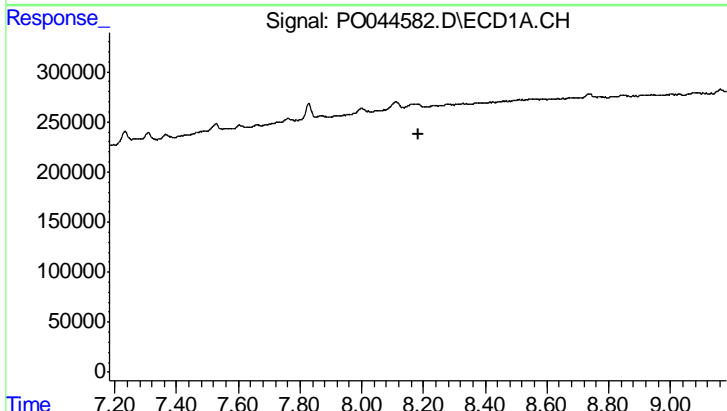
R.T.: 0.000 min  
 Exp R.T.: 8.101 min  
 Response: 0  
 Conc: N.D.

Instrument :  
 ECD\_O  
 ClientSampleId :  
 BS-OILY-STONE-RO-208



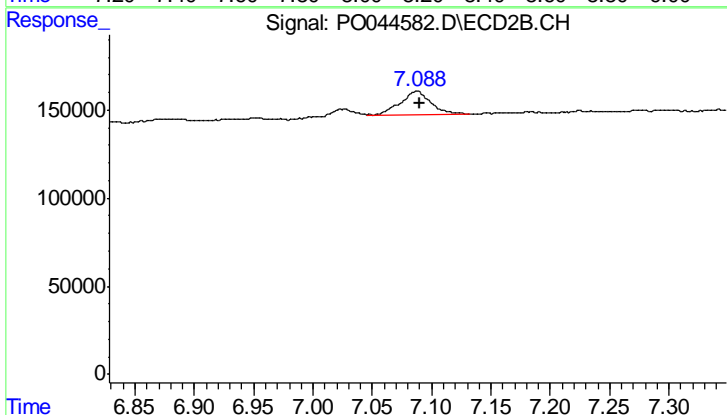
#41 AR-1268-1

R.T.: 7.088 min  
 Delta R.T.: 0.064 min  
 Response: 237449  
 Conc: 5.22 ng/ml



#42 AR-1268-2

R.T.: 0.000 min  
 Exp R.T.: 8.182 min  
 Response: 0  
 Conc: N.D.



#42 AR-1268-2

R.T.: 7.088 min  
 Delta R.T.: -0.003 min  
 Response: 237449  
 Conc: 5.83 ng/ml