

Data Path : Z:\pestpcbsrv\HPCHEM1\ECD\_0\Data\P0051119\  
 Data File : P0056111.D  
 Signal(s) : Signal #1: ECD1A.CH Signal #2: ECD2B.CH  
 Acq On : 11 May 2019 19:22  
 Operator : SM/SJ  
 Sample : AR1660CCC500  
 Misc :  
 ALS Vial : 3 Sample Multiplier: 1

Instrument :  
 ECD\_0  
 ClientSampleId :

Integration File signal 1: autoint1.e  
 Integration File signal 2: autoint2.e  
 Quant Time: May 11 23:53:02 2019  
 Quant Method : Z:\pestpcbsrv\HPCHEM1\ECD\_0\methods\P0050319.M  
 Quant Title : GC EXTRACTABLES  
 QLast Update : Fri May 03 15:20:04 2019  
 Response via : Initial Calibration  
 Integrator: ChemStation 6890 Scale Mode: Small noise peaks clipped

Volume Inj. : 2 µl  
 Signal #1 Phase : ZB-MR1 Signal #2 Phase: ZB-MR2  
 Signal #1 Info : 30Mx0.32mmx 0.50µ Signal #2 Info : 30M x 0.32mm x 0.25µm

Compound	RT#1	RT#2	Resp#1	Resp#2	ng/ml	ng/ml
System Monitoring Compounds						
1) SA Tetrachlo...	4.265	3.582	1799929	1661959	60.147	58.844
2) SA Decachlor...	9.855	8.526	2029970	1422832	54.253	52.614
Target Compounds						
3) L1 AR-1016-1	5.448	4.671	1129320	971201	794.670	722.667
4) L1 AR-1016-2	5.448	4.671	1129320	971201	570.689	531.888
5) L1 AR-1016-3	5.509	4.845	699870	540666	546.031	539.517
6) L1 AR-1016-4	5.608	4.885	585440	428793	560.107	527.009
7) L1 AR-1016-5	5.899	5.096	604149	561568	536.297	510.118
8) L2 AR-1221-1	4.471	3.791	62070	53476	142.772	145.655
9) L2 AR-1221-2	4.562	3.877	90987	83706	271.331	301.807
10) L2 AR-1221-3	4.637	3.952	356680	309964	354.698	348.861
11) L3 AR-1232-1	4.637	3.952	356680	309964	415.274	418.826
12) L3 AR-1232-2	5.161	4.671	521423	971201	1074.841	1108.109
13) L3 AR-1232-3	5.448	4.845	1129320	540666	1167.274	1127.163
14) L3 AR-1232-4	5.608	4.927	585440	519035	1151.217	1221.940
15) L3 AR-1232-5	5.697	5.096	534816	561568	1231.801	1158.812
16) L4 AR-1242-1	5.448	4.671	1129320	971201	932.710	866.663
17) L4 AR-1242-2	5.448	4.671	1129320	971201	668.872	638.340
18) L4 AR-1242-3	5.509	4.845	699870	540666	638.834	624.315
19) L4 AR-1242-4	5.608	4.927	585440	519035	650.618	619.594
20) L4 AR-1242-5	6.339	5.445	107910	442875	98.640	368.941 #
21) L5 AR-1248-1	5.448	4.671	1129320	971201	1247.703	1158.220
22) L5 AR-1248-2	5.697	4.885	534816	428793	401.026	390.250
23) L5 AR-1248-3	5.899	4.927	604149	519035	409.113	457.241
24) L5 AR-1248-4	6.300	5.096	133632	561568	76.636	399.927 #
25) L5 AR-1248-5	6.339	5.486	107910	98034	64.604	65.456
26) L6 AR-1254-1	6.273	5.445	493449	442875	234.994	165.479 #
27) L6 AR-1254-2	6.489	5.590	492714	396606	148.460	162.364
28) L6 AR-1254-3	6.857	6.005	458741	791964	126.183	199.607 #
29) L6 AR-1254-4	7.139	6.219	233892	128846	85.968	48.056 #
30) L6 AR-1254-5	7.556	6.632	1543129	1345332	538.403	371.774 #
31) L7 AR-1260-1	7.016	6.120	1125780	1016078	521.316	461.186
32) L7 AR-1260-2	7.273	6.306	1339542	601597	511.493	197.014 #
33) L7 AR-1260-3	7.630	6.459	1018428	523440	509.217	210.046 #
34) L7 AR-1260-4	7.854	6.927	1162000	969959	502.464	470.062
35) L7 AR-1260-5	8.163	7.168	2196862	2324654	517.845	462.869
36) L8 AR-1262-1	7.630	6.668	1018428	1153635	317.678	281.320
37) L8 AR-1262-2	8.163	7.168	2196862	2324654	409.197	371.776
38) L8 AR-1262-3	8.473	7.448	1441386	551976	397.201	224.110 #
39) L8 AR-1262-4	8.526	7.512	911745	1581986	335.806	386.326
40) L8 AR-1262-5	9.161	8.005	623358	570233	345.061	334.617
41) L9 AR-1268-1	8.473	7.448	1441386	551976	238.685	79.665 #

Data Path : Z:\pestpcbsrv\HPCHEM1\ECD\_0\Data\P0051119\  
 Data File : P0056111.D  
 Signal(s) : Signal #1: ECD1A.CH Signal #2: ECD2B.CH  
 Acq On : 11 May 2019 19:22  
 Operator : SM/SJ  
 Sample : AR1660CCC500  
 Misc :  
 ALS Vial : 3 Sample Multiplier: 1

Instrument :  
 ECD\_0  
 ClientSampleId :

Integration File signal 1: autoint1.e  
 Integration File signal 2: autoint2.e  
 Quant Time: May 11 23:53:02 2019  
 Quant Method : Z:\pestpcbsrv\HPCHEM1\ECD\_0\methods\P0050319.M  
 Quant Title : GC EXTRACTABLES  
 QLast Update : Fri May 03 15:20:04 2019  
 Response via : Initial Calibration  
 Integrator: ChemStation 6890 Scale Mode: Small noise peaks clipped

Volume Inj. : 2 µl  
 Signal #1 Phase : ZB-MR1 Signal #2 Phase: ZB-MR2  
 Signal #1 Info : 30Mx0.32mmx 0.50µ Signal #2 Info : 30M x 0.32mm x 0.25µm

	Compound	RT#1	RT#2	Resp#1	Resp#2	ng/ml	ng/ml
42)	L9 AR-1268-2	8.526	7.512	911745	1581986	166.568	278.070 #
43)	L9 AR-1268-3	8.755	7.716	37390	32272	8.290	6.833
44)	L9 AR-1268-4	9.161	8.005	623358	570233	317.683	301.439
45)	L9 AR-1268-5	9.545	8.283	181293	147937	13.438	12.148

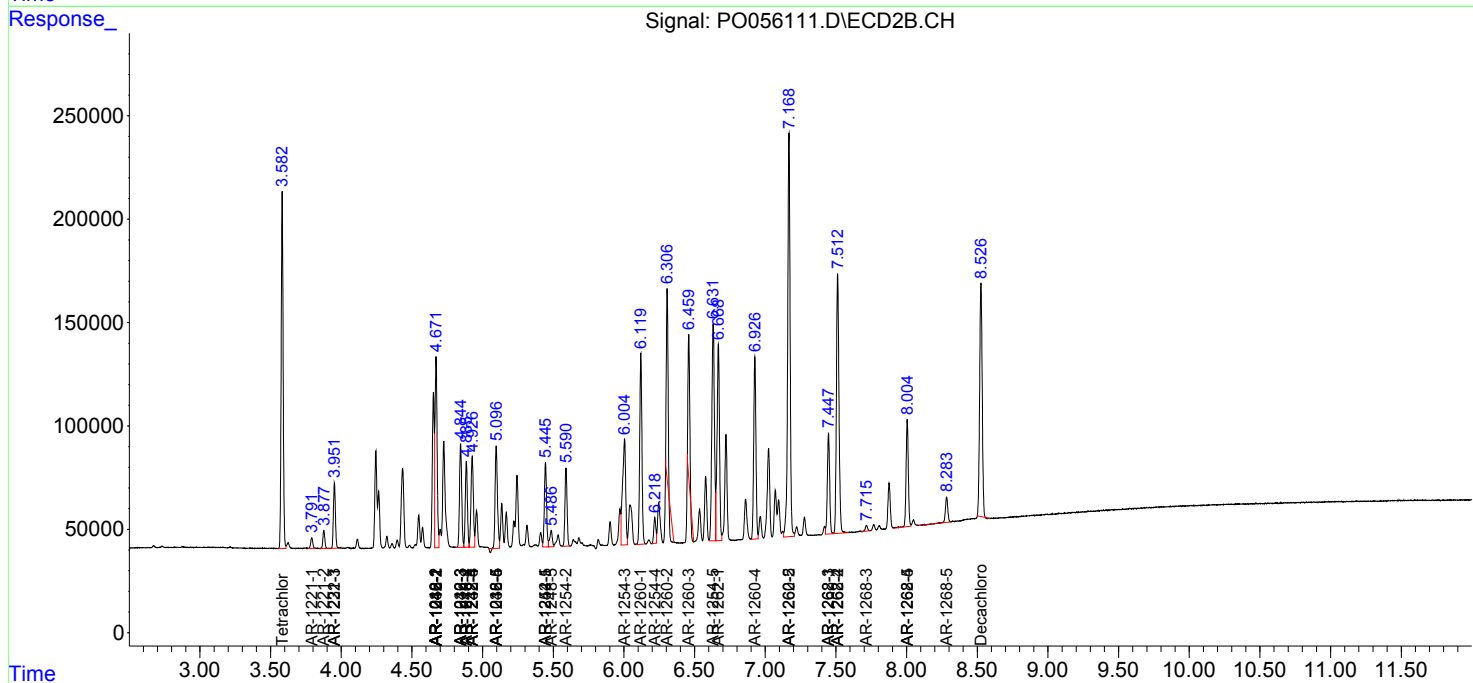
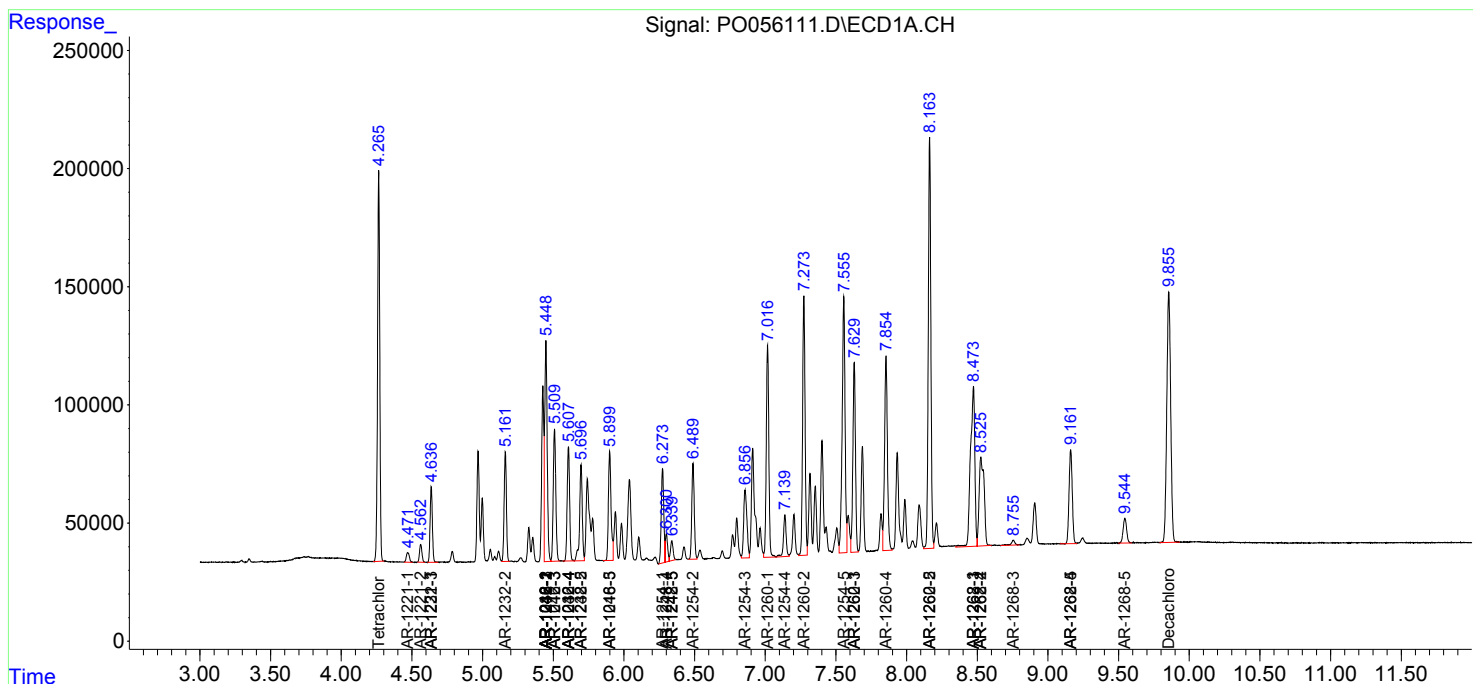
(f)=RT Delta > 1/2 Window (#)=Amounts differ by > 25% (m)=manual int.

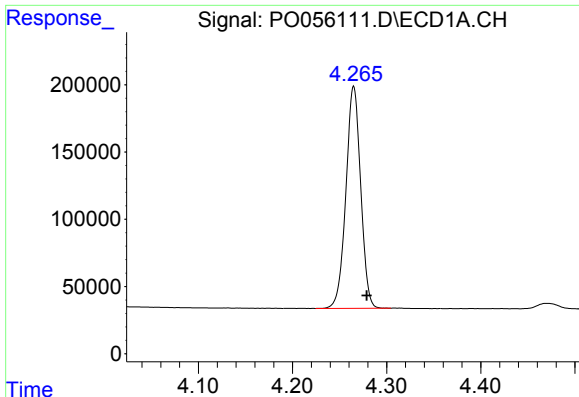
Data Path : Z:\pestpcbsrv\HPCHEM1\ECD\_O\Data\P0051119\  
 Data File : P0056111.D  
 Signal(s) : Signal #1: ECD1A.CH Signal #2: ECD2B.CH  
 Acq On : 11 May 2019 19:22  
 Operator : SM/SJ  
 Sample : AR1660CCC500  
 Misc :  
 ALS Vial : 3 Sample Multiplier: 1

Instrument :  
 ECD\_O  
 ClientSampled :

Integration File signal 1: autoint1.e  
 Integration File signal 2: autoint2.e  
 Quant Time: May 11 23:53:02 2019  
 Quant Method : Z:\pestpcbsrv\HPCHEM1\ECD\_O\methods\P0050319.M  
 Quant Title : GC EXTRACTABLES  
 QLast Update : Fri May 03 15:20:04 2019  
 Response via : Initial Calibration  
 Integrator: ChemStation 6890 Scale Mode: Small noise peaks clipped

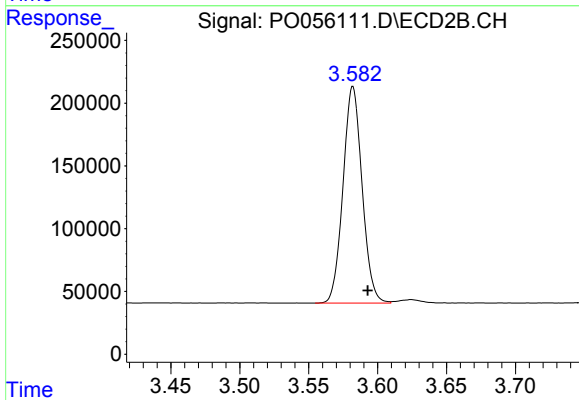
Volume Inj. : 2 µl  
 Signal #1 Phase : ZB-MR1 Signal #2 Phase: ZB-MR2  
 Signal #1 Info : 30Mx0.32mmx 0.50µ Signal #2 Info : 30M x 0.32mm x 0.25µm



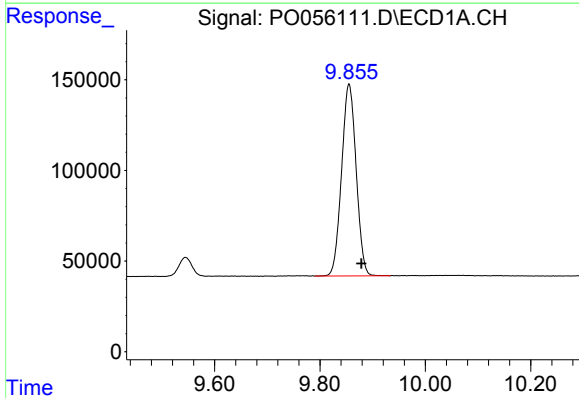


#1 Tetrachloro-m-xylene  
 R.T.: 4.265 min  
 Delta R.T.: -0.014 min  
 Response: 1799929  
 Conc: 60.15 ng/ml

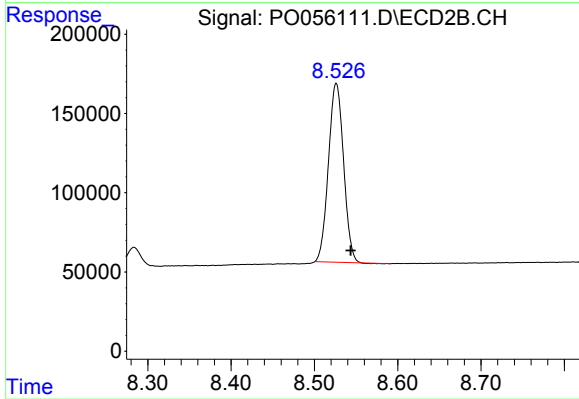
Instrument :  
 ECD\_O  
 ClientSampleId :



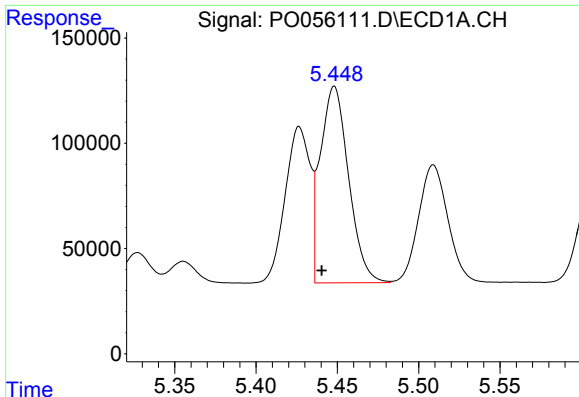
#1 Tetrachloro-m-xylene  
 R.T.: 3.582 min  
 Delta R.T.: -0.011 min  
 Response: 1661959  
 Conc: 58.84 ng/ml



#2 Decachlorobiphenyl  
 R.T.: 9.855 min  
 Delta R.T.: -0.024 min  
 Response: 2029970  
 Conc: 54.25 ng/ml

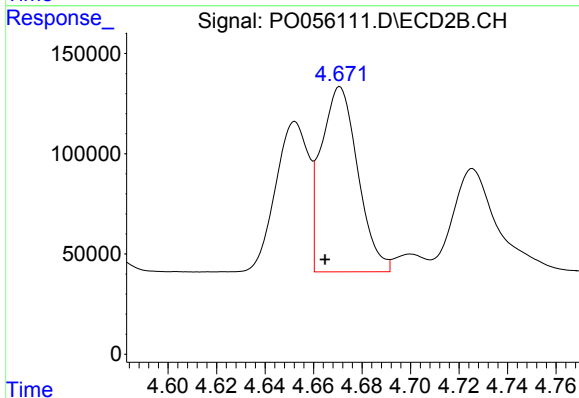


#2 Decachlorobiphenyl  
 R.T.: 8.526 min  
 Delta R.T.: -0.017 min  
 Response: 1422832  
 Conc: 52.61 ng/ml

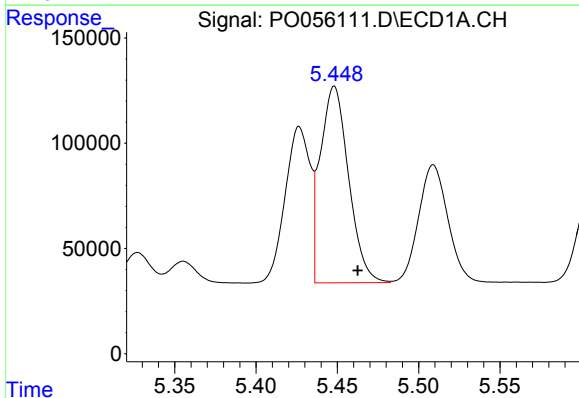


#3 AR-1016-1  
 R.T.: 5.448 min  
 Delta R.T.: 0.008 min  
 Response: 1129320  
 Conc: 794.67 ng/ml

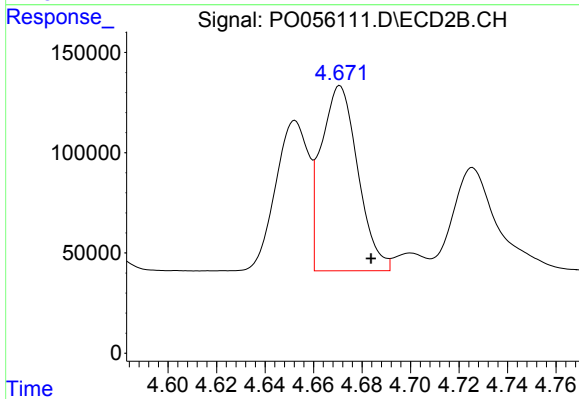
Instrument :  
 ECD\_O  
 ClientSampled :



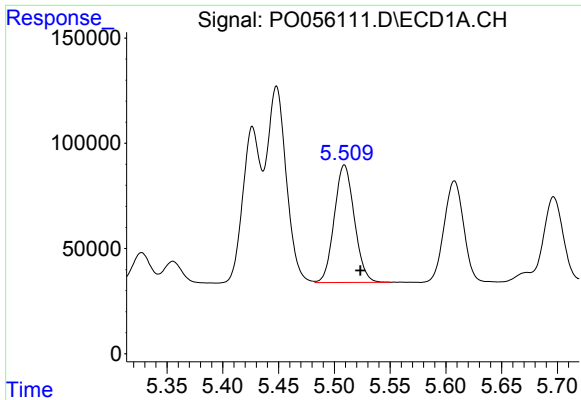
#3 AR-1016-1  
 R.T.: 4.671 min  
 Delta R.T.: 0.006 min  
 Response: 971201  
 Conc: 722.67 ng/ml



#4 AR-1016-2  
 R.T.: 5.448 min  
 Delta R.T.: -0.014 min  
 Response: 1129320  
 Conc: 570.69 ng/ml

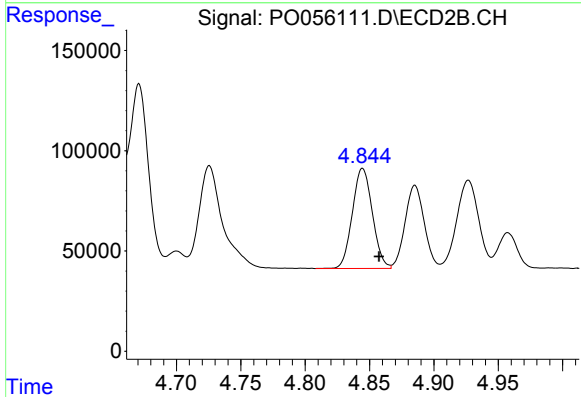


#4 AR-1016-2  
 R.T.: 4.671 min  
 Delta R.T.: -0.013 min  
 Response: 971201  
 Conc: 531.89 ng/ml

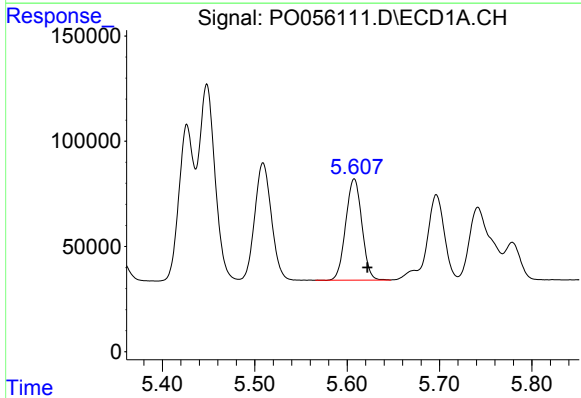


#5 AR-1016-3  
 R.T.: 5.509 min  
 Delta R.T.: -0.015 min  
 Response: 699870  
 Conc: 546.03 ng/ml

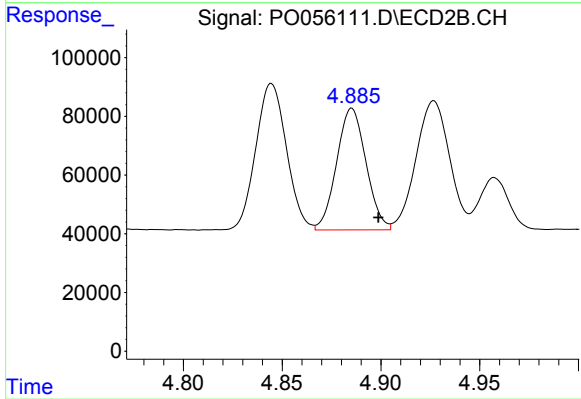
Instrument :  
 ECD\_O  
 ClientSampled :



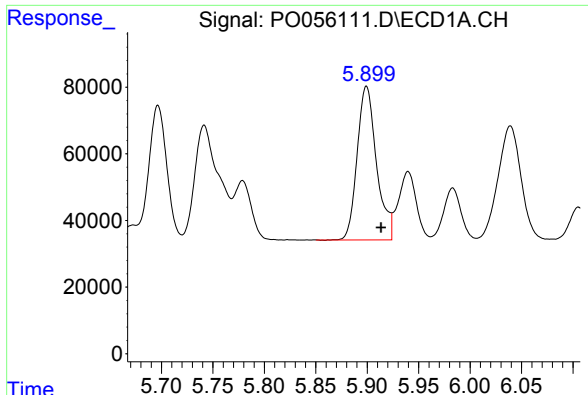
#5 AR-1016-3  
 R.T.: 4.845 min  
 Delta R.T.: -0.013 min  
 Response: 540666  
 Conc: 539.52 ng/ml



#6 AR-1016-4  
 R.T.: 5.608 min  
 Delta R.T.: -0.014 min  
 Response: 585440  
 Conc: 560.11 ng/ml



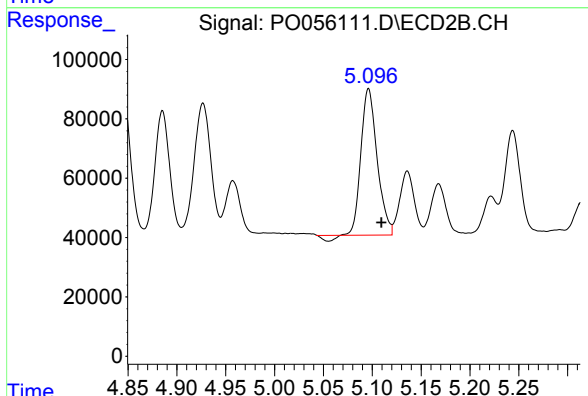
#6 AR-1016-4  
 R.T.: 4.885 min  
 Delta R.T.: -0.013 min  
 Response: 428793  
 Conc: 527.01 ng/ml



#7 AR-1016-5

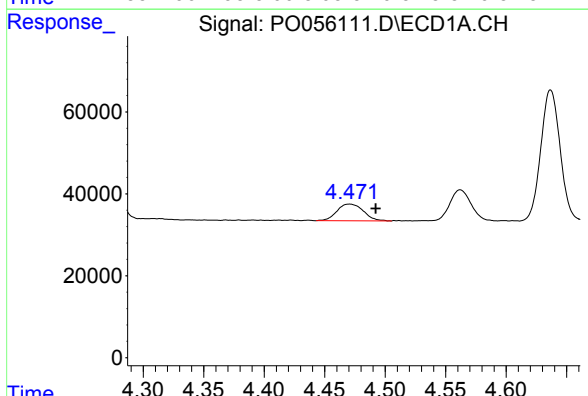
R.T.: 5.899 min  
 Delta R.T.: -0.014 min  
 Response: 604149  
 Conc: 536.30 ng/ml

Instrument :  
 ECD\_O  
 ClientSampled :



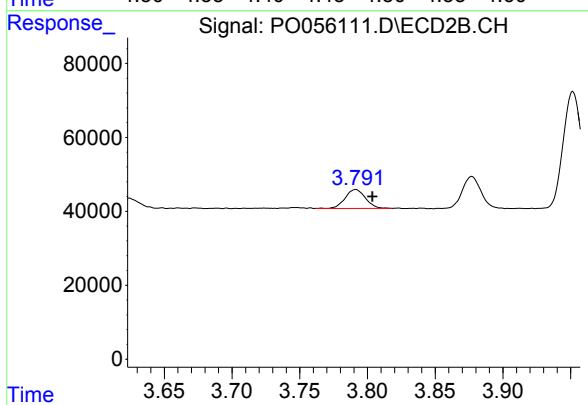
#7 AR-1016-5

R.T.: 5.096 min  
 Delta R.T.: -0.013 min  
 Response: 561568  
 Conc: 510.12 ng/ml



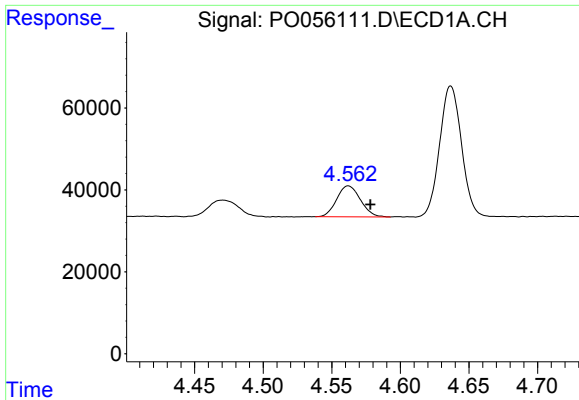
#8 AR-1221-1

R.T.: 4.471 min  
 Delta R.T.: -0.021 min  
 Response: 62070  
 Conc: 142.77 ng/ml



#8 AR-1221-1

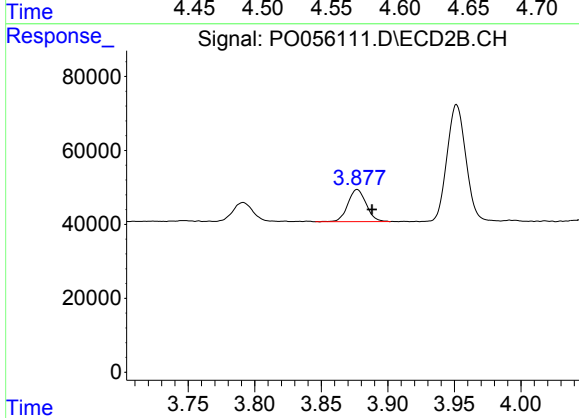
R.T.: 3.791 min  
 Delta R.T.: -0.012 min  
 Response: 53476  
 Conc: 145.66 ng/ml



#9 AR-1221-2

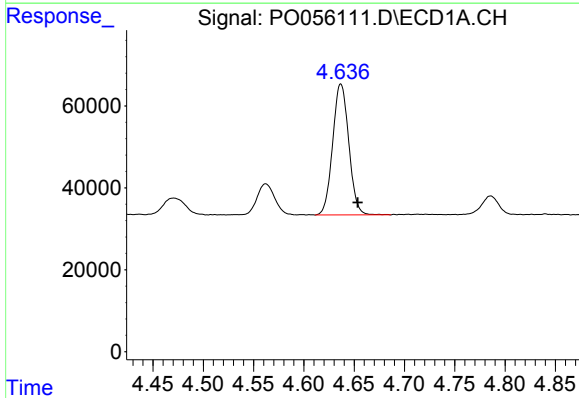
R.T.: 4.562 min  
Delta R.T.: -0.016 min  
Response: 90987  
Conc: 271.33 ng/ml

Instrument :  
ECD\_O  
ClientSampleId :



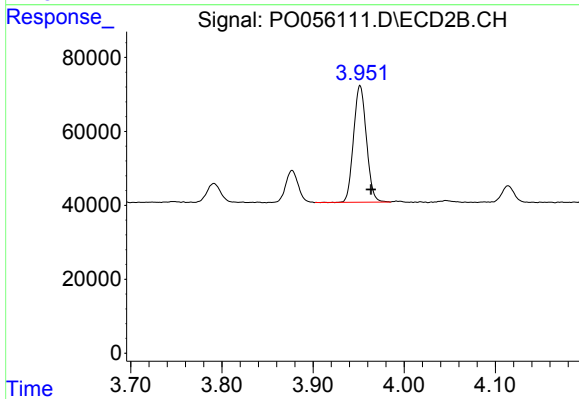
#9 AR-1221-2

R.T.: 3.877 min  
Delta R.T.: -0.011 min  
Response: 83706  
Conc: 301.81 ng/ml



#10 AR-1221-3

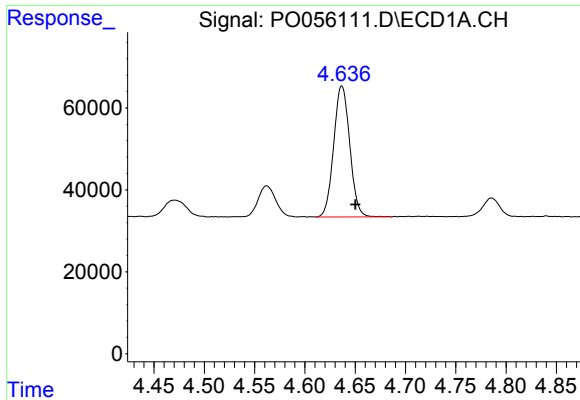
R.T.: 4.637 min  
Delta R.T.: -0.017 min  
Response: 356680  
Conc: 354.70 ng/ml



#10 AR-1221-3

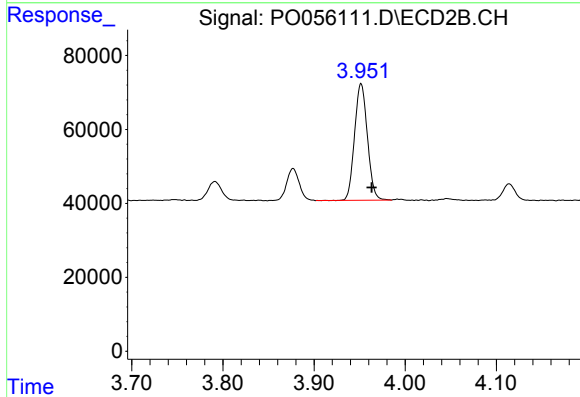
R.T.: 3.952 min  
Delta R.T.: -0.012 min  
Response: 309964  
Conc: 348.86 ng/ml



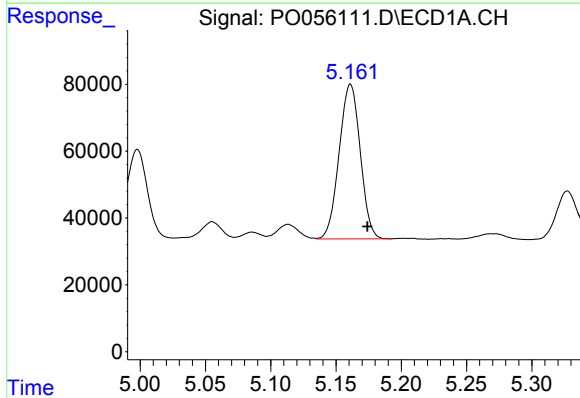


#11 AR-1232-1  
 R.T.: 4.637 min  
 Delta R.T.: -0.013 min  
 Response: 356680  
 Conc: 415.27 ng/ml

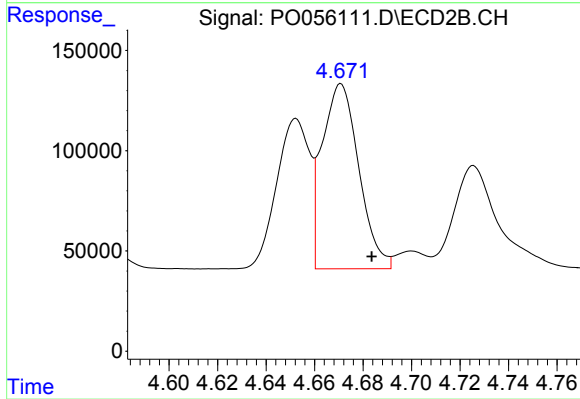
Instrument :  
 ECD\_O  
 ClientSampleId :



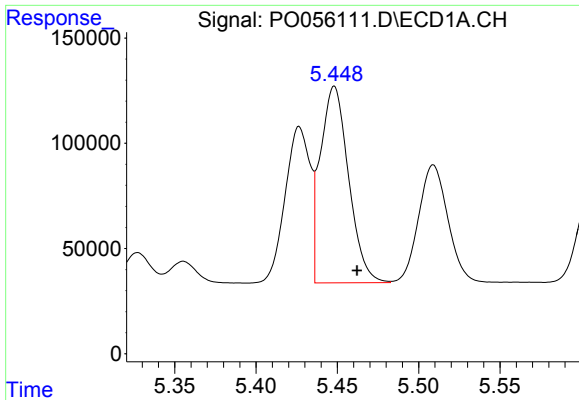
#11 AR-1232-1  
 R.T.: 3.952 min  
 Delta R.T.: -0.012 min  
 Response: 309964  
 Conc: 418.83 ng/ml



#12 AR-1232-2  
 R.T.: 5.161 min  
 Delta R.T.: -0.013 min  
 Response: 521423  
 Conc: 1074.84 ng/ml

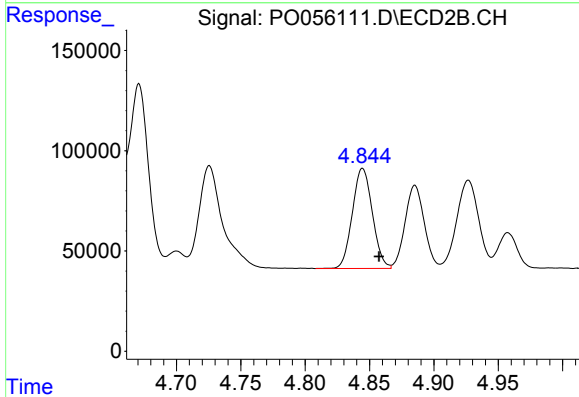


#12 AR-1232-2  
 R.T.: 4.671 min  
 Delta R.T.: -0.013 min  
 Response: 971201  
 Conc: 1108.11 ng/ml

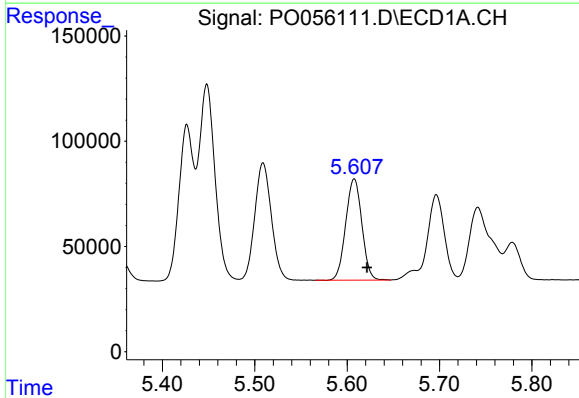


#13 AR-1232-3  
 R.T.: 5.448 min  
 Delta R.T.: -0.014 min  
 Response: 1129320  
 Conc: 1167.27 ng/ml

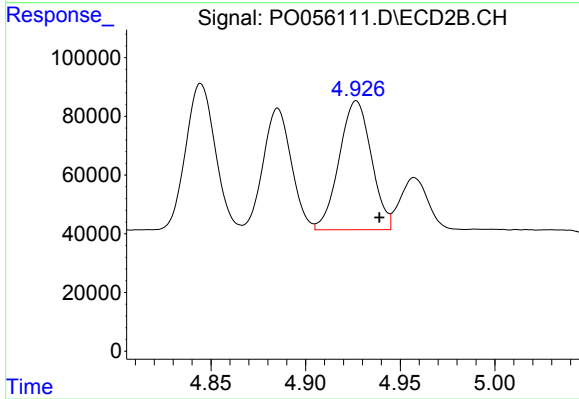
Instrument :  
 ECD\_O  
 ClientSampleId :



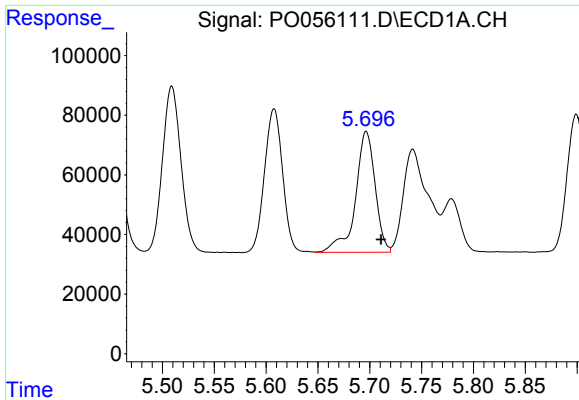
#13 AR-1232-3  
 R.T.: 4.845 min  
 Delta R.T.: -0.013 min  
 Response: 540666  
 Conc: 1127.16 ng/ml



#14 AR-1232-4  
 R.T.: 5.608 min  
 Delta R.T.: -0.014 min  
 Response: 585440  
 Conc: 1151.22 ng/ml

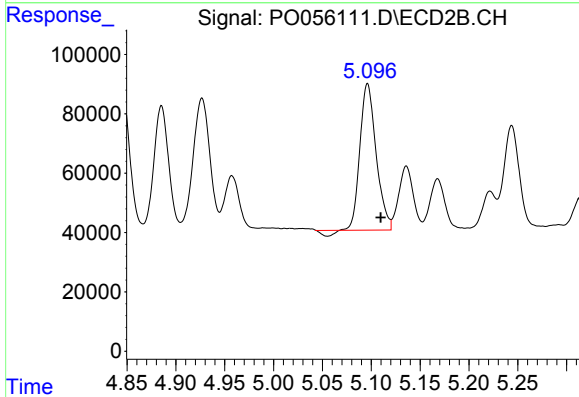


#14 AR-1232-4  
 R.T.: 4.927 min  
 Delta R.T.: -0.012 min  
 Response: 519035  
 Conc: 1221.94 ng/ml

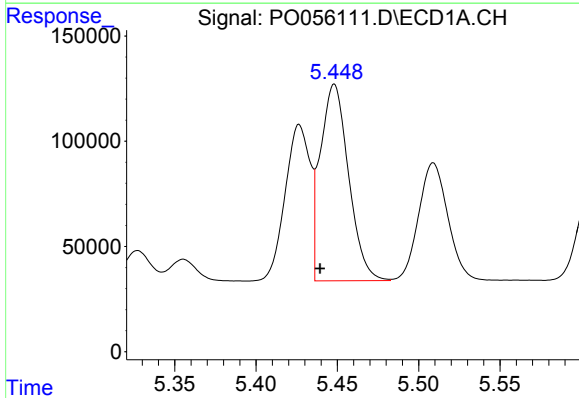


#15 AR-1232-5  
 R.T.: 5.697 min  
 Delta R.T.: -0.014 min  
 Response: 534816  
 Conc: 1231.80 ng/ml

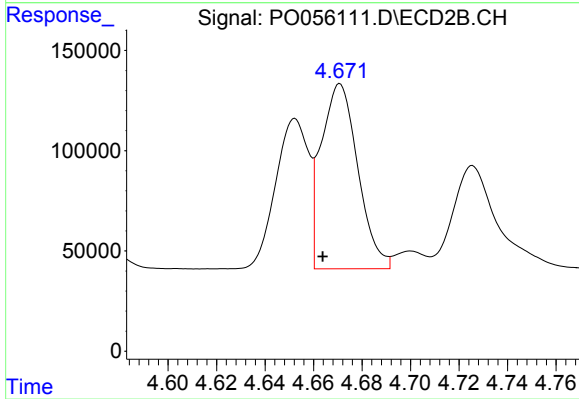
Instrument :  
 ECD\_O  
 ClientSampleId :



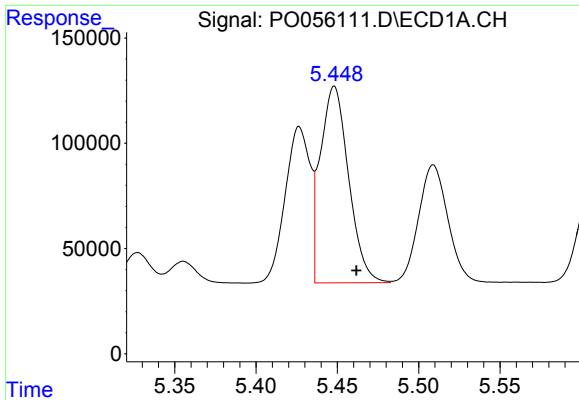
#15 AR-1232-5  
 R.T.: 5.096 min  
 Delta R.T.: -0.013 min  
 Response: 561568  
 Conc: 1158.81 ng/ml



#16 AR-1242-1  
 R.T.: 5.448 min  
 Delta R.T.: 0.009 min  
 Response: 1129320  
 Conc: 932.71 ng/ml



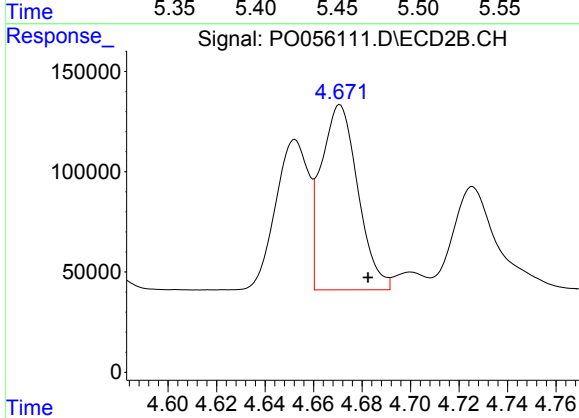
#16 AR-1242-1  
 R.T.: 4.671 min  
 Delta R.T.: 0.007 min  
 Response: 971201  
 Conc: 866.66 ng/ml



#17 AR-1242-2

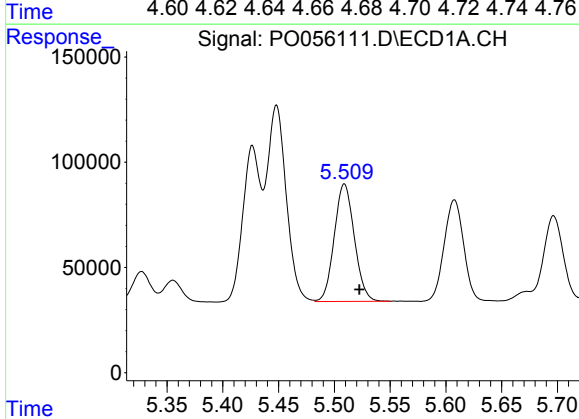
R.T.: 5.448 min  
 Delta R.T.: -0.014 min  
 Response: 1129320  
 Conc: 668.87 ng/ml

Instrument :  
 ECD\_O  
 ClientSampled :



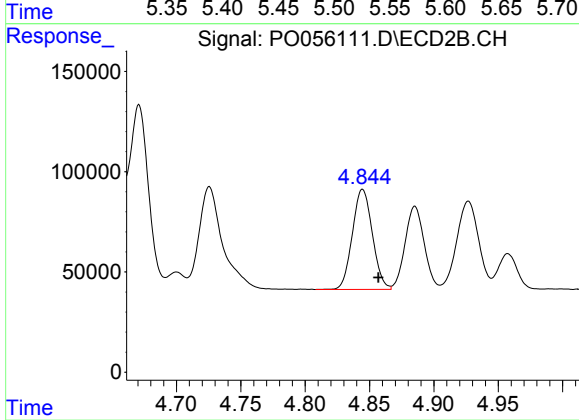
#17 AR-1242-2

R.T.: 4.671 min  
 Delta R.T.: -0.012 min  
 Response: 971201  
 Conc: 638.34 ng/ml



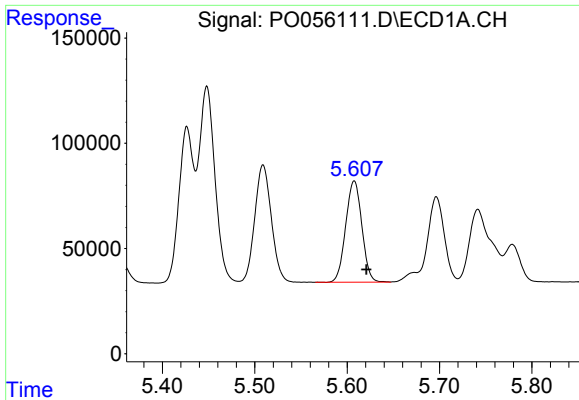
#18 AR-1242-3

R.T.: 5.509 min  
 Delta R.T.: -0.013 min  
 Response: 699870  
 Conc: 638.83 ng/ml



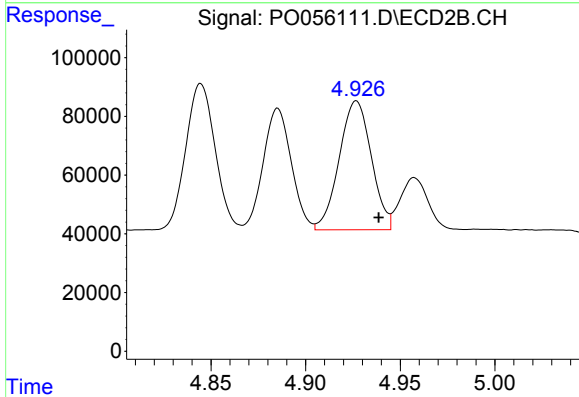
#18 AR-1242-3

R.T.: 4.845 min  
 Delta R.T.: -0.012 min  
 Response: 540666  
 Conc: 624.31 ng/ml

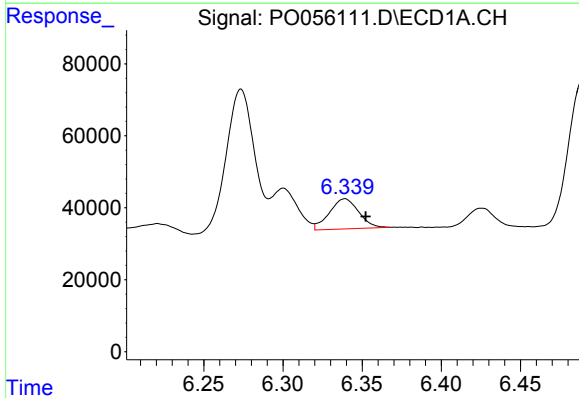


#19 AR-1242-4  
 R.T.: 5.608 min  
 Delta R.T.: -0.013 min  
 Response: 585440  
 Conc: 650.62 ng/ml

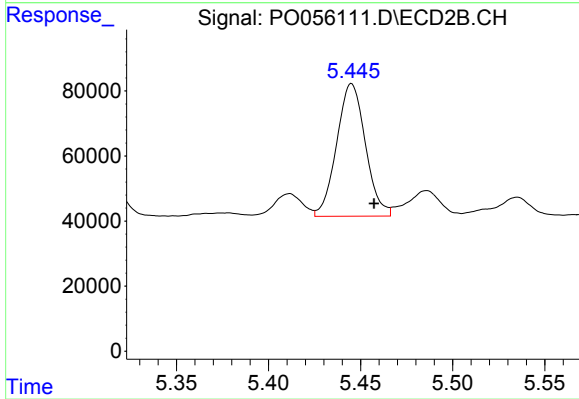
Instrument :  
 ECD\_O  
 ClientSampled :



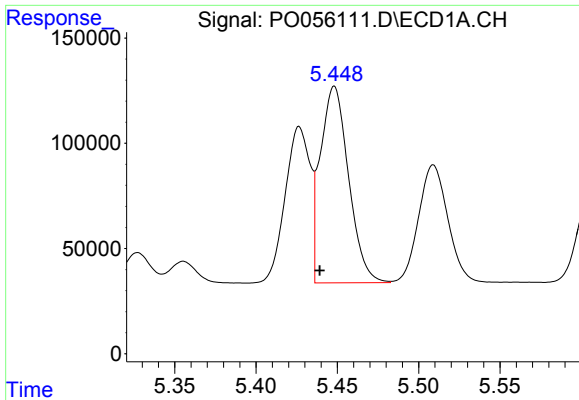
#19 AR-1242-4  
 R.T.: 4.927 min  
 Delta R.T.: -0.012 min  
 Response: 519035  
 Conc: 619.59 ng/ml



#20 AR-1242-5  
 R.T.: 6.339 min  
 Delta R.T.: -0.013 min  
 Response: 107910  
 Conc: 98.64 ng/ml

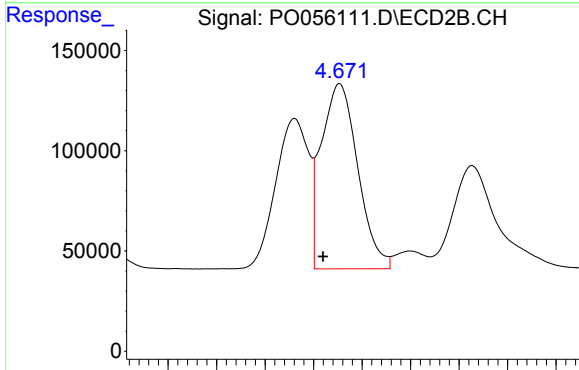


#20 AR-1242-5  
 R.T.: 5.445 min  
 Delta R.T.: -0.012 min  
 Response: 442875  
 Conc: 368.94 ng/ml

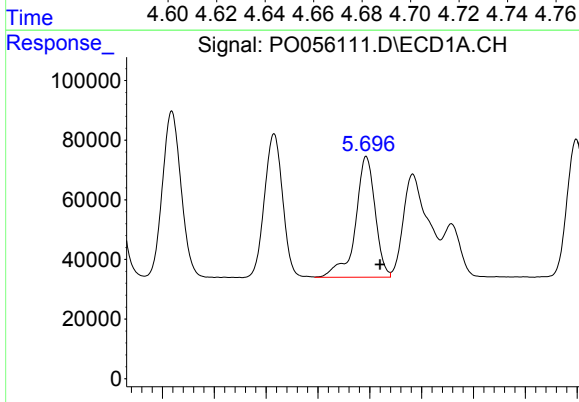


#21 AR-1248-1  
 R.T.: 5.448 min  
 Delta R.T.: 0.009 min  
 Response: 1129320  
 Conc: 1247.70 ng/ml

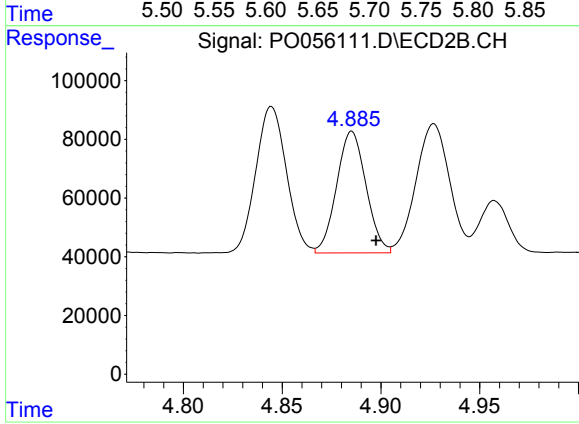
Instrument :  
 ECD\_O  
 ClientSampleId :



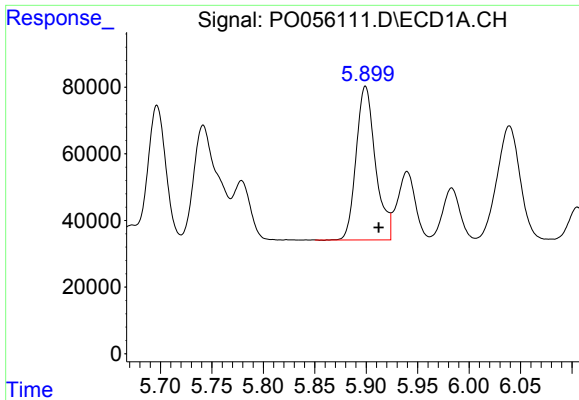
#21 AR-1248-1  
 R.T.: 4.671 min  
 Delta R.T.: 0.007 min  
 Response: 971201  
 Conc: 1158.22 ng/ml



#22 AR-1248-2  
 R.T.: 5.697 min  
 Delta R.T.: -0.013 min  
 Response: 534816  
 Conc: 401.03 ng/ml



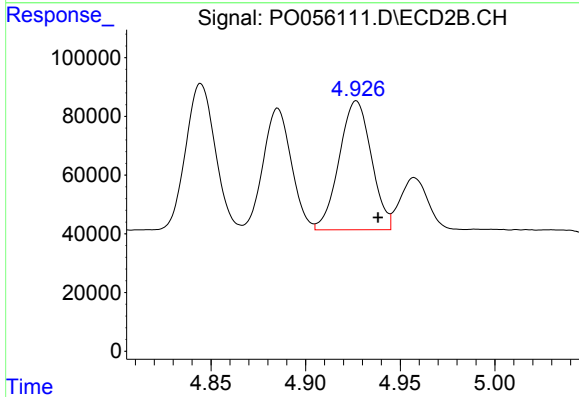
#22 AR-1248-2  
 R.T.: 4.885 min  
 Delta R.T.: -0.012 min  
 Response: 428793  
 Conc: 390.25 ng/ml



#23 AR-1248-3

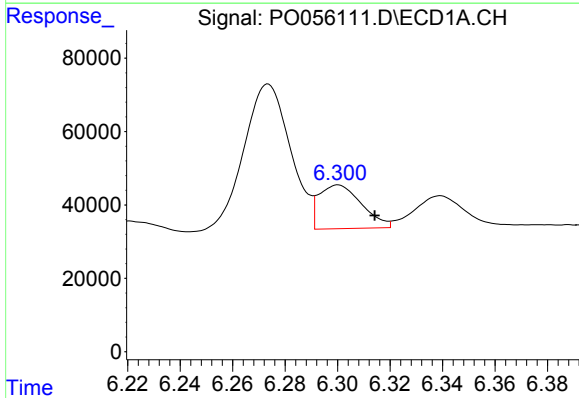
R.T.: 5.899 min  
 Delta R.T.: -0.013 min  
 Response: 604149  
 Conc: 409.11 ng/ml

Instrument :  
 ECD\_O  
 ClientSampleId :



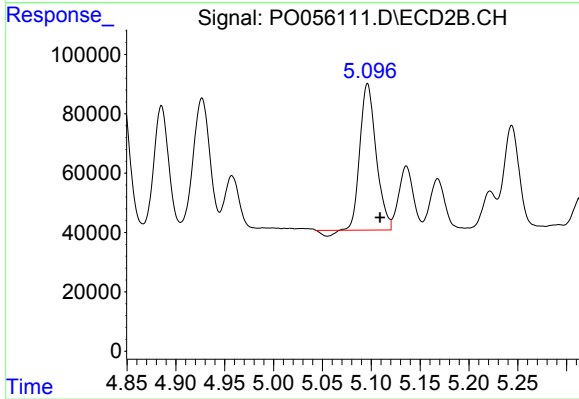
#23 AR-1248-3

R.T.: 4.927 min  
 Delta R.T.: -0.012 min  
 Response: 519035  
 Conc: 457.24 ng/ml



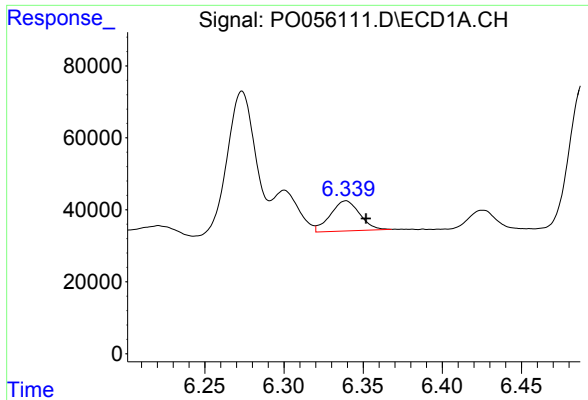
#24 AR-1248-4

R.T.: 6.300 min  
 Delta R.T.: -0.014 min  
 Response: 133632  
 Conc: 76.64 ng/ml



#24 AR-1248-4

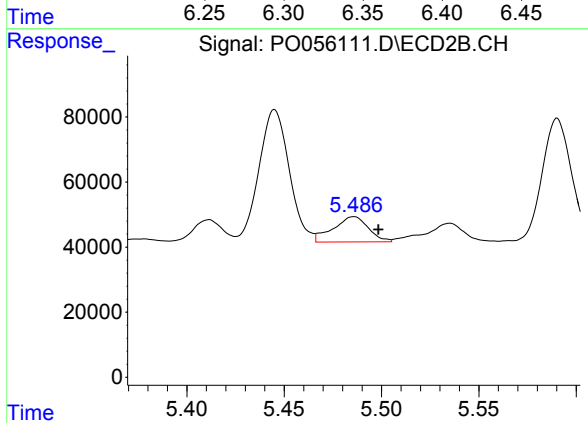
R.T.: 5.096 min  
 Delta R.T.: -0.013 min  
 Response: 561568  
 Conc: 399.93 ng/ml



#25 AR-1248-5

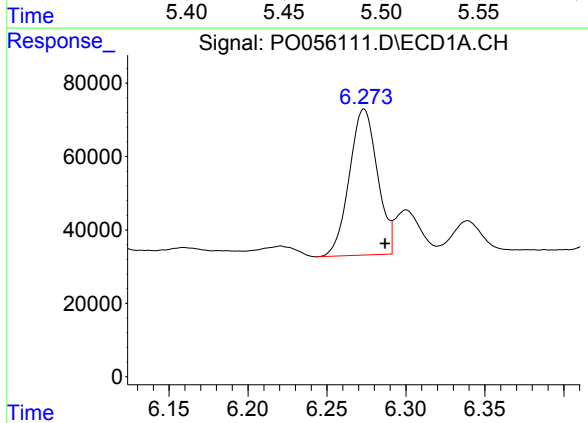
R.T.: 6.339 min  
 Delta R.T.: -0.013 min  
 Response: 107910  
 Conc: 64.60 ng/ml

Instrument :  
 ECD\_O  
 ClientSampleId :



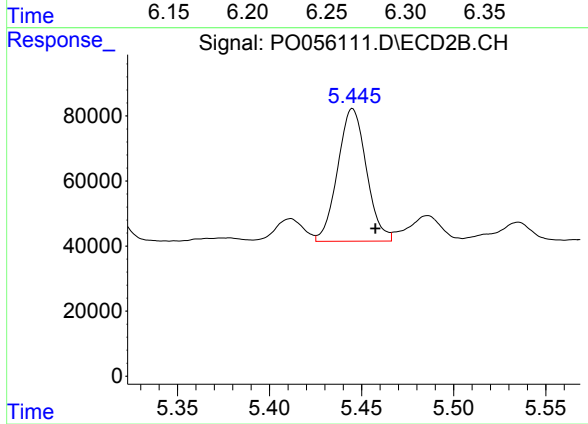
#25 AR-1248-5

R.T.: 5.486 min  
 Delta R.T.: -0.013 min  
 Response: 98034  
 Conc: 65.46 ng/ml



#26 AR-1254-1

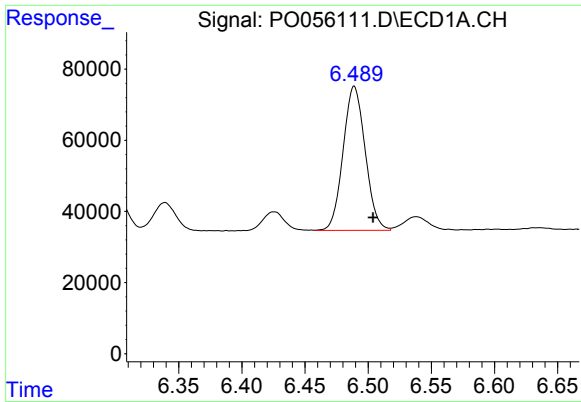
R.T.: 6.273 min  
 Delta R.T.: -0.013 min  
 Response: 493449  
 Conc: 234.99 ng/ml



#26 AR-1254-1

R.T.: 5.445 min  
 Delta R.T.: -0.012 min  
 Response: 442875  
 Conc: 165.48 ng/ml

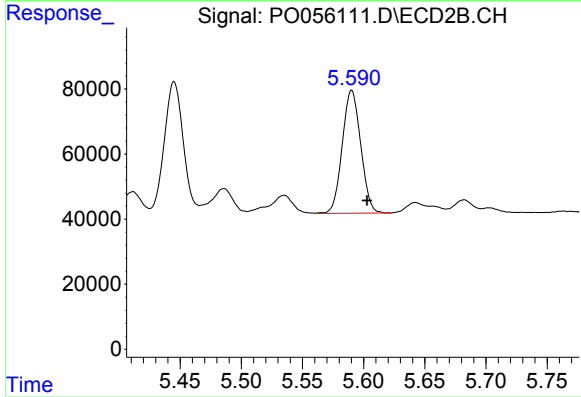




#27 AR-1254-2

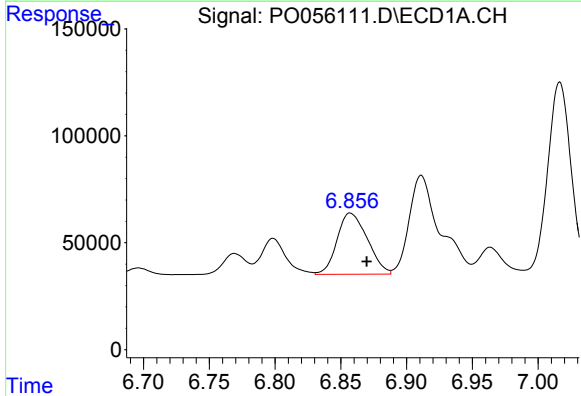
R.T.: 6.489 min  
 Delta R.T.: -0.015 min  
 Response: 492714  
 Conc: 148.46 ng/ml

Instrument :  
 ECD\_O  
 ClientSampleId :



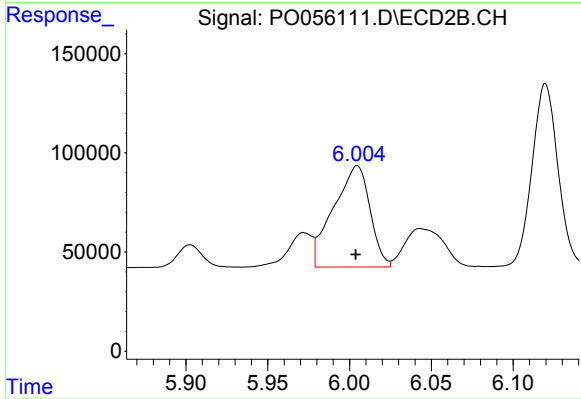
#27 AR-1254-2

R.T.: 5.590 min  
 Delta R.T.: -0.012 min  
 Response: 396606  
 Conc: 162.36 ng/ml



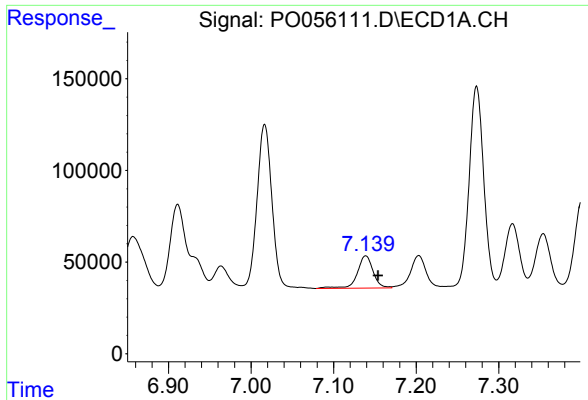
#28 AR-1254-3

R.T.: 6.857 min  
 Delta R.T.: -0.013 min  
 Response: 458741  
 Conc: 126.18 ng/ml



#28 AR-1254-3

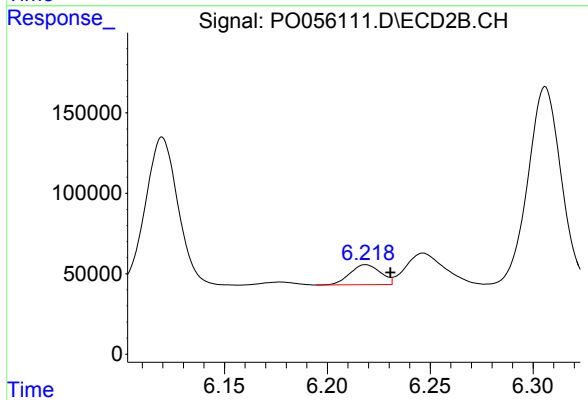
R.T.: 6.005 min  
 Delta R.T.: 0.000 min  
 Response: 791964  
 Conc: 199.61 ng/ml



#29 AR-1254-4

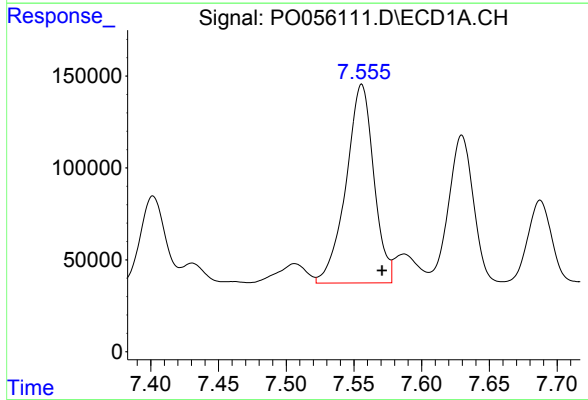
R.T.: 7.139 min  
 Delta R.T.: -0.015 min  
 Response: 233892  
 Conc: 85.97 ng/ml

Instrument :  
 ECD\_O  
 ClientSampleId :



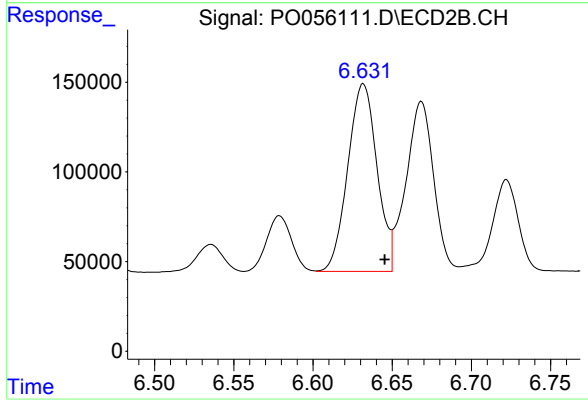
#29 AR-1254-4

R.T.: 6.219 min  
 Delta R.T.: -0.012 min  
 Response: 128846  
 Conc: 48.06 ng/ml



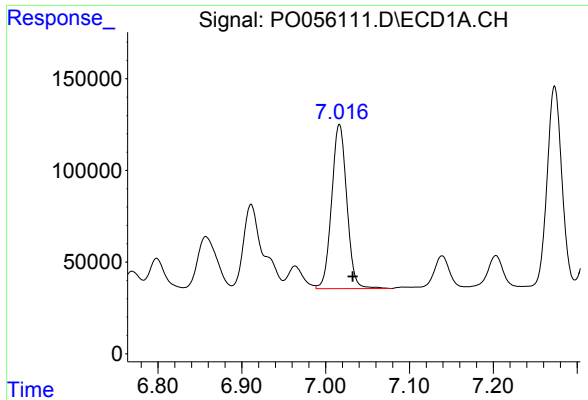
#30 AR-1254-5

R.T.: 7.556 min  
 Delta R.T.: -0.015 min  
 Response: 1543129  
 Conc: 538.40 ng/ml



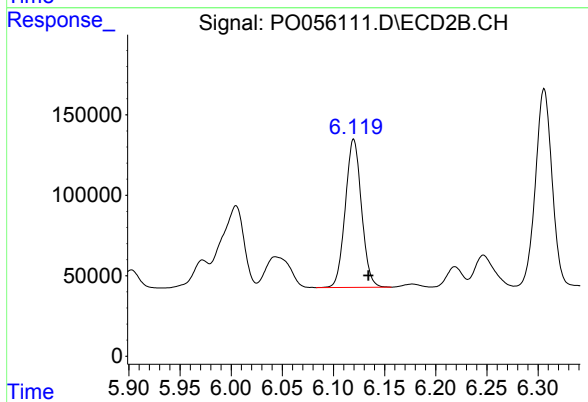
#30 AR-1254-5

R.T.: 6.632 min  
 Delta R.T.: -0.013 min  
 Response: 1345332  
 Conc: 371.77 ng/ml

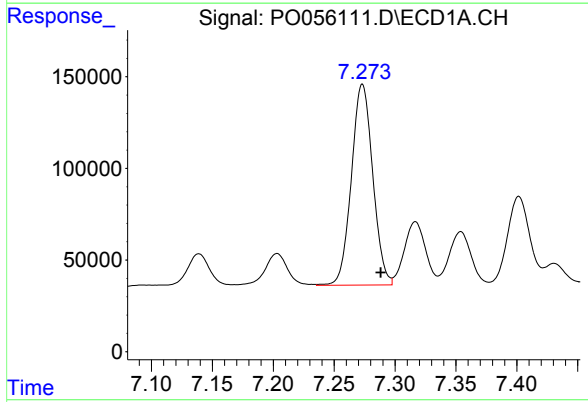


#31 AR-1260-1  
 R.T.: 7.016 min  
 Delta R.T.: -0.016 min  
 Response: 1125780  
 Conc: 521.32 ng/ml

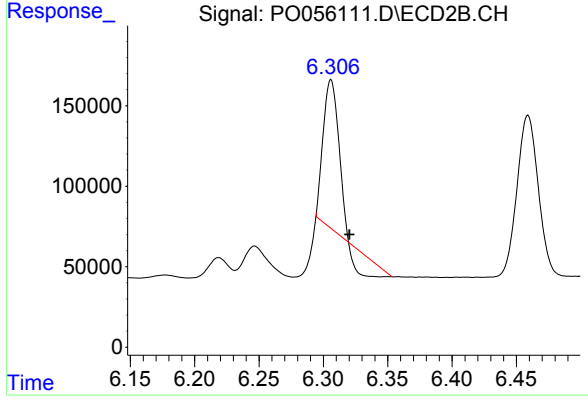
Instrument :  
 ECD\_O  
 ClientSampled :



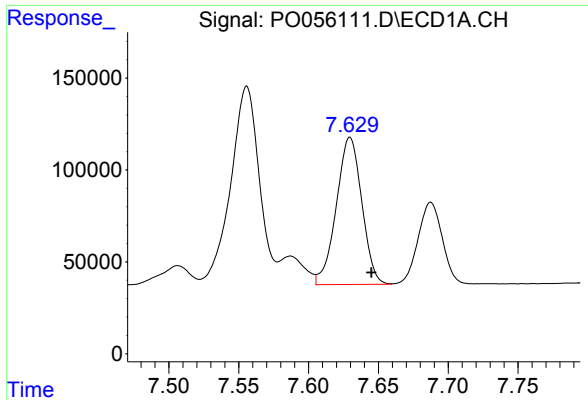
#31 AR-1260-1  
 R.T.: 6.120 min  
 Delta R.T.: -0.014 min  
 Response: 1016078  
 Conc: 461.19 ng/ml



#32 AR-1260-2  
 R.T.: 7.273 min  
 Delta R.T.: -0.015 min  
 Response: 1339542  
 Conc: 511.49 ng/ml



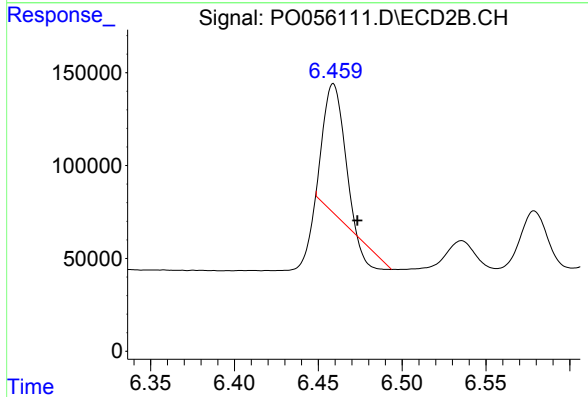
#32 AR-1260-2  
 R.T.: 6.306 min  
 Delta R.T.: -0.014 min  
 Response: 601597  
 Conc: 197.01 ng/ml



#33 AR-1260-3

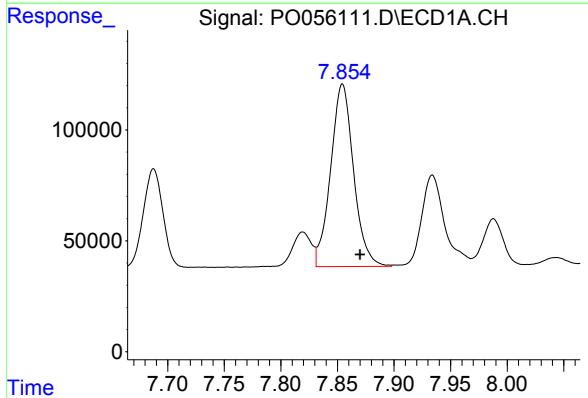
R.T.: 7.630 min  
 Delta R.T.: -0.015 min  
 Response: 1018428  
 Conc: 509.22 ng/ml

Instrument :  
 ECD\_O  
 ClientSampleId :



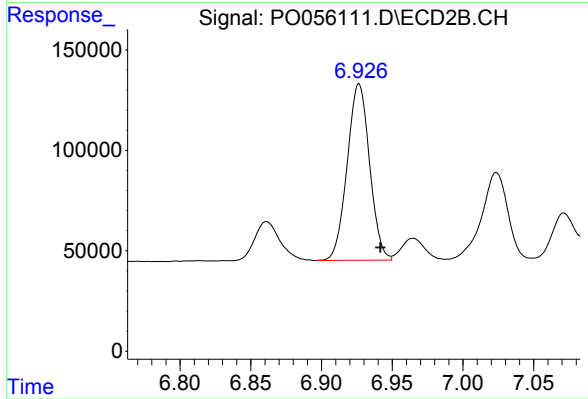
#33 AR-1260-3

R.T.: 6.459 min  
 Delta R.T.: -0.014 min  
 Response: 523440  
 Conc: 210.05 ng/ml



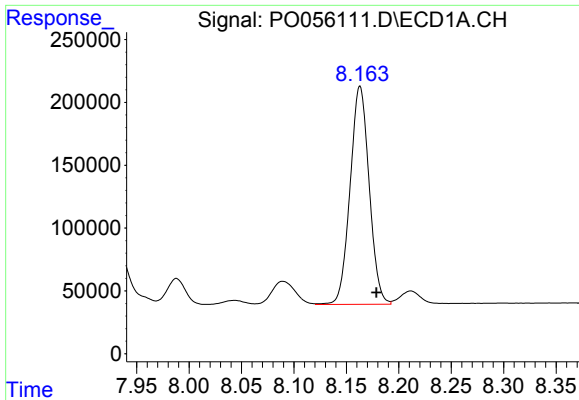
#34 AR-1260-4

R.T.: 7.854 min  
 Delta R.T.: -0.016 min  
 Response: 1162000  
 Conc: 502.46 ng/ml



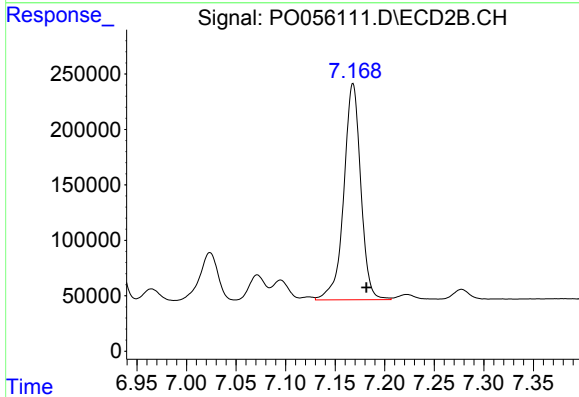
#34 AR-1260-4

R.T.: 6.927 min  
 Delta R.T.: -0.015 min  
 Response: 969959  
 Conc: 470.06 ng/ml

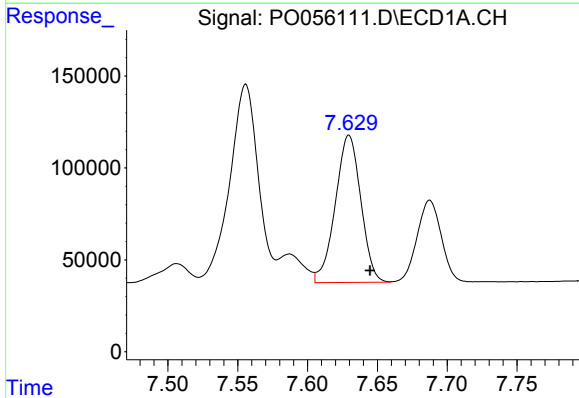


#35 AR-1260-5  
 R.T.: 8.163 min  
 Delta R.T.: -0.016 min  
 Response: 2196862  
 Conc: 517.84 ng/ml

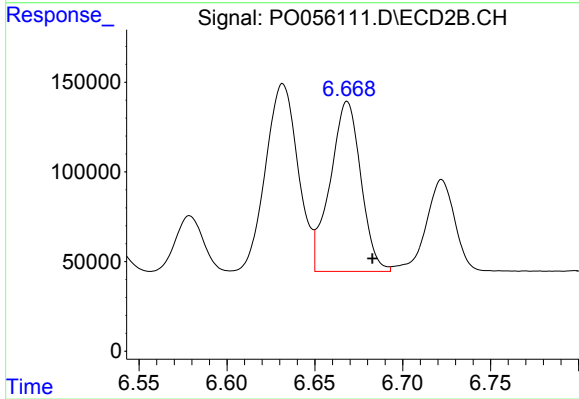
Instrument :  
 ECD\_O  
 ClientSampled :



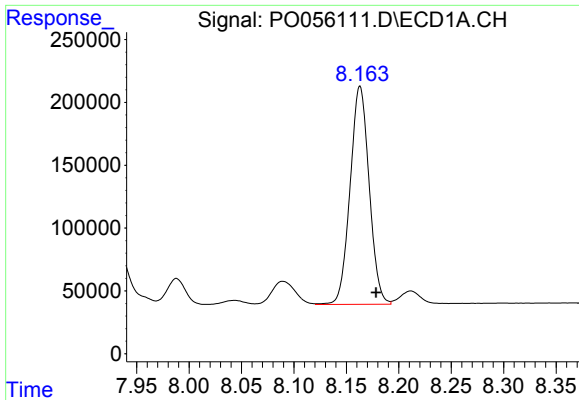
#35 AR-1260-5  
 R.T.: 7.168 min  
 Delta R.T.: -0.014 min  
 Response: 2324654  
 Conc: 462.87 ng/ml



#36 AR-1262-1  
 R.T.: 7.630 min  
 Delta R.T.: -0.015 min  
 Response: 1018428  
 Conc: 317.68 ng/ml



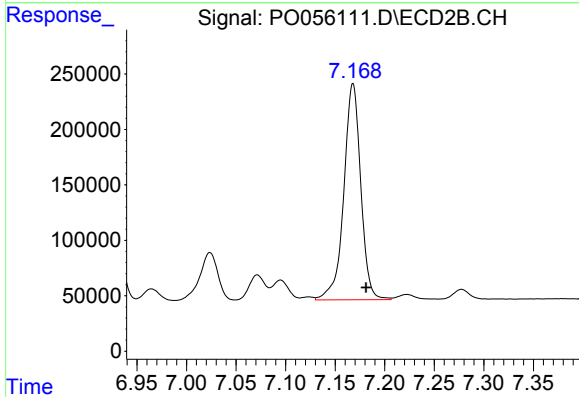
#36 AR-1262-1  
 R.T.: 6.668 min  
 Delta R.T.: -0.014 min  
 Response: 1153635  
 Conc: 281.32 ng/ml



#37 AR-1262-2

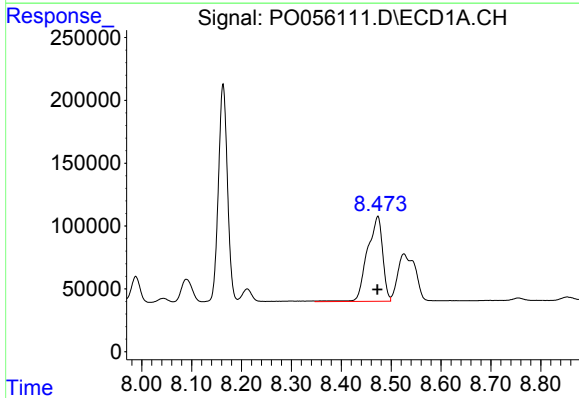
R.T.: 8.163 min  
 Delta R.T.: -0.015 min  
 Response: 2196862  
 Conc: 409.20 ng/ml

Instrument :  
 ECD\_O  
 ClientSampled :



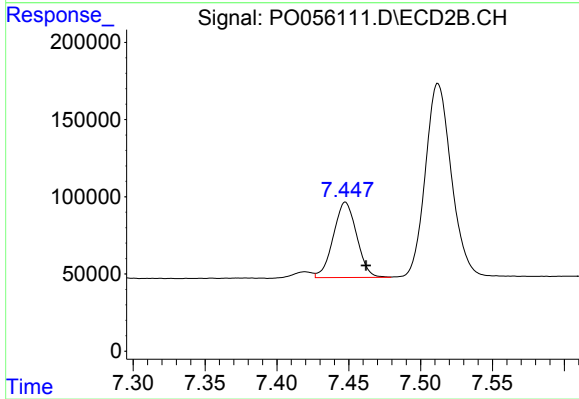
#37 AR-1262-2

R.T.: 7.168 min  
 Delta R.T.: -0.013 min  
 Response: 2324654  
 Conc: 371.78 ng/ml



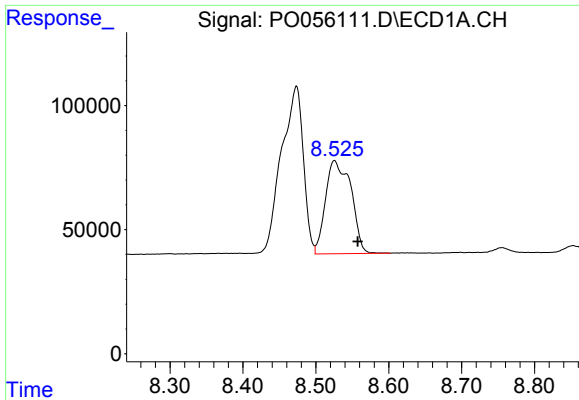
#38 AR-1262-3

R.T.: 8.473 min  
 Delta R.T.: 0.000 min  
 Response: 1441386  
 Conc: 397.20 ng/ml



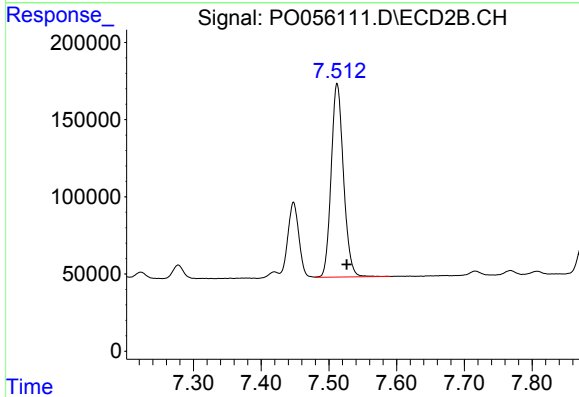
#38 AR-1262-3

R.T.: 7.448 min  
 Delta R.T.: -0.014 min  
 Response: 551976  
 Conc: 224.11 ng/ml

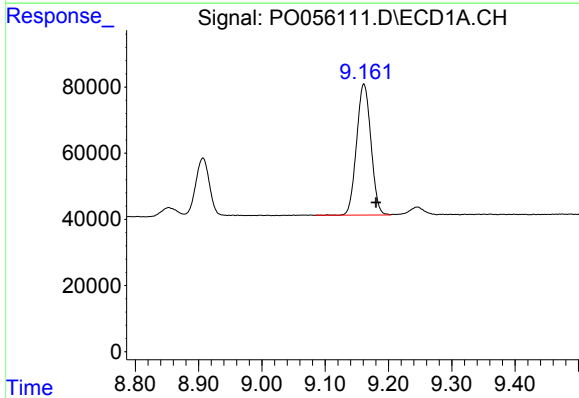


#39 AR-1262-4  
 R.T.: 8.526 min  
 Delta R.T.: -0.032 min  
 Response: 911745  
 Conc: 335.81 ng/ml

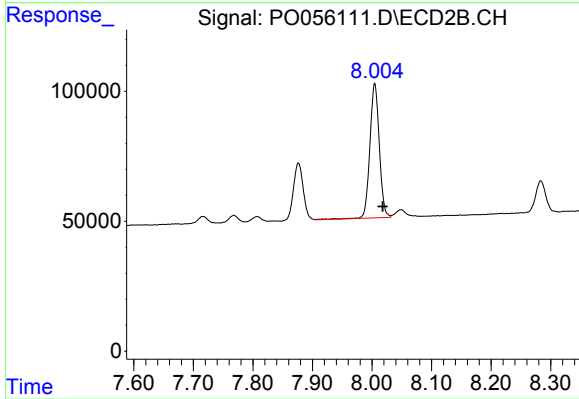
Instrument :  
 ECD\_O  
 ClientSampled :



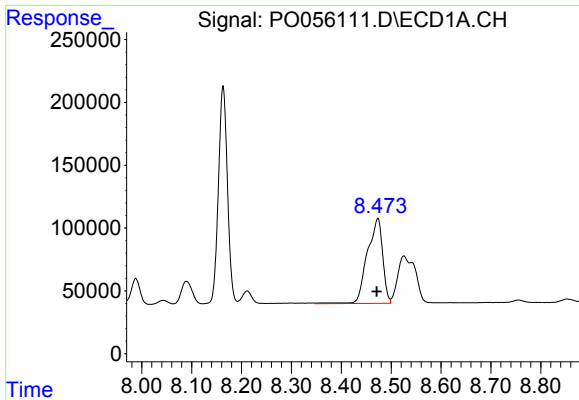
#39 AR-1262-4  
 R.T.: 7.512 min  
 Delta R.T.: -0.014 min  
 Response: 1581986  
 Conc: 386.33 ng/ml



#40 AR-1262-5  
 R.T.: 9.161 min  
 Delta R.T.: -0.019 min  
 Response: 623358  
 Conc: 345.06 ng/ml



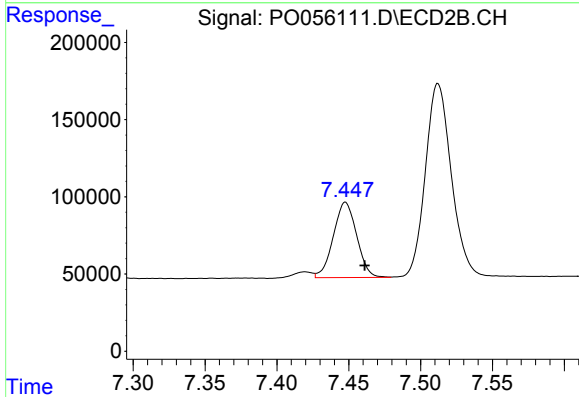
#40 AR-1262-5  
 R.T.: 8.005 min  
 Delta R.T.: -0.013 min  
 Response: 570233  
 Conc: 334.62 ng/ml



#41 AR-1268-1

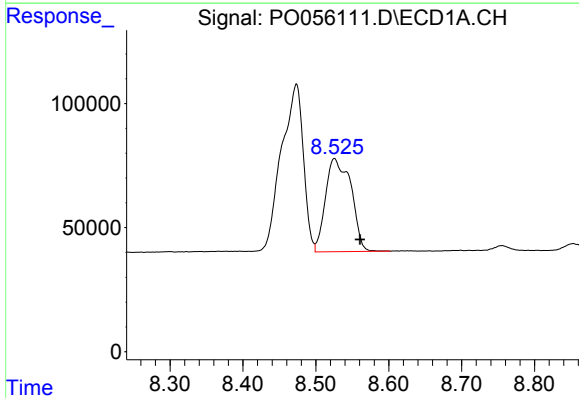
R.T.: 8.473 min  
 Delta R.T.: 0.002 min  
 Response: 1441386  
 Conc: 238.69 ng/ml

Instrument :  
 ECD\_O  
 ClientSampleId :



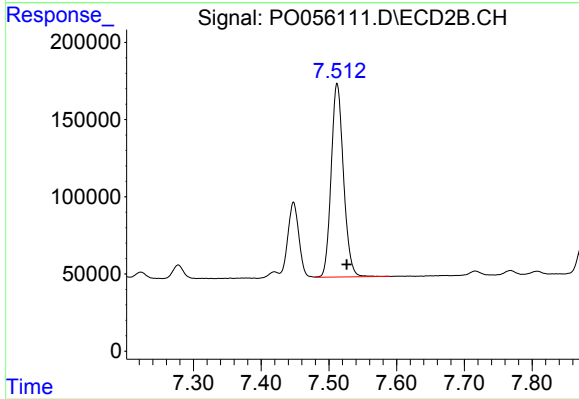
#41 AR-1268-1

R.T.: 7.448 min  
 Delta R.T.: -0.013 min  
 Response: 551976  
 Conc: 79.66 ng/ml



#42 AR-1268-2

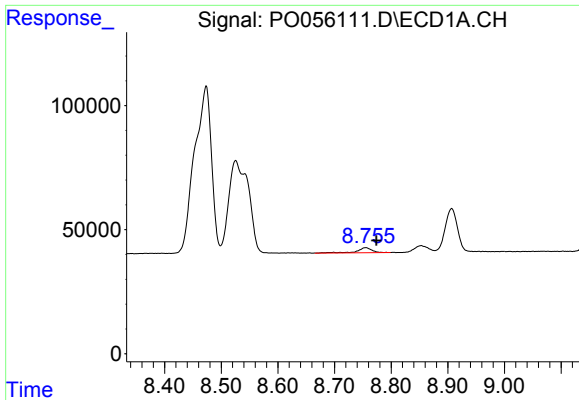
R.T.: 8.526 min  
 Delta R.T.: -0.035 min  
 Response: 911745  
 Conc: 166.57 ng/ml



#42 AR-1268-2

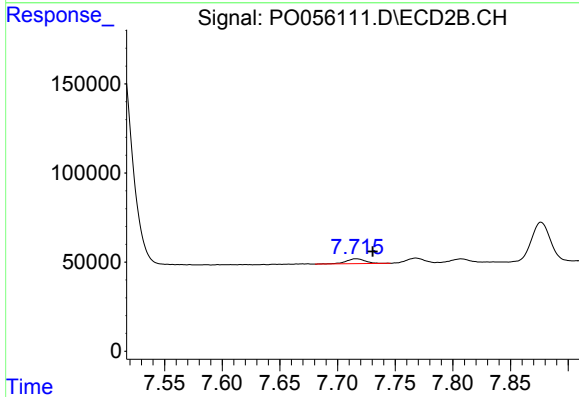
R.T.: 7.512 min  
 Delta R.T.: -0.014 min  
 Response: 1581986  
 Conc: 278.07 ng/ml



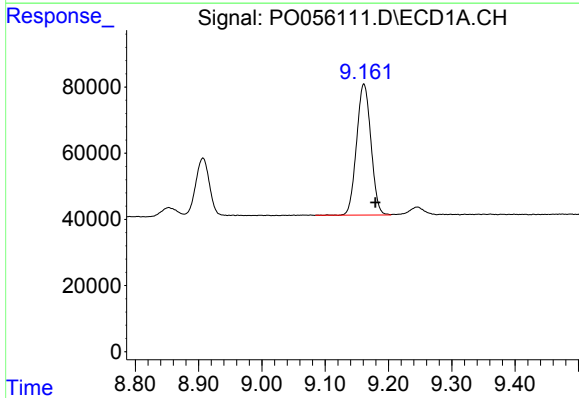


#43 AR-1268-3  
 R.T.: 8.755 min  
 Delta R.T.: -0.019 min  
 Response: 37390  
 Conc: 8.29 ng/ml

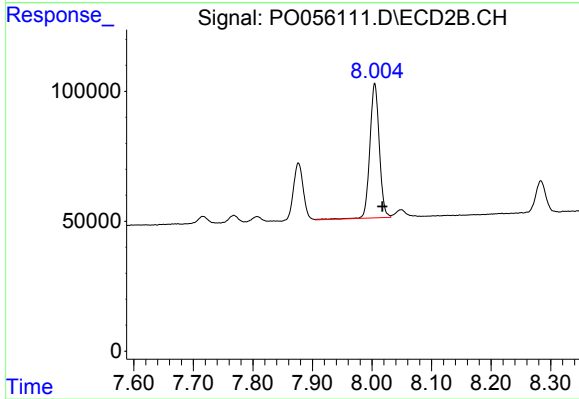
Instrument :  
 ECD\_O  
 ClientSampleId :



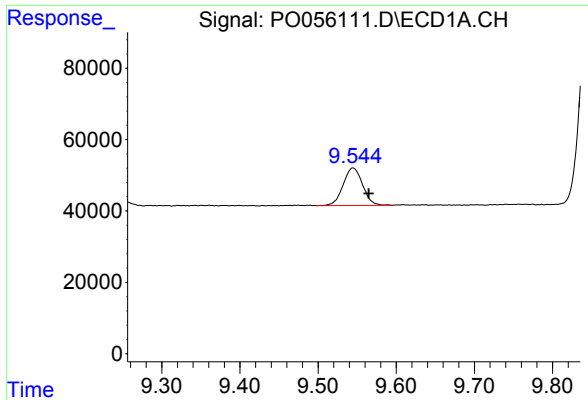
#43 AR-1268-3  
 R.T.: 7.716 min  
 Delta R.T.: -0.015 min  
 Response: 32272  
 Conc: 6.83 ng/ml



#44 AR-1268-4  
 R.T.: 9.161 min  
 Delta R.T.: -0.018 min  
 Response: 623358  
 Conc: 317.68 ng/ml



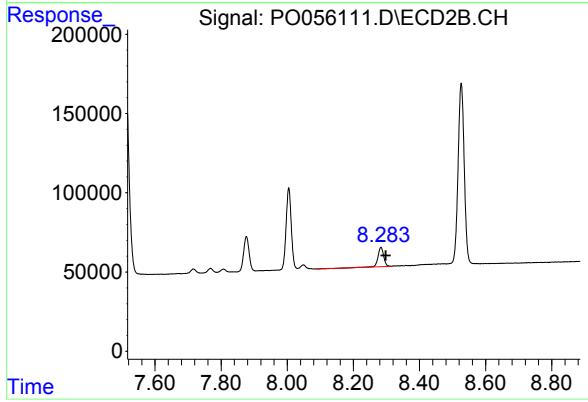
#44 AR-1268-4  
 R.T.: 8.005 min  
 Delta R.T.: -0.013 min  
 Response: 570233  
 Conc: 301.44 ng/ml



#45 AR-1268-5

R.T.: 9.545 min  
Delta R.T.: -0.020 min  
Response: 181293  
Conc: 13.44 ng/ml

Instrument :  
ECD\_O  
ClientSampled :



#45 AR-1268-5

R.T.: 8.283 min  
Delta R.T.: -0.014 min  
Response: 147937  
Conc: 12.15 ng/ml