

Data Path : Z:\pestpcbsrv\HPCHEM1\ECD_0\Data\P0051124\
 Data File : P0103623.D
 Signal(s) : Signal #1: ECD1A.ch Signal #2: ECD2B.ch
 Acq On : 11 May 2024 07:14
 Operator : YP/AJ
 Sample : P2433-01RE
 Misc :
 ALS Vial : 31 Sample Multiplier: 1

Instrument :
 ECD_0
ClientSampleId :
 72-12013RE

Manual Integrations
APPROVED
 Reviewed By :Yogesh Patel 05/13/2024
 Supervised By :Ankita Jodhani 05/13/2024

Integration File signal 1: autoint1.e
 Integration File signal 2: autoint2.e
 Quant Time: May 12 22:24:22 2024
 Quant Method : Z:\pestpcbsrv\HPCHEM1\ECD_0\methods\P0050624.M
 Quant Title : GC EXTRACTABLES
 QLast Update : Tue May 07 04:55:35 2024
 Response via : Initial Calibration
 Integrator: ChemStation

Volume Inj. : 2 µl
 Signal #1 Phase : ZB-MR1 Signal #2 Phase: ZB-MR2
 Signal #1 Info : 30Mx0.32mmx 0.50µ Signal #2 Info : 30M x 0.32mm x 0.25µm

Compound	RT#1	RT#2	Resp#1	Resp#2	ng/ml	ng/ml

System Monitoring Compounds						
1) SA Tetrachlo...	4.450	3.585	161.5E6	58176148	20.987	23.093
2) SA Decachlor...	10.208	8.544	104.2E6	22295693	21.981	17.139m

Target Compounds

(f)=RT Delta > 1/2 Window (#)=Amounts differ by > 25% (m)=manual int.

Data Path : Z:\pestpcbsrv\HPCHEM1\ECD_0\Data\P0051124\
 Data File : P0103623.D
 Signal(s) : Signal #1: ECD1A.ch Signal #2: ECD2B.ch
 Acq On : 11 May 2024 07:14
 Operator : YP/AJ
 Sample : P2433-01RE
 Misc :
 ALS Vial : 31 Sample Multiplier: 1

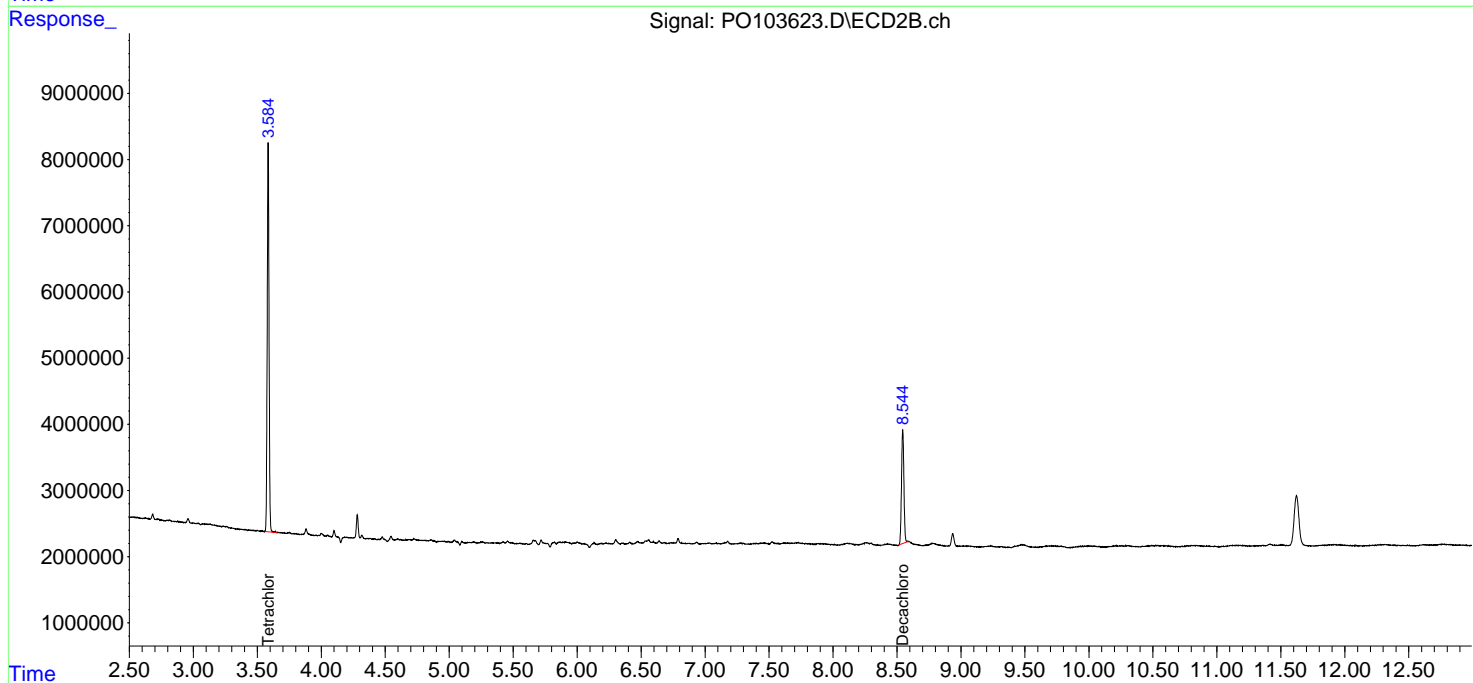
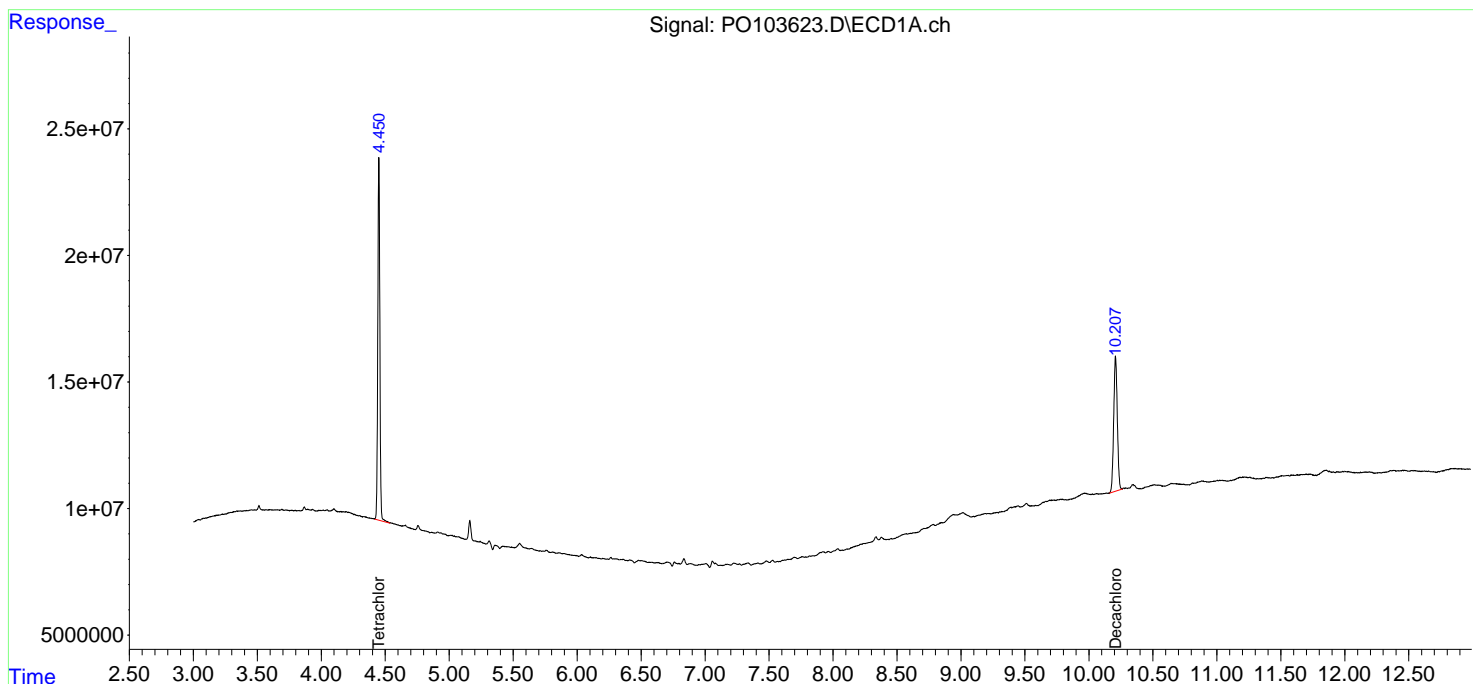
Instrument :
 ECD_0
 ClientSampleID :
 72-12013RE

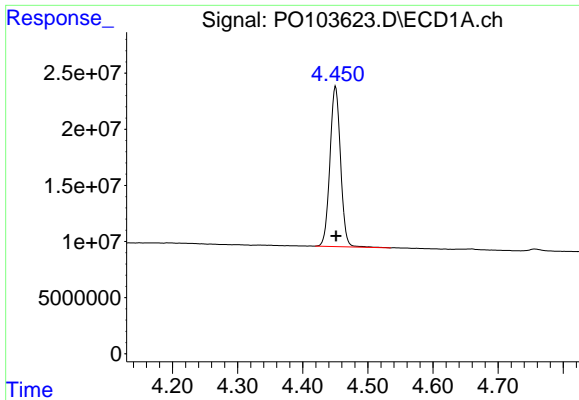
Manual Integrations
 APPROVED

Reviewed By :Yogesh Patel 05/13/2024
 Supervised By :Ankita Jodhani 05/13/2024

Integration File signal 1: autoint1.e
 Integration File signal 2: autoint2.e
 Quant Time: May 12 22:24:22 2024
 Quant Method : Z:\pestpcbsrv\HPCHEM1\ECD_0\methods\P0050624.M
 Quant Title : GC EXTRACTABLES
 QLast Update : Tue May 07 04:55:35 2024
 Response via : Initial Calibration
 Integrator: ChemStation

Volume Inj. : 2 µl
 Signal #1 Phase : ZB-MR1 Signal #2 Phase: ZB-MR2
 Signal #1 Info : 30Mx0.32mmx 0.50µ Signal #2 Info : 30M x 0.32mm x 0.25µm

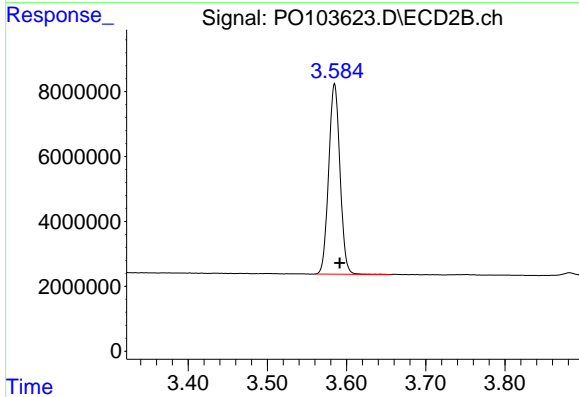




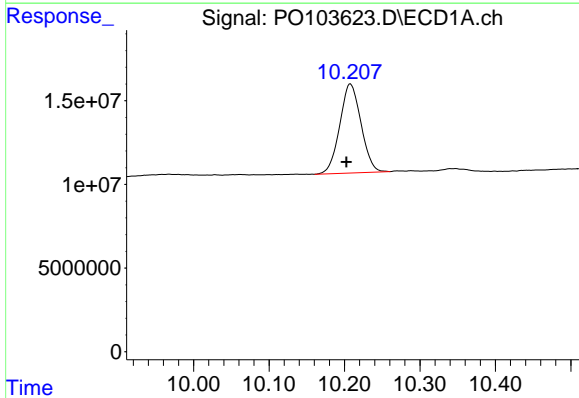
#1 Tetrachloro-m-xylene
 R.T.: 4.450 min
 Delta R.T.: 0.000 min
 Response: 161512174
 Conc: 20.99 ng/ml

Instrument :
 ECD_O
 ClientSampleId :
 72-12013RE

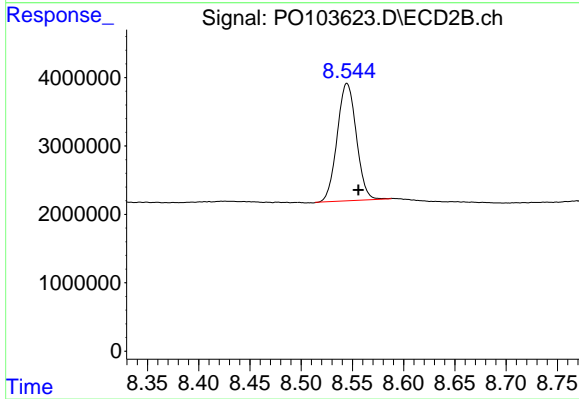
Manual Integrations
APPROVED
 Reviewed By :Yogesh Patel 05/13/2024
 Supervised By :Ankita Jodhani 05/13/2024



#1 Tetrachloro-m-xylene
 R.T.: 3.585 min
 Delta R.T.: -0.006 min
 Response: 58176148
 Conc: 23.09 ng/ml



#2 Decachlorobiphenyl
 R.T.: 10.208 min
 Delta R.T.: 0.005 min
 Response: 104193285
 Conc: 21.98 ng/ml



#2 Decachlorobiphenyl
 R.T.: 8.544 min
 Delta R.T.: -0.012 min
 Response: 22295693
 Conc: 17.14 ng/ml m