

Data Path : P:\HPCHEM1\ECD_O\Data\PO051518\
 Data File : PO044711.D
 Signal(s) : Signal #1: ECD1A.CH Signal #2: ECD2B.CH
 Acq On : 15 May 2018 22:41
 Operator : SM/UA
 Sample : AR1660CCC500
 Misc :
 ALS Vial : 16 Sample Multiplier: 1

Instrument :
 ECD_O
 ClientSampleId :
 AR1660CCC500

Integration File signal 1: autoint1.e
 Integration File signal 2: autoint2.e
 Quant Time: May 16 03:34:38 2018
 Quant Method : P:\HPCHEM1\ECD_O\methods\PO051518.M
 Quant Title : GC EXTRACTABLES
 QLast Update : Tue May 15 15:44:07 2018
 Response via : Initial Calibration
 Integrator: ChemStation 6890 Scale Mode: Small noise peaks clipped

Volume Inj. : 2 µl
 Signal #1 Phase : ZB-MR1 Signal #2 Phase: ZB-MR2
 Signal #1 Info : 30Mx0.32mmx 0.50µ Signal #2 Info : 30M x 0.32mm x 0.25µm

Compound	RT#1	RT#2	Resp#1	Resp#2	ng/ml	ng/ml
----------	------	------	--------	--------	-------	-------

System Monitoring Compounds

1) SA Tetrachlo...	4.032	3.297	10277994	15039466	67.071	62.737
2) SA Decachlor...	9.345	8.035	10424020	13102542	50.697	46.565

Target Compounds

3) L1 AR-1016-1	4.892	4.105	2613216	3409008	669.476	554.509
4) L1 AR-1016-2	5.230	4.537	3666909	3201586	687.419	594.027
5) L1 AR-1016-3	5.325	4.575	2926165	3891804	696.040	609.767
6) L1 AR-1016-4	5.743	4.738	3101438	4374958	702.490	620.141
7) L1 AR-1016-5	5.972	5.071	2401783	4680069	615.726	634.193
8) L2 AR-1221-1	4.229	3.497	287121	440915	94.075	97.518
9) L2 AR-1221-2	4.317	3.579	465056	657694	209.127	202.199
10) L2 AR-1221-3	4.388	3.648	1819645	2494622	247.526	229.262
11) L3 AR-1232-1	4.388	3.648	1819645	2494622	552.057	518.488
12) L3 AR-1232-2	5.149	4.327	3400857	13490815	1445.732	1267.172
13) L3 AR-1232-3	5.170	4.383	5835686	5331995	1343.166	1223.817
14) L3 AR-1232-4	5.230	4.537	3666909	3201586	1357.814	561.418 #
15) L3 AR-1232-5	5.325	4.575	2926165	3891804	1414.608	1370.611
16) L4 AR-1242-1	4.708	4.105	2397121	3409008	813.241	594.718 #
17) L4 AR-1242-2	5.170	4.327	5835686	13490815	838.095	735.547
18) L4 AR-1242-3	5.325	4.495	2926165	4018431	857.596	645.266
19) L4 AR-1242-4	5.608	4.575	2721531	3891804	829.688	658.478
20) L4 AR-1242-5	5.743	4.738	3101438	4374958	853.347	638.833 #
21) L5 AR-1248-1	5.608	4.738	2721531	4374958	500.150	470.238
22) L5 AR-1248-2	5.743	4.876	3101438	4865437	651.066	579.851
23) L5 AR-1248-3	5.997	5.071	1134065	4680069	168.700	327.248 #
24) L5 AR-1248-4	6.035	5.111	1058203	1564708	150.749	119.296
25) L5 AR-1248-5	6.183	5.609	2146618	6072592	488.769	852.939 #
26) L6 AR-1254-1	6.183	5.071	2146618	4680069	198.846	289.300 #
27) L6 AR-1254-2	6.456	5.214	394649	3182682	54.252	225.882 #
28) L6 AR-1254-3	6.541	5.609	1536291	6072592	123.927	259.670 #
29) L6 AR-1254-4	6.817	5.824	1336624	475949	129.570	25.488 #
30) L6 AR-1254-5	7.074	6.121	3349300	1036719	433.968	94.395 #
31) L7 AR-1260-1	6.699	5.721	6278654	9260733	671.094	583.728
32) L7 AR-1260-2	6.949	5.908	7635340	12354359	602.328	569.152
33) L7 AR-1260-3	7.300	6.222	6090777	11586714	578.707	539.413
34) L7 AR-1260-4	7.822	6.749	12779453	20239156	538.985	476.891
35) L7 AR-1260-5	8.105	7.083	7650729	13471181	524.206	463.162
36) L8 AR-1262-1	6.699	5.908	6278654	12354359	798.648	688.478
37) L8 AR-1262-2	6.949	6.050	7635340	10264887	724.858	609.351
38) L8 AR-1262-3	7.224	6.255	8328204	10629650	829.640	358.328 #

Data Path : P:\HPCHEM1\ECD_O\Data\PO051518\
 Data File : PO044711.D
 Signal(s) : Signal #1: ECD1A.CH Signal #2: ECD2B.CH
 Acq On : 15 May 2018 22:41
 Operator : SM/UA
 Sample : AR1660CCC500
 Misc :
 ALS Vial : 16 Sample Multiplier: 1

Instrument :
 ECD_O
 ClientSampleId :
 AR1660CCC500

Integration File signal 1: autoint1.e
 Integration File signal 2: autoint2.e
 Quant Time: May 16 03:34:38 2018
 Quant Method : P:\HPCHEM1\ECD_O\methods\PO051518.M
 Quant Title : GC EXTRACTABLES
 QLast Update : Tue May 15 15:44:07 2018
 Response via : Initial Calibration
 Integrator: ChemStation 6890 Scale Mode: Small noise peaks clipped

Volume Inj. : 2 µl
 Signal #1 Phase : ZB-MR1 Signal #2 Phase: ZB-MR2
 Signal #1 Info : 30Mx0.32mmx 0.50µ Signal #2 Info : 30M x 0.32mm x 0.25µm

	Compound	RT#1	RT#2	Resp#1	Resp#2	ng/ml	ng/ml
39)	L8 AR-1262-4	7.521	6.505	5857533	7992386	419.219	327.175
40)	L8 AR-1262-5	7.822	6.749	12779453	20239156	419.526	370.594
41)	L9 AR-1268-1	8.105	7.017	7650729	4597500	231.693	78.873 #
42)	L9 AR-1268-2	8.155	7.083	4909149	13471181	164.351	249.792 #
43)	L9 AR-1268-3	8.366	7.270	163863	224173	6.242	4.750
44)	L9 AR-1268-4	8.728	7.571	3337248	4467268	300.628	238.231
45)	L9 AR-1268-5	9.072	7.831	846980	1068524	10.987	8.093 #

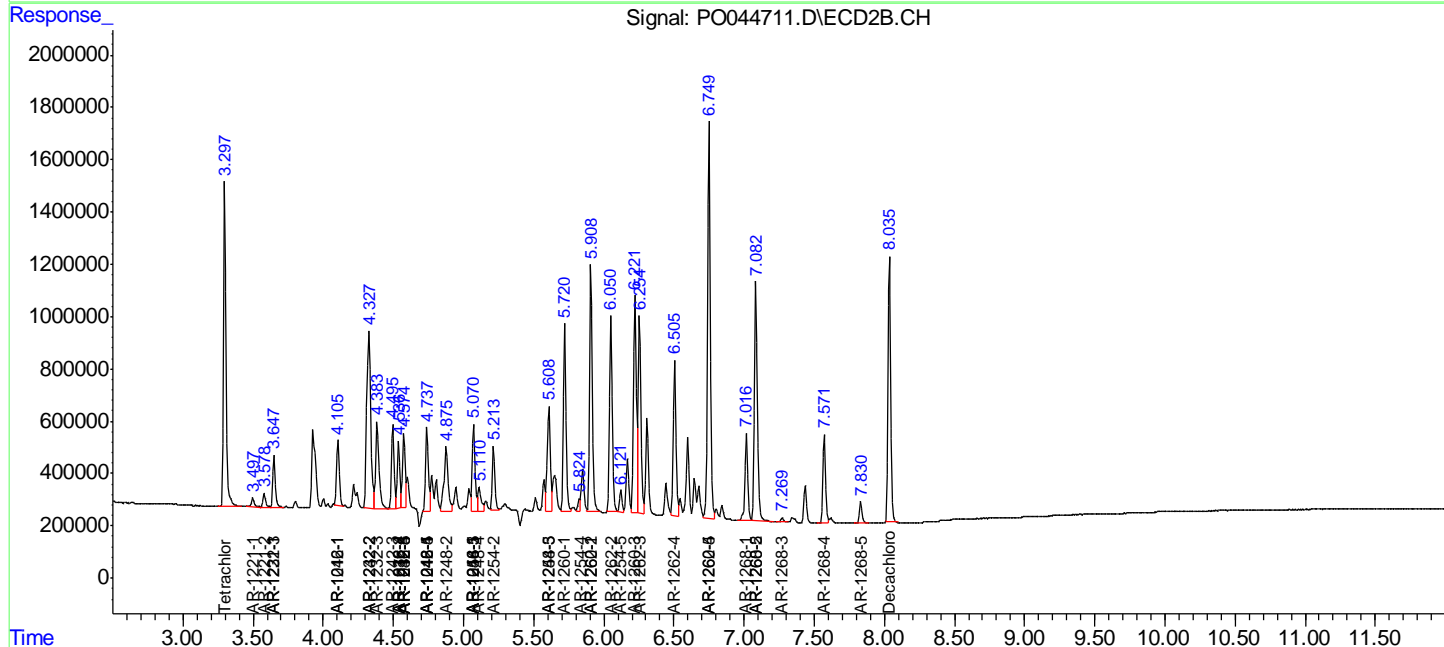
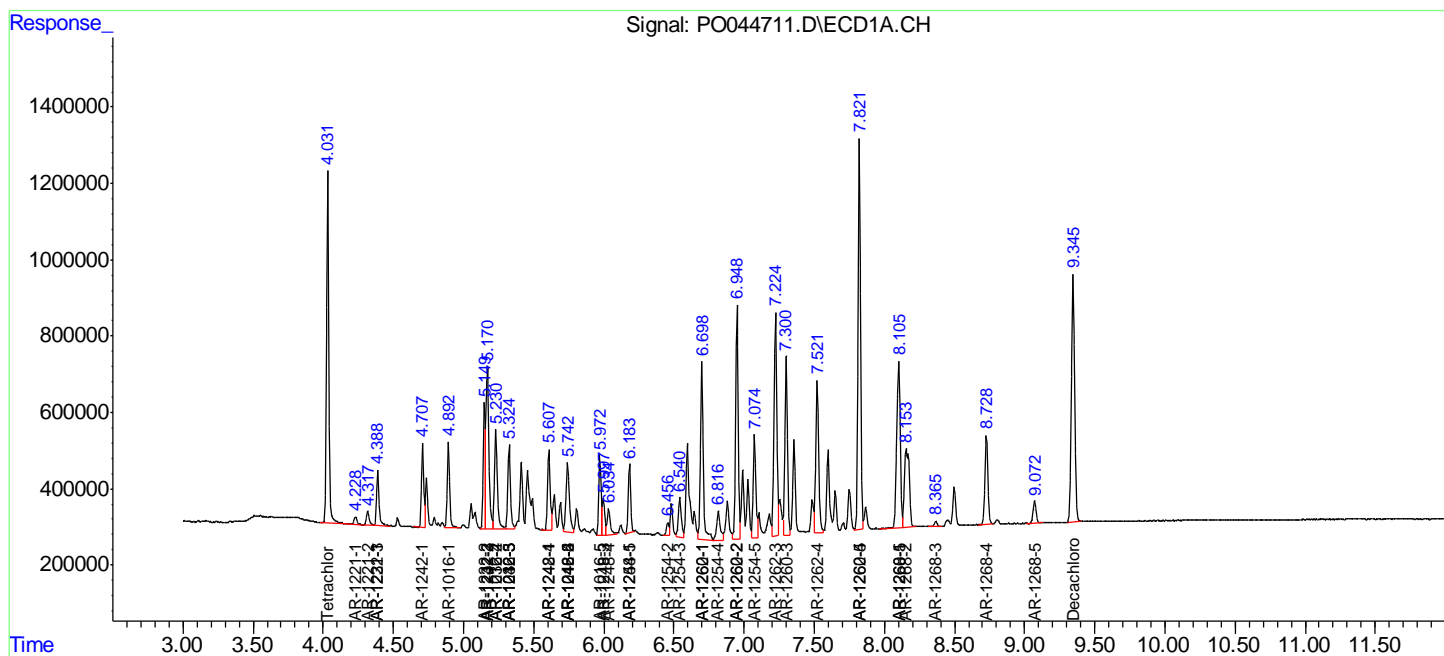
(f)=RT Delta > 1/2 Window (#)=Amounts differ by > 25% (m)=manual int.

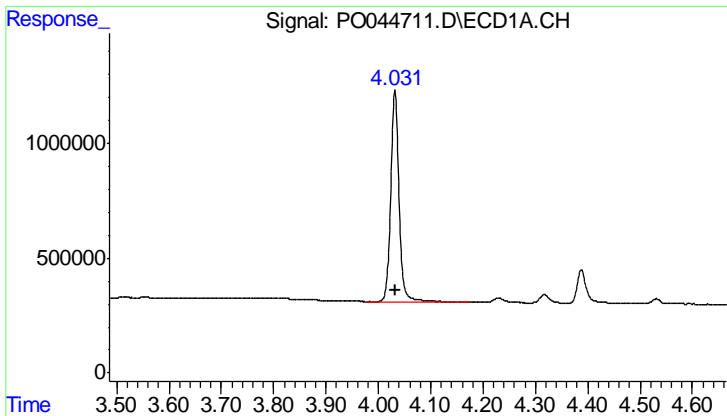
Data Path : P:\HPCHEM1\ECD_O\Data\PO051518\
 Data File : PO044711.D
 Signal(s) : Signal #1: ECD1A.CH Signal #2: ECD2B.CH
 Acq On : 15 May 2018 22:41
 Operator : SM/UA
 Sample : AR1660CCC500
 Misc :
 ALS Vial : 16 Sample Multiplier: 1

Instrument :
 ECD_O
 Client Sampled :
 AR1660CCC500

Integration File signal 1: autoint1.e
 Integration File signal 2: autoint2.e
 Quant Time: May 16 03:34:38 2018
 Quant Method : P:\HPCHEM1\ECD_O\methods\PO051518.M
 Quant Title : GC EXTRACTABLES
 QLast Update : Tue May 15 15:44:07 2018
 Response via : Initial Calibration
 Integrator: ChemStation 6890 Scale Mode: Small noise peaks clipped

Volume Inj. : 2 µl
 Signal #1 Phase : ZB-MR1 Signal #2 Phase: ZB-MR2
 Signal #1 Info : 30Mx0.32mmx 0.50µ Signal #2 Info : 30M x 0.32mm x 0.25µm

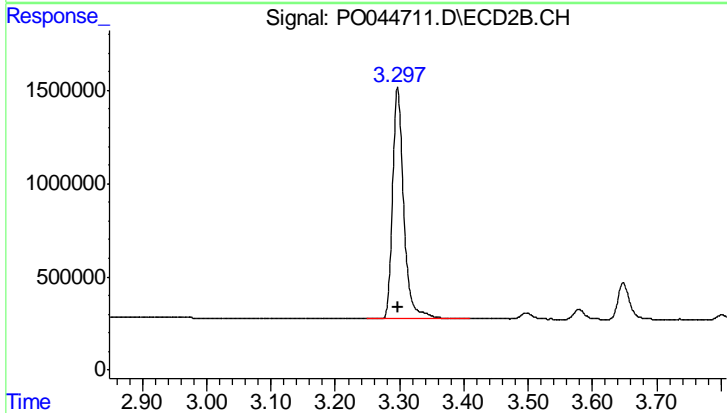




#1 Tetrachloro-m-xylene

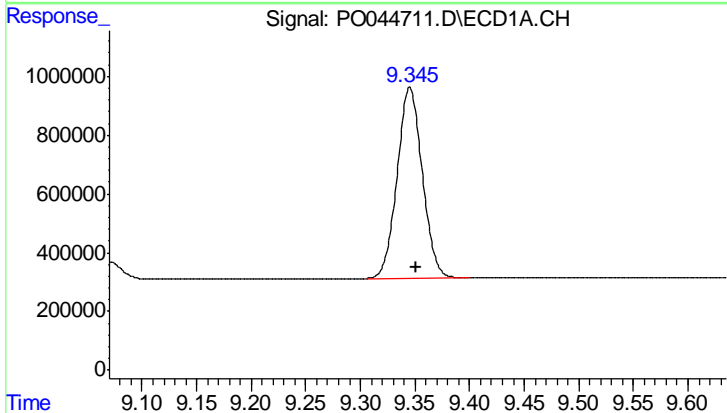
R.T.: 4.032 min
 Delta R.T.: -0.001 min
 Response: 10277994
 Conc: 67.07 ng/ml

Instrument :
 ECD_O
 ClientSampleId :
 AR1660CCC500



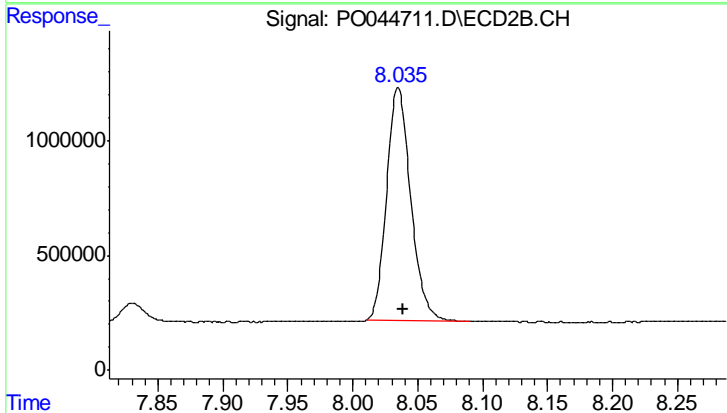
#1 Tetrachloro-m-xylene

R.T.: 3.297 min
 Delta R.T.: 0.000 min
 Response: 15039466
 Conc: 62.74 ng/ml



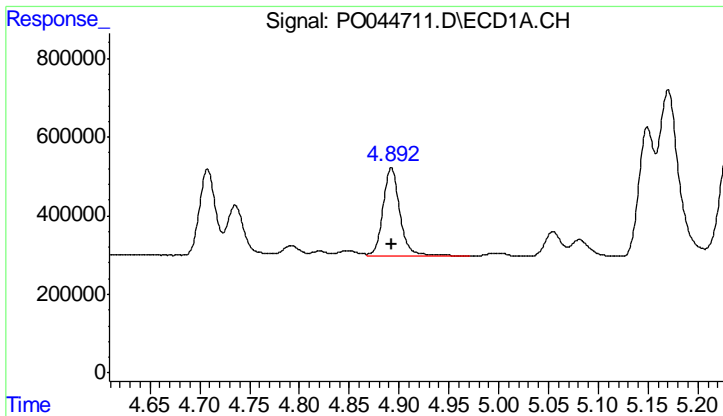
#2 Decachlorobiphenyl

R.T.: 9.345 min
 Delta R.T.: -0.005 min
 Response: 10424020
 Conc: 50.70 ng/ml



#2 Decachlorobiphenyl

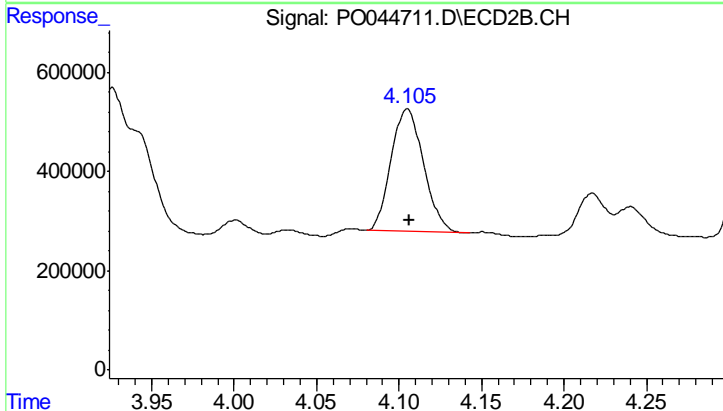
R.T.: 8.035 min
 Delta R.T.: -0.003 min
 Response: 13102542
 Conc: 46.56 ng/ml



#3 AR-1016-1

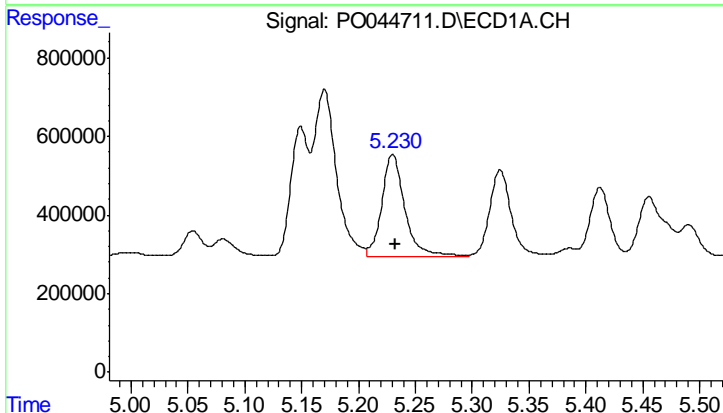
R.T.: 4.892 min
 Delta R.T.: 0.000 min
 Response: 2613216
 Conc: 669.48 ng/ml

Instrument :
 ECD_O
 ClientSampleId :
 AR1660CCC500



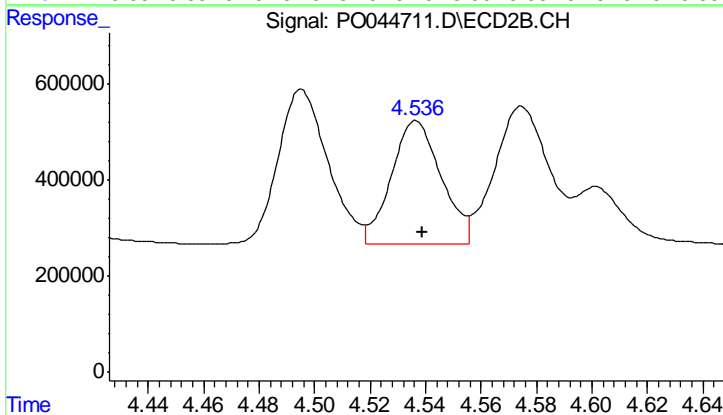
#3 AR-1016-1

R.T.: 4.105 min
 Delta R.T.: -0.002 min
 Response: 3409008
 Conc: 554.51 ng/ml



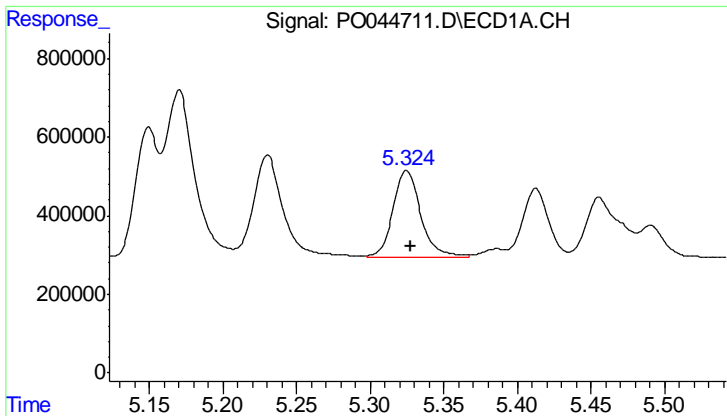
#4 AR-1016-2

R.T.: 5.230 min
 Delta R.T.: -0.002 min
 Response: 3666909
 Conc: 687.42 ng/ml



#4 AR-1016-2

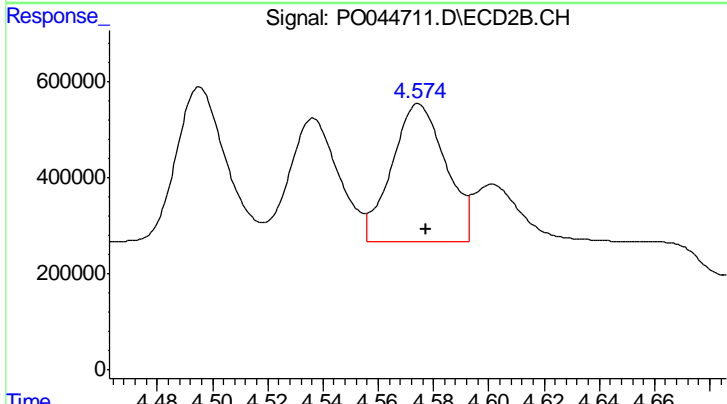
R.T.: 4.537 min
 Delta R.T.: -0.002 min
 Response: 3201586
 Conc: 594.03 ng/ml



#5 AR-1016-3

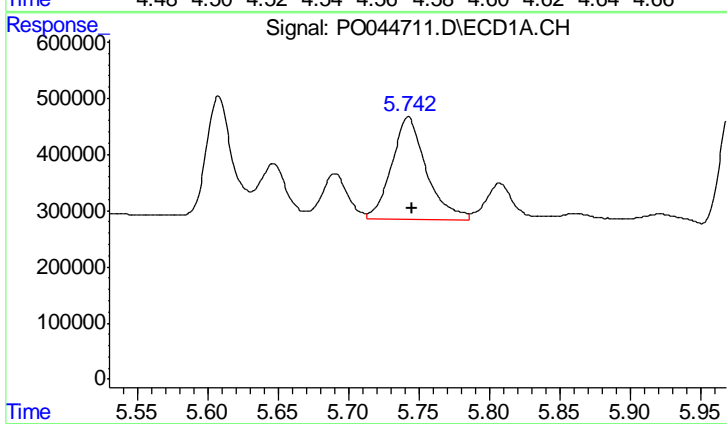
R.T.: 5.325 min
 Delta R.T.: -0.003 min
 Response: 2926165
 Conc: 696.04 ng/ml

Instrument :
 ECD_O
 ClientSampleId :
 AR1660CCC500



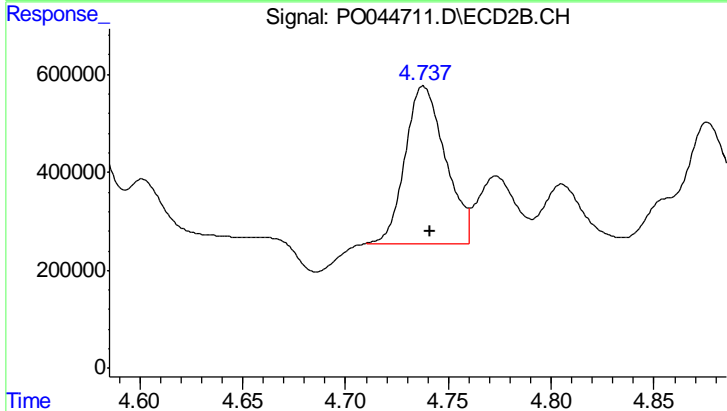
#5 AR-1016-3

R.T.: 4.575 min
 Delta R.T.: -0.003 min
 Response: 3891804
 Conc: 609.77 ng/ml



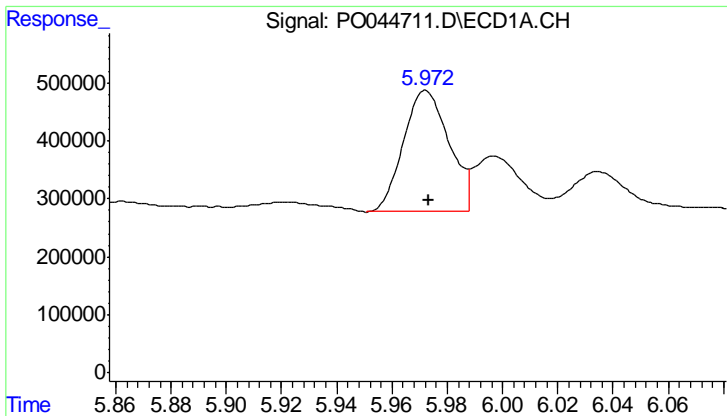
#6 AR-1016-4

R.T.: 5.743 min
 Delta R.T.: -0.002 min
 Response: 3101438
 Conc: 702.49 ng/ml



#6 AR-1016-4

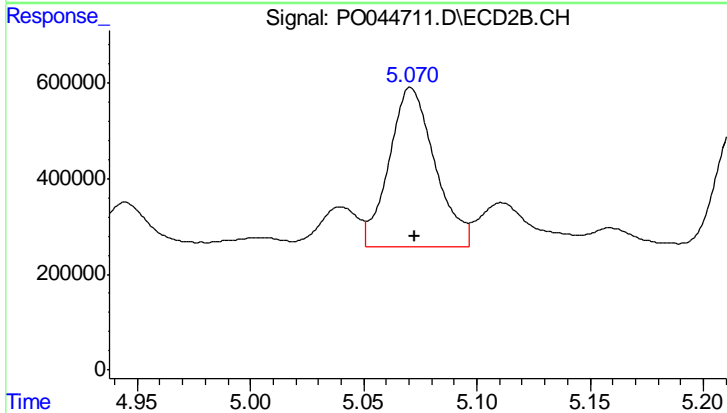
R.T.: 4.738 min
 Delta R.T.: -0.003 min
 Response: 4374958
 Conc: 620.14 ng/ml



#7 AR-1016-5

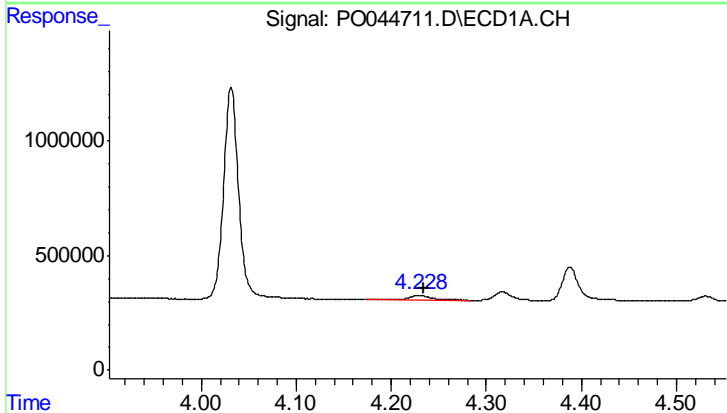
R.T.: 5.972 min
 Delta R.T.: -0.001 min
 Response: 2401783
 Conc: 615.73 ng/ml

Instrument :
 ECD_O
 ClientSampled :
 AR1660CCC500



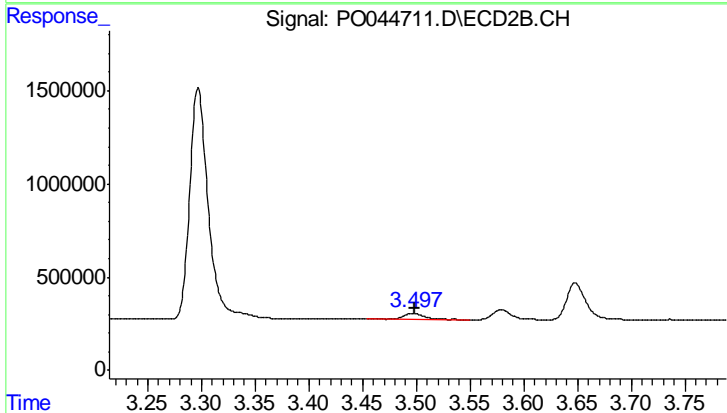
#7 AR-1016-5

R.T.: 5.071 min
 Delta R.T.: -0.002 min
 Response: 4680069
 Conc: 634.19 ng/ml



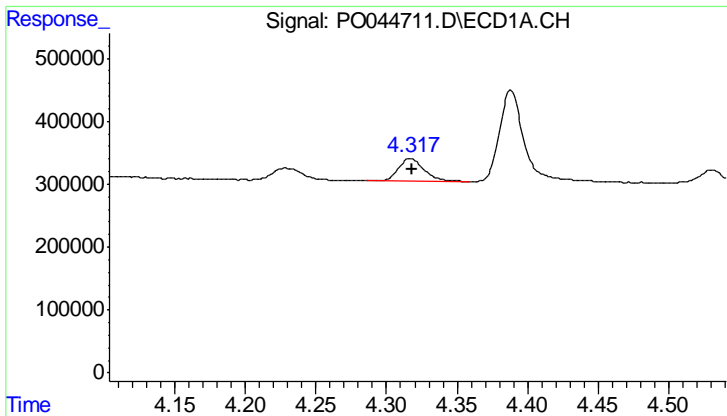
#8 AR-1221-1

R.T.: 4.229 min
 Delta R.T.: -0.006 min
 Response: 287121
 Conc: 94.08 ng/ml



#8 AR-1221-1

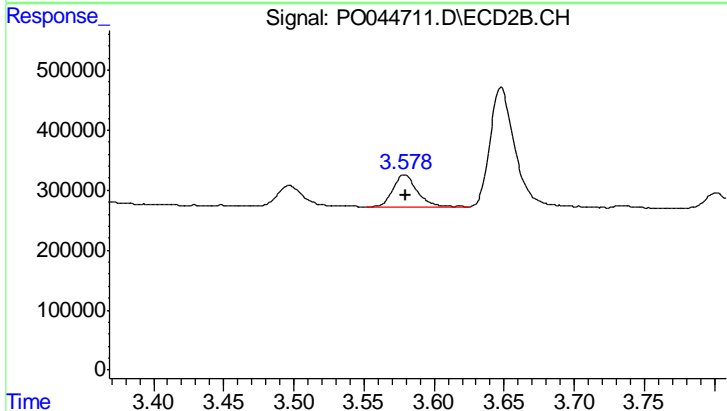
R.T.: 3.497 min
 Delta R.T.: -0.002 min
 Response: 440915
 Conc: 97.52 ng/ml



#9 AR-1221-2

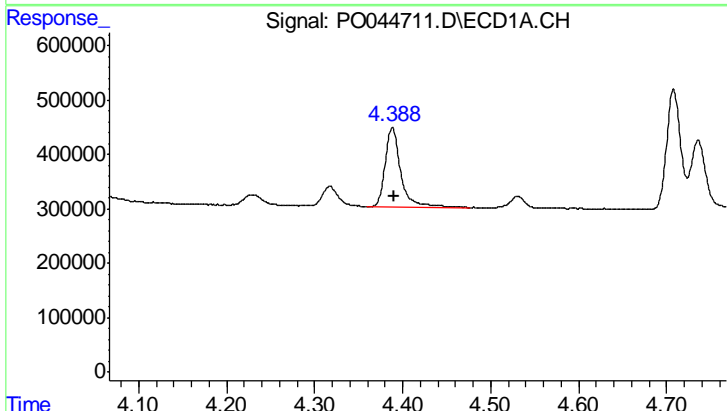
R.T.: 4.317 min
 Delta R.T.: 0.000 min
 Response: 465056
 Conc: 209.13 ng/ml

Instrument :
 ECD_O
 ClientSampleId :
 AR1660CCC500



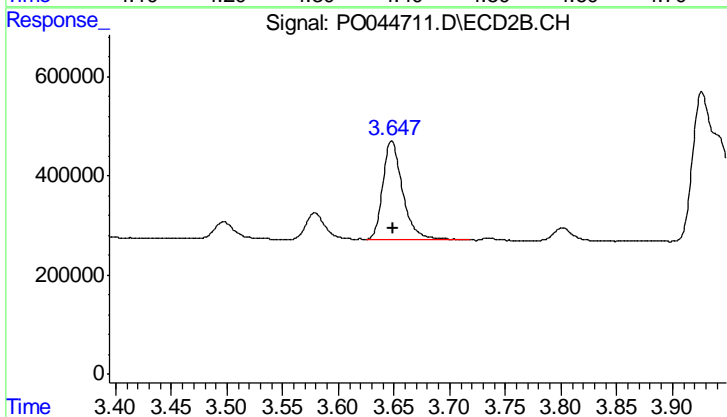
#9 AR-1221-2

R.T.: 3.579 min
 Delta R.T.: 0.000 min
 Response: 657694
 Conc: 202.20 ng/ml



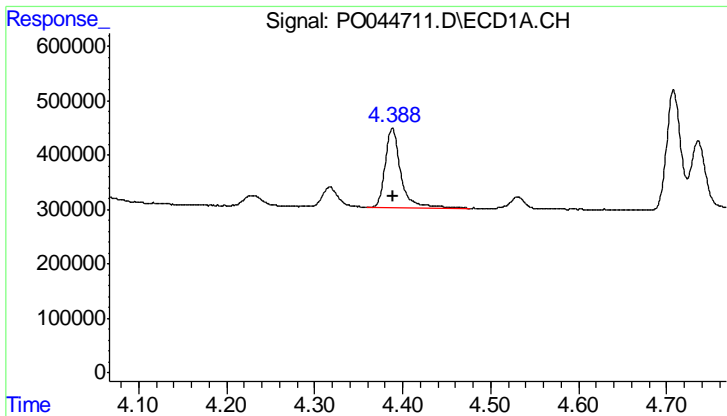
#10 AR-1221-3

R.T.: 4.388 min
 Delta R.T.: -0.001 min
 Response: 1819645
 Conc: 247.53 ng/ml



#10 AR-1221-3

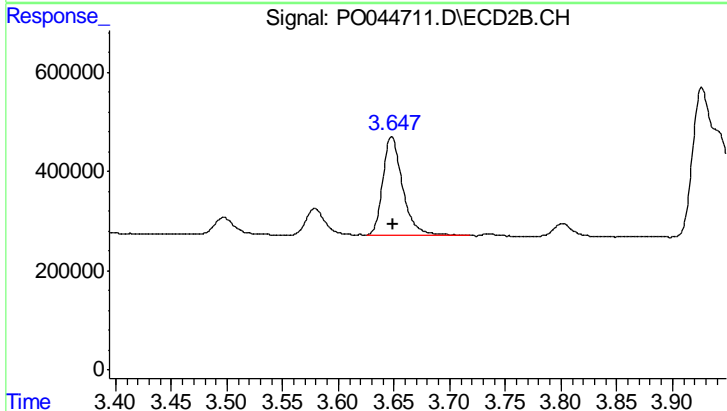
R.T.: 3.648 min
 Delta R.T.: -0.002 min
 Response: 2494622
 Conc: 229.26 ng/ml



#11 AR-1232-1

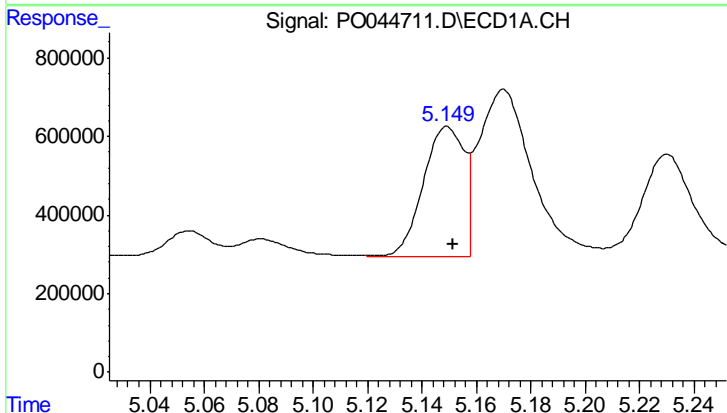
R.T.: 4.388 min
 Delta R.T.: 0.000 min
 Response: 1819645
 Conc: 552.06 ng/ml

Instrument :
 ECD_O
 ClientSampleId :
 AR1660CCC500



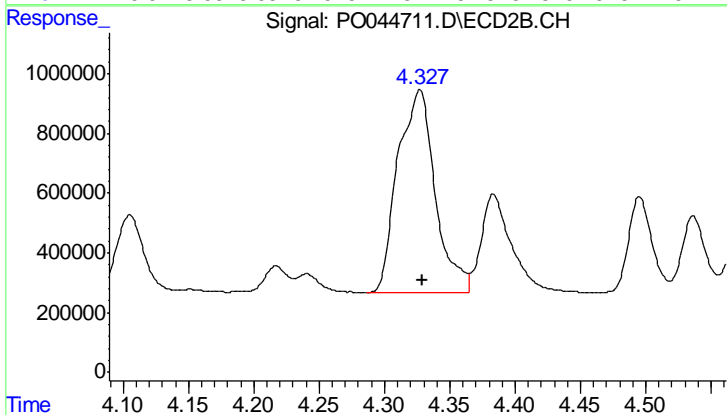
#11 AR-1232-1

R.T.: 3.648 min
 Delta R.T.: 0.000 min
 Response: 2494622
 Conc: 518.49 ng/ml



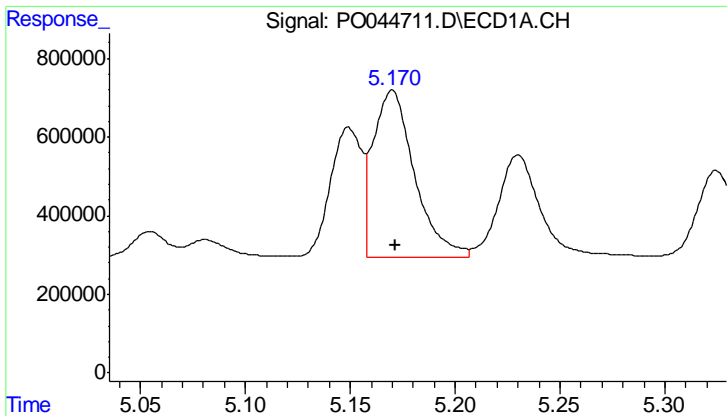
#12 AR-1232-2

R.T.: 5.149 min
 Delta R.T.: -0.002 min
 Response: 3400857
 Conc: 1445.73 ng/ml



#12 AR-1232-2

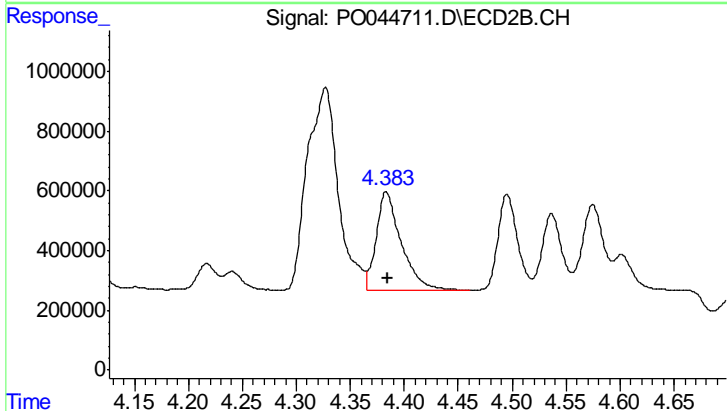
R.T.: 4.327 min
 Delta R.T.: -0.002 min
 Response: 13490815
 Conc: 1267.17 ng/ml



#13 AR-1232-3

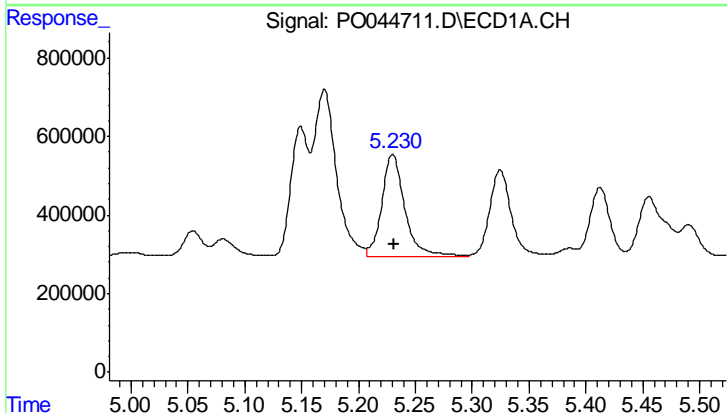
R.T.: 5.170 min
 Delta R.T.: -0.001 min
 Response: 5835686
 Conc: 1343.17 ng/ml

Instrument :
 ECD_O
 ClientSampleId :
 AR1660CCC500



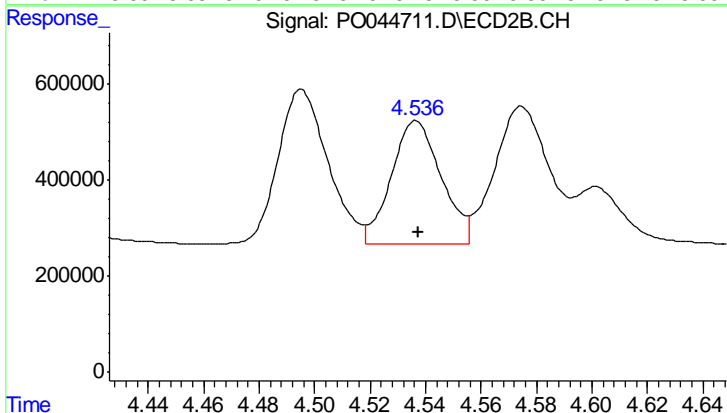
#13 AR-1232-3

R.T.: 4.383 min
 Delta R.T.: -0.002 min
 Response: 5331995
 Conc: 1223.82 ng/ml



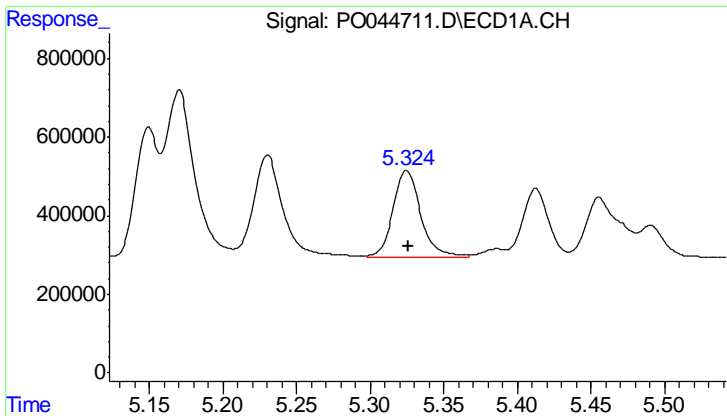
#14 AR-1232-4

R.T.: 5.230 min
 Delta R.T.: -0.001 min
 Response: 3666909
 Conc: 1357.81 ng/ml



#14 AR-1232-4

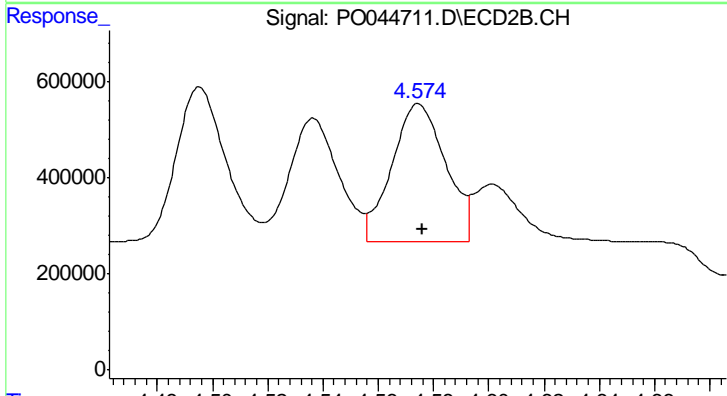
R.T.: 4.537 min
 Delta R.T.: 0.000 min
 Response: 3201586
 Conc: 561.42 ng/ml



#15 AR-1232-5

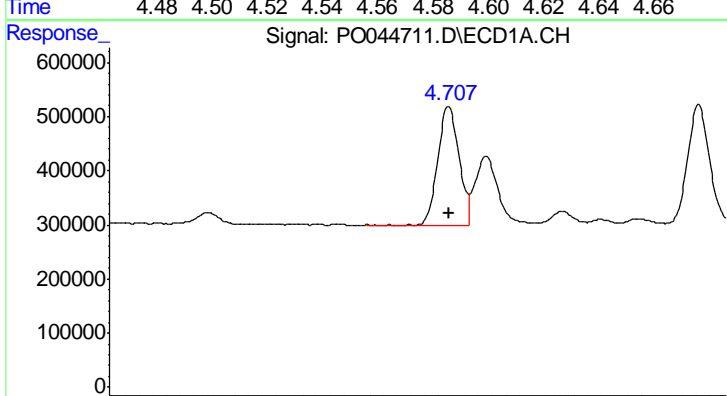
R.T.: 5.325 min
 Delta R.T.: -0.001 min
 Response: 2926165
 Conc: 1414.61 ng/ml

Instrument :
 ECD_O
 ClientSampleId :
 AR1660CCC500



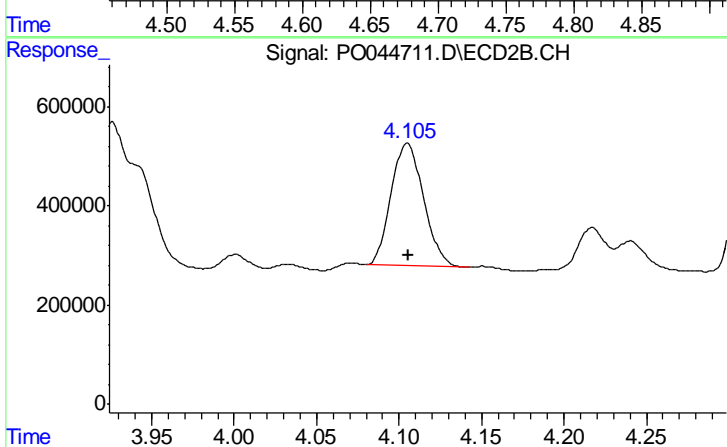
#15 AR-1232-5

R.T.: 4.575 min
 Delta R.T.: -0.001 min
 Response: 3891804
 Conc: 1370.61 ng/ml



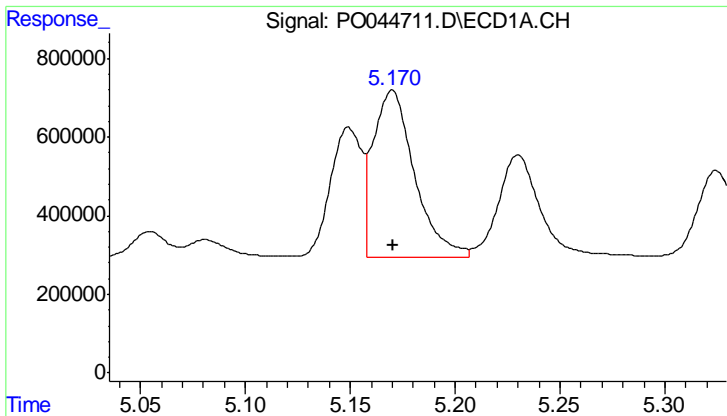
#16 AR-1242-1

R.T.: 4.708 min
 Delta R.T.: 0.000 min
 Response: 2397121
 Conc: 813.24 ng/ml



#16 AR-1242-1

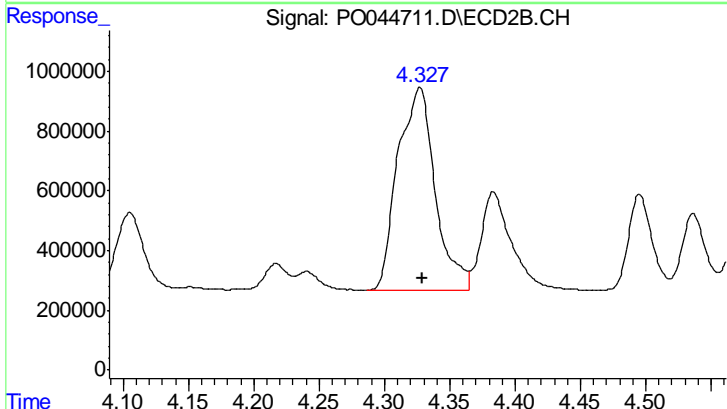
R.T.: 4.105 min
 Delta R.T.: 0.000 min
 Response: 3409008
 Conc: 594.72 ng/ml



#17 AR-1242-2

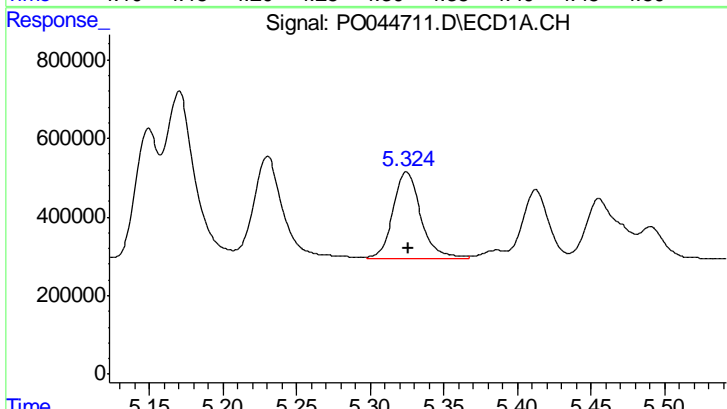
R.T.: 5.170 min
 Delta R.T.: 0.000 min
 Response: 5835686
 Conc: 838.09 ng/ml

Instrument :
 ECD_O
 ClientSampled :
 AR1660CCC500



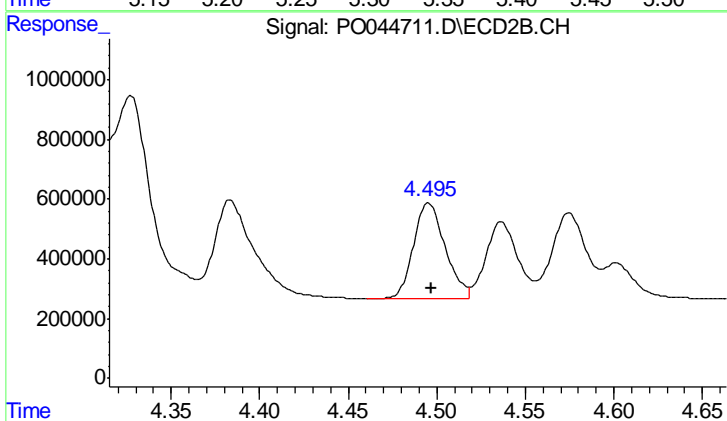
#17 AR-1242-2

R.T.: 4.327 min
 Delta R.T.: -0.002 min
 Response: 13490815
 Conc: 735.55 ng/ml



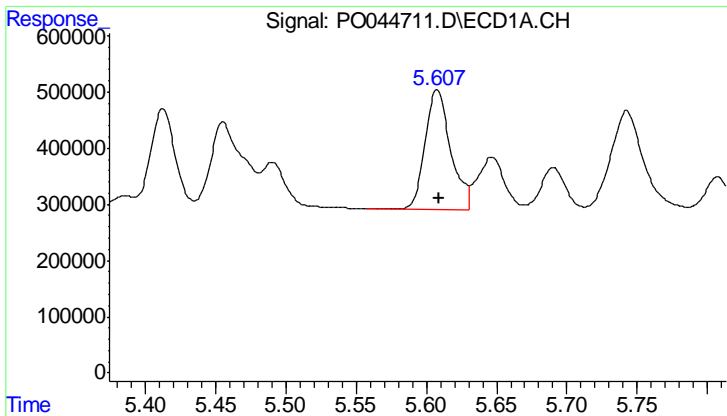
#18 AR-1242-3

R.T.: 5.325 min
 Delta R.T.: -0.001 min
 Response: 2926165
 Conc: 857.60 ng/ml



#18 AR-1242-3

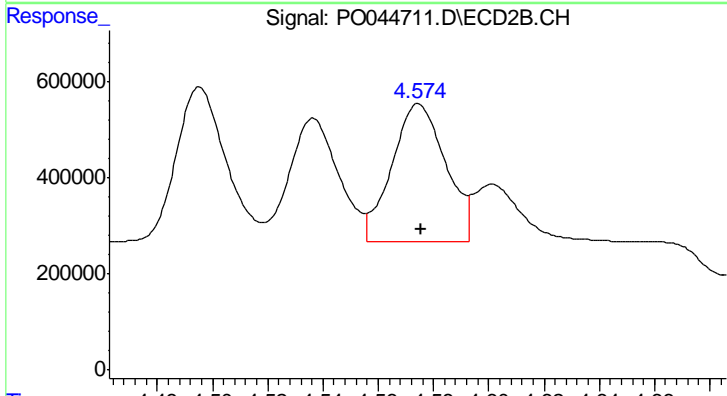
R.T.: 4.495 min
 Delta R.T.: -0.001 min
 Response: 4018431
 Conc: 645.27 ng/ml



#19 AR-1242-4

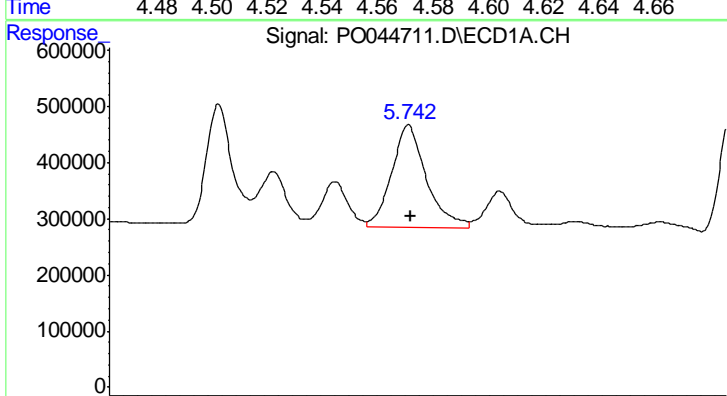
R.T.: 5.608 min
 Delta R.T.: 0.000 min
 Response: 2721531
 Conc: 829.69 ng/ml

Instrument :
 ECD_O
 ClientSampled :
 AR1660CCC500



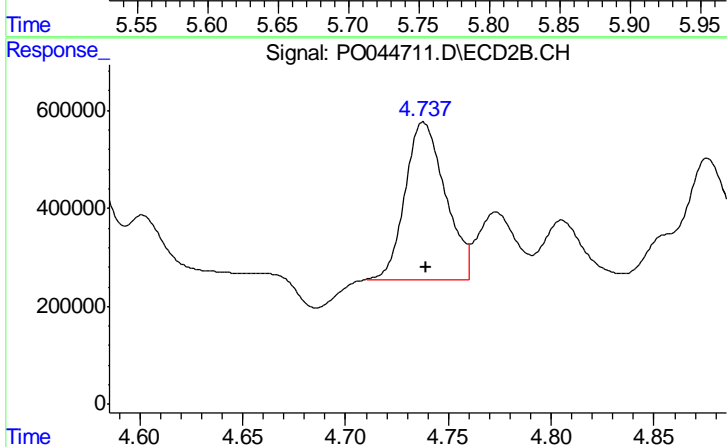
#19 AR-1242-4

R.T.: 4.575 min
 Delta R.T.: -0.001 min
 Response: 3891804
 Conc: 658.48 ng/ml



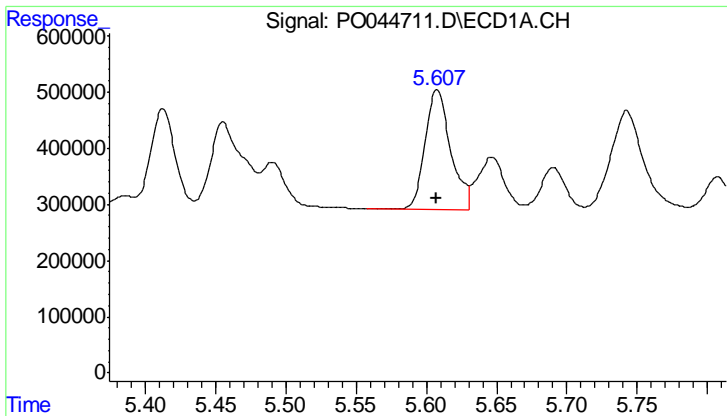
#20 AR-1242-5

R.T.: 5.743 min
 Delta R.T.: -0.002 min
 Response: 3101438
 Conc: 853.35 ng/ml



#20 AR-1242-5

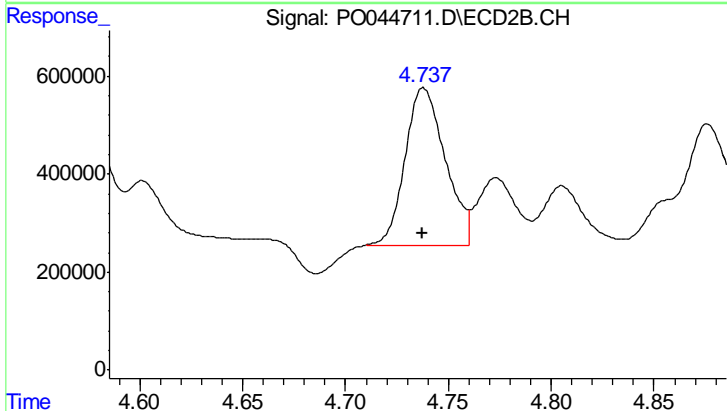
R.T.: 4.738 min
 Delta R.T.: -0.001 min
 Response: 4374958
 Conc: 638.83 ng/ml



#21 AR-1248-1

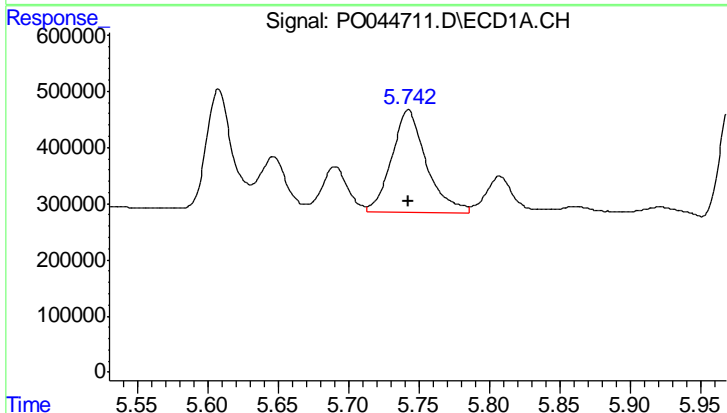
R.T.: 5.608 min
 Delta R.T.: 0.000 min
 Response: 2721531
 Conc: 500.15 ng/ml

Instrument :
 ECD_O
 ClientSampled :
 AR1660CCC500



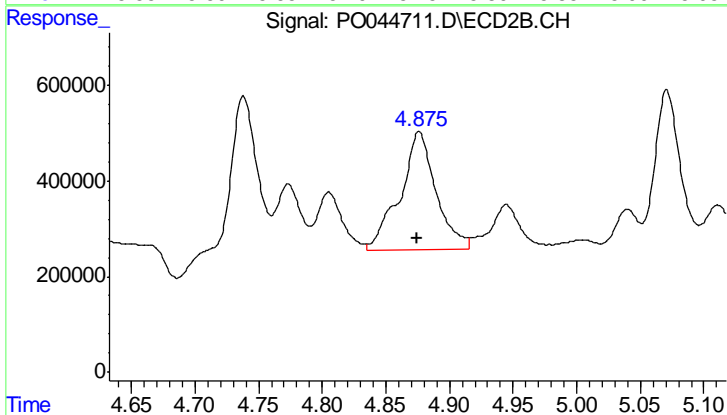
#21 AR-1248-1

R.T.: 4.738 min
 Delta R.T.: 0.000 min
 Response: 4374958
 Conc: 470.24 ng/ml



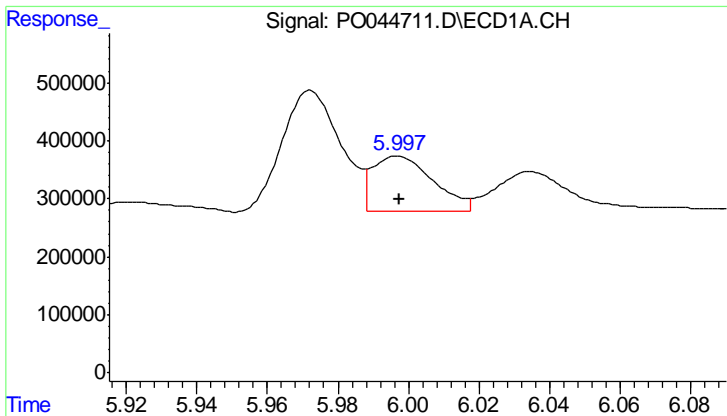
#22 AR-1248-2

R.T.: 5.743 min
 Delta R.T.: 0.000 min
 Response: 3101438
 Conc: 651.07 ng/ml



#22 AR-1248-2

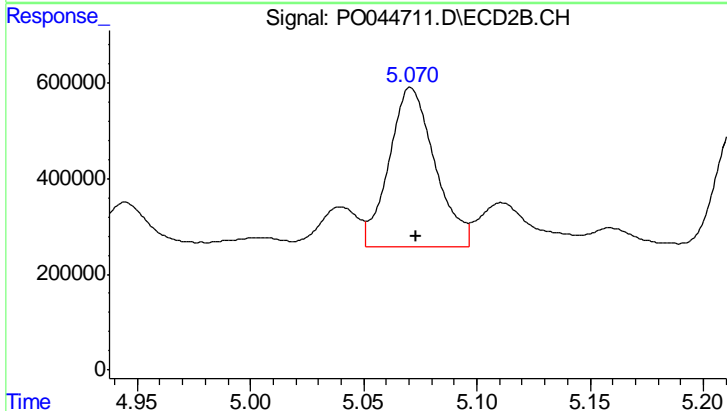
R.T.: 4.876 min
 Delta R.T.: 0.000 min
 Response: 4865437
 Conc: 579.85 ng/ml



#23 AR-1248-3

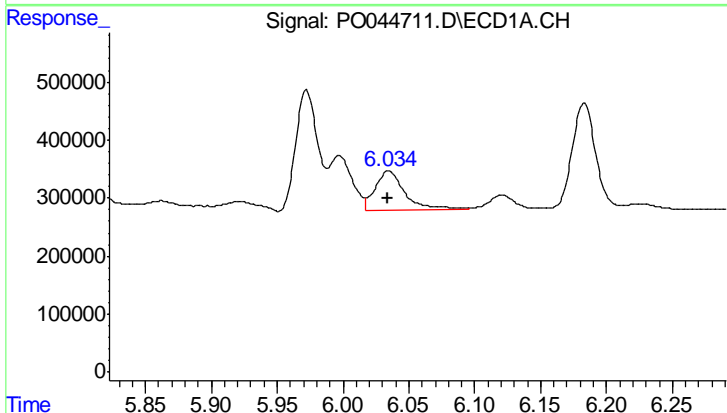
R.T.: 5.997 min
 Delta R.T.: 0.000 min
 Response: 1134065
 Conc: 168.70 ng/ml

Instrument :
 ECD_O
 ClientSampleId :
 AR1660CCC500



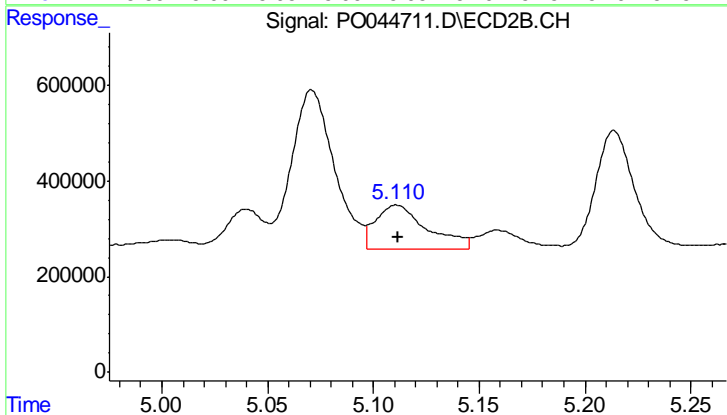
#23 AR-1248-3

R.T.: 5.071 min
 Delta R.T.: -0.002 min
 Response: 4680069
 Conc: 327.25 ng/ml



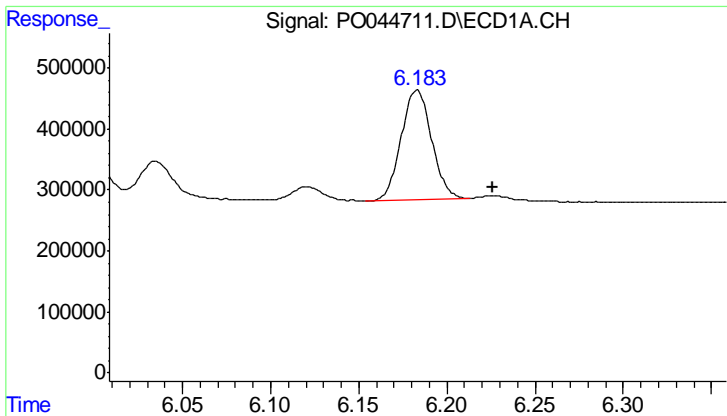
#24 AR-1248-4

R.T.: 6.035 min
 Delta R.T.: 0.000 min
 Response: 1058203
 Conc: 150.75 ng/ml



#24 AR-1248-4

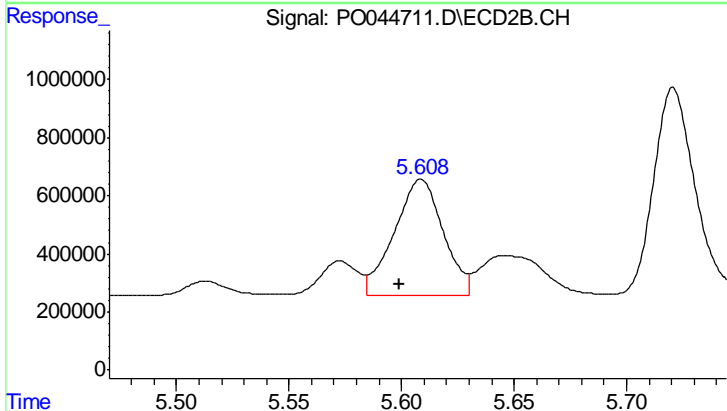
R.T.: 5.111 min
 Delta R.T.: 0.000 min
 Response: 1564708
 Conc: 119.30 ng/ml



#25 AR-1248-5

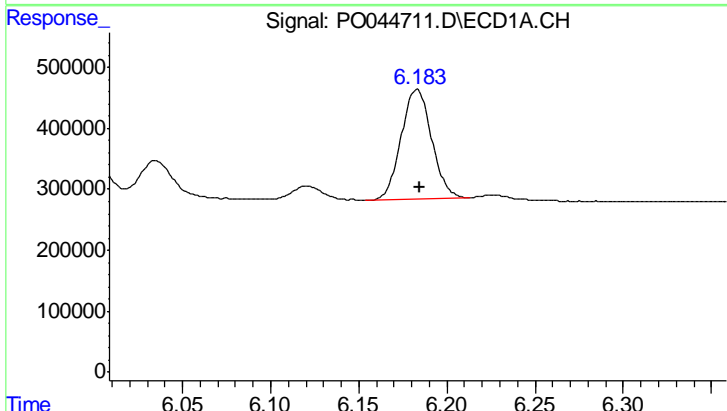
R.T.: 6.183 min
 Delta R.T.: -0.043 min
 Response: 2146618
 Conc: 488.77 ng/ml

Instrument :
 ECD_O
 ClientSampled :
 AR1660CCC500



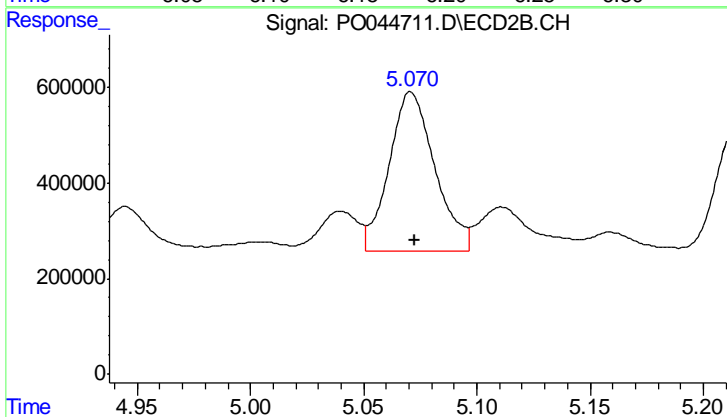
#25 AR-1248-5

R.T.: 5.609 min
 Delta R.T.: 0.010 min
 Response: 6072592
 Conc: 852.94 ng/ml



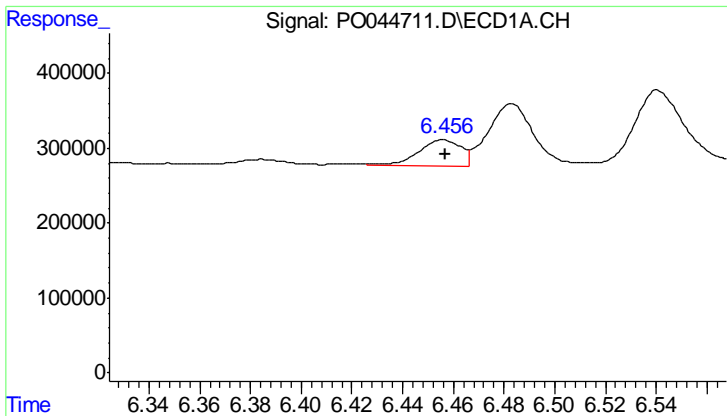
#26 AR-1254-1

R.T.: 6.183 min
 Delta R.T.: -0.002 min
 Response: 2146618
 Conc: 198.85 ng/ml



#26 AR-1254-1

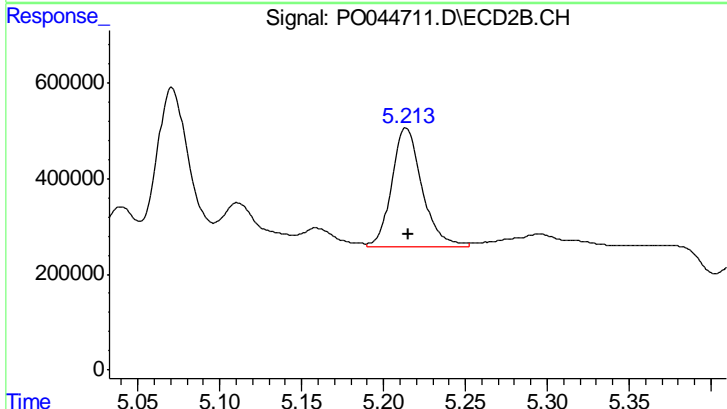
R.T.: 5.071 min
 Delta R.T.: -0.001 min
 Response: 4680069
 Conc: 289.30 ng/ml



#27 AR-1254-2

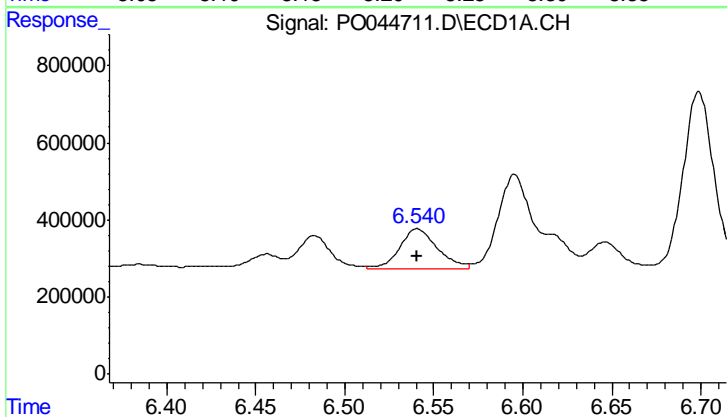
R.T.: 6.456 min
 Delta R.T.: 0.000 min
 Response: 394649
 Conc: 54.25 ng/ml

Instrument :
 ECD_O
 ClientSampleId :
 AR1660CCC500



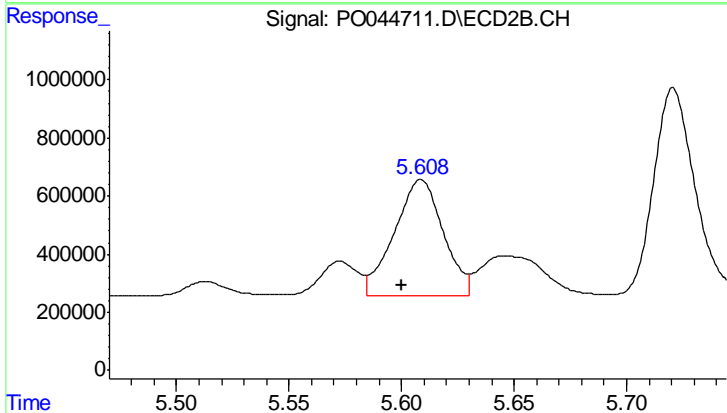
#27 AR-1254-2

R.T.: 5.214 min
 Delta R.T.: -0.001 min
 Response: 3182682
 Conc: 225.88 ng/ml



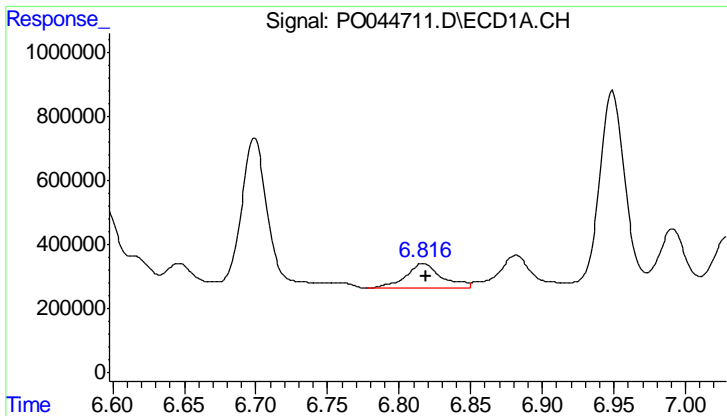
#28 AR-1254-3

R.T.: 6.541 min
 Delta R.T.: 0.000 min
 Response: 1536291
 Conc: 123.93 ng/ml



#28 AR-1254-3

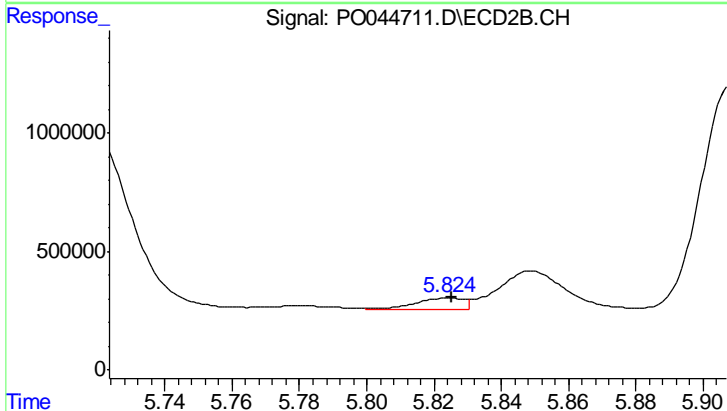
R.T.: 5.609 min
 Delta R.T.: 0.009 min
 Response: 6072592
 Conc: 259.67 ng/ml



#29 AR-1254-4

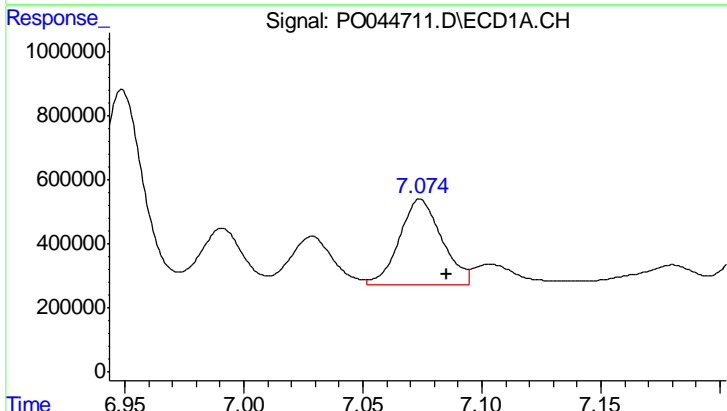
R.T.: 6.817 min
 Delta R.T.: -0.002 min
 Response: 1336624
 Conc: 129.57 ng/ml

Instrument :
 ECD_O
 ClientSampleId :
 AR1660CCC500



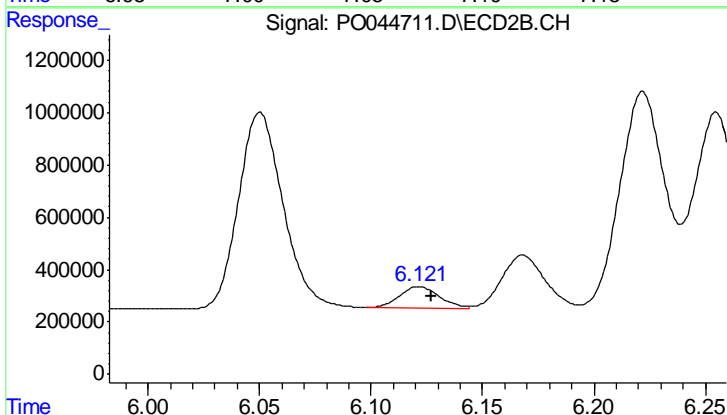
#29 AR-1254-4

R.T.: 5.824 min
 Delta R.T.: -0.001 min
 Response: 475949
 Conc: 25.49 ng/ml



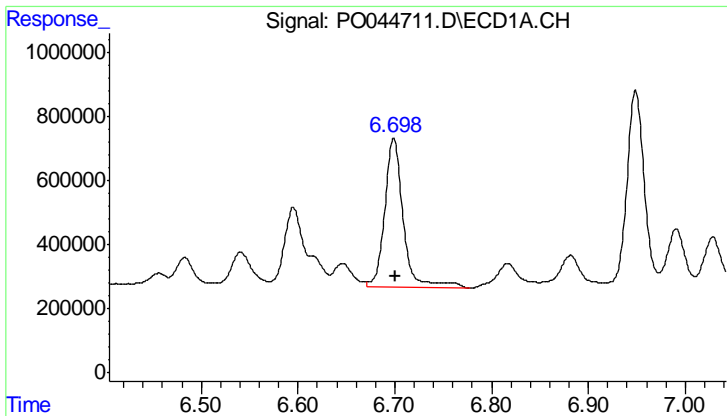
#30 AR-1254-5

R.T.: 7.074 min
 Delta R.T.: -0.011 min
 Response: 3349300
 Conc: 433.97 ng/ml



#30 AR-1254-5

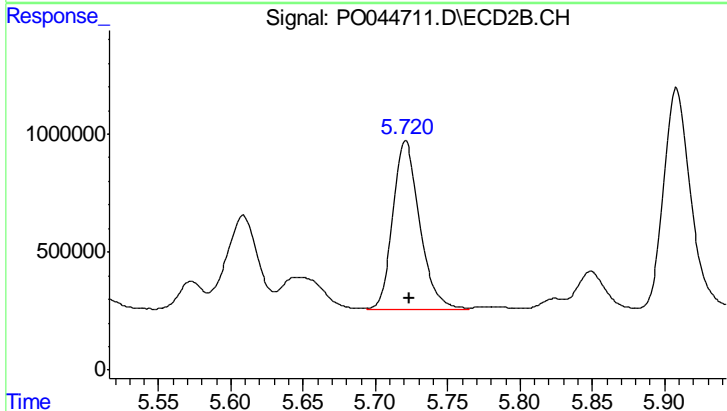
R.T.: 6.121 min
 Delta R.T.: -0.006 min
 Response: 1036719
 Conc: 94.40 ng/ml



#31 AR-1260-1

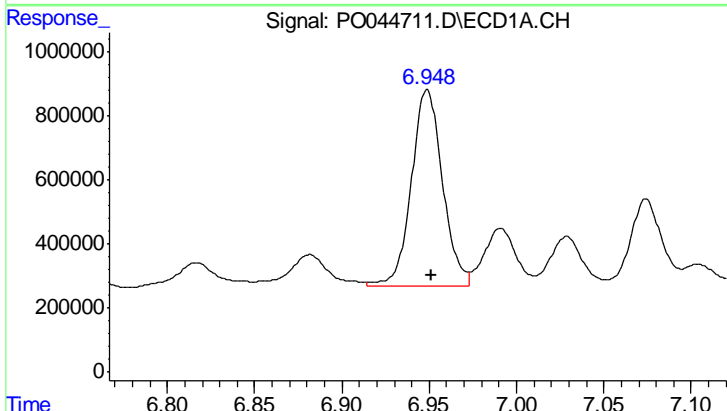
R.T.: 6.699 min
 Delta R.T.: -0.002 min
 Response: 6278654
 Conc: 671.09 ng/ml

Instrument :
 ECD_O
 ClientSampleId :
 AR1660CCC500



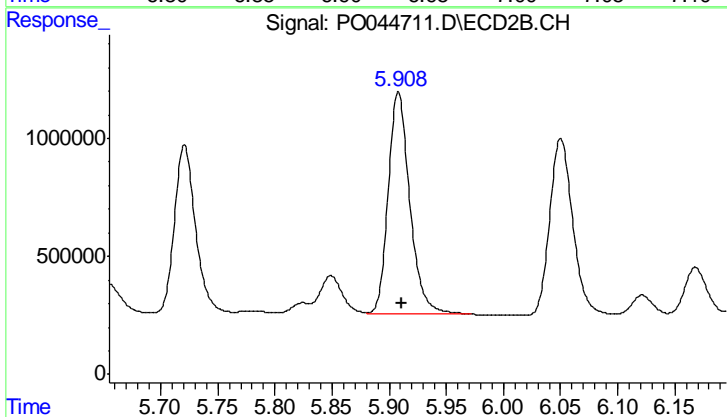
#31 AR-1260-1

R.T.: 5.721 min
 Delta R.T.: -0.003 min
 Response: 9260733
 Conc: 583.73 ng/ml



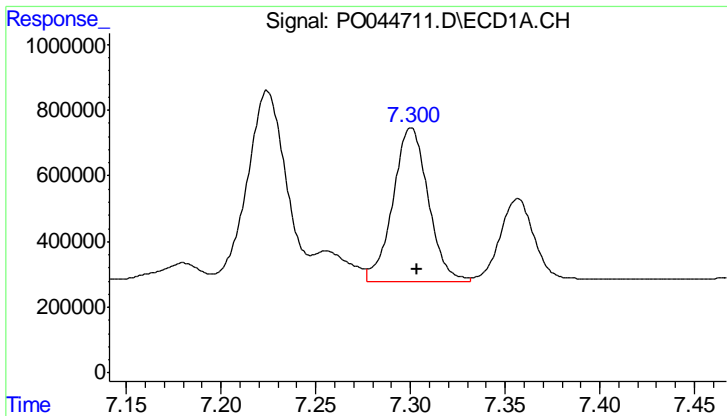
#32 AR-1260-2

R.T.: 6.949 min
 Delta R.T.: -0.003 min
 Response: 7635340
 Conc: 602.33 ng/ml



#32 AR-1260-2

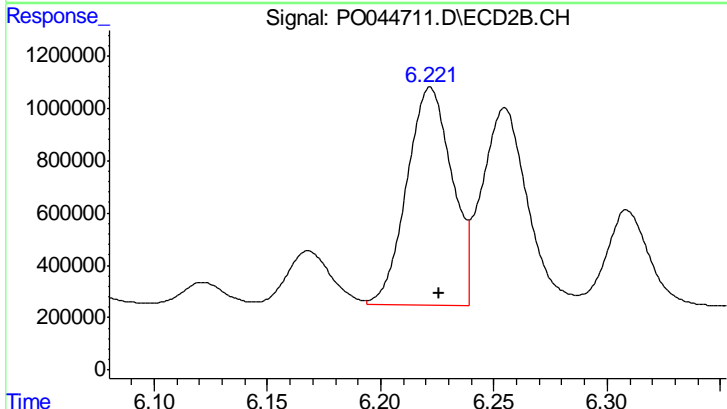
R.T.: 5.908 min
 Delta R.T.: -0.003 min
 Response: 12354359
 Conc: 569.15 ng/ml



#33 AR-1260-3

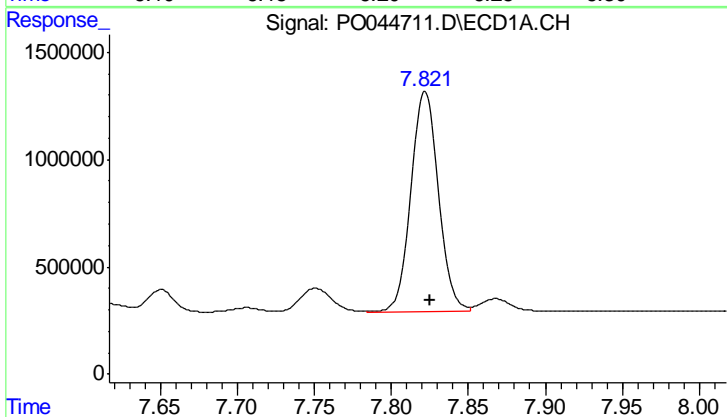
R.T.: 7.300 min
 Delta R.T.: -0.003 min
 Response: 6090777
 Conc: 578.71 ng/ml

Instrument :
 ECD_O
 ClientSampled :
 AR1660CCC500



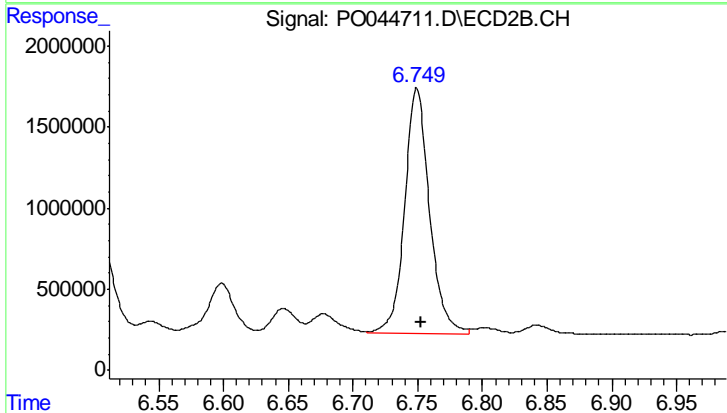
#33 AR-1260-3

R.T.: 6.222 min
 Delta R.T.: -0.004 min
 Response: 11586714
 Conc: 539.41 ng/ml



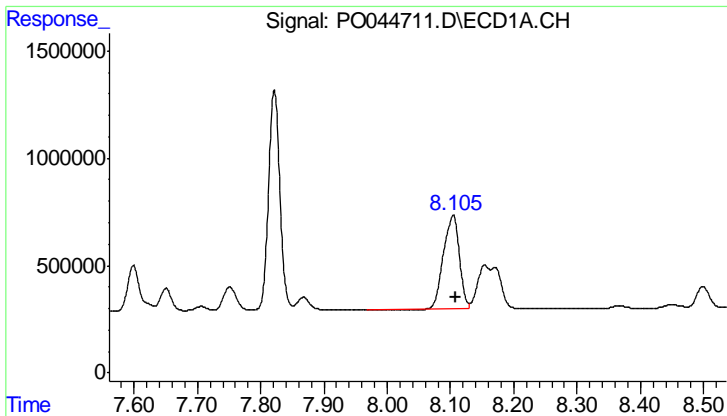
#34 AR-1260-4

R.T.: 7.822 min
 Delta R.T.: -0.003 min
 Response: 12779453
 Conc: 538.99 ng/ml



#34 AR-1260-4

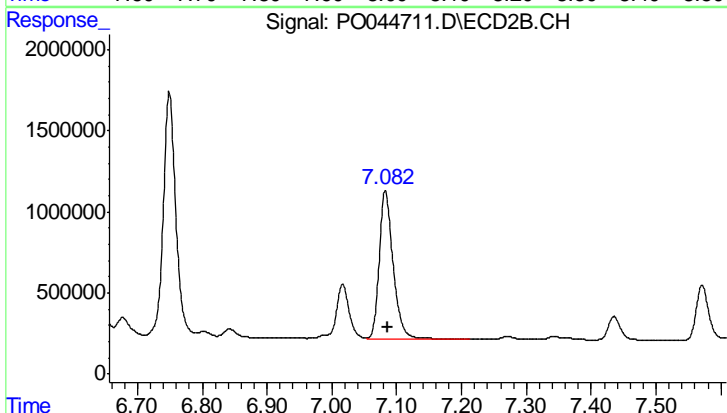
R.T.: 6.749 min
 Delta R.T.: -0.003 min
 Response: 20239156
 Conc: 476.89 ng/ml



#35 AR-1260-5

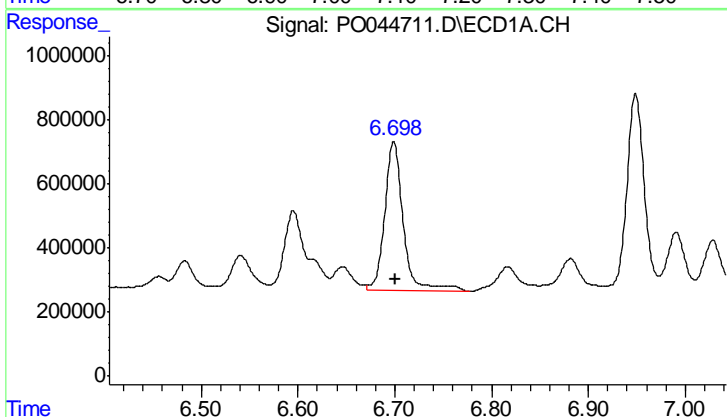
R.T.: 8.105 min
 Delta R.T.: -0.004 min
 Response: 7650729
 Conc: 524.21 ng/ml

Instrument :
 ECD_O
 ClientSampleId :
 AR1660CCC500



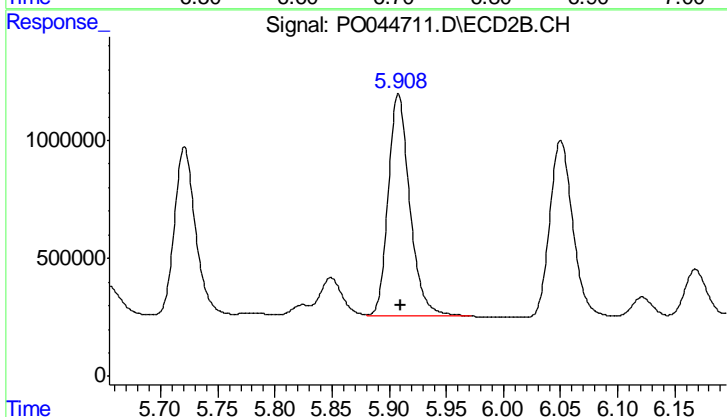
#35 AR-1260-5

R.T.: 7.083 min
 Delta R.T.: -0.003 min
 Response: 13471181
 Conc: 463.16 ng/ml



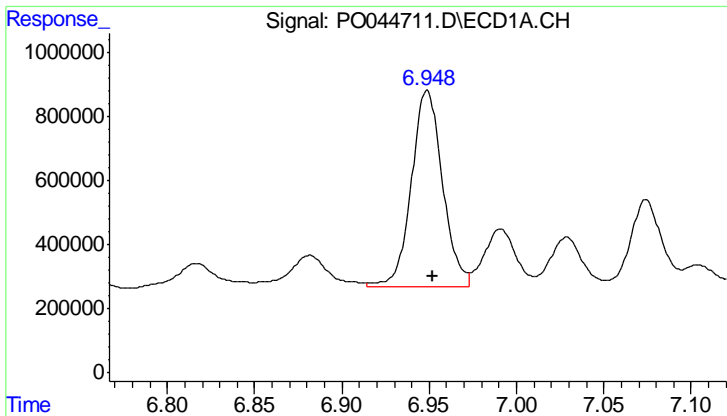
#36 AR-1262-1

R.T.: 6.699 min
 Delta R.T.: -0.002 min
 Response: 6278654
 Conc: 798.65 ng/ml



#36 AR-1262-1

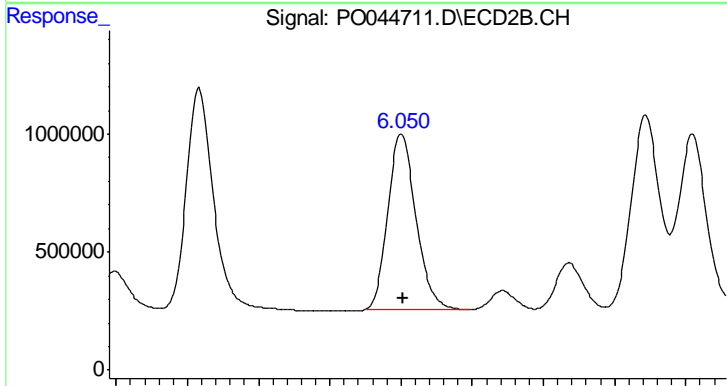
R.T.: 5.908 min
 Delta R.T.: -0.002 min
 Response: 12354359
 Conc: 688.48 ng/ml



#37 AR-1262-2

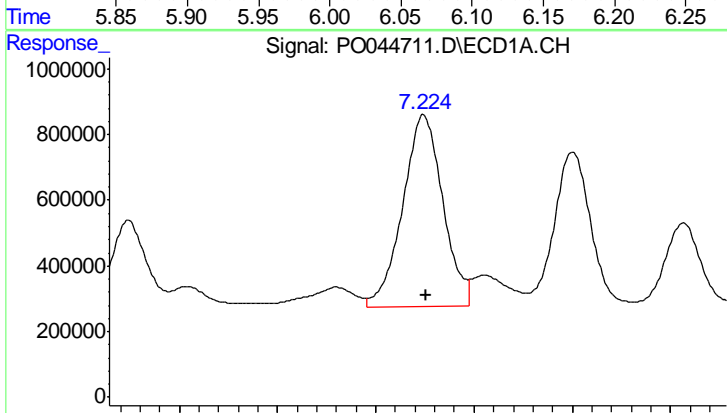
R.T.: 6.949 min
 Delta R.T.: -0.003 min
 Response: 7635340
 Conc: 724.86 ng/ml

Instrument :
 ECD_O
 ClientSampleId :
 AR1660CCC500



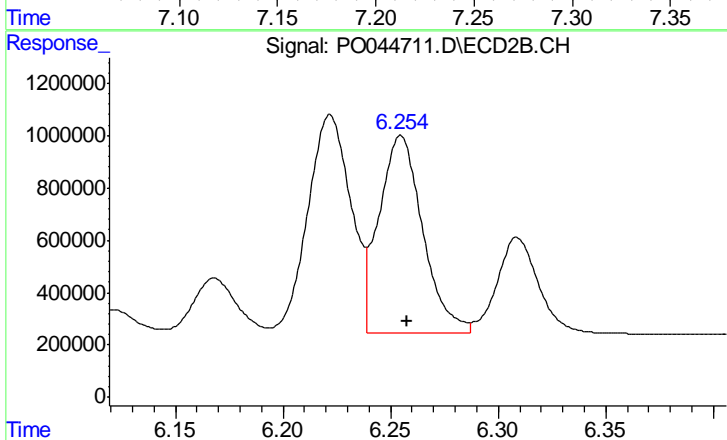
#37 AR-1262-2

R.T.: 6.050 min
 Delta R.T.: -0.001 min
 Response: 10264887
 Conc: 609.35 ng/ml



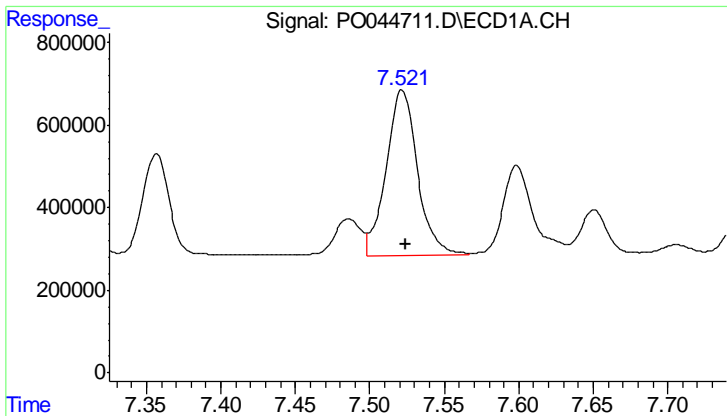
#38 AR-1262-3

R.T.: 7.224 min
 Delta R.T.: -0.001 min
 Response: 8328204
 Conc: 829.64 ng/ml



#38 AR-1262-3

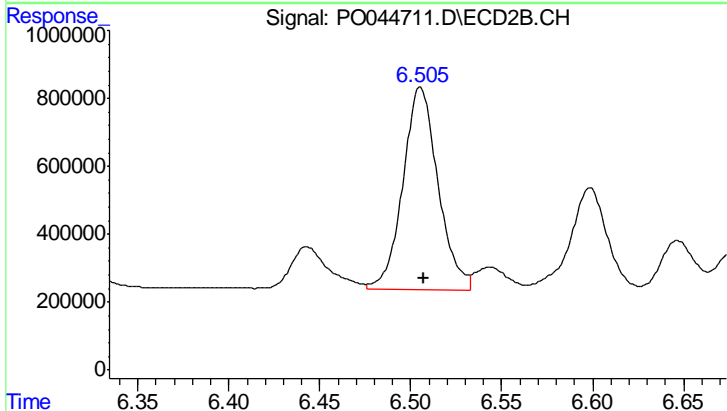
R.T.: 6.255 min
 Delta R.T.: -0.003 min
 Response: 10629650
 Conc: 358.33 ng/ml



#39 AR-1262-4

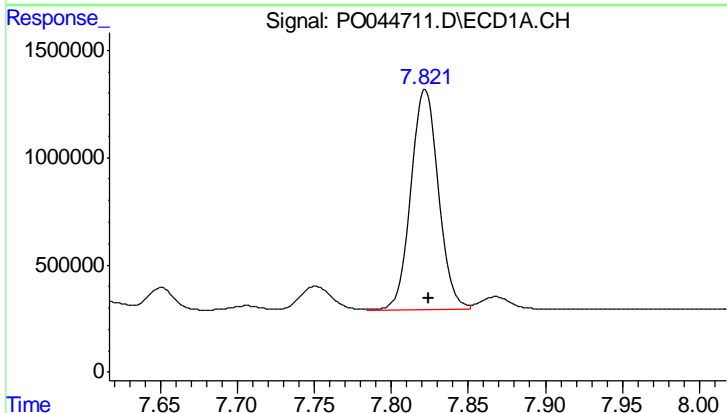
R.T.: 7.521 min
 Delta R.T.: -0.003 min
 Response: 5857533
 Conc: 419.22 ng/ml

Instrument :
 ECD_O
 ClientSampled :
 AR1660CCC500



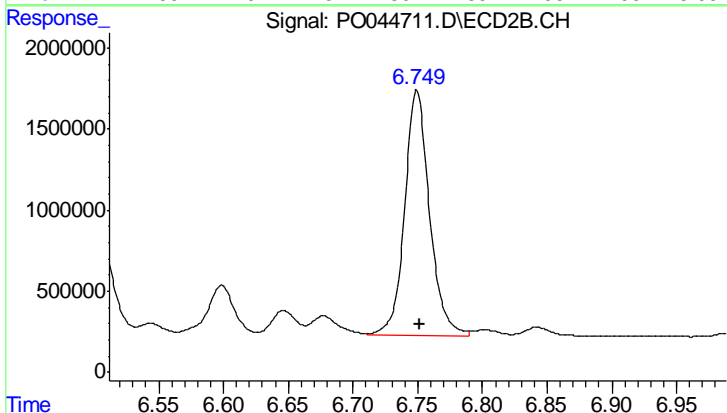
#39 AR-1262-4

R.T.: 6.505 min
 Delta R.T.: -0.002 min
 Response: 7992386
 Conc: 327.17 ng/ml



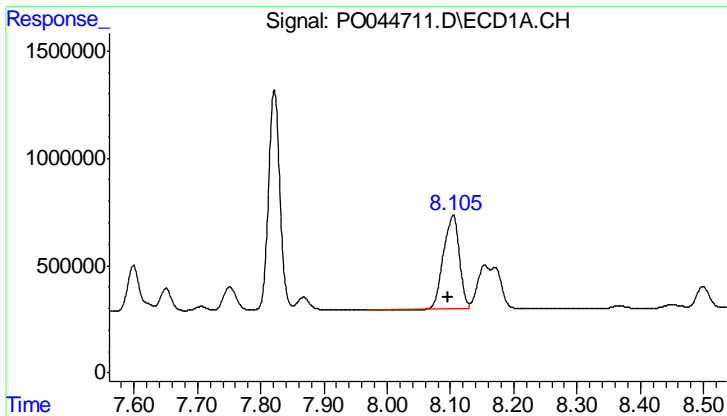
#40 AR-1262-5

R.T.: 7.822 min
 Delta R.T.: -0.003 min
 Response: 12779453
 Conc: 419.53 ng/ml



#40 AR-1262-5

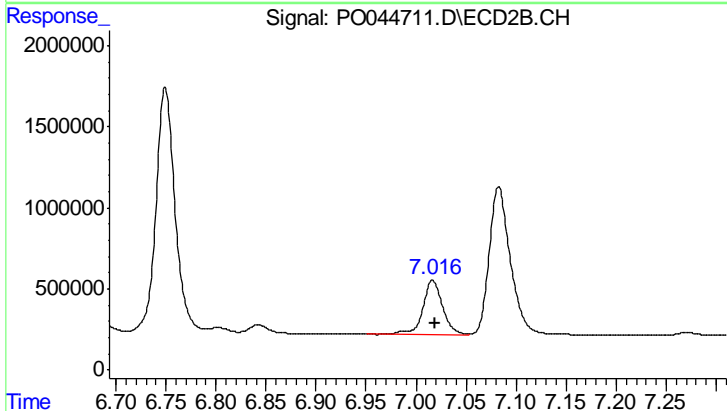
R.T.: 6.749 min
 Delta R.T.: -0.002 min
 Response: 20239156
 Conc: 370.59 ng/ml



#41 AR-1268-1

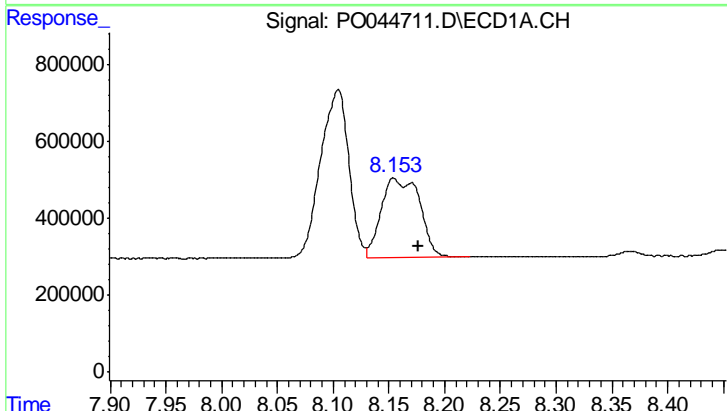
R.T.: 8.105 min
 Delta R.T.: 0.009 min
 Response: 7650729
 Conc: 231.69 ng/ml

Instrument :
 ECD_O
 ClientSampled :
 AR1660CCC500



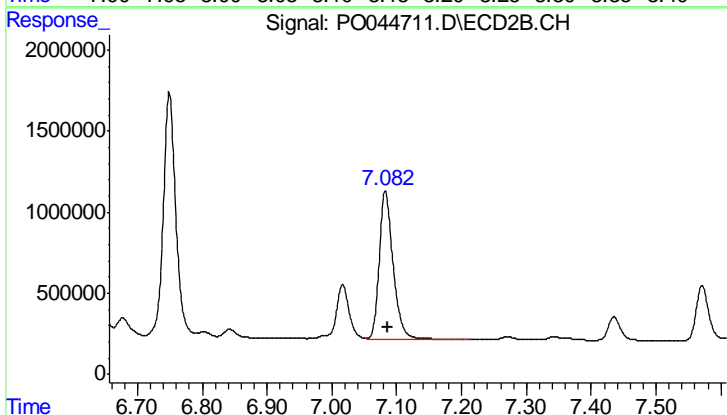
#41 AR-1268-1

R.T.: 7.017 min
 Delta R.T.: -0.003 min
 Response: 4597500
 Conc: 78.87 ng/ml



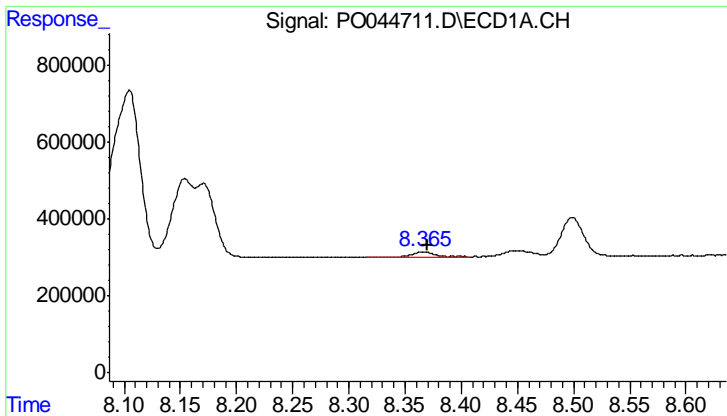
#42 AR-1268-2

R.T.: 8.155 min
 Delta R.T.: -0.022 min
 Response: 4909149
 Conc: 164.35 ng/ml



#42 AR-1268-2

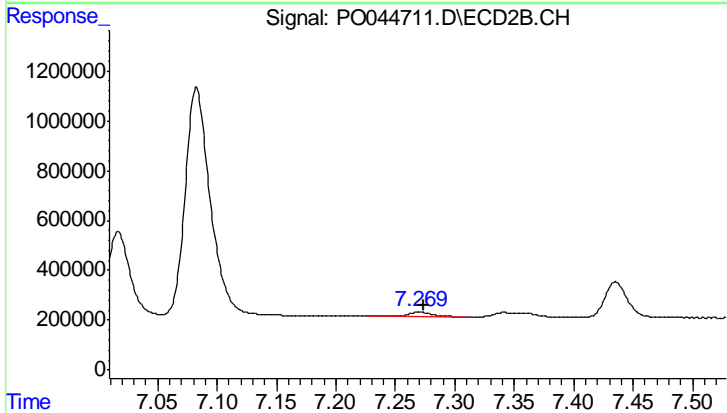
R.T.: 7.083 min
 Delta R.T.: -0.003 min
 Response: 13471181
 Conc: 249.79 ng/ml



#43 AR-1268-3

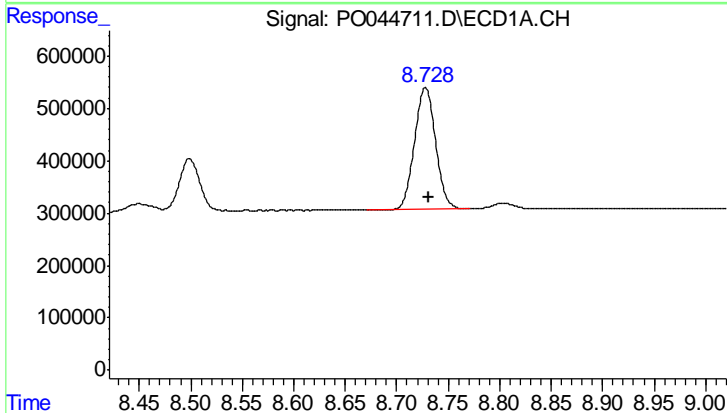
R.T.: 8.366 min
 Delta R.T.: -0.003 min
 Response: 163863
 Conc: 6.24 ng/ml

Instrument :
 ECD_O
 ClientSampleId :
 AR1660CCC500



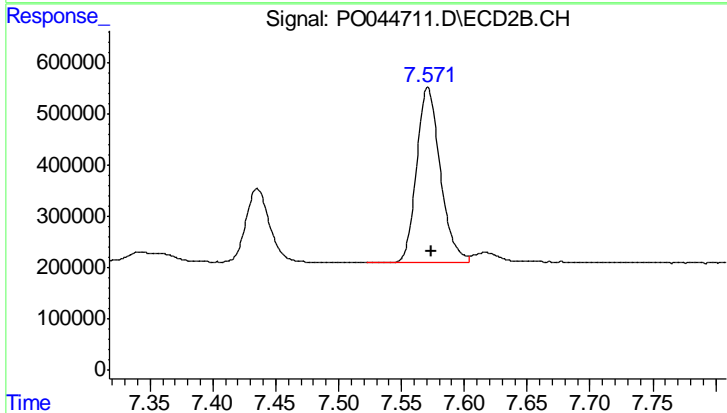
#43 AR-1268-3

R.T.: 7.270 min
 Delta R.T.: -0.004 min
 Response: 224173
 Conc: 4.75 ng/ml



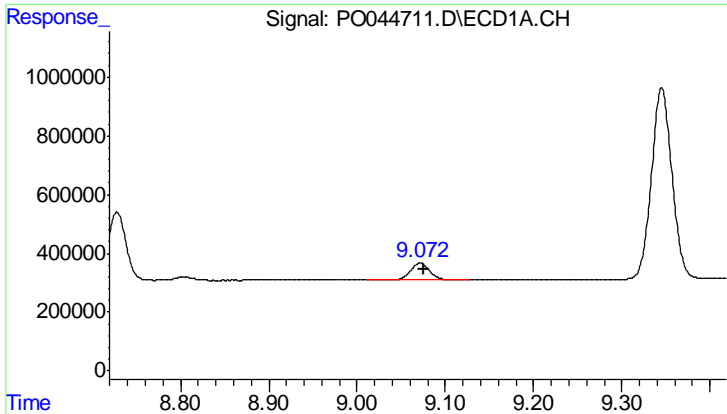
#44 AR-1268-4

R.T.: 8.728 min
 Delta R.T.: -0.004 min
 Response: 3337248
 Conc: 300.63 ng/ml



#44 AR-1268-4

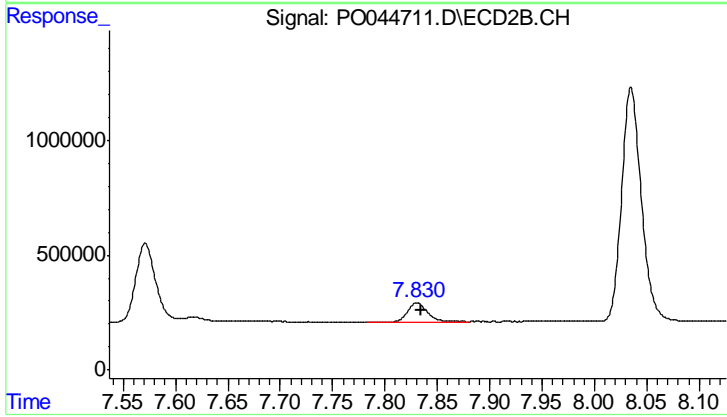
R.T.: 7.571 min
 Delta R.T.: -0.003 min
 Response: 4467268
 Conc: 238.23 ng/ml



#45 AR-1268-5

R.T.: 9.072 min
Delta R.T.: -0.004 min
Response: 846980
Conc: 10.99 ng/ml

Instrument :
ECD_O
ClientSampleId :
AR1660CCC500



#45 AR-1268-5

R.T.: 7.831 min
Delta R.T.: -0.004 min
Response: 1068524
Conc: 8.09 ng/ml