

Data Path : P:\HPCHEM1\ECD O\Data\PO051518\  
 Data File : PO044679.D  
 Signal(s) : Signal #1: ECD1A.CH Signal #2: ECD2B.CH  
 Acq On : 15 May 2018 13:20  
 Operator : SM/UA  
 Sample : AR1221ICC500  
 Misc :  
 ALS Vial : 9 Sample Multiplier: 1

Instrument :  
 ECD\_O  
 ClientSampleId :  
 AR1221ICC500

Integration File signal 1: autoint1.e  
 Integration File signal 2: autoint2.e  
 Quant Time: May 15 14:04:52 2018  
 Quant Method : P:\HPCHEM1\ECD\_O\methods\PO051518.M  
 Quant Title : GC EXTRACTABLES  
 QLast Update : Tue May 15 14:03:12 2018  
 Response via : Initial Calibration  
 Integrator: ChemStation 6890 Scale Mode: Small noise peaks clipped

Volume Inj. : 2 ul  
 Signal #1 Phase : ZB-MR1 Signal #2 Phase: ZB-MR2  
 Signal #1 Info : 30Mx0.32mmx 0.50µ Signal #2 Info : 30M x 0.32mm x 0.25µm

Compound	RT#1	RT#2	Resp#1	Resp#2	ng/ml	ng/ml
-----						
System Monitoring Compounds						
1) SA Tetrachlo...	4.033	3.298	12281022	19391979	50.000	50.000
2) SA Decachlor...	9.349	8.038	14962692	21612689	50.000	50.000
Target Compounds						
8) L2 AR-1221-1	4.234	3.499	1526016	2260695	500.000	500.000
9) L2 AR-1221-2	4.318	3.579	1111896	1626353	500.000	500.000
10) L2 AR-1221-3	4.390	3.649	3675662	5440555	500.000	500.000
-----						

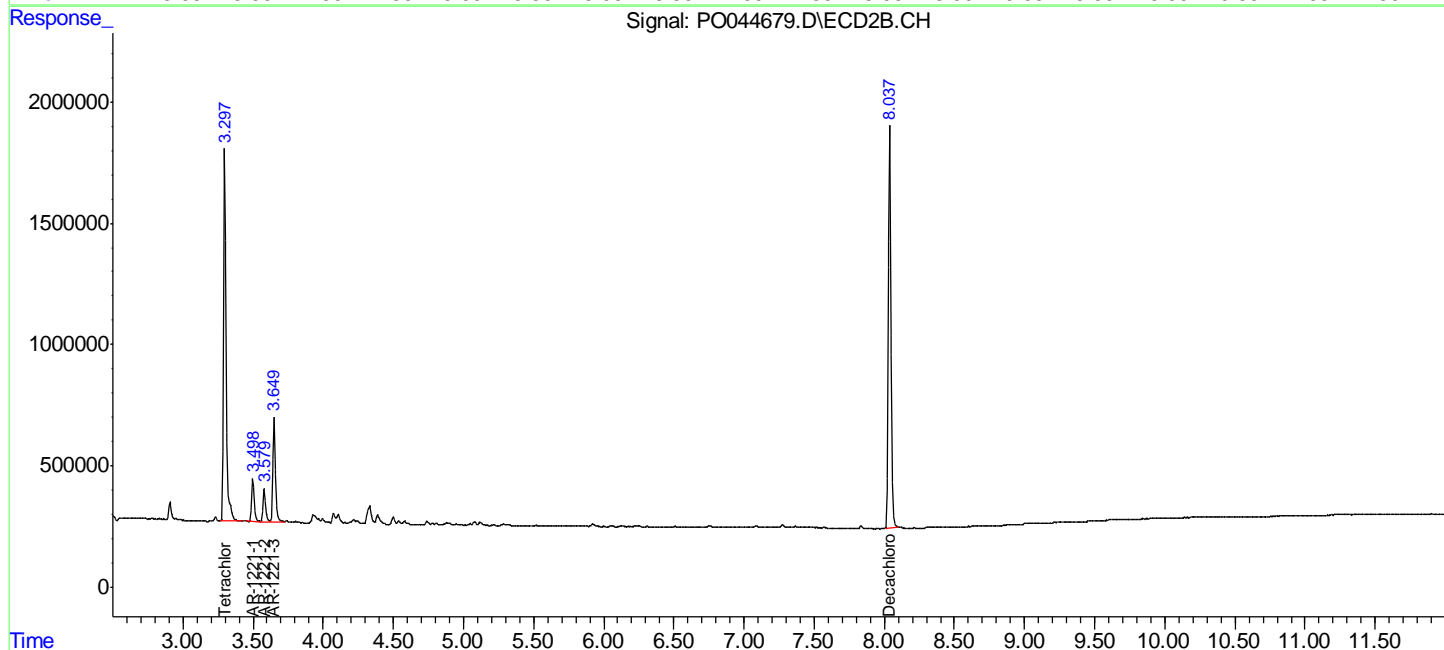
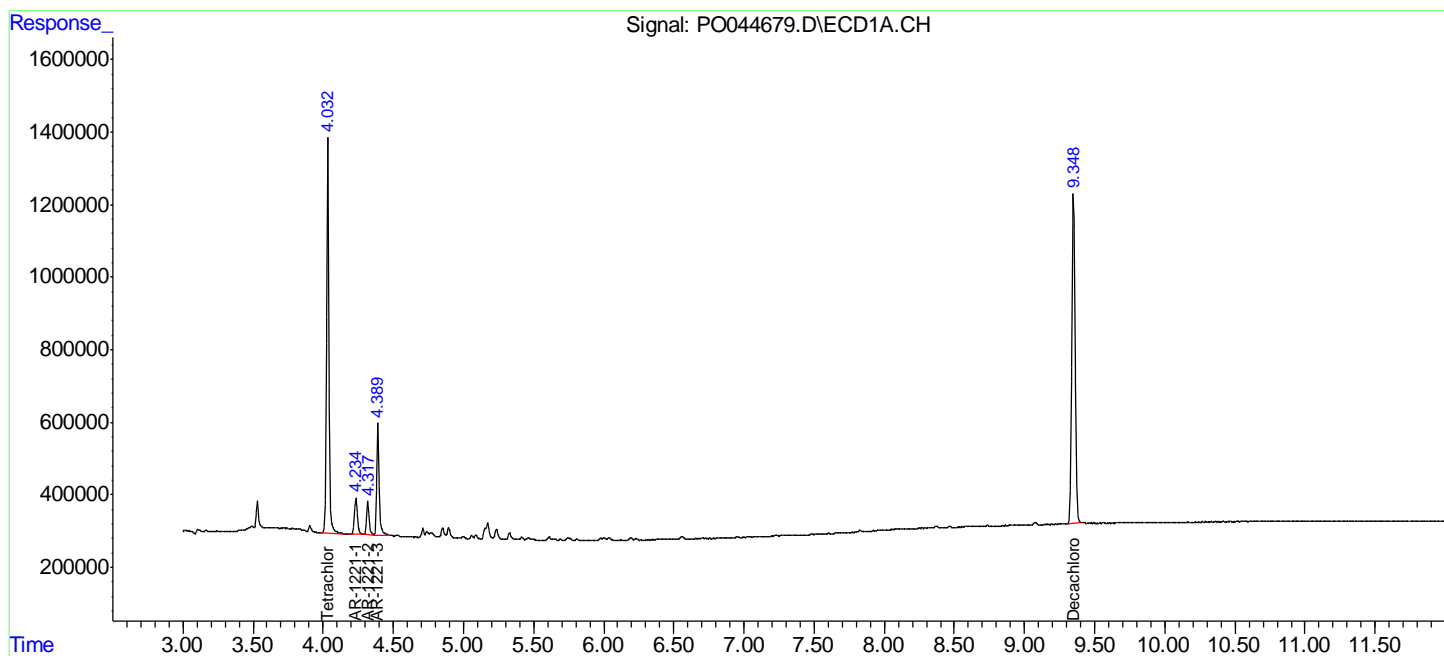
(f)=RT Delta > 1/2 Window (#)=Amounts differ by > 25% (m)=manual int.

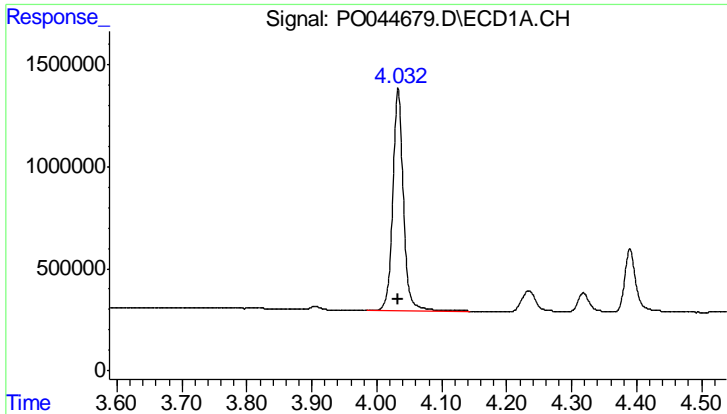
Data Path : P:\HPCHEM1\ECD O\Data\PO051518\  
 Data File : PO044679.D  
 Signal(s) : Signal #1: ECD1A.CH Signal #2: ECD2B.CH  
 Acq On : 15 May 2018 13:20  
 Operator : SM/UA  
 Sample : AR1221ICC500  
 Misc :  
 ALS Vial : 9 Sample Multiplier: 1

Instrument :  
 ECD\_O  
 ClientSampled :  
 AR1221ICC500

Integration File signal 1: autoint1.e  
 Integration File signal 2: autoint2.e  
 Quant Time: May 15 14:04:52 2018  
 Quant Method : P:\HPCHEM1\ECD\_O\methods\PO051518.M  
 Quant Title : GC EXTRACTABLES  
 QLast Update : Tue May 15 14:03:12 2018  
 Response via : Initial Calibration  
 Integrator: ChemStation 6890 Scale Mode: Small noise peaks clipped

Volume Inj. : 2 µl  
 Signal #1 Phase : ZB-MR1 Signal #2 Phase: ZB-MR2  
 Signal #1 Info : 30Mx0.32mmx 0.50µ Signal #2 Info : 30M x 0.32mm x 0.25µm

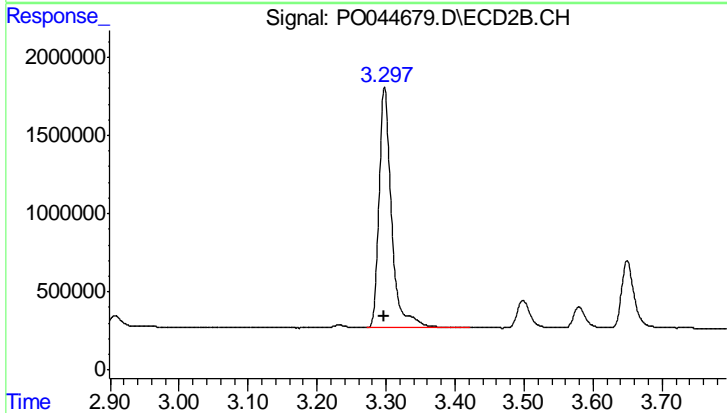




#1 Tetrachloro-m-xylene

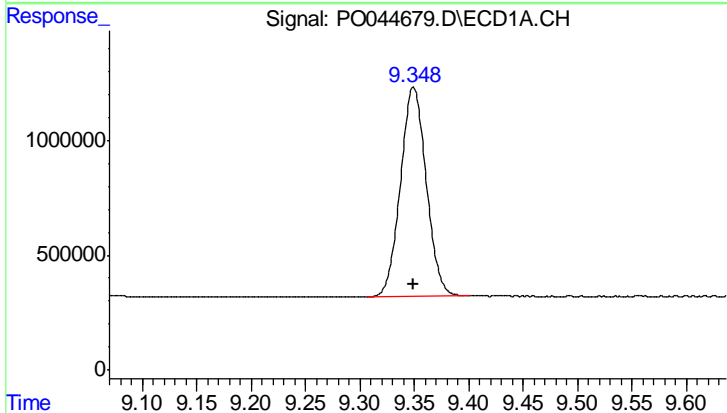
R.T.: 4.033 min  
 Delta R.T.: 0.000 min  
 Response: 12281022  
 Conc: 50.00 ng/ml

Instrument :  
 ECD\_O  
 ClientSampleId :  
 AR1221ICC500



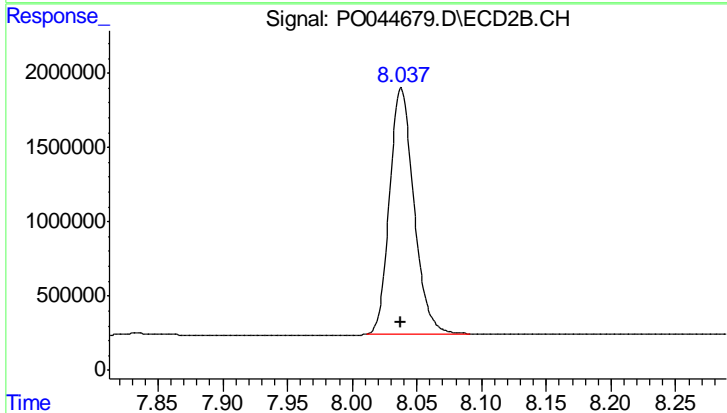
#1 Tetrachloro-m-xylene

R.T.: 3.298 min  
 Delta R.T.: 0.000 min  
 Response: 19391979  
 Conc: 50.00 ng/ml



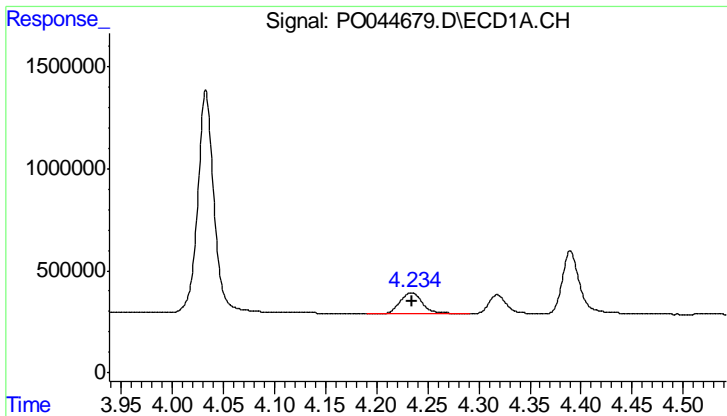
#2 Decachlorobiphenyl

R.T.: 9.349 min  
 Delta R.T.: 0.000 min  
 Response: 14962692  
 Conc: 50.00 ng/ml



#2 Decachlorobiphenyl

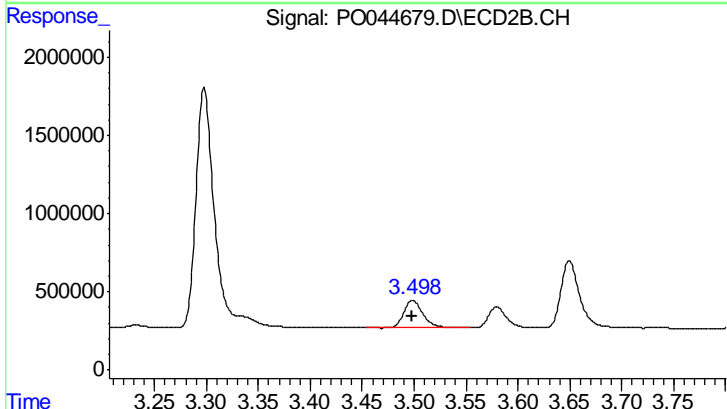
R.T.: 8.038 min  
 Delta R.T.: 0.000 min  
 Response: 21612689  
 Conc: 50.00 ng/ml



#8 AR-1221-1

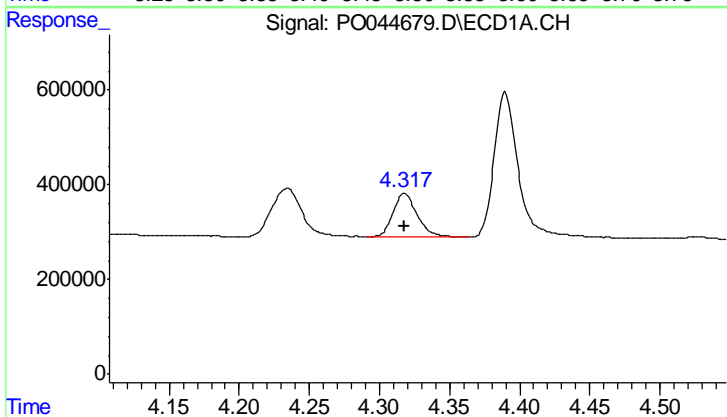
R.T.: 4.234 min  
 Delta R.T.: 0.000 min  
 Response: 1526016  
 Conc: 500.00 ng/ml

Instrument :  
 ECD\_O  
 ClientSampleId :  
 AR1221ICC500



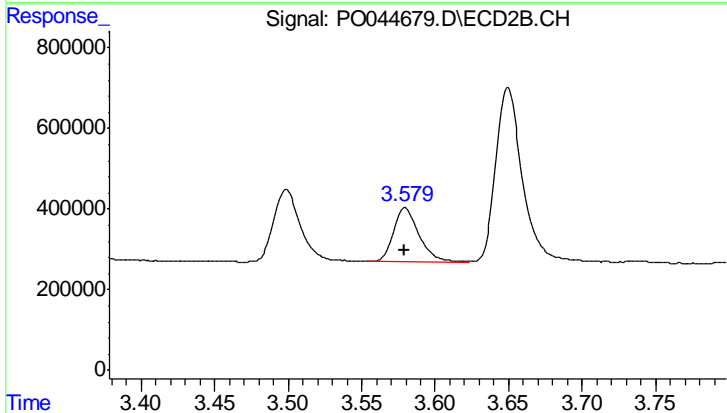
#8 AR-1221-1

R.T.: 3.499 min  
 Delta R.T.: 0.000 min  
 Response: 2260695  
 Conc: 500.00 ng/ml



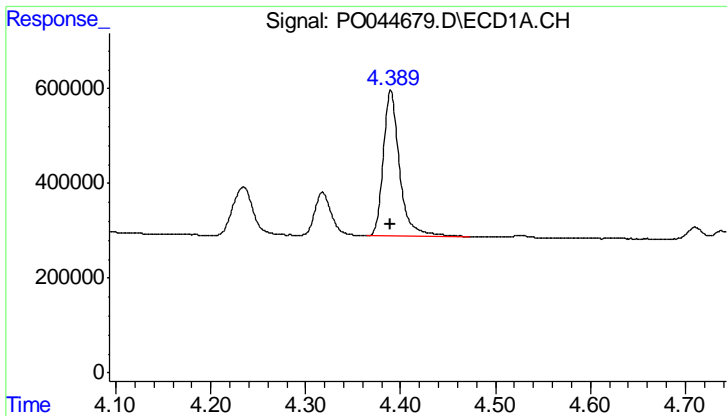
#9 AR-1221-2

R.T.: 4.318 min  
 Delta R.T.: 0.000 min  
 Response: 1111896  
 Conc: 500.00 ng/ml



#9 AR-1221-2

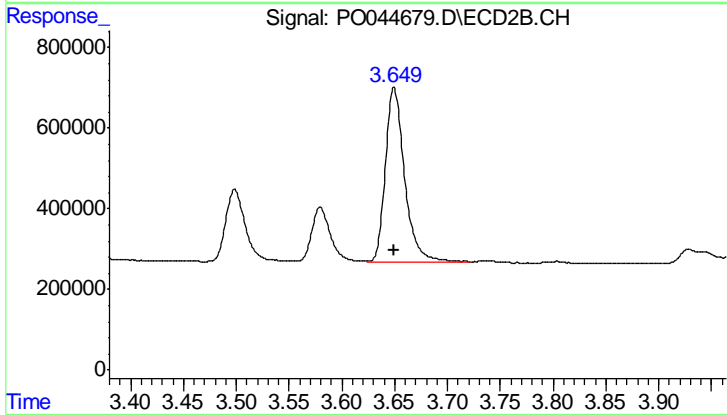
R.T.: 3.579 min  
 Delta R.T.: 0.000 min  
 Response: 1626353  
 Conc: 500.00 ng/ml



#10 AR-1221-3

R.T.: 4.390 min  
Delta R.T.: 0.000 min  
Response: 3675662  
Conc: 500.00 ng/ml

Instrument :  
ECD\_O  
ClientSampled :  
AR1221ICC500



#10 AR-1221-3

R.T.: 3.649 min  
Delta R.T.: 0.000 min  
Response: 5440555  
Conc: 500.00 ng/ml