

Data Path : P:\HPCHEM1\ECD O\Data\PO051518\
 Data File : PO044709.D
 Signal(s) : Signal #1: ECD1A.CH Signal #2: ECD2B.CH
 Acq On : 15 May 2018 22:11
 Operator : SM/UA
 Sample : J2888-29
 Misc :
 ALS Vial : 35 Sample Multiplier: 1

Instrument :
 ECD_O
 ClientSampleId :
 26KV-S2

Integration File signal 1: autoint1.e
 Integration File signal 2: autoint2.e
 Quant Time: May 16 03:56:32 2018
 Quant Method : P:\HPCHEM1\ECD_O\methods\PO051518.M
 Quant Title : GC EXTRACTABLES
 QLast Update : Tue May 15 15:44:07 2018
 Response via : Initial Calibration
 Integrator: ChemStation 6890 Scale Mode: Small noise peaks clipped

Volume Inj. : 2 µl
 Signal #1 Phase : ZB-MR1 Signal #2 Phase: ZB-MR2
 Signal #1 Info : 30Mx0.32mmx 0.50µ Signal #2 Info : 30M x 0.32mm x 0.25µm

Compound	RT#1	RT#2	Resp#1	Resp#2	nq/ml	nq/ml

System Monitoring Compounds						
1) SA Tetrachlo...	4.032	3.297	4853564	7009774	31.673	29.241
2) SA Decachlor...	9.346	8.035	5025862	6015328	24.443	21.378

Target Compounds

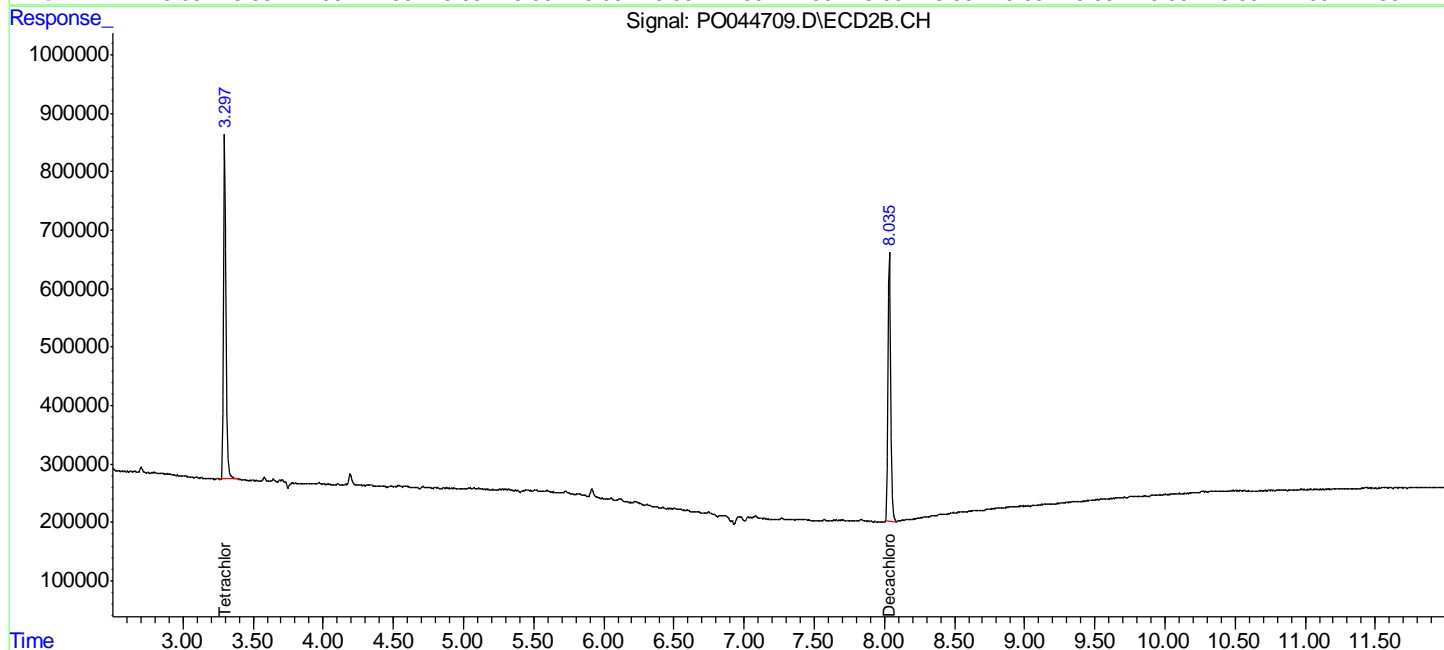
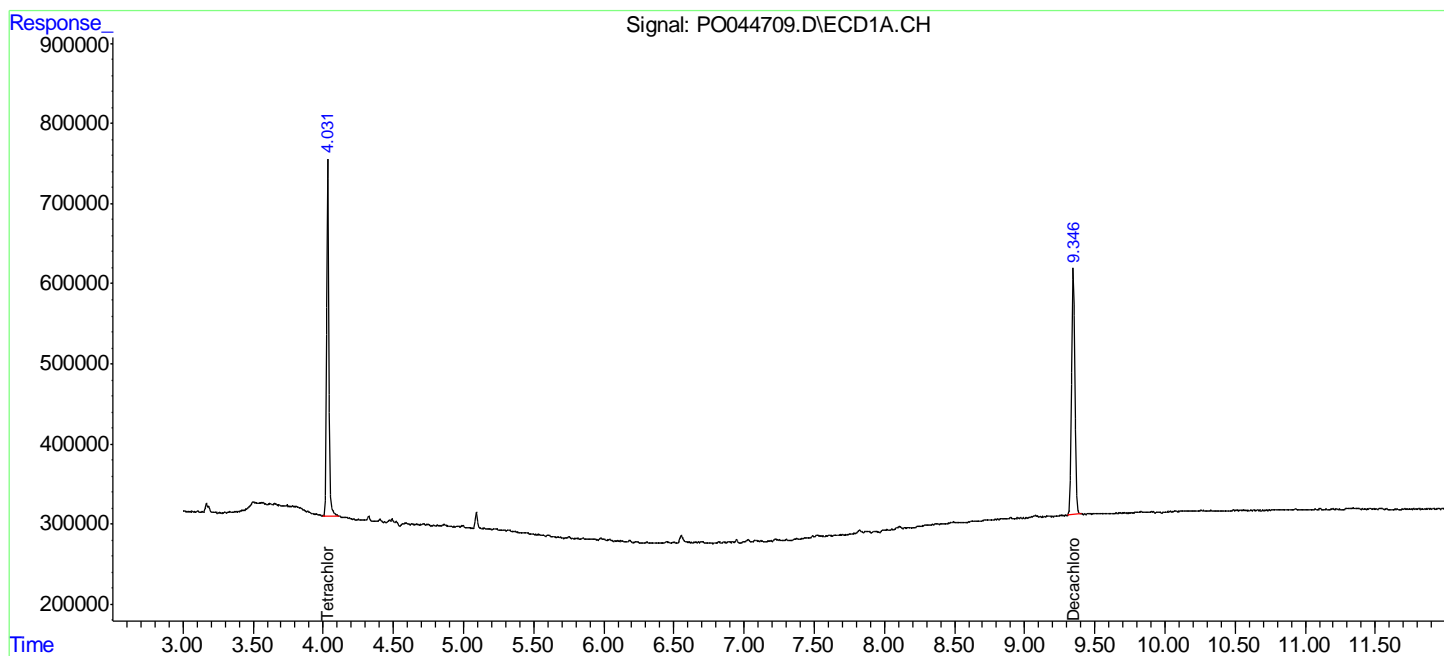
(f)=RT Delta > 1/2 Window (#)=Amounts differ by > 25% (m)=manual int.

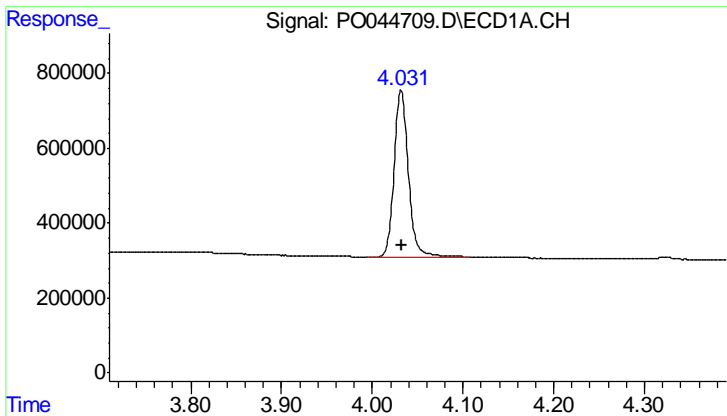
Data Path : P:\HPCHEM1\ECD O\Data\PO051518\
 Data File : PO044709.D
 Signal(s) : Signal #1: ECD1A.CH Signal #2: ECD2B.CH
 Acq On : 15 May 2018 22:11
 Operator : SM/UA
 Sample : J2888-29
 Misc :
 ALS Vial : 35 Sample Multiplier: 1

Instrument :
 ECD_O
 ClientSampleId :
 26KV-S2

Integration File signal 1: autoint1.e
 Integration File signal 2: autoint2.e
 Quant Time: May 16 03:56:32 2018
 Quant Method : P:\HPCHEM1\ECD_O\methods\PO051518.M
 Quant Title : GC EXTRACTABLES
 QLast Update : Tue May 15 15:44:07 2018
 Response via : Initial Calibration
 Integrator: ChemStation 6890 Scale Mode: Small noise peaks clipped

Volume Inj. : 2 µl
 Signal #1 Phase : ZB-MR1 Signal #2 Phase: ZB-MR2
 Signal #1 Info : 30Mx0.32mmx 0.50µ Signal #2 Info : 30M x 0.32mm x 0.25µm

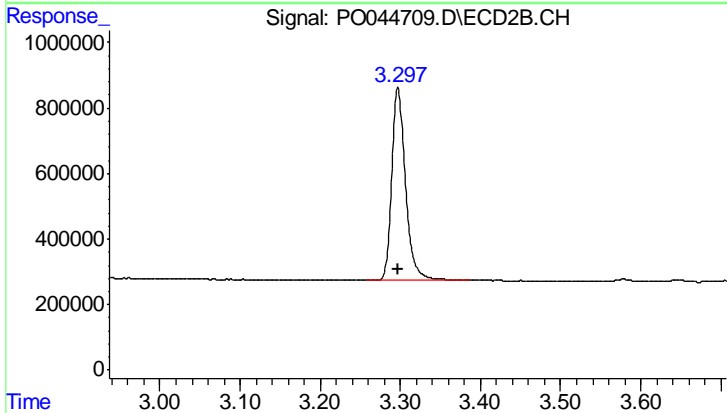




#1 Tetrachloro-m-xylene

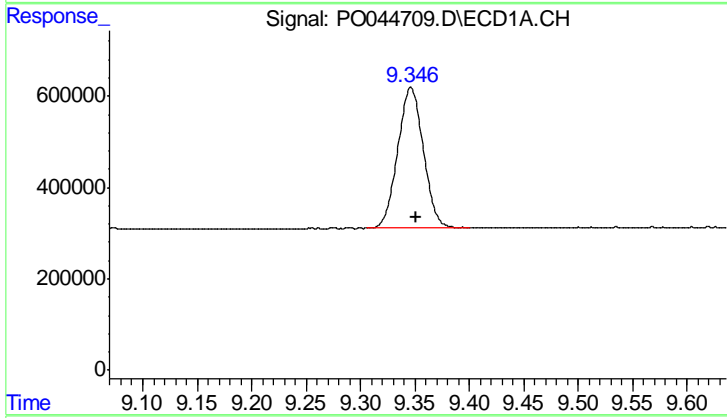
R.T.: 4.032 min
 Delta R.T.: 0.000 min
 Response: 4853564
 Conc: 31.67 ng/ml

Instrument :
 ECD_O
 ClientSampleId :
 26KV-S2



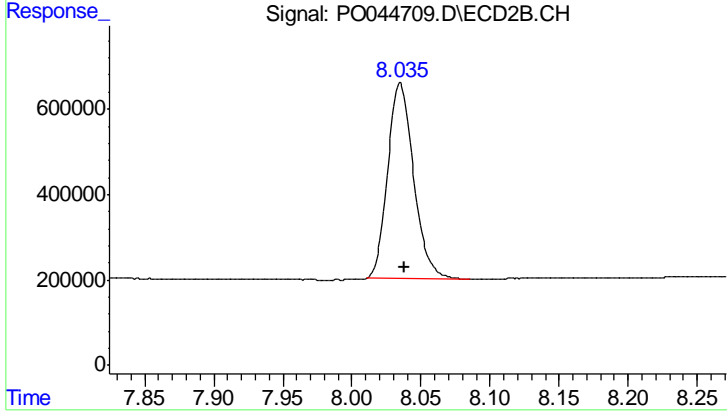
#1 Tetrachloro-m-xylene

R.T.: 3.297 min
 Delta R.T.: 0.000 min
 Response: 7009774
 Conc: 29.24 ng/ml



#2 Decachlorobiphenyl

R.T.: 9.346 min
 Delta R.T.: -0.004 min
 Response: 5025862
 Conc: 24.44 ng/ml



#2 Decachlorobiphenyl

R.T.: 8.035 min
 Delta R.T.: -0.003 min
 Response: 6015328
 Conc: 21.38 ng/ml