

Data Path : P:\HPCHEM1\ECD\_O\Data\PO051618\  
 Data File : PO044728.D  
 Signal(s) : Signal #1: ECD1A.CH Signal #2: ECD2B.CH  
 Acq On : 16 May 2018 13:25  
 Operator : SM/UA  
 Sample : J2901-01  
 Misc :  
 ALS Vial : 6 Sample Multiplier: 1

Instrument :  
 ECD\_O  
 ClientSampleId :  
 251-COMP1-SL

Integration File signal 1: autoint1.e  
 Integration File signal 2: autoint2.e  
 Quant Time: May 16 14:29:33 2018  
 Quant Method : P:\HPCHEM1\ECD\_O\methods\PO051518.M  
 Quant Title : GC EXTRACTABLES  
 QLast Update : Tue May 15 15:44:07 2018  
 Response via : Initial Calibration  
 Integrator: ChemStation 6890 Scale Mode: Small noise peaks clipped

Volume Inj. : 2 µl  
 Signal #1 Phase : ZB-MR1 Signal #2 Phase: ZB-MR2  
 Signal #1 Info : 30Mx0.32mmx 0.50µ Signal #2 Info : 30M x 0.32mm x 0.25µm

Compound	RT#1	RT#2	Resp#1	Resp#2	ng/ml	ng/ml
-----						
System Monitoring Compounds						
1) SA Tetrachlo...	4.032	3.298	3670176	5943358	23.950	24.793
2) SA Decachlor...	9.345	8.034	3506929	3980520	17.056	14.146
Target Compounds						
4) L1 AR-1016-2	0.000	4.538	0	957646	N.D.	177.683 #
5) L1 AR-1016-3	0.000	4.592	0	595387	N.D.	93.285 #
6) L1 AR-1016-4	0.000	4.795	0	587037	N.D.	83.211 #
7) L1 AR-1016-5	5.910	5.036	281164	351674	72.080	47.655 #
12) L3 AR-1232-2	5.092	4.316	582334	1676985	247.555	157.517 #
13) L3 AR-1232-3	0.000	4.365	0	1975905	N.D.	453.516 #
14) L3 AR-1232-4	0.000	4.538	0	957646	N.D.	167.929 #
15) L3 AR-1232-5	0.000	4.592	0	595387	N.D.	209.682 #
17) L4 AR-1242-2	0.000	4.316	0	1676985	N.D.	91.433 #
18) L4 AR-1242-3	0.000	4.492	0	695819	N.D.	111.732 #
19) L4 AR-1242-4	0.000	4.592	0	595387	N.D.	100.737 #
20) L4 AR-1242-5	0.000	4.795	0	587037	N.D.	85.719 #
21) L5 AR-1248-1	0.000	4.795	0	587037	N.D.	63.097 #
22) L5 AR-1248-2	0.000	4.866	0	968996	N.D.	115.482 #
23) L5 AR-1248-3	0.000	5.036	0	351674	N.D.	24.590 #
24) L5 AR-1248-4	0.000	5.120	0	370867	N.D.	28.275 #
25) L5 AR-1248-5	6.228	5.586	332481	1627665	75.704	228.617 #
26) L6 AR-1254-1	6.228	5.036	332481	351674	30.798	21.739 #
27) L6 AR-1254-2	0.000	5.261	0	1627094	N.D.	115.479 #
28) L6 AR-1254-3	0.000	5.586	0	1627665	N.D.	69.600 #
29) L6 AR-1254-4	0.000	5.808	0	1332609	N.D.	71.365 #
31) L7 AR-1260-1	0.000	5.731	0	922451	N.D.	58.144 #
32) L7 AR-1260-2	0.000	5.909	0	1293194	N.D.	59.576 #
36) L8 AR-1262-1	0.000	5.909	0	1293194	N.D.	72.066 #

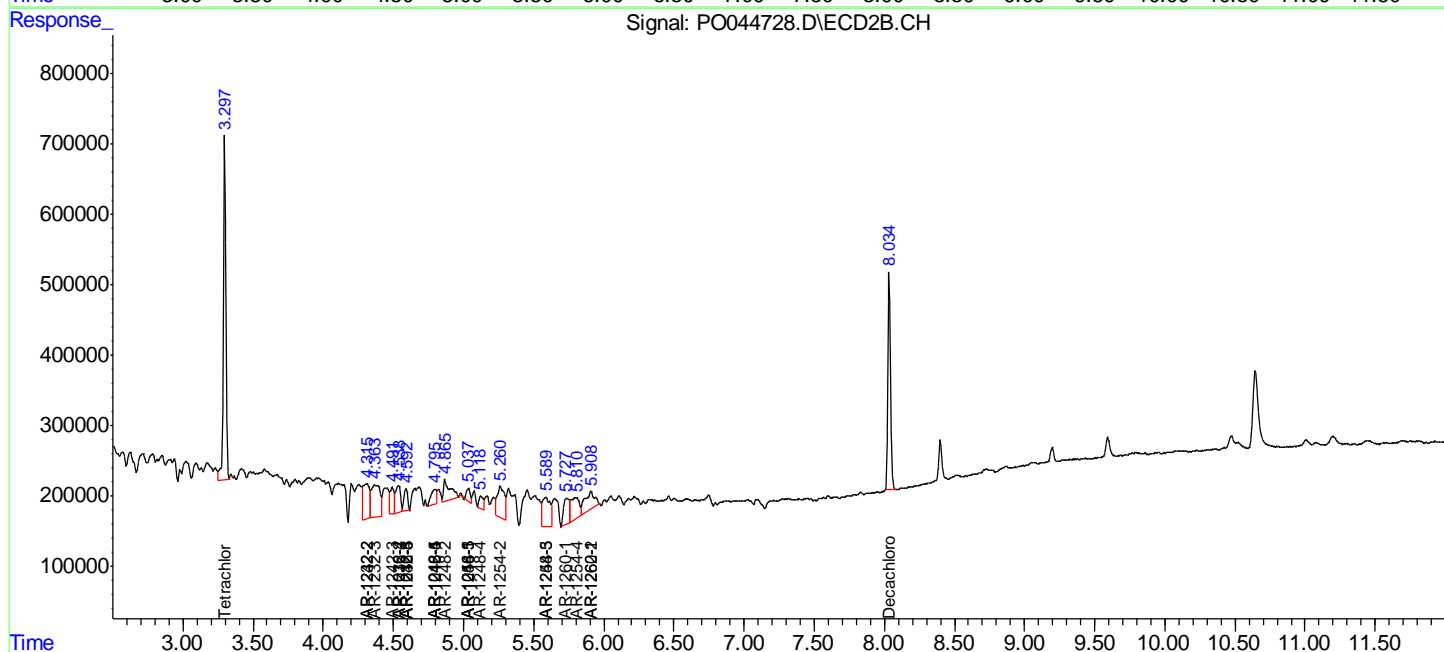
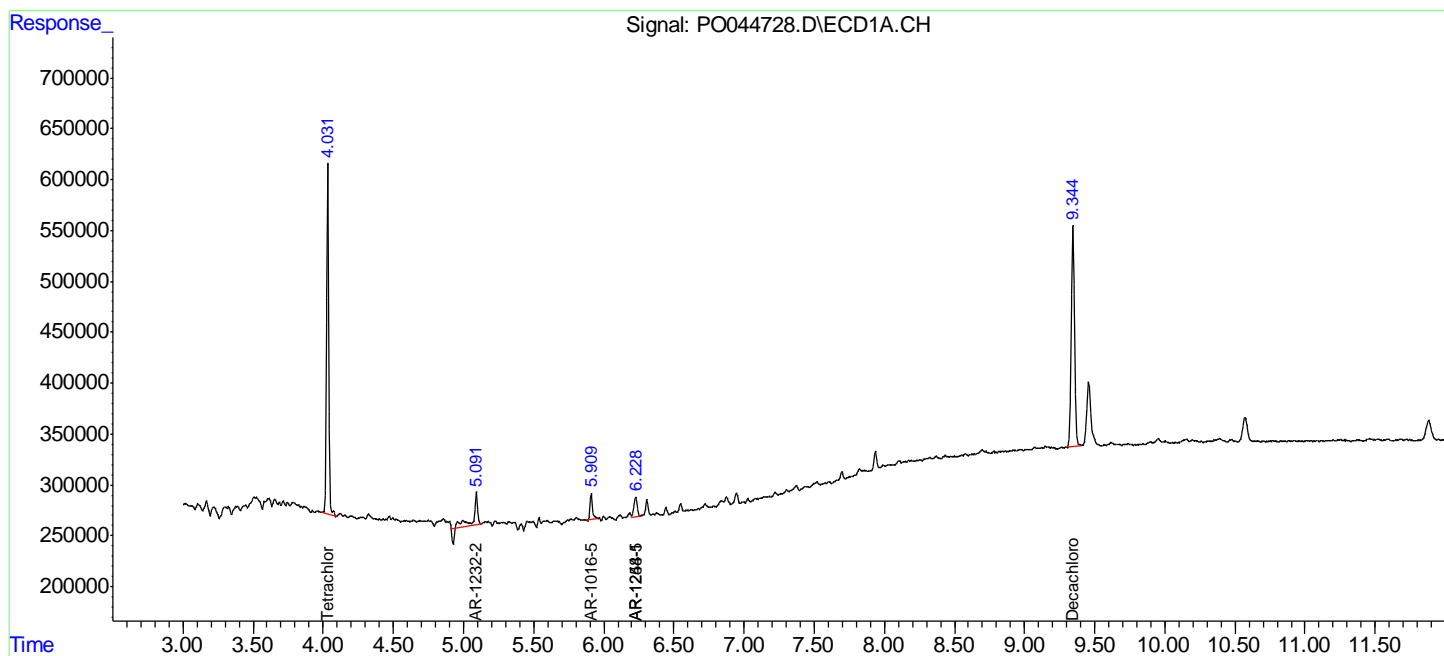
(f)=RT Delta > 1/2 Window (#)=Amounts differ by > 25% (m)=manual int.

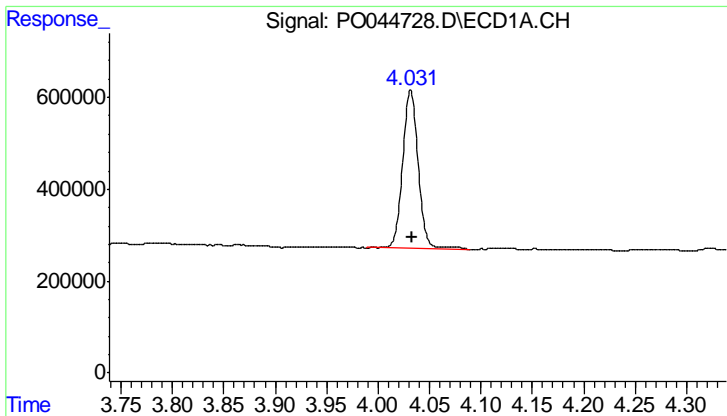
Data Path : P:\HPCHEM1\ECD\_O\Data\PO051618\  
 Data File : PO044728.D  
 Signal(s) : Signal #1: ECD1A.CH Signal #2: ECD2B.CH  
 Acq On : 16 May 2018 13:25  
 Operator : SM/UA  
 Sample : J2901-01  
 Misc :  
 ALS Vial : 6 Sample Multiplier: 1

Instrument :  
 ECD\_O  
 ClientSampled :  
 251-COMP1-SL

Integration File signal 1: autoint1.e  
 Integration File signal 2: autoint2.e  
 Quant Time: May 16 14:29:33 2018  
 Quant Method : P:\HPCHEM1\ECD\_O\methods\PO051518.M  
 Quant Title : GC EXTRACTABLES  
 QLast Update : Tue May 15 15:44:07 2018  
 Response via : Initial Calibration  
 Integrator: ChemStation 6890 Scale Mode: Small noise peaks clipped

Volume Inj. : 2 µl  
 Signal #1 Phase : ZB-MR1 Signal #2 Phase: ZB-MR2  
 Signal #1 Info : 30Mx0.32mmx 0.50µ Signal #2 Info : 30M x 0.32mm x 0.25µm

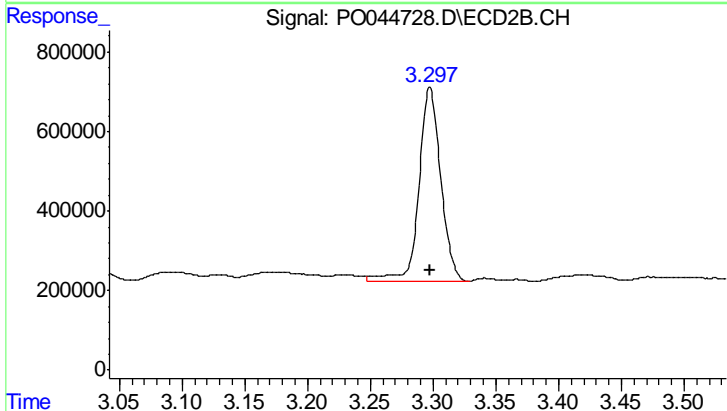




#1 Tetrachloro-m-xylene

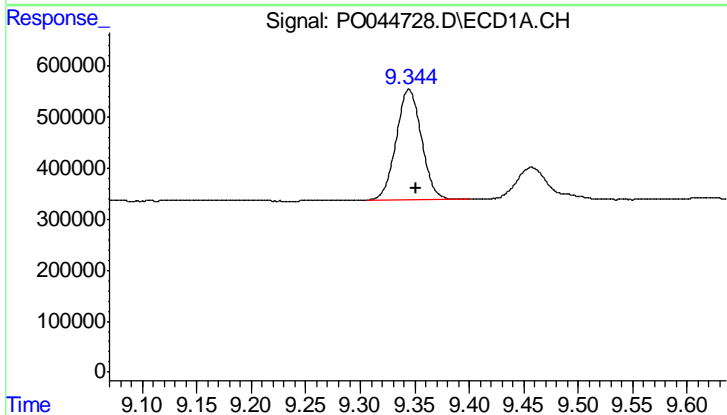
R.T.: 4.032 min  
 Delta R.T.: -0.001 min  
 Response: 3670176  
 Conc: 23.95 ng/ml

Instrument :  
 ECD\_O  
 ClientSampled :  
 251-COMP1-SL



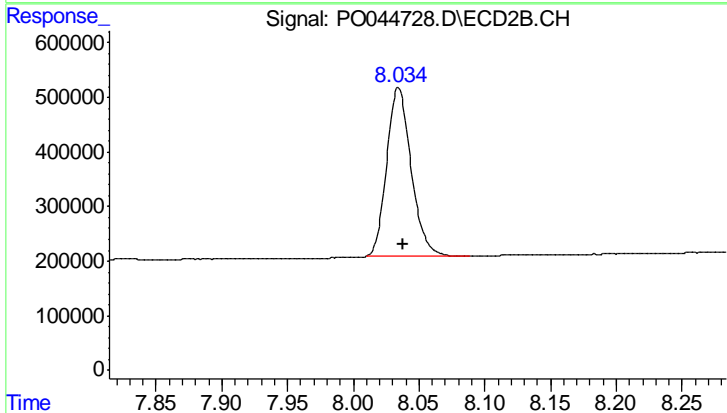
#1 Tetrachloro-m-xylene

R.T.: 3.298 min  
 Delta R.T.: 0.000 min  
 Response: 5943358  
 Conc: 24.79 ng/ml



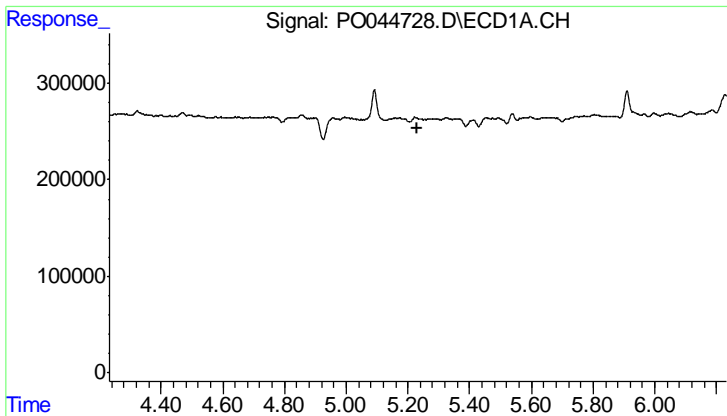
#2 Decachlorobiphenyl

R.T.: 9.345 min  
 Delta R.T.: -0.006 min  
 Response: 3506929  
 Conc: 17.06 ng/ml



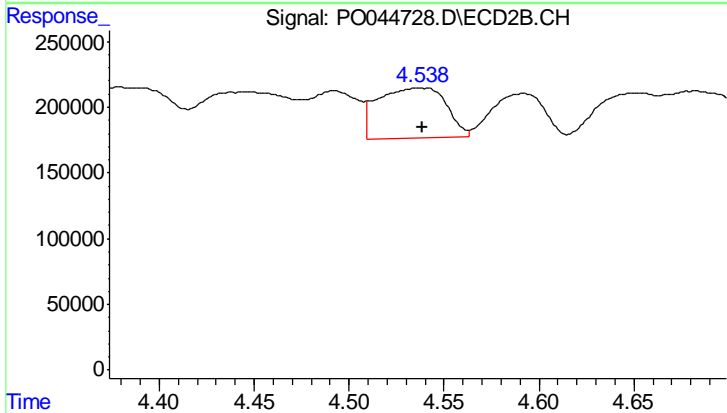
#2 Decachlorobiphenyl

R.T.: 8.034 min  
 Delta R.T.: -0.004 min  
 Response: 3980520  
 Conc: 14.15 ng/ml

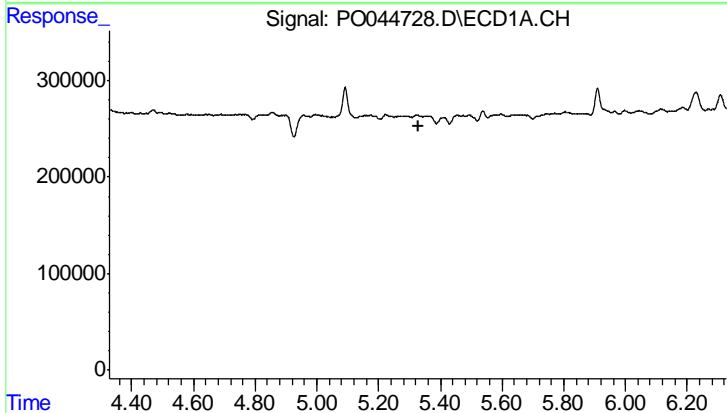


#4 AR-1016-2  
 R.T.: 0.000 min  
 Exp R.T.: 5.232 min  
 Response: 0  
 Conc: N.D.

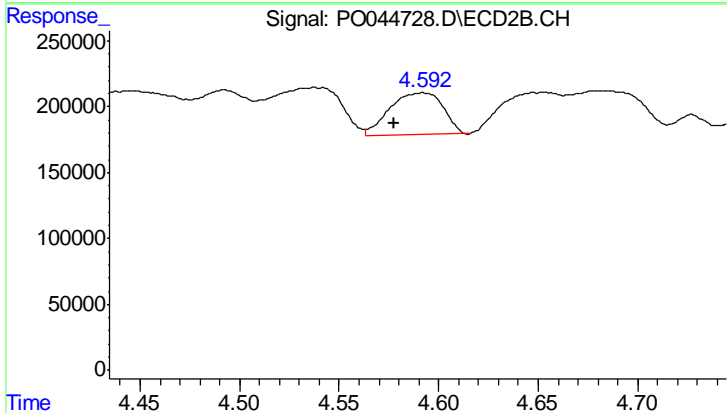
Instrument :  
 ECD\_O  
 ClientSampleId :  
 251-COMP1-SL



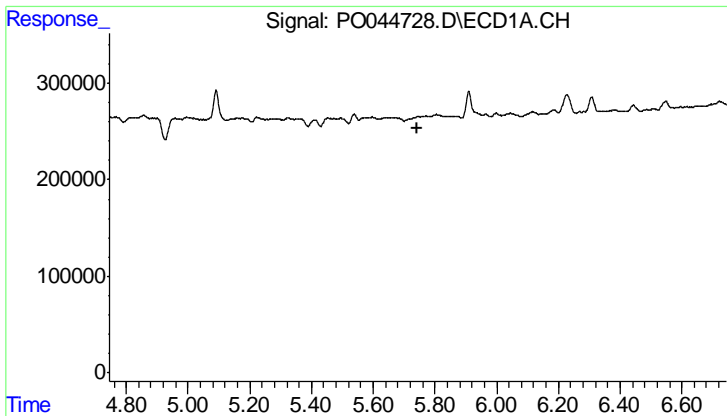
#4 AR-1016-2  
 R.T.: 4.538 min  
 Delta R.T.: -0.001 min  
 Response: 957646  
 Conc: 177.68 ng/ml



#5 AR-1016-3  
 R.T.: 0.000 min  
 Exp R.T.: 5.328 min  
 Response: 0  
 Conc: N.D.

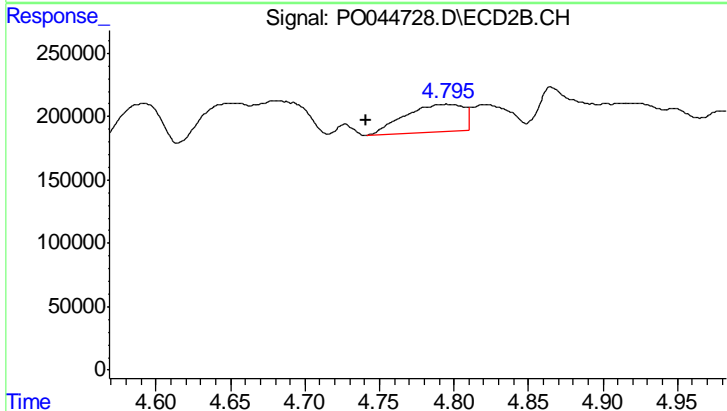


#5 AR-1016-3  
 R.T.: 4.592 min  
 Delta R.T.: 0.014 min  
 Response: 595387  
 Conc: 93.28 ng/ml

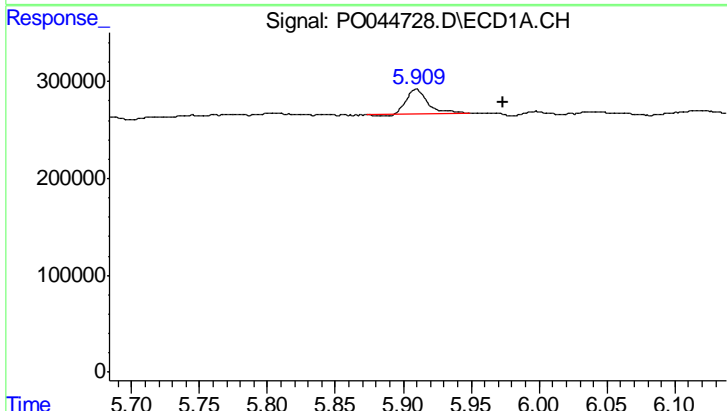


#6 AR-1016-4  
 R.T.: 0.000 min  
 Exp R.T.: 5.745 min  
 Response: 0  
 Conc: N.D.

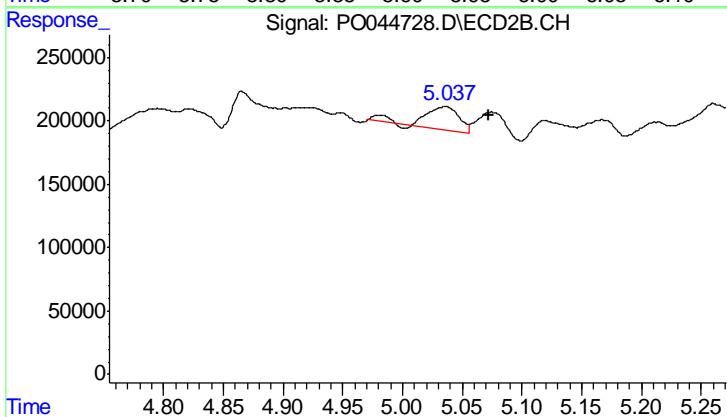
Instrument :  
 ECD\_O  
 ClientSampleId :  
 251-COMP1-SL



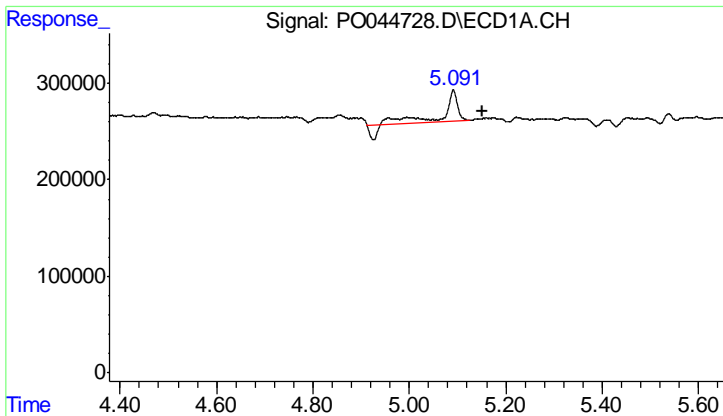
#6 AR-1016-4  
 R.T.: 4.795 min  
 Delta R.T.: 0.054 min  
 Response: 587037  
 Conc: 83.21 ng/ml



#7 AR-1016-5  
 R.T.: 5.910 min  
 Delta R.T.: -0.064 min  
 Response: 281164  
 Conc: 72.08 ng/ml

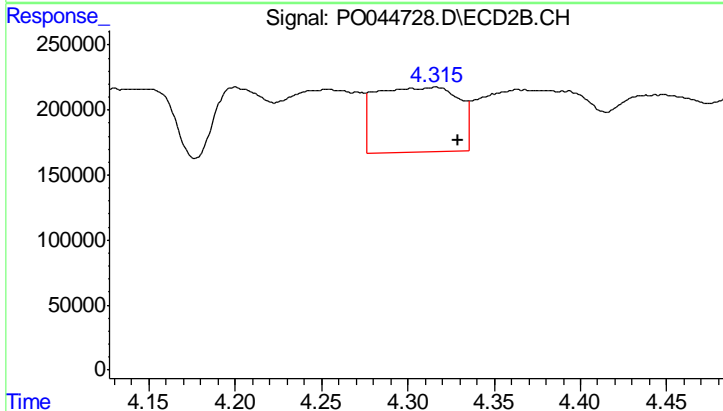


#7 AR-1016-5  
 R.T.: 5.036 min  
 Delta R.T.: -0.037 min  
 Response: 351674  
 Conc: 47.66 ng/ml

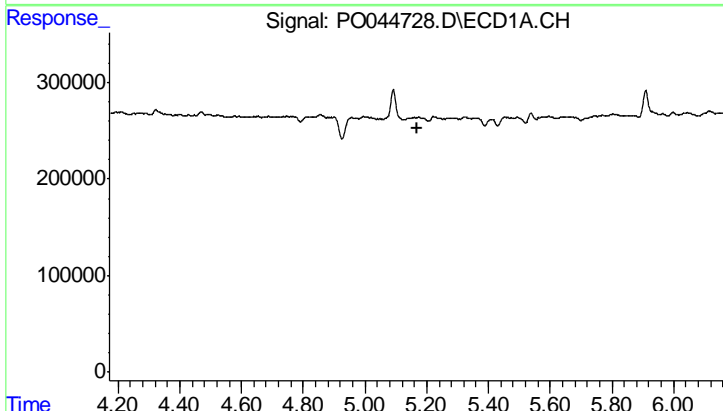


#12 AR-1232-2  
 R.T.: 5.092 min  
 Delta R.T.: -0.060 min  
 Response: 582334  
 Conc: 247.56 ng/ml

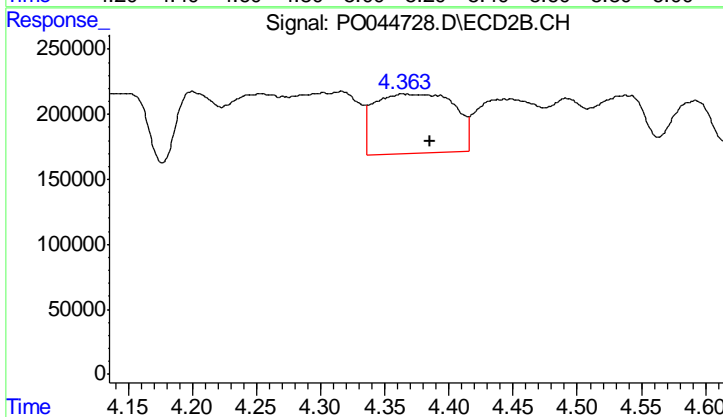
Instrument :  
 ECD\_O  
 ClientSampled :  
 251-COMP1-SL



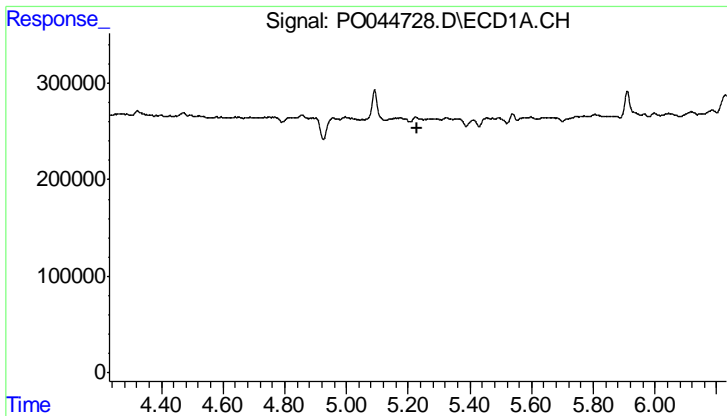
#12 AR-1232-2  
 R.T.: 4.316 min  
 Delta R.T.: -0.014 min  
 Response: 1676985  
 Conc: 157.52 ng/ml



#13 AR-1232-3  
 R.T.: 0.000 min  
 Exp R.T. : 5.172 min  
 Response: 0  
 Conc: N.D.

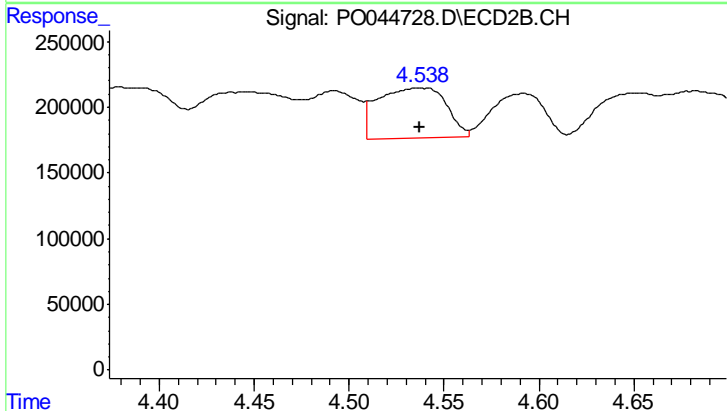


#13 AR-1232-3  
 R.T.: 4.365 min  
 Delta R.T.: -0.020 min  
 Response: 1975905  
 Conc: 453.52 ng/ml

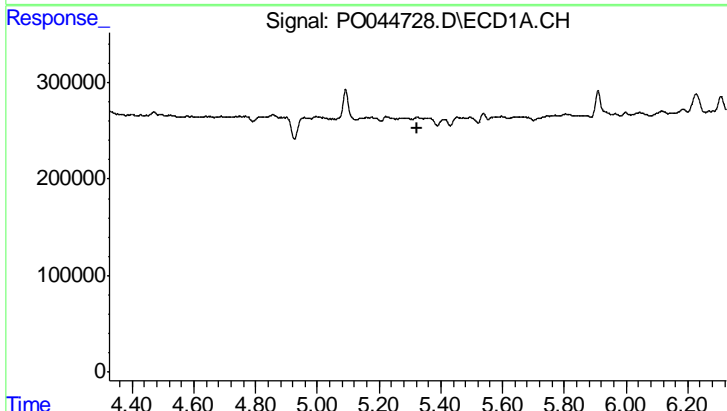


#14 AR-1232-4  
 R.T.: 0.000 min  
 Exp R.T.: 5.232 min  
 Response: 0  
 Conc: N.D.

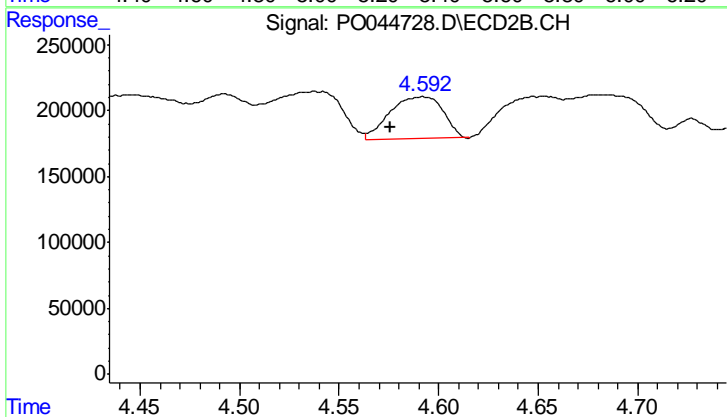
Instrument :  
 ECD\_O  
 ClientSampleId :  
 251-COMP1-SL



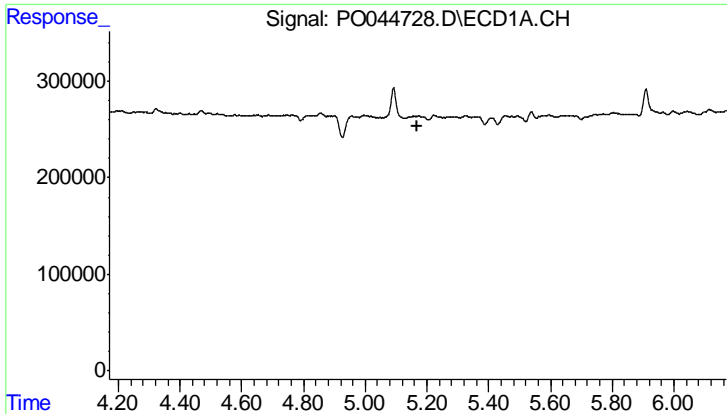
#14 AR-1232-4  
 R.T.: 4.538 min  
 Delta R.T.: 0.000 min  
 Response: 957646  
 Conc: 167.93 ng/ml



#15 AR-1232-5  
 R.T.: 0.000 min  
 Exp R.T.: 5.326 min  
 Response: 0  
 Conc: N.D.



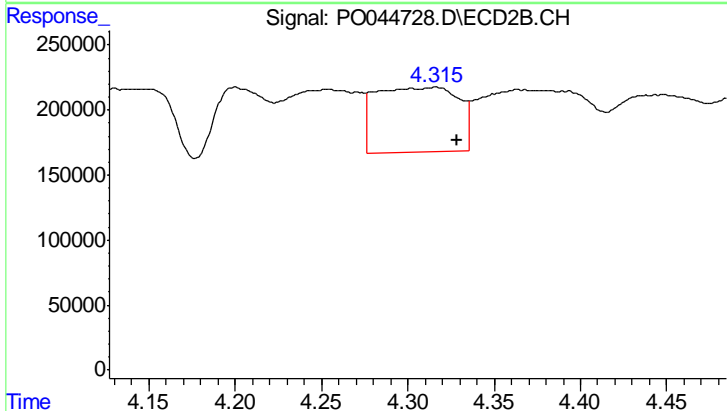
#15 AR-1232-5  
 R.T.: 4.592 min  
 Delta R.T.: 0.016 min  
 Response: 595387  
 Conc: 209.68 ng/ml



#17 AR-1242-2

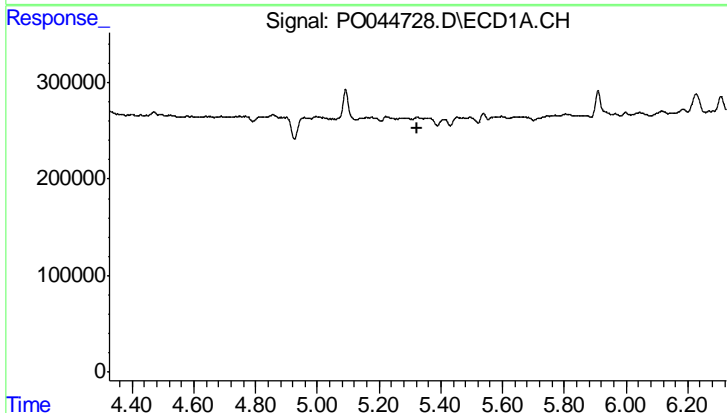
R.T.: 0.000 min  
 Exp R.T.: 5.171 min  
 Response: 0  
 Conc: N.D.

Instrument :  
 ECD\_O  
 ClientSampleId :  
 251-COMP1-SL



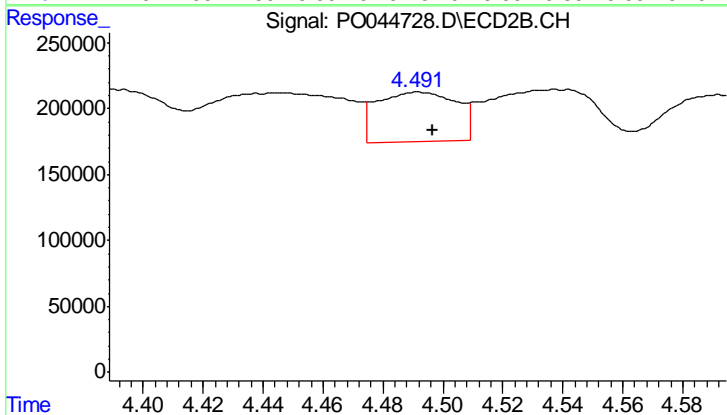
#17 AR-1242-2

R.T.: 4.316 min  
 Delta R.T.: -0.013 min  
 Response: 1676985  
 Conc: 91.43 ng/ml



#18 AR-1242-3

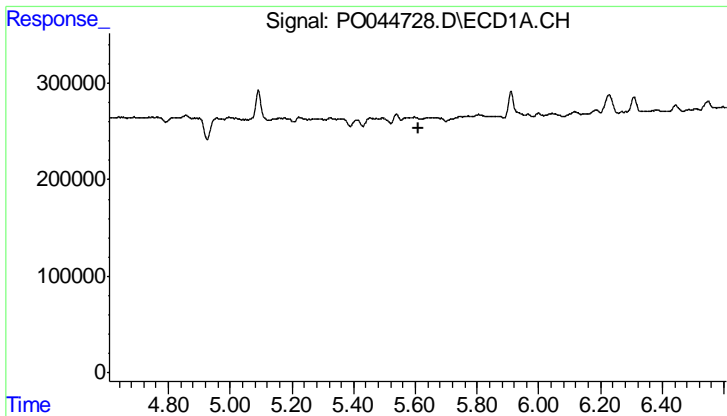
R.T.: 0.000 min  
 Exp R.T.: 5.326 min  
 Response: 0  
 Conc: N.D.



#18 AR-1242-3

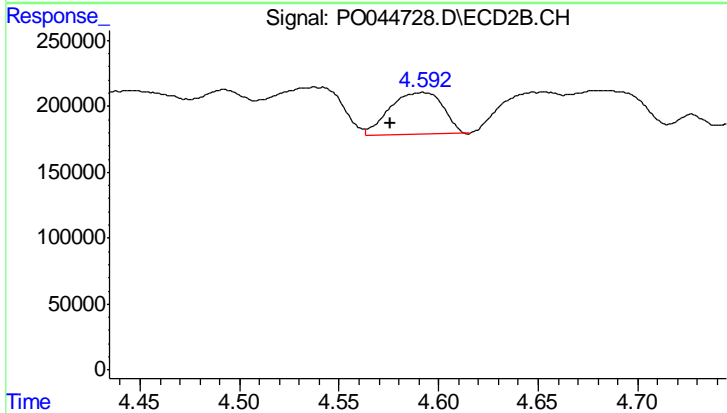
R.T.: 4.492 min  
 Delta R.T.: -0.005 min  
 Response: 695819  
 Conc: 111.73 ng/ml



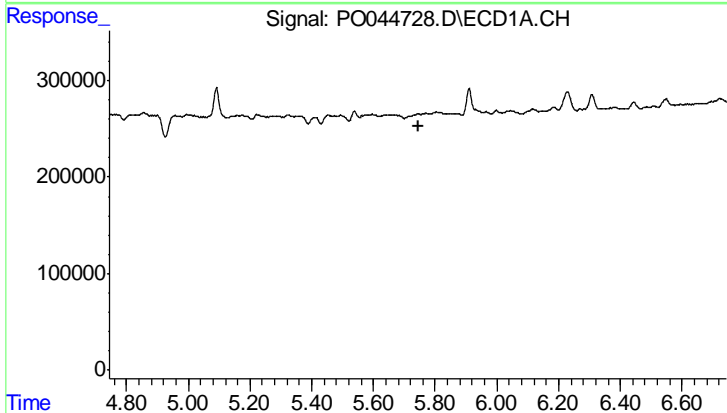


#19 AR-1242-4  
 R.T.: 0.000 min  
 Exp R.T.: 5.609 min  
 Response: 0  
 Conc: N.D.

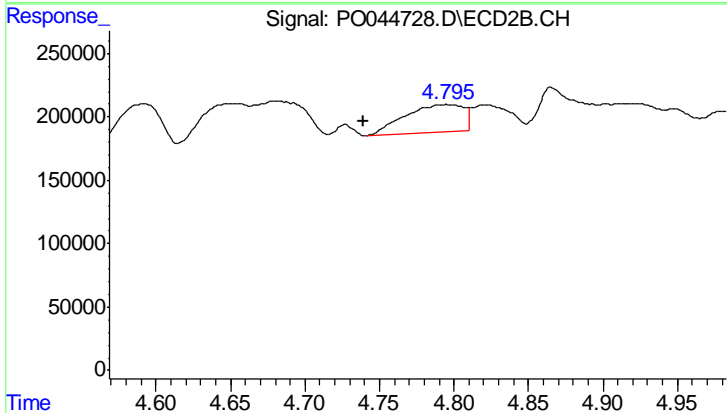
Instrument :  
 ECD\_O  
 ClientSampleId :  
 251-COMP1-SL



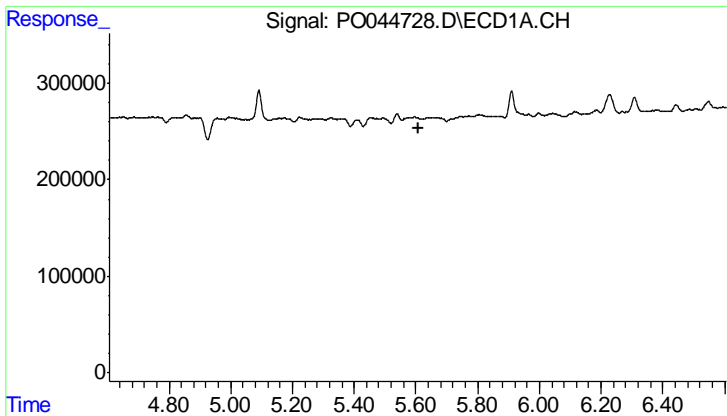
#19 AR-1242-4  
 R.T.: 4.592 min  
 Delta R.T.: 0.016 min  
 Response: 595387  
 Conc: 100.74 ng/ml



#20 AR-1242-5  
 R.T.: 0.000 min  
 Exp R.T.: 5.744 min  
 Response: 0  
 Conc: N.D.



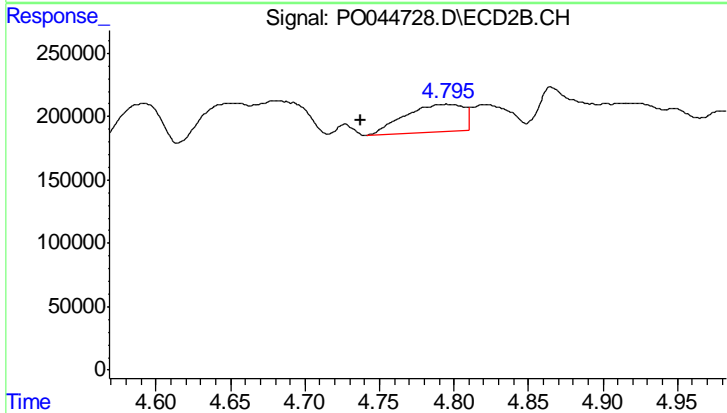
#20 AR-1242-5  
 R.T.: 4.795 min  
 Delta R.T.: 0.056 min  
 Response: 587037  
 Conc: 85.72 ng/ml



#21 AR-1248-1

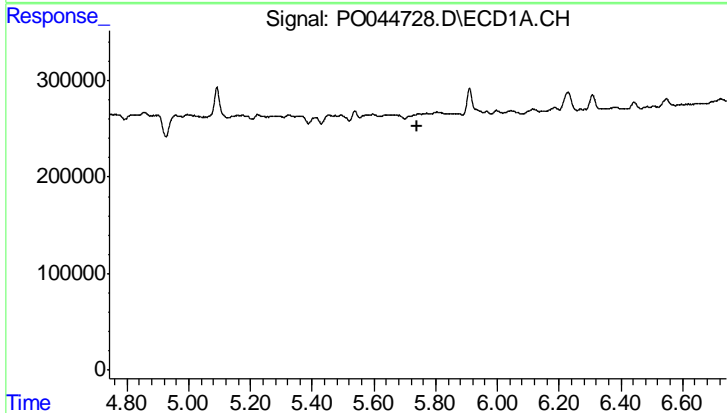
R.T.: 0.000 min  
 Exp R.T.: 5.607 min  
 Response: 0  
 Conc: N.D.

Instrument :  
 ECD\_O  
 ClientSampleId :  
 251-COMP1-SL



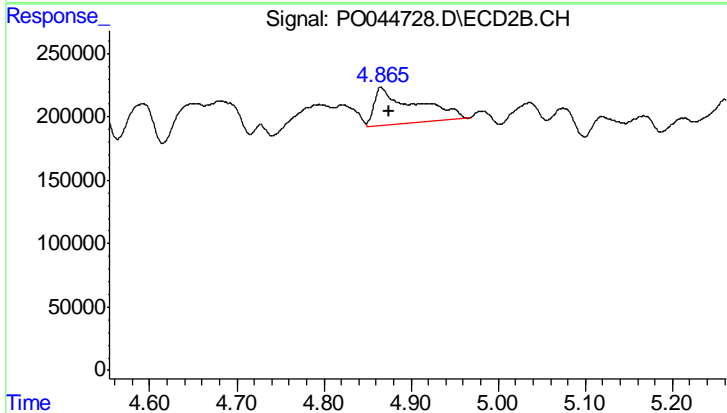
#21 AR-1248-1

R.T.: 4.795 min  
 Delta R.T.: 0.058 min  
 Response: 587037  
 Conc: 63.10 ng/ml



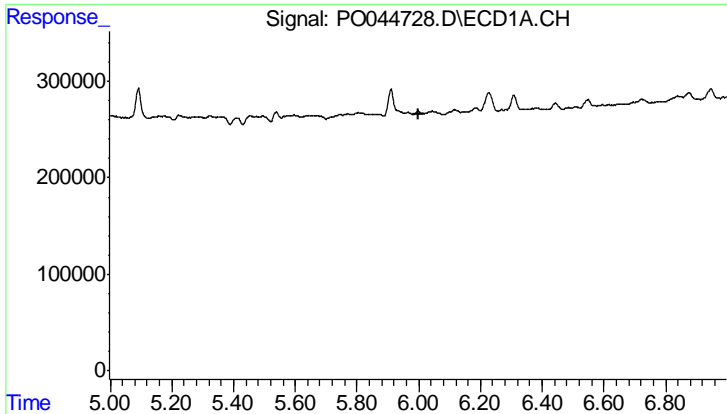
#22 AR-1248-2

R.T.: 0.000 min  
 Exp R.T.: 5.742 min  
 Response: 0  
 Conc: N.D.



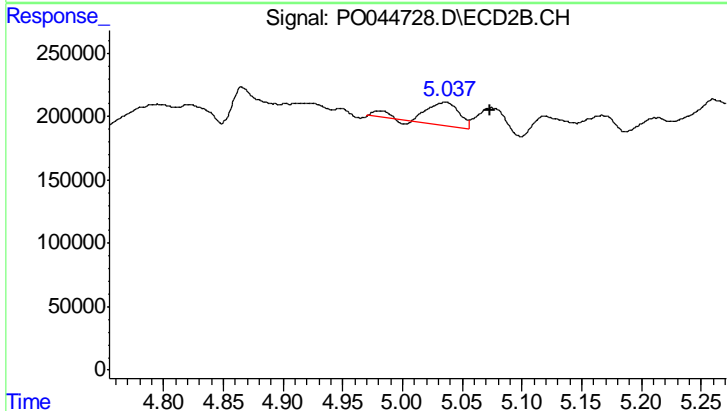
#22 AR-1248-2

R.T.: 4.866 min  
 Delta R.T.: -0.009 min  
 Response: 968996  
 Conc: 115.48 ng/ml

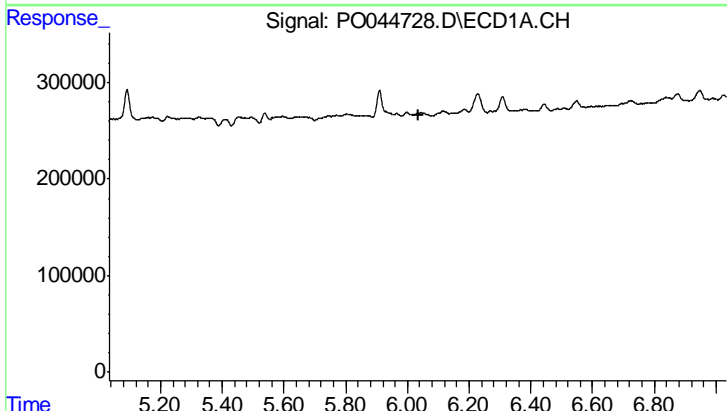


#23 AR-1248-3  
 R.T.: 0.000 min  
 Exp R.T.: 5.998 min  
 Response: 0  
 Conc: N.D.

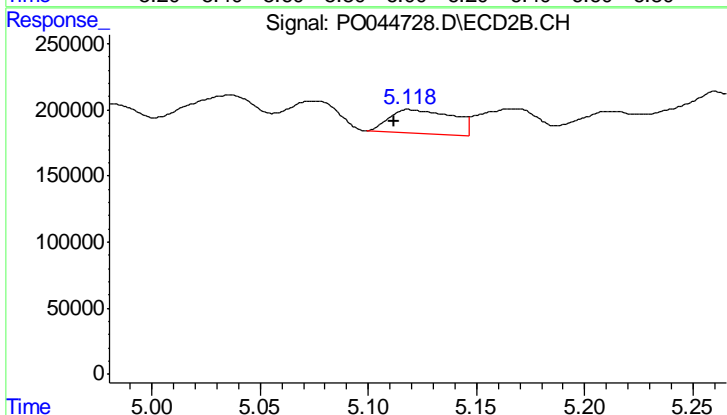
Instrument :  
 ECD\_O  
 ClientSampleId :  
 251-COMP1-SL



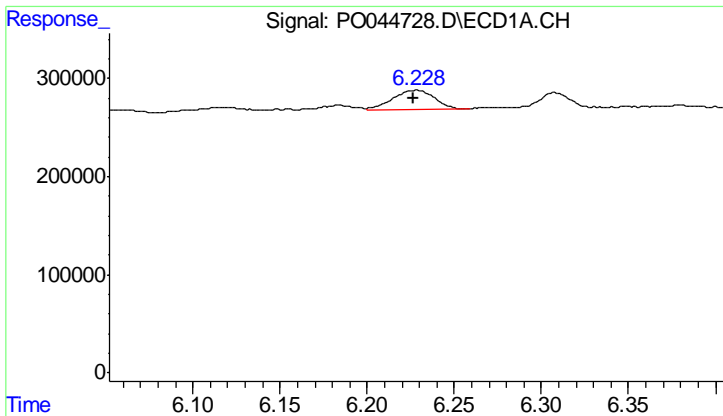
#23 AR-1248-3  
 R.T.: 5.036 min  
 Delta R.T.: -0.038 min  
 Response: 351674  
 Conc: 24.59 ng/ml



#24 AR-1248-4  
 R.T.: 0.000 min  
 Exp R.T.: 6.034 min  
 Response: 0  
 Conc: N.D.



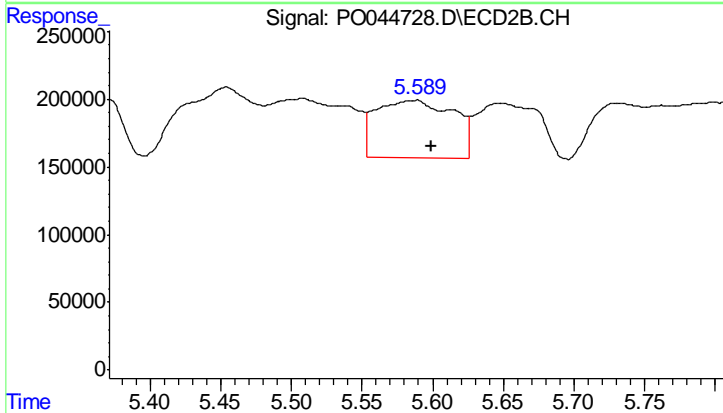
#24 AR-1248-4  
 R.T.: 5.120 min  
 Delta R.T.: 0.008 min  
 Response: 370867  
 Conc: 28.28 ng/ml



#25 AR-1248-5

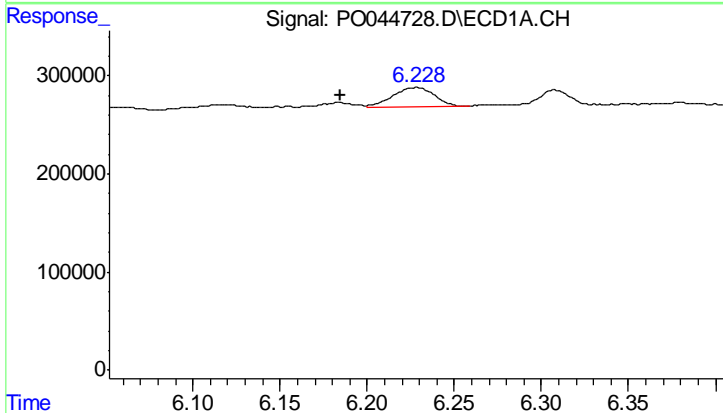
R.T.: 6.228 min  
 Delta R.T.: 0.002 min  
 Response: 332481  
 Conc: 75.70 ng/ml

Instrument :  
 ECD\_O  
 ClientSampleId :  
 251-COMP1-SL



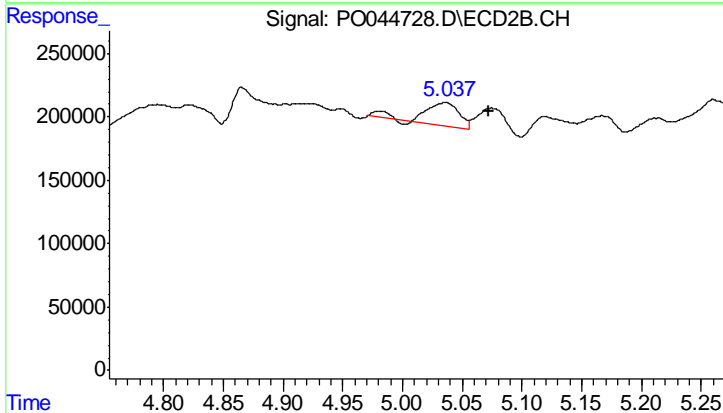
#25 AR-1248-5

R.T.: 5.586 min  
 Delta R.T.: -0.013 min  
 Response: 1627665  
 Conc: 228.62 ng/ml



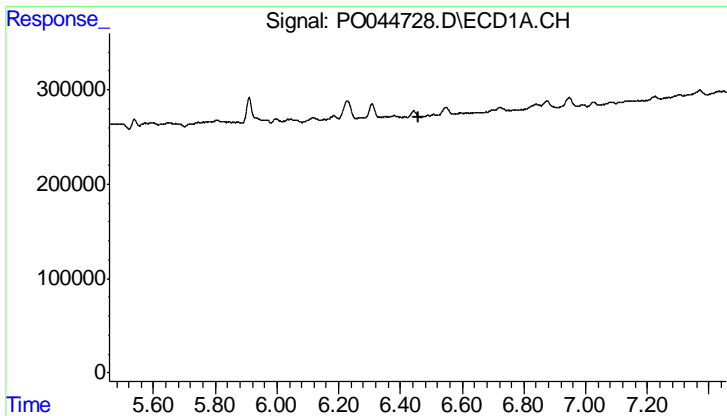
#26 AR-1254-1

R.T.: 6.228 min  
 Delta R.T.: 0.044 min  
 Response: 332481  
 Conc: 30.80 ng/ml



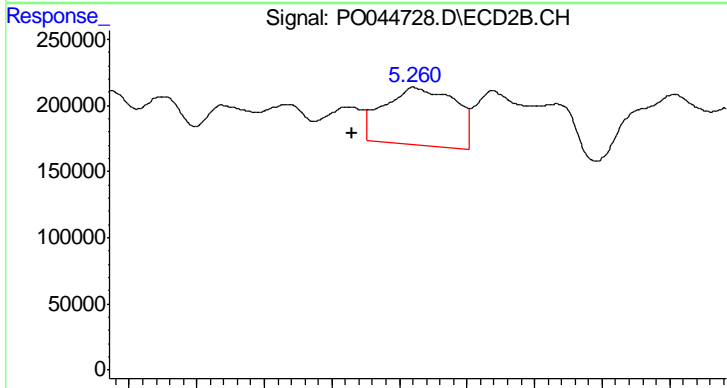
#26 AR-1254-1

R.T.: 5.036 min  
 Delta R.T.: -0.037 min  
 Response: 351674  
 Conc: 21.74 ng/ml

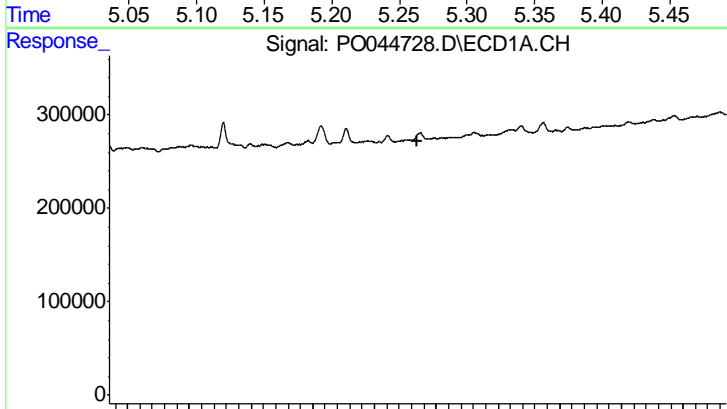


#27 AR-1254-2  
 R.T.: 0.000 min  
 Exp R.T.: 6.457 min  
 Response: 0  
 Conc: N.D.

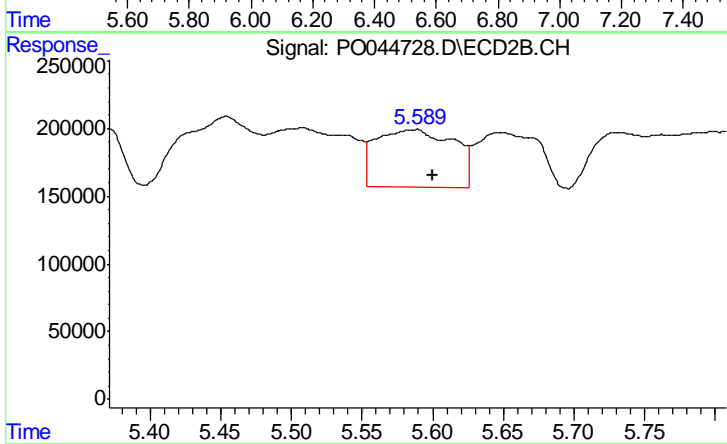
Instrument :  
 ECD\_O  
 ClientSampleId :  
 251-COMP1-SL



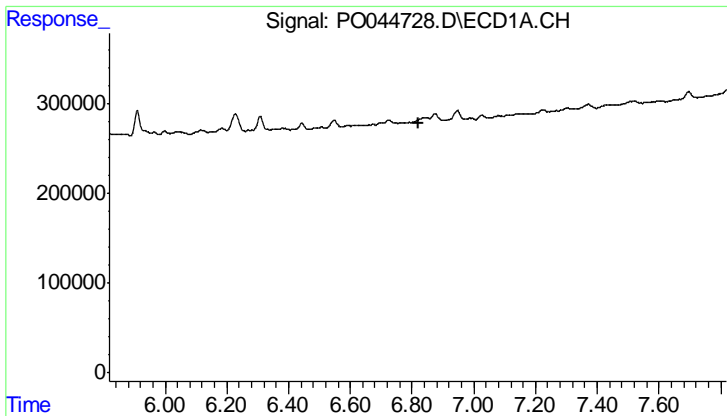
#27 AR-1254-2  
 R.T.: 5.261 min  
 Delta R.T.: 0.046 min  
 Response: 1627094  
 Conc: 115.48 ng/ml



#28 AR-1254-3  
 R.T.: 0.000 min  
 Exp R.T.: 6.541 min  
 Response: 0  
 Conc: N.D.

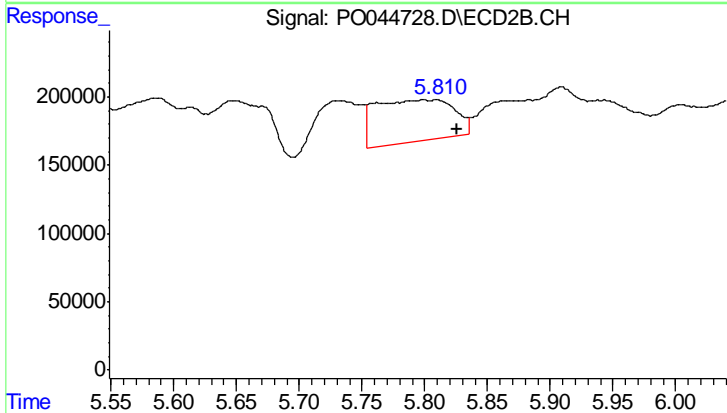


#28 AR-1254-3  
 R.T.: 5.586 min  
 Delta R.T.: -0.014 min  
 Response: 1627665  
 Conc: 69.60 ng/ml

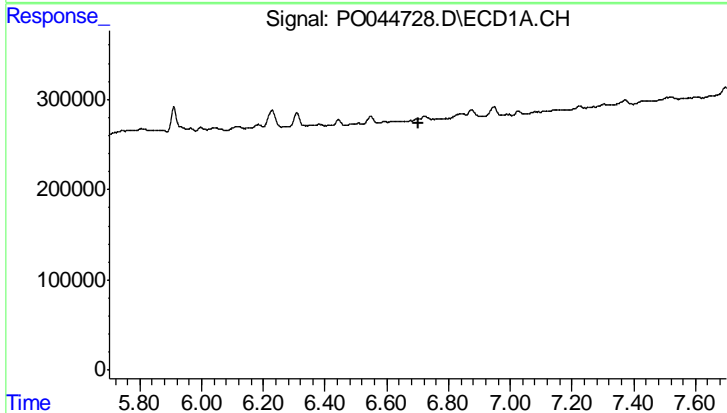


#29 AR-1254-4  
 R.T.: 0.000 min  
 Exp R.T.: 6.819 min  
 Response: 0  
 Conc: N.D.

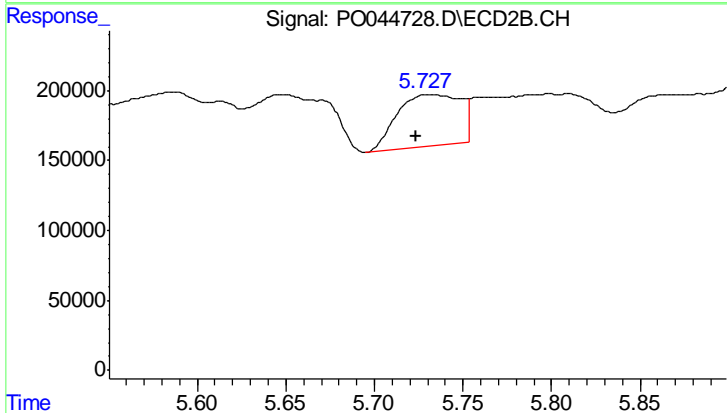
Instrument :  
 ECD\_O  
 ClientSampleId :  
 251-COMP1-SL



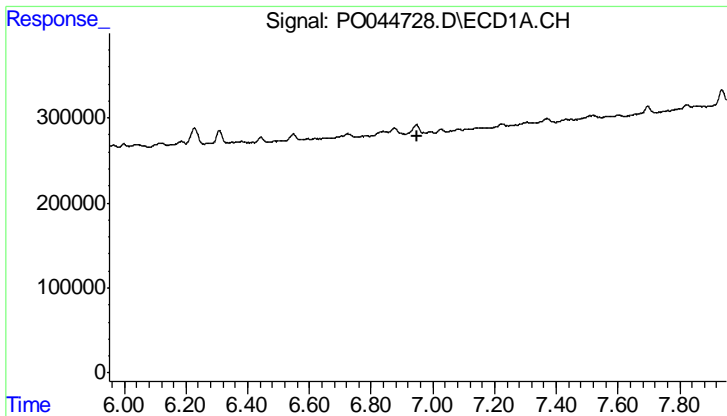
#29 AR-1254-4  
 R.T.: 5.808 min  
 Delta R.T.: -0.017 min  
 Response: 1332609  
 Conc: 71.36 ng/ml



#31 AR-1260-1  
 R.T.: 0.000 min  
 Exp R.T.: 6.701 min  
 Response: 0  
 Conc: N.D.

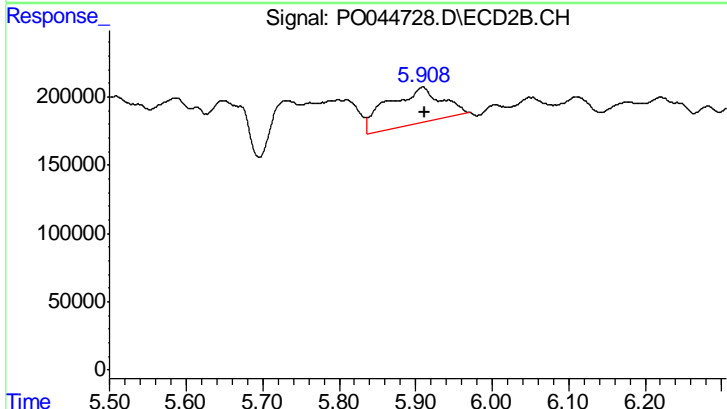


#31 AR-1260-1  
 R.T.: 5.731 min  
 Delta R.T.: 0.007 min  
 Response: 922451  
 Conc: 58.14 ng/ml

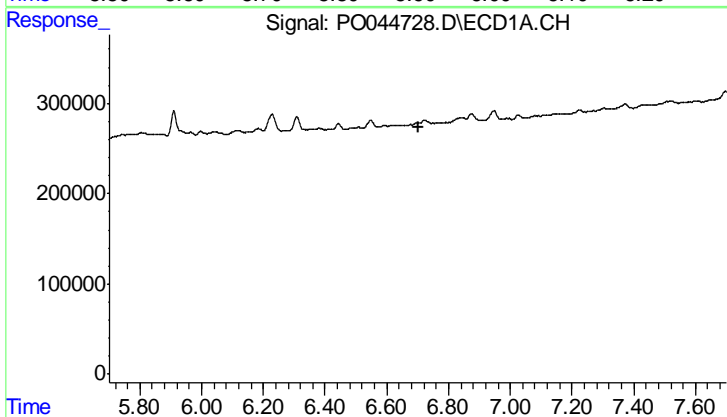


#32 AR-1260-2  
 R.T.: 0.000 min  
 Exp R.T.: 6.951 min  
 Response: 0  
 Conc: N.D.

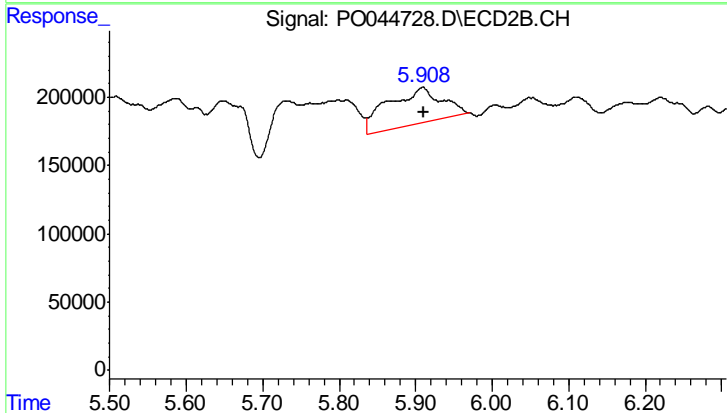
Instrument :  
 ECD\_O  
 ClientSampleId :  
 251-COMP1-SL



#32 AR-1260-2  
 R.T.: 5.909 min  
 Delta R.T.: -0.003 min  
 Response: 1293194  
 Conc: 59.58 ng/ml



#36 AR-1262-1  
 R.T.: 0.000 min  
 Exp R.T.: 6.701 min  
 Response: 0  
 Conc: N.D.



#36 AR-1262-1  
 R.T.: 5.909 min  
 Delta R.T.: -0.001 min  
 Response: 1293194  
 Conc: 72.07 ng/ml