

Data Path : Z:\pestpcbsrv\HPCHEM1\ECD_0\Data\P0051820\
 Data File : P0068459.D
 Signal(s) : Signal #1: ECD1A.CH Signal #2: ECD2B.CH
 Acq On : 18 May 2020 19:55
 Operator : DD\AJ
 Sample : AR1660CCC500
 Misc :
 ALS Vial : 3 Sample Multiplier: 1

Instrument :
 ECD_0
 ClientSampleId :
 AR1660CCC500

Integration File signal 1: autoint1.e
 Integration File signal 2: autoint2.e
 Quant Time: May 18 22:59:59 2020
 Quant Method : Z:\pestpcbsrv\HPCHEM1\ECD_0\methods\P0050820.M
 Quant Title : GC EXTRACTABLES
 QLast Update : Fri May 08 13:29:29 2020
 Response via : Initial Calibration
 Integrator: ChemStation 6890 Scale Mode: Small noise peaks clipped

Volume Inj. : 2 µl
 Signal #1 Phase : ZB-MR1 Signal #2 Phase: ZB-MR2
 Signal #1 Info : 30Mx0.32mmx 0.50µ Signal #2 Info : 30M x 0.32mm x 0.25µm

| | Compound | RT#1 | RT#2 | Resp#1 | Resp#2 | ng/ml | ng/ml |
|-----------------------------|-----------------|--------|-------|---------|---------|---------|---------|
| ----- | | | | | | | |
| System Monitoring Compounds | | | | | | | |
| 1) | SA Tetrachlo... | 4.898 | 3.930 | 1467033 | 1656929 | 52.307 | 48.287 |
| 2) | SA Decachlor... | 10.849 | 9.203 | 1843809 | 1834246 | 46.335 | 47.644 |
| Target Compounds | | | | | | | |
| 3) | L1 AR-1016-1 | 6.219 | 5.182 | 575302 | 668079 | 525.739 | 478.439 |
| 4) | L1 AR-1016-2 | 6.242 | 5.202 | 802617 | 893195 | 534.632 | 480.778 |
| 5) | L1 AR-1016-3 | 6.308 | 5.392 | 493790 | 491613 | 529.834 | 487.790 |
| 6) | L1 AR-1016-4 | 6.415 | 5.445 | 410241 | 399816 | 534.183 | 480.177 |
| 7) | L1 AR-1016-5 | 6.728 | 5.672 | 393250 | 495254 | 517.236 | 461.187 |
| 31) | L7 AR-1260-1 | 7.898 | 6.765 | 714188 | 872296 | 512.612 | 454.494 |
| 32) | L7 AR-1260-2 | 8.163 | 6.964 | 920982 | 1076824 | 519.082 | 458.981 |
| 33) | L7 AR-1260-3 | 8.526 | 7.117 | 771644 | 995789 | 531.161 | 456.947 |
| 34) | L7 AR-1260-4 | 8.755 | 7.598 | 764245 | 873449 | 490.790 | 459.154 |
| 35) | L7 AR-1260-5 | 9.076 | 7.846 | 1716390 | 2109082 | 516.710 | 474.569 |

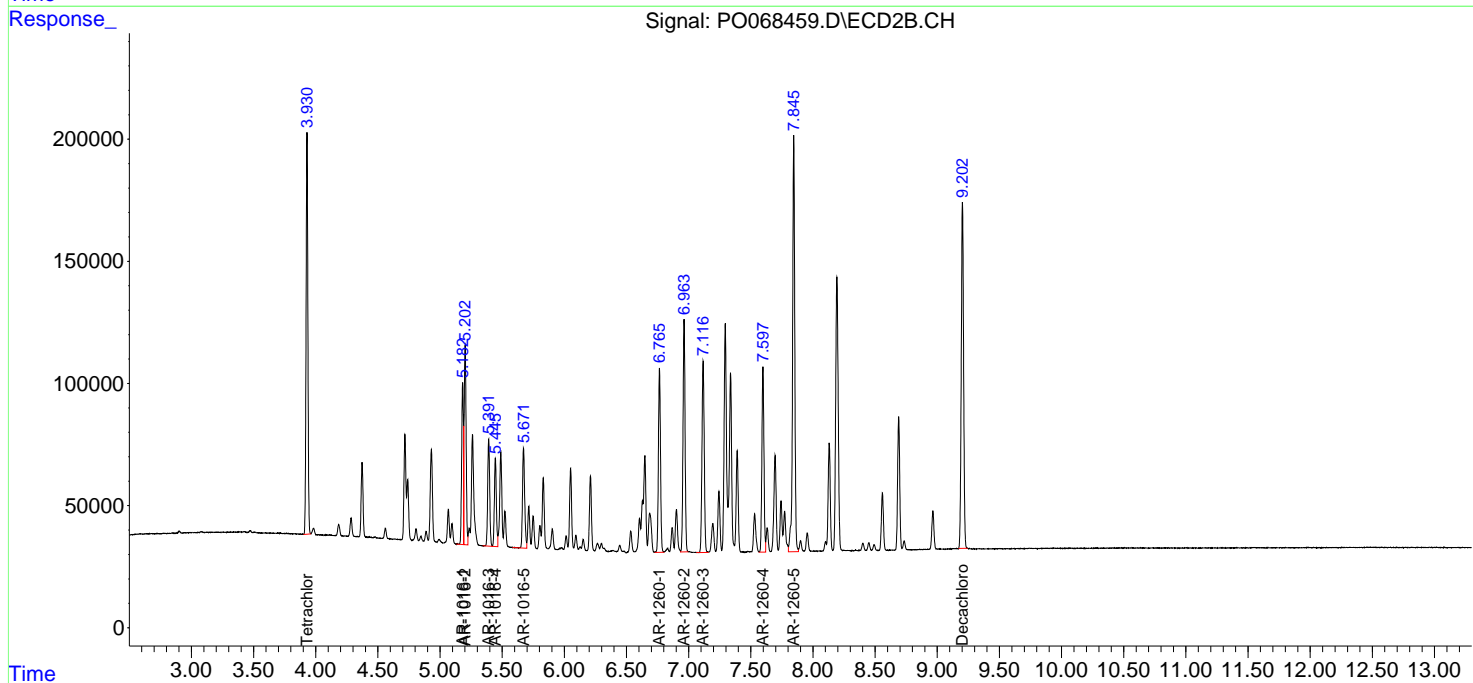
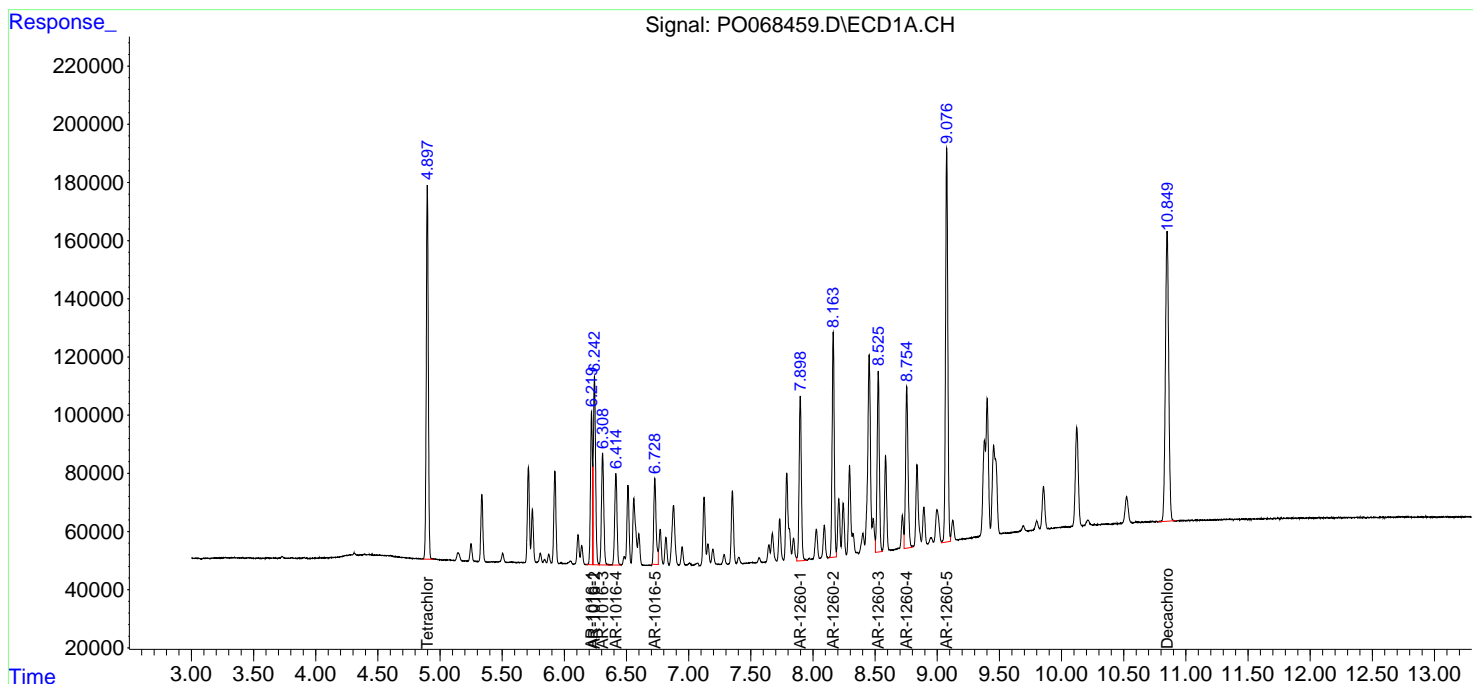
(f)=RT Delta > 1/2 Window (#)=Amounts differ by > 25% (m)=manual int.

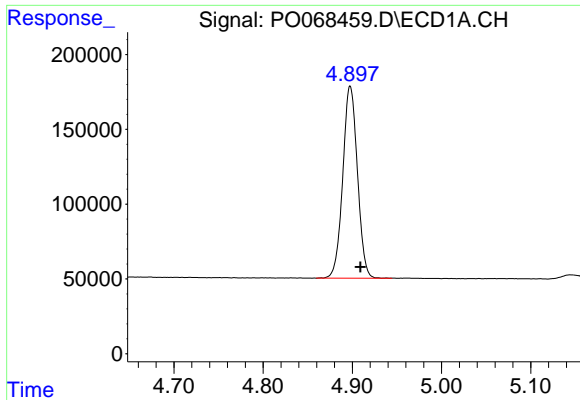
Data Path : Z:\pestpcbsrv\HPCHEM1\ECD_0\Data\P0051820\
 Data File : P0068459.D
 Signal(s) : Signal #1: ECD1A.CH Signal #2: ECD2B.CH
 Acq On : 18 May 2020 19:55
 Operator : DD\AJ
 Sample : AR1660CCC500
 Misc :
 ALS Vial : 3 Sample Multiplier: 1

Instrument :
 ECD_O
 Client Sampled :
 AR1660CCC500

Integration File signal 1: autoint1.e
 Integration File signal 2: autoint2.e
 Quant Time: May 18 22:59:59 2020
 Quant Method : Z:\pestpcbsrv\HPCHEM1\ECD_0\methods\P0050820.M
 Quant Title : GC EXTRACTABLES
 QLast Update : Fri May 08 13:29:29 2020
 Response via : Initial Calibration
 Integrator: ChemStation 6890 Scale Mode: Small noise peaks clipped

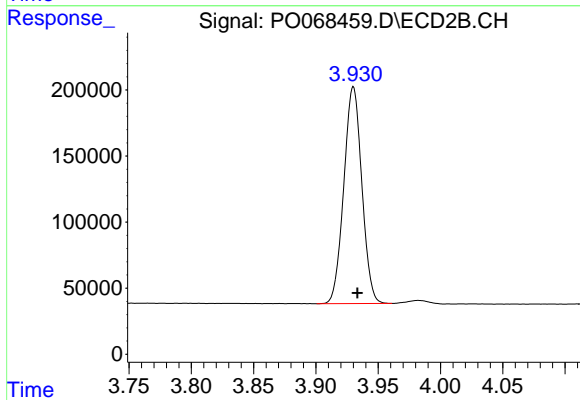
Volume Inj. : 2 µl
 Signal #1 Phase : ZB-MR1 Signal #2 Phase: ZB-MR2
 Signal #1 Info : 30Mx0.32mmx 0.50µ Signal #2 Info : 30M x 0.32mm x 0.25µm



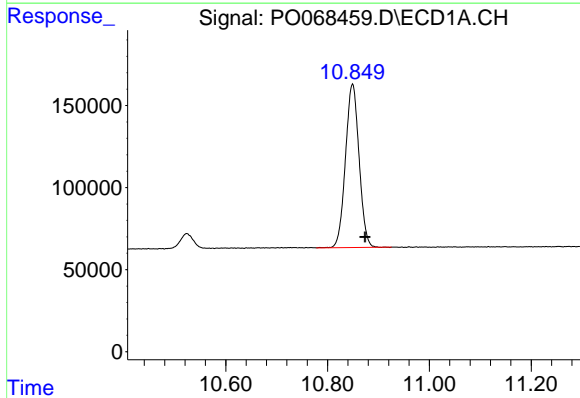


#1 Tetrachloro-m-xylene
 R.T.: 4.898 min
 Delta R.T.: -0.011 min
 Response: 1467033
 Conc: 52.31 ng/ml

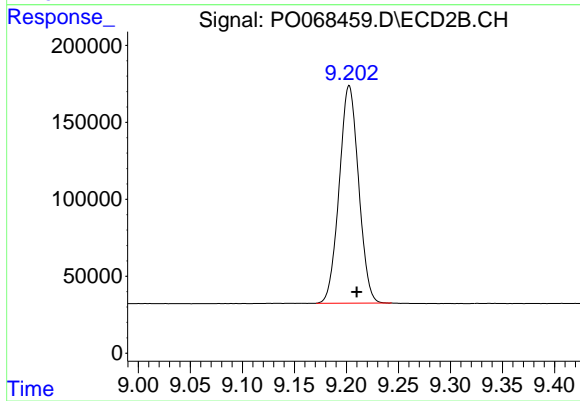
Instrument :
 ECD_O
 ClientSampleId :
 AR1660CCC500



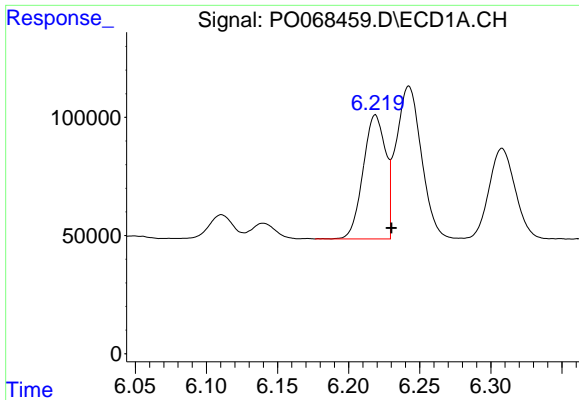
#1 Tetrachloro-m-xylene
 R.T.: 3.930 min
 Delta R.T.: -0.003 min
 Response: 1656929
 Conc: 48.29 ng/ml



#2 Decachlorobiphenyl
 R.T.: 10.849 min
 Delta R.T.: -0.025 min
 Response: 1843809
 Conc: 46.33 ng/ml



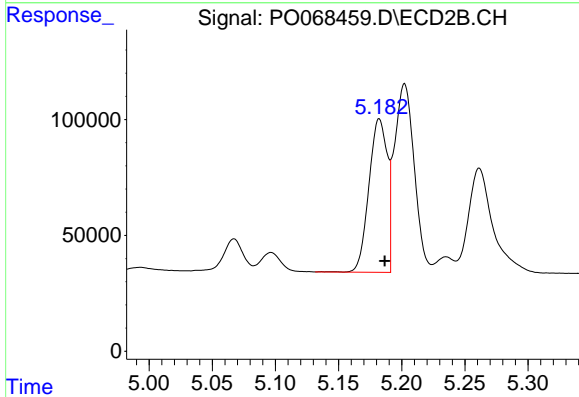
#2 Decachlorobiphenyl
 R.T.: 9.203 min
 Delta R.T.: -0.007 min
 Response: 1834246
 Conc: 47.64 ng/ml



#3 AR-1016-1

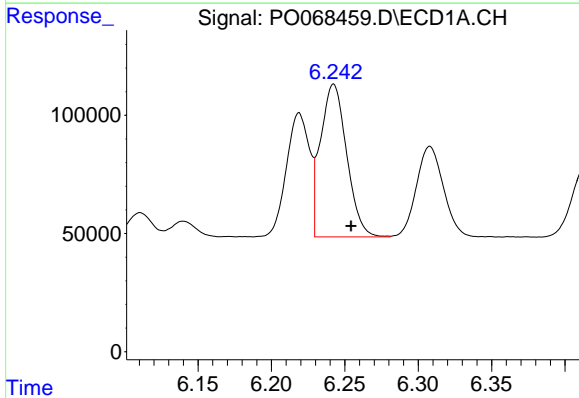
R.T.: 6.219 min
 Delta R.T.: -0.011 min
 Response: 575302
 Conc: 525.74 ng/ml

Instrument :
 ECD_O
 ClientSampled :
 AR1660CCC500



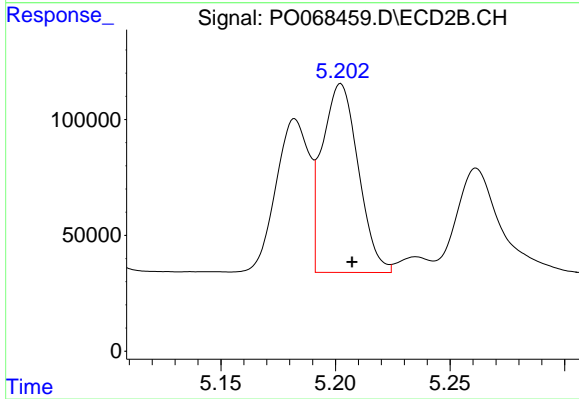
#3 AR-1016-1

R.T.: 5.182 min
 Delta R.T.: -0.004 min
 Response: 668079
 Conc: 478.44 ng/ml



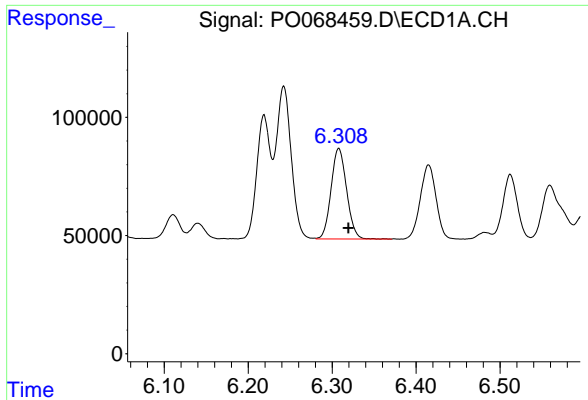
#4 AR-1016-2

R.T.: 6.242 min
 Delta R.T.: -0.012 min
 Response: 802617
 Conc: 534.63 ng/ml



#4 AR-1016-2

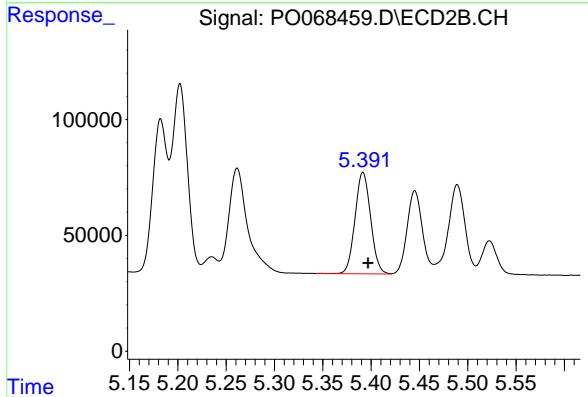
R.T.: 5.202 min
 Delta R.T.: -0.005 min
 Response: 893195
 Conc: 480.78 ng/ml



#5 AR-1016-3

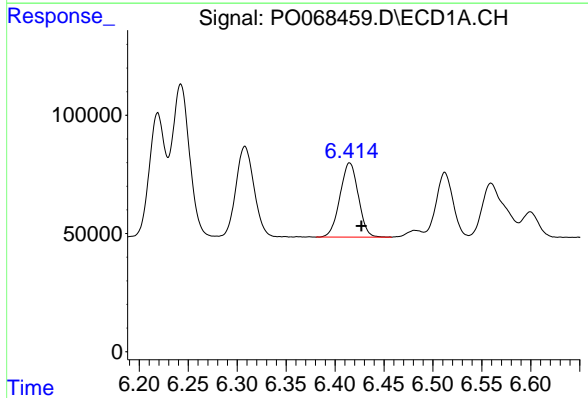
R.T.: 6.308 min
 Delta R.T.: -0.011 min
 Response: 493790
 Conc: 529.83 ng/ml

Instrument :
 ECD_O
 ClientSampleId :
 AR1660CCC500



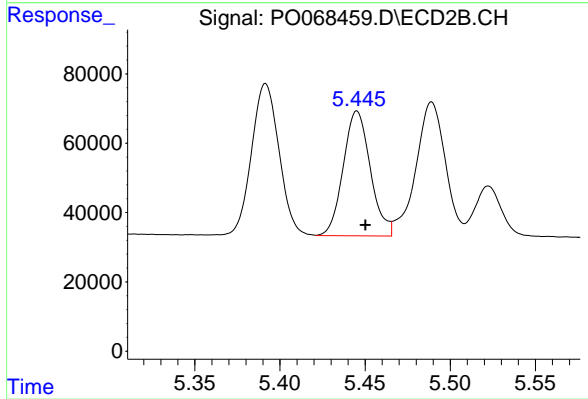
#5 AR-1016-3

R.T.: 5.392 min
 Delta R.T.: -0.005 min
 Response: 491613
 Conc: 487.79 ng/ml



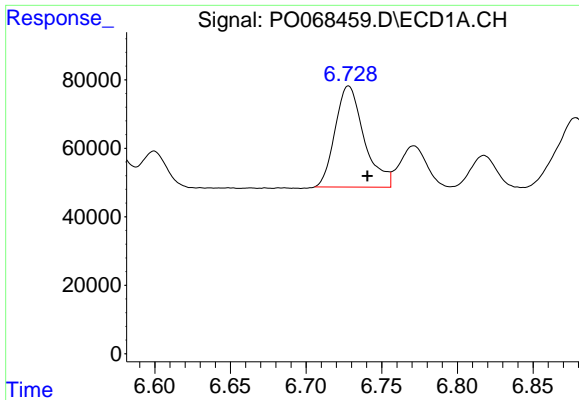
#6 AR-1016-4

R.T.: 6.415 min
 Delta R.T.: -0.012 min
 Response: 410241
 Conc: 534.18 ng/ml



#6 AR-1016-4

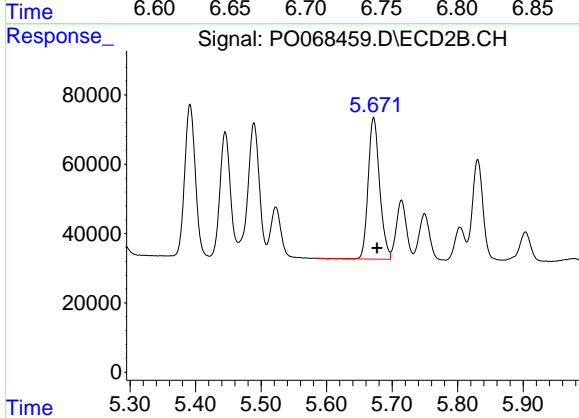
R.T.: 5.445 min
 Delta R.T.: -0.005 min
 Response: 399816
 Conc: 480.18 ng/ml



#7 AR-1016-5

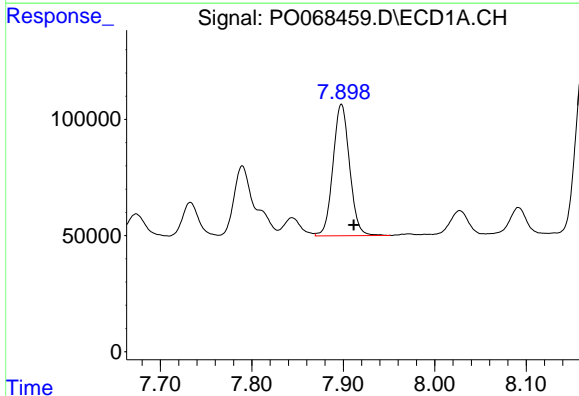
R.T.: 6.728 min
 Delta R.T.: -0.012 min
 Response: 393250
 Conc: 517.24 ng/ml

Instrument :
 ECD_O
 ClientSampleId :
 AR1660CCC500



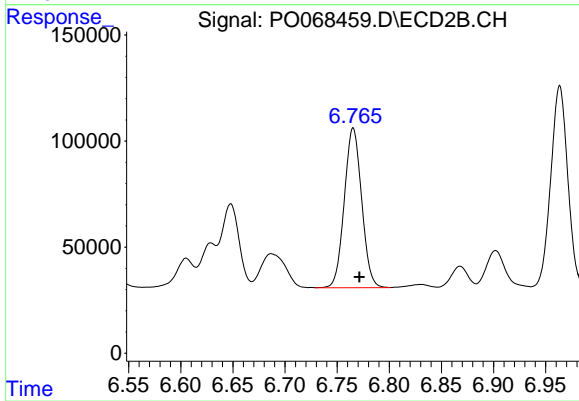
#7 AR-1016-5

R.T.: 5.672 min
 Delta R.T.: -0.005 min
 Response: 495254
 Conc: 461.19 ng/ml



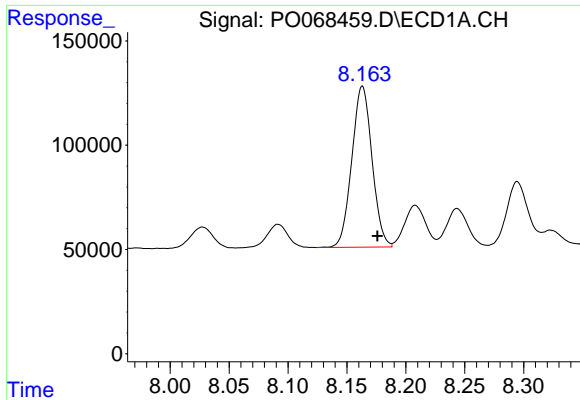
#31 AR-1260-1

R.T.: 7.898 min
 Delta R.T.: -0.013 min
 Response: 714188
 Conc: 512.61 ng/ml



#31 AR-1260-1

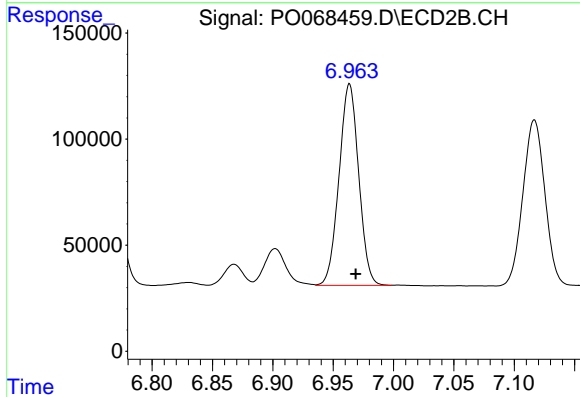
R.T.: 6.765 min
 Delta R.T.: -0.006 min
 Response: 872296
 Conc: 454.49 ng/ml



#32 AR-1260-2

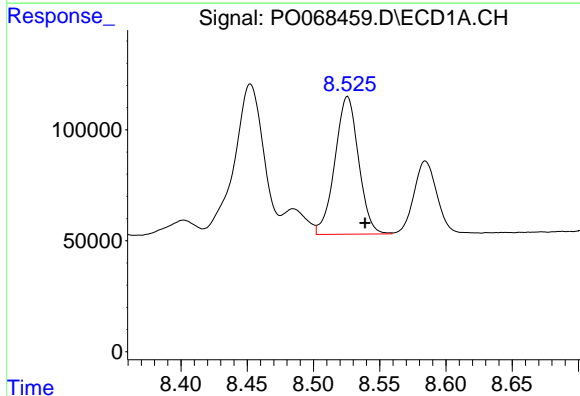
R.T.: 8.163 min
 Delta R.T.: -0.013 min
 Response: 920982
 Conc: 519.08 ng/ml

Instrument :
 ECD_O
 ClientSampleId :
 AR1660CCC500



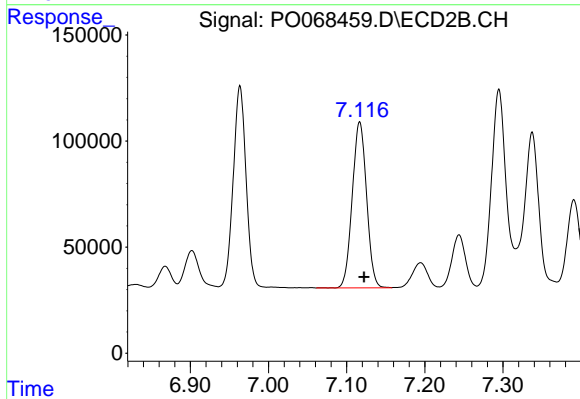
#32 AR-1260-2

R.T.: 6.964 min
 Delta R.T.: -0.005 min
 Response: 1076824
 Conc: 458.98 ng/ml



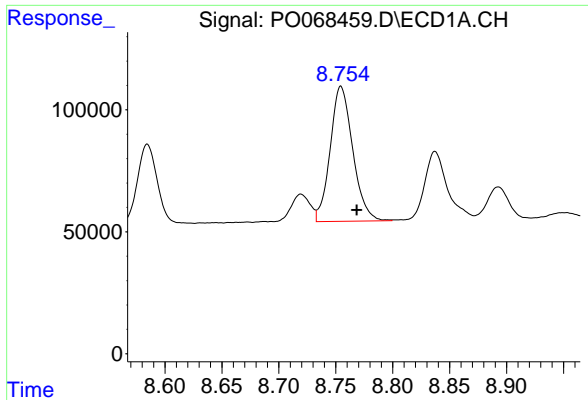
#33 AR-1260-3

R.T.: 8.526 min
 Delta R.T.: -0.013 min
 Response: 771644
 Conc: 531.16 ng/ml



#33 AR-1260-3

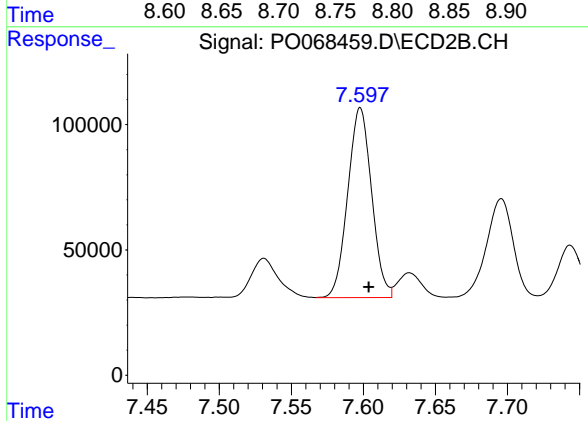
R.T.: 7.117 min
 Delta R.T.: -0.006 min
 Response: 995789
 Conc: 456.95 ng/ml



#34 AR-1260-4

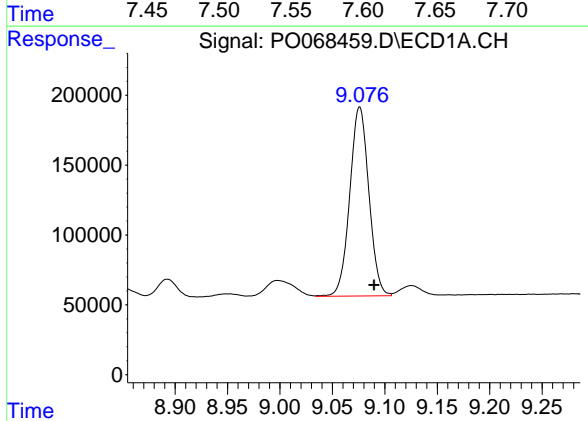
R.T.: 8.755 min
 Delta R.T.: -0.014 min
 Response: 764245
 Conc: 490.79 ng/ml

Instrument :
 ECD_O
 ClientSampleId :
 AR1660CCC500



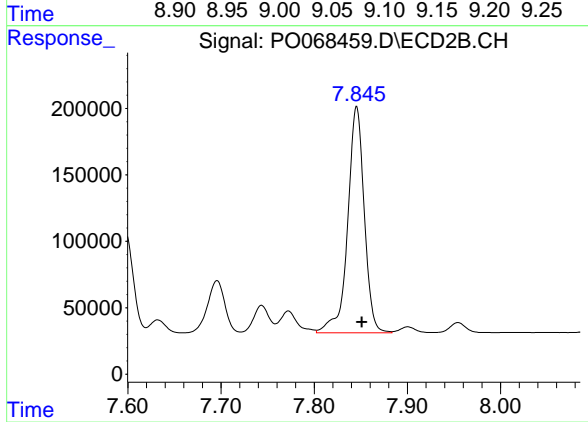
#34 AR-1260-4

R.T.: 7.598 min
 Delta R.T.: -0.006 min
 Response: 873449
 Conc: 459.15 ng/ml



#35 AR-1260-5

R.T.: 9.076 min
 Delta R.T.: -0.014 min
 Response: 1716390
 Conc: 516.71 ng/ml



#35 AR-1260-5

R.T.: 7.846 min
 Delta R.T.: -0.006 min
 Response: 2109082
 Conc: 474.57 ng/ml