

Data Path : Z:\pestpcbsrv\HPCHEM1\ECD_0\Data\P0052019\
 Data File : P0056368.D
 Signal(s) : Signal #1: ECD1A.CH Signal #2: ECD2B.CH
 Acq On : 20 May 2019 12:59
 Operator : SM/SJ
 Sample : I.BLK
 Misc :
 ALS Vial : 2 Sample Multiplier: 1

Instrument :
 ECD_0
 ClientSampleId :
 I.BLK

Integration File signal 1: autoint1.e
 Integration File signal 2: autoint2.e
 Quant Time: May 21 03:51:38 2019
 Quant Method : Z:\pestpcbsrv\HPCHEM1\ECD_0\methods\P0052019.M
 Quant Title : GC EXTRACTABLES
 QLast Update : Tue May 21 03:48:44 2019
 Response via : Initial Calibration
 Integrator: ChemStation 6890 Scale Mode: Small noise peaks clipped

Volume Inj. : 2 µl
 Signal #1 Phase : ZB-MR1 Signal #2 Phase: ZB-MR2
 Signal #1 Info : 30Mx0.32mmx 0.50µ Signal #2 Info : 30M x 0.32mm x 0.25µm

Compound	RT#1	RT#2	Resp#1	Resp#2	ng/ml	ng/ml

System Monitoring Compounds						
1) SA Tetrachlo...	4.251	3.574	506166	489247	17.575	18.141
2) SA Decachlor...	9.830	8.512	925040	760144	18.128	17.303

Target Compounds

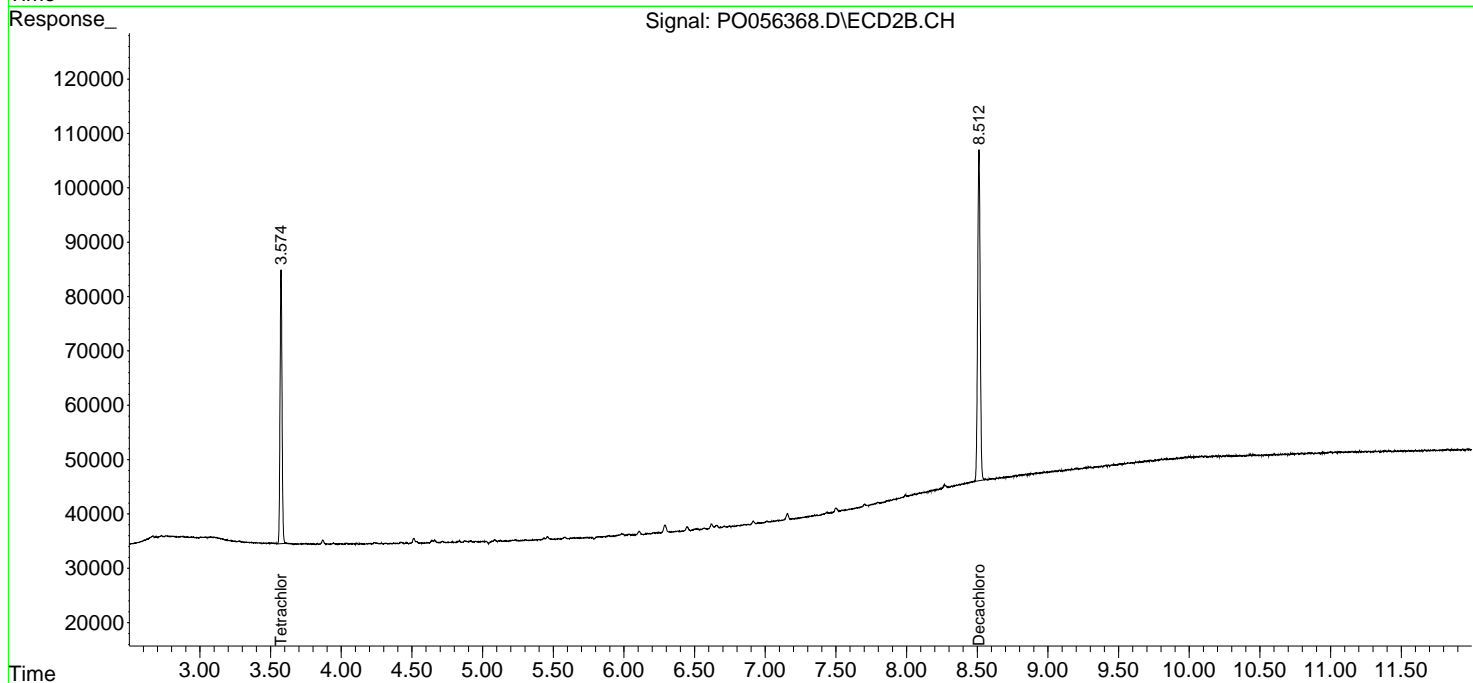
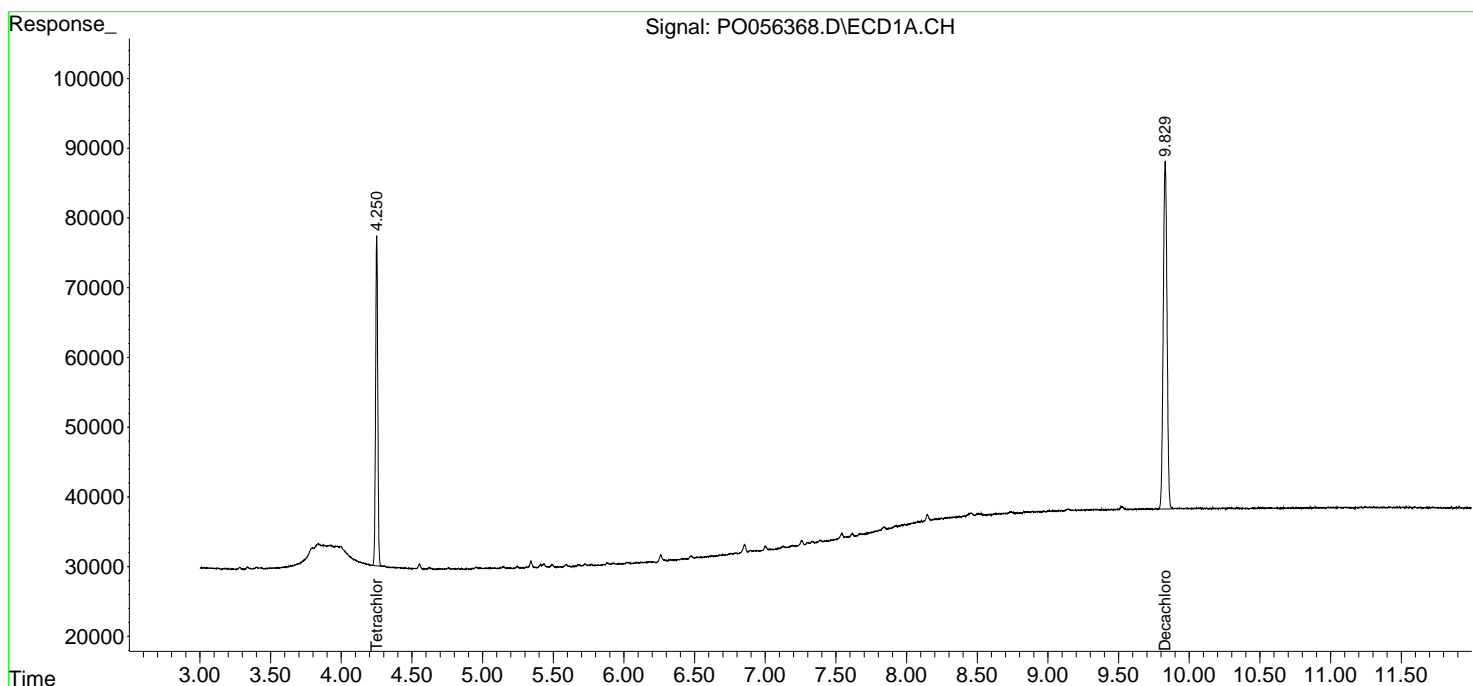
(f)=RT Delta > 1/2 Window (#)=Amounts differ by > 25% (m)=manual int.

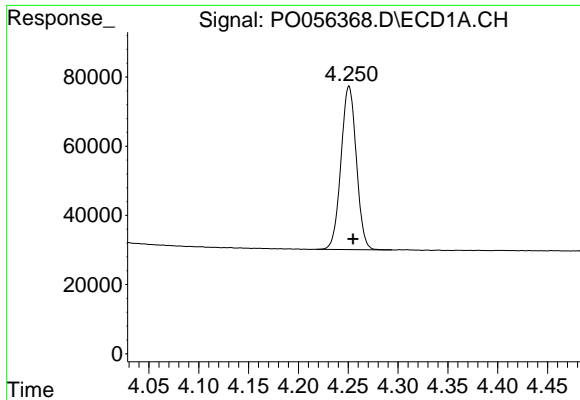
Data Path : Z:\pestpcbsrv\HPCHEM1\ECD_0\Data\P0052019\
 Data File : P0056368.D
 Signal(s) : Signal #1: ECD1A.CH Signal #2: ECD2B.CH
 Acq On : 20 May 2019 12:59
 Operator : SM/SJ
 Sample : I.BLK
 Misc :
 ALS Vial : 2 Sample Multiplier: 1

Instrument :
 ECD_O
 ClientSampleId :
 I.BLK

Integration File signal 1: autoint1.e
 Integration File signal 2: autoint2.e
 Quant Time: May 21 03:51:38 2019
 Quant Method : Z:\pestpcbsrv\HPCHEM1\ECD_0\methods\P0052019.M
 Quant Title : GC EXTRACTABLES
 QLast Update : Tue May 21 03:48:44 2019
 Response via : Initial Calibration
 Integrator: ChemStation 6890 Scale Mode: Small noise peaks clipped

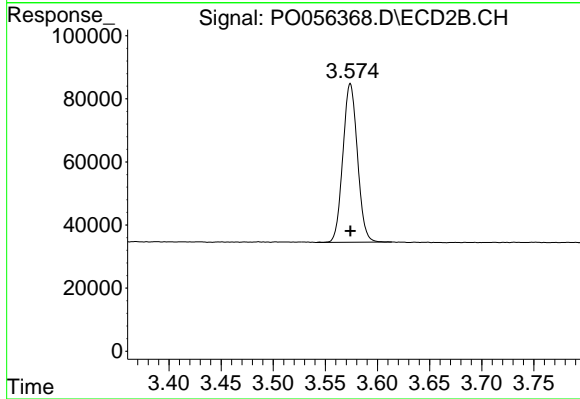
Volume Inj. : 2 µl
 Signal #1 Phase : ZB-MR1 Signal #2 Phase: ZB-MR2
 Signal #1 Info : 30Mx0.32mmx 0.50µ Signal #2 Info : 30M x 0.32mm x 0.25µm



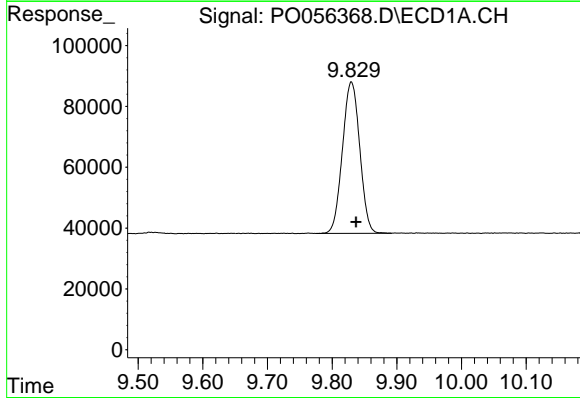


#1 Tetrachloro-m-xylene
 R.T.: 4.251 min
 Delta R.T.: -0.004 min
 Response: 506166
 Conc: 17.57 ng/ml

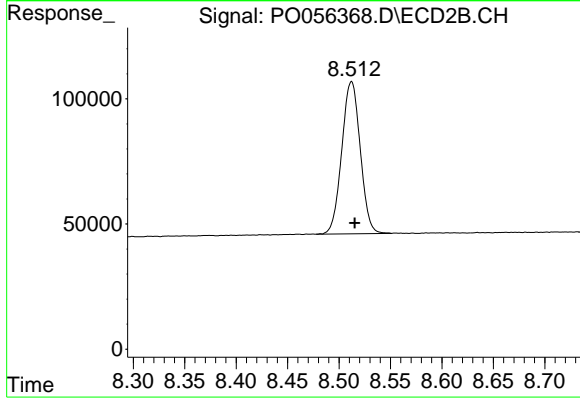
Instrument :
 ECD_O
 ClientSampled :
 I.BLK



#1 Tetrachloro-m-xylene
 R.T.: 3.574 min
 Delta R.T.: 0.000 min
 Response: 489247
 Conc: 18.14 ng/ml



#2 Decachlorobiphenyl
 R.T.: 9.830 min
 Delta R.T.: -0.007 min
 Response: 925040
 Conc: 18.13 ng/ml



#2 Decachlorobiphenyl
 R.T.: 8.512 min
 Delta R.T.: -0.003 min
 Response: 760144
 Conc: 17.30 ng/ml