

Data Path : Z:\pestpcbsrv\HPCHEM1\ECD_0\Data\P0052019\
 Data File : P0056370.D
 Signal(s) : Signal #1: ECD1A.CH Signal #2: ECD2B.CH
 Acq On : 20 May 2019 13:32
 Operator : SM/SJ
 Sample : AR1660ICC750
 Misc :
 ALS Vial : 4 Sample Multiplier: 1

Instrument :
 ECD_0
 ClientSampleId :
 AR1660ICC750

Integration File signal 1: autoint1.e
 Integration File signal 2: autoint2.e
 Quant Time: May 21 02:28:54 2019
 Quant Method : Z:\pestpcbsrv\HPCHEM1\ECD_0\methods\P0052019.M
 Quant Title : GC EXTRACTABLES
 QLast Update : Tue May 21 02:27:59 2019
 Response via : Initial Calibration
 Integrator: ChemStation 6890 Scale Mode: Small noise peaks clipped

Volume Inj. : 2 µl
 Signal #1 Phase : ZB-MR1 Signal #2 Phase: ZB-MR2
 Signal #1 Info : 30Mx0.32mmx 0.50µ Signal #2 Info : 30M x 0.32mm x 0.25µm

Compound	RT#1	RT#2	Resp#1	Resp#2	ng/ml	ng/ml

System Monitoring Compounds						
1) SA Tetrachlo...	4.255	3.575	2084625	1920593	73.632	73.232
2) SA Decachlor...	9.835	8.514	3461069	3069663	71.499	72.833
Target Compounds						
3) L1 AR-1016-1	5.415	4.643	1042561	938945	709.354	716.920
4) L1 AR-1016-2	5.437	4.662	1476499	1296706	718.761	717.479
5) L1 AR-1016-3	5.498	4.835	946786	746752	709.441	715.515
6) L1 AR-1016-4	5.596	4.876	790482	594475	707.433	707.980
7) L1 AR-1016-5	5.888	5.088	838913	810891	702.927	714.254
31) L7 AR-1260-1	7.005	6.110	1688809	1657746	715.902	716.458
32) L7 AR-1260-2	7.262	6.297	2090400	2148526	721.607	721.071
33) L7 AR-1260-3	7.618	6.449	1651158	1971608	724.388	722.273
34) L7 AR-1260-4	7.843	6.917	1912539	1708019	721.121	717.864
35) L7 AR-1260-5	8.151	7.159	3770305	4311016	728.414	728.899

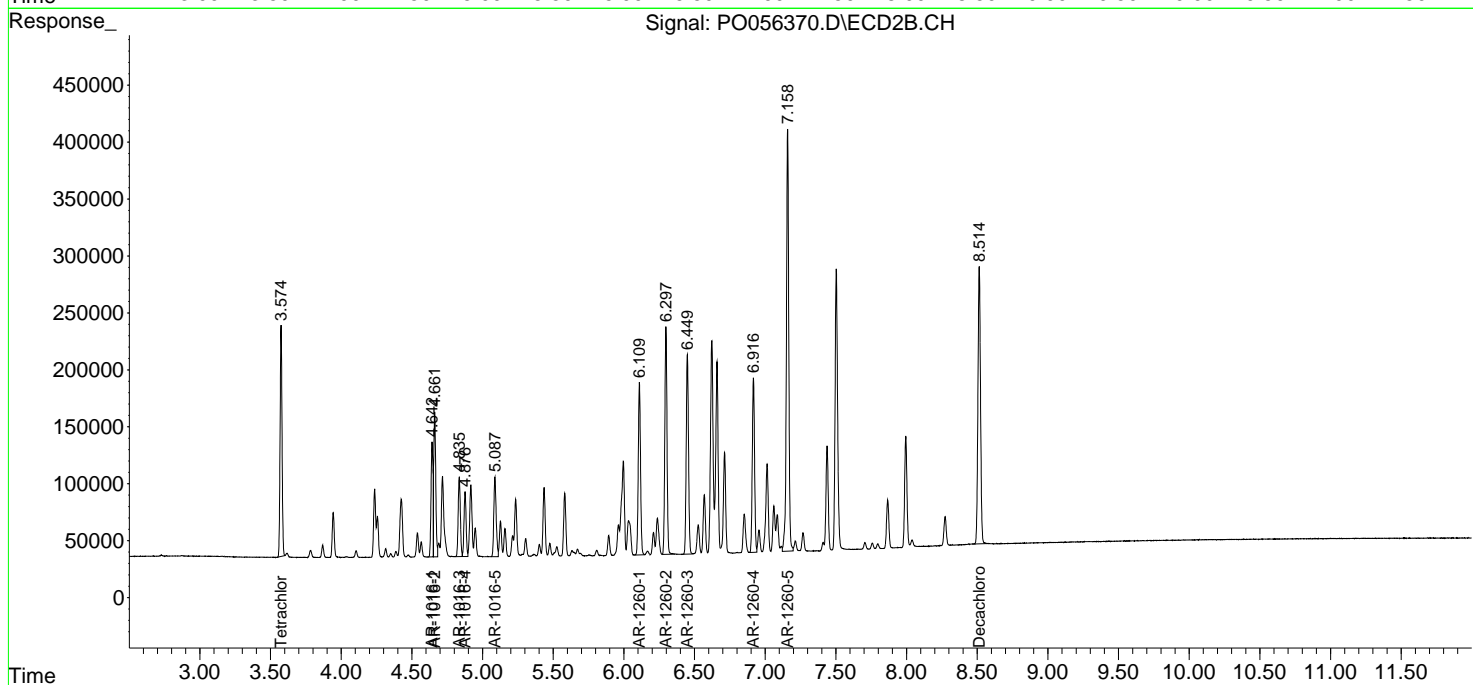
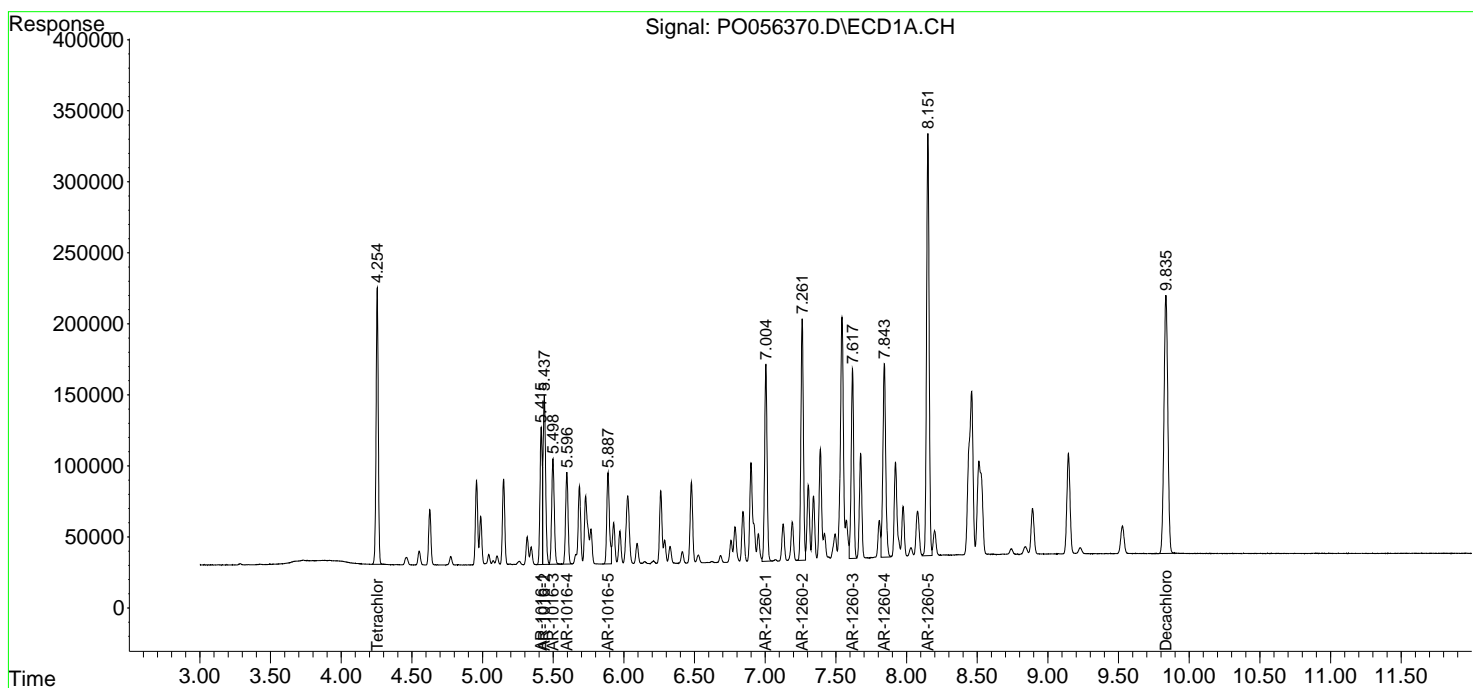
(f)=RT Delta > 1/2 Window (#)=Amounts differ by > 25% (m)=manual int.

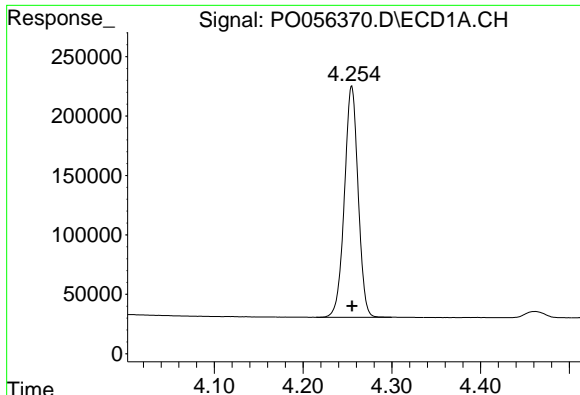
Data Path : Z:\pestpcbsrv\HPCHEM1\ECD_0\Data\P0052019\
 Data File : P0056370.D
 Signal(s) : Signal #1: ECD1A.CH Signal #2: ECD2B.CH
 Acq On : 20 May 2019 13:32
 Operator : SM/SJ
 Sample : AR1660ICC750
 Misc :
 ALS Vial : 4 Sample Multiplier: 1

Instrument :
 ECD_O
 ClientSampled :
 AR1660ICC750

Integration File signal 1: autoint1.e
 Integration File signal 2: autoint2.e
 Quant Time: May 21 02:28:54 2019
 Quant Method : Z:\pestpcbsrv\HPCHEM1\ECD_0\methods\P0052019.M
 Quant Title : GC EXTRACTABLES
 QLast Update : Tue May 21 02:27:59 2019
 Response via : Initial Calibration
 Integrator: ChemStation 6890 Scale Mode: Small noise peaks clipped

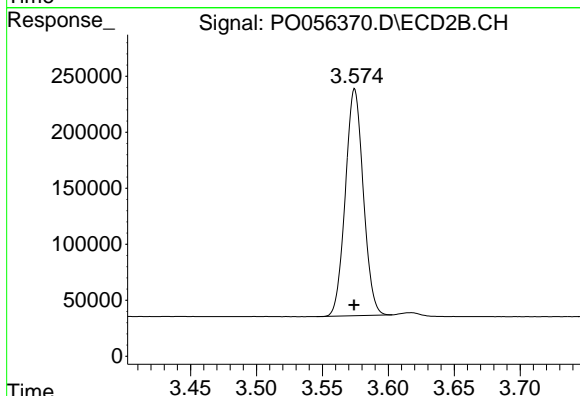
Volume Inj. : 2 µl
 Signal #1 Phase : ZB-MR1 Signal #2 Phase: ZB-MR2
 Signal #1 Info : 30Mx0.32mmx 0.50µ Signal #2 Info : 30M x 0.32mm x 0.25µm



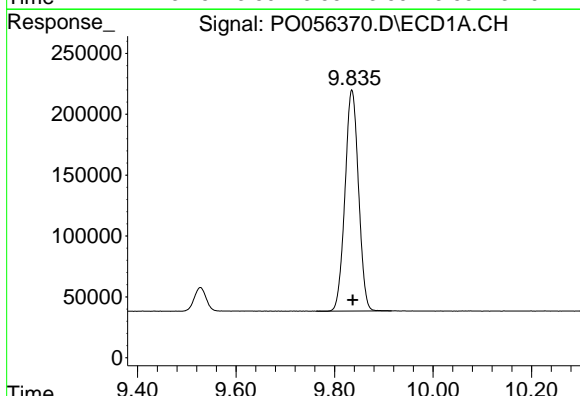


#1 Tetrachloro-m-xylene
 R.T.: 4.255 min
 Delta R.T.: 0.000 min
 Response: 2084625
 Conc: 73.63 ng/ml

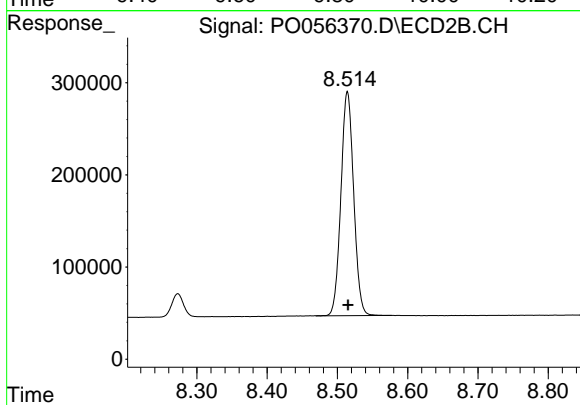
Instrument :
 ECD_O
 ClientSampleId :
 AR1660ICC750



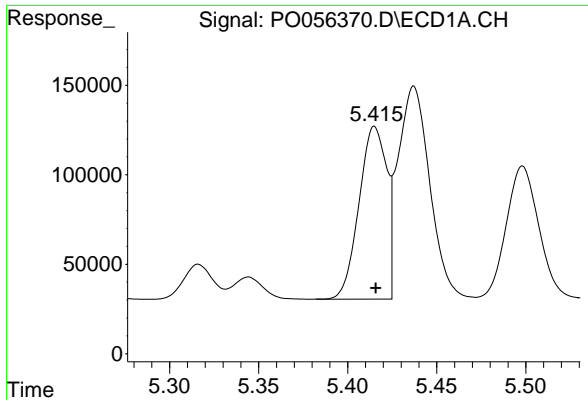
#1 Tetrachloro-m-xylene
 R.T.: 3.575 min
 Delta R.T.: 0.000 min
 Response: 1920593
 Conc: 73.23 ng/ml



#2 Decachlorobiphenyl
 R.T.: 9.835 min
 Delta R.T.: -0.002 min
 Response: 3461069
 Conc: 71.50 ng/ml



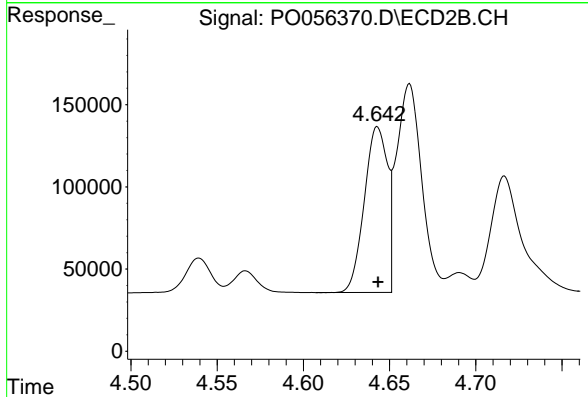
#2 Decachlorobiphenyl
 R.T.: 8.514 min
 Delta R.T.: 0.000 min
 Response: 3069663
 Conc: 72.83 ng/ml



#3 AR-1016-1

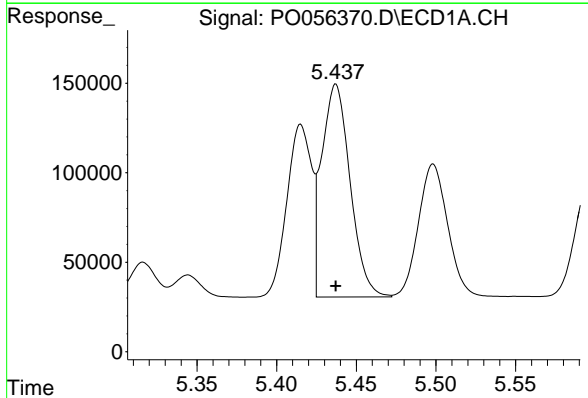
R.T.: 5.415 min
 Delta R.T.: 0.000 min
 Response: 1042561
 Conc: 709.35 ng/ml

Instrument :
 ECD_O
 ClientSampled :
 AR1660ICC750



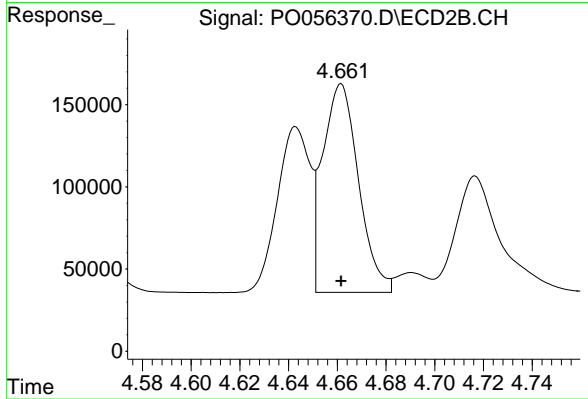
#3 AR-1016-1

R.T.: 4.643 min
 Delta R.T.: 0.000 min
 Response: 938945
 Conc: 716.92 ng/ml



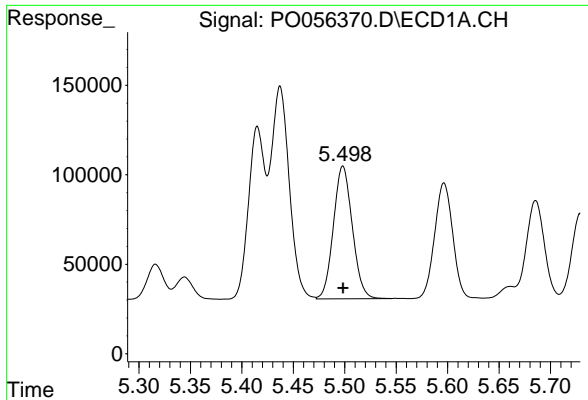
#4 AR-1016-2

R.T.: 5.437 min
 Delta R.T.: 0.000 min
 Response: 1476499
 Conc: 718.76 ng/ml



#4 AR-1016-2

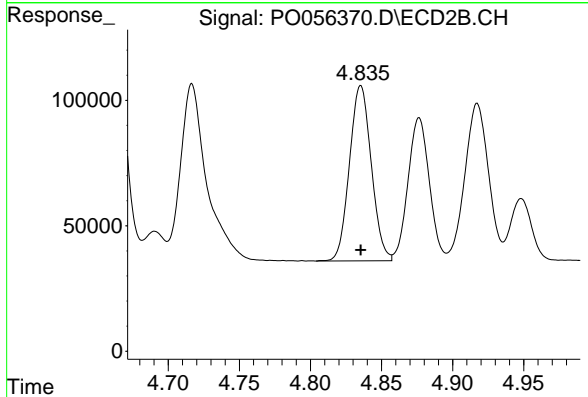
R.T.: 4.662 min
 Delta R.T.: 0.000 min
 Response: 1296706
 Conc: 717.48 ng/ml



#5 AR-1016-3

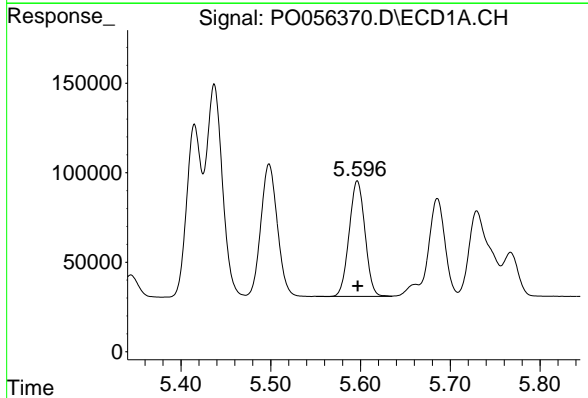
R.T.: 5.498 min
 Delta R.T.: 0.000 min
 Response: 946786
 Conc: 709.44 ng/ml

Instrument :
 ECD_O
 ClientSampled :
 AR1660ICC750



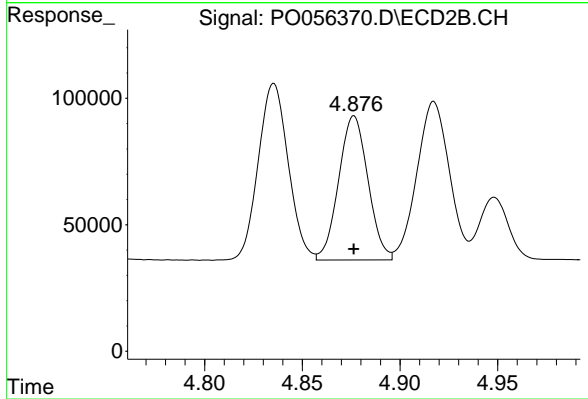
#5 AR-1016-3

R.T.: 4.835 min
 Delta R.T.: 0.000 min
 Response: 746752
 Conc: 715.52 ng/ml



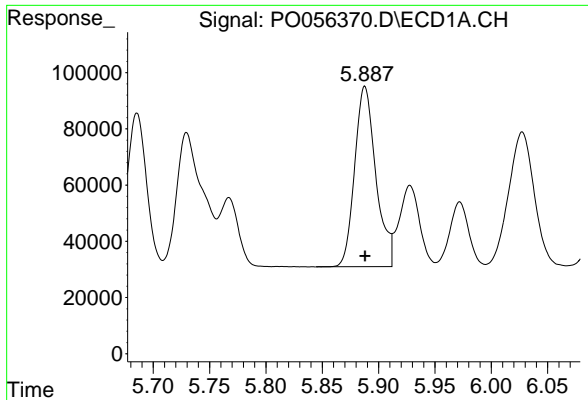
#6 AR-1016-4

R.T.: 5.596 min
 Delta R.T.: 0.000 min
 Response: 790482
 Conc: 707.43 ng/ml



#6 AR-1016-4

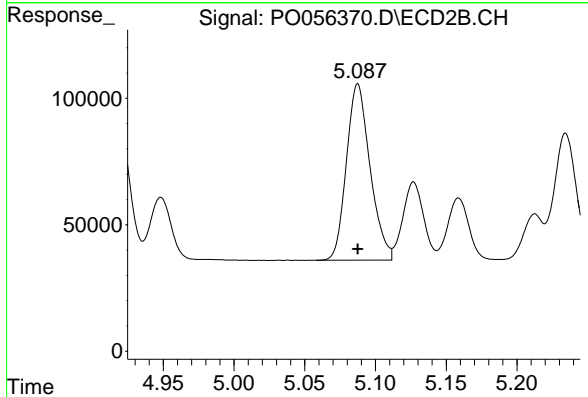
R.T.: 4.876 min
 Delta R.T.: 0.000 min
 Response: 594475
 Conc: 707.98 ng/ml



#7 AR-1016-5

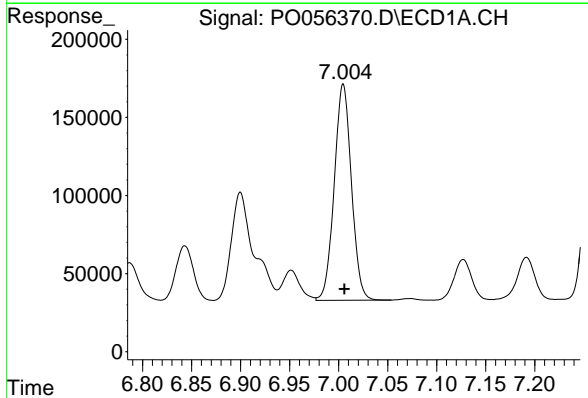
R.T.: 5.888 min
 Delta R.T.: 0.000 min
 Response: 838913
 Conc: 702.93 ng/ml

Instrument :
 ECD_O
 ClientSampleId :
 AR1660ICC750



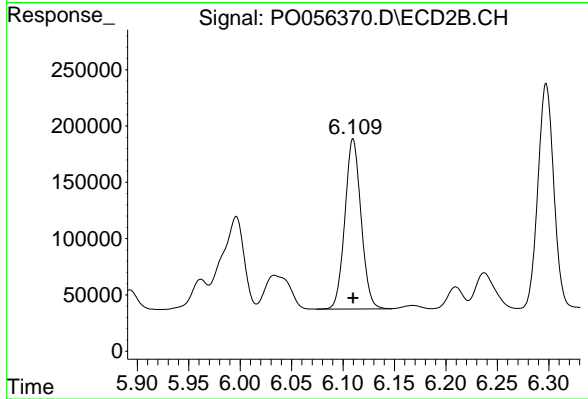
#7 AR-1016-5

R.T.: 5.088 min
 Delta R.T.: 0.000 min
 Response: 810891
 Conc: 714.25 ng/ml



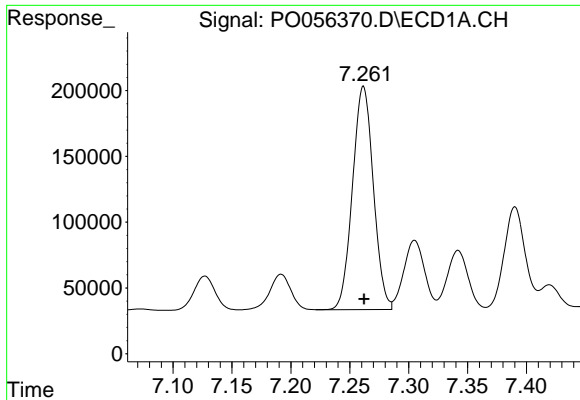
#31 AR-1260-1

R.T.: 7.005 min
 Delta R.T.: -0.001 min
 Response: 1688809
 Conc: 715.90 ng/ml



#31 AR-1260-1

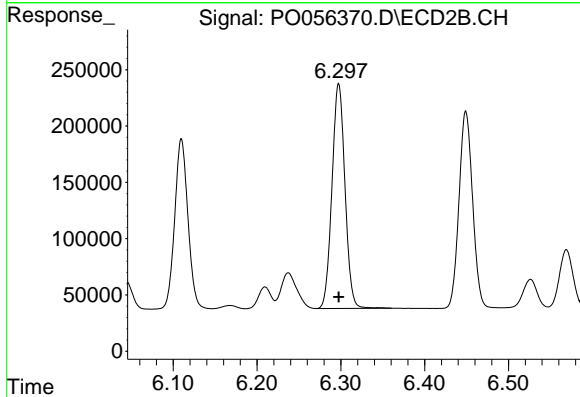
R.T.: 6.110 min
 Delta R.T.: 0.000 min
 Response: 1657746
 Conc: 716.46 ng/ml



#32 AR-1260-2

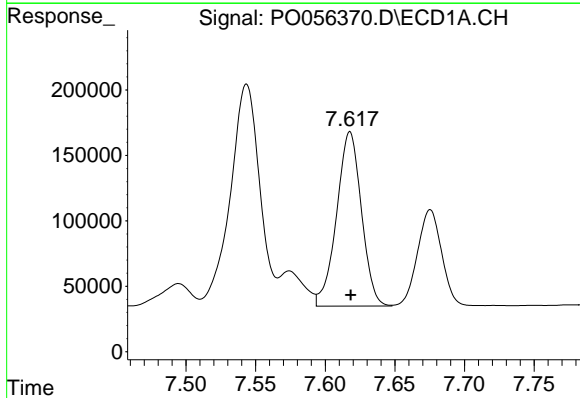
R.T.: 7.262 min
 Delta R.T.: 0.000 min
 Response: 2090400
 Conc: 721.61 ng/ml

Instrument :
 ECD_O
 ClientSampled :
 AR1660ICC750



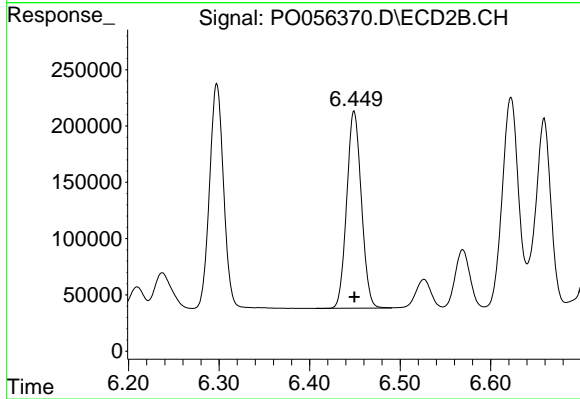
#32 AR-1260-2

R.T.: 6.297 min
 Delta R.T.: 0.000 min
 Response: 2148526
 Conc: 721.07 ng/ml



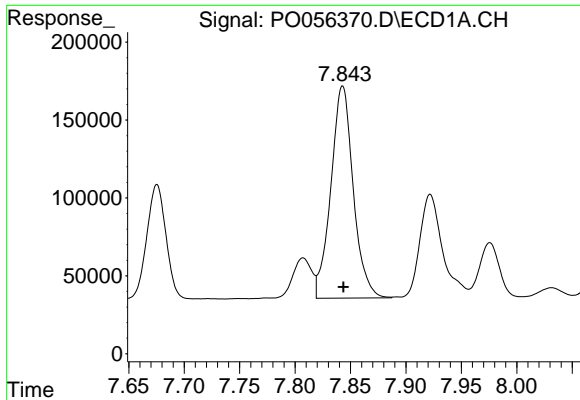
#33 AR-1260-3

R.T.: 7.618 min
 Delta R.T.: 0.000 min
 Response: 1651158
 Conc: 724.39 ng/ml



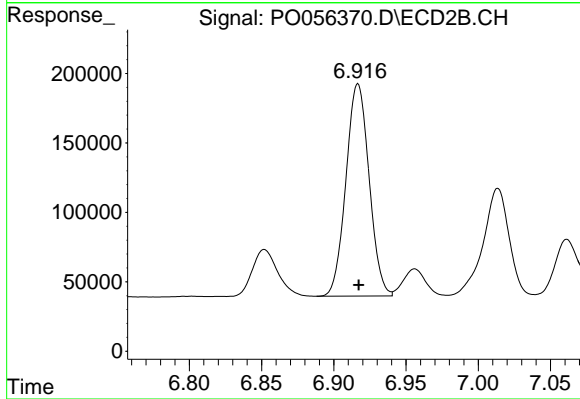
#33 AR-1260-3

R.T.: 6.449 min
 Delta R.T.: 0.000 min
 Response: 1971608
 Conc: 722.27 ng/ml

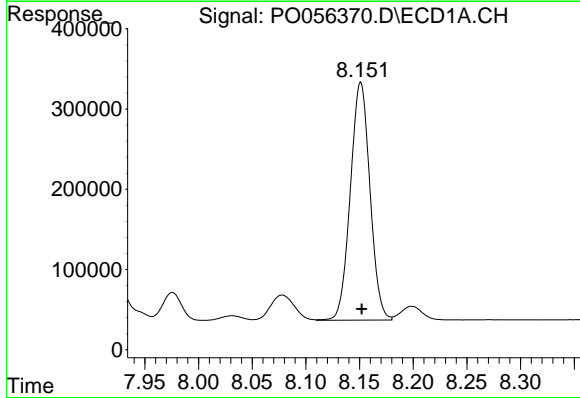


#34 AR-1260-4
 R.T.: 7.843 min
 Delta R.T.: 0.000 min
 Response: 1912539
 Conc: 721.12 ng/ml

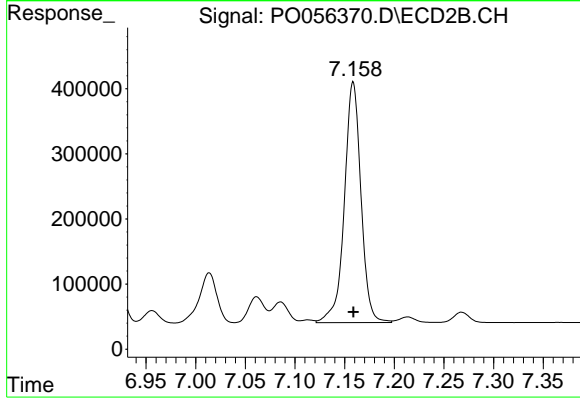
Instrument :
 ECD_O
 ClientSampled :
 AR1660ICC750



#34 AR-1260-4
 R.T.: 6.917 min
 Delta R.T.: 0.000 min
 Response: 1708019
 Conc: 717.86 ng/ml



#35 AR-1260-5
 R.T.: 8.151 min
 Delta R.T.: -0.001 min
 Response: 3770305
 Conc: 728.41 ng/ml



#35 AR-1260-5
 R.T.: 7.159 min
 Delta R.T.: 0.000 min
 Response: 4311016
 Conc: 728.90 ng/ml