

Data Path : Z:\pestpcbsrv\HPCHEM1\ECD_0\Data\P0052019\
 Data File : P0056407.D
 Signal(s) : Signal #1: ECD1A.CH Signal #2: ECD2B.CH
 Acq On : 21 May 2019 00:48
 Operator : SM/SJ
 Sample : K2241-08
 Misc : AR1268 LOQ 100PPB
 ALS Vial : 27 Sample Multiplier: 1

Instrument :
 ECD_0
ClientSampleId :
 LOQ-WATER-02-QT2-2019

Manual Integrations
APPROVED
 Ankita
 5/21/2019 4:50:05 PM

Integration File signal 1: autoint1.e
 Integration File signal 2: autoint2.e
 Quant Time: May 21 04:04:51 2019
 Quant Method : Z:\pestpcbsrv\HPCHEM1\ECD_0\methods\P0052019.M
 Quant Title : GC EXTRACTABLES
 QLast Update : Tue May 21 03:48:44 2019
 Response via : Initial Calibration
 Integrator: ChemStation 6890 Scale Mode: Small noise peaks clipped

Volume Inj. : 2 µl
 Signal #1 Phase : ZB-MR1 Signal #2 Phase: ZB-MR2
 Signal #1 Info : 30Mx0.32mmx 0.50µ Signal #2 Info : 30M x 0.32mm x 0.25µm

Compound	RT#1	RT#2	Resp#1	Resp#2	ng/ml	ng/ml

System Monitoring Compounds						
1) SA Tetrachlo...	4.258	3.575	552132	505280	19.171	18.735
2) SA Decachlor...	9.843	8.517	1338764	1121177	26.236	25.522
Target Compounds						
41) L9 AR-1268-1	8.447	7.439	722703	765903	108.793	101.210m
42) L9 AR-1268-2	8.537	7.504	664948	675643	107.890	101.108
43) L9 AR-1268-3	8.747	7.707	565284	582719	110.092	102.797
44) L9 AR-1268-4	9.152	7.997	233142	226368	104.016	98.280
45) L9 AR-1268-5	9.534	8.275	1622630	1526228	104.290	97.319

(f)=RT Delta > 1/2 Window (#)=Amounts differ by > 25% (m)=manual int.

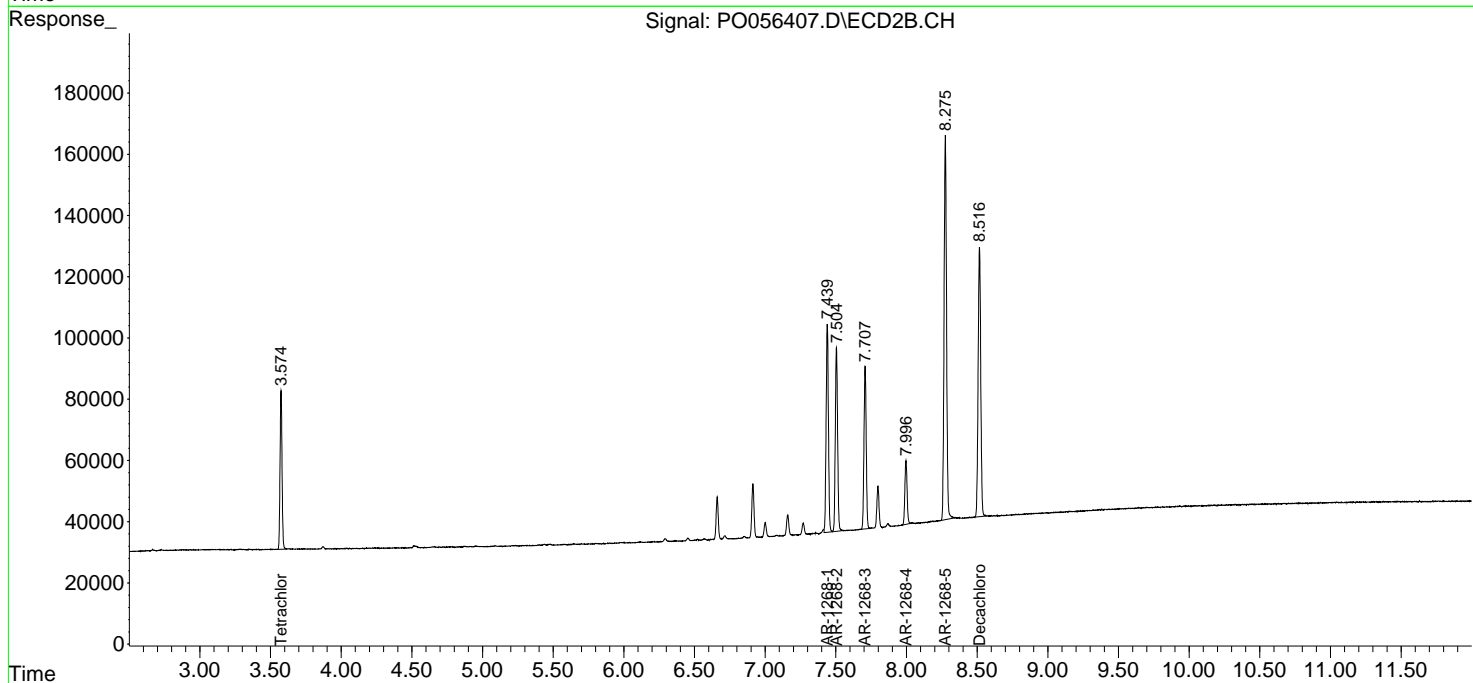
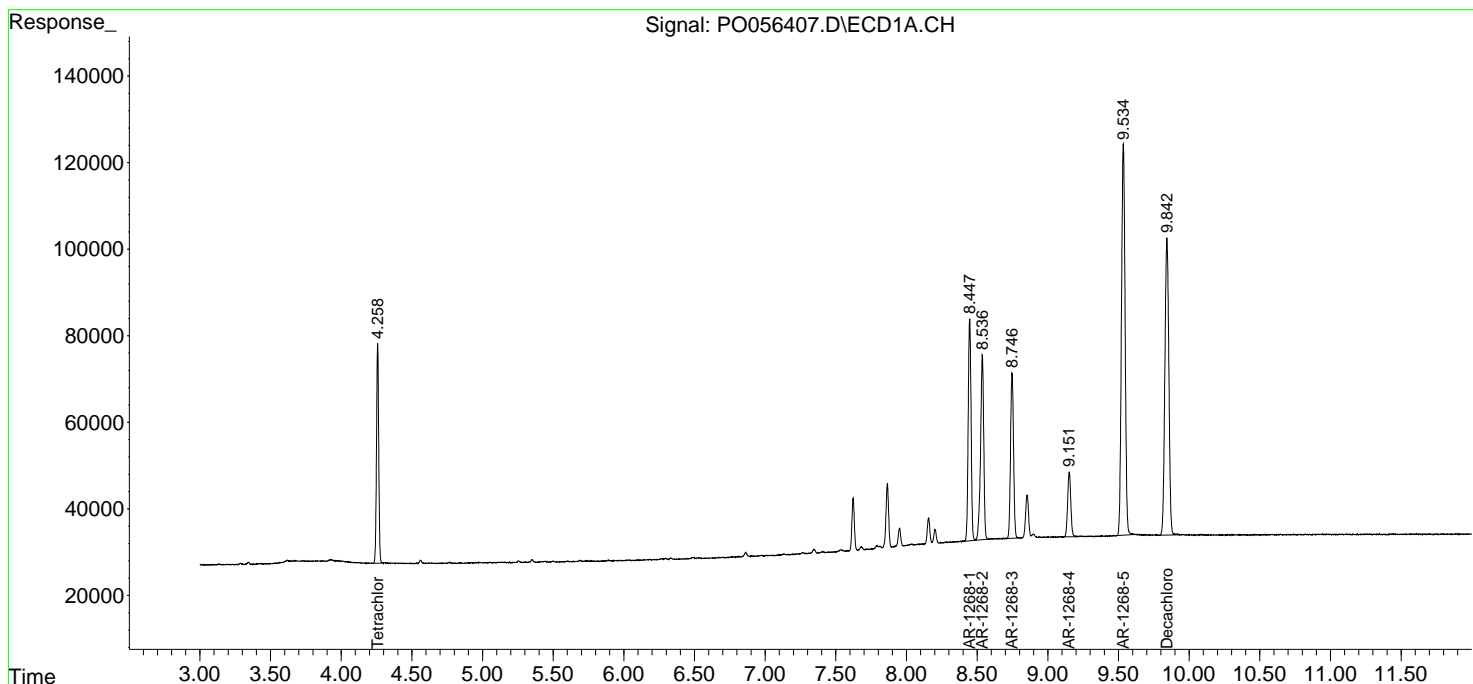
Data Path : Z:\pestpcbsrv\HPCHEM1\ECD_0\Data\P0052019\
 Data File : P0056407.D
 Signal(s) : Signal #1: ECD1A.CH Signal #2: ECD2B.CH
 Acq On : 21 May 2019 00:48
 Operator : SM/SJ
 Sample : K2241-08
 Misc : AR1268 LOQ 100PPB
 ALS Vial : 27 Sample Multiplier: 1

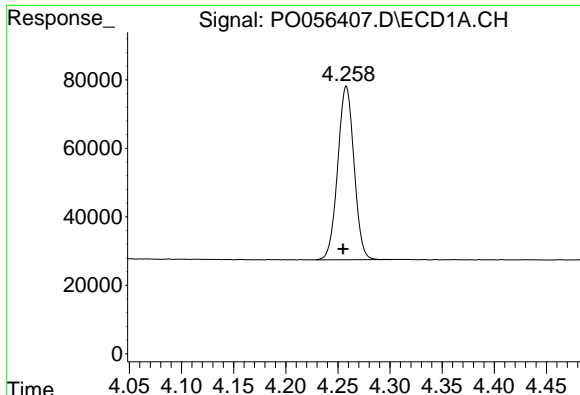
Instrument :
 ECD_O
Client Sampled :
 LOQ-WATER-02-QT2-2019

Manual Integrations
APPROVED
 Ankita
 5/21/2019 4:50:05 PM

Integration File signal 1: autoint1.e
 Integration File signal 2: autoint2.e
 Quant Time: May 21 04:04:51 2019
 Quant Method : Z:\pestpcbsrv\HPCHEM1\ECD_0\methods\P0052019.M
 Quant Title : GC EXTRACTABLES
 QLast Update : Tue May 21 03:48:44 2019
 Response via : Initial Calibration
 Integrator: ChemStation 6890 Scale Mode: Small noise peaks clipped

Volume Inj. : 2 µl
 Signal #1 Phase : ZB-MR1 Signal #2 Phase: ZB-MR2
 Signal #1 Info : 30Mx0.32mmx 0.50µ Signal #2 Info : 30M x 0.32mm x 0.25µm

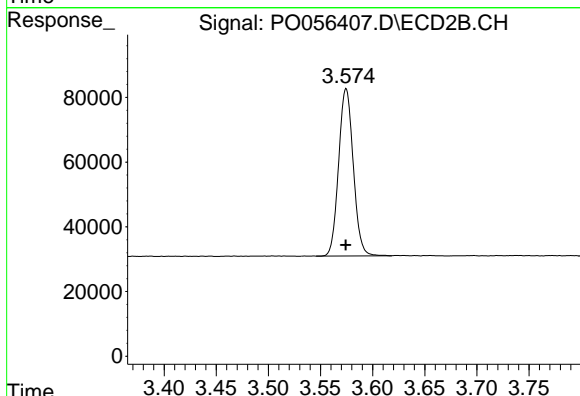




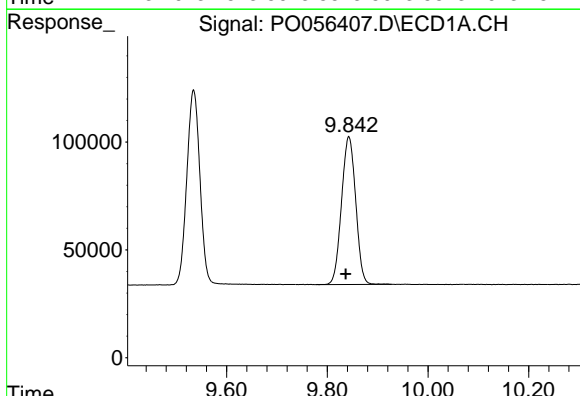
#1 Tetrachloro-m-xylene
 R.T.: 4.258 min
 Delta R.T.: 0.003 min
 Response: 552132
 Conc: 19.17 ng/ml

Instrument :
 ECD_O
ClientSampled :
 LOQ-WATER-02-QT2-2019

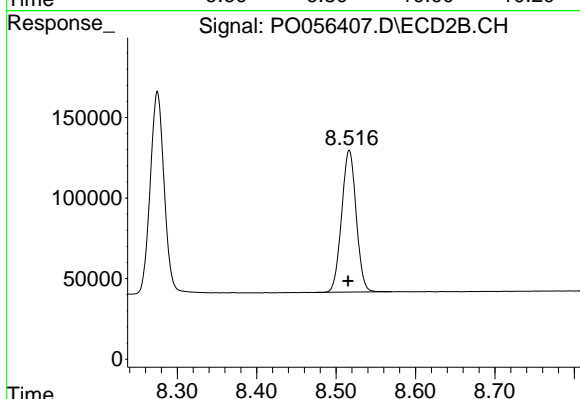
Manual Integrations
APPROVED
 Ankita
 5/21/2019 4:50:05 PM



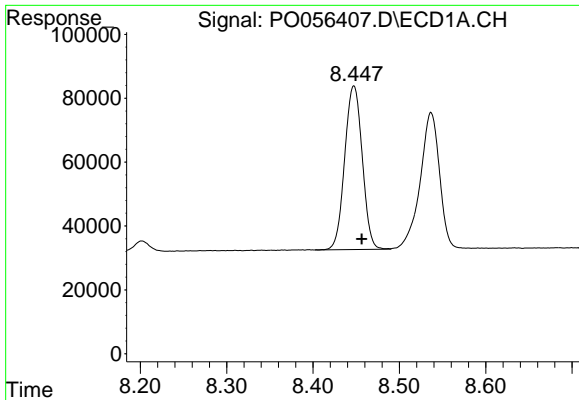
#1 Tetrachloro-m-xylene
 R.T.: 3.575 min
 Delta R.T.: 0.000 min
 Response: 505280
 Conc: 18.74 ng/ml



#2 Decachlorobiphenyl
 R.T.: 9.843 min
 Delta R.T.: 0.006 min
 Response: 1338764
 Conc: 26.24 ng/ml



#2 Decachlorobiphenyl
 R.T.: 8.517 min
 Delta R.T.: 0.001 min
 Response: 1121177
 Conc: 25.52 ng/ml

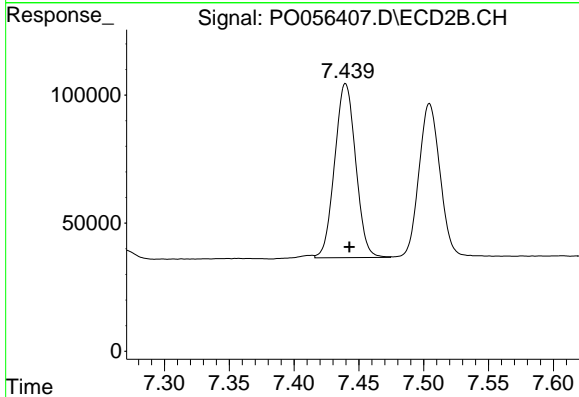


#41 AR-1268-1

R.T.: 8.447 min
 Delta R.T.: -0.009 min
 Response: 722703
 Conc: 108.79 ng/ml

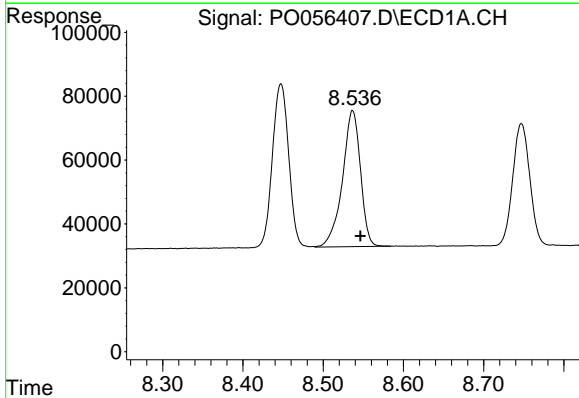
Instrument :
 ECD_O
ClientSampled :
 LOQ-WATER-02-QT2-2019

Manual Integrations
APPROVED
 Ankita
 5/21/2019 4:50:05 PM



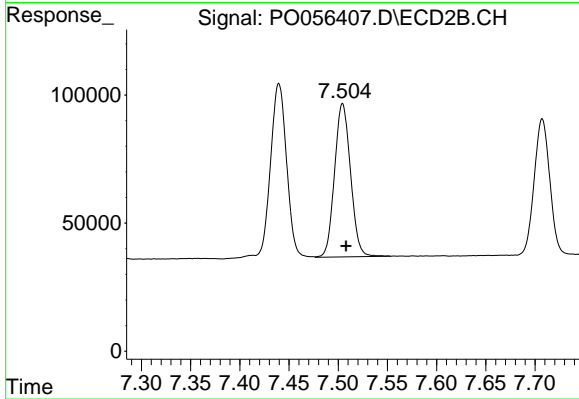
#41 AR-1268-1

R.T.: 7.439 min
 Delta R.T.: -0.004 min
 Response: 765903
 Conc: 101.21 ng/ml m



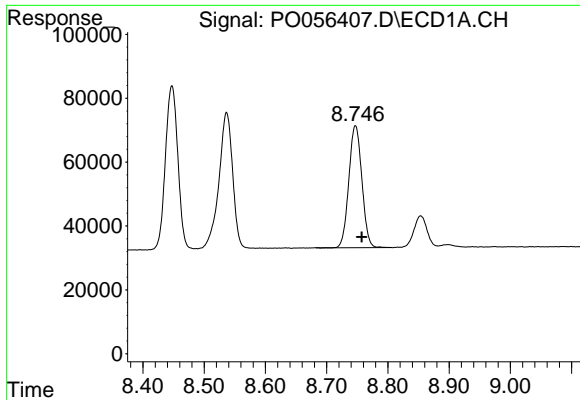
#42 AR-1268-2

R.T.: 8.537 min
 Delta R.T.: -0.010 min
 Response: 664948
 Conc: 107.89 ng/ml



#42 AR-1268-2

R.T.: 7.504 min
 Delta R.T.: -0.004 min
 Response: 675643
 Conc: 101.11 ng/ml

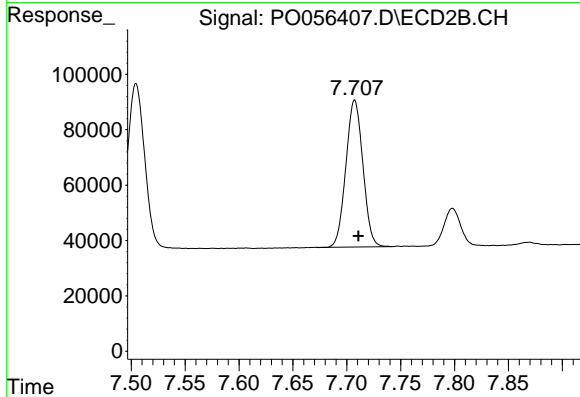


#43 AR-1268-3

R.T.: 8.747 min
 Delta R.T.: -0.011 min
 Response: 565284
 Conc: 110.09 ng/ml

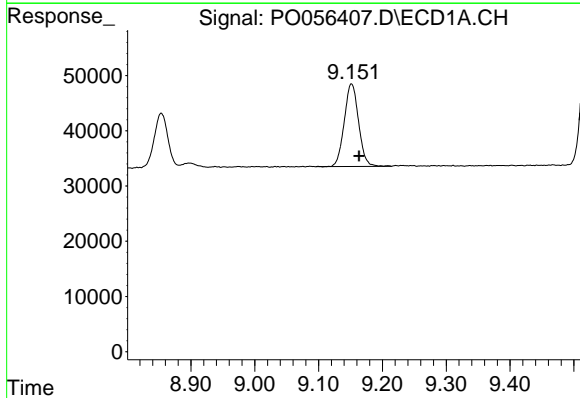
Instrument :
 ECD_O
ClientSampled :
 LOQ-WATER-02-QT2-2019

Manual Integrations
APPROVED
 Ankita
 5/21/2019 4:50:05 PM



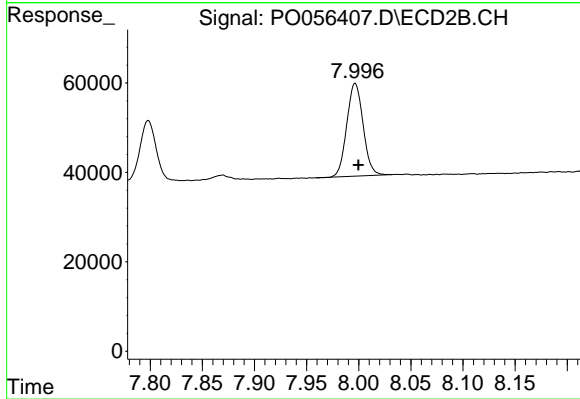
#43 AR-1268-3

R.T.: 7.707 min
 Delta R.T.: -0.003 min
 Response: 582719
 Conc: 102.80 ng/ml



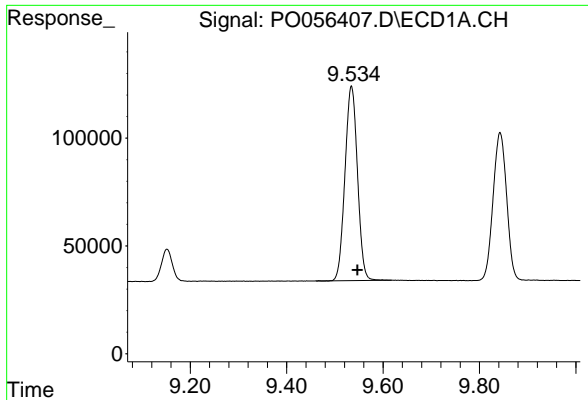
#44 AR-1268-4

R.T.: 9.152 min
 Delta R.T.: -0.012 min
 Response: 233142
 Conc: 104.02 ng/ml



#44 AR-1268-4

R.T.: 7.997 min
 Delta R.T.: -0.003 min
 Response: 226368
 Conc: 98.28 ng/ml

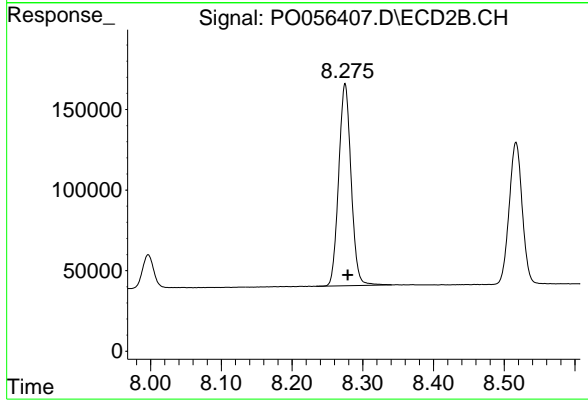


#45 AR-1268-5

R.T.: 9.534 min
Delta R.T.: -0.013 min
Response: 1622630
Conc: 104.29 ng/ml

Instrument :
ECD_O
ClientSampled :
LOQ-WATER-02-QT2-2019

Manual Integrations
APPROVED
Ankita
5/21/2019 4:50:05 PM



#45 AR-1268-5

R.T.: 8.275 min
Delta R.T.: -0.004 min
Response: 1526228
Conc: 97.32 ng/ml