

Data Path : Z:\pestpcbsrv\HPCHEM1\ECD_0\Data\P0052120\
 Data File : P0068528.D
 Signal(s) : Signal #1: ECD1A.CH Signal #2: ECD2B.CH
 Acq On : 21 May 2020 16:33
 Operator : DD\AJ
 Sample : AR1660CCC500
 Misc :
 ALS Vial : 3 Sample Multiplier: 1

Instrument :
 ECD_0
 ClientSampled :

Integration File signal 1: autoint1.e
 Integration File signal 2: autoint2.e
 Quant Time: May 21 17:07:58 2020
 Quant Method : Z:\pestpcbsrv\HPCHEM1\ECD_0\methods\P0050820.M
 Quant Title : GC EXTRACTABLES
 QLast Update : Fri May 08 13:29:29 2020
 Response via : Initial Calibration
 Integrator: ChemStation 6890 Scale Mode: Small noise peaks clipped

Volume Inj. : 2 µl
 Signal #1 Phase : ZB-MR1 Signal #2 Phase: ZB-MR2
 Signal #1 Info : 30Mx0.32mmx 0.50µ Signal #2 Info : 30M x 0.32mm x 0.25µm

Compound	RT#1	RT#2	Resp#1	Resp#2	ng/ml	ng/ml
System Monitoring Compounds						
1) SA Tetrachlo...	4.896	3.931	1523545	1736188	54.322	50.597
2) SA Decachlor...	10.841	9.201	1741181	1731331	43.756	44.970
Target Compounds						
3) L1 AR-1016-1	6.216	5.183	592372	710734	541.339	508.986
4) L1 AR-1016-2	6.240	5.203	822626	959315	547.961	516.368
5) L1 AR-1016-3	6.305	5.392	501230	526184	537.816	522.092
6) L1 AR-1016-4	6.413	5.446	416511	427845	542.348	513.840
7) L1 AR-1016-5	6.726	5.672	365167	522339	480.299	486.409
8) L2 AR-1221-1	5.143	4.186	48088	57481	155.310	142.380
9) L2 AR-1221-2	5.247	4.285	71342	86239	305.710	286.296
10) L2 AR-1221-3	5.335	4.374	274855	337497	363.267	360.382
11) L3 AR-1232-1	5.335	4.374	274855	337497	447.518	437.555
12) L3 AR-1232-2	5.922	5.203	392294	959315	1272.991	1197.880
13) L3 AR-1232-3	6.240	5.392	822626	526184	1290.268	1239.024
14) L3 AR-1232-4	6.413	5.490	416511	500714	1323.302	1333.637
15) L3 AR-1232-5	6.509	5.672	329346	522339	1556.549	1253.698
16) L4 AR-1242-1	6.240	5.183	822626	710734	934.970	654.465 #
17) L4 AR-1242-2	6.240	5.203	822626	959315	688.079	676.406
18) L4 AR-1242-3	6.305	5.392	501230	526184	670.894	660.306
19) L4 AR-1242-4	6.413	5.490	416511	500714	680.154	648.070
20) L4 AR-1242-5	7.193	6.051	77846	414863	105.405	411.360 #
21) L5 AR-1248-1	6.240	5.183	822626	710734	1240.993	875.655 #
22) L5 AR-1248-2	6.509	5.446	329346	427845	395.027	402.793
23) L5 AR-1248-3	6.726	5.490	365167	500714	371.238	468.397 #
24) L5 AR-1248-4	7.153	5.672	95498	522339	80.956	404.780 #
25) L5 AR-1248-5	7.193	6.094	77846	77780	69.892	59.788
26) L6 AR-1254-1	7.122	6.051	302545	414863	254.402	204.725
27) L6 AR-1254-2	7.350	6.211	318240	367557	172.390	205.124
28) L6 AR-1254-3	7.730	6.648	180739	745434	93.355	259.065 #
29) L6 AR-1254-4	8.024	6.868	125994	127776	78.719	66.233
30) L6 AR-1254-5	8.480	7.295	131923	1230770	80.304	456.375 #
31) L7 AR-1260-1	7.895	6.766	711563	960387	510.728	500.392
32) L7 AR-1260-2	8.159	6.963	915977	1150015	516.261	490.177
33) L7 AR-1260-3	8.522	7.116	755948	1020728	520.357	468.391
34) L7 AR-1260-4	8.752	7.598	744001	869583	477.790	457.122
35) L7 AR-1260-5	9.072	7.845	1680778	2075180	505.989	466.941
36) L8 AR-1262-1	8.522	7.295	755948	1230770	377.858	865.210 #
37) L8 AR-1262-2	9.072	7.845	1680778	2075180	466.264	446.520
38) L8 AR-1262-3	9.397	8.130	526306	513838	202.766	266.115 #
39) L8 AR-1262-4	9.448	8.192	630633	1533715	305.227	436.654 #
40) L8 AR-1262-5	10.206	8.689	19067	604665	12.481	350.510 #
41) L9 AR-1268-1	9.397	8.130	526306	513838	110.535	91.309

Data Path : Z:\pestpcbsrv\HPCHEM1\ECD_0\Data\P0052120\
 Data File : P0068528.D
 Signal(s) : Signal #1: ECD1A.CH Signal #2: ECD2B.CH
 Acq On : 21 May 2020 16:33
 Operator : DD\AJ
 Sample : AR1660CCC500
 Misc :
 ALS Vial : 3 Sample Multiplier: 1

Instrument :
 ECD_0
 ClientSampleId :

Integration File signal 1: autoint1.e
 Integration File signal 2: autoint2.e
 Quant Time: May 21 17:07:58 2020
 Quant Method : Z:\pestpcbsrv\HPCHEM1\ECD_0\methods\P0050820.M
 Quant Title : GC EXTRACTABLES
 QLast Update : Fri May 08 13:29:29 2020
 Response via : Initial Calibration
 Integrator: ChemStation 6890 Scale Mode: Small noise peaks clipped

Volume Inj. : 2 µl
 Signal #1 Phase : ZB-MR1 Signal #2 Phase: ZB-MR2
 Signal #1 Info : 30Mx0.32mmx 0.50µ Signal #2 Info : 30M x 0.32mm x 0.25µm

	Compound	RT#1	RT#2	Resp#1	Resp#2	ng/ml	ng/ml
42)	L9 AR-1268-2	9.448	8.192	630633	1533715	137.857	299.800 #
43)	L9 AR-1268-3	9.687	8.401	34006	37204	8.599	8.775
44)	L9 AR-1268-4	10.206	8.689	19067	604665	10.683	298.779 #
45)	L9 AR-1268-5	10.518	8.964	166537	171115	12.827	12.995

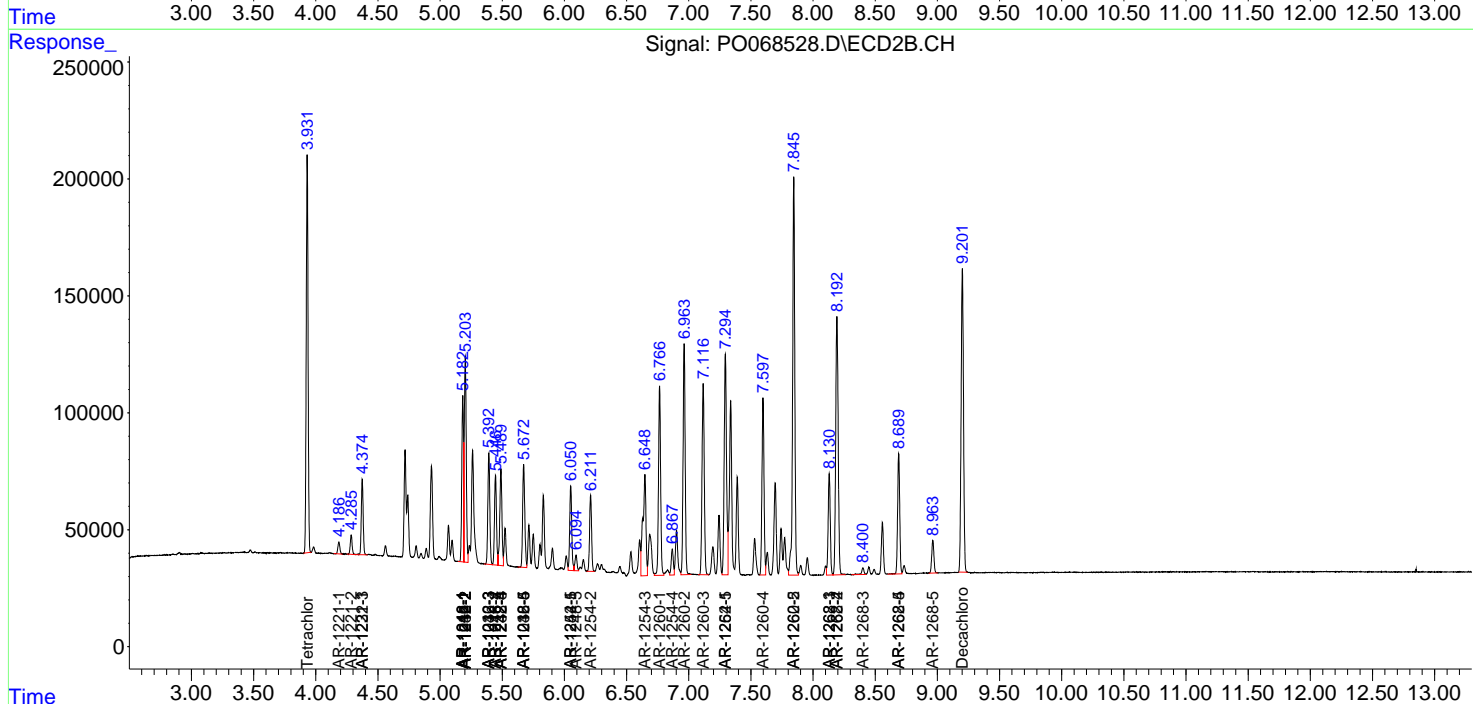
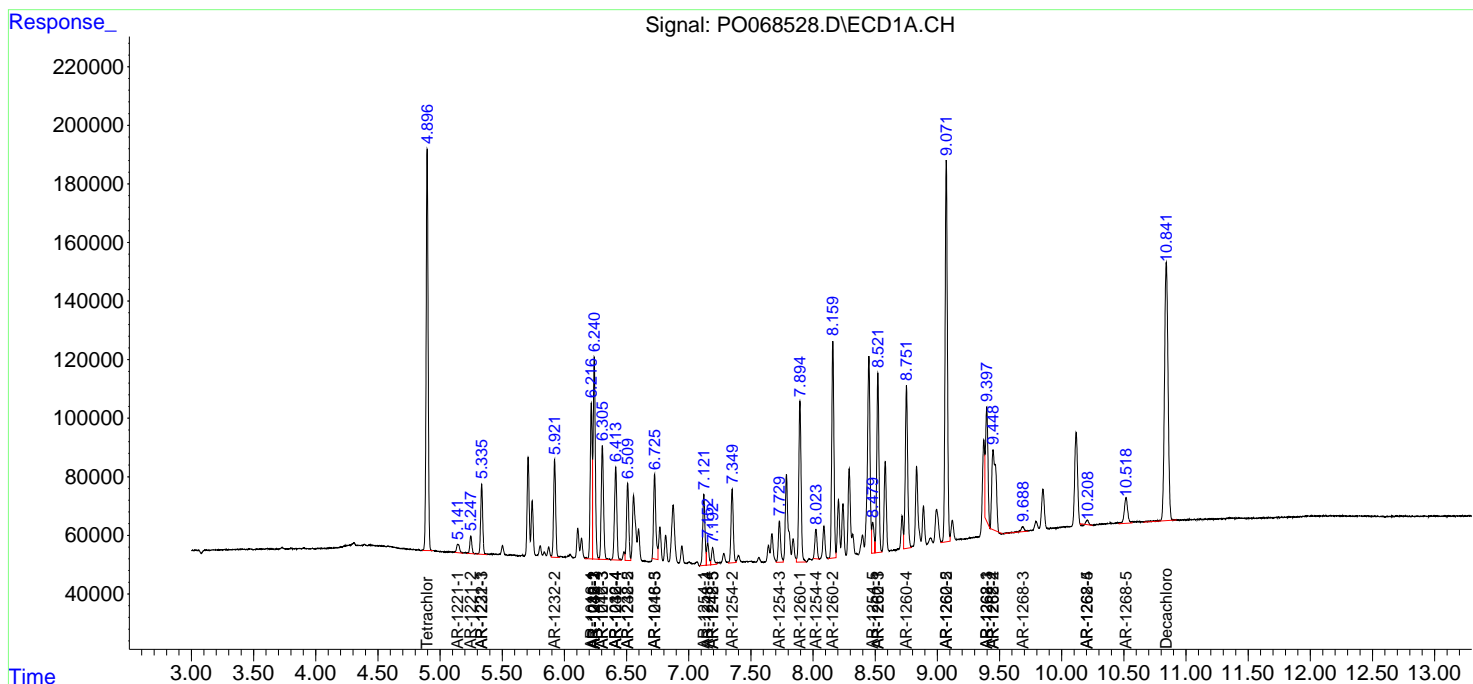
(f)=RT Delta > 1/2 Window (#)=Amounts differ by > 25% (m)=manual int.

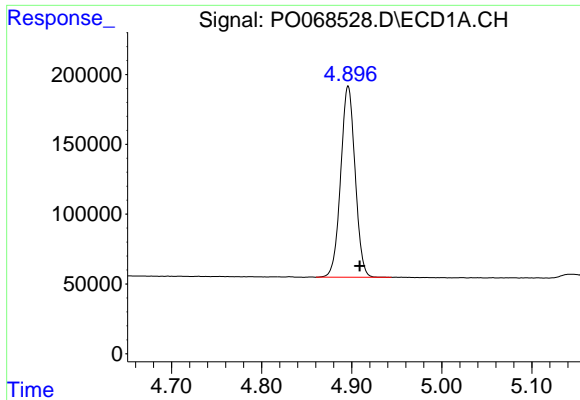
Data Path : Z:\pestpcbsrv\HPCHEM1\ECD_0\Data\P0052120\
 Data File : P0068528.D
 Signal(s) : Signal #1: ECD1A.CH Signal #2: ECD2B.CH
 Acq On : 21 May 2020 16:33
 Operator : DD\AJ
 Sample : AR1660CCC500
 Misc :
 ALS Vial : 3 Sample Multiplier: 1

Instrument :
 ECD_O
 ClientSampled :

Integration File signal 1: autoint1.e
 Integration File signal 2: autoint2.e
 Quant Time: May 21 17:07:58 2020
 Quant Method : Z:\pestpcbsrv\HPCHEM1\ECD_0\methods\P0050820.M
 Quant Title : GC EXTRACTABLES
 QLast Update : Fri May 08 13:29:29 2020
 Response via : Initial Calibration
 Integrator: ChemStation 6890 Scale Mode: Small noise peaks clipped

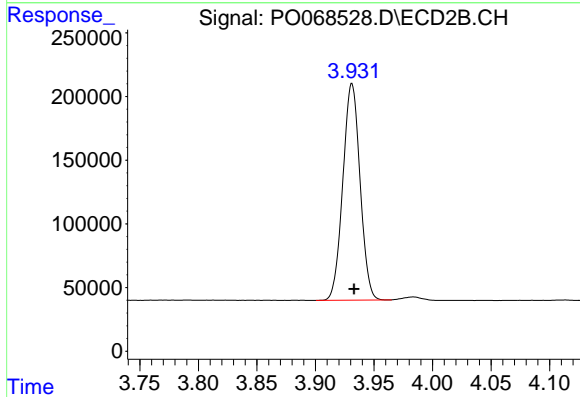
Volume Inj. : 2 µl
 Signal #1 Phase : ZB-MR1 Signal #2 Phase: ZB-MR2
 Signal #1 Info : 30Mx0.32mmx 0.50µ Signal #2 Info : 30M x 0.32mm x 0.25µm



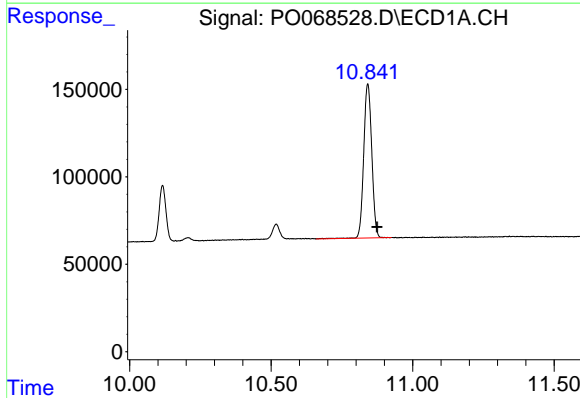


#1 Tetrachloro-m-xylene
 R.T.: 4.896 min
 Delta R.T.: -0.013 min
 Response: 1523545
 Conc: 54.32 ng/ml

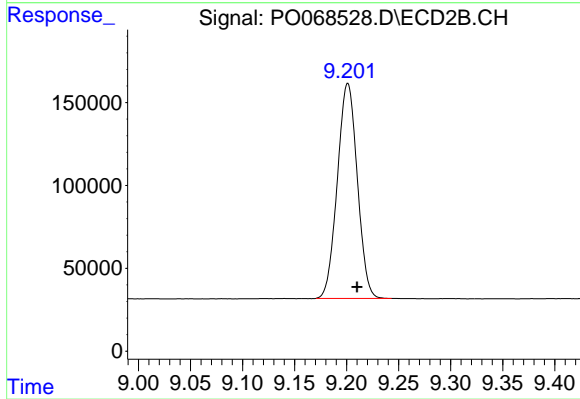
Instrument :
 ECD_O
 ClientSampled :



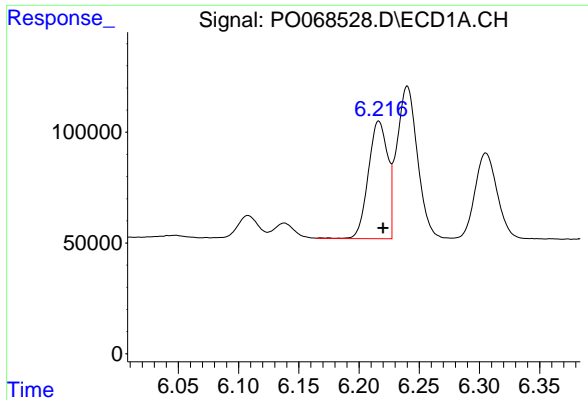
#1 Tetrachloro-m-xylene
 R.T.: 3.931 min
 Delta R.T.: -0.002 min
 Response: 1736188
 Conc: 50.60 ng/ml



#2 Decachlorobiphenyl
 R.T.: 10.841 min
 Delta R.T.: -0.032 min
 Response: 1741181
 Conc: 43.76 ng/ml

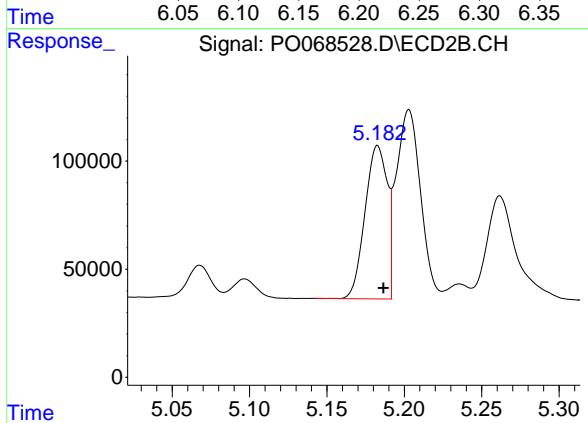


#2 Decachlorobiphenyl
 R.T.: 9.201 min
 Delta R.T.: -0.009 min
 Response: 1731331
 Conc: 44.97 ng/ml

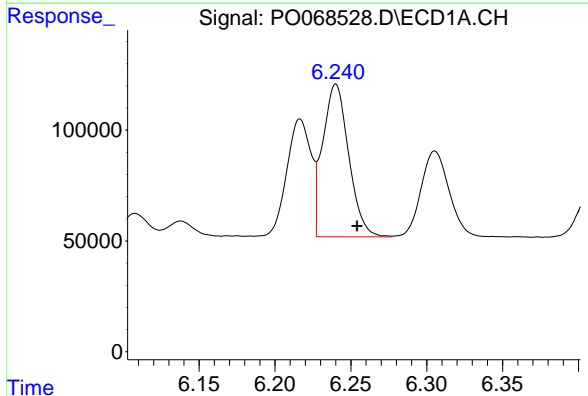


#3 AR-1016-1
 R.T.: 6.216 min
 Delta R.T.: -0.004 min
 Response: 592372
 Conc: 541.34 ng/ml

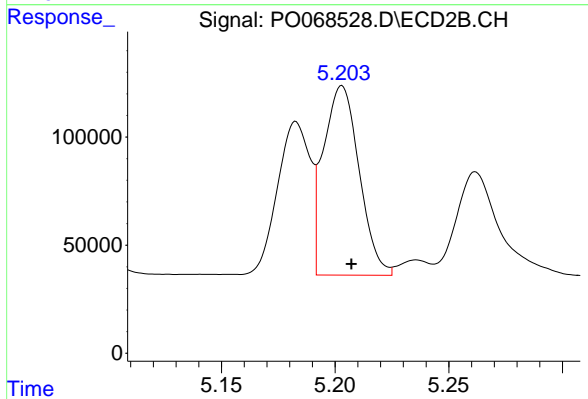
Instrument :
 ECD_O
 ClientSampled :



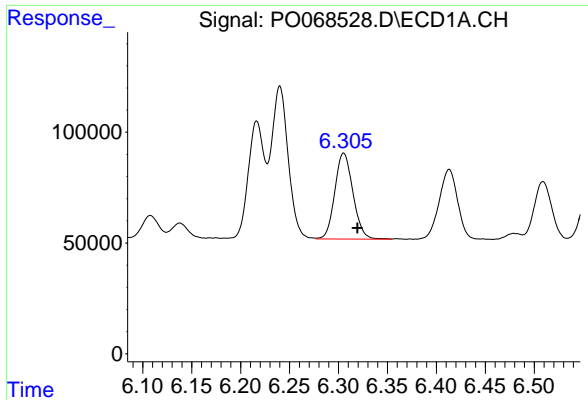
#3 AR-1016-1
 R.T.: 5.183 min
 Delta R.T.: -0.004 min
 Response: 710734
 Conc: 508.99 ng/ml



#4 AR-1016-2
 R.T.: 6.240 min
 Delta R.T.: -0.014 min
 Response: 822626
 Conc: 547.96 ng/ml

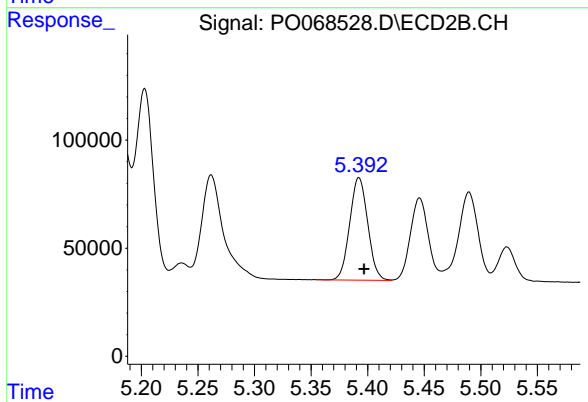


#4 AR-1016-2
 R.T.: 5.203 min
 Delta R.T.: -0.004 min
 Response: 959315
 Conc: 516.37 ng/ml

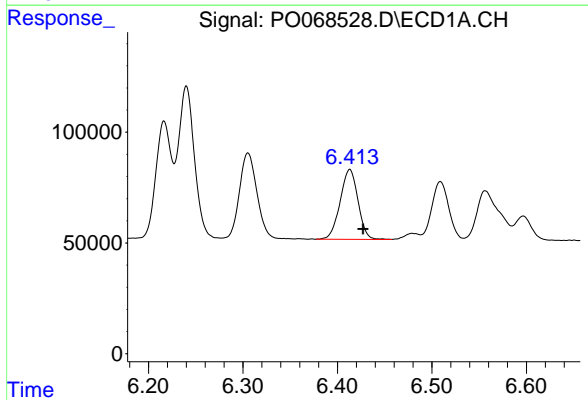


#5 AR-1016-3
R.T.: 6.305 min
Delta R.T.: -0.014 min
Response: 501230
Conc: 537.82 ng/ml

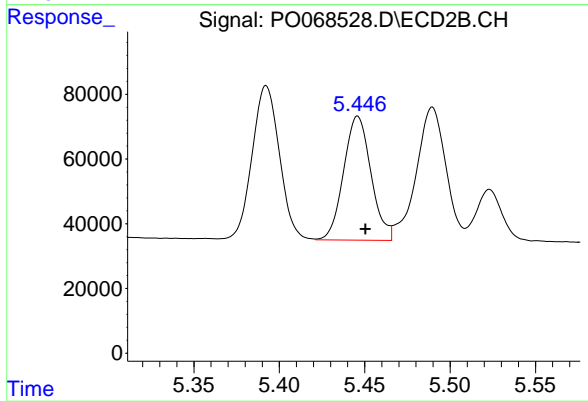
Instrument :
ECD_O
ClientSampleId :



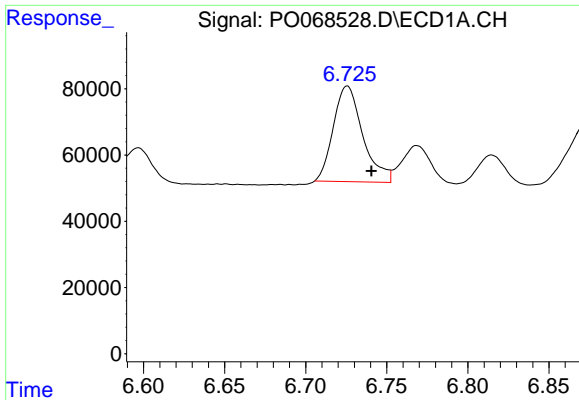
#5 AR-1016-3
R.T.: 5.392 min
Delta R.T.: -0.005 min
Response: 526184
Conc: 522.09 ng/ml



#6 AR-1016-4
R.T.: 6.413 min
Delta R.T.: -0.014 min
Response: 416511
Conc: 542.35 ng/ml



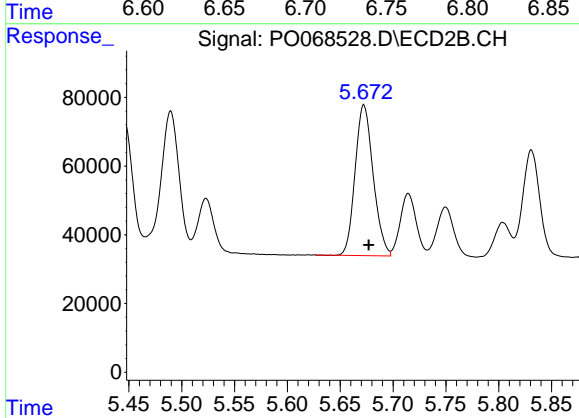
#6 AR-1016-4
R.T.: 5.446 min
Delta R.T.: -0.004 min
Response: 427845
Conc: 513.84 ng/ml



#7 AR-1016-5

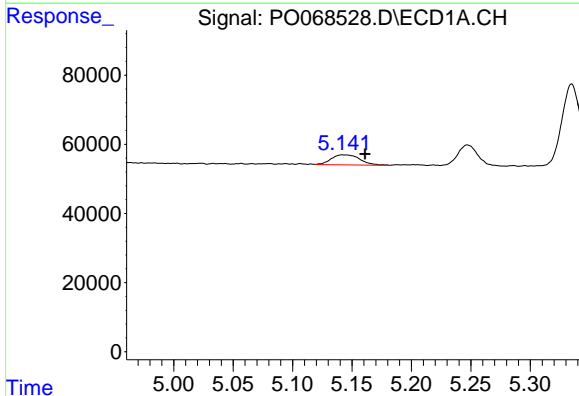
R.T.: 6.726 min
 Delta R.T.: -0.015 min
 Response: 365167
 Conc: 480.30 ng/ml

Instrument :
 ECD_O
 ClientSampleId :



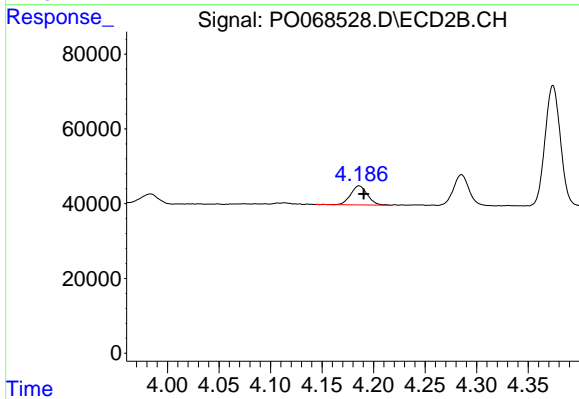
#7 AR-1016-5

R.T.: 5.672 min
 Delta R.T.: -0.005 min
 Response: 522339
 Conc: 486.41 ng/ml



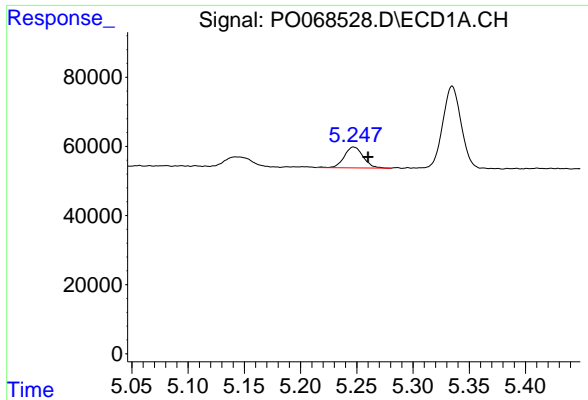
#8 AR-1221-1

R.T.: 5.143 min
 Delta R.T.: -0.018 min
 Response: 48088
 Conc: 155.31 ng/ml



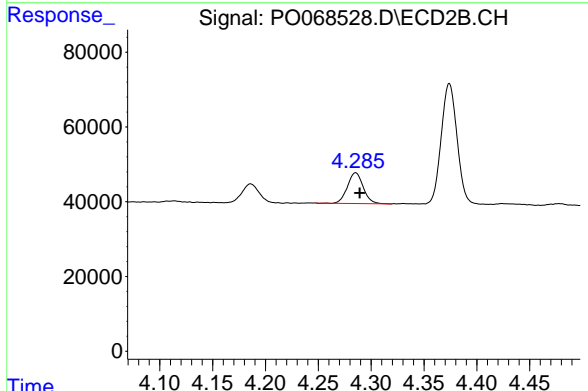
#8 AR-1221-1

R.T.: 4.186 min
 Delta R.T.: -0.004 min
 Response: 57481
 Conc: 142.38 ng/ml

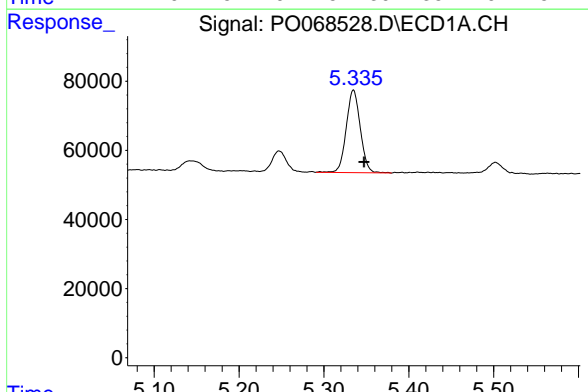


#9 AR-1221-2
 R.T.: 5.247 min
 Delta R.T.: -0.013 min
 Response: 71342
 Conc: 305.71 ng/ml

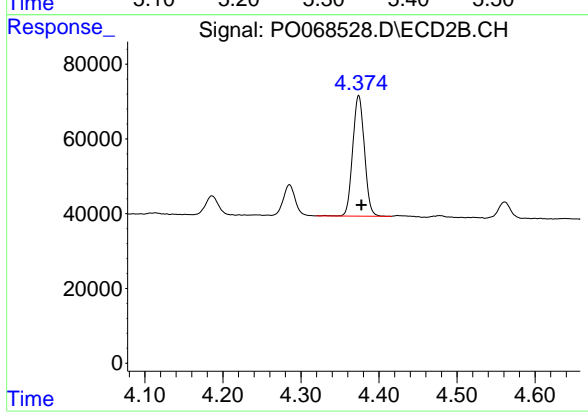
Instrument :
 ECD_O
 ClientSampleId :



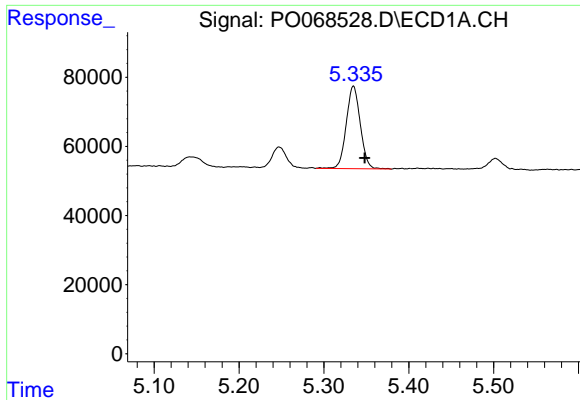
#9 AR-1221-2
 R.T.: 4.285 min
 Delta R.T.: -0.004 min
 Response: 86239
 Conc: 286.30 ng/ml



#10 AR-1221-3
 R.T.: 5.335 min
 Delta R.T.: -0.012 min
 Response: 274855
 Conc: 363.27 ng/ml

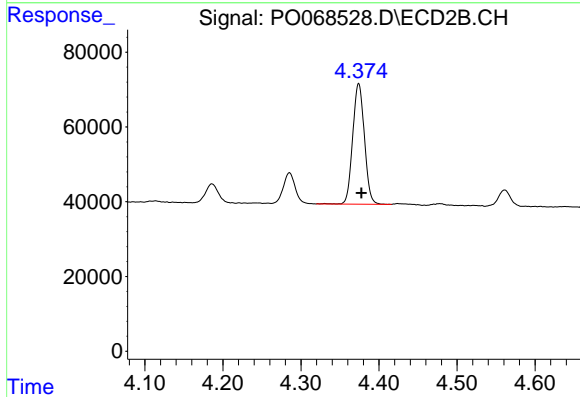


#10 AR-1221-3
 R.T.: 4.374 min
 Delta R.T.: -0.003 min
 Response: 337497
 Conc: 360.38 ng/ml

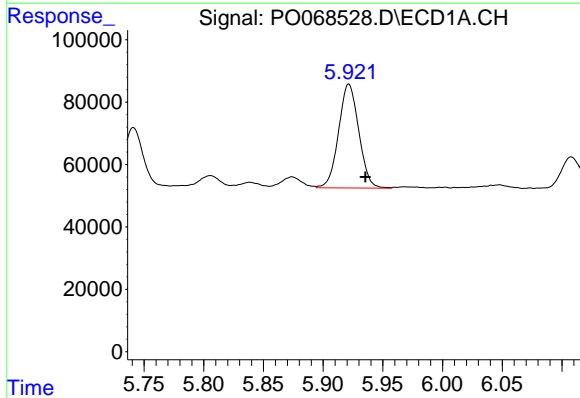


#11 AR-1232-1
 R.T.: 5.335 min
 Delta R.T.: -0.013 min
 Response: 274855
 Conc: 447.52 ng/ml

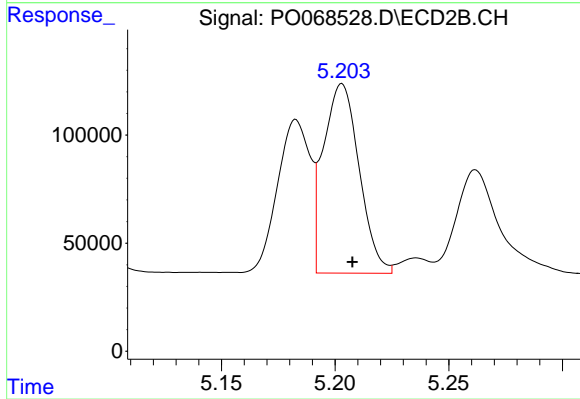
Instrument :
 ECD_O
 ClientSampled :



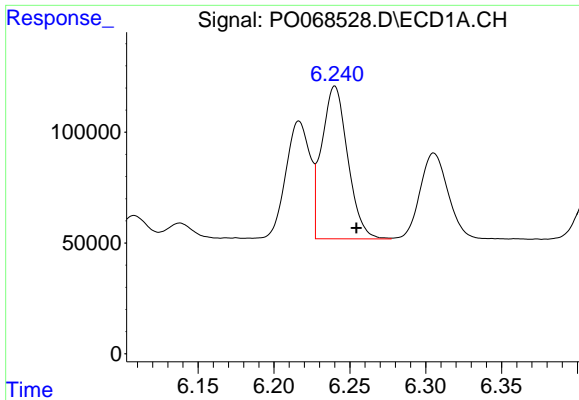
#11 AR-1232-1
 R.T.: 4.374 min
 Delta R.T.: -0.004 min
 Response: 337497
 Conc: 437.56 ng/ml



#12 AR-1232-2
 R.T.: 5.922 min
 Delta R.T.: -0.014 min
 Response: 392294
 Conc: 1272.99 ng/ml



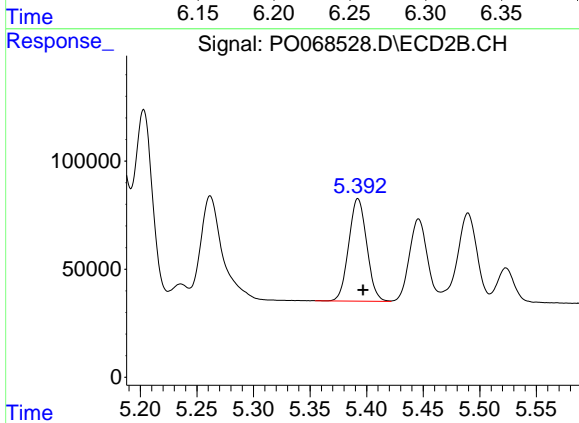
#12 AR-1232-2
 R.T.: 5.203 min
 Delta R.T.: -0.005 min
 Response: 959315
 Conc: 1197.88 ng/ml



#13 AR-1232-3

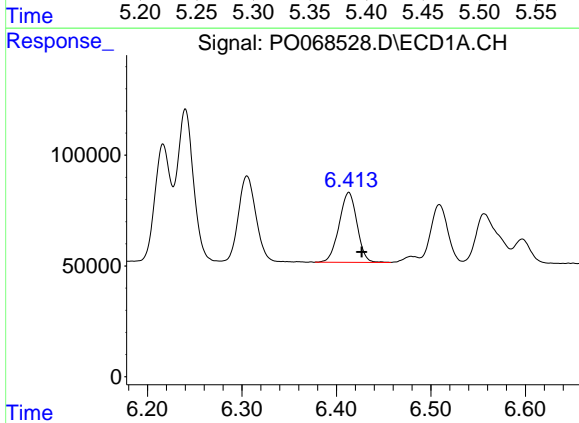
R.T.: 6.240 min
 Delta R.T.: -0.014 min
 Response: 822626
 Conc: 1290.27 ng/ml

Instrument :
 ECD_O
 ClientSampleId :



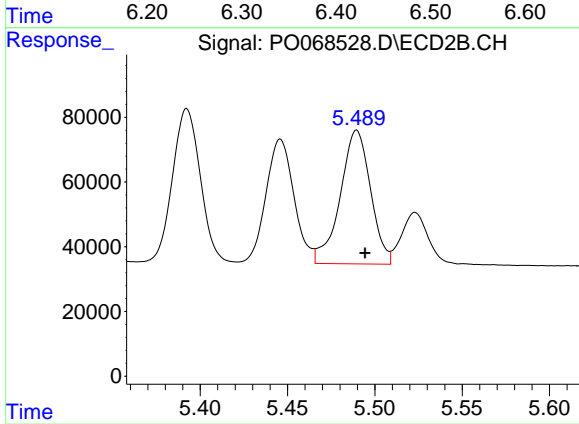
#13 AR-1232-3

R.T.: 5.392 min
 Delta R.T.: -0.005 min
 Response: 526184
 Conc: 1239.02 ng/ml



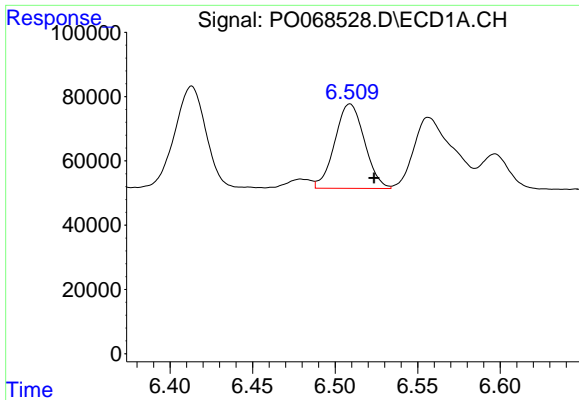
#14 AR-1232-4

R.T.: 6.413 min
 Delta R.T.: -0.014 min
 Response: 416511
 Conc: 1323.30 ng/ml



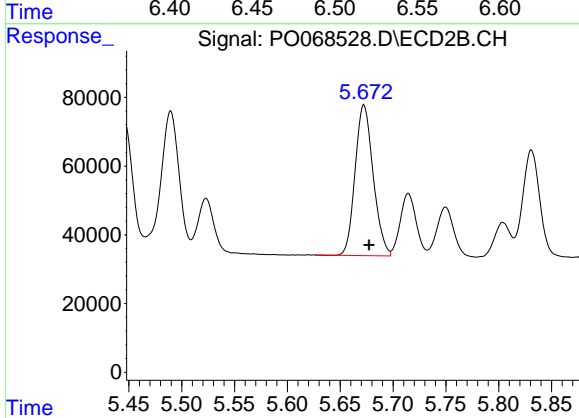
#14 AR-1232-4

R.T.: 5.490 min
 Delta R.T.: -0.005 min
 Response: 500714
 Conc: 1333.64 ng/ml

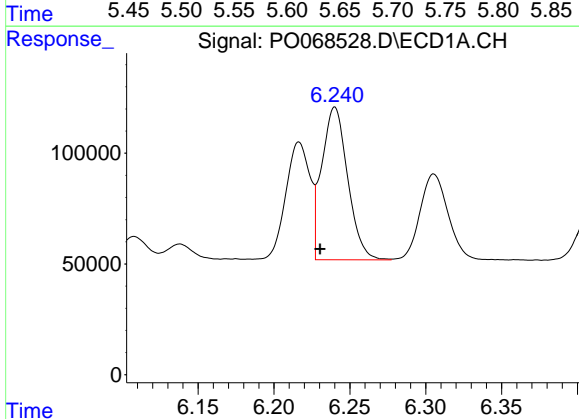


#15 AR-1232-5
 R.T.: 6.509 min
 Delta R.T.: -0.015 min
 Response: 329346
 Conc: 1556.55 ng/ml

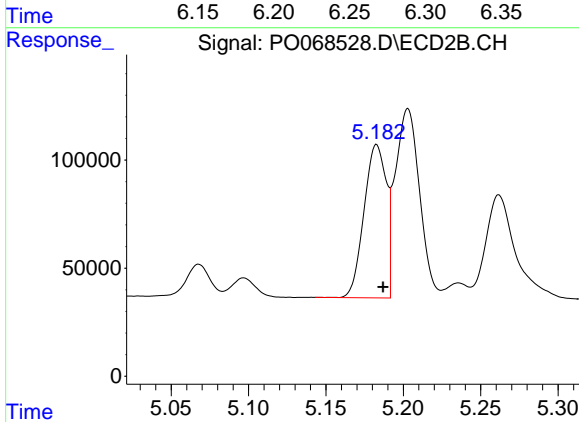
Instrument :
 ECD_O
 ClientSampleId :



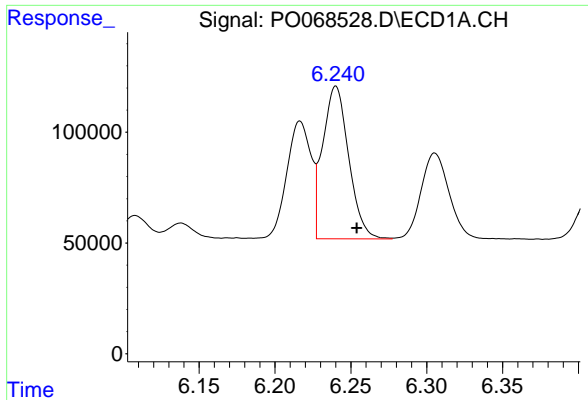
#15 AR-1232-5
 R.T.: 5.672 min
 Delta R.T.: -0.005 min
 Response: 522339
 Conc: 1253.70 ng/ml



#16 AR-1242-1
 R.T.: 6.240 min
 Delta R.T.: 0.010 min
 Response: 822626
 Conc: 934.97 ng/ml



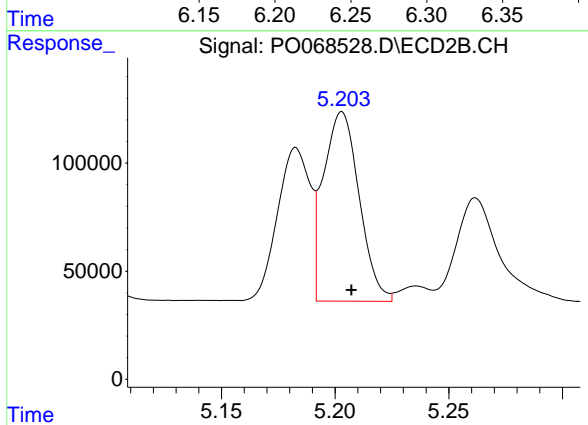
#16 AR-1242-1
 R.T.: 5.183 min
 Delta R.T.: -0.004 min
 Response: 710734
 Conc: 654.47 ng/ml



#17 AR-1242-2

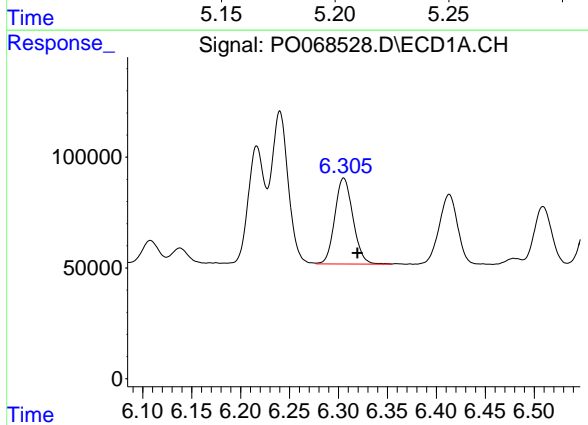
R.T.: 6.240 min
 Delta R.T.: -0.014 min
 Response: 822626
 Conc: 688.08 ng/ml

Instrument :
 ECD_O
 ClientSampled :



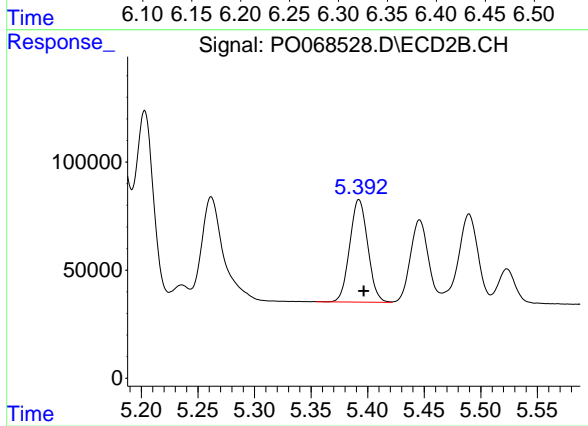
#17 AR-1242-2

R.T.: 5.203 min
 Delta R.T.: -0.004 min
 Response: 959315
 Conc: 676.41 ng/ml



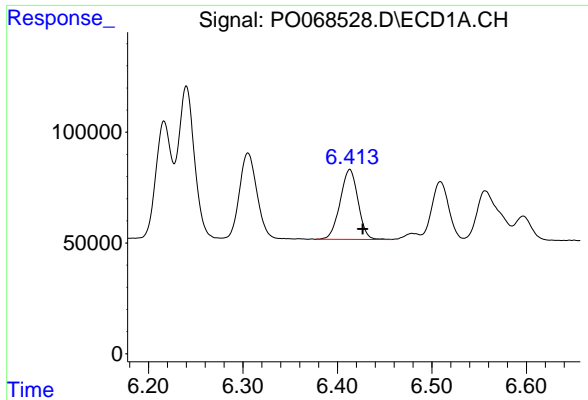
#18 AR-1242-3

R.T.: 6.305 min
 Delta R.T.: -0.014 min
 Response: 501230
 Conc: 670.89 ng/ml



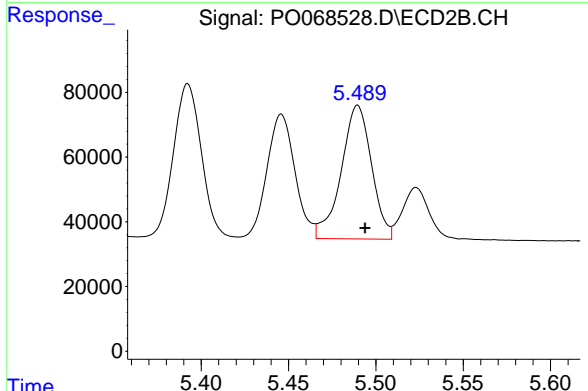
#18 AR-1242-3

R.T.: 5.392 min
 Delta R.T.: -0.004 min
 Response: 526184
 Conc: 660.31 ng/ml

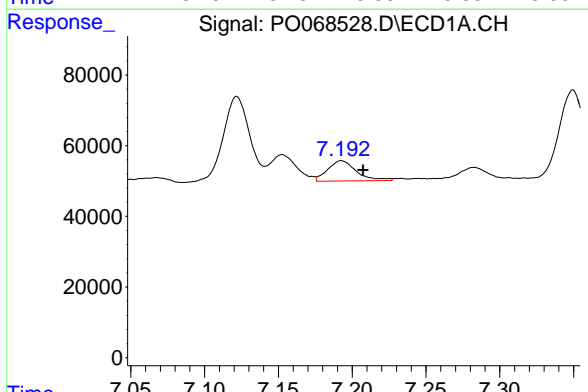


#19 AR-1242-4
 R.T.: 6.413 min
 Delta R.T.: -0.014 min
 Response: 416511
 Conc: 680.15 ng/ml

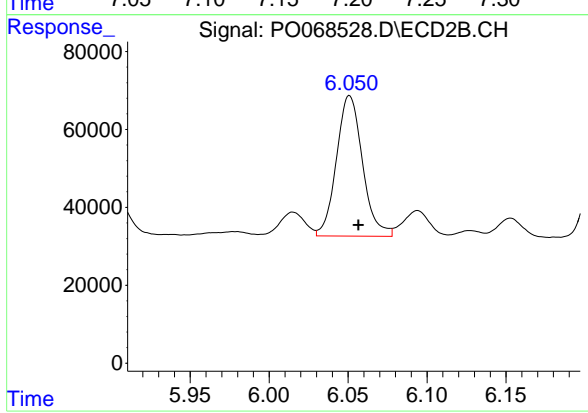
Instrument :
 ECD_O
 ClientSampled :



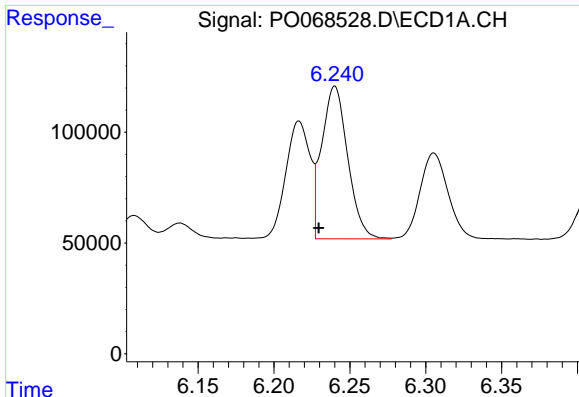
#19 AR-1242-4
 R.T.: 5.490 min
 Delta R.T.: -0.004 min
 Response: 500714
 Conc: 648.07 ng/ml



#20 AR-1242-5
 R.T.: 7.193 min
 Delta R.T.: -0.015 min
 Response: 77846
 Conc: 105.40 ng/ml



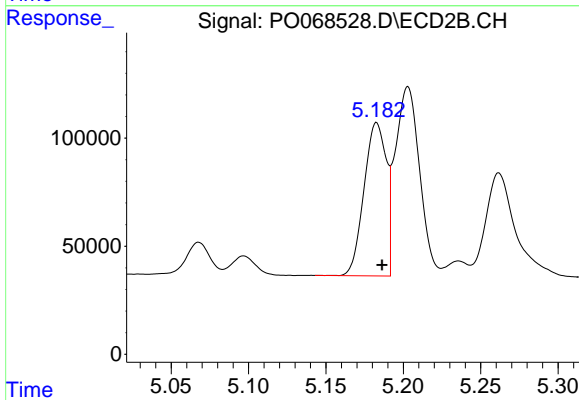
#20 AR-1242-5
 R.T.: 6.051 min
 Delta R.T.: -0.006 min
 Response: 414863
 Conc: 411.36 ng/ml



#21 AR-1248-1

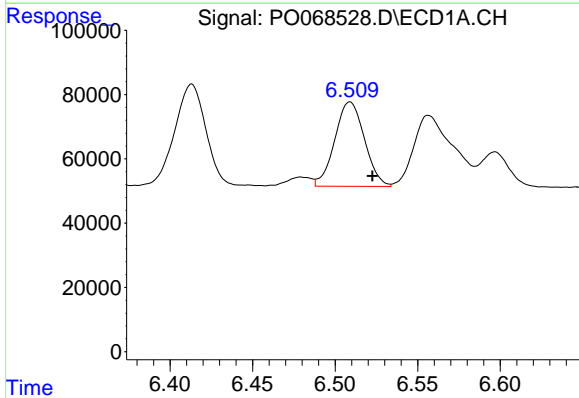
R.T.: 6.240 min
 Delta R.T.: 0.011 min
 Response: 822626
 Conc: 1240.99 ng/ml

Instrument :
 ECD_O
 ClientSampled :



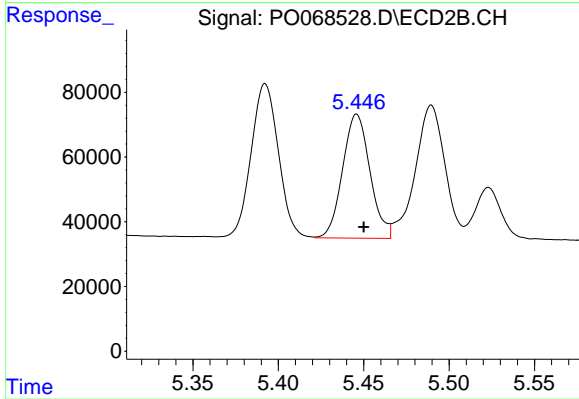
#21 AR-1248-1

R.T.: 5.183 min
 Delta R.T.: -0.004 min
 Response: 710734
 Conc: 875.65 ng/ml



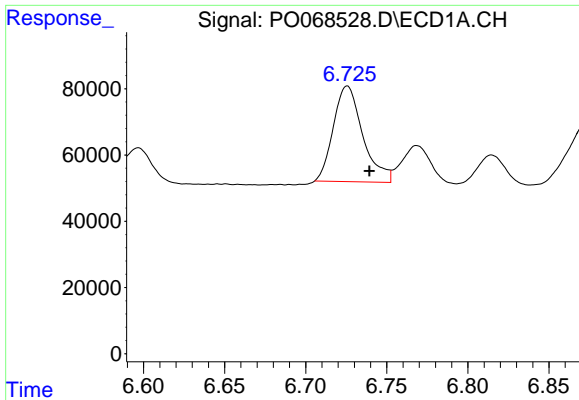
#22 AR-1248-2

R.T.: 6.509 min
 Delta R.T.: -0.013 min
 Response: 329346
 Conc: 395.03 ng/ml



#22 AR-1248-2

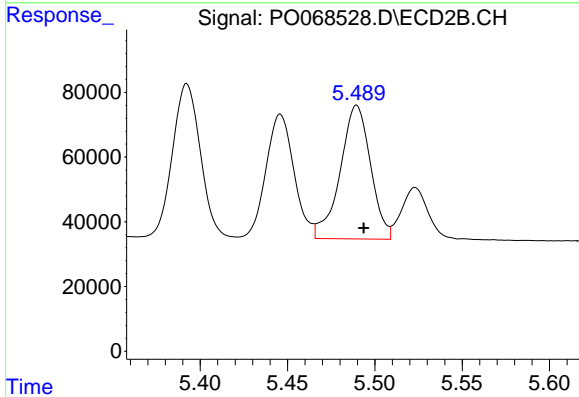
R.T.: 5.446 min
 Delta R.T.: -0.004 min
 Response: 427845
 Conc: 402.79 ng/ml



#23 AR-1248-3

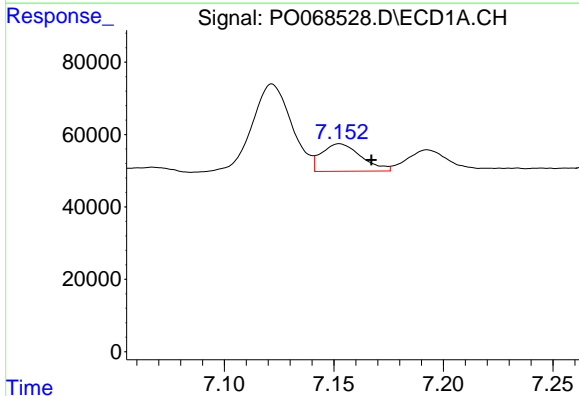
R.T.: 6.726 min
 Delta R.T.: -0.014 min
 Response: 365167
 Conc: 371.24 ng/ml

Instrument :
 ECD_O
 ClientSampleId :



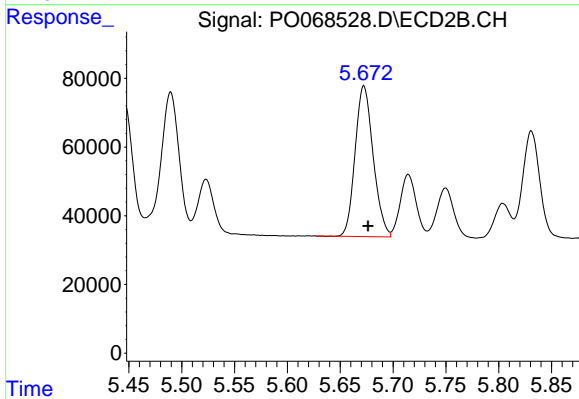
#23 AR-1248-3

R.T.: 5.490 min
 Delta R.T.: -0.004 min
 Response: 500714
 Conc: 468.40 ng/ml



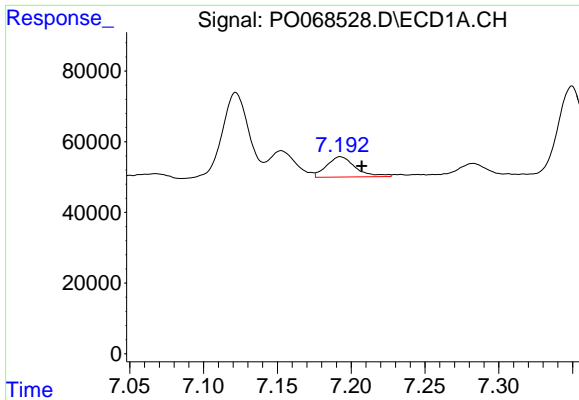
#24 AR-1248-4

R.T.: 7.153 min
 Delta R.T.: -0.014 min
 Response: 95498
 Conc: 80.96 ng/ml



#24 AR-1248-4

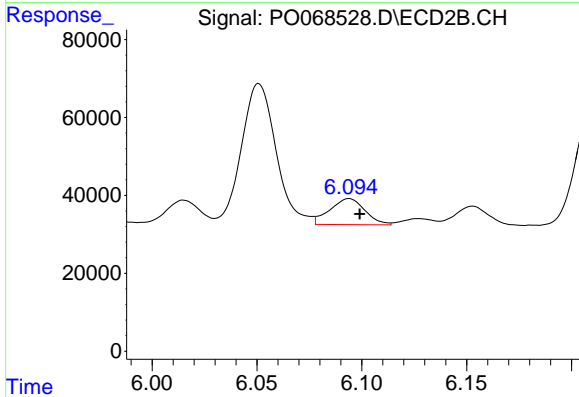
R.T.: 5.672 min
 Delta R.T.: -0.004 min
 Response: 522339
 Conc: 404.78 ng/ml



#25 AR-1248-5

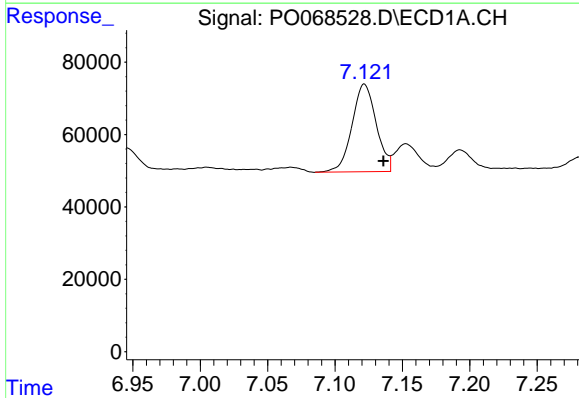
R.T.: 7.193 min
 Delta R.T.: -0.014 min
 Response: 77846
 Conc: 69.89 ng/ml

Instrument :
 ECD_O
 ClientSampleId :



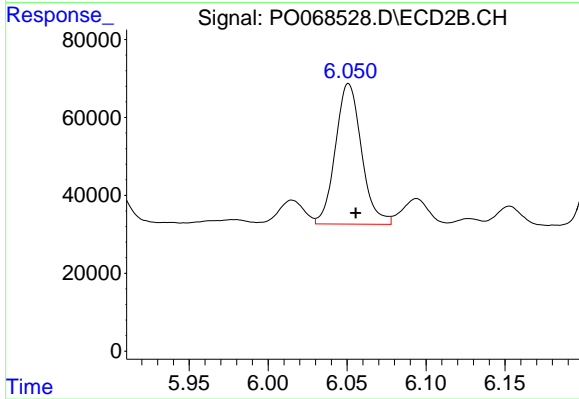
#25 AR-1248-5

R.T.: 6.094 min
 Delta R.T.: -0.005 min
 Response: 77780
 Conc: 59.79 ng/ml



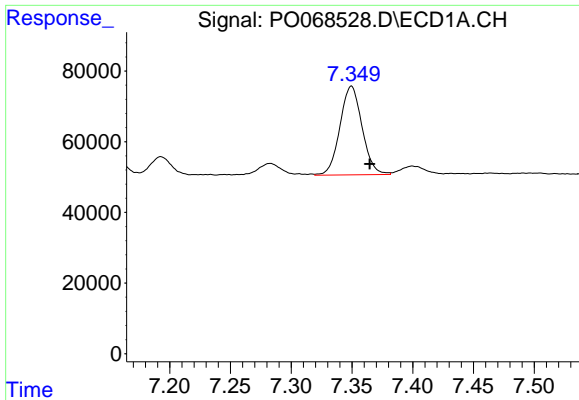
#26 AR-1254-1

R.T.: 7.122 min
 Delta R.T.: -0.014 min
 Response: 302545
 Conc: 254.40 ng/ml



#26 AR-1254-1

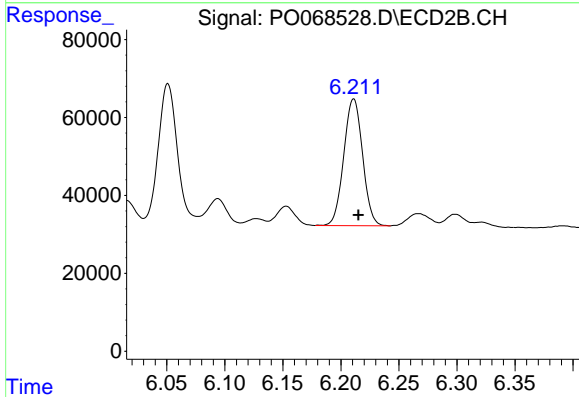
R.T.: 6.051 min
 Delta R.T.: -0.005 min
 Response: 414863
 Conc: 204.73 ng/ml



#27 AR-1254-2

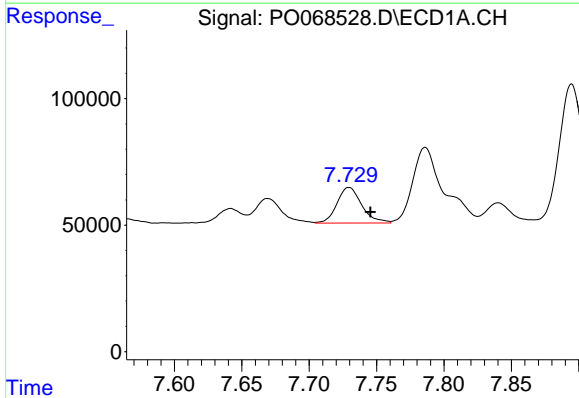
R.T.: 7.350 min
 Delta R.T.: -0.015 min
 Response: 318240
 Conc: 172.39 ng/ml

Instrument :
 ECD_O
 ClientSampleId :



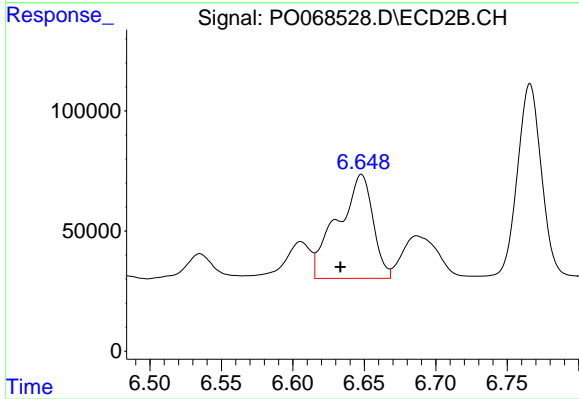
#27 AR-1254-2

R.T.: 6.211 min
 Delta R.T.: -0.004 min
 Response: 367557
 Conc: 205.12 ng/ml



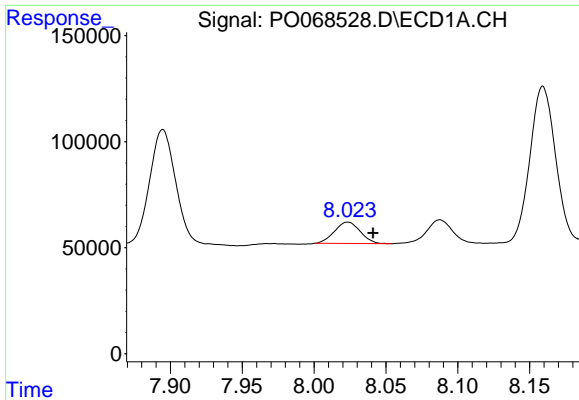
#28 AR-1254-3

R.T.: 7.730 min
 Delta R.T.: -0.016 min
 Response: 180739
 Conc: 93.36 ng/ml



#28 AR-1254-3

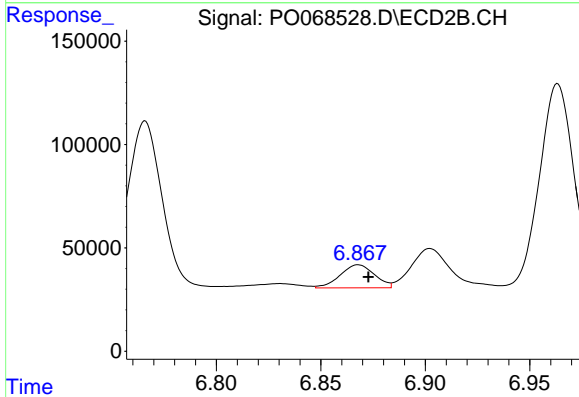
R.T.: 6.648 min
 Delta R.T.: 0.015 min
 Response: 745434
 Conc: 259.07 ng/ml



#29 AR-1254-4

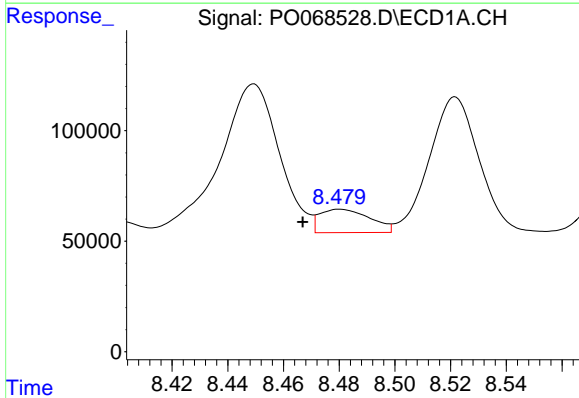
R.T.: 8.024 min
 Delta R.T.: -0.018 min
 Response: 125994
 Conc: 78.72 ng/ml

Instrument :
 ECD_O
 ClientSampled :



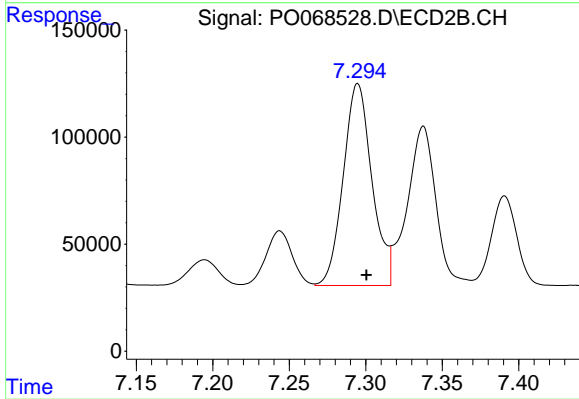
#29 AR-1254-4

R.T.: 6.868 min
 Delta R.T.: -0.005 min
 Response: 127776
 Conc: 66.23 ng/ml



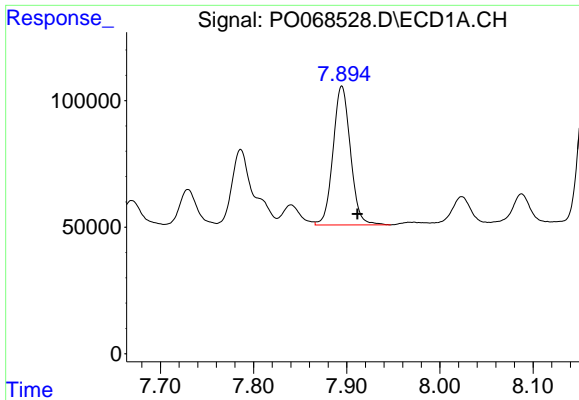
#30 AR-1254-5

R.T.: 8.480 min
 Delta R.T.: 0.013 min
 Response: 131923
 Conc: 80.30 ng/ml



#30 AR-1254-5

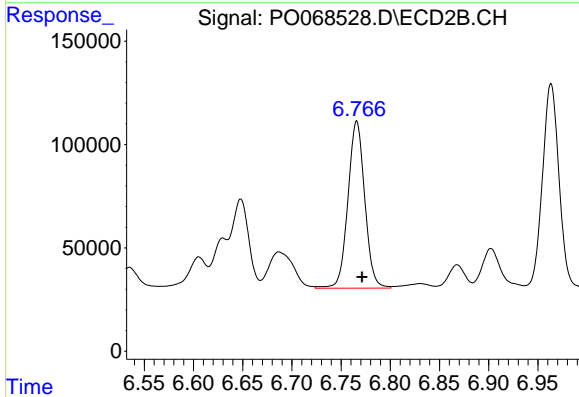
R.T.: 7.295 min
 Delta R.T.: -0.006 min
 Response: 1230770
 Conc: 456.38 ng/ml



#31 AR-1260-1

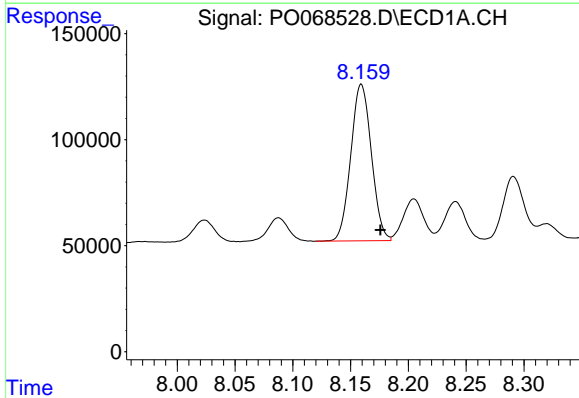
R.T.: 7.895 min
 Delta R.T.: -0.017 min
 Response: 711563
 Conc: 510.73 ng/ml

Instrument :
 ECD_O
 ClientSampled :



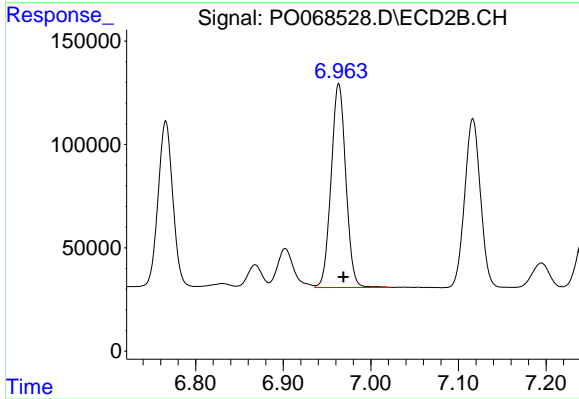
#31 AR-1260-1

R.T.: 6.766 min
 Delta R.T.: -0.005 min
 Response: 960387
 Conc: 500.39 ng/ml



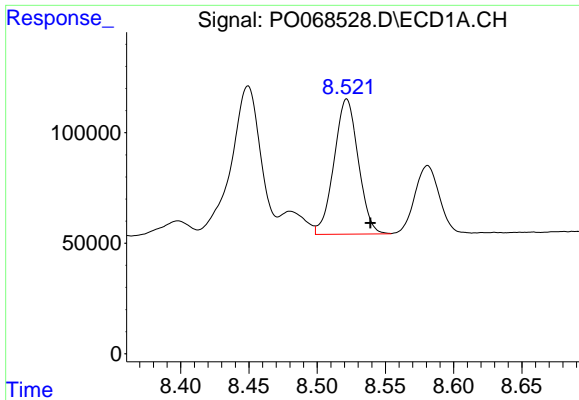
#32 AR-1260-2

R.T.: 8.159 min
 Delta R.T.: -0.017 min
 Response: 915977
 Conc: 516.26 ng/ml



#32 AR-1260-2

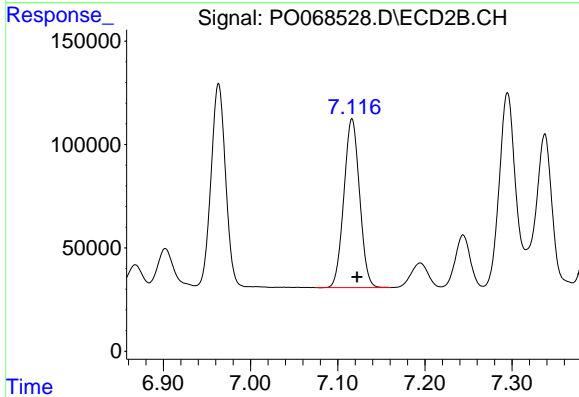
R.T.: 6.963 min
 Delta R.T.: -0.005 min
 Response: 1150015
 Conc: 490.18 ng/ml



#33 AR-1260-3

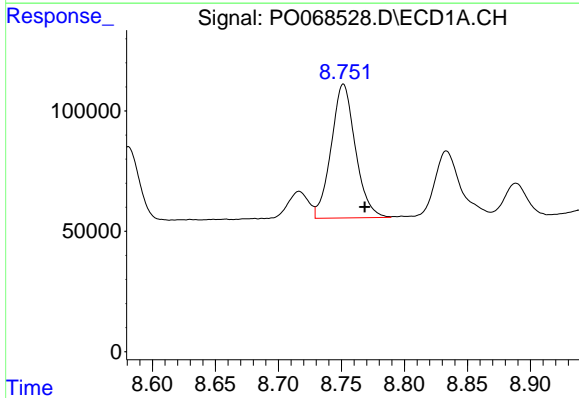
R.T.: 8.522 min
 Delta R.T.: -0.017 min
 Response: 755948
 Conc: 520.36 ng/ml

Instrument :
 ECD_O
 ClientSampled :



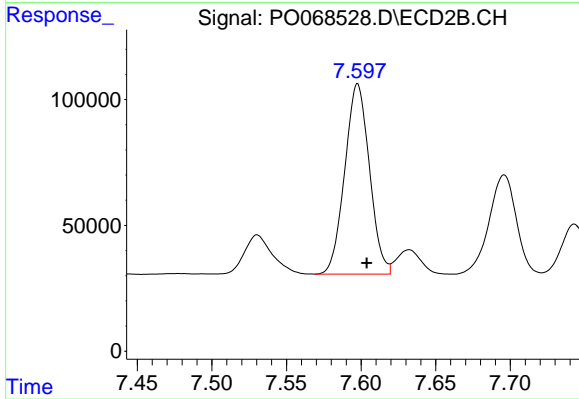
#33 AR-1260-3

R.T.: 7.116 min
 Delta R.T.: -0.006 min
 Response: 1020728
 Conc: 468.39 ng/ml



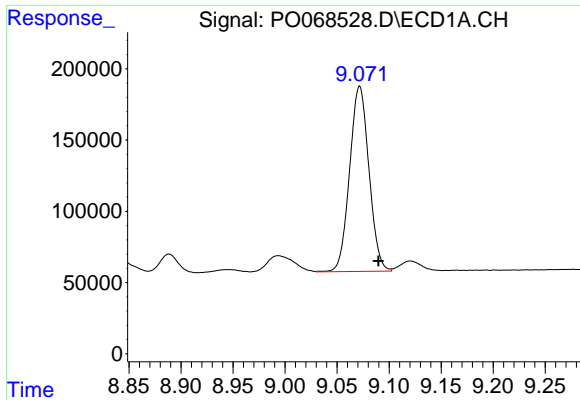
#34 AR-1260-4

R.T.: 8.752 min
 Delta R.T.: -0.017 min
 Response: 744001
 Conc: 477.79 ng/ml



#34 AR-1260-4

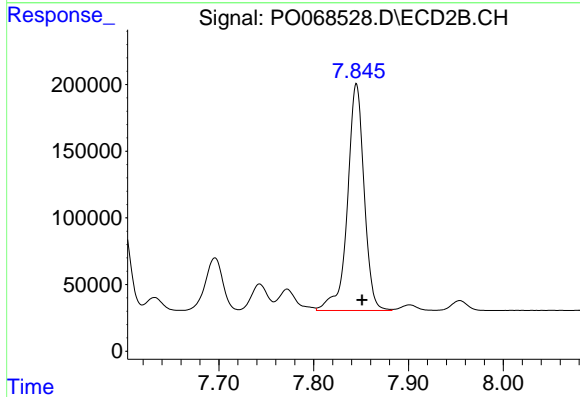
R.T.: 7.598 min
 Delta R.T.: -0.006 min
 Response: 869583
 Conc: 457.12 ng/ml



#35 AR-1260-5

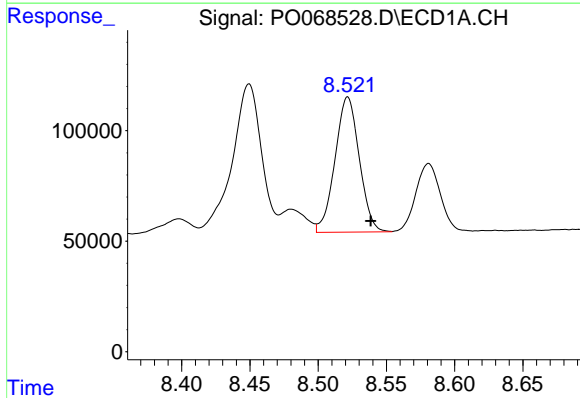
R.T.: 9.072 min
 Delta R.T.: -0.018 min
 Response: 1680778
 Conc: 505.99 ng/ml

Instrument :
 ECD_O
 ClientSampled :



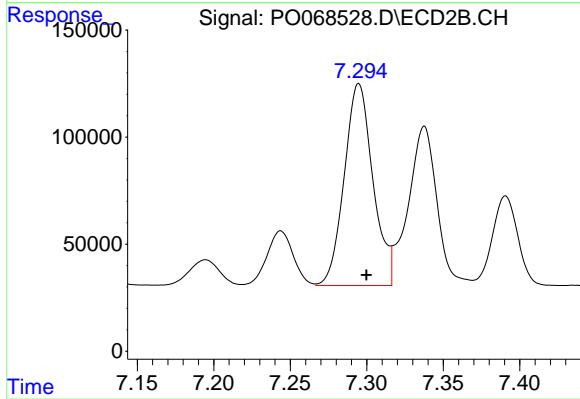
#35 AR-1260-5

R.T.: 7.845 min
 Delta R.T.: -0.006 min
 Response: 2075180
 Conc: 466.94 ng/ml



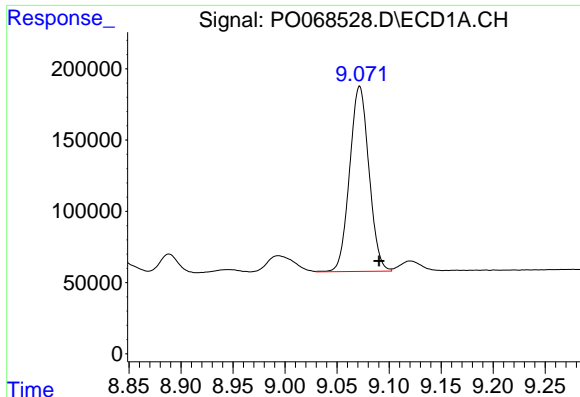
#36 AR-1262-1

R.T.: 8.522 min
 Delta R.T.: -0.017 min
 Response: 755948
 Conc: 377.86 ng/ml



#36 AR-1262-1

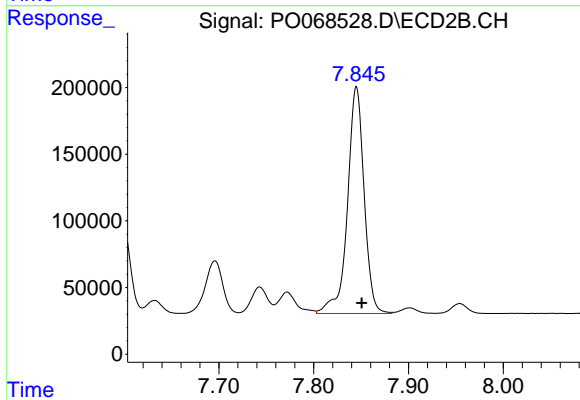
R.T.: 7.295 min
 Delta R.T.: -0.005 min
 Response: 1230770
 Conc: 865.21 ng/ml



#37 AR-1262-2

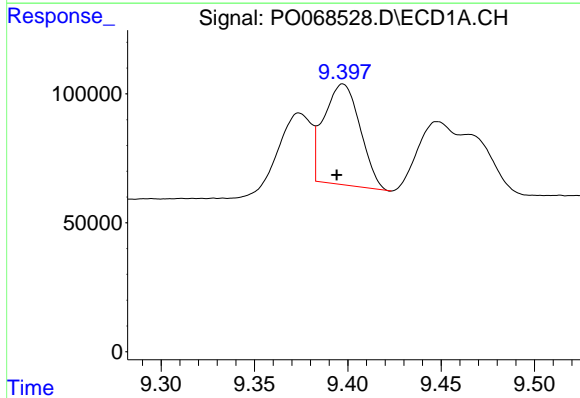
R.T.: 9.072 min
 Delta R.T.: -0.019 min
 Response: 1680778
 Conc: 466.26 ng/ml

Instrument :
 ECD_O
 ClientSampled :



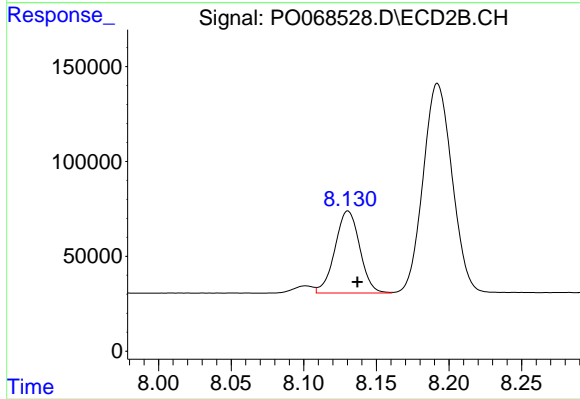
#37 AR-1262-2

R.T.: 7.845 min
 Delta R.T.: -0.006 min
 Response: 2075180
 Conc: 446.52 ng/ml



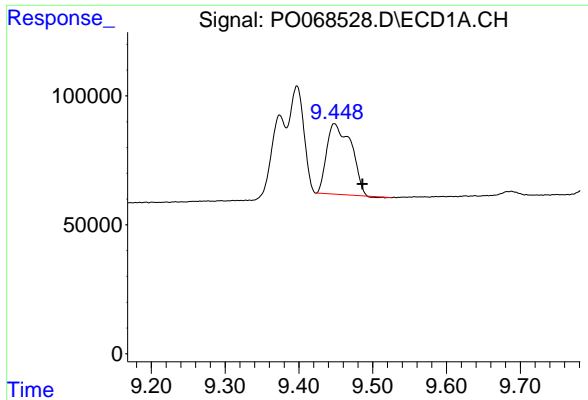
#38 AR-1262-3

R.T.: 9.397 min
 Delta R.T.: 0.003 min
 Response: 526306
 Conc: 202.77 ng/ml



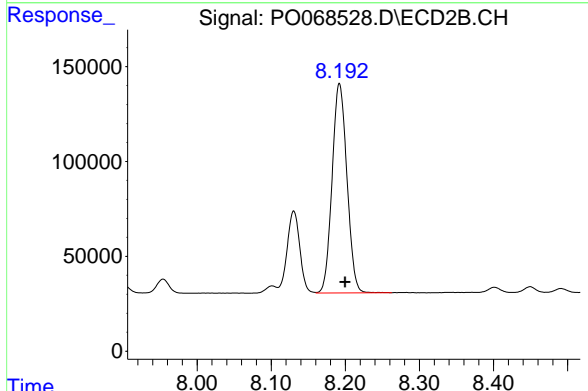
#38 AR-1262-3

R.T.: 8.130 min
 Delta R.T.: -0.007 min
 Response: 513838
 Conc: 266.12 ng/ml

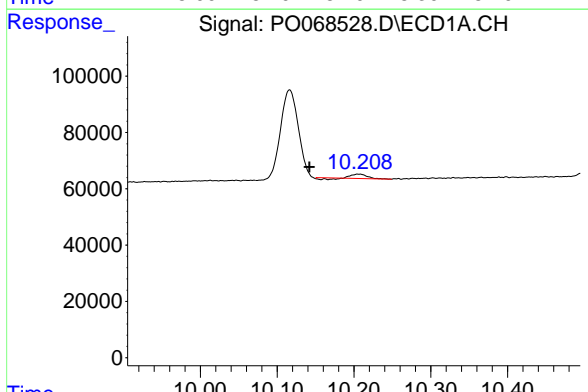


#39 AR-1262-4
 R.T.: 9.448 min
 Delta R.T.: -0.038 min
 Response: 630633
 Conc: 305.23 ng/ml

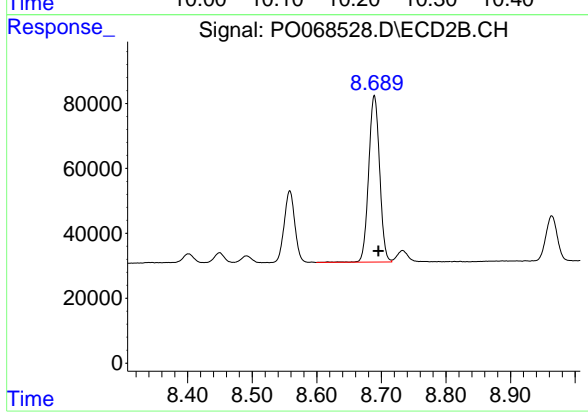
Instrument :
 ECD_O
 ClientSampled :



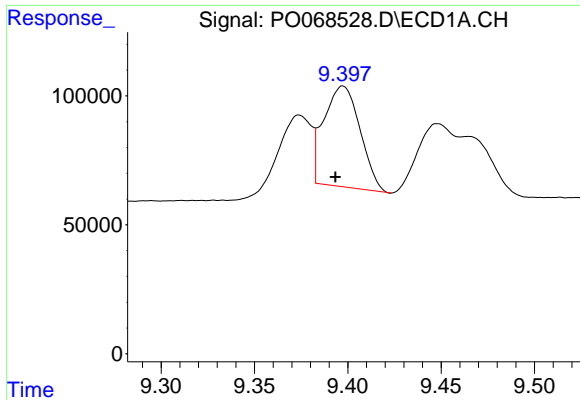
#39 AR-1262-4
 R.T.: 8.192 min
 Delta R.T.: -0.008 min
 Response: 1533715
 Conc: 436.65 ng/ml



#40 AR-1262-5
 R.T.: 10.206 min
 Delta R.T.: 0.064 min
 Response: 19067
 Conc: 12.48 ng/ml



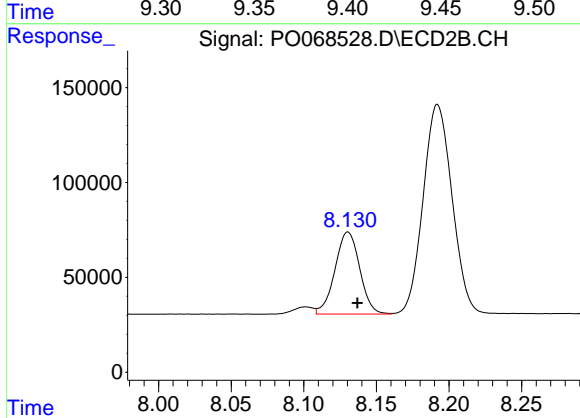
#40 AR-1262-5
 R.T.: 8.689 min
 Delta R.T.: -0.006 min
 Response: 604665
 Conc: 350.51 ng/ml



#41 AR-1268-1

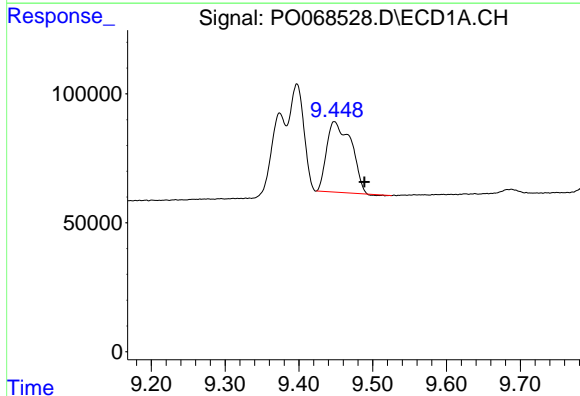
R.T.: 9.397 min
 Delta R.T.: 0.004 min
 Response: 526306
 Conc: 110.54 ng/ml

Instrument :
 ECD_O
 ClientSampleId :



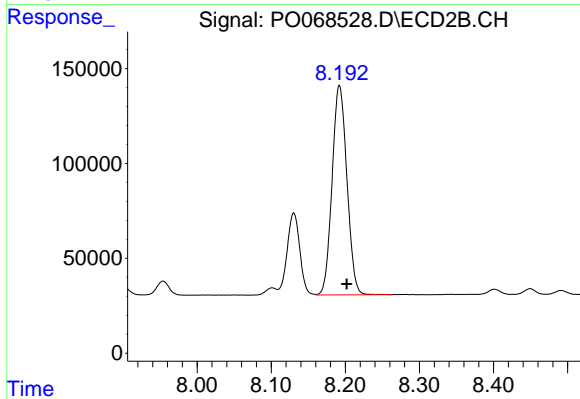
#41 AR-1268-1

R.T.: 8.130 min
 Delta R.T.: -0.007 min
 Response: 513838
 Conc: 91.31 ng/ml



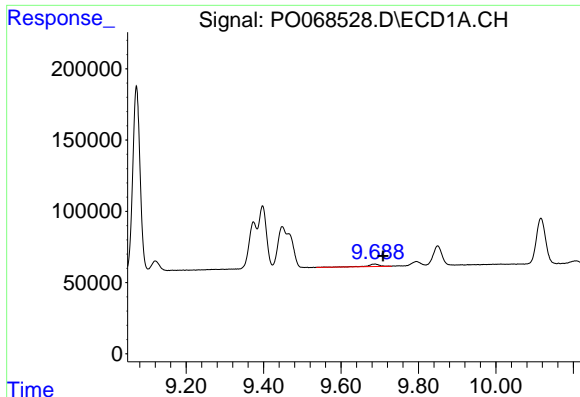
#42 AR-1268-2

R.T.: 9.448 min
 Delta R.T.: -0.040 min
 Response: 630633
 Conc: 137.86 ng/ml



#42 AR-1268-2

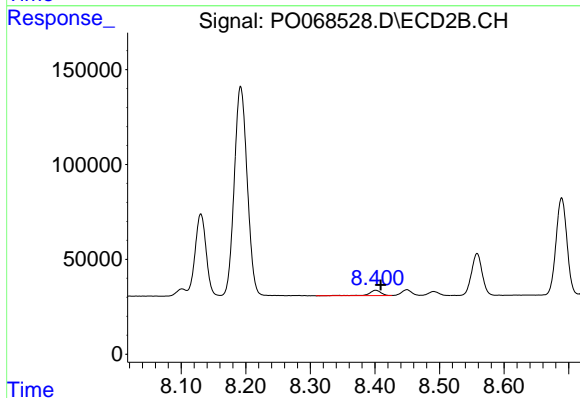
R.T.: 8.192 min
 Delta R.T.: -0.010 min
 Response: 1533715
 Conc: 299.80 ng/ml



#43 AR-1268-3

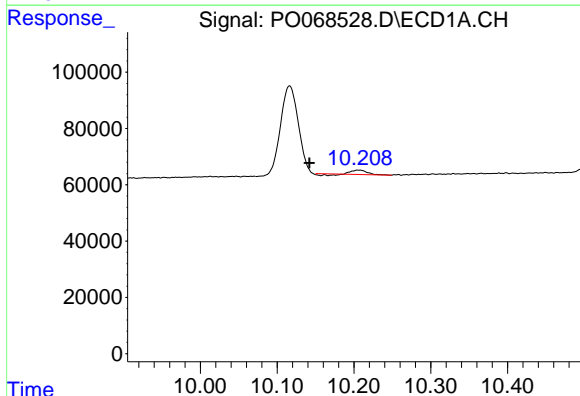
R.T.: 9.687 min
 Delta R.T.: -0.022 min
 Response: 34006
 Conc: 8.60 ng/ml

Instrument :
 ECD_O
 ClientSampled :



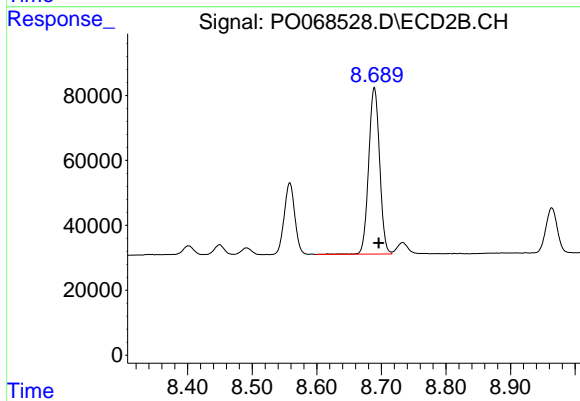
#43 AR-1268-3

R.T.: 8.401 min
 Delta R.T.: -0.008 min
 Response: 37204
 Conc: 8.78 ng/ml



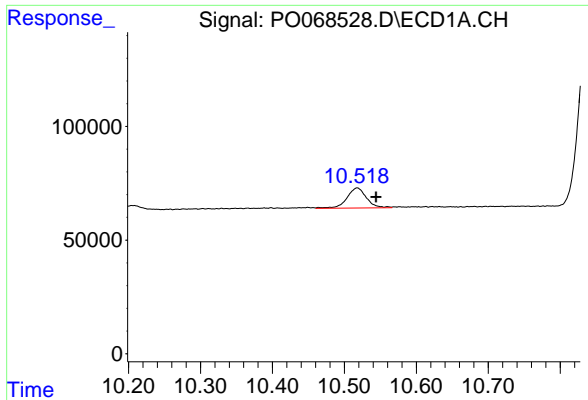
#44 AR-1268-4

R.T.: 10.206 min
 Delta R.T.: 0.064 min
 Response: 19067
 Conc: 10.68 ng/ml



#44 AR-1268-4

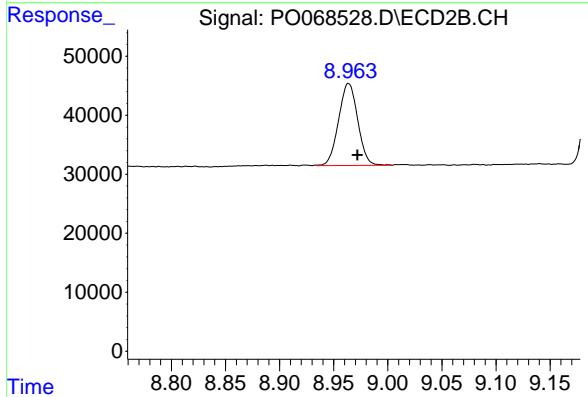
R.T.: 8.689 min
 Delta R.T.: -0.007 min
 Response: 604665
 Conc: 298.78 ng/ml



#45 AR-1268-5

R.T.: 10.518 min
Delta R.T.: -0.026 min
Response: 166537
Conc: 12.83 ng/ml

Instrument :
ECD_O
ClientSampled :



#45 AR-1268-5

R.T.: 8.964 min
Delta R.T.: -0.008 min
Response: 171115
Conc: 12.99 ng/ml