

Data Path : P:\HPCHEM1\ECD_O\Data\PO052218\
 Data File : PO044935.D
 Signal(s) : Signal #1: ECD1A.CH Signal #2: ECD2B.CH
 Acq On : 22 May 2018 21:13
 Operator : SM/UA
 Sample : J3008-14
 Misc :
 ALS Vial : 20 Sample Multiplier: 1

Instrument :
 ECD_O
 ClientSampleId :
 051618-SIDI-F-U-S

Integration File signal 1: autoint1.e
 Integration File signal 2: autoint2.e
 Quant Time: May 23 01:47:14 2018
 Quant Method : P:\HPCHEM1\ECD_O\methods\PO051518.M
 Quant Title : GC EXTRACTABLES
 QLast Update : Tue May 15 15:44:07 2018
 Response via : Initial Calibration
 Integrator: ChemStation 6890 Scale Mode: Small noise peaks clipped

Volume Inj. : 2 µl
 Signal #1 Phase : ZB-MR1 Signal #2 Phase: ZB-MR2
 Signal #1 Info : 30Mx0.32mmx 0.50µ Signal #2 Info : 30M x 0.32mm x 0.25µm

Compound	RT#1	RT#2	Resp#1	Resp#2	ng/ml	ng/ml

System Monitoring Compounds						
1) SA Tetrachlo...	4.018	3.288	3716630	5252953	24.254	21.913
2) SA Decachlor...	9.319	8.021	1842061	265048	8.959	0.942 #
Target Compounds						
3) L1 AR-1016-1	4.943	0.000	217226	0	55.651	N.D. #
4) L1 AR-1016-2	0.000	4.532	0	222186	N.D.	41.225 #
5) L1 AR-1016-3	0.000	4.532	0	222186	N.D.	34.812 #
8) L2 AR-1221-1	4.289	0.000	499023	0	163.505	N.D. #
9) L2 AR-1221-2	4.289	0.000	499023	0	224.402	N.D. #
10) L2 AR-1221-3	4.391	3.665	718477	540758	97.734	49.697 #
11) L3 AR-1232-1	4.391	3.665	718477	540758	217.977	112.392 #
14) L3 AR-1232-4	0.000	4.532	0	222186	N.D.	38.962 #
15) L3 AR-1232-5	0.000	4.532	0	222186	N.D.	78.249 #
18) L4 AR-1242-3	0.000	4.532	0	222186	N.D.	35.678 #
19) L4 AR-1242-4	0.000	4.532	0	222186	N.D.	37.593 #
30) L6 AR-1254-5	0.000	6.101	0	410775	N.D.	37.402 #
32) L7 AR-1260-2	7.010	5.901	205101	224588	16.180	10.347 #
36) L8 AR-1262-1	0.000	5.901	0	224588	N.D.	12.516 #
37) L8 AR-1262-2	7.010	6.101	205101	410775	19.471	24.385 #

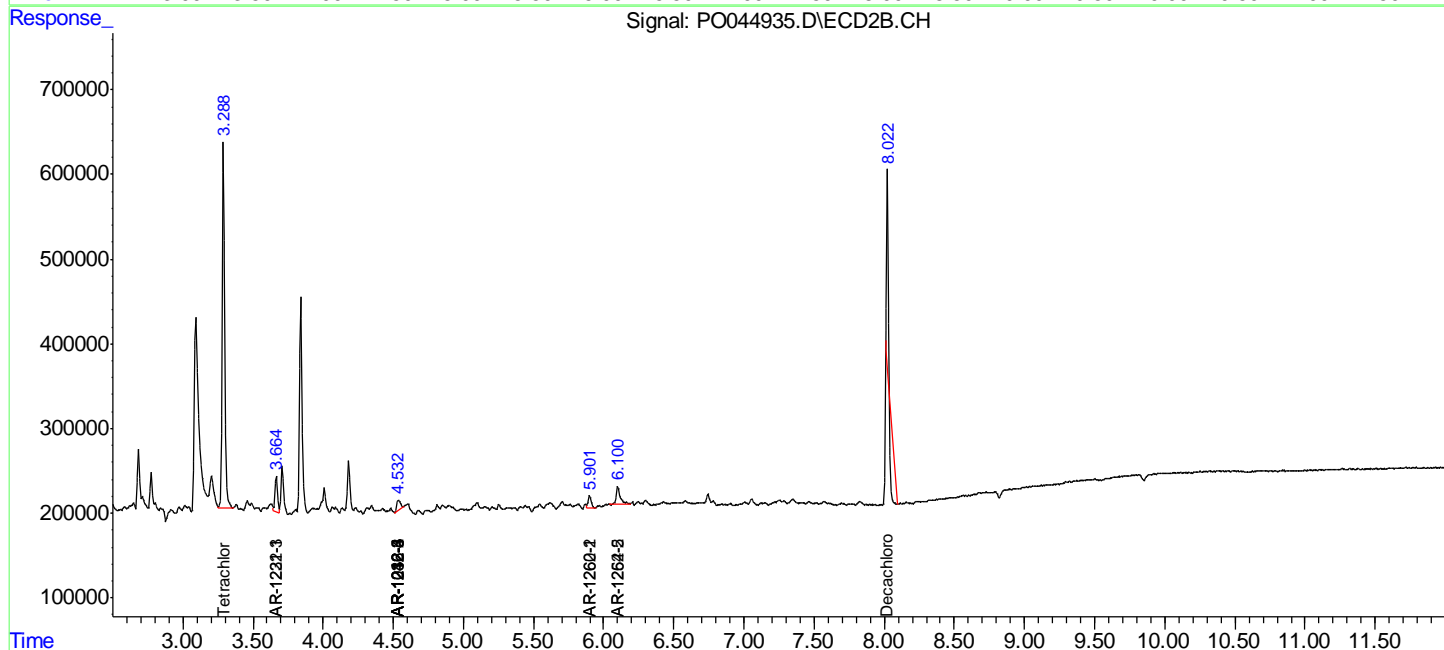
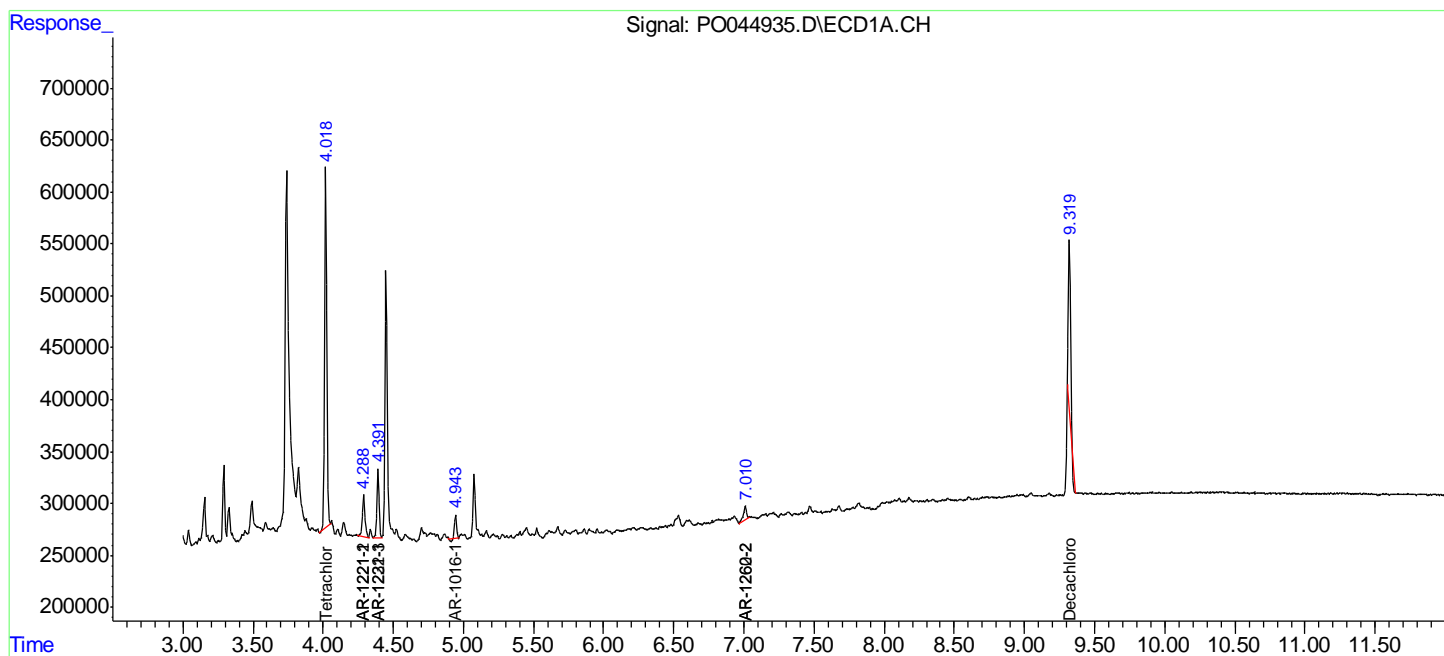
(f)=RT Delta > 1/2 Window (#)=Amounts differ by > 25% (m)=manual int.

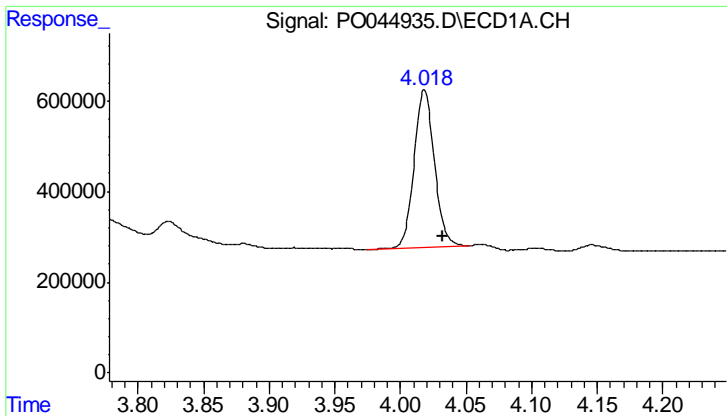
Data Path : P:\HPCHEM1\ECD_O\Data\PO052218\
 Data File : PO044935.D
 Signal(s) : Signal #1: ECD1A.CH Signal #2: ECD2B.CH
 Acq On : 22 May 2018 21:13
 Operator : SM/UA
 Sample : J3008-14
 Misc :
 ALS Vial : 20 Sample Multiplier: 1

Instrument :
 ECD_O
 ClientSampled :
 051618-SIDI-F-U-S

Integration File signal 1: autoint1.e
 Integration File signal 2: autoint2.e
 Quant Time: May 23 01:47:14 2018
 Quant Method : P:\HPCHEM1\ECD_O\methods\PO051518.M
 Quant Title : GC EXTRACTABLES
 QLast Update : Tue May 15 15:44:07 2018
 Response via : Initial Calibration
 Integrator: ChemStation 6890 Scale Mode: Small noise peaks clipped

Volume Inj. : 2 µl
 Signal #1 Phase : ZB-MR1 Signal #2 Phase: ZB-MR2
 Signal #1 Info : 30Mx0.32mmx 0.50µ Signal #2 Info : 30M x 0.32mm x 0.25µm

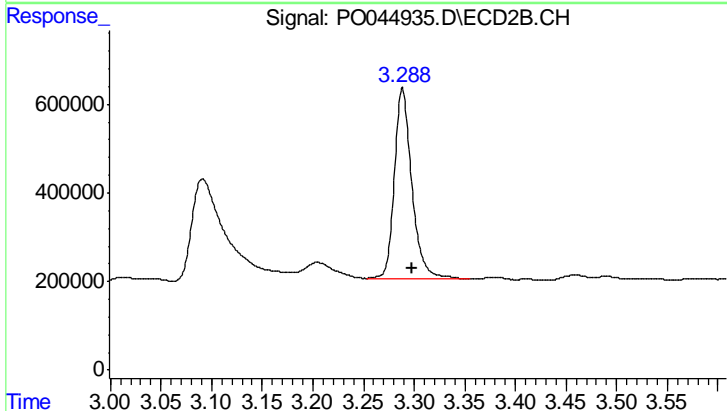




#1 Tetrachloro-m-xylene

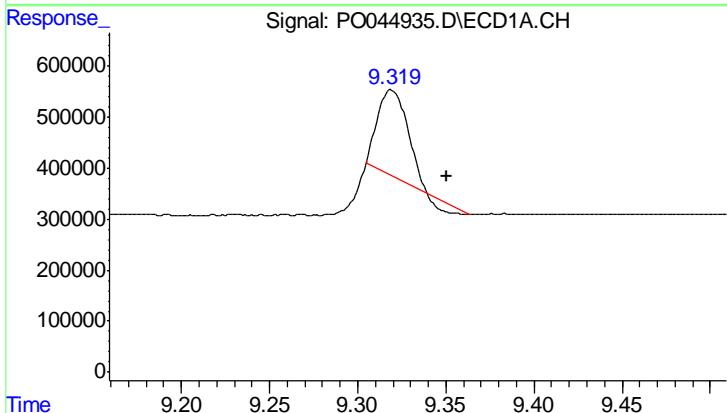
R.T.: 4.018 min
 Delta R.T.: -0.014 min
 Response: 3716630
 Conc: 24.25 ng/ml

Instrument :
 ECD_O
 ClientSampleId :
 051618-SIDI-F-U-S



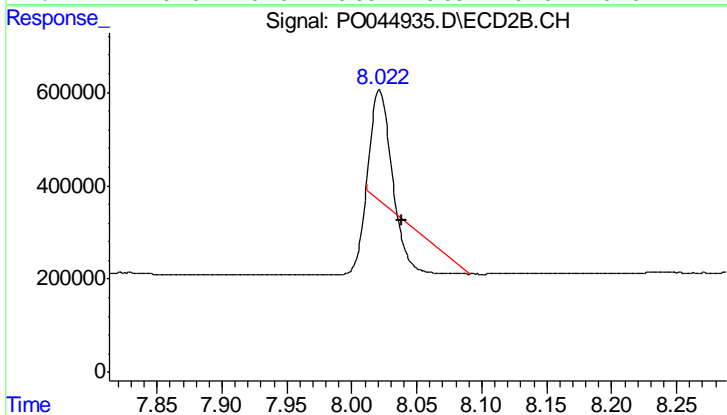
#1 Tetrachloro-m-xylene

R.T.: 3.288 min
 Delta R.T.: -0.009 min
 Response: 5252953
 Conc: 21.91 ng/ml



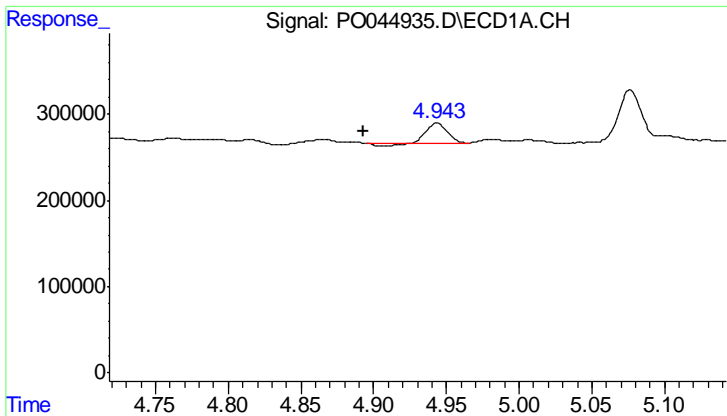
#2 Decachlorobiphenyl

R.T.: 9.319 min
 Delta R.T.: -0.032 min
 Response: 1842061
 Conc: 8.96 ng/ml



#2 Decachlorobiphenyl

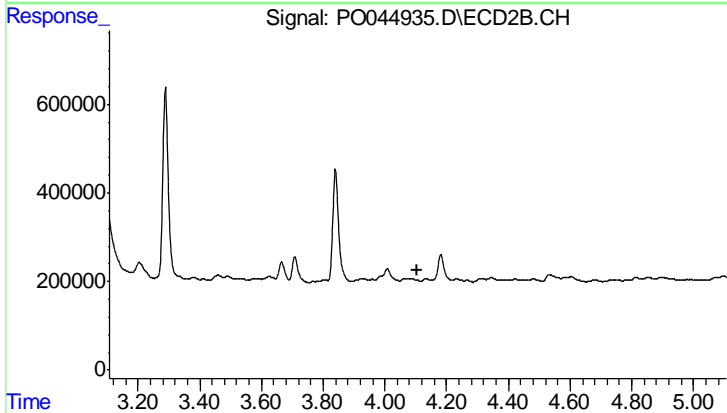
R.T.: 8.021 min
 Delta R.T.: -0.017 min
 Response: 265048
 Conc: 0.94 ng/ml



#3 AR-1016-1

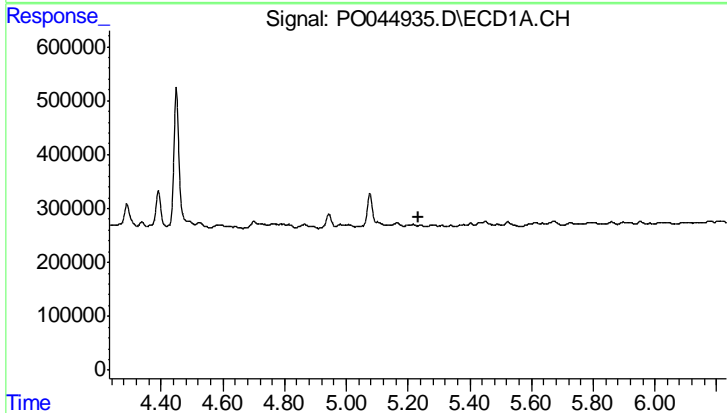
R.T.: 4.943 min
 Delta R.T.: 0.050 min
 Response: 217226
 Conc: 55.65 ng/ml

Instrument :
 ECD_O
 ClientSampled :
 051618-SIDI-F-U-S



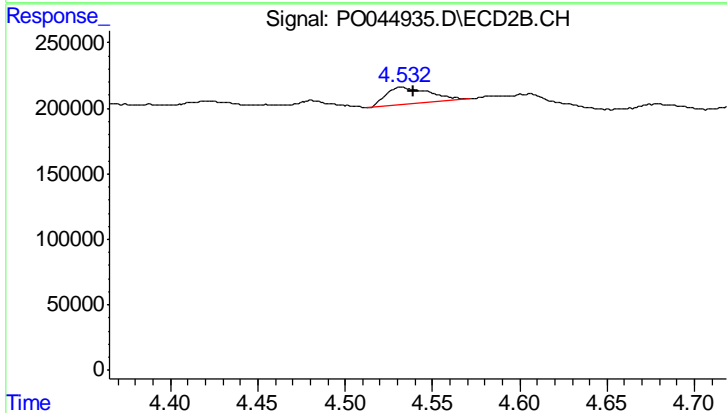
#3 AR-1016-1

R.T.: 0.000 min
 Exp R.T. : 4.107 min
 Response: 0
 Conc: N.D.



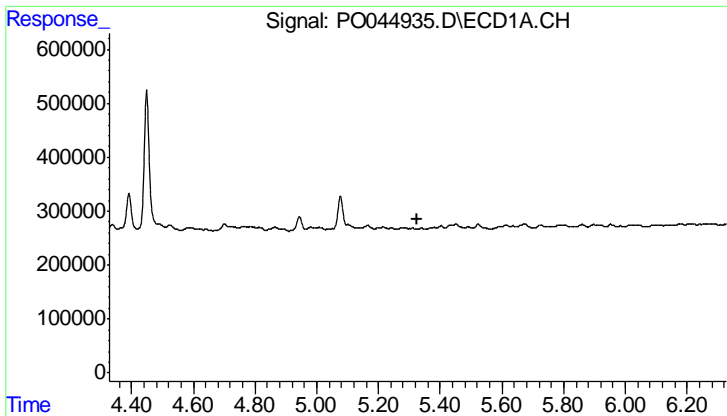
#4 AR-1016-2

R.T.: 0.000 min
 Exp R.T. : 5.232 min
 Response: 0
 Conc: N.D.



#4 AR-1016-2

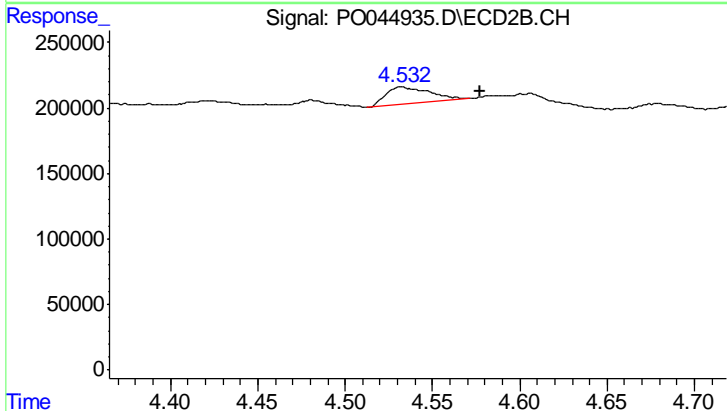
R.T.: 4.532 min
 Delta R.T.: -0.007 min
 Response: 222186
 Conc: 41.22 ng/ml



#5 AR-1016-3

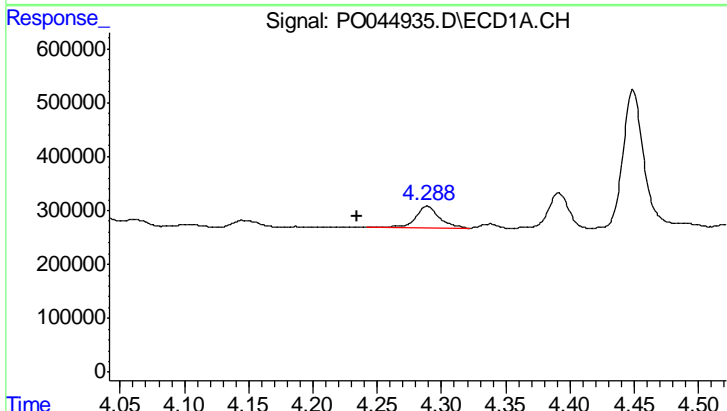
R.T.: 0.000 min
 Exp R.T.: 5.328 min
 Response: 0
 Conc: N.D.

Instrument :
 ECD_O
 ClientSampled :
 051618-SIDI-F-U-S



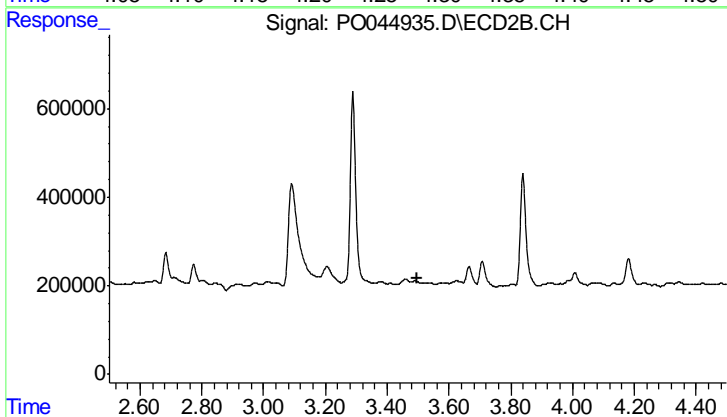
#5 AR-1016-3

R.T.: 4.532 min
 Delta R.T.: -0.045 min
 Response: 222186
 Conc: 34.81 ng/ml



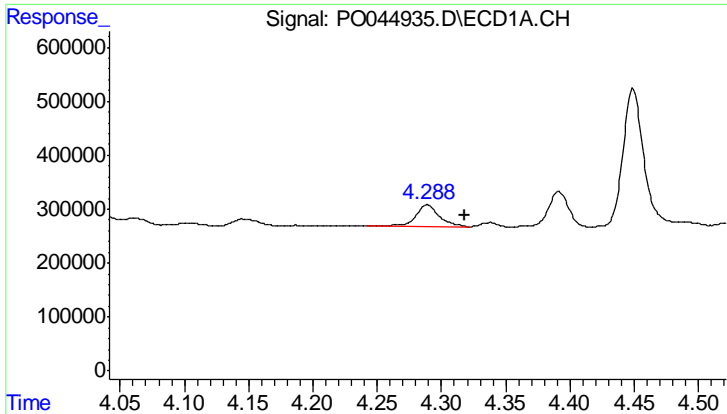
#8 AR-1221-1

R.T.: 4.289 min
 Delta R.T.: 0.054 min
 Response: 499023
 Conc: 163.51 ng/ml



#8 AR-1221-1

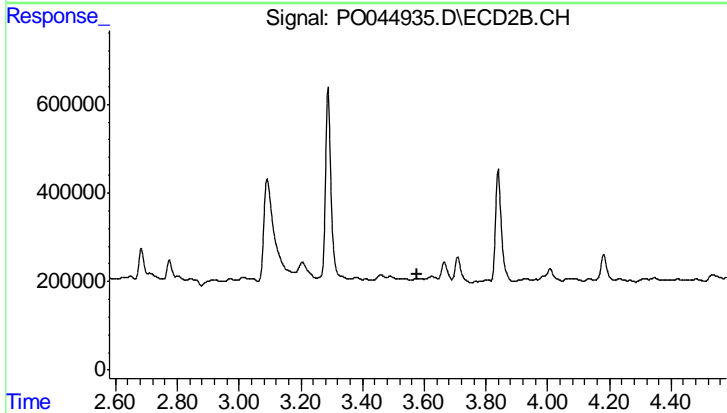
R.T.: 0.000 min
 Exp R.T.: 3.499 min
 Response: 0
 Conc: N.D.



#9 AR-1221-2

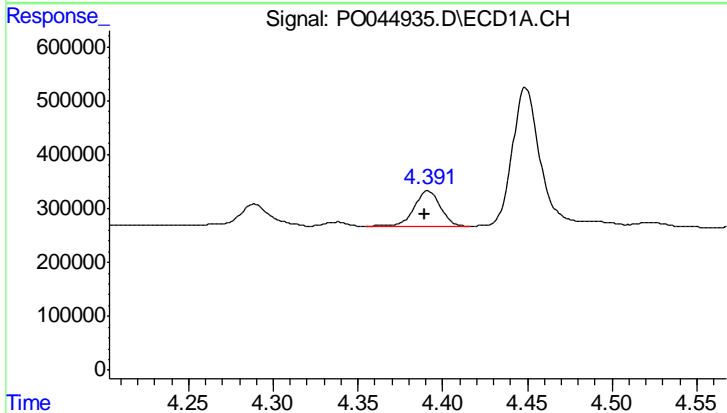
R.T.: 4.289 min
 Delta R.T.: -0.029 min
 Response: 499023
 Conc: 224.40 ng/ml

Instrument :
 ECD_O
 ClientSampled :
 051618-SIDI-F-U-S



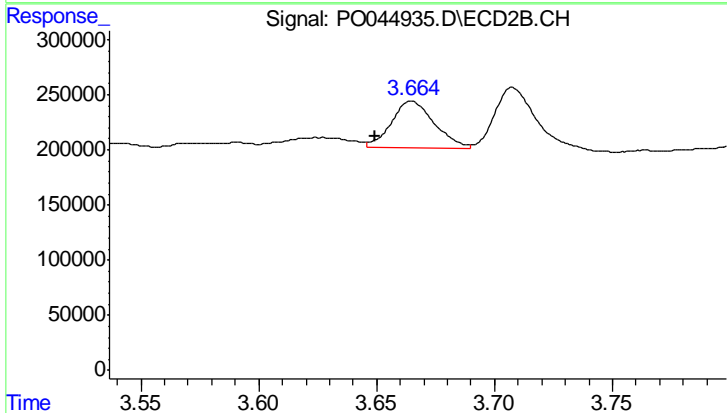
#9 AR-1221-2

R.T.: 0.000 min
 Exp R.T.: 3.579 min
 Response: 0
 Conc: N.D.



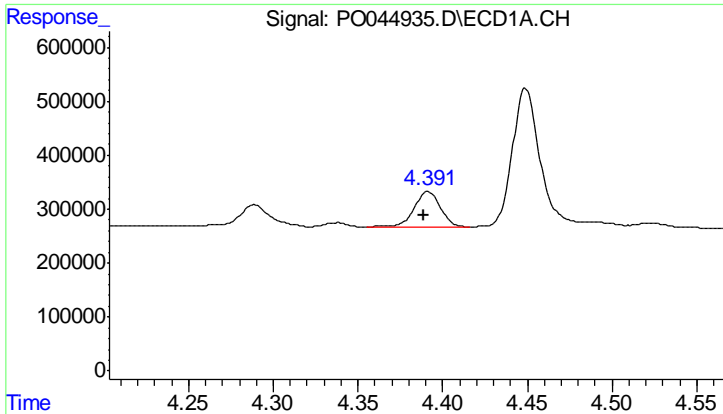
#10 AR-1221-3

R.T.: 4.391 min
 Delta R.T.: 0.002 min
 Response: 718477
 Conc: 97.73 ng/ml



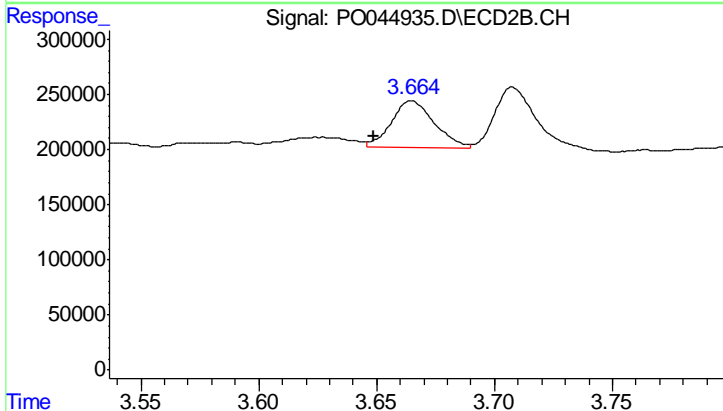
#10 AR-1221-3

R.T.: 3.665 min
 Delta R.T.: 0.015 min
 Response: 540758
 Conc: 49.70 ng/ml

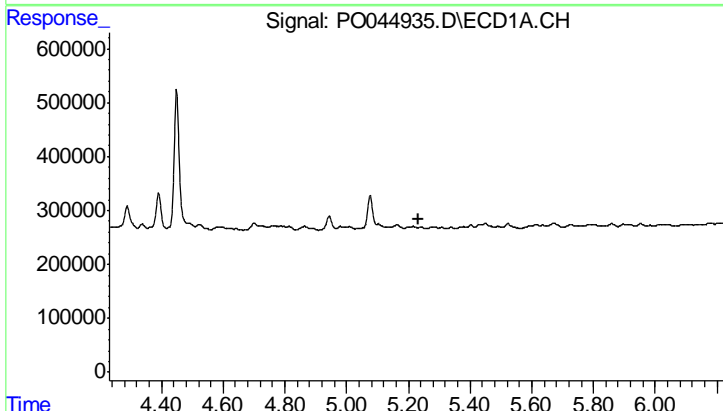


#11 AR-1232-1
 R.T.: 4.391 min
 Delta R.T.: 0.002 min
 Response: 718477
 Conc: 217.98 ng/ml

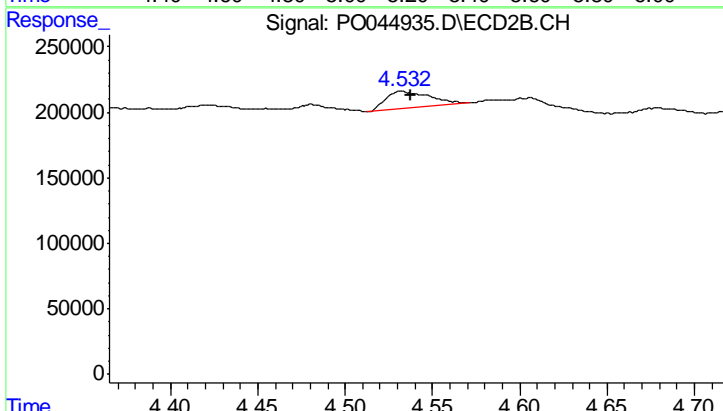
Instrument :
 ECD_O
 ClientSampled :
 051618-SIDI-F-U-S



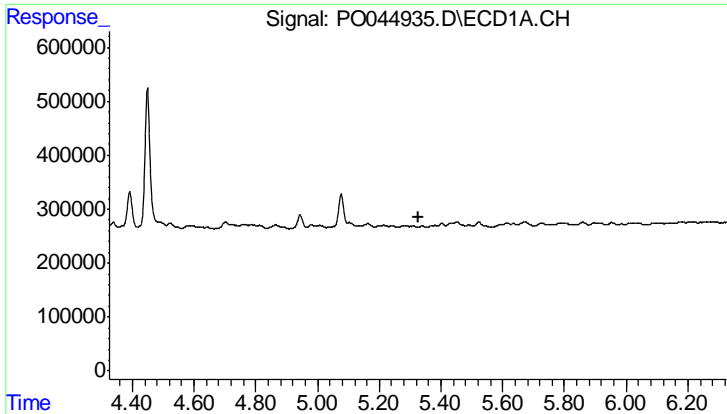
#11 AR-1232-1
 R.T.: 3.665 min
 Delta R.T.: 0.016 min
 Response: 540758
 Conc: 112.39 ng/ml



#14 AR-1232-4
 R.T.: 0.000 min
 Exp R.T. : 5.232 min
 Response: 0
 Conc: N.D.

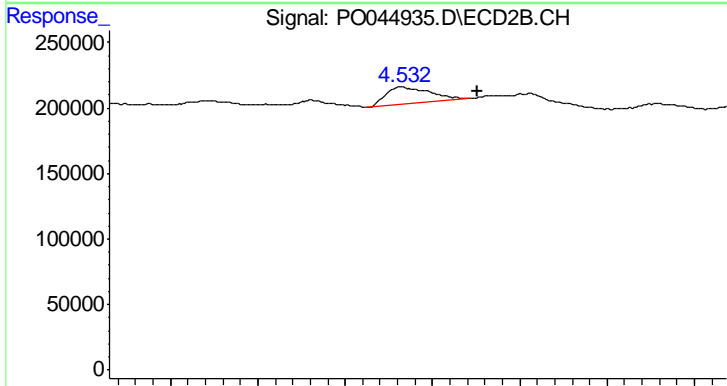


#14 AR-1232-4
 R.T.: 4.532 min
 Delta R.T.: -0.005 min
 Response: 222186
 Conc: 38.96 ng/ml

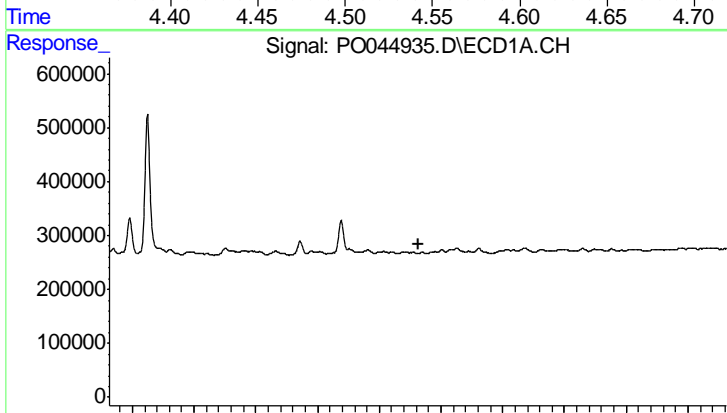


#15 AR-1232-5
 R.T.: 0.000 min
 Exp R.T.: 5.326 min
 Response: 0
 Conc: N.D.

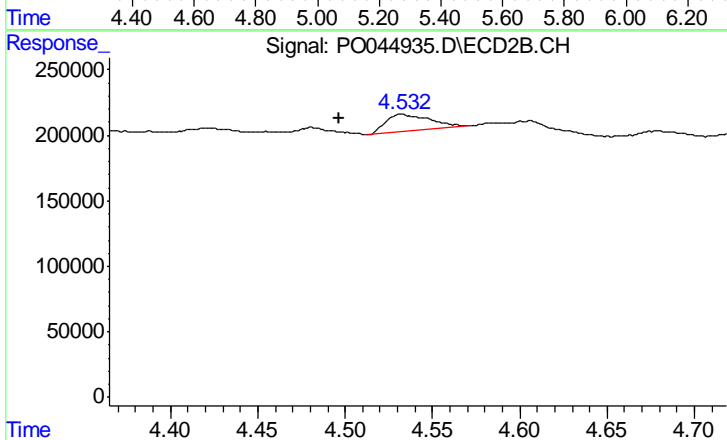
Instrument :
 ECD_O
 ClientSampleId :
 051618-SIDI-F-U-S



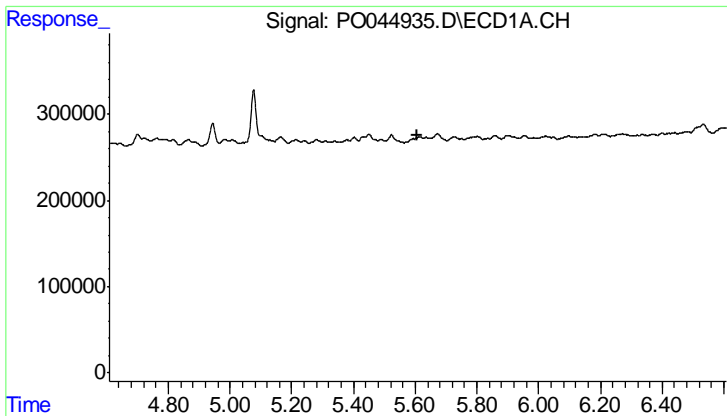
#15 AR-1232-5
 R.T.: 4.532 min
 Delta R.T.: -0.044 min
 Response: 222186
 Conc: 78.25 ng/ml



#18 AR-1242-3
 R.T.: 0.000 min
 Exp R.T.: 5.326 min
 Response: 0
 Conc: N.D.

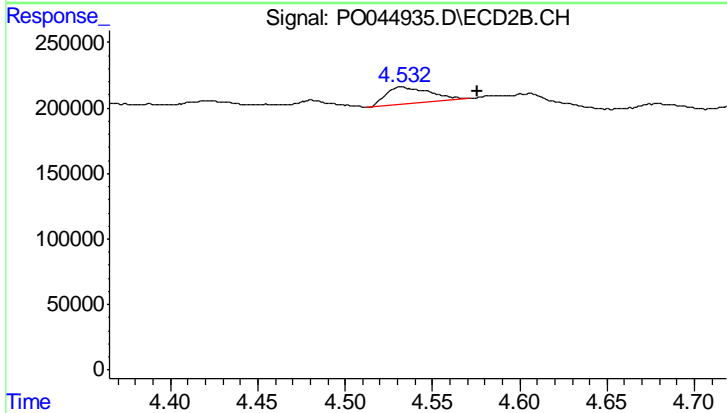


#18 AR-1242-3
 R.T.: 4.532 min
 Delta R.T.: 0.035 min
 Response: 222186
 Conc: 35.68 ng/ml

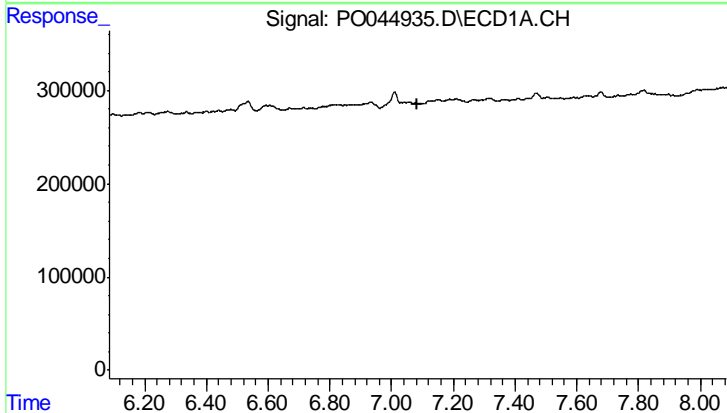


#19 AR-1242-4
 R.T.: 0.000 min
 Exp R.T.: 5.609 min
 Response: 0
 Conc: N.D.

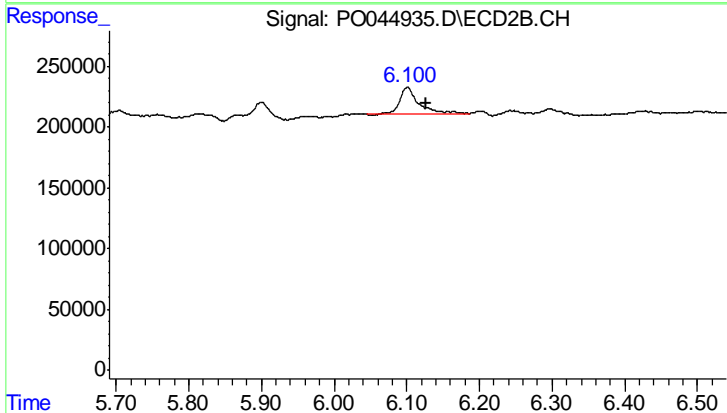
Instrument :
 ECD_O
 ClientSampleId :
 051618-SIDI-F-U-S



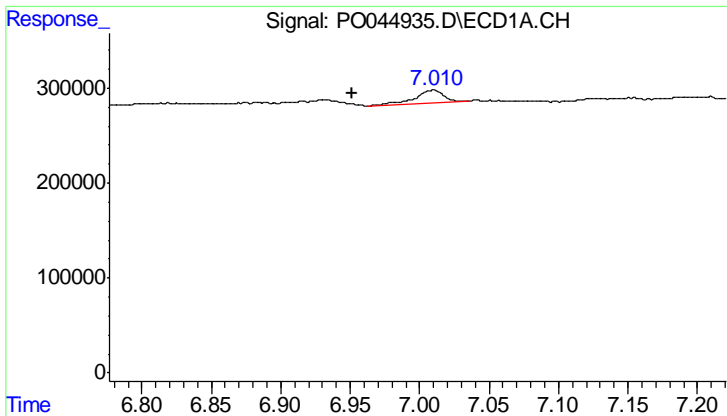
#19 AR-1242-4
 R.T.: 4.532 min
 Delta R.T.: -0.044 min
 Response: 222186
 Conc: 37.59 ng/ml



#30 AR-1254-5
 R.T.: 0.000 min
 Exp R.T.: 7.085 min
 Response: 0
 Conc: N.D.



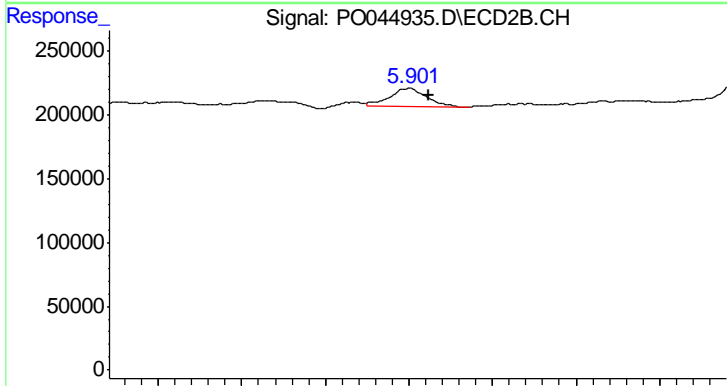
#30 AR-1254-5
 R.T.: 6.101 min
 Delta R.T.: -0.026 min
 Response: 410775
 Conc: 37.40 ng/ml



#32 AR-1260-2

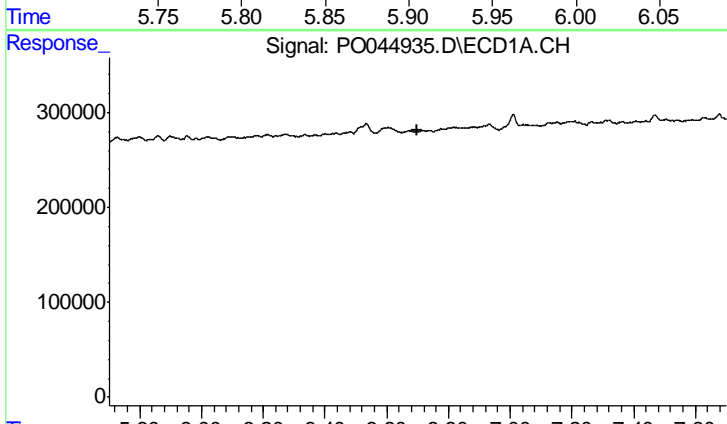
R.T.: 7.010 min
 Delta R.T.: 0.058 min
 Response: 205101
 Conc: 16.18 ng/ml

Instrument :
 ECD_O
 ClientSampleId :
 051618-SIDI-F-U-S



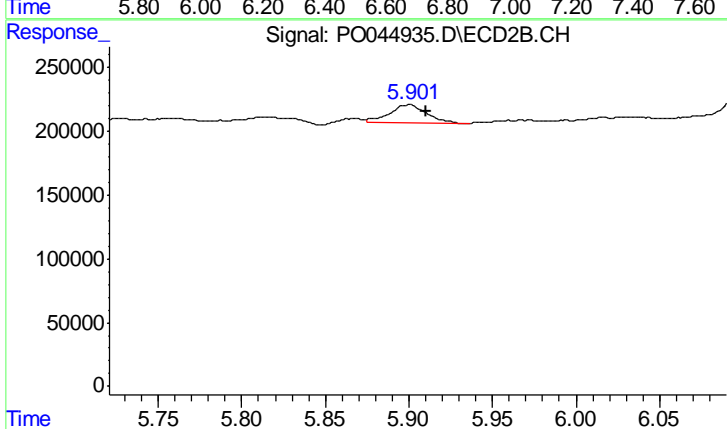
#32 AR-1260-2

R.T.: 5.901 min
 Delta R.T.: -0.011 min
 Response: 224588
 Conc: 10.35 ng/ml



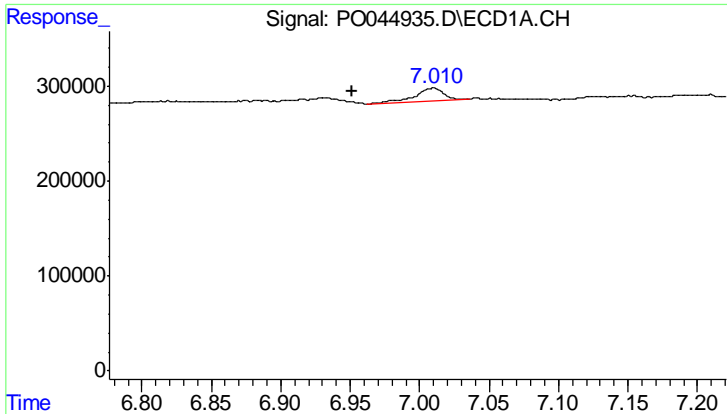
#36 AR-1262-1

R.T.: 0.000 min
 Exp R.T. : 6.701 min
 Response: 0
 Conc: N.D.



#36 AR-1262-1

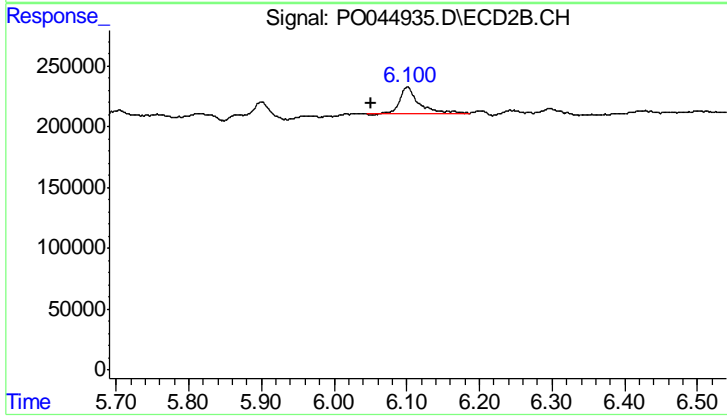
R.T.: 5.901 min
 Delta R.T.: -0.010 min
 Response: 224588
 Conc: 12.52 ng/ml



#37 AR-1262-2

R.T.: 7.010 min
Delta R.T.: 0.058 min
Response: 205101
Conc: 19.47 ng/ml

Instrument :
ECD_O
ClientSampled :
051618-SIDI-F-U-S



#37 AR-1262-2

R.T.: 6.101 min
Delta R.T.: 0.049 min
Response: 410775
Conc: 24.38 ng/ml