

Data Path : P:\HPCHEM1\ECD\_O\Data\PO052318\  
 Data File : PO044999.D  
 Signal(s) : Signal #1: ECD1A.CH Signal #2: ECD2B.CH  
 Acq On : 24 May 2018 3:52  
 Operator : SM/UA  
 Sample : J3047-02  
 Misc :  
 ALS Vial : 41 Sample Multiplier: 1

Instrument :  
 ECD\_O  
 ClientSampleId :  
 051818-SIDI-E-D-M

Integration File signal 1: autoint1.e  
 Integration File signal 2: autoint2.e  
 Quant Time: May 24 06:12:19 2018  
 Quant Method : P:\HPCHEM1\ECD\_O\methods\PO051518.M  
 Quant Title : GC EXTRACTABLES  
 QLast Update : Tue May 15 15:44:07 2018  
 Response via : Initial Calibration  
 Integrator: ChemStation 6890 Scale Mode: Small noise peaks clipped

Volume Inj. : 2 µl  
 Signal #1 Phase : ZB-MR1 Signal #2 Phase: ZB-MR2  
 Signal #1 Info : 30Mx0.32mmx 0.50µ Signal #2 Info : 30M x 0.32mm x 0.25µm

Compound	RT#1	RT#2	Resp#1	Resp#2	ng/ml	ng/ml
-----						
System Monitoring Compounds						
1) SA Tetrachlo...	4.016	3.288	5150940	6071297	33.614	25.326
2) SA Decachlor...	9.313	0.000	4757639	0	23.139	N.D. #
Target Compounds						
4) L1 AR-1016-2	0.000	4.529	0	223586	N.D.	41.484 #
5) L1 AR-1016-3	0.000	4.529	0	223586	N.D.	35.031 #
10) L2 AR-1221-3	4.447	3.664	2599265	484528	353.578	44.529 #
11) L3 AR-1232-1	4.447	3.664	2599265	484528	788.584	100.705 #
14) L3 AR-1232-4	0.000	4.529	0	223586	N.D.	39.207 #
15) L3 AR-1232-5	0.000	4.529	0	223586	N.D.	78.742 #
18) L4 AR-1242-3	0.000	4.529	0	223586	N.D.	35.903 #
19) L4 AR-1242-4	0.000	4.529	0	223586	N.D.	37.830 #
22) L5 AR-1248-2	0.000	4.851	0	107216	N.D.	12.778 #
32) L7 AR-1260-2	0.000	5.897	0	265737	N.D.	12.242 #
36) L8 AR-1262-1	0.000	5.897	0	265737	N.D.	14.809 #
-----						

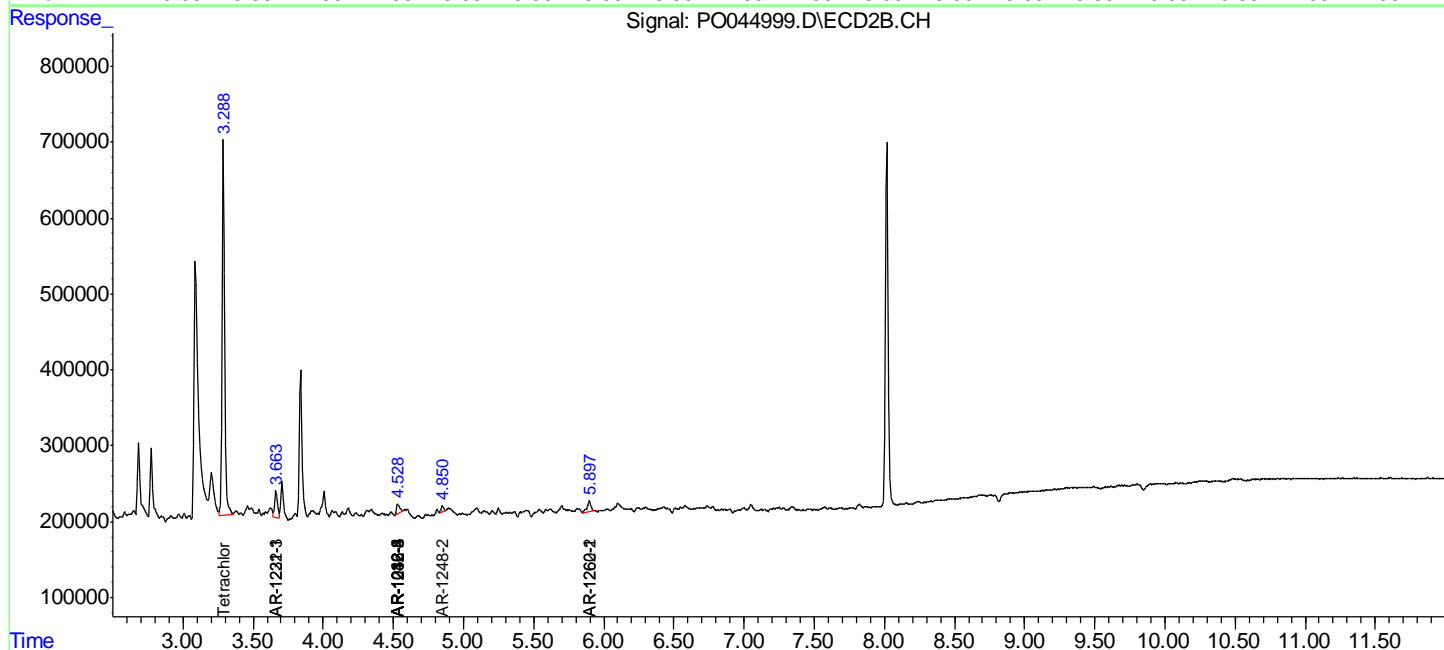
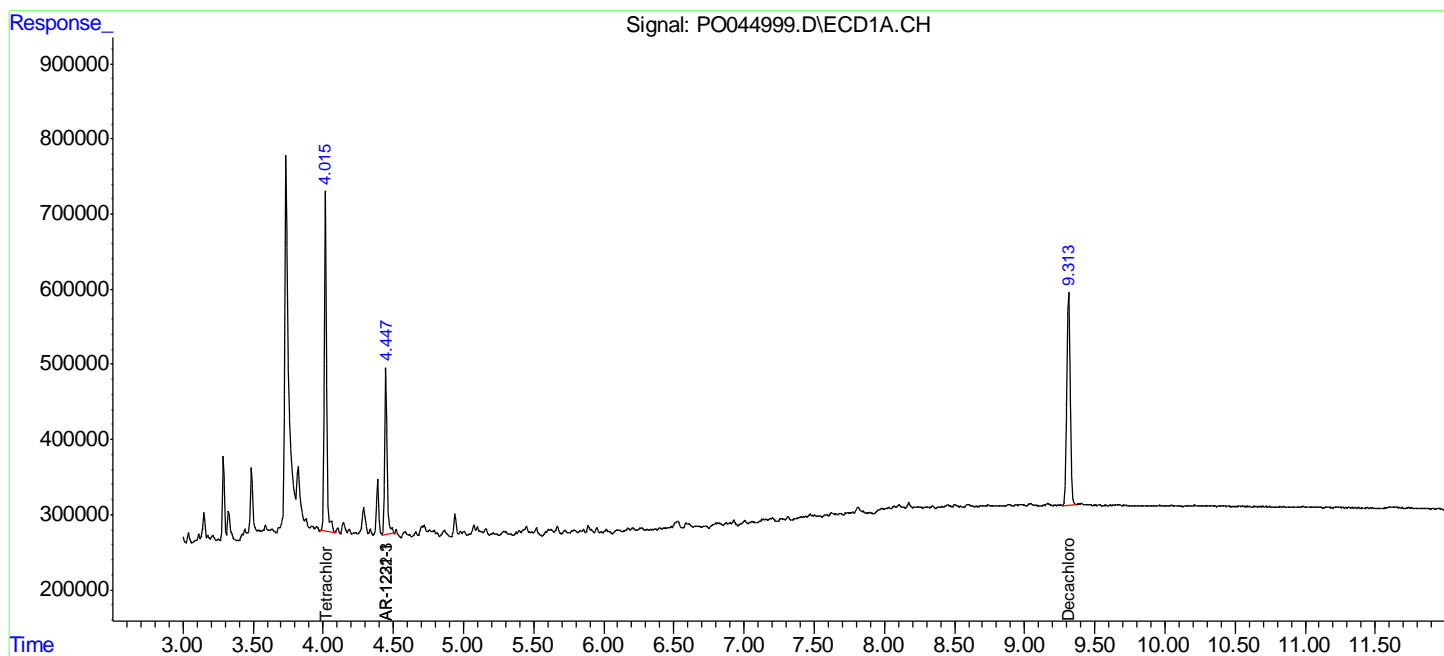
(f)=RT Delta > 1/2 Window (#)=Amounts differ by > 25% (m)=manual int.

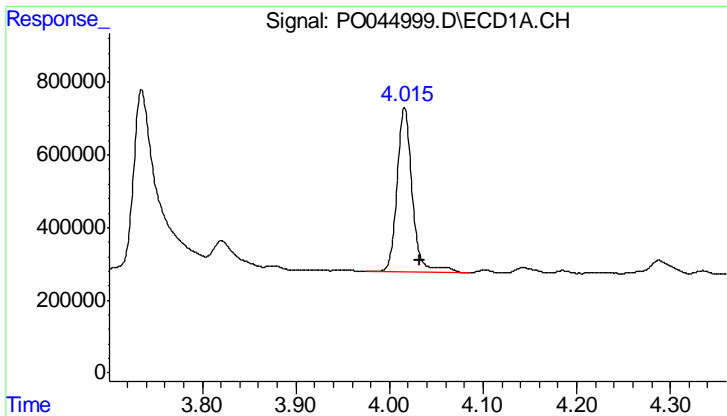
Data Path : P:\HPCHEM1\ECD\_O\Data\PO052318\  
 Data File : PO044999.D  
 Signal(s) : Signal #1: ECD1A.CH Signal #2: ECD2B.CH  
 Acq On : 24 May 2018 3:52  
 Operator : SM/UA  
 Sample : J3047-02  
 Misc :  
 ALS Vial : 41 Sample Multiplier: 1

Instrument :  
 ECD\_O  
 ClientSampleId :  
 051818-SIDI-E-D-M

Integration File signal 1: autoint1.e  
 Integration File signal 2: autoint2.e  
 Quant Time: May 24 06:12:19 2018  
 Quant Method : P:\HPCHEM1\ECD\_O\methods\PO051518.M  
 Quant Title : GC EXTRACTABLES  
 QLast Update : Tue May 15 15:44:07 2018  
 Response via : Initial Calibration  
 Integrator: ChemStation 6890 Scale Mode: Small noise peaks clipped

Volume Inj. : 2 µl  
 Signal #1 Phase : ZB-MR1 Signal #2 Phase: ZB-MR2  
 Signal #1 Info : 30Mx0.32mmx 0.50µ Signal #2 Info : 30M x 0.32mm x 0.25µm

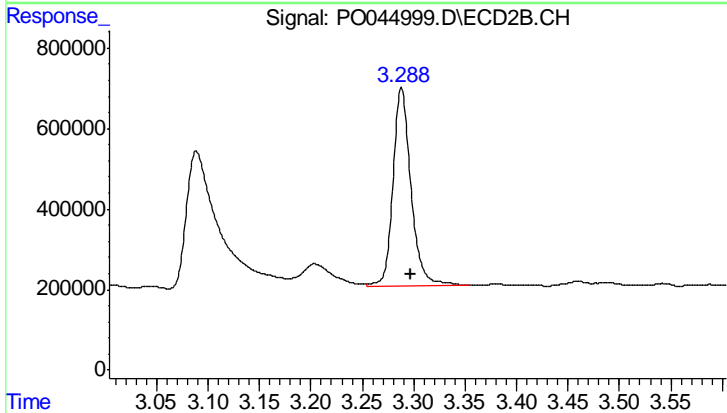




#1 Tetrachloro-m-xylene

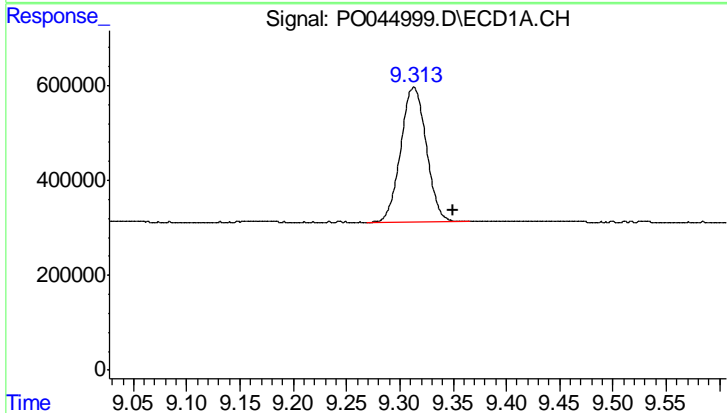
R.T.: 4.016 min  
 Delta R.T.: -0.017 min  
 Response: 5150940  
 Conc: 33.61 ng/ml

Instrument :  
 ECD\_O  
 ClientSampleId :  
 051818-SIDI-E-D-M



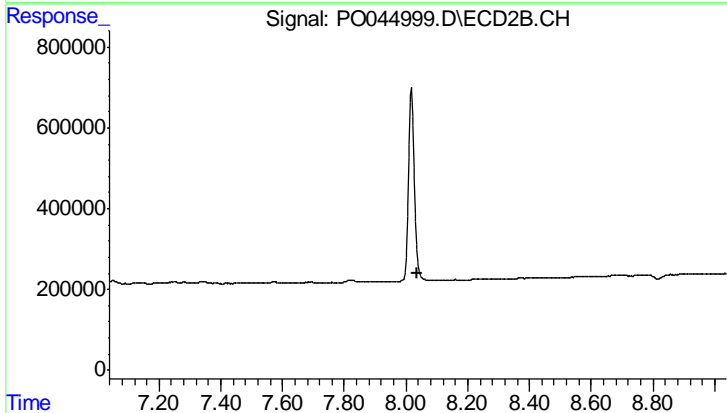
#1 Tetrachloro-m-xylene

R.T.: 3.288 min  
 Delta R.T.: -0.010 min  
 Response: 6071297  
 Conc: 25.33 ng/ml



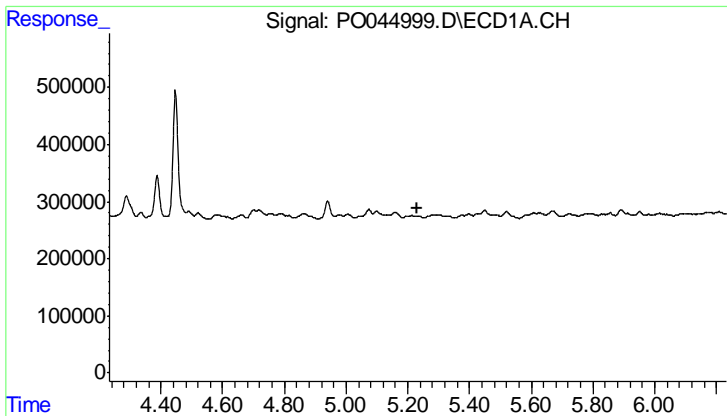
#2 Decachlorobiphenyl

R.T.: 9.313 min  
 Delta R.T.: -0.038 min  
 Response: 4757639  
 Conc: 23.14 ng/ml



#2 Decachlorobiphenyl

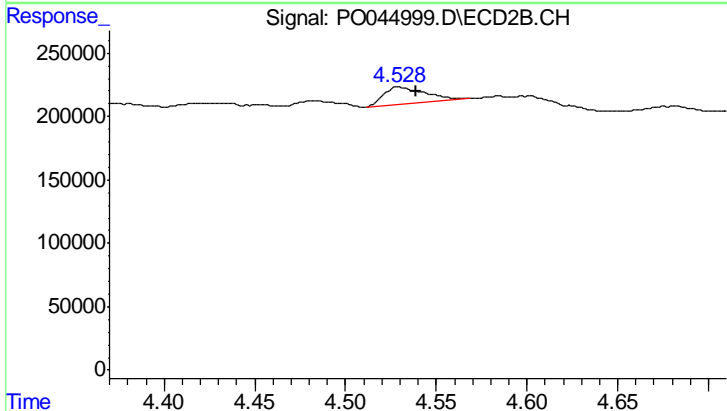
R.T.: 0.000 min  
 Exp R.T. : 8.038 min  
 Response: 0  
 Conc: N.D.



#4 AR-1016-2

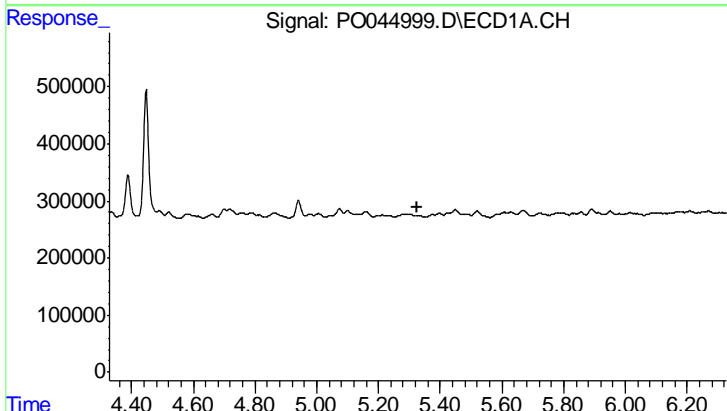
R.T.: 0.000 min  
 Exp R.T.: 5.232 min  
 Response: 0  
 Conc: N.D.

Instrument :  
 ECD\_O  
 ClientSampleId :  
 051818-SIDI-E-D-M



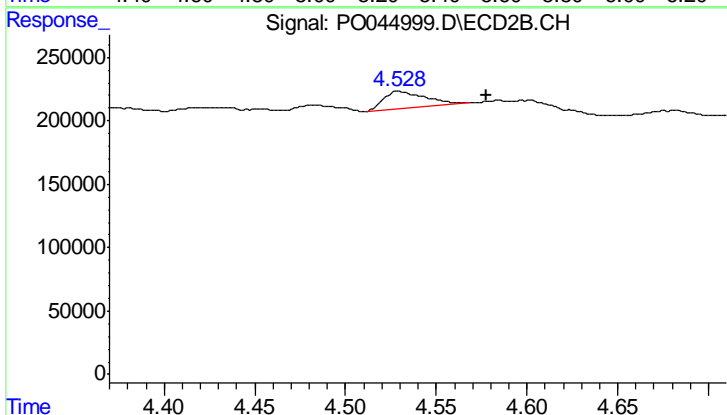
#4 AR-1016-2

R.T.: 4.529 min  
 Delta R.T.: -0.010 min  
 Response: 223586  
 Conc: 41.48 ng/ml



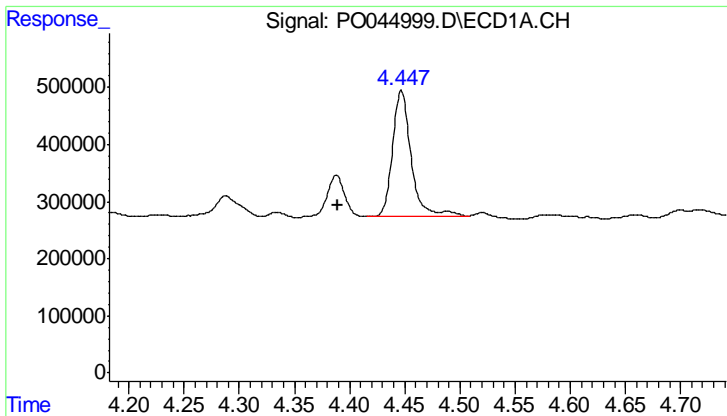
#5 AR-1016-3

R.T.: 0.000 min  
 Exp R.T.: 5.328 min  
 Response: 0  
 Conc: N.D.



#5 AR-1016-3

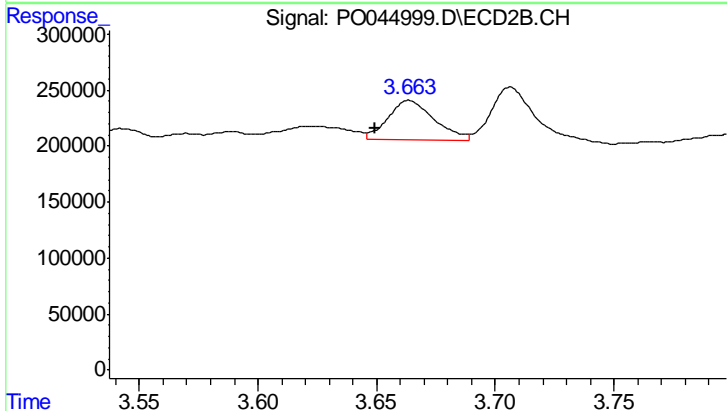
R.T.: 4.529 min  
 Delta R.T.: -0.048 min  
 Response: 223586  
 Conc: 35.03 ng/ml



#10 AR-1221-3

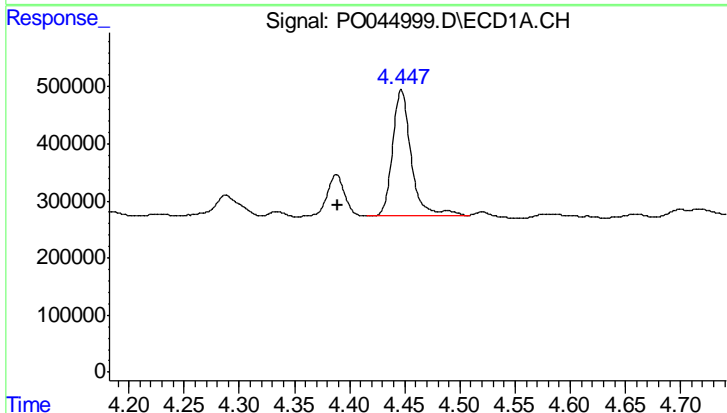
R.T.: 4.447 min  
 Delta R.T.: 0.057 min  
 Response: 2599265  
 Conc: 353.58 ng/ml

Instrument :  
 ECD\_O  
 ClientSampled :  
 051818-SIDI-E-D-M



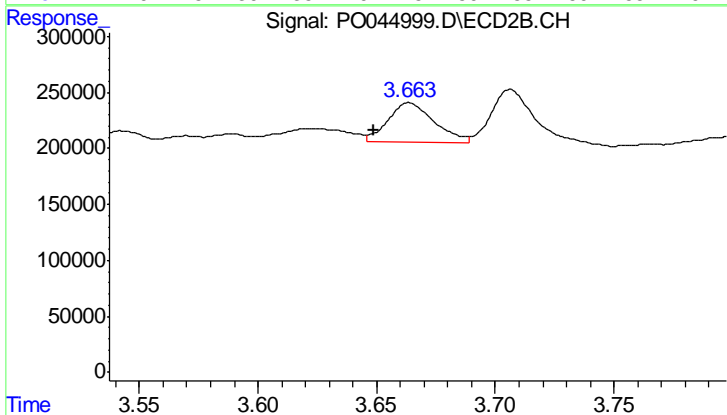
#10 AR-1221-3

R.T.: 3.664 min  
 Delta R.T.: 0.014 min  
 Response: 484528  
 Conc: 44.53 ng/ml



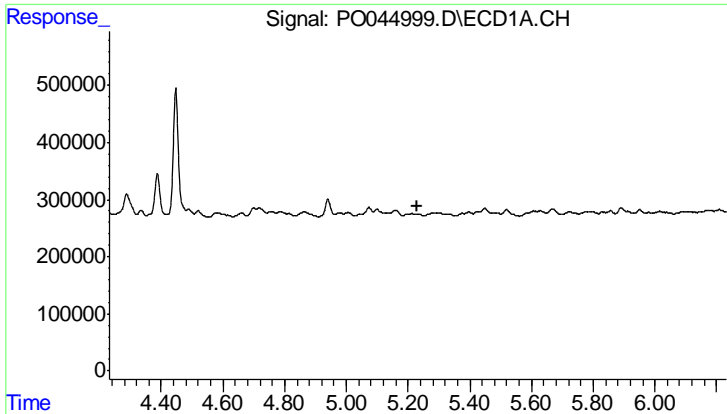
#11 AR-1232-1

R.T.: 4.447 min  
 Delta R.T.: 0.058 min  
 Response: 2599265  
 Conc: 788.58 ng/ml



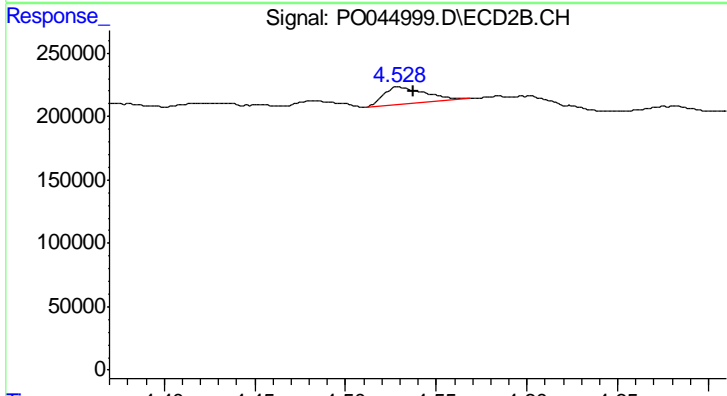
#11 AR-1232-1

R.T.: 3.664 min  
 Delta R.T.: 0.015 min  
 Response: 484528  
 Conc: 100.71 ng/ml

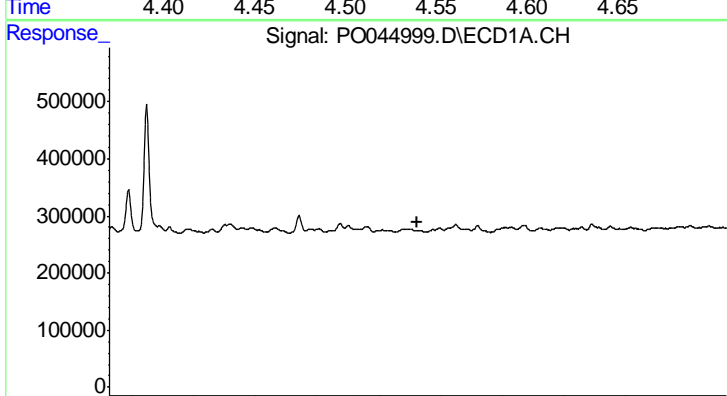


#14 AR-1232-4  
 R.T.: 0.000 min  
 Exp R.T.: 5.232 min  
 Response: 0  
 Conc: N.D.

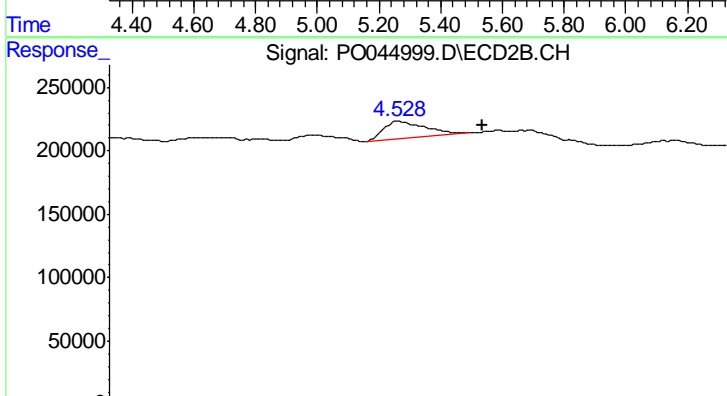
Instrument :  
 ECD\_O  
 ClientSampleId :  
 051818-SIDI-E-D-M



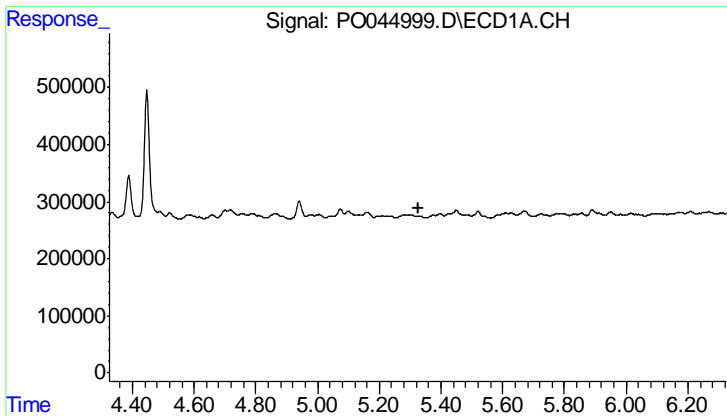
#14 AR-1232-4  
 R.T.: 4.529 min  
 Delta R.T.: -0.008 min  
 Response: 223586  
 Conc: 39.21 ng/ml



#15 AR-1232-5  
 R.T.: 0.000 min  
 Exp R.T.: 5.326 min  
 Response: 0  
 Conc: N.D.

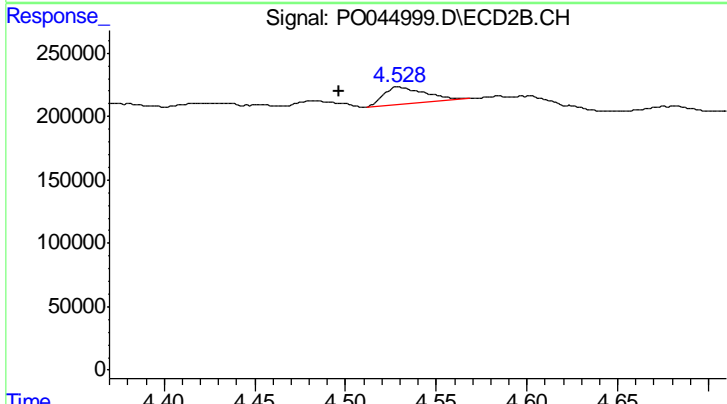


#15 AR-1232-5  
 R.T.: 4.529 min  
 Delta R.T.: -0.047 min  
 Response: 223586  
 Conc: 78.74 ng/ml

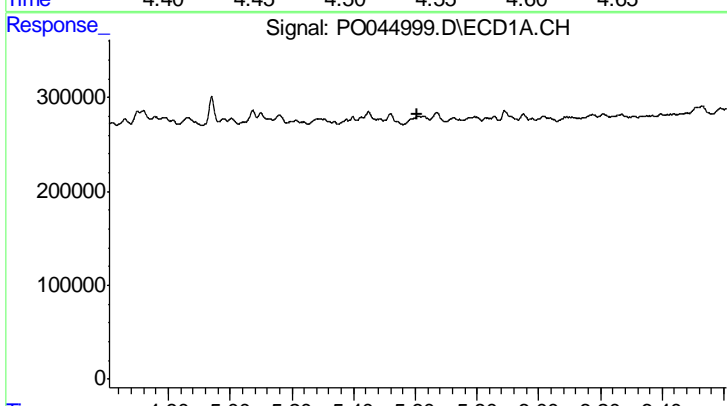


#18 AR-1242-3  
 R.T.: 0.000 min  
 Exp R.T.: 5.326 min  
 Response: 0  
 Conc: N.D.

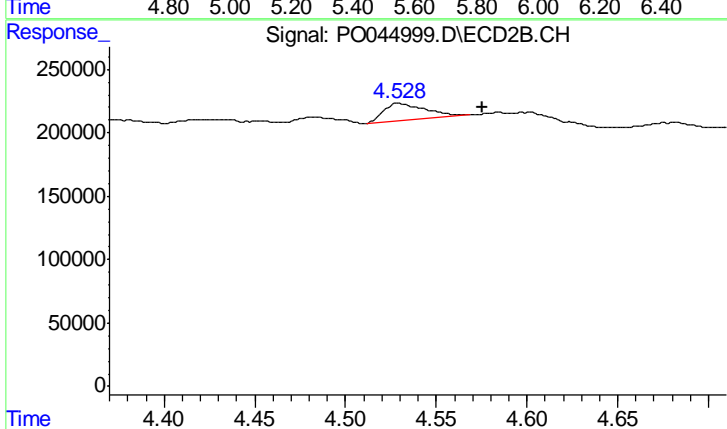
Instrument :  
 ECD\_O  
 ClientSampleId :  
 051818-SIDI-E-D-M



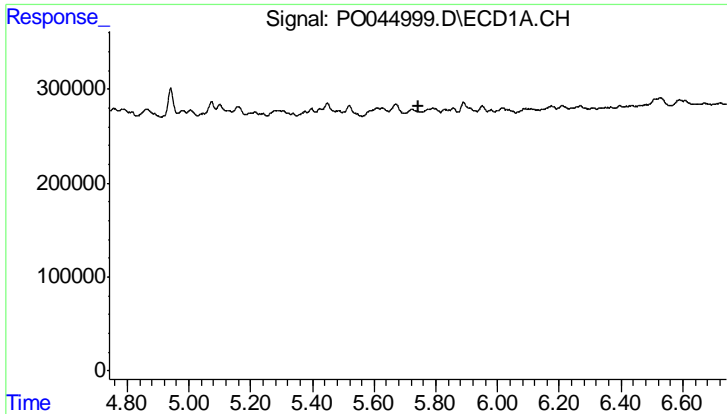
#18 AR-1242-3  
 R.T.: 4.529 min  
 Delta R.T.: 0.032 min  
 Response: 223586  
 Conc: 35.90 ng/ml



#19 AR-1242-4  
 R.T.: 0.000 min  
 Exp R.T.: 5.609 min  
 Response: 0  
 Conc: N.D.

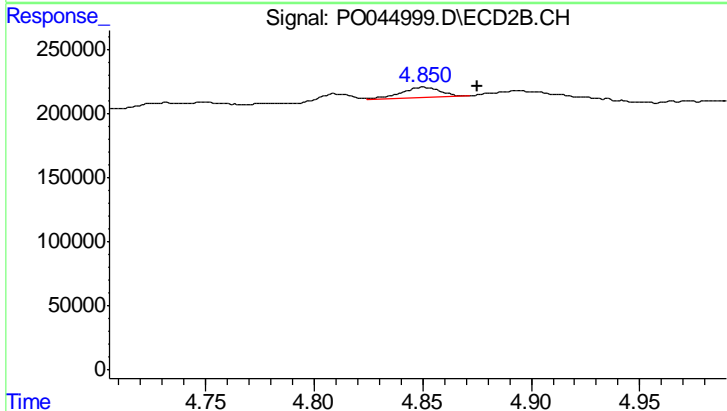


#19 AR-1242-4  
 R.T.: 4.529 min  
 Delta R.T.: -0.047 min  
 Response: 223586  
 Conc: 37.83 ng/ml

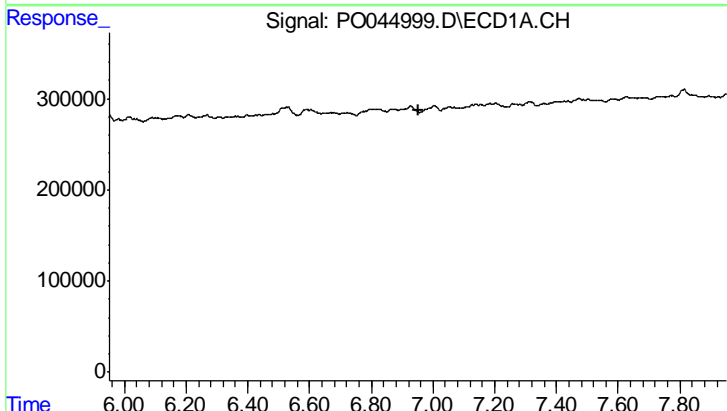


#22 AR-1248-2  
 R.T.: 0.000 min  
 Exp R.T.: 5.742 min  
 Response: 0  
 Conc: N.D.

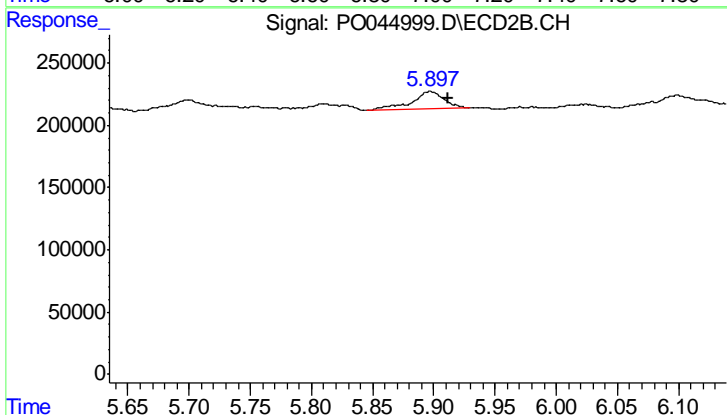
Instrument :  
 ECD\_O  
 ClientSampled :  
 051818-SIDI-E-D-M



#22 AR-1248-2  
 R.T.: 4.851 min  
 Delta R.T.: -0.024 min  
 Response: 107216  
 Conc: 12.78 ng/ml

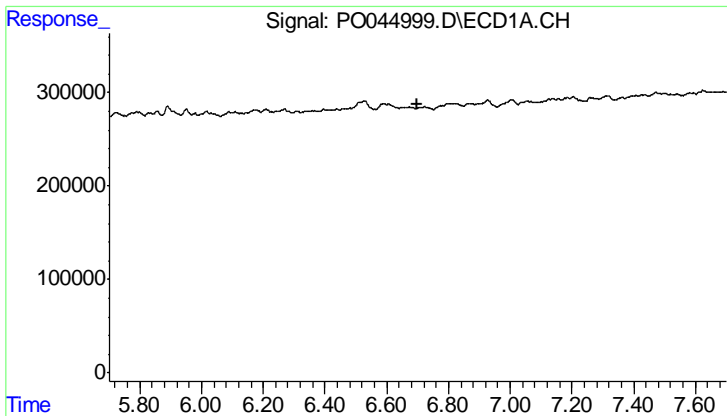


#32 AR-1260-2  
 R.T.: 0.000 min  
 Exp R.T.: 6.951 min  
 Response: 0  
 Conc: N.D.



#32 AR-1260-2  
 R.T.: 5.897 min  
 Delta R.T.: -0.014 min  
 Response: 265737  
 Conc: 12.24 ng/ml

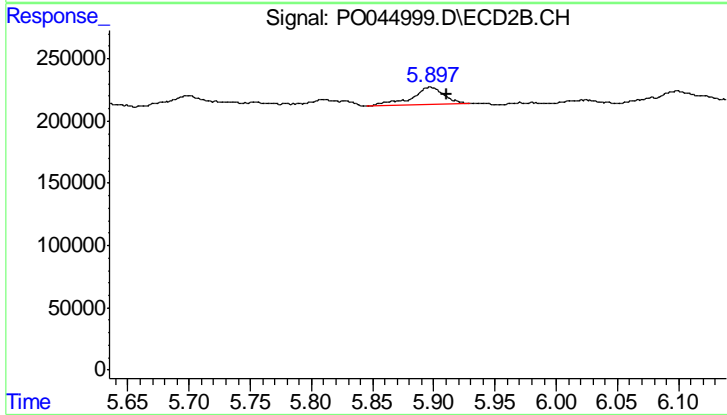




#36 AR-1262-1

R.T.: 0.000 min  
 Exp R.T.: 6.701 min  
 Response: 0  
 Conc: N.D.

Instrument :  
 ECD\_O  
 ClientSampled :  
 051818-SIDI-E-D-M



#36 AR-1262-1

R.T.: 5.897 min  
 Delta R.T.: -0.013 min  
 Response: 265737  
 Conc: 14.81 ng/ml