

Data Path : P:\HPCHEM1\ECD_O\Data\PO052318\
 Data File : PO044974.D
 Signal(s) : Signal #1: ECD1A.CH Signal #2: ECD2B.CH
 Acq On : 23 May 2018 21:36
 Operator : SM/UA
 Sample : J3009-04
 Misc :
 ALS Vial : 20 Sample Multiplier: 1

Instrument :
 ECD_O
ClientSampleId :
 051718-SIDI-E-U-B

Manual Integrations
APPROVED
 ugo
 5/24/2018 9:12:23 PM

Integration File signal 1: autoint1.e
 Integration File signal 2: autoint2.e
 Quant Time: May 24 04:13:39 2018
 Quant Method : P:\HPCHEM1\ECD_O\methods\PO051518.M
 Quant Title : GC EXTRACTABLES
 QLast Update : Tue May 15 15:44:07 2018
 Response via : Initial Calibration
 Integrator: ChemStation 6890 Scale Mode: Small noise peaks clipped

Volume Inj. : 2 µl
 Signal #1 Phase : ZB-MR1 Signal #2 Phase: ZB-MR2
 Signal #1 Info : 30Mx0.32mmx 0.50µ Signal #2 Info : 30M x 0.32mm x 0.25µm

Compound	RT#1	RT#2	Resp#1	Resp#2	ng/ml	ng/ml

System Monitoring Compounds						
1) SA Tetrachlo...	4.016	3.288	4725803	5716767	30.839m	23.848
2) SA Decachlor...	9.315	8.018	4151053	5505124	20.189	19.564m

Target Compounds

 (f)=RT Delta > 1/2 Window (#)=Amounts differ by > 25% (m)=manual int.

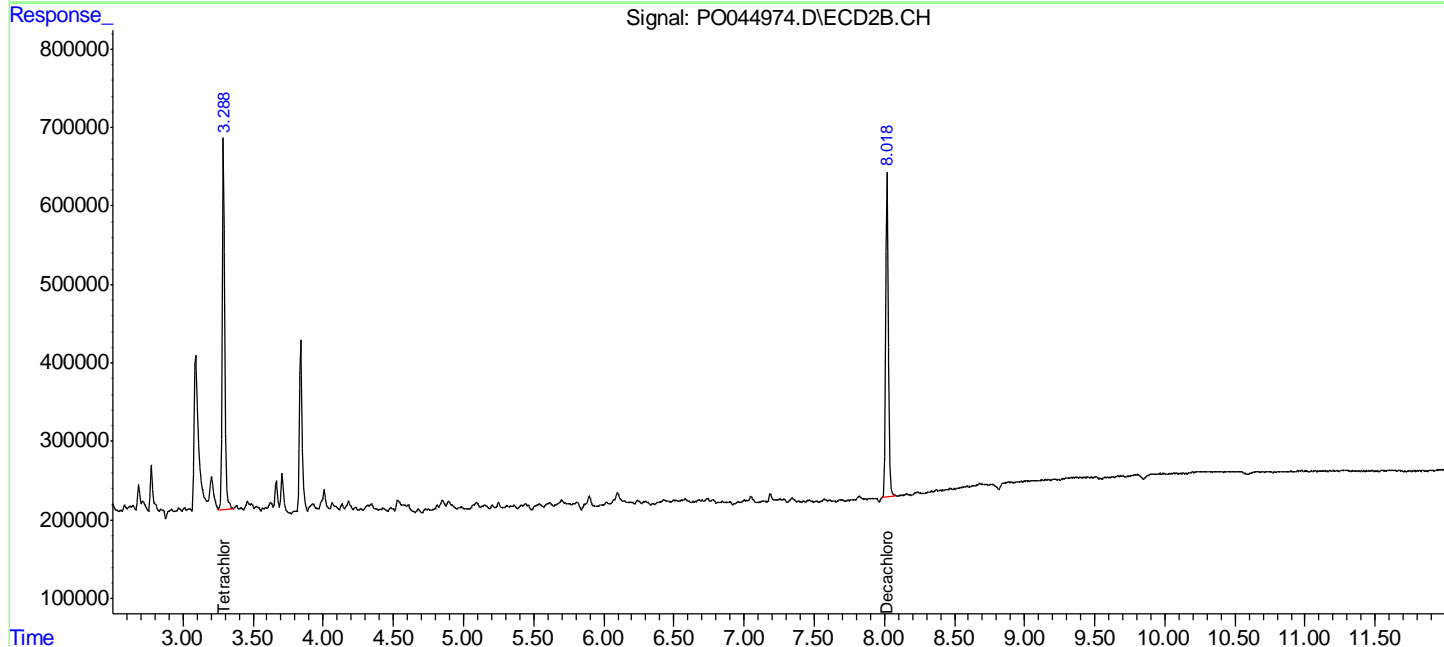
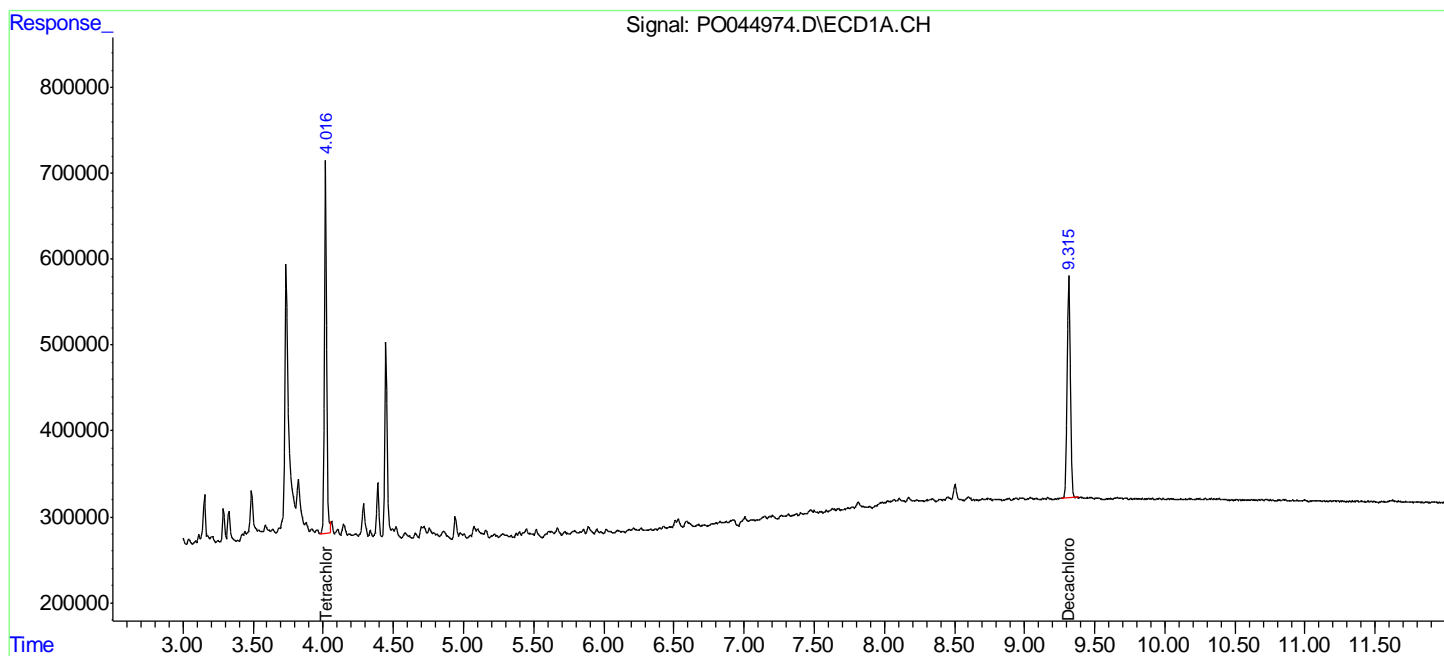
Data Path : P:\HPCHEM1\ECD_O\Data\PO052318\
 Data File : PO044974.D
 Signal(s) : Signal #1: ECD1A.CH Signal #2: ECD2B.CH
 Acq On : 23 May 2018 21:36
 Operator : SM/UA
 Sample : J3009-04
 Misc :
 ALS Vial : 20 Sample Multiplier: 1

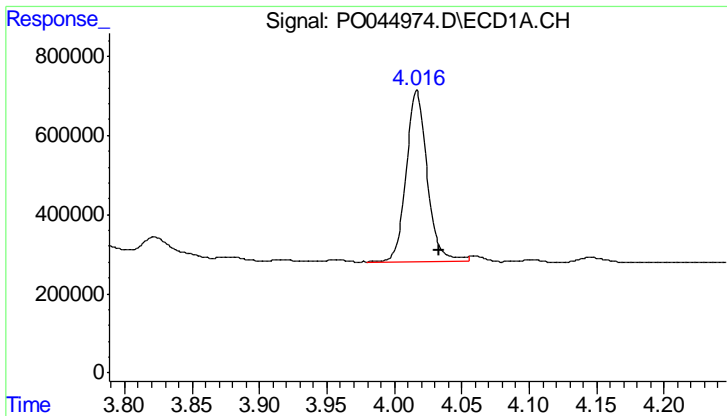
Instrument :
 ECD_O
Client Sampled :
 051718-SIDI-E-U-B

Manual Integrations
APPROVED
 ugo
 5/24/2018 9:12:23 PM

Integration File signal 1: autoint1.e
 Integration File signal 2: autoint2.e
 Quant Time: May 24 04:13:39 2018
 Quant Method : P:\HPCHEM1\ECD_O\methods\PO051518.M
 Quant Title : GC EXTRACTABLES
 QLast Update : Tue May 15 15:44:07 2018
 Response via : Initial Calibration
 Integrator: ChemStation 6890 Scale Mode: Small noise peaks clipped

Volume Inj. : 2 µl
 Signal #1 Phase : ZB-MR1 Signal #2 Phase: ZB-MR2
 Signal #1 Info : 30Mx0.32mmx 0.50µ Signal #2 Info : 30M x 0.32mm x 0.25µm





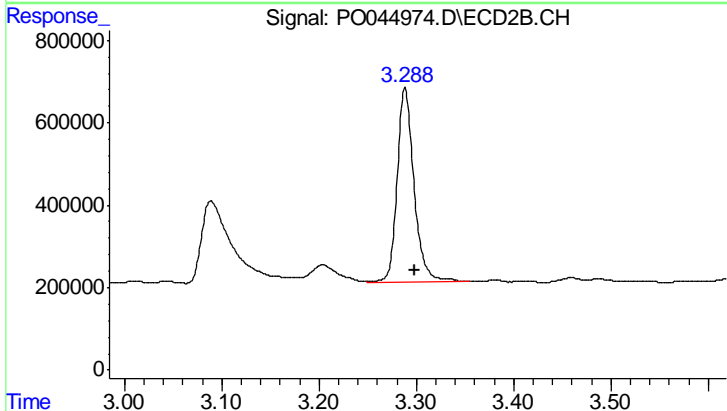
#1 Tetrachloro-m-xylene

R.T.: 4.016 min
 Delta R.T.: -0.016 min
 Response: 4725803
 Conc: 30.84 ng/ml

Instrument :
 ECD_O
 ClientSampleId :
 051718-SIDI-E-U-B

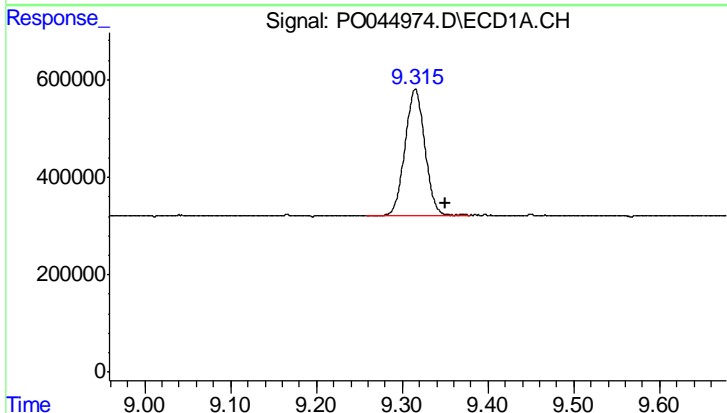
Manual Integrations
 APPROVED

ugo
 5/24/2018 9:12:23 PM



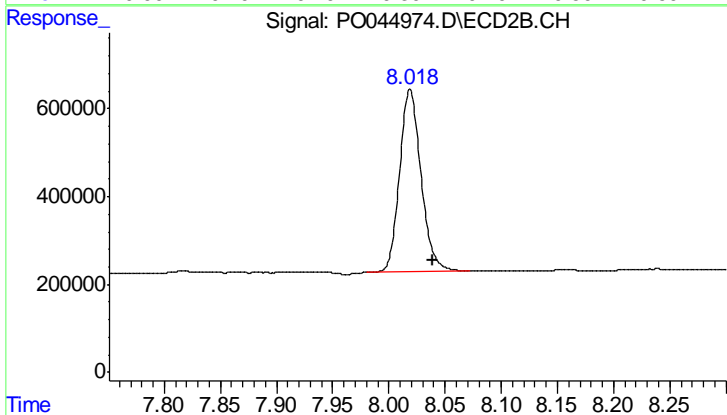
#1 Tetrachloro-m-xylene

R.T.: 3.288 min
 Delta R.T.: -0.009 min
 Response: 5716767
 Conc: 23.85 ng/ml



#2 Decachlorobiphenyl

R.T.: 9.315 min
 Delta R.T.: -0.035 min
 Response: 4151053
 Conc: 20.19 ng/ml



#2 Decachlorobiphenyl

R.T.: 8.018 min
 Delta R.T.: -0.020 min
 Response: 5505124
 Conc: 19.56 ng/ml m