

Data Path : P:\HPCHEM1\ECD\_O\Data\PO052318\  
 Data File : PO044978.D  
 Signal(s) : Signal #1: ECD1A.CH Signal #2: ECD2B.CH  
 Acq On : 23 May 2018 22:36  
 Operator : SM/UA  
 Sample : J3009-08  
 Misc :  
 ALS Vial : 24 Sample Multiplier: 1

**Instrument :**  
 ECD\_O  
**ClientSampleId :**  
 051718-JETW-F-D-M

**Manual Integrations**  
**APPROVED**  
 ugo  
 5/24/2018 9:11:33 PM

Integration File signal 1: autoint1.e  
 Integration File signal 2: autoint2.e  
 Quant Time: May 24 04:32:23 2018  
 Quant Method : P:\HPCHEM1\ECD\_O\methods\PO051518.M  
 Quant Title : GC EXTRACTABLES  
 QLast Update : Tue May 15 15:44:07 2018  
 Response via : Initial Calibration  
 Integrator: ChemStation 6890 Scale Mode: Small noise peaks clipped

Volume Inj. : 2 µl  
 Signal #1 Phase : ZB-MR1 Signal #2 Phase: ZB-MR2  
 Signal #1 Info : 30Mx0.32mmx 0.50µ Signal #2 Info : 30M x 0.32mm x 0.25µm

Compound	RT#1	RT#2	Resp#1	Resp#2	ng/ml	ng/ml
-----						
System Monitoring Compounds						
1) SA Tetrachlo...	4.017	3.289	4479908	5342335	29.235	22.286
2) SA Decachlor...	9.315	8.018	4312132	5790676	20.972	20.579m

Target Compounds

-----  
 (f)=RT Delta > 1/2 Window (#)=Amounts differ by > 25% (m)=manual int.

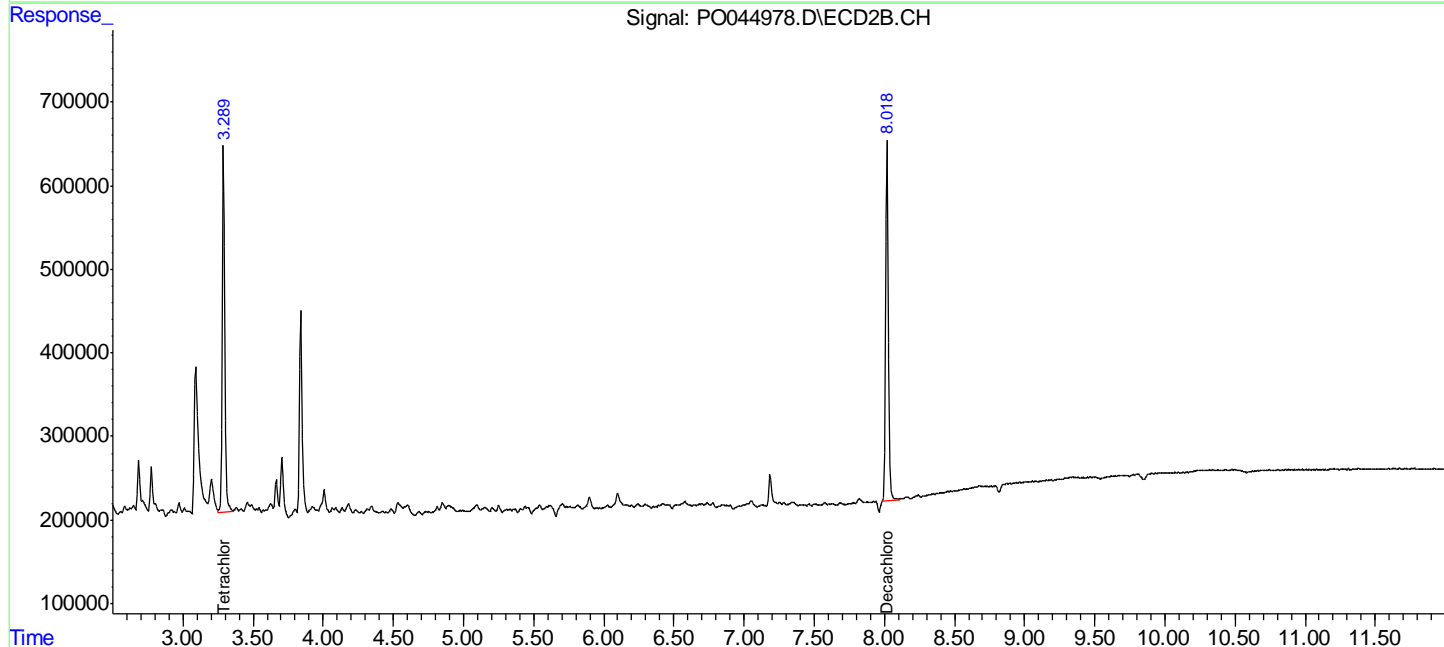
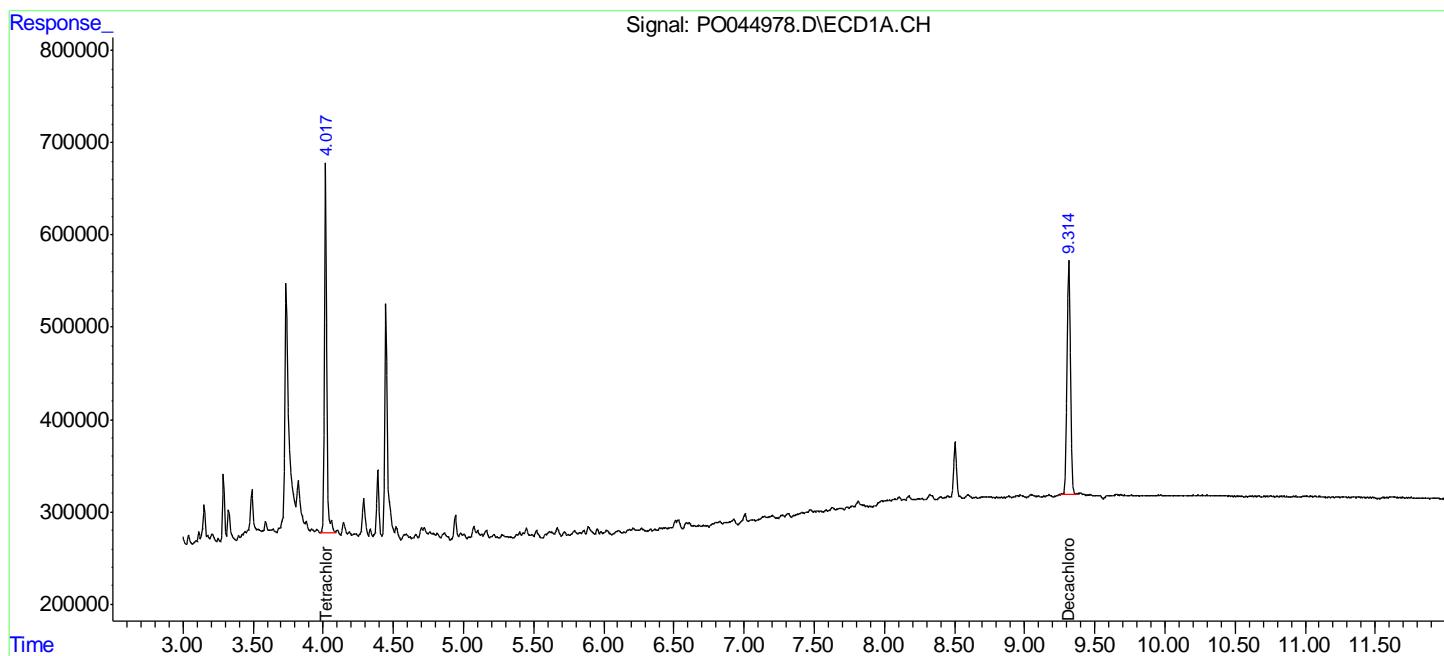
Data Path : P:\HPCHEM1\ECD\_O\Data\PO052318\  
 Data File : PO044978.D  
 Signal(s) : Signal #1: ECD1A.CH Signal #2: ECD2B.CH  
 Acq On : 23 May 2018 22:36  
 Operator : SM/UA  
 Sample : J3009-08  
 Misc :  
 ALS Vial : 24 Sample Multiplier: 1

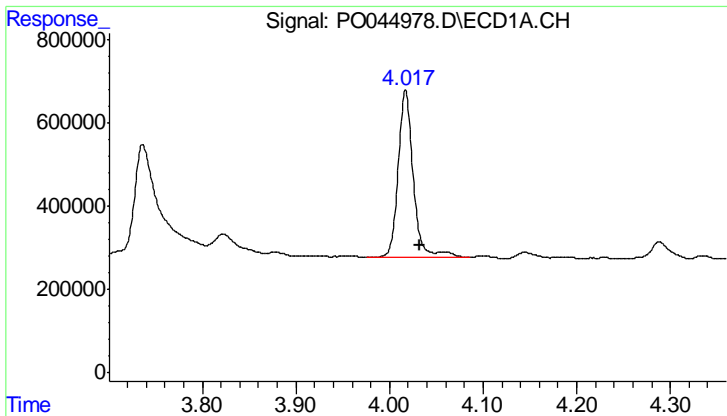
**Instrument :**  
 ECD\_O  
**ClientSampled :**  
 051718-JETW-F-D-M

**Manual Integrations**  
**APPROVED**  
 ugo  
 5/24/2018 9:11:33 PM

Integration File signal 1: autoint1.e  
 Integration File signal 2: autoint2.e  
 Quant Time: May 24 04:32:23 2018  
 Quant Method : P:\HPCHEM1\ECD\_O\methods\PO051518.M  
 Quant Title : GC EXTRACTABLES  
 QLast Update : Tue May 15 15:44:07 2018  
 Response via : Initial Calibration  
 Integrator: ChemStation 6890 Scale Mode: Small noise peaks clipped

Volume Inj. : 2 µl  
 Signal #1 Phase : ZB-MR1 Signal #2 Phase: ZB-MR2  
 Signal #1 Info : 30Mx0.32mmx 0.50µ Signal #2 Info : 30M x 0.32mm x 0.25µm



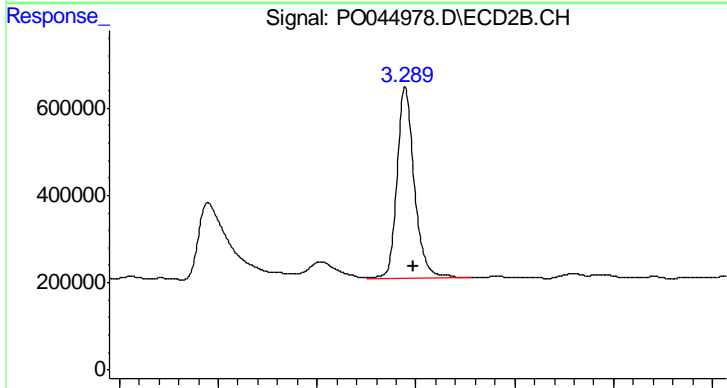


#1 Tetrachloro-m-xylene

R.T.: 4.017 min  
 Delta R.T.: -0.015 min  
 Response: 4479908  
 Conc: 29.23 ng/ml

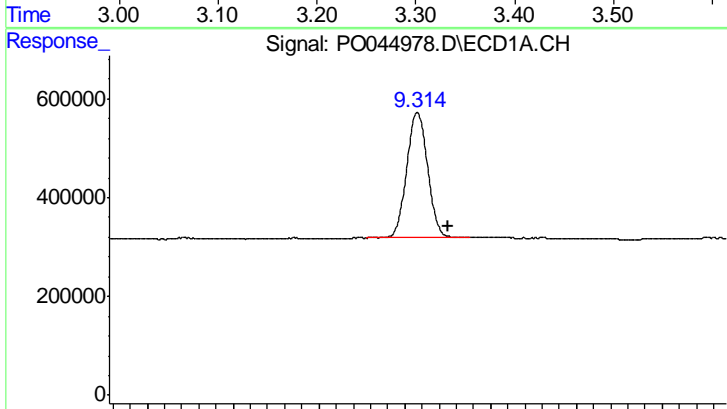
Instrument :  
 ECD\_O  
 ClientSampled :  
 051718-JETW-F-D-M

Manual Integrations  
 APPROVED  
 ugo  
 5/24/2018 9:11:33 PM



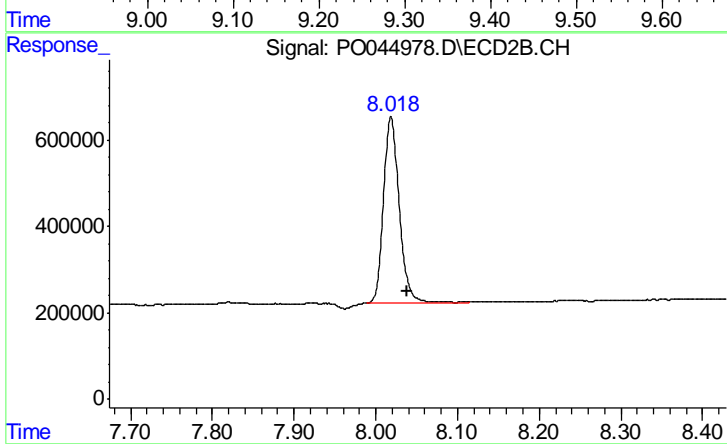
#1 Tetrachloro-m-xylene

R.T.: 3.289 min  
 Delta R.T.: -0.009 min  
 Response: 5342335  
 Conc: 22.29 ng/ml



#2 Decachlorobiphenyl

R.T.: 9.315 min  
 Delta R.T.: -0.036 min  
 Response: 4312132  
 Conc: 20.97 ng/ml



#2 Decachlorobiphenyl

R.T.: 8.018 min  
 Delta R.T.: -0.020 min  
 Response: 5790676  
 Conc: 20.58 ng/ml m