

Data Path : Z:\pestpcbsrv\HPCHEM1\ECD_0\Data\P0052319\
 Data File : P0056525.D
 Signal(s) : Signal #1: ECD1A.CH Signal #2: ECD2B.CH
 Acq On : 23 May 2019 12:48
 Operator : SM/SJ
 Sample : AR1660CCC500
 Misc :
 ALS Vial : 3 Sample Multiplier: 1

Instrument :
 ECD_0
 ClientSampled :
 AR1660CCC500

Integration File signal 1: autoint1.e
 Integration File signal 2: autoint2.e
 Quant Time: May 24 00:13:09 2019
 Quant Method : Z:\pestpcbsrv\HPCHEM1\ECD_0\methods\P0052319.M
 Quant Title : GC EXTRACTABLES
 QLast Update : Fri May 24 00:11:05 2019
 Response via : Initial Calibration
 Integrator: ChemStation 6890 Scale Mode: Small noise peaks clipped

Volume Inj. : 2 µl
 Signal #1 Phase : ZB-MR1 Signal #2 Phase: ZB-MR2
 Signal #1 Info : 30Mx0.32mmx 0.50µ Signal #2 Info : 30M x 0.32mm x 0.25µm

Compound	RT#1	RT#2	Resp#1	Resp#2	ng/ml	ng/ml
System Monitoring Compounds						
1) SA Tetrachlo...	4.259	3.572	2051643	1771332	53.591	53.712
2) SA Decachlor...	9.840	8.512	2594210	1909405	52.853	53.550
Target Compounds						
3) L1 AR-1016-1	5.442	4.643	2185796	645043	1215.262	512.554 #
4) L1 AR-1016-2	5.442	4.660	2185796	933648	870.463	518.226 #
5) L1 AR-1016-3	5.503	4.835	823699	511787	512.475	519.082
6) L1 AR-1016-4	5.601	4.875	680231	426773	518.548	515.525
7) L1 AR-1016-5	5.893	5.086	695368	541202	503.303	504.513
8) L2 AR-1221-1	4.465	3.781	67835	56794	107.380	111.987
9) L2 AR-1221-2	4.557	3.867	105236	85325	220.575	226.406
10) L2 AR-1221-3	4.632	3.942	406345	319105	274.916	266.575
11) L3 AR-1232-1	4.632	3.942	406345	319105	344.832	355.207
12) L3 AR-1232-2	5.154	4.660	606573	933648	914.837	960.663
13) L3 AR-1232-3	5.442	4.835	2185796	511787	1540.758	978.013 #
14) L3 AR-1232-4	5.601	4.917	680231	510041	966.337	1035.222
15) L3 AR-1232-5	5.691	5.086	632917	541202	1119.437	960.848
16) L4 AR-1242-1	5.442	4.643	2185796	645043	1266.986	520.791 #
17) L4 AR-1242-2	5.442	4.660	2185796	933648	860.965	519.148 #
18) L4 AR-1242-3	5.503	4.835	823699	511787	506.575	520.582
19) L4 AR-1242-4	5.601	4.917	680231	510041	508.879	524.141
20) L4 AR-1242-5	6.332	5.435	111318	421079	67.462	356.161 #
21) L5 AR-1248-1	5.442	4.643	2185796	645043	1696.369	688.767 #
22) L5 AR-1248-2	5.691	4.875	632917	426773	339.749	335.924
23) L5 AR-1248-3	5.893	4.917	695368	510041	338.980	390.566
24) L5 AR-1248-4	6.294	5.086	130513	541202	56.409	341.748 #
25) L5 AR-1248-5	6.332	5.475	111318	74979	50.613	45.303
26) L6 AR-1254-1	6.267	5.435	522958	421079	189.978	159.215
27) L6 AR-1254-2	6.482	5.580	561455	376033	144.552	174.429
28) L6 AR-1254-3	6.849	5.994	323953	748808	78.565	204.533 #
29) L6 AR-1254-4	7.132	6.208	219963	97520	73.081	44.389 #
30) L6 AR-1254-5	7.548	6.621	1916206	1238412	508.866	390.637
31) L7 AR-1260-1	7.009	6.109	1270364	988332	495.041	494.072
32) L7 AR-1260-2	7.265	6.296	1490316	1219512	492.803	494.739
33) L7 AR-1260-3	7.622	6.448	1177762	1113339	488.890	496.311
34) L7 AR-1260-4	7.846	6.916	1293455	928161	493.834	498.738
35) L7 AR-1260-5	8.155	7.157	2426055	2225792	507.321	516.146
36) L8 AR-1262-1	7.622	6.658	1177762	1128208	251.823	270.291
37) L8 AR-1262-2	8.155	7.157	2426055	2225792	318.221	323.957
38) L8 AR-1262-3	8.464	7.437	1561002	559081	298.268	189.299 #
39) L8 AR-1262-4	8.516	7.501	1096389	1630176	256.820	312.857
40) L8 AR-1262-5	9.150	7.994	708247	592185	257.764	255.016
41) L9 AR-1268-1	8.464	7.437	1561002	559081	191.828	74.893 #

Data Path : Z:\pestpcbsrv\HPCHEM1\ECD_0\Data\P0052319\
 Data File : P0056525.D
 Signal(s) : Signal #1: ECD1A.CH Signal #2: ECD2B.CH
 Acq On : 23 May 2019 12:48
 Operator : SM/SJ
 Sample : AR1660CCC500
 Misc :
 ALS Vial : 3 Sample Multiplier: 1

Instrument :
 ECD_0
 ClientSampleId :
 AR1660CCC500

Integration File signal 1: autoint1.e
 Integration File signal 2: autoint2.e
 Quant Time: May 24 00:13:09 2019
 Quant Method : Z:\pestpcbsrv\HPCHEM1\ECD_0\methods\P0052319.M
 Quant Title : GC EXTRACTABLES
 QLast Update : Fri May 24 00:11:05 2019
 Response via : Initial Calibration
 Integrator: ChemStation 6890 Scale Mode: Small noise peaks clipped

Volume Inj. : 2 µl
 Signal #1 Phase : ZB-MR1 Signal #2 Phase: ZB-MR2
 Signal #1 Info : 30Mx0.32mmx 0.50µ Signal #2 Info : 30M x 0.32mm x 0.25µm

	Compound	RT#1	RT#2	Resp#1	Resp#2	ng/ml	ng/ml
42)	L9 AR-1268-2	8.516	7.501	1096389	1630176	135.527	233.447 #
43)	L9 AR-1268-3	0.000	7.704	0	29402	N.D.	4.954 #
44)	L9 AR-1268-4	9.150	7.994	708247	592185	259.709	253.694
45)	L9 AR-1268-5	9.531	8.271	226983	153252	10.828	8.855

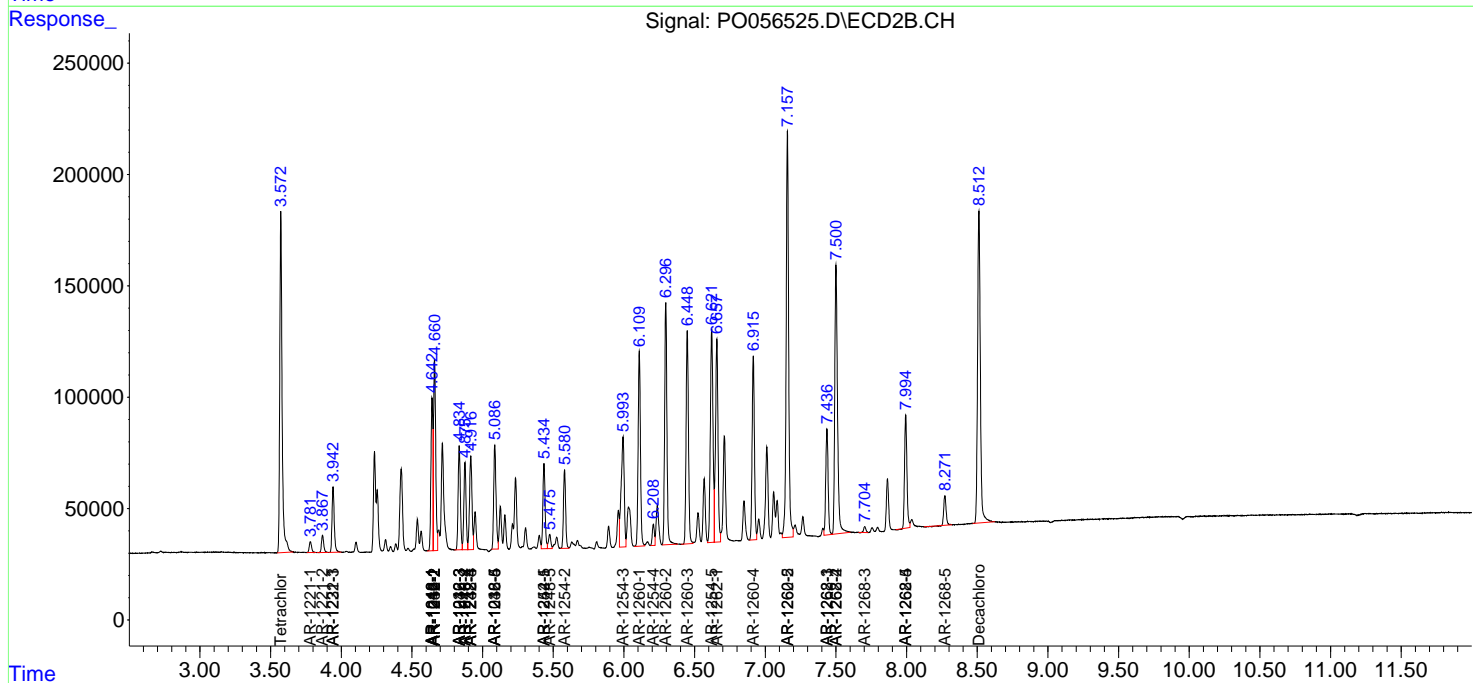
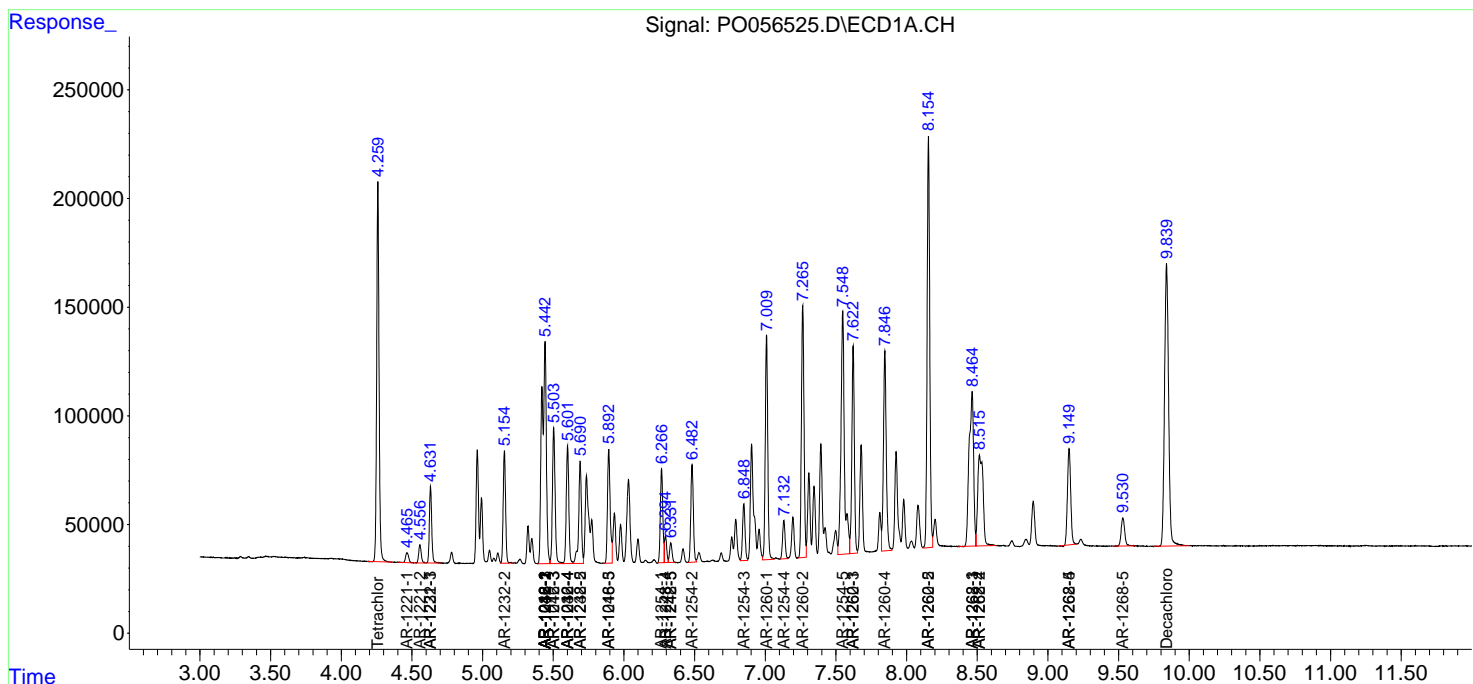
(f)=RT Delta > 1/2 Window (#)=Amounts differ by > 25% (m)=manual int.

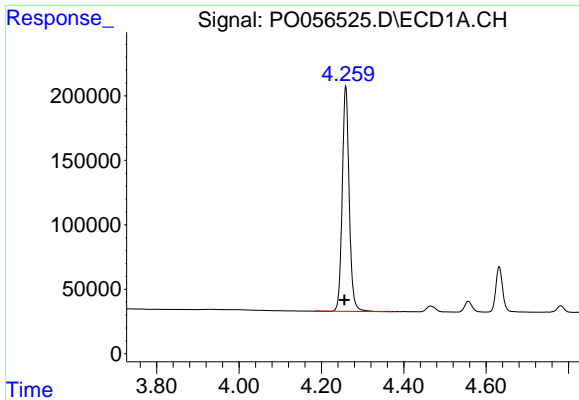
Data Path : Z:\pestpcbsrv\HPCHEM1\ECD_O\Data\P0052319\
 Data File : P0056525.D
 Signal(s) : Signal #1: ECD1A.CH Signal #2: ECD2B.CH
 Acq On : 23 May 2019 12:48
 Operator : SM/SJ
 Sample : AR1660CCC500
 Misc :
 ALS Vial : 3 Sample Multiplier: 1

Instrument :
 ECD_O
 ClientSampled :
 AR1660CCC500

Integration File signal 1: autoint1.e
 Integration File signal 2: autoint2.e
 Quant Time: May 24 00:13:09 2019
 Quant Method : Z:\pestpcbsrv\HPCHEM1\ECD_O\methods\P0052319.M
 Quant Title : GC EXTRACTABLES
 QLast Update : Fri May 24 00:11:05 2019
 Response via : Initial Calibration
 Integrator: ChemStation 6890 Scale Mode: Small noise peaks clipped

Volume Inj. : 2 µl
 Signal #1 Phase : ZB-MR1 Signal #2 Phase: ZB-MR2
 Signal #1 Info : 30Mx0.32mmx 0.50µ Signal #2 Info : 30M x 0.32mm x 0.25µm

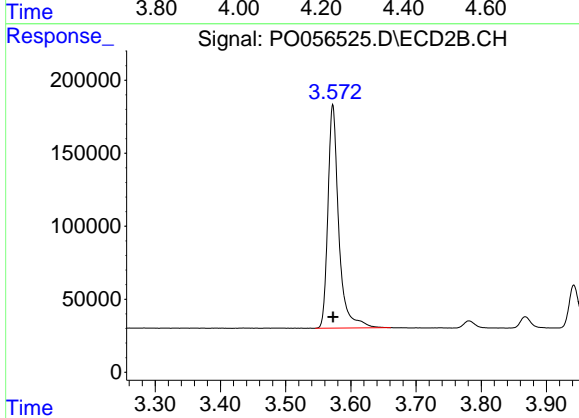




#1 Tetrachloro-m-xylene

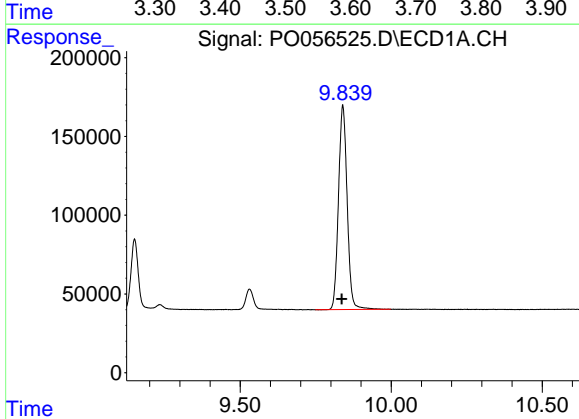
R.T.: 4.259 min
 Delta R.T.: 0.003 min
 Response: 2051643
 Conc: 53.59 ng/ml

Instrument :
 ECD_O
 ClientSampleId :
 AR1660CCC500



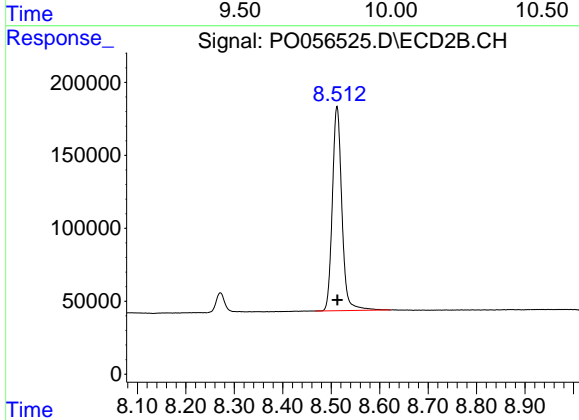
#1 Tetrachloro-m-xylene

R.T.: 3.572 min
 Delta R.T.: 0.000 min
 Response: 1771332
 Conc: 53.71 ng/ml



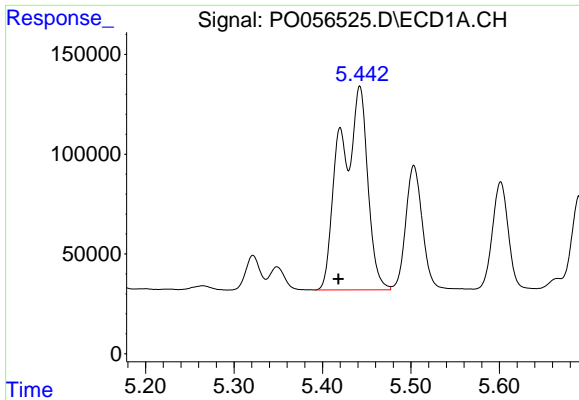
#2 Decachlorobiphenyl

R.T.: 9.840 min
 Delta R.T.: 0.003 min
 Response: 2594210
 Conc: 52.85 ng/ml



#2 Decachlorobiphenyl

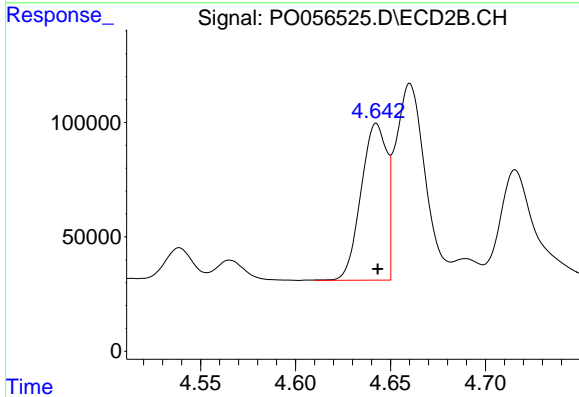
R.T.: 8.512 min
 Delta R.T.: 0.000 min
 Response: 1909405
 Conc: 53.55 ng/ml



#3 AR-1016-1

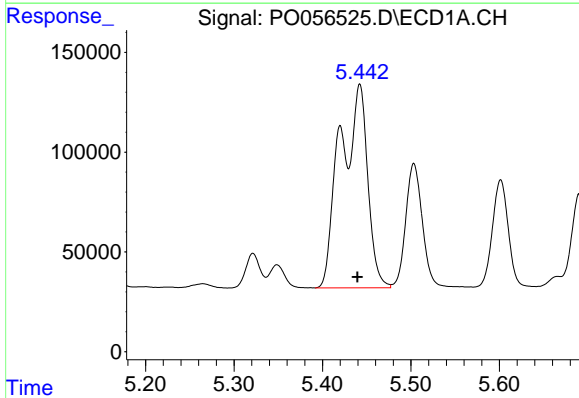
R.T.: 5.442 min
 Delta R.T.: 0.024 min
 Response: 2185796
 Conc: 1215.26 ng/ml

Instrument :
 ECD_O
 ClientSampleId :
 AR1660CCC500



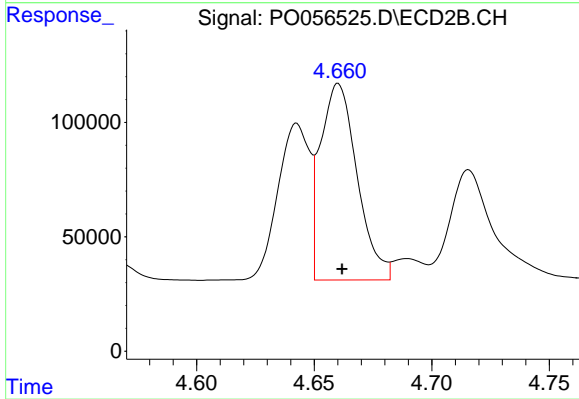
#3 AR-1016-1

R.T.: 4.643 min
 Delta R.T.: 0.000 min
 Response: 645043
 Conc: 512.55 ng/ml



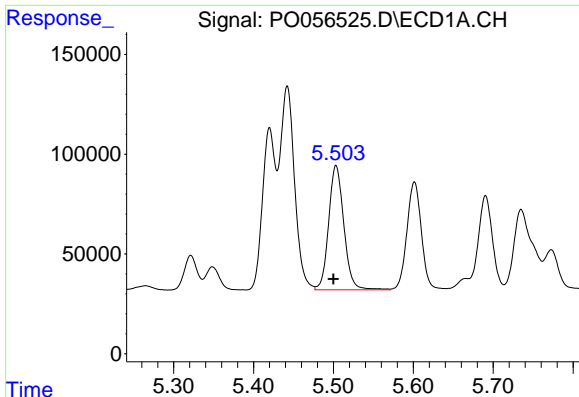
#4 AR-1016-2

R.T.: 5.442 min
 Delta R.T.: 0.002 min
 Response: 2185796
 Conc: 870.46 ng/ml



#4 AR-1016-2

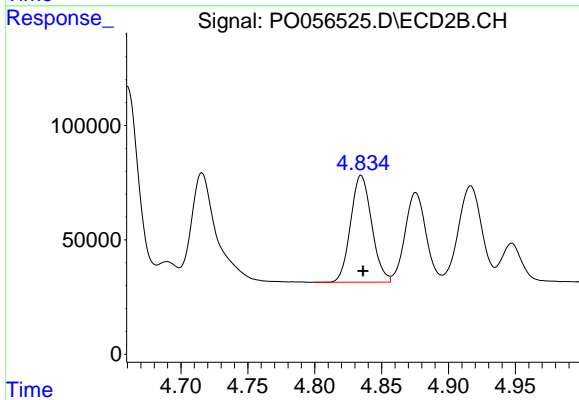
R.T.: 4.660 min
 Delta R.T.: -0.002 min
 Response: 933648
 Conc: 518.23 ng/ml



#5 AR-1016-3

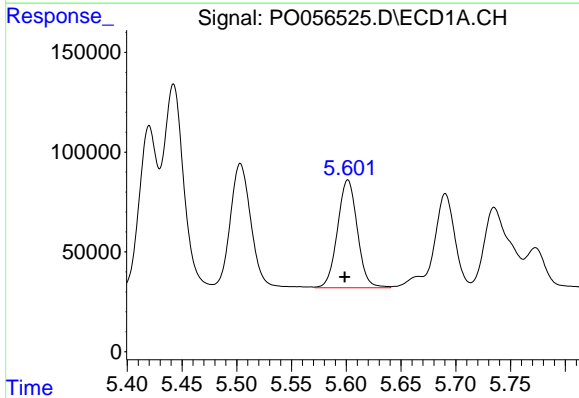
R.T.: 5.503 min
 Delta R.T.: 0.003 min
 Response: 823699
 Conc: 512.48 ng/ml

Instrument :
 ECD_O
 ClientSampleId :
 AR1660CCC500



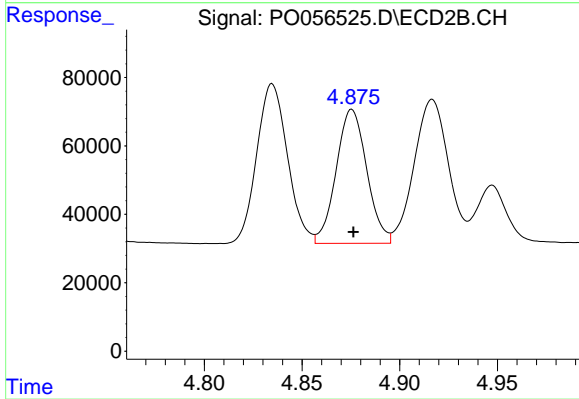
#5 AR-1016-3

R.T.: 4.835 min
 Delta R.T.: -0.001 min
 Response: 511787
 Conc: 519.08 ng/ml



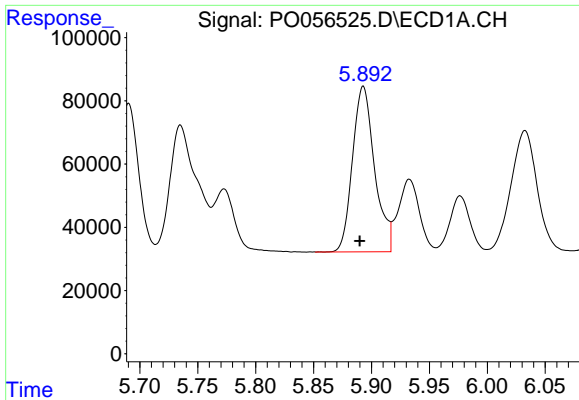
#6 AR-1016-4

R.T.: 5.601 min
 Delta R.T.: 0.003 min
 Response: 680231
 Conc: 518.55 ng/ml



#6 AR-1016-4

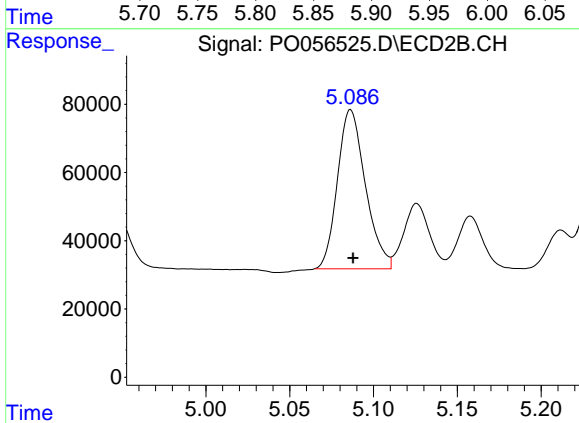
R.T.: 4.875 min
 Delta R.T.: 0.000 min
 Response: 426773
 Conc: 515.52 ng/ml



#7 AR-1016-5

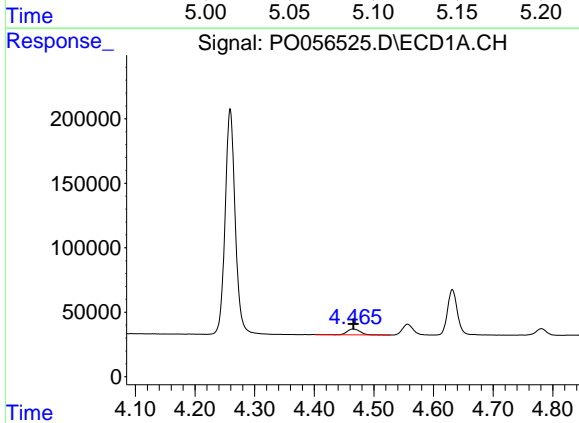
R.T.: 5.893 min
 Delta R.T.: 0.003 min
 Response: 695368
 Conc: 503.30 ng/ml

Instrument :
 ECD_O
 ClientSampleId :
 AR1660CCC500



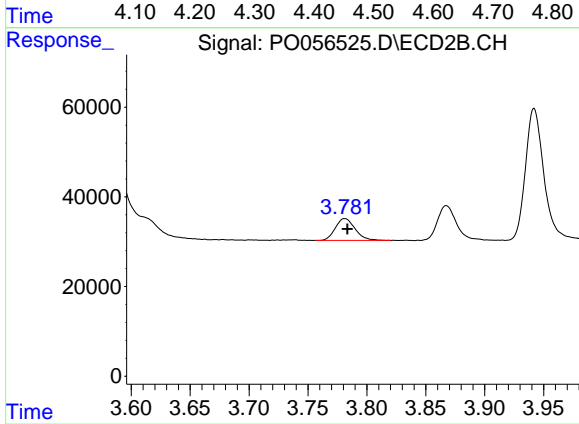
#7 AR-1016-5

R.T.: 5.086 min
 Delta R.T.: -0.002 min
 Response: 541202
 Conc: 504.51 ng/ml



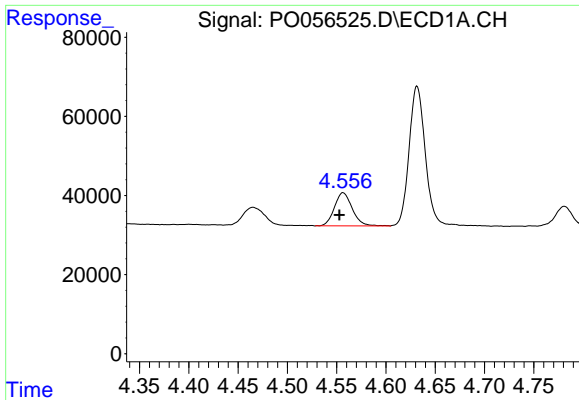
#8 AR-1221-1

R.T.: 4.465 min
 Delta R.T.: 0.000 min
 Response: 67835
 Conc: 107.38 ng/ml



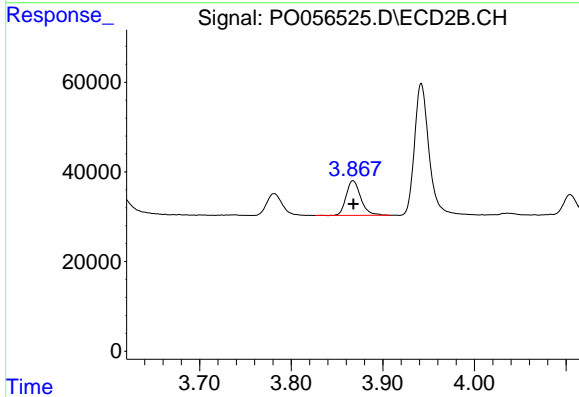
#8 AR-1221-1

R.T.: 3.781 min
 Delta R.T.: -0.002 min
 Response: 56794
 Conc: 111.99 ng/ml

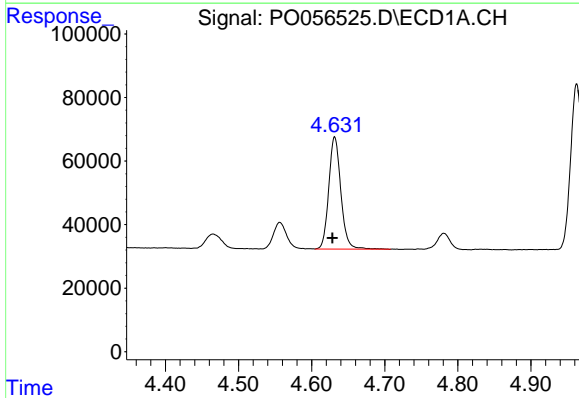


#9 AR-1221-2
 R.T.: 4.557 min
 Delta R.T.: 0.004 min
 Response: 105236
 Conc: 220.57 ng/ml

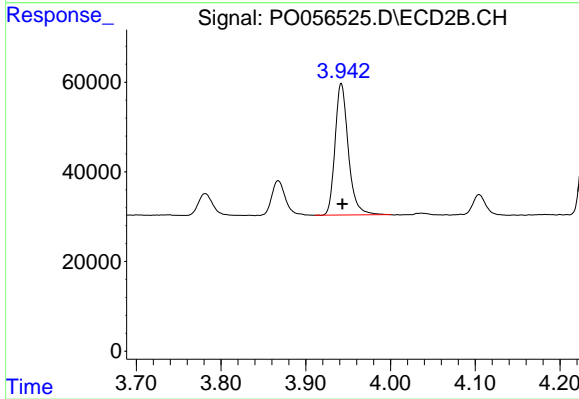
Instrument :
 ECD_O
 ClientSampleId :
 AR1660CCC500



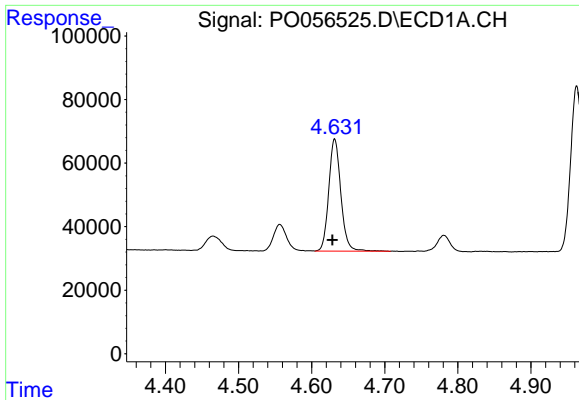
#9 AR-1221-2
 R.T.: 3.867 min
 Delta R.T.: 0.000 min
 Response: 85325
 Conc: 226.41 ng/ml



#10 AR-1221-3
 R.T.: 4.632 min
 Delta R.T.: 0.003 min
 Response: 406345
 Conc: 274.92 ng/ml

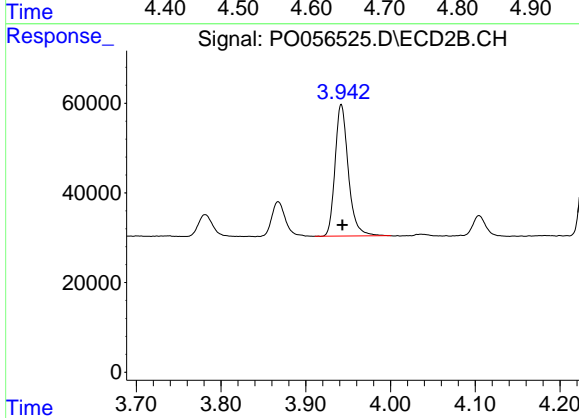


#10 AR-1221-3
 R.T.: 3.942 min
 Delta R.T.: -0.001 min
 Response: 319105
 Conc: 266.58 ng/ml

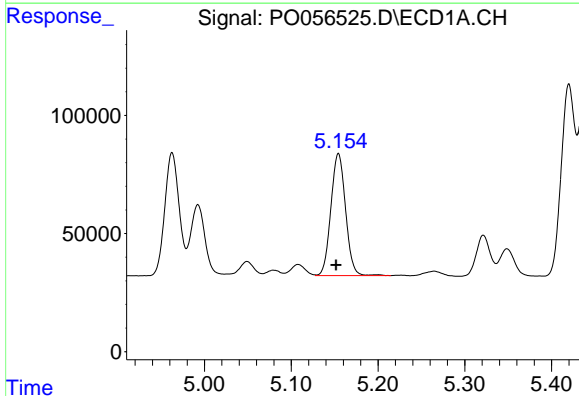


#11 AR-1232-1
 R.T.: 4.632 min
 Delta R.T.: 0.003 min
 Response: 406345
 Conc: 344.83 ng/ml

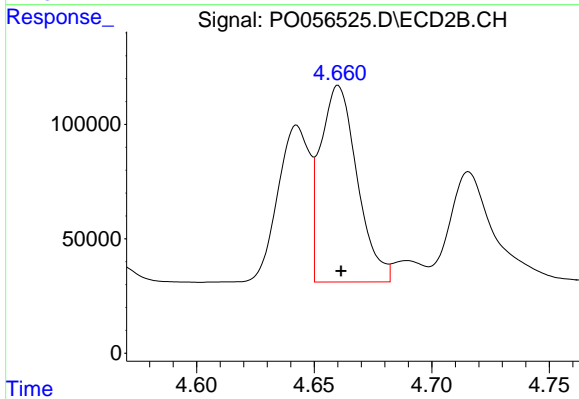
Instrument :
 ECD_O
ClientSampled :
 AR1660CCC500



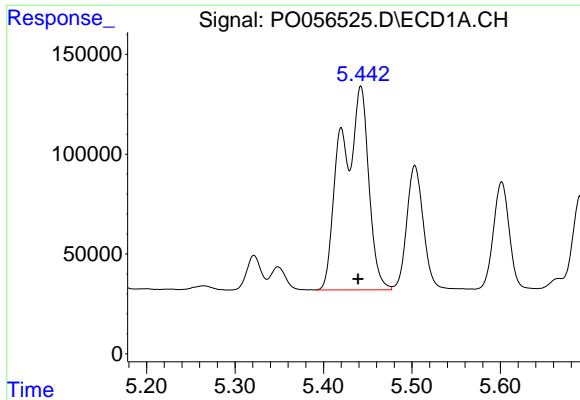
#11 AR-1232-1
 R.T.: 3.942 min
 Delta R.T.: -0.001 min
 Response: 319105
 Conc: 355.21 ng/ml



#12 AR-1232-2
 R.T.: 5.154 min
 Delta R.T.: 0.003 min
 Response: 606573
 Conc: 914.84 ng/ml



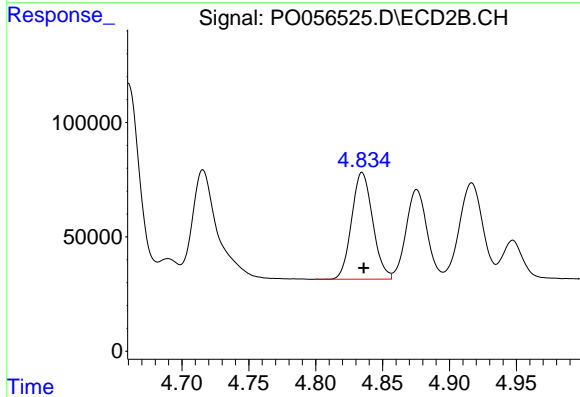
#12 AR-1232-2
 R.T.: 4.660 min
 Delta R.T.: -0.001 min
 Response: 933648
 Conc: 960.66 ng/ml



#13 AR-1232-3

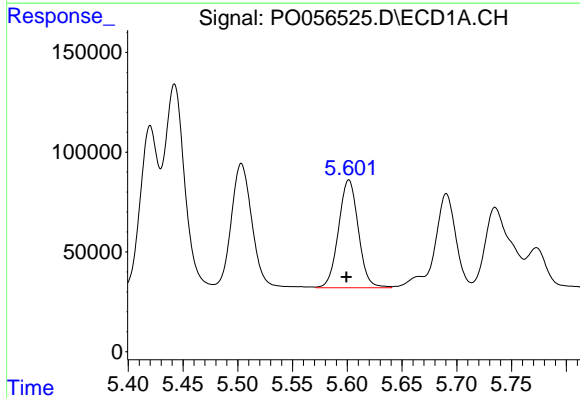
R.T.: 5.442 min
 Delta R.T.: 0.003 min
 Response: 2185796
 Conc: 1540.76 ng/ml

Instrument :
 ECD_O
 ClientSampleId :
 AR1660CCC500



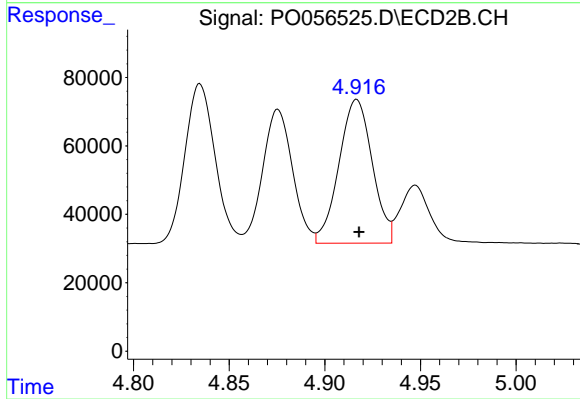
#13 AR-1232-3

R.T.: 4.835 min
 Delta R.T.: -0.001 min
 Response: 511787
 Conc: 978.01 ng/ml



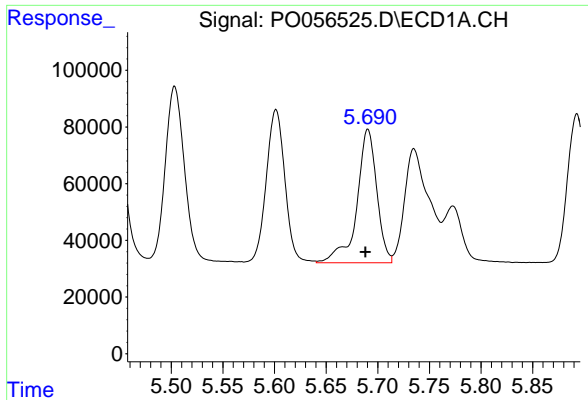
#14 AR-1232-4

R.T.: 5.601 min
 Delta R.T.: 0.002 min
 Response: 680231
 Conc: 966.34 ng/ml



#14 AR-1232-4

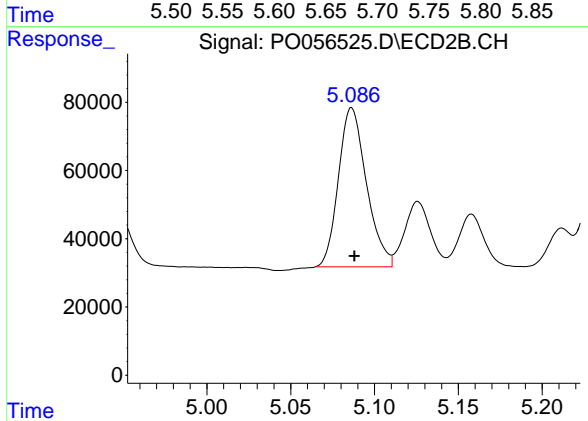
R.T.: 4.917 min
 Delta R.T.: -0.001 min
 Response: 510041
 Conc: 1035.22 ng/ml



#15 AR-1232-5

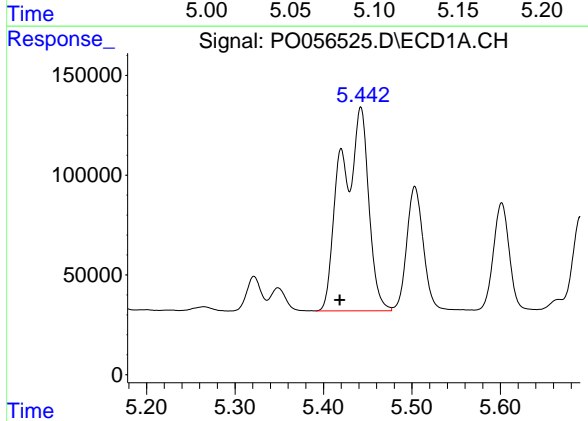
R.T.: 5.691 min
Delta R.T.: 0.002 min
Response: 632917
Conc: 1119.44 ng/ml

Instrument :
ECD_O
ClientSampleId :
AR1660CCC500



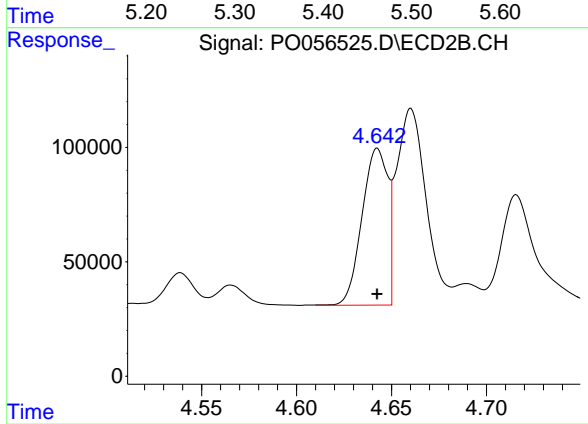
#15 AR-1232-5

R.T.: 5.086 min
Delta R.T.: -0.002 min
Response: 541202
Conc: 960.85 ng/ml



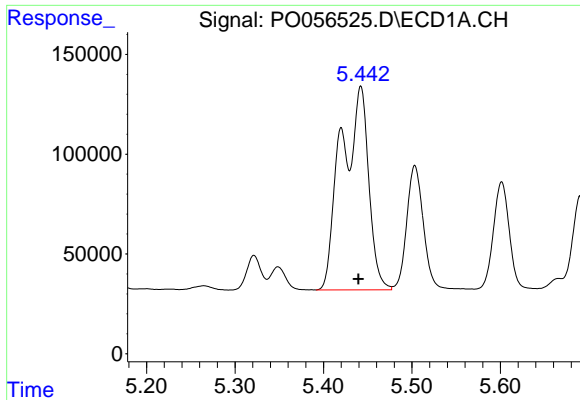
#16 AR-1242-1

R.T.: 5.442 min
Delta R.T.: 0.024 min
Response: 2185796
Conc: 1266.99 ng/ml



#16 AR-1242-1

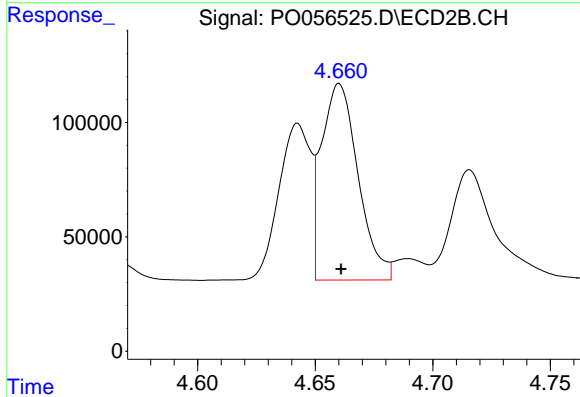
R.T.: 4.643 min
Delta R.T.: 0.000 min
Response: 645043
Conc: 520.79 ng/ml



#17 AR-1242-2

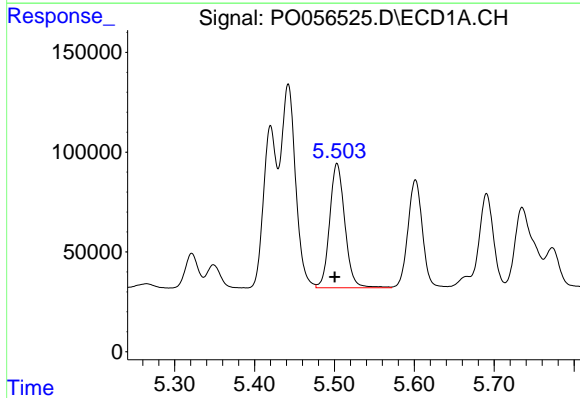
R.T.: 5.442 min
 Delta R.T.: 0.002 min
 Response: 2185796
 Conc: 860.97 ng/ml

Instrument :
 ECD_O
ClientSampleId :
 AR1660CCC500



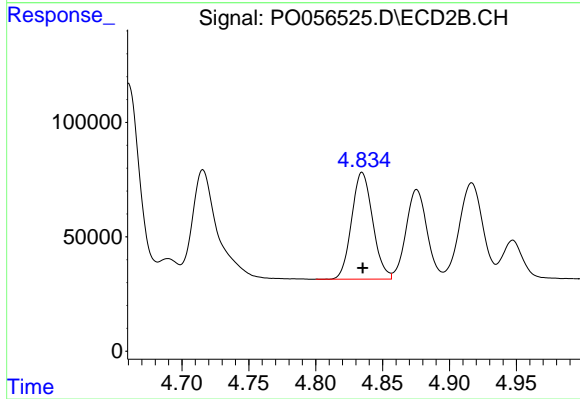
#17 AR-1242-2

R.T.: 4.660 min
 Delta R.T.: 0.000 min
 Response: 933648
 Conc: 519.15 ng/ml



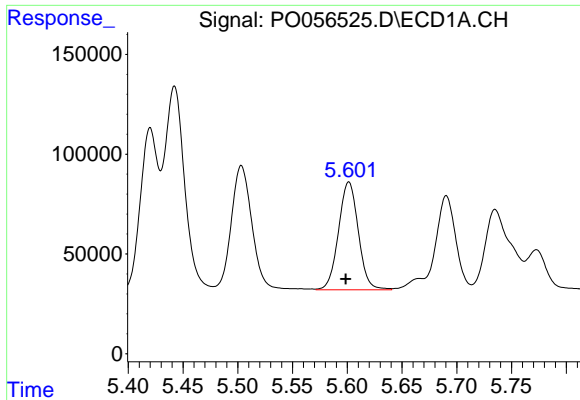
#18 AR-1242-3

R.T.: 5.503 min
 Delta R.T.: 0.003 min
 Response: 823699
 Conc: 506.58 ng/ml



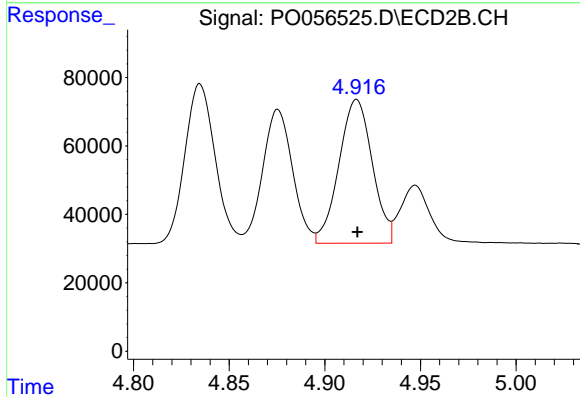
#18 AR-1242-3

R.T.: 4.835 min
 Delta R.T.: 0.000 min
 Response: 511787
 Conc: 520.58 ng/ml

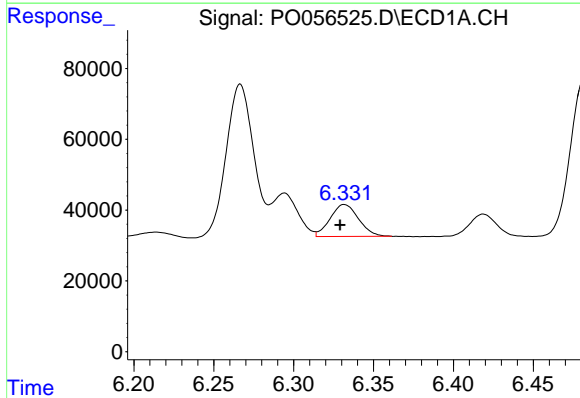


#19 AR-1242-4
 R.T.: 5.601 min
 Delta R.T.: 0.003 min
 Response: 680231
 Conc: 508.88 ng/ml

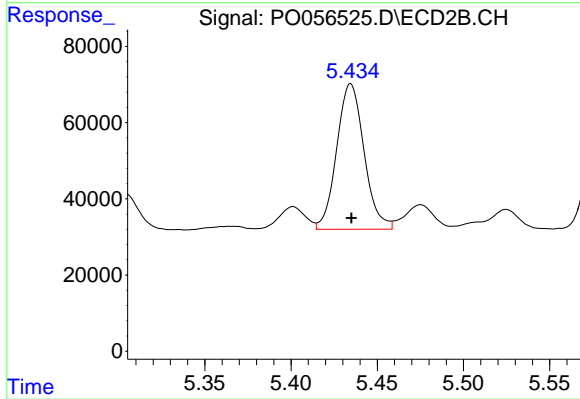
Instrument :
 ECD_O
 ClientSampled :
 AR1660CCC500



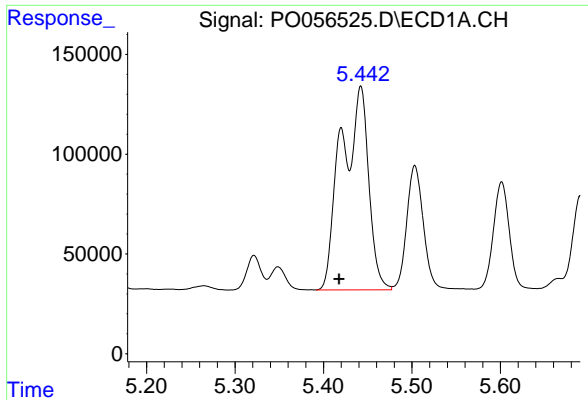
#19 AR-1242-4
 R.T.: 4.917 min
 Delta R.T.: 0.000 min
 Response: 510041
 Conc: 524.14 ng/ml



#20 AR-1242-5
 R.T.: 6.332 min
 Delta R.T.: 0.003 min
 Response: 111318
 Conc: 67.46 ng/ml



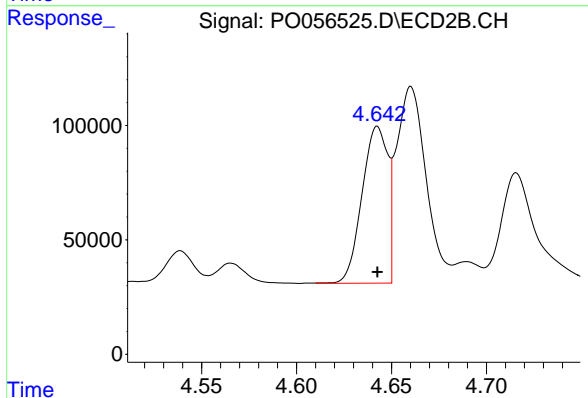
#20 AR-1242-5
 R.T.: 5.435 min
 Delta R.T.: 0.000 min
 Response: 421079
 Conc: 356.16 ng/ml



#21 AR-1248-1

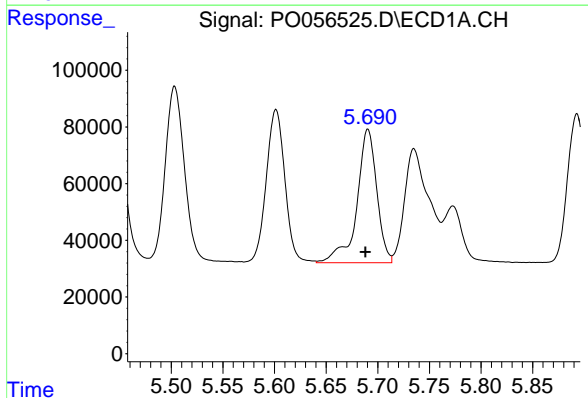
R.T.: 5.442 min
Delta R.T.: 0.025 min
Response: 2185796
Conc: 1696.37 ng/ml

Instrument :
ECD_O
ClientSampled :
AR1660CCC500



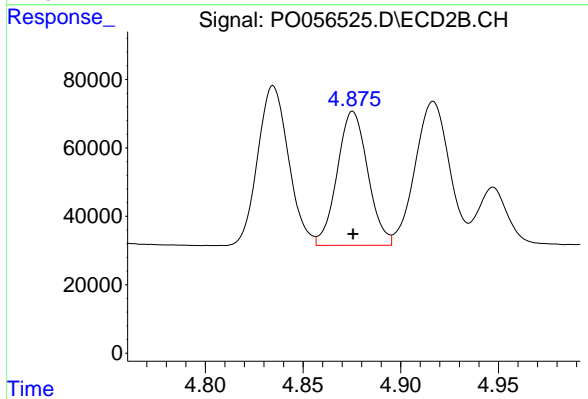
#21 AR-1248-1

R.T.: 4.643 min
Delta R.T.: 0.000 min
Response: 645043
Conc: 688.77 ng/ml



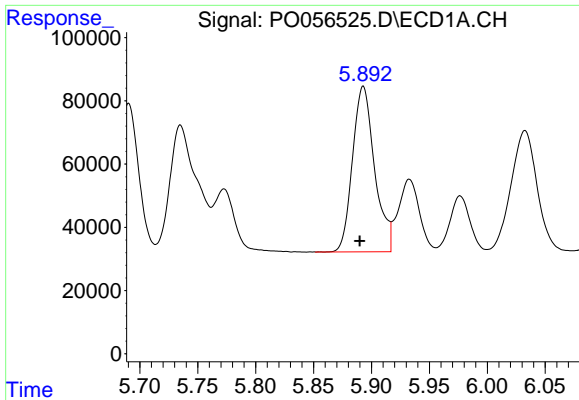
#22 AR-1248-2

R.T.: 5.691 min
Delta R.T.: 0.003 min
Response: 632917
Conc: 339.75 ng/ml



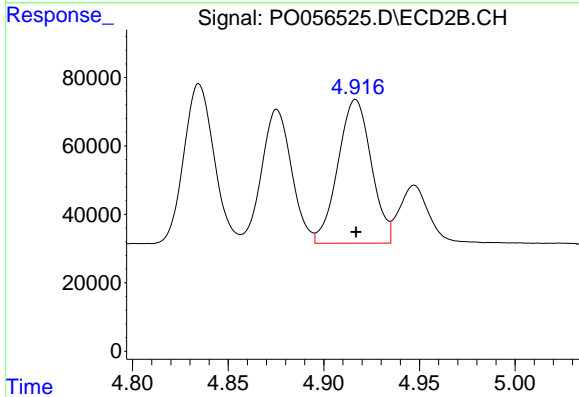
#22 AR-1248-2

R.T.: 4.875 min
Delta R.T.: 0.000 min
Response: 426773
Conc: 335.92 ng/ml

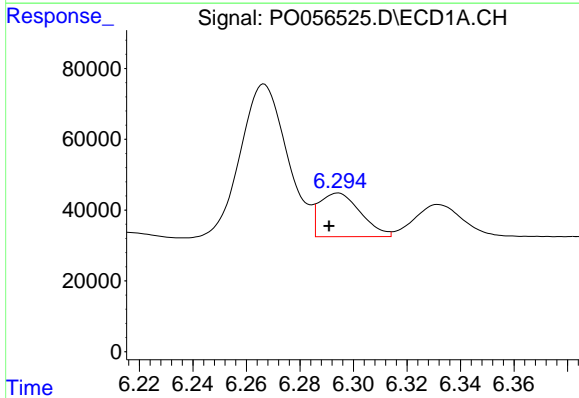


#23 AR-1248-3
 R.T.: 5.893 min
 Delta R.T.: 0.003 min
 Response: 695368
 Conc: 338.98 ng/ml

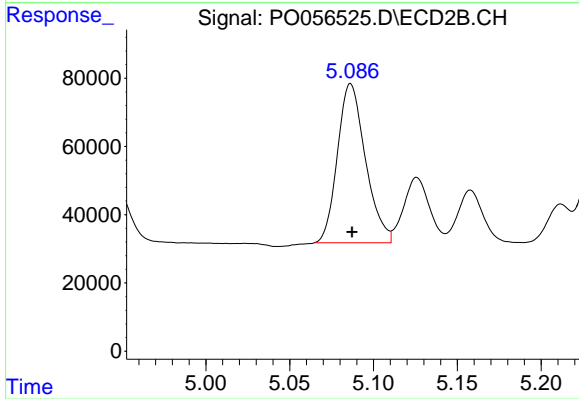
Instrument :
 ECD_O
ClientSampled :
 AR1660CCC500



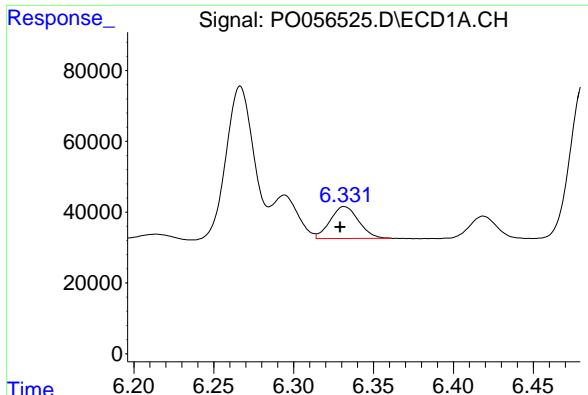
#23 AR-1248-3
 R.T.: 4.917 min
 Delta R.T.: 0.000 min
 Response: 510041
 Conc: 390.57 ng/ml



#24 AR-1248-4
 R.T.: 6.294 min
 Delta R.T.: 0.003 min
 Response: 130513
 Conc: 56.41 ng/ml



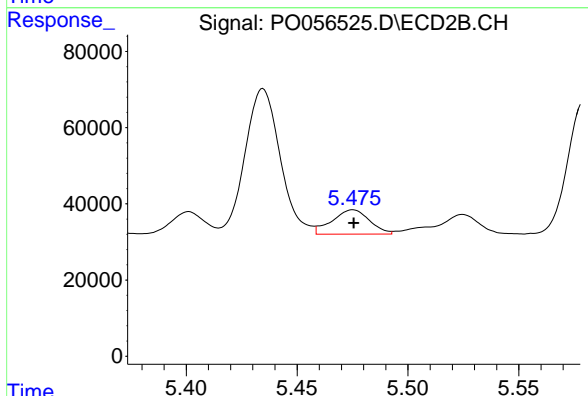
#24 AR-1248-4
 R.T.: 5.086 min
 Delta R.T.: 0.000 min
 Response: 541202
 Conc: 341.75 ng/ml



#25 AR-1248-5

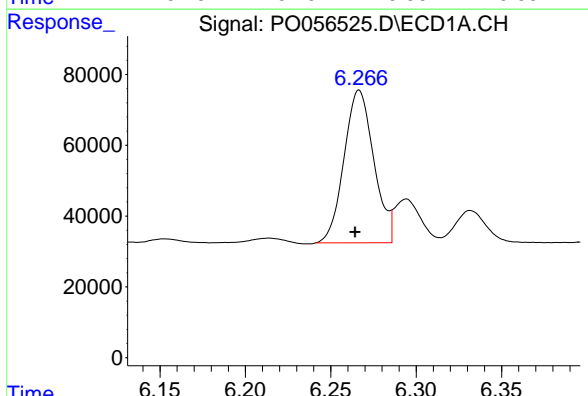
R.T.: 6.332 min
 Delta R.T.: 0.003 min
 Response: 111318
 Conc: 50.61 ng/ml

Instrument :
 ECD_O
 ClientSampleId :
 AR1660CCC500



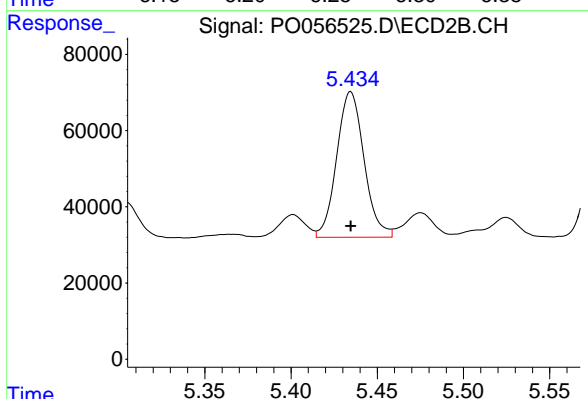
#25 AR-1248-5

R.T.: 5.475 min
 Delta R.T.: 0.000 min
 Response: 74979
 Conc: 45.30 ng/ml



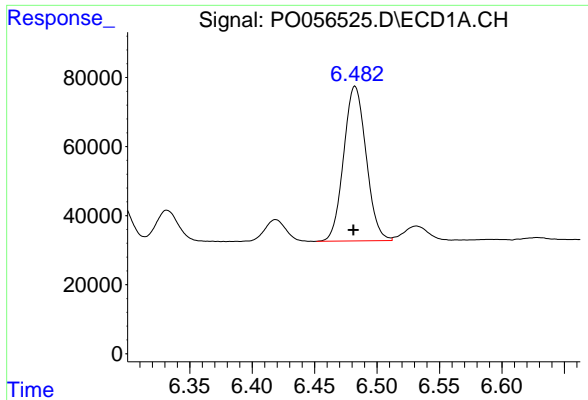
#26 AR-1254-1

R.T.: 6.267 min
 Delta R.T.: 0.002 min
 Response: 522958
 Conc: 189.98 ng/ml



#26 AR-1254-1

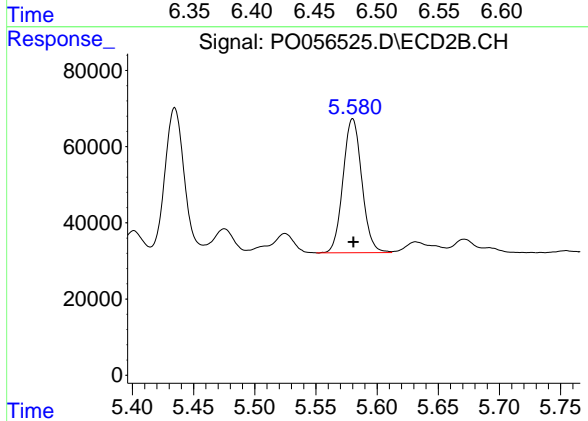
R.T.: 5.435 min
 Delta R.T.: 0.000 min
 Response: 421079
 Conc: 159.21 ng/ml



#27 AR-1254-2

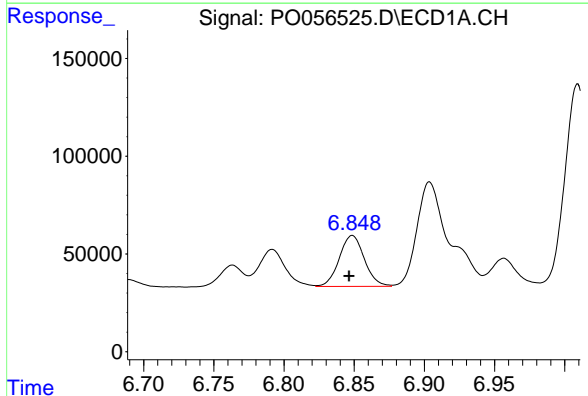
R.T.: 6.482 min
 Delta R.T.: 0.001 min
 Response: 561455
 Conc: 144.55 ng/ml

Instrument :
 ECD_O
 ClientSampleId :
 AR1660CCC500



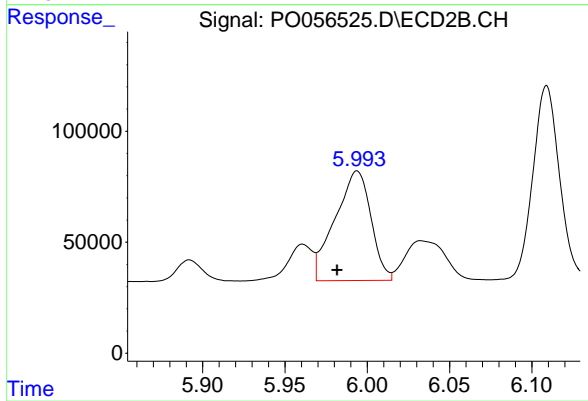
#27 AR-1254-2

R.T.: 5.580 min
 Delta R.T.: 0.000 min
 Response: 376033
 Conc: 174.43 ng/ml



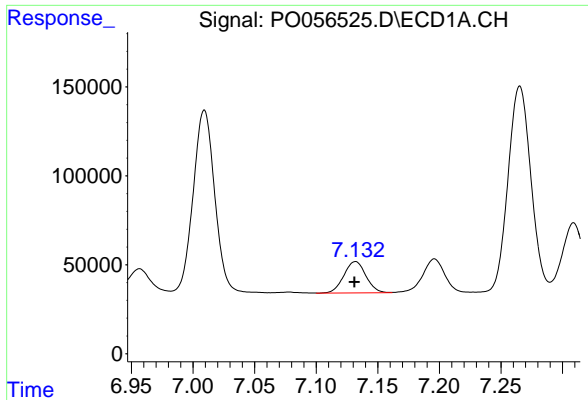
#28 AR-1254-3

R.T.: 6.849 min
 Delta R.T.: 0.002 min
 Response: 323953
 Conc: 78.56 ng/ml



#28 AR-1254-3

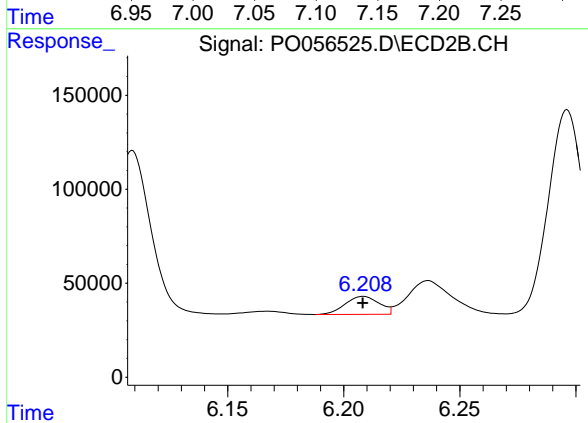
R.T.: 5.994 min
 Delta R.T.: 0.012 min
 Response: 748808
 Conc: 204.53 ng/ml



#29 AR-1254-4

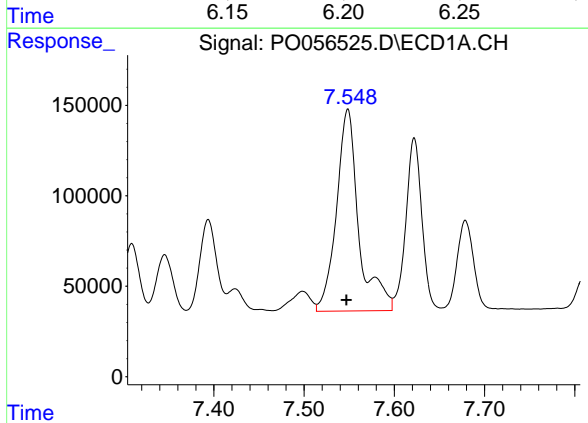
R.T.: 7.132 min
 Delta R.T.: 0.000 min
 Response: 219963
 Conc: 73.08 ng/ml

Instrument :
 ECD_O
 ClientSampleId :
 AR1660CCC500



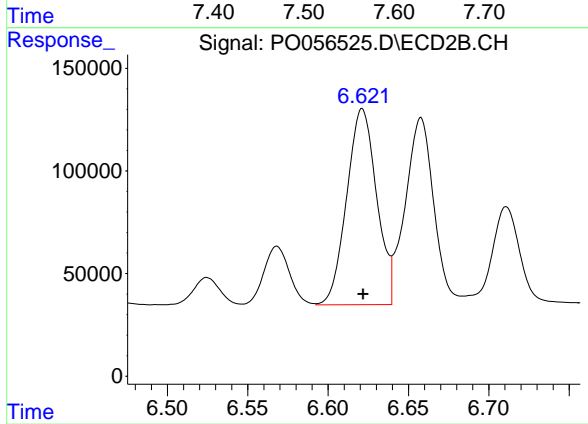
#29 AR-1254-4

R.T.: 6.208 min
 Delta R.T.: 0.000 min
 Response: 97520
 Conc: 44.39 ng/ml



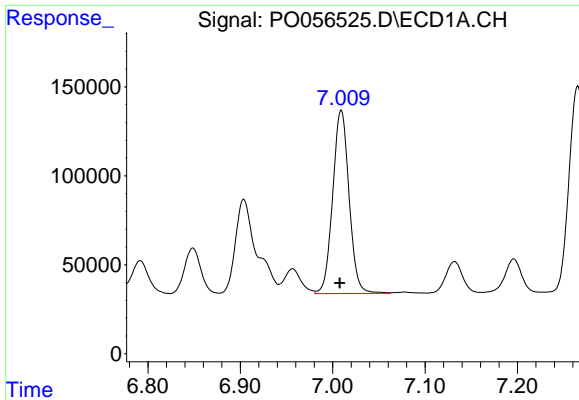
#30 AR-1254-5

R.T.: 7.548 min
 Delta R.T.: 0.001 min
 Response: 1916206
 Conc: 508.87 ng/ml



#30 AR-1254-5

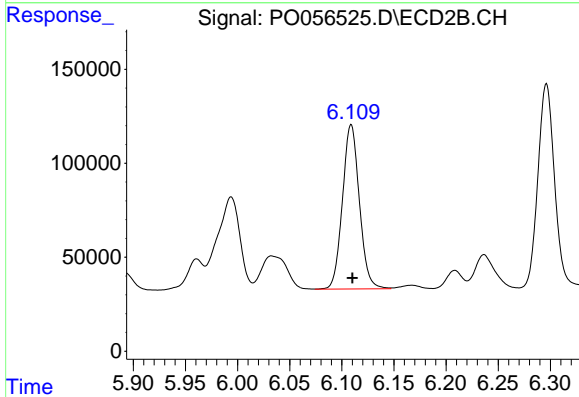
R.T.: 6.621 min
 Delta R.T.: 0.000 min
 Response: 1238412
 Conc: 390.64 ng/ml



#31 AR-1260-1

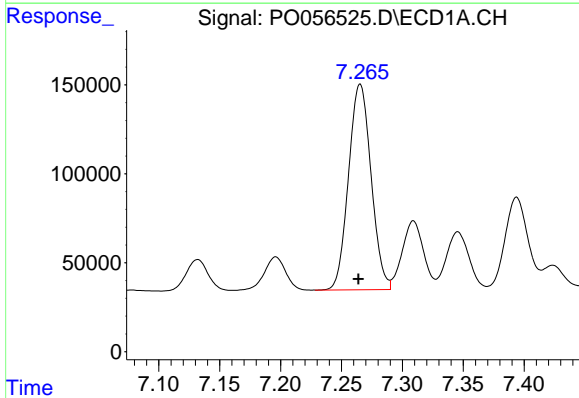
R.T.: 7.009 min
 Delta R.T.: 0.002 min
 Response: 1270364
 Conc: 495.04 ng/ml

Instrument :
 ECD_O
 ClientSampleId :
 AR1660CCC500



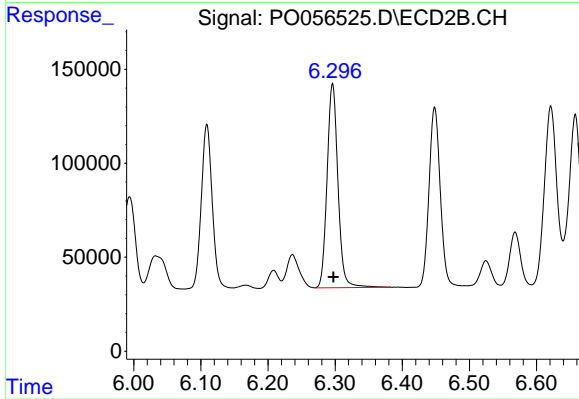
#31 AR-1260-1

R.T.: 6.109 min
 Delta R.T.: -0.001 min
 Response: 988332
 Conc: 494.07 ng/ml



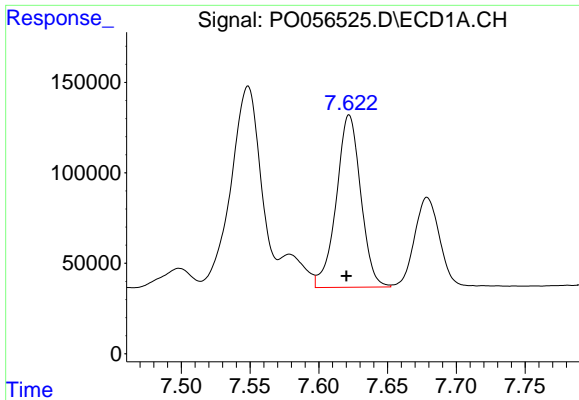
#32 AR-1260-2

R.T.: 7.265 min
 Delta R.T.: 0.002 min
 Response: 1490316
 Conc: 492.80 ng/ml



#32 AR-1260-2

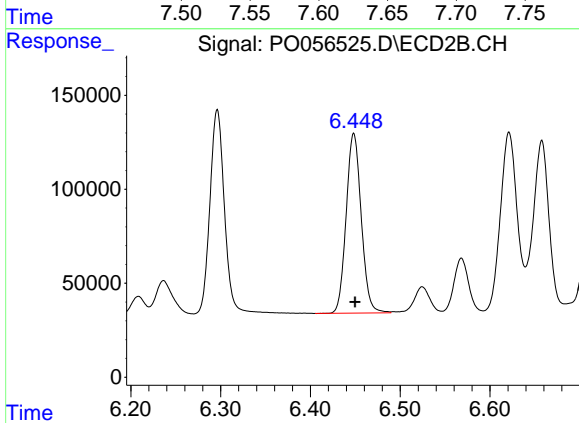
R.T.: 6.296 min
 Delta R.T.: -0.001 min
 Response: 1219512
 Conc: 494.74 ng/ml



#33 AR-1260-3

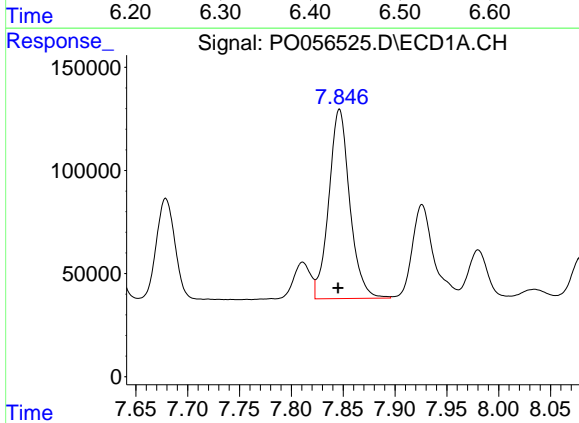
R.T.: 7.622 min
 Delta R.T.: 0.002 min
 Response: 1177762
 Conc: 488.89 ng/ml

Instrument :
 ECD_O
 ClientSampleId :
 AR1660CCC500



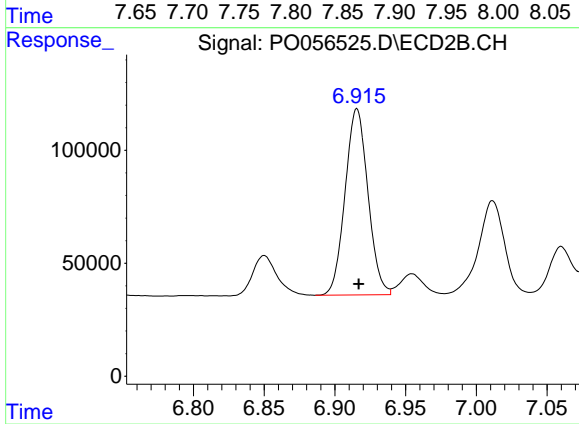
#33 AR-1260-3

R.T.: 6.448 min
 Delta R.T.: -0.002 min
 Response: 1113339
 Conc: 496.31 ng/ml



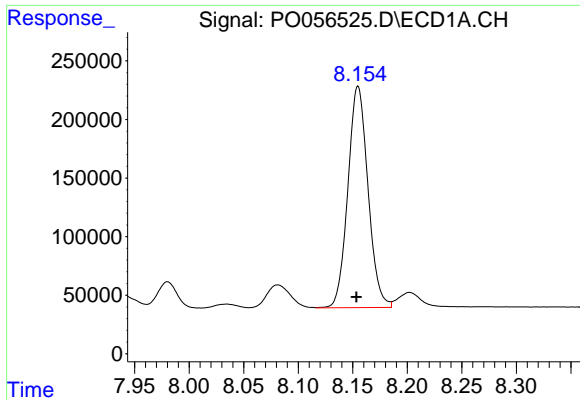
#34 AR-1260-4

R.T.: 7.846 min
 Delta R.T.: 0.001 min
 Response: 1293455
 Conc: 493.83 ng/ml



#34 AR-1260-4

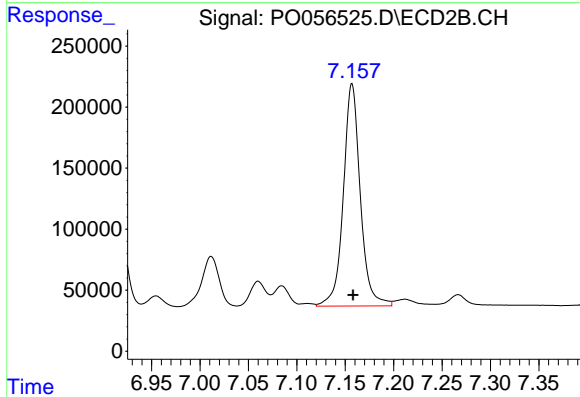
R.T.: 6.916 min
 Delta R.T.: -0.001 min
 Response: 928161
 Conc: 498.74 ng/ml



#35 AR-1260-5

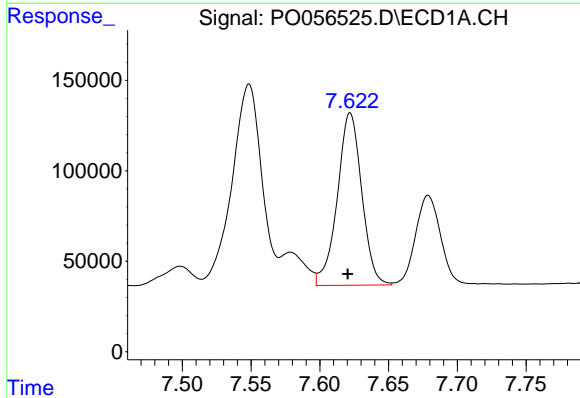
R.T.: 8.155 min
 Delta R.T.: 0.002 min
 Response: 2426055
 Conc: 507.32 ng/ml

Instrument :
 ECD_O
 ClientSampleId :
 AR1660CCC500



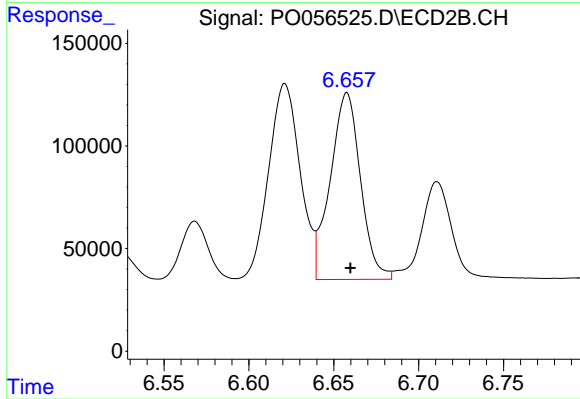
#35 AR-1260-5

R.T.: 7.157 min
 Delta R.T.: -0.001 min
 Response: 2225792
 Conc: 516.15 ng/ml



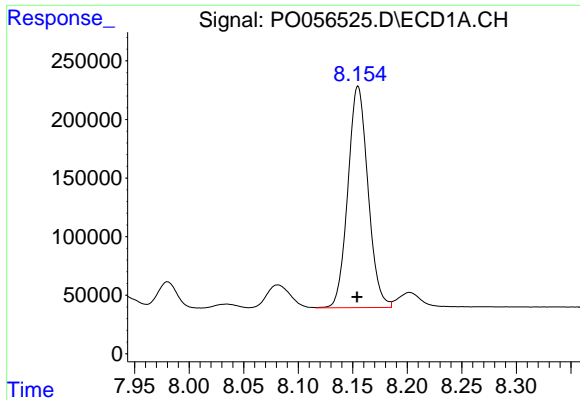
#36 AR-1262-1

R.T.: 7.622 min
 Delta R.T.: 0.002 min
 Response: 1177762
 Conc: 251.82 ng/ml



#36 AR-1262-1

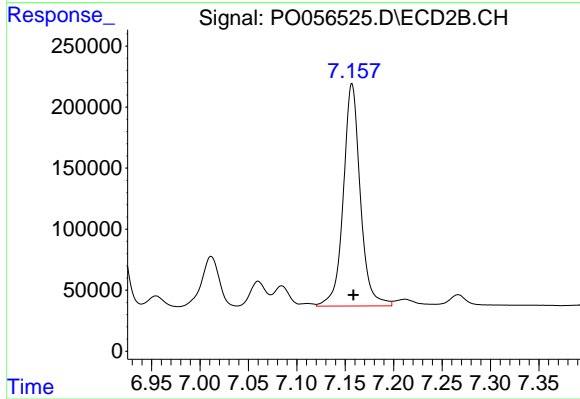
R.T.: 6.658 min
 Delta R.T.: -0.002 min
 Response: 1128208
 Conc: 270.29 ng/ml



#37 AR-1262-2

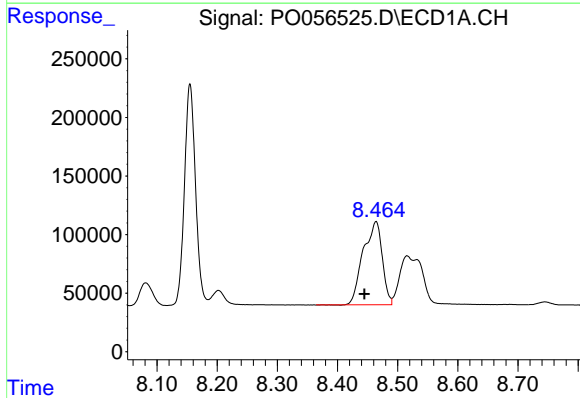
R.T.: 8.155 min
 Delta R.T.: 0.000 min
 Response: 2426055
 Conc: 318.22 ng/ml

Instrument :
 ECD_O
 ClientSampleId :
 AR1660CCC500



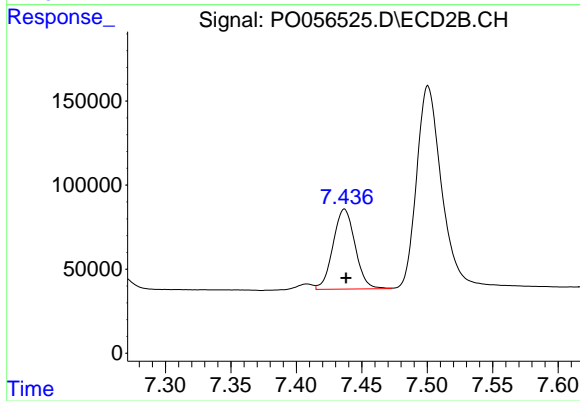
#37 AR-1262-2

R.T.: 7.157 min
 Delta R.T.: -0.001 min
 Response: 2225792
 Conc: 323.96 ng/ml



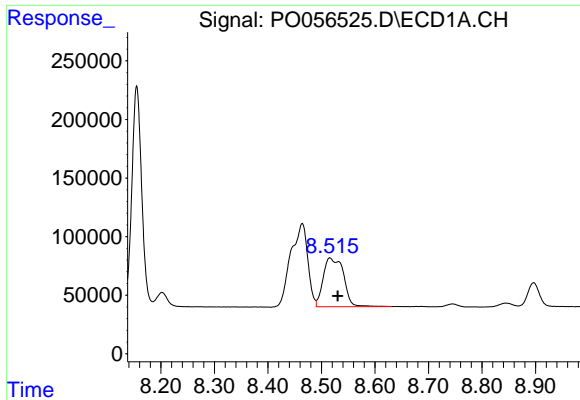
#38 AR-1262-3

R.T.: 8.464 min
 Delta R.T.: 0.019 min
 Response: 1561002
 Conc: 298.27 ng/ml



#38 AR-1262-3

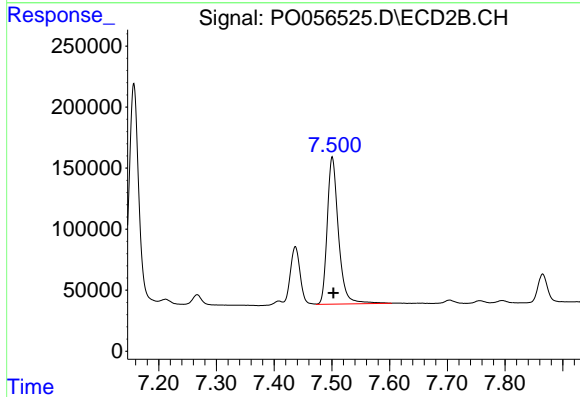
R.T.: 7.437 min
 Delta R.T.: -0.001 min
 Response: 559081
 Conc: 189.30 ng/ml



#39 AR-1262-4

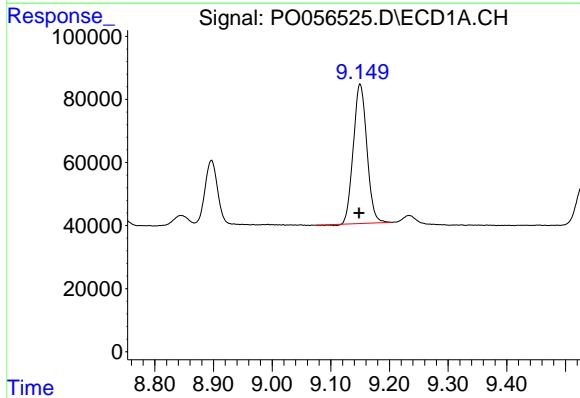
R.T.: 8.516 min
 Delta R.T.: -0.014 min
 Response: 1096389
 Conc: 256.82 ng/ml

Instrument :
 ECD_O
 ClientSampleId :
 AR1660CCC500



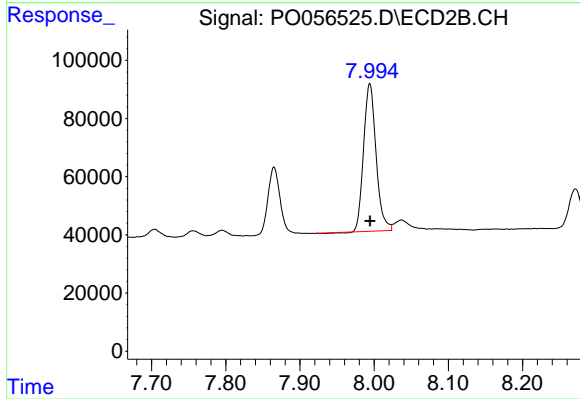
#39 AR-1262-4

R.T.: 7.501 min
 Delta R.T.: -0.002 min
 Response: 1630176
 Conc: 312.86 ng/ml



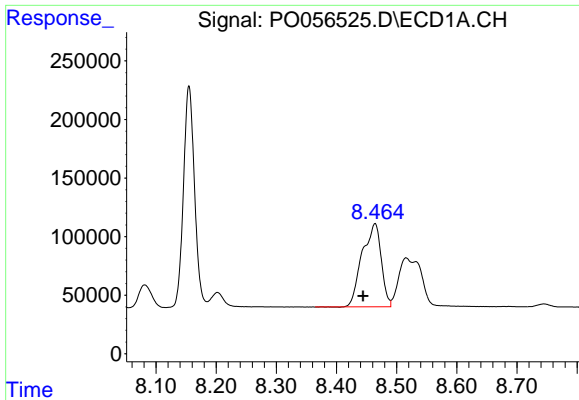
#40 AR-1262-5

R.T.: 9.150 min
 Delta R.T.: 0.002 min
 Response: 708247
 Conc: 257.76 ng/ml



#40 AR-1262-5

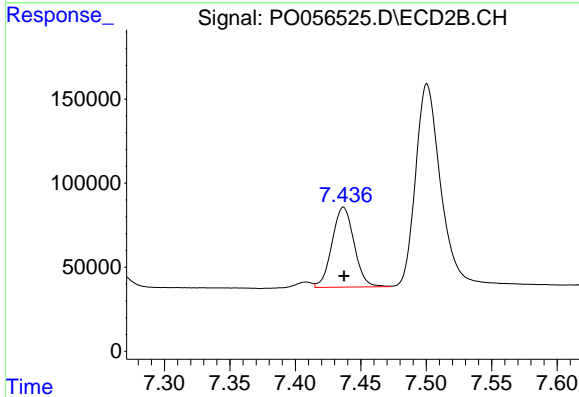
R.T.: 7.994 min
 Delta R.T.: 0.000 min
 Response: 592185
 Conc: 255.02 ng/ml



#41 AR-1268-1

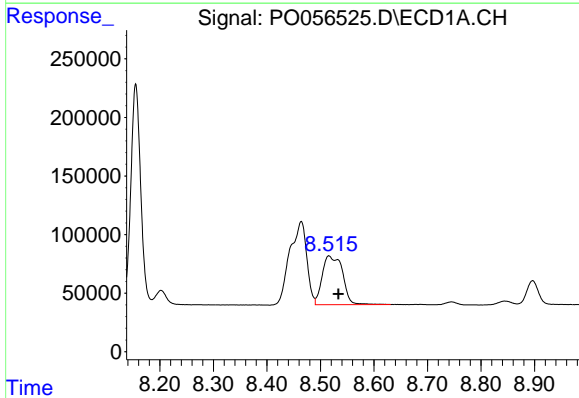
R.T.: 8.464 min
 Delta R.T.: 0.020 min
 Response: 1561002
 Conc: 191.83 ng/ml

Instrument :
 ECD_O
 ClientSampleId :
 AR1660CCC500



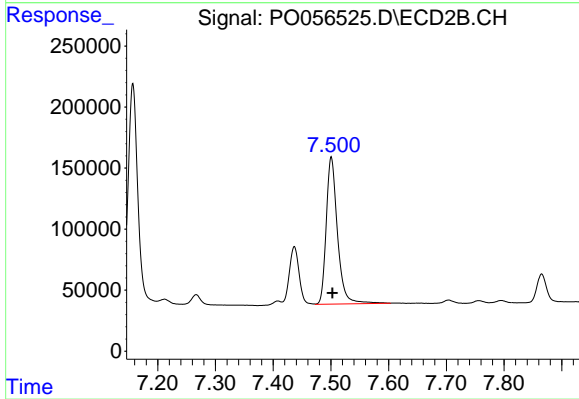
#41 AR-1268-1

R.T.: 7.437 min
 Delta R.T.: 0.000 min
 Response: 559081
 Conc: 74.89 ng/ml



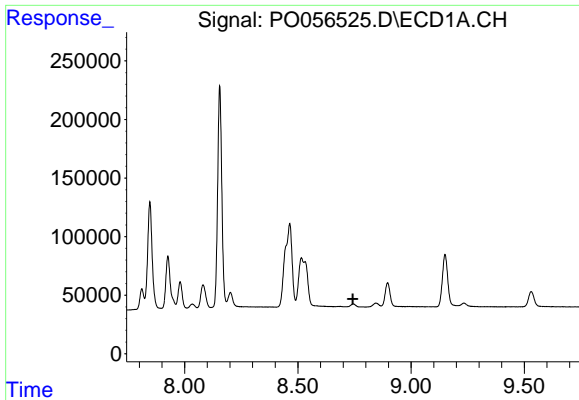
#42 AR-1268-2

R.T.: 8.516 min
 Delta R.T.: -0.017 min
 Response: 1096389
 Conc: 135.53 ng/ml



#42 AR-1268-2

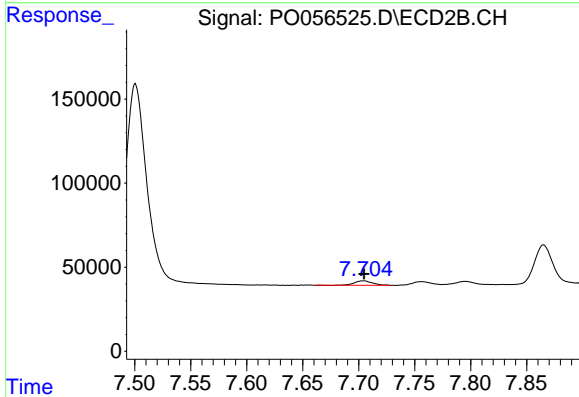
R.T.: 7.501 min
 Delta R.T.: -0.002 min
 Response: 1630176
 Conc: 233.45 ng/ml



#43 AR-1268-3

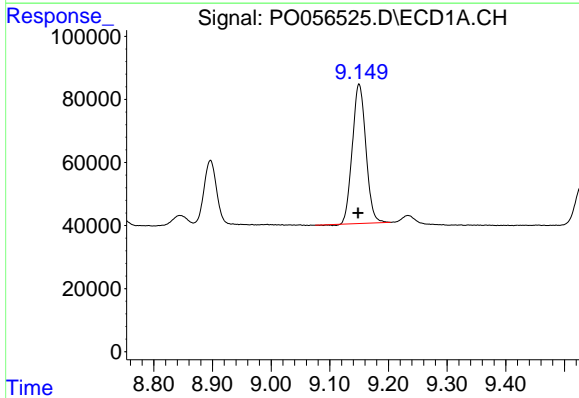
R.T.: 0.000 min
 Exp R.T.: 8.743 min
 Response: 0
 Conc: N.D.

Instrument :
 ECD_O
 ClientSampleId :
 AR1660CCC500



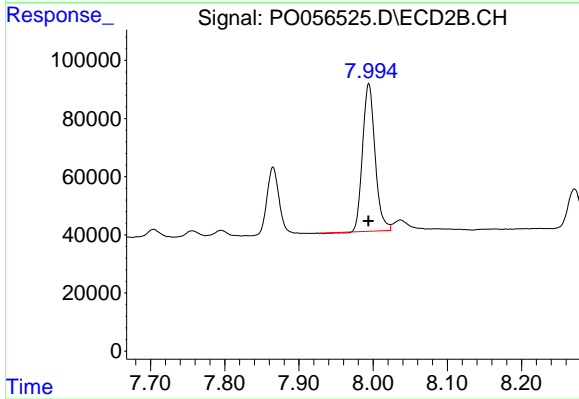
#43 AR-1268-3

R.T.: 7.704 min
 Delta R.T.: 0.000 min
 Response: 29402
 Conc: 4.95 ng/ml



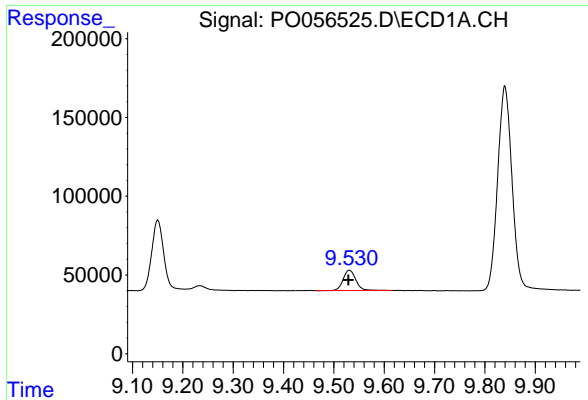
#44 AR-1268-4

R.T.: 9.150 min
 Delta R.T.: 0.002 min
 Response: 708247
 Conc: 259.71 ng/ml



#44 AR-1268-4

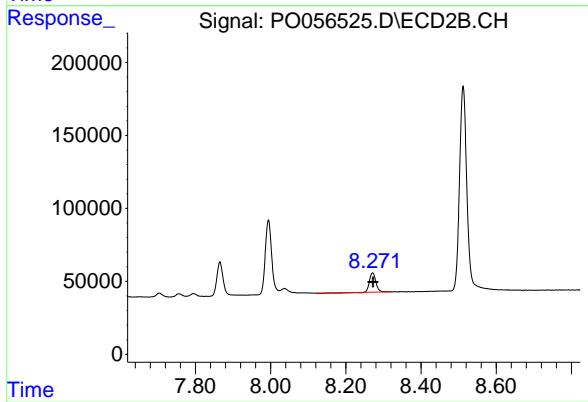
R.T.: 7.994 min
 Delta R.T.: 0.000 min
 Response: 592185
 Conc: 253.69 ng/ml



#45 AR-1268-5

R.T.: 9.531 min
Delta R.T.: 0.002 min
Response: 226983
Conc: 10.83 ng/ml

Instrument :
ECD_O
ClientSampleId :
AR1660CCC500



#45 AR-1268-5

R.T.: 8.271 min
Delta R.T.: 0.000 min
Response: 153252
Conc: 8.85 ng/ml