

Data Path : P:\HPCHEM1\ECD_D\Data\PD052418\
 Data File : PD047869.D
 Signal(s) : Signal #1: ECD1A.CH Signal #2: ECD2B.CH
 Acq On : 24 May 2018 18:02
 Operator : UA/AJ
 Sample : LOD TOX
 Misc : ECD_D LOD TOX WATER 50 PPB
 ALS Vial : 14 Sample Multiplier: 1

Instrument :
 ECD_O
 ClientSampleId :
 LOD TOX

Integration File signal 1: autoint1.e
 Integration File signal 2: autoint2.e
 Quant Time: May 25 05:45:53 2018
 Quant Method : P:\HPCHEM1\ECD_D\Method\DTX052418.M
 Quant Title : GC Extractables
 QLast Update : Thu May 24 13:37:08 2018
 Response via : Initial Calibration
 Integrator: ChemStation 6890 Scale Mode: Large solvent peaks clipped

Volume Inj. : 1 µl
 Signal #1 Phase : ZB-MR2 Signal #2 Phase: ZB-MR1
 Signal #1 Info : 30M x 0.32mm x0.2 Signal #2 Info : 30M x 0.32mm x 0.50µm

Compound	RT#1	RT#2	Resp#1	Resp#2	ng/ml	ng/ml

System Monitoring Compounds						
1) SA Tetrachlo...	3.424	4.039	19187596	313.7E6	16.676	17.287
7) SA Decachlor...	8.145	9.115	23913346	324.8E6	17.206	18.970
Target Compounds						
2) Toxaphene-1	0.000	6.427	0	4589974	N.D.	42.676 #
3) Toxaphene-2	6.259	7.122	1470688	4396973	58.608	22.087 #
4) Toxaphene-3	0.000	7.198	0	22787045	N.D.	44.457 #
5) Toxaphene-4	0.000	7.285	0	15225545	N.D.	44.306 #
6) Toxaphene-5	6.989	7.692	1089842	11099734	34.582	48.462 #

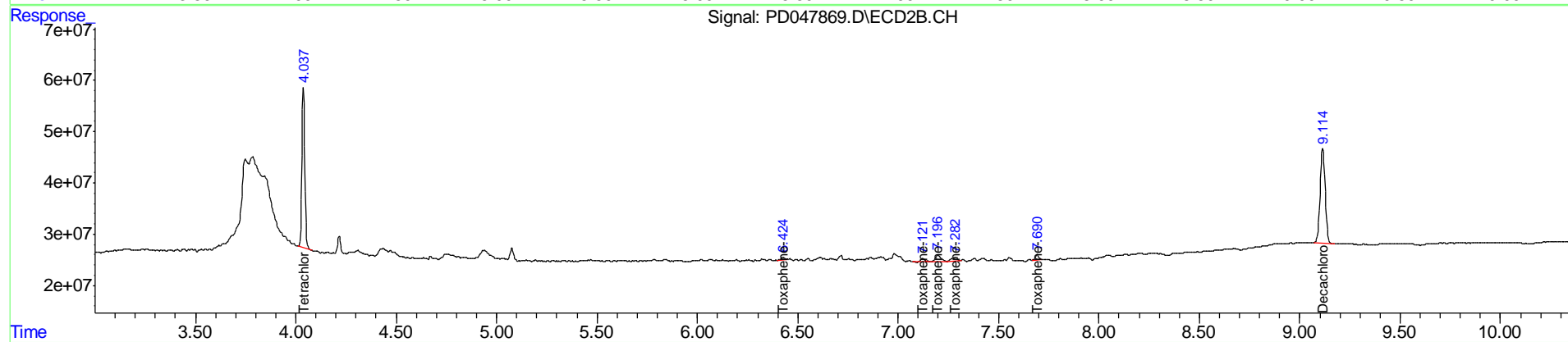
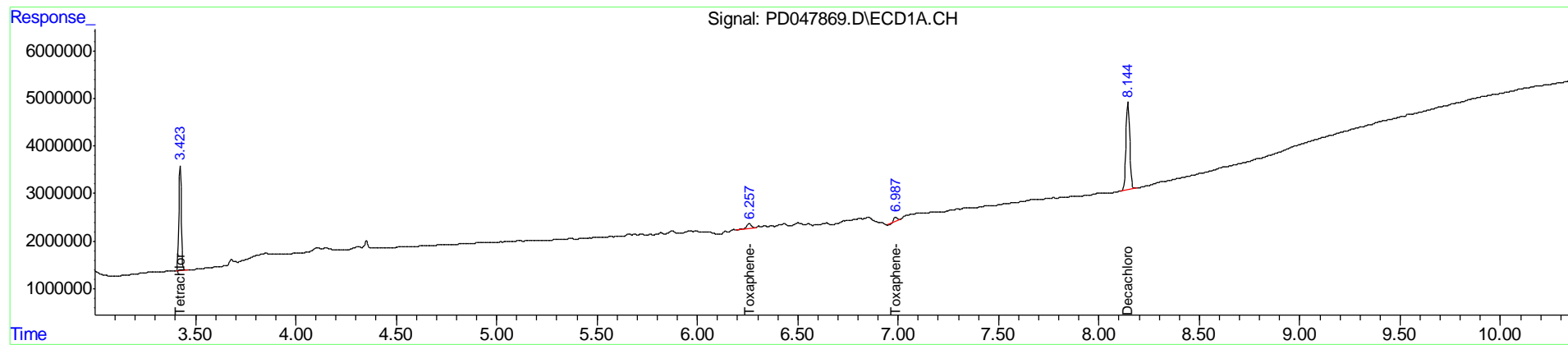
(f)=RT Delta > 1/2 Window (#)=Amounts differ by > 25% (m)=manual int.

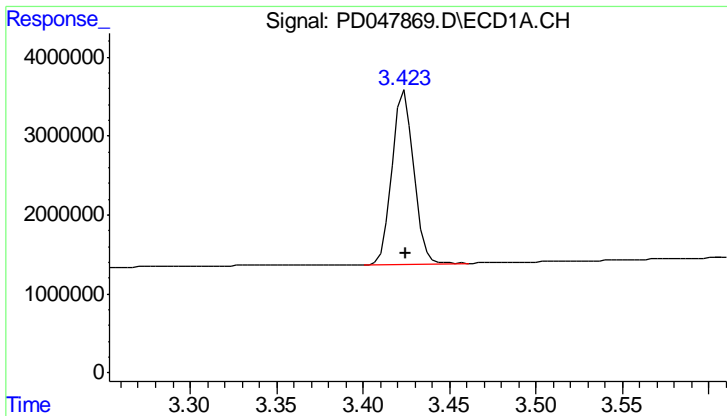
Data Path : P:\HPCHEM1\ECD_D\Data\PD052418\
 Data File : PD047869.D
 Signal(s) : Signal #1: ECD1A.CH Signal #2: ECD2B.CH
 Acq On : 24 May 2018 18:02
 Operator : UA/AJ
 Sample : LOD TOX
 Misc : ECD_D LOD TOX WATER 50 PPB
 ALS Vial : 14 Sample Multiplier: 1

Instrument :
 ECD_O
 Client Sampled :
 LOD TOX

Integration File signal 1: autoint1.e
 Integration File signal 2: autoint2.e
 Quant Time: May 25 05:45:53 2018
 Quant Method : P:\HPCHEM1\ECD_D\Method\DTX052418.M
 Quant Title : GC Extractables
 QLast Update : Thu May 24 13:37:08 2018
 Response via : Initial Calibration
 Integrator: ChemStation 6890 Scale Mode: Large solvent peaks clipped

Volume Inj. : 1 µl
 Signal #1 Phase : ZB-MR2 Signal #2 Phase: ZB-MR1
 Signal #1 Info : 30M x 0.32mm x0.2 Signal #2 Info : 30M x 0.32mm x 0.50µm

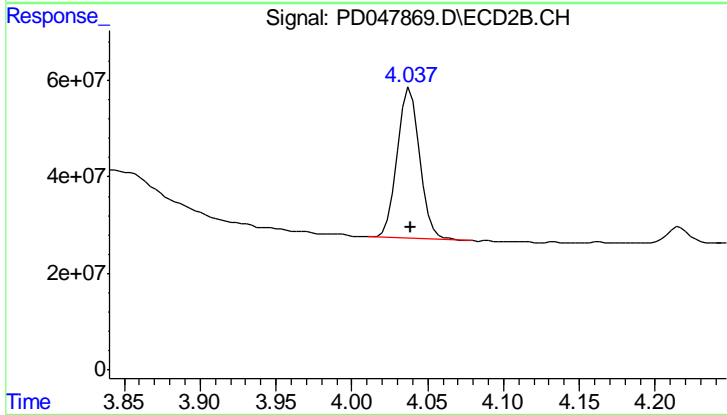




#1 Tetrachloro-m-xylene

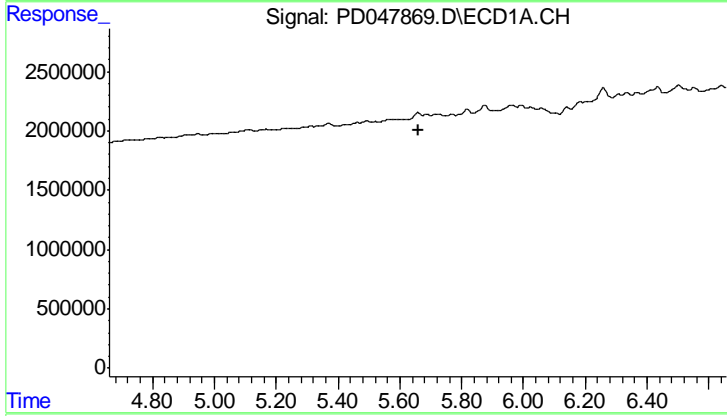
R.T.: 3.424 min
 Delta R.T.: 0.000 min
 Response: 19187596
 Conc: 16.68 ng/ml

Instrument :
 ECD_O
 ClientSampled :
 LOD TOX



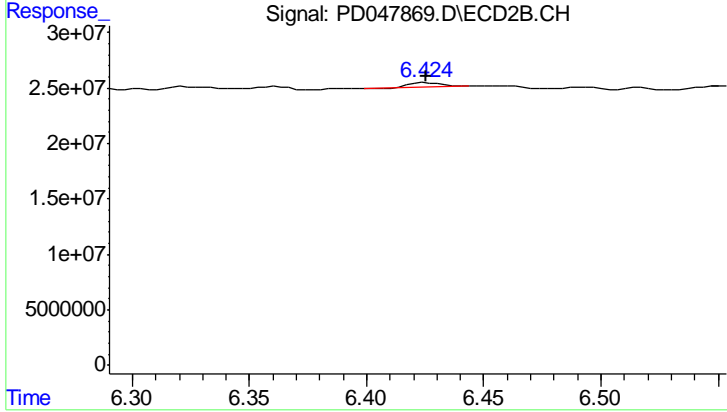
#1 Tetrachloro-m-xylene

R.T.: 4.039 min
 Delta R.T.: 0.000 min
 Response: 313707827
 Conc: 17.29 ng/ml



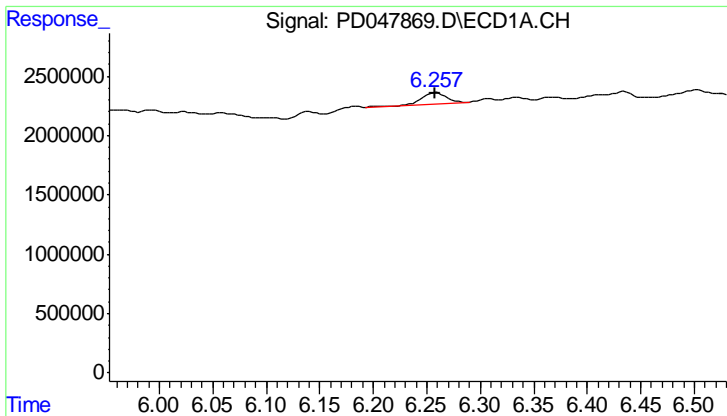
#2 Toxaphene-1

R.T.: 0.000 min
 Exp R.T. : 5.659 min
 Response: 0
 Conc: N.D.



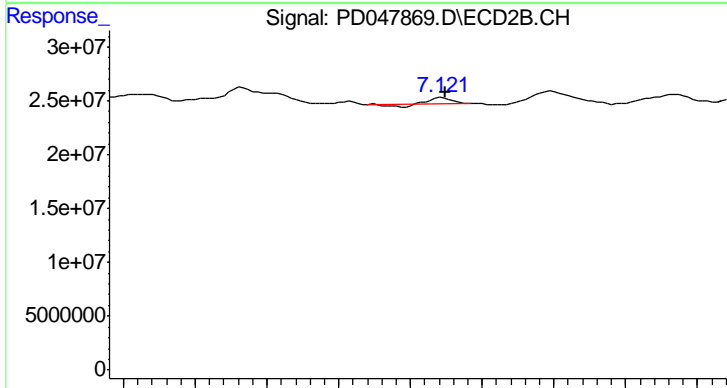
#2 Toxaphene-1

R.T.: 6.427 min
 Delta R.T.: 0.001 min
 Response: 4589974
 Conc: 42.68 ng/ml

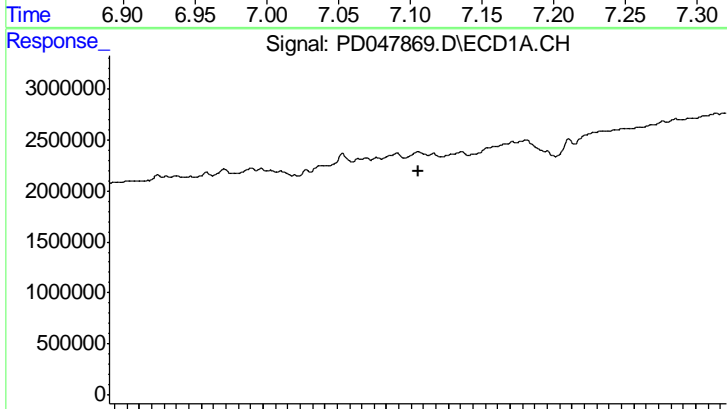


#3 Toxaphene-2
 R.T.: 6.259 min
 Delta R.T.: 0.001 min
 Response: 1470688
 Conc: 58.61 ng/ml

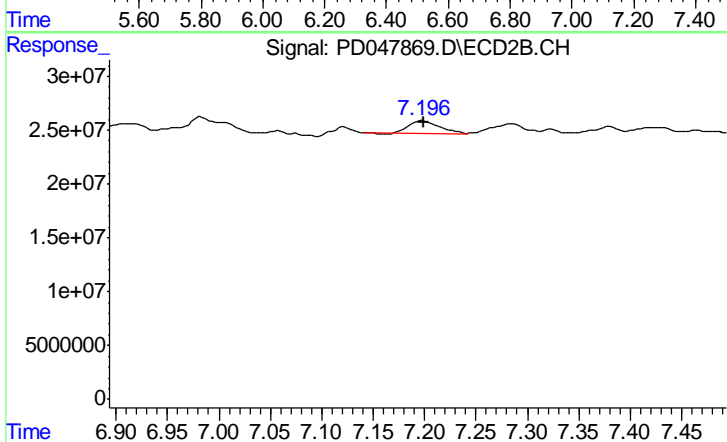
Instrument :
 ECD_O
 ClientSampleId :
 LOD TOX



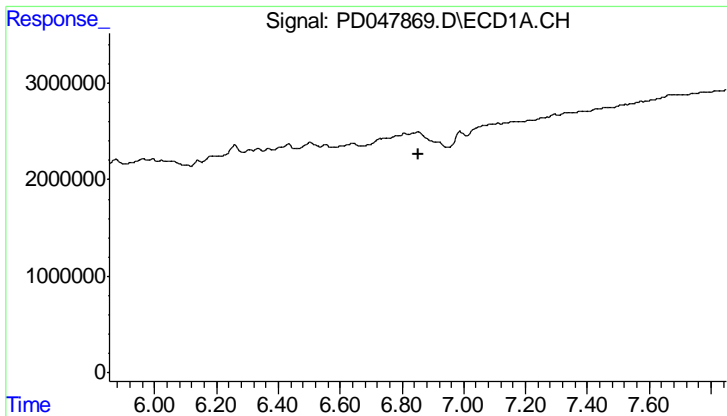
#3 Toxaphene-2
 R.T.: 7.122 min
 Delta R.T.: -0.002 min
 Response: 4396973
 Conc: 22.09 ng/ml



#4 Toxaphene-3
 R.T.: 0.000 min
 Exp R.T. : 6.502 min
 Response: 0
 Conc: N.D.



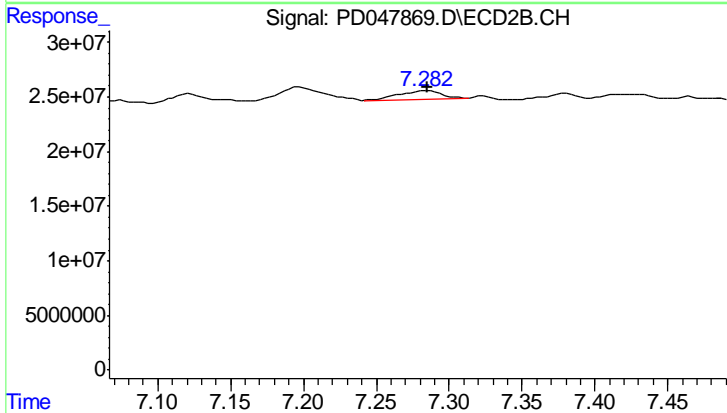
#4 Toxaphene-3
 R.T.: 7.198 min
 Delta R.T.: -0.001 min
 Response: 22787045
 Conc: 44.46 ng/ml



#5 Toxaphene-4

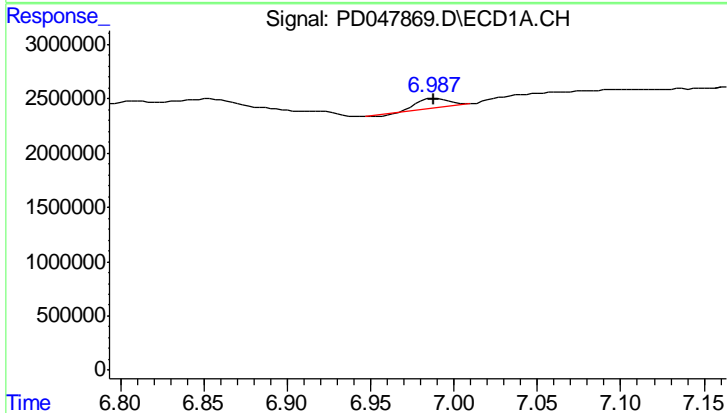
R.T.: 0.000 min
 Exp R.T.: 6.853 min
 Response: 0
 Conc: N.D.

Instrument :
 ECD_O
 ClientSampleId :
 LOD TOX



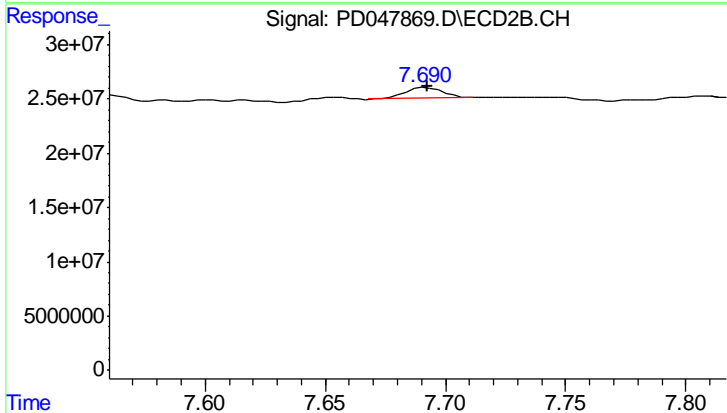
#5 Toxaphene-4

R.T.: 7.285 min
 Delta R.T.: 0.000 min
 Response: 15225545
 Conc: 44.31 ng/ml



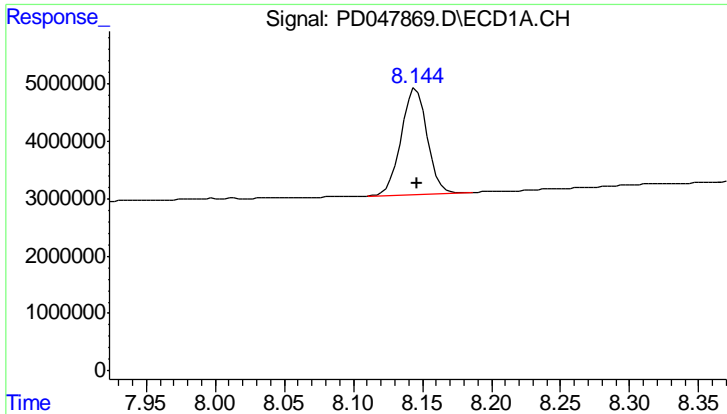
#6 Toxaphene-5

R.T.: 6.989 min
 Delta R.T.: 0.000 min
 Response: 1089842
 Conc: 34.58 ng/ml



#6 Toxaphene-5

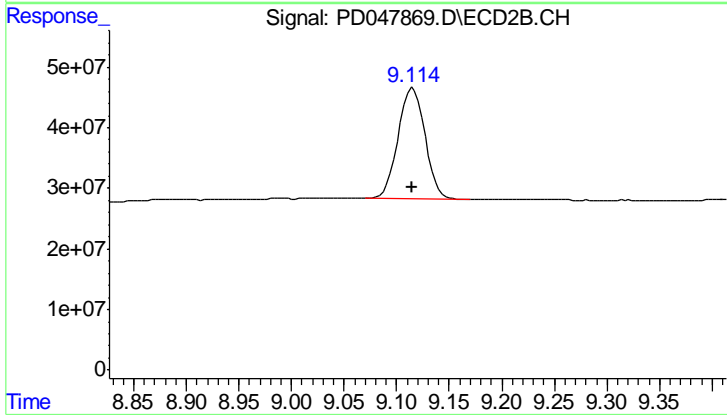
R.T.: 7.692 min
 Delta R.T.: 0.000 min
 Response: 11099734
 Conc: 48.46 ng/ml



#7 Decachlorobiphenyl

R.T.: 8.145 min
Delta R.T.: 0.000 min
Response: 23913346
Conc: 17.21 ng/ml

Instrument :
ECD_O
ClientSampleId :
LOD TOX



#7 Decachlorobiphenyl

R.T.: 9.115 min
Delta R.T.: 0.000 min
Response: 324809616
Conc: 18.97 ng/ml