

Data Path : P:\HPCHEM1\ECD_O\Data\PO052518\
 Data File : PO045113.D
 Signal(s) : Signal #1: ECD1A.CH Signal #2: ECD2B.CH
 Acq On : 26 May 2018 00:24
 Operator : SM/UA
 Sample : I.BLK
 Misc :
 ALS Vial : 2 Sample Multiplier: 1

Instrument :
 ECD_O
 ClientSampleId :
 I.BLK

Integration File signal 1: autoint1.e
 Integration File signal 2: autoint2.e
 Quant Time: May 26 04:03:16 2018
 Quant Method : P:\HPCHEM1\ECD_O\methods\PO052518.M
 Quant Title : GC EXTRACTABLES
 QLast Update : Sat May 26 01:36:04 2018
 Response via : Initial Calibration
 Integrator: ChemStation 6890 Scale Mode: Small noise peaks clipped

Volume Inj. : 2 µl
 Signal #1 Phase : ZB-MR1 Signal #2 Phase: ZB-MR2
 Signal #1 Info : 30Mx0.32mmx 0.50µ Signal #2 Info : 30M x 0.32mm x 0.25µm

Compound	RT#1	RT#2	Resp#1	Resp#2	ng/ml	ng/ml

System Monitoring Compounds						
1) SA Tetrachlo...	3.999	3.268	13258554	15406224	22.798	24.061
2) SA Decachlor...	9.301	8.009	12488934	14155994	23.723	24.693

Target Compounds

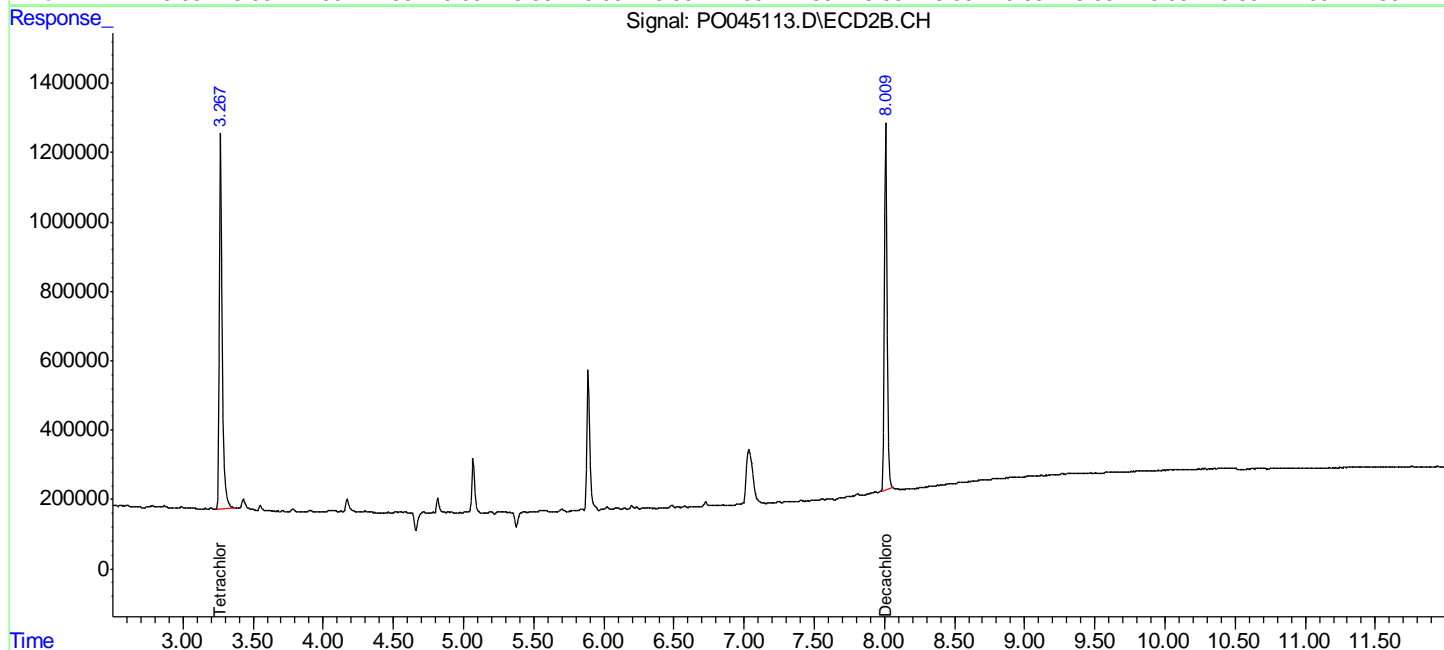
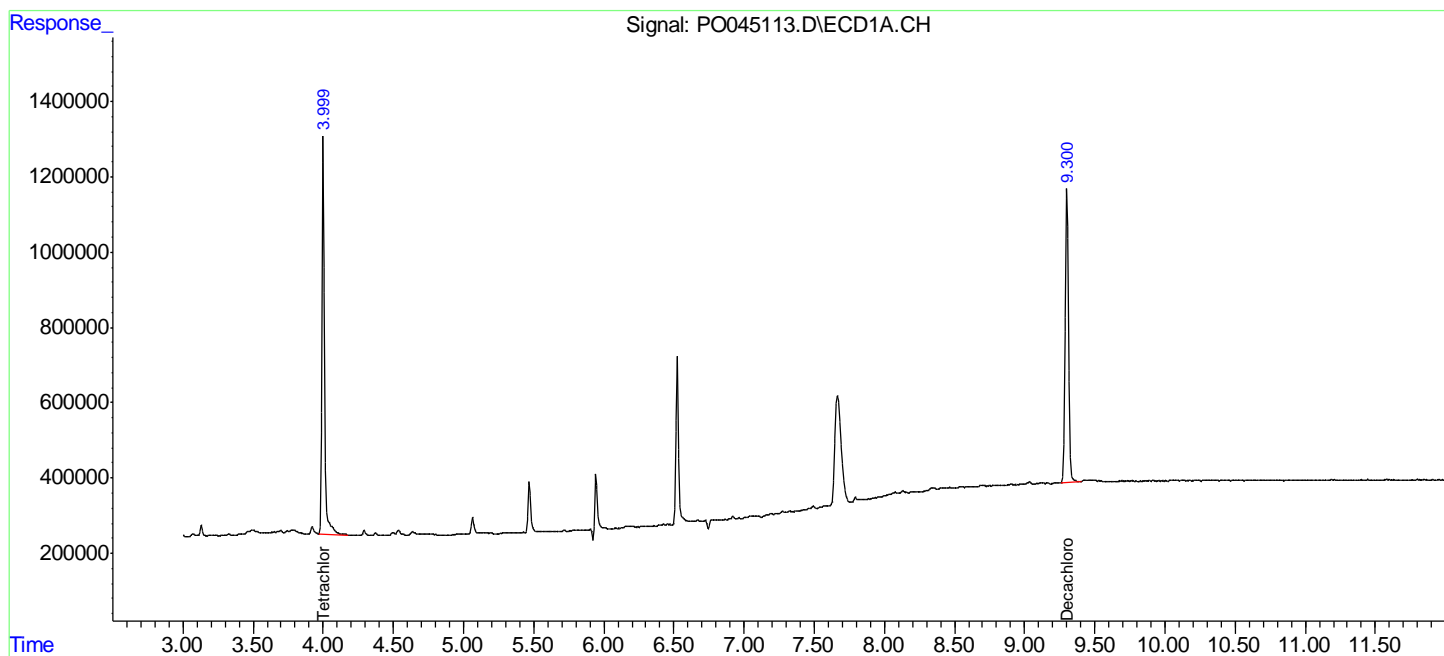
(f)=RT Delta > 1/2 Window (#)=Amounts differ by > 25% (m)=manual int.

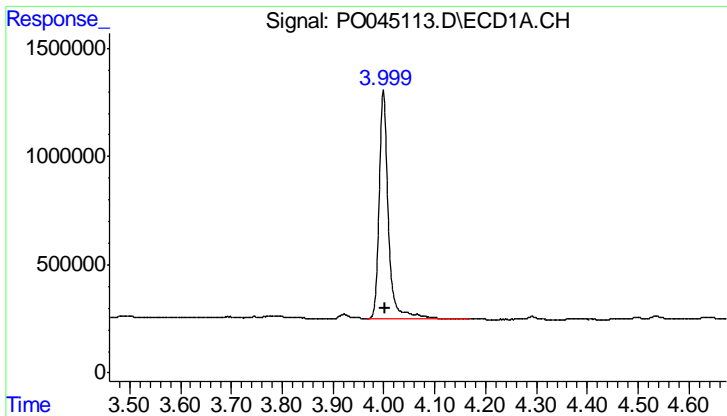
Data Path : P:\HPCHEM1\ECD_O\Data\PO052518\
 Data File : PO045113.D
 Signal(s) : Signal #1: ECD1A.CH Signal #2: ECD2B.CH
 Acq On : 26 May 2018 00:24
 Operator : SM/UA
 Sample : I.BLK
 Misc :
 ALS Vial : 2 Sample Multiplier: 1

Instrument :
 ECD_O
 ClientSampleId :
 I.BLK

Integration File signal 1: autoint1.e
 Integration File signal 2: autoint2.e
 Quant Time: May 26 04:03:16 2018
 Quant Method : P:\HPCHEM1\ECD_O\methods\PO052518.M
 Quant Title : GC EXTRACTABLES
 QLast Update : Sat May 26 01:36:04 2018
 Response via : Initial Calibration
 Integrator: ChemStation 6890 Scale Mode: Small noise peaks clipped

Volume Inj. : 2 µl
 Signal #1 Phase : ZB-MR1 Signal #2 Phase: ZB-MR2
 Signal #1 Info : 30Mx0.32mmx 0.50µ Signal #2 Info : 30M x 0.32mm x 0.25µm

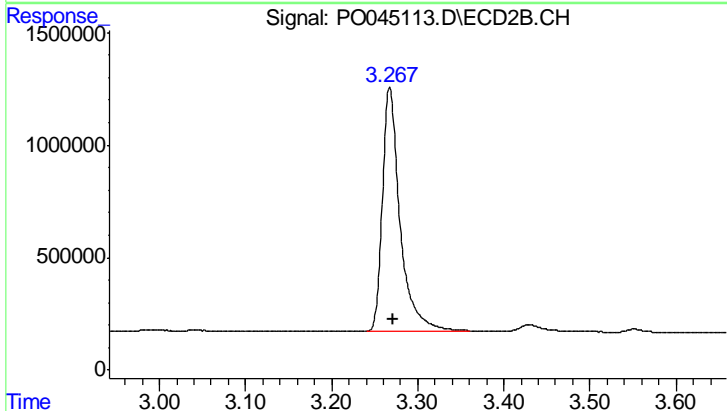




#1 Tetrachloro-m-xylene

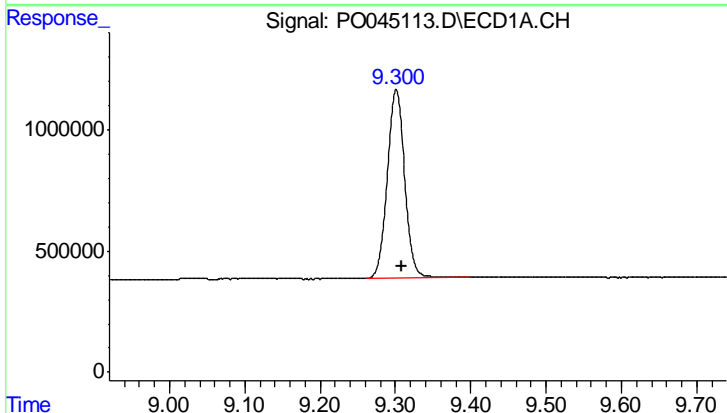
R.T.: 3.999 min
 Delta R.T.: -0.004 min
 Response: 13258554
 Conc: 22.80 ng/ml

Instrument :
 ECD_O
 ClientSampled :
 I.BLK



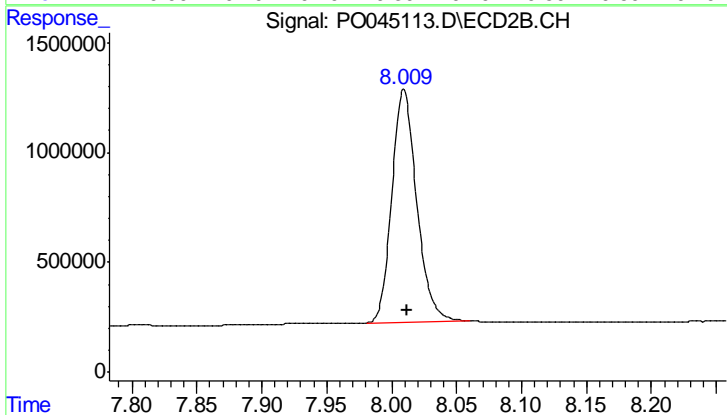
#1 Tetrachloro-m-xylene

R.T.: 3.268 min
 Delta R.T.: -0.003 min
 Response: 15406224
 Conc: 24.06 ng/ml



#2 Decachlorobiphenyl

R.T.: 9.301 min
 Delta R.T.: -0.007 min
 Response: 12488934
 Conc: 23.72 ng/ml



#2 Decachlorobiphenyl

R.T.: 8.009 min
 Delta R.T.: -0.003 min
 Response: 14155994
 Conc: 24.69 ng/ml