

Data Path : P:\HPCHEM1\ECD\_O\Data\PO052518\  
 Data File : PO045139.D  
 Signal(s) : Signal #1: ECD1A.CH Signal #2: ECD2B.CH  
 Acq On : 26 May 2018 6:56  
 Operator : SM/UA  
 Sample : J3132-03  
 Misc :  
 ALS Vial : 39 Sample Multiplier: 1

Instrument :  
 ECD\_O  
 ClientSampleId :  
 FK-GF-01-007-B

Integration File signal 1: autoint1.e  
 Integration File signal 2: autoint2.e  
 Quant Time: May 28 01:16:07 2018  
 Quant Method : P:\HPCHEM1\ECD\_O\methods\PO052518.M  
 Quant Title : GC EXTRACTABLES  
 QLast Update : Sat May 26 01:36:04 2018  
 Response via : Initial Calibration  
 Integrator: ChemStation 6890 Scale Mode: Small noise peaks clipped

Volume Inj. : 2 µl  
 Signal #1 Phase : ZB-MR1 Signal #2 Phase: ZB-MR2  
 Signal #1 Info : 30Mx0.32mmx 0.50µ Signal #2 Info : 30M x 0.32mm x 0.25µm

Compound	RT#1	RT#2	Resp#1	Resp#2	ng/ml	ng/ml
-----						
System Monitoring Compounds						
1) SA Tetrachlo...	3.998	3.268	11108507	14526800	19.101	22.688
2) SA Decachlor...	9.299	8.007	7406395	7648117	14.069	13.341

Target Compounds

-----

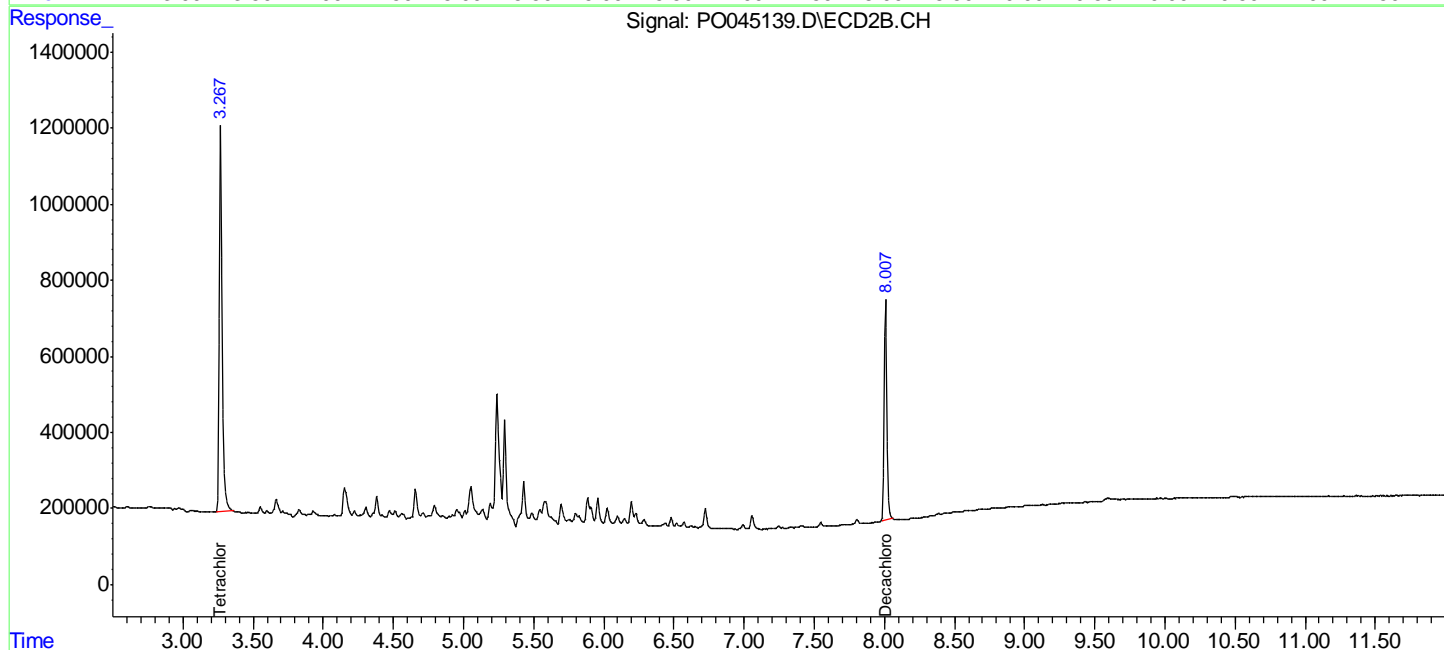
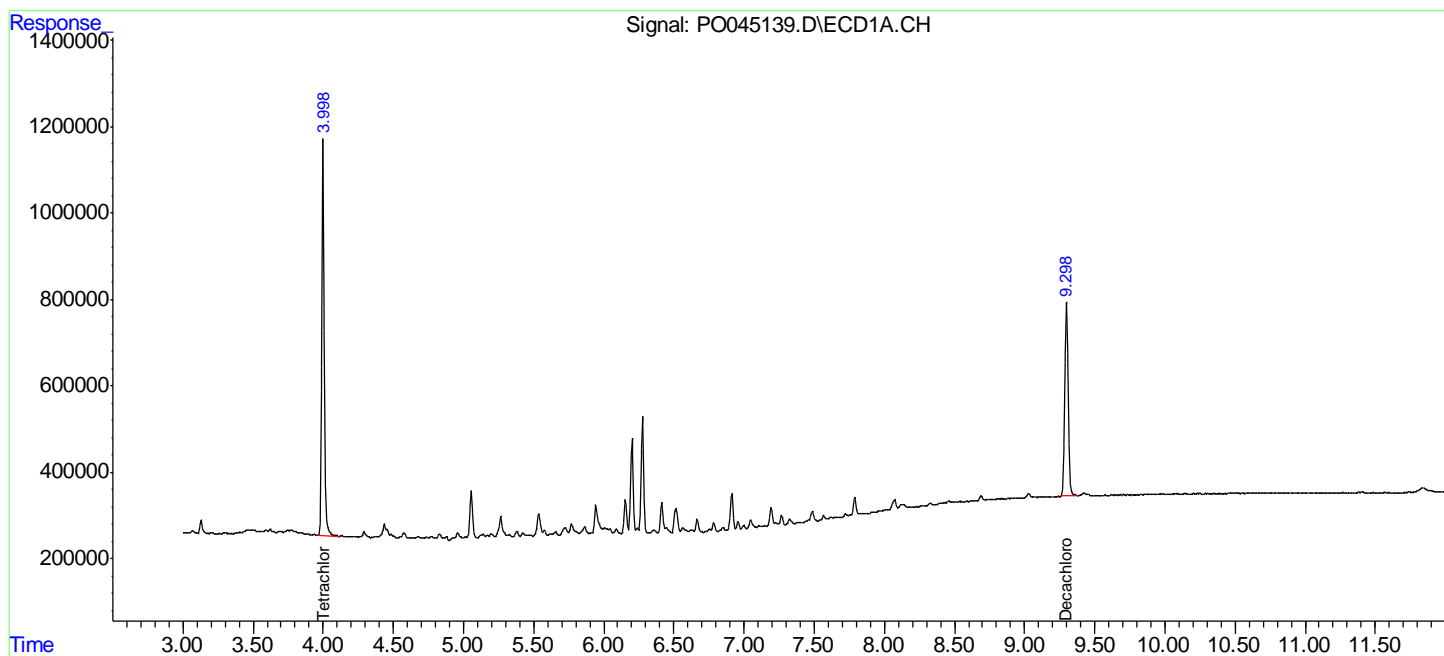
(f)=RT Delta > 1/2 Window (#)=Amounts differ by > 25% (m)=manual int.

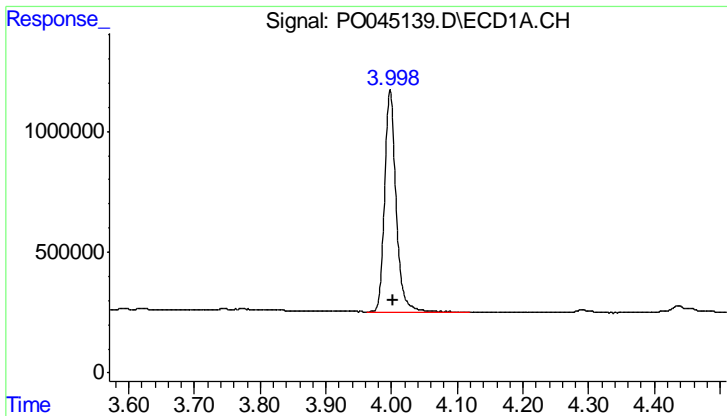
Data Path : P:\HPCHEM1\ECD\_O\Data\PO052518\  
 Data File : PO045139.D  
 Signal(s) : Signal #1: ECD1A.CH Signal #2: ECD2B.CH  
 Acq On : 26 May 2018 6:56  
 Operator : SM/UA  
 Sample : J3132-03  
 Misc :  
 ALS Vial : 39 Sample Multiplier: 1

Instrument :  
 ECD\_O  
 ClientSampleId :  
 FK-GF-01-007-B

Integration File signal 1: autoint1.e  
 Integration File signal 2: autoint2.e  
 Quant Time: May 28 01:16:07 2018  
 Quant Method : P:\HPCHEM1\ECD\_O\methods\PO052518.M  
 Quant Title : GC EXTRACTABLES  
 QLast Update : Sat May 26 01:36:04 2018  
 Response via : Initial Calibration  
 Integrator: ChemStation 6890 Scale Mode: Small noise peaks clipped

Volume Inj. : 2 µl  
 Signal #1 Phase : ZB-MR1 Signal #2 Phase: ZB-MR2  
 Signal #1 Info : 30Mx0.32mmx 0.50µ Signal #2 Info : 30M x 0.32mm x 0.25µm

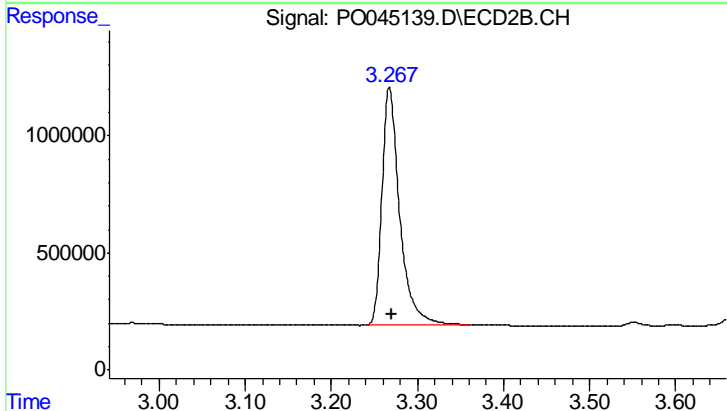




#1 Tetrachloro-m-xylene

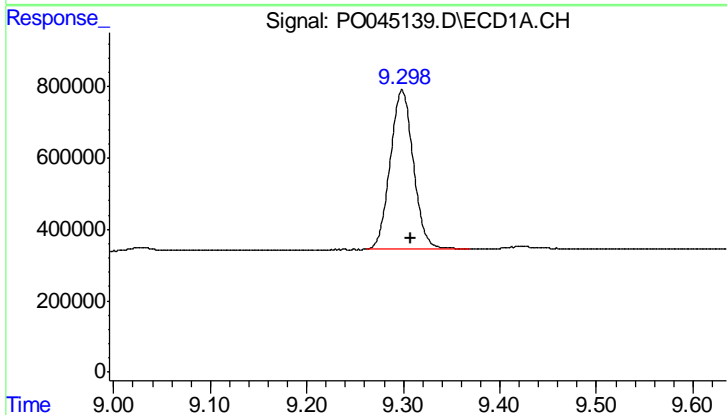
R.T.: 3.998 min  
 Delta R.T.: -0.005 min  
 Response: 11108507  
 Conc: 19.10 ng/ml

Instrument :  
 ECD\_O  
 ClientSampleId :  
 FK-GF-01-007-B



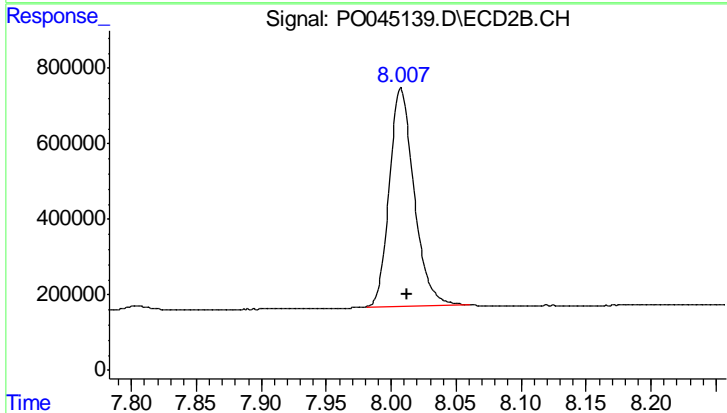
#1 Tetrachloro-m-xylene

R.T.: 3.268 min  
 Delta R.T.: -0.003 min  
 Response: 14526800  
 Conc: 22.69 ng/ml



#2 Decachlorobiphenyl

R.T.: 9.299 min  
 Delta R.T.: -0.009 min  
 Response: 7406395  
 Conc: 14.07 ng/ml



#2 Decachlorobiphenyl

R.T.: 8.007 min  
 Delta R.T.: -0.005 min  
 Response: 7648117  
 Conc: 13.34 ng/ml