

Data Path : Z:\pestpcbsrv\HPCHEM1\ECD\_0\Data\P0052919\  
 Data File : P0056668.D  
 Signal(s) : Signal #1: ECD1A.CH Signal #2: ECD2B.CH  
 Acq On : 29 May 2019 9:48  
 Operator : SM/SJ  
 Sample : AR1660CCC500  
 Misc :  
 ALS Vial : 3 Sample Multiplier: 1

Instrument :  
 ECD\_0  
 ClientSampleId :  
 AR1660CCC500

Integration File signal 1: autoint1.e  
 Integration File signal 2: autoint2.e  
 Quant Time: May 29 10:10:32 2019  
 Quant Method : Z:\pestpcbsrv\HPCHEM1\ECD\_0\methods\P0052319.M  
 Quant Title : GC EXTRACTABLES  
 QLast Update : Fri May 24 00:11:05 2019  
 Response via : Initial Calibration  
 Integrator: ChemStation 6890 Scale Mode: Small noise peaks clipped

Volume Inj. : 2 µl  
 Signal #1 Phase : ZB-MR1 Signal #2 Phase: ZB-MR2  
 Signal #1 Info : 30Mx0.32mmx 0.50µ Signal #2 Info : 30M x 0.32mm x 0.25µm

| Compound                    | RT#1  | RT#2  | Resp#1  | Resp#2  | ng/ml   | ng/ml   |
|-----------------------------|-------|-------|---------|---------|---------|---------|
| -----                       |       |       |         |         |         |         |
| System Monitoring Compounds |       |       |         |         |         |         |
| 1) SA Tetrachlo...          | 4.259 | 3.570 | 2255376 | 1712237 | 58.913  | 51.920  |
| 2) SA Decachlor...          | 9.838 | 8.509 | 2452587 | 1771791 | 49.967  | 49.690  |
| Target Compounds            |       |       |         |         |         |         |
| 3) L1 AR-1016-1             | 5.421 | 4.639 | 937280  | 621073  | 521.110 | 493.508 |
| 4) L1 AR-1016-2             | 5.442 | 4.657 | 1361609 | 892855  | 542.242 | 495.583 |
| 5) L1 AR-1016-3             | 5.504 | 4.832 | 861736  | 491102  | 536.140 | 498.103 |
| 6) L1 AR-1016-4             | 5.602 | 4.873 | 714167  | 411899  | 544.418 | 497.558 |
| 7) L1 AR-1016-5             | 5.893 | 5.083 | 721351  | 505495  | 522.109 | 471.227 |
| 31) L7 AR-1260-1            | 7.010 | 6.106 | 1251804 | 994218  | 487.809 | 497.014 |
| 32) L7 AR-1260-2            | 7.267 | 6.293 | 1529454 | 1322868 | 505.745 | 536.669 |
| 33) L7 AR-1260-3            | 7.622 | 6.445 | 1232037 | 1141729 | 511.420 | 508.967 |
| 34) L7 AR-1260-4            | 7.847 | 6.912 | 1318132 | 958781  | 503.255 | 515.191 |
| 35) L7 AR-1260-5            | 8.155 | 7.155 | 2504701 | 2302983 | 523.767 | 534.046 |

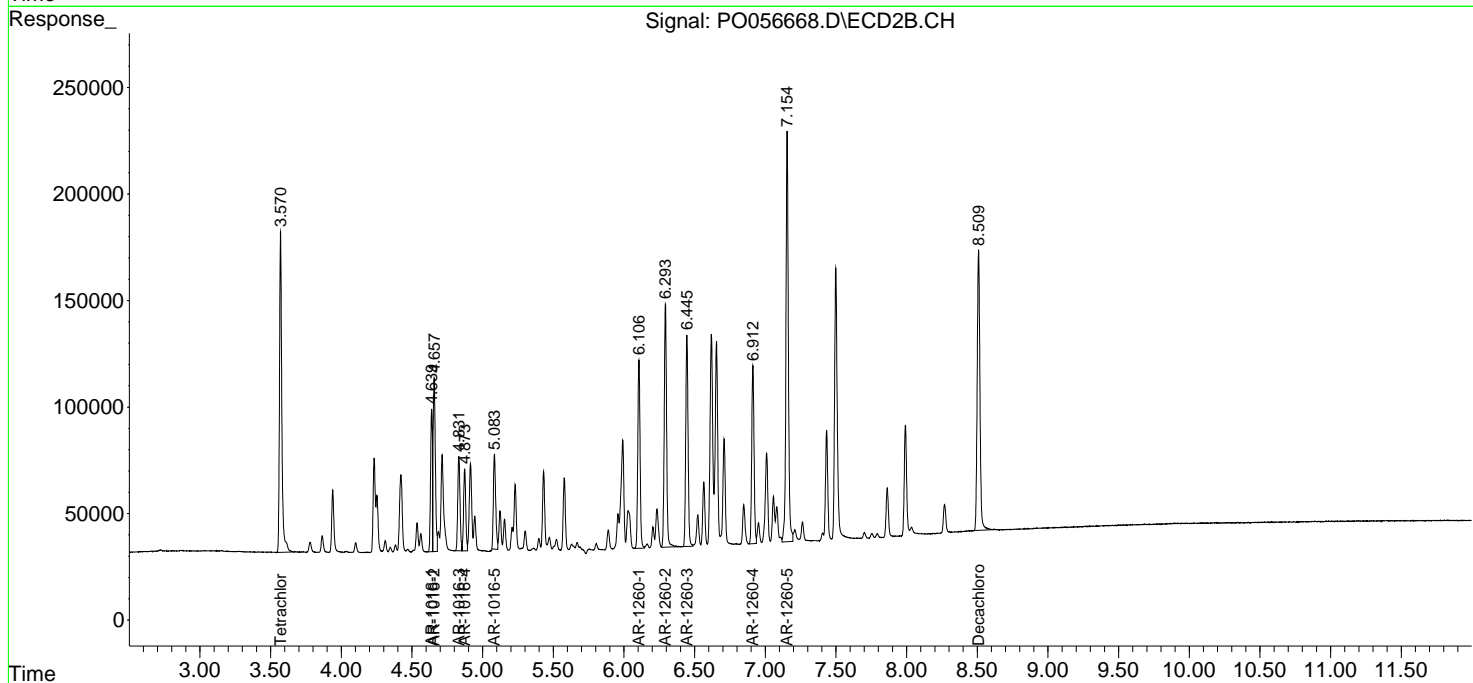
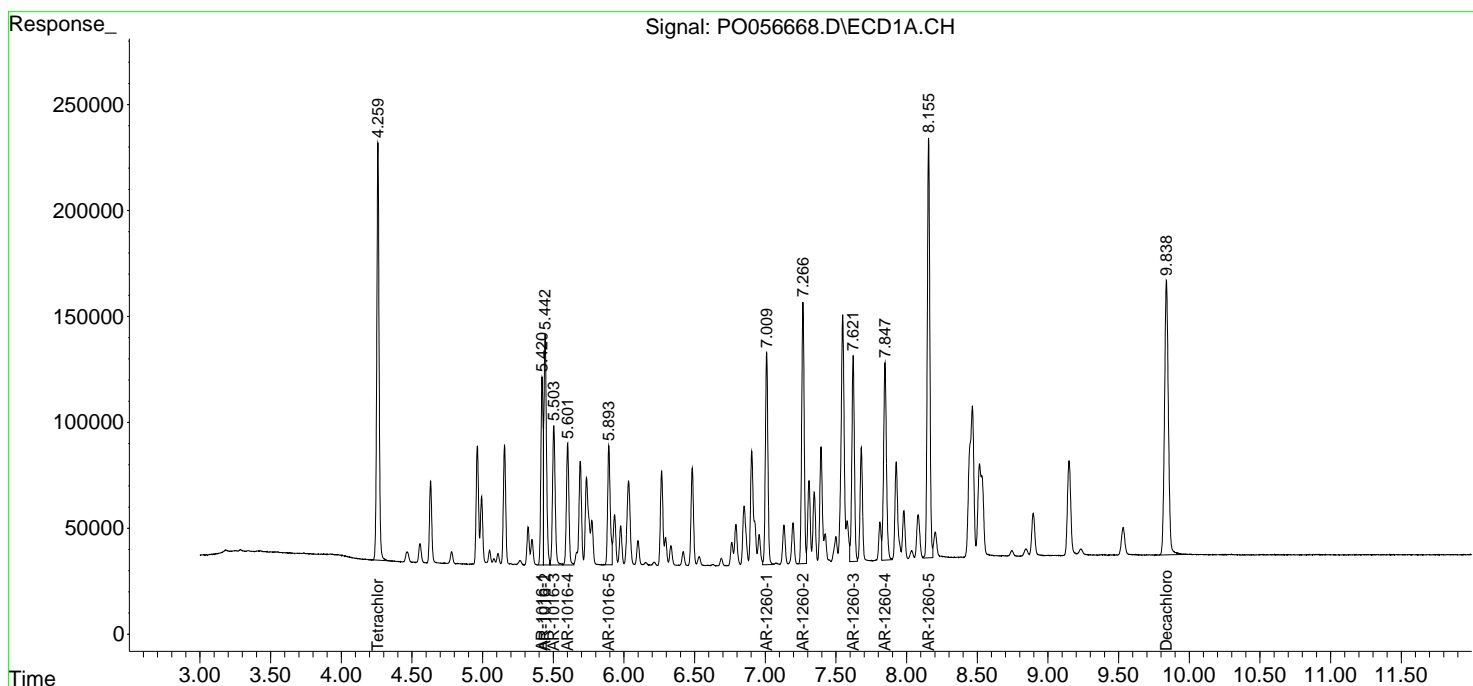
(f)=RT Delta > 1/2 Window (#)=Amounts differ by > 25% (m)=manual int.

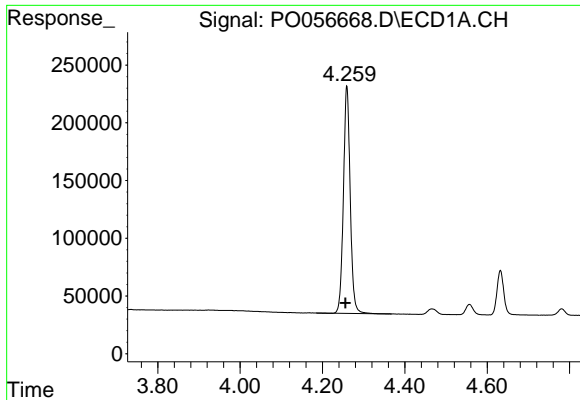
Data Path : Z:\pestpcbsrv\HPCHEM1\ECD\_0\Data\P0052919\  
 Data File : P0056668.D  
 Signal(s) : Signal #1: ECD1A.CH Signal #2: ECD2B.CH  
 Acq On : 29 May 2019 9:48  
 Operator : SM/SJ  
 Sample : AR1660CCC500  
 Misc :  
 ALS Vial : 3 Sample Multiplier: 1

Instrument :  
 ECD\_O  
 ClientSampled :  
 AR1660CCC500

Integration File signal 1: autoint1.e  
 Integration File signal 2: autoint2.e  
 Quant Time: May 29 10:10:32 2019  
 Quant Method : Z:\pestpcbsrv\HPCHEM1\ECD\_0\methods\P0052319.M  
 Quant Title : GC EXTRACTABLES  
 QLast Update : Fri May 24 00:11:05 2019  
 Response via : Initial Calibration  
 Integrator: ChemStation 6890 Scale Mode: Small noise peaks clipped

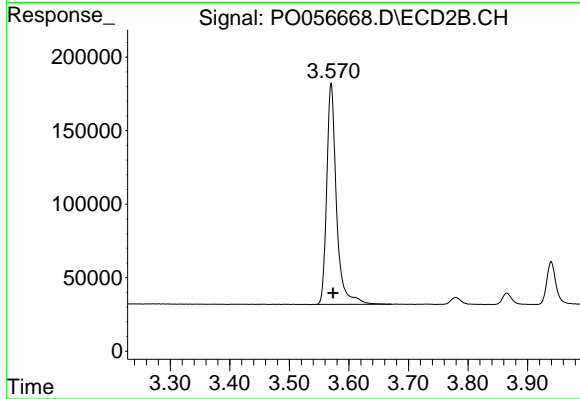
Volume Inj. : 2 µl  
 Signal #1 Phase : ZB-MR1 Signal #2 Phase: ZB-MR2  
 Signal #1 Info : 30Mx0.32mmx 0.50µ Signal #2 Info : 30M x 0.32mm x 0.25µm



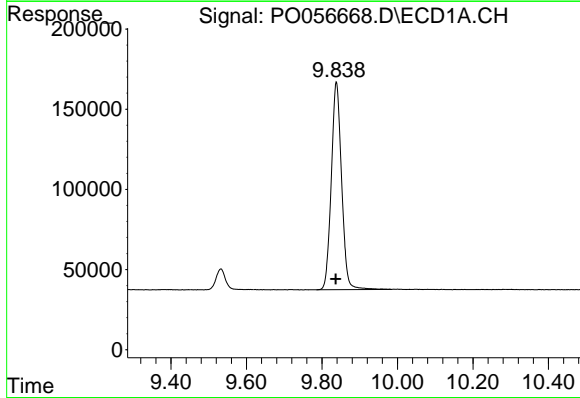


#1 Tetrachloro-m-xylene  
 R.T.: 4.259 min  
 Delta R.T.: 0.003 min  
 Response: 2255376  
 Conc: 58.91 ng/ml

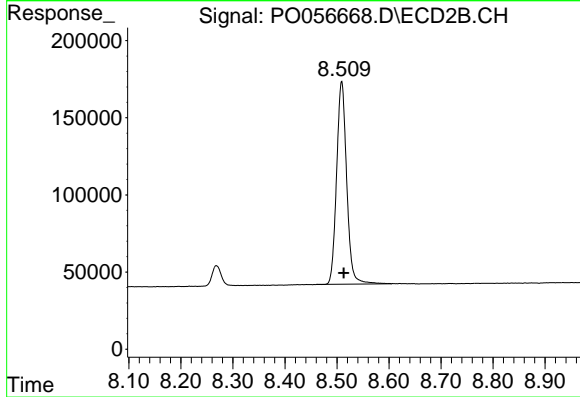
Instrument :  
 ECD\_O  
 ClientSampleId :  
 AR1660CCC500



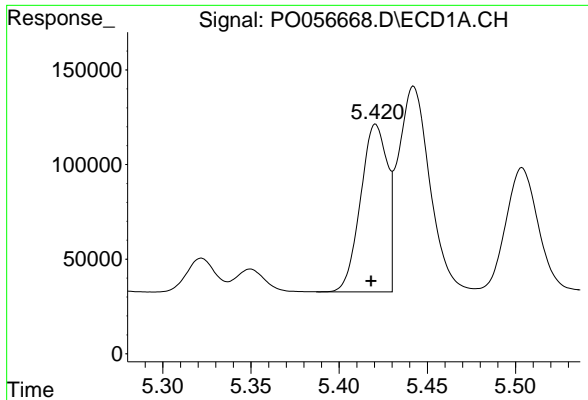
#1 Tetrachloro-m-xylene  
 R.T.: 3.570 min  
 Delta R.T.: -0.003 min  
 Response: 1712237  
 Conc: 51.92 ng/ml



#2 Decachlorobiphenyl  
 R.T.: 9.838 min  
 Delta R.T.: 0.002 min  
 Response: 2452587  
 Conc: 49.97 ng/ml



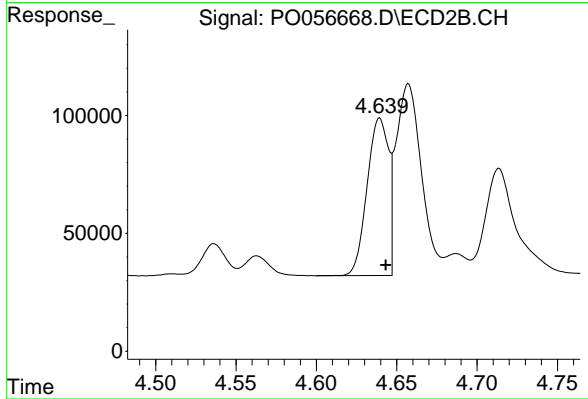
#2 Decachlorobiphenyl  
 R.T.: 8.509 min  
 Delta R.T.: -0.004 min  
 Response: 1771791  
 Conc: 49.69 ng/ml



#3 AR-1016-1

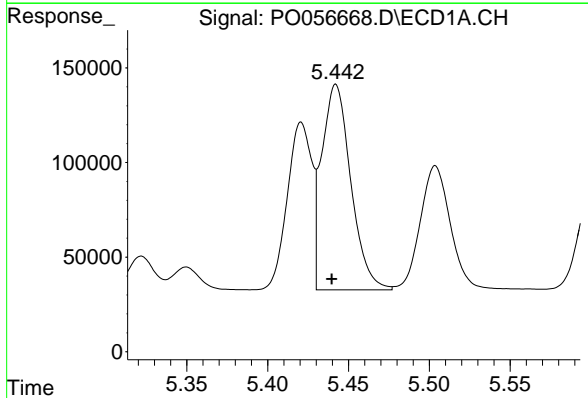
R.T.: 5.421 min  
Delta R.T.: 0.003 min  
Response: 937280  
Conc: 521.11 ng/ml

Instrument :  
ECD\_O  
ClientSampled :  
AR1660CCC500



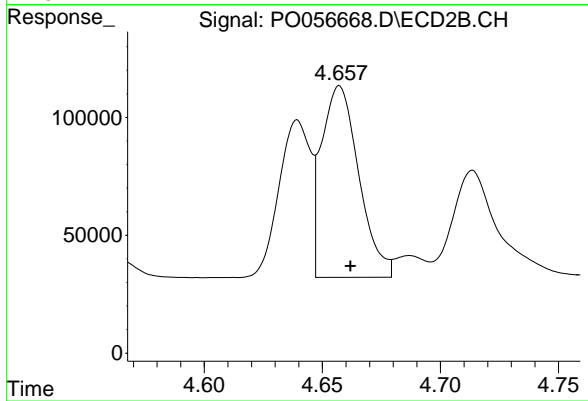
#3 AR-1016-1

R.T.: 4.639 min  
Delta R.T.: -0.004 min  
Response: 621073  
Conc: 493.51 ng/ml



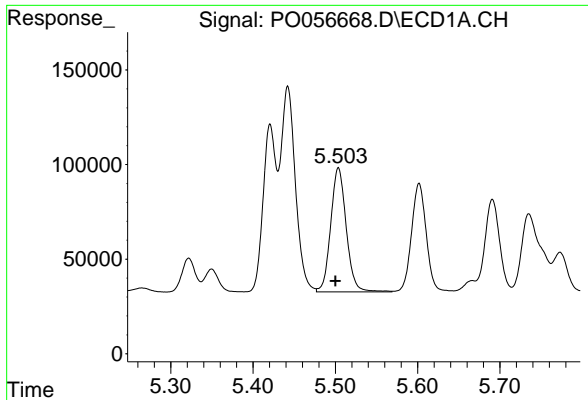
#4 AR-1016-2

R.T.: 5.442 min  
Delta R.T.: 0.003 min  
Response: 1361609  
Conc: 542.24 ng/ml



#4 AR-1016-2

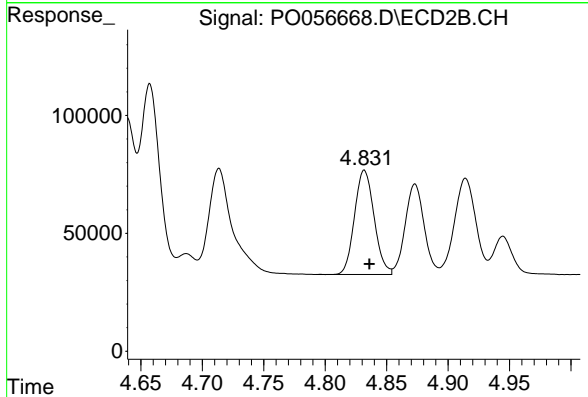
R.T.: 4.657 min  
Delta R.T.: -0.005 min  
Response: 892855  
Conc: 495.58 ng/ml



#5 AR-1016-3

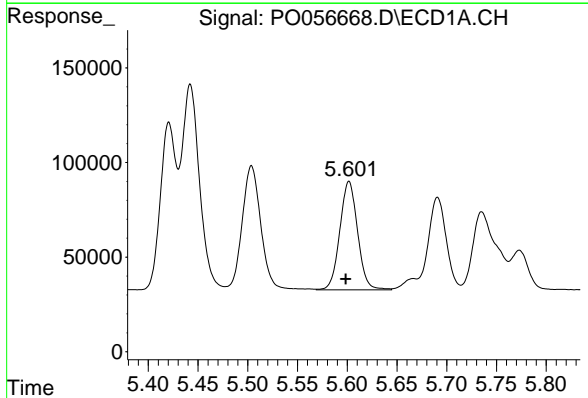
R.T.: 5.504 min  
 Delta R.T.: 0.004 min  
 Response: 861736  
 Conc: 536.14 ng/ml

Instrument :  
 ECD\_O  
 ClientSampleId :  
 AR1660CCC500



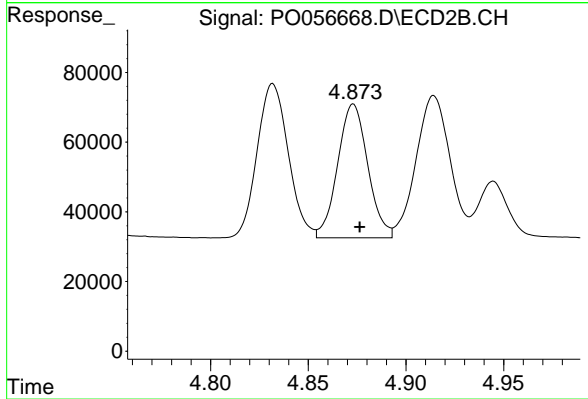
#5 AR-1016-3

R.T.: 4.832 min  
 Delta R.T.: -0.004 min  
 Response: 491102  
 Conc: 498.10 ng/ml



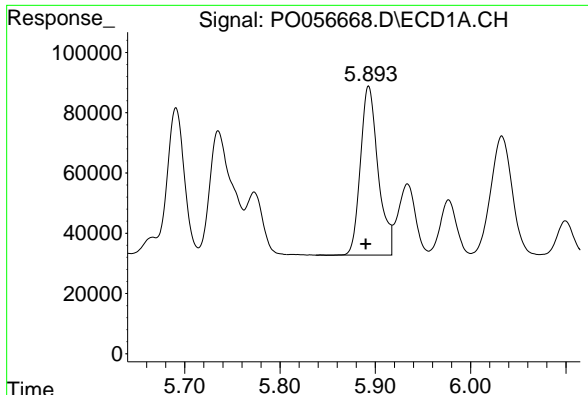
#6 AR-1016-4

R.T.: 5.602 min  
 Delta R.T.: 0.003 min  
 Response: 714167  
 Conc: 544.42 ng/ml



#6 AR-1016-4

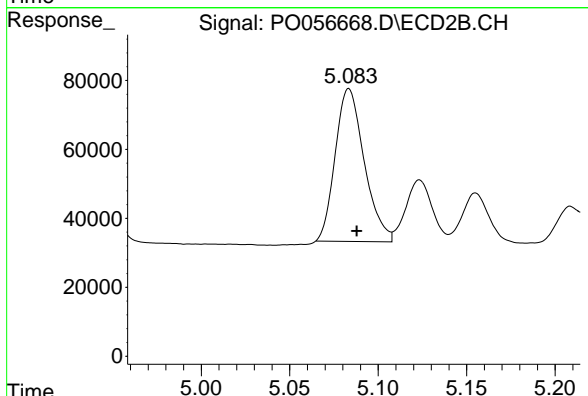
R.T.: 4.873 min  
 Delta R.T.: -0.003 min  
 Response: 411899  
 Conc: 497.56 ng/ml



#7 AR-1016-5

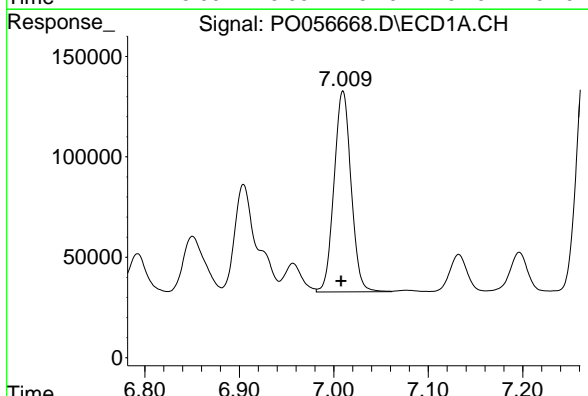
R.T.: 5.893 min  
 Delta R.T.: 0.003 min  
 Response: 721351  
 Conc: 522.11 ng/ml

Instrument :  
 ECD\_O  
 ClientSampleId :  
 AR1660CCC500



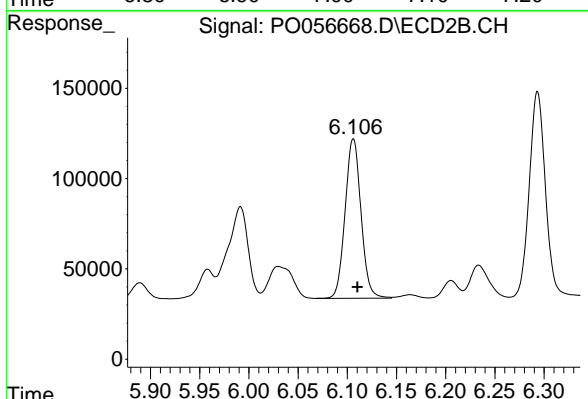
#7 AR-1016-5

R.T.: 5.083 min  
 Delta R.T.: -0.004 min  
 Response: 505495  
 Conc: 471.23 ng/ml



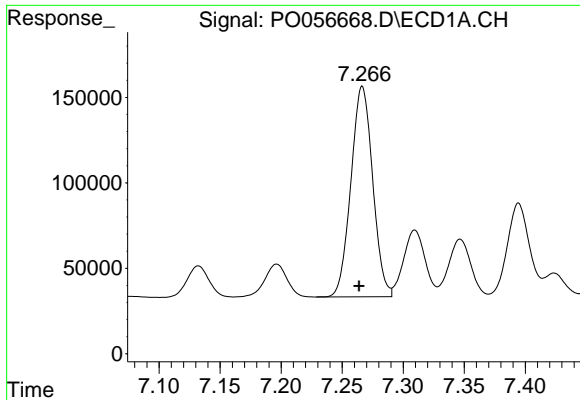
#31 AR-1260-1

R.T.: 7.010 min  
 Delta R.T.: 0.002 min  
 Response: 1251804  
 Conc: 487.81 ng/ml



#31 AR-1260-1

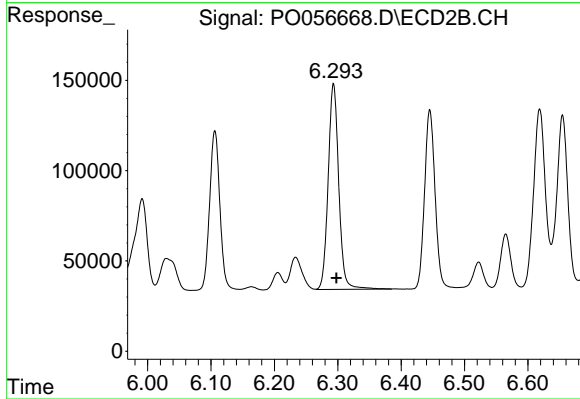
R.T.: 6.106 min  
 Delta R.T.: -0.004 min  
 Response: 994218  
 Conc: 497.01 ng/ml



#32 AR-1260-2

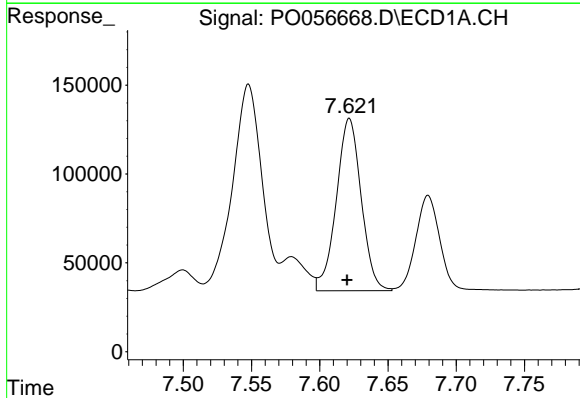
R.T.: 7.267 min  
 Delta R.T.: 0.003 min  
 Response: 1529454  
 Conc: 505.74 ng/ml

Instrument :  
 ECD\_O  
 ClientSampleId :  
 AR1660CCC500



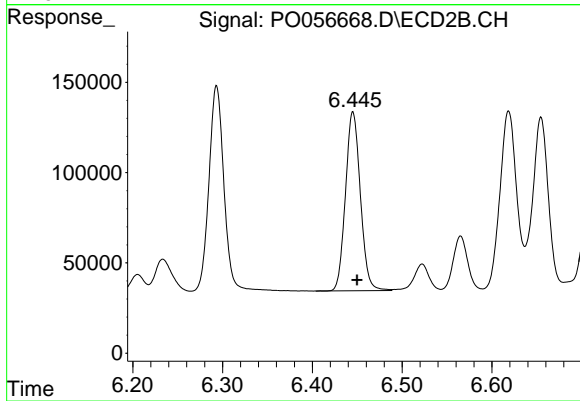
#32 AR-1260-2

R.T.: 6.293 min  
 Delta R.T.: -0.004 min  
 Response: 1322868  
 Conc: 536.67 ng/ml



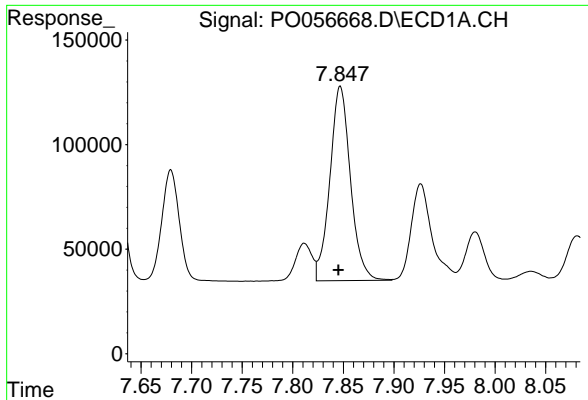
#33 AR-1260-3

R.T.: 7.622 min  
 Delta R.T.: 0.002 min  
 Response: 1232037  
 Conc: 511.42 ng/ml



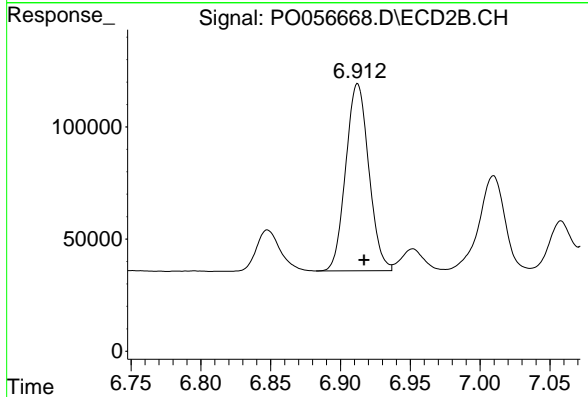
#33 AR-1260-3

R.T.: 6.445 min  
 Delta R.T.: -0.005 min  
 Response: 1141729  
 Conc: 508.97 ng/ml

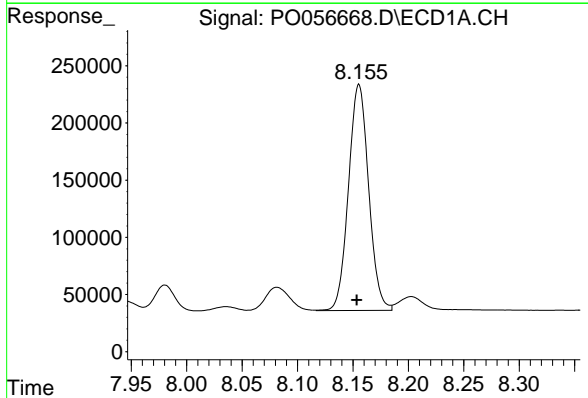


#34 AR-1260-4  
 R.T.: 7.847 min  
 Delta R.T.: 0.002 min  
 Response: 1318132  
 Conc: 503.26 ng/ml

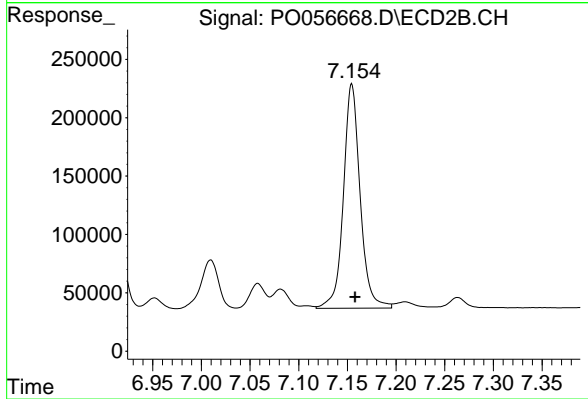
Instrument :  
 ECD\_O  
 ClientSampled :  
 AR1660CCC500



#34 AR-1260-4  
 R.T.: 6.912 min  
 Delta R.T.: -0.005 min  
 Response: 958781  
 Conc: 515.19 ng/ml



#35 AR-1260-5  
 R.T.: 8.155 min  
 Delta R.T.: 0.002 min  
 Response: 2504701  
 Conc: 523.77 ng/ml



#35 AR-1260-5  
 R.T.: 7.155 min  
 Delta R.T.: -0.003 min  
 Response: 2302983  
 Conc: 534.05 ng/ml