

Data Path : Z:\pestpcbsrv\HPCHEM1\ECD_0\Data\P0053119\
 Data File : P0056742.D
 Signal(s) : Signal #1: ECD1A.CH Signal #2: ECD2B.CH
 Acq On : 31 May 2019 12:58
 Operator : SM/SJ
 Sample : K2944-02
 Misc :
 ALS Vial : 5 Sample Multiplier: 1

Instrument :
 ECD_0
 ClientSampleId :
 FESB-2(14.5-15)

Integration File signal 1: autoint1.e
 Integration File signal 2: autoint2.e
 Quant Time: May 31 13:13:16 2019
 Quant Method : Z:\pestpcbsrv\HPCHEM1\ECD_0\methods\P0052319.M
 Quant Title : GC EXTRACTABLES
 QLast Update : Fri May 24 00:11:05 2019
 Response via : Initial Calibration
 Integrator: ChemStation 6890 Scale Mode: Small noise peaks clipped

Volume Inj. : 2 µl
 Signal #1 Phase : ZB-MR1 Signal #2 Phase: ZB-MR2
 Signal #1 Info : 30Mx0.32mmx 0.50µ Signal #2 Info : 30M x 0.32mm x 0.25µm

Compound	RT#1	RT#2	Resp#1	Resp#2	ng/ml	ng/ml

System Monitoring Compounds						
1) SA Tetrachlo...	4.259	3.569	820091	695983	21.422	21.104
2) SA Decachlor...	9.838	8.507	1095178	700844	22.312	19.655

Target Compounds

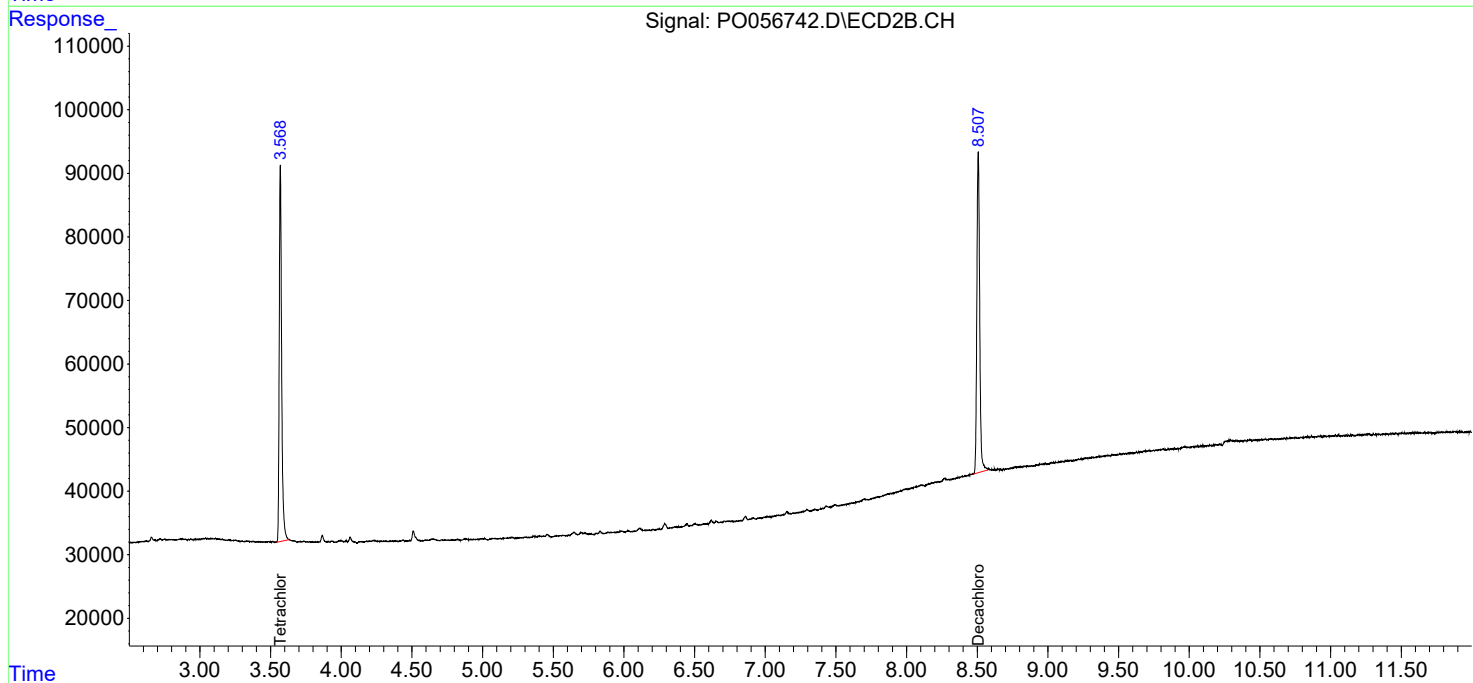
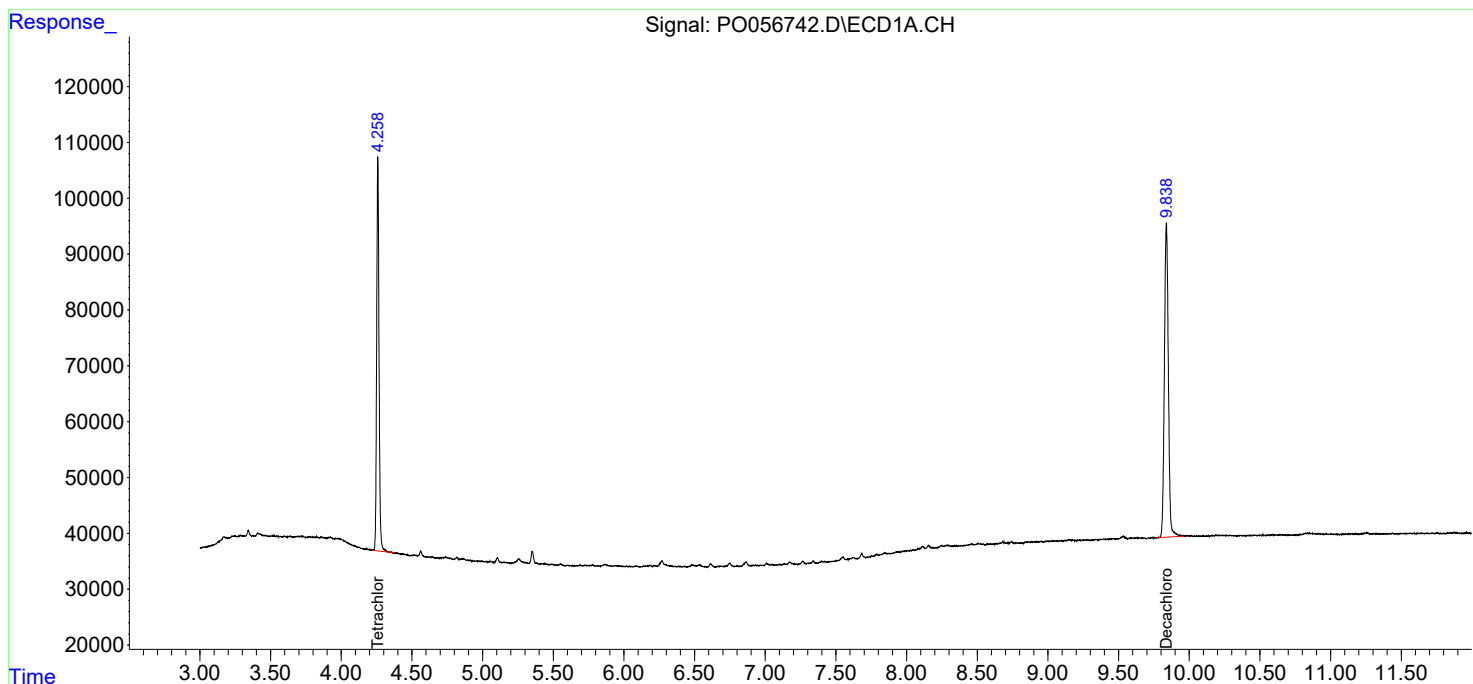
(f)=RT Delta > 1/2 Window (#)=Amounts differ by > 25% (m)=manual int.

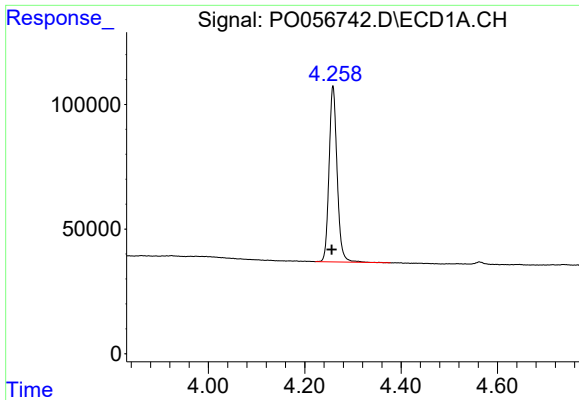
Data Path : Z:\pestpcbsrv\HPCHEM1\ECD_0\Data\P0053119\
 Data File : P0056742.D
 Signal(s) : Signal #1: ECD1A.CH Signal #2: ECD2B.CH
 Acq On : 31 May 2019 12:58
 Operator : SM/SJ
 Sample : K2944-02
 Misc :
 ALS Vial : 5 Sample Multiplier: 1

Instrument :
 ECD_O
 ClientSampleId :
 FESB-2(14.5-15)

Integration File signal 1: autoint1.e
 Integration File signal 2: autoint2.e
 Quant Time: May 31 13:13:16 2019
 Quant Method : Z:\pestpcbsrv\HPCHEM1\ECD_0\methods\P0052319.M
 Quant Title : GC EXTRACTABLES
 QLast Update : Fri May 24 00:11:05 2019
 Response via : Initial Calibration
 Integrator: ChemStation 6890 Scale Mode: Small noise peaks clipped

Volume Inj. : 2 µl
 Signal #1 Phase : ZB-MR1 Signal #2 Phase: ZB-MR2
 Signal #1 Info : 30Mx0.32mmx 0.50µ Signal #2 Info : 30M x 0.32mm x 0.25µm

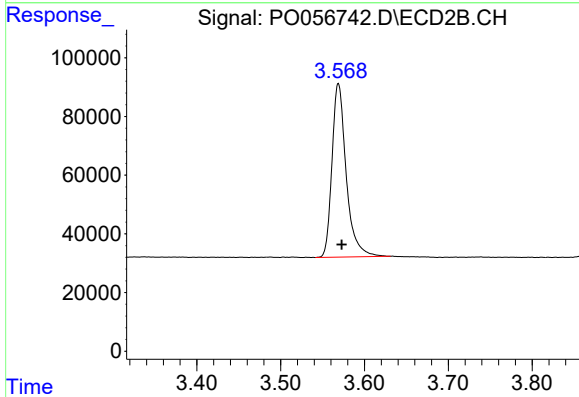




#1 Tetrachloro-m-xylene

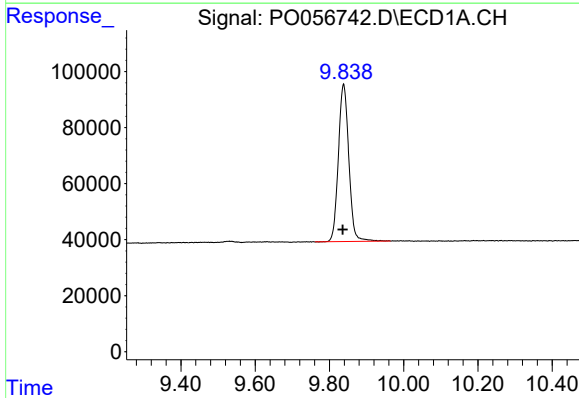
R.T.: 4.259 min
 Delta R.T.: 0.003 min
 Response: 820091
 Conc: 21.42 ng/ml

Instrument :
 ECD_O
 ClientSampleId :
 FESB-2(14.5-15)



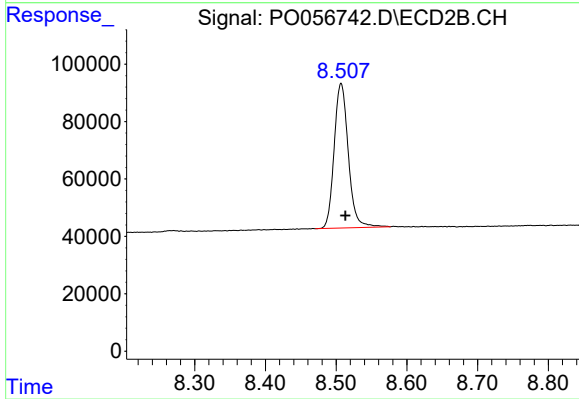
#1 Tetrachloro-m-xylene

R.T.: 3.569 min
 Delta R.T.: -0.004 min
 Response: 695983
 Conc: 21.10 ng/ml



#2 Decachlorobiphenyl

R.T.: 9.838 min
 Delta R.T.: 0.002 min
 Response: 1095178
 Conc: 22.31 ng/ml



#2 Decachlorobiphenyl

R.T.: 8.507 min
 Delta R.T.: -0.006 min
 Response: 700844
 Conc: 19.66 ng/ml