

Data Path : P:\HPCHEM1\ECD_O\Data\PO060118\
 Data File : PO045289.D
 Signal(s) : Signal #1: ECD1A.CH Signal #2: ECD2B.CH
 Acq On : 31 May 2018 18:00
 Operator : SM/UA
 Sample : J3178-13
 Misc :
 ALS Vial : 8 Sample Multiplier: 1

Instrument :
 ECD_O
 ClientSampleId :
 WC-9

Integration File signal 1: autoint1.e
 Integration File signal 2: autoint2.e
 Quant Time: Jun 01 00:54:50 2018
 Quant Method : P:\HPCHEM1\ECD_O\methods\PO053018.M
 Quant Title : GC EXTRACTABLES
 QLast Update : Thu May 31 04:53:22 2018
 Response via : Initial Calibration
 Integrator: ChemStation 6890 Scale Mode: Small noise peaks clipped

Volume Inj. : 2 µl
 Signal #1 Phase : ZB-MR1 Signal #2 Phase: ZB-MR2
 Signal #1 Info : 30Mx0.32mmx 0.50µ Signal #2 Info : 30M x 0.32mm x 0.25µm

Compound	RT#1	RT#2	Resp#1	Resp#2	ng/ml	ng/ml

System Monitoring Compounds						
1) SA Tetrachlo...	3.999	3.275	3777448	4528486	18.085	16.331
2) SA Decachlor...	9.281	7.996	2599828	2945444	11.320	10.451
Target Compounds						
3) L1 AR-1016-1	4.824	0.000	881804	0	166.976	N.D. #
4) L1 AR-1016-2	5.259	4.470	473132	411810	70.904	69.838
5) L1 AR-1016-3	5.259	4.566	473132	349991	84.556	49.958 #
6) L1 AR-1016-4	0.000	4.764	0	1174448	N.D.	157.755 #
7) L1 AR-1016-5	5.935	5.048	590218	1449956	117.457	193.385 #
10) L2 AR-1221-3	0.000	3.666	0	684441	N.D.	55.371 #
11) L3 AR-1232-1	0.000	3.666	0	684441	N.D.	117.870 #
12) L3 AR-1232-2	5.049	4.352	619515	282711	188.151	22.382 #
13) L3 AR-1232-3	0.000	4.352	0	282711	N.D.	54.230 #
14) L3 AR-1232-4	5.259	4.470	473132	411810	138.251	108.036
15) L3 AR-1232-5	5.259	4.566	473132	349991	176.067	103.474 #
17) L4 AR-1242-2	0.000	4.352	0	282711	N.D.	13.817 #
18) L4 AR-1242-3	5.259	4.470	473132	411810	106.371	67.004 #
19) L4 AR-1242-4	5.525	4.566	1425743	349991	328.506	58.505 #
20) L4 AR-1242-5	0.000	4.764	0	1174448	N.D.	179.995 #
21) L5 AR-1248-1	5.525	4.764	1425743	1174448	201.023	110.653 #
22) L5 AR-1248-2	0.000	4.834	0	196423	N.D.	19.089 #
23) L5 AR-1248-3	5.935	5.048	590218	1449956	68.074	90.170 #
24) L5 AR-1248-4	5.935	5.048	590218	1449956	66.672	108.219 #
25) L5 AR-1248-5	6.193	5.583	2995277	3550661	536.373	493.507
26) L6 AR-1254-1	6.144	5.048	1102058	1449956	79.687	78.245
27) L6 AR-1254-2	6.403	5.184	2253169	680479	234.469	42.207 #
28) L6 AR-1254-3	6.509	5.583	1768515	3550661	112.242	137.786
29) L6 AR-1254-4	0.000	5.788	0	514604	N.D.	25.842 #
30) L6 AR-1254-5	0.000	6.087	0	401750	N.D.	33.541 #
31) L7 AR-1260-1	6.655	5.690	1036656	1185267	89.497	72.414
32) L7 AR-1260-2	6.902	5.877	1908874	1217923	125.446	57.646 #
33) L7 AR-1260-3	7.256	6.220	834783	1165764	65.754	61.591
34) L7 AR-1260-4	7.777	6.714	1176574	1858463	41.416	47.204
35) L7 AR-1260-5	8.047	7.047	1329709	2057226	79.483	74.743
36) L8 AR-1262-1	6.655	5.877	1036656	1217923	95.220	64.340 #
37) L8 AR-1262-2	6.902	6.015	1908874	712877	138.774	38.846 #
38) L8 AR-1262-3	7.181	6.220	636093	1165764	49.917	38.018
39) L8 AR-1262-4	7.479	6.469	664109	778066	38.663	30.878
40) L8 AR-1262-5	7.777	6.714	1176574	1858463	31.838	34.106
41) L9 AR-1268-1	8.047	6.981	1329709	1750248	34.912	31.721

Data Path : P:\HPCHEM1\ECD_O\Data\PO060118\
 Data File : PO045289.D
 Signal(s) : Signal #1: ECD1A.CH Signal #2: ECD2B.CH
 Acq On : 31 May 2018 18:00
 Operator : SM/UA
 Sample : J3178-13
 Misc :
 ALS Vial : 8 Sample Multiplier: 1

Instrument :
 ECD_O
 ClientSampleId :
 WC-9

Integration File signal 1: autoint1.e
 Integration File signal 2: autoint2.e
 Quant Time: Jun 01 00:54:50 2018
 Quant Method : P:\HPCHEM1\ECD_O\methods\PO053018.M
 Quant Title : GC EXTRACTABLES
 QLast Update : Thu May 31 04:53:22 2018
 Response via : Initial Calibration
 Integrator: ChemStation 6890 Scale Mode: Small noise peaks clipped

Volume Inj. : 2 µl
 Signal #1 Phase : ZB-MR1 Signal #2 Phase: ZB-MR2
 Signal #1 Info : 30Mx0.32mmx 0.50µ Signal #2 Info : 30M x 0.32mm x 0.25µm

	Compound	RT#1	RT#2	Resp#1	Resp#2	ng/ml	ng/ml
42)	L9 AR-1268-2	8.124	7.047	1238598	2057226	36.354	40.288
43)	L9 AR-1268-3	0.000	7.235	0	556110	N.D.	12.567 #
44)	L9 AR-1268-4	8.675	7.535	811092	993686	66.587	57.094
45)	L9 AR-1268-5	9.012	7.793	920025	1153199	10.757	9.216

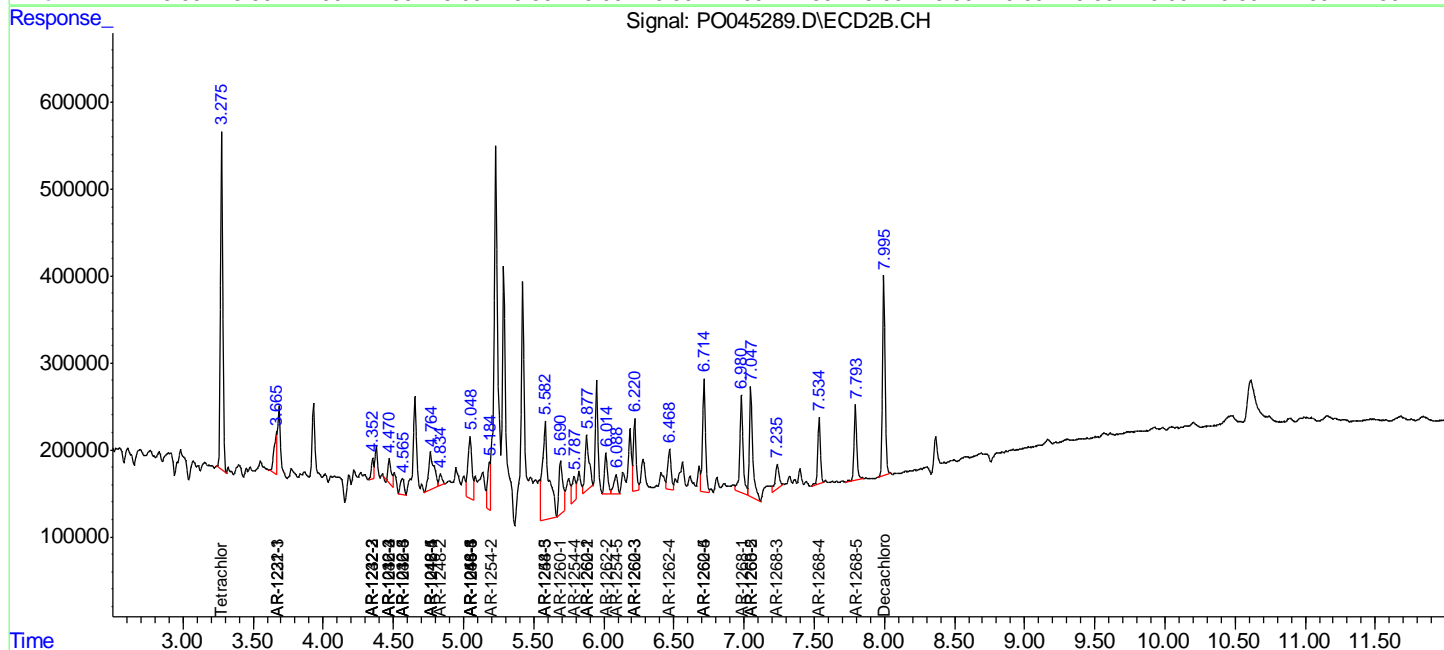
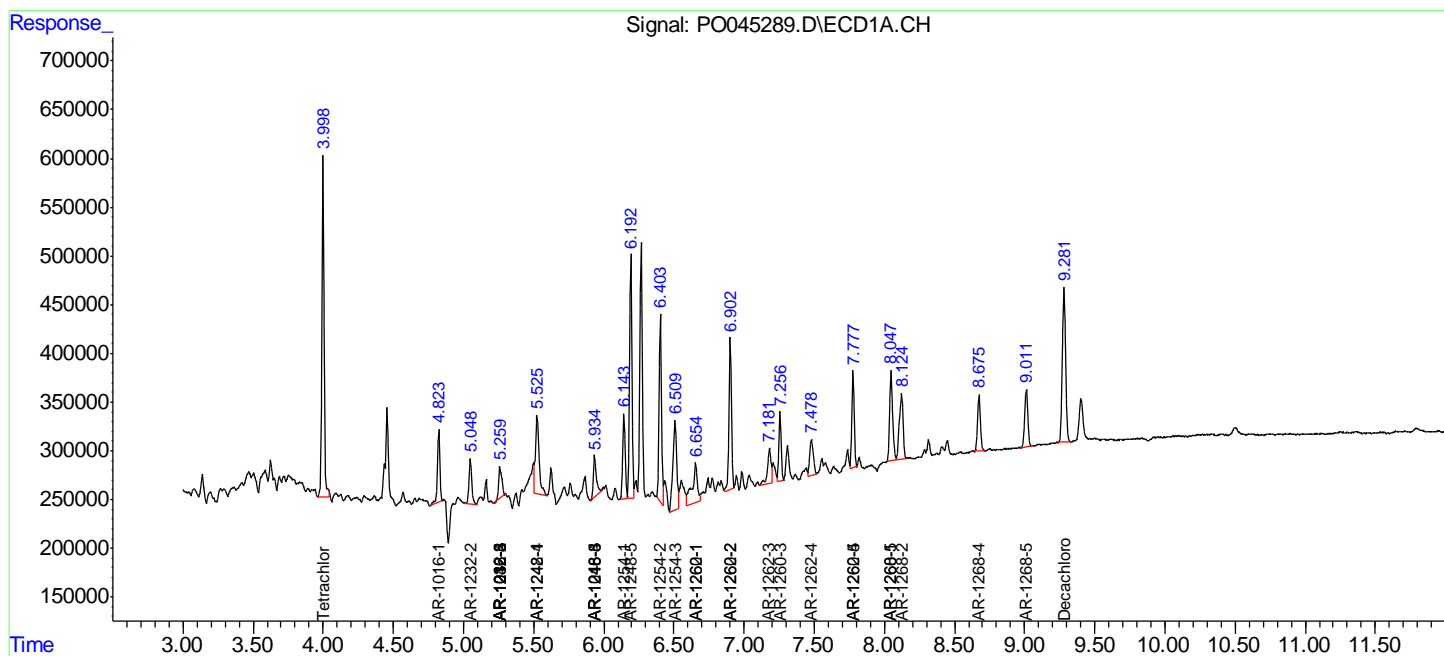
(f)=RT Delta > 1/2 Window (#)=Amounts differ by > 25% (m)=manual int.

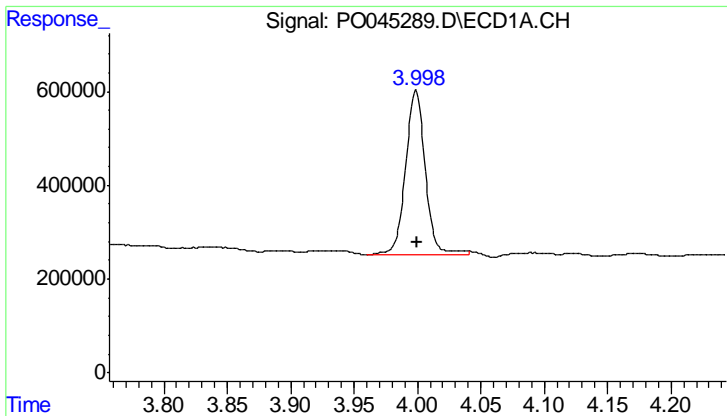
Data Path : P:\HPCHEM1\ECD_O\Data\PO060118\
 Data File : PO045289.D
 Signal(s) : Signal #1: ECD1A.CH Signal #2: ECD2B.CH
 Acq On : 31 May 2018 18:00
 Operator : SM/UA
 Sample : J3178-13
 Misc :
 ALS Vial : 8 Sample Multiplier: 1

Instrument :
 ECD_O
 Client Sampled :
 WC-9

Integration File signal 1: autoint1.e
 Integration File signal 2: autoint2.e
 Quant Time: Jun 01 00:54:50 2018
 Quant Method : P:\HPCHEM1\ECD_O\methods\PO053018.M
 Quant Title : GC EXTRACTABLES
 QLast Update : Thu May 31 04:53:22 2018
 Response via : Initial Calibration
 Integrator: ChemStation 6890 Scale Mode: Small noise peaks clipped

Volume Inj. : 2 µl
 Signal #1 Phase : ZB-MR1 Signal #2 Phase: ZB-MR2
 Signal #1 Info : 30Mx0.32mmx 0.50µ Signal #2 Info : 30M x 0.32mm x 0.25µm

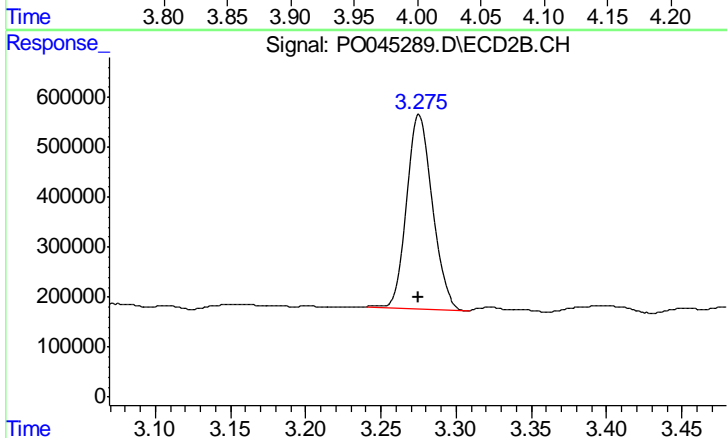




#1 Tetrachloro-m-xylene

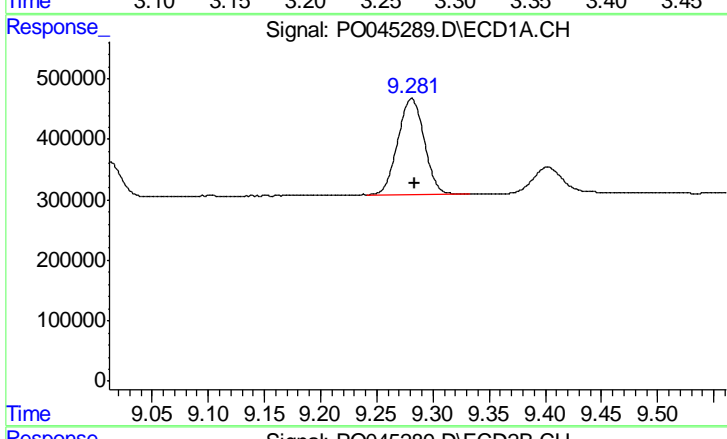
R.T.: 3.999 min
 Delta R.T.: -0.002 min
 Response: 3777448
 Conc: 18.08 ng/ml

Instrument :
 ECD_O
 ClientSampled :
 WC-9



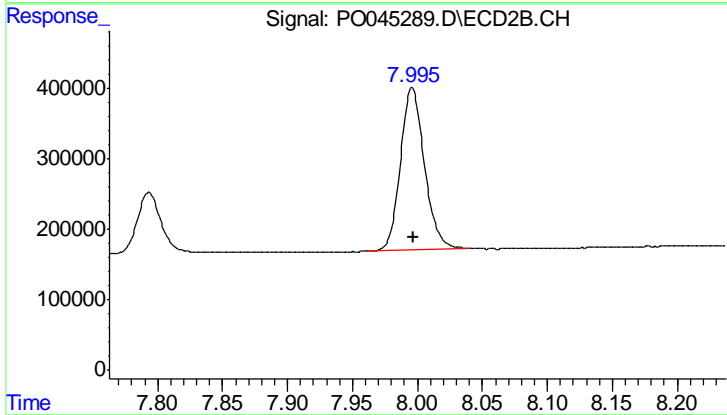
#1 Tetrachloro-m-xylene

R.T.: 3.275 min
 Delta R.T.: 0.000 min
 Response: 4528486
 Conc: 16.33 ng/ml



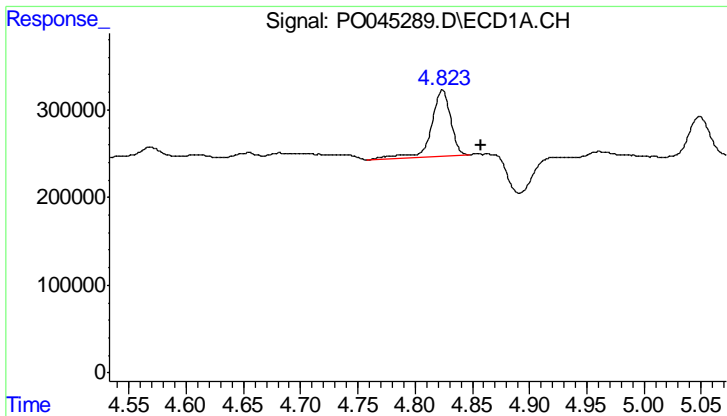
#2 Decachlorobiphenyl

R.T.: 9.281 min
 Delta R.T.: -0.002 min
 Response: 2599828
 Conc: 11.32 ng/ml



#2 Decachlorobiphenyl

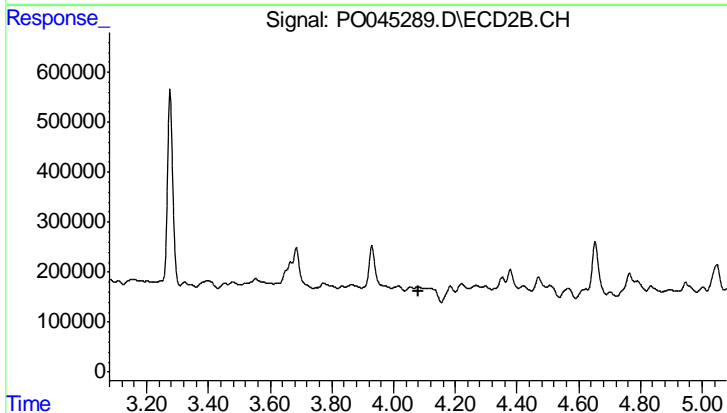
R.T.: 7.996 min
 Delta R.T.: -0.001 min
 Response: 2945444
 Conc: 10.45 ng/ml



#3 AR-1016-1

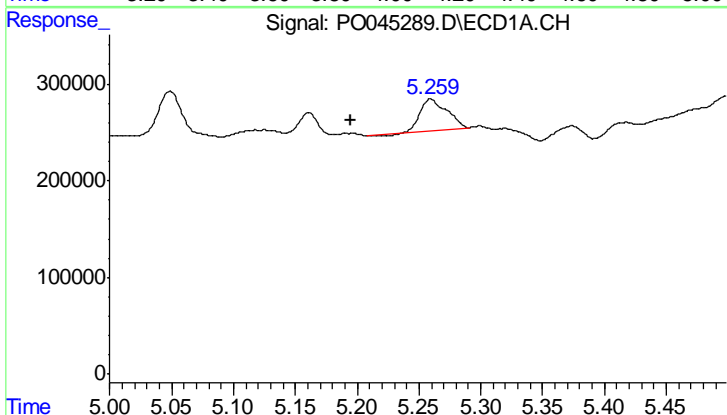
R.T.: 4.824 min
 Delta R.T.: -0.034 min
 Response: 881804
 Conc: 166.98 ng/ml

Instrument :
 ECD_O
 ClientSampled :
 WC-9



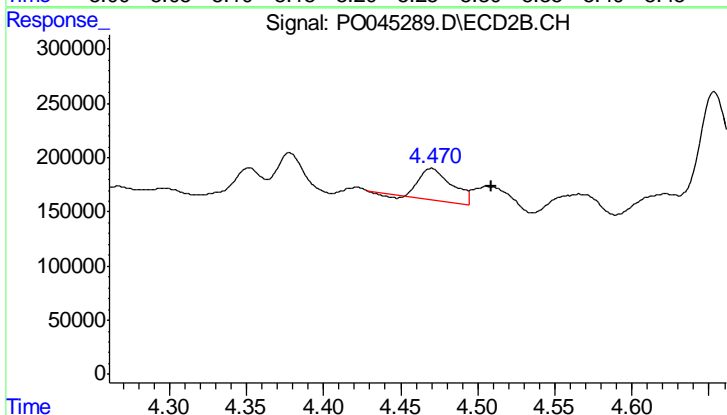
#3 AR-1016-1

R.T.: 0.000 min
 Exp R.T.: 4.079 min
 Response: 0
 Conc: N.D.



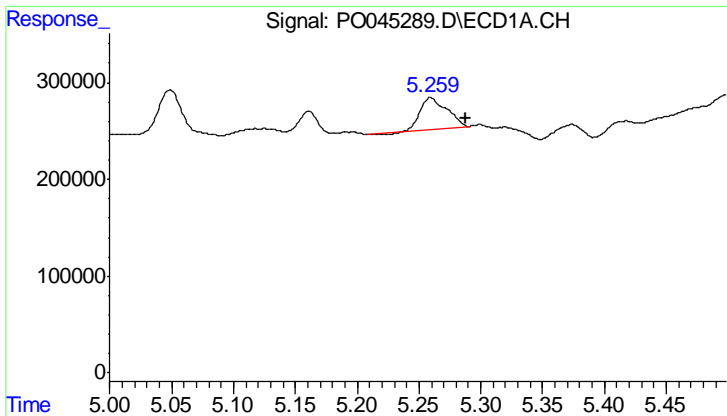
#4 AR-1016-2

R.T.: 5.259 min
 Delta R.T.: 0.065 min
 Response: 473132
 Conc: 70.90 ng/ml



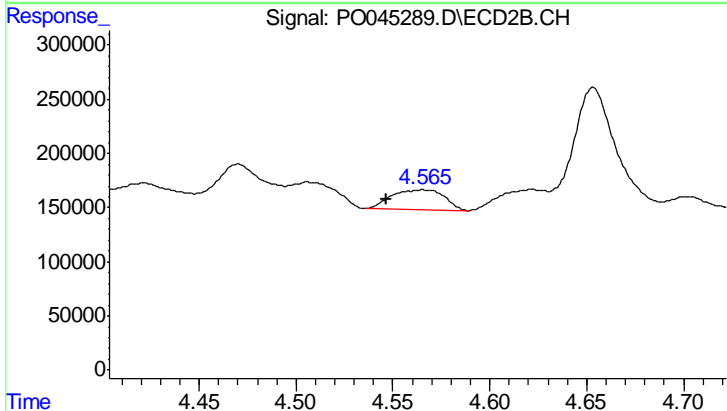
#4 AR-1016-2

R.T.: 4.470 min
 Delta R.T.: -0.039 min
 Response: 411810
 Conc: 69.84 ng/ml

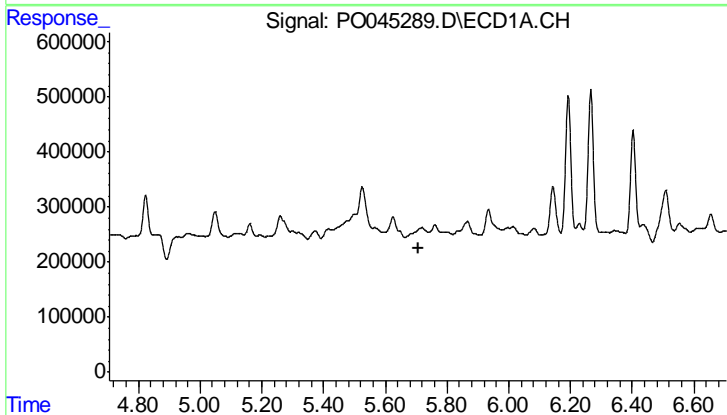


#5 AR-1016-3
 R.T.: 5.259 min
 Delta R.T.: -0.029 min
 Response: 473132
 Conc: 84.56 ng/ml

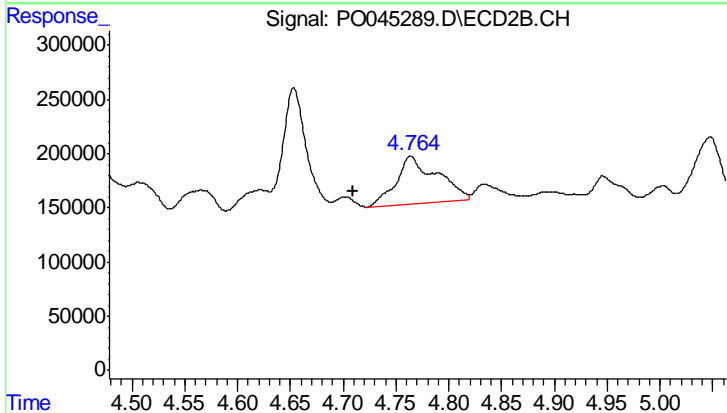
Instrument :
 ECD_O
 ClientSampled :
 WC-9



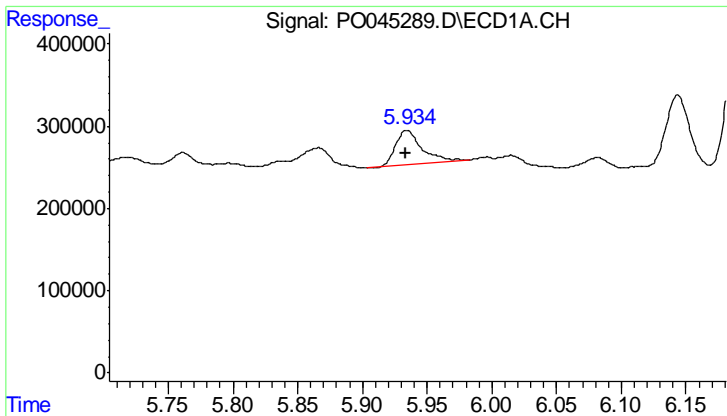
#5 AR-1016-3
 R.T.: 4.566 min
 Delta R.T.: 0.019 min
 Response: 349991
 Conc: 49.96 ng/ml



#6 AR-1016-4
 R.T.: 0.000 min
 Exp R.T. : 5.706 min
 Response: 0
 Conc: N.D.



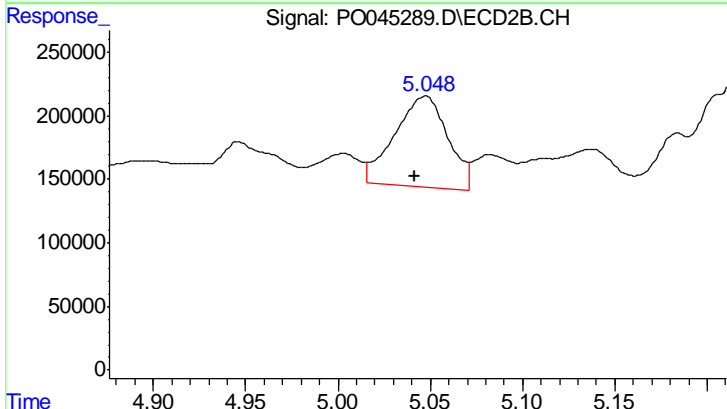
#6 AR-1016-4
 R.T.: 4.764 min
 Delta R.T.: 0.054 min
 Response: 1174448
 Conc: 157.76 ng/ml



#7 AR-1016-5

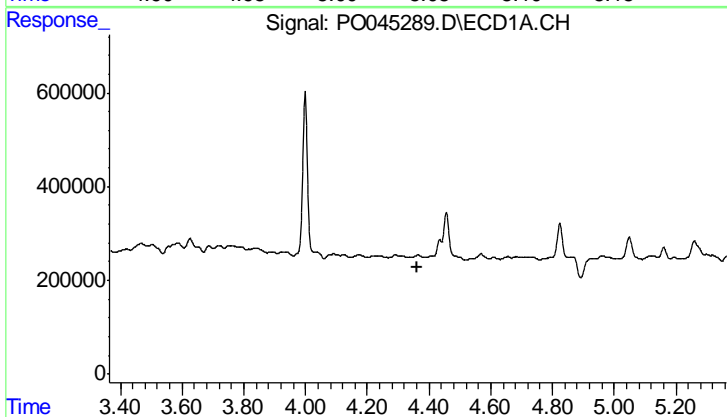
R.T.: 5.935 min
 Delta R.T.: 0.002 min
 Response: 590218
 Conc: 117.46 ng/ml

Instrument :
 ECD_O
 ClientSampled :
 WC-9



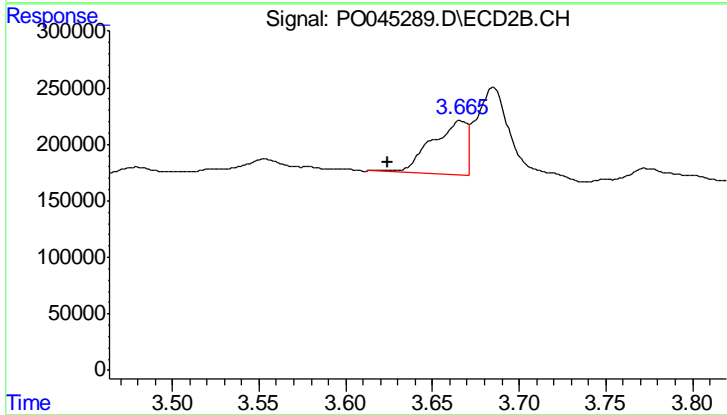
#7 AR-1016-5

R.T.: 5.048 min
 Delta R.T.: 0.006 min
 Response: 1449956
 Conc: 193.39 ng/ml



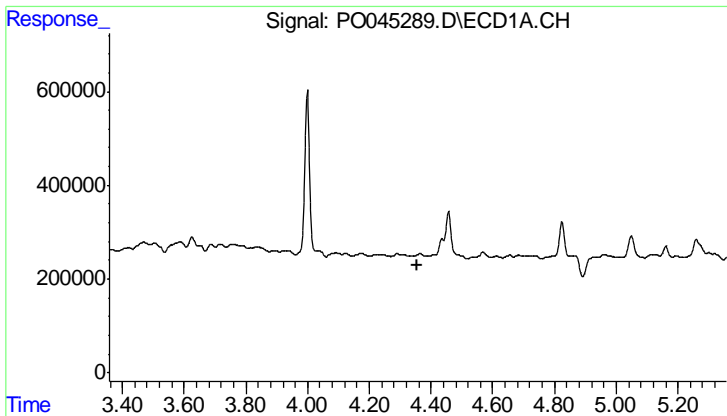
#10 AR-1221-3

R.T.: 0.000 min
 Exp R.T. : 4.364 min
 Response: 0
 Conc: N.D.



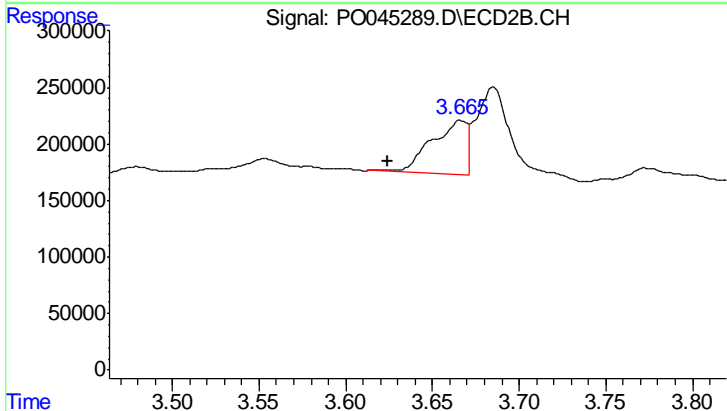
#10 AR-1221-3

R.T.: 3.666 min
 Delta R.T.: 0.042 min
 Response: 684441
 Conc: 55.37 ng/ml

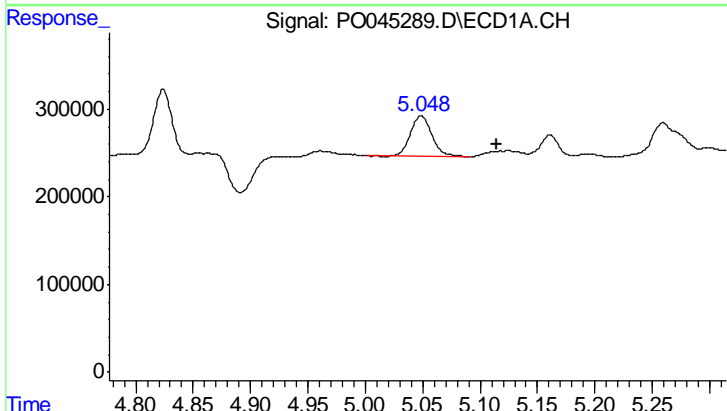


#11 AR-1232-1
 R.T.: 0.000 min
 Exp R.T.: 4.357 min
 Response: 0
 Conc: N.D.

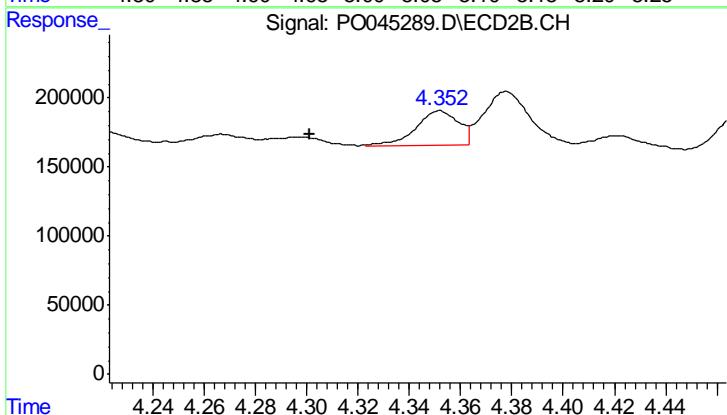
Instrument :
 ECD_O
 ClientSampled :
 WC-9



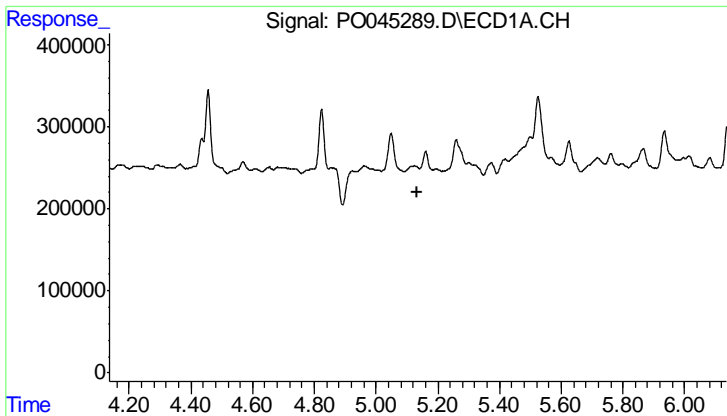
#11 AR-1232-1
 R.T.: 3.666 min
 Delta R.T.: 0.041 min
 Response: 684441
 Conc: 117.87 ng/ml



#12 AR-1232-2
 R.T.: 5.049 min
 Delta R.T.: -0.066 min
 Response: 619515
 Conc: 188.15 ng/ml



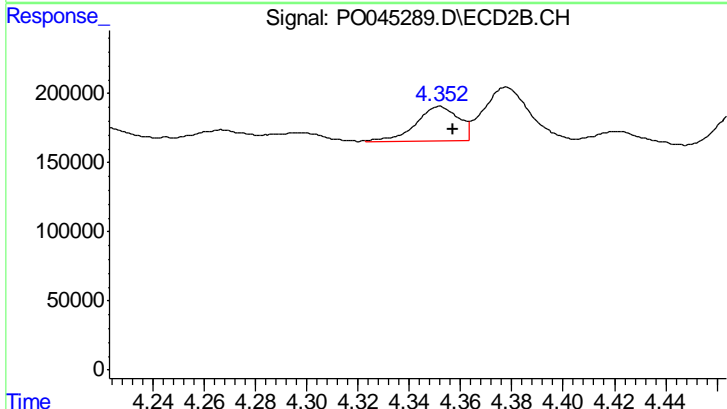
#12 AR-1232-2
 R.T.: 4.352 min
 Delta R.T.: 0.050 min
 Response: 282711
 Conc: 22.38 ng/ml



#13 AR-1232-3

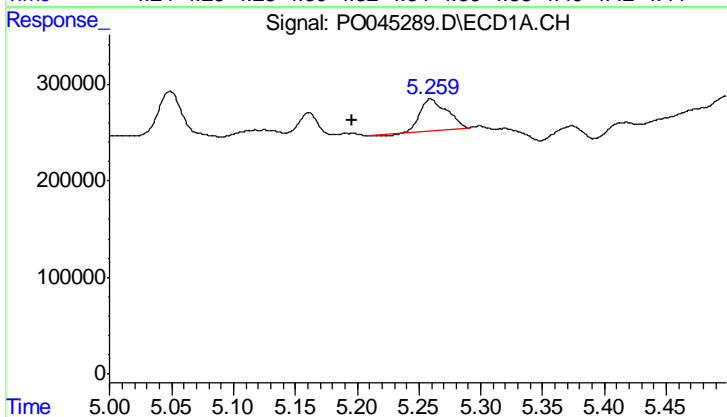
R.T.: 0.000 min
 Exp R.T.: 5.136 min
 Response: 0
 Conc: N.D.

Instrument :
 ECD_O
 ClientSampled :
 WC-9



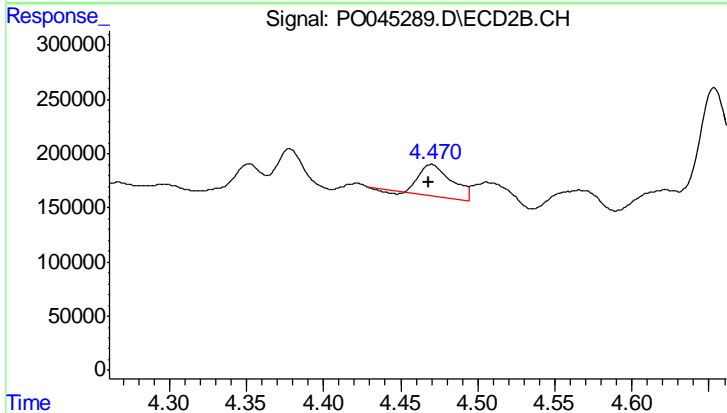
#13 AR-1232-3

R.T.: 4.352 min
 Delta R.T.: -0.006 min
 Response: 282711
 Conc: 54.23 ng/ml



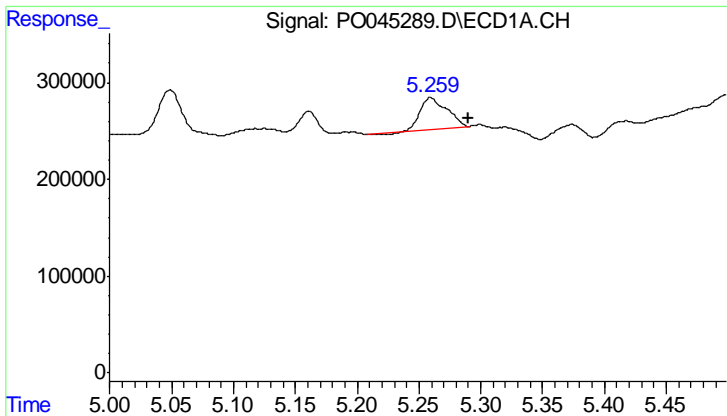
#14 AR-1232-4

R.T.: 5.259 min
 Delta R.T.: 0.064 min
 Response: 473132
 Conc: 138.25 ng/ml



#14 AR-1232-4

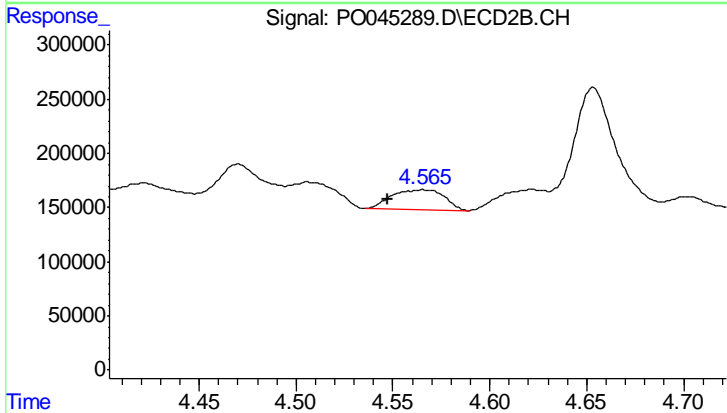
R.T.: 4.470 min
 Delta R.T.: 0.002 min
 Response: 411810
 Conc: 108.04 ng/ml



#15 AR-1232-5

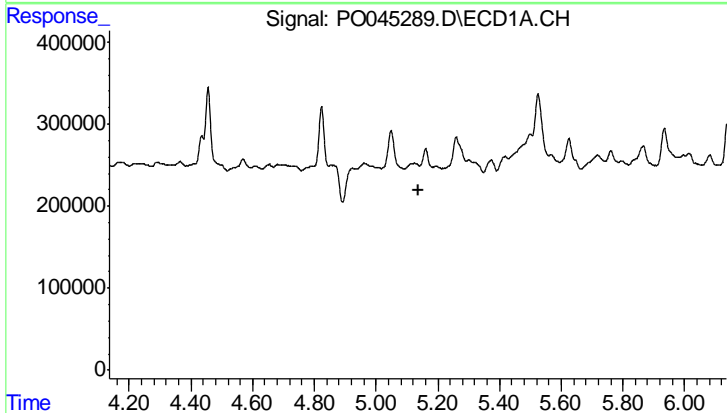
R.T.: 5.259 min
 Delta R.T.: -0.031 min
 Response: 473132
 Conc: 176.07 ng/ml

Instrument :
 ECD_O
 ClientSampled :
 WC-9



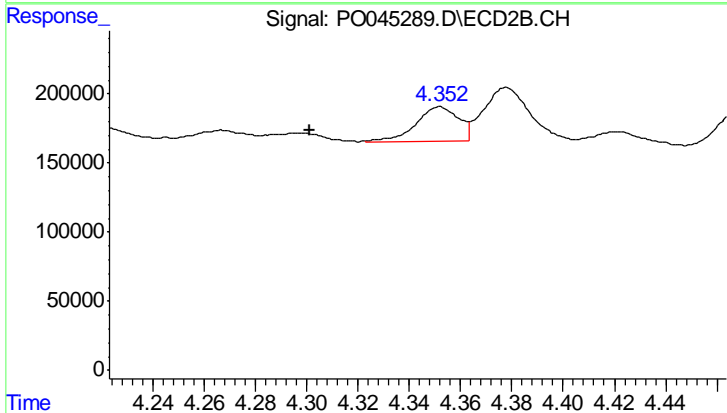
#15 AR-1232-5

R.T.: 4.566 min
 Delta R.T.: 0.019 min
 Response: 349991
 Conc: 103.47 ng/ml



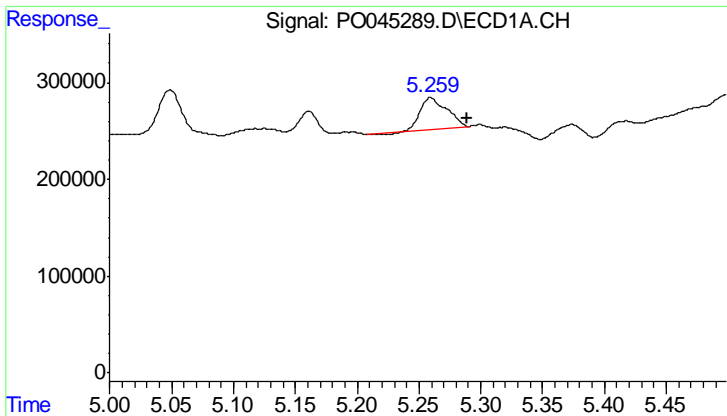
#17 AR-1242-2

R.T.: 0.000 min
 Exp R.T. : 5.136 min
 Response: 0
 Conc: N.D.



#17 AR-1242-2

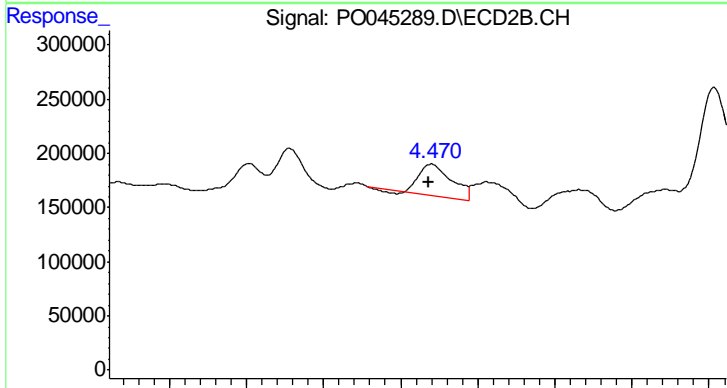
R.T.: 4.352 min
 Delta R.T.: 0.051 min
 Response: 282711
 Conc: 13.82 ng/ml



#18 AR-1242-3

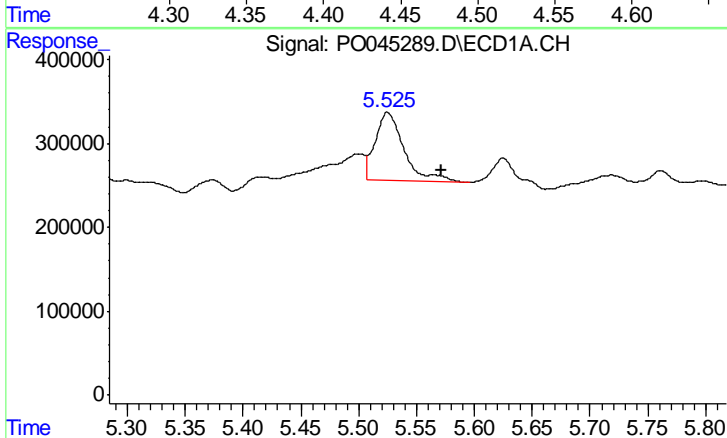
R.T.: 5.259 min
 Delta R.T.: -0.030 min
 Response: 473132
 Conc: 106.37 ng/ml

Instrument :
 ECD_O
 ClientSampled :
 WC-9



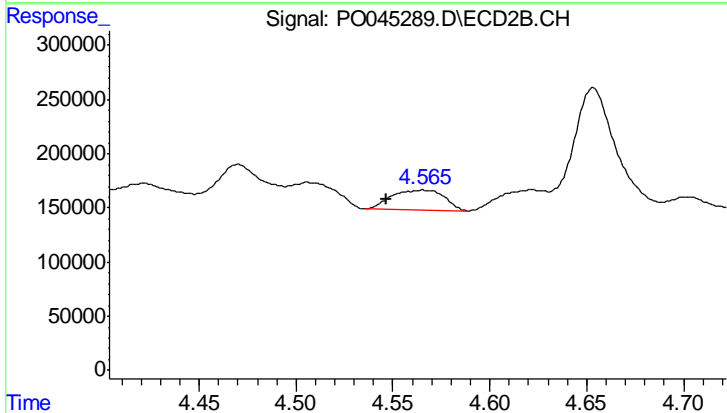
#18 AR-1242-3

R.T.: 4.470 min
 Delta R.T.: 0.002 min
 Response: 411810
 Conc: 67.00 ng/ml



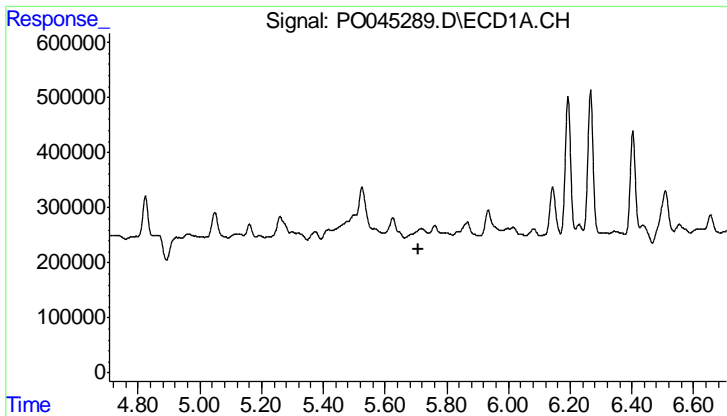
#19 AR-1242-4

R.T.: 5.525 min
 Delta R.T.: -0.047 min
 Response: 1425743
 Conc: 328.51 ng/ml



#19 AR-1242-4

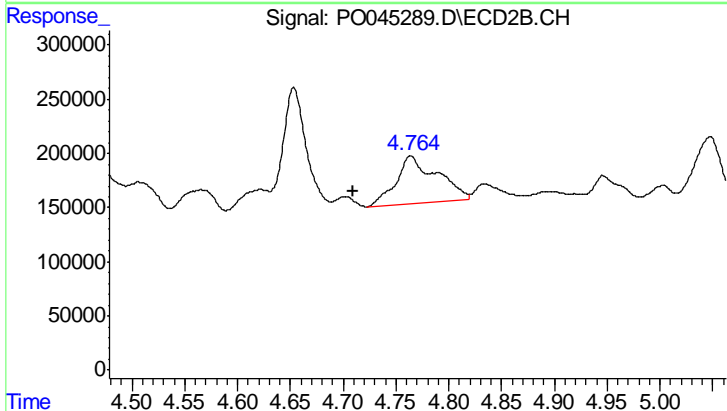
R.T.: 4.566 min
 Delta R.T.: 0.019 min
 Response: 349991
 Conc: 58.51 ng/ml



#20 AR-1242-5

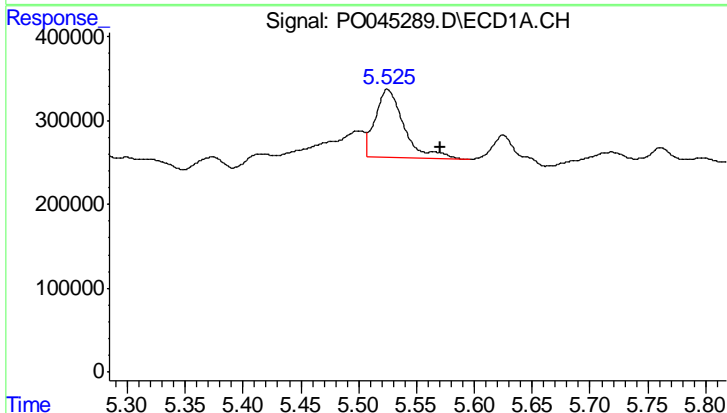
R.T.: 0.000 min
 Exp R.T.: 5.707 min
 Response: 0
 Conc: N.D.

Instrument :
 ECD_O
 ClientSampleId :
 WC-9



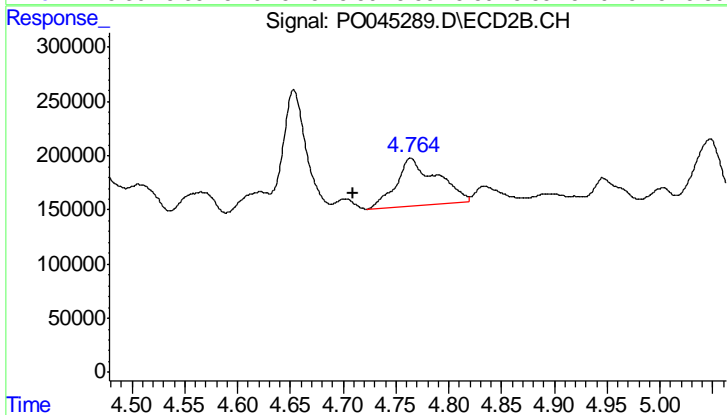
#20 AR-1242-5

R.T.: 4.764 min
 Delta R.T.: 0.054 min
 Response: 1174448
 Conc: 179.99 ng/ml



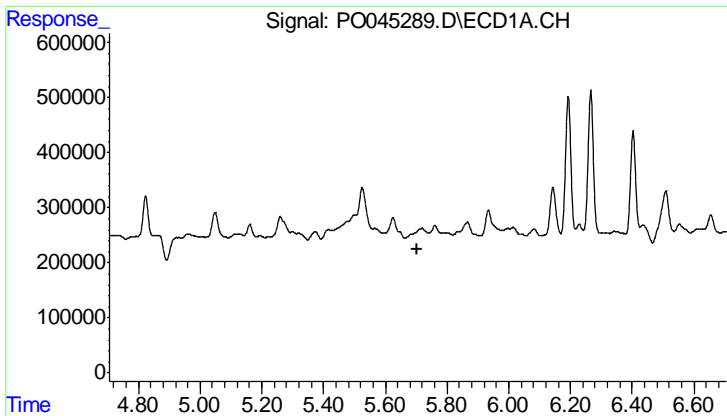
#21 AR-1248-1

R.T.: 5.525 min
 Delta R.T.: -0.045 min
 Response: 1425743
 Conc: 201.02 ng/ml



#21 AR-1248-1

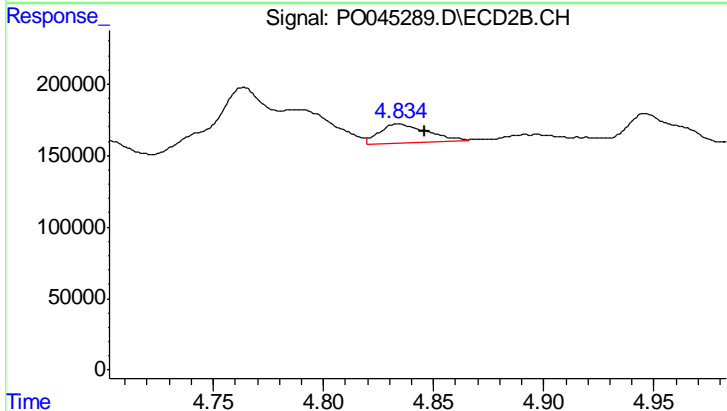
R.T.: 4.764 min
 Delta R.T.: 0.055 min
 Response: 1174448
 Conc: 110.65 ng/ml



#22 AR-1248-2

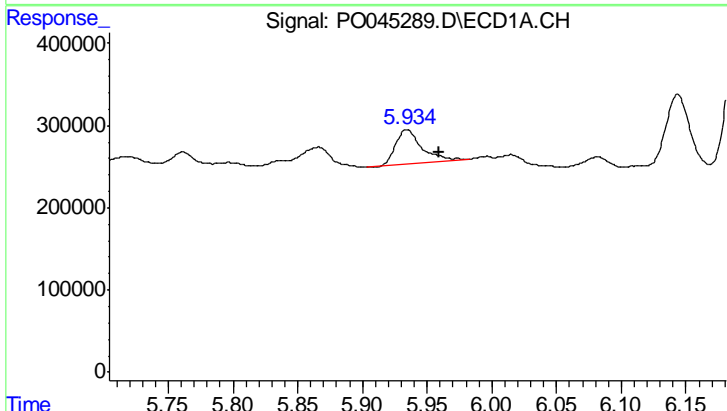
R.T.: 0.000 min
 Exp R.T.: 5.705 min
 Response: 0
 Conc: N.D.

Instrument :
 ECD_O
 ClientSampled :
 WC-9



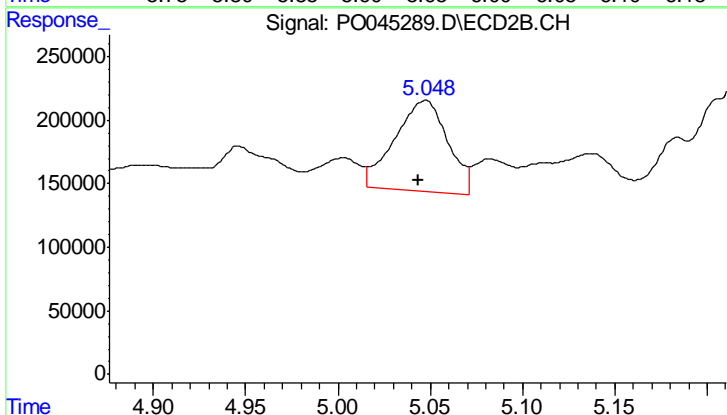
#22 AR-1248-2

R.T.: 4.834 min
 Delta R.T.: -0.012 min
 Response: 196423
 Conc: 19.09 ng/ml



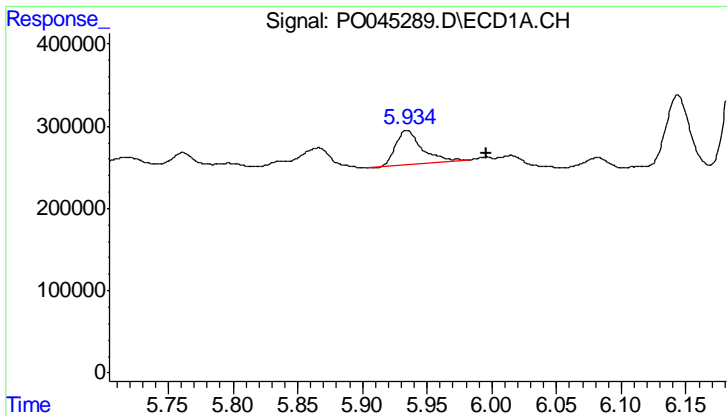
#23 AR-1248-3

R.T.: 5.935 min
 Delta R.T.: -0.025 min
 Response: 590218
 Conc: 68.07 ng/ml



#23 AR-1248-3

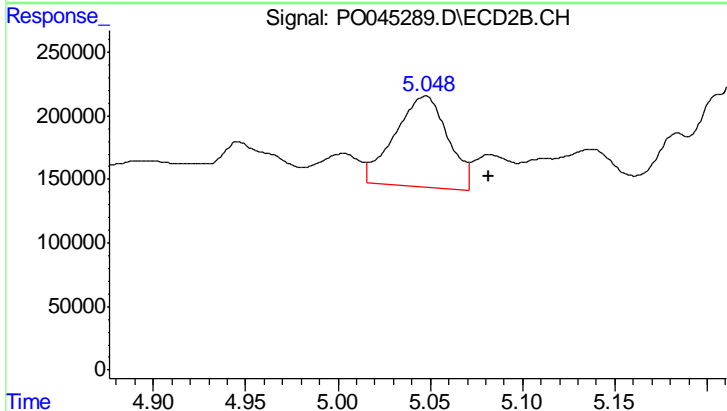
R.T.: 5.048 min
 Delta R.T.: 0.004 min
 Response: 1449956
 Conc: 90.17 ng/ml



#24 AR-1248-4

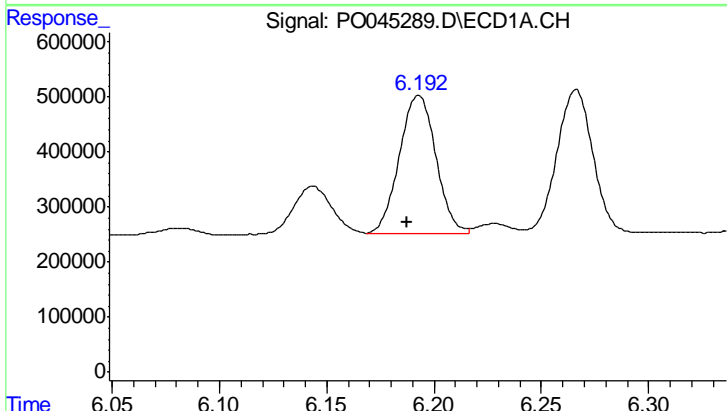
R.T.: 5.935 min
 Delta R.T.: -0.062 min
 Response: 590218
 Conc: 66.67 ng/ml

Instrument :
 ECD_O
 ClientSampled :
 WC-9



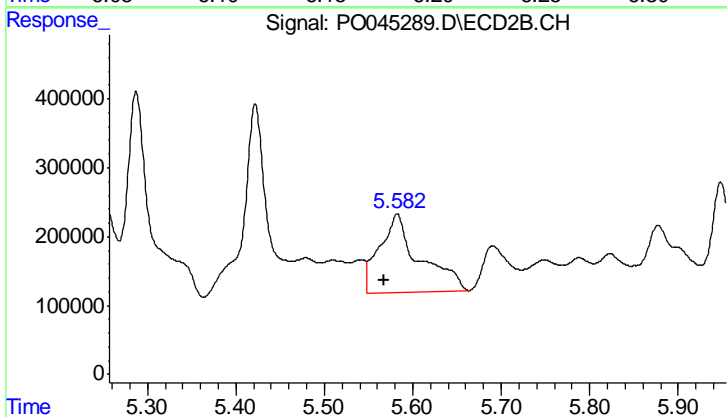
#24 AR-1248-4

R.T.: 5.048 min
 Delta R.T.: -0.034 min
 Response: 1449956
 Conc: 108.22 ng/ml



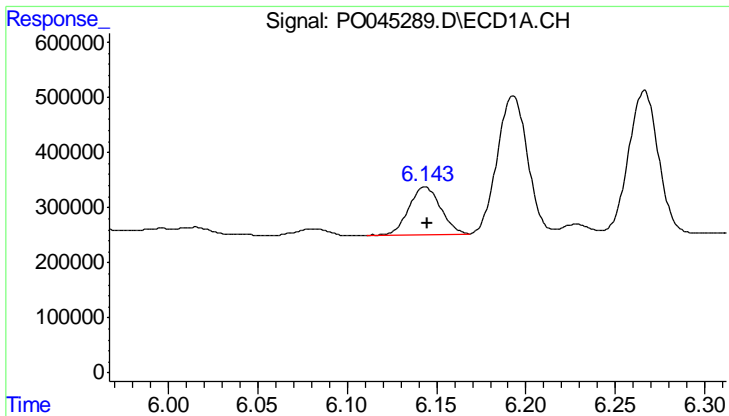
#25 AR-1248-5

R.T.: 6.193 min
 Delta R.T.: 0.005 min
 Response: 2995277
 Conc: 536.37 ng/ml



#25 AR-1248-5

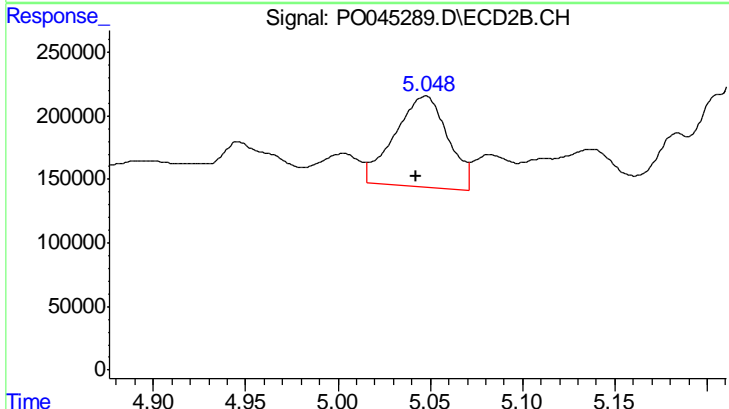
R.T.: 5.583 min
 Delta R.T.: 0.015 min
 Response: 3550661
 Conc: 493.51 ng/ml



#26 AR-1254-1

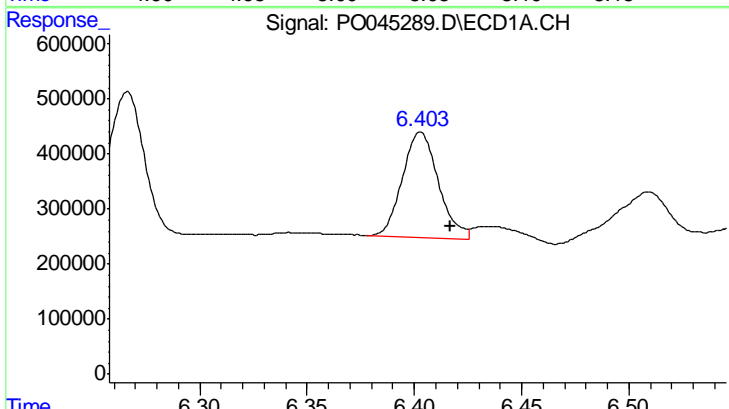
R.T.: 6.144 min
 Delta R.T.: -0.001 min
 Response: 1102058
 Conc: 79.69 ng/ml

Instrument :
 ECD_O
 ClientSampled :
 WC-9



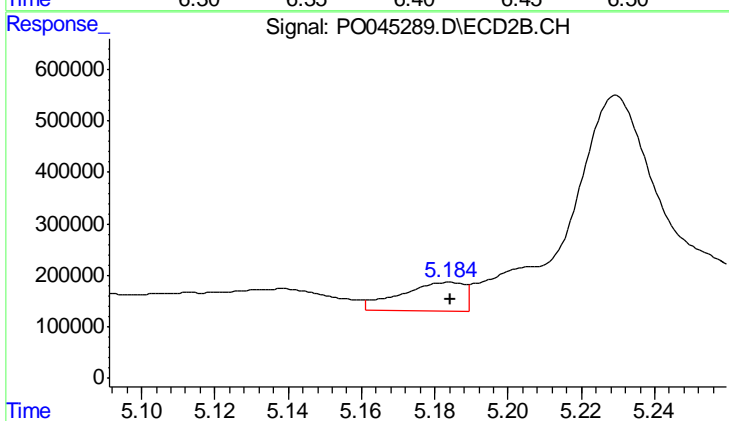
#26 AR-1254-1

R.T.: 5.048 min
 Delta R.T.: 0.006 min
 Response: 1449956
 Conc: 78.24 ng/ml



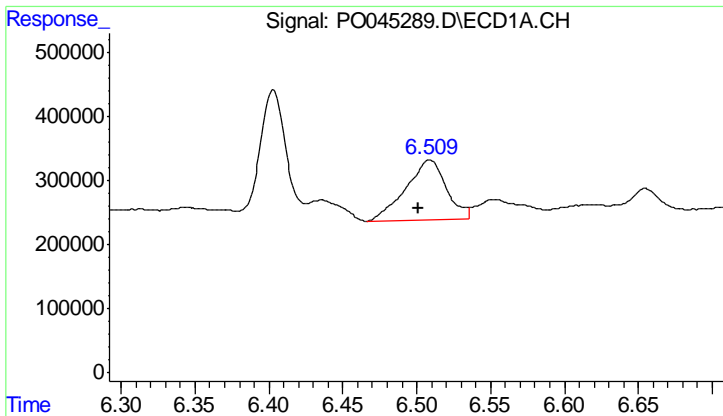
#27 AR-1254-2

R.T.: 6.403 min
 Delta R.T.: -0.014 min
 Response: 2253169
 Conc: 234.47 ng/ml



#27 AR-1254-2

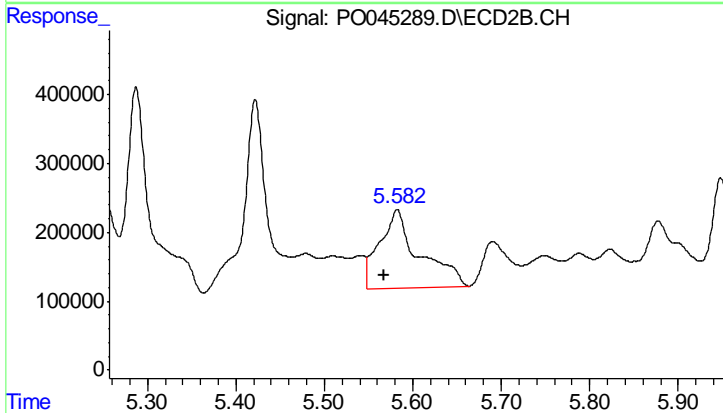
R.T.: 5.184 min
 Delta R.T.: 0.000 min
 Response: 680479
 Conc: 42.21 ng/ml



#28 AR-1254-3

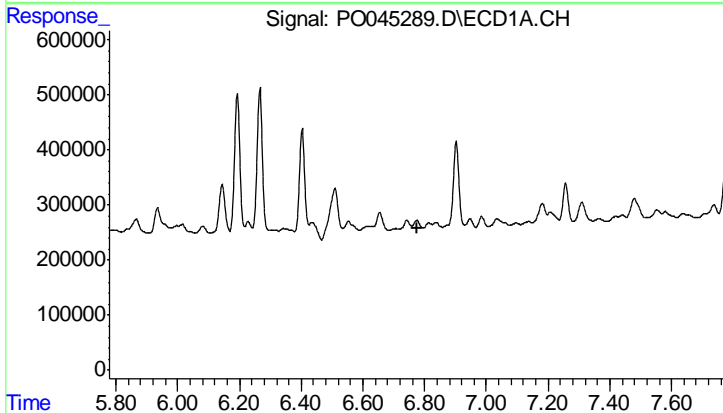
R.T.: 6.509 min
 Delta R.T.: 0.008 min
 Response: 1768515
 Conc: 112.24 ng/ml

Instrument :
 ECD_O
 ClientSampled :
 WC-9



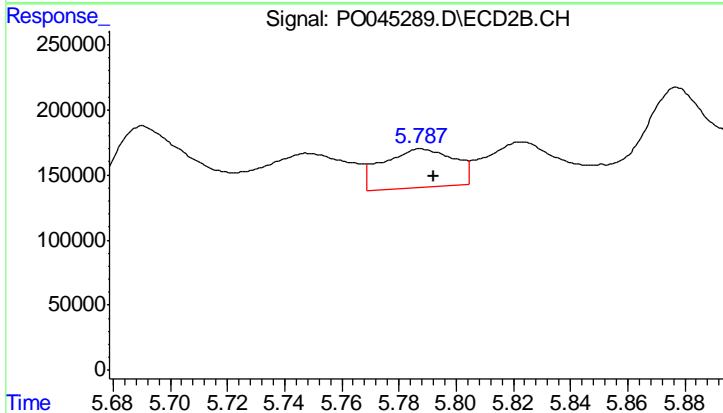
#28 AR-1254-3

R.T.: 5.583 min
 Delta R.T.: 0.015 min
 Response: 3550661
 Conc: 137.79 ng/ml



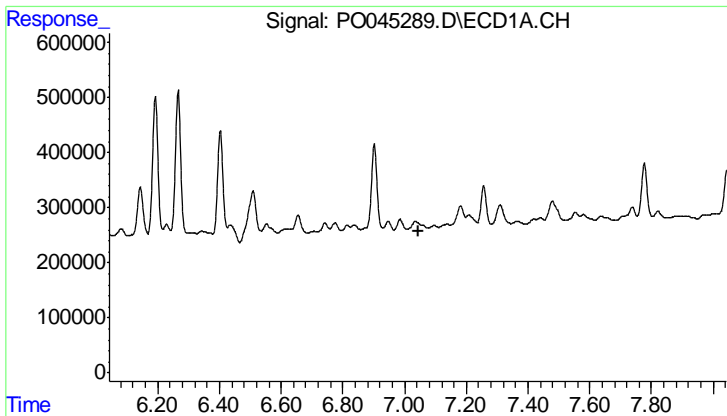
#29 AR-1254-4

R.T.: 0.000 min
 Exp R.T. : 6.778 min
 Response: 0
 Conc: N.D.



#29 AR-1254-4

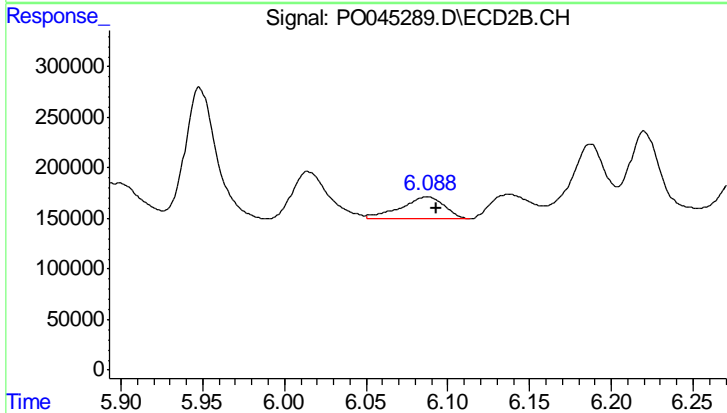
R.T.: 5.788 min
 Delta R.T.: -0.004 min
 Response: 514604
 Conc: 25.84 ng/ml



#30 AR-1254-5

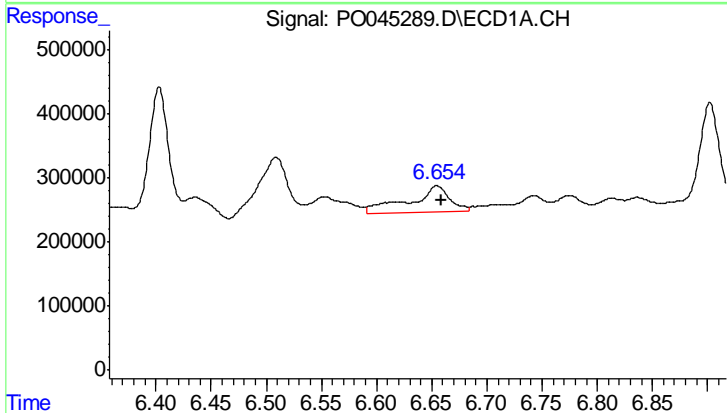
R.T.: 0.000 min
 Exp R.T.: 7.043 min
 Response: 0
 Conc: N.D.

Instrument :
 ECD_O
 ClientSampled :
 WC-9



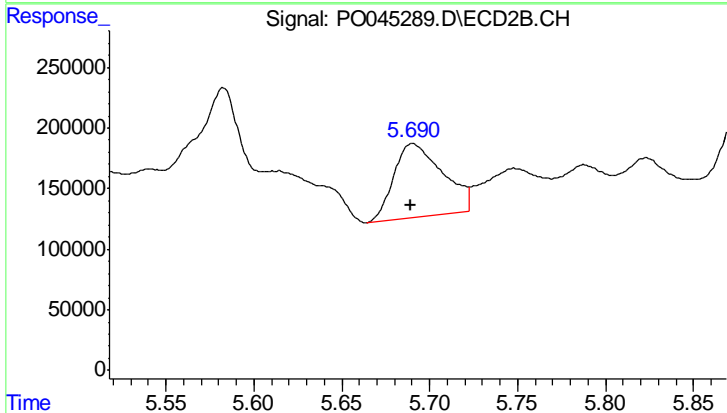
#30 AR-1254-5

R.T.: 6.087 min
 Delta R.T.: -0.005 min
 Response: 401750
 Conc: 33.54 ng/ml



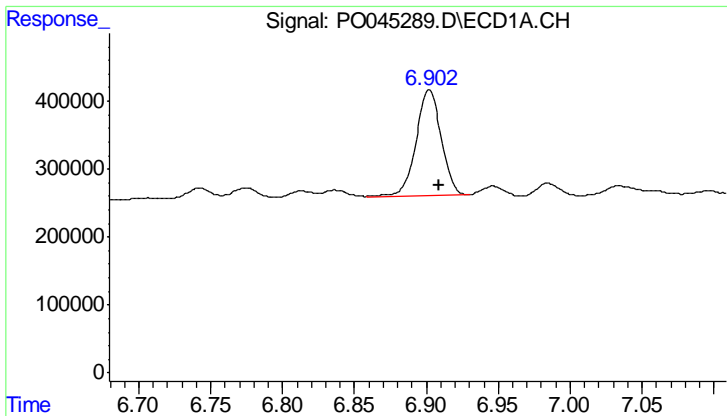
#31 AR-1260-1

R.T.: 6.655 min
 Delta R.T.: -0.005 min
 Response: 1036656
 Conc: 89.50 ng/ml



#31 AR-1260-1

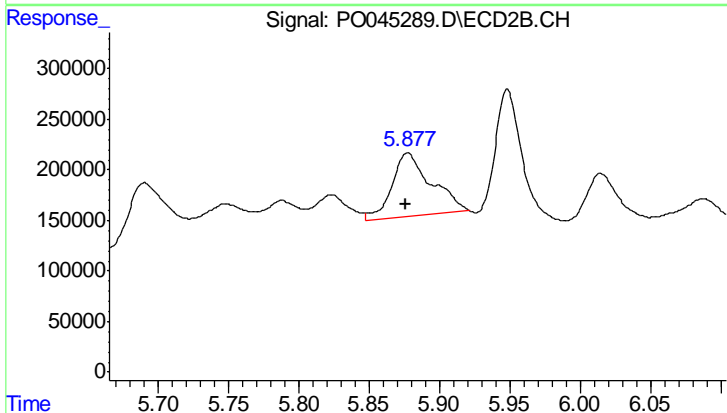
R.T.: 5.690 min
 Delta R.T.: 0.000 min
 Response: 1185267
 Conc: 72.41 ng/ml



#32 AR-1260-2

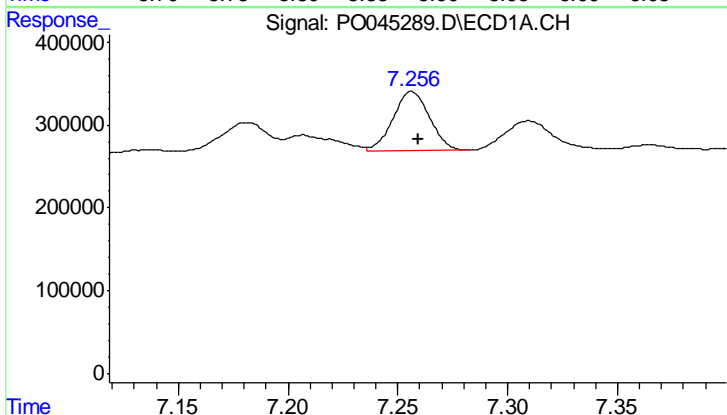
R.T.: 6.902 min
 Delta R.T.: -0.007 min
 Response: 1908874
 Conc: 125.45 ng/ml

Instrument :
 ECD_O
 ClientSampled :
 WC-9



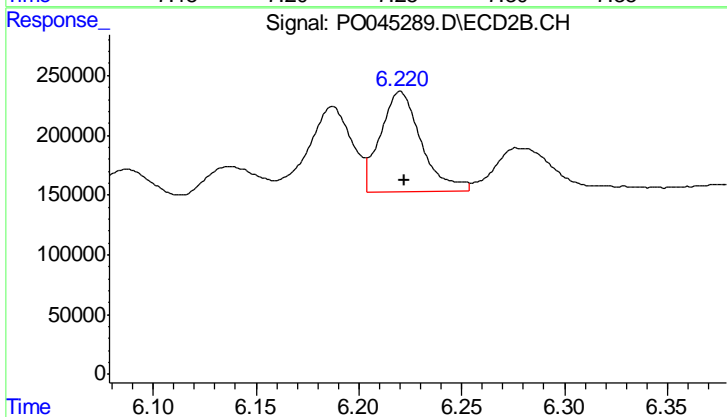
#32 AR-1260-2

R.T.: 5.877 min
 Delta R.T.: 0.001 min
 Response: 1217923
 Conc: 57.65 ng/ml



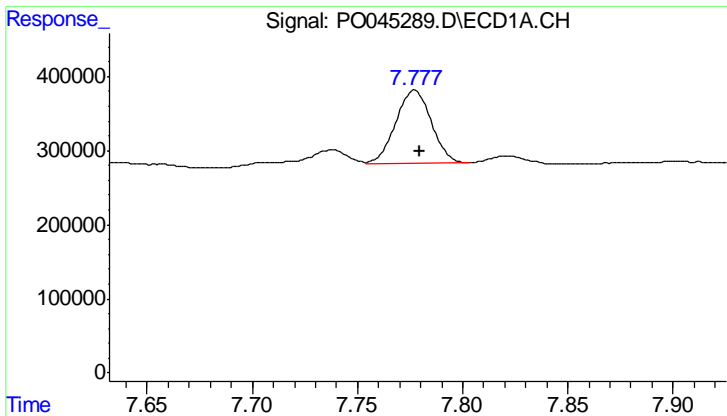
#33 AR-1260-3

R.T.: 7.256 min
 Delta R.T.: -0.003 min
 Response: 834783
 Conc: 65.75 ng/ml



#33 AR-1260-3

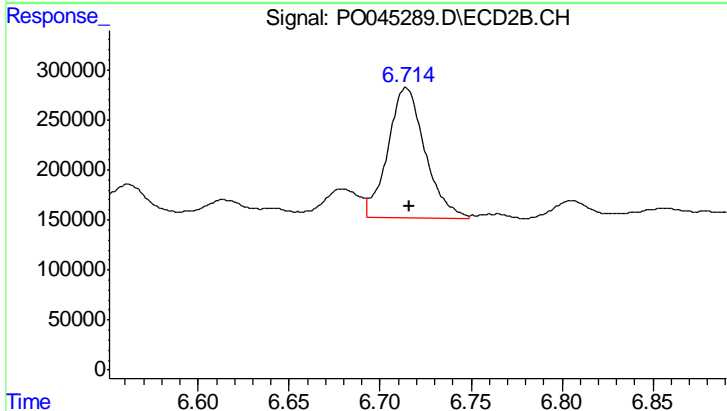
R.T.: 6.220 min
 Delta R.T.: -0.002 min
 Response: 1165764
 Conc: 61.59 ng/ml



#34 AR-1260-4

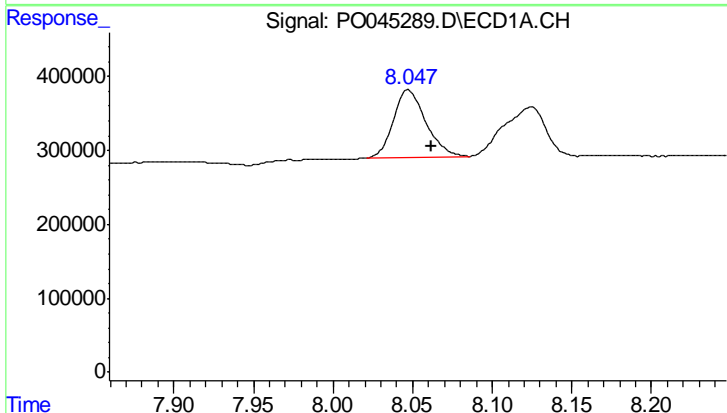
R.T.: 7.777 min
 Delta R.T.: -0.003 min
 Response: 1176574
 Conc: 41.42 ng/ml

Instrument :
 ECD_O
 ClientSampled :
 WC-9



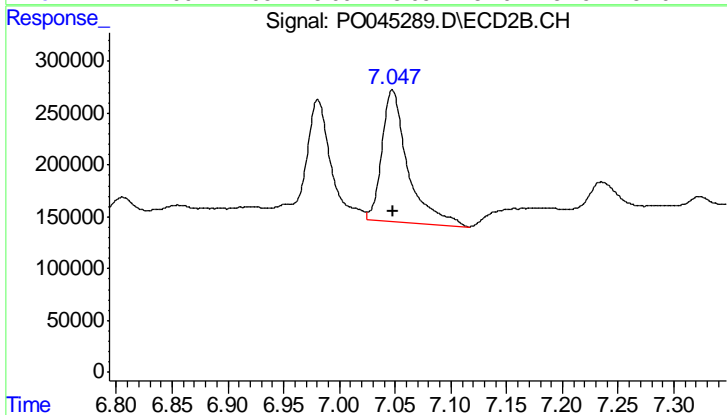
#34 AR-1260-4

R.T.: 6.714 min
 Delta R.T.: -0.002 min
 Response: 1858463
 Conc: 47.20 ng/ml



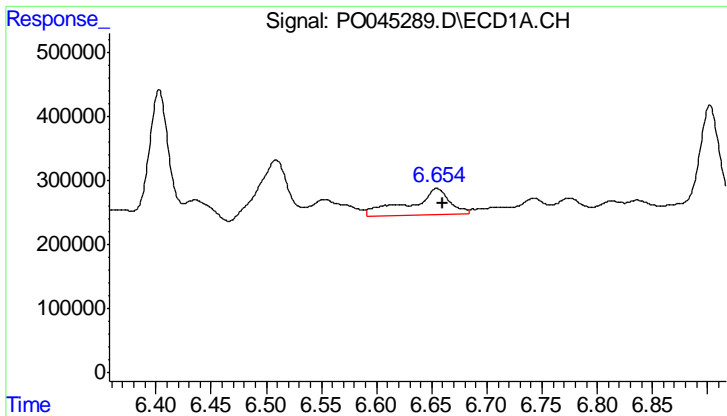
#35 AR-1260-5

R.T.: 8.047 min
 Delta R.T.: -0.014 min
 Response: 1329709
 Conc: 79.48 ng/ml



#35 AR-1260-5

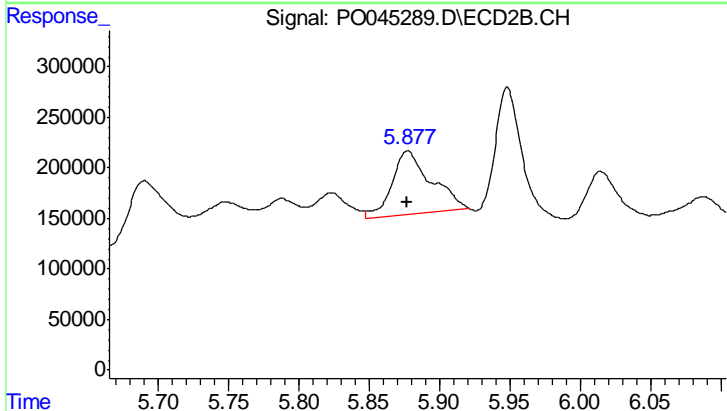
R.T.: 7.047 min
 Delta R.T.: 0.000 min
 Response: 2057226
 Conc: 74.74 ng/ml



#36 AR-1262-1

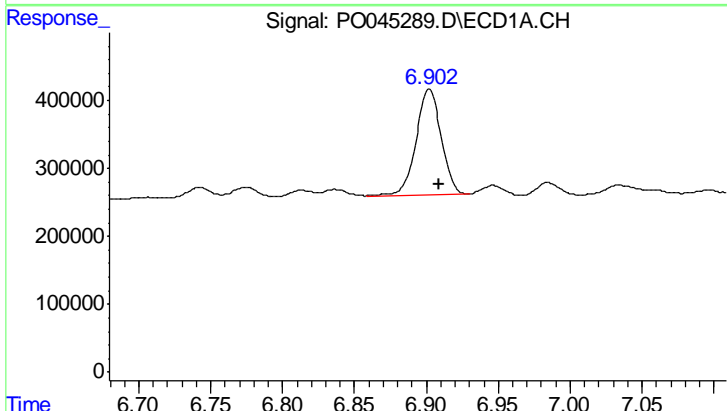
R.T.: 6.655 min
 Delta R.T.: -0.005 min
 Response: 1036656
 Conc: 95.22 ng/ml

Instrument :
 ECD_O
 ClientSampled :
 WC-9



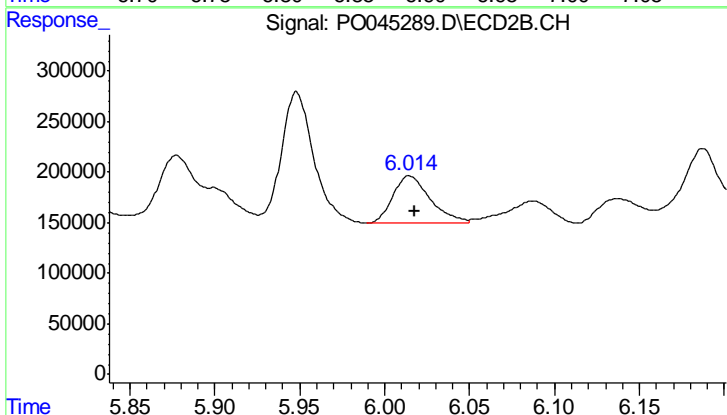
#36 AR-1262-1

R.T.: 5.877 min
 Delta R.T.: 0.000 min
 Response: 1217923
 Conc: 64.34 ng/ml



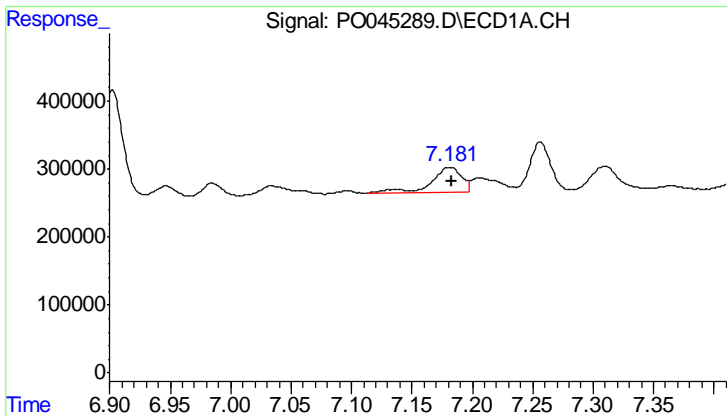
#37 AR-1262-2

R.T.: 6.902 min
 Delta R.T.: -0.007 min
 Response: 1908874
 Conc: 138.77 ng/ml



#37 AR-1262-2

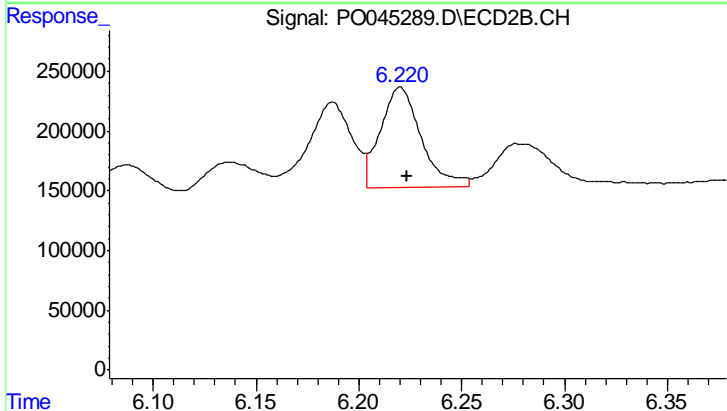
R.T.: 6.015 min
 Delta R.T.: -0.003 min
 Response: 712877
 Conc: 38.85 ng/ml



#38 AR-1262-3

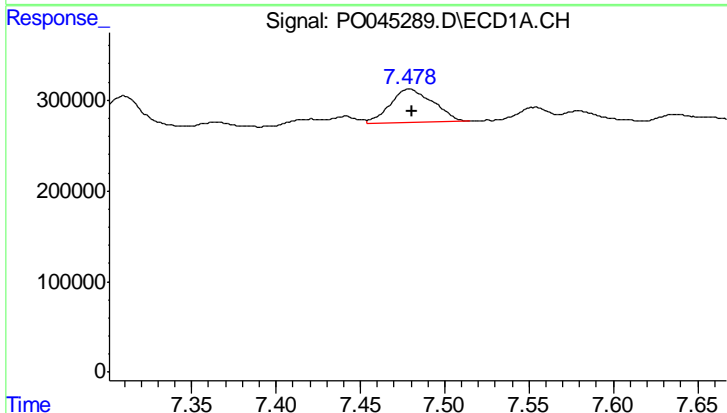
R.T.: 7.181 min
 Delta R.T.: -0.002 min
 Response: 636093
 Conc: 49.92 ng/ml

Instrument :
 ECD_O
 ClientSampleId :
 WC-9



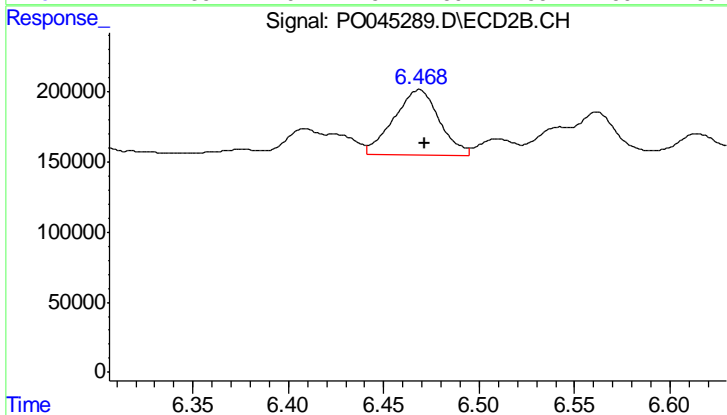
#38 AR-1262-3

R.T.: 6.220 min
 Delta R.T.: -0.003 min
 Response: 1165764
 Conc: 38.02 ng/ml



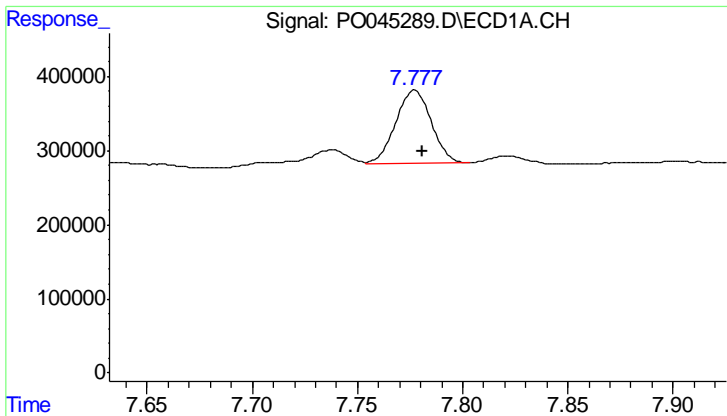
#39 AR-1262-4

R.T.: 7.479 min
 Delta R.T.: -0.002 min
 Response: 664109
 Conc: 38.66 ng/ml



#39 AR-1262-4

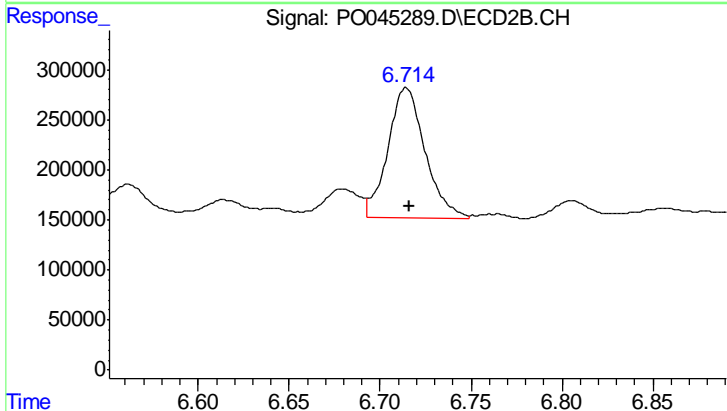
R.T.: 6.469 min
 Delta R.T.: -0.003 min
 Response: 778066
 Conc: 30.88 ng/ml



#40 AR-1262-5

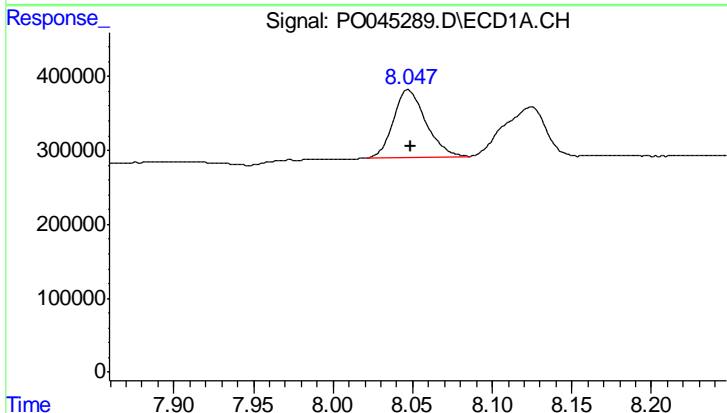
R.T.: 7.777 min
 Delta R.T.: -0.003 min
 Response: 1176574
 Conc: 31.84 ng/ml

Instrument :
 ECD_O
 ClientSampleId :
 WC-9



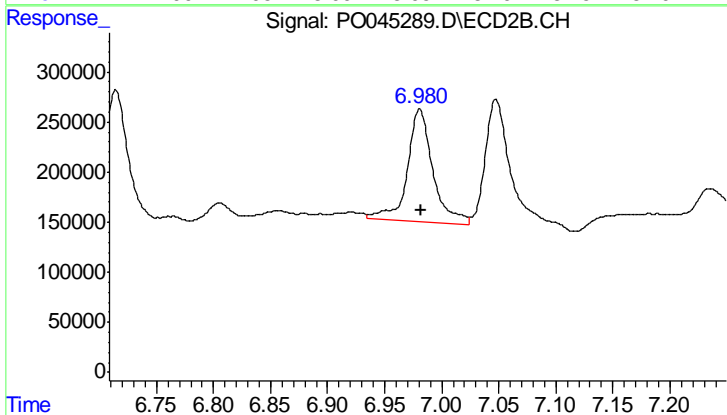
#40 AR-1262-5

R.T.: 6.714 min
 Delta R.T.: -0.002 min
 Response: 1858463
 Conc: 34.11 ng/ml



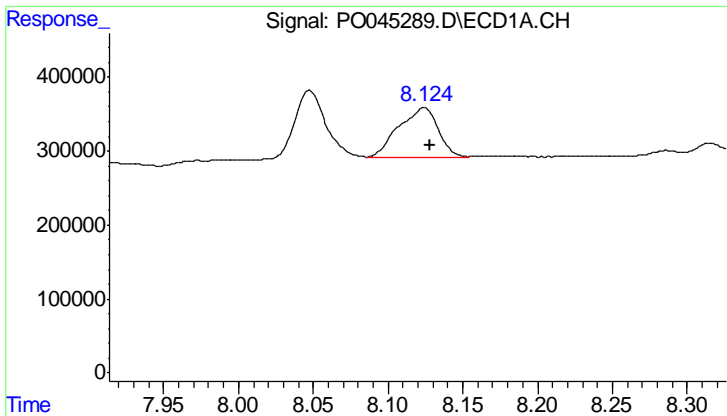
#41 AR-1268-1

R.T.: 8.047 min
 Delta R.T.: -0.002 min
 Response: 1329709
 Conc: 34.91 ng/ml



#41 AR-1268-1

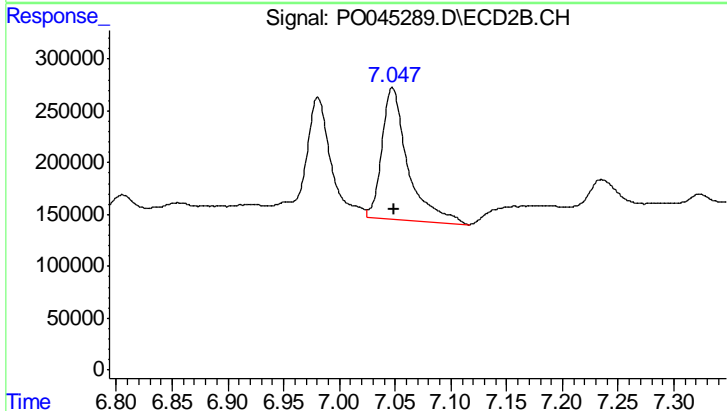
R.T.: 6.981 min
 Delta R.T.: -0.002 min
 Response: 1750248
 Conc: 31.72 ng/ml



#42 AR-1268-2

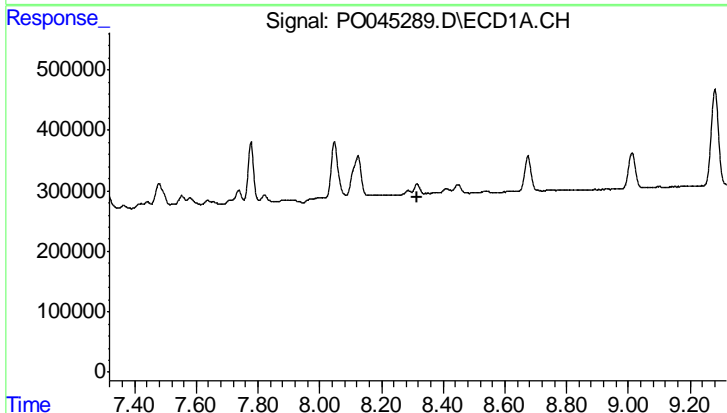
R.T.: 8.124 min
 Delta R.T.: -0.004 min
 Response: 1238598
 Conc: 36.35 ng/ml

Instrument :
 ECD_O
 ClientSampled :
 WC-9



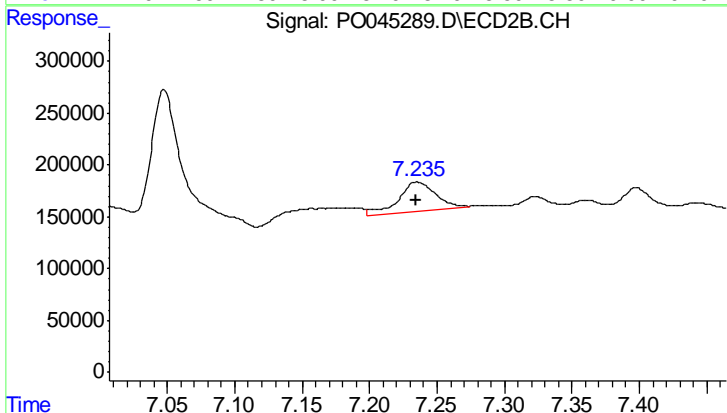
#42 AR-1268-2

R.T.: 7.047 min
 Delta R.T.: -0.002 min
 Response: 2057226
 Conc: 40.29 ng/ml



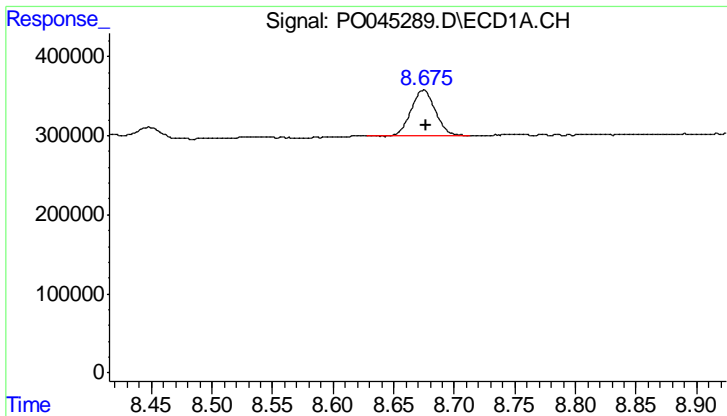
#43 AR-1268-3

R.T.: 0.000 min
 Exp R.T. : 8.318 min
 Response: 0
 Conc: N.D.



#43 AR-1268-3

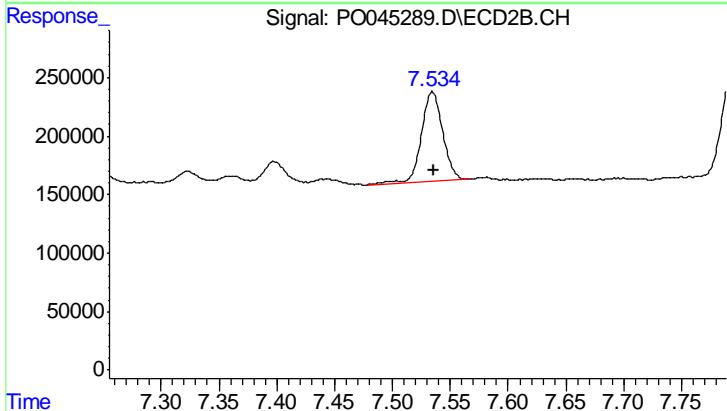
R.T.: 7.235 min
 Delta R.T.: 0.000 min
 Response: 556110
 Conc: 12.57 ng/ml



#44 AR-1268-4

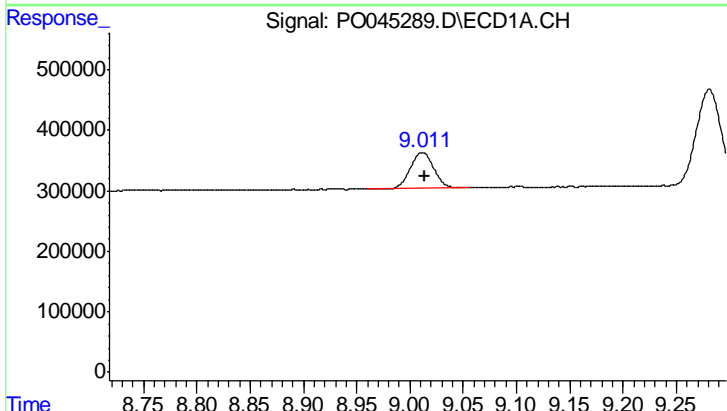
R.T.: 8.675 min
 Delta R.T.: -0.002 min
 Response: 811092
 Conc: 66.59 ng/ml

Instrument :
 ECD_O
 ClientSampleId :
 WC-9



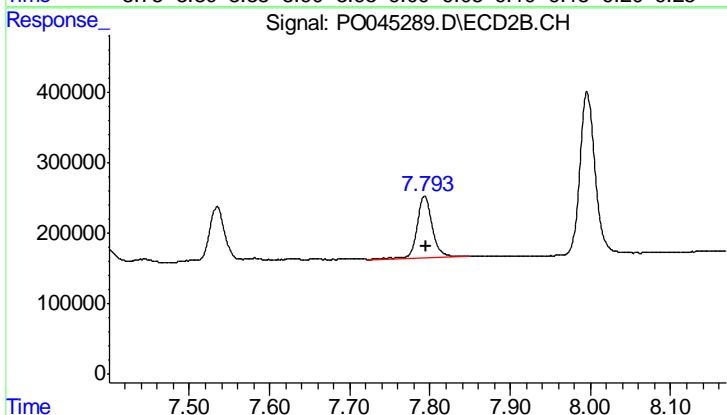
#44 AR-1268-4

R.T.: 7.535 min
 Delta R.T.: -0.002 min
 Response: 993686
 Conc: 57.09 ng/ml



#45 AR-1268-5

R.T.: 9.012 min
 Delta R.T.: -0.002 min
 Response: 920025
 Conc: 10.76 ng/ml



#45 AR-1268-5

R.T.: 7.793 min
 Delta R.T.: -0.002 min
 Response: 1153199
 Conc: 9.22 ng/ml