

Data Path : Z:\pestpcbsrv\HPCHEM1\ECD O\Data\PO060118\
 Data File : PO045307.D
 Signal(s) : Signal #1: ECD1A.CH Signal #2: ECD2B.CH
 Acq On : 31 May 2018 22:32
 Operator : SM/UA
 Sample : J3171-07
 Misc :
 ALS Vial : 24 Sample Multiplier: 1

Instrument :
 ECD_O
 ClientSampleId :
 052418-JETT-F-D-B

Integration File signal 1: autoint1.e
 Integration File signal 2: autoint2.e
 Quant Time: Jun 01 04:09:46 2018
 Quant Method : P:\HPCHEM1\ECD_O\methods\PO053018.M
 Quant Title : GC EXTRACTABLES
 QLast Update : Thu May 31 04:53:22 2018
 Response via : Initial Calibration
 Integrator: ChemStation 6890 Scale Mode: Small noise peaks clipped

Volume Inj. : 2 µl
 Signal #1 Phase : ZB-MR1 Signal #2 Phase: ZB-MR2
 Signal #1 Info : 30Mx0.32mmx 0.50µ Signal #2 Info : 30M x 0.32mm x 0.25µm

Compound	RT#1	RT#2	Resp#1	Resp#2	nq/ml	nq/ml

System Monitoring Compounds						
1) SA Tetrachlo...	3.998	3.274	4708821	5561719	22.544	20.057
2) SA Decachlor...	9.279	7.995	4540026	5699286	19.768	20.222

Target Compounds

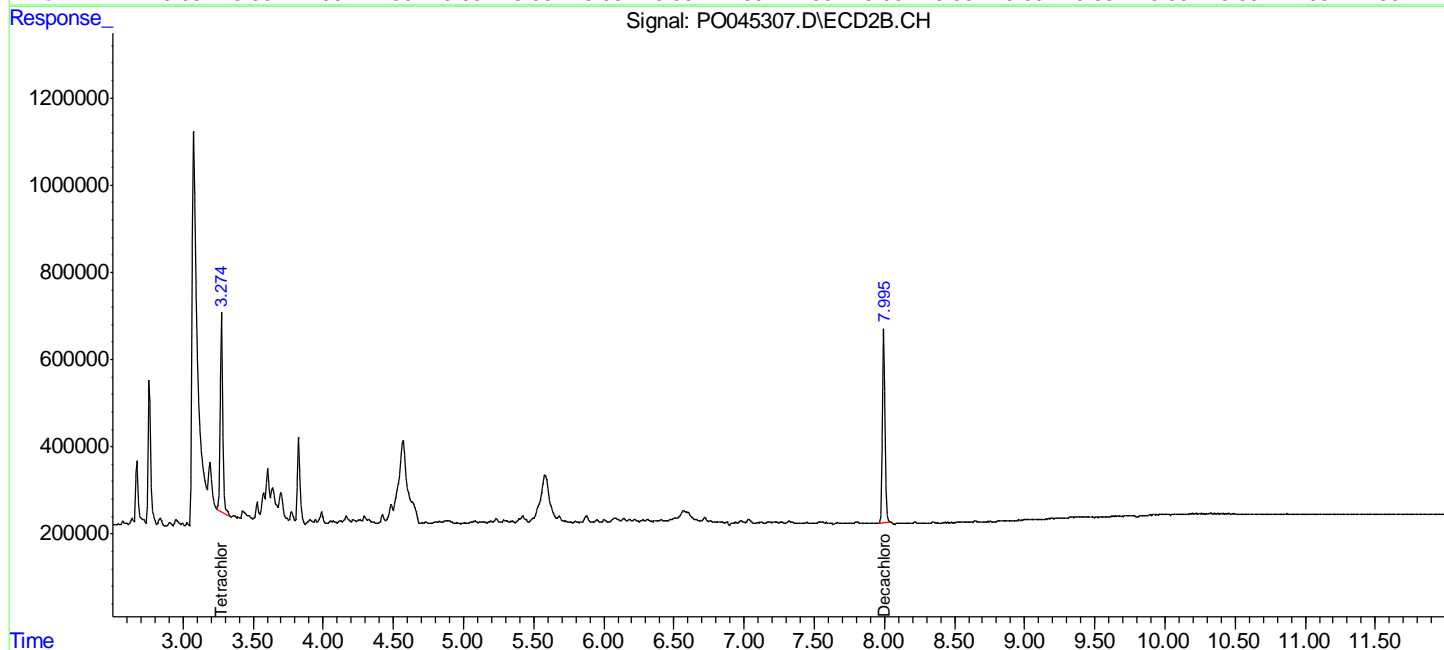
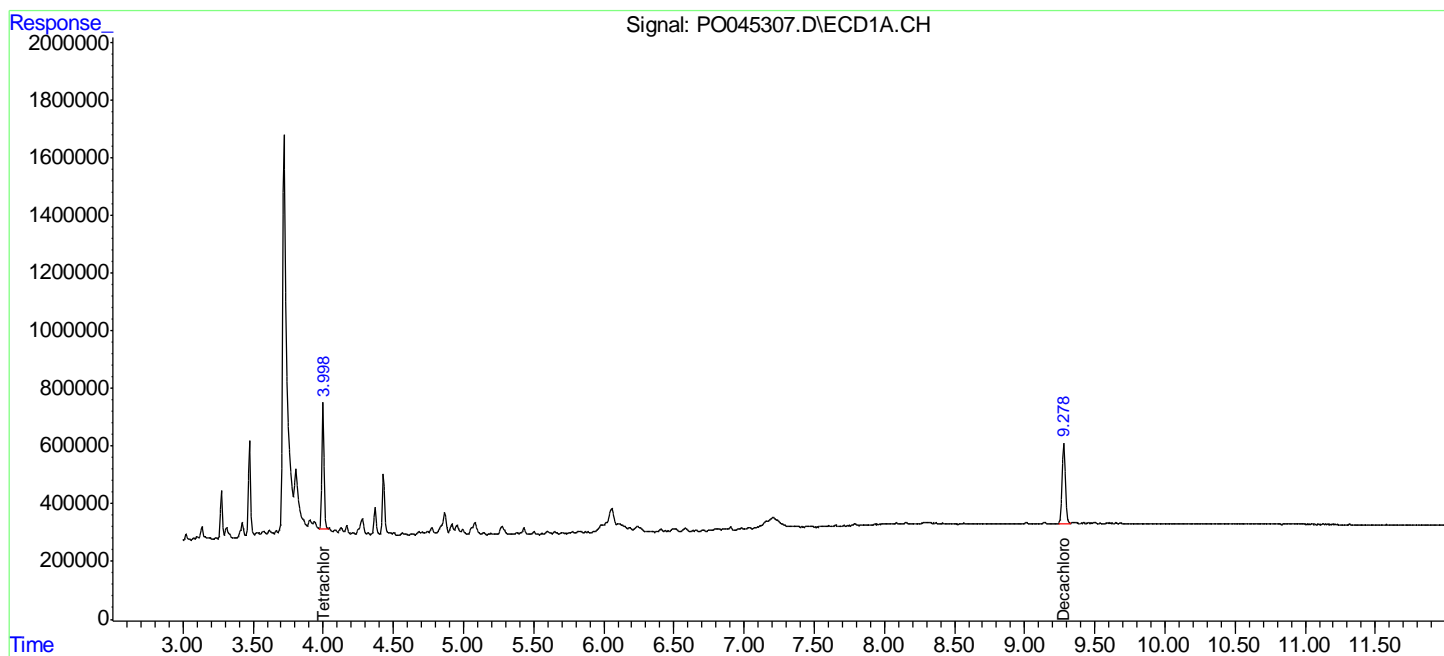
(f)=RT Delta > 1/2 Window (#)=Amounts differ by > 25% (m)=manual int.

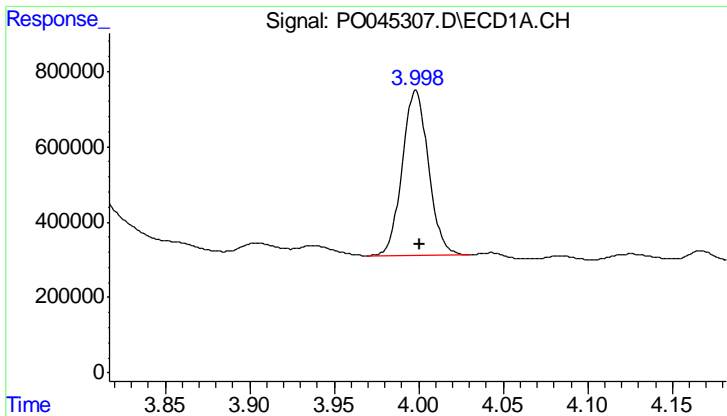
Data Path : Z:\pestpcbsrv\HPCHEM1\ECD O\Data\PO060118\
 Data File : PO045307.D
 Signal(s) : Signal #1: ECD1A.CH Signal #2: ECD2B.CH
 Acq On : 31 May 2018 22:32
 Operator : SM/UA
 Sample : J3171-07
 Misc :
 ALS Vial : 24 Sample Multiplier: 1

Instrument :
 ECD_O
 ClientSampleId :
 052418-JETT-F-D-B

Integration File signal 1: autoint1.e
 Integration File signal 2: autoint2.e
 Quant Time: Jun 01 04:09:46 2018
 Quant Method : P:\HPCHEM1\ECD_O\methods\PO053018.M
 Quant Title : GC EXTRACTABLES
 QLast Update : Thu May 31 04:53:22 2018
 Response via : Initial Calibration
 Integrator: ChemStation 6890 Scale Mode: Small noise peaks clipped

Volume Inj. : 2 µl
 Signal #1 Phase : ZB-MR1 Signal #2 Phase: ZB-MR2
 Signal #1 Info : 30Mx0.32mmx 0.50µ Signal #2 Info : 30M x 0.32mm x 0.25µm

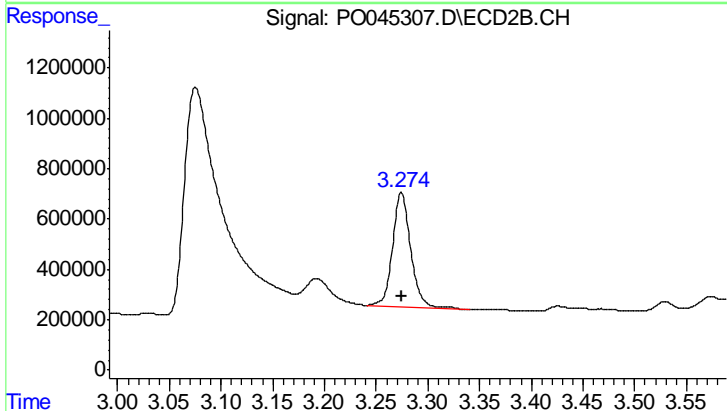




#1 Tetrachloro-m-xylene

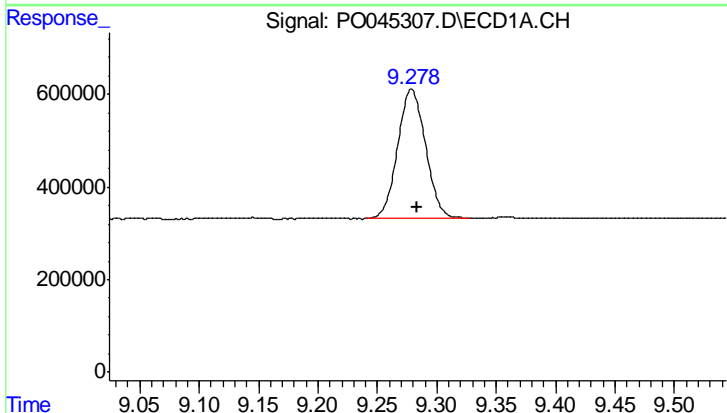
R.T.: 3.998 min
 Delta R.T.: -0.002 min
 Response: 4708821
 Conc: 22.54 ng/ml

Instrument :
 ECD_O
 ClientSampleId :
 052418-JETT-F-D-B



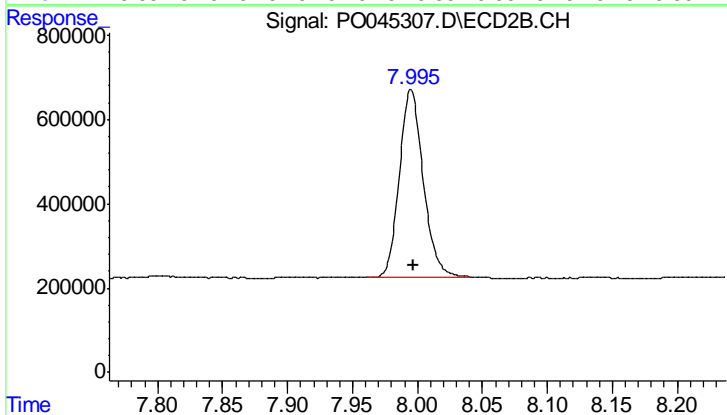
#1 Tetrachloro-m-xylene

R.T.: 3.274 min
 Delta R.T.: 0.000 min
 Response: 5561719
 Conc: 20.06 ng/ml



#2 Decachlorobiphenyl

R.T.: 9.279 min
 Delta R.T.: -0.005 min
 Response: 4540026
 Conc: 19.77 ng/ml



#2 Decachlorobiphenyl

R.T.: 7.995 min
 Delta R.T.: -0.002 min
 Response: 5699286
 Conc: 20.22 ng/ml