

Data Path : Z:\pestpcbsrv\HPCHEM1\ECD_0\Data\P0060120\
 Data File : P0068737.D
 Signal(s) : Signal #1: ECD1A.CH Signal #2: ECD2B.CH
 Acq On : 01 Jun 2020 18:25
 Operator : DD\AJ
 Sample : L2798-12
 Misc :
 ALS Vial : 24 Sample Multiplier: 1

Instrument :
 ECD_0
 ClientSampleId :
 NM-EB-8

Integration File signal 1: autoint1.e
 Integration File signal 2: autoint2.e
 Quant Time: Jun 02 03:58:05 2020
 Quant Method : Z:\pestpcbsrv\HPCHEM1\ECD_0\methods\P0052820.M
 Quant Title : GC EXTRACTABLES
 QLast Update : Fri May 29 02:25:52 2020
 Response via : Initial Calibration
 Integrator: ChemStation 6890 Scale Mode: Small noise peaks clipped

Volume Inj. : 2 µl
 Signal #1 Phase : ZB-MR1 Signal #2 Phase: ZB-MR2
 Signal #1 Info : 30Mx0.32mmx 0.50µ Signal #2 Info : 30M x 0.32mm x 0.25µm

Compound	RT#1	RT#2	Resp#1	Resp#2	ng/ml	ng/ml

System Monitoring Compounds						
1) SA Tetrachlo...	4.890	3.928	585104	708230	18.875	19.171
2) SA Decachlor...	10.833	9.198	614579	633566	14.252	14.921

Target Compounds

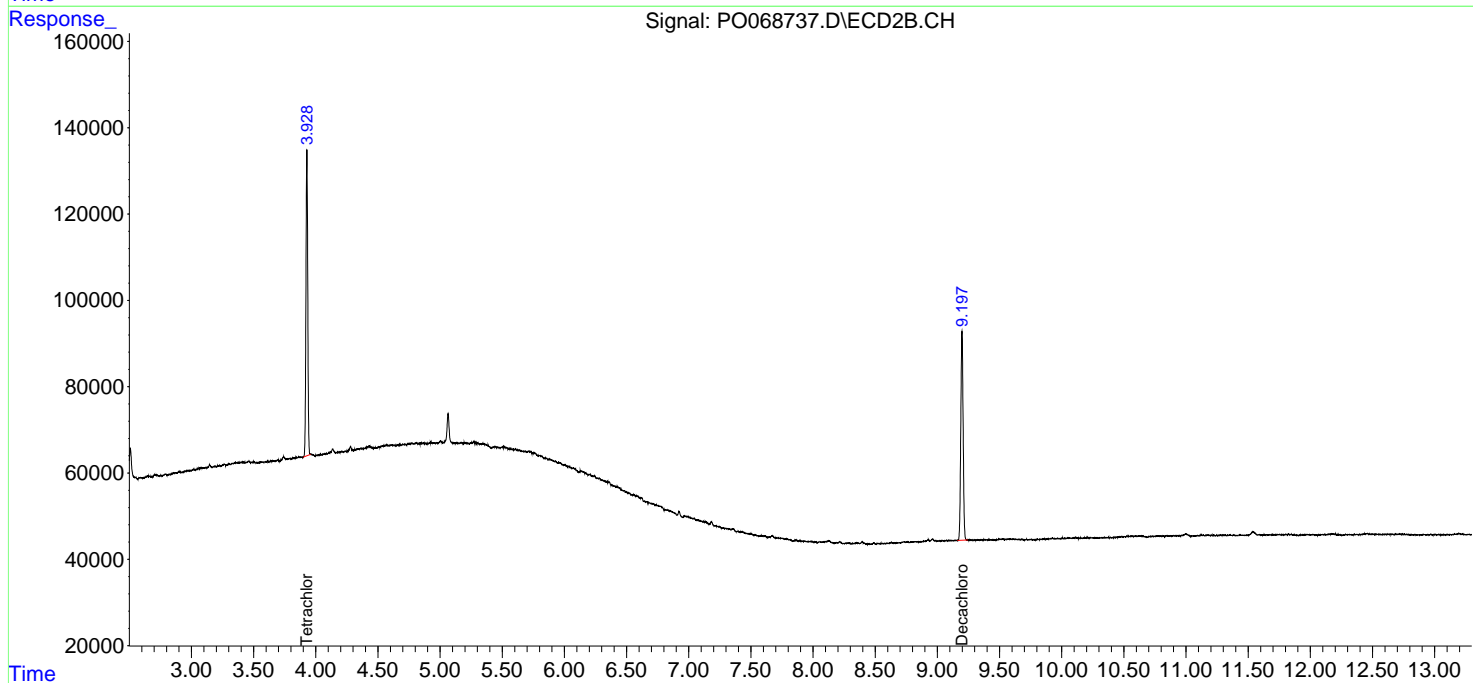
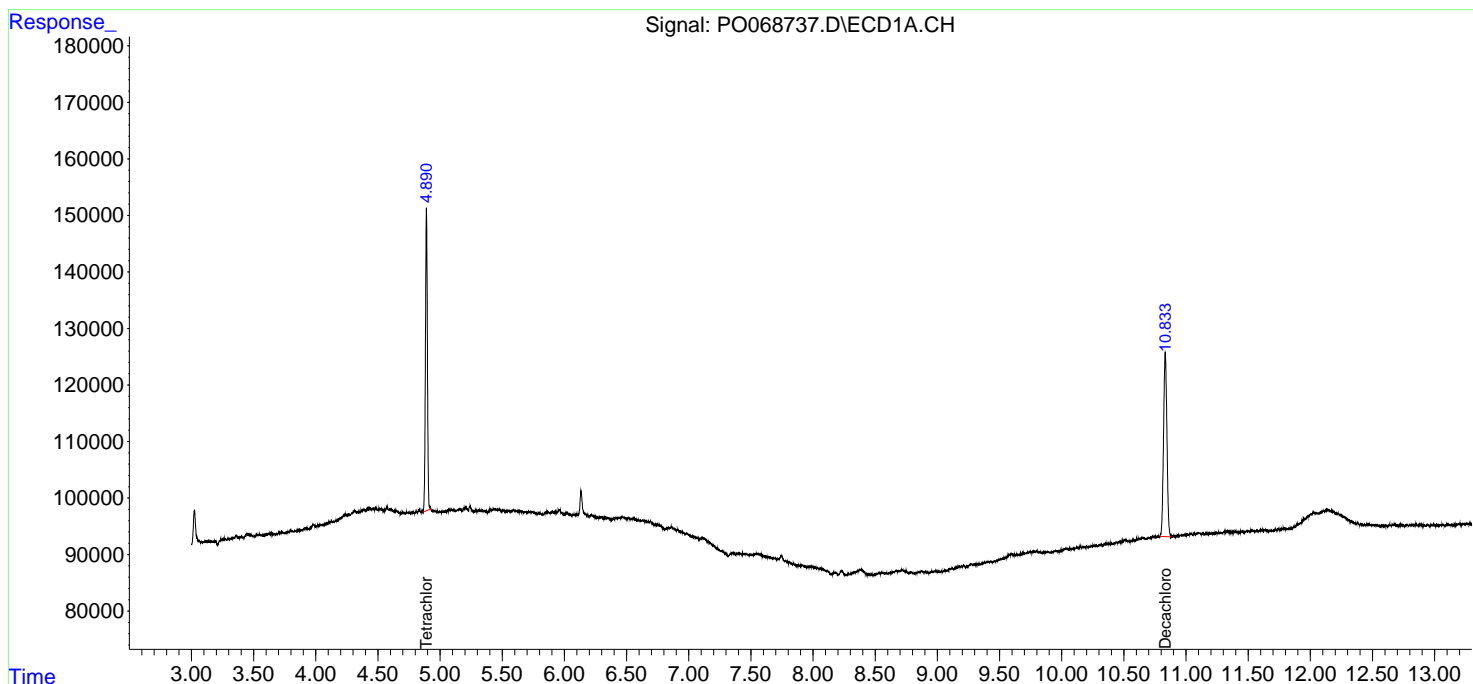
(f)=RT Delta > 1/2 Window (#)=Amounts differ by > 25% (m)=manual int.

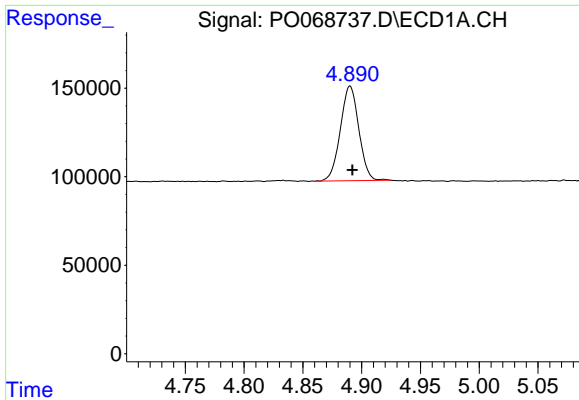
Data Path : Z:\pestpcbsrv\HPCHEM1\ECD_0\Data\P0060120\
 Data File : P0068737.D
 Signal(s) : Signal #1: ECD1A.CH Signal #2: ECD2B.CH
 Acq On : 01 Jun 2020 18:25
 Operator : DD\AJ
 Sample : L2798-12
 Misc :
 ALS Vial : 24 Sample Multiplier: 1

Instrument :
 ECD_O
 ClientSampleId :
 NM-EB-8

Integration File signal 1: autoint1.e
 Integration File signal 2: autoint2.e
 Quant Time: Jun 02 03:58:05 2020
 Quant Method : Z:\pestpcbsrv\HPCHEM1\ECD_0\methods\P0052820.M
 Quant Title : GC EXTRACTABLES
 QLast Update : Fri May 29 02:25:52 2020
 Response via : Initial Calibration
 Integrator: ChemStation 6890 Scale Mode: Small noise peaks clipped

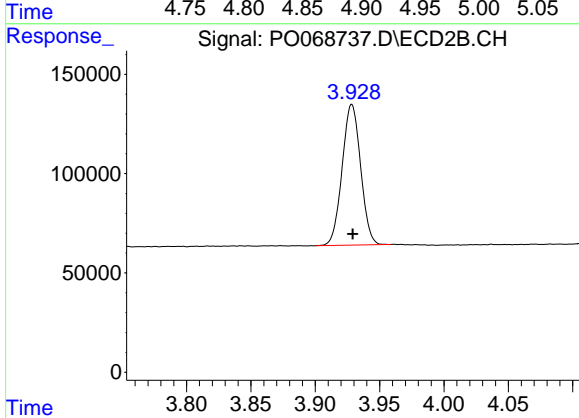
Volume Inj. : 2 µl
 Signal #1 Phase : ZB-MR1 Signal #2 Phase: ZB-MR2
 Signal #1 Info : 30Mx0.32mmx 0.50µ Signal #2 Info : 30M x 0.32mm x 0.25µm



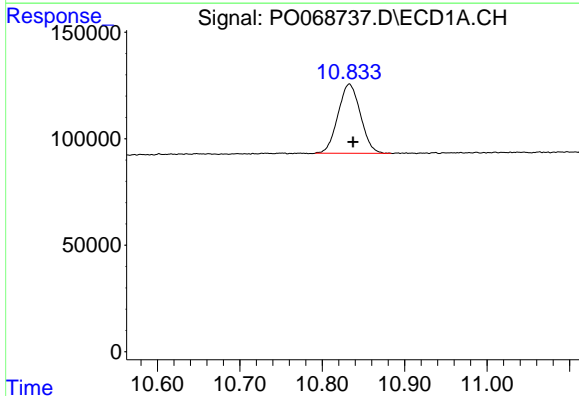


#1 Tetrachloro-m-xylene
 R.T.: 4.890 min
 Delta R.T.: -0.002 min
 Response: 585104
 Conc: 18.87 ng/ml

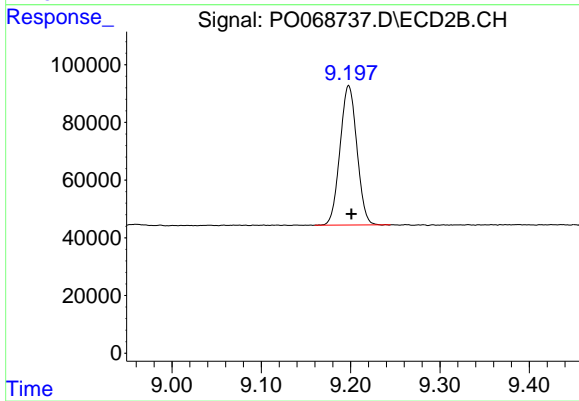
Instrument :
 ECD_O
 ClientSampleId :
 NM-EB-8



#1 Tetrachloro-m-xylene
 R.T.: 3.928 min
 Delta R.T.: 0.000 min
 Response: 708230
 Conc: 19.17 ng/ml



#2 Decachlorobiphenyl
 R.T.: 10.833 min
 Delta R.T.: -0.005 min
 Response: 614579
 Conc: 14.25 ng/ml



#2 Decachlorobiphenyl
 R.T.: 9.198 min
 Delta R.T.: -0.003 min
 Response: 633566
 Conc: 14.92 ng/ml